

# CERTIFICATE OF LOCATION OF GOVERNMENT CORNER

NE 1/16 Corner of Section 1, Township 141, Range 30, 5 P.M.

STATE OF MINNESOTA, County of CASS

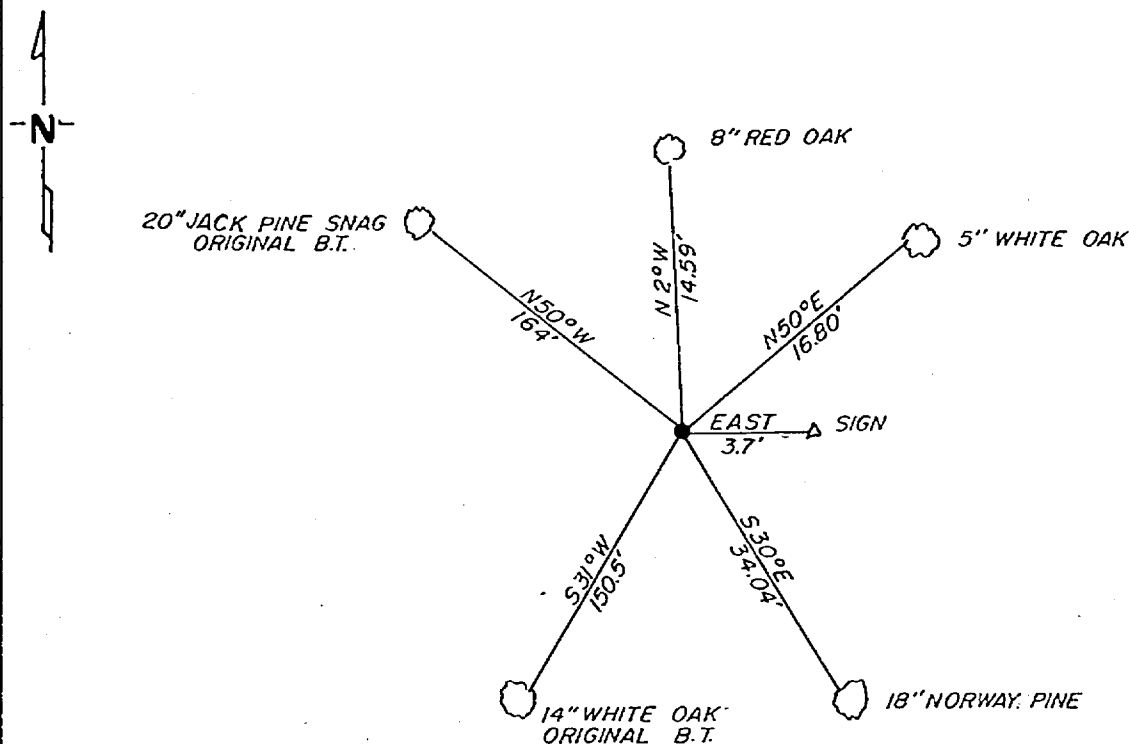
At the corner location shown on the sketch:

On 10-8-81 found a 1"x36" iron pipe with brass cap standing in good condition

left monument as found,  lowered monument,  removed monument (explain)

On \_\_\_\_\_ placed a \_\_\_\_\_

### SKETCH OF REFERENCE TIES



not to scale

Statement of evidence relative to this corner location is on back of page.

I hereby certify that this document and the data contained herein was prepared by me or under my direct supervision.

Walter E. Lewis 12-8-81  
SIGNATURE DATE

Registration No. 11395

Land Surveyor,  Professional Engineer

County Surveyor,  County Engineer

26 26 26  
OFFICE OF THE REGISTER OF DEEDS  
County of Cass

I hereby certify that this document was filed in the Reg. of Deeds office at 11:50 A.M. on the 7 day of May A.D., 1982

Register of Deeds Benlob Hendrichs  
By M S, Deputy

DOCUMENT NO. 26 26 20

In 1917, Earl G. Harrington, a US surveyor set a 1"x36" iron pipe with brass cap for the NE 1/16 corner from which he made the following BT's. A 8" jackpine N 50 $\frac{1}{4}$  W 249 LKS and a 6" white oak S 31 W 228 LKS.

On October 8, 1981, Walter Curo and Paul Johnson find the brass cap monument standing in good condition. The 6" white oak BT is now a 14" tree hollow, but still living. The 8" jackpine is now a 20" snag. Both check good for bearing and distance. We make new BT's as shown on front.