

CERTIFICATE OF LOCATION OF GOVERNMENT CORNER

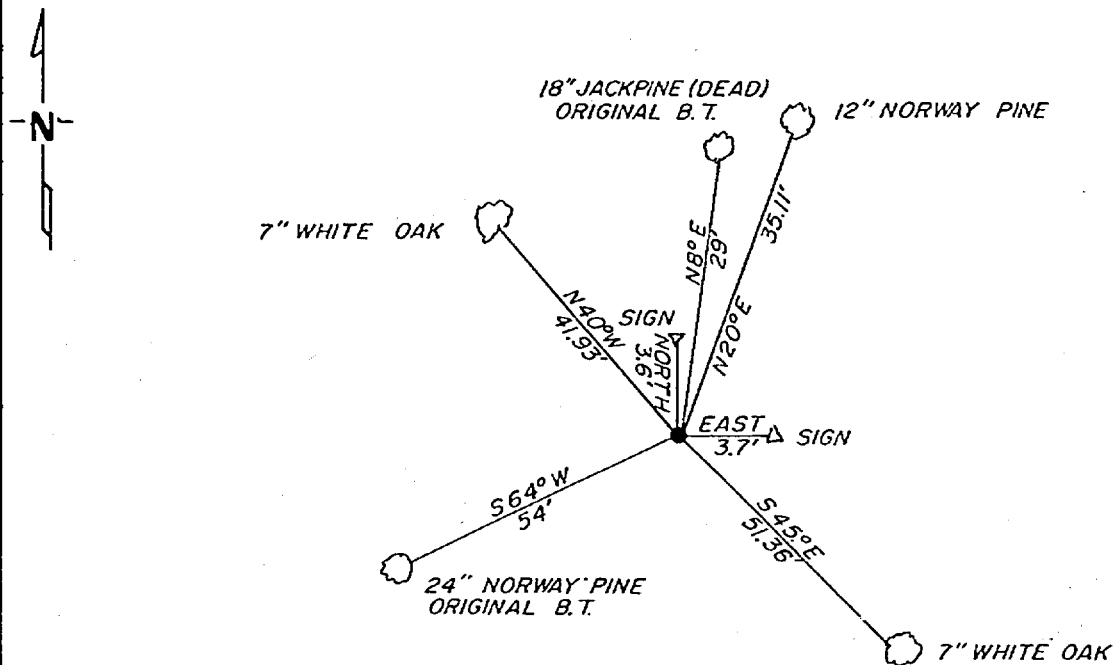
SW 1/16 Corner of Section 1, Township 141, Range 30, 5 P.M.

STATE OF MINNESOTA, County of CASS

At the corner location shown on the sketch:

- On 10-7-81 found a 1"x36" iron pipe with brass cap standing in good condition
DATE
- left monument as found, lowered monument, removed monument (explain)
- On _____ placed a _____
DATE

SKETCH OF REFERENCE TIES



not to scale

Statement of evidence relative to this corner location is on back of page.

I hereby certify that this document and the data contained herein was prepared by me or under my direct supervision.

Walter E. Cass 12-8-81
SIGNATURE DATE

Registration No. 11395

- Land Surveyor, Professional Engineer
- County Surveyor, County Engineer

262617
 OFFICE OF THE REGISTER OF DEEDS
 County of Cass

I hereby certify that this document was filed in the Reg. of Deeds office at 11:35 A.M. on the 7 day of May A.D., 1982

Register of Deeds Bunlah Kerdichan

By MS, Deputy

DOCUMENT NO. 262617

In 1917, Earl G. Harrington, a US surveyor set a 1"x36" iron pipe with brass cap for SW 1/16 corner from which he made the following BT's. A 8" jackpine N 8 E 44 LKS and a 10" white pine south 64½ W 82 LKS.

On October 7, 1981, Walter E. Curo and Paul Johnson find the brass cap monument standing in good condition. The 8" jackpine is now 18" and dead. The 10" white pine is now a 24" norway pine. Both BT's check good for bearing and distance. We make new BT's as shown on front.