

CERTIFICATE OF LOCATION OF GOVERNMENT CORNER

W.C. AP 1 TR 1223 Corner of Section 11, Township 141, Range 30, 5 P.M.

STATE OF MINNESOTA, County of CASS

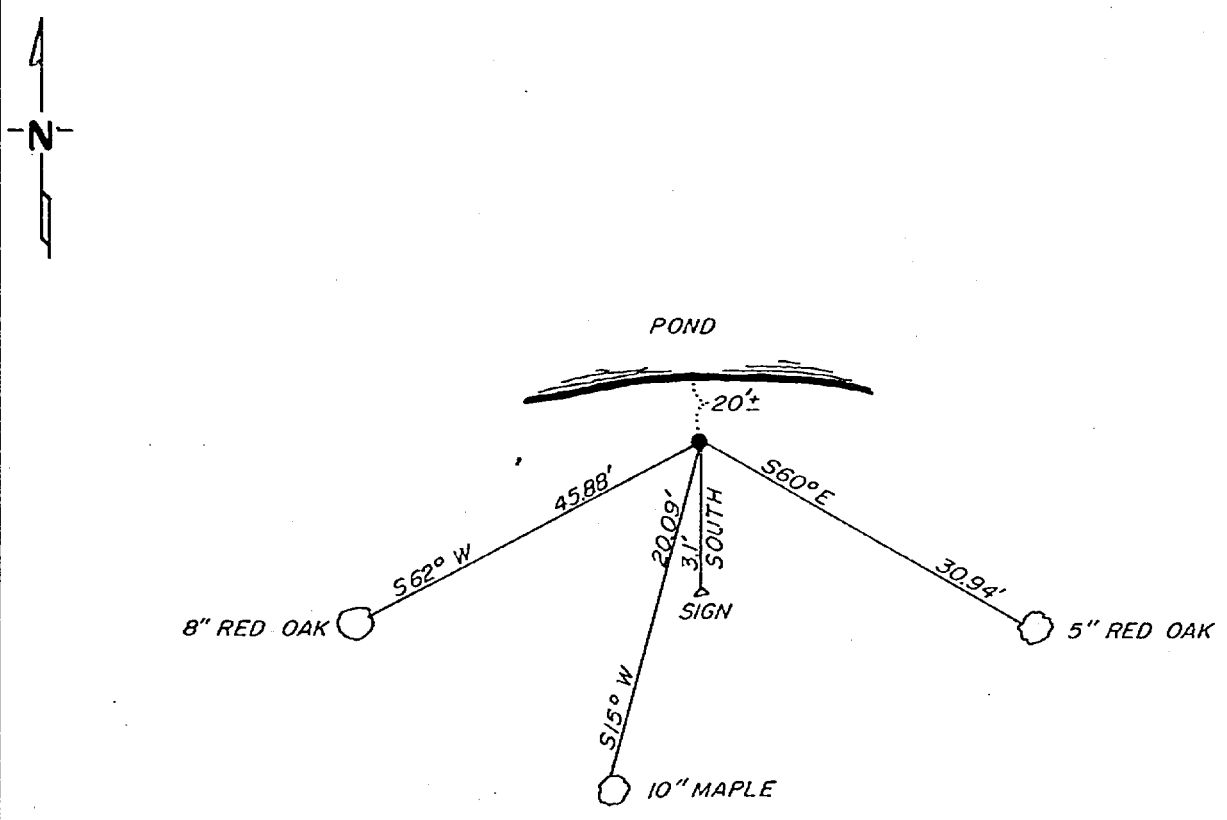
At the corner location shown on the sketch:

On 10-28-81 found a 1"x36" brass cap monument on south shore of pond standing in good condition

left monument as found, lowered monument, removed monument (explain)

On _____ placed a _____

SKETCH OF REFERENCE TIES



not to scale

Statement of evidence relative to this corner location is on back of page.

I hereby certify that this document and the data contained herein was prepared by me or under my direct supervision.

Walt E. Cass 12-8-81
SIGNATURE DATE

Registration No. 11395

- Land Surveyor, Professional Engineer
- County Surveyor, County Engineer

262616
OFFICE OF THE REGISTER OF DEEDS
County of Cass

I hereby certify that this document was filed in the Reg. of Deeds office at 11:30 A.M. on the 7 day of May A.D., 1982

Register of Deeds Daniel H. Fisher

By MS, Deputy

DOCUMENT NO. 262616

In 1917, Earl G. Harrington, a US surveyor set a 1"x36" iron pipe with brass cap for W.C. T AP 1 TR 1223 and AP 3 TR 1669 and AP 4 TR 1226. No BT's were made.

On October 28, 1981, Walter Curo and Paul Johnson find the brass cap monument standing in good condition on the south side of a small pond 20 feet south of waters edge. We make BT's as shown on front.