

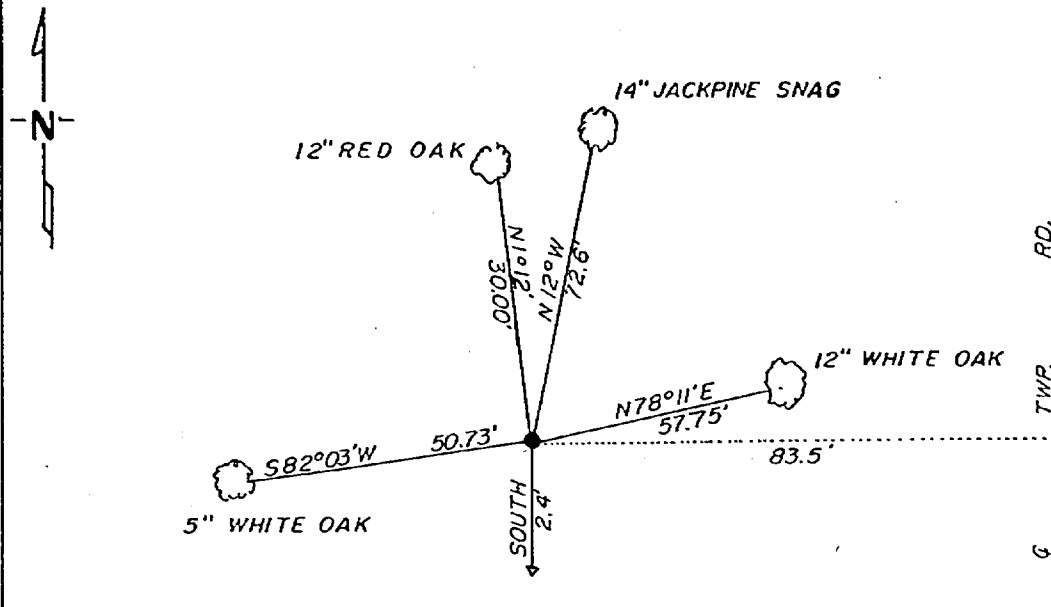
CERTIFICATE OF LOCATION OF GOVERNMENT CORNER

E 1/4 Corner of Section 1, Township 141, Range 30, 5 P.M.
 STATE OF MINNESOTA, County of CASS

At the corner location shown on the sketch:

- On 9-11-81 found a found a 1'x36' pipe with brass cap stamped
DATE E 1/4 S 1 - S 6
- left monument as found, lowered monument, removed monument (explain)
- On _____ placed a _____
DATE

SKETCH OF REFERENCE TIES



not to scale

Statement of evidence relative to this corner location is on back of page.

I hereby certify that this document and the data contained herein was prepared by me or under my direct supervision.

Walter E. Reem 12-8-81
SIGNATURE DATE

Registration No. 11395
 Land Surveyor, Professional Engineer
 County Surveyor, County Engineer

262611
 OFFICE OF THE REGISTER OF DEEDS
 County of Cass
 I hereby certify that this document was filed in the Reg. of Deeds office at 11:05 A.M. on the 7 day of May A.D., 1982
 Register of Deeds Benedict Handricher
 By M.S., Deputy
 DOCUMENT NO. 262611

In 1917, Earl G. Harrington, US Surveyor set a 1"x36" iron pipe with a brass cap for the E $\frac{1}{4}$, Sec.1 from which he marked the following bearing trees. A 12" pine N 11 $\frac{1}{4}$ E 72.6' and a 6" oak S 60 $\frac{1}{2}$ W 44.22 feet.

On September 11, 1981, Walter E. Curo found the 1"x36" iron pipe with brass cap stamped E $\frac{1}{4}$, S1-S6 from which we find a 14" pine snag with an old rusty tag nailed on it which stands N 12 - 20 E 72.6 feet. We check S 60 $\frac{1}{2}$ W 44.2 feet, but all we find is a hole from a rotted out tree. We make new bearing trees as shown on the front of this card.