

CERTIFICATE OF LOCATION OF GOVERNMENT CORNER

CE 1/16 Corner of Section 1, Township 141, Range 30, 5 P.M.

STATE OF MINNESOTA, County of CASS

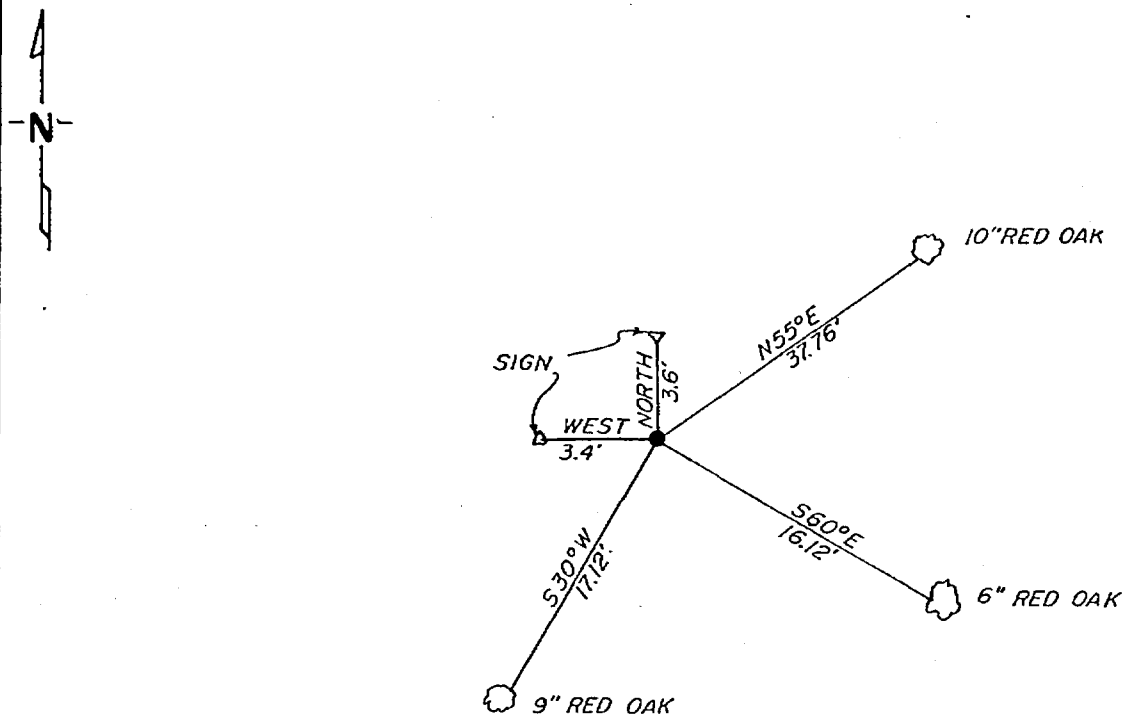
At the corner location shown on the sketch:

On 10-8-81 found a 1" x 36" iron pipe with brass cap standing
DATE in good condition

left monument as found, lowered monument, removed monument (explain)

On _____ placed a _____
DATE

SKETCH OF REFERENCE TIES



not to scale

Statement of evidence relative to this corner location is on back of page.

I hereby certify that this document and the data contained herein was prepared by me or under my direct supervision.

Walter E. Olson 12-8-81
SIGNATURE DATE

Registration No. 11395

Land Surveyor, Professional Engineer

County Surveyor, County Engineer

262608
 OFFICE OF THE REGISTER OF DEEDS
 County of Cass

I hereby certify that this document was filed in the Reg. of Deeds office at 10:50 A.M. on the 7 day of May A.D., 1982

Register of Deeds Benedict H. Smith
 By MS, Deputy

DOCUMENT NO. 262608

In 1917, Earl G. Harrington a US surveyor set a 1"x36" iron pipe with brass cap for CE 1/16 from which he made the following BT's. A 5" white oak S49½ E 184 LKS and a 8" jackpine S44¼ W 133 LKS.

On October 8, 1981, Walter Curo and Paul Johnson find the brass cap monument standing in good condition. We search for the original Bt's, but find no trace of either one. We make new BT's as shown on front.