

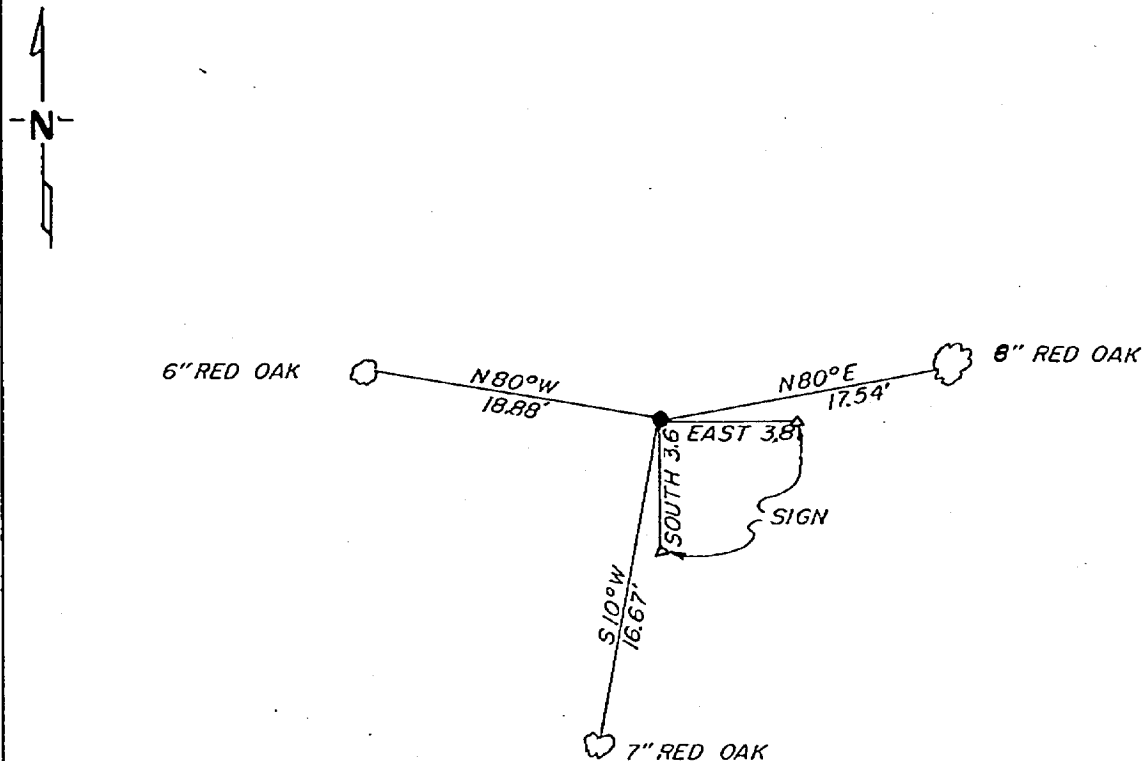
CERTIFICATE OF LOCATION OF GOVERNMENT CORNER

CW 1/16 Corner of Section 1, Township 141, Range 30, 5 P.M.
STATE OF MINNESOTA, County of CASS

At the corner location shown on the sketch:

- On 10-7-81 found a 1"x36" iron pipe with brass cap standing
DATE in good condition.
- left monument as found, lowered monument, removed monument (explain)
- On _____ placed a _____
DATE

SKETCH OF REFERENCE TIES



not to scale

Statement of evidence relative to this corner location is on back of page.

I hereby certify that this document and the data contained herein was prepared by me or under my direct supervision.

Walter E. Lewis 12-8-81
SIGNATURE DATE

Registration No. 11395

- Land Surveyor, Professional Engineer
 County Surveyor, County Engineer

262607
 OFFICE OF THE REGISTER OF DEEDS
 County of Cass

I hereby certify that this document was filed in the Reg. of Deeds office at 10:45 A. .M. on the 7 day of May A.D., 1982

Register of Deeds Beverly Hedrick
 By MS, Deputy

DOCUMENT NO. 262607

In 1917, Earl G. Harrington, a US surveyor set a 1"x36" iron pipe with brass cap for CW 1/16 corner from which he made the following BT's. A norway pine N 87½ E 490 LKS and a 6" white oak S 35½ W 41 LKS.

On October 7, 1981, Walter Curo and Paul Johnson find the brass cap monument standing in good condition. Find rotted remains of the 6" white oak bears S 35 W 27 '. Make new BT's as shown on front.