

CERTIFICATE OF LOCATION OF GOVERNMENT CORNER

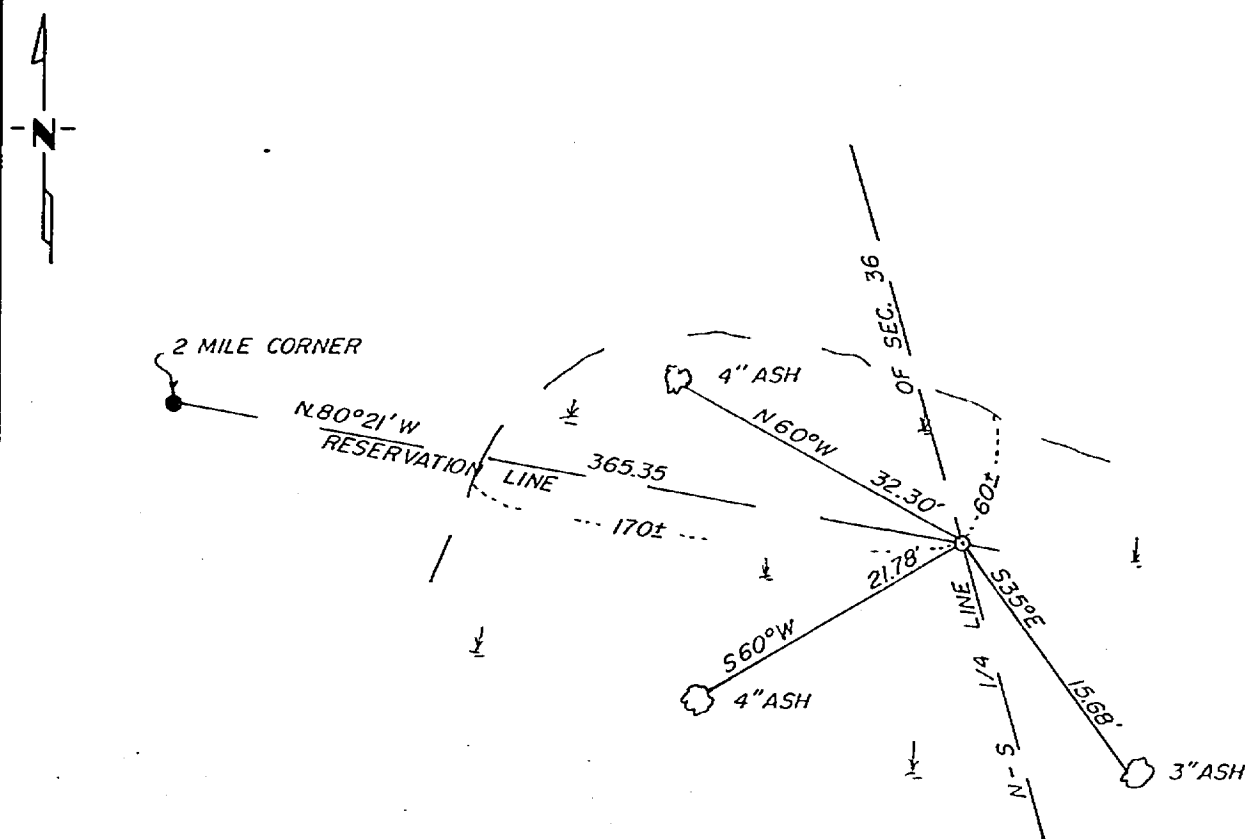
N-S 1/4 LINE AND
RESERVATION LINE Corner of Section 36, Township 141, Range 28, 5th P.M.

STATE OF MINNESOTA, County of CASS

At the corner location shown on the sketch:

- On _____ found a _____
DATE
- left monument as found, lowered monument, removed monument (explain)
- On 4-23-82 placed a 2½x60" iron pipe monument with brass cap at
DATE
the intersection of the reservation line with the N-S 1/4 line

SKETCH OF REFERENCE TIES



Statement of evidence relative to this corner location is on back of page.

I hereby certify that this document and the data contained herein was prepared by me or under my direct supervision.

Walter E. Cunn 4-23-82
SIGNATURE DATE

Registration No. 11395

Land Surveyor, Professional Engineer

County Surveyor, County Engineer

262508
OFFICE OF THE REGISTER OF DEEDS

County of Cass

I hereby certify that this document was filed in the Reg. of Deeds office at 4:00 P.M. on the 30 day of April A.D., 1982

Register of Deeds Buelah Herdink

By MS, Deputy

DOCUMENT NO. 262508