

CERTIFICATE OF LOCATION OF GOVERNMENT CORNER

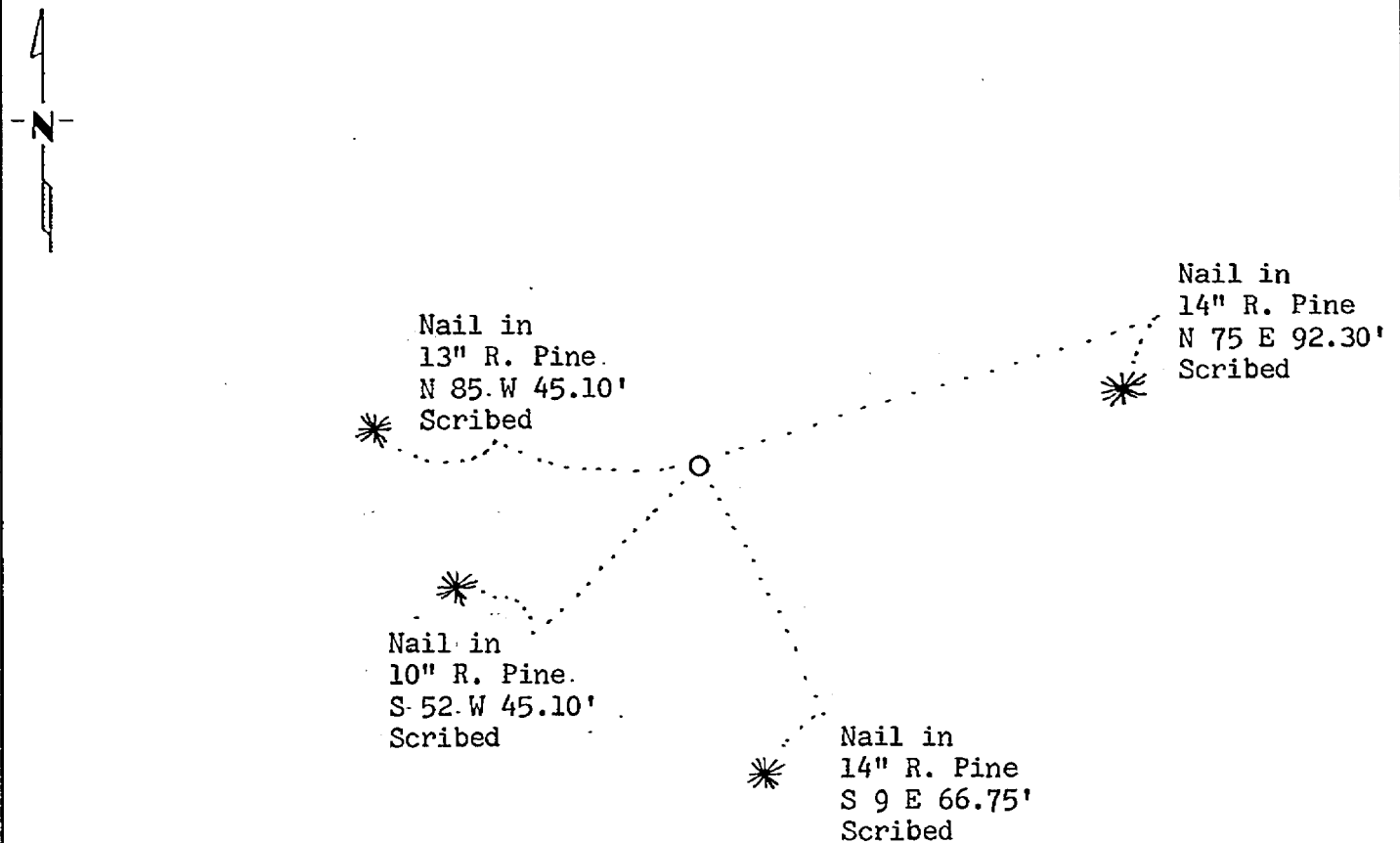
NORTHEAST Corner of Section 11, Township 142, Range 31, 5th P.M.

STATE OF MINNESOTA, County of Cass

At the corner location shown on the sketch:

- On 12/11/79 found a marked brass cap monument as set by the GLO in 1917.
DATE
- left monument as found, lowered monument, removed monument (explain)
- On _____ placed a _____
DATE

SKETCH OF REFERENCE TIES



BEARINGS ARE APPROXIMATE

Statement of evidence relative to this corner location is on back of page.
261362

I hereby certify that this document and the data contained herein was prepared by me or under my direct supervision.

Sam H. Stevenson 2-1-82
SIGNATURE DATE

Registration No. 12684

- Land Surveyor, Professional Engineer
 County Surveyor, County Engineer

OFFICE OF THE COUNTY RECORDER

County of Cass

I hereby certify that this document was filed in the Co. Recorders office at 9:55 A.M. on the 2 day of Feb. A.D., 1982

County Recorder Benedict Hardin

By MS, Deputy

DOCUMENT NO. 261362

Statement of Evidence:

- 1874 U.S. General Land Office survey set wood post for this corner and marked the following bearing trees: 30" W. Pine N 72 E 194 links, 30" Y. Pine N 22½ W 342 links, and 30" Y. Pine S 66½ E 70 links.
- 1917 U.S. General Land Office dependent resurvey found the corner marked by a local corner recognized as the true position for the section corner in absence of any evidence of the original corner. An iron pipe with a marked brass cap was set to mark the corner. The following bearing trees were marked: 6" R. Oak N 21 E 33 links, 6" R. Oak S 72 E 36 links, 6" R. Oak S 62½ W 44 links, and 6" R. Oak N 5½ W 26 links.
- 1935 Carl Steadland working under the CCC program shows 2" iron pipe with brass cap found in good condition up 6". He placed a metal location poster on a 7" R. Oak S 60¼ W 43 links.
1965. USFS technician W. Illi found the marked brass cap in good condition.
- 1979 USFS technician M. Hayes again found the marked brass cap in good condition. He found stump depressions that fit the 1917 calls for bearing trees to the NE, SE and SW and remains of an oak stump at the NW call. Four new bearing trees were marked and are shown on this certificate. Steel sign posts were set 4.5' south and 4.7' east of the corner.
- 1981 County Surveyor's Records in the Recorder's Office were checked and no resurvey information was found on this corner.
- 1982 On Jan. 29, corner was visited and items found as per 1979 USFS survey report. Accepted monument found as being in same position as set in 1917.