

CERTIFICATE OF LOCATION OF GOVERNMENT CORNER

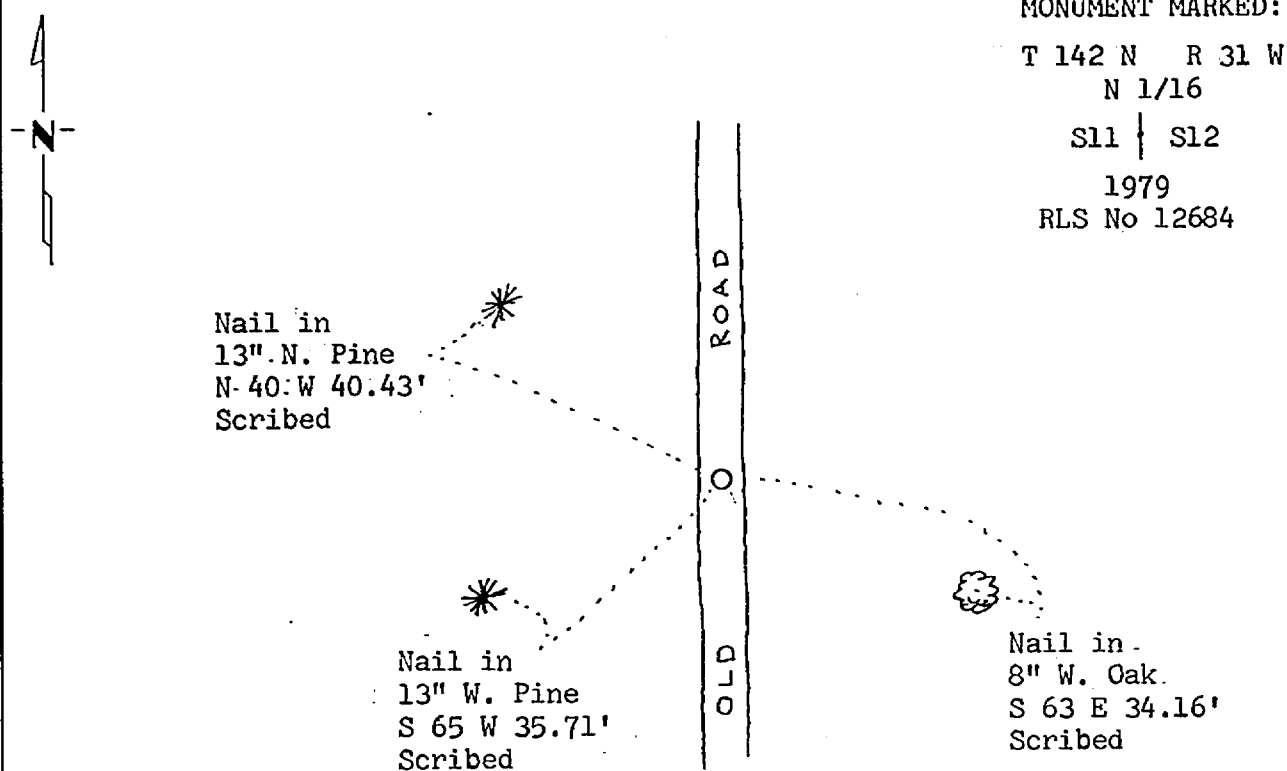
NORTH SIXTEENTH Corner of Section 11 & 12, Township 142, Range 31, 5th P.M.

STATE OF MINNESOTA, County of CASS

At the corner location shown on the sketch:

- On 12/11/79 found a bent iron pipe as set by the GLO in 1917 with brass cap missing.
DATE
- left monument as found, lowered monument, removed monument (explain)
- On 12/11/79 placed a 2" x 24" concrete filled galvanized iron pipe with marked brass cap down 6".
DATE

SKETCH OF REFERENCE TIES



BEARINGS ARE APPROXIMATE

Statement of evidence relative to this corner location is on back of page 261361

I hereby certify that this document and the data contained herein was prepared by me or under my direct supervision.

Mary H. Stevenson
SIGNATURE

2-1-82
DATE

Registration No. 12684

Land Surveyor, Professional Engineer

County Surveyor, County Engineer

OFFICE OF THE COUNTY RECORDER

County of Cass

I hereby certify that this document was filed in the Co. Recorders office at 9:50 A.M. on the 2 day of Feb. A.D., 1982

County Recorder Beverly Hendricks

By MS, Deputy

DOCUMENT NO. 261361

Statement of Evidence:

- 1917 U.S. General Land Office dependent resurvey established this corner and an iron pipe with a marked brass cap was set to mark the corner. The following bearing trees were marked: 5" R. Oak N 70 E 18 links and 5" R. Oak S 70 W 35 links.
- 1935 Carl Steadland working under the CCC program found the GLO iron with brass cap in good condition. No bearing trees found. He placed a Forest Service Location Poster, on a 5" Red Oak from which the corner bears N 24° E 19 links (12.54').
- 1967 USFS technician Leo Witthoef found the iron post bent level with the ground with the brass cap broken off and lying on the ground. Also found the FSLP placed in 1935 from which the corner bears N 24° E 19 links (12.54').
- 1978 USFS technician Randy Silbaugh found the same evidence as Witthoef.
- 1979 USFS technician C. Krause, Gary Brama and Michael Hayes found the GLO iron post beat flush with the ground. No brass cap found. Dug to base of monument and determined flanges were in place. From point of flanges found: Organic depression N 70° E 11.88' and R. Oak stump S 70° W 23.10' (had been cut flush with ground). The GLO iron was replaced with a 2" x 24" galvanized concrete filled iron pipe with a 3" brass tablet marked. Placed 6" below surface. Replaced beat GLO iron along side new monument. Three new bearing trees were marked and are shown on this certificate. A steel sign post was set 8.2' east of the corner.