

CERTIFICATE OF LOCATION OF GOVERNMENT CORNER

NORTH QUARTER Corner of Section 16, Township 141, Range 29, 5th P.M.

STATE OF MINNESOTA, County of CASS

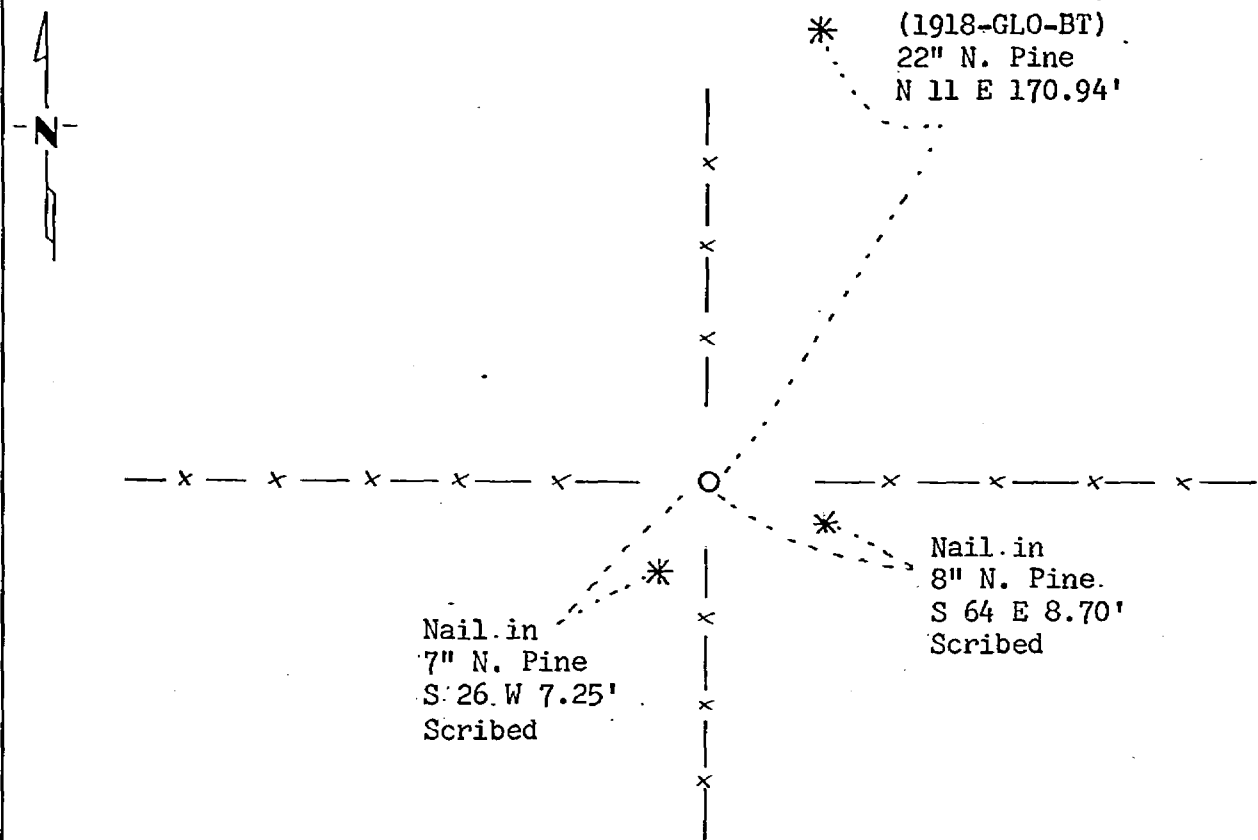
At the corner location shown on the sketch:

On 7/8/80 found a GLO brass cap monument in place as set in 1918.
DATE

left monument as found, lowered monument, removed monument (explain)

On _____ placed a _____
DATE

SKETCH OF REFERENCE TIES



BEARINGS ARE APPROXIMATE

Statement of evidence relative to this corner location is on back of page 260990

I hereby certify that this document and the data contained herein was prepared by me or under my direct supervision.

Sam A. Stevenson 12-15-81
SIGNATURE DATE

Registration No. 12684

Land Surveyor, Professional Engineer

County Surveyor, County Engineer

OFFICE OF THE COUNTY RECORDER

County of Cass

I hereby certify that this document was filed in the Co. Recorders office at 9:24 A.M. on the 31 day of Dec. A.D., 19 81

County Recorder Beulah Hardin

By MS, Deputy

DOCUMENT NO. 260990

Statement of Evidence:

- 1873 U.S. General Land Office survey set wood post for this corner and marked the following bearing trees: 6" Poplar N 19 E 32 links and 4" Poplar S 40 W 19 links.
- 1918 U.S. General Land Office dependent resurvey found the corner marked by an oak stake 3" x 3" x 24", marked "1-S" on the north face. No evidence was found of the original bearing trees. An iron pipe with a marked brass cap was set to mark the corner. The following bearing trees were marked: 18" Pine N 10-45 E 259 links and 5" Poplar S 28 W 44 links. Corner is at the corner of old fences running north-south and east-west.
- 1980 USFS technician Jim Schoonover found the GLO grass cap monument in good condition. A 22" N. Pine was found as listed in the 1918 resurvey. No evidence of the Poplar was found. Two new bearing trees were marked and are shown on this certificate.
1981. On Dec. 8, I visited the corner and found items as per 1980 USFS report. the 22" N. Pine had visible scribing in old scar.
- 1981 County Surveyor's Records in the Recorder's Office were checked and no resurvey information was found on this corner.