

CERTIFICATE OF LOCATION OF GOVERNMENT CORNER

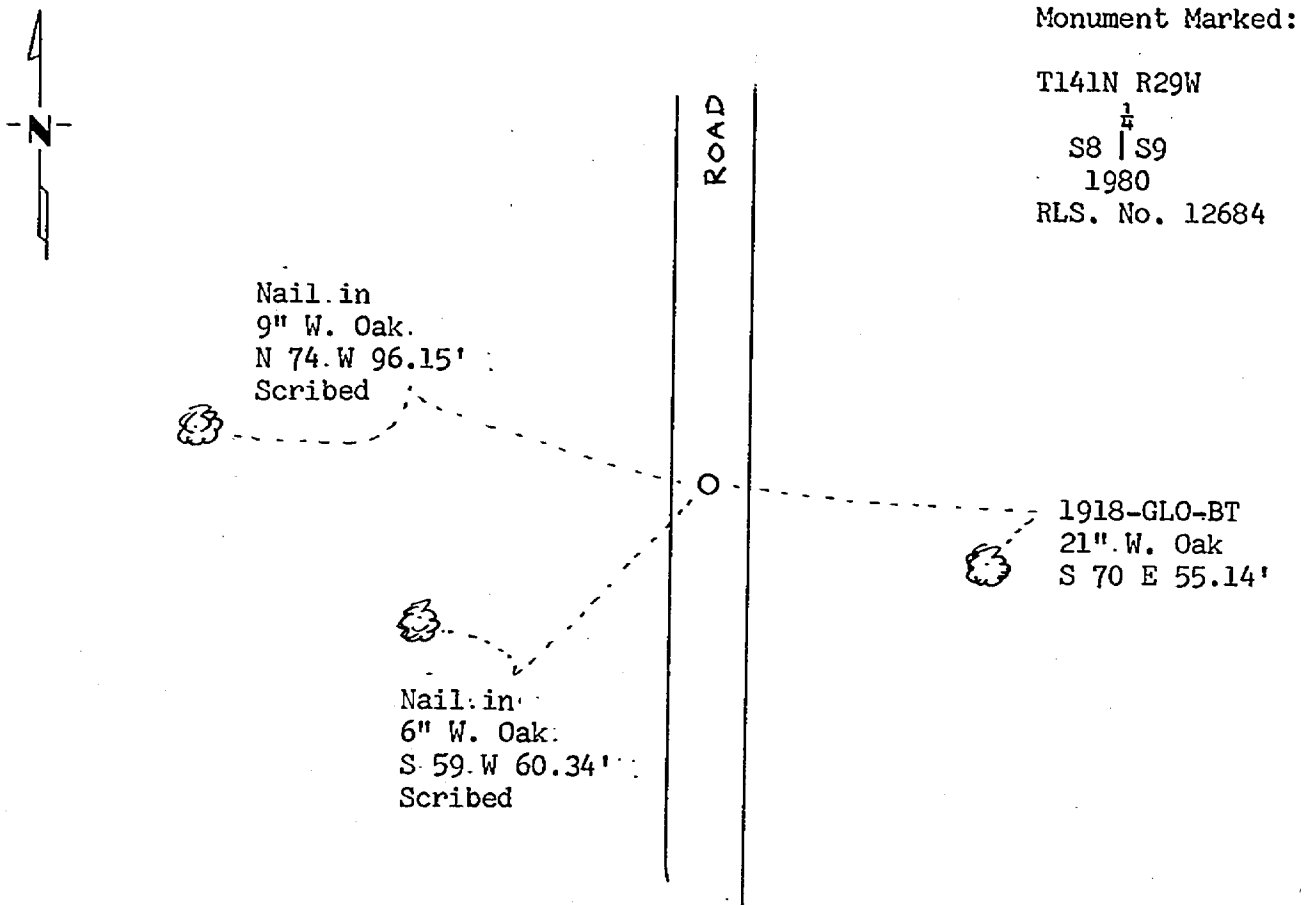
EAST QUARTER Corner of Section 8, Township 141, Range 29, 5th P.M.

STATE OF MINNESOTA, County of CASS

At the corner location shown on the sketch:

- On 7/2/80 found a 1" iron pipe in road as set in 1918 and one 1918
DATE
bearing tree and one bearing tree stump.
 - left monument as found, lowered monument, removed monument (explain)
- On 7/2/80 placed a 2" x 24" galvanized iron pipe with marked brass
DATE
cap down 14" below road surface.

SKETCH OF REFERENCE TIES



BEARINGS ARE APPROXIMATE

Statement of evidence relative to this corner location is on back of page 260981

I hereby certify that this document and the data contained herein was prepared by me or under my direct supervision.

Nancy H. Stevenson 12-15-81
SIGNATURE DATE

Registration No. 12684

- Land Surveyor, Professional Engineer
- County Surveyor, County Engineer

OFFICE OF THE COUNTY RECORDER

County of Cass

I hereby certify that this document was filed in the Co. Recorders office at 9:15 A. M. on the 31 day of Dec. A.D., 19 81

County Recorder Beverly Hendricks

By MS, Deputy

DOCUMENT NO. 260981

Statement of Evidence:

- 1873 U.S. General Land Office survey set wood post for this corner and marked the following bearing trees: 4" Maple N 23 W 15 links and 10" Y. Pine S 75 E 24 links.
- 1918 U.S. General Land Office dependent resurvey found the corner marked by an oak stake 5" x 5" x 48" marked "1/4 S" on the south face. The stump of the original Y. Pine bearing tree was found S 75° E 24 links marked "1/4 S". An iron pipe with a marked brass cap was set to mark the corner. The following bearing trees were marked: 15" W. Oak S 70 E 84 links and 12" W. Oak N 87-45 W 39 links.
- 1980 USES technician Gary Brama found an iron pipe in place 20" long 1" below road surface. The brass cap had been sheared off. A 21" W. Oak was found S 70° E at 84 links and a W. Oak stump was found N 87° W 39 links. A 2" x 24" galvanized iron pipe with marked brass cap was set in place of the found pipe down 14". The old pipe was set back on the SW side of the new monument. New bearing trees were marked and are shown on this certificate.
- 1981 On Dec. 1, I visited corner area and found items as per 1980 USFS report.
- 1981 County Surveyor's Records in the Recorder's Office were checked and no resurvey information was found on this corner.