

# CERTIFICATE OF LOCATION OF GOVERNMENT CORNER

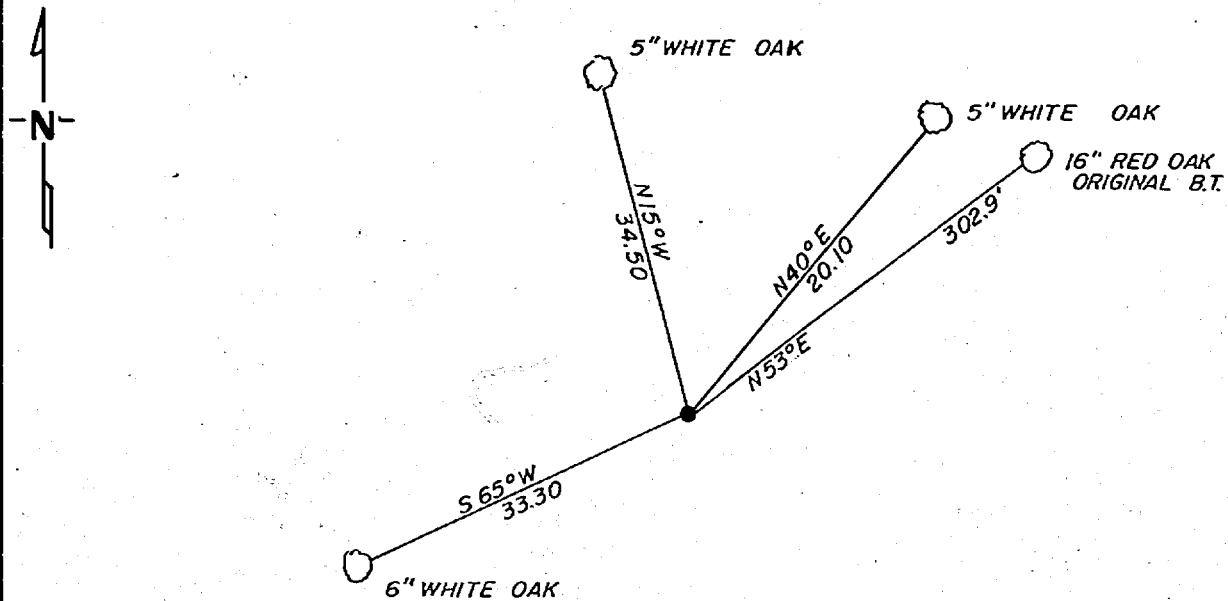
W 1/4 Corner of Section 12, Township 141, Range 28, 5 P.M.

STATE OF MINNESOTA, County of CASS

At the corner location shown on the sketch:

- On 10-21-81 found a 1"x36" pipe with brass cap standing in good condition with US Forest B.T. tags on trees as shown below  
 left monument as found,  lowered monument,  removed monument (explain)
- On \_\_\_\_\_ placed a \_\_\_\_\_  
DATE

### SKETCH OF REFERENCE TIES



not to scale

Statement of evidence relative to this corner location is on back of page.

I hereby certify that this document and the data contained herein was prepared by me or under my direct supervision.

Walter E. Lewis 12-7-81  
SIGNATURE DATE

Registration No. 11395

- Land Surveyor,  Professional Engineer
- County Surveyor,  County Engineer

260873

OFFICE OF THE REGISTER OF DEEDS

County of Cass

I hereby certify that this document was filed in the Reg. of Deeds office at 3:30 P. M. on the 18 day of Dec. A.D., 19 81

Register of Deeds Burdah Handrich County Recorder

By MS, Deputy

DOCUMENT NO. 260873

In 1918, Earl G. Harrington, a US Surveyor, set a 1"x36" iron pipe with brass cap for the W $\frac{1}{4}$ , Sec. 12 from which he made the following BT's A 20" black oak N 12 W 399 LKS and a 14" red oak N 53 $\frac{1}{2}$  E 459 LKS

On 10-21-1981, Walter E. Curo and Paul Johnson find the brass cap monument standing in good condition from which we find a hollow 16" red oak N 53 E 302.9 feet. There is no trace of the 20' black oak. The BT's shown were made by the US Forest Service.