

CERTIFICATE OF REPLACING SECTION CORNER

Corner to Sec. 12, 13 ($\frac{1}{4}$ cor.) T. 133N R. 31W

State of Minnesota }
 County of Cass } ss.

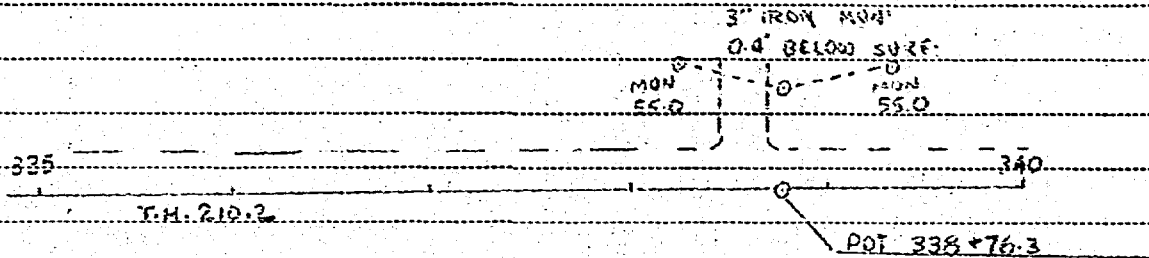
I hereby certify that on 3rd day of November 19 53

I found the Quarter Corner of Sections 12 & 13 - T 133 N. R 31 W
 which was evidenced by An iron Pipe

and I further certify that to perpetuate the location of such corner I did at the exact location thereof place a
 A galvanized iron monument with an aluminum cap of the type shown on
 permanent marker consisting of Plate 9310-1 of Dep't of Highways "Standard Detail Plates".

I further certify that I established ~~Two~~ Two
 reference or witness monuments consisting of Two of the above-specified monuments.
 which reference or witness monuments are located in the manner following:

- One monument placed on a line Northeast of the $\frac{1}{4}$ Corner and 55.0' from the $\frac{1}{4}$ Corner.
- One monument placed on a line Northwest of the $\frac{1}{4}$ Corner and 55.0' from the $\frac{1}{4}$ Corner.



Dated at Brainerd Minn., this 4th day of November 19 53

L. C. May Surveyor

OFFICE OF REGISTER OF DEEDS }
 County of Cass } ss.

I hereby certify that the within instrument was filed in this office for record on the 12
 day of Aug A. D. 19 81 at 4:10 o'clock P. M.

Deborah Hedrick
 MS Register of Deeds

By 258665 MICROFILM Deputy