

CERTIFICATE OF LOCATION OF GOVERNMENT CORNER

East Quarter Corner of Section 31, Township 135N, Range 31W, 5th P.M.

STATE OF MINNESOTA, County of Cass

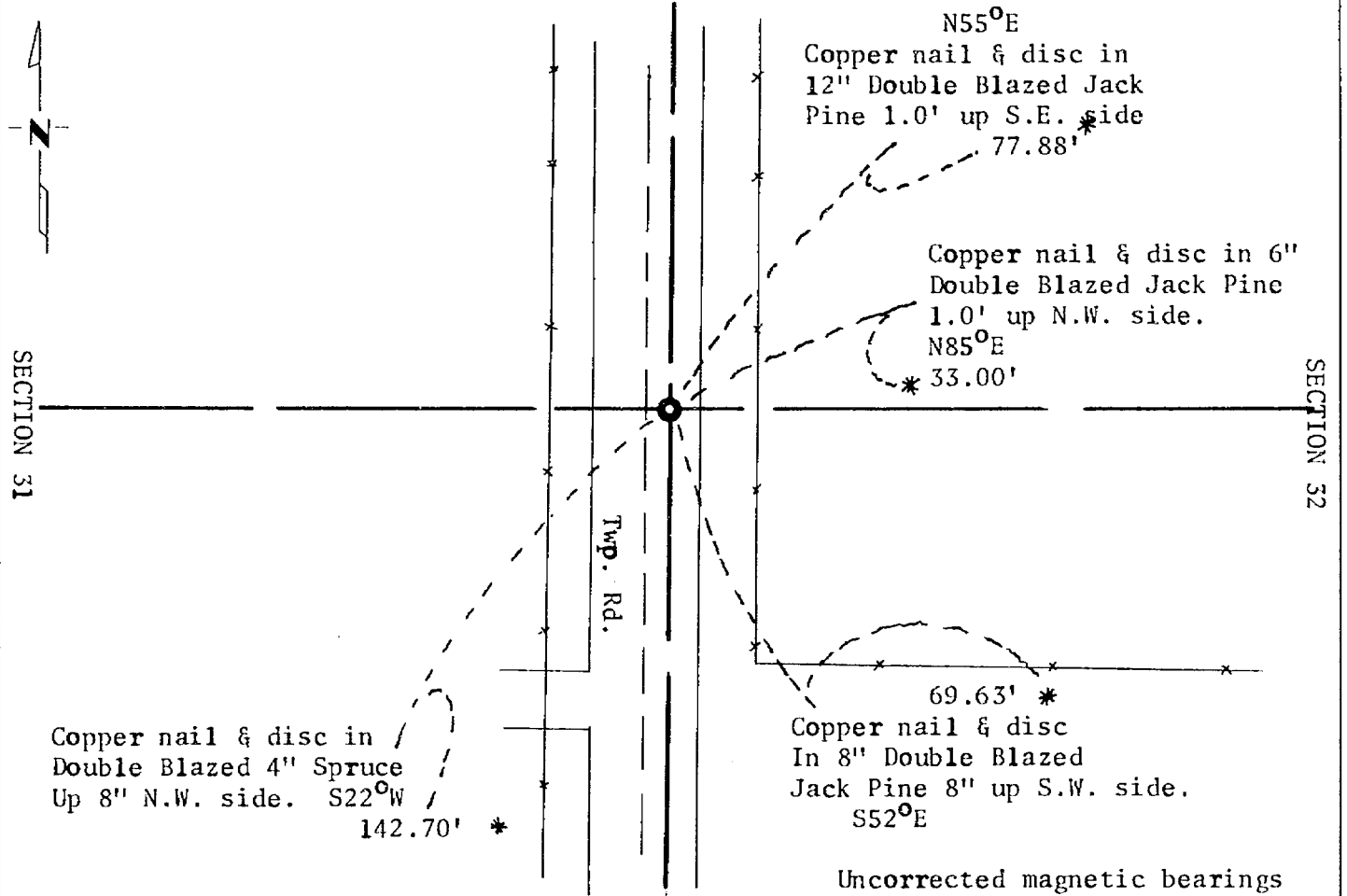
At the corner location shown on the sketch:

On 12/27/78 found nothing

left monument as found, lowered monument, removed monument (explain)

On 12/27/78 placed a cast iron monument stamped "Minn. Hwy. Dept."

SKETCH OF REFERENCE TIES



Statement of evidence relative to this corner location is on back of page.

I hereby certify that this document and the data contained herein was prepared by me or under my direct supervision.

Alphonse P. Della 2/15/79
SIGNATURE DATE

Registration No. 11873

- Land Surveyor, Professional Engineer
 County Surveyor, County Engineer

OFFICE OF THE COUNTY RECORDER

County of Cass

I hereby certify that this document was filed in the Co. Recorders office at 11:15 A.M. on the 24 day of Aug. A.D., 1979

County Recorder Beulah Hendrich
MS

By _____ Deputy

DOCUMENT NO. 247569 **MICROFILM**

Statement of Evidence: East Quarter Corner Section 31, Township 135 North,
Range 31 West, 5th Principal Meridian.

The Original Public Land Survey was run in 1870 and a wood post was set to mark the corner.

The Township records state that in 1904 the Town Board accepted the road on the east line of Section 31, being in place more than 6 years starting at the northeast corner of Section 31 and running south along the line to the Township line.

No other records could be found and longtime residents knew of no in place monuments.

In 1979 the Minnesota Department of Transportation set the corner on line between the northeast corner of Section 31 and the road-creek crossing on the east line of Section 31 at a proportionate distance to the original call for the corner and the creek. This proportion turned out to be the same as the north lines of Sections 31, 32, & 33. The southeast corner of Section 31 was vague and was not used as we felt the original call to the creek was the best evidence available.

For details and survey analysis contact the Minnesota Department of Transportation District Surveys Office in Brainerd.