

CERTIFICATE OF LOCATION OF GOVERNMENT CORNER

East Quarter Corner of Section 26, Township 138N, Range 30W, 5th P.M.

STATE OF MINNESOTA, County of Cass

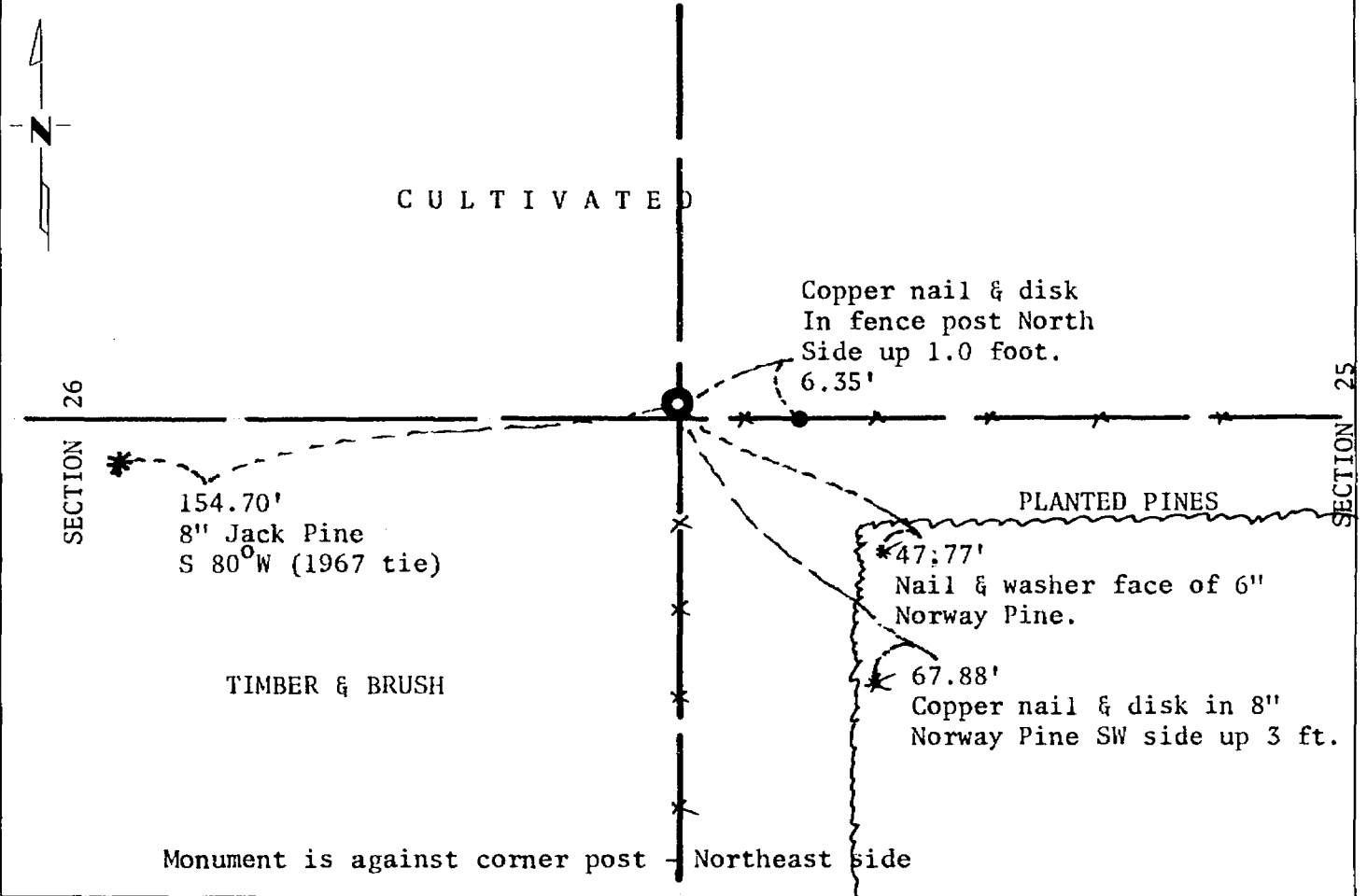
At the corner location shown on the sketch:

On 06/01/78 found a Cass County cast iron monument
DATE

left monument as found, lowered monument, removed monument (explain)

On _____ placed a _____
DATE

SKETCH OF REFERENCE TIES



Statement of evidence relative to this corner location is on back of page.

I hereby certify that this document and the data contained herein was prepared by me or under my direct supervision.

Alphonse P. Wells 7/31/78
SIGNATURE DATE

Registration No. 11873

Land Surveyor, Professional Engineer

County Surveyor, County Engineer

OFFICE OF THE COUNTY RECORDER

County of Cass

I hereby certify that this document was filed in the Co. Recorders office at 11:00 A.M. on the 14 day of August A.D., 1978

County Recorder Beulah Hendricks

By ee Deputy

DOCUMENT NO. 240561 **MICROFILM**

Statement of Evidence: See certificate on file in Cass County Courthouse
by R.F. Schneider dated 1967.

East Quarter of Section 26, Township 138 North,
Range 30 West, 5th Principal Meridian.