

CERTIFICATE OF LOCATION OF GOVERNMENT CORNER

Northeast Corner of Section 26, Township 138N, Range 30W, 5th P.M.

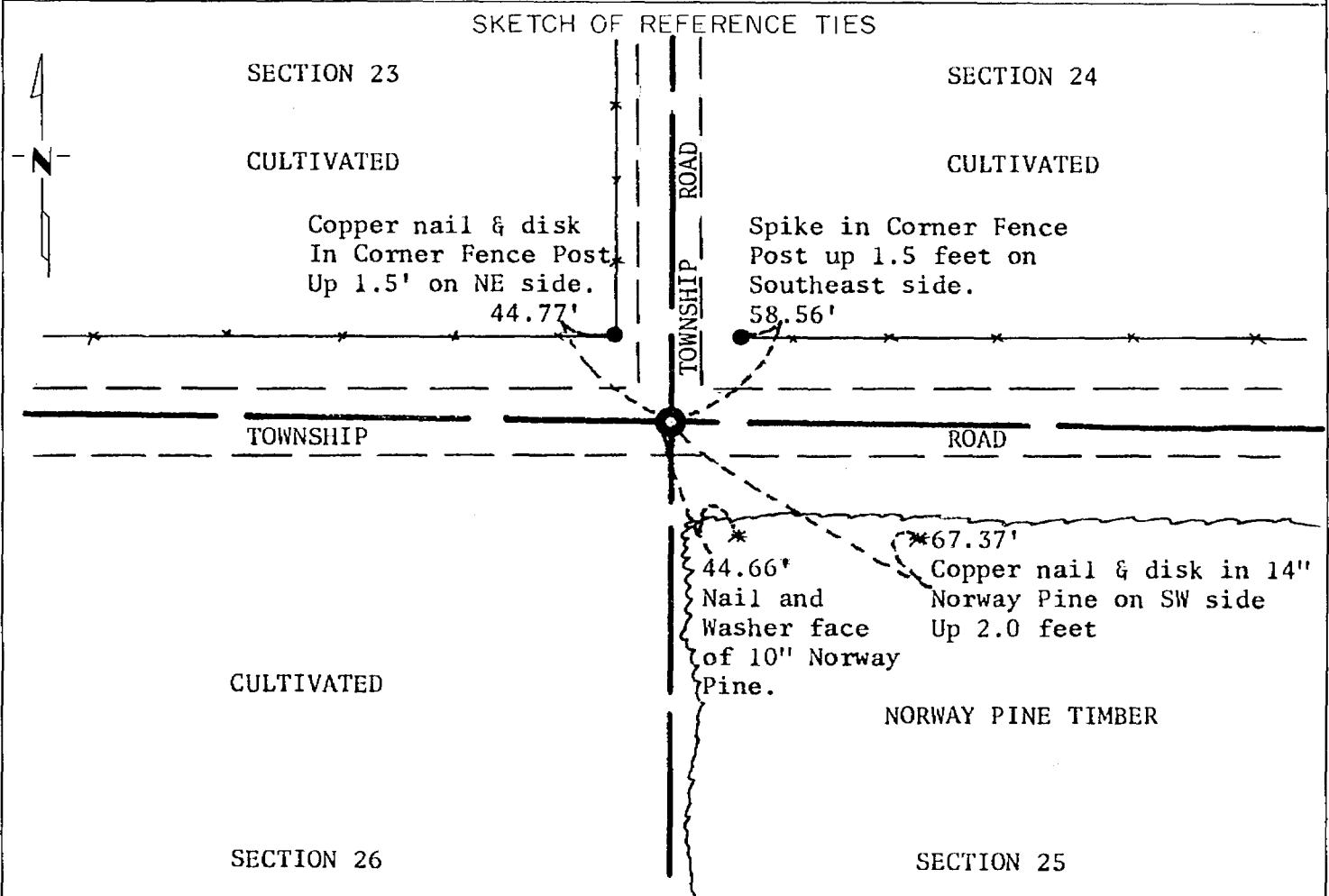
STATE OF MINNESOTA, County of Cass

At the corner location shown on the sketch:

On 06/01/78 found a 2½" capped iron pipe.
DATE

left monument as found, lowered monument, removed monument (explain)

On _____ placed a _____
DATE



Statement of evidence relative to this corner location is on back of page.

I hereby certify that this document and the data contained herein was prepared by me or under my direct supervision.

Alphonse P. Welle 7/31/78
SIGNATURE DATE

Registration No. 11873

- Land Surveyor, Professional Engineer
 County Surveyor, County Engineer

OFFICE OF THE COUNTY RECORDER

County of Cass

I hereby certify that this document was filed in the Co. Recorders office at 11:50 A.M. on the 14 day of August A.D., 19 78

County Recorder Beulah Hendricks

By le, Deputy

DOCUMENT NO. 24558 **MICROFILM**

Statement of Evidence: Northeast Corner Section 26, Township 138 North,
Range 30 West, 5th Principal Meridian.

The Original Public Land Survey was run in 1865 by Mr. George B. Wright and a wood post was set to mark the corner.

In 1907 Mr. John Curo set a 2½" capped pipe at the original location from the original bearing trees.

In 1978 the Minnesota Department of Transportation recovered Mr. Curo's pipe.

For details and survey analysis contact the Minnesota Department of Transportation District Surveys Office in Brainerd.

K.D.