

CERTIFICATE OF LOCATION OF GOVERNMENT CORNER

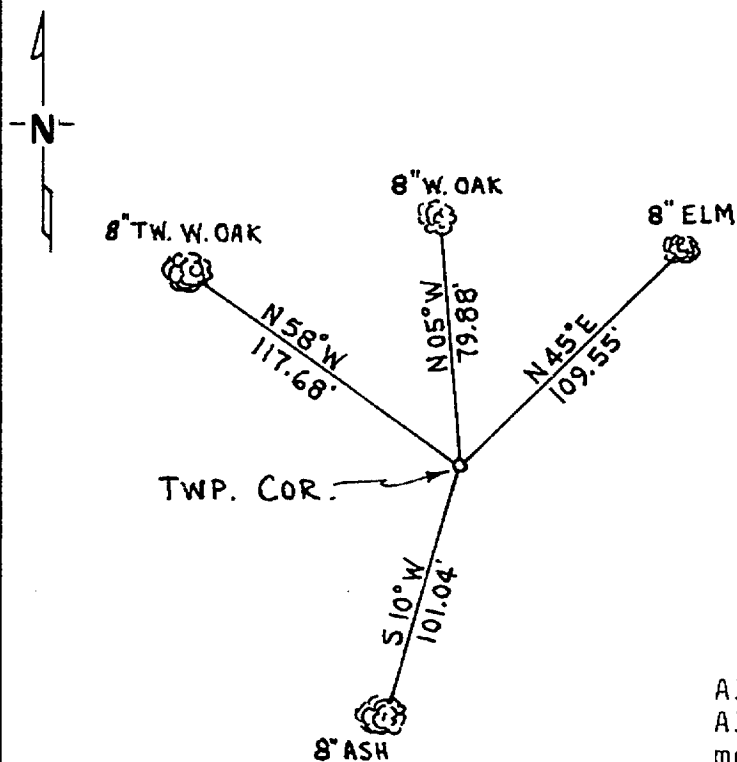
Southwest Corner of Section 31, Township 137, Range 30, 5th P.M.

STATE OF MINNESOTA, County of Cass

At the corner location shown on the sketch:

- On 10/26/77 ~~found~~ ^{DATE} XXXXX Reconstructed location of corner from record survey information and evidence from earlier record surveys
 left monument as found, lowered monument, removed monument (explain)
- On 10/26/77 ^{DATE} placed a Cast Iron County Monument 4" Dia. x 20" Long
0.8' below road surface

SKETCH OF REFERENCE TIES



All bearings to ties are approximate.
 All ties have two blazes with measurements taken to nail in lower blaze.

~~Statement of evidence relative to this corner location is on back of page.~~

I hereby certify that this document and the data contained herein was prepared by me or under my direct supervision.

R. F. Schneider

SIGNATURE

10/26/77

DATE

Registration No. 5740

Land Surveyor, Professional Engineer

County Surveyor, County Engineer

OFFICE OF THE REGISTER OF DEEDS

County of Cass

I hereby certify that this document was filed in the Reg. of Deeds office at 9 .M. on the 27 day of OCT. A.D., 1977

Register of Deeds Beulah Hendricks

By reb, Deputy

DOCUMENT NO. 235381