

Index No. _____

CERTIFICATE OF LOCATION OF GOVERNMENT CORNER

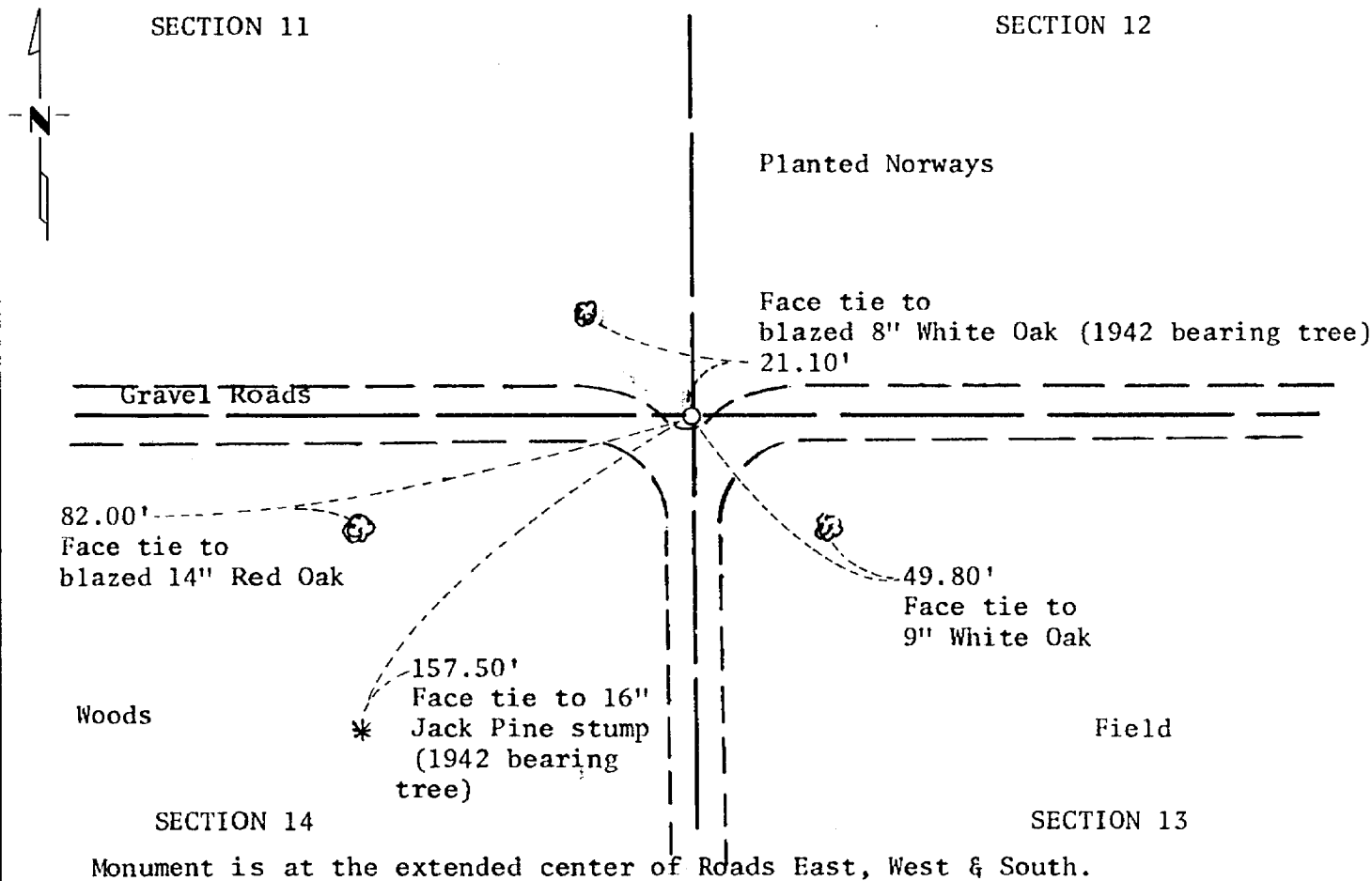
Northeast Corner of Section 14, Township 133N, Range 30W, 5th P.M.

STATE OF MINNESOTA, County of Cass

At the corner location shown on the sketch:

- On 3-21-77 found a 3" Iron Pipe flush
DATE
- left monument as found, lowered monument, removed monument (explain)
- On _____ placed a _____
DATE

SKETCH OF REFERENCE TIES



Statement of evidence relative to this corner location is on back of page.

I hereby certify that this document and the data contained herein was prepared by me or under my direct supervision.

Alphonse P. Wells 4/13/77
SIGNATURE DATE

Registration No. 11873

- Land Surveyor, Professional Engineer
- County Surveyor, County Engineer

OFFICE OF THE COUNTY RECORDER
County of Cass

²³²²⁶⁵
MICROFILM

I hereby certify that this document was filed in the Co. Recorders office at 9 A .M. on the 21st day of June A.D., 1977

County Recorder Beulah Hendricks
By BJK., Deputy

DOCUMENT NO. 232265

Statement of Evidence: Northeast Corner of Section 14, Township 133 North,
Range 30 West, 5th Principal Meridian.

The original land survey was run in 1870 by Mr. William P. Allen and a wood post was set to mark the corner.

In 1911 Mr. Harold Curo, Cass County Surveyor, set a 3" iron pipe at this location from Mr. Allen's bearing trees.

In 1915 Mr. P. R. Boese, for Mr. Curo, used the iron pipe for work in Section 13.'

In 1942 Mr. John Curo, Cass County Surveyor, made ties to four trees around this corner location.

In 1977 the Minnesota Department of Transportation recovered the 3" iron pipe and two of Mr. Curo's bearing trees.

For information and survey analysis, contact the Minnesota Department of Transportation District Surveys Office in Brainerd.