

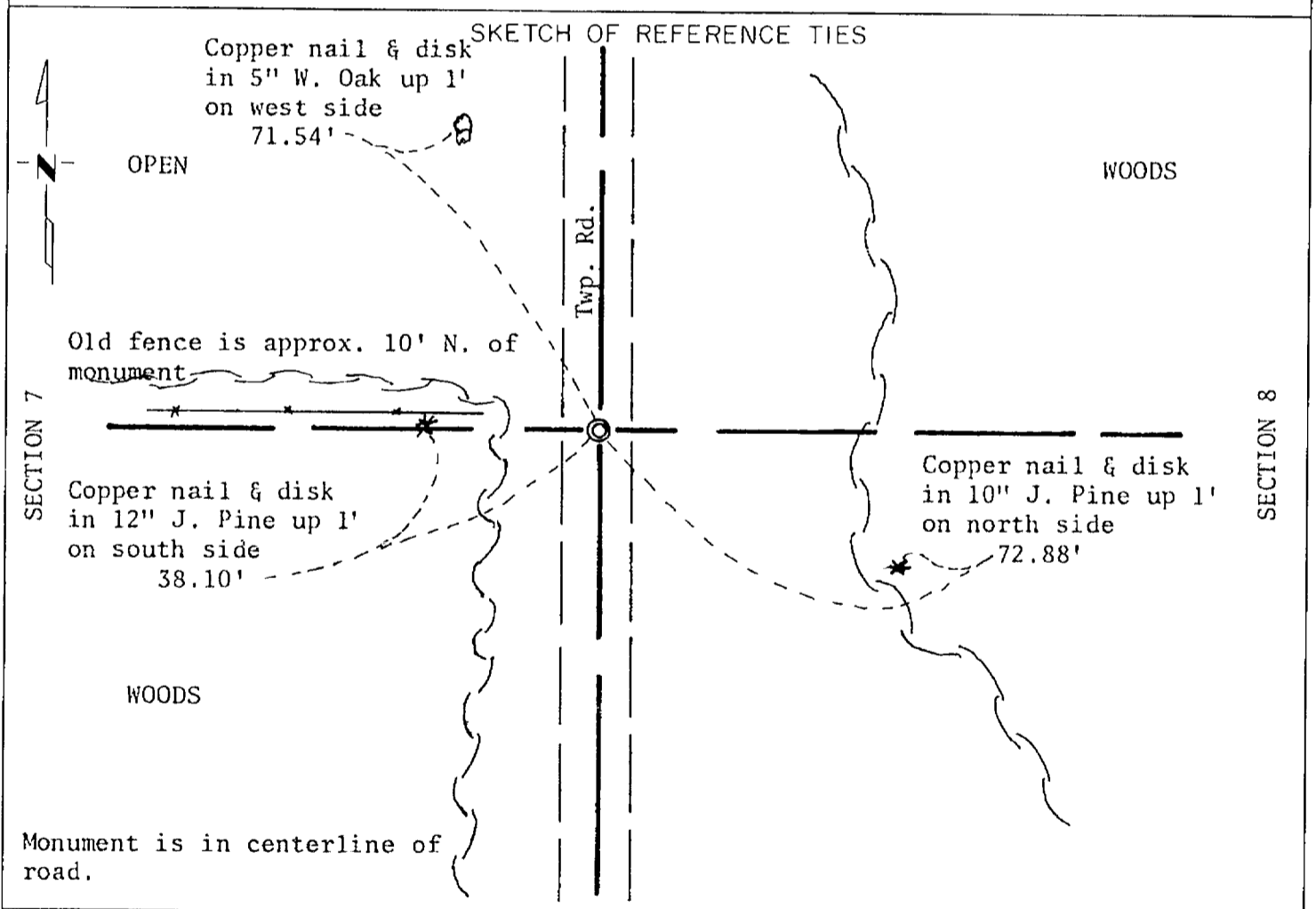
Index No. \_\_\_\_\_

# CERTIFICATE OF LOCATION OF GOVERNMENT CORNER

East Quarter \_\_\_\_\_ Corner of Section 7, Township 133N, Range 31W, 5th P.M.  
STATE OF MINNESOTA, County of Cass

At the corner location shown on the sketch:

- On 2-3-77 found a 2" iron pipe (flush)  
DATE
- left monument as found,  lowered monument,  removed monument (explain)
- On \_\_\_\_\_ placed a \_\_\_\_\_  
DATE



Statement of evidence relative to this corner location is on back of page.

I hereby certify that this document and the data contained herein was prepared by me or under my direct supervision.

Alphonse P. Welle 3/21/77  
SIGNATURE DATE

Registration No. 11873  
 Land Surveyor,  Professional Engineer  
 County Surveyor,  County Engineer

## OFFICE OF THE COUNTY RECORDER

County of Cass

I hereby certify that this document was filed in the Co. Recorders office at 9 A .M. on the 2 day of May A.D., 1977

County Recorder Brenda H. ...  
By N.E., Deputy

DOCUMENT NO. 251312

Statement of Evidence:

East Quarter Corner, Section 7, Township 133 North,  
Range 31 West, 5th Principal Meridian.

The Original Public Land Survey was run in 1863 by George B. Wright and a wood post was set to mark the corner.

In 1915 Mr. N. D. Gorman, Cass County Deputy Surveyor, set a 2" iron pipe at this corner in a subdivision survey of Sections 7 and 8.

In 1944 the Minnesota Highway Department recovered the 2" iron pipe and tied it into the T.H. 210 alignment.

In 1977 the Minnesota Department of Transportation recovered the 2" iron pipe and tied it into the Minnesota State Plane Coordinate System.

For details and survey analysis, contact the Minnesota Department of Transportation District Surveys Office in Brainerd.

Note: Mr. Gorman set this corner at its lost location, midway and on line between the Northeast Corner of Section 7 and the Northeast Corner of Section 18.

This location fits the occupation lines more to the interior of Section 7 although the fence west at the corner location lies 10 foot north of the location. The Minnesota Department of Transportation accepts the pipe as the East Quarter Corner of Section 7.