

Index No. _____

CERTIFICATE OF LOCATION OF GOVERNMENT CORNER

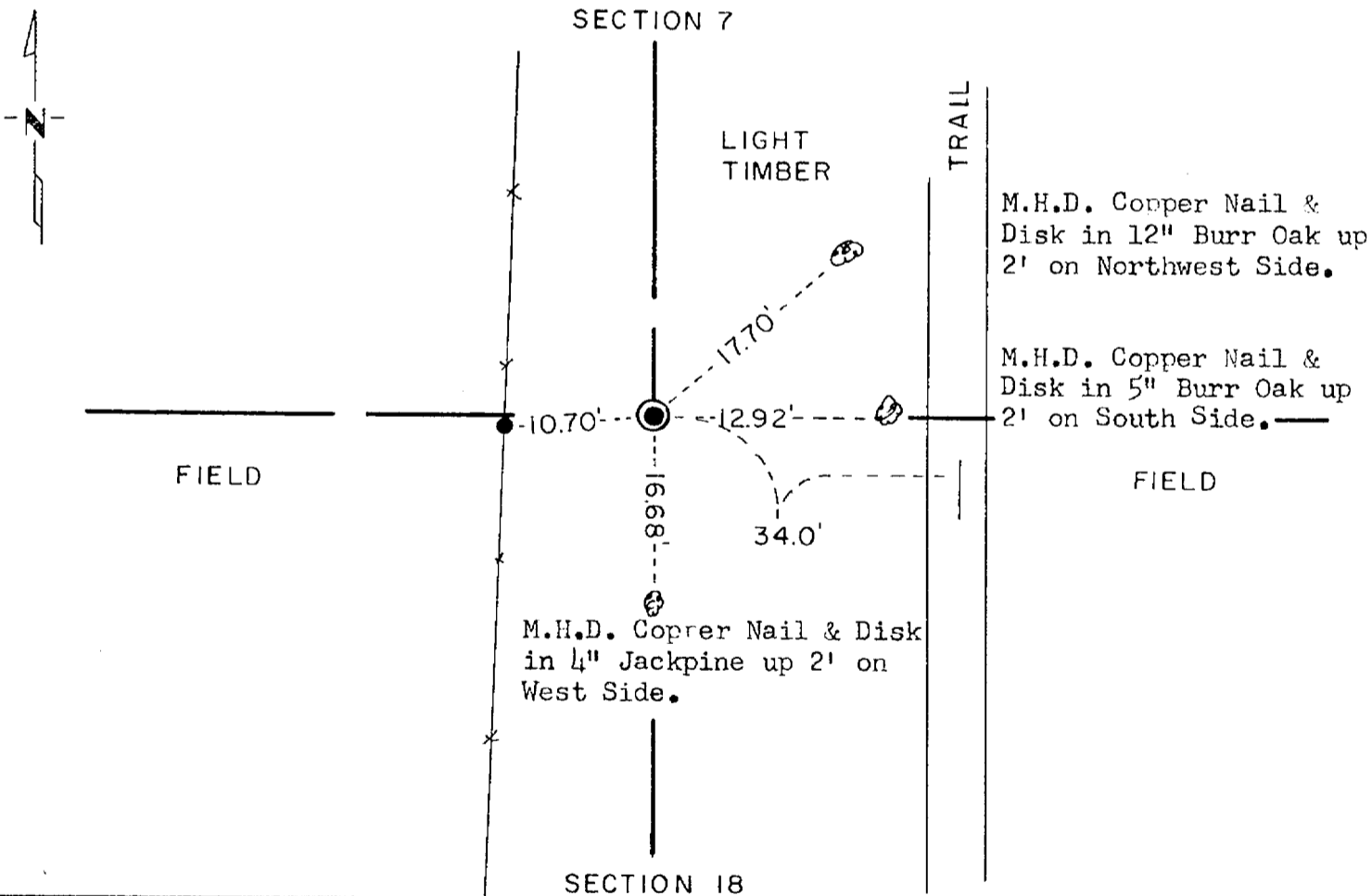
North Quarter Corner of Section 18, Township 133N., Range 31W., 5th. P.M.

STATE OF MINNESOTA, County of Cass

At the corner location shown on the sketch:

- On 7/24/75 found a 2" Capped Iron Pipe up 2'.
DATE
- left monument as found, lowered monument, removed monument (explain)
- On _____ placed a _____
DATE

SKETCH OF REFERENCE TIES
SECTION 7



Statement of evidence relative to this corner location is on back of page.

I hereby certify that this document and the data contained herein was prepared by me or under my direct supervision.

Alphonse P. Welle 3/21/77
SIGNATURE DATE

Registration No. 11873

- Land Surveyor, Professional Engineer
- County Surveyor, County Engineer

OFFICE OF THE COUNTY RECORDER

County of Cass

I hereby certify that this document was filed in the Co. Recorders office at 9 A .M. on the 2 day of May A.D., 19 77

County Recorder Paul H. Hendricks

By N.S., Deputy

DOCUMENT NO. 231311

Statement of Evidence:

North Quarter Corner, Section 18, Township 133 North,
Range 31 West, 5th Principal Meridian.

The Original Public Land Survey was run in 1863 by George B. Wright and a wood post was set to mark the corner.

In 1915 Mr. N. D. Gorman, Cass County Deputy Surveyor, set a 2" iron pipe at this location.

In 1976 the Minnesota Highway Department found Mr. Gorman's iron pipe and tied it into the Minnesota State Plane Coordinate System.

For details and survey analysis, contact the Minnesota Department of Transportation District Surveys Office in Brainerd.

Note: Mr. Gorman established this corner at a proportional distance between the Northeast Corner of Section 18 and the Northwest Corner of Section 18.

This location lies two rods west of an old road bed and fits the projection of occupation lines lying 1/4 mile to the north. The Minnesota Department of Transportation accepts this location as the North Quarter Corner of Section 18.