

CERTIFICATE OF LOCATION OF GOVERNMENT CORNER

Northeast Corner of Section 12, Township 140, Range 27, 5th P.M.

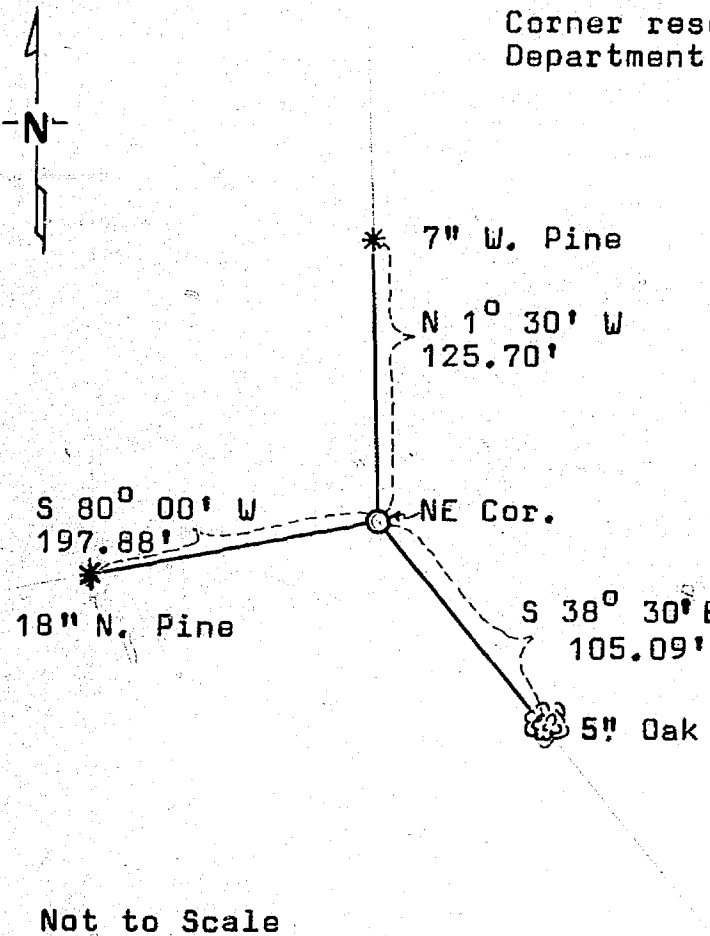
STATE OF MINNESOTA, County of Cass

At the corner location shown on the sketch:

- On 10/16/75 found a corner removed, Evidence perpetuating true
DATE corner location obtained from County Highway Survey notes
- left monument as found, lowered monument, removed monument (explain)
- On 5/6/76 placed a cast iron County monument 4" Dia top x 20"
DATE long buried 6" below surface of road shoulder.

SKETCH OF REFERENCE TIES

Corner reset using data from Cass County Highway Department survey notes for CSAH No. 7



All bearings are approximate.
All ties are blazed with measurements taken to nail in lower blaze.

Dimensions given are horizontal measurement.

Not to Scale

226539
OFFICE OF REGISTER OF DEEDS,

~~Statement of evidence relative to this corner location is on back of page.~~

226539

State of Minnesota, County of Cass
I hereby certify that the within instrument was filed in this office for record on the 14th day of July, A.D. 1976 at 9 o'clock A.M. and was duly recorded in Microfilm of Beulah Hendricks Register of Deeds

I hereby certify that this document and the data contained herein was prepared by me or under my direct supervision.

R. F. Schmidt 7/7/76
SIGNATURE DATE

Registration No. 5740
 Land Surveyor, Professional Engineer
 County Surveyor, County Engineer

OFFICE OF THE REGISTER OF DEEDS
County of Cass
I hereby certify that this document was filed in the Reg. of Deeds office, at 9 A. .M. on the 14th day of July, A.D., 1976
Register of Deeds Beulah Hendricks
By BJK, Deputy
DOCUMENT NO. 226539