

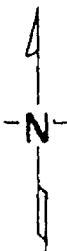
CERTIFICATE OF LOCATION OF GOVERNMENT CORNER

East Quarter _____ Corner of Section 2, Township 140, Range 30, 5th P.M.
 STATE OF MINNESOTA, County of Cass

At the corner location shown on the sketch:

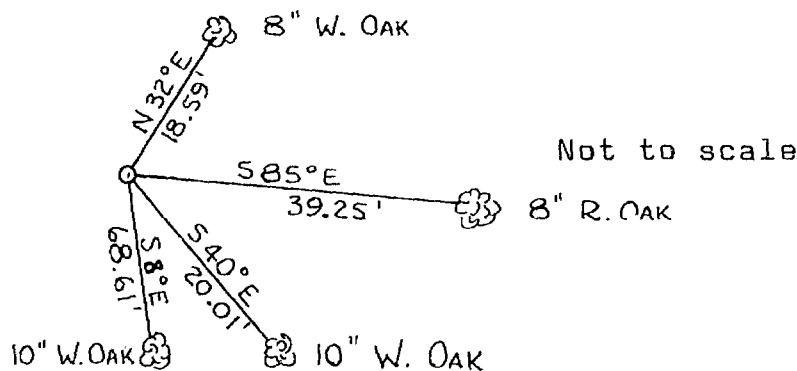
- On 6/4/75 found a Gov't Survey bearing tree
DATE
- left monument as found, lowered monument, removed monument (explain)
- On 10/29/75 placed a Cast Iron County Monument 4" Dia. x 20"
DATE long.

SKETCH OF REFERENCE TIES



Quarter corner set from Gov't. bearing tree Survey of 1865. 20" Norway Pine S 56° E 21.78'

New ties have two blazes. Distance shown is horizontal measurement from nail in lower blaze. All bearings to ties are approximate.



~~Statement of evidence relative to this corner location is on back of page.~~

I hereby certify that this document and the data contained herein was prepared by me or under my direct supervision.

Robert F. Schneider 1/13/76
SIGNATURE DATE

Registration No. 5740

- Land Surveyor, Professional Engineer
- County Surveyor, County Engineer

OFFICE OF THE REGISTER OF DEEDS

County of Cass

I hereby certify that this document was filed in the Reg. of Deeds office at 9 A .M. on the 13 day of January A.D., 1976

Register of Deeds Beulah Hendricks
 By NO, Deputy

DOCUMENT NO. 224012