

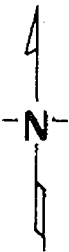
# CERTIFICATE OF LOCATION OF GOVERNMENT CORNER

East Quarter \_\_\_\_\_ Corner of Section 21, Township 139, Range 30, 5th P.M.  
 STATE OF MINNESOTA, County of Cass

At the corner location shown on the sketch:

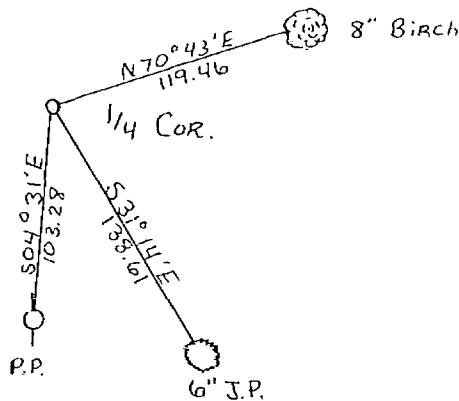
- On 11-4-75 found a 3/4" X 5' pipe bent over 2 feet under  
fill <sup>DATE</sup>
- left monument as found,  lowered monument,  removed monument (explain)
- On 11-10-75 placed a Cast Iron Monument 4" Dia. Top X 20" long  
under surface of Twp road. <sup>DATE</sup>

### SKETCH OF REFERENCE TIES



Set corner in place of bent 3/4" X 5' pipe found under 2 feet of fill in swamp in center of Twp road.

New ties have 2 blazes. Distance shown is horizontal measurement from brass B.T. tag on lower blaze.



No scale

~~Statement of evidence relative to this corner location is on back of page.~~

I hereby certify that this document and the data contained herein was prepared by me or under my direct supervision.

Walter E. Curo 12-18-75  
SIGNATURE DATE

Registration No. 11395

- Land Surveyor,  Professional Engineer
- County Surveyor,  County Engineer

OFFICE OF THE REGISTER OF DEEDS

County of Cass

I hereby certify that this document was filed in the Reg. of Deeds office at 9 A .M. on the 5 day of January A.D., 19 76

Register of Deeds Bentley Hendricks

By NB, Deputy

DOCUMENT NO. 223882