

Transit Book #1

S. R. H. #80

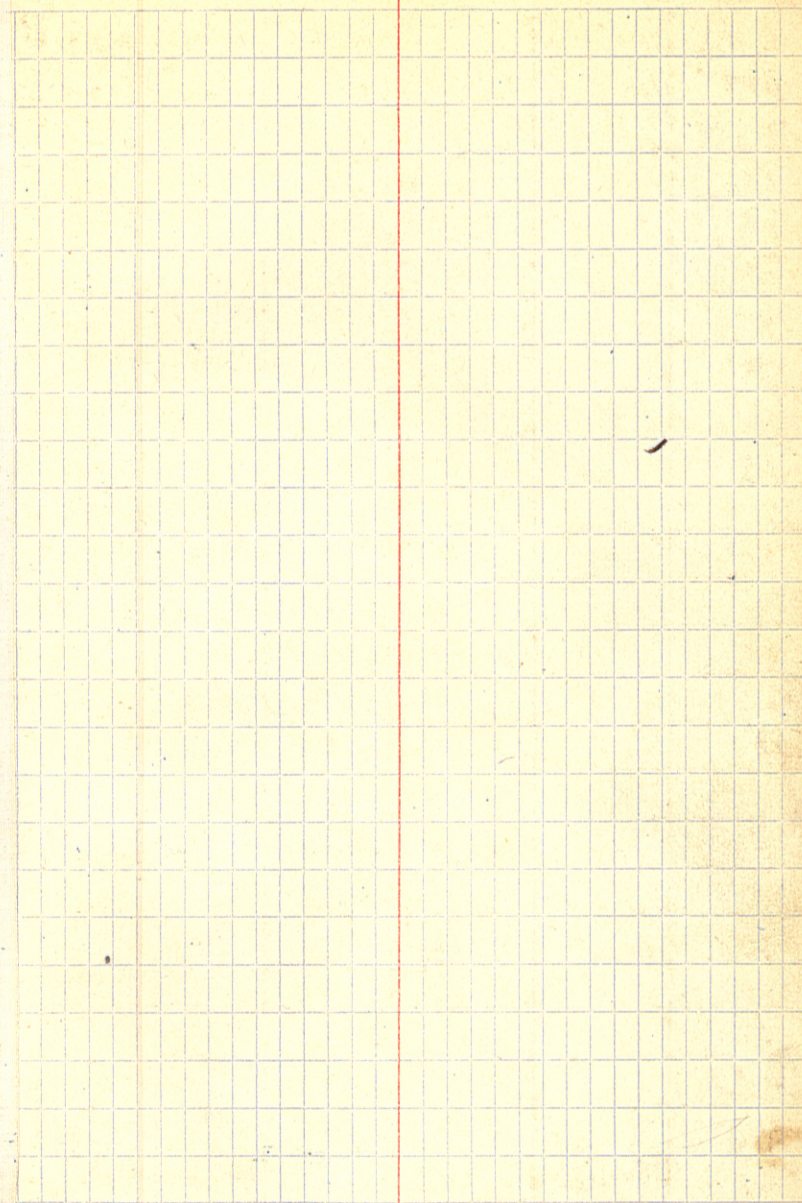
FIELD BOOK

189

22

2423

2759  
2463  
296

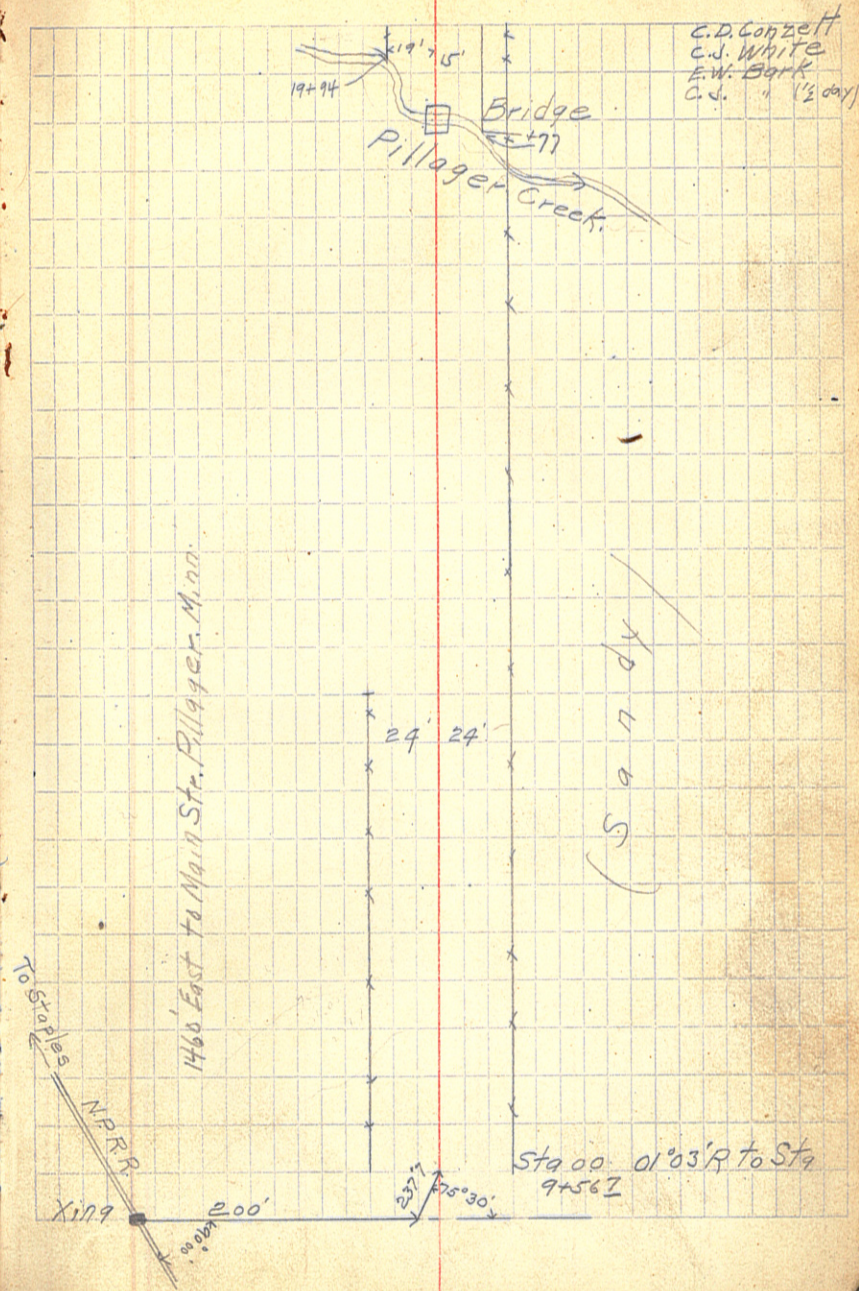


S. R. H. # 80

20  
+77<sup>5</sup>  
+53<sup>5</sup>  
19  
18  
17  
16  
15  
14  
13  
12  
11  
10  
+56<sup>2</sup>  
9  
8  
7  
6  
5  
4  
3  
2  
1  
00

△ 89° 23' R

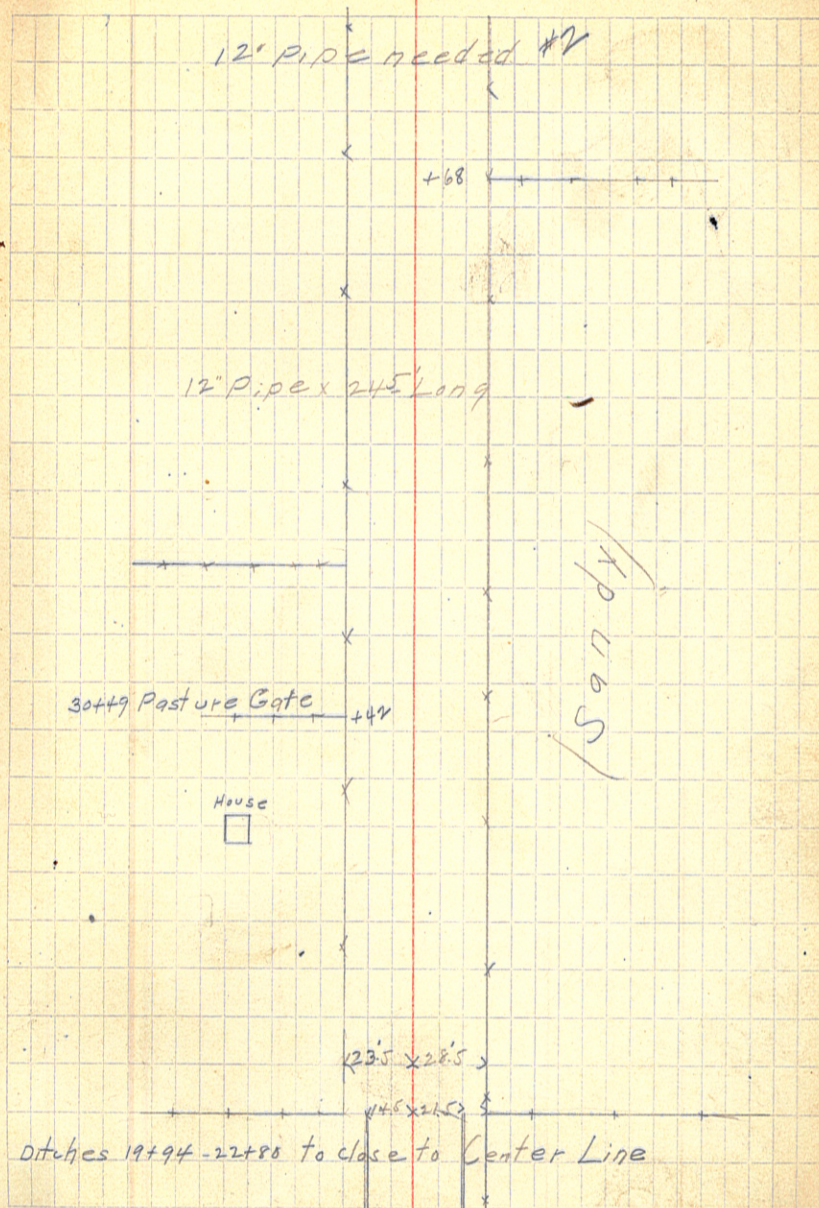
10-27-14 1.



S. B H #80

+15  
42  
41  
40  
39 39 to 42 Turnpiking  
38  
37  
+325  
36  
35  
34  
+21  
33  
32 12" Pipe  
31  
30 Bet' 31-32 2 Stumps  
29 Bet' 29-30 2 small stumps  
28 0 Between 28-29 3 small stumps  
27  
26 26+92 = Farm Gate  
25  
24 Sta 24-31 Turnpiking  
23  
+80  
22  
21 16 to 22 is Fill

10-27-14 2.



S. R. H. #80

65  
64  
63  
62  
61  
+ 425  
60  
59  
58  
57  
56  
55  
54  
53  
52  
51  
50  
+ 102  
49  
48  
47  
46  
45  
44  
43

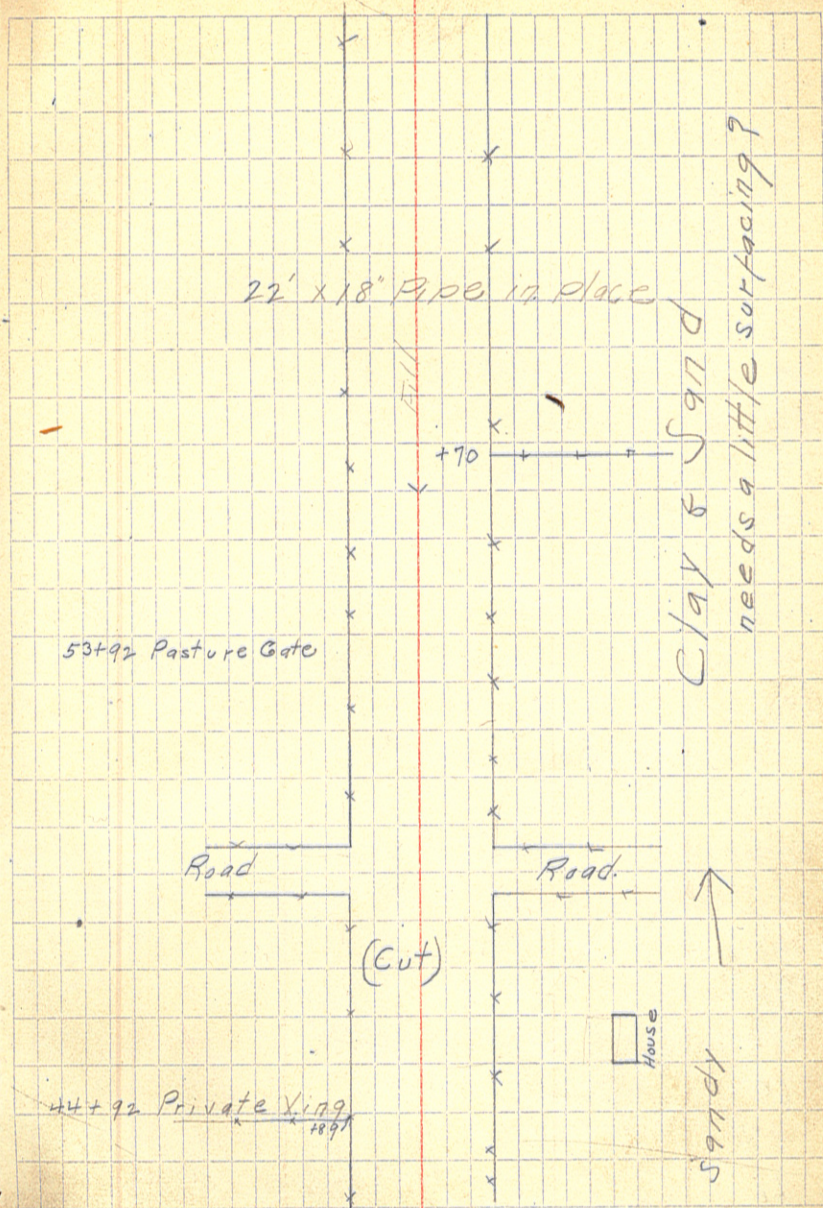
○

54-57 20 Stumps

○

45-46 2 Stumps

10-27-14 3



S. R. H #80

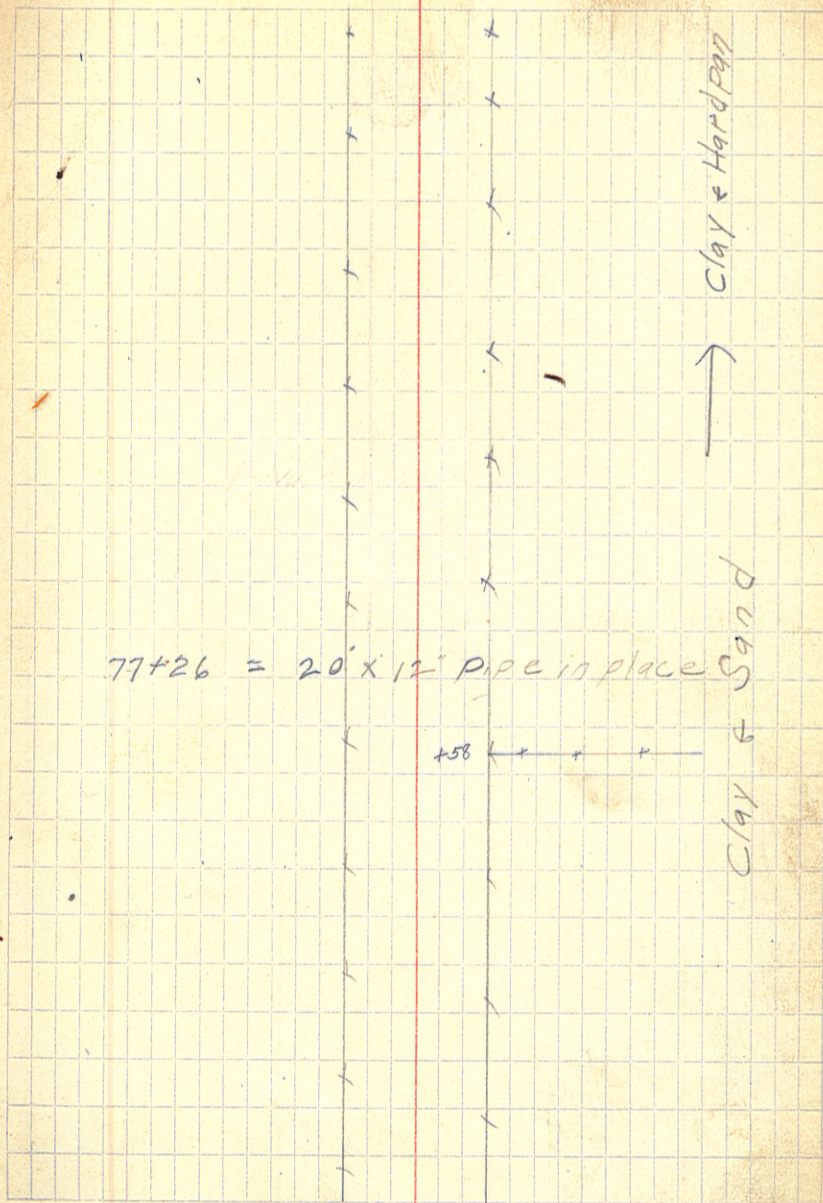
89  
88  
87  
86  
85  
84  
83  
82  
81  
+77  
80  
79  
78  
77  
76  
75  
74  
73  
72  
71  
70  
69  
68  
67  
66

Private Xing

0

10-27-14

4.



S.R.H #80

110

109

108

107

106

105

104

103

+83

18' x 12" Pipe in place - <sup>Removed</sup> in 1914

+37

Δ 5° 57' R

102

+228

Δ 6° 03' L

101

100

99

98

97

96

95

94

93

92

+84

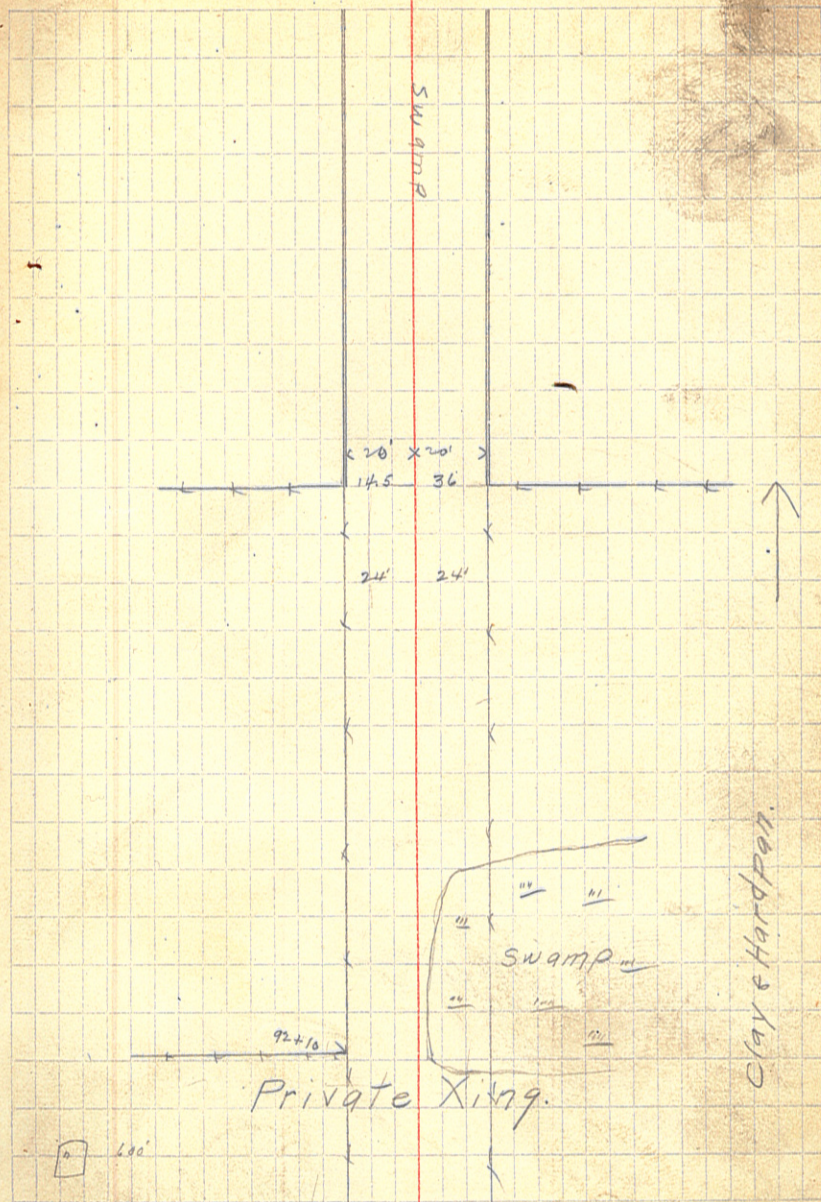
15' Pipe #3 Needed

91

90

10-27-14

5



S.R.H #80

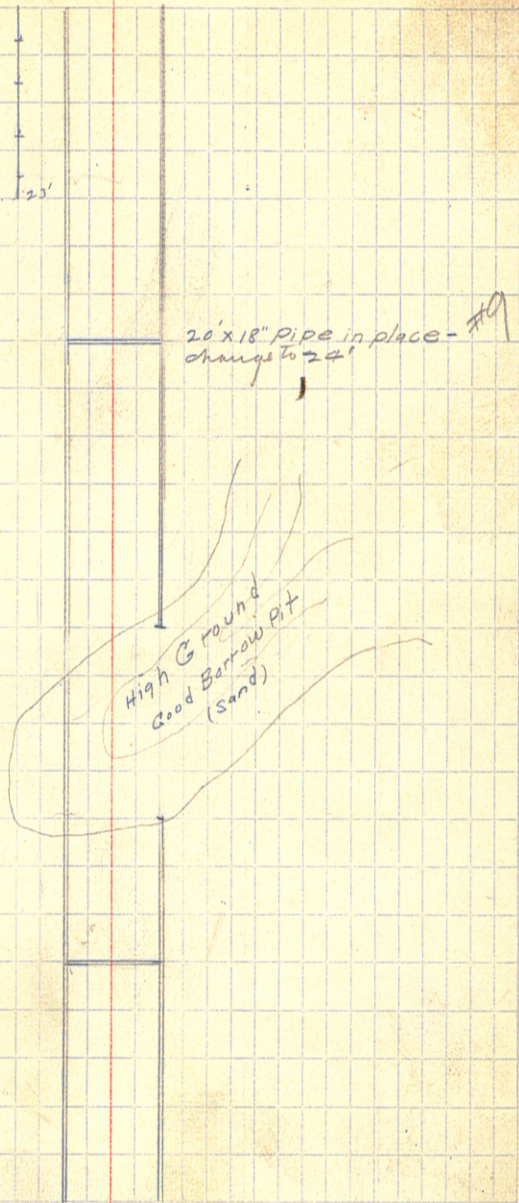
131.  
 130  
 129  
 + 80  
 128  
 127  
 + 20  
 126  
 125  
 124  
 123  
 122  
 + 32  
 121  
 120  
 119  
 118  
 117  
 116  
 + 735  
 115  
 114  
 113  
 112  
 111

○

15' x 12" Pipe in place  
 needs 184 - change to 15" x 24" #18

10-27-14 6

Ditch Dirt needs to be Spread out on Road  
 Ditches need to be deepened so as to Drain

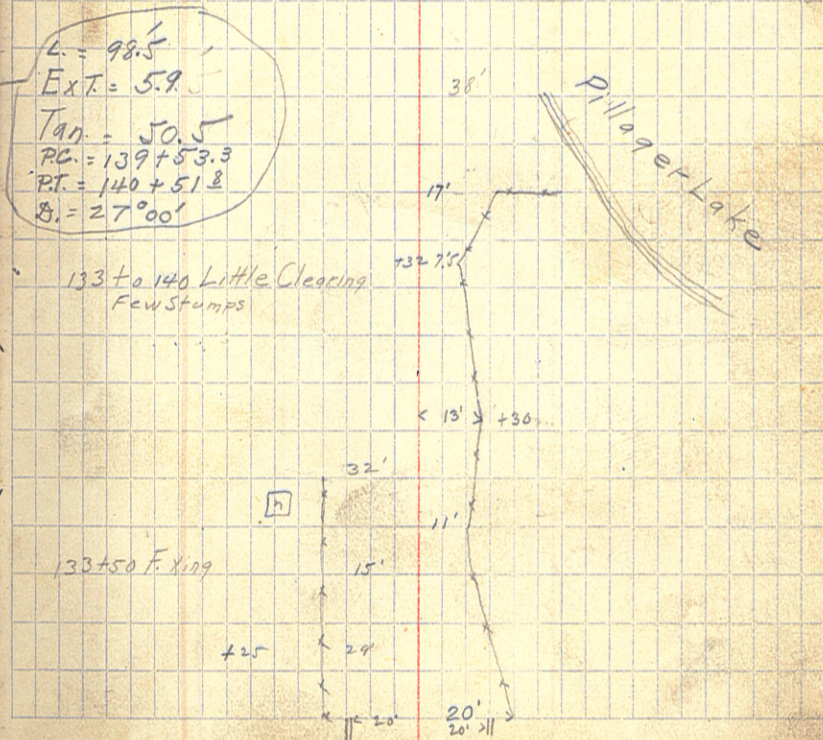




S.R.H. #80

+03<sup>E</sup>    Δ    26° 35' L ( P.I.  
Tan 50°  
External 6' )  
140  
+64  
139  
138  
137  
+55<sup>Z</sup>    Δ    7° 02' R  
136  
135  
134  
+40<sup>I</sup>    Δ    21° 03' R  
133  
132  
+75    ○

10-27-14 7



S. R. H. #80

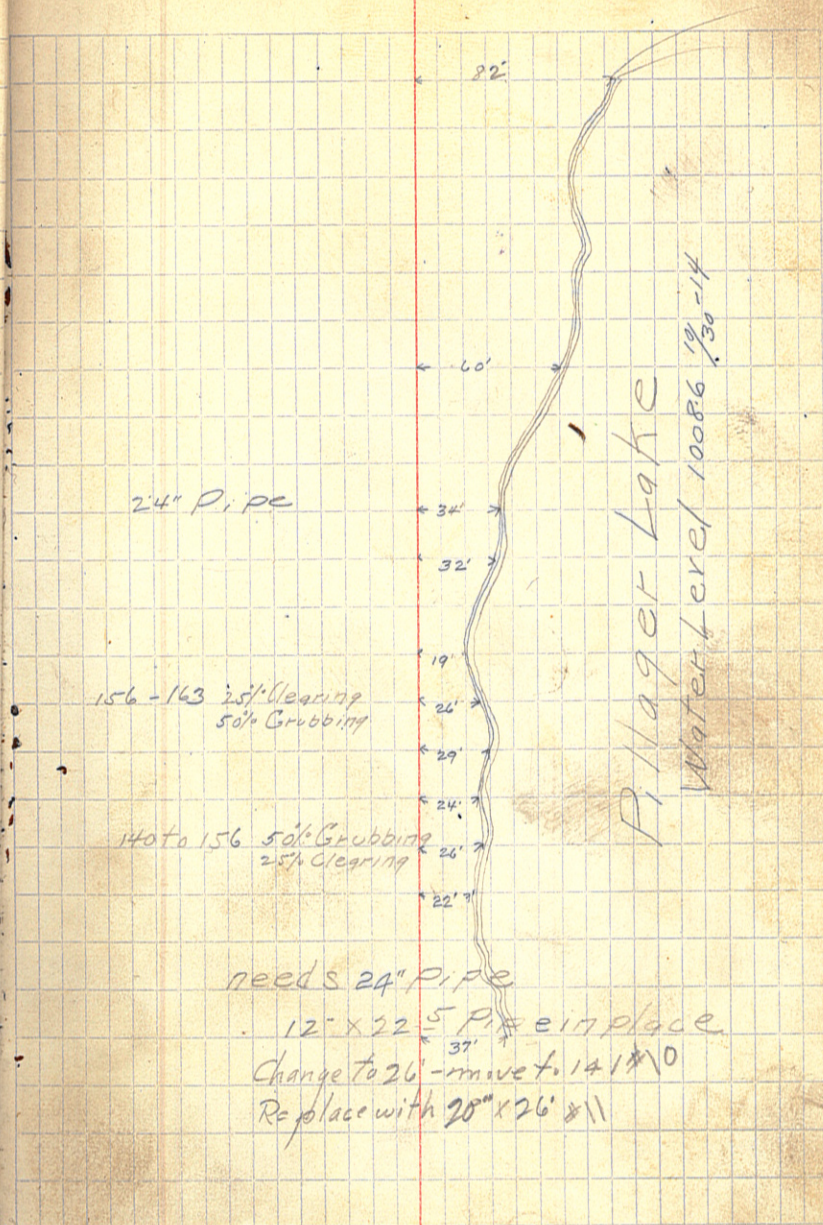
+98<sup>2</sup> Δ 33° 24' L P.I. (Sta. 161+50 Off. 2.8)  
 161 (Tan = 100' 162+50 2.4)  
 160 (Ext = 115)  
 159 (P.C. 160+96.5 Tan 101.4)  
 158 (P.T. 162+93.3 L. 196.5)  
 157  
 156

+50<sup>3</sup> Δ 26° 47' R P.I. (Sta. 155 Offset 2.4)  
 155 (Tan = 100' " 156 " 2.4)  
 154 (Ext = 10.3)  
 153 (Tan 101.2 P.C. = 154+49.1)  
 152 (13° 30' P.T. = 156+47.5)  
 151 (L. 198.4)  
 150

+55 Δ 16° 33' R P.I. EXT. 10  
 149 (T. = 50'  
 148 (Ext = 3.2)  
 147 (Tan. 50.7)  
 146 (16° 30')

145  
 +65  
 144  
 143  
 142  
 141

10-28-14 8

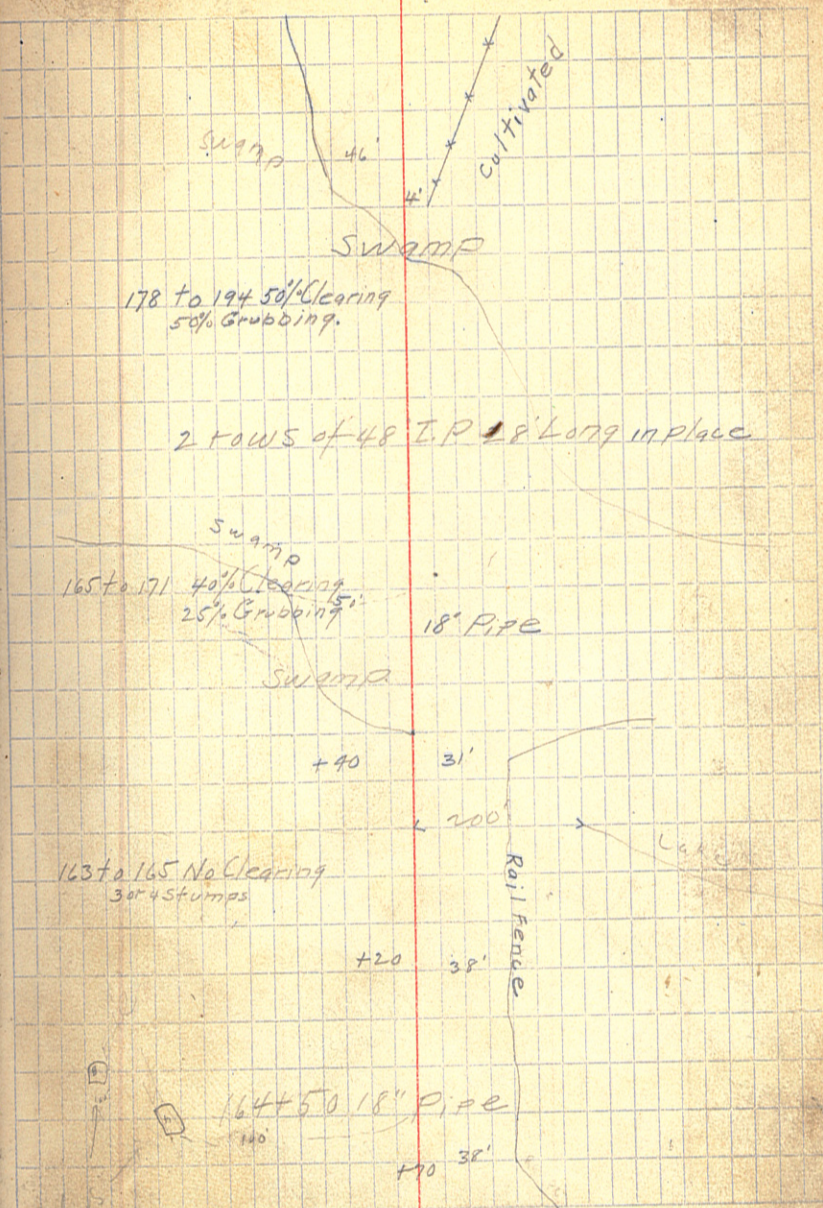


needs 24" Pipe  
 12" x 22.5" Pipe in place  
 Change to 26" - move to 141 x 10  
 Replace with 20" x 26" x 11

S.R.H. #80

10-28-14 9

182  
181  
180  
+375 Δ 47°55' L P.I.  
(Tan. 50'  
EXT. 10.1) P.C. = 178+88 L.  
179 P.T. = 179+76 8  
178 (Tan. 49.4)  
177 (D. 54°)  
176 (L. 88.7) ✓  
+66  
175  
+71 Δ 97° 06' R P.I.  
(Tan. 100' (Sta 174 offset 7')  
EXT. 45.7) " 175 " 2'  
173 (Sta 175+11 = 175+71)  
172 (Between 175+11 - P.T. + 176 = 29) ✓  
171 Tan 151.6 P.C. = 173+191  
D. 44° P.T. 175+40.6  
L. 220.7  
170  
+151 Δ 20° 40' L P.I.  
(Tan. 50'  
EXT. 3.5)  
169  
168  
167  
166  
165  
164  
163  
162



S.P.H. #80

202  
 201  
 200  
 +38  $\Delta$   $14^{\circ}16'$  P. P.I.  
 199 (Tan. 50'  
 EXT 3.2)  
 198  
 +96  
 197  
 196  
 195  $\circ$  P.O.S.T.  
 +564  $\Delta$   $33^{\circ}30'$  L P.I.  
 194 Tan. 100' Sta. 195 Offset 1.6  
 +065 EXT = 10.7 " 194 " 1.2  
 193  
 192  
 191  
 190  
 189  
 188  
 187  $\Delta$   $41^{\circ}39'$  L P.I.  
 186  
 185 (Tan = 100'  
 EXT = 156  
 Sta. 186 + 50 Offset 4.2  
 " 187 + 50 " 4.2)  
 +95  
 184 Tan 91.4  $\checkmark$  P.C. = 186 + 065 X  
 183 D. 24  $\checkmark$  P.T. 187 + 82'  $\checkmark$   
 L. 1735  $\checkmark$

10-28-14. 10

C.D. Conzett  
 C.J. White  
 E.W. Bark.  
 C.J. Bark.

D = 22  
 L = 152.3  
 T = 78.8  
 P.C. 193 + 76  
 P.T. 195 + 28  $\checkmark$

S  
 W  
 b  
 M  
 P

12" Pipe 20' Long in place

12" Pipe 18' L. in place

18" P.R.C. 50

179+50 to 186 Gravel + Black Loam.

S.R.H. #80

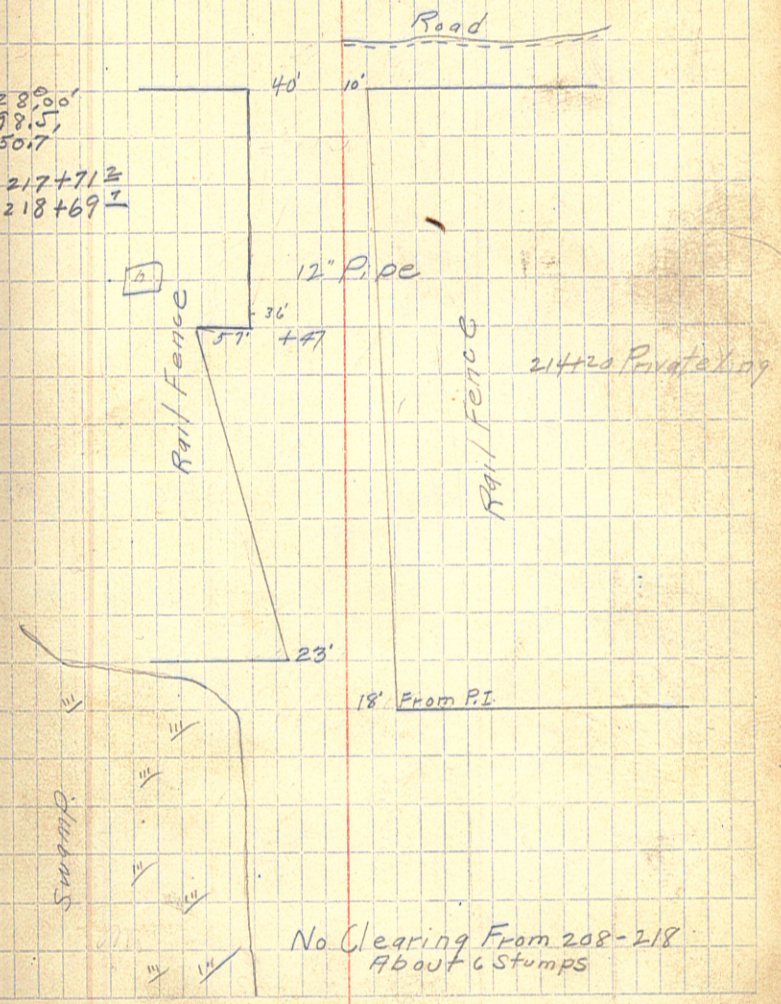
+489	△	38° 02' L
222		(Tan 50')
221		(Ext. 6.0)
220		
219		
+90		
+212	△	27° 35' R Stazie Offset 1/2
218		(Tan 50')
217		(Ext. 5.5)
216		
215		
214		
213		
212		
211		
210		
209		
+83		
+18	△	17° 52' R
208		Tan 50'
207		Ext 3.5
206		
205		
204		
203		

10-28-14 //

D = 40'  
 L = 95.1  
 Tan = 49.5  
 P.C. = 221 + 99.4  
 P.T. = 222 + 94.5

218 to 222 20% Clearing  
 10% Grubbing

D = 28.00'  
 L = 98.5  
 T = 50.7  
 P.C. = 217 + 71.2  
 P.T. = 218 + 69.7



S.R.H. #80

10-29-14

244

243

242

241

240

239

238

237

236

+85<sup>2</sup> Δ 12° 04' L

235

234

233

232 Δ 54° 06' R

231

230

+55

229

228

+42<sup>4</sup> Δ 56° 37' L

227

226

225

224

223

Tan. 100' Sta. 232+50 Offset 4.2  
External=200

10-29-14

10-28-14

Sta 227 Offset 2.8

" 228 " 1.5

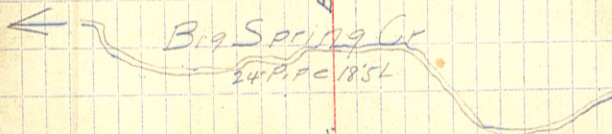
10-28-14

10-29-14 12

12" Pipe

234 to 269 No Clearing  
Some Grubbing

D = 35°  
L = 154.6  
T = 84.9  
PC = 231+15L  
PT = 232+69.2



D = 40°  
L = 141.5  
T = 78.7  
PC = 226+63.2  
PT = 228+05.2

S.R.H. # 80

267

266

265

~~265~~ O P.O.T.

264

63

62

61

60

59

58

57

56

255

260

254

253

252

251 O P.O.T.

250

249

248

247

246

245

10-29-14

13

267 to 285 Very Sandy

18" Pipe

S.B.H. #80

10-29-14

289  
 +29 ○ P.O.T.  
 288  
 287  
 286  
 285  
 +036 △ 54° 23' R (283+50 Offset 3.5  
 (Tan 100' 284+50 " 4.8  
 Ext. = 20.0)  
 284  
 283  
 282  
 281  
 280  
 279  
 278  
 277  
 276 △ 3° 55' L  
 275  
 274  
 273  
 272  
 271  
 270  
 269  
 +455 △ 30° 44' R P.I.  
 (T. 50')  
 (Ext. 7.3)  
 268

293 to 328 Little Clearing  
Some Grubbing  
Mostly Brushing

D = 35°  
 L = 155.4  
 T = 85.4  
 PC = 283 + 18 =  
 PT = 284 + 73 =

285 to 293 Little Clearing  
Some Grubbing

277 to 285 Medium Clearing

D = 30°  
 L = 102.4  
 T = 53.1  
 PC = 269 + 92 =  
 PT = 268 + 94 =

269 to 277 No Clearing

18" Pipe



S.R.H. #80

311

310

309

308

307

306

305

304

303

302

301

300

299

+83<sup>3</sup>

298

297

296

295

+25

294

+60

293

292

291

290

○

P.O.T.

(12/6/15 could not find original hub so replaced with a spike.-C.G.W.)

○

P.O.T.

(12/6/15 could not find original hub. and replaced with a spike.-C.G.W.)

10-29-14 15

L.D. Coppett.  
C.J. White  
E.W. Bark.  
C.J. Bark.

18" Pipe

10% Rock

295 to 306 Gravel & Clay

12" Pipe Fill

Road

S.P.H. #80

10-29-14<sup>16</sup>

+74<sup>L</sup>

△

00° 20' L

334

333

332

331

330

329

328

+71

△

22° 49' L

D = 20'  
L = 1144'  
T = 581  
PC = 327 + 122  
PT = 328 + 272

327

326

325

324

323

○

P.O.T.

(12/6/15 could not find original hub so replaced with a spike - c.g.w.)

322

321

320

319

318

317

316

315

314

313

312

12" PIPE

328 to 356 Brushing.  
Few Stumps

20% Boulders

15% Small Boulders  
Gravel & Clay

25% Boulders  
Some Extra Large Ones

S.P.H. #80

+646  $\Delta$  4° 06' R

356

355

354

353

352

351

350

349

348

347

✓ +65'  $\Delta$  7° 52' R

346

345

344

+75

343

342

341

340

339

338

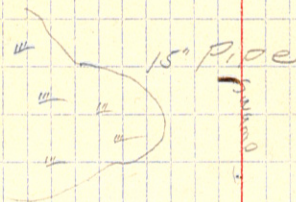
337

336

335

10-29-14 17

10% Boulders



10% Boulders  
Gravel & Clay

18" Pipe

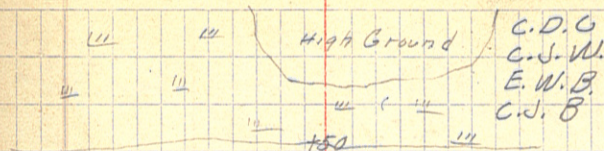
18" Pipe

## S.P.A. #80

377			
376			
375	△	37°4' R.	D = 40° L = 92.7 T = 48.9 PC = 374 + 51' PT = 375 + 43'
374		(Tan 50) Ext 7.5	
373	△	7°28' L.	
372			
371			
370			
369			
368			
367			
+12 <sup>2</sup>	△	20°27' L.	
366		(Tan 50) Ext 5.0	(Sta 366 Offset 2.4)
365			
+30			
364			
363			
362			
+76 <sup>2</sup>	△	26°27' L.	11-7-14 10-29-14
361		(Tan 50) Ext = 5.5	(362 offset 1.4)
360			
+50			
359			
358			
357			

18

11-7-14



Sta. 372 to 375 Coarse Gravel + Boulders.

368+35 12" Pipe

360 to 370 60% Clearing + Grabbing

364+30 15" pipe needed.

363+02 15" pipe needed.

D = 28.1  
L = 94.5  
T = 48.6  
PC = 361 + 28.2  
PT = 362 + 22.5

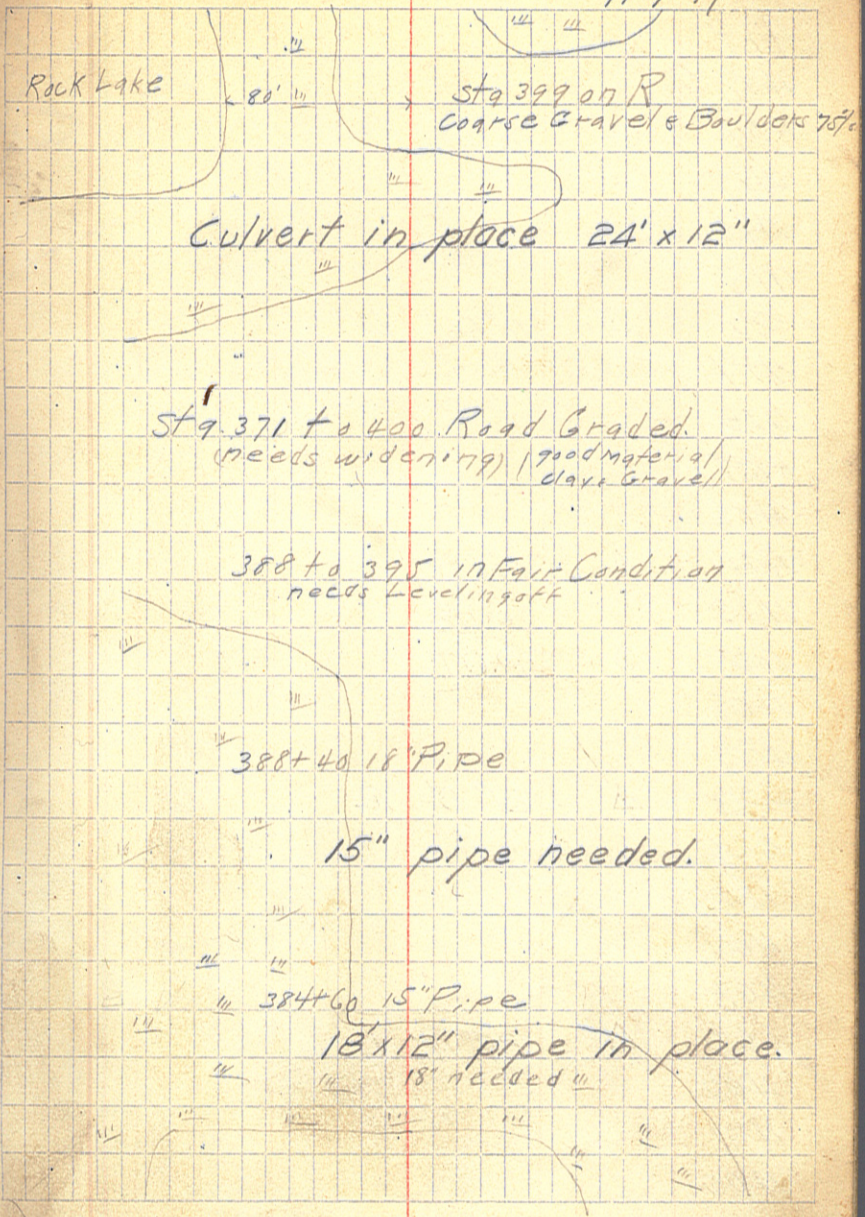
359+50 15" pipe needed.

SRH #80

+70     Δ     14° 25' L.  
 399     (Tan 50'  
 398     Ext. 40)  
 397  
 +86     Col.  
 396     Δ     16° 37' R.  
 395     (Tan 50'  
 394     Ext. 40)  
 393  
 392  
 391  
 390  
 +66 =     Δ     12° 52' R. (Spike)  
 389  
 388  
 387  
 +55     Δ     18° 50' L.  
 +15     (Tan 50'  
 386     Ext. 50)  
 385  
 384+76     Δ     19° 25' L.  
 +03     (Tan 50' (385 offset 18)  
 380     Ext. 50)  
 379     Δ     4° 59' R.  
 378

19

11-7-14



419		
418		
+19	⊙	P.O.T.
417		
416		
415		
+32	Δ	11°56' L.
414		
413		
+85		
412		
411	Δ	14°00' R. (Tan 50' Ext 3')
410		
409	⊙	P.O.T.
408		
407		
+33	Δ	21°8' R.
406		
405		
404		
403		
+68	Δ	29°12' L. (403 offset 2.2)
402		(Tan 50' Ext 7.0)
401		
400		

11-7-14

20

415 to 450 Turnpiking Completed  
(Sand needs surfacing)

414 To 436 + 16 = Turnpiked. (Completed.)  
(415 to be gone over)

16" pipe needed.

Sta. 410+50 12" pipe needed.

Sta. 405+50 24" pipe needed.

4' of Black soil then sand

D = 27°  
L = 108.4  
T = 55.8  
PC = 402 + 12.2  
PT = 403 + 20.2

400 to 415 Road Graded Sand  
(needs surfacing)

S.P.H. #80

+10

438

437

+16

Δ 89° 24' R.

D: 60°

L: 149.0

T: 99.0"

TC: 435+17°

P.T.: 436+66°

436

#35

434

433

+35

432

+38

431

430

429

+68

North End of Bridge

+52

South End of Bridge

428

427

426

425

423

422

421

+25

420

+40

11-7-14 21

18" pipe needed.

CENTER OF SEC 9  
134-30.

R.P. 18' Left.

33' Fence

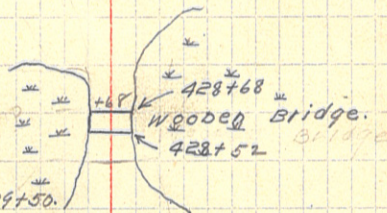
12" pipe needed.

Fill across

Swamp from

Sta. 428+50 to 429+50.

4' of Back Soil then Sand.



420+35  
old Road

12" pipe

12" pipe needed.

S.P.H. #80

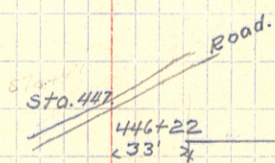
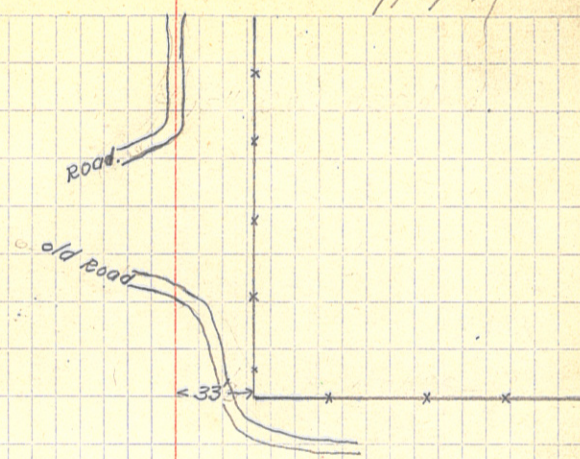
460  
459  
458 +36  
457  
456  
455  
454  
453  
452  
451  
450  
449  
448  
447  
446  
450  
445  
444  
443  
442  
441  
440  
439

Sta. 458+36 15" pipe needed.

○ P.O.T.

22

11-7-14



12" pipe needed.

439-455 Turnpiked (Completed)  
(Needs Surfacing)



S.P.H. #80

482

481

480

479

478

477

476

475

474

473

472

471

470

469

468

467

466

465

464

463

462

461

+ 247

461

○

P.O.T.

△

90° 33' L.

D = 60°

L = 150.9

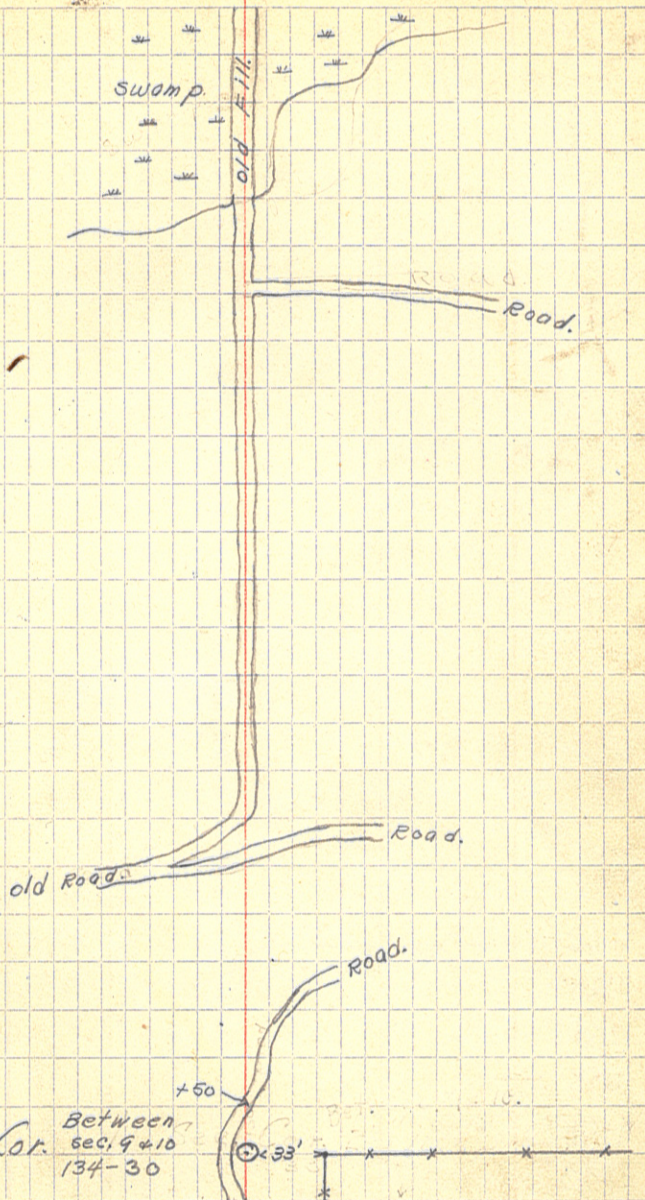
T = 10.10

P.C. = 460 + 23.2

P.T. = 461 + 74.9

2 1/2" Iron pipe

11-7-14 23



S.P.H. #80

3

463<sup>#</sup>

= 00 of Previous S. R. Survey

487

486

485

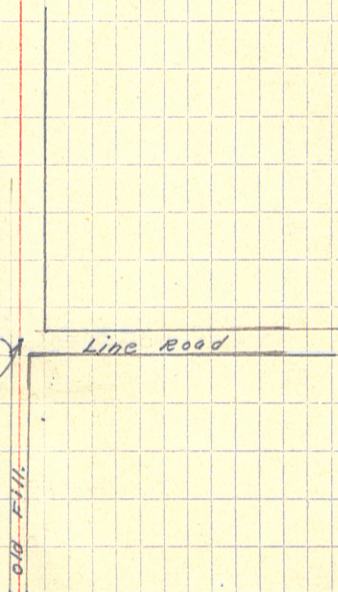
484

483

24

11-7-14

487+63<sup>#</sup> = 00.  
Beginning of  
Finished Grade.



S.R.H. #80

61+50

661

+50

668

+84

659

+50

658

+30

657

656

655

654

+50

742

653

652

+50

651

650

+50

649

+44<sup>+</sup>

+38<sup>+</sup>

648+12<sup>+</sup> = 105+67 of old Survey.

C.D. Conzett

C.J. White

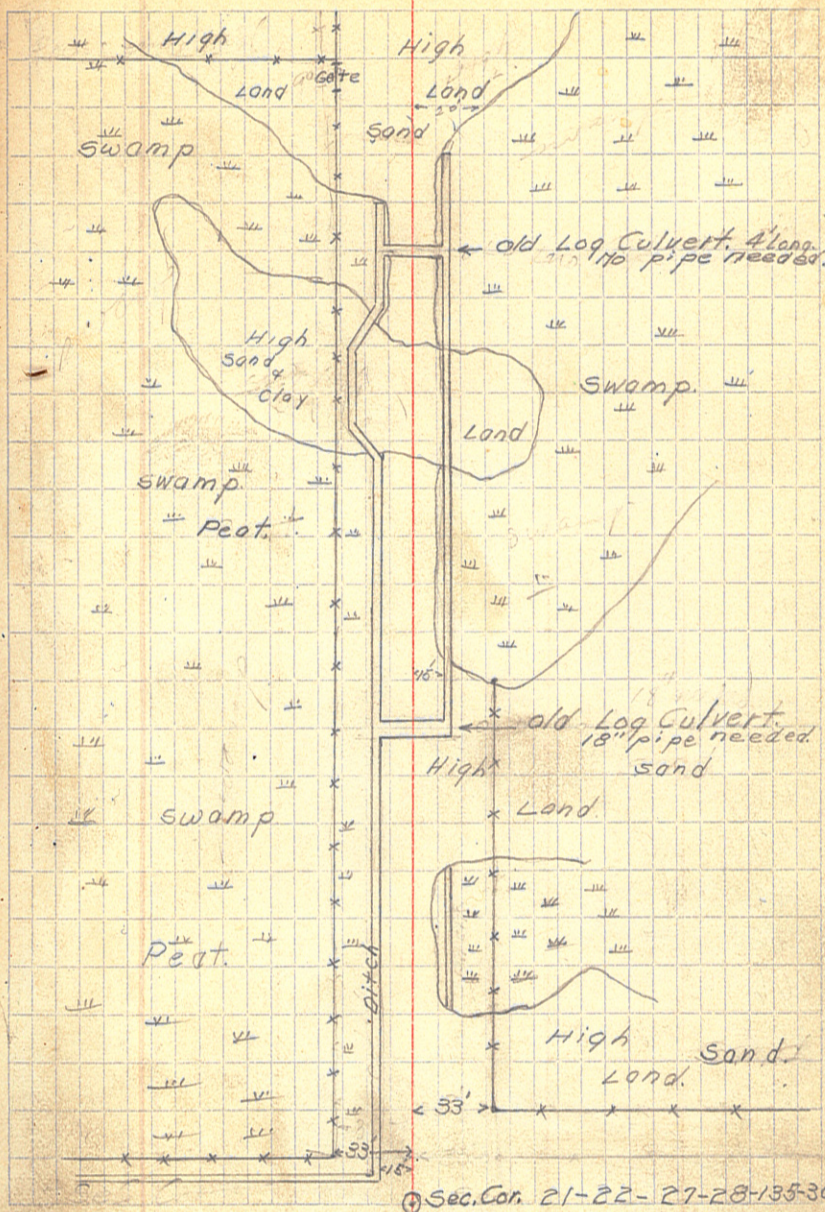
E.W. Bark

C.J. Bark

J.B. Crossman

11/10/14.

25



S.R.H. #80

682

681

680+00

○

P.O.T.

679

678

677

760

676

675

674+69"

○

P.O.T.

DATE 073

21-28

674

673

672

671

670

669

668

667

+60

+25

666

665

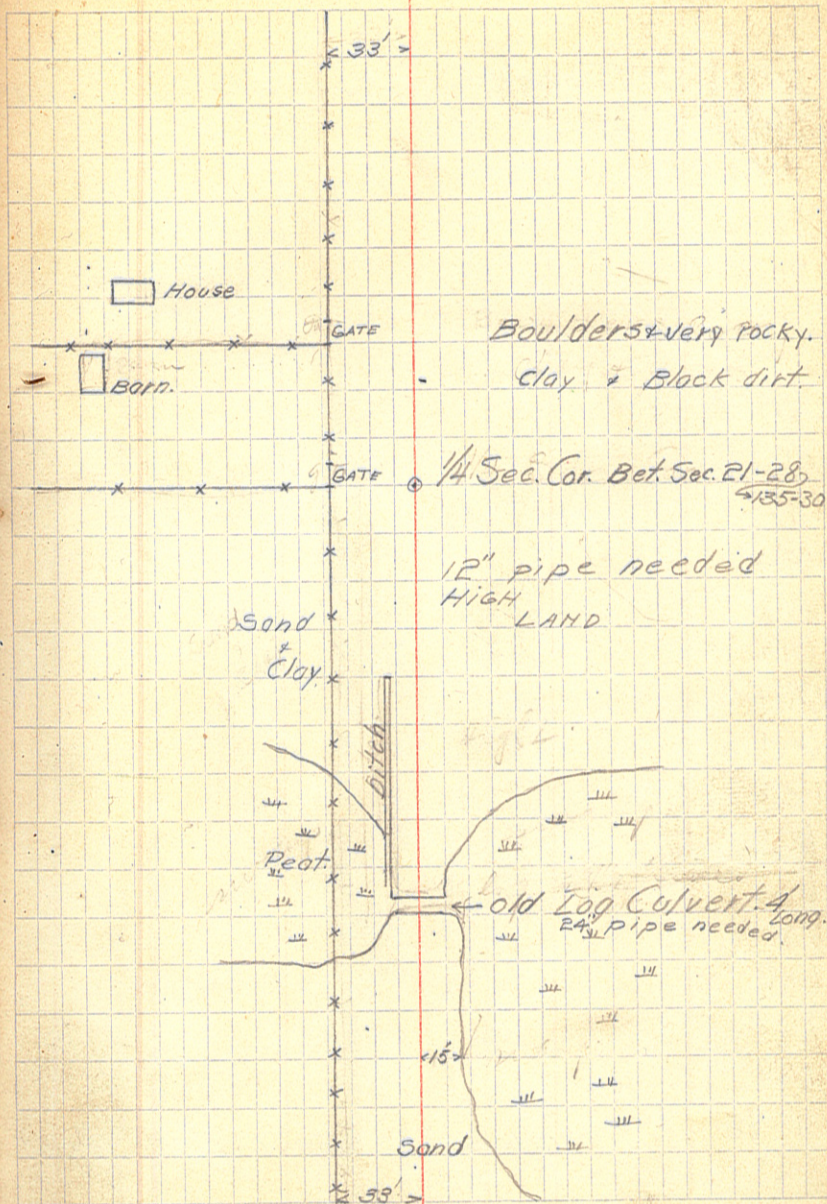
664

663

662

11/10/14

26



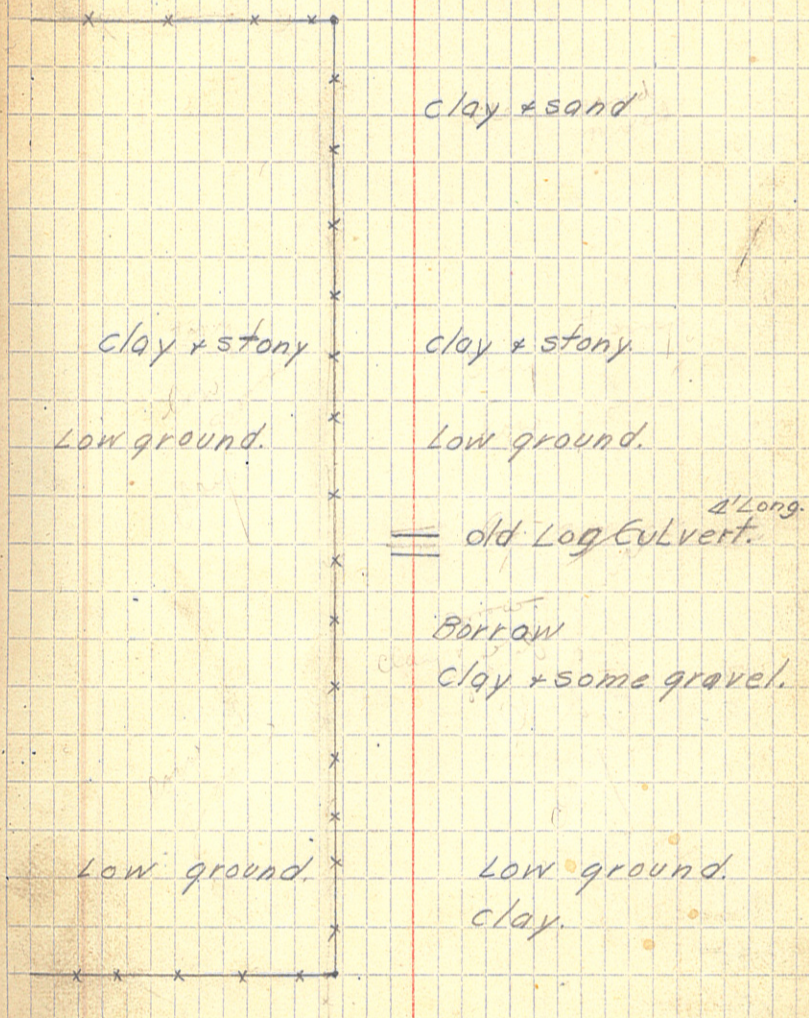
S. B. H. # 80

703  
 702  
 + 61  $\frac{3}{2}$  Sta. 701+79 18" pipe needed.  
 + 30  
 701  
 700  
 699  
 698  
 697  
 696  
 695  
 694  
 693  
 692 12" pipe needed.  
 691+95  
 691  
 690  
 689  
 688  
 687  
 686  
 685  
 684  
 + 85 Sta. 683+37 $\frac{5}{2}$  pipe in place 18"x12"  
 683

11/10/14 27

Light clearing & grubbing  
 Several large pine stumps.  
 very stony.

Sec. Cor. Secs 20-21-28-29  
 -135-30.



S. R. H. #80

+93<sup>5</sup>

⊙

P.O.T.

R.P. 33' L. R+L.  
R.P. 33' R.

727

726

725

724

723

722

721

Sta. 720+25 12" pipe needed.

720

719

718

717

Sta. 717 18" pipe needed.

716

Sta. 716 to 717 some work done.

715

714

713

712

711

710

+68

⊙

P.O.T.

R.P. 33' L. R+L.  
R.P. 33' R.

709

708

707

706

705

704

11/10/14 28

x x x x 33' 1/4 Sec. Cor. Bet. 20-21-135-30.

clay

very stony.

sand, clay + gravel

clay

Low ground.

stony

clay

clay

very stony.

S.R.H. #80

750

749

748

747

746

745

744

⊙

P.O.T.

743

742

741

740

739

738

+438

⊙

P.O.T.

R.R. 33' L. 14  
R.R. 33' R. 14.5

737

736

+68

735

734

733

Sta. 732+50 12" pipe needed.

732

731

730

729

728

11/10/14

29

Low ground

Sta. 748 to 754

clay.

Some large oak  
& pine stumps.

some large stones.  
clay + stony.

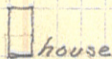


Sta. 741 + 75

12" pipe needed.

clay

stony.



Gate.



S. R. H. #80

773

772

771

770

769

768

767

766

765

764

763

762

761

760

+80

sta. 759+80 18" pipe needed.

759

758

757

756

755

+56<sup>2</sup>

⊙

sta. 754+12 12" Col. in place.

754

753

752

751

11/10/14

30

sta. 771 to 772

several large pine stumps.

sta. 769 large pine stump.

clay

stony.

Low clay ground  
from Sta. 750 to 765

Small Wooden Bridge  
very stony.

~~Sec. Line Road Graded.~~ Sec. Cor. Sec. 16-17-20-21  
1935-30



793

792

791

790

789

788

787

786

785

784

783

782

781

780

779

778

777

776

775

774

773

772

771

770

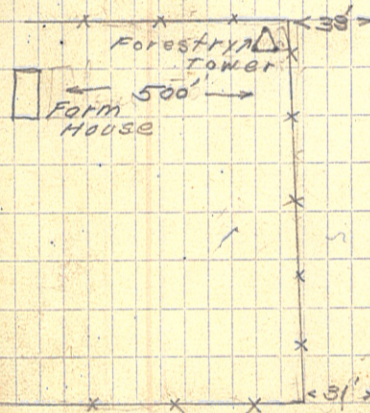
Large pine stump.

Sta. 775+35. 12" pipe needed.

11/10/14

31

= old Log Cul. 5' long

Iron Pipe @ 1/4 Sec. Cor. <sup>Bet. Sec. 16-17</sup>  
← Private Drive, <sup>135-38</sup>sand & clay  
some stones.

S. R. H. #80

816  
815  
814  
813  
812  
811  
810  
809  
808  
+14<sup>3</sup>  
807  
806  
+50  
805  
804  
803  
802  
801  
800  
799  
798  
797  
796  
795  
794

Sta. 807+14<sup>3</sup> = Sec. Cor.  
Sec. 8-9-16-17-135-30

11/10/14

32

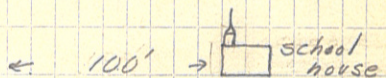
Sta. 807+14<sup>3</sup> to  
833+08<sup>3</sup> clay &  
very stony.  
Light Brushing.

Sec. Line Road

Brushed out.

Sec. Line Road.

Brushed out.



S.P.H. #80

+08<sup>2</sup>

○

833

832

831

830

829

828

827

826

825

824

823

822

821

820

819

+90

818

817

11/10/14

33

1/4 Sec. Cor. Bet. Sec. 8-9-  
↳ 135-30

24" pipe needed. — old log cul.

No Work.

Snowed Could not see  
sights

833+08<sup>e</sup> ○ 1/4 Sec. Cor. Sec. 8-9-135-30.

C. J. White.  
E. W. Bork.  
J. B. Crossman.

11/12/14.

34

S. R. H. #80

856

855

854

853

852

851

850

849

848

847

846

845

844

843

842

841

840

839

838

837

836

835

834

12" pipe needed.

○ P.O.T.

833+08<sup>2</sup> ○ 1/4 Sec Cor. bet. 829 135-30

C.D. Conzett  
C.J. White  
E.W. B. J.B.C.  
C.J. B.

11/13/14

35

Sta. 854 to Sta.

856+30 Line

runs across pot  
hole.

Pot  
hole.

⊗ old sawmill site.

Sta. 847+75 to

Sta. 851 Line

runs across  
pot hole.

Pot hole.

small rock fill.

Light brushing  
from Sta. 833+08  
to Sta. 859+47.

Sta. 834 15" pipe needed.

S R. A. #80

+66<sup>5</sup>

○

P.O.T.

Fence Cor. (on L. 877+46.  
con. R. 877+56.)

877

876

875

874

873

872

871

870

869

868

867

+15

866

+50

865

864

863

862

861

860

+47

○

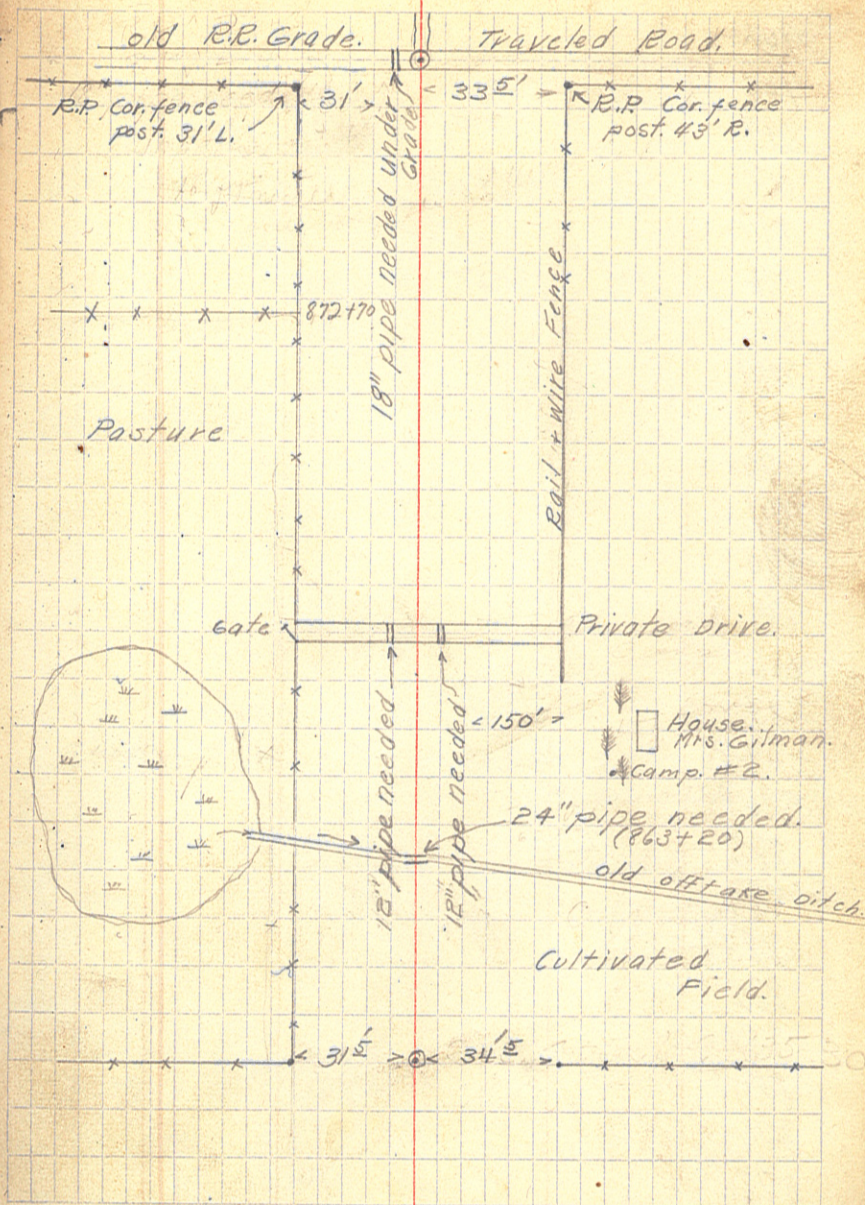
Sec. Cor. Iron pipe.  
(Sec. 4-5-8-9-35-30)

859

858

857

11-13-14 36



S R H #80

901

900

899

898

Sta. 898+50 12" pipe needed.

897

896

○ P.O.T.

895

894

893

892

891

890

889

888

887

" 12" pipe needed.

+47<sup>2</sup>

1/4 Cor. Bet. Sec. 4+5-135-30

886

885

884

883

882

881

880

879

878

11-13-14 37

old wagon Road. Traveled.

(stone Pile 100' x 4' x 2')  
on R.W.

○ Approx. 1/4 Sec. Cor.  
(Supposed to be 4' to Left)

Sta. 877+66<sup>5</sup> to  
Sta. 913+89<sup>3</sup> Light  
clearing +  
Grubbing.

S. R. H. #80

924  
923  
922  
921  
+85  
920  
919  
918  
917  
916  
915  
914  
+89<sup>3</sup>  
913  
912  
911  
910  
909  
908  
907  
906  
905  
904  
903  
902

⊙

Sec. 4 + 5 - 135 - 30 +  
32 + 33 - 136 - 30

⊙

P.O.T.

11-13-14<sup>38</sup>

Cul. in place  
20.5' x 12"

Traveled

Twp. Line Road

Brushed out

Sec. Cor. 2" Gal. Iron pipe

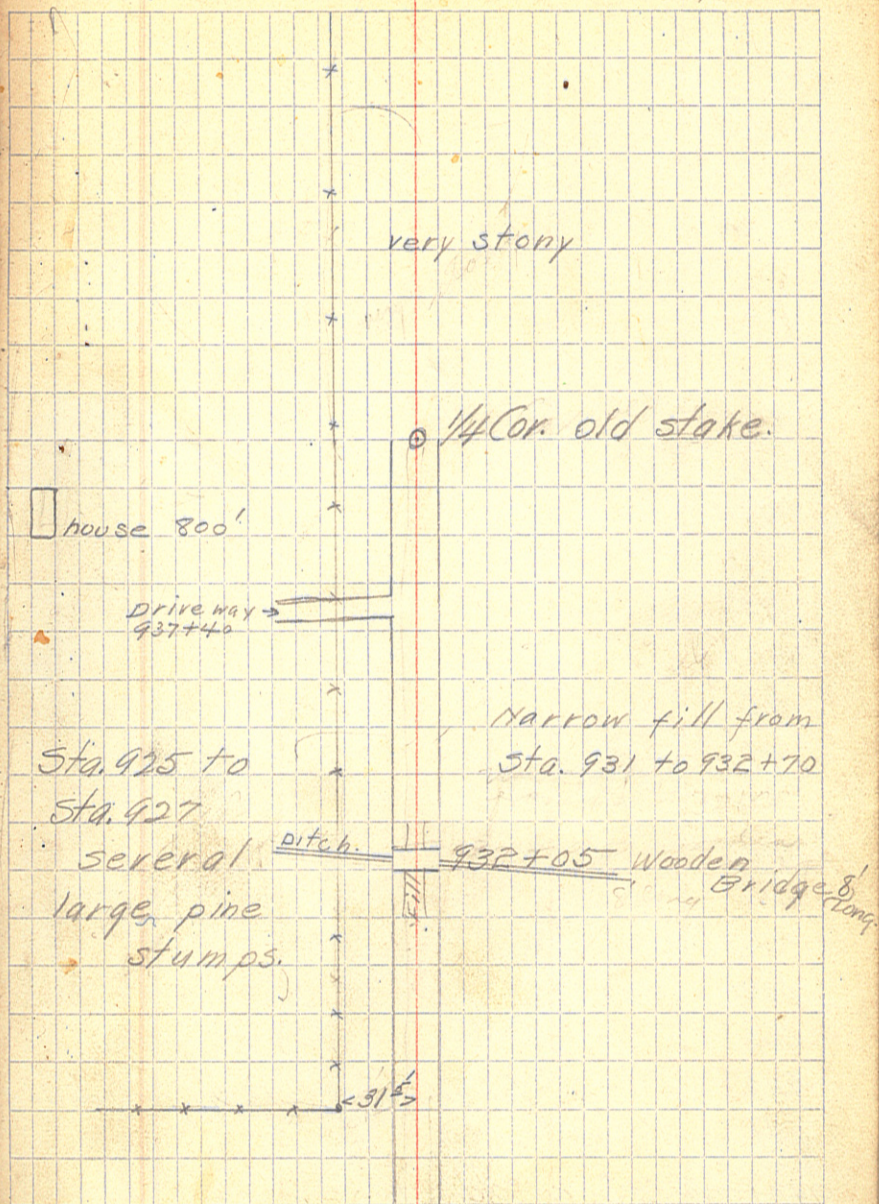
Wagon Road



S R H #80

+00.4 1/4 Cor. bet. Sec. 32+33-136-30  
940  
939  
938  
937  
936  
935  
934  
933  
932  
931 Sta. 928+50 to Sta. 931  
930 Graded road.  
929  
928  
927 P.O.T.  
926 926+96 1/4 Cor. stake.  
925

11-13-14 39



S. R. H. #80

963  
962  
961  
960  
959  
958  
957  
956  
955  
+92  
954  
953  
952  
951  
950  
949  
948  
947  
946  
945  
944  
943  
942  
941

⊙ P.O.T.

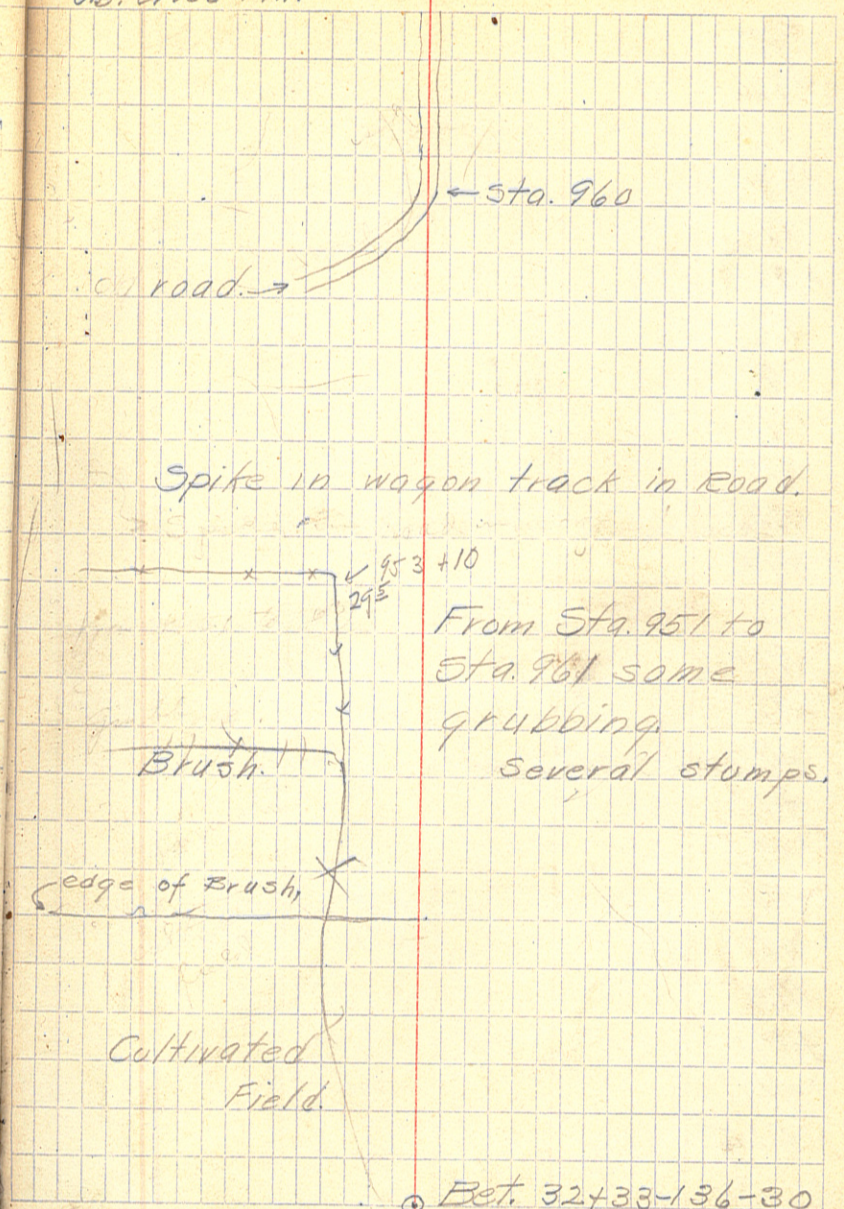
Sta. 944+30 18" pipe needed

940+004 "2 Cor. old stake.

C.D. Conzett.  
C.J. White  
C.W. Bark  
J.B. Crossman.

11/17/14.

40.



road →

← Sta. 960

Spike in wagon track in Road.

953+10  
29 1/2

From Sta. 951 to  
Sta. 961 some  
grubbing  
several stumps.

Brush

edge of Brush, X

Cultivated  
Field.

⊙ Bet. 32+33-136-30

987

986

985

984

983

+27±

⊙

P.O.T.

982

981

980

979

978

977

976

975

974

Sta. 978 to 1/4 Cor. a few

973

Sta. 972 to 978 a <sup>lot</sup> of stumps.

972

good many stumps.

971

970

969

968+35

20' x 12" pipe in place.  
(18" pipe needed)

968

967

+21±

⊙

966

965

964

11/17/14

41

Sta. 984 to 1/4 Cor.  
light brushing &  
clearing on Left.

→ Sta. 983+50

← 500'

Farm house



some Boulders.



2" Iron pipe ⊙ Sec. Cor.

Sec. 28-29-32-33-136-30

1009  
1008  
1007  
1006  
1005  
1004  
1003  
1002  
1001  
1000  
999  
998  
997  
996  
995  
+40  
994  
993  
~~+54~~  
992  
+20  
991  
990  
989  
988

15" pipe needed.

Approx. 1/4 Cor.

991+10 18" pipe needed.

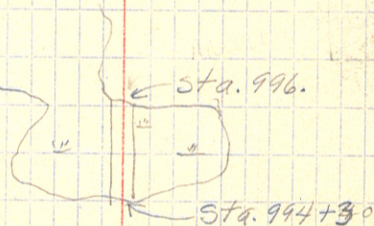
Sta. 987 to 997  
Graded road.

11/17/37

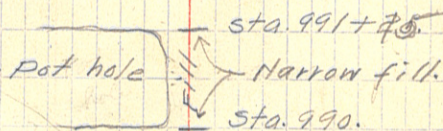
42

clay  
+  
very stony.

Narrow fill  
from 994+30  
to 996.



Bet. Seg. 28-29-136-30 Spike in road.



1031 Wooden Culvert. 5' Long.  
 1030  
 1029  
 1028  
 1027  
 1026  
 1025  
 1024

+91 Wooden Culvert. 4' Long.  
 1023  
 1022  
 1021  
 1020  
 1019

+71<sup>+</sup> Def. to East.  
 1018  
 1017  
 1016  
 1015  
 1014  
 1013  
 1012

+91 Wooden Culvert. 4' Long.  
 1011  
 1010

24" pipe needed. =

Sta. 1028 to 1038 some work done, light grading + fill.

24" pipe needed.

Sec. Cor.                      2" Iron pipe.  
 Sec. 20-21-28-29-36-30

Fairly Low ground.

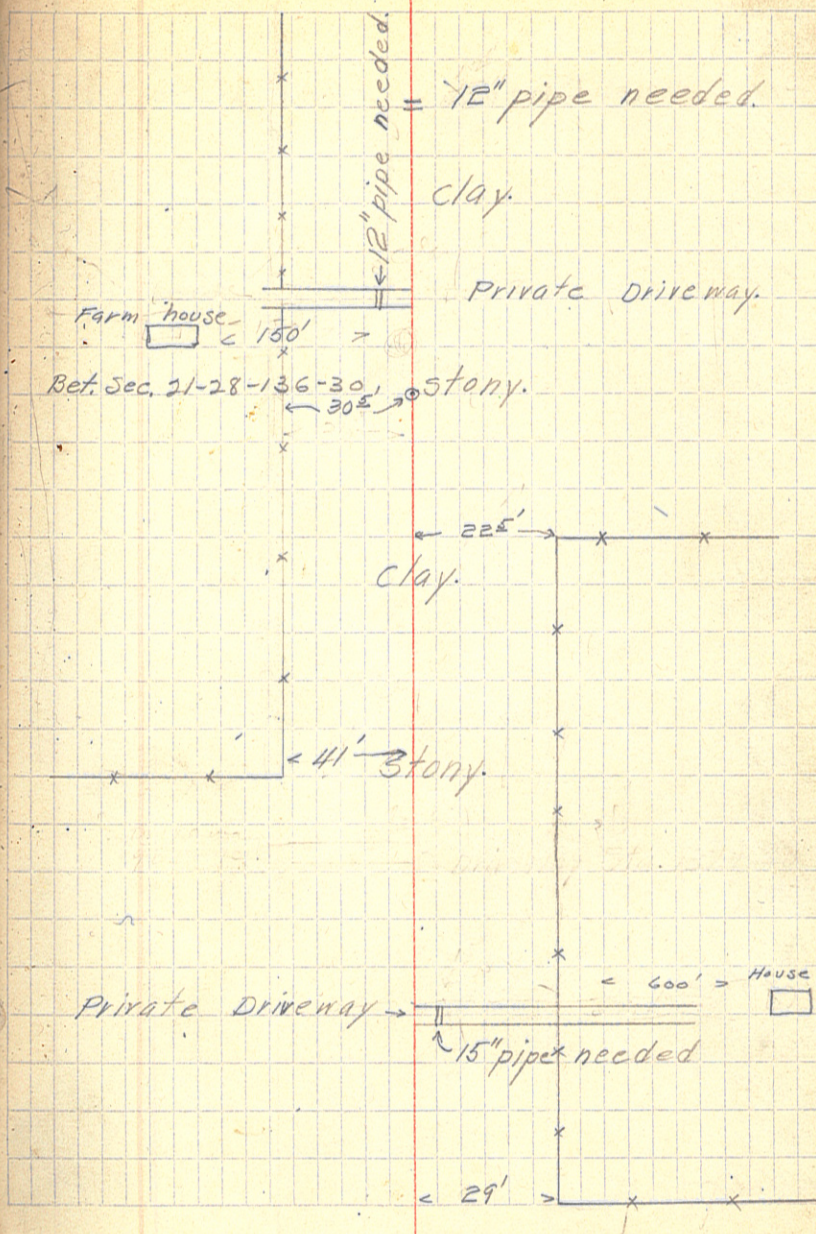
18" pipe needed.

clay + stony.

1049  
 +11 Wooden Cul. 4' long.  
 1048  
 1047  
 1046  
 +57  
 1045  
 +66 ⓪ 1/4 Cor. "stone knocked out  
 (spite in ground)  
 1044  
 1043  
 +45  
 1042  
 1041  
 1040  
 1039  
 +68  
 1038  
 1037  
 1036  
 1035  
 +29  
 1034  
 1033  
 1032  
 +700

11/17/37

49



+62    ⓪ Sec. Cor. 21-22-27-28-36-30.  
 1070  
 1069  
 1068  
 1067    Sta. 1066+18 wooden Cul. 7'x16'  
 1066    (30" pipe needed)  
 1065  
 1064  
 1063  
 1062  
 1061  
 1060  
 1059  
 +07    24" pipe needed.  
 1058  
 1057  
 1056  
 1055  
 1054  
 +17<sup>±</sup>.    ⓪ P.O.T.  
 1053  
 1052  
 1051  
 1050

x    Sec. Cor. stone.  
 x    Private Drive way.    House  
 x    34' - 600'    12" pipe needed.  
 x    Sta. 1064+30 to 1068+80  
 x    side ditches re-  
 x    quired.  
 x    Sta. 1064+30 to 1068  
 x    narrow fill.  
 x    From 1/4 Cor. to Sta.  
 x    Sta. 1055 to 1064    1056+50 Light Brushing.  
 x    +30 Graded, & fill.  
 x    = Wooden Cul. 16'x6"  
 x    clay & stony.  
 x    Spike in ground.  
 x    1/4 Cor. to Sta. 1053  
 x    Light Brushing.

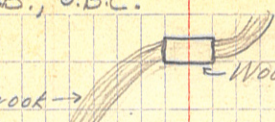
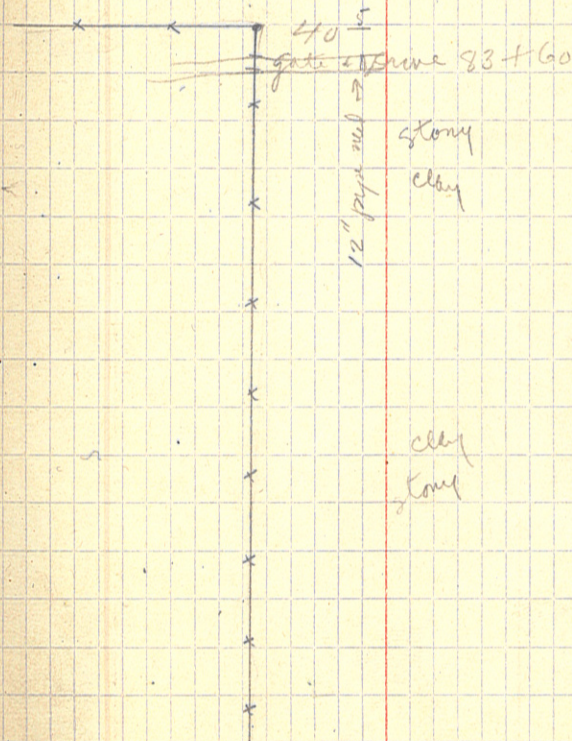
+10      END OF BRIDGE.  
 1091  
 1090  
 1089  
 1088  
 1087  
 1086  
 1085  
 1084  
 +95  
 1083  
 1082  
 +66  $\frac{1}{2}$       ⊙ Spike in road.  
 1081  
 1080  
 1079  
 1078  
 1077  
 1076  
 1075  
 1074  
 1073  
 1072  
 1071  
 1070+62      ⊙ Sec. Cor. 21-22-27-28-136-30

C.D. Conzett  
 C.J. White  
 E.W. B., C.J.B., J.B.C.

11/18/14

46

Bridge is 47' Long.  
 - Wooden Bridge  
 stony brook →



C.D.C. C.J.B.  
C.W. J.B.C.  
E.W.B.

11/18/14

47

+54<sup>2</sup> (O) Spike in ground.

1105

1104

1103

1102

1101

1100

1099

1098

1097

1096

1095

1094

1093

1092

(Cultivated Field)

Sta. 1102+50 12" pipe needed.

Sta. 1095 to 1098 Creek Bottom  
+ Brush.  
(Meadow.)

Sta 1097+75 18" pipe needed.

(Meadow)

1127  
 1126  
 1125 Sta. 1128+00 to 1143+59  
 1124 Light brush on outside  
 +59<sup>2</sup> of road.  
 (Sec. 22-23-27-28-136-30.)  
 1123  
 1122  
 1121  
 1120  
 1119  
 1118  
 +99. Wooden Bridge 14' x 16'  
 1117  
 1116  
 1115  
 1114  
 1113  
 1112  
 1111  
 1110  
 1109.  
 1108  
 1107  
 1106  
 1105+54<sup>2</sup>

11/19/34 48  
 Graded road  
 to ward East from Sec. Cor. <sup>going toward</sup> Reguot.  
 (Plowed Field)  
 Line Def. to North.

(Meadow)  
 stream 2' wide.  
 36" pipe needed → small  
 To be used as  
 an off-take to stony  
 (Plowed Ground) <sup>Break</sup> 300' R.  
 Sta. 114+50  
 Private drive.  
 12" pipe needed  
 Sta. 112+70 12" cut needed.  
 Sta. 1109 to 1114  
 swamp & narrow fill.

~~Side ditches  
 required from  
 Sta. 111+50 1113+50~~

1150  
 1149  
 1148  
 1147  
 1146  
 1145  
 1144  
 +59 Old Angle Post (A.P.) R<sup>h</sup> L.  
 +492 ⊙  
 1143  
 1142  
 1141  
 1140  
 1139  
 1138  
 1137  
 1136  
 1135  
 1134  
 1133  
 1132  
 ↘ 1131  
 1130  
 1129  
 1128

11/19/14

49

Side Ditches  
to end at Sta. 1159.

Side Ditches  
to start at Sta. 1145.

18" pipe needed.

Present road

From A.P. to Sta. 1159 = Swamp + Brush + old  
Require side Ditches. Tam. Snags

Brushing on L. from  
Sta. 1142 to A.P.

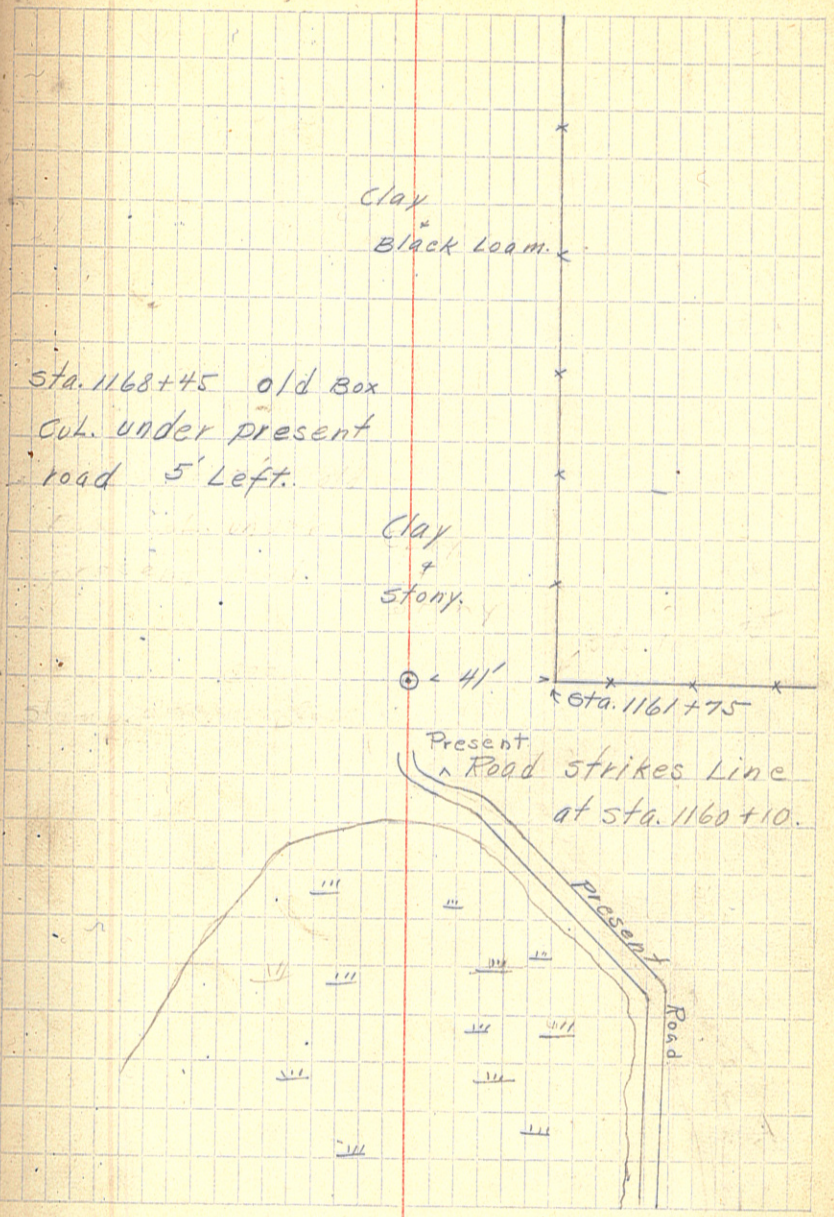
clay sand.

Sta. 1129+50 15" pipe needed.

1175  
 1174  
 1173  
 1172  
 1171  
 1170  
 1169  
 1168  
 1167  
 1166  
 1165  
 1164  
 1163  
 1162  
 1161  
 1160  
 1159  
 1158  
 1157  
 1156  
 1155  
 1154  
 1153  
 1152  
 1151

12" pipe needed.

(O) P.O.T.  
 1160+75<sup>old</sup> A.P.4. in Large Pine  
 stump 4R.

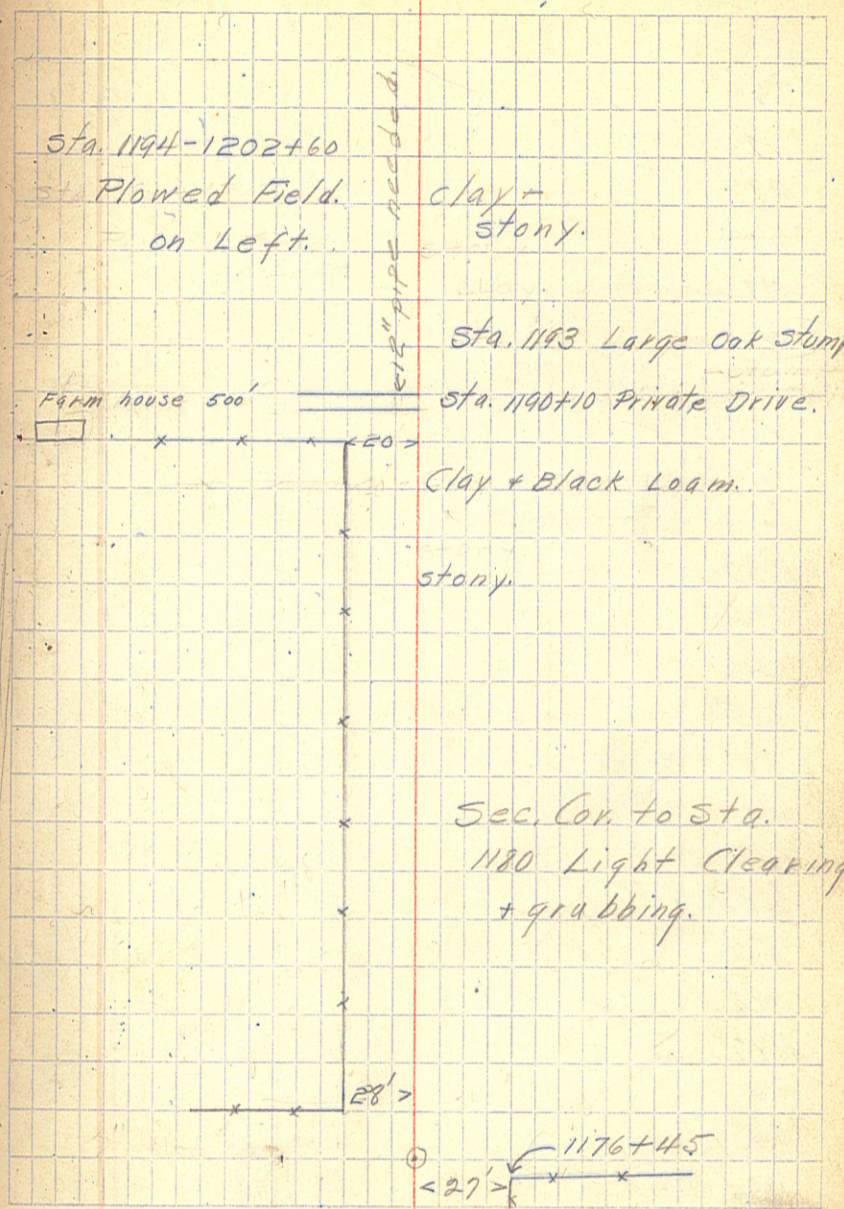


1199  
 1198  
 1197  
 1186  
 1195  
 1194  
 1193  
 1192  
 1191  
 1190  
 1189  
 1188  
 1187  
 1186  
 1185  
 1184  
 1183  
 1182  
 1181  
 1180  
 1179  
 1178  
 1177  
 +95  
 +58  
 1176

Sta. 1183+50. 12" pipe needed.

Sec. Cor. 2" Iron pipe.  
 (Sec. 14-15-22-23-26-30)

11/19/14 51



12" pipe needed.

+528    ⓪    Spike in ground.

1220

1219

1218

+43

1217

1216

1215

1214

1213

1212

1211

1210

1209

18" pipe needed.

1208

1207

1206

1205

1204

1203

+70<sup>+</sup>

1/4 Cor. 2" Iron pipe.  
Bet. sec. 14-15-36-30.

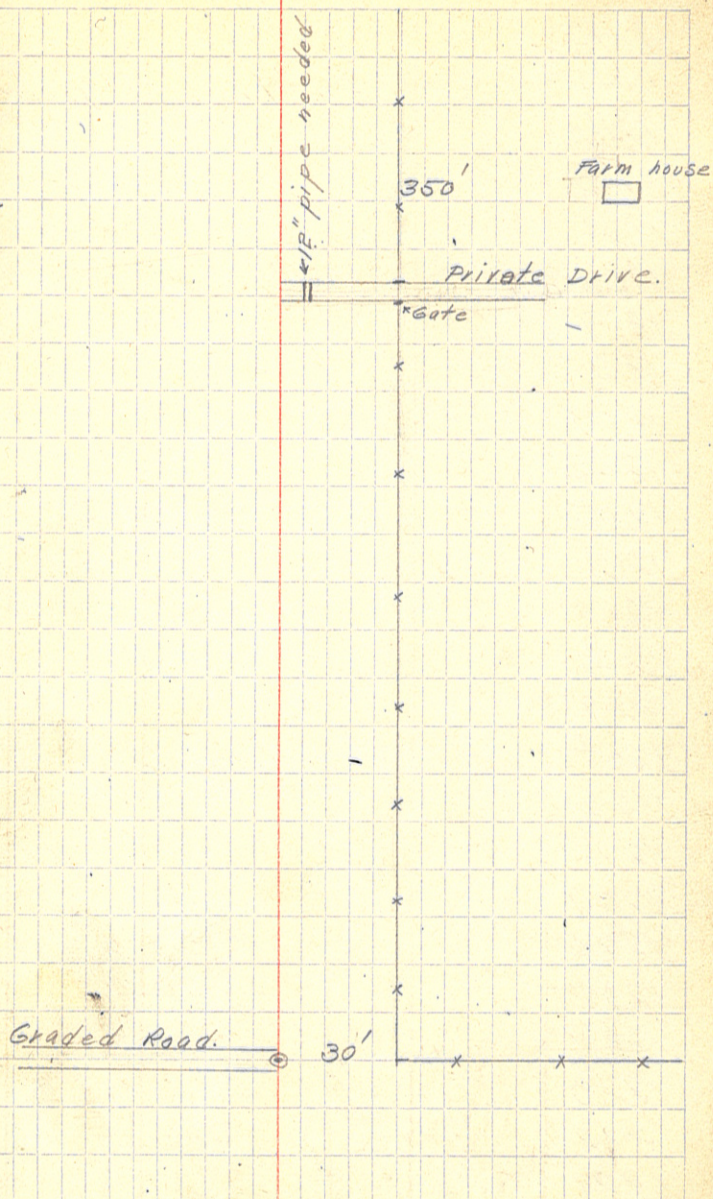
1202

1201

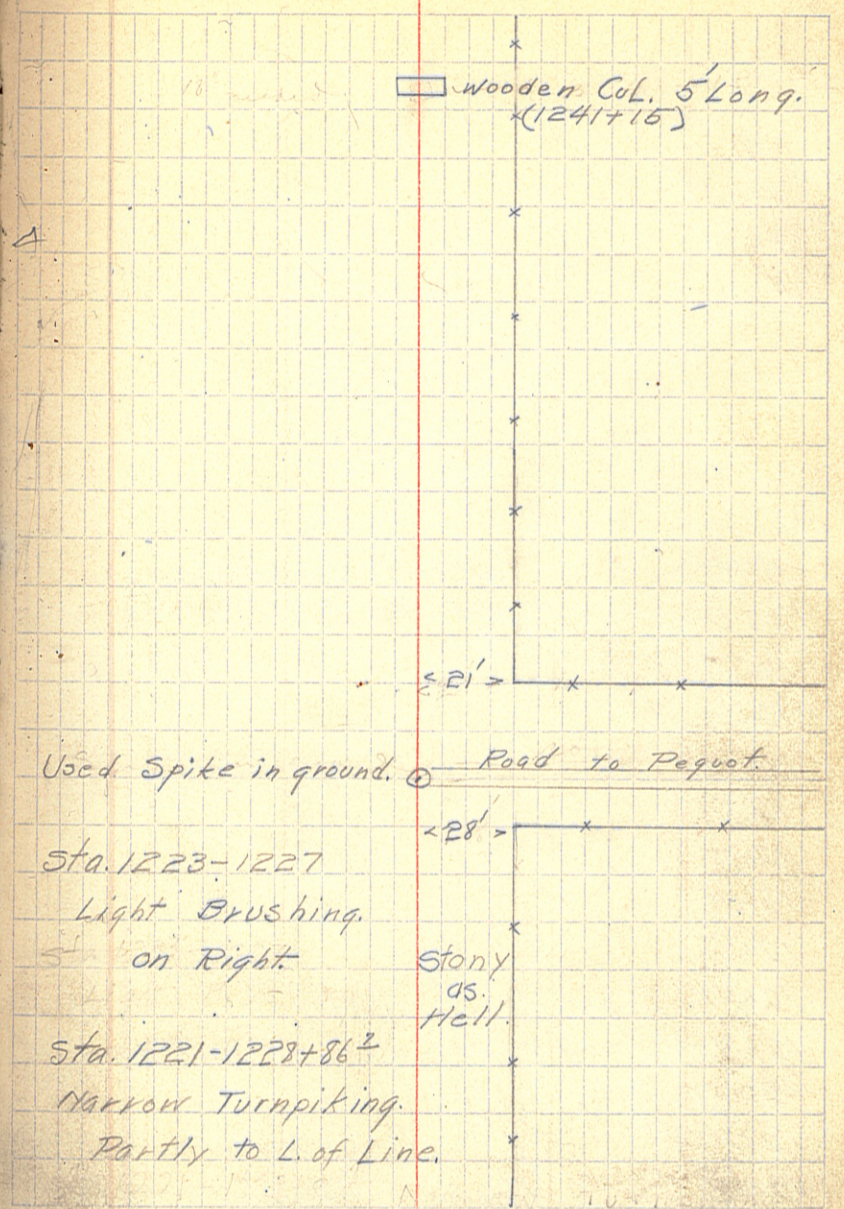
1200

11/19/14

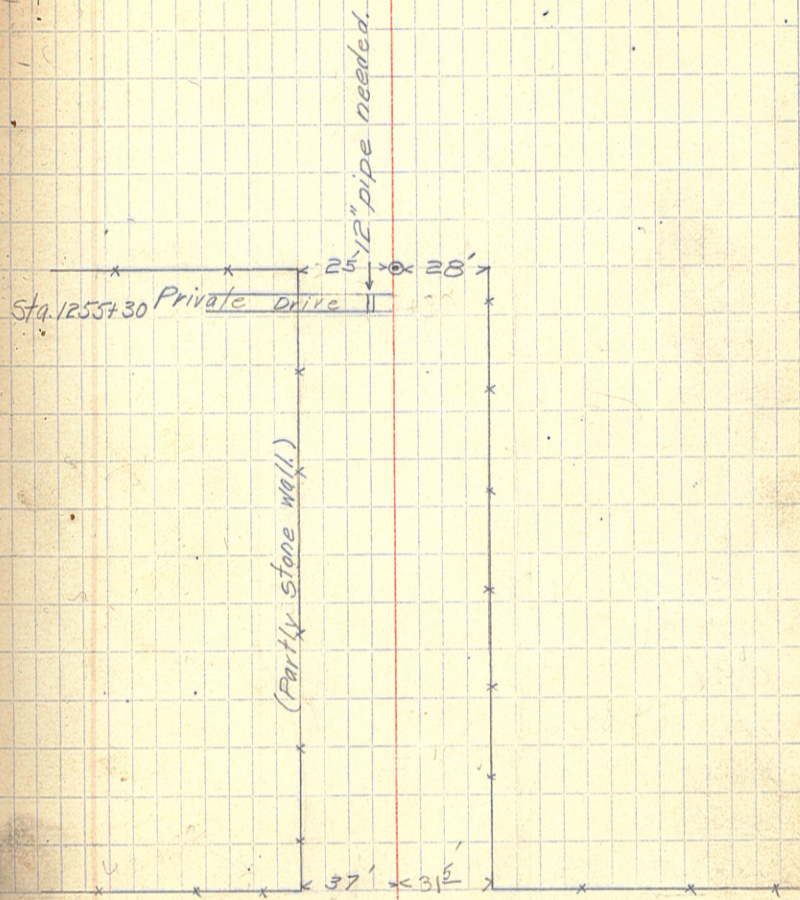
52



1242  
 1241 Sta. 1241+15 18" pipe  
 1240 needed.  
 1239  
 1238  
 1237 Sta. 1236+50 18" pipe needed  
 1236  
 1235  
 1234  
 1233  
 1232 Sta. 1232-40 Light Brush-  
 1231 ing on L.  
 1230 Sta. 1232-41+50 Low ground.  
 +22 rather swampy.  
 1229  
 +86<sup>2</sup> (C) Approx. Sec. Cor.  
 +60 (Sec. 10-11-14-15-136-30)  
 1228  
 1227  
 1226  
 1225  
 1224  
 1223  
 1222  
 1221



+44<sup>e</sup>      ○      1/4 Cor. Iron pipe.  
 1255      (Bet. Sec. 10-11-136-3a)  
 1254  
 1253  
 1252  
 1251  
 1250  
 1249  
 1248  
 1247      Sta. 1247 Large Pine Stump.  
 1246      Sta. 1245+30 12" pipe needed.  
 1245      Sta. 1244 Large boulder.  
 1244      Sta. 1243+60 Large pine stump  
 1243      Fences begin at 1242+32.



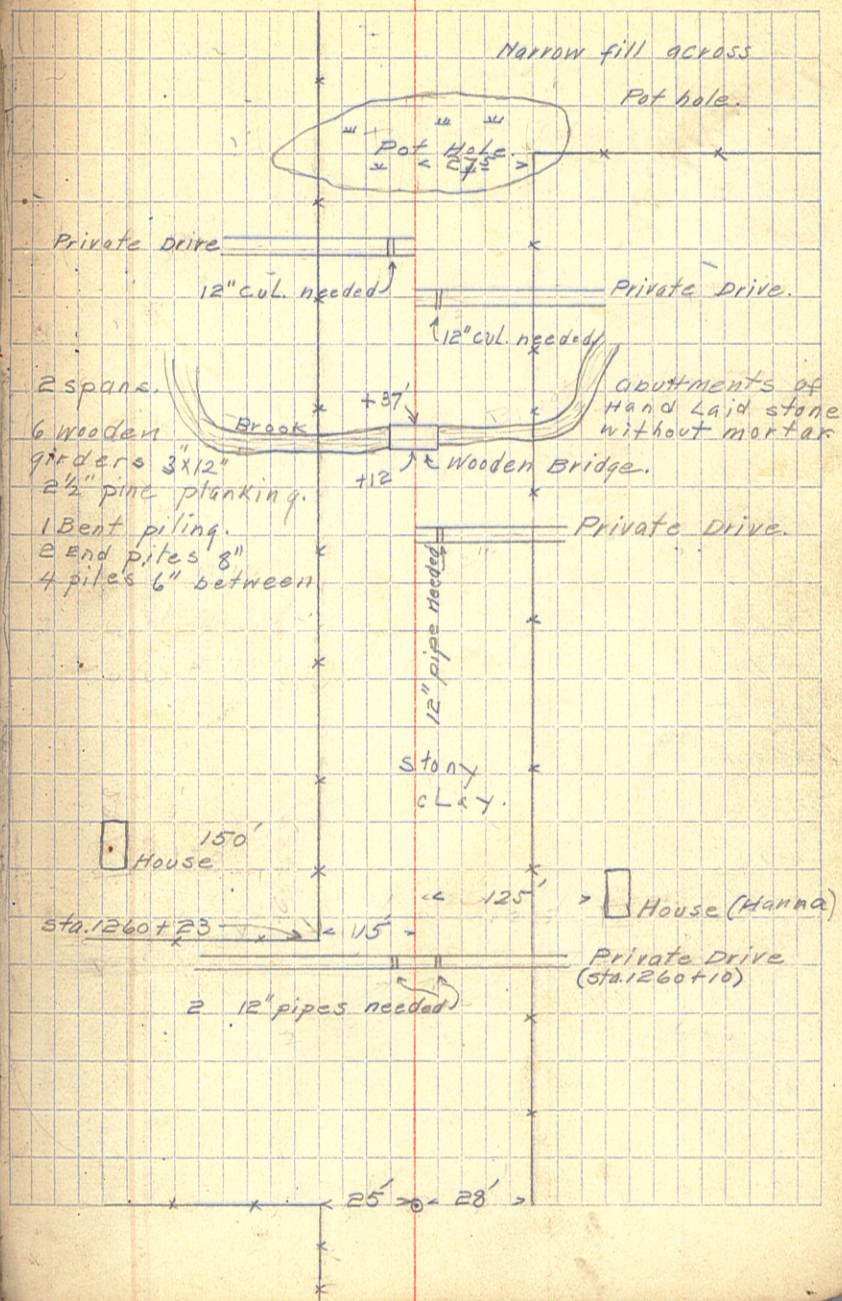


1276  
 1275  
 1274  
 +75  
 1273 Very stony, Sand + gravel.  
 1272  
 +75  
 1271  
 1270  
 +26 \* Centre.  
 1269 Sta. 1269-1272 Creek Bottoms.  
 +80  
 1268  
 1267  
 1266 Sta. 1266-1276 Light brushing,  
 1265  
 1264  
 1263  
 1262  
 1261  
 1260  
 1259  
 1258  
 1257 Sta. 1257 12" pipe needed.  
 1256  
 1255+44  $\odot$   $\frac{1}{4}$  Cor.

C.D.C. C.J.B.  
 C.J.W. J.B.C.  
 E.W.B.

11/21/14

55



1298  
1297  
1296  
1295  
+20  
1294  
1293  
1292  
1291  
1290  
1289  
1288  
1287  
1286  
+79.5 0  
1285  
1284  
1283  
+15  
+01.0 ①  
1282  
1281  
1280  
1279  
1278  
1277

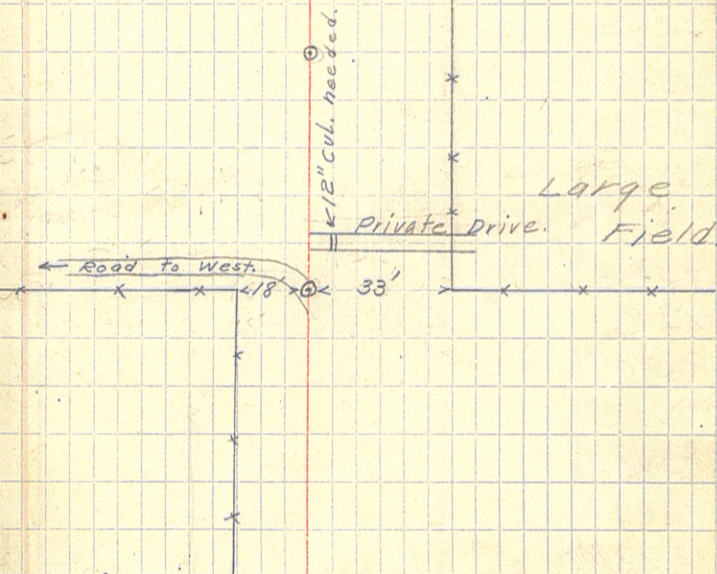
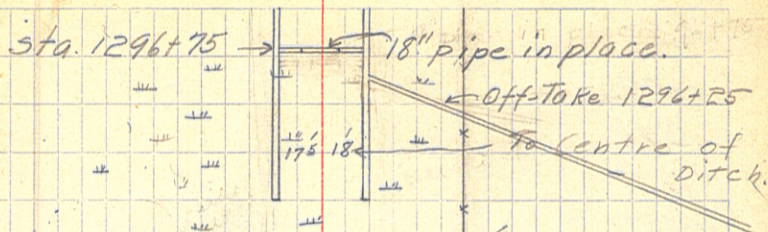
Sta. 1294+23 - 1302+50 side  
ditches. 4' wide.

Sta. 1294-1302+50 Swamp.

Sec. Con. 2" Iron pipe.  
(Sec. 2-3-10-11-136230)  
Sta. 1282-1293 Rough Turnpiking.

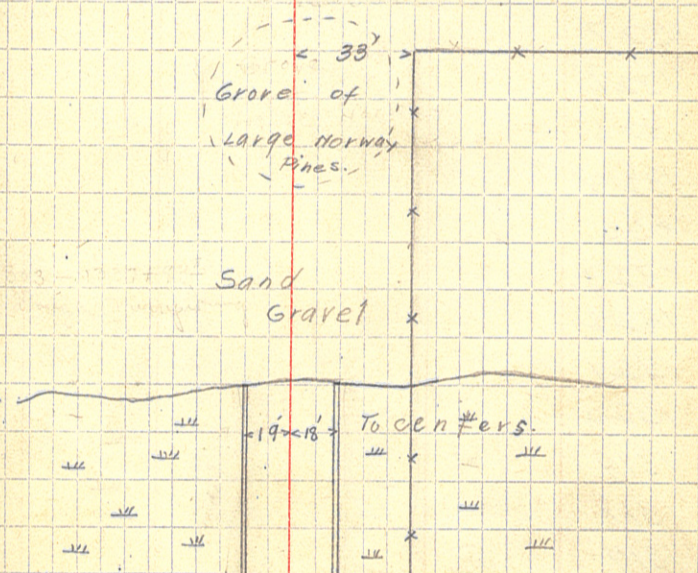
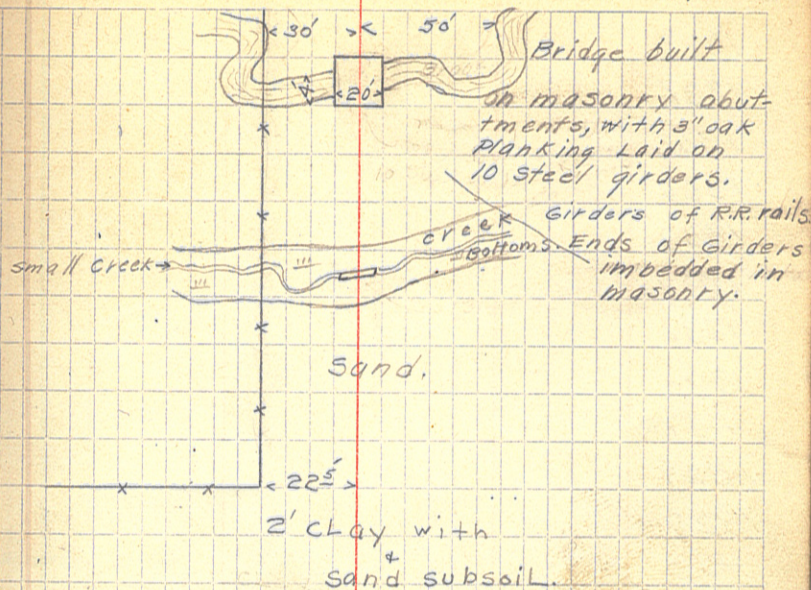
11/21/14

56



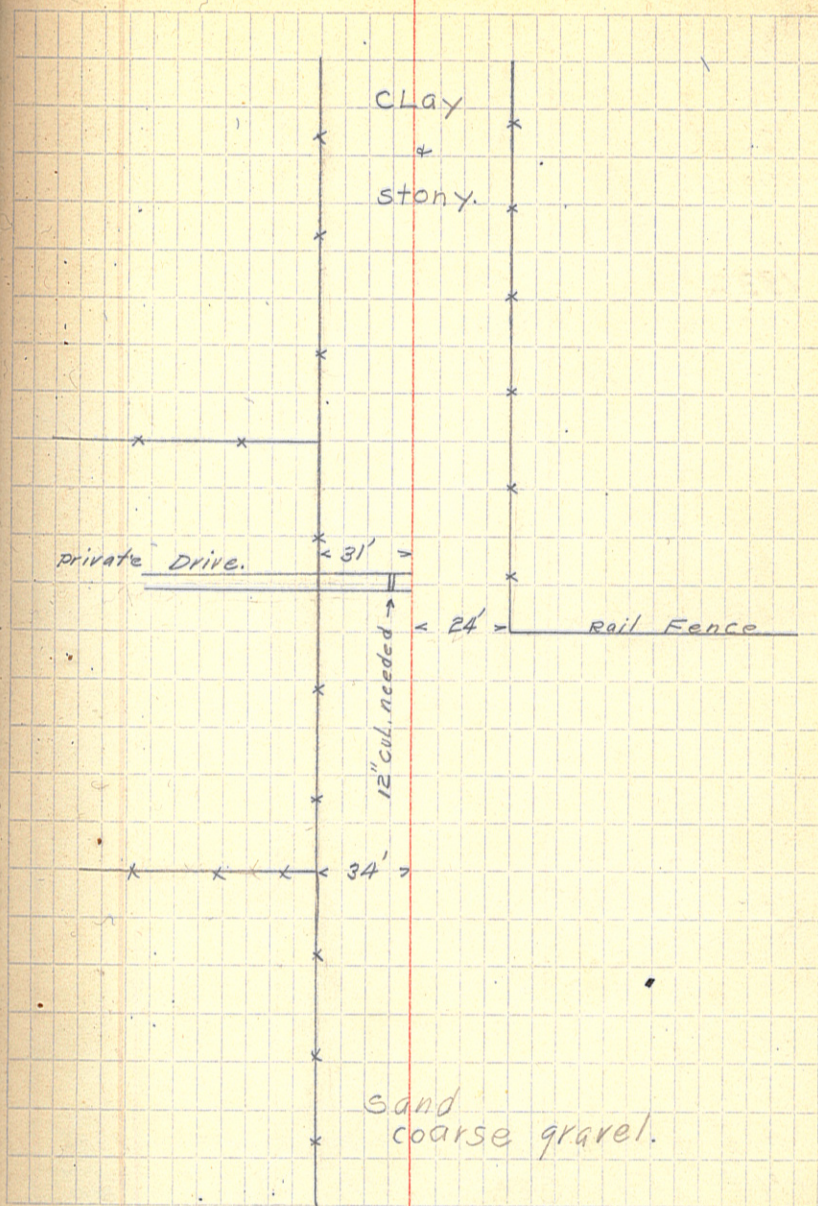
- +68  
 +59  
 1316  
 1315  
 +75 Sta. 1314+15-1314+75 Creek Bottoms.  
 +15 Sta. 1314+45 pipe in place.  
 (28' x 18")  
 1314  
 1313  
 1312  
 +10  
 1311  
 1310  
 1309  
 +32<sup>2</sup> ⓪ 1/4 Cor. 2" Iron pipe  
 (Bet. Sec. 2-3-136-30)  
 1308  
 1307  
 1306  
 1305  
 1304  
 1303 Sta. 1303-1337+16<sup>2</sup> Rough  
 Turnpiking.  
 +50  
 1302  
 1301 Fill across swamp  
 1300 composed only of  
 1299 dirt from ditches.

11/21/14 57



\*  
 1337  
 1336  
 1335  
 1334  
 1333  
 1332  
 1331  
 1330  
 +50  
 1329  
 1328  
 +20  
 +13  
 1327  
 1326  
 1325  
 1324  
 +50  
 1323  
 1322  
 1321  
 1320  
 1319  
 1318  
 1317

11/21/14 58.



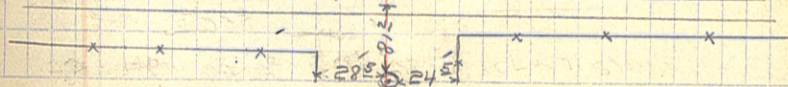
+16<sup>8</sup>

NE Cor. Sec. 3, N.W. Cor. Sec. 2-136-30

⊙ Sec. Cor. 2" Iron pipe. on Twp. Line.

Twp Line = Correction Line.

E+W Road supposed to be on Twp. Line.



7  
24  
—  
5

16  
22  
63

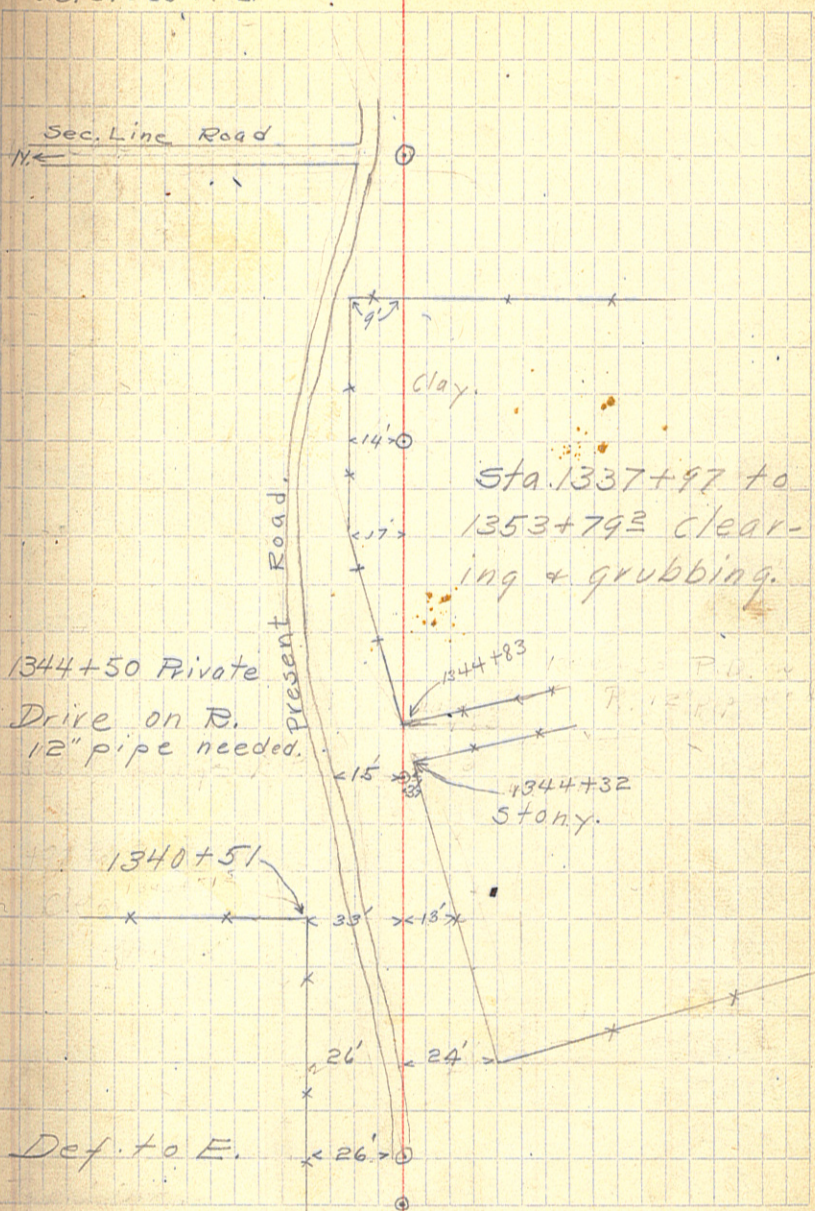
11/21/14 59

+79 <sup>2</sup>	⊙	Sec. Cor. Concrete Mon.
1353		(SE. of Sec. 35, S.W. of Sec. 36)
1352		137-38
+27		
1351		
1350		
+15 <sup>2</sup>	⊙	P.O.T.
1349		
1348		
1347		
1346		
1345		
1344		
+85 <sup>2</sup>	⊙	Mark on stone - 3' L. of Large, → N. pine.
1343		
1342		
1341		
1340		
1339		
+24		
1338		1337+85 12" pipe needed.
+97	⊙	Spike in road.
1337+16 <sup>2</sup>	⊙	Sec. Cor.

C.J. White  
E.W. Bark.  
C.J. Bark.  
J.B. Crossman.

11/27/14 P.M.

60



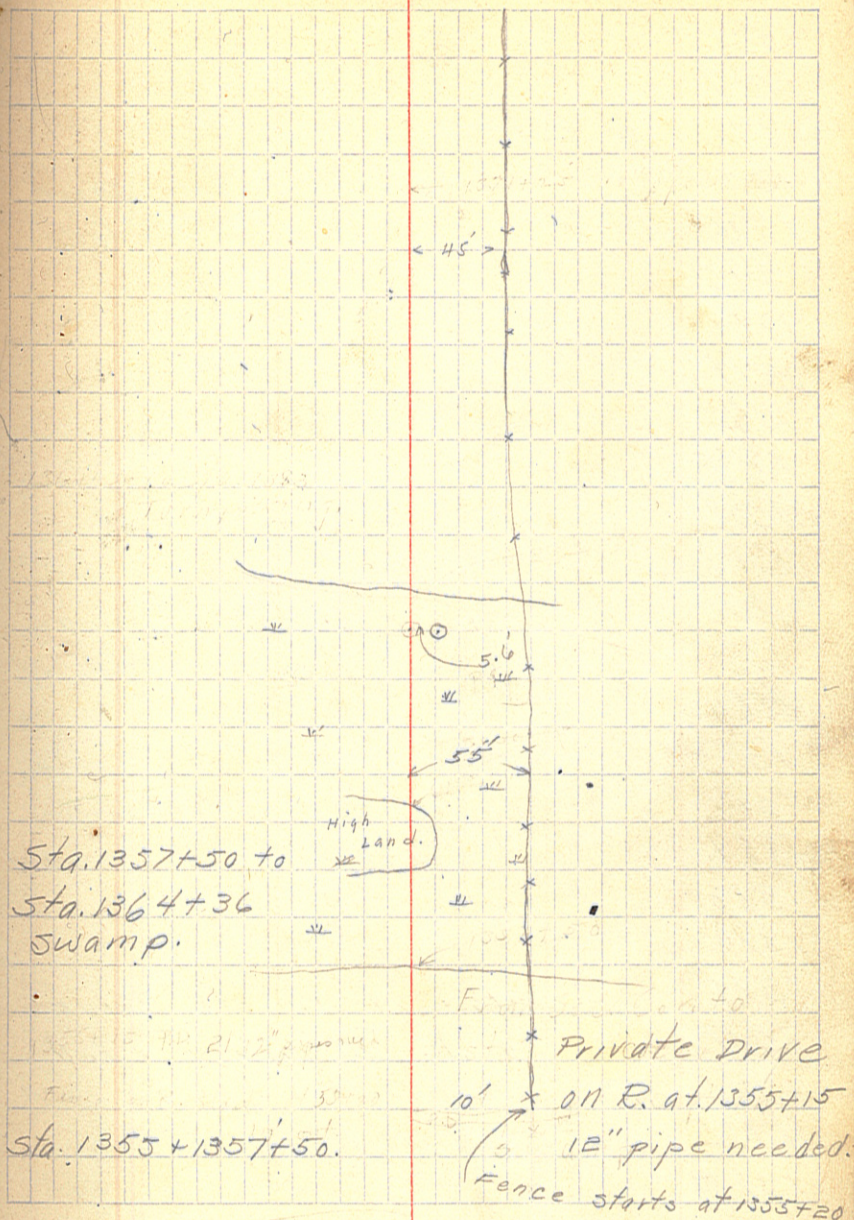
1374  
 1373  
 1372  
 1371 Sta. 1371+25  
 1370 12" pipe needed.  
 1369  
 1368  
 1367  
 +60 P.O.T.  
 1366 Sta. 1364+36 to Sta. 1383  
 1365 Turn piking.  
 +36  
 +135 1/6 Cor. stake. 5.6' R. of Line.  
 1364  
 1363  
 1362  
 1361 Point of high Land between  
 1360 Sta. 1360 + 1361 + 50.  
 1359  
 1358 Sta. 1353+79<sup>Light + Med.</sup> to Sta.  
 1357 1406+04<sup>Light + Med.</sup> clearing +  
 1356 Grubbing, except in Swamp.  
 1355  
 1354 Very low ground between  
 1353+79<sup>Seci. Cor.</sup>

C.J.W. C.J.B.  
E.W.B. J.B.C.

11/28/14.

61

3707.9

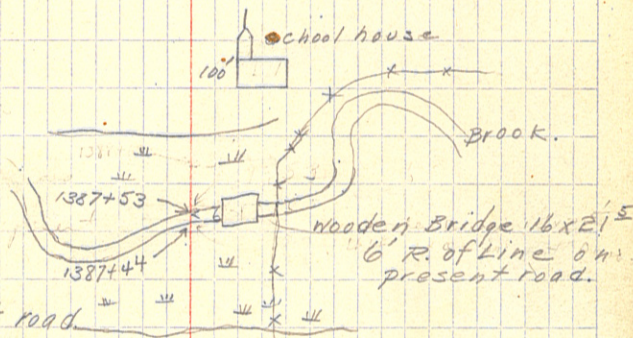
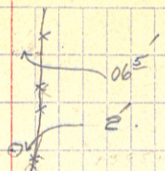


1398  
 1397  
 1396 ⊙ P.O.T.  
 1395 Sta. 1395+75 Private Drive  
 1394 on L. 12" pipe needed.  
 1393  
 1392  
 1391  
 1390  
 1389  
 1388 Fence Turns To R. at  
 1387 Sta. 1388+10, 38' out.  
 1386 Narrow fill across swamp  
 1385 Swamp from 1385-1389.  
 1384  
 1383 Sta. 1383+70 Private Drive  
 1382 on R. 12" pipe needed.  
 1381 Sta. 1381 12" pipe needed.  
 1380  
 1379  
 1378 Sta. 1378 Private Drive  
 1377 on R. 12" pipe needed.  
 1376 ⊙ P.O.T.  
 +158 ⊙ old ⊙ 1/2 of Line.  
 1375

11/28/14

62

House  
 250'  
 (J. Meyers.)

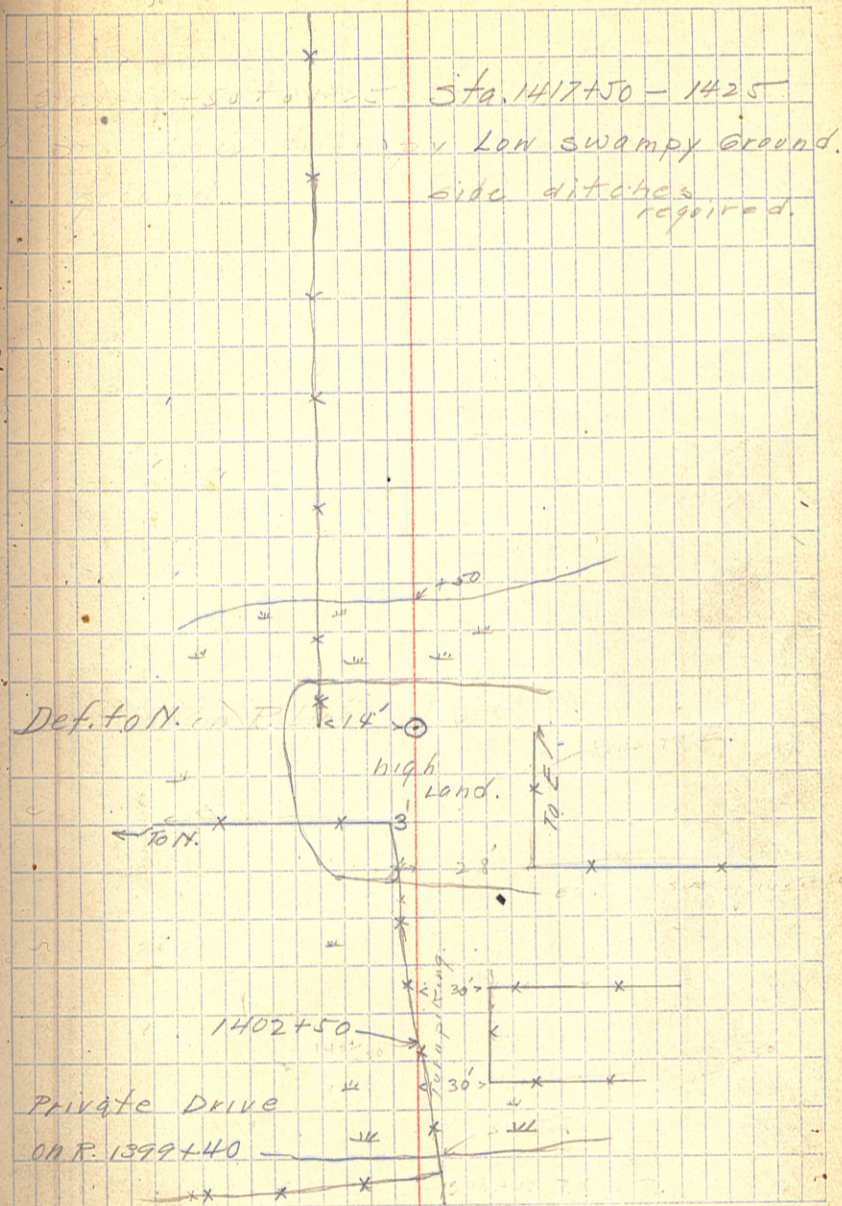




1419  
 1418  
 1417 Sta. 1406+04<sup>2</sup> - 1459+18  
 1416 light grubbing.  
 1415  
 1414  
 1413  
 1412  
 +24<sup>2</sup> ○ P.O.T.  
 1411  
 1410  
 1409  
 1408 Sta. 1407+50 18" pipe needed.  
 1407  
 +011<sup>2</sup> ○ Sec. Cor. Concrete Min.  
 1406 (SE. of Sec. 96-137-30 + SW. of  
 +90 sec. 31-137-29.)  
 +85  
 1405 Swamp ends at 1405+50.  
 1404  
 1403  
 1402 Sta. 1402 24" pipe needed.  
 14101  
 -1400 Swamp starts at  
 -1399 1400+50

CW CJB  
 EWB JBC  
 S.

11/28/14 63



CJW CJB  
EWB JBC

11/28/74

64

1428, 702 ①

1427

1426

1425

1424

1423

1422

1421

1420

\*

\*

\*

1450  
 1449  
 1448  
 1447  
 1446  
 1445  
 1444  
 1443  
 1442  
 1441  
 1440  
 1439  
 1438  
 1437  
 1436  
 1435  
 1434  
 1433  
 +62  
 1432  
 1431  
 1430  
 1429  
 1428  
 1427+70<sup>2</sup>

○

P.O.T.

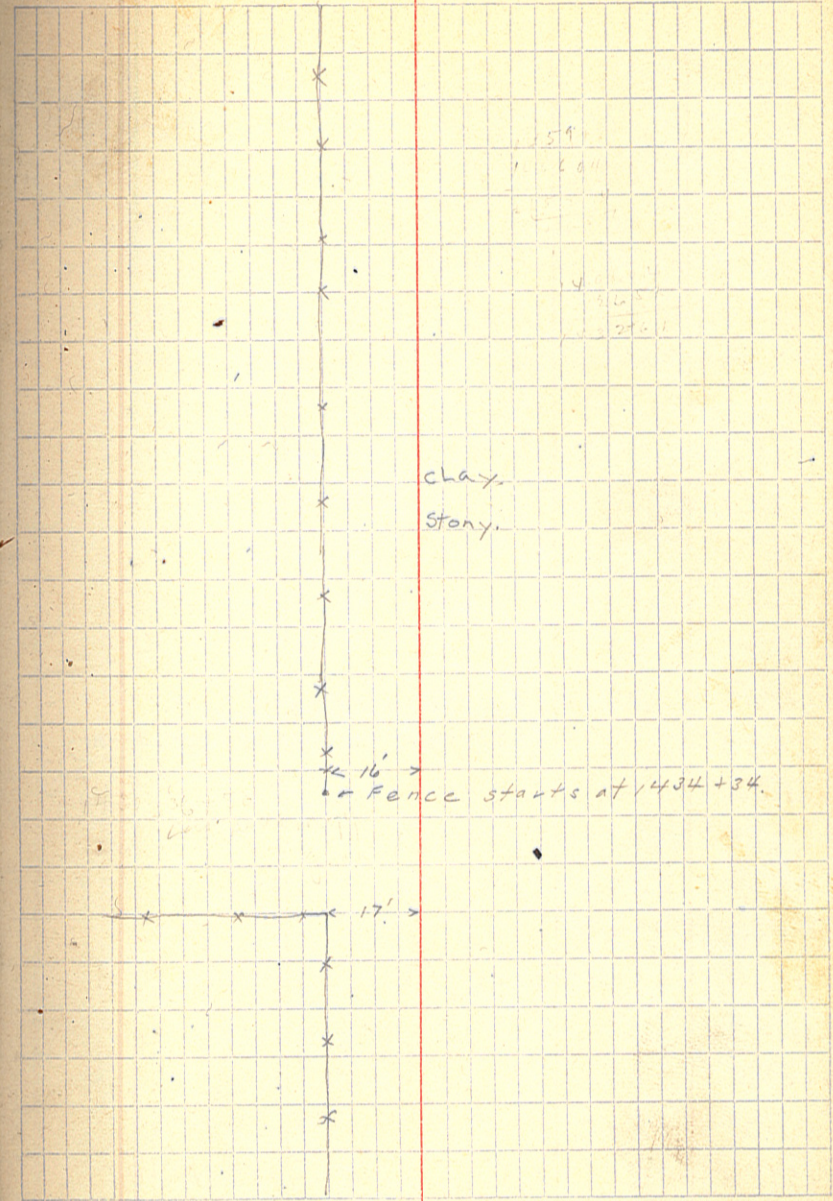
Sta. 1430-1436+50  
 Low swampy ground.  
 Side ditches required.  
 Sta. 1425-1430 Clay + Stony

○

11/30/14 P.M.

CDC C.J.B.  
 CUW V.B.C.  
 EWB

65



11/30/14 P.M. 66

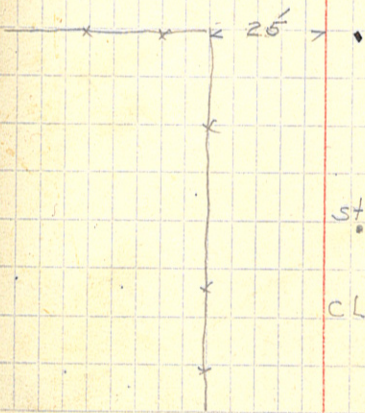
118.6  
1459  
+ 90  
1458  
1457  
1456  
1455  
1454  
1453  
1452  
1451

⊙

Sec. Cor. (Con. Mon.)  
(Sec. 25-36-137-30 + Sec. 30-31)  
→ 137-29.

12" pipe needed.

Graded Road To Jenkins →



stony

clay

1482  
 1481  
 1480  
 1479  
 1478  
 1477  
 1476  
 1475  
 1474  
 1473  
 1472  
 1471  
 1470  
 1469  
 1468  
 1467  
 1466  
 1465  
 +22'    ⓪    P.O.T.  
 1464  
 1463  
 1462  
 1461  
 1460  
 1459+18    ⓪    Sec. Cor.

Sta. 1473-1481+60 Swamp  
require side ditches.

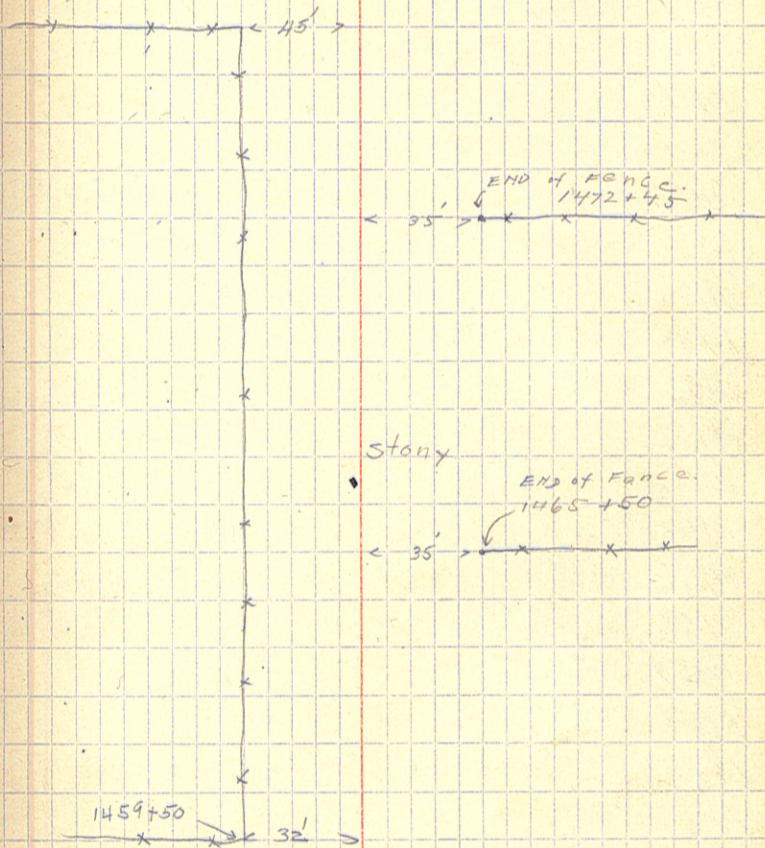
1459+18 - 1512+20 Light  
grubbing.

12/1/14,

S.

C.J.W. C.W.B.  
E.W.B. J.B.C. 67

Stony



Stony

1506  
 1505  
 1504  
 1503  
 1502  
 766<sup>15</sup>  
 1501  
 1500  
 1499  
 1498  
 1497  
 1496  
 1495  
 1494  
 1493  
 1492  
 1491  
 1490  
 1489  
 1488  
 1487  
 1486  
 1485  
 1484  
 1483

⊙

P.O.T.

1499+50 18" pipe needed.

1485+75 18" pipe needed.

Boulders.

Very stony

Boulders.

stony  
clay.

stony  
clay.

stony.

12/1/14 69

1529

+04<sup>3</sup>

⊙ P.O.T.

1528

1527

1526

1525

1524

1523

1522

1522 12" pipe needed.

1521

1520

1519

1518

Clearing + grubbing on

1517

L. From Sec. Cor To Sec. Cor.

1516

Mostly thru middle.

1515

Road was evidently cleared

according to Random line.

1514

1512+20-1565+11<sup>2</sup> Medium Light

Some Boulders.

1513

grubbing - several large pine stumps.

Stony clay.

+20

⊙ Sec. Cor. (Concrete Mon.)

Sec. Line Road Brushed out.

1512

(Sec. 24-25-137-30, 19-30-137-29)

1511

1510

1510+30 12" pipe needed.

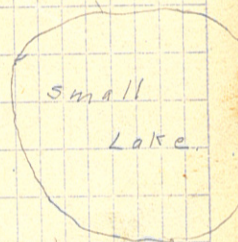
1509

1508

very stony.

1507

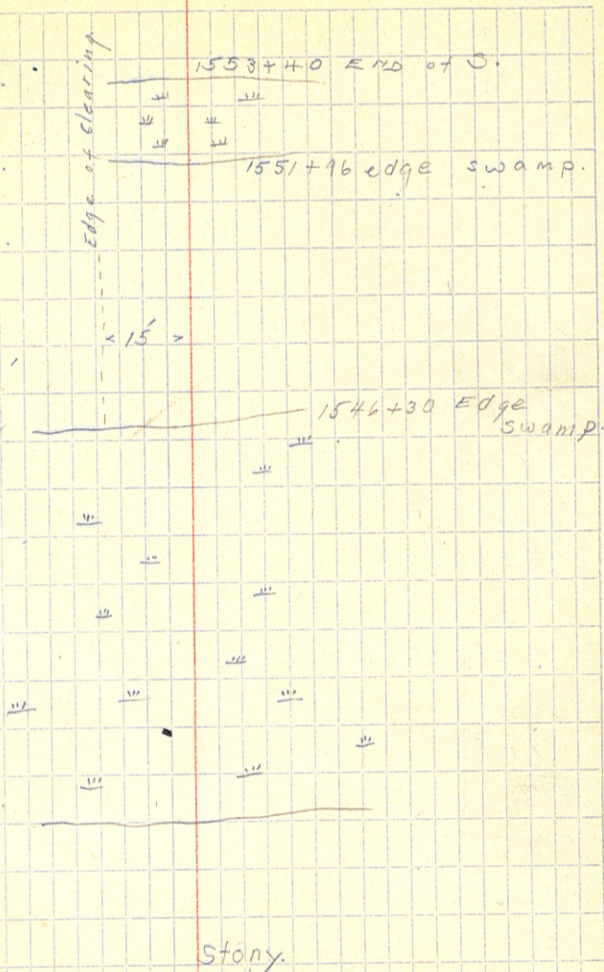
Large Boulders.



1554  
1553  
1552  
1551  
1550  
1549  
1548  
1547  
1546  
1545  
1544  
1543  
1542  
1541  
1540  
1539  
1538  
1537  
1536  
1535  
1534  
1533  
1532  
1531  
1530

12" pipe needed in Swamp.

12/1/14 70



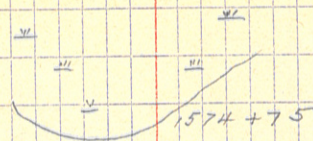


1577  
1576  
1575  
1574  
1573  
1572  
+22<sup>±</sup>  
1571  
1570  
1569  
1568  
1567  
1566  
+11<sup>±</sup>  
1565  
1564  
√1563  
1562  
1561  
1560  
1559  
1558  
1557  
1556  
1555

⊙ P.O.T.

⊙ Sec. Cor. (Wooden Stake)  
(Sec. 13-24-137-30, 18-19-137-29)

12/1/14. 71



stony.

Continued in Transit Book No. 2.

12/1/14

72

1602  
1601  
1600  
1599  
1598  
1597  
1596  
1595  
1594  
1593  
1592  
1591  
1590  
1589  
1588  
1587  
1586  
1585  
1584  
1583  
1582  
1581  
1580  
1579  
1578

S.

✓

✓

✓

✓

✓

✓

✓

✓

✓

✓

✓

✓

✓

✓

✓

✓

✓

✓

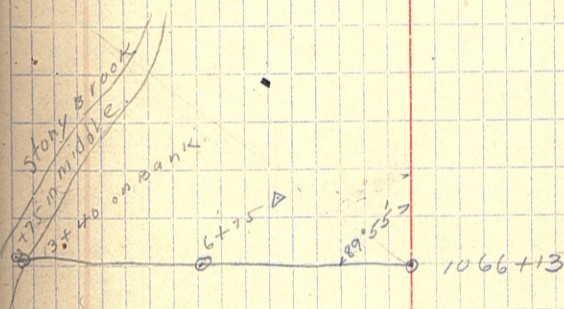
✓

	Level	for off-take	at Sta 1066+15	
	+5	H.I.	-5	E.L.V.
B.M.	1.61	1145.31		1143.70
T.P.	2.97	1141.83	6.45	1138.86
0.	on grade.	(Sta 1066+15)	2.7	39.1
0.	" Swamp.	"	5.3	36.5
1.			5.3	36.5
2.			5.3	36.5
3.			4.8	37.0
4.			5.7	36.1
5.			6.9	34.9
6.			8.1	33.7
7.			9.3	32.5
8.			10.9	30.9
+40			11.7	30.1
+50			9.7	32.1
9.			12.0	29.8
T.P.	2.27	1132.75	11.35	1130.48
10.			4.6	28.2
11.			6.2	26.6
12.			6.6	26.2
13.			7.4	25.4
+40	on Bank.	of Brook	9.1	23.7
W.L.	+42.		9.7	23.1
+42	2' water.			

11/24/14

73.

sta 8+50 to 13 meadow



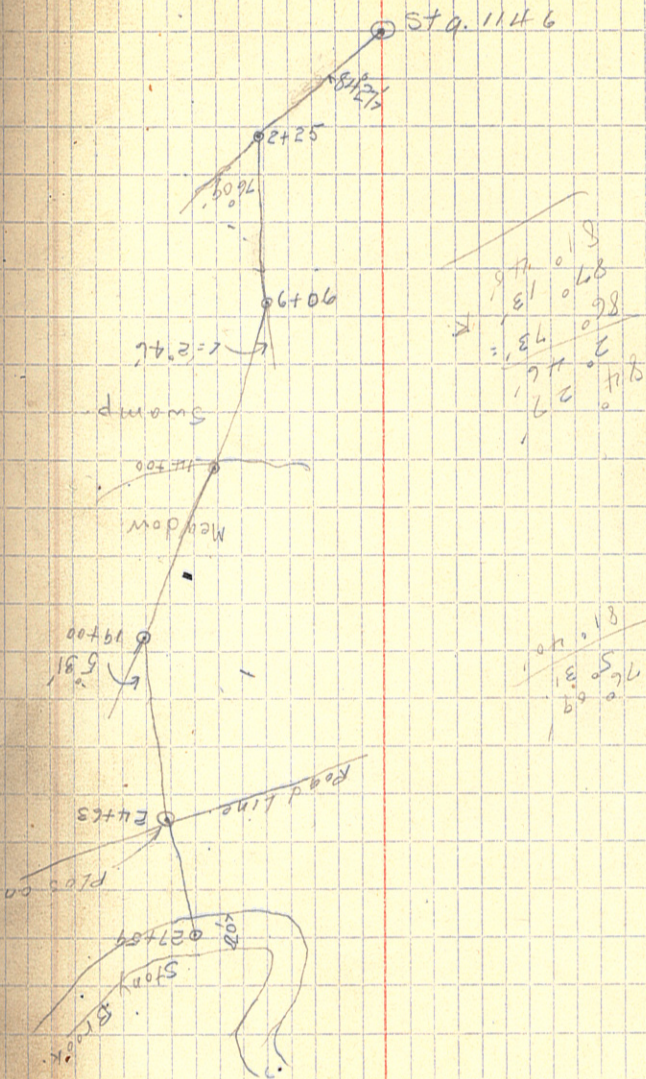
11/24/14

	+ S	H.I.	- S	
B.M.	3.20	1130.25		1126.45
T.P.	3.75	1126.00	8.0	1122.25
Sto. (146)			4.5	21.5
1			4.7	21.3
2			5.0	21.0
3			5.2	20.8
4			5.9	20.1
5			6.3	19.7
6			6.9	19.1
T.P.	3.30	1123.55	3.75	1120.25
7			4.7	18.9
8			4.8	18.8
9			5.0	18.6
10			4.9	18.7
11			5.8	17.8
12			5.8	17.8
T.P.	3.0	1121.23	5.32	1118.23
13			4.3	16.9
14			4.1	17.1
15			4.5	16.7
16			4.8	16.4
17			5.3	15.9
18			5.5	15.7
19			5.9	15.3
20			6.2	15.0

74

	+S	H.I.	-S	ELV
T.P.	3.92	1121.23	5.90	1115.33
21			4.5	14.8
22			5.0	14.3
23			5.7	13.6
24			5.6	13.7
Sta 1118 on Line			5.1	14.2
25			6.5	12.8
26			7.1	12.2
27			8.2	11.1
446	on Bank.		8.1	11.2
W.L.			9.2	10.1
+59	on Bottom.		11.0	8.3

11/24/14  
S. off-Take at Sta 1146) 75



Level Data for Bridge at Sta 1269

		W. L.	Depth of water.
100'	Upstream	1095.41	1.5'
200'	"	1095.91	1.0'
100'	Down stream.	1095.01	1.0"
200'	"	1094.78	0.5' Rapids.

50' upstream Rapids.

160' " Rapids.

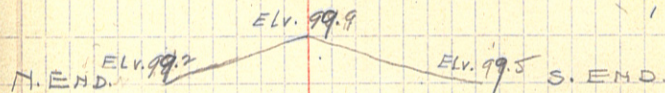
40' " 25' wide.

100' " Turns to N.W.

40' Down stream turns to NE. 15' wide.

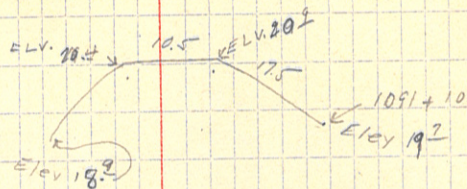
Bridge is 16' wide.

76



Sketch of Present Bridge  
showing ELV. & Length.

47' Long



Bridge is 47' Long.

4 bents

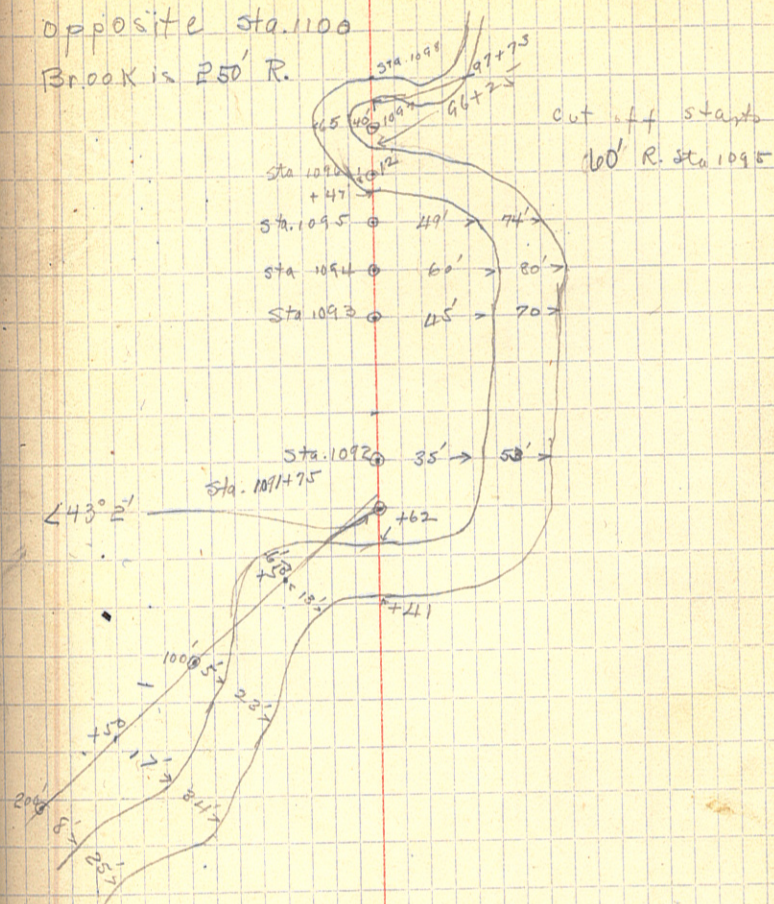
12.5' on ground

Stony Brook Bridge Data.

1091	ELV. of Sta. on fill. 18 <sup>±</sup> (Original ground. 15 <sup>±</sup> )	
1091+40	On Bank, ELV. 14 <sup>±</sup>	
+42	on Bottom, ELV. 13 <sup>±</sup>	
+50	W.L. 13 <sup>±</sup> on Bottom 12 <sup>±</sup>	
+60	on B. Ham, 13 <sup>±</sup>	
+62	on Bank 14 <sup>±</sup>	
+75	on Original ground 16 <sup>±</sup>	same as surrounding Land.

		W.L.	Depth of water.
Water Level	100' upstream	13 <sup>g</sup>	1.5'
"	" 200 "	14 <sup>±</sup>	1.2'
"	100' Down	13 <sup>2</sup>	1.5'
"	200 "	13 <sup>6</sup>	2.0'

Opposite sta. 1100  
Brook is 250' R.





79.38  
 66  
 47628  
 47628  
 5239.08  
 1531.2  
 3707.88

23.20  
 66  
 3920  
 3920  
 531.2

112658  
 112358  
 5299  
 80  
 19

06.4  
 04.7  
 9.7

2302  
 66  
 13812  
 1519.8  
 5239.08  
 6758.40  
 4531.2  
 5227.2

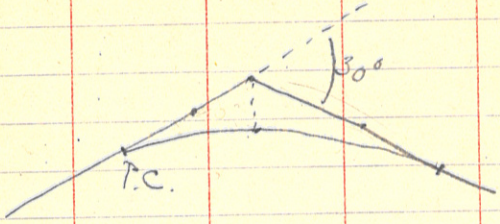
120270  
 117658  
 2612

2640  
 112  
 28

135379.2  
 5227.2  
 140606.4

135379.2  
 3707.9  
 139087.1

:C



$$\begin{array}{r} 133716 \\ 130122 \\ \hline 3644 \\ 2640 \\ \hline 2443 \end{array}$$

$$\begin{array}{r} 133716 \\ 125201 \\ \hline 5515 \\ 2400 \\ \hline 2400 \end{array}$$

$$\begin{array}{r} 130832 \\ 128201 \\ \hline 2631 \end{array}$$

# KEITH'S RAILROAD CURVE TABLES.

Published by KEUFFEL & ESSER CO., New York.

Entered according to Act of Congress in the year 1883,  
by W. Keuffel & H. Esser, in the office of the Librarian of Congress,  
in Washington, D.C.

Copyright, 1902, by Keuffel & Esser Co.

## HOW TO USE KEITH'S TABLES.

### EXAMPLE.

Wanted a Curve with an Ext. of about 12 ft. Angle  
of Intersection or I. P.=23° 20' to the R. at Station  
542+73.

Ext. in Tab. IV opposite 23° 20'=120.87  
120.87+12=132.87. Say a 10° Curve.

Tan. in Tab. IV opp. 23° 20'=1183.1  
1183.1+10=1193.1.

Tab. V. correction for A. 23° 20' for a 10° Cur.=0.16  
1193.1+0.16=1193.26=corrected Tangent.

(If corrected Ext. is required find in same way)  
Ang. 23° 20'=23.33° ÷ 10=2.3333=L. C.

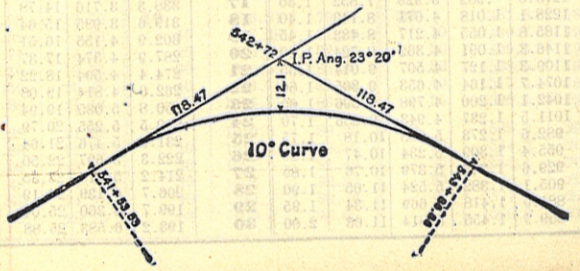
2° 19½'	=def. for sta.	542	I. P.=sta.	542+73
4° 49½'	" " "	+50	Tan.=	118.47
7° 19½'	" " "	543	B. C.=sta.	541+53.53
9° 49½'	" " "	+50	L. C.=	2.33.33
11° 40'	" " "	543+	E. C.=sta.	543+86.86
		86.86		

100-53.53=46.47×3'(def. for 1 ft. of 10° Cur.)=139.41'-  
2° 19½'=def. for sta. 542.

Def. for 50 ft.=2° 30' for a 10° Curve.

Def. for 86.86 ft.=1° 50½' for a 10° Curve

(These tables are published in Field Books of  
KEUFFEL & ESSER CO., New York, N. Y.)



KEITH'S RAILROAD CURVE TABLES  
Published by KEUFFEL & ESSER CO., New York

TABLE I. — Minutes in Decimals of a Degree.

Table with columns for minutes (1' to 10') and their decimal equivalents in increments of .0001.

TABLE II. — Inches in Decimals of a Foot.

Table with columns for inch increments (1-16, 3-32, 1/8, 3-16, 1/4, 5-16, 3/8, 1/2, 7/8, 15/16) and their decimal equivalents.

TABLE III. — Radii, Ordinates and Deflections.

Large table with columns for Degree, Radius, Mid. Ord., Tan. Def., and Chd. Def. for radii from 10 to 30 feet.

Sec. 13-137-30  
" 18-137-29

TABLE IV. — Tangents and Externals to a 1° Curve.

Table with columns for Angle, Tangent, and External values for angles from 1° to 30°.

