

Judicial Ditch No. 1.
Cass & Wadena

Lateral No. 2

J. A. Pomrasal
1919

(10)

FIELD BOOK

361

Book No. 2.

INDEX

Page to Page

Random line 28' North of sec 11, 13632
and notes on $\frac{1}{4}$ Cor between 11 & 14 1

Corrections on random 2

1
 Determined $\frac{1}{4}$ Cor between sec 11 & 14
 by fence cor which F.A. Mathews
 said was O.K. Set flag which could
 be seen from $\frac{1}{4}$ Cor between sec 28 & 11

65488' Δ = point 38' N of $\frac{1}{4}$ Cor bet sec 28 & 11

61491' \circ

53400.5 = 53408' Location

53400.2 \circ

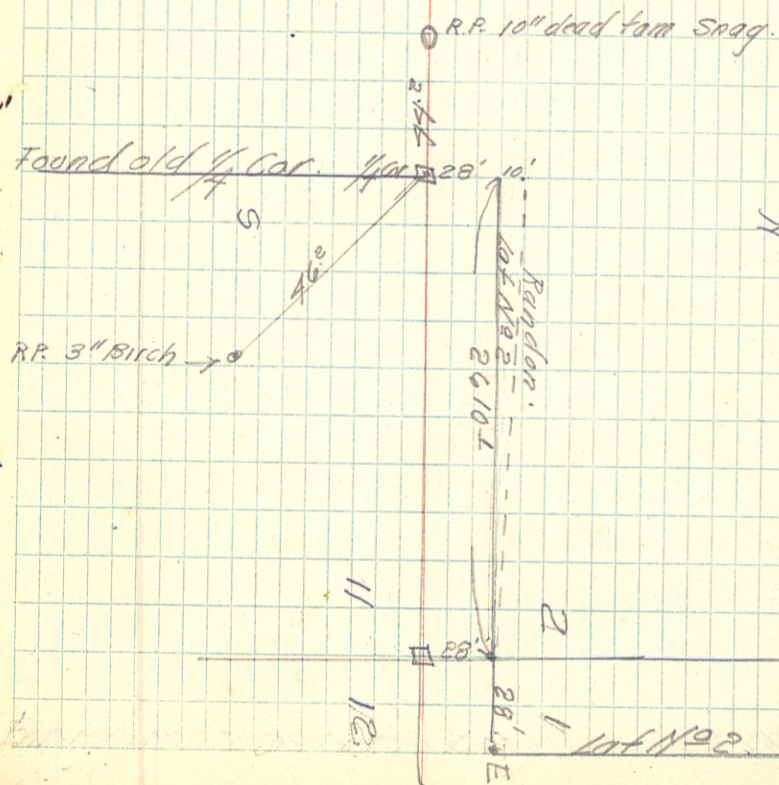
454994 \circ

39478' = Point 28' N of SE Cor sec 2 736-32

39450' change = 39460 Location

Random
Notes

March 4 1919
 J.F. Pongse L. Instrument
 Geo. Mathews Head Chain
 E. Felton Rear Chain



2

65753'

65

64

63

62

61

60

59

58

57

56

55

54

537005' = 53+08° location

53

52

51

50

49

48

47

46

45

44

43

42

41

40

39478° = 28' N of S.E. Cor. Sec 2 136-32

6000 North

100

970

931

893

855

816

778

740

701

663

625

587

548

510

472

433

395

357

318

280

242

204

165

127

89

50

12

28' 10'

True Sec Line North line sec 11

lat. # 2 Change of lat

Random line

S

N

S.E. Cor. Sec 2 28'

3

$$\begin{array}{r} 65+88 \\ 39+78 \\ \hline 26+10 \\ \\ 13+05 \\ 39+78 \\ \hline 52+83 \end{array}$$

98+02¹ change of line = 97+76² Location

82+00 0

66+16¹ $\frac{1}{4}$ Cor

65+88' Δ L 28' North of $\frac{1}{4}$ Cor Bet SEC

61+91⁰ 0

53+00⁵ = 53+08² location

53+00³ 0

39+99⁴ 0

39+78 = Point 28' N of SE Cor SEC 2

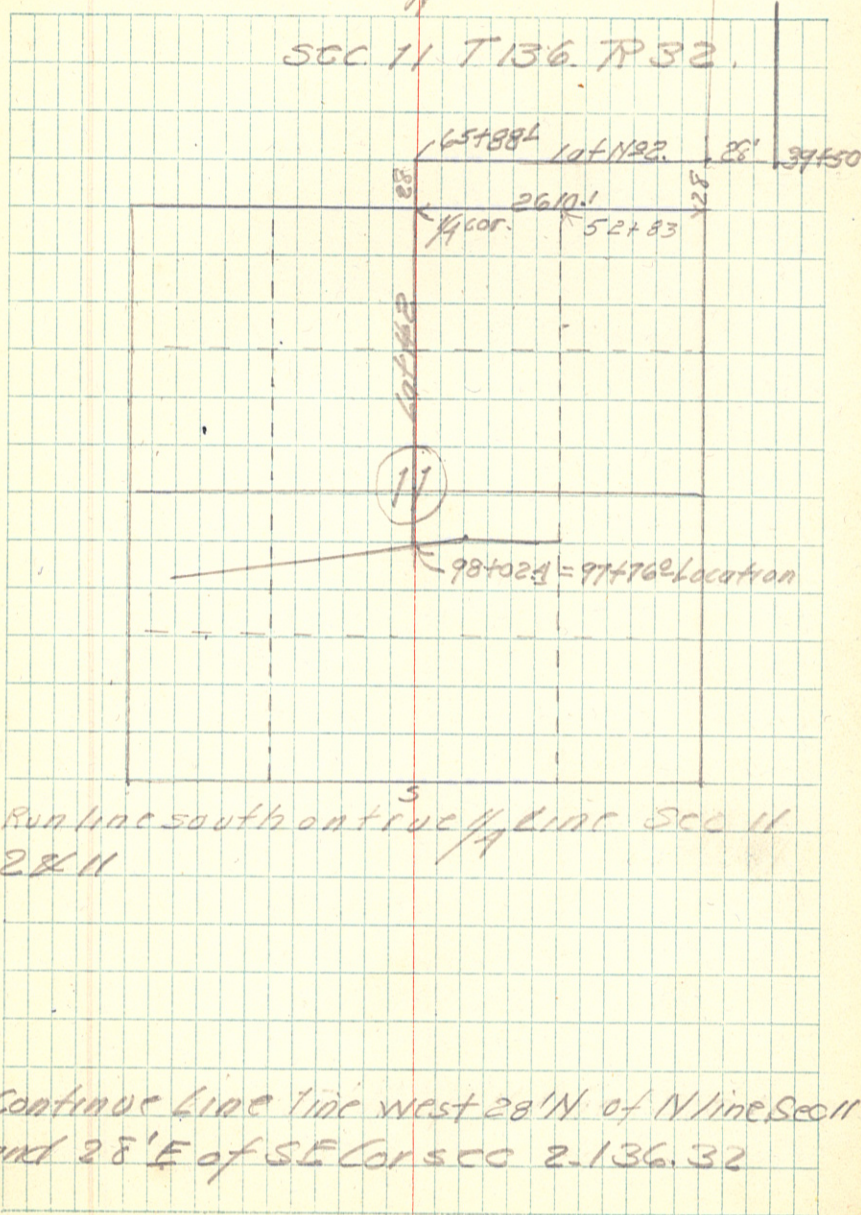
39+50 Δ R. = 39+60² location 28' North

39+00 = 39+00 Location

Change of Lat #2 of Judicial
Ditch #7

N

SEC 11 T136 R32



5	B.S	H.I.	Rod	F.S	Elev
		135886			
TP	1.15	5502		4.99	1353.87
56			2.2		52.8
57			2.1		52.6
58			1.6		50.4
59			1.8		50.2
60			1.9		50.1
61			1.7		50.3
62			5.0		50.0
63			5.7		49.3
64			6.7		48.3
TP	1.13	135400		5.15	1349.87
65			5.3		48.7
488' A			4.8		49.2
BM	1.21	5384		1.37	1349.63
66			4.7		49.1
67			5.1		48.4
68			5.3		48.5
450					
69			5.1		48.7
70			5.1		48.7
71			4.9		48.9
TP	1.09	5427		3.66	1350.18
72			1.9		49.4
73			5.0		49.3

Heavy tam spruce & balsam swamp.

" " " " "

" " " " "

" " " " "

" " " " "

" " " " "

" " " " "

" " " " "

" " " " "

" " " " "

" " " " "

" " " " "

" " " " "

BM. Spike in 8" dry tam 50' R. 65+80

" " " " "

" " " " "

" " " " "

(leave Heavy tam spruce & balsam swamp
enter down scattering tam)

6 Sta	B.S.	H.I.	Red	F.S.	Elev
		1354.27			
74			1.9		19.4
75			5.0		19.3
76			5.0		19.3
77			5.3		19.0
78			5.2		19.1
79			5.1		18.9
80			5.2		19.1
T.P.	160	⁸⁰ 1355.07		380	1350.97
81			4.1		19.0
82			5.6		19.5
83			5.7		19.4
84			5.2		19.9
85			5.3		19.8
86			0.2		18.9
87			5.7		19.4
88			4.1		19.0
T.P.	259	¹²⁹ 1353.19		447	1350.60
89			3.8		19.4
90			1.8		18.4
91			5.0		18.2
92			3.8		19.4
93			4.2		19.0
94			5.5		17.7
95			5.2		18.0

very scattering down tam (no clearing necessary)

leave scattering down tam enter small willows
and scattering down tam

leave small willows & scattering tam and enter
open swamp with very few scattering brush
draw runs south west

Sta	BS	HI	rod	FS	Elev
		1353.19			
T.P.	265	1351.96 ²²		3.88	1349.31
96			3.4		786
97			3.9		781
98			5.1		769
98+02.4			5.1		769
T.P.	210	16.79 ³¹⁹		5.29	46.67
T.P.	0.89	42.24 ⁶⁵³		7.92	41.35
T.P.	1.77	39.31 ²⁹³		7.70	37.54
BM				4.07	1335.24

on ice

98+02.4 = 97+769 location

BM 1335.24 on N.W. Cor of culvert sta 126+00
 1335.23 location
 01

8

JUDICIAL DITCH #7

Change in Location in Sec. 10-136-32.

Sta.	-	H.I.	+	Elev.
B.M.		1323.00	4.55	1318.45 ⁻⁸
191	5.60			1317.40
191	5.75			17.25
192	4.60			18.20
193	4.45			18.55
194	4.60			18.40
195	5.15			17.85
196	5.15			17.85
197	5.20			17.80
TP-	3.80			1319.20
+		1324.00	4.80	
198	5.85			18.15
199	4.70			19.30
200	6.45			17.55
201	5.75			18.25
202	7.20			16.80
203	7.00			17.00
TP-	6.80			1317.20
+		1324.05	6.85	
203+50	5.80			18.25
204	6.15			17.90
205	7.00			1317.05

June 25, 1919

 Inst. R. A. Dahms
 Rod. A. Hammarquist.
 Ax. J. Shearer.

B.M. on 5" spruce stump 20' L of Sta. 190+70.

196+50 End of Branch, dug.

9

205+50	4.50	1324.05	19.55
B.M.	2.15		1321.90
206	3.65		20.40
207	5.75		18.30
208	6.60		17.45
209	8.30		15.75
TP-	8.15		1315.90
+		1320.30	4.40
210	4.40		15.90
211	4.45		15.85
212	4.95		15.35
213	5.10		15.20
214	5.65		14.65
215	5.10		15.20
216	6.10		14.20
217 old	6.45		1313.85
217 old?	5.20		1315.10
B.M.	3.40		

B.M. on El. Pine N. of Sta. 205+50

9.25	Ditch Bot.
9.60	" "
8.90	
9.40	
10.70	
9.30	
9.60	

216 change = 217 old.

500' W of Sta. 210 on El. Pine,

10

LAT. N^o 2, CHANGE

Sta.s. 39+60 - 98+02 Substituted For 39+60 -

Sta.	Base	Flcr.	Grade Fl.	cut
39+60		1363.9		7.0
40		63.3	1356.0	7.3
41		62.6	1355.2	7.4
42		61.7	1354.4	7.3
43		60.5	1353.6	6.9
44		60.5	1352.8	7.7
45		59.9	1352.0	7.9
46		58.6	1351.2	7.4
47	A. O. Base	56.5	1350.4	6.1
48		55.7	1349.6	6.1
49		53.8	1348.8	5.0
50		53.2	1348.0	5.2
51		52.9	47.7	5.2
52		53.1	47.4	6.7
53		52.8	47.1	5.7
54		53.2	46.8	6.4
55		53.4	46.5	6.9
56		52.8	46.2	6.6
57		52.6	45.9	6.7
58		50.4	45.6	4.8
59		50.2	45.3	4.9
60		50.1	1345.0	5.1
61	50.3	44.9	5.4	
62	1350.0	44.8	5.2	

97+76

(Mowatt's Change)

1070

Top	cu. Yds.	Cost.
18.0	118.0	11.80
18.6	295.4	29.54
18.8	309.0	30.90
18.6	309.0	30.90
17.8	291.5	29.15
19.4	305.9	30.59
19.8	340.8	34.08
18.8	330.0	33.00
16.2	268.5	26.85
16.2	228.0	22.80
14.0	196.2	19.62
14.4	171.8	17.18
14.4	177.2	17.72
17.4	219.0	21.90
15.4	234.0	23.40
16.8	225.2	22.52
17.8	261.0	26.10
17.2	268.5	26.85
17.4	261.0	26.10
13.6	207.8	20.78
13.8	159.2	15.92
14.2	166.6	16.66
14.8	179.7	17.97
14.4	182.4	18.24

56 33.7

Abandoned
see Page #16

11				5.2
63		1349.3	1344.7	4.6
64		48.3	44.6	3.7
65		48.7	44.5	4.2
66		49.1	44.4	4.7
67		48.4	44.3	4.1
68		48.5	44.2	4.3
69		48.7	44.1	4.6
70		48.7	44.0	4.7
71		48.9	43.9	5.0
72		49.4	43.8	5.6
73		49.3	43.7	5.6
74		49.4	43.6	5.8
75		49.3	43.5	5.8
76		49.3	43.4	5.9
77		49.0	43.3	5.7
78		49.1	43.2	5.9
79		48.9	43.1	5.8
80		49.1	42.9	6.2
81		49.0	42.8	6.2
82		49.5	42.7	6.8
83		49.4	42.6	6.8
84		49.9	42.5	7.4
85		49.8	42.4	7.4
86		48.9	42.3	6.6
87		49.4	42.2	7.2

A.O. Base

13.2	161.5	16.15
11.4	125.5	12.55
12.4	116.3	11.63
13.4	139.3	13.93
12.2	136.8	13.68
12.6	127.6	12.76
13.2	139.3	13.93
13.4	149.0	14.90
14.0	159.1	15.91
15.2	182.4	18.24
15.2	199.1	19.91
15.6	204.8	20.48
15.6	210.2	21.02
15.8	213.3	21.33
15.4	210.2	21.02
15.8	210.2	21.02
15.6	213.3	21.33
16.4	222.0	22.20
16.4	234.0	23.40
17.6	252.7	25.27
17.6	271.8	27.18
18.8	291.5	29.15
18.8	312.1	31.21
17.2	285.2	28.52
18.4	278.0	27.80

5,045.2

Abandoned
See Page #16

12

88		1349.0	1342.1	7.2 6.9
89		49.4	42.0	7.4
90		48.4	41.9	6.5
91	A.0 Base	48.2	41.8	6.4
92		49.4	41.7	7.7
93		49.0	41.6	7.4
94		47.7	41.5	6.2
95		48.0	41.4	6.6
96		48.6	41.3	7.3
97		48.1	41.2	6.9
98		46.9	1341.0	5.9
TOT		1346.9		5.9

17.8	288.1	28.81
18.8	295.4	29.54
17.0	282.2	28.22
16.8	249.5	24.95
19.4	288.1	28.81
18.8	323.3	32.33
16.4	271.8	27.18
17.2	246.4	24.64
18.6	275.0	27.50
17.8	298.7	29.87
15.8	246.4	24.64
15.8	4.0	.40
	3068.9	

A.0 Base

13

JUDICIAL DITCH No 7.

Investigation between Secs, 35 & 36-137-32

Sta.	H.I.	+ S	Elev.
	1368.25	1.45	1366.80
	4.75		1363.50
B.M.	2.50		1365.75
1	4.90		63.35
2	4.30		63.95
3	4.15		64.10
4	4.10		64.15
5	3.80?		

Sept. 3, 1919

10.4

52.5

1354.8

15.3

1365.1

1355

1360

Ground El. of Sta. 10+00, Branch #1

40+14 Main

on Tamarack ^{stump} S.E. of Sta. 40+14, Main #7.

14 JUDICIAL DITCH No. 7

Investigation at Farnum Lake 714-745 Main

Sta.		H.I.	+ Elev.
B.M.		1252.40	7.30 1245.10
TP -	3.40		1249.00
+		1249.80	0.80
TP -	6.30		1243.50
+		1244.50	1.00
TP -	5.40		1239.10
+		1243.60	4.50
752	9.90		1233.70
751	8.60		1235.00
750	9.70		1233.90
TP -	4.00		1239.60
+		1243.60	4.00
747	7.50		1234.10
748	^{Bank} 4.55		
747	4.25		
746	4.30		
745	4.50		
744	6.30		1237.30

Sept. 30, 1919

R. A. Dahms, Inst.
A. Hammarquist, Rod.

on N.W. Cor of Concrete Abutment.

Bot. Ditch

9.50 1234.1 Bot. of Ditch

9.60 1234.0

9.60 1234.0

8.20 1235.4

7.30 1236.3

Edge of Lake

15

LAT. No. 2.

From E 1/4 cor on N Line of Sec. 11-136-32, S on

Sta.	- R.	H.I.	+	Elev.
52+83		1362.70	9.90	1352.80
53	9.90			1352.80
54	8.90			1353.80
55	7.90			1354.80
56	6.65			1356.05
57	5.00			1357.70
58	5.30			1357.40
59	5.50			1357.20
60	5.90			1356.80
TP-	3.90			1358.80
+		1361.10	2.30	
61	4.05			1357.05
62	4.05			1357.05
63	4.05			1357.05
64	4.60			1356.50
65	4.30			1356.80
66	5.30			1355.80
66+44	5.50			1355.60

June 22, 1920

R. A. Dahms.
E. E. Griffith.

1/4 to sta. 66+44 of Location.

E 1/4 cor on N Line of Sec. 11-136-32.

16.

LAT. No. 2 Change as Located

Stations: 39+60 - 75+00

Substituted

at Final Hearing.

for sta's 39+60 - 75+00 on Location Line.

Sta.	Base	Elev.	Grade El.	Cut
39+60	4.0	1363.9		7.0
40		63.3	1356.0	7.3
41		62.6	55.3	7.3
42		61.7	54.6	6.1
43		60.5	53.9	6.6
44		60.5	53.2	7.3
45		59.9	52.5	7.4
46		58.6	51.8	6.8
47		56.5	51.1	5.4
48		55.7	50.4	5.3
49		53.8	49.7	4.1
50	X	53.2	1349.0	4.2
51		52.9	48.96	3.9
52		53.1	48.92	4.2
53		52.8	48.88	3.9
54		53.8	48.84	5.0
55		54.8	48.80	6.0
56		56.1	48.76	7.3
57		57.7	48.72	9.0
58		57.4	48.68	8.7
59		57.2	48.64	8.6
60		56.8	48.60	8.2
61		57.1	48.56	8.5
62		57.1	48.52	8.6

4.0 ft. Base

Top	Cu. Yds.	Cost.
18.0		
18.6	305.9	
18.6	305.9	
16.2	271.8	
17.2	243.2	
18.6	282.2	
18.8	309.0	
17.6	298.7	
14.8	228.0	
14.6	185.3	
12.2	151.5	
12.4	125.5	
11.8	120.7	
12.4	120.7	
11.8	120.7	
14.0	139.3	
15.0	193.6	
18.6	261.0	
22.0	366.8	
21.4	421.2	
21.2	405.0	
20.4	385.8	
21.0	382.0	
21.2	397.4	

@ 10.959 per cu. yd.

6021.2 # 629.21.

Est. # 18, Aug. 12 - 1960

17.

63	1357.1	1348.48	8.6
64	56.5	48.44	8.1
65	56.8	48.40	8.4
66	55.8	48.36	7.4
67	55.3	48.32	7.0
68	54.9	48.28	6.6
69	54.9	48.24	6.7
70	55.1	48.20	6.9
71	54.8	48.16	6.6
72	54.7	48.12	6.6
73	54.6	48.08	6.5
74	54.5	48.04	6.5
75	54.7	1348.00	6.7

B.M. in 4" Spire
502 sta. 73-Location
E.L. = 1354.61

40' Base

0.04

21.2	401.3
20.2	382.0
20.8	374.3
18.8	348.1
18.0	312.1
17.2	271.8
17.4	261.0
17.8	271.8
17.2	268.5
17.2	259.0
17.0	255.9
17.0	252.7
17.4	259.0

3917.5 #409.38

6021.2

9938.7

9585.1 ydg. in old line.

353.6 Increase in Ydgs due to change

© 10.45¢ per C.Y.

Est #18, Aug 12-1920

V

M.
43-53 Needs cleaning. 0
114 Old channel blocked by dump.
129 Dump on R/W. 0
137-139 Cuts to be cleaned. 0
Intersection of Branch #4, + Main, cleaning.
590-600 Cleaning 0
Lateral No. 2. 150-183, poorest
117-161 Lat. #4. No pitch.