

COUNTY DITE 7c 3

⑩

⑩

FIELD BOOK

361

29

N. 7428 W
 1719
 9197
 17960
 9197
 8873
 7217
 1656
 5421
 7327
 3095
 10412

17960
 10412
 7548

Index.

	Page to Page
Main Ditch	1 - 8
Laf No 5	8 - 11
Laf No 4	11 - 14
Laf No 3	14 -
Levels M.D.	15 - 22
" Laf No 1	23 - 27
" Laf No 5	28 - 32
" " No 4	32 - 35
" " No 3	35 - 36
" " No 2	37 - 40
Sounding on Barris La Me	40

8⁰⁰ varr
Main Ditch

31 18

20 17

16 +95° Δ 7297' L 515° 56' W 25' EXT

15 16

14 15

13 14

12 13

11 12

10 11

9 10

8 9

7 8

6 7

+25° Δ 1719' L 588° 13' W

5 6

4 5

3 4

2 3

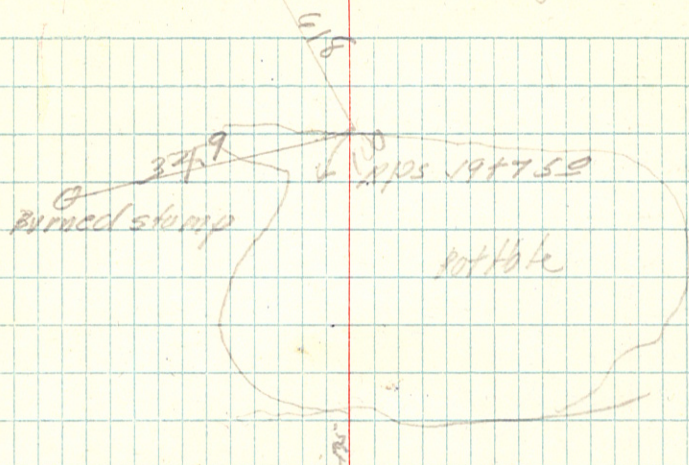
1 2

0 1

00

15° 32' R N 74° 25' W

same crew 62 Dry snag Feb. 19, 1915 very cold ↖



5" pop Δ 52° RPS

10" burned
pop stump

going through
low place of neck
of land

in lake

Barr's Lake

39
 38
 37
 36
 35
 34
 33
 32+75⁸
 32
 31
 +60.5
 30
 29
 28
 27
 +11.0
 26
 25
 24
 23
 22
 21
 +16.0
 20
 19

$\Delta 34^{\circ}33' L \ 58^{\circ}54' W \ 8' EX$

$\Delta 12^{\circ}45' R \ 162^{\circ}13' W \ 4' EX$

$\Delta 30^{\circ}45' R \ 176^{\circ}38' W \ 15' EX$

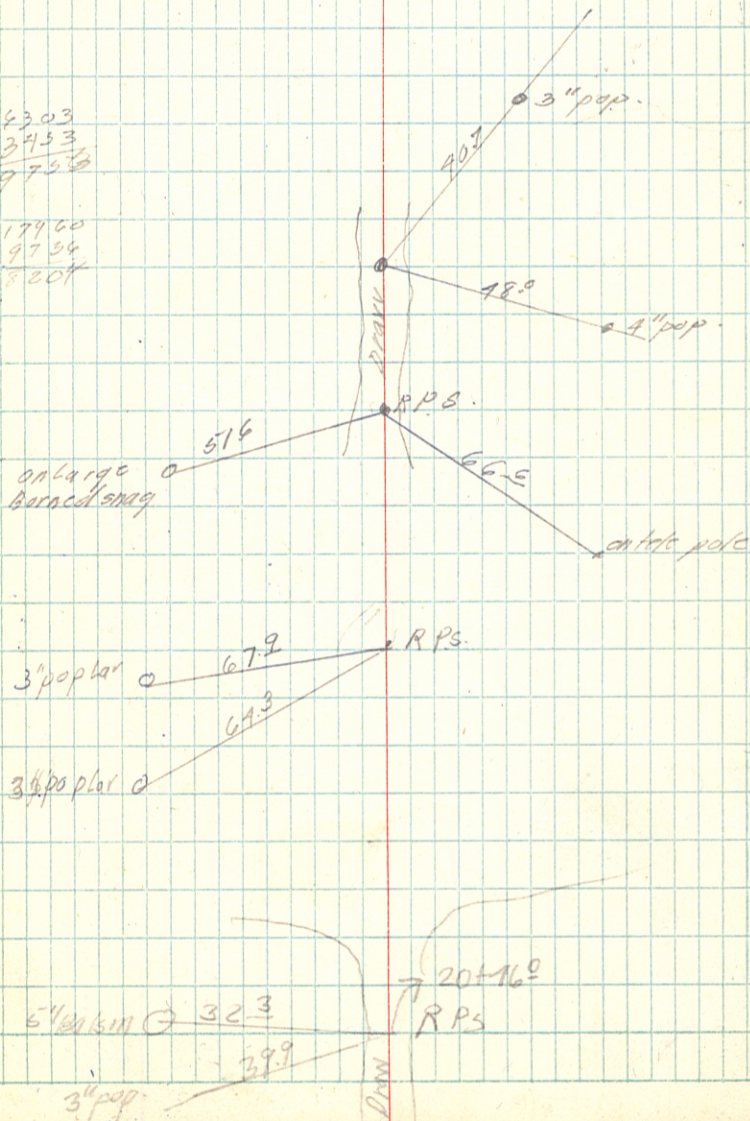
$\Delta 56^{\circ}21' R \ 572^{\circ}17' W \ 12' EX$

Feb 19, 1918
Cold

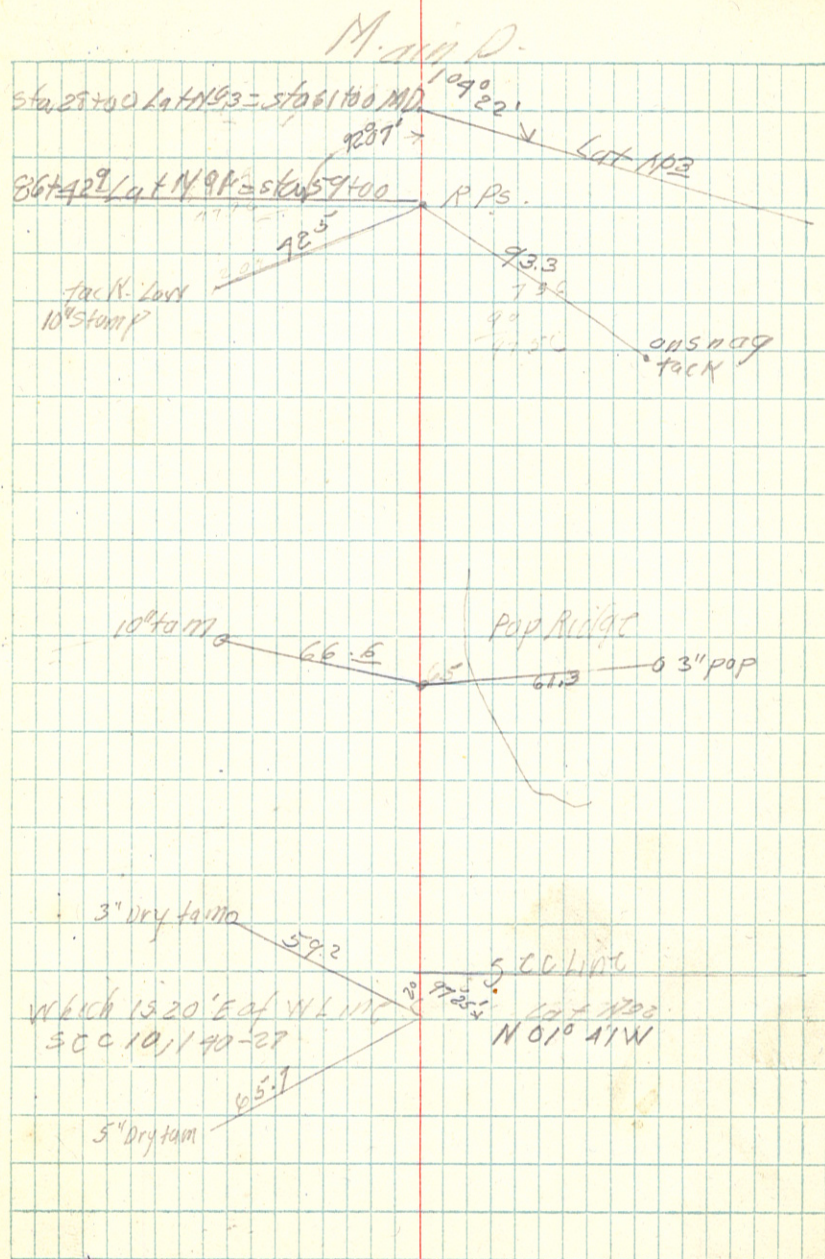
2

4303
 3433
 9736

17460
 9734
 8204



- (
- 61
- 60
- 59 Pot s End of Lat No 1
- 58
- 57
- 56
- 55
- 54
- 53
- 52
- 51
- (50
- +78^E 047°26' L 533°28' N 20' EX
- 49
- 48
- 47
- 46
- 45
- 44
- +1119 = 00 of Lat No 2 097°25' R
- 43
- 42 580°54' W
- 41
- 40



99 Pot

88+994 = End of lat N^o 4 sta 30+22^o

80+614 $\Delta 12^{\circ}10' \text{ } 582^{\circ}23' \text{ W}$

+11.1 $\Delta 33^{\circ}15' \text{ R } N 65^{\circ}37' \text{ W}$

75

74

73

72

71

70

69

68

67

66

65

64

+13.9 $\Delta 27^{\circ}40' \text{ R } 561^{\circ}08' \text{ W}$

63

62

18 EX

Pomase L Feb 19, 1915

Star K4

W. M. S. H.

Pop.

M. D.

77.6

R.P.S. Feb 23, 1918

Jack in

34 Pop.

42.5

Lat N^o 4

Jack in

6" Cedar

46.4

47.9

53435

2749

62344m

Jack in 6"

Tam.

26.2

Feb 20, Colder

338

R.P.S. then over

Jack in 6"

Tam.

Jack in 6"

Pop.

64.2

R.P.S.

Jack in

Behind Swamp

56.5

+90

118

117

116

+60

115

114

+60

113

+90

Cross Creek

112

+85.5 $\Delta 53^{\circ}10' R$ $\Delta 66^{\circ}17' W$

11

10

+70.6 $\Delta 15^{\circ}40' S$ $\Delta 81^{\circ}57' W$

109

08

07

06

+90 05 cross ditch

+69.5 Pot

104 $58^{\circ}23' W$

103

102

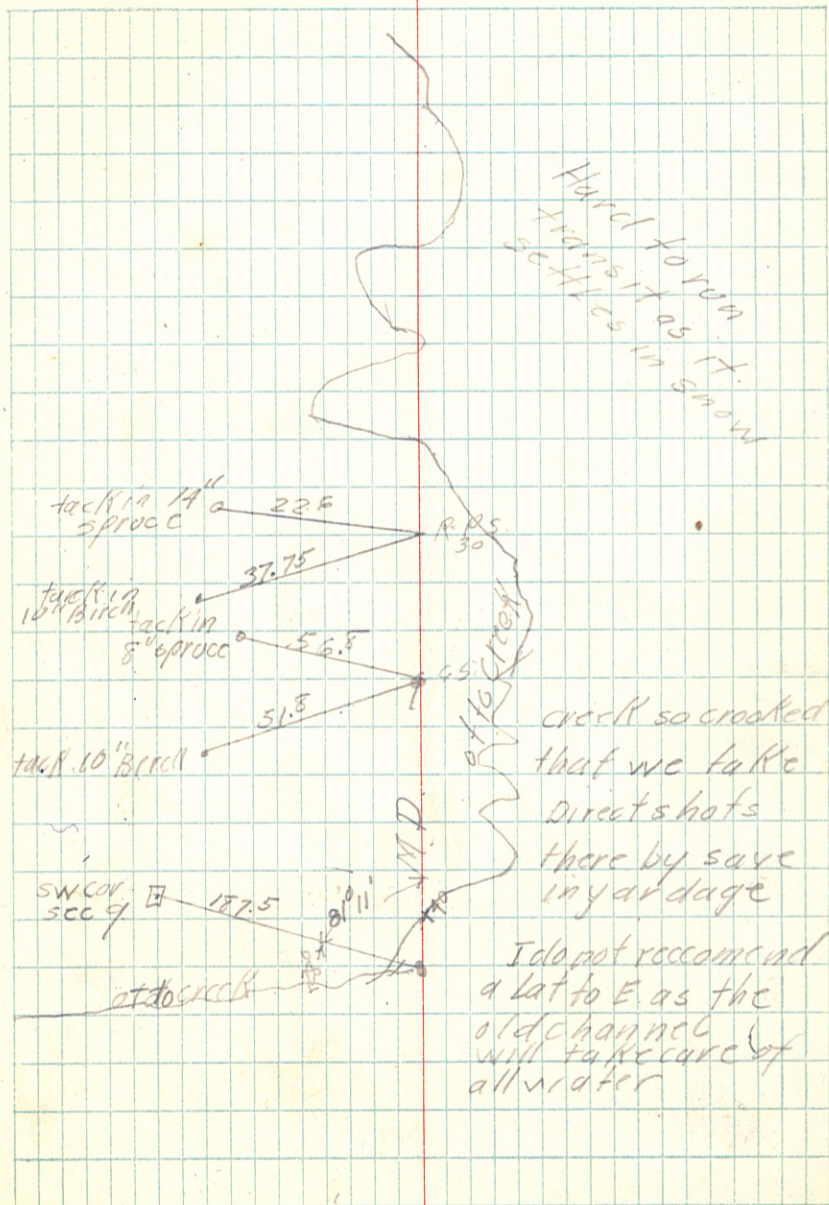
101

100

Pomasel
starky

Feb 23, 1918.
Main Ditch

4



Feb 22, 1911 M.P.

7

+32° End of Main Ditch

128

+75

in Cr.

127+25

CROSS

+85

CROSS CR

+54.2 $\Delta 4^{\circ} 30' R$ 526° 08' W

126

125

124

+38.3 $\Delta 31^{\circ} 37' L$ 521° 38' W

123

122

121

+25

Cross Ditch

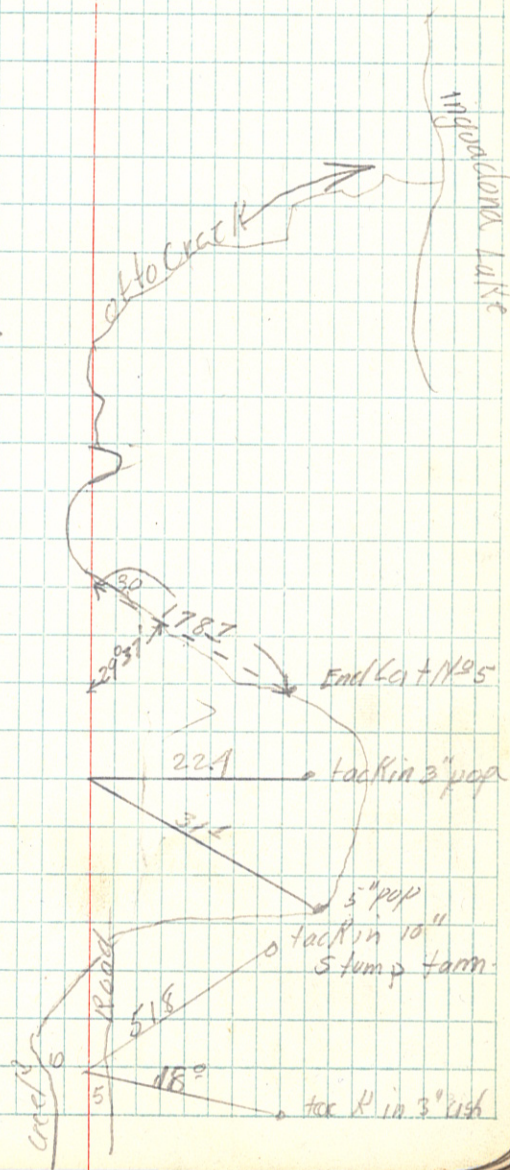
120

+59.5 $\Delta 60^{\circ} 28' L$ 553° 15' W

119

$\Delta 66^{\circ} 17' W$

top of creek 12' wide



19
 18
 17
 16
 +20⁰
 15
 14
 13
 12
 +76⁸
 11
 10
 9
 8
 7
 6
 5
 4
 3
 2
 +65
 +49⁵
 1
 00

$\Delta 17^{\circ}09' L$

$\Delta 12^{\circ}53' R$

$\Delta 13^{\circ}43' L$

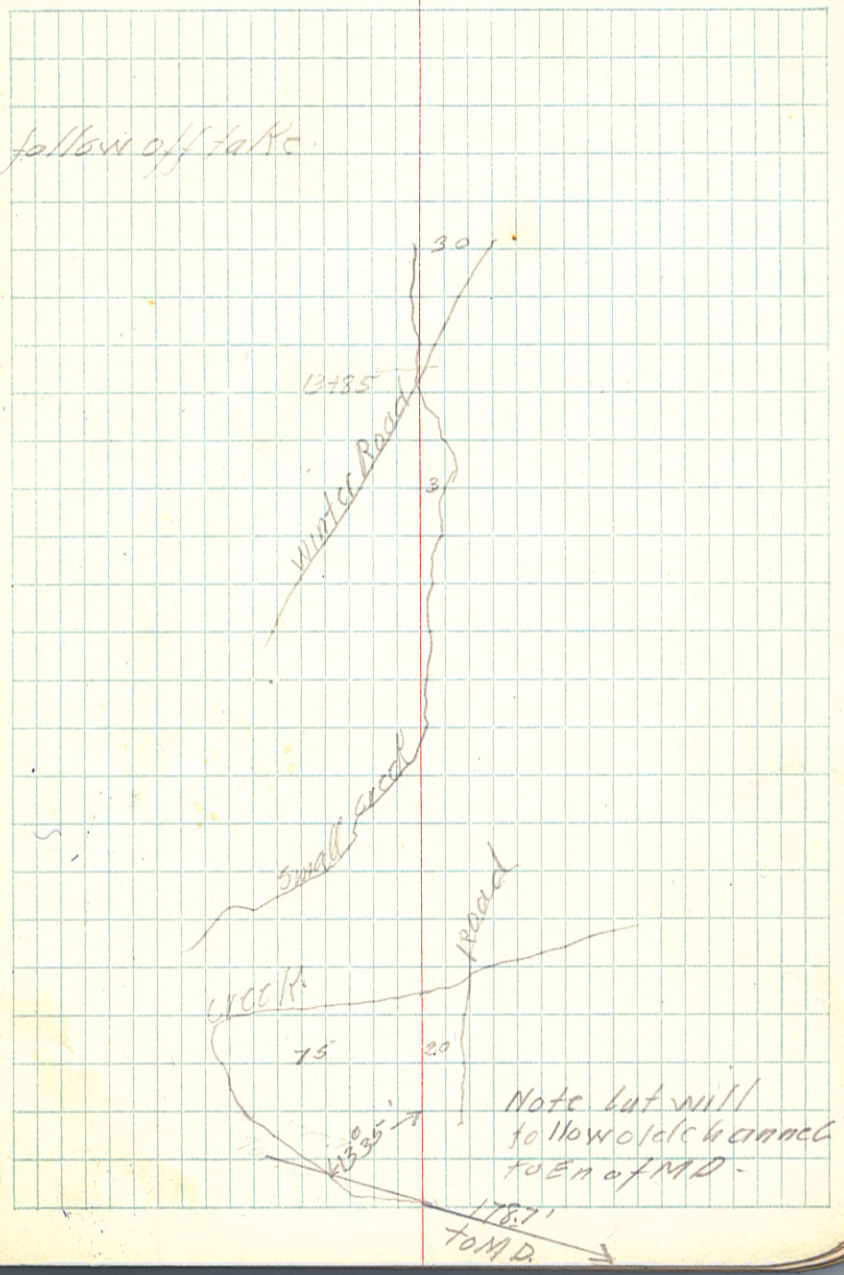
End of off take

Cross Cr

In creek

Lat N^o 5 of Co Ditch N^o 138

follow off take



Feb 22, 1978.

Lat No 5

9

38

37

36

35

34

+26° 11' 51" L

33

32

+58° 33' 28" R

31

+87° 3' 28" L

+70° 6'

+44° 6' 59" 55" R

30

29

28

27

26

25

24

23

22

21

20

197880 18° 38' R

Road →

New Graded Road: West Line Sec 9

Note a 30" x 24" CIP
to be placed here

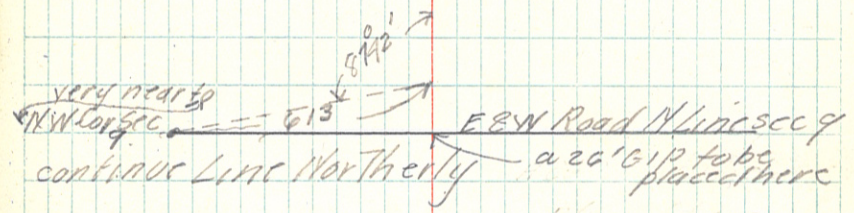
Northy now has a
24" x 24" CIP for same
opening

- 60
- 59
- 58
- 57
- 56
- 55
- 54
- 53
- 52
- 450 Δ5°30'R
- 422°
- 405
- 51
- 50
- 49
- 48
- 478° Δ26°45'L
- 47
- 46
- 45
- 44
- 43
- 42
- 41
- 40
- 39

End off talk

Lat No 5

sec levels for Encl of Lat No 5



Feb. 22, 1918

11

Lat No 4



Angles read with Sta tracing

etc 43 21 00 + 1 + 2 etc. N. to Sta 22 to 90.

Note we extend Lat No 4 North to E & W Road of North Line sec 9.

and chaining will go as follows.

line to on next page.

in south side ditch on N Line sec 9

Continuation North of Lat No 4.

- 00
- + 1
- + 2
- + 3
- + 4
- + 5
- + 6
- + 7
- + 8
- + 9
- + 10
- + 11
- + 12
- + 13
- + 14
- + 15
- + 16
- + 17
- + 18
- + 19
- + 20
- + 21
- 22

+61.2 22°16' L

Note from sta 6 + 61.2 + sta 12 + 48.6 on tang

22 + 0.9

Beginning of Lat No 4

Feb 23, 1911
Pomasey
starky

12

22

21

20

19

18

17

16

15

14

13

-118.6 $\Delta 5183'2$

12

11

10

9

+75

8

7

6

5

4

3

2

1

00

Winter Road

+220

30

29

28 $\Delta 96^{\circ} 35' R$

27

26

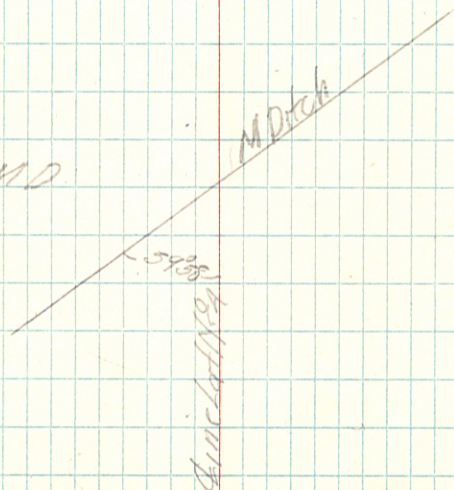
25

24

23

End of Liaison No 4 = sta

58 + 99.1 MD



Continued on opposite
Page.

24

23

22

+467 A3228' L

21

20

19

18

17

16

15

14

13

12

11

10

9

8

7

6

5

4

3

2

1

0

tack in stamp

209

RPS-0100

17.8

tack in stamp

Leaf No 3
Feb. 25 PM

14

28 400 End Leaf No 3 =

27

26

25

10432 -
Main Ditch
Sta 6100 M D
CAVAT

Sta	BS.	HI	FS	Elev	BM.
	3.18	20318			200.00
0			4.1	197.1	✓
1			6.1	97.1	✓
2			6.1	97.1	✓
3			6.1	97.1	✓
+50			6.1	97.1	✓
4			5.4	97.8	✓
5			5.4	97.8	✓
6			5.1	98.1	✓
7			5.0	98.2	✓
8			7.5	98.7	✓
9			4.3	98.9	✓
10			4.7	98.5	✓
11			4.7	98.5	✓
12			5.2	98.0	✓
TP	2.45	200.50	5.13		198.05 ✓
13			3.5	97.0	✓
14			5.4	95.1	✓
+50					
15			7.5	93.0	✓
16			7.3	93.2	✓
TP	1.15	195.71	5.94	194.56	✓
17			2.5	93.2	✓
18			2.8	92.9	✓
19			3.6	92.1	✓

Levels On Main Ditch 15
 Dornasel Level. Feb 23, 1918
 Starky Rod.

assumed.

100 Elev Barr's Lake

" " "

" " "

" " " open swp

Edge Lake

BM. Spike in 10" poplar 40' 4" sta 9 to 6
 Elev. 200.00 assumed

Enter Brush

" "

Leave Brush.

open swp

M.D.
Feb 23. 1918.

16

Sta	+S	HI	-S	Elev	B.M.
		145.71			
20			5.0	190.7	✓
21			5.1	90.6	✓
22			5.2	90.5	✓
23			5.8	89.9	✓
24			5.6	90.1	✓
T.P.	1.43	³⁶⁴ 192.07	5.07		190.64 ✓
25			2.7	89.4	✓
26			3.6	88.5	✓
27			4.4	87.7	✓
28			4.9	87.2	✓
29			5.0	87.1	✓
+90					
30			5.0	87.1	✓
B.M.			4.02		188.05 ✓
31			6.4	85.7	✓
32			6.4	85.7	✓
33			8.2	83.9	✓
34			10.9	81.7	✓
T.P.	3.12	⁶⁸⁵ 185.22	9.97		182.10 ✓
35			3.5	81.7	✓
36			4.6	80.6	✓
37			4.1	80.8	✓
38			4.5	80.7	✓
39			5.0	80.2	✓

open Swamp.

112 S. Private Road

B.M. spike in tele pole 60' N. Sta 30+25.
(Elev)

Sta	+ S	H1	- S	Red	Elev ^s
		18522			
40				5.0	180.2 ✓
41				4.8	80.4 ✓
42				5.0	80.2 ✓
43				4.7	80.5 ✓
T.P.	2.59	189.98 ⁷⁴	3.33		181.89 ✓
44				4.1	80.4 ✓
45				4.1	80.4 ✓
46				4.2	80.3 ✓
47				4.4	80.1 ✓
48				4.5	80.0 ✓
48.5					
49				5.2	79.3 ✓
B.M.			3.35		181.13 ✓
50				5.0	79.5 ✓
51				5.4	79.1 ✓
52				5.6	79.0 ✓
53				5.1	79.4 ✓
54				5.6	78.9 ✓
55		251		5.4	79.1 ✓
T.P.	1.71	181.97	4.22		180.26 ✓
56			3	3.8	78.2 ✓
57				4.0	78.0 ✓
58				3.8	78.2 ✓

Main Ditch
Feb 23, 1918. 17
A good day
considering

later brush
"
T.P. on hub. = 00 lat No 2. 43+41.2

Leave brush.

B.M. spike in 6" diam 75' L sta. 49+78.8 also R.P.
Elev. 181.13.

Open SW p.
"
"
"
"

sta	+S	#1	-S	Rod	Elev
		18197			
59				392	178.05 ✓
60				5.0	77.0 ✓
61				4.5	77.5 ✓
BM			253		179.44 ✓
62				5.0	77.0 ✓
63				4.8	77.2 ✓
T.P.	378	18103	4.72		177.25 ✓
64				4.1	76.9 ✓
65				4.5	76.5 ✓
66				4.7	76.3 ✓
67				4.6	76.4 ✓
68			2	4.8	76.2 ✓
69				5.1	75.9 ✓
70				4.9	76.1 ✓
71				4.9	76.1 ✓
72				4.8	76.2 ✓
73				4.9	76.1 ✓
74				4.5	76.5 ✓
75		.84		4.6	76.4 ✓
T.P.	320	18019	4.04		176.99 ✓
76				4.1	76.1 ✓
77				4.3	75.9 ✓
78				4.0	76.2 ✓
79				4.3	75.9 ✓

Main Ditch
Feb 23, 1918

18

= 86+42.9 End lat N91. on Hub.

B.M. spike in 4" Pop. 100' R sta 27 of lot N93

spike in log sta 63+138 Δ to R (Enter Br.)

BRUSH

"

"

"

"

"

"

"

"

"

"

"

"

"

"

"

continued

PomaseL Level Main Ditch
Starky Rod Fc623.1918

Sta	+ S	H1	- S.	Rod	Elev
		180.19			
80				4.5	175.7 ✓
81				4.8	75.4 ✓
82				4.6	75.6 ✓
83				4.5	75.7 ✓
84				4.7	75.5 ✓
85		1.6		4.9	75.3 ✓
T.P.	337	179.79	3.77		176.42 ✓
86				4.8	75.0 ✓
87				5.3	74.5 ✓
88				5.1	74.7 ✓
T.P. on spike		515			179.69 ✓
89				4.9	74.9 ✓
90				4.5	75.3 ✓
91				5.5	74.3 ✓
92				5.3	74.5 ✓
93				5.3	74.5 ✓
94				5.3	74.5 ✓
95				5.3	74.5 ✓
T.P.	399	179.05	4.23		175.56
96				4.6	74.5 ✓
97				4.9	74.2 ✓
98				4.5	74.6 ✓
99				4.9	74.2 ✓
100				4.8	74.3 ✓

Brush - continued

"
"
"
"
"
"
"
"
"
"

= 30+222 End of lat N 2 q. which = 88+94.4 of M.D.
Brush -

"
"
"
"
"
"
"
"
"
"

" 98+50° Leave Brush.
open.

Feb 23, 1918

Main Ditch

20

Sta	+S	HI	-S	Red	Elev.
		17905			
101				58	73.3 ✓
102				4.9	74.2 ✓
103				53	73.5 ✓
104				6.7	72.4 ✓
105		584		9.0	70.1 ✓
T.P.	116	17321	7.00		172.05 ✓
+50					—
+60					—
106				3.7	69.5 ✓
107				2.8	70.4 ✓
108				7.3	68.9 ✓
109				4.6	68.6 ✓
110				4.8	68.4 ✓
111				5.3	67.9 ✓
+855				6.2	67.0 ✓
T.P.	265	17036	550		167.71 ✓
112				3.5	66.9 ✓
+40					—
113				3.9	66.5 ✓
+70				4.5	65.9 ✓
+80				3.0	67.4 ✓
114				3.5	66.9 ✓
115				4.7	65.7 ✓

(Enter brush) tag alders Birch & Elms
cross offset Brush

cr 10' R.

cr 10' R.

cross creek

cr 10' L.

Leave Brush

Mainditch
Feb 23, 1918

21

Sta	+S	HI	-S	Rod	Elev
		17036			
115	+60			48	165.6 ✓
	+70			7.9	62.5 ✓
	+85			4.7	65.7 ✓
	116			5.1	65.3 ✓
	117			4.4	66.0 ✓
	+90			5.1	65.3 ✓
	118			4.8	65.6 ✓
	+75			5.8	67.6 ✓
	+85			6.2	67.2 ✓
	+95		m	5.8	67.6 ✓
	119			5.8	67.6 ✓
TP	297	²⁹³ 16793	490		165.4 ✓
	+20			3.3	67.6 ✓
	+20			3.5	67.4 ✓
	+30			6.5	61.9 ✓
	+35			4.2	63.7 ✓
	121			3.7	64.2 ✓
	122			3.9	64.0 ✓
	123			4.2	63.7 ✓
	124			4.8	63.1 ✓
TP	360	175 16648	505		162.88 ✓
	125			4.3	62.2 ✓
	126			5.5	161.0 ✓

Enter Brush. (Edge of Creek)
in creek. *Elm & sugar alder &*
top Bank *Poplars.*

Bank of Cr.

Elev office

Bank of Cr.

1 creek 6' L + P. on stump near S 119+595
stump 1' to left

top Bank.

in creek.

top Bank.

124+60⁹ Leave Brush.

D 11 11 11 11

sta	+s	HI	-s	Rod	Elev
		166.98			
126+80				6.2	60.3 ✓
788				7.1	59.9 ✓
+88				8.7	57.8 ✓
127				5.9	60.6 ✓
720				6.0	60.5 ✓
+23				7.1	59.9 ✓
+30				6.0	60.5 ✓
+70				6.7	60.1 ✓
+92				6.1	60.4 ✓
128				6.0	60.5 ✓
+15				6.6	59.9 ✓
+32				9.0	57.5 ✓
BM			2.43		164.05 ✓
X		X		X	X X

top Bank of Cr.

on ice

Bottom of creek.

top Bank.

Elev of ice

Bank crk.

cross cr.

creek. 12' top 8' bottom estimate
 BM spike in 10" cedar 30' L sta 125+75

X X X X X

Sta	BS	HI	F.S	Red	Elev
BM	536	1837.1			178.05
86				1.8	78.6 ✓
85				4.8	78.6 ✓
84				4.0	78.4 ✓
83				5.0	78.4 ✓
82				5.0	78.4 ✓
81				4.9	78.5 ✓
580				4.2	79.2 ✓
79				4.5	78.9 ✓
78				4.0	79.4 ✓
T.P.	600	185.36	4.05		179.36 ✓
77				6.3	79.1 ✓
76				5.9	79.5 ✓
75				5.5	79.9 ✓
74				5.0	80.4 ✓
73				7.7	80.7 ✓
BM			2.08		183.25 ✓
72				4.0	81.4 ✓
71				1.5	83.9 ✓
T.P.	784	193.01	00.19	00.14	185.17 ✓
70				8.6	87.4 ✓
69				6.2	86.8 ✓
68				5.8	87.9 ✓
67				5.2	87.8 ✓
66				4.2	88.8 ✓

2070

179

25

Lat 19° 1'

Feb 25-1910 23

an spike sta 59100 MD.

spike in 6" pop 35" R sta 73
 leave brush and poplars

Enter Brush & pop

smaller

Sta	BS	HI	FS	Rod	Elev
		193.01			
65770				3.5	89.5 ✓
+55				7.5	88.5 ✓
BM			1.97		191.54 ✓
65				4.5	88.5 ✓
64				3.7	89.3 ✓
5 63				3.7	89.3 ✓
62				3.4	89.6 ✓
7.P	6.11	196.09	3.03		189.98 ✓
61				6.7	89.9 ✓
60				6.1	90.0 ✓
59				6.0	90.1 ✓
58				4.8	91.3 ✓
+85				1.6	91.5 ✓
57				7.0	89.1 ✓
+96				6.0	90.1 ✓
56				5.9	90.7 ✓
55				1.6	91.5 ✓
546				9.7	91.9 ✓
BM	5.13	197.74	3.98		192.61 ✓
51				6.7	91.3 ✓
53				6.1	91.6 ✓
52				6.3	91.4 ✓
51				6.2	91.5 ✓
50				5.8	91.9 ✓

L4 + N21

Beaver dam
top larger rock 40' L 5 to 6.5
Beaver Dam
Pot hole
Spike in Reference tree 10' L 59 + 252
Feb 27 1918

Pomase L
 May 1918
 Feb 27 1918

Sta	BS.	HI	FS.	Rod	Elev
		19774			
49450					
49				51	92.6 ✓
48				45	93.2 ✓
47				51	92.4 ✓
46				7.9	92.8 ✓
45				4.8	92.9 ✓
44				4.8	92.9 ✓
T.P.	6.75	²²⁶ 20000	4.99		193.25
43				6.7	93.3 ✓
42				6.7	93.3 ✓
41				4.8	93.2 ✓
40				6.0	94.0 ✓
39				7.8	95.2 ✓
38				7.6	95.9 ✓
37				9.9	95.6 ✓
BM.			2.55		197.45 ✓
36				4.1	95.9 ✓
35				3.3	96.7 ✓
4112				3.1	96.9 ✓
T.P.	2.80	⁶⁵⁸ 20658	2.22		197.76 ✓
34				9.1	97.5 ✓
33				8.6	98.0 ✓
32				7.9	98.7 ✓
31				6.9	100.2 ✓

Leave Bush

Enter Bush

open swp

on large Rock 100' R Sta 37

LAFNGC
Feb 27 1918

26

sta	BS.	HI	FS.	Rod	Elev
		20658			
30				5.7	009 ✓
29				5.0	01.4 ✓
28				4.6	02.0 ✓
27				4.5	02.1 ✓
26				4.1	02.5 ✓
25				3.9	02.7 ✓
24				3.8	02.8 ✓
TP	403	207.11 ³³	3.50		203.05 ✓
23				4.1	03.0 ✓
22	ω			4.6	02.5 ✓
21				4.5	02.6 ✓
20				4.5	02.6 ✓
19				4.7	02.4 ✓
18				3.0	04.1 ✓
TP	405	210.99 ³⁸	0.17		206.94 ✓
17				5.3	05.9 ✓
				6.7	04.3 ✓
+35				7.7	03.3 ✓
16				8.1	02.9 ✓
15				7.0	04.0 ✓
+80				6.9	04.1 ✓
+70				5.0	06.0 ✓
+60				7.6	03.4 ✓
14				6.3	04.7 ✓

ap ca swp.

Beaverdam

in ditch

in potato

15 21

For culvert see Transit Notes

ER W Highway on ER W 1/4 Lot 13

Feb 27 1918

Lot No 1

Cold day

Sta	BS.	HI	F.S.	Rod	Elev
		210.99			
13				4.1	049 ✓
12				5.7	053 ✓
11				5.7	053 ✓
10				5.5	053 ✓
T.P.	4.87	210.76 ²³	5.10		205.89 ✓
9				5.1	057 ✓
8				7.7	061 ✓
7				5.0	058 ✓
6				7.8	060 ✓
5				7.9	059 ✓
B.M.			4.11		206.65 ✓
4				4.8	060 ✓
3				4.5	063 ✓
2				4.3	065 ✓
1				4.0	068 ✓
0				4.0	068 ✓

open meadow

spruce in dry farm stump 40' Sta 5

LIA+No 5

Sta	BS	HI	FS	Red	Elev
BM	309	167.14			164.05
00				9.3	57.8 ✓
+8				9.3	57.8 ✓
+14				6.4	60.7 ✓
1				5.1	62.0 ✓
+23				5.7	61.4 ✓
+50				7.8	62.3 ✓
+55				7.8	62.3 ✓
+75				8.0	59.1 ✓
+80				5.1	62.0 ✓
2				5.2	61.9 ✓
3				4.2	62.9 ✓
4				3.1	64.0 ✓
5				2.7	64.4 ✓
TP	316	169.76	060		166.54 ✓
6				5.2	64.5 ✓
7				5.3	64.4 ✓
8				3.2	64.5 ✓
9				4.7	65.0 ✓
+60				4.5	65.2 ✓
+70				6.0	63.7 ✓
+85				5.0	64.7 ✓
10				4.6	65.1 ✓
+25				4.2	65.5 ✓
+30				4.8	64.9 ✓

 Pamuel
 W. McVay/Rod

 Lat No 5
 Feb 26 1918

28

on 10" Cedar 30' L Sta 125+75 M.D.

inck

inck

top Bank.

140 Enter Cedar Elm & fagn.

"

"

"

"

top Bank. creek 12' wide

Bottom cr.

top B.

top BK

cr. Bu. H

top BK.

top BK

inck

Feb 26, 1918. Lat Nos 29

Sta	BS	HI	FS	Rod	Elev.
		16970			
+40				4.0	65.7 ✓
11				3.5	66.2 ✓
T.P.	5.13	²⁴⁶ 172.14	267		16703 ✓
12				5.4	66.8 ✓
+95				5.0	67.2 ✓
13				6.1	66.1 ✓
+08				4.5	67.7 ✓
14				4.8	67.9 ✓
+80				4.6	67.6 ✓
+85				5.0	67.2 ✓
15				4.8	67.4 ✓
16				4.3	67.9 ✓
+9	460	⁷⁶ 173.10	366		16850 ✓
17				3.0	68.1 ✓
18				onice 3.2	67.9 ✓
				onice 4.3	68.5 ✓
19				onice 5.0	68.1 ✓
20				5.3	67.8 ✓
21				3.1	70.0 ✓
22				2.9	70.2 ✓
23				2.7	70.4 ✓
24		¹²⁹		2.2	70.9 ✓
T.P.	330	174.39	20.1		171.09 ✓
21				3.5	68.9 ✓

top BR.

11 + 70° Leave turn Elk and Cedar

top BR.

at Bottom.

top BR.

in road winter Road.

in small cut. Enter top of old r.s. & poplars

End of off take. Leave Brush

in ditch

top BR.

in off take 5 1/2' Top 25' Bottom

Bottom off take on ground.

top BR.

" " 5 1/2' top 3' Bottom

" "

" "

Enter on Bottom of off take

Lat N 95
Feb 26 1918

30

sta	BS.	HI	F.S.	Rod	Elev
		174.39			
25				35	70.9 ✓
26				35	70.9 ✓
27				34	71.0 ✓
28				33	71.1 ✓
29				34	71.0 ✓
30				30	71.9 ✓
+70 ⁶					
+78				32	69.2 ✓
BM.			209		172.30 ✓
31	3			32	71.2 ✓
32				2.6	71.5 ✓
33				2.2	72.2 ✓
+25				2.4	71.5 ✓
TP.	420	176.19 ¹⁸⁰	240		171.99 ✓
34				4.4	71.5 ✓
35				4.5	71.7 ✓
36				4.4	71.8 ✓
37				4.1	72.1 ✓
38				4.3	71.9 ✓
39				4.4	71.8 ✓
10				4.1	72.1 ✓
11				4.2	72.0 ✓
12				3.8	72.1 ✓
13				3.9	72.3 ✓

top RR.

" "

" "

" "

" "

a 24" x 24' I.P. to be installed. Northey has
both of off take ^{one} already ordered
split in tale pole. 8' R 30 + 57.3
for Road

top RR

TP. RR. 5' top 3" Bottom

" "

" "

top RR.

" "

" "

" "

" "

" " 5 top 3 1/2 Bottom

" "

follow off take

Sta	BS	HI	FS	Rod	Elev
		176.19			
#P	194	177.63 ¹⁴	3.00		173.19
44			5	53	72.3 ✓
45				5.5	72.1 ✓
46				4.9	72.7 ✓
47				5.3	72.3 ✓
48				4.8	72.8 ✓
49				4.5	73.1 ✓
50				4.5	73.1 ✓
51				1.7	72.9 ✓
+20				3.7	72.9 ✓
BM.			3.57		174.06 ✓
450				5.0	72.6 ✓
52				4.9	72.7 ✓
53				5.1	72.5 ✓
54				4.2	73.4 ✓
TIP	196	178.19 ⁵⁶	3.90		173.73 ✓
55				5.0	73.2 ✓
56				5.1	73.1 ✓
57				5.2	73.0 ✓
58				4.6	73.6 ✓
59				4.8	73.4 ✓
60				5.0	73.2 ✓
61				5.1	73.1 ✓
62				4.9	73.3 ✓

Pomasec
W McVay

Lat Nos

31

171.1 Elev of Bottom of off take. Sta 43
top BM
" "
" "
" "
" "
" "
" "
" " Beginning of off take
center of EB W Highway N line sec 9
split in tele pole. 60' L sta 51

For BM opposite 59 see page 32

Level checked by Zuercher Sta. 1918

Sta	BS.	HI	FS.	Rod	Elev
		17819			
63				4.7	73.5 ✓
61				4.9	73.8 ✓
65				4.7	73.5 ✓
66				4.9	73.3 ✓
Line Extended to sta 73					
BM			334		17985
	X		X		
Pegging East to sta 22 of Lat No 1					
BM	5.24	17930			17406
TP	4.72	18326	0.96		17834
BM	3.18	18212	4.32		17894
22+04.9	Lat No 4			5.9	76.2 ✓
22				4.5	77.6 ✓
21				4.1	78.0 ✓
20				4.8	77.3 ✓
19				4.8	77.3 ✓
18				4.8	77.3 ✓
17				4.8	77.3 ✓
16				5.0	77.1 ✓
15				5.0	77.1 ✓
14				4.9	77.2 ✓
13				4.9	77.2 ✓
12				4.2	77.9 ✓

Lat No 5

32

(Green Rodman Levels on Lat 2, 3, 4, 5 -
may not be very accurate.)

Note at time of construction it may
be necessary to extend ditch about
700' longer. Level ground.

Split in 2 1/2" Drydam: 55' R Sta 59

split in tele pole 60' L Sta 51.

BM split in tele pole 30' L Sta 22+00 Lat No 4
in side ditch of Road LAT No 4

open

Lat No 4

Sta	BS.	Height	F.S.	Rod	Elev
		18212			
T.P.	287	181 ⁵⁹ 53	3.96		178.66 ✓
11				4.4	77.1 ✓
10				4.2	77.3 ✓
9				4.7	76.8 ✓
8				4.9	76.6 ✓
7				4.8	76.7 ✓
B.M.			2.18		179.05 ✓
6+60				5.3	76.2 ✓
6				6.3	75.2 ✓
5 ²³				5.9	75.6 ✓
4				6.4	75.1 ✓
3				6.3	75.2 ✓
2				6.5	75.0 ✓
T.P.	346	178 ²⁷⁷ 76	6.23		1753.0
1				4.3	79.5 ✓
00				4.1	79.7 ✓
1				4.5	79.3 ✓
2				4.5	79.3 ✓
3				4.4	79.4 ✓
4				4.1	79.7 ✓
5				4.0	79.8 ✓
6				3.8	75.0 ✓
7				3.9	74.9 ✓
8				4.1	74.9 ✓

Feb 26 1918

33

open sump.

split in 4" pop 10' to sta 7+15

Sta	BS.	HI	FS.	Rod	Elev.
		177.76			
TP.	363	178.85	354		175.22
9				4.5	74.9 ✓
10				4.7	74.2 ✓
10+90					
11				3.9	75.0 ✓
+90					
12				4.8	74.1 ✓
B.M.			179		177.06 ✓
13				4.8	74.1 ✓
14				4.8	74.1 ✓
15				4.6	74.3 ✓
16				5.2	73.7 ✓
17				4.4	74.5 ✓
TP.	354	178.73 ⁷²	394		174.89
18				4.6	73.8 ✓
19				4.4	74.0 ✓
20				4.5	73.9 ✓
21				4.7	73.7 ✓
22				4.7	73.7 ✓
23				4.3	74.1 ✓
24				4.1	74.3 ✓
25				4.7	73.7 ✓
26				4.4	74.0 ✓
27				4.1	74.3 ✓

Lat No 4
Feb 26 1915

39

Enter tag alders.

Leave tag alders.

Spill in 5" pop 50' R Sta 12+00

Open SWP.

Sta	B.S.	HI	F.S.	Mod	Elev
		17843			
T.P.	380	17861	362		179.81 ✓
28				4.5	79.1 ✓
+90					
29				4.9	73.7 ✓
30				4.1	79.2 ✓
+220		End Lat No 4		4.4	173.97 ✓
B.M.				3.23	175.38 ✓
					176.05 ✓
		X	X	X	^ X
		Lat No 3			
B.M.	238	18182			179.44 ✓
28+00				4.3	177.5 ✓
27				4.8	79.0 ✓
26				5.1	76.7 ✓
+60					
25				4.5	77.3 ✓
24				4.8	77.0 ✓
23				4.5	77.3 ✓
22				5.3	76.5 ✓
T.P.	340	18122	400		177.82 ✓
21				3.4	77.8
20				4.4	76.5 ✓
20				4.3	76.9 ✓
19				4.9	76.3 ✓

Lat No 4
Feb 26 1918

35

Enter Brush

17464 M.D.
17397 Lat Levels
67 Diff
= Sta 88+99.9 Main Ditch
Spike in snag 100' R Sta 30
to check with M.D. Levels

B.M. Spike in 4" pop 100' R Sta 27+00 Lat No 3
28+00 End Lat No 3 = Sta 61+00 M.D.

Leave small brush.

Enter Brush

Sta	BS.	HI	F.S.	Red	Black
		181.22			
18				4.5	78.7 ✓
17				4.7	76.5 ✓
16				5.2	76.0 ✓
15				5.3	75.9 ✓
14				4.4	76.8 ✓
13				5.1	76.1 ✓
12				4.9	76.3 ✓
11				4.3	76.9 ✓
TP.	345	181.27 ⁰⁵	3.40		177.82 ✓
10				4.4	76.8 ✓
9				4.4	76.7 ✓
8				4.4	76.7 ✓
7				4.4	76.7 ✓
6				5.0	76.3 ✓
5				4.7	76.6 ✓
4				4.8	76.5 ✓
3				4.6	76.7 ✓
2				4.1	76.9 ✓
1				5.0	76.3 ✓
00				4.6	76.7 ✓
BM			267	178.60	

snowing hard

spike top stamp Encl Lat No 3.
20' L 5490400

Sta	BS	HI	FS	Red	Elev
	320	18509			18189
00				4.6	805.4 ✓
1				4.7	804 ✓
2				5.0	801 ✓
3				4.6	805 ✓
+77				4.9	802 ✓
4				4.7	809 ✓
5				5.2	799 ✓
6				4.8	803 ✓
7				4.5	806 ✓
8				4.7	809 ✓
9				4.9	807 ✓
10				4.9	807 ✓
TP	353	18528	334		18173 ✓
11				4.2	811 ✓
12				4.8	805 ✓
13				4.7	806 ✓
14				5.1	802 ✓
15				5.1	802 ✓
16				4.5	808 ✓
BM			240		18288 ✓
17				3.9	819 ✓
18				2.2	831 ✓

Lat No 2

37

T.P. top Hubsta 43+41.9 M.D. = 00 Lat No 2
 brush
 brush
 open
 Enter small brush & scattering small
 dry tamarcks.
 Note Lat No 2 is 20' E of section
 "
 "
 "
 "
 Leave Brush
 Top Large Rock 75' E Sta 14
 Enter Brush on Left only

Sta	BS.	HI	FS.	Rod	Elev
		185.28			
TPC	11.54	194.92 ^{96.4}	190		183.38
19				9.7	85.2 ✓
+75					
20				8.1	86.8 ✓
21				5.4	89.5 ✓
+126				50	89.9 ✓
22				4.1	90.8 ✓
23				38	91.1 ✓
24				2.3	92.6 ✓
25				1.7	93.2 ✓
T.P	12.63	206.76 ^{185.4}	109		193.83 ✓
26				12.5	94.0 ✓
27				11.0	95.5 ✓
28				9.7	96.8 ✓
29				7.5	99.0 ✓
30				5.8	00.7 ✓
+0.9				4.1	00.9 ✓
+24				40	02.5 ✓
B.M			1.12		2020.4 ✓
+35				62	00.3 ✓
31				52	01.3 ✓
32				50	01.5 ✓
33				43	02.2 ✓
34				45	02.0 ✓

Lat No 2
Feb 26 1915.

38

tag alder & brush on both sides

leave line 20' from sec. and angle to R.

leave brush 23+80.0

inside ditch of Road
 sec 14 trans. 1100 ft. for 20' vert
 center of E & W Road N line sec 10
 split in tele pole 50' R Sta 30
 inside ditch

County Ditch No. 13.

A general description of the proposed starting point, route, and terminus of said ditch is as follows:

Commencing at or near the south quarter corner of Section 11, Township 140 North, Range 27 West of the 5th P. M., running thence northwesterly and westerly through Sections 11, 10, 9 and 8 in said Township 140, Range 27, to Inguadona lake, together with all necessary laterals to properly drain the land contiguous to such ditch.

Sta	BS	HI	FS	Rod	ELAV
		206.46			
35				4.3	022 ✓
TP	3.40	206.74	3.10		203.36 ✓
36				4.4	022 ✓
37				4.7	021 ✓
38				4.5	023 ✓
39				4.8	020 ✓
40				4.9	019 ✓
41				4.6	022 ✓
42				4.3	025 ✓
43				4.3	025 ✓
44				4.1	027 ✓
TP	5.51	208.49	3.78		202.98 ✓
45				6.3	02.2 ✓
46				6.0	02.5 ✓
47				6.2	02.3 ✓
48				6.1	02.4 ✓
49				5.0	03.5 ✓
435				5.2	03.3 ✓
415				5.7	02.6 ✓
460				6.4	02.1 ✓
50				4.7	03.8 ✓
BM			1.96		206.53 ✓
51				5.0	03.5 ✓
52				4.2	04.3 ✓

Lat No 2. Feb 26 1917

39

Open SWP.

Enter small brush

Leave " "

Cross small draw

Spine in ^{8'} white pine 25' R sta 50
51+70 to 53 small brush

Sta	BS	HI	FS	Rod	Elev
		208.19			
53				1.0	09.5 ✓
T.P.	3.85	208.89 ⁴⁰	3.95		205.09 ✓
57				4.9	09.0 ✓
55				7.6	09.3 ✓
56				5.0	09.9 ✓
57				1.8	09.1 ✓
58				4.8	09.1 ✓
59				4.9	09.0 ✓
60				4.5	09.7 ✓
61				4.9	09.0 ✓
62				4.7	09.2 ✓
B.M.		2.88			206.01 ✓

X X X X X X
 Soundings, Barr's Lake.

W

S

+40 2' of ice to mud. took 6 soundings. No solid

3

2

1

0

same as sta 3+40 very little water

E

Lat N 22
 Feb 26 1915

40

open swp.

Not

Note BM.

End of line

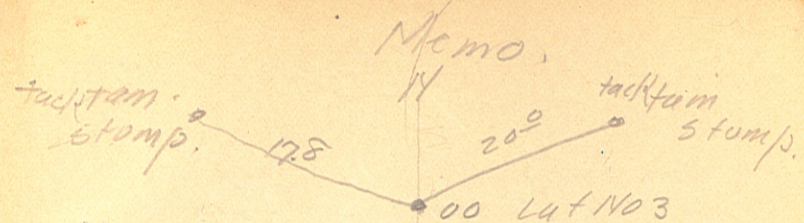
✓ speaking "dry turn" 100' sta 57

ice Elev 197.1

Water Elev 195.6

bottom

and holed bottom



6
17) 20 (14
29
60
64

8960
15.32
77.28

180 17940
5958
12002

105 27.00 } 26
2.10

197.1
578
393
56108W
3315
17940
8537

895 8960
786 423
10.9 8537

80.1
70.2
9.9

W W 19 20

32/300 10 29

26
927 7469 60
796 58240 67960
89.3 9725 17929
7465 302
1789 698
9147

DISTANCES FROM CENTER OF ROADWAY FOR CROSS-SECTIONING.

ROADWAY 14 FEET WIDE. SIDE SLOPES 1½ TO 1.

FOR SINGLE TRACK EMBANKMENT.

	0	.1	.2	.3	.4	.5	.6	.7	.8	.9	
0	7.0	7.2	7.3	7.5	7.6	7.8	7.9	8.1	8.2	8.4	0
1	8.5	8.7	8.8	9.0	9.1	9.3	9.4	9.6	9.7	9.9	1
2	10.0	10.2	10.3	10.5	10.6	10.8	10.9	11.1	11.2	11.4	2
3	11.5	11.7	11.8	12.0	12.1	12.3	12.4	12.6	12.7	12.9	3
4	13.0	13.2	13.3	13.5	13.6	13.8	13.9	14.1	14.2	14.4	4
5	14.5	14.7	14.8	15.0	15.1	15.3	15.4	15.6	15.7	15.9	5
6	16.0	16.2	16.3	16.5	16.6	16.8	16.9	17.1	17.2	17.4	6
7	17.5	17.7	17.8	18.0	18.1	18.3	18.4	18.6	18.7	18.9	7
8	19.0	19.2	19.3	19.5	19.6	19.8	19.9	20.1	20.2	20.4	8
9	20.5	20.7	20.8	21.0	21.1	21.3	21.4	21.6	21.7	21.9	9
10	22.0	22.2	22.3	22.5	22.6	22.8	22.9	23.1	23.2	23.4	10
11	23.5	23.7	23.8	24.0	24.1	24.3	24.4	24.6	24.7	24.9	11
12	25.0	25.2	25.3	25.5	25.6	25.8	25.9	26.1	26.2	26.4	12
12	26.5	26.7	26.8	27.0	27.1	27.3	27.4	27.6	27.7	27.9	13
14	28.0	28.2	28.3	28.5	28.6	28.8	28.9	29.1	29.2	29.4	14
15	29.5	29.7	29.8	30.0	30.1	30.3	30.4	30.6	30.7	30.9	15
16	31.0	31.2	31.3	31.5	31.6	31.8	31.9	32.1	32.2	32.4	16
17	32.5	32.7	32.8	33.0	33.1	33.3	33.4	33.6	33.7	33.9	17
18	34.0	34.2	34.3	34.5	34.6	34.8	34.9	35.1	35.2	35.4	18
19	35.5	35.7	35.8	36.0	36.1	36.3	36.4	36.6	36.7	36.9	19
20	37.0	37.2	37.3	37.5	37.6	37.8	37.9	38.1	38.2	38.4	20
21	38.5	38.7	38.8	39.0	39.1	39.3	39.4	39.6	39.7	39.9	21
22	40.0	40.2	40.3	40.5	40.6	40.8	40.9	41.1	41.2	41.4	22
23	41.5	41.7	41.8	42.0	42.1	42.3	42.4	42.6	42.7	42.9	23
24	43.0	43.2	43.3	43.5	43.6	43.8	43.9	44.1	44.2	44.4	24
25	44.5	44.7	44.8	45.0	45.1	45.3	45.4	45.6	45.7	45.9	25
26	46.0	46.2	46.3	46.5	46.6	46.8	46.9	47.1	47.2	47.4	26
27	47.5	47.7	47.8	48.0	48.1	48.3	48.4	48.6	48.7	48.9	27
28	49.0	49.2	49.3	49.5	49.6	49.8	49.9	50.1	50.2	50.4	28
29	50.5	50.7	50.8	51.0	51.1	51.3	51.4	51.6	51.7	51.9	29
30	52.0	52.2	52.3	52.5	52.6	52.8	52.9	53.1	53.2	53.4	30
31	53.5	53.7	53.8	54.0	54.1	54.3	54.4	54.6	54.7	54.9	31
32	55.0	55.2	55.3	55.5	55.6	55.8	55.9	56.1	56.2	56.4	32
33	56.5	56.7	56.8	57.0	57.1	57.3	57.4	57.6	57.7	57.9	33
34	58.0	58.2	58.3	58.5	58.6	58.8	58.9	59.1	59.2	59.4	34
35	59.5	59.7	59.8	60.0	60.1	60.3	60.4	60.6	60.7	60.9	35
36	61.0	61.2	61.3	61.5	61.6	61.8	61.9	62.1	62.2	62.4	36

Calculated by Julien A. Hall, M. Am. Soc. C. E.