

Cass. Lake - - Bernidja
Road

Transit Book No 1.

DIETZGEN
17

ENGINEERS'
FIELD BOOK
No. 400

Transit & Level Notes
Job # 2007.

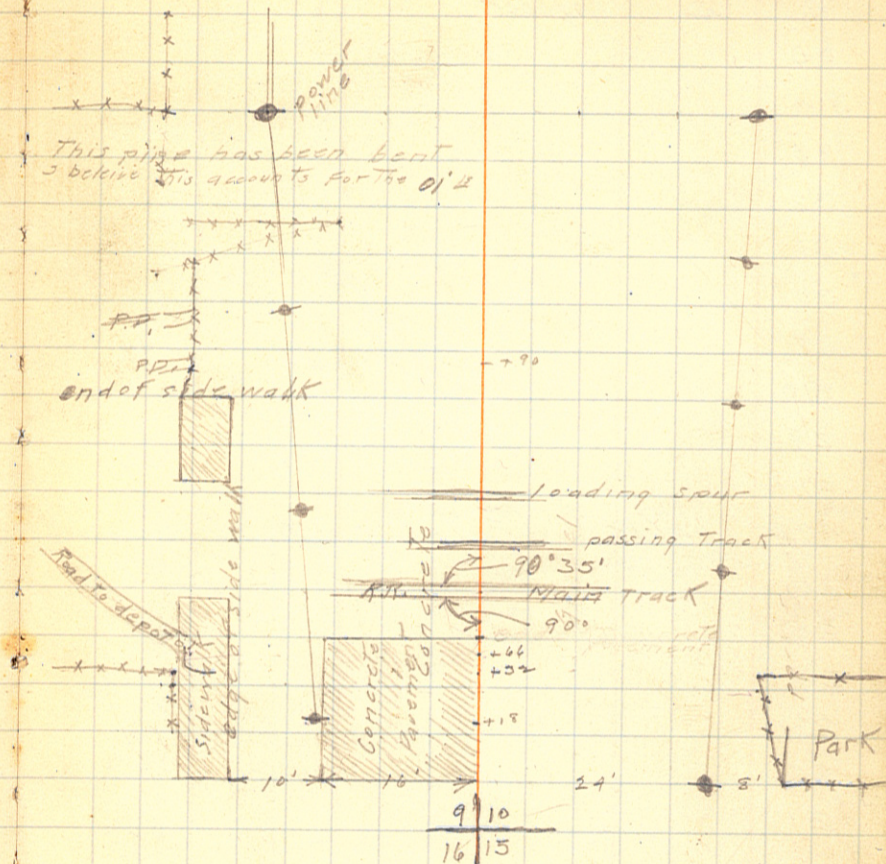
Var 8°15'

Weather
Cool-Cloudy

5-10-20
Geo. Westman
& O.G. Pugh
Roy Peterson

Sta.	Δ	Mag. bear
13		N 0°30' W.
+212	0° d. l.	1/16 cot. E 1/16 S.W. 1/4 Sec. 9. Iron pipe
12		
11		
10		
9		
8		
7		
6		
+48		
+15		
5		
4		
3		
2		
1		
0+00		Non Sec. line

Start at sec. cor $\frac{9}{10}$
 $\frac{16}{15}$



Sec. Cor. in center of man hole

26 + 42.8
 13 21

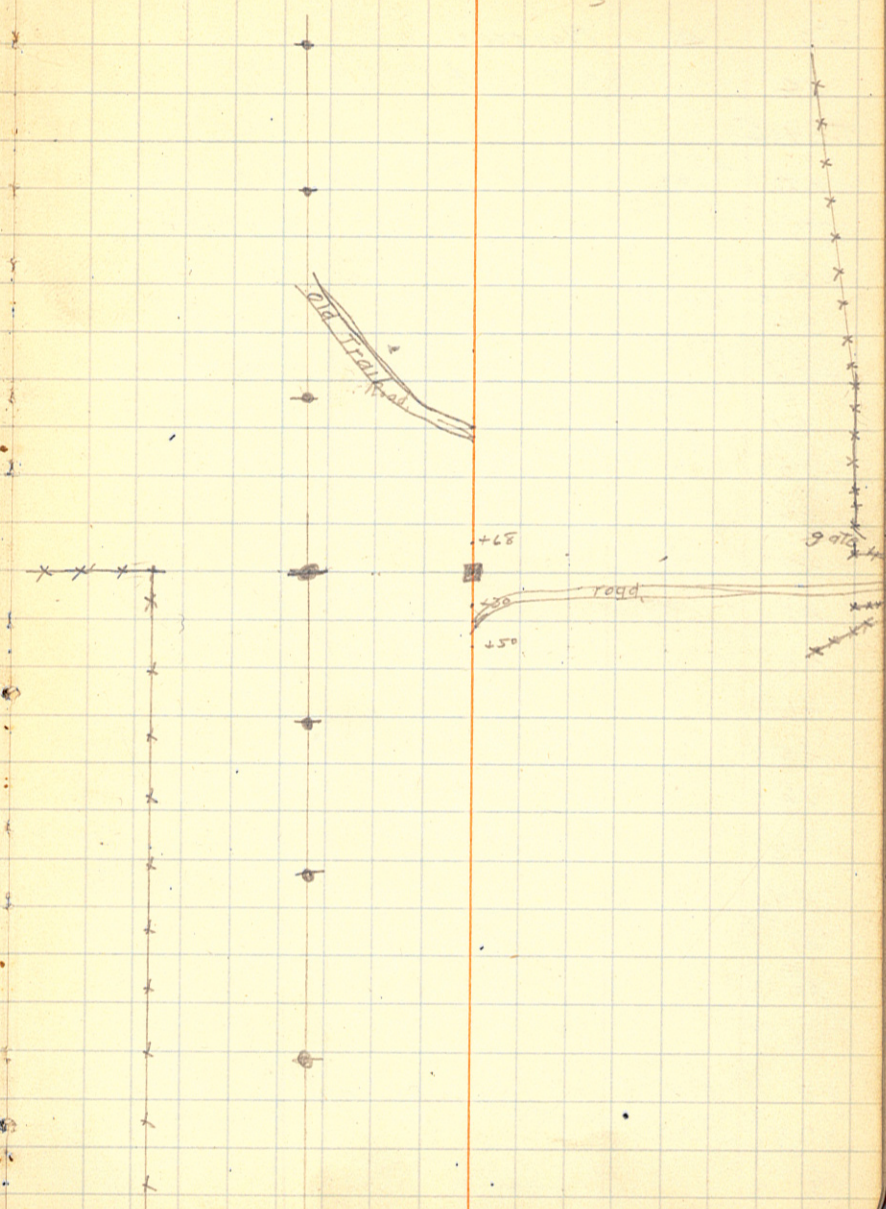
 39.5.8

2

Sta. Δ Mag. bear

35
 34
 33
 32
 31
 30
 29
 +70
 28
 27
 +42.5
 26
 25
 24
 23
 22
 21
 20
 19
 18
 17
 16
 15
 14

1/4 Cor. E 1/4 Cor. Sec. 9 iron pipe



E

Sta. Δ Mag. bear.
54 589°30' W

P.T. + 96.5

+50 45°30'

Δ 90°59' L

4 3

52+862 Sec cor

53 38°45'

P.L. 52+862

9 10

+50 31°30'

29°6

52 24°15'

T = 203.2

+50 17°00'

Lc = 313.7

51 9°45'

2°30'

P.L. + 82.8

50

49

48

47

46

45

44

43

42

41

40

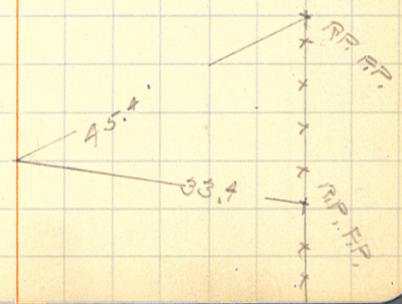
39

38 0°01' R. 2" Jack pine trap

37

36

Sandy soil



5-11-20
G. Weetman
O.A. Rush
E. Roy Peterson

Sta. Δ Mag. bear.

77

76

75

74

73

72

71

70

69

68

67

66

65

64

63

62

+ 303 P.R.T. W

61

60

59

58

57

56

55

There are a few stamps in the R.W. here →

←

Start 5-11-20

Sta. Δ : Mag. bear

100

99

98

97

96

95

94

93

P.O.T.

92

91

90

89

88

87

86

85

84

83

82

81

80

79

+373 0°16' R N89°30' W 1/4 Cor. Sec. 4.

78

P.P. in 10" stamp

51.5

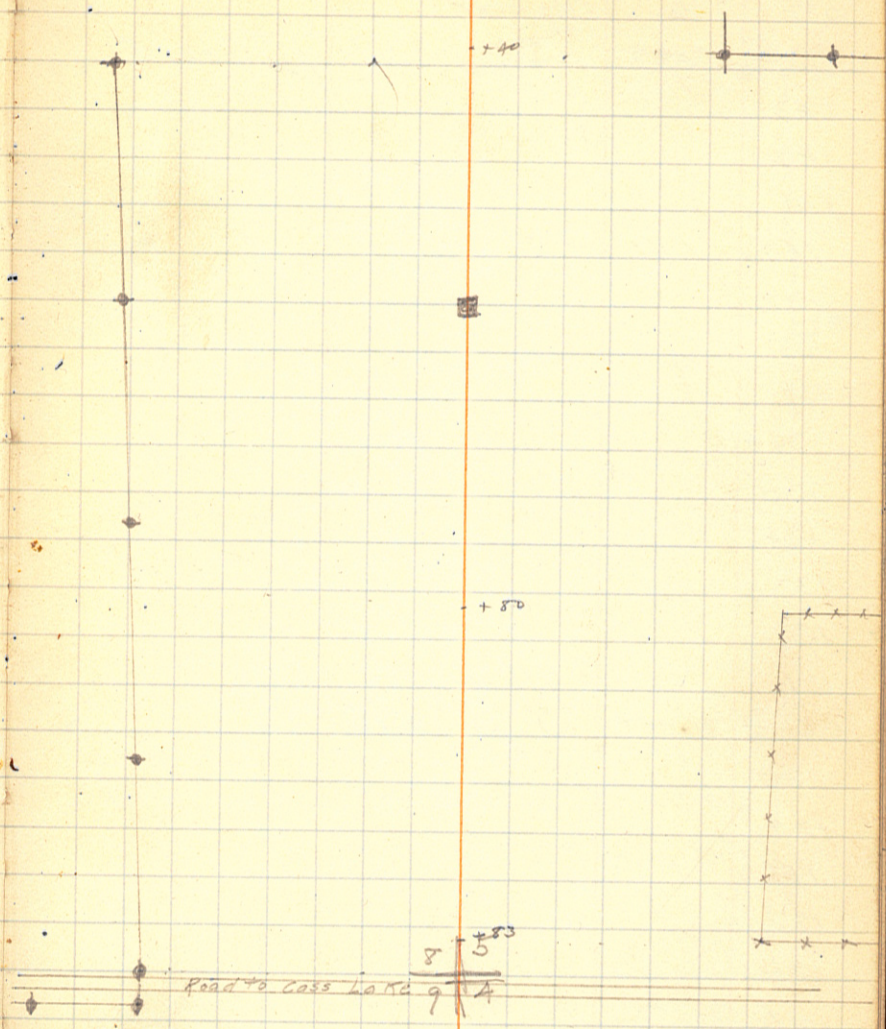
70.4

P.P. in 6" stamp

17
stamp

← 70° 00' 30" E

Sta.	Mag. bear.
122	
121	
120	
119	
118	N86°W
+59.8	0°-02'L 1/16 Cor S 1/16 S.E. 1/4 Sec. 5.
117	
116	
115	
114	
113	
112	
111	
110	
109	
108	
107	
106	
105	N86°W
+51.9	3°34'R Sec. 4 or.
104	
103	
102	
101	

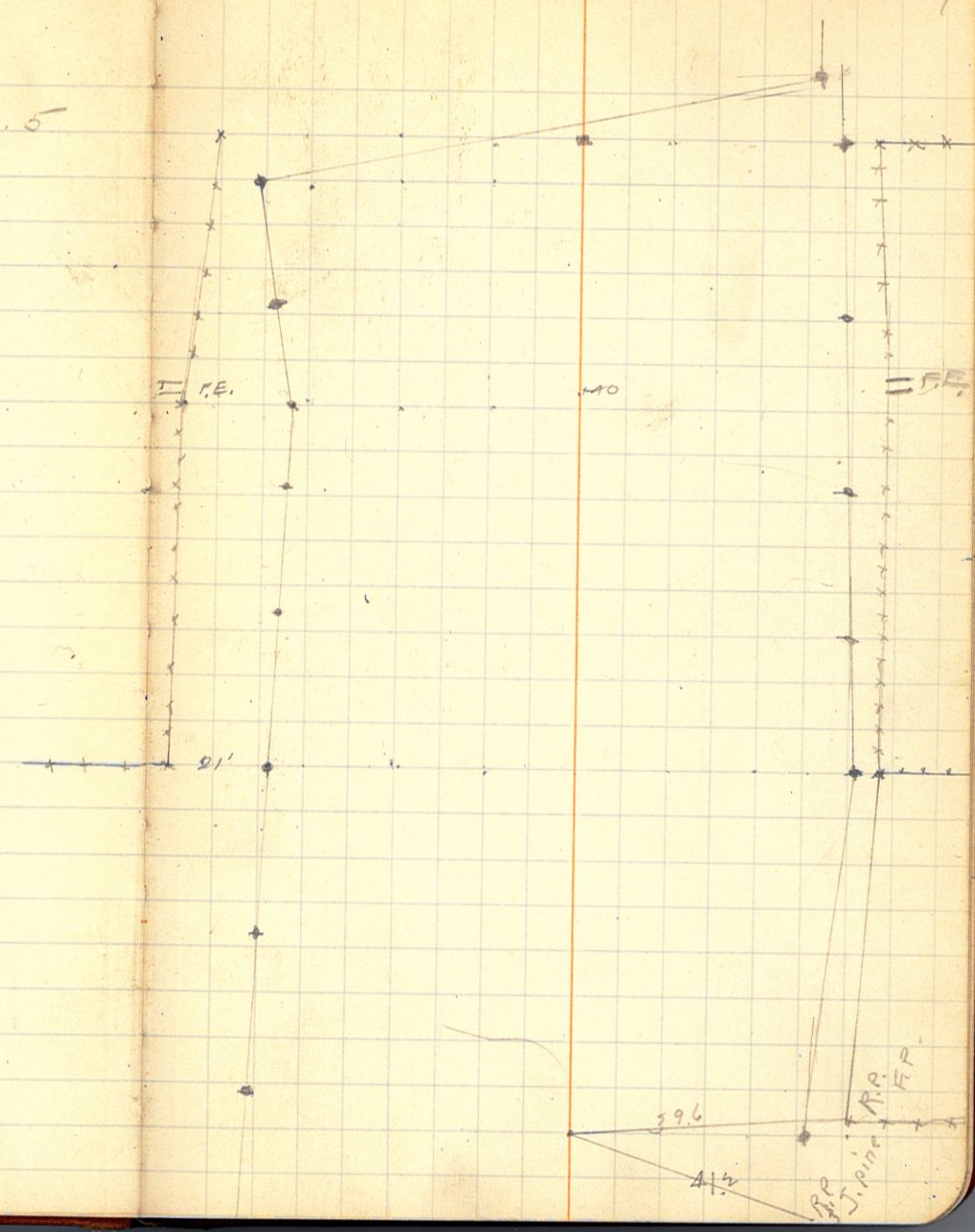


Sta. Δ Mag. bear
+735 0°03'L 5 1/10 S.W. 1/4 Sec. 5

- 143
- 142
- 141
- 140
- 139
- 138
- 137
- 136
- 135
- 134
- 133
- 132
- 131
- 130
- 129
- 128
- 127
- 126
- 125
- 124

+663 0°02'R N86°W
S 1/4 Sec. 5

+414 P.O.T.
123



Sta. Δ Mag bear

162

161

160

159

158

PT. +90°

+50

157

+50

156

+50

155

P.L. +86.4

154

153

152

151

150

149

148

147

146

145

144

14° 06'

38° 13'

30° 58'

23° 43'

16° 28'

9° 13'

10° 58'

N

P.L. 156 + 79.4

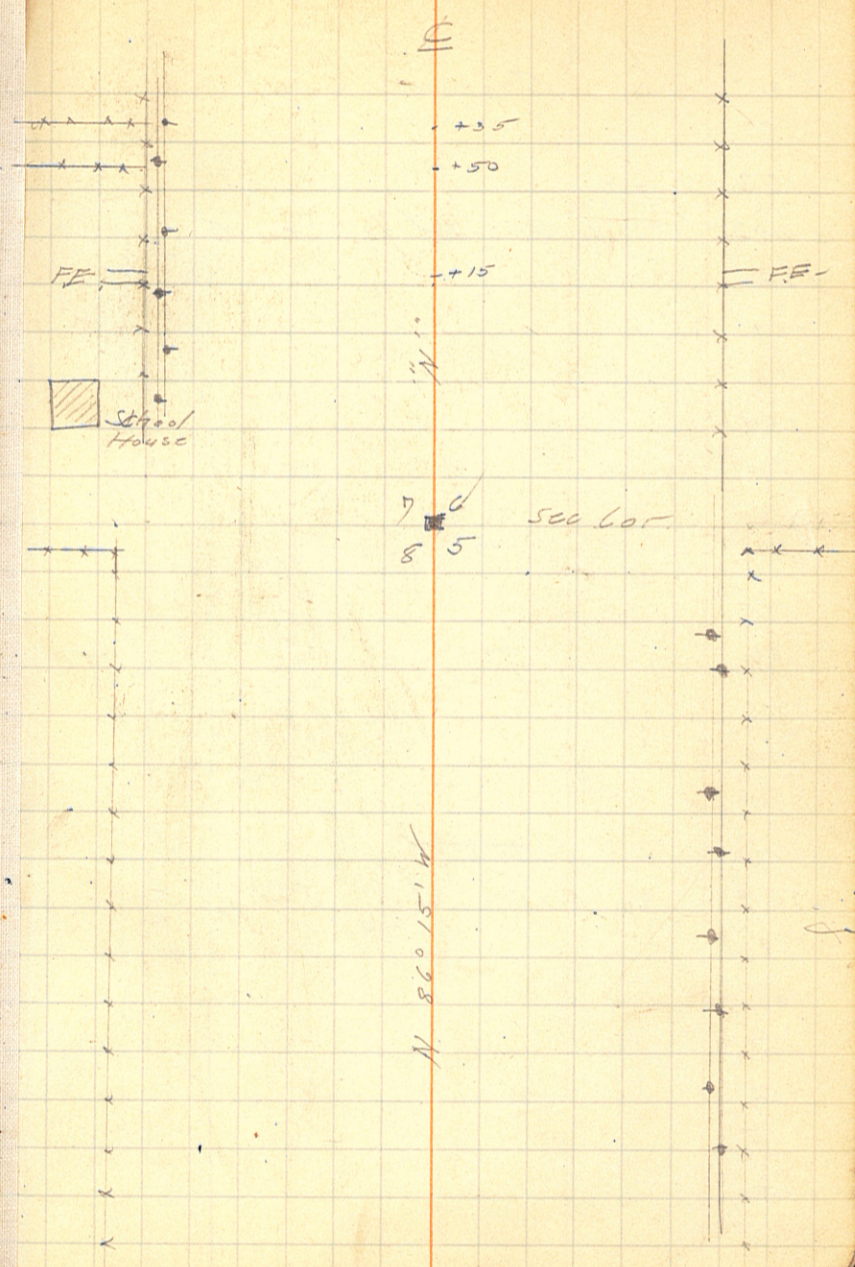
Δ 88° 02' R

29° C

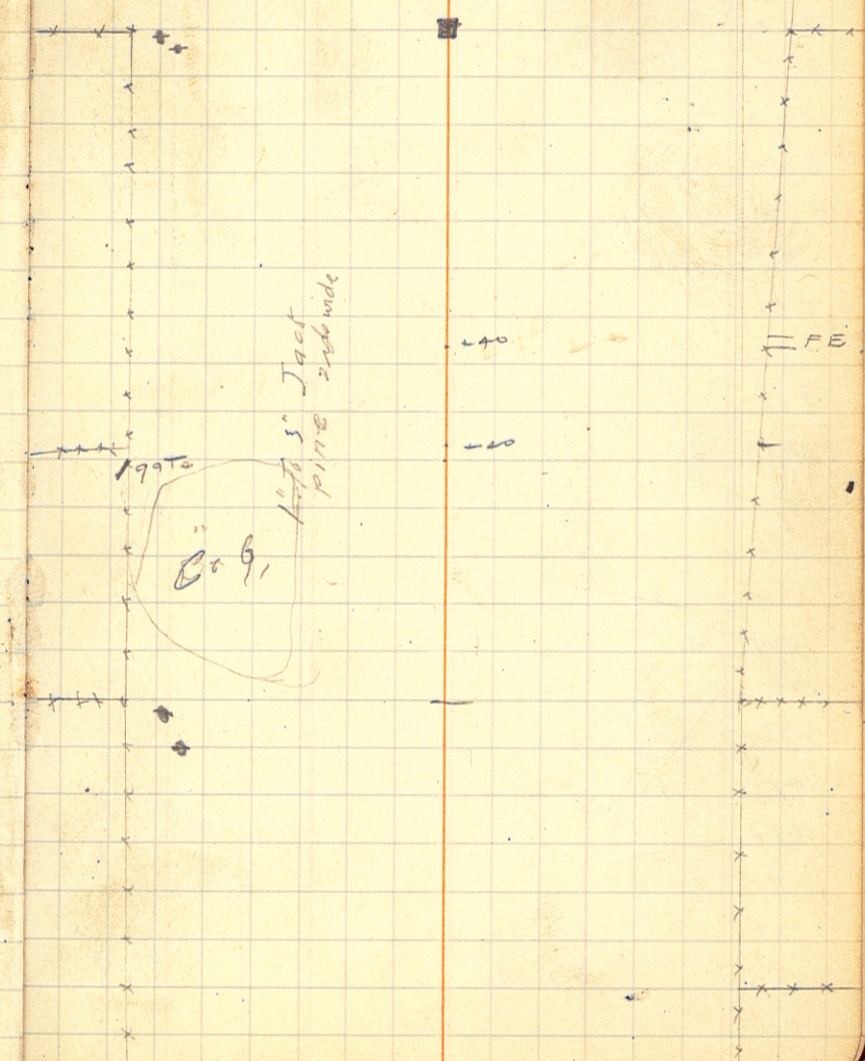
T = 193.4

L.C. = 303.6

N 86° 15' W



ST	Sta.	Mag. bear.
1	184	
1	183	
1	+ 432	1010' L N11°00'W 1/4 Sec. 5
1	182	
1	182	
P.T.	180	
+	179	
1	178	
+	177	
1	176	
+	175	
1	174	
P.C.	173	
1	172	
1	171	
1	170	
+	19.9	1/16 Cor. S. of T. W. 1/16 SW 1/4 5
1	169	
1	168	
1	167	
1	166	
14	165	
14	164	
14	163	



ST
 1
 1 +13.8
 1 206
 1 205
 1 204
 P.T. + 203
 + 202
 1 + 39.4 Pat.
 + 201
 1 200
 + 199
 1 198
 P.C. + 197
 1 196
 1 195
 1 194
 1 193
 1 192
 1 191
 1 188
 1 189
 1 187
 1 187
 1 186
 1 185

Sec. Cor

Pat.

