

BOY RIVER ROAD

(6)

TRANSIT-LEVEL No 1

(6)

FIELD BOOK

361

43

INDEX.

	Page to Page
Time Sheet	Back of book
Rps. Back of Book.	
Transit Notes from 00 to 179+65.5	1-8
level " " 00 to 56	9-21
" " " 56 - 172	17-2
" " " 172 - 174+65.5	29
From sta 19+35.5 page 14 change of line DUC WEST to N 1/4 cor sec and thence south to Bridge	14-16
Levels on change of line	23-26
Off take Level & Transit Notes	27-28
Sketch of Survey	29
For corrected angles and distances see page	30
Transit Notes sta 174 to 405	32-41.
Level Notes 174-405	41-55.
Miscel. Notes + Time sheet	56.
Reference points	57.

21

20

+35.5 117°15' R 147°15' W

19

18

17+00 0

16

15

14

13

12+00 POT.

11

10

9

7

6

+27

5

4

0

2

1

+15

00 089°58' West

80 Yards

6-13-19.

J.F.P.

S. J.

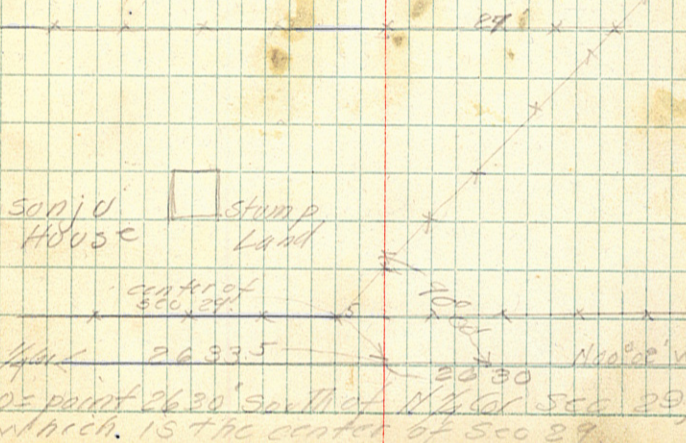
Chas W.

Note change of \times 50 \times 30 line see page 14

500 tracks

Angles may be way off on account of settling in water and very soft ground

Stamp spruce & fir
log cedar

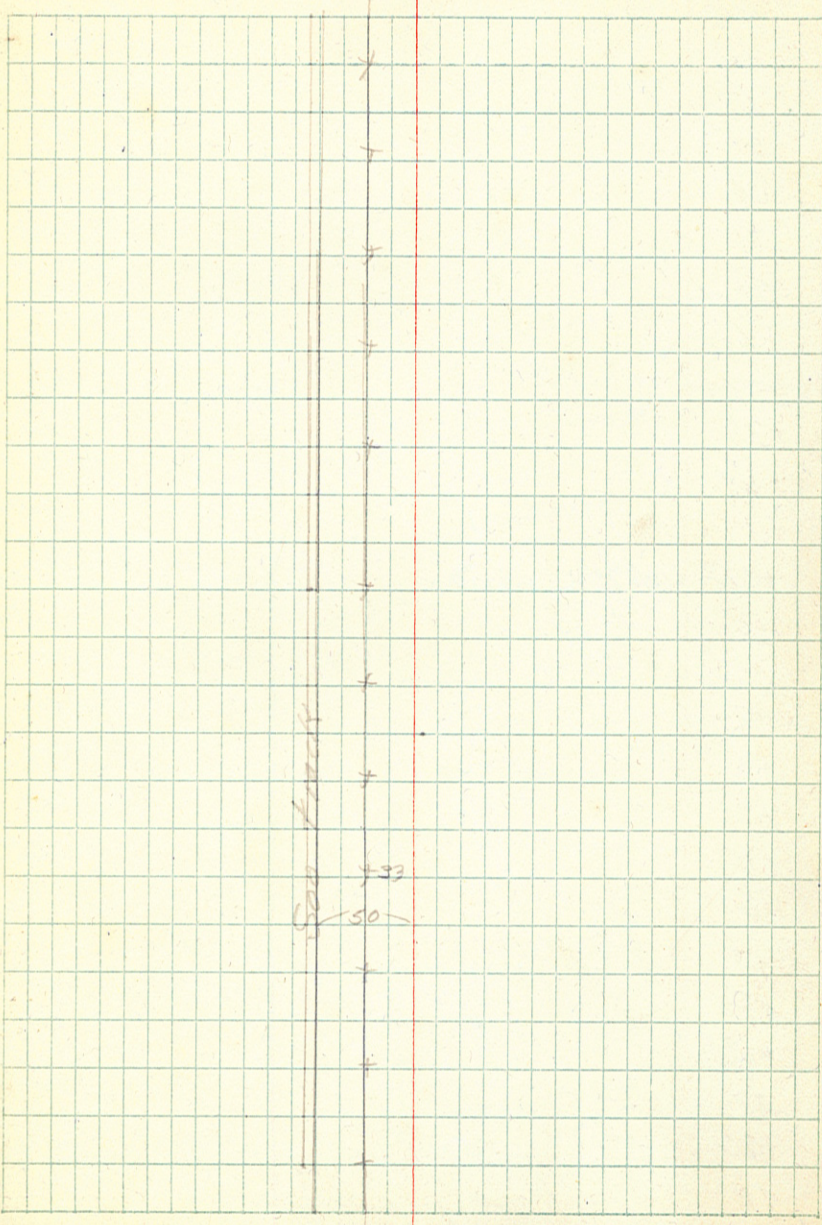


Point 26335
N 26°30' W
N 50°00' W
700 feet
700 feet
center of Sec 29
Stamp House
Stamp Land

4-17-19.

2

43
 44
 43
 42
 41
 40
 39
 38
 37
 36
 35
 34
 33
 32
 31
 30
 483° POT. N47°15'W
 29
 28
 27
 26
 25
 24
 23
 22



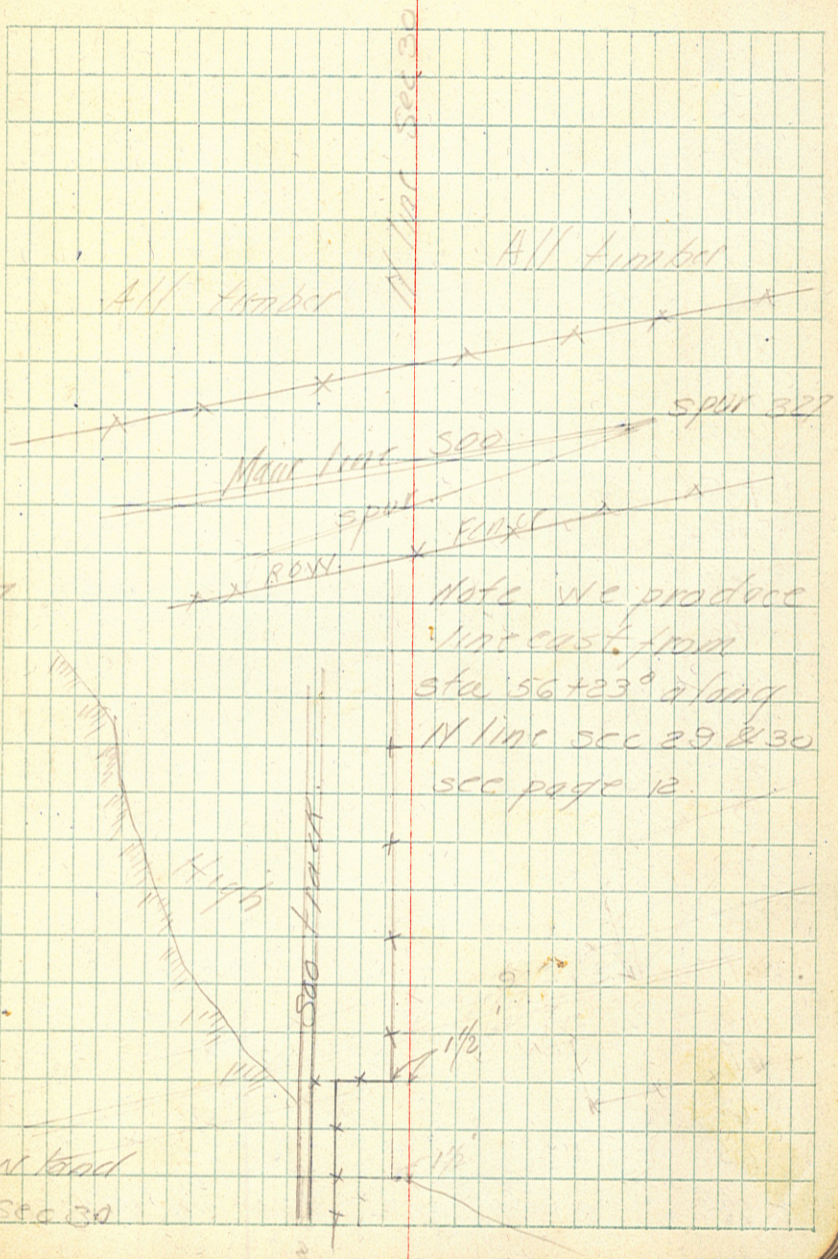
6-15-19

3

- 64
- 63
- 62
- 61
- 60
- 59
- 58
- +55
- 57
- +92
- +69
- +27
- +23°
- 56
- 55
- 54
- 53
- 52
- 51
- 50
- 49
- 48
- +08°
- 47
- +86°
- 46

D46°2' L 586°33' N North line Sec 30 143 27

Pot used as A-90 46' L bot find low lead
so product line to N line Sec 30



- 87
- 86
- 85
- 84
- 83
- 82
- 81
- 80
- 79
- + 183 POT
- 78
- 77
- 76
- 75
- 74
- 73
- 72 - POT
- 71
- 70
- 69
- 68
- 67
- 66
- 65

// COR
10

+ 683 $\beta 1^{\circ} 33' L$ $585^{\circ} 20' W$ // A COR Bot Sec 19 & 30

Lays 3.5' to Right

Enter Jam Soap

Lays 0.2 to South

+50^o

109

108

107

106 P.O.T.

105

104

+97^o

$\frac{1}{16}$ cor marked 1320' by J. Flynn

103

102

101

100

99

98

97

96

95

94

93

92

91

+77

A 90^o 45' L 55^o 45' E on Range line

90

89

88

6-15-19

5

Leslie McAninch House 100'

tag Alders

Rocky and Hardwood
Higher land

Have tam sump cater Hardwood

Sec. 19, 24, 25, 30

Sec cor lays 7.6 to R

Entirely for sett
for accurate work

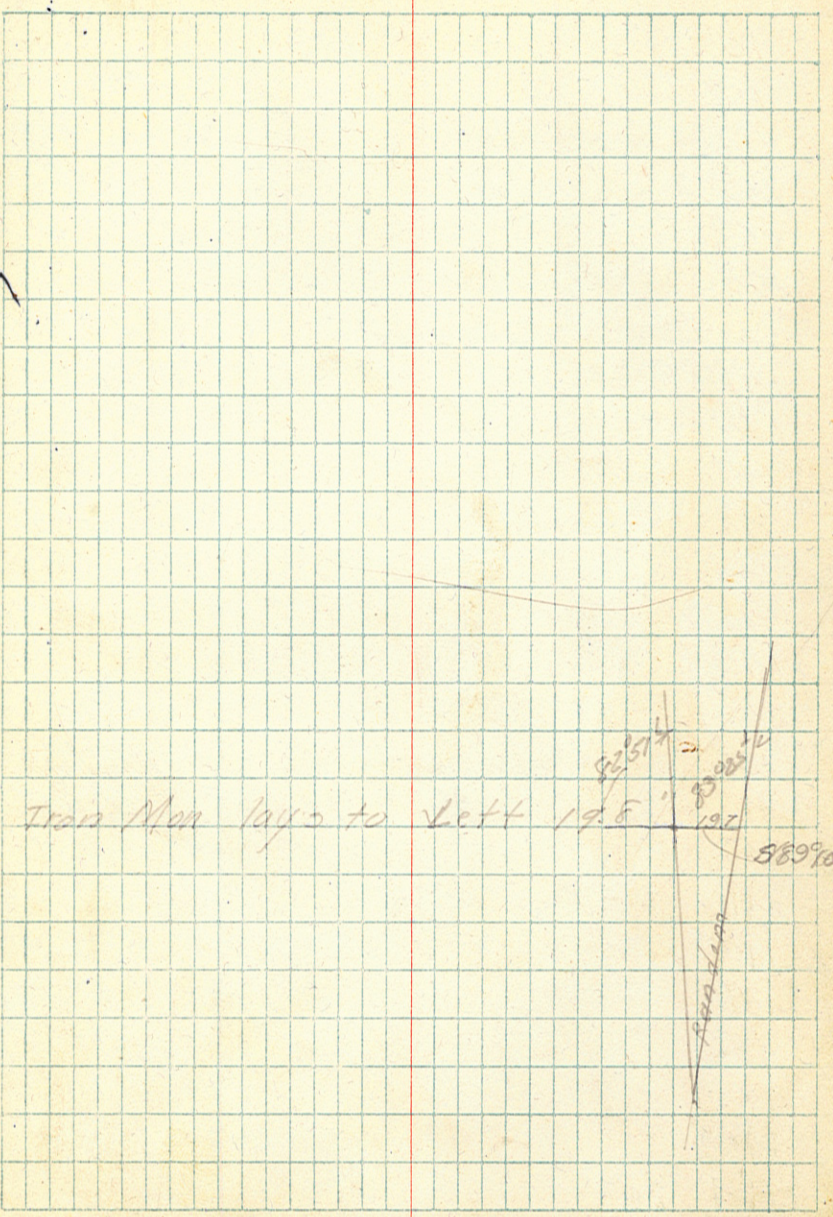
133
 132
 131
 130
 129
 128
 127
 126
 125
 124
 123
 122
 121
 120
 119
 118
 +369
 117
 116 POT
 115
 114
 113
 112
 111 pot
 110

S 5° 20' E

1/4 cor

6-15-19

6



5-15-19
Raining

7

158

157

156

155

154

153

152

151

150

149

148

147

146

145

144

+03^s

Hub

SW cor Sec
30

W.C. didn't change
from true sec cor

143

142

141

P.O.T.

140

139

138

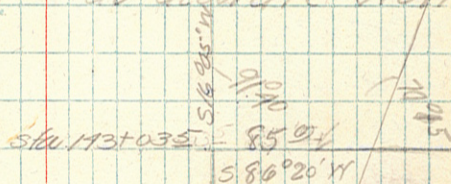
137

136

134

P.O.T.

too soft to
do accurate work



true sec cor May 1916 west according to
Baldwin in 1916 Enter tam swp

6-15-19

8

+652 Road to left
 175
 174
 173
 172
 +297 D21°19'R
 171
 170
 169 511°30'N. Mag.
 168+592 SW. End of Bridge
 ↑
 32.3 Bridge
 3
 +362 N.E. end of bridge
 165
 164
 +235 Δ11°10' L 516°35'N to N.E. end of bridge
 163
 162
 161
 160
 159 Δ11°40' R 527°45'N

Run Magnetic from 168+592 could not get
 1100' acct piling
 not cut off.
 span on R. 305 } piling irregular.
 " on L 300 }

6-16-19.

Run with
Transit 9

	BS	HI	FS	Red	Elev.
B.M.	0.88	200.88			200.00
00				0.6	00.3
1				6.1	199.8
2				11.4	89.5
3		11.70		13.8	87.1
T.P.	0.27	189.18	11.97		188.91
4				7.3	84.9
5				6.4	82.8
6				9.2	80.0
7				11.3	77.9
8		71.6		10.6	78.6
T.P.	2.57	182.02	9.73		179.75
9				4.2	77.8
10				4.4	77.6
11				1.5	77.5
12				4.7	77.3
13				4.7	77.3
14				5.0	77.0
15				4.5	77.5
16				5.4	76.6
17				5.0	77.0
T.P.	8.03	185.70	7.65		177.37
18				9.1	76.3
19				8.9	76.5

spike in fence post 40' L at 13'
level

" It is impossible
" to do accurate level
" work as it is too
" soft

5+30 Enter " wet land med low.
" "
" "

← soundings
etc.
3' to blue clay

1' mud to blue clay

Top 17+00

For line due west see page 25 to 23

6-18-19.

10

18570

20				8.5	76.9
21				9.0	76.4
22				10.1	75.5
23				8.9	76.5
24				8.6	76.8
25				8.3	77.1
TP	640	^{1.73} 183.95	7.85		177.55
26				7.1	76.9
27				7.5	76.5
28				7.4	76.6
29				7.4	76.6
30				7.2	76.8
31				7.2	76.8
32				6.5	77.5
33				6.9	77.1
34				7.1	76.6
35				7.2	76.8
TP	720	^{1.07} 185.02	6.13		177.82
36				8.4	76.4
37				7.4	77.4
38				8.3	76.7
39				8.1	76.6
40				8.0	77.0
41				8.7	76.3
42				8.1	76.9

A great deal of water would have to be drained south to 500 Culvert level

"

"

2 1/2' psc to blue clay

"

"

"

"

"

"

"

"

"

" 3' psc to blue clay

"

"

"

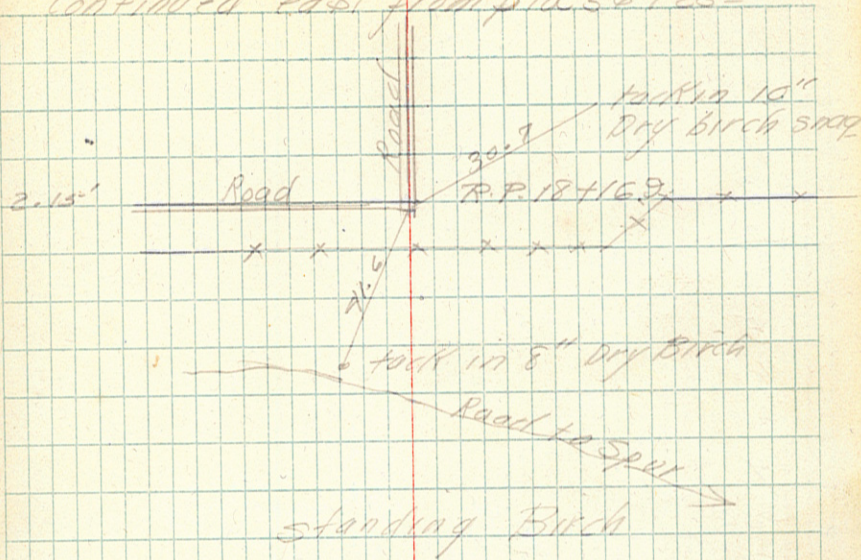
"

"

6-17-19

12

Continued east from 56+230



+16.9

Hub.

Jim Flynn Hub way to North

18

17

16

15

+23

14

13

12

11

10

9

8

+209 Pot.

7

6

5

+876

1/16 cor set by J. Flynn.

4

3

2

1

00

N 86° 33' E

stumps

stumps

00 = 56+230

76° 12'

6-17-19

13

TP	1290	195.80		182.90
00				13.0 82.8
1				12.6 83.2
2				11.9 83.9
3				10.9 84.9
4				10.0 85.8
5				8.0 87.8
6				5.5 90.3
+40				5.2 90.6
7				1.7 91.1
+50				2.3 93.5
8				5.7 90.7
9				9.0 86.8
10				11.2 84.6
11				13.0 82.8
TP	306	8.17 187.63	1123	181.57
12				5.3 82.3
13				5.2 82.4
14				5.1 82.5
15				5.0 82.6
16				4.8 82.8
TP	685	297 190.62	386	183.77
17				6.1 84.2
18				5.3 85.3
+16.9				5.2 85.4
BM			5.10	185.22

T.P. Top 56+23

Tack in G White pine 45' to R of 18+16.3

39
 38
 37
 36
 35
 34
 33
 32
 31
 30
 29
 28
 +104
 27
 26
 25
 24
 23
 22
 21
 +285
 +092
 20
 +795
 +70
 14355 Pot West

N80°17'W

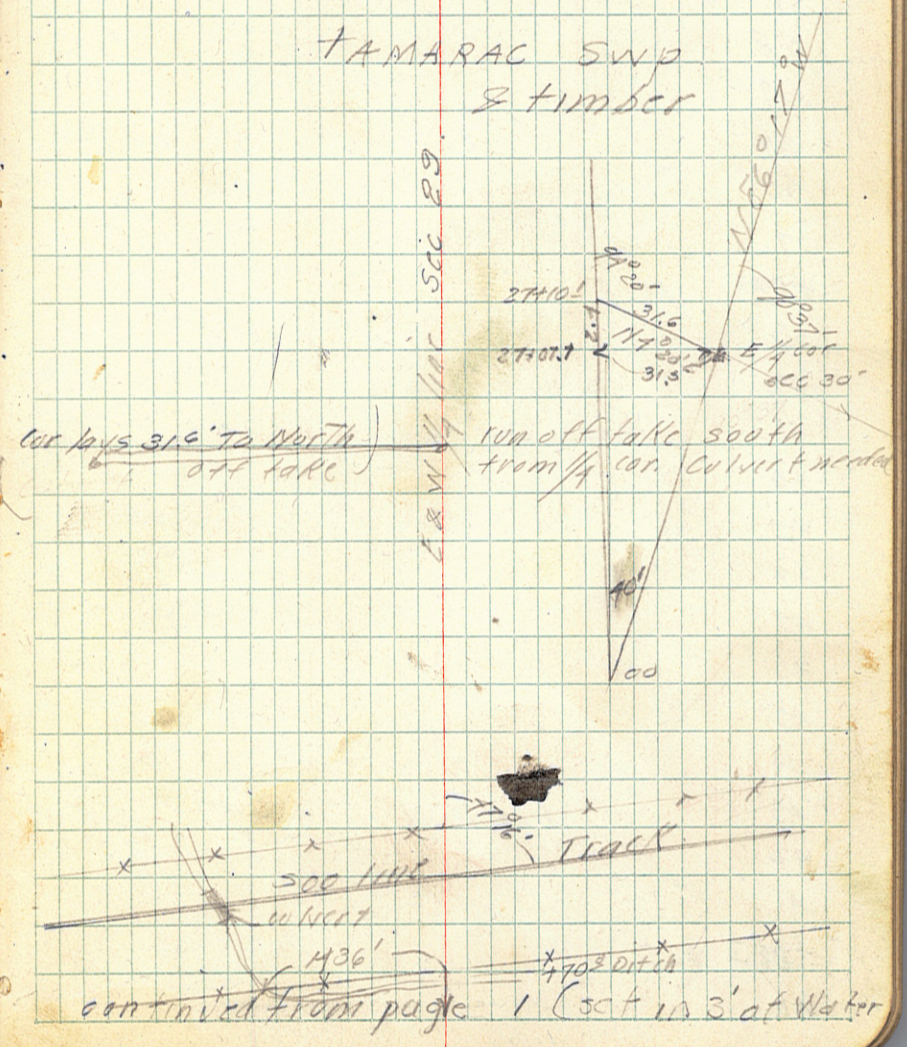
94.20 R F 1/4 Cor SCC 30 (Sta 27+07.7)

6-25-19
 J.F.P.
 S. Johnson

14

Follow Flynn line West from E 1/4 Cor sec 30

TAMARAC SWP
 & timber



6-26-19

15

63

62

61

60

59

58

57

56

55

54

+889

POT.

53

52

51

50

49

48

47

46

45

44

43

N86°17'W

42

41

+283 POT.

40

All water

TAM SWP

& timber

6-26-19

16

+535 A = STA 114+173 on Range

79

78

77

+916 O

76

75

74

73

72

71

70

69

68

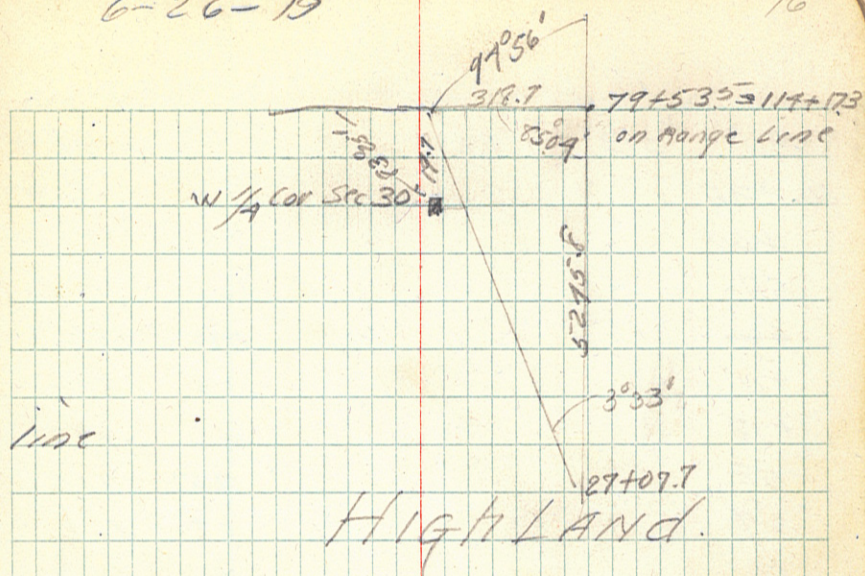
67

+612 POT N86°17' W

66

65

64



Highland

6-26-19

18

18340

73			5.1	78.3
74			4.9	78.5
75			4.8	78.6
76			4.8	78.6
TP	373	183.88 ⁷⁶	3.25	180.15
77			5.1	78.8
78			5.6	78.3
79			5.5	78.4
80			5.8	78.1
81			6.1	77.8
82			5.8	78.1
83			5.3	78.6
T.P.	243	183.01 ⁸⁷	3.20	180.08
84			4.5	78.5
85			4.5	78.5
86			4.5	78.5
87			4.2	78.8
88			4.5	78.5
89			4.5	78.5
90			4.5	78.5
T.P.	388	182.84 ^{0.17}	4.05	178.96
91			4.3	78.5
92			4.3	78.5
93			4.3	78.5

level

"

"

on stump 3' W of 76+00° on line

water

Water & very soft
(swamp)

5' pctc to clay

Twp Hub 901772 6' pctc to clay

6-20-19

19

182.84

94				4.7	78.1
95				1.8	78.0
96				4.5	78.3
97				4.4	78.4
98				4.3	78.5
99				4.5	78.0
T.P.	390	183.31	3.13		179.41
100				5.0	78.3
101				5.2	78.1
102				5.3	78.0
103				5.4	77.9
104				5.3	78.0
105				5.5	77.8
106				4.1	79.2
107				2.8	80.5
T.P.	7.54	189.61 ⁶³⁰	1.26		172.05
108				8.1	81.5
109				6.5	83.1
110				4.8	84.8
111				6.6	83.0
112				7.9	81.7
113				10.4	79.2
T.P.	3.85	183.41 ⁷¹⁷	10.02		179.59
114				4.6	78.8
BM			320		180.29

TAMARAC
SWAMP

6.2' pctc to clay

SPIKE IN 6" ledar 1' L 114750

6-27-19

20

	536	185.60		180.24
115				7.0 78.6
116				5.3 80.3
T.P.	883	^{7.11} 193.04	139	184.21
117				8.2 84.8
B.M.			7.70	188.34
118				5.9 87.1
119				7.1 88.6
120				3.0 90.0
T.P.	386	⁶⁷ 193.68	322	189.82
121				5.1 88.6
122				5.7 88.0
123				1.6 89.1
124				3.8 89.9
T.P.	239	¹²³ 192.45	357	190.11
125				2.1 90.7
126				4.5 88.0
127				5.0 87.5
128				5.6 86.9
129				6.7 85.8
130				9.7 82.8
T.P.	160	⁷²⁵ 184.80	925	183.20
131				3.8 81.0
132				4.6 80.2
133				5.9 78.9

KVC

11

11

top N 1/4 cor sec 30

6-27-19

21

		17980			
134				5.4	79.4
135				5.5	79.3
TP.	945	18483 ⁰⁰	7.62		18018
136				7.9	79.9
137				7.9	79.9
138				5.3	79.5
139				5.1	79.7
140				5.9	78.9
141				7.9	76.9
142				9.1	75.7
143				10.4	74.4
TP.	430	17723 ⁶⁰	11.90		172.93
BM.			409		173.19
144				7.6	72.6
145				7.4	72.8
146				4.9	72.3
TP.	277	17717 ⁶⁰	283		174.90
147				5.0	72.2
148				7.5	72.7
149				7.9	72.3
150				7.5	72.7
151				5.0	72.3
152				7.3	72.9
153				4.8	72.4

Top Hub at sta 144+03.5 SW cor Sec 30
 3' etc to clay (Poor chance for levels)
 as it is very soft

Ham SWP

6-27-19.

22

		177.17			
154				7.5	727
153				4.2	730
T.P.	489	177.31 ¹⁴	4.75		172.42
156				4.6	727
157				4.4	729
158				5.0	723
159				4.7	72.6
B.M.			3.44		173.67
160				4.8	72.5
161				4.5	72.8
162				4.5	72.8
163				4.8	72.5
T.P.	5.59	178.37 ¹⁰²	4.53		172.78
164				6.2	72.2
165				6.8	71.8
+90				7.9	70.5
			7.63		170.74
B.M.	3.48	181.38 ³⁰¹	5.17		172.90
168				10.3	71.1
169				7.8	73.6
170				6.8	74.6
171				5.5	75.9
172				5.1	76.0
173				4.7	76.7
T.P.	5.27	182.56 ¹¹⁰	4.09		177.29
T.P.	7.19	187.81 ⁵²⁵	1.44		180.62

1' pck to clay

B.M. 40' L sta 158 + 70 tack in root of Eth Tam
stump.

TAM SWP.

Top Hub 163 + 236

1' pck to clay

Boq

Water elev. Boy River.

on west end piling of SW wing of bridge
S.W. end bridge

cont on page 29

		183.44			
79+535				4.7	78.7
79				2.2	81.2
T.P.	530	³⁵⁶ 187.00	174		181.70
78				3.9	83.6
77				6.1	80.9
76				8.3	78.7
75				9.3	77.7
T.P.	455	⁴⁰² 182.98	857		178.13
74				5.2	77.8
73				5.3	77.7
72				5.2	77.8
71				5.8	77.2
70				5.6	77.9
69				6.0	77.0
68				5.8	77.2
67				5.6	77.9
T.P.	397	¹⁷⁴ 181.22	523		177.75
66				7.6	76.6
65				4.6	76.6
64				4.1	76.8
63				3.9	77.3
62				4.1	76.8
61				4.0	77.8
60				4.3	76.9
59				4.4	76.6

6-25-10.

23

Levels east from sta 79+535
which = 119+173 on Range line Aug 19.

level

"

"

"

"

"

"

"

"

"

"

5' pit to clay

9' pit to clay

6-26-19.

29

18122

58				4.5	767
57				3.5	777
TP.	200	181.53 ³¹	229		177.93
56				4.7	768
55				5.0	765
54				4.4	77.1
53				4.8	767
52				4.9	767
51				4.6	76.9
50				4.5	77.6
49				5.8	76.5
TP.	276	181.07 ⁴⁶	322		178.31
48				4.3	76.8
47				4.5	76.6
46				4.2	76.9
45				4.4	76.7
44				4.4	76.7
TP.	320	181.10 ⁵³	317		177.90
43				4.6	765
42				4.7	767
41				4.9	762
40				5.3	75.9
39				5.3	75.8
38				4.8	76.3
37				4.7	76.4

TP on stump 2' W of 57100

(Blue)
5' pits to clayWater knee deep
Tam swp

TP Top stump on 110c stw 49+200

4' pits to clay

on stump at 44100

4' pits to clay

6-26-19.

25

18110

36				5.1	76.0
35				5.1	74.0
34				5.1	76.0
T.P.	317	180.68 ¹²	359		177.51
33				4.8	75.9
32				4.5	76.2
31				4.8	75.9
30				4.5	76.2
29				4.5	76.2
28				4.7	75.9
T.P.	424	180.61 ⁰⁷	431		176.37
27				4.4	75.7
26				4.4	76.2
25				4.4	74.2
24				4.7	75.9
T.P.	800	185.14 ¹⁵³	317		177.14
23				4.3	75.8
22				4.2	75.9
21				4.3	75.8
+29				4.0	76.1
+15				4.5	80.6
20				4.1	80.7
Top rail				3.94	181.20
+90				4.3	80.8
+80				8.0	77.1

continued on next page

5' pctc to Clay

Top Hub 271072 At E 1/4 Cor Sec 30
7' pctc to Clay

8514

T.P.		7.38	177.76
T.P.	7.38	^{corrected} 184.93	177.55
B.M.		636	178.57

6-27-19.

9330

177.76
177.55
21

26

177.76
177.55
21

From sta 19 to sta 20 see page 9
Check on T.P. at sta 25+00 page 10
177.76
177.55 in check.
21

B.M. spike in tele pole 20' R sta 20+00
on line run west

20

in ditch from

19

18

17

16

15

14

13

12

11

10

9

8

7

6

5

4

3

2

1

00

93°22' L 500°21' W

off take south from sta 27+07.7

E 1/4 Cor sec 30

500-line off take

TAM SWP.
Mostly brush

93°25' E 1/4 Cor sec 30
 Random Line
 00 = E 1/4 Cor sec 30 Sta 27+07.7

Sta	BS	HI	FS	Rod	Elev
T.P.	373	18610			176.37
00				1.5	75.7
1				1.5	75.6
2				1.6	75.5
3				1.6	75.5
4				1.1	75.7
5				1.5	75.6
6				5.0	75.1
7				5.1	75.0
8				5.9	74.7
T.P.	390	17910 ^{1.00}	490		175.20
9				4.7	74.9
10				1.6	74.5
11				1.5	74.6
12				4.9	74.7
13				4.8	74.3
14				4.0	73.1
15				6.0	73.1
16				6.3	72.8
T.P.	295 ^{2.42}	17668	537		173.13
17				4.5	72.2
18				4.4	72.3
19				1.6	72.1
20				5.1	71.6
Water elev at ditch				4.62	172.06
B.M.			265		179.03

6-27-19

J.F.P.

S.J.

G.F. Pence

Off take
Levels

28

Top 27+07.7 AT E of Cor 500 30

level

"

"

"

"

"

"

"

"

"

"

"

"

"

"

"

Water 2' deep
SPIKE IN TAMMAG 35' L 18+00

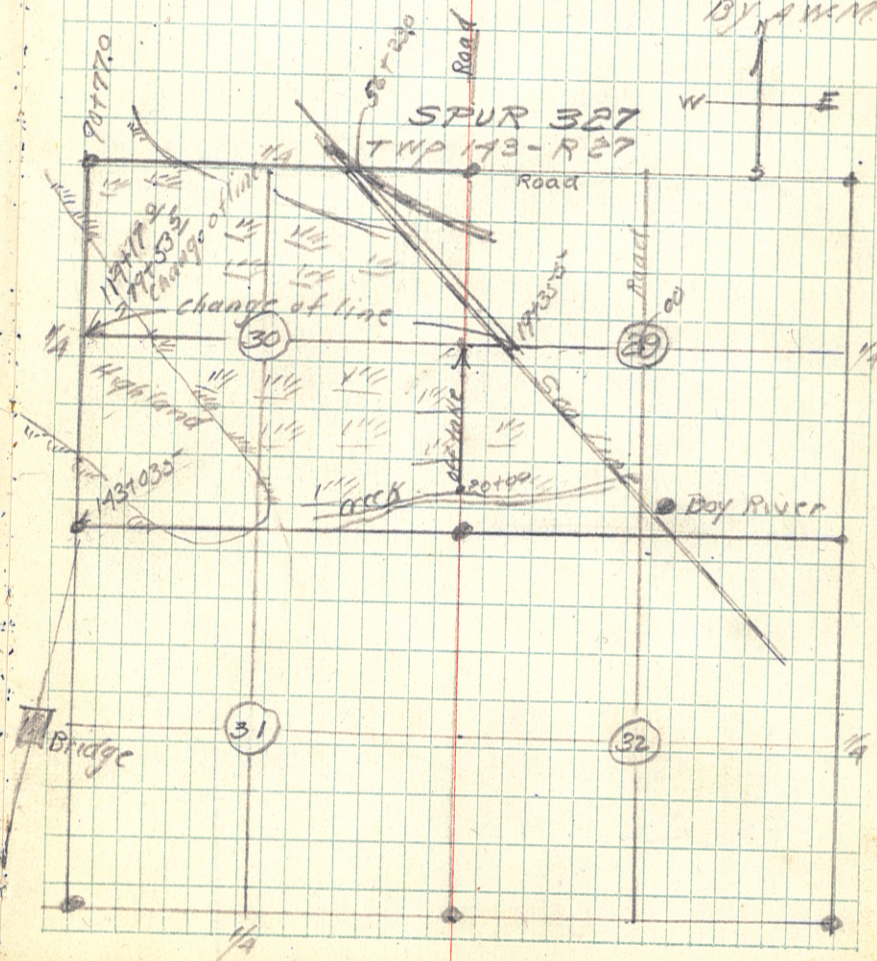
	187.81		
174		9.1	78.4
175		53	82.5
+6.5'		4.3	83.5
B.M.	691		172.90
B.M.		373	176.08

6-27-19

29

continued from page 22

On west end piling of S.W. wing of bridge
 on spike in N.W. cor old shed marked 100.00
 BY A.M.M.



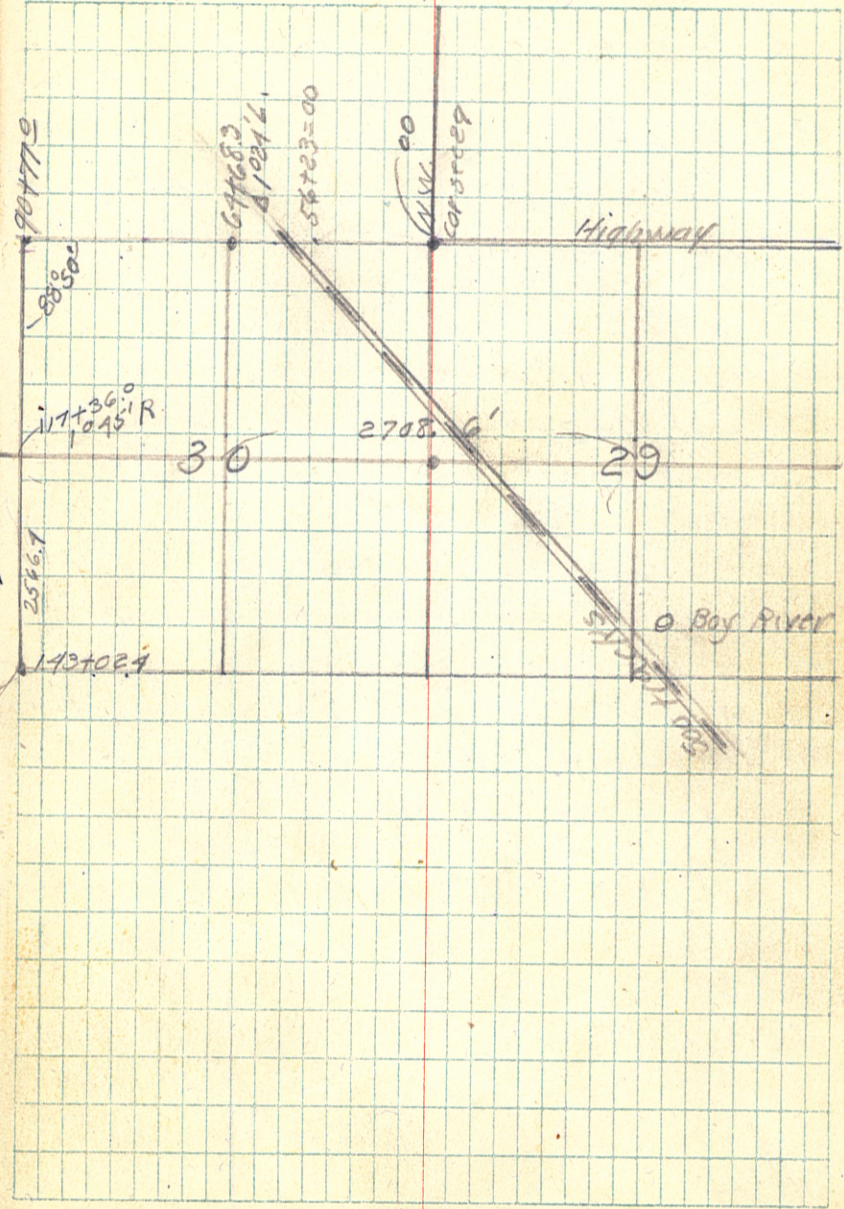
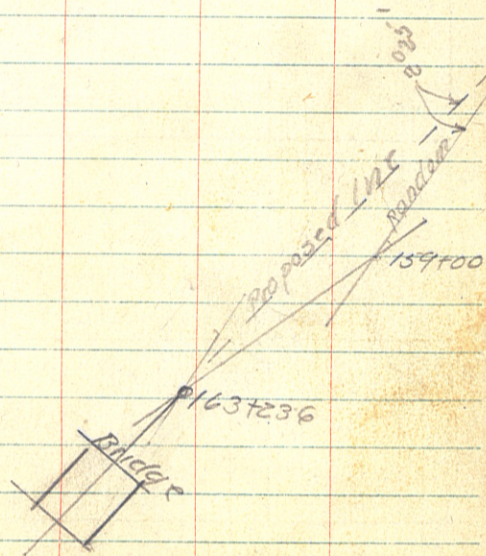
corrections from random lines

sta 4+84.9 E $\frac{1}{16}$ cor. N line sec 30 to 64+68.3 $\frac{1}{4}$
 corner N line sec 30. .0001504 per 1 foot S.

sta 64+68.3 to 90+77.0 NW cor sec 30. .0028366 per 1 ft

" 90+77.0 to 117+36.0 W $\frac{1}{16}$ cor sec 30. .0073802 $\frac{E}{1054}$ per 1 foot

" 117+36.0 to 143+02.9 SW cor sec 30. .033106 $\frac{W}{1054}$ per 1 foot



Aug. 22-23-24-25, -1919.

E. B. Horst, Transitman

B. M. Beach, Chainman,

Robt. Mix, Axeman.

Correcting lines from E. $\frac{1}{4}$ cor.

N. side sec. 30 = sta. 4+89.0

To sta. 143+029 S.W. cor. sec. 30

as per corrections + diagram on
page 30

Sept. 1-2-3-4, 1919

E. B. Horst, Transitman.

B. M. Beach chainman.

Correcting lines W. from cent

of sec. 29 W. to sta. 79+53.5

= $\frac{1}{4}$ S. cor. W. side sec. 30 also (117+36.0).

And change of line from sta.

143+029 (S.W. cor. sec. 30) to sta

163+23.6 as per diagram on

page 30.

Hors +
Anderson } Oct. 2, 1919
Large

196+77.5 \odot E. $\frac{1}{16}$ Cor. on Twp. line Secs. 36-1

196

195

194

193

192

191

190

189

188

187

186

185

184

183

182

181

180

179

178+30 S.W. Cor. of fence 33' L.

178

177

176 House L. 250 ft.

175 NW. Cor. of Fence 33 ft. L.

174+81.7 \triangle L. $42^{\circ}55'$ RP. fence post

174+65.5 Continue line S.W. $\frac{1}{16}$ 2 ft.

Right $89^{\circ}05'$ W. on Twp. line bet. secs. 36+1

sta. 196+77.5

Right of way cleared of trees.

Rocks, stumps, logs, & brush 4' high

Still on Right of way

Wagon trail winds back & forth over

Rt. of way bear centre but no grading here

S. $75^{\circ}E$. 34.4 ft. in \triangle showed clearing small brush

sta 174+81.7

same crew Oct. 3, 1919

216

215

214, wagon trail on Rt. of Way

213

212+25 leave swamp.

212

211+25 Creek dry now, subject to considerable overflow in wet weather. ^{culvert required.}

211

210+25

210+42 I.M. $\frac{1}{4}$ S. Secs. 1-36. ¹⁴³⁻²⁸ ₁₄₂₋₂₈

210

209

208

207

206+29 \triangle on rise Mag. bearing

206

205

204

203

202

201

200

199

198

197

Enter swamp 1 ft. to hard bottom

Wagon trail leaves Rt. of way N.

O.M. $\frac{1}{4}$ S.N. $88^{\circ}45'$ W. (Var. $8^{\circ}30'$)

34

Same crew Oct. 4, 1919.
+ Ray Mix

- 238
237 South on cut out Rt. of way 66 ft. wide
(35-36-143-28)
236+64.6 O.I.M. to cor. of Secs. 1-2-142-28
236
235+80 leave swamp.
235
234+15 enter tam. swamp at N. end.
234 Wagon trail leaves Rt. of way
233
232
231
230
229
228
227 Reinke's log house R. 75 ft.
226
225 Post + Rail fence 13 ft. R.
224
223+50 S. end of swp. 30 ft wide
223
222
221
220
219
218
217

Brush 6' high.

L. 91° 16'

S. between secs. 1+2.

197 to Sta. 234
Centre of pt. of way,
+ brush 8 ft. wide
Way stumps, Rack, and 4"
burned + dead.
Timber consists of
Aspen, Birch + some Pine.

From station.
Wagon trail near
cleared of timber.
Balance of pt. of
12" Timber 75%
Brush medium thick, 4' to 5' high.
Timber consists of
Aspen, Birch + some Pine.

Log House.

35-

Oct. 4, 1919.

262

261+66.7

© 1/4 S. Cor. between secs. 1+2.

261

260

259

258

257

256

255

254

253

252

251

250

249

248

247

246

245

244

243

242

241

240

239

34

Oct. 6, 1919.

287+31.3 O.I.M. Sec. cor. to secs. 1-2-11-12

287

286

285

284

283

282

281

280

279

278

277

276

275

274

273

272

271

270

269

268

267

266

265

264

263.

142-28.

37

- 311
- 310
- 309
- 308
- 307
- 306
- 305
- 304
- 303
- 302
- 301
- 300
- 299
- 298
- 297
- 296
- 295
- 294
- 293
- 292
- 291
- 290
- 289
- 288

287+31.3 R. 4°23' S. on sec. line between

287+31.3

School house 24' L. (22ft. wide).

sections 11-12, 192-28. Mag. brg. ^{Var. 8830'} S. 4°30' W.

38

335

334

333

332

331

330

329

328

327

326

325

324

323

322

321

320

319

318

317

316

315

314

313+75³ © I.M. $\frac{1}{4}$ S. Cor. between secs. 11-12

313

312

39

357

356

355

354

353+70.2

U.S. 1/4 cor. (wood stake)

353+26

totero d. brack N. & S.

353

352

351

350

349

348

347

346

345

344

343

342

341

(Right. 86°16' west between
I.M. & Gen'l. Land office I.M.

340+22.5

340

339

338

337

336

stations 353 to 375
scattering timber
small brush. 10% open land.

stations 287 to 353
Large scattering timber
Heavy under growth and
large stumps.

sections 11-14. slightly rolling.
cor. to seas. 11-12-13-14 T. 142, R. 28.

40

377

376

375

374

373

372

371

370+80 Leave swamp.

370

369+55 W. side of Ridge.

369

368

367+75 E. side of small Ridge extendg N.

367+155 $\frac{1}{4}$ S. Cor. between secs. 11-14.

367

366

365

364+70 E. side of swamp.

364

363

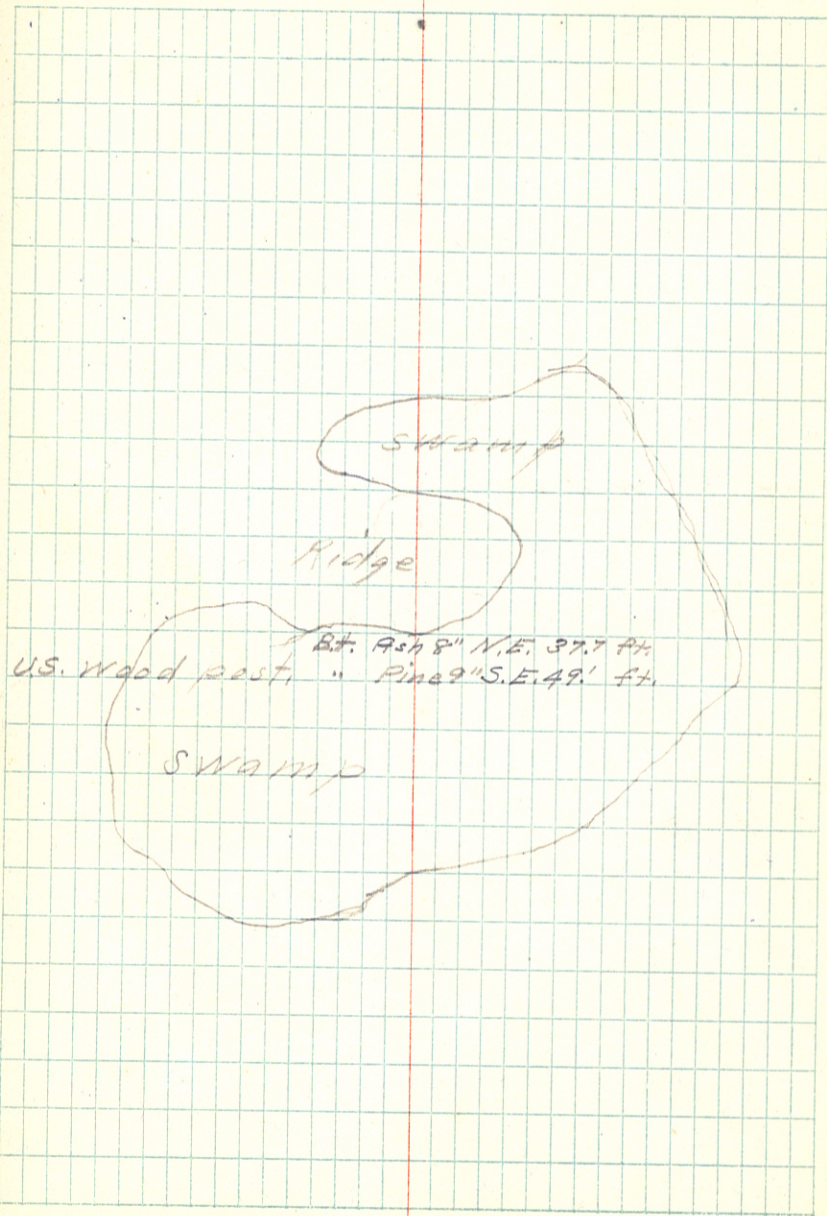
362

361

360

359

358



Pages 1 to 20
see 2nd Book of Box River Road.
For Balance of Transit Notes

405
404
403+50 Wagon trail N.E. + S.W. Ravine outlet

403

402

401

400

399

398

397

396+50 Spring Creek 1.5 ft. wide NW+SE.

396

395+16.5 Left $37^{\circ}10'$ S. on sec. line sec. Cor 10-11-14-15 sets N, 209.2 ft.

395

394+90 Leave swamp (dry at present)

394

393

392+51 Left, $52^{\circ}00'$ Cor. to secs. 10-11-14-15 sets

392

391

390

389

388

387

386

385

384

383

382

381

380+62.3 To U.S. W. N. S. Cor secs. 11-14.

380

379

378

to same Lowland Culvert required

Culvert required.

14-15 sets N, 209.2 ft.

sta 395+16.5

Pine NW. 35.3'

Aspen W. 33.3'

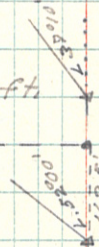
sec Cor I.M.

W. 162.5 ft.

sta. 392+51.

Oak NW. 40.5'

Oak N. 42.5'



Wood post.

42		Levels.	ok	ck
	+ S	H.I.	Rod. - S.	Elev. $\frac{\Phi}{\text{ground Elev.}}$
B.M.	8.35	181.25		172.90
T.P.			1.4	179.85
	8.45	188.30		
174+81.9			5.1	183.2
175			5.0	183.3
176			4.7	183.6
177			4.5	183.8
178			3.8	184.5
179			2.9	185.4
180			2.0	186.3
T.P.			1.7	186.60
	3.60	190.20		
181			4.6	185.6
182			3.4	186.4
183			4.7	185.5
184			5.1	185.1
185			4.6	185.6
186			4.7	185.5
187			4.7	185.5
188			4.2	186.0
189			3.4	186.8
T.P.			2.20	188.00
	7.80	195.80		
190			6.0	189.8
191			6.7	189.1

H.I. - ck

Pomasels B.M. S.W. Wing piling. spike

43

	+ S	HI	Rad. - S	Elev
		193.80		
192			5.0	190.8
193			5.4	190.4
194			5.7	190.1
195			6.6	189.2
196			6.4	189.4
196+77.5			5.7	190.1
T.P.			4.7	191.10
	4.10	195.20		
B.M.			1.80	193.40
197			4.8	190.4
198			3.9	191.3
199			4.5	190.7
200			5.5	189.7
201			8.1	187.1
202			8.9	186.3
203			9.0	186.2
204			7.0	188.2
205			6.6	188.6
206			8.0	187.2
T.P.			7.20	188.00
	2.55	190.55		
206+29			3.45	187.10
207			5.7	184.9
208			6.6	184.0

HICK

on top of 1M. E 1/2 cor S. side sec. 36.

on top of cedar stump 28' E. of 196+77.5

on top of Hub.

44

Sta.	+ S	H.I.	- S	Elev.
209		190.55	7.20	183.3
210			8.30	182.2
210+04?			7.50	183.0
211+70			10.2	180.3
211.			10.2	180.3
T.P.			10.2	180.35
	8.00	188.35		
			8.9	179.5
212			8.3	180.1
213			6.3	182.1
214			4.5	183.9
215			4.7	183.7
216			4.5	183.9
217			3.5	184.9
218			2.4	186.0
T.P.			1.8	186.55
	12.80	199.35		
219			12.2	187.1
220			10.8	188.5
221			7.7	191.6
222			4.4	194.9
223			2.0	197.3
223+60			3.5	195.8
224.			2.4	196.9
T.P.			2.00	197.35

HICK

on top of I.M. 1/4 S. Cor. S. side sec. 36
E. edge of swp.

bottom of dry creek in swp.
Wedge of swamp

S. end of swp passing N. End on 4.

45-

ckck

T.P.			2.00	197.95
	11.60	208.95		
225			8.5	200.4 ⁵
226			6.2	202.7 ⁴
227			4.6	204.3
228			3.0	206.0
T.P.			1.3	207.65
	4.90	212.55		
229			4.7	207.9
230			4.3	208.3
231			5.0	207.6
232			4.9	207.7
233			5.4	207.2
234			9.8	202.8
234+15			10.2	202.4
235			11.1	201.5
235+60			10.8	201.8
236			10.0	202.6
236+64.5			7.7	205.2
T.P.			7.0	205.55
	3.30	208.85		
237			4.3	204.5 ⁶
238			5.4	203.7 ⁵
239			4.9	204.0
240			5.6	203.2 ³

HI ck

E. side swp.

in swp. extends N. 50 ft. + South?

W. side swp.

on top of sec. Cor. 1M. Sees. 35-36-143-28.
1-2-142-28.

in W. edge of swp.

" " " " "

ck ck

208.85

241	6.2	202.4 ⁷
242	4.5	204.3
242+35	5.35	203.5 B.M.
243	6.7	202.7
243+20	9.4	in smpl. 4
244	5.1	203.7 ⁸
245	7.3	201.5
246	6.6	202.2 ³
247	6.8	203.8
T.P.	6.15	202.70

4.80 207.50

248	6.0	201.5
248+60	6.5	201.0
249	6.2	201.3
250	5.3	202.2
251	5.8	201.7
252	7.1	200.4
253	9.3	198.2
254	8.2	199.2
255	8.2	199.3
T.P.	7.60	199.90

5.30 205.20

256	6.0	199.2
257	5.3	199.9
258	4.4	200.8

H.I ck

on 16" Aspen 43' L. of 4.

Ravine leading W.

Probably off take ditch
neck of swamp extends W. across road

47

H.I.

205.20

259		4.4		200.8
260		6.0		199.2
261		5.9		199.3
261+667		5.63		199.6
262		5.2		200.0
263		5.3		199.9
T.P.		5.63	199.57	
	9.73	209.30		
264		8.60		200.7
265		8.5		200.8
266		6.7		202.6
267		5.5		203.8
268		5.4		203.9
269		6.5		202.8
270		6.3		203.0
271		6.2		203.1
272		6.2		203.1
273		5.1		207.2
TP		4.9	204.40	
	8.30	212.70		
274		8.3		204.4
275		8.8		203.9
276		7.3		205.4
277		6.6		204.1

H.I. 4

OK

OK

Top of 1.M. 1/4 S. Cor. bet. secs. 1-2-142-28.

6.20

4.80

L. 30 20 10 10 20 30 R.

48

Sta.	+S	H.I.	-S.	Elev.	ck	ck
		212.70				
278			6.20	206.5		
279			6.8	205.9		
280			6.2	206.5		
281			5.3	207.7		
282			2.2	210.5		
283			1.0	211.7		
T.P.			0.95	211.75		
	9.80	221.55				
284			8.7	212.9		
285			8.5	213.1		
286			9.3	212.3		
287			7.2	214.4		
287+313			5.5	216.1		
T.P.			4.7	216.85		
	14.15	231.00				
288			13.3	217.7		
289			10.6	220.4		
290			6.5	227.5		
291			1.2	229.8		
T.P.			1.0	230		
	7.00	237.00				
291+			2.7	234.3		
292			3.1	233.9		
293			6.4	230.4		

H.I. ck

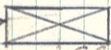
L.			R.		
30	20	10	10	20	30
6.8	---	---	---	---	4.8

6.3 - - - - - 9.0

engraved

ontop of I.M. 4.1 - - - - - 4.9

West edge of Pt. of Way.

← 24 ft. →  School House

49

	HI		OK	OK
294	237.00	6.5		230.5
295		7.5		229.5
296		7.2		229.8
297		8.0		229.0
T.P.		7.4	229.60	
	3.70	233.30		
298		5.3		228.0
299		4.5		228.8
300		4.8		228.5
301		4.8		228.6
302		7.8		225.5
303		12.0		221.3
304		13.4		219.9
T.P.		11.9	221.40	
	3.60	225.00		
305		5.3		219.7
306		5.4		219.6
307		4.8		220.2
308		3.1		221.9
309		3.0		222.0
310		4.3		220.7
311		6.1		218.9
312		7.5		217.5
313		9.1		215.9
313+75.3		10.1		214.9

HI 6

50

Sta	+S	H.I.	-S	Elev	ok	ok
T.P.		225.00	9.0	216.00		
	3.78	219.78				
B.M.			3.37	216.41		
T.P.				216.00	(?)	
	1.90	217.90				
314			3.00	214.9		
315			3.80	214.1		
316			4.4	213.5		
317			4.8	213.1		
318			5.3	212.6		
319			5.4	212.5		
320			6.5	211.4		
321			4.3	213.6		
322			6.5	211.4		
T.P.			4.90	213.00		
	1.70	214.70				
323			4.4	210.3		
324			5.4	209.3		
325			7.7	207.0		
326			8.2	206.5		
327			6.8	207.9		
328			6.0	208.7		
328+50			2.4	212.3		
329			4.1	210.6		
330			10.6	204.1		

HI 00

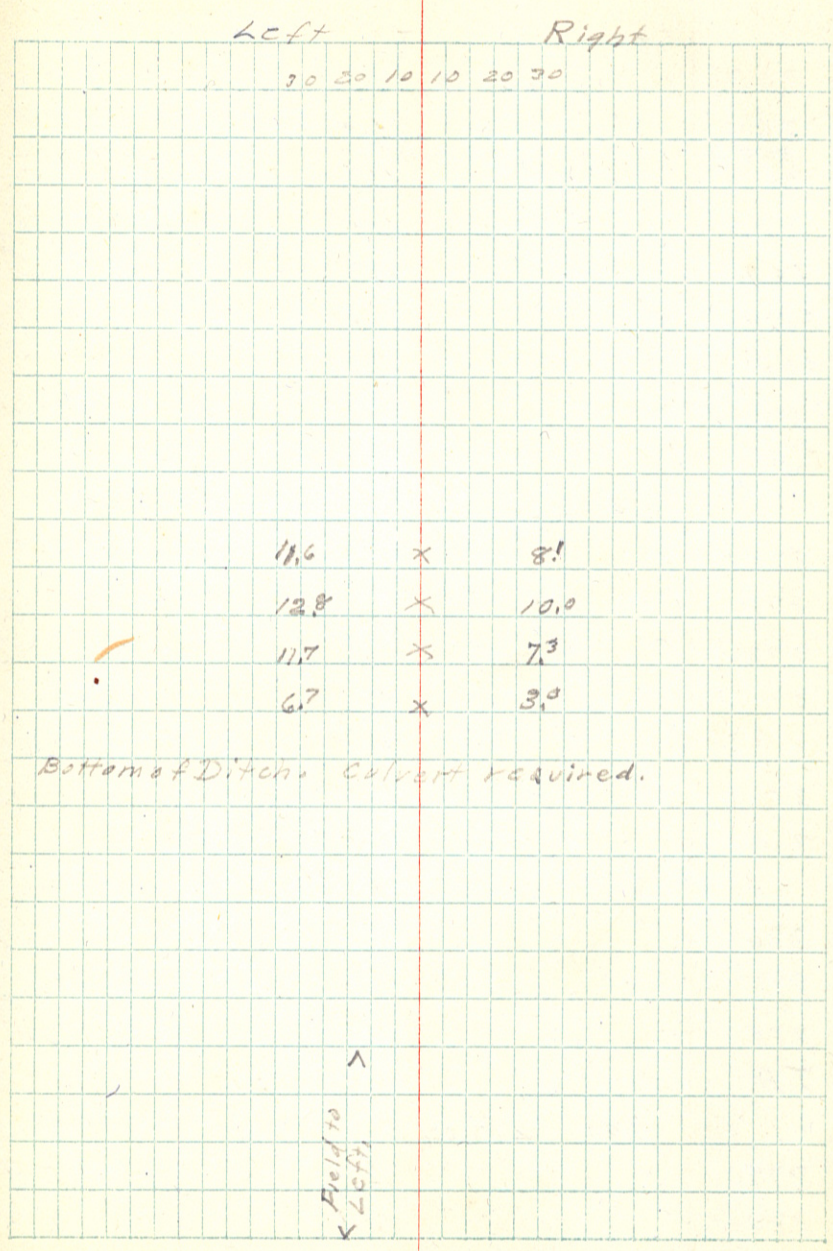
on Top of 1/4 Sec. B.M. Maple 16" 34 ft. Left.

on Root of Maple 34 ft. L. of Sta. 312+25.3.

on popple Ridge E. & W.

Sta.	+S	H.I.	-S	Elev.
T.P.	6.80	201.40		194.60
346			5.5	195.9
347			4.6	196.8
348			8.3	193.1
349			10.2	191.2
350			7.9	193.5
351			9.6	191.8
352			8.1	193.3 192.3
T.P.			7.80	193.60
	9.00	202.60		
353			9.3	193.3
+35			12.1	190.6
354			10.0	192.6
355			5.2	197.4
356			7.5	195.1
356+60			9.7	
357			7.5	195.1
358			5.2	197.4
359			1.0	201.6
T.P.			0.6	202.00
	7.77	209.77		
360			5.9	203.9
T.P.			0.02	209.75
	13.75	223.20		
361			13.2	210.0
362			4.8	218.4

HICK



53

	T.S.	H.I.	-S	Elev
363		223.20	4.6	218.60
364			5.4	217.8
+70			7.0	216.2
365			7.2	216.0
366			6.8	216.4
367			6.7	216.5
367+			6.4	216.8
368			5.70	217.5
369			2.90	220.8
T.P.			2.55	220.65
	12.40	233.05		
370			14.3	218.7
371			13.2	219.8
372			6.2	224.8
373			1.9	231.1
374			2.8	230.2
375			4.1	228.9
T.P.			3.45	229.60
	0.60	230.20		
376			7.3	222.9
377			11.9	218.3
378			13.7	216.5
T.P.			13.10	217.10
	0.90	218.00		
379			4.1	213.9
380			8.1	209.9

HT66

swp.

center of pot hole dug.

54

			W	W
381		218.00	11.30	206.7
382			14.30	203.7
T.P.			10.60	207.40
	11.50	208.90		
383			4.7	204.2
384			7.2	201.7
385			9.8	199.1
386			11.7	197.2
387			9.4	199.5
388			5.4	203.5
389			3.7	205.2
390			0.9	208.0
T.P.			0.80	208.10
	12.90	221.00		
391			5.8	215.2
			0.9	220.10
	14.00	234.40		
392			5.8	228.6
392+51			4.5	229.9
393			5.5	228.9
393+60			7.6	226.8
T.P.			12.35	222.05
	2.80	224.85		
394			9.3	215.7
394+40			10.0	214.9
			HI U	

Culvert,

Point of swamp

Leave swamp



5-5

			CV	CV
395	224.85	4.1		220.8
395+16.5		4.9		220.0
396		10.9		214.0
396+50		12.8		212.1
397		7.1		217.8
398		4.6		220.3
399		3.6		221.3
400		3.5		221.4
T.P.		2.95	221.90	
	1.53	223.43		
401		14.8		208.6
T.P.		10.82	212.61	
	0.76	213.37		
T.P.		13.25	200.12	
	5.20	205.32		
402		8.2		197.1
403		10.5		194.8
+50		11.9		193.4
404		9.2		194.1
+50		4.5		200.8
405		2.0		203.3
T.P.		0.58	204.74	
B.M.		10.83	194.43	

HIK

L.

R.

30 20 10 10 20 30

Bottom of creek 15 ft. wide

Dry creek.

Culvert Required

11.0 X 0.2

dn top of stump.

on 36" Oak 33 ft. L. of sta. 403+50

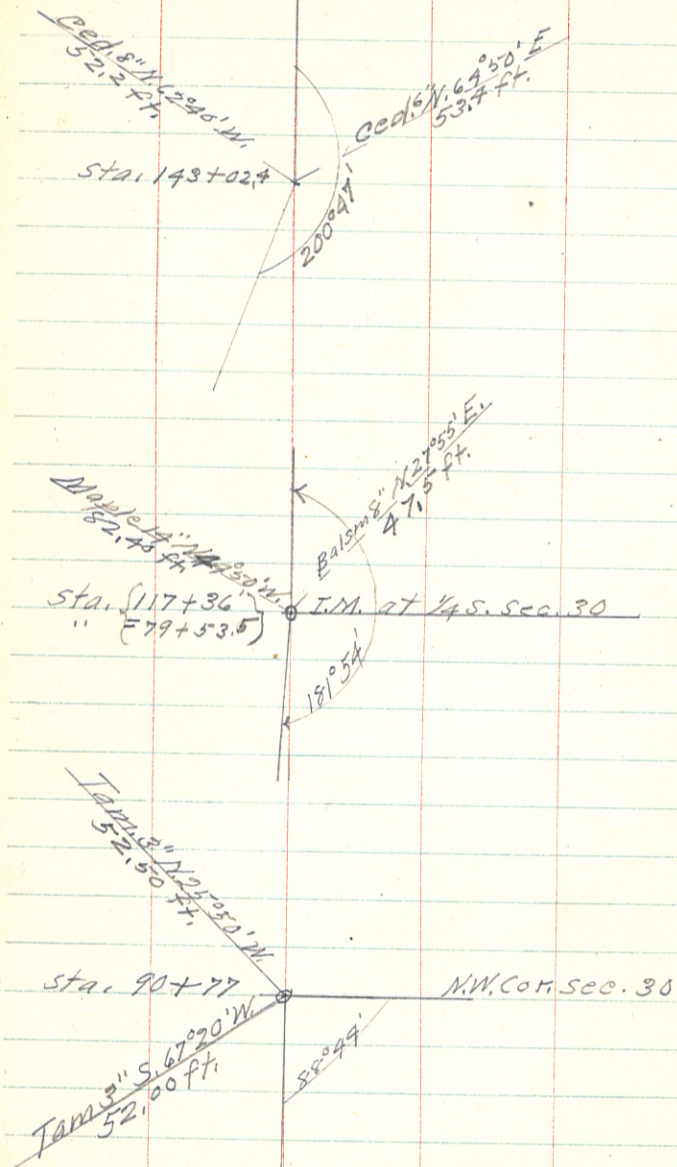
Wed. Oct. 1, 1919. E.B. Horst. Leave Walker
RR fare to Hackensack 40¢. Rain
Pick up John Large & Bert Anderson
and go to Longville on stage. 4.50
Dinner for Horst & Bert Anderson \$1.00
To John Large for dinner .50¢
Rains hard all day cant get to work
stay over night at Longville Hotel
Thur. Oct. 2.

After Breakfast charges
against county \$3.00 (by claim.)
Hire Bert Fuller to take us to
John Hoffmans Charges \$5.
J.C. Huffman with Launch takes us up
Boy River to Mix's place
where we will board.
P.M. We begin at J.F. Pomasels Sta.
174 + 655 & run transit line site to top of hill.
Oct. 3. Run from E.W. cor. S. side 36. W. To
Sec. Cor. common to 35-36-1-2.

Time sheet Boy River Road from Bridge South.

October	1919.	Med	Sundays	bagans													
E.B. Horst,	Engineer,	1	2	3	4	5	6	7	8	9	10	11	12	13	14	15.	
Bert Anderson,	Chiman,	1	1	1	1	1	1	1	1	1	1	1	1	1	1	1	
John Large,	"	1	1	1	1	1	1	1	1	1	1	1	1	1	1	1	
Ray Mix,	Axman,	1	1	1	1	1	1	1	1	1	1	1	1	1	1	1	
Bobt. Mix.	"	1	1	1	1	1	1	1	1	1	1	1	1	1	1	1	
Guy Mix.	Axman.	1	1	1	1	1	1	1	1	1	1	1	1	1	1	1	
L.E. Mix Board to E.B. Horst 1 1/2 days at \$1.50 = \$7.26																	
"	"	"	"	"	"	"	"	"	"	"	"	"	"	"	"	"	"
"	"	"	"	"	"	"	"	"	"	"	"	"	"	"	"	"	"
Horst & 2 chain men at J.C. Hoffmans for supper Oct. 14, 1919.																	
Note see page 20, second Book Boy River Road.																	

R.P.s.



R.P.s S. of Bridge.

196+77.0 } ced. stump E, 28.0 ft. ^{also B.M.}
 Basswood 8" S.W. 53.4 ft.

236+64.5 Birch 10" N.E. 48.0 ft.
 Birch 11" N.W. 50.4 ft.

340+22.5 Elm 20" N.E. 72.2 ft. U.S.B.T.
 Elm 10" S.E. 64.9 ft. U.S.B.T.

58

Tack in F post 270

46786.9

369

Tack in F post

Tack in F post

330

29783.0 POT

Tack in F post

528

41
Fence post

19735.5

Tack in F post

339

10" cedar

17400

52.1

45.5 5" Birch

11" tarp

53.5

12400 POT

51.1

6" tarp

0700

12.5

12.9

Tack in F post

Tack in F post

BOY RIVER ROAD

Daily Notes

- Remiel Wadman & Johnson go to Boy River.
 June 12 via Remier. A.W.M. takes us to Remier with car
 " 13 Go over works with J. Hoffman. & run 1700' line
 " 14 on the works brushing
 " 15 on transit line
 " 16 " " & levels
 " 17 Run cast from spur 327 to intersection of
 North & East Road, also run levels. AM
 PM. take train to Pine River
 " 18 in office on map
 " 25 Go to Boy River via Remier. A.W.M. takes
 Pappas & Johnson. PM brush 1/4 miles
 of line
 " 29 Run 8000' transit line and 2 miles of
 levels. G.F. Pense goes as axeman and
 T.F.P. allowed him supper for working
 over time
 " 27 on off take and levels finish work
 " 28 AM measurements taken PM go to PR
 " 30 in office on profile
 July 1 " " " " & map

TIME SHEET

	12	13	14	15	16	17	18	19	20	21	22	23	24	25	26	27	28	29	30	July 1
Jeff 1910																				
W. Pappas																				
S. Johnson																				
Chas. Wadman																				
Harry. Come																				
A.L. Pappas																				
G.F. Pense																				
(Claim 100 per day for 28 days)																				

KEITH'S RAILROAD CURVE TABLES.

Published by KEUFFEL & ESSER CO., New York.

Entered according to Act of Congress in the year 1883,
by W. Keuffel & H. Esser, in the office of the Librarian of Congress,
in Washington, D. C.

Copyright, 1902, by Keuffel & Esser Co.

HOW TO USE KEITH'S TABLES.

EXAMPLE.

Wanted a Curve with an Ext. of about 12 ft. Angle
of Intersection or I. P. = $23^{\circ} 20'$ to the R. at Station
542+72.

Ext. in Tab. IV opposite $23^{\circ} 20' = 120.87$
 $120.87 \div 12 = 10.07$. Say a 10° Curve.

Tan. in Tab. IV opp. $23^{\circ} 20' = 1183.1$
 $1183.1 \div 10 = 118.31$.

Tab. V correction for A. $23^{\circ} 20'$ for a 10° Cur. = 0.16
 $118.31 + 0.16 = 118.47 =$ corrected Tangent.

(If corrected Ext. is required find in same way)
Ang. $23^{\circ} 20' = 23.33^{\circ} \div 10 = 2.3333 =$ L. C.

$2^{\circ} 19\frac{1}{2}' =$ def. for sta.	542	I. P. = sta.	542+72
$4^{\circ} 49\frac{1}{2}' =$ " " "	+50	Tan. =	<u>1.18.47</u>
$7^{\circ} 19\frac{1}{2}' =$ " " "	543	B. C. = sta.	541+53.53
$9^{\circ} 49\frac{1}{2}' =$ " " "	+50	L. C. =	<u>2.33.33</u>
$11^{\circ} 40' =$ " " "	543+	E. C. = Sta.	<u>543+86.86</u>
	86.86		

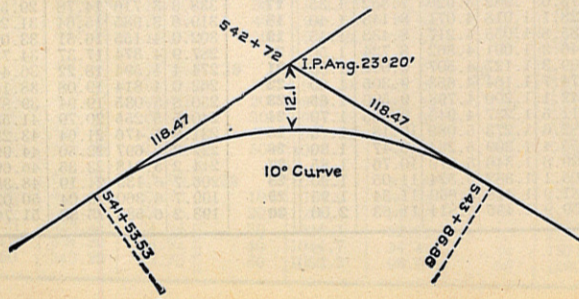
$$100 - 53.53 = 46.47 \times 3' (\text{def. for 1 ft. of } 10^{\circ} \text{ Cur.}) = 139.41' =$$

$$2^{\circ} 19\frac{1}{2}' = \text{def. for sta. 542.}$$

Def. for 50 ft. = $2^{\circ} 30'$ for a 10° Curve.

Def. for 36.86 ft. = $1^{\circ} 50\frac{1}{2}'$ for a 10° Curve.

(These tables are published in Field Books of
KEUFFEL & ESSER CO., New York, N. Y.)



Expense Sheet	Hotel
June 17, RR fare to Washburn	24
June 19, RR fare to Beyer	39
June 17, RR fare to Beyer	1.46
June 17, RR fare to Beyer	50
June 17, RR fare to Beyer	2.02
June 17, RR fare to Beyer	4.37
June 17, RR fare to Beyer	45
June 17, RR fare to Beyer	75
June 17, RR fare to Beyer	75
June 17, RR fare to Beyer	75
June 17, RR fare to Beyer	75

June 25 - supper to J. O. C.
June 25 - supper to J. O. C.
June 25 - supper to J. O. C.
June 25 - supper to J. O. C.
June 25 - supper to J. O. C.
June 25 - supper to J. O. C.
June 25 - supper to J. O. C.
June 25 - supper to J. O. C.
June 25 - supper to J. O. C.
June 25 - supper to J. O. C.

June 17, RR fare to Washburn
June 19, RR fare to Beyer
June 17, RR fare to Beyer
June 17, RR fare to Beyer
June 17, RR fare to Beyer
June 17, RR fare to Beyer
June 17, RR fare to Beyer
June 17, RR fare to Beyer
June 17, RR fare to Beyer
June 17, RR fare to Beyer

11 11 11 11 11 11 33 26 27
2772 113 (11/11/11) 2

Natural Tangents



184,40

183,100

93,45

90° 52'