

③

*Location of Government
Corners*

FIELD BOOK

360

INDEX

1

Location		Page
S.A.R # 7	T139 R 30	3+4
S.A.R # 6	T137 R 29	6-8
S.A.R # 11	T138 R 32	10-12

S.A.P. N^o 7

1/4 Cor. Bet. Sec's. 21 & 28-139-30

Concrete Monument 4"x4" top, 6"x6" base,

18" long, placed at 1/4 Corner Bet. Sec's.

21 & 28-139-30, referenced by two triangular
concrete monuments, 4" top, 6" base
and 18" long; placed as follows:

	Sec.
4" Δ Mon. N52°30'W	46.669' 21
4" Δ .. S37°30'W	46.669' 28

Located from previous road survey R.P's.

Cor. to Sec's. 21, 22, 27, 28-139-30

Concrete monument 4"x4" top, 6"x6" base,

18" long, placed at Cor. of Sec's. 21, 22, 27, 28-

139-30, referenced by two triangular
concrete Mon., 4" top, 6" base and
18" long, placed as follows:

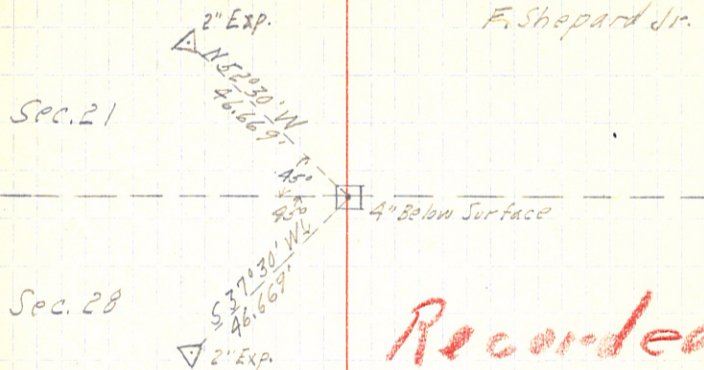
	Sec.
4" Δ Mon. N52°30'W	46.669' 21
4" Δ Mon. S37°30'W	46.669' 28

Located from previous road survey R.P's.

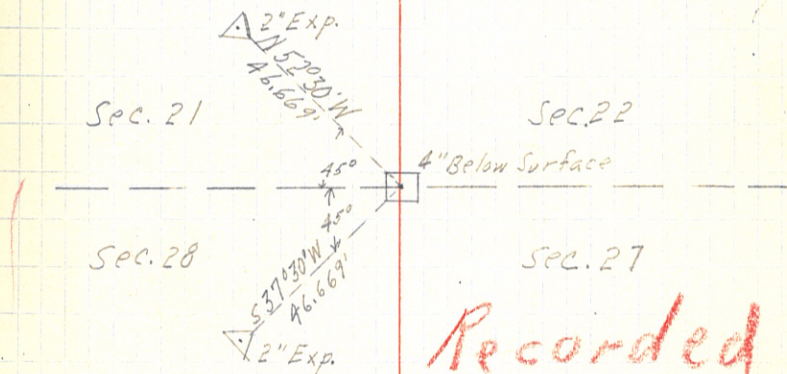
April 26-1927

A.R. Taubman
F. Shepard Jr.

3/



Recorded



Recorded

S.A.R. N^o 7

1/4 Cor. Bet. Sec's. 22 & 27-139-30

Concrete monument 4" x 4" top, 6" x 6" base, 18" long, placed at 1/4 Cor. bet. Sec's. 22 & 27-139-30, referenced by two triangular concrete monuments, 4" top & 6" base and 18" long, place as follows:

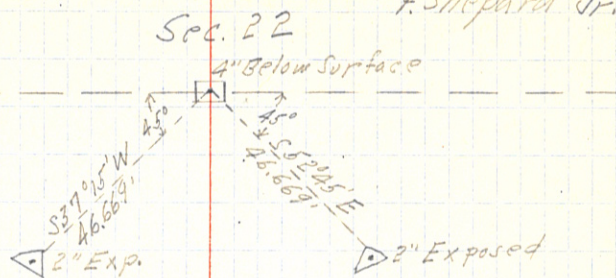
	Sec.
4" Δ Mon S 52° 45' E	46.669' 27
4" Δ Mon S 37° 15' W	46.669' 27

Located from previous road survey R.R.

April 26-1927

4

A. R. Taubman
F. Shepard Jr.



Recorded

Cor. to Sec's. 28, 29, 32 & 33-137-29
 Concrete Mon. 4"x4" top, 6"x6" base, and
 18" long, placed at Cor. of Sec's 28, 29, 32, 33-
 137-29, referenced by two triangular
 concrete Mon. 4" top, 6" base and 18"
 long, placed as follows:

	Sec.
4" Δ Mon. N 51° 57' W 46.669'	29
4" Δ Mon. N 38° 03' E 46.669'	28

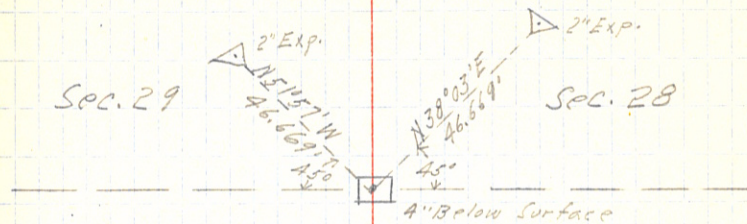
Located from previous road survey R.P's.

1/4 Cor. Bet. Sec's. 29 & 32-137-29
 Concrete Mon. 4"x4" top, 6"x6" base and
 18" long, placed at 1/4 Cor. Bet. Sec's 29 & 32-
 137-29, referenced by two triangular
 concrete Mon. 4" top, 6" base and 18"
 long, placed as follows:

	Sec.
4" Δ Mon. N 51° 57' W 46.669'	29
4" Δ Mon. S 38° 03' W 46.669'	32

Located from previous road survey R.P's.

April 26-1927

A. P. Taubman
F. Shepard Jr.

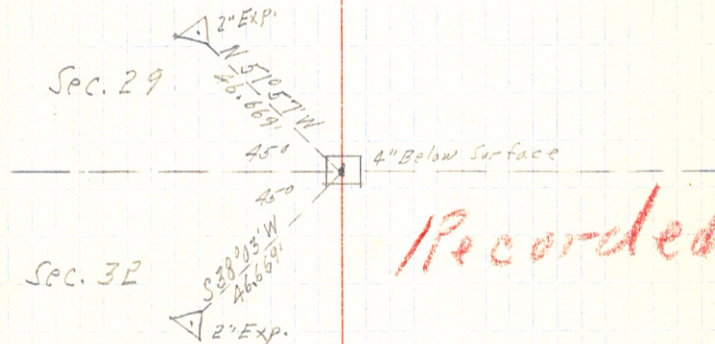
Sec. 29

Sec. 28

Sec. 32

Sec. 33

Recorded



Sec. 29

Sec. 32

Recorded

S.A.R.N. 6

Cor. to Sec's. 29, 30, 31 & 32-137-29

Concrete Mon. 4"x4" top, 6"x6" base, 18" long,
placed at Cor. to Sec's. 29, 30, 31, 32-137-29,
referenced by two triangular
concrete Mon. 4" top, 6" base and
18" long, placed as follows:

	Sec.
4" Δ Mon S 37° 55' W 46.669'	31
4" Δ Mon N 52° 05' W 46.669'	30

Located from previous road survey R.P's.

1/4 Cor. Bet. Sec's 30 & 31-137-29

Concrete Mon. 4"x4" top, 6"x6" base, 18"
long, placed at 1/4 Cor. Bet. Sec's. 30 & 31-137-29,
referenced by two triangular
concrete Mon. 4" top, 6" base and
18" long, placed as follows:

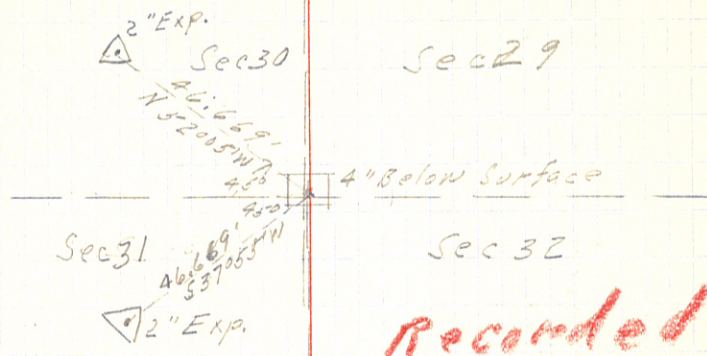
	Sec.
4" Δ Mon S 38° 00' W 46.669'	31
4" Δ Mon N 52° 00' W 46.669'	30

Located from previous road survey R.P's.

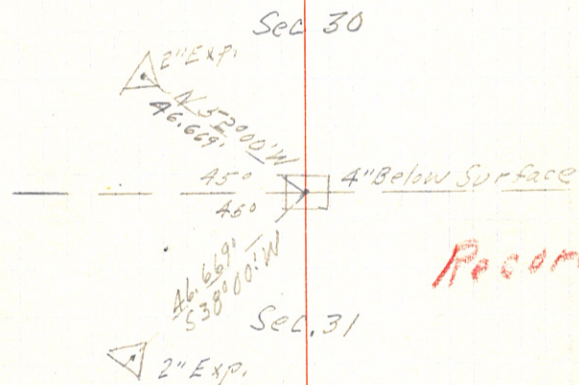
May 11-1927

A.R. Taubman
Donald Houston

7



Recorded



Recorded

S.A.R.N^o 6 & S.A.R.N^o 1

Cor. to Sec's { 25 & 36-137-30
30 & 31-137-29

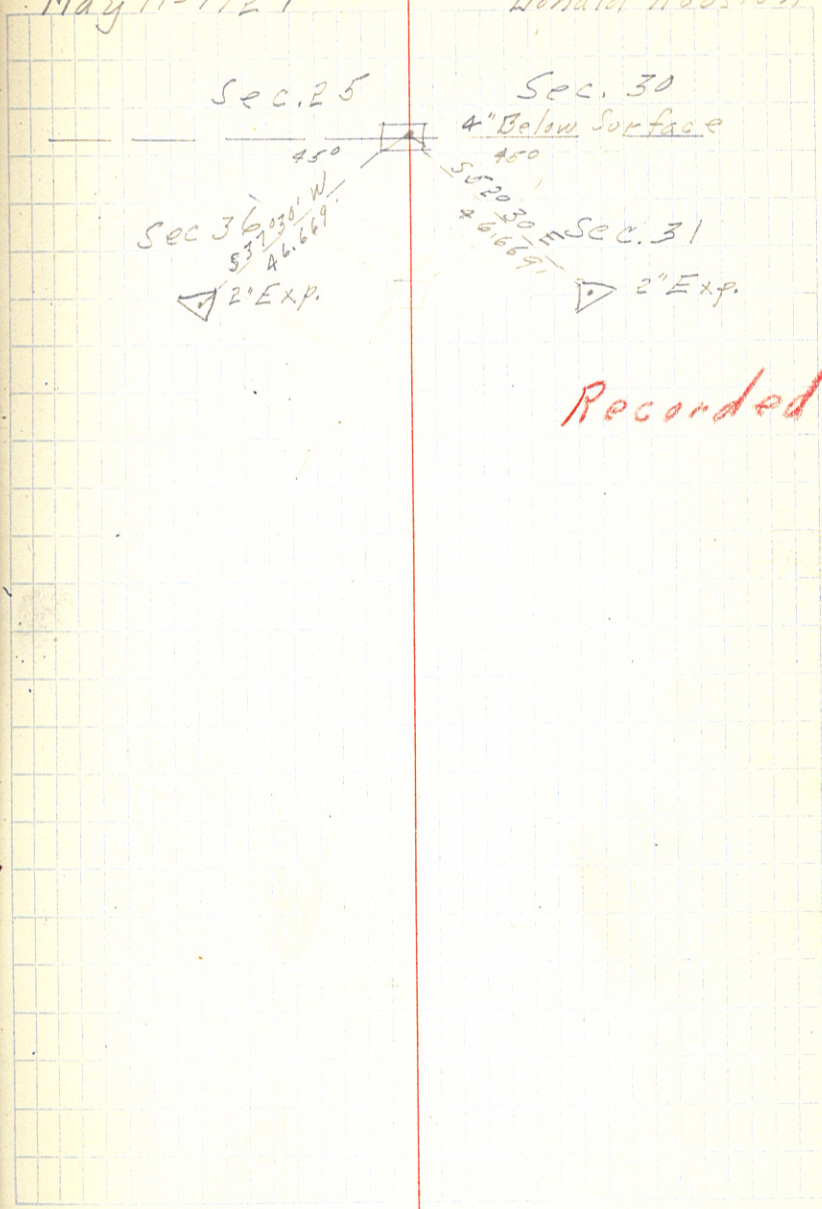
Concrete Mon. 4"x4" top, 6"x6" base, 18" long
placed at above Sec. Cor.
referenced by two triangular
concrete Mon. 4" top, 6" base and
18" long, placed as follows:

			Sec
4" Δ Mon	S 52°30' E	46.669'	31
4" Δ Mon	S 37°30' W	46.669'	36

Located from previous road survey R.P.s.
and old Concrete Mon.

May 11-1927

A.R. Taubman &
Donald Houston



Recorded

S.A.P. No 11

Cor. to Sec's {
 6-138-31
 1-138-32
 36-139-32
 31-139-31

Concrete Mon. 4"x4" top, 6"x6" base, 18" long,
 placed at Cor. of Sec's,
 referenced by two triangular
 concrete Mon., 4" top, 6" base, 18" long,
 placed as follows:-

		Sec.
4" Δ Mon N52°W	46.669'	36-139-32
4" Δ .. S38°W	46.669'	1-138-32

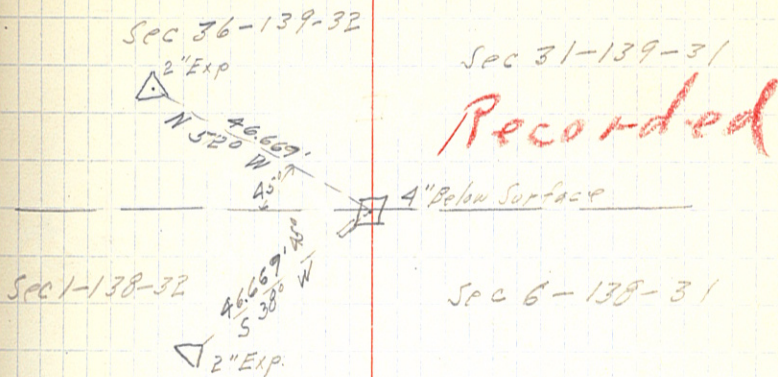
1/4 Cor. Bet. Sec's {
 36-139-32
 1-138-32

Concrete Mon. 4"x4" top, 6"x6" base, 18" long,
 placed at 1/4 Cor. Bet. Sec 36-139-32
 & Sec 1-138-32, referenced by
 two triangular Concrete Mon., 4" top,
 6" base, 18" long, placed as
 follows:-

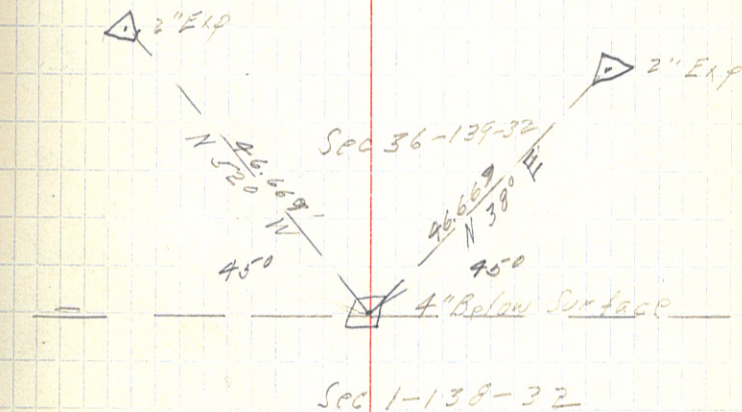
		Sec.
4" Δ Mon N52°W	46.669'	36-139-32
4" Δ Mon N38°E	46.669'	36-139-32

Sept 21-27

Party { A.P. Taubman 10
 F. French



Recorded



Rec.

Sept. 21-27

11

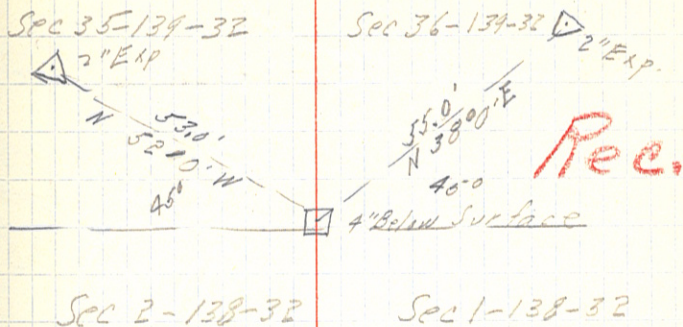
Cor. to Sec's { 35 & 36-139-32
1 & 2-138-32
Concrete Mon 8" x 8" top, 8" x 8" base,
36" long, placed at Cor. to
Sec's., referenced by two
triangular Con. Mon. 4" top,
6" base, 18" long, placed
as follows:-

4" Δ Mon N52°W	53.0'	Sec.
		35-139-32
4" Δ Mon N38°E	55.0'	36-139-32

1/4 Cor. Bet Sec 35-139-32 &
Sec 2-138-32.

Concrete Mon. 4" x 4" top, 6" x 6" base,
18" long, placed at 1/4 Cor.,
referenced by two triangular
Concrete Mon., 4" top, 6" base,
18" long, placed as follows:-

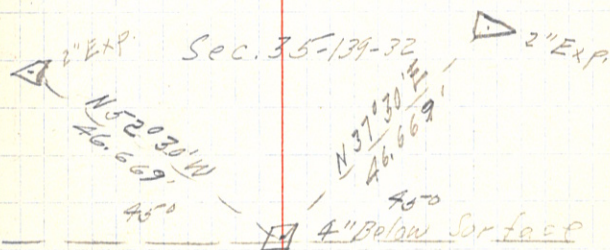
4" Δ Mon N52°30'W	46.669'	Sec.
		35-139-32
4" Δ Mon N37°30'E	46.669'	35-139-32



Sec 2-138-32

Sec 1-138-32

Rec.



Sec 2-138-32

Rec.

Sept 21-27

12

Cor. to Sec's { 34 & 35-139-32
 2 & 3-138-32
 Concrete Mon. 4"x4" top, 6"x6" base,
 18" long, placed at Sec. Cor.,
 referenced by two triangular
 concrete Mon. 4" top, 6" base,
 18" long, placed as follows:-

4" Δ Mon. N37°30'E	46.669'	35-139-32
4" Δ Mon. S52°30'E	46.669'	2-138-32

1/4 Cor Bet Sec's { 34-139-32
 3-138-32

Concrete Mon. 4"x4" top, 6"x6" base,
 18" long, placed at 1/4 Cor.,
 referenced by two triangular
 concrete Mon. 4" top, 6" base,
 18" long, placed as follows:-

4" Δ Mon. N52°30'N	46.669'	34-139-32
4" Δ Mon. S37°30'W	46.669'	3-138-32

