

413

136-29. Harold's Note
Silver Sands

MEMORANDUM

142-29
36

31 142-28
RR spike drive

2 below
road.

1

6

141-29

141-28

July 29-1939-
Saturday

Harold and I in my
'39 Ford took to
Walker 8:45 AM.

On 10 - Lakewood and

2-PM @ Cr.

1-6-31-36 T441-142 N

Rg 28-29.0

Trup Cr.

over

559

2

① Twin Tam 5x5-10"
 joined at base 10" diam
 N 59°37' E 148.3 To
 apical base
 sets met bog

② BT Oak 8 N 62°13' W
 133.50 To apical base

^{26°47'}
 ③ Birch 10-S 33°15' W W 69.10
 to apical base

④ RR Spike in base old
 rather 24" WP slump
 S 37° 28°02' W 70.65

5585

5W Oak 75 54°55' E 56.35
 to apical base

⑤ RR spike at base of old 30"
 WP slump S 36°40' E
 89.85 16°30'

559

141-142-28-29

Twp. Co.

3

SW Cor. Port of Lumber

7" Cedar

$589^{\circ}32'E$ 33.00 h. Q

Q Road $\frac{1}{2}$ mile N or

Fence $589^{\circ}32'E$

$\sqrt{6^{\circ}}$

~~Old~~ C Main road $\frac{1}{2}$ mile
N. or Mindian

Buff. & Burger R.

300" steel lap

R.R. Spike Q Road
for Cor
at Cor Road B.C.

Rain SE

3-28 PM.

No wind. Bright sun

John W. Curo

559

136-29

1
52

Aug. 1. 1939

Wilferd & I Lv Jinks
in my ford at 1:00 clock
and drive to Sec 35-

Finish cutting out sec line
N side sec 35- and then
get ~~the~~ net hubs RR spikes
Beginning at I M cor to
Sec 26-27-34-35-
and run. @

East 255 min W side
State Highway at 269.6 ft
at 282. min E edge highway
 $282 + 46.4 = 328.4$ E. R.R.

spike Hub 00
282.00
46.4

328.4

328.40 E +

6

136-29

Aug 2, 1939

Wilfred and I pile poles
From about 8 o'clock until
about 10. Then I get my
lunch and drive to
E. Twin Lake. Finish ch.

E. From Hub 328.4 E

on N side sec 35-

 $328.4 + 240.80 = 569.20$

R.R. spike Hub

 $569.20 + 288.0 = 857.2$

R.R. spike Hub in between

Rails of M & I R.R. Tract

Note: This hub is not in

center of Tract but close
to E rail

 $@ 569.20 + 300 = 869.2 E$

P.in + 300 = 1169.20 E pin

 $1169.20 + 30.3 = 1199.5 E$

R.R. spike Hub

 $1169.20 + 99.8 = 1269.0 E$

R.R. spike Hub on sea wall

3 ft W of Water

From Hub 1269.0 E M.C.

Copied in book 243-

Cham. N. 81.

136-29

7

E. Twin Lake

I. M. into N 1.80

Corrections

1269. into 1.80

~~N 1.80~~

1269. ~~1.800~~

~~1269~~

5310

5076

2340

1269

10710

10152

558

328

300

300

30

958

1269

1418

10152

1269

50.76

1269

1.799442

328.4

240.8

569.2

328.4

288.0

616.4

123

1269

4

5076

1269

11421

1269

8

10152

8

Nix

Corrections

. 001418 N for each ft. E

Hub 328.4 E goes N .47

" 569.2 E " N .81

" 857.2 E " N 1.22 ✓

" 1199.5 E " N 1.70 ✓

" 1269.0 E " N 1.799

Nix

²³⁴³
3284⁵⁷
569.2^{4E}
857.214181418141.8

26272

4553668576

3284

5692

8572

13136

5692

8572

3284

22768

34288

465671256928572

807125612165096

³⁷³⁷²
1199.51418

95960

119.95

47980

11995

17068910

E Twin Lake

9

136.29

Aug 2 1939

something haywire
Rechain.

Hut 328.4 O.K.

Hut 569.2 O.K.

Hut 857.2 Nix should
be 616.4

From Hut 328.4 + 300

628.4 pin + 300 = 928.4
pin

928.4 + 30.3 = 958.7 hut

928.4 + 99.8 = 1028.2 hut

corrects N 1.80 O.K

O.K

Corrections

1028.2 into 1.80 = .00175, O.K

over

Copied in book 245-

10

136-29

Aug. 2-1939

.0017506 O.K.

1028.2

1.8000

10282

77180

71974

52060

51410

6500

1028.2

175

51410

71.974

10282

17993500K

each foot E goes N. 00175

Hub 328.4 E " N .57

" 569.2 E " N .996 on 1.Ft

" 616.4 E " N 1.08

" 958.7 E " N 1.68

" 1028.2 E " N 1.799 Total

O.K.

Copied in book
245-

136-29

11

328.4

175-

16420

229.88

3284

574700

6164

175-

30820

43148

6164

1078700

569.2

175-

28460

398.44

5692

996100

9587

175-

47935-

67109

9587

1677725-

Note: We do Not correct
this but use Random

First Random OK. Hls

1.80 Si y Knudsen in

IM is 1.80 to for N.

Cur

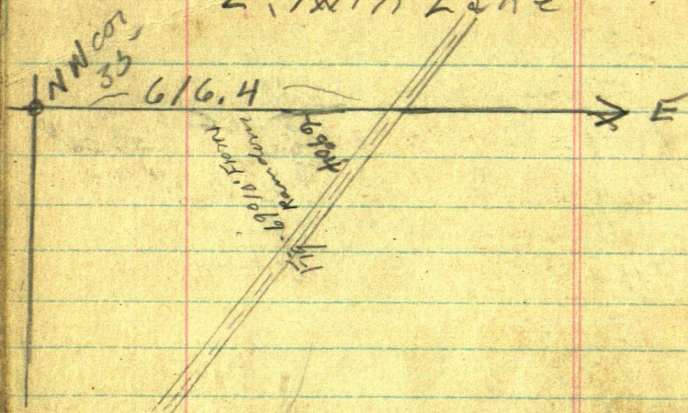
Copied in Book

245-

12

136-29

E. Twin Lake



Over Hub 616.4 between rail
of RR tract the S W angle
reads $69^{\circ}04'$

Tract runs $N 20^{\circ}55' E$

Reading SW angles

- 1st 69.14
- 2nd $138^{\circ}08'$
- 3rd
- 4th
- 5th
- 6
- 7

Copyied in
Book 245

E. Twin Lake

136.29

13

From Hub 616.4 chain

E 88.6 = 705. hub on street

Line 33 ft E of R of W. of M & I

705-

175-

3525-

4935

705-

1,23375-

Copied in book

243-

Silver Sands Ryan

15

406	100	489.5	20	100
	175	483.3	19	125
	100	477	18	100
	100	468.8	17	"
		468.5	16	100
		472.3	15	"
		475.6	14	"
		478	13	"
		481.2	12	"
		482.8	11	100
		489.6	10	"
		486.6	9	"
		490.6	8	"
		487.6	7	"

N 38° W 2621.25

77	66	83.5	6	100
76	66	83.5	5	100
75	66	83.5	4	100
74	66	83.5	3	100
73	66	83.5	2	100
72	66	83.5	1	100
71	66	83.5	0	100
70	66	83.5	-1	100
69	66	83.5	-2	100
68	66	83.5	-3	100
67	66	83.5	-4	100
66	66	83.5	-5	100
65	66	83.5	-6	100
64	66	83.5	-7	100
63	66	83.5	-8	100
62	66	83.5	-9	100
61	66	83.5	-10	100
60	66	83.5	-11	100
59	66	83.5	-12	100
58	66	83.5	-13	100
57	66	83.5	-14	100
56	66	83.5	-15	100
55	66	83.5	-16	100
54	66	83.5	-17	100
53	66	83.5	-18	100
52	66	83.5	-19	100
51	66	83.5	-20	100
50	66	83.5	-21	100
49	66	83.5	-22	100
48	66	83.5	-23	100
47	66	83.5	-24	100
46	66	83.5	-25	100
45	66	83.5	-26	100
44	66	83.5	-27	100
43	66	83.5	-28	100
42	66	83.5	-29	100
41	66	83.5	-30	100
40	66	83.5	-31	100
39	66	83.5	-32	100
38	66	83.5	-33	100
37	66	83.5	-34	100
36	66	83.5	-35	100
35	66	83.5	-36	100
34	66	83.5	-37	100
33	66	83.5	-38	100
32	66	83.5	-39	100
31	66	83.5	-40	100
30	66	83.5	-41	100
29	66	83.5	-42	100
28	66	83.5	-43	100
27	66	83.5	-44	100
26	66	83.5	-45	100
25	66	83.5	-46	100
24	66	83.5	-47	100
23	66	83.5	-48	100
22	66	83.5	-49	100
21	66	83.5	-50	100
20	66	83.5	-51	100
19	66	83.5	-52	100
18	66	83.5	-53	100
17	66	83.5	-54	100
16	66	83.5	-55	100
15	66	83.5	-56	100
14	66	83.5	-57	100
13	66	83.5	-58	100
12	66	83.5	-59	100
11	66	83.5	-60	100
10	66	83.5	-61	100
9	66	83.5	-62	100
8	66	83.5	-63	100
7	66	83.5	-64	100
6	66	83.5	-65	100
5	66	83.5	-66	100
4	66	83.5	-67	100
3	66	83.5	-68	100
2	66	83.5	-69	100
1	66	83.5	-70	100
0	66	83.5	-71	100
-1	66	83.5	-72	100
-2	66	83.5	-73	100
-3	66	83.5	-74	100
-4	66	83.5	-75	100
-5	66	83.5	-76	100
-6	66	83.5	-77	100
-7	66	83.5	-78	100
-8	66	83.5	-79	100
-9	66	83.5	-80	100
-10	66	83.5	-81	100
-11	66	83.5	-82	100
-12	66	83.5	-83	100
-13	66	83.5	-84	100
-14	66	83.5	-85	100
-15	66	83.5	-86	100
-16	66	83.5	-87	100
-17	66	83.5	-88	100
-18	66	83.5	-89	100
-19	66	83.5	-90	100
-20	66	83.5	-91	100
-21	66	83.5	-92	100
-22	66	83.5	-93	100
-23	66	83.5	-94	100
-24	66	83.5	-95	100
-25	66	83.5	-96	100
-26	66	83.5	-97	100
-27	66	83.5	-98	100
-28	66	83.5	-99	100
-29	66	83.5	-100	100
-30	66	83.5	-101	100
-31	66	83.5	-102	100
-32	66	83.5	-103	100
-33	66	83.5	-104	100
-34	66	83.5	-105	100
-35	66	83.5	-106	100
-36	66	83.5	-107	100
-37	66	83.5	-108	100
-38	66	83.5	-109	100
-39	66	83.5	-110	100
-40	66	83.5	-111	100
-41	66	83.5	-112	100
-42	66	83.5	-113	100
-43	66	83.5	-114	100
-44	66	83.5	-115	100
-45	66	83.5	-116	100
-46	66	83.5	-117	100
-47	66	83.5	-118	100
-48	66	83.5	-119	100
-49	66	83.5	-120	100
-50	66	83.5	-121	100
-51	66	83.5	-122	100
-52	66	83.5	-123	100
-53	66	83.5	-124	100
-54	66	83.5	-125	100
-55	66	83.5	-126	100
-56	66	83.5	-127	100
-57	66	83.5	-128	100
-58	66	83.5	-129	100
-59	66	83.5	-130	100
-60	66	83.5	-131	100
-61	66	83.5	-132	100
-62	66	83.5	-133	100
-63	66	83.5	-134	100
-64	66	83.5	-135	100
-65	66	83.5	-136	100
-66	66	83.5	-137	100
-67	66	83.5	-138	100
-68	66	83.5	-139	100
-69	66	83.5	-140	100
-70	66	83.5	-141	100
-71	66	83.5	-142	100
-72	66	83.5	-143	100
-73	66	83.5	-144	100
-74	66	83.5	-145	100
-75	66	83.5	-146	100
-76	66	83.5	-147	100
-77	66	83.5	-148	100
-78	66	83.5	-149	100
-79	66	83.5	-150	100
-80	66	83.5	-151	100
-81	66	83.5	-152	100
-82	66	83.5	-153	100
-83	66	83.5	-154	100
-84	66	83.5	-155	100
-85	66	83.5	-156	100
-86	66	83.5	-157	100
-87	66	83.5	-158	100
-88	66	83.5	-159	100
-89	66	83.5	-160	100
-90	66	83.5	-161	100
-91	66	83.5	-162	100
-92	66	83.5	-163	100
-93	66	83.5	-164	100
-94	66	83.5	-165	100
-95	66	83.5	-166	100
-96	66	83.5	-167	100
-97	66	83.5	-168	100
-98	66	83.5	-169	100
-99	66	83.5	-170	100
-100	66	83.5	-171	100
-101	66	83.5	-172	100
-102	66	83.5	-173	100
-103	66	83.5	-174	100
-104	66	83.5	-175	100
-105	66	83.5	-176	100
-106	66	83.5	-177	100
-107	66	83.5	-178	100
-108	66	83.5	-179	100
-109	66	83.5	-180	100
-110	66	83.5	-181	100
-111	66	83.5	-182	100
-112	66	83.5	-183	100
-113	66	83.5	-184	100
-114	66	83.5	-185	100
-115	66	83.5	-186	100
-116	66	83.5	-187	100
-117	66	83.5	-188	100
-118	66	83.5	-189	100
-119	66	83.5	-190	100
-120	66	83.5	-191	100
-121	66	83.5	-192	100
-122	66	83.5	-193	100
-123	66	83.5	-194	100
-124	66	83.5	-195	100
-125	66	83.5	-196	100
-126	66	83.5	-197	100
-127	66	83.5	-198	100
-128	66	83.5	-199	100
-129	66	83.5	-200	100
-130	66	83.5	-201	100
-131	66	83.5	-202	100
-132	66	83.5	-203	100
-133	66	83.5	-204	100
-134	66	83.5	-205	100
-135	66	83.5	-206	100
-136	66	83.5	-207	100
-137	66	83.5	-208	100
-138	66	83.5	-209	100
-139	66	83.5	-210	100
-140	66	83.5	-211	100
-141	66	83.5	-212	100
-142	66	83.5	-213	100
-143	66	83.5	-214	100
-144	66	83.5	-215	100
-145	66	83.5	-216	100
-146	66	83.5	-217	100
-147	66	83.5	-218	100
-148	66	83.5	-219	100
-149	66	83.5	-220	100
-150	66	83.5	-221	100
-151	66	83.5	-222	100
-152	66	83.5	-223	100
-153	66	83.5	-224	100
-154	66	83.5	-225	100
-155	66	83.5	-226	100
-156	66	83.5	-227	100
-157	66	83.5	-228	100
-158	66	83.5	-229	100
-159	66	83.5	-230	100
-160	66	83.5	-231	100
-161	66	83.5	-232	100
-162	66	83.5	-233	100
-163	66	83.5	-234	100
-164	66	83.5	-235	100
-165	66	83.5	-236	100
-166	66	83.5	-237	100
-167	66	83.5	-238	100
-168	66	83.5	-239	100
-169	66	83.5	-240	100
-170	66	83.5	-241	100
-171	66	83.5	-242	100
-172	66	83.5	-243	100
-173	66	83.5	-244	100
-174	66	83.5	-245	100
-175	66	83.5	-246	100
-176	66	83.5	-247	100
-177	66	83.5	-248	100
-178	66	83.5	-249	100
-179	66	83.5	-250	100
-180	66	83.5	-251	100
-181	66	83.5	-252	100
-182	66	83.5	-253	100
-183	66	83.5	-254	100
-184	66	83.5	-255	100
-185	66	83.5	-256	100
-186	66	83.5	-257	100
-187	66	83.5	-258	100
-188	66	83.5	-259	100
-189	66	83.5	-260	100
-190	66	83.5	-261	100
-191	66	83.5	-262	100
-192	66	83.5	-263	100
-193	66	83.5	-264	100
-194	66	83.5	-265	100
-195	66	83.5	-266	100
-196	66	83.5	-267	100
-197	66	83.5	-268	100
-198	66	83.5	-269	100
-199	66	83.5	-270	100
-200	66	83.5	-271	100
-201	66	83.5	-272	100
-202	66	83.5	-273	100
-203	66	83.5	-274	100
-204	66	83.5	-275	100
-205	66	83.5	-276	100
-206	66	83.5	-277	100
-207	66	83.5	-278	100
-208	66	83.5	-279	100
-209	66	83.5	-280	100
-210	66	83.5	-281	100
-211	66	83.5	-	

16

Silver Sands

26°30'

Cosine 89493

$$89493 \div 3300000 = .2$$

Cotang 2006

2006

165

10030

12036

2006

330990

Tang

$$33 \overline{) 16.5} = .5$$

$$340 \overline{) 16.5} = .4125$$

$$\begin{array}{r} 30 \\ 14 \overline{) 30} \\ 100 \end{array}$$

22°30'

$$92388 \overline{) 3860000} = .4$$

Silver Sands 17

$$\begin{array}{r}
 326 \quad .473 \\
 34,9 \overline{) 16,50} \\
 \underline{13} \quad 76 \\
 2540 \\
 \underline{24} \quad 43 \\
 970
 \end{array}$$

$$\begin{array}{r}
 25^{\circ} 20' \quad 38.7 \\
 90.383 \quad 4421 \quad \overline{) 3509000} \\
 \underline{271149'} \\
 788510 \\
 \underline{723064} \\
 654460 \\
 \underline{542298} \\
 112162
 \end{array}$$

136-29

317 19

E Twin Lake

29.8-184.45

Aug 5 1939

Wilford + I in my car
JWC in his car drive
to E Twin Lake - From Hub
616.4 on R.R. Track N side see
35-

Chain E 88.6 to 705.0 E
on N side of see 35-

to hut on street line 33 ft E
of R.R. R of W

From hub 705.0 E chain
South on E side of street
at 29.8 hut

@ 184.45 "

@ 300 ~~E~~ of road W + NE

@ 319.8 hut

@ 454.4 hut

@ 528.8 "

@ 661.0 "

@ 893.0 "

@ 1085.3 " E of Road NWSE

@ 1201.3 "

@ 1354.65 "

Copied back 243-

300
228.4

20

300
154.2
145.8
1440

136-29

Copy in book 245-

1440 stake + 145.8 - 1585.8

Hub & Tract - M+I
PM

Wilferd + I - JWC
Lv at noon in his car
will be back later

We use the E line of
street which is 83
ft E of & M&I R.R.
Tract for a base
and call it N+S

⌵ over hub 184.45-5
B.S. N Turn

90° R and run 68 & Road

N-E-SW @ 145.5- hub on sec PT A
wall. 15 ft W of ramp N-E-S

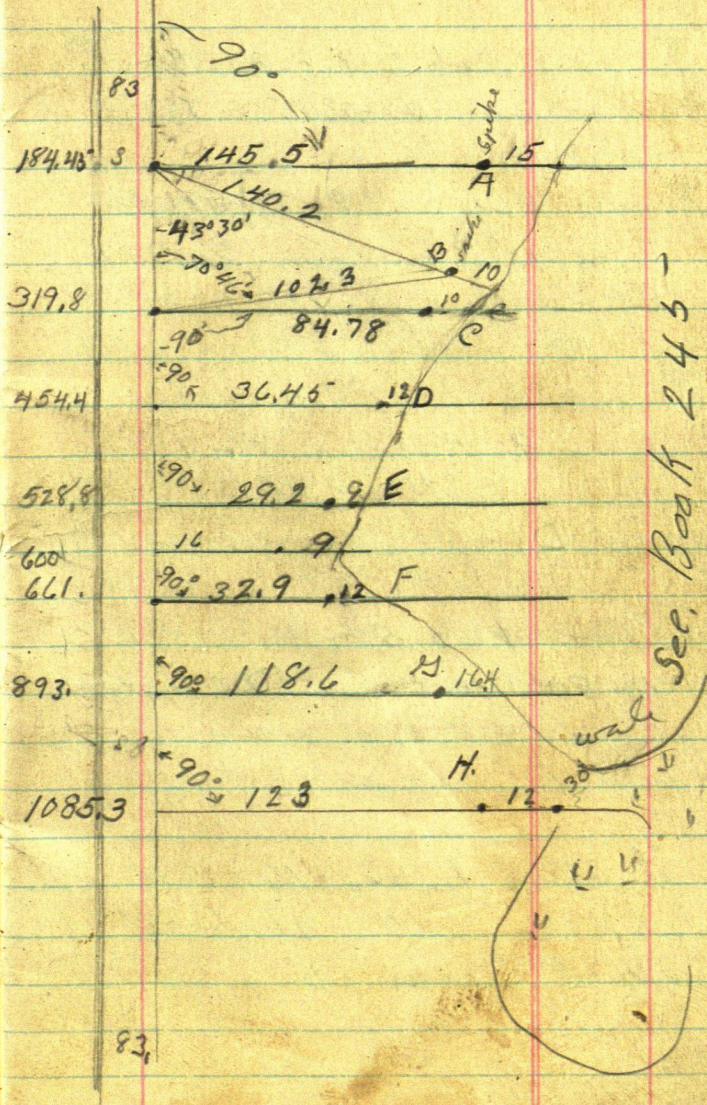
⌵ still at hub 184.45- run
S 43°30'E - 55 & road
@ 140.2 RR spike on sec wall PT B
10 ft W of water

E. Twin Lake

136-29

21

N



22

E Twin Lake

136-29

↗ over Hub 319.8 B.S. Non Line
and run N 70° 46' E 102.3 to
point B.

↗ over Hub 319.8 B.S. North
Turn 90° R and run 84.78 to
RR spike on seawall point C
10 ft W of water

↗ over Hub 454.4 B.S. North
Turn 90° R & run 36.45 Hub
on sea wall 12 ft W of water
point D

↗ over Hub 528.8 B.S. N
Turn 90° R and run 29.2 spike on
seawall 9 ft W of water
point E

at 6005 Hub - 16 ft
to top of seawall 20 ft of
seawall water 25

17th Book 243

136-29

23

⌈ over hub 661 B.S. N Turn
90° R and run 32.9 hub 42 foot
on seawall 12 ft W of water point
Point F.

⌈ over hub 893 B.S. North
Turn 90° R and run 118.6 hub
on seawall 130 foot slope 135°
water Point G

⌈ over hub 1085.3 backsite
N Turn 90° R and run
123.0 hub 135.0 hub solid marsh
Water NE 30 ft. marsh SE 100+
sloping shore no seawall

Copied in Book

243-

24

520

E Twin 136-29

955+31.0

25

944 432

937 250

7.182

1097.8

1119.38

944+432

955 31.0

944 432

1087.8

7182

1806.0

P.T.

718.2

pc

937+25.0

301.3

937 25.0

934 23.7

301.3

934+23.7

520.0

929+03.7

934 23.7

929 03.7

520.0

D

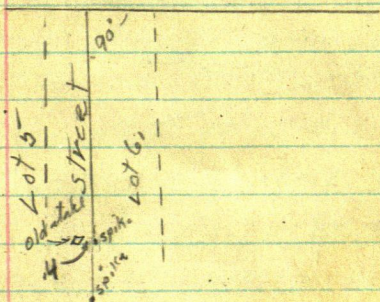
Silver sands

27

Aug 7. 1939

Wilfred and I to Jenkins
@ 7:45 in my car drive to
Silver sands

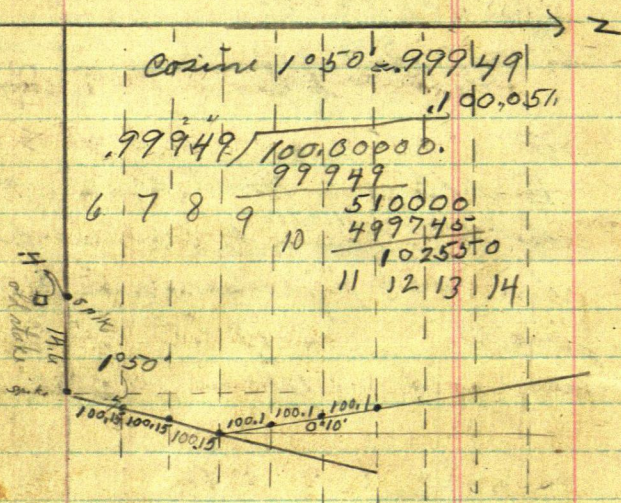
Move SW cor Lot 6 backsite
on Flag at NW cor Lot 20 Turn
90° and run
E between Boat street and
lot 6 (I am ^{Note} calling the back lot
line N & S) "it does run N 38° W"



our line between the street and
lot 6 runs 40 N of old 2x2 inch
whistake as I can not get
a very long run along the
lake from here I continue
our line East 146 ft and

28 Silver Sands
Ryan

set a mother spike hub



From this hub 14.6 E of old stake
We run N 1°50' E

@ 100.051 $\pm .10$ = 100.15 set hub
for cor between lot 667 on high bank
ft from brink

@ $200.10 + 10 = 200.20$ net but for cor
let lots 7+8 - 10 ft from Brink

Silver Sands
③ Ryan

29

@ $300.15 + .10 = 300.25$ set spike for
cor between lots 8 and 9 -
10 ft from brink

π over hut between 8 + 9 back
site $S 10^{\circ} 50' W$ and try to get one
more lot but it will come to
close to the brink of high bank
so have to change it. to run
parallel to back of lots I hit some
trees so have to run $N 0^{\circ} 10' W$
to get there

Cosine of $0^{\circ} 10' = 1.$

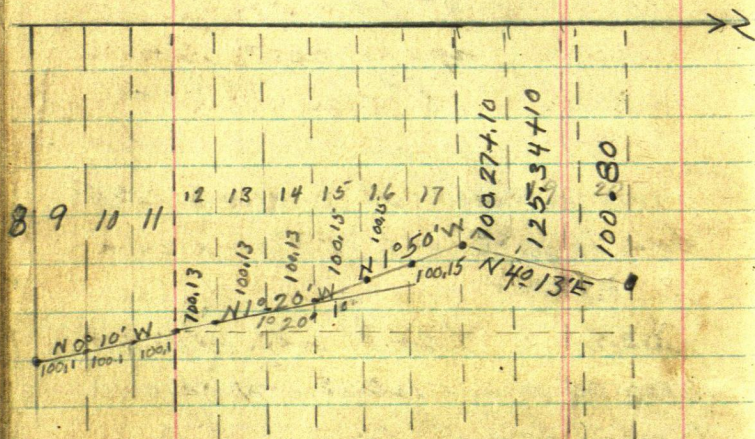
so I will chain 100.1 and set spike
for the cor to lots 9 + 10 - 6 ft from brink

@ $200.00 + .20$ spike for cor to lots 10 + 11
10 ft from brink

@ $300.00 + .30 = 300.30$ spike cor
bet. lots 11-12 - 6 ft from brink

④

back side $S 0^{\circ} 10' E$ and run $N 1^{\circ} 20' W$



1020' Cosine .99973

100.027

$$\begin{array}{r} 99973 \overline{) 10000000} \\ \underline{99973} \end{array}$$
$$\begin{array}{r} 270000 \\ 199946 \\ \hline 700540 \\ 699811 \\ \hline 729 \end{array}$$

From spike car to dots 11 + 12

RUN $N 1^{\circ} 20' W$

@ $100.027 + .10 = 100.127$ spike cor

Silver Sands
Carl Ryan

31

to lots 12 & 13 - 6 ft from Brink
200.23 spike cor to lots 13
and 14 - 6 ft from Brink
@ 300.33 spike cor to lots 14
and 15 - 7 ft from Brink

⌒ over hut cor to lots 14 & 15
back site S $1^{\circ}20'$ E and run
N $1^{\circ}50'$ W

Cosine = .99949 see page 28

$100.05 + .10 = 100.15$ spike
cor to lots 15 - 16 - 7 ft from
Brink

200.30 spike cor to lots
16 - 17 - 7 ft from Brink

$200.20 + .05 + .10 = 200.35$ spike
cor to lots 17 - 18

⌒ over spike cor to lots 17 - 18
back site S $1^{\circ}50'$ E and run

32 Silver Sands ⑥

N 4° 13' E to NE cor
lot 20.

Cosine 4° 13' = 99

4° 10' = 99736

4° 11' 997338

12 997316

13 997294

14 997272

15 997250

16 997228

17 997206

18 997184

19 = 997162

4° 20' = 99714

Cosine 4° 13' = 997294

997294 $\sqrt{100.27}$
100000000
997294

2706000
1994588

7114120
6981058
133062

Silver Sands

⑦

Ryan

33

From spike cor to lots 17-18
run N 41° 3'

100.27 + .10 to cor to lots 18-19

$$\begin{array}{r}
 125.34 \\
 997294 \overline{) 125000000} \\
 \underline{997294} \\
 2527060 \\
 \underline{1994588} \\
 5324720 \\
 \underline{4986470} \\
 3382500 \\
 \underline{2991882} \\
 3906180
 \end{array}$$

From spike cor to lots
18-19 chain 125.34 + .10 =
125.44 To cor to lots 19-20

from cor to lots 19 + 20
the NE cor of lot 20 is
100.80 should be 100.37

34 Silver Sands
Ryan⁸

Carl Ryan comes out
looking for J.W.C. not
here in Walker

Carl wants line between
lots 18 and 19 started so
the owner can get his line
so I set π over the
N.E. cor of Lot 18 Foresite
for longer site $N 4^{\circ} 13' E$
on the N.E. cor of Lot 20
Turn back to 0° for check
then on to 90° and start
cutting West the line
will hit the Garage so
stop and come home

36

Ryan 10

136-29 $\frac{616.40}{77}$
E. Twin Lake 615.63

37

Aug 9, 1939

Wilfred and I to Jenkins
7.45 drive to E. Twin Lake
in my car.

⌞ over hub 569.2 back
sit W on our random
line which we will call
True line and set
a 10d nail in a tie on
E R.R. Tract half way
between the rails. Note:—
this nail is .77 West of
RR spike hub 616.40 E
making it 615.63 E of NW
cor of sec 35

From this nail 615.63
E we chain South along
E of track 1087.8 to pt of
Tan. see page 25 this book.

From nail 615.63 E on
N side sec 35 chain S
on E of track @ 300 pin
@ 311 E & crossing
@ 600 pin @ 900 pin

38

E. Twin Lake

136.-29

$$900 + 187.8 = 1087.8$$

R.R. Spike Hub in Tract
between rails put in by
chain

This spike is where the
curve of the Tract stops
commencing from the South
or where it starts coming
from the North

From this hub we enter
curve and set spikes
every 25 ft in center
of track half way between
rail all set with chain

25 spike

L

25 spike

L

25 "

L

25 "

L

25 + on tie

L

25 + " "

L

25 + " "

L

25 + " "

L

	25- spike	L
	25- "	L
	25- "	L
	25- + on tie	L
	25- spike	L
	26- + on tie	L
	25- spike	L
400	25- "	L
	25- + on tie	L
	25- spike	L
	25- "	L
500	25- + on tie	L
	25- spike	L
	25- + on tie	L
	25- + " "	L
600	25- spike	L
	25- spike	L
	25- spike	L
	25- + on tie	L
700-	25- spike	L
700 + 18.2 = 718.2 + on tie		
P. of C.		

40

E Twin Lake

136-29

⌘ over spike Hub in E Tract
 1087.8 S of N line sec 35
 back site N on hub 615.63
 E on N line and read angles
 to spike in curve of track
 spikes in center line of
 rail in curve every 25 ft
 called sta's.

hub 1087.8 called sta(0)
 the line between hub
 615.63 on N side sec
 and sta(0) called N to S

⌘ over Sta No.	Sta No	bears	distance from ⌘
0	1	S 0° 20' E	25 ft
	2	S 0° 36' E	50 "
	3	S 1° 04' E	74.98
	4	S 1° 45' E	99.98
	5	S 2° 21' E	124.96
	6	S 2° 53' E	149.90
6	Backsite N 2° 53' W and run		
6	7	S 6° 37' W	25 ft
	8	S 7° 06' W	50 ft
	9	S 7° 37' W	74.99

136-29

41

π over sta	Sta No	bears	distance from π
6	10	S 8° 12' W	99.98
	11	S 8° 47' W	124.95
	12	S 9° 21' W	149.94
12	backsite N 9° 21' E and run		
12	13	S 13° 35' W	25
	14	S 14° 13' W	50
	15	S 14° 46' W	74.99
	16	S 15° 15' W	99.99
	17	S 15° 45' W	124.95
	18	S 16° 18' W	149.94
18	backsite N 16° 18' E and run		
	19	S 20° 07' W	25
	20	S 20° 47' W	50
	21	S 21° 22' W	75
	22	S 21° 59' W	99.98
	23	S 22° 29' W	124.95
	24	S 22° 58' W	149.94
24	backsite N 22° 58' E and run		
24	25	S 26° 37' W	25
	26	S 27° 27' W	50
	27	S 28° 09' W	75
	28	S 28° 43' W	99.98
	29	S 29° 07' W	118.18 end

136-29

42 E, Twin Lake.

check angle of R.R. Tract
with N line of sec 25⁻
read $69^{\circ}10'$ OK same as
we figured

π over hub 1087.8 S in \angle
of Tract at P. of Tarr backsite
on hub 615.63 E in \angle of RR
on N side sec 35⁻

Turn 90° R and run E
to E side of street set two
spikes for string intersection

π over hub 1085.3 in \angle of road
on E side of street 83 ft E of \angle RR.
Tract backsite north and
run south and set a spike
for True intersection of the
street line and the end of Curve
of R.R. tract chain E from
 \angle RR Tract and find my
intersection hub .33 short
of 82.67 E and 34.75

Gallen 1085.3 + 136.29 = 1120.05
 34.75 1119.38
 1120.05 .47

43

E. Twin Lake

S of Hub 1085.3

$1085.3 + 34.75 = 1120.05$

should be 1119.38

making intersection but
 .67 of a foot to far S and .33
 to far W

Go cut brush along
 seawall until 550

Go home

44

⑪

Silver

Assuming 20 in
 L & 6 Called 'East' and
 Chain 'West' 14.6

Buff Tour 0:0. in
 N 1° 50' W

In

11 00.151

~~Can 99949~~ 100.100
 999

99949 100.100
 99949

151.000

99949

5105.10

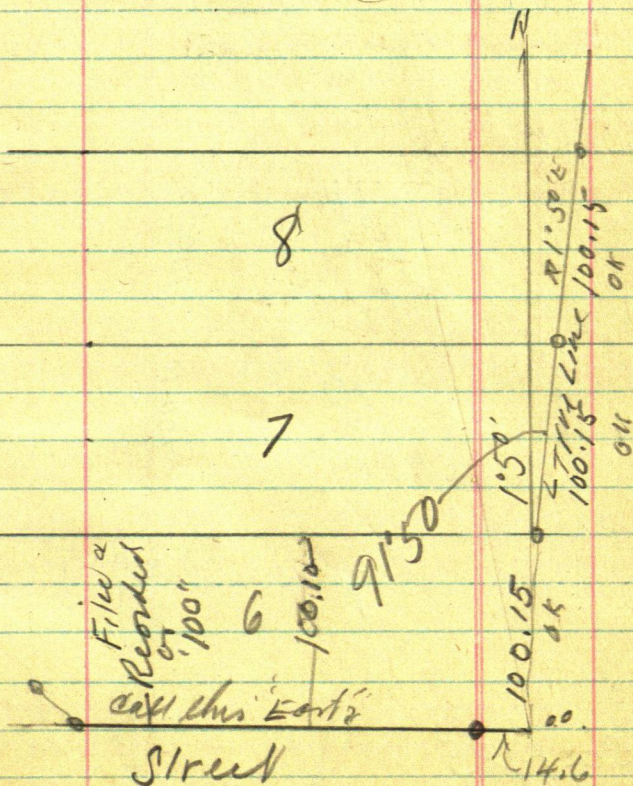
499745

10.7650

12 Ryan

August 14-1939

Haired-Wilfred and
JWC. Checking
Lake Shore Silver
Punch



46 1°23 Silver Sands
 cor-99973 (13)
 100.13

99973/100.100.
99973
 127000.
99973
 270270

11

10

9

See P 935

8

100.10

100.10

100.10

100.10

100.13
 11.50' N

2°0'

Silver Sands

(17)

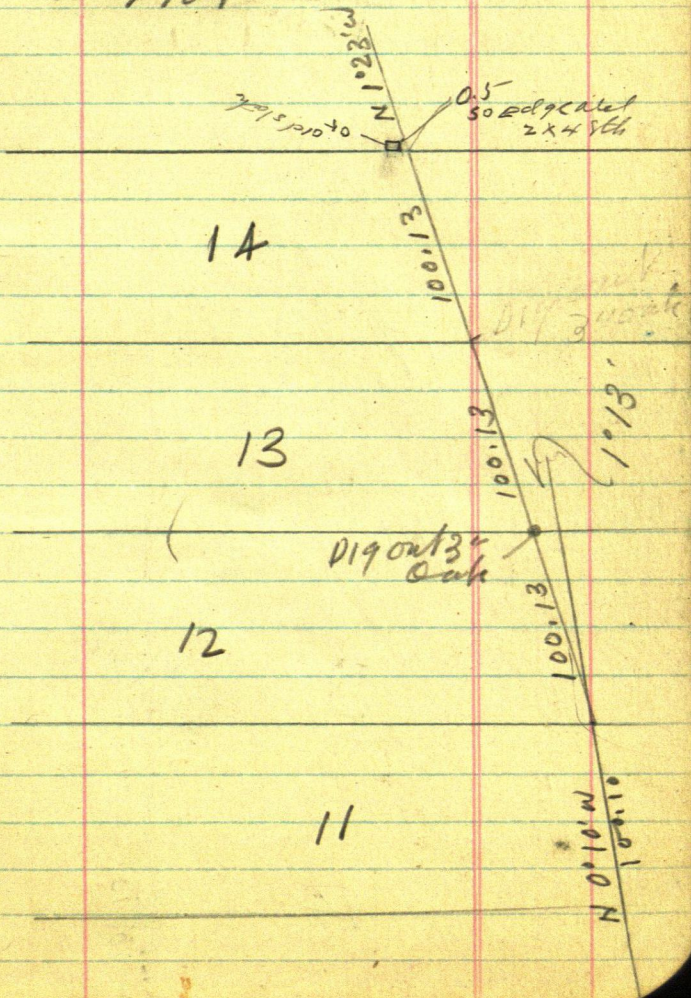
47

From Cor 6-7 Run

N 0° 10' W - 100.1.

Line

Cr Flat

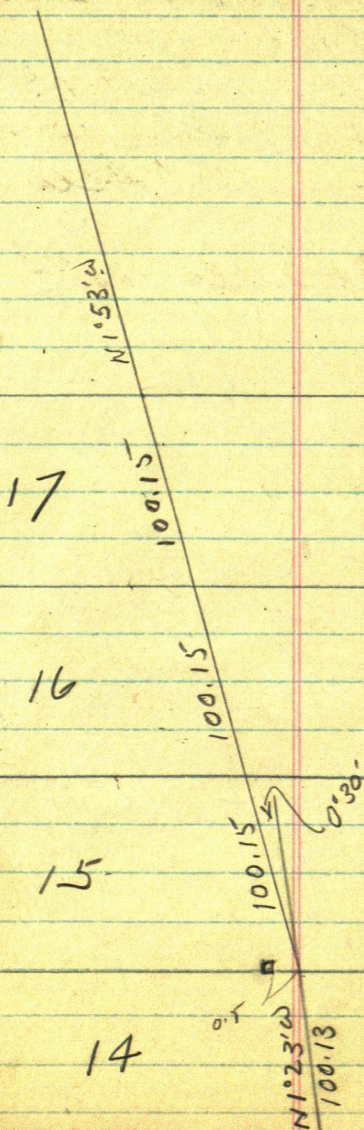


Silver Sands

48

(15)

125.43



Silver Sands

(16)

49

Doremen E.O.

Einer

~~25~~ 3533 - 45 Acres

Nyphr. Aug 14-1939

Lat 18- Silver Sands

Coastline - 19-7-.....

50

Silver Sands

4' 10"
1 3

4' 10"

cm: 99736

(17)

4

100.365

99736) 100.10.0

99736

36400.0

299208

6479.20

598416

495040

Blue line pol by Ryan
830.

N 40' 10" E

20

100.36.5
100.36.5

Costella

19

125.43+
125.4 1/2E. O. (Einer. O.)
SORENSEN

4 Gary

18

100.36.5
6.0.3
100.36.5Red lines 1. to 6. pol
By Sorensen - Costella

E. O. Sorensen 815.

100.11
100.11

16

Silver Sands

~~9993~~ (18) 125.431

57

99.736) 125.100

99.736

253640

199472

125.43

100.365

225.795

541680

498680

430000

398944

310560

299208

11352

HH HH HH

OK. Set

100.36 falls 0.20 N of TM

at NE in Lot 2-20

Each Lot Loser 0.01

of a foot

+5

15

25

225

100.33

125.41

225.74

All front lots check
out 0.07 of a foot over size

52 Silversands

(19)

Aug 14, 1939

P.M.

Wilford and I in
my car drive to
Silversands and
run lot lines

⌒ over I.M. cor to Lots
18-19 on street line
in back of lots
turn 90° and run
between lots 18-19
do not chain

set R.R. spikes along
line set 8 R.R. spikes
set one at NE cor
of building line
misses it .60 of a foot

⌒ over I.M. cor to Lots
19-20 on street line at
back of lots B.S. south
to SW cor lot 6 Turn
a 90° angle and run

Silver Sands

53

(20)

E to I M between lots
19 & 20 on the lake
set about 8 RR spike
on true lot line

NOTE

on the lot line between
18 and 19 we can not
see from one I M to
the other I M. so work
on line between the
two I M.

on the lot line between
19 & 20 the same thing

over the S E cor I M
of lot 17 Back site
S to S E cor lot 6 Turn
90° and run the lot
line between lots 16-17
after it is cut out I
can see the S W cor lot
17 so we rack in 5
spikes on True Line between

54 Silver Sands

(21)

lots 16-17. set
short stakes by these
spike Do not
set stake by the spike
on lot lines between
lots 19-20 or 18-19
do not take time as
it is after 7 o'clock,
and the owners have
seen the spike and
say they will mark
them themselves but
they are not around
When we saw the line
between 16-17 row
set the wooden stakes
by the spikes

56 E Twin Lake
136-29

Aug 15 1939

Wilfred and I in
my car leave a little
after 8 o'clock and
drive to E. Twin Lake

⌒ over RR Spike
on street line back
of lots 1120.05' ft S of
N Line of sec 35'
and at 90° to RR Tract
82.67 E of §.

Hub set by intersection
chained after

Back site N and run
in curve the same as
RR curve, see page 40
this book

Will call this hub Sta
(10) the same as we did on
the Track.

136-29
E. TRIM

57

Run curve as follows

Point	Sta No	bearing	dist to P	bet Sta
Point (O)	1	S. 0° 20' E	25	25
" "	2	S 0° 36' E	50	25
" "	3	S 1° 04' E	74.98	"
Sta 3 is on top of hill so have to move up				
Point Sta 3	4	S 1° 45' E	25	"
"	5	S 2° 21' E	50	"

at sta 5 we check up on the spike in \angle of track something may wire as the distance between sta 5 on \angle of track and our hub on cut out line is only 81.28 and should be 83. or at least 82.47 as when we started N G So stop until JWC gets here while waiting Wilfred and I will set spikes in the next curve.

E. Twin Lake

58

136-29

beginning at sta 29
which is P.C. see page
25 this book we chain
south in E of Track
and set R.R. spike or mark
+ when we hit a tie

From sta 29 we chain
301.3 to P.T. of next curve
then set spikes or mark +
every 25 ft. calling each
spike a sta so at 301.3
will be sta 30.

0	Sta 30	+ on N edge of Tie
25	" 31	spike
50	" 32	"
75	" 33	+ on N edge of Tie
100	" 34	spike
125	" 35	"
150	" 36	"
175	" 37	"
200	" 38	"
225	" 39	+ on N edge of Tie
250	" 40	spike

136-29

59

275 = Sta 41 + S. edge of Tie
300 = " 42 spike
325 = " 43 "
350 = " 44 + E of Tie
375 = " 45 spike
400 = " 46 spike
425 = " 47 "
450 = " 48 "
475 = " 49 + in E Tie
500 = " 50 + S. side tie
500 + 20 = 520 + in Tie
P.C. see page 25 this
book No to Lunch
12.30

P.M.

JWC did Not show up
so we work on curve
over sta. 2 B.S. N $0^{\circ}36'W$
to sta 10) Turn $90^{\circ}R$ and
aim at 83 ft spike on E side
of street
Note: $90^{\circ}R$ means E

60 Note $90^\circ R$ means E from
our base on str. track used
on this curve before on page 40
this book.

π over Sta 4 B.S. $N 1^\circ 45' W$
on sta (0) Turn $90^\circ R$
and run 83 ft spike on
E side of street line

π over sta 5 B.S. $N 2^\circ 21' W$
on sta (0) Turn $R 2^\circ 21'$ to
O or N Then $R 90^\circ$ and
run 83 ft set RR spike
for E side of street

π over Sta 6 B.S. $N 2^\circ 53' W$

136-29

2633 2942.4
1000 3349.6

E. Twin Lake

61

Aug 17-1939

Willard and I L. Jenkins
in my car drive to center
of sec 35-136-29

⌞ over old hub 3349.6 old Ch.
See book 32- Page 87

re-run West end of old
random E & W & sec 35-136-29
I passed from hub at IM center
of sec. to this hub and it checks

⌞ over old wood hub 3349.6 W
on old E & W & sec 35 B.S. E.
on random hub 2647.43 W
and run W. on old random
E & W & sec 35-136-29

Chain West from hub

$3349.6 + 6.86 = 3356.46$ R Rapids

hub $3349.6 + 20.4 = 3370$

pin $3370 + 295 = 3665$

enter bog

62 136-29

$$3370 + 300 = 3670 \text{ pin}$$

$$3670 \text{ W} + 26 = 3696 \text{ RR}$$

spike in bag

$$3670 \text{ W} + 208.6 = 3878.6$$

W RR spike on seawall

$$3670 + 212 = 3882 \text{ pin}$$

on seawall,

$$3882 \text{ W} + 2 = 3884 \text{ W}$$

water NE-SW

$$3882 \text{ W} + 300 = 4182$$

pin in edge of water

$$\text{to water } 4182 + 28.1 =$$

4210.10 RR spike but
on beach

$$4182 + 30 = 4212 \text{ W}$$

$$\text{pin.} + 148.5 = 4360.5$$

RR spike
on side
of house

$$3^{\circ}10' \text{ Cosine} = 99847 \times$$

$$\text{Sine} = 0552$$

$$\text{Tang} = 0553$$

64 E Twin Lake
136-29

Aug 18-1939

Wilfred and I in my
car drive to log cabin
on south end of E Twin
Lake (Hub. C)

Move Hub 250.10 W on
line $3^{\circ}10'$ off of our Random
Set Ver. @ $3^{\circ}10'$ R Then B.S.
on hub 4 ^(A) 210.10 Turn
to 0° then $3^{\circ}10'$ to the Left
and run 250.1 and set Hub

D. which is back on our random

Move hub (C) B.S. on A

Turn 90° and run 13.71 and
set RR spike on our first
random

Move hub D. B.S. $3^{\circ}10'$ L Then
Turn back to 0° - on True Random
just started - The spike Hub
set S 13.71 ft from hub C
is behind a Birch tree
as hub (D) is on side of hill
I have Wilfred set a backsite

471013

Fig. 1

Cosine . 99847

250.48

$$99847 \overline{) 250,100,000}$$

199694

250.1

X0552

13.80552

504060

499235

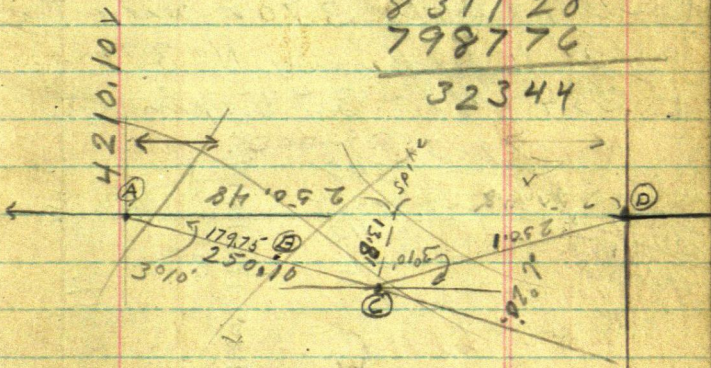
482500

399388

831128

798774

32344



about 100 ft E of hut D
and run West on true
Random.

134

From hub (D) chain W 134.00
RP spikes hub £ old road NW-SE

66

E. Twin Lake

136-29

4819.51

4930.50

Aug 18. 1939

over hut 134 W in old
road top of hill + 61 = 195
cross our cut out line
E side of Street

$$134 + 143 = 277 \text{ W } \&$$

RR Tract. (5012.51 W)

$$134 + 200 = 334 \text{ pin}$$

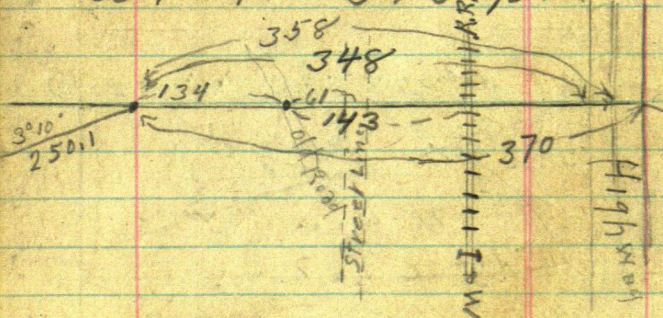
$$334 + 14 = 348 \text{ W - Edge Tar}$$

$$334 + 24 = 358 \text{ W } \& \text{ State highway}$$

$$334 + 36 = 370 \text{ W - Wedge Tar}$$

of State highway No 371

$$334 + 41 = 375 \text{ pin}$$



$$37.5 + 156.15 = 531.15 \text{ W}$$

RR spike hut about 1 ft
E of 10 inch oak tree online

68 136-29

U.S Notes

N. bet. Sec 34-35

Var 10° E

From cor in Tam'k swp

200 Leave Tam'k swp. E + W

11.40 Edge of Lake & set M.C post from
which N.P. 16 S 54 W 66

" " 18 S 10 E 164

3100 N. edge of lake set M.C. from which

N.P. 12 S 62 E 224

" " 14 N 2 W 238

4000 Set 1/4 sec Cor. from which

N.P. 12 S 30 W 40

" " 14 S 15 W 32

48.26 edge of lake set M.C.

N.P. 14 N 60 E 71

" " 14 S 15 W 32

5490 N edge of lake set M.C.

N.P. 10 N 25 W 30

Blk.P. 8 S 56 E 32

8000 the cor to be 26-27-34-35-

Blk P TS 76 W 3

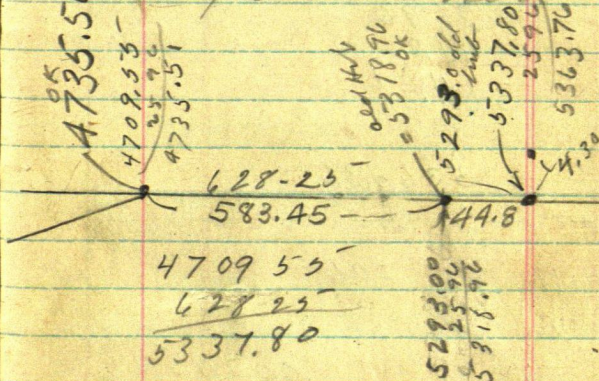
" " 8 N 50 W 20

" " 10 S 21 E 74

Nov. P. 12 N 56 E 38

Crossed the lake on ice)

Rolling 3rd rate road



see book 214-32

$$\begin{array}{r} 531.15 \\ 323 \\ \hline 583.45 \end{array}$$

$$4709.55$$

$$583.45$$

$$5293.00$$

$$\begin{array}{r} 5337.8 \\ 5293 \\ \hline 44.8 \end{array}$$

70

5355.6

5231.7

710587.2

5293.6

2594

5319.54

6337.8

2594

534376

5293.6

2594

44.8

5364.36

5364.36

4.30

2069

43

16.39

4.30

20.69

16.39

.003055

5364.36

1639000

30678

1609308

2969200

2682180

2870200

2682180

488020

$$\begin{array}{r} 3213 \\ 5364.36 \\ \underline{3055} \end{array}$$

$$2682180$$

$$2682180$$

$$1609308$$

$$\underline{163881980}$$

$$\begin{array}{r} 4260.5 \\ \underline{2596} \end{array}$$

$$536436$$

$$428646$$

$$\underline{1077.90}$$

$$428646$$

$$\underline{1077.90}$$

$$336436$$

$$\begin{array}{r} 3 \\ 1077.9 \end{array}$$

$$\underline{3055}$$

$$53895$$

$$53895$$

$$32337$$

$$\underline{32929845}$$

$$430$$

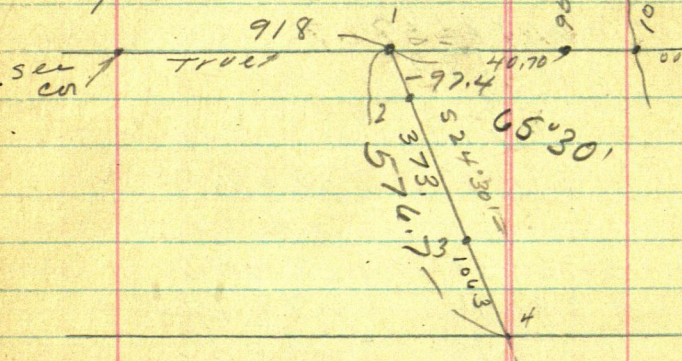
$$7.59$$

①

136-29

72. Twin Lakes
Dallam - Michallen
cont'd

Sept 13-1939 PM



Bab-Jae & JW @
work in PM.

Sept 14 - Bab-Jae & JW
at Longville

Sept 15-1939 - Bab & JW
4 am to 6-pm.

Mut Dallam & Michallen

2

Sept 15 - 1989

73

ch S. 24°30'E

slat

Sta 1 S 24°30'E 97.4 To 2

$$2: + 300 = 397.4 + 73.0 = 470.4$$

slat
3

$$3 + 106.3 = 576.7$$

$$\begin{array}{r} 97.4 \\ 300.0 \\ 73.0 \\ 106.3 \\ \hline 576.7 \end{array}$$

$$\begin{array}{r} 1028.2 \\ 918 \\ \hline 110. \end{array}$$

74

3

Sept 15-1939

Bab and I to Jenkins 4 PM
 I will use Haralds Random
 line as True Line. N. Line
 See 35-136-29, Sta 1,

174 918 East Run

S $24^{\circ}30'E$ 97.4 To Hut
 on Top = Sta 2.

+ 300 = pin + 73 = 373, added
 to 97.4 = 470.4 Sta 3.

on Top.

+ 106.3 = 576.7 To Sta 4

Sta 4 is RR. Spik Hut
 half way bet Michalson
 Collage and one owned by
 Dallan.

Michalson Bldg ~~has~~
 is built N $23^{\circ}30'E$, about.

Figures

S $24^{\circ}30'E$ 576.7 To Sta 4Sin $4147 \times 576.7 = 239.16 E$ Cor $90996 \times 576.7 = 524.77.3$

90996 (75)
576.7

636972
545976
636972
454980

524.773932

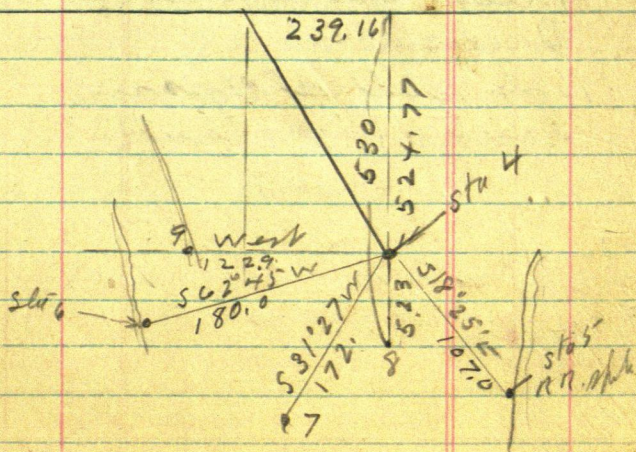
4147
5767

524.77
523

530.00

29.029
24882
29.029
20735

239.157



Sept 15 - 39 cont⁵

76

rove Sh⁽⁴⁾ Run

S 18° 25' E 107 To Sh⁽⁵⁾ at

waters RR Spk

T 4 Run S 62° 45' W 180. // To

Sh⁽⁶⁾ at waters edge west
side of Point

T 4 Run S 31° 27' W 172 To Sh⁽⁷⁾

T 4 " South 51.23 To Sh⁽⁸⁾

being 530 // so from
N Body

T 4 Run West 122.9 Sh⁽⁹⁾

= RR Spk & road n-s

T 4 Out at 6 PM

Cold - Cloudy - dark

Met Michaelson &

Dallan

Bob still sleeps in
tent on "Island"

Sept 16-1939 Sat

Cold & clear up @ 7-AM

Pick up Bob on Island

Joe Kisser & family

Leaving for Rothsay Mtn

To Bill Lymion RFD

20 miles So of Fergus Falls

We Lx Jerkin 9-AM

Meet Mr Dallan who

now Mr Michaelson wants to

run Either from Sta 4 or 8

to run "NOT West" but

not enough to give Mr

Dallan the Log Cabin

on the West side of the

point O.K. we will do it

Babs & Xone

Sta 5 BS N $18^{\circ}25'W$ on

Sta 4. Run

S.

78

162

π over Slo 5 BS on 4 Run
 N 33° W @ 80 ft Dock Extent 4 ft
 @ 137. Slo 10 = RR up at
 Water's edge E Side of Pond

π @ Slo 5 Run along along W
 water's edge

N $29^{\circ} 15'$ E @ 90 Lr sharp
 edge of Bunt 2 ft up
 entire sand flat

147 @ 162 set RR up in
 sand 2 ft west of water
 3 ft N of Michaelson
 Dock

π over Slo 11 BS

S $29^{\circ} 15'$ W on Slo 5 Run
 Foot of Hill 10 ft West
 Water's edge lies N 7° W 35 ft
 " " N 29° W 75 ft as
 N 22° W 75

= Notch in shoreline at water

At Slo 11 - Sand Beach
 runs W 20 ft West
 π @ 11 Foot of cliffs
 N 72° W 25 ft

Koves Sta (7) BSM 31'27" E on 4
Water edge N 68° W 72' N (79)
Run S 12° 29' W 118.9 T. N 6° 12'

Sta slides near 118+-

✓ 1

✓ 2

✓ 3

✓ 4

✓ 5

✓ 6

✓ 7

✓ (8) Pulled up

✓ 9

✓ 10

✓ 11

✓ 12

+3 out

✓ 14

✓ 15

✓ 16

✓ 17

18

19

20

21

80) Tower Sta 12 BSN $12^{\circ}29'E$ on 7
Wali $S 84^{\circ}15'W$ 33 ft

West side of Point

$S 63^{\circ}30'W$ 50 to 70 West side Point

$S 56^{\circ}W$ 90 to 100 on Point

$S 51^{\circ}W$ 65 Wali on E side Pt

$S 45^{\circ}W$ 25 S side Pt

$S 30^{\circ}E$ 21 " " "

$N 69^{\circ}E$ 60 // Wali on E side Pt

Just here and go north

T Back on Sta 4

BSN $24^{\circ}30'W$ - Run $S 24^{\circ}30'E$

Side 4147 X

Cor 90996 X 5.75 - 5.23 S - to

Sta 14.

Sta 14 is 53 ft Ao of N Bdry and
NE art from Sta 1.

Tower Sta 14 BSN $24^{\circ}30'W$ on
 $N 79^{\circ}W$

From Sta 14 Run $S 79^{\circ}E$

@ 12.10 Hat @ 54.20 Hat

@ 65.3 A. Edge 8" Burr Oak Leaves S.

@ 73.7 Pin pt for IM-3 ft from

Brink of Sea Wall 2 ft up and

5 ft from Wali = Sta 15

From Sta 14 @ 6410
 N 79° W
 @ 52 ft. ^{private road} ~~road~~ ^{road}

(81)

64.10 Hub @ 111.30 Hub

@ 131 Hub @ Road N-S Sta 16

@ 159.2 Hub

@ 208. pin 2 ft E

1 Water pt for Sta 17

Qunt for drive - 10m

back @ 2 - pin - drive 2m

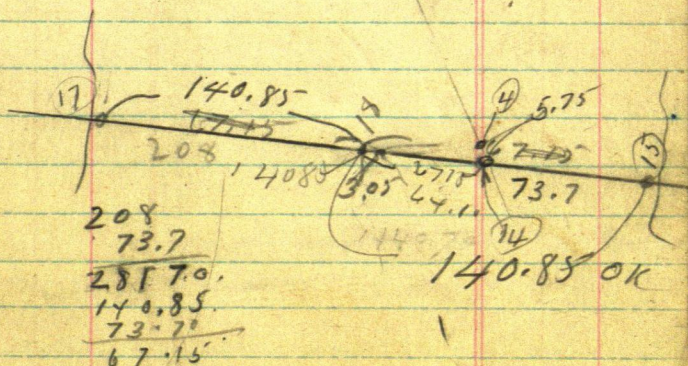
@ Sta 14 and 1210 - 54-20 set

2x12 pipe out @ @ 73.7 set 2x26

@ 111.30 + 159.2 set 12x2 at 208

set 2x26 pipe

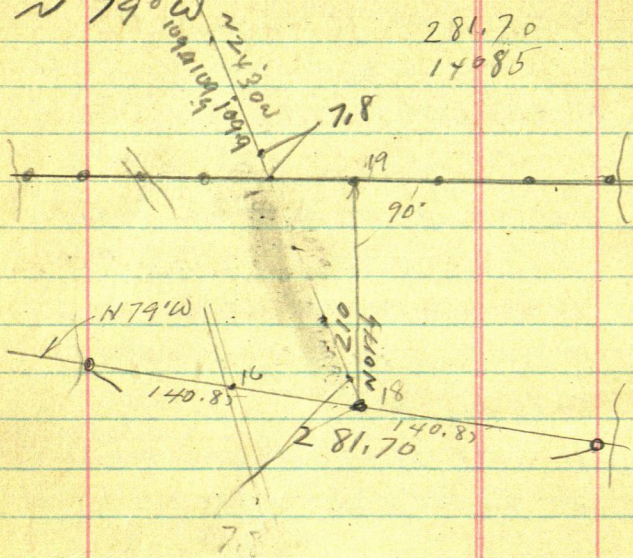
67.15
 64.10
 3.05



82

PM π over 56 14 Rm
 N 79° W

281.70
 140.85



208.00
 67.15
 140.85

73.70
 67.15
 140.85

64.10
 30.15
 67.15

(83)

PN π over Sta 14 Run N 39.° W

T // π Sta 18 Re Plat

π over Sta 18 Run

North @

@ Road NWSE

@ 87.5 Hut @ 210 Hut Sta 19

π over Sta 19 Run East

Sept 17-1939 Sunday

(84) up @ 8-30 - @ 9-30 Harold

Telephones Lowson has ready
for La Hospital 10-AM Bab
and T L Jenkins Beesli
D Ch S $24^{\circ}30'E$

Line 4147

cor 90996 in 100 = (109.90

OK

0109.894

90996) 1000.00

90996

900.400

81.8964

814.360

72.7968

863.920

81.8964

449.56

109.90

97.40

12.50

From Hubon top @ 97.4 P 72

Ch S $24^{\circ}30'E$ 12.50 T. 109.90

= 100 A0 From N. B. Luy

Sept

+ 7,100 (ok) (85)

Sept 21-1939

8-30 AM at Dalton
Figuring

24°30

Sum 4147

Cor 90.996

109.96 010
90996) 150000
90996
900400
818964

97.4
125
109.9
2
219.8
824360
818964
539600

7.85
90996
785
454980
727968
636972
7.143186
90996
78
727968
636972
7.097688

86 Sept 21-1939

10 AM Bab cuts his
Leg- Michalson gets
me ch \$35.00
with payment = 14.0.

35.00
14.00
21.00 bal.

Sept 30-1939 Sat
Bab and I got married
Boch @ 4.00 PM

87

Weston @ 35-136-29

Hub Mkd 3349.60 W +

25.96 =

3375.56 West

3349.60 W = 3375.56 W

3356.46 x 25.96 = 3382.42 W

3696.00 + 25.96 = 3721.96 W

3878.60 + 25.96 = 3904.56 W

4210.10 + 25.96 = 4236.06 W

4360.50 + 25.96 = 4386.46 W

(4389.57 + 25.96 = 4415.53 W^{ok})

(And 179.47 x Tang 0.553 = 9.93 N)

(250.10 x 99847 = 249.72)

(And 249.72 x 553 = 13.81 N)

4459.82 + 25.96 = 4485.78 W on

4709.55 + 25.96 = 4735.51

4709.55 + 583.45 =

5293.00 + 25.96 = 5318.96 old Hub

5318.96 + 44.8 = 5363.76

5363.76 - IM-W Side Sls 504.35

N.G.

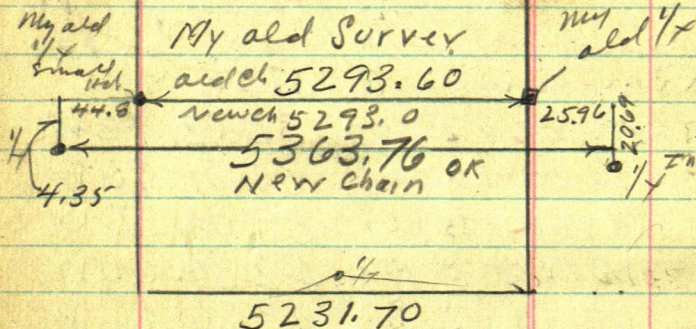
4.35

1/2

87

Sec 35-136-29

5355.50



5293.00

44.8

5337.80

25.96

5363.76

Bk 222 Pg 49-

BOOK 32 Pg 87-43-

This Book — " 61

88

3347.60
25.96
3375.56

3349.2+

Cur's
add 1/4

Pg 61 This

3375.56

3349.6 -

25.96

20.69 S

Book 32
Pg 90

Im. 2nd by
Knudsen
25.96 E and
20.69 S

Im
1/4

4.35

Wx

89

Correction = .0030462
= 305, = OK

20.69
435
16.34

Sec 35-136-29 N

5363.76 Total

EW 4

67.02
4.35
16.34

3375.56 W N E/W ✓

3382.42 W ✓

3721.96 ✓

3904.56 ✓

4236.06 —

4386.46 —

4415.53 —

4485.78 —

✓ 4735.51 ✓

✓ 4869.50 W is E/W ✓

5363.76 W = 00 E

N.G.

5363 76
3375 56
 1988.20

90

Earl gas	To Truckline
✓ 1988.2 S 6.06 + 4.35 = 10	10.41 OK
✓ 1981.34 E. gas S 6.04 + 4.35 =	10.39
✓ 11641.80 E " S 5.01 + 4.35 =	9.36
1459.20 E. S 4.45 + 4.35 =	8.80
1127.70 E " 3.44 + 4.35 =	7.79
977.3 E " 2.98 + 4.35 =	7.33 OII
948.23 E " 2.89 + 4.35 =	7.24 ^{+ 8.93 =} 17.17
877.98 E 2.68 + 4.35 =	7.03 ^{+ 13.81 =} 20.84
628.25 E 1.92 + 4.35 =	6.27 ✓
494.26 E 1.51 + 4.35 =	5.86 ✓
0.0 E gas S 0.0 + 4.35 =	4.35

NIX

NG.

91

35-19629

E W 2

Oct 1-1939 Sunday

1-30 PM - Bab and I & V

Jenkins 1.50 PM Callon
Jack Michaelson and tell
him we will have the line
Corrected at

Log 16

2-10 PM π over Hub

4415.53 W = 948.23 E

See pg 67 ⁶³ Turn S W angle

93°10' Run South 9.93 +

So 17.17 RR. spik on

7.24

17.17

Turn E-W 2

and 11.0 more Hub RR. spk

11.0 20 of line, line

 π over Hub 4485.78 W =

877.98 E BS E 3°10' S Turn

S W angle 93°10' Run Pg 63

South 13.81 Hub + 7.03 =

8

$$\begin{array}{r} 7.03 \\ 20.84 \end{array}$$

20.84 Hub Turn line

93

T

π over corrected H₀

4386.46 W = 977.3 E

SW Cor H₀ extended beam

S 46° 20' W 18.5

NE Cor H₀ beam

N 19° 15' W 10.

Oct 14-1939 Sat
W. Fred and on lunch co
Jenkin 9.0M.

9.4

(95)

1

Kamberling - Kater

18 Road

Oct ~~19~~ 1939 continued
FROM Page 112 This Rh

~~Frank~~ Frank Kamberling
called ~~last~~^{re} evening and
wants road survey.

I call John Kaler
Pine River at 9 PM ~~at~~
~~last evening~~ and he
agrees to be here
tomorrow morning
@ 8 AM.

Oct 19-1939

7:55 AM I go further
down - Drive to Kamberling
Resort. Kaler not here
asked Frank K.
and then drive back
to John for working
there.

Oct 19-1939 cont'd
Kali-Run

96

(2)

9-30 wd look over ground
Hunt field Book

2015	15
<u>66</u>	<u>90</u>
12090	90
12090	<u>990</u>
<u>1329.90</u>	1320.00
137-28	<u>49</u>

(18)

1329.9

SW SW
40 20

Lot 4
271411

2015 =
1329.9

1755

~~5770~~

1755

2015

2015

3655

3770

Lot 1

Dec 19-137-28

1329.90.
1213.95
115.95

1213.95
115.95
129.90

1213.95
123 1213
123 1213
123 1213

6.68
 1329.90 ③ 1336.68
 1336.68
 1329
 1329.90
 6.78

π over 1256.85 BS East
 on line line run $18^{\circ}40'W$
 201.80 Hat APN & Road
 Dinner with Kunkuh
 PM

① π @ Sta ① On Turn line 1265.85

② Run $N 18^{\circ}40'W$ 201.8 To Sta ②

π @ Sta ① Run $N 8^{\circ}38' W$ 144

③ to Sta ③ being 65 ft from
 Sta ②. That Sta ①

Sta ① - Ch East to 1339.9 To

Sta ④ - being SW Cor Grd Lot 4

Set $2\frac{1}{2} \times 26$ pipe 6.68 W of path

$1329.90 E = IM \frac{1}{16} + 6.68$

1336.58 Hat Sta ⑤ RR Spk

⑤ & path

Geo O. Fookner

Wadsworth 312 Matt

~~to~~ Mulberry St

Relief Mail Corner

Beg @ $\frac{1}{16}$ ch 90° N all 51.80

To Hat under π then $+32.6$

⑥ North To 51.8 N 84.4 To & New
 32.6
 84.4 NW - SE
 Road

Tower #3 BS on site 1-
S $8^{\circ}38'E$ on site 1-060

98

④

Site 2 Beam N $41^{\circ}23'W$ 65

Run $58^{\circ}30'E$ 111.2 To

Site 6. AP in ground R.R. spike

84.4 N from SW Cor Lot 4

Site 3 - Trees

Red oak 9 N $38^{\circ}30'E$ 6.60 ^{Low} Road

WP 15 S $31^{\circ}E$ 27.95 To light
spot at base

Tower #6 BS N $58^{\circ}30'W$ on ③

⑥ Trees to H6

Elm 14 N $5^{\circ}10'E$ 32.80

WP 10 N $83^{\circ}15'E$ 33.30

Light spot at base turned from
Tree E-W-L in 06'

⑦ To H6 BS N $59^{\circ}30'W$ on

S Run S $39^{\circ}45'E$ @ 45.45 N

on 3/4 W of E shoulder of graded
walk @ 82 Ent bog

⑦ @ 109.90 Hit site 7

in bog on to line Lot 4

at 70.25 N of E of SW Cor

N. to SW Cor sets 30 W of bog

99

Frank
Kamberling

⑤

Sto 7- Thence I Got Lot
1- Sec 19-137 28 Contiguous
S $39^{\circ}45'E$ 86.2 To Sto 8

⑧ To one St 8 on point N
BSN $39^{\circ}45'W$ on sat ④ N
S $31^{\circ}30'E$ @ about 50 cut
walis n - s - @ 111.0

To Pipe in E of 3 Bunks
filled with cement for
East end of New Bridge
under construction 63 ft
from west edge of wall in
Lagoon

An Iron Pump point
set by me Date -

To mark E - N
bdry of Wred 1500 ft of
Lot 1 bears S $23^{\circ}20'E$
113.60 feet

Thence to St 8

WP 10 S $86^{\circ}30'W$ 62.00

WP 6 S $45^{\circ}35'W$ 35.78 36.25

ELM 6 S $12^{\circ}40'W$ 20.8

1 1/4" galv Pipe 3' long @ Sto 8

⑥
Kamberling
Kater-Road

100

To over Sta 2. in old road
NWSE BS On ~~az~~ $1.518^{\circ}40'W$
Run $N 35^{\circ}40'W$ 149.20 To
Pt in main road

To back to summer

Home Late Martha and I
still at Jenkins no word from
Ilo-Hacald or Bob for
more than a week

101

Kamberling Kater
⑦ RoadOct 20-1939 at Jenkins
Figuring 5

Sto 6- $S 39^{\circ} 45' E 109.9$ P 999

Sine $63945 \times 109.9 = 70.27$

Cor $76884 \times 109.9 = 83.50$ NG
wot the L. no check?

Cor $7688.4 \times 109.9 = 84.50$

S $39^{\circ} 45' E 196.1$ To 268

Sine $63945 \times 196.1 = 125.40 E$

Cor $76884 \times 196.1 = 150.77$

Sta 8 Run $S 31^{\circ} 30' E$

Sine 5225

Cor $85264) 72.95 = 85.56$

Tang 6128

Lit $1.632 \times 44.7 = 72.95$

(8)

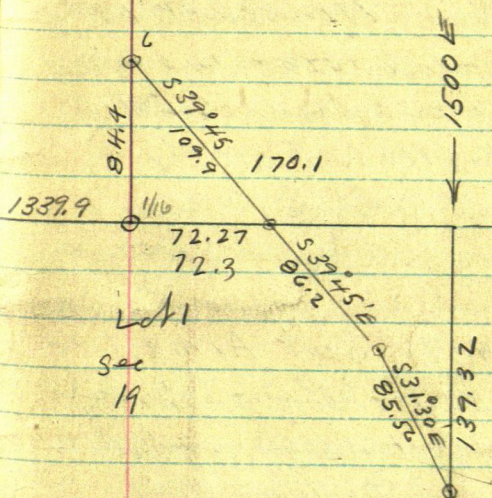
1339.9
70.3
1410.2

137-27

102

Sec 18-

Gov Lot 4



1339.9
72.3
1412.20

I draw description
Frank Kamberling get
paper at Jenkins 2-PM
Kamberling is to pay me
\$20.

John W. Cress

103 D
Dallam-

12.17
Tang-

NOV 10-1939 Friday

Cold as hell- NW Wind

No work. - Harald - Martha
and I hauled wood we fired
piled on our land. Cold.

W 4 To Mrs K T Early

All on Bab Norton Farm

NOV 11-1939 Sat Armistice

Day - warm - Bright Sun

So wired Harald and I

All AM. at Dallam - Plat

Back home for dinner
PM

12-10 back - Correct Hat

4869.50 So 5.86 RR Spk on true
line Page 67-89 - Big oak lies
on line fl Ent

Correct Hat 4735.51

So 6.27 Huber True Line

Page 67-90 - ✓ OK

π over Corrected

Hub 4735.51 W =

628.25 E

104

Focus East on Turn

8.

line Run TURN NE angle
77°43' Focus on Red Flag
over lake - Half a mile N on
Point of land near Dallam
Cottage and run

N 12°17'E @ 199.2 Hub in

8

@ Gilkie Road + 28.0 = 227.2

Hub on Sand beach 3 ft from
Be Shore E Twin Lake

Dallam and MV Baker
arrive 3-30 pm. - Baker will
sell Dallam NWSW

All E of RR. to a point 25 ft E
of Cor of Gilkie Log Cabin
Dallam will deed Baker
All of Gov Lot

From a point 25 ft E of Gilkie
Cottage Baker wants \$600

5 pm. Harald and I call
on Dallam who gives me
ch \$35 - 5 PT. says he will
offer Baker only \$500.

Jahuaen

105

Harald T B & B
QWE Rd

V 4' 45'

Nov 12-1939. Sunday

9-45 AM. π over S/H/A~~Course Dist Water Foot S/H Lin~~S/H
1. N 3// " 6'S. 10'S

2 S 61° 06' E 75'

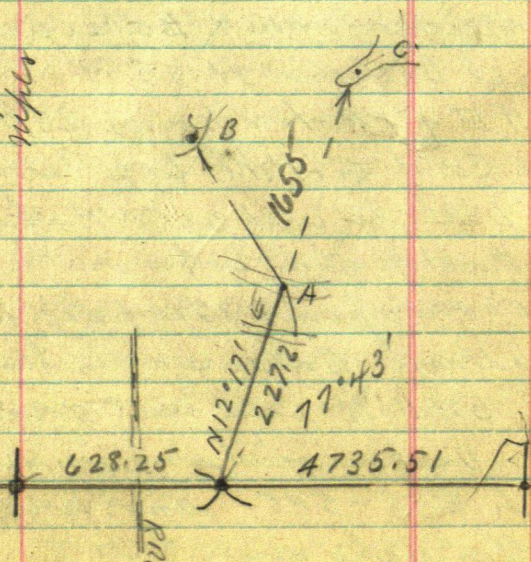
3 Water S 61° E 105 Foot 7R S/H Lin 10 R.S

~~4 S 61° E 100~~

4 S 53° 45' E 370 Water Bk 4' S.

5 S 64° 45' E 450 H

63' 7

Address P. H. Dollan
with Stanley C. Coward
certified public accountant
Baker Bldg
Weymouth

Gondwana on SW
with the

106

Water - 52°45'

⑤ N 52°45' W 75 Rh 6' L Stat Lin 10 L

⑦ N 50°17' W 195 Foot 15' S.

8. N 48°10' W 260

⑨ N 45° W Stk d water sth Lin.

3 1/2 W (Dist 310)

⑩ N 34°54' W sth ~~stake~~

Water 3' E Lin (440)

Foot cut Back 8 1/2 W

⑪ N 28°00' W 515.0

Water 3 1/2 E sth Lin 5 W

Back top 12 W

⑫ N 25°08' W 540

Water 2' E Foot 6' W Top

Rh 15' W

13 N 23° W 600

Bulge 5 1/2 E Bol R-13

Water 1 1/2 E sth Lin 4 W

top Low Rh 15 W

Sptg swam

⑭ N 19°08' 700 in Marsh

Water 2 1/2 E Low Ridge

Stk Lin 15 W Boy Lin

Wrt 100.

107
ech

(15) N 14° 00' W # 800

Wali 5 1/2' E Low shu 4' W

Ridge 2 up 12' W Mwand

is 150 to 200 W and NW

(16) N 5° 28' W 920 Wali 3' E

Shk Lin 3' W Top 6 up 15' W

pealed land Left 6 up

behind 100 ft

(17) N 0° 46' E 1050 Wali 3' E

Shk Lin 3' W Ridge 15' W

(B) 18 - N 4° 52' E 1160 -

Wali 3' E Shk Lin 3' W

Ridge 15' W

(19) No Mark on point

N 5° 28' E - W 1190

On Point no data

Drive around Lake

Road to Sta C - 19

Two Readings 8.15

A to C = 1655 ft

840
1655

PM

207 PM Backfired 108
Tower 2 to 0 19 BS
on Sta 1-A S $12^{\circ}17'W$
St B 18 Bears S $27^{\circ}02'W$
5.66

20 Water S W 5.30

21 - S $33^{\circ}23'W$ 4.4 water

22 S 41° W 3.70

Ridge 20' W - Pop Ash

23 - S $47^{\circ}45'W$ 3.70

Ridge 20 W Swamp

Wet

23 24 - S $57^{\circ}14'W$ 400 To

410 on Point

Bay Ice Bay SW

Can't see it from K

25 same comes over

Bay in edge of bay 5.

5.15 at water

But 24-25 see reg

so 30 ft Bay SW

65 ft

26 S $67^{\circ}11'W$ 5.30 at water

Edge Bay 25 ft from

solid land

Bay run SW

109

- (27) S $72^{\circ}52'$ W 520 edg
9 in. Stake Lin 6 ft W
solid land 20 ft W
- 28- S $84^{\circ}09'$ W 425
Edge ice Sta Lin 15 foot
- (29) N $87^{\circ}38'$ W 410 in
Stk Lin 10 W
- (30) N $79^{\circ}30'$ W 410 in
Stk Lin 10 W
- 31 (31) N $64^{\circ}16'$ W 480 on ice
Stk Lin 15 West
- 32 (32) N $56^{\circ}39'$ W 515 in bet
solid land 10 L-Water
20' R
- 33 (33) N $51^{\circ}58'$ W 530 on all
RR split Hub MKd 29.2
on Bank 20 ft 20 from
water Foot on 6 ft E by
- (34) N $42^{\circ}36'$ W 530 in
near water 5 ft West
Stake Lin 15 ft Left
- 35 (35) N $27^{\circ}31'$ W 600
on the Stk Lin 6 ft
water 15 ft

67
23
90

170

(36) N 13°54' W 630

5 ft from water 20 ft from
subed level 25 E by
from old RR spike NW

Nov 17-1939

Nov 17-1939 - 3:45 PM
Herald & I T over #356
Hub on True Line 4386.46
W = 977.3 E ~~alt~~ - 6.8 E of Ho
rel S 23°35' W $\frac{3}{10} \frac{2}{0}$ S 22° W

T over corrected Hub
4236.06 W = 1127.70 E
and is 30 ft E of Top of seawall
15 ft E of foot of slope & 125 ft E of
& 18 ft of water. Focus W on
true line. Shore line bears abt
23° R. → N 67° W. OK for E Line ^{S. 23° W}

From corrected Hub
4485.78 ~~alt~~ = 877.98 E ch.
Went 59.2 to Hub & Read T over 59.2
Road ^{Line} N 13°30' W 117 ft
Note: at 35 road goes W 7 ft
e 117 road line west

III SECOR Swamp is

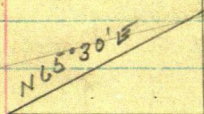
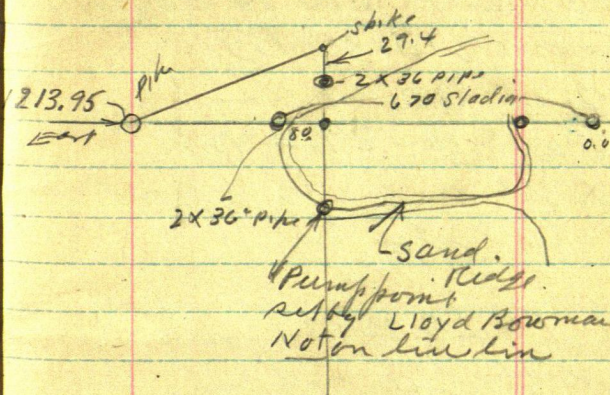
N 40° W and 4 miles 300

It is along W side and so
side of roads 100 wide

E road run S 40° E 40 //
then E by

Paged 8 Kater
 Run backwards From Book 112
 Aug 16-1939

8960'
 2430
 6430



continued on Page
 95

⑦ Kaler

Glacier

Lt 0.0 west to IM
1420 E 6.70 ft = 670. ft

From 314.35 BS

S 24° 30' W and N
South @ 29.4 ft
2x36" pipe 10 ft from
Water NE SW

at 1420 E - 1 ft
2x36" in pipe in
mud

Lloyd Bowmans sub
2x36" pump pt

6) Kali
From 00. ch E W
87.75 to R.R.
Spoke in Heat of
12" Elm green

Over 216.8 Turn 90°
West set Line for Kali

Over hub 216.8 show
line runs S 45° 31' E
almost 1000 ft and
N 46° 15' W about 400
Then turns a little more
West.

Over hub 207.3 take
Ties

Basewood 7 N 48° 30' W
13.48

Elm 12 S 14° 10' W 34.65

⑤ Kale

K over Lake 60 ft E of wall
Trin Red Oak 12 N 40° 04'
E 28.88

W O 9 S 10° 14' E 14.17

Run East @ 207.3 H/V
+ 9.50 = 216.8 H/V

3 ft from Birch cut
Bent 20 ft W N W SE
Cut to top of Birch

40 feet from 150
from wall

207.3
99.5

K @ 0.0

216.8 (6" Birch N 32° 1/2' E)
20.00 feet to next

± 20" split from strip
S 76° 3/4' E 26, 10

R.R. split

Ch W N 56.50 I M

9 ft E of wall

4

$$\begin{array}{r} 1420 \\ 1214 \\ \hline 206 \end{array}$$

Tower 1272.25

 True NW Cor House foundation
 $S 31^{\circ} 58' W \quad 25.96$

 East edge Cem Wall
 at the ground West
 $16.25 + .50 = 16.75$

and at Top of wall 16.78

 $NP 15^{\circ} N 14^{\circ} E \quad 46.70$

Light spot at 60

Only VP here

100 foot Rodin

~~1321.40~~ Hut (1321.0 at 19-39)

1323 - cut 0.40 v

12" Br Brick Lead

V down line

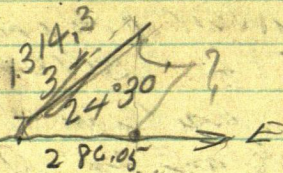
1336.68 Hut & graded
walk 5 ft wide - 51350 Hubon E slope
of v - 5 - file 10 ft from foot
 $220 + 1200 = 1420$ Rh

in mud w edge wall

3 Kala

Turn 1213.95 E

Turn 24°30' L



~~150000~~
~~1213.95~~
~~286.05~~

24°30'

Line 4147

Cor 90996) 286.05

1314.35

90996) 286.050

272988

130620

90996

396240

363984

322560

272988

Tang 4557

495720

454480

(2) Kali

1-30 PM

1213.95

C 1221 NW Cor Cem Foundation

1227.2 @ 1234.8 NW Cor

3 ft Cem walk to R 1.50

1287.9 NE Cor 3 ft Cem walk

R 1.00 Rm SE

1240.90 Cem L 2.00 ft

and W side 8" wall

0.70 R 1254.85 W side

8" Cem wall Extends

1.50 L

1255.5 E edge Cem

wall - 1.50 to edge of N wall

and Cem floor

4 ft L

1255.3 in @ chert NE Cor Cem
foundation 22.20 R.

1256.85 Hub

1290.85

1290.90 Hub E Bldg

Thru down into

1272.25 HV

Kalin ①
aug 16/89

1200
140
1060

Ties to cor to sec

12-13-18-19 -137-29

Red Oak 12 N 25° W 47.56

W Birch 6 S 47° 41' W 29.11

J.P. 10 S 50° 48' E 42.91

NP 6 N 52° 22' E 34.4

run E @ 300 R.R. spike

@ 389.06 hub R.R. spike

@ 600 R.R. spike hub

900.

158 742. Hub

742 water 150 m

@ 800 " 500

@ 900 Hub water 40 m

963.05 Hub 1060 Hub

4 ft N of water (1040 to 1060)

water 4 ft N

12000

2323

1200 7 Hub

1213.95 Hub

1200 200

963.05

1236.95