

412
IDEAL
Store

412

Winston Bros
Ellison

13728

(1)

Index

Danielson

See Levering Brook 231

Ideal " 231

W.D. O'Brien 217

Ellsworth Jones 217

Flat Brook A2.

137-28
Sec 23

3

Danielson
\$10 - 2 Acres

2 Acres in SW 1/4 Cor 23-137-28
Ideal Store

Walker about Mar 25 1941
I wrote Danielson that
I will stake out his 2
acres for \$10. Foolish
it is worth \$35 to do
this work.

April 3rd Bryant
funeral

Apr 4-1941

Figuring

4



10618.85 W =

10592.60

10.035.09 =

9785.20 Nail in sh

9725.20 Hub

9073.60 Hub

8902.00 Tap in

Ideal

5

7

Figuring from old
Field Book for Ideal
Store "2 acres"

Books

231-

✓ April 4-1941

Figuring
March 4-1941

copy sales

old Field Book 231

Page 22+-

8,543.80

2750.26

2392.06

7,900.00

1784.26 W

7,000.00

848.26

6693.90 W

542.16 W

6151.74 W

= 00. W

MC.

Σ

21.67

(21)

(22)

137-28

Idial

(7)

10618.85

123.49
101.82

sloric

4467.11

10592.60

(25)

(23)

4440.86

10.035.90

110.20
88.53

3884.16

9.785.20

104.50

8283

3633.66

9.725.20

81.457
103.12

3573.46

9.073.60

88.27
66.60

2921.86

8.902.00

84.35
62.68

2750.26

8.543.80

76.19
54.52

2392.06

⇒ I

7.900.00

62.33
40.06

Lake
1900

1784.26

West
Random

Correction
022794 + 21.67 N.
1°18'

7.000.00

41.00

848.26

6.693.90

19.33
34.00
21.67
12.33

542.16

6151.74

mc

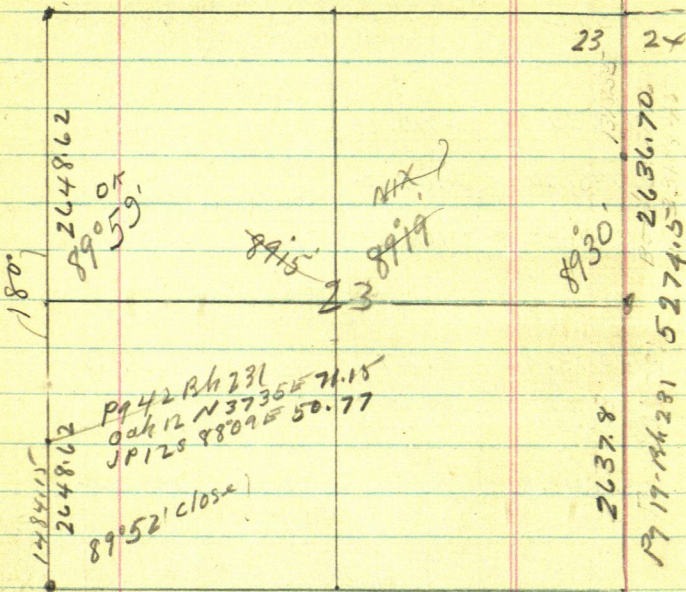
0.00

21.67

8

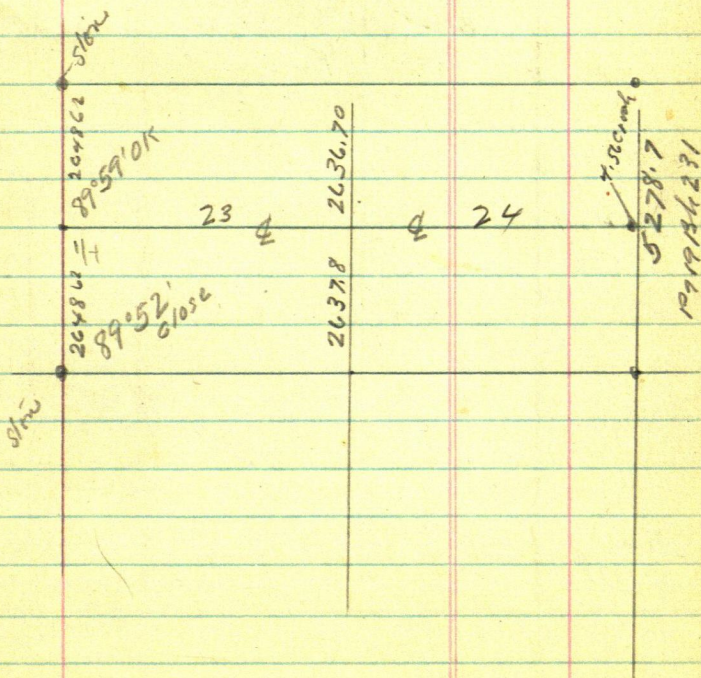
Figuring
137-28 Apr 5-1941 14 13

Pg 41-BK 231 5297.24 Rechain



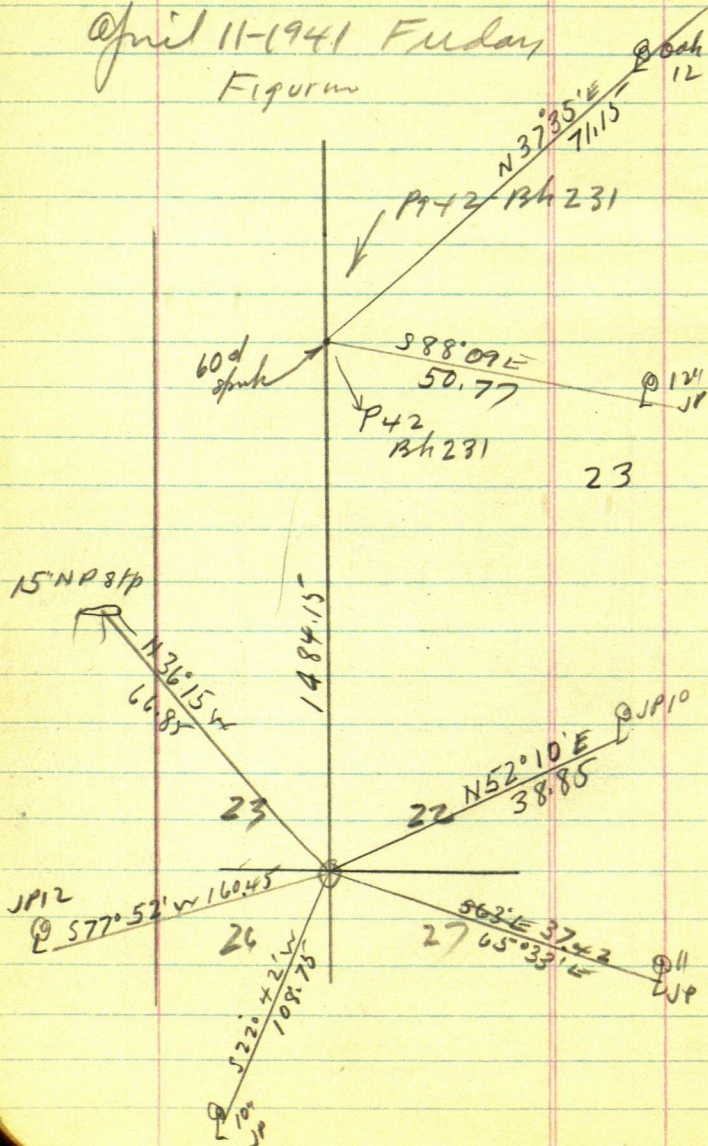
9

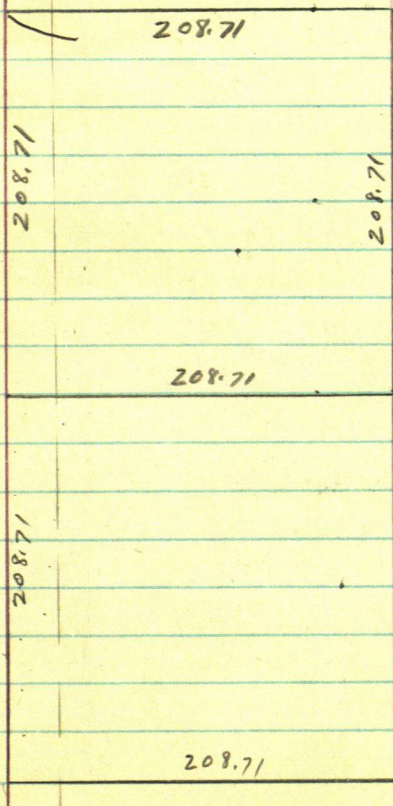
264862
 263781
 10.82



10

April 11-1941 Friday
Figurum





①

13

Winston Bessie

Working for J H Ellison
1470 Northwestern Bank Bldg
Mpls. \$75 Total
Letter of Nov 25-1941 etc

Gov Lat 5.

Dec 20-137-27

Dec 5-1941

About 7-30 AM Pick up
Harold Cars and his lunch
Drive to Crow Lake West
Shore

See Field Book 223-

Aune-Hardy Survey

Page 5

From 12x12 ccm Cor 1:

17-18-19-20-21 137-27

Harold and I cut out
and re-chain my old 7
line

14

2

East bet 17-20 - 137-27

@ 316 old 24" fire stump
remains (Pg 5 Bk 223)

@ 657.8 Finding old RR
spike with ties given on Pg 5

From 657.8 ch to 1.15 set
small wood hut on line
line. Pg 7-8-29-Bk 223

X @ sec on pass line
thru small wood hut

East @ 660 set RR spike
Hut @ 665 Top of cut bank
NE-SW.

X over 660 Focus went on
sec on and continue

East on line line - Down
steep cut bank

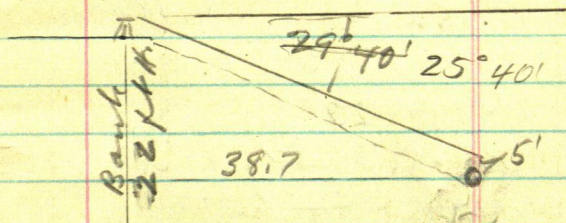
665 cut bank

$660 + 38.7 = 698.7$ set
2 X 48" pipe at foot of
slope 4 ft from water.

Cross Lake Pile stone
around 698.7 slope

Chained down with plumb-
-bob

Angle of slope = $25^{\circ}40'$



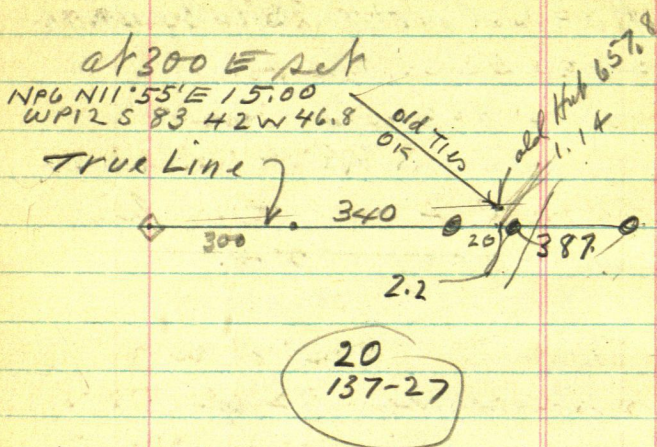
$$\tan 29'40' = \frac{5696}{25'40'}$$

$$\begin{array}{r} 38.7 \\ 57 \\ \hline 2709 \\ 1935 \\ \hline 22,0559 \end{array}$$

at 665 cut bank 22 ft
above sand beach and
24 above water today

16

4



At 300 E set 2x26" pipe

At 600 pin

@ 640 set 2 1/4 x 48" pipe
in mound

At 660 E set 2 1/4 x 20" Ties
pipe 5 ft from bank

New Ties Using same
old BTS -

6" NPNOW 8" N 3°30' E 15.85

To old spot at base

660
39.7
698.7

5

17

12" WP. Now 14" S 85°10'W 48.90

To old blaze at base

New blaze at base

bears S 85°30'W 48.70

Turned from true line
West U 6°30' + -

Continue East down

big steep cut bank 38.7

To 698.7 set 2x48' pipe

foot of slope 4 ft from
water Pg 14.

Pile some small 6"
staves not many

Note This 698.7 may
not stay - Ice may
take it out

Set 8 inches above ground

18

6

Hoe π over IM 660 E (2)Take Top of Hi cut bank
West shore Cern Lake

See 20-137-27

S 38° 56' W 347.0

To Slo (1)

0 to 200 Sharp cut top
of bank 3' L

200 to 275 Bank 0.0. L

347 Bank 8' L

 π over Slo (1) BS on Slo

0' Run

S 30° 44' W 355.3

To Slo (2)

@ 100 Bank 8' L

@ 120 " 6' L

@ 250 " 6' L

270 to 290 - 20' L

330 - 10' L

355 = Bk 15' L

To Slo (2) Run

S 16° 30' W 446.2 To
Slo (3)

@ 20 ft Bank 15' L

@ 50' " 4' L

@ 75 " 4' L

@ 130 " 2' L

@ 225 To 300. 10' L

@ 335 15' L

@ 360 15' L

@ 446.2 6' L

Slo (3) Run

S 25° 26' W 287 To
White slake on bank

@ 140 Bank 15' L

Quit at dusk Calad

Fruit skin of snow

Quit about 4-30

8 1/2 Hr @ 50. \$ 4.25

20

Dec 6-1941

Herald and I Lv @ 9-
work till 4-30

Called 8 hours

Eat lunch at William-
son room

Cut out N S line

Dug up old Hahr P 40
Book 212.

Dec 7- 1941
Figuring

22

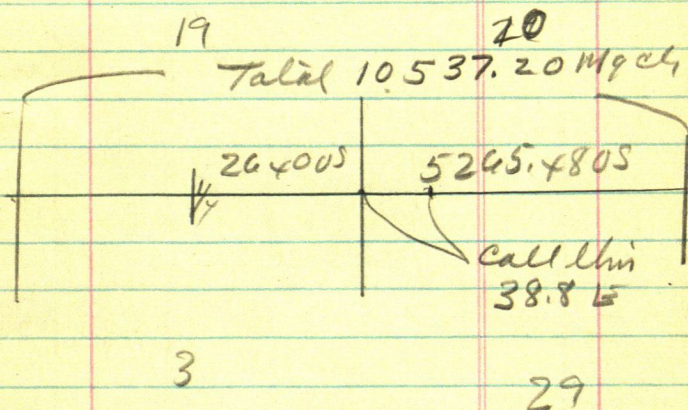
~~Dec~~ 8-1941

Dec 9 1941

Herald I Figure

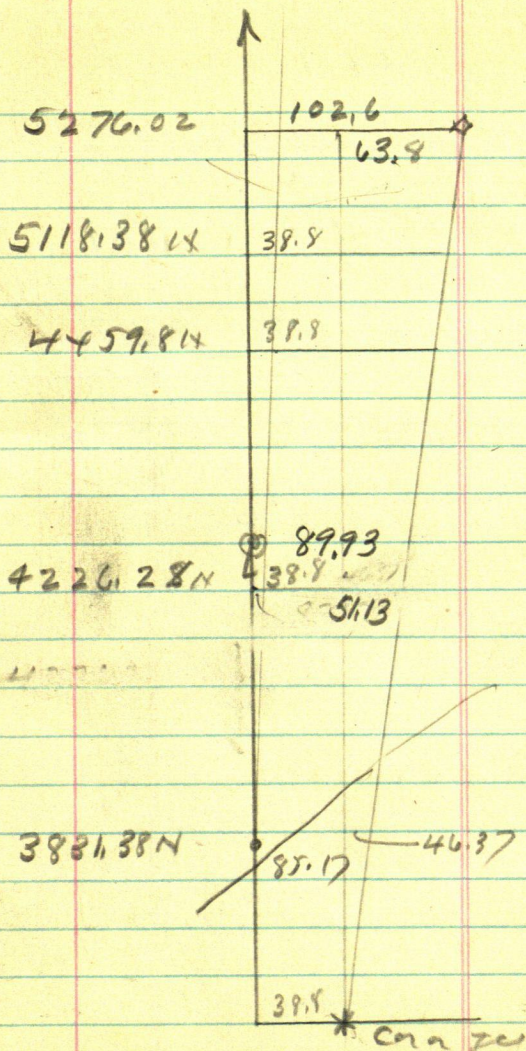
Book 212-

Page 37-36-34-42-



10.537.2. My ch

2.452.37884.9 My ch to
Knudsen's 1/4 Pg 35-



$$5276) 63.8 = .0121 + 38.8 =$$

26

$$.0121 E + 38.8$$

$$3831.38 \text{ Ngus } E 46.37 + 38.8 =$$

$$4226.28 \text{ " } E 51.13 + 38.8 = 89.9$$

$$4459.08 \text{ " } E 53.97 + 38.8 = 92.76$$

$$~~5118.38 E 61.95 + 38.8 = 100.07~~$$

$$\begin{array}{r} 5-38 \\ 87.43 \end{array}$$

3832

121

27

3832

7664

3832

46.3672

28

.0105

At 1200 So we ch
90° West 12.60 fl and
set $2\frac{1}{4} \times 48'$ pipe 0.2 up
To one 1200 So on line
Jim
Ties

House Log.

Main Ho. N-3- outnd

21 X 25.5

Wing Porch on wing

East Porch 8

West Porch 10.

over all to End

~~33.00 over~~

32.70 over all

round

$$\begin{array}{r} 21 \\ 8 \\ \hline 1 \\ 29 \end{array}$$

West Porch Wing
set 2 ft N and
as

10 x 23.5

East Porch full

to 12.

SE

~~SW~~ Cor Porch

N $56^{\circ}44'E$ 57.0

SW

~~SE~~ Cor Porch

N $19^{\circ}27'E$ 61.5

~~NW Cor Porch~~

~~N E~~

Ties

NP 13 N $28^{\circ}02'E$ 24.3

NP 12 N $65^{\circ}15'W$ 13.1

FM set E 14.35

$19^{\circ}27'$ sine $333 \times 57 =$

or $943 \times 57 =$

30

200 1290 set

2x 26" pipe

1295 H₂O

1300 Bank 43 ft

OW of Whl. slk

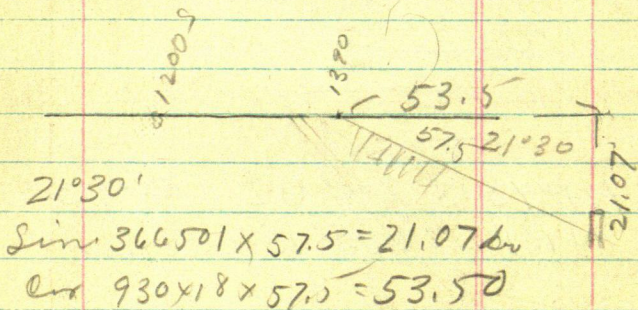
Run 1290 down slope

Slope of Cut bank 21°30' - 57.5°

angle 21°30' 1 ft

57.5 via slope

90° 23' S E angle



1290

53.5

1343.5 A = 2 1/2 x 48" pipe

4 ft from wall and at foot
of Cut bank

April-1941

Towe 660 E Takahi Bank

Page 18

S 38° 56' W 347

Sine

or

Tang 807.859

S 30° 46' W 355.3

Tang = 594.547

~~S 25° 26' W 287~~

S 16° 30' W 446.2

Tang = 296.213

S 25° 26' W 287 Towhit Slake
on bank

Tang = 475.548

32

Dec 12-1941 Ctho Figure
House Pg 28

Town ¹²⁰⁰~~1290~~ South

SW Corner Wing N $19^{\circ}27'E$ 61.5

Line $332984 \times 61.5 = 20.48 E$

Cor $942932 \times 61.5 = 57.99 N$

SE Corner N $56^{\circ}44'E$ 57.0

Line $836127 \times 57.0 = 47.66 E$

Corner $548536 \times 57.0 = 31.27 N$

1200 005

58
1142

Dec 13-1941

Get³10 from Dr Button.

Bal due \$25.

Platting of Ch 14

Book 212-

JH Ellison Survey

Lot 5-20-137-27 Crowleying Co

Platting Sep 18

660 E. = Sat 0. 1₂

S 38° 56' W 347

@ 0 to 200 sharp left cut bank

3' L