

411

~~411~~

Shingobee Twp  
Andy Mendenhall

March 22-1940

SHINGOBEE - So

D

Andy Mendenhall  
over unsold part of  
Lot 2 - See 31-141-30  
4045 US

9

Sold

31-45 left US Survey  
But

Andy says he only  
has 6 acres left

1 acre of bog

5 on Ten Mile Lake

Floating Bog sold  
to Moorehouse

(Chas)  $40 + 5 = 45$

Other prices

- 1 out of 80 over
- 2 Bill Burk 3
- 3 Bill O'pitz 1-
- 4 Fred Parker 1- 2.50 <sup>per</sup> <sup>acre</sup>
- 5 Jensen 1 (50 x 143)
- 6 J. Mundy 50 x 143 1A

Sold By Darrin  
McDonnell & Lij



2

"Mustöck Lij" sold  
Bark & chin trees

Jan 18-1942 Sunday  
D

(5)

Stingabee Turp  
South

John Floren  
Charley

I start to work for  
John Floren and Alf Hatti  
and

Charles

Jan 18-1942 Sunday  
Lr Walker with Russell  
Shatt

Continued From  
Small Book



6

2

Floren - Appegard  
Continued

From Small snap book

March 2nd 1942 -

I call on Mrs Hattie  
Floren and her husband  
John Floren  
Reed and I to Wa Cha  
2-30 PM

Pickup Chas Appegard

I offer to establish west  
line. See 27-141-31 and  
run E-W-E @ \$45 - being

22.5° for Mrs Floren and

22.50 for Chas Appegard

OR

Will establish the west line  
for \$25. OR

will make a preliminary  
survey of it all @ \$25

Floren - Appegard

Mar 2-1942

Mrs Floren insists all  
she wants is a

Preliminary Survey  
for which she pays me  
\$125.00 cash

Charles Appegard will pay  
his \$125.00

Wed

March 3-1942

Commissioners meet

March 24 - Char Appegard  
hands me his \$15 ch from

Fisher & Deaper

I hand Char 2.50

So that is \$25. paid  
for survey of Sec line only



8

4

March 4-1942

11-30 am pick up Reed Curo  
and we drive west

to over Sta 0.0.

RR. Spike Temp 44 Cor  
bet 27-28-144-31

Focus soon on my new K line

Var reads  $5^{\circ}30' E$

0.0. Hot Temp 44

Tics viz:

Old Burned 12" slump S  $18^{\circ}30' W$

21.50 f. & maybe old BT

24" Old Pine slump S  $7^{\circ}40' E$

54.3. T. &

Old 24" Pine slump S  $8^{\circ}40' E$

83.0 T. & of slump

Old Pine slump Root 12" ?

S  $18^{\circ}50' E$  79.0 f. &

Nat; One of this is maybe old  
MSBT?

New Teer 15<sup>00</sup> O.O. Temp

1/2 bet 27-28-141-81

Heart of 12" green NP stump

S 45° 51' E 25.10 To blue

chalk marking &

12" NP line N 10° 10' E 16.80 To

Notch at green roots

= light line

Cut line North

2-PM Out for dinner and  
drive to Waker

4-PM to Walker

10.0 BS So on my new N line

Continue straight

North 300 pin 343.7 Ht. ✓

RR spike 600 pin 641.7 Ht. ✓

RR spike

600 + 100 = 700 pin + 300 =

1000 pin 1046.8 1000 pin line

Cut 1/2" in W side 12" NP

1049. Ht. RR spike ✓

Quit at 7-PM



March 5-1942

Reed and I & Walker 9 am

X over 1049. Cat notch  
deeper in 12" v p west side.

$$1049 + 244.1 = 1293.1 \text{ Hut } \checkmark$$

$$+ 286. \quad \quad \quad 286.8 =$$

$$1579.9 \text{ Hut } \checkmark$$

$$110.4$$

$$1690.3 \text{ Hut } \checkmark$$

1690.3 Hut 5 ft 20 of cat tail  
mark 1885 open water in ice

$$1690.3 + 300 = 1990.3 \text{ from ice}$$

2130 Lv open ice

2180 Lv Cat tails

$$1990.3 + 200 = 2190.3 \text{ from shore}$$

$$92.3$$

$$2282.6 \text{ Hut } \checkmark$$

bet 2- principal roads 30 ft

apart Tree 1: 2282.6

Q 16" WP stump from N 72° W 27.30

Q 12" WP " " S 21° 47' W 23.00

Notch in 16" WP Tree S 66° E 15.80

2282.6

Take 2-ald US BTS.

To ald spaton so rid

20' WPS 11°40' W 25.7

12' W Oak S 10°40' E 34.4

12-30 L<sub>1</sub> for dinner

Martha scrubbing floor

Dorcas getting ready to go to

Bochum with Dorothy Hoyes

who called since we left

Reed and I eat at

Restaurant 45¢ 9¢ to Reed  
Talât pd Reed \$55.00Look up US Nalis at Et Ho  
MC N° 33 So rid of Lake Post

MC N° 32 N rid of Lake

US Nalis call for

WP 7 N 34° W 19 LKs = 12.5x

W Oak 8 N 88° E 16" = 10.56

We set RR spikes by flat ch  
from foot of ald BTS.



12

141-31

832

K over 2282.6,

MCN<sup>e</sup> 32 bears

35.0 S and 0.80 west

✓ at 2247.6

MCN<sup>e</sup> 32 bears

west 0.80 of a foot

✓ Hut @ 2247.6 RR  
spike no head-on  
roadSet RR spike for  
MC 32.

2282.6 + 50

50  
2332.6

23 30 enter wet

Draw NWSE

2582.6 from LV NWSE  
1.502582.6 from

2582.6 old N 5 E 8 N

$$2732.6 + 83.9 =$$

$$83.9$$

$$2816.5 \text{ Hdr}$$

$$\text{Tom } 2816.5 \text{ on } 6$$

$$N 24^\circ W 12.9$$

Match drum in NE ~~4x~~

5" Cedar post

Balance of post at

on 5"

Tom on

old 0.76

$$S 43^\circ 30' W 16.50$$

old 13.75

605

$$N 48^\circ W 23.10$$

$$\text{New } 16'' W \text{ Oak } N 8^\circ E 36.75$$

$$NP 14 S 46 W 46.95$$

$$8'' W \text{ Oak } N 83^\circ 34' E 47.50 W$$

$$WB 7 S 55^\circ 20' E 15.75$$

21-22-27-28-

141-31 Florida

Surveyed Mar 5-1942

Rechecked Jan 4-1943



14

True LME 22

WP 24N 30E 31.25

WO 245 51°15E 17.40

~~AO~~ 10°W 01X 64°15W

131.40

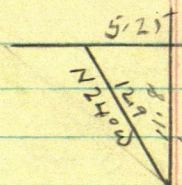
Ob WP 1X 32°W

Ob WP 1X 80E

Broken Top NN Spoke

Dist 0.80

V 60 Sully Curve



2816.50

N 24° W 12.9

Sine ~~207912~~ 4067 X 12.9 = 5.25

Or ~~978148~~ 91355 X 12.9

Tang ~~212557~~ 4452 X 11.8 =

525  
500  
580.68  
MC  
0.8

2828.28

2816.5

2282.6

2247.6

1690.3

1579.9

1293.10

1049.0

641.7

343.7

~~399 Rot~~

563.6 H<sub>1</sub>

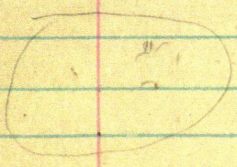
841.2 "

1011.70 H<sub>1</sub>

P-1141 out on line

1201.3 H<sub>1</sub>

1280. H<sub>1</sub> 6





16

141-31 US Nales

North Bet 27-28 U

40 = (2640) 1/4

WP6N 6W 70

4000 ~~= 2315~~ = 2640

2315 ~~=~~ 1527.90

2640.00
<u>1527.90</u>
4167.90

LK <sup>2</sup>		74417
4000 =	2640.00	2640.
2315 =	1527.90 = OK	4167.90
1038 =	685.08 = OK	4852.98
647 =	427.02	5280.00
	5280.00	

2315 =	1527.90	1527.90
1038	685.08	2212.98
647 =	427.02	2640.00

685.08  
1527.90  
 2212.98 OS



18

S 89° 20' E 59.70

0° 40'

Sine 011635 x 59.70 = .710

Cr 999932 x 59.70

Tang 011636 x 59.

99.9932

011635

59.7

6 120  
3175 60  
12  
72

70445  
104715  
58175  
7135095

597

9.99932

22476

2610

4857.6

1194  
1791

8

2609.3

999932

6

59.55592

7  
26100

999932

597

6999524

8999388

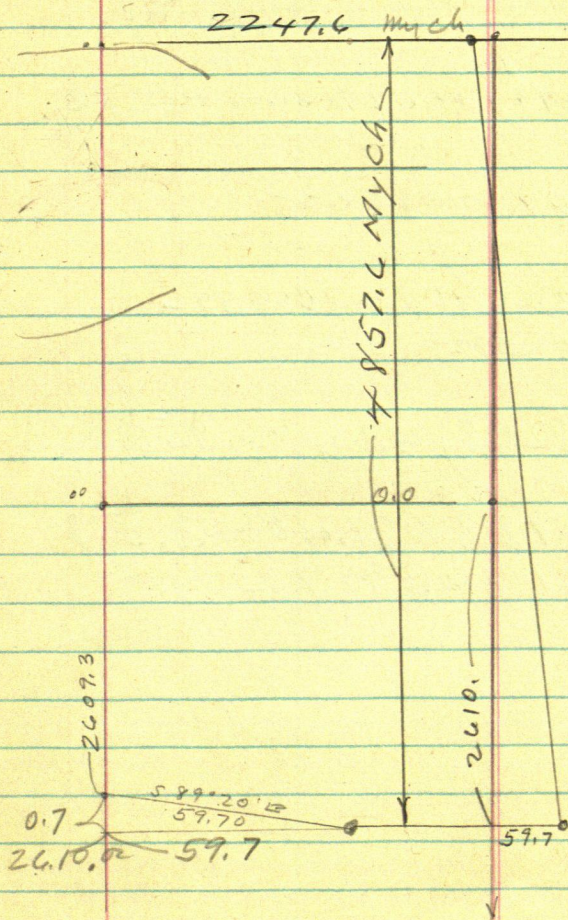
4999660

59.6959404

See Two Books

See Pg B. Small Book  
March 17-1942 F1050

19





March 19-1942

(20)

2640.00

2212.9803

4852.98

4852.98) 4.620000 = 0.00592

2640 X 0.00592 =

Correction = .000592

2640 X 592 =

4852.98) 4.62 = 9519923

9519923 X 2640 = 2.513

2.513259672

4852.98 US To MC.

4857.60 = 4,62 Long

2040. US

2212.98 US

(21)



22

$$2640 + 2.51 = 2642.51$$

Hut 0.0 is 2610.0 N  
and gas N 32.51 T.  
N 2642.51 N

3960 gas N 3.76 T.  
3963.76 - N 1/16 Cor

We decid. to put Charlie's  
N Lane 1320 N of 0.0  
Temp Then E 16° 00'

See P 915

Hut 1293.10 N and ch N 26.9  
T. 1320 N of 0.0, Then  
E 16° 00'

This will be Safe