

326

1.	MAPLE LANDFILL	13-136-30
2.	JOHN KNUTSON	22-137-28
4.	DAVE JOHNSON	14-140-29
5.	LEO FUERNSTAHL	30-138-29
9.	BILL DAVIS	20-142-31
14.	RENO WELLS	31-141-30
18.	LONGVILLE LANDFILL	12-140-27
20.	CHRISTMAS POINT	141-31
21.	JIM ADAMS	
22.	BUD MELTING - GEVING	35-142-30
23.	STONY LAKE CAMP	
26.	GLEN LIEN	5-141-29
27.	LONGVILLE LANDFILL	12-140-27
28.	BILL DAVIS	20-142-31
29.	CECIL UTSLER	
31.	RENO WELLS	31-141-30
33.	FLOYD ROBERG	30-142-30
34.	STONY LAKE CAMP	
36.	LEO FUERNSTAHL	
37.	ARCAND BENSON	
38.	STONY LAKE CAMP	
39.	GENE WOLTERS	
40.	BILL HANS	3-140-29
42.	GREG FUNK	4-139-26
44.	CHRISTMAS POINT	141-31

46.	BILL HAAS	3-140-29
47.	HACK. SR. CITIZEN	19-140-30
48.	CECIL CUSTER	34-140-30
49.	DICK GAROUTTE	19-140-30
50.	MIKE ORTH - (BOWMAN LAKE ELDON SHORES)	32-139-30
52.	PHIL LARUE (PONTOLAKE)	13-136-30
53.	MAPLE LANDFILL.	
54.	FLOYD ROBERG (LONGBOW)	143-31

MAPLE LANDFILL

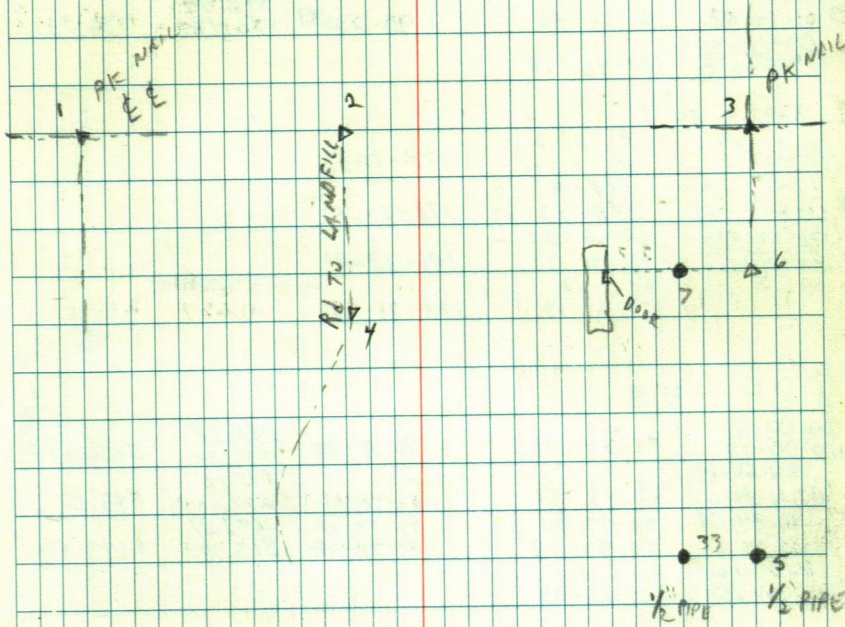
T	C	2	B	S	1			
00-00-18								
180-0-16				180-	01-55	89-33-33	3568.61	3568.501
180-02-13							1087.720	
3 0-2-14				180-	01-58	90-4-59	1793.29	1793.272
0-0-12							546.592	
179-58-02				179-	57-50			
272-26-36				272-	26-18			
4 92-26-33				272-	26-17			

TE 3	BS 2			
00-00-34				
80-00-42	270-53-36			
270-54-10			2662.81	
5) 90-54-06	270-53-24	90-3-56	811.627	2662.801
0-0-18				
89-6-51	89-06-33			

106	ISS3			
00-00-38			919.28	
180-00-31	267-45-22	89-54-08	280.195	919.272
267-46-00			128.55	
187-45-52	267-45-21	89-38-22	39.183	128.549
00-00-00				
92-14-19	92-14-19			

WIND T-2 300. CLEAR-WINDY

APRIL 4, 1990 W. CURRO - D. FARNAM - J. WATSHYE



JOHN KNOTSON

TQ 2 BS 1

00-00-11			251.79	
180-00-17	181-12-58	93-00-11	76.744	251.441
181-14-09			496.94	
3 01-14-03	181-13-46	90-23-39	151.470	496.931
00-00-32				
178-46-50	178-46-18			

TQ 3 BS 2

0-0-25	0-0-20			
179-40-17	180-0-11	178-21-58		
178-2-22	178-22-18			
4 358-2-24	358-22-23	178-22-12		
178-22-07	0-0-32			
BS 4	181-28-23	181-38-01		
BS 2	0-0-20			
	178-22-13	178-21-53		

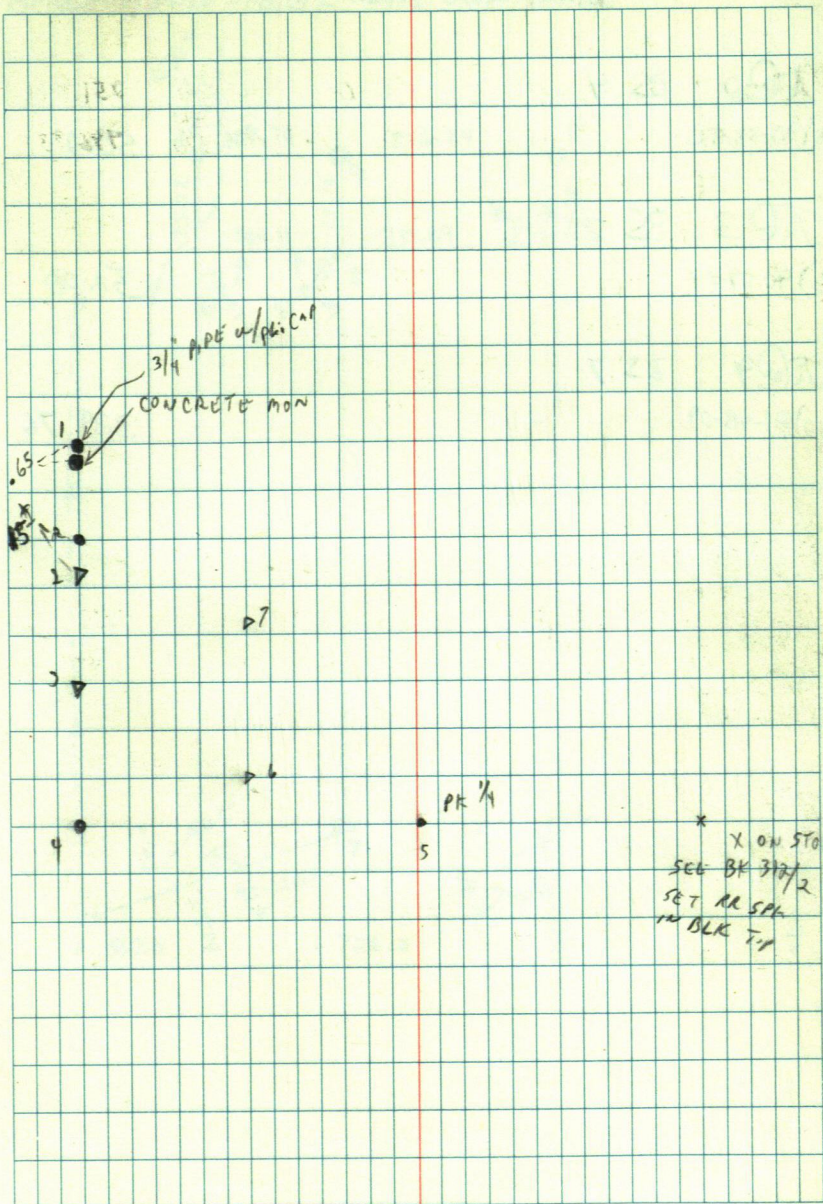
TQ 4 BS 3

00-00-18			585.28	
180-00-13	84-54-01	90-13-33	178.394	585.274
84-54-19			845.16	
6) 264-54-07	84-53-54	89-48-15	252.604	845.15
90-34-08	90-33-50	89-57-07	2643.01	
5) 270-24-01	90-33-48	89-58-15	805.594	2643.004
0-0-16				
469-26-25	269-26-09			

TQ 6 BS 4

00-00-12				
180-00-23	103-51-49			
103-52-01			799.03	
7) 283-52-02	103-51-39	89-52-10	243.543	799.022
0-0-27				
256-8-40	256-08-12			

2



JOHN KNUTSON - IDEAL CORNERS

$\pi @ 2$ BS 4

5) 90-33-50

50.0

$\pi @ 3$ BS 2

6) 90-07-14

30.00

$\pi @ 9$ BS 7

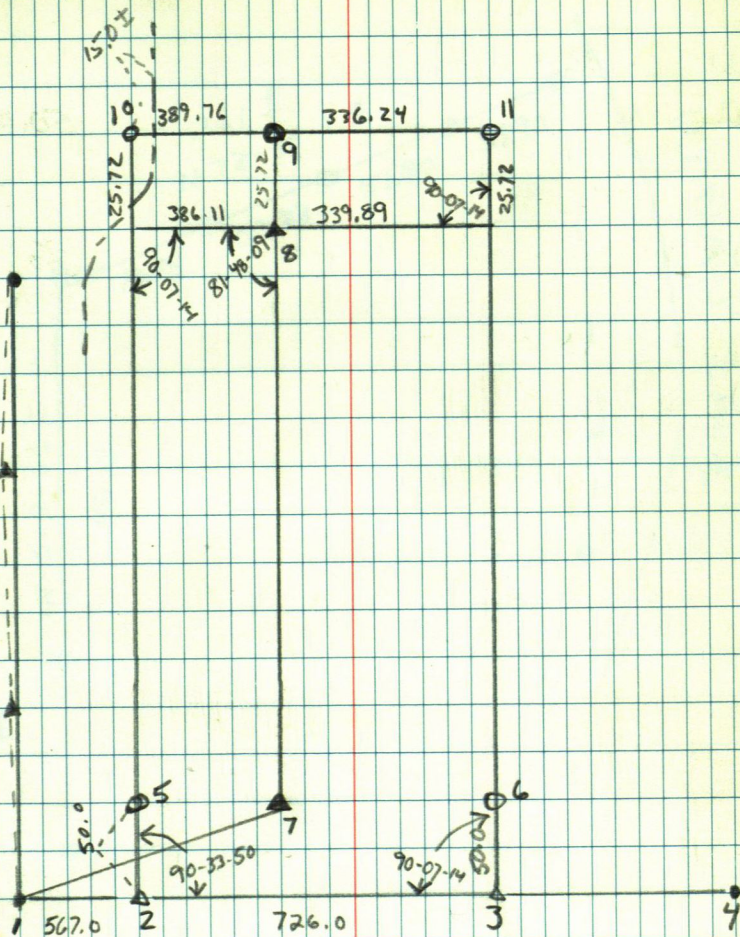
10) 81-48-09

389.76

APRIL 9, 1990

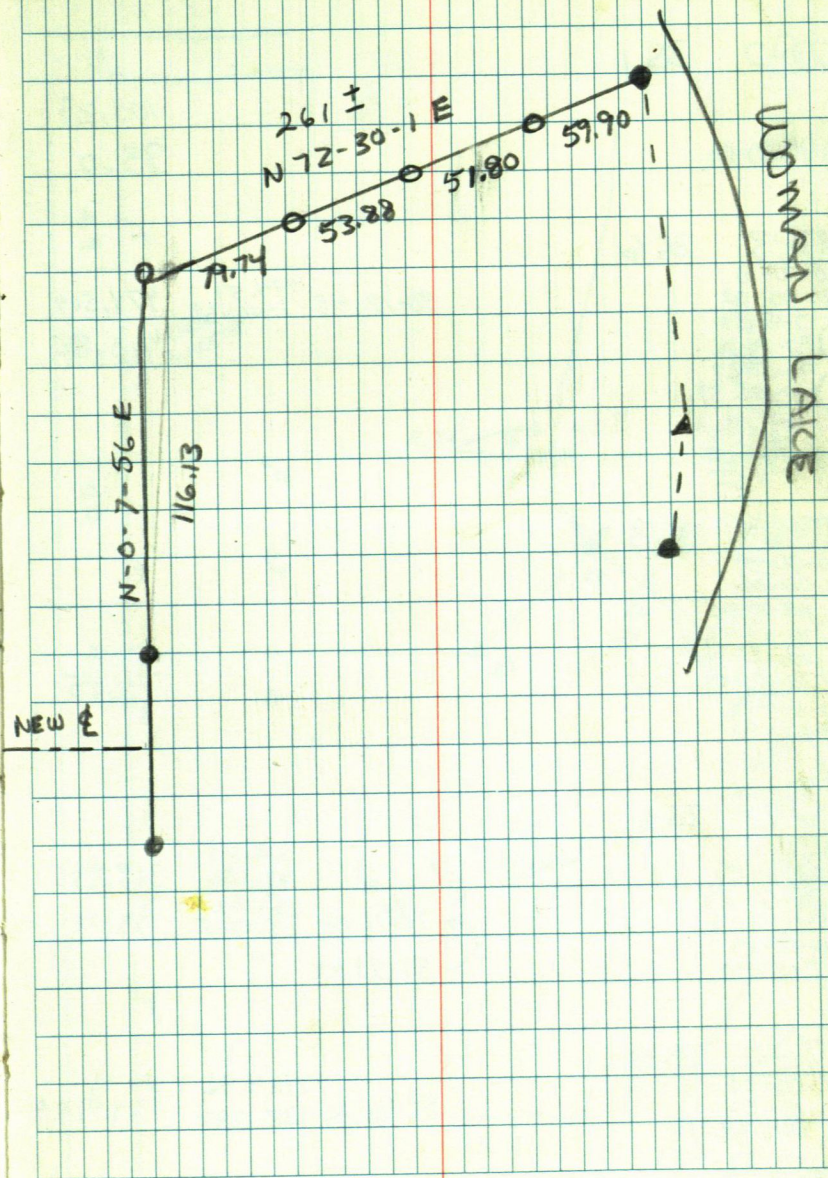
D. FARNAM - J. WATSCHE

3



DAVE JOHNSON

4
APRIL 10, 1955 D. FARINAN - J. WATSCHE



LEO FUHNTAIL

102 BS 1

3) 90-00-00

100.29

33.0

103 BS 6

00-00-10

180-00-03

17-19-37

4) 197-19-32

90-01-27

2) 270-01-39

00-00-13

269-58-53

90-17-43 474.51
144.632

474.504

110.88

106 BS 3

00-00-29

180-00-26

180-04-45

12) 00-04-42

206-25-20

9) 26-25-24

00-00-19

179-55-58

74.45

1012 BS 6

00-00-10

180-00-15

264-54-54

11) 84-54-46

00-00-29

95-05-40

318.69
97.136 318.456
33.02 33.02
92-11-00 10.065
89-59-07

1011 BS 13

00-00-14

180-00-22

264-59-43

12) 84-59-40

00-00-10

95-00-47

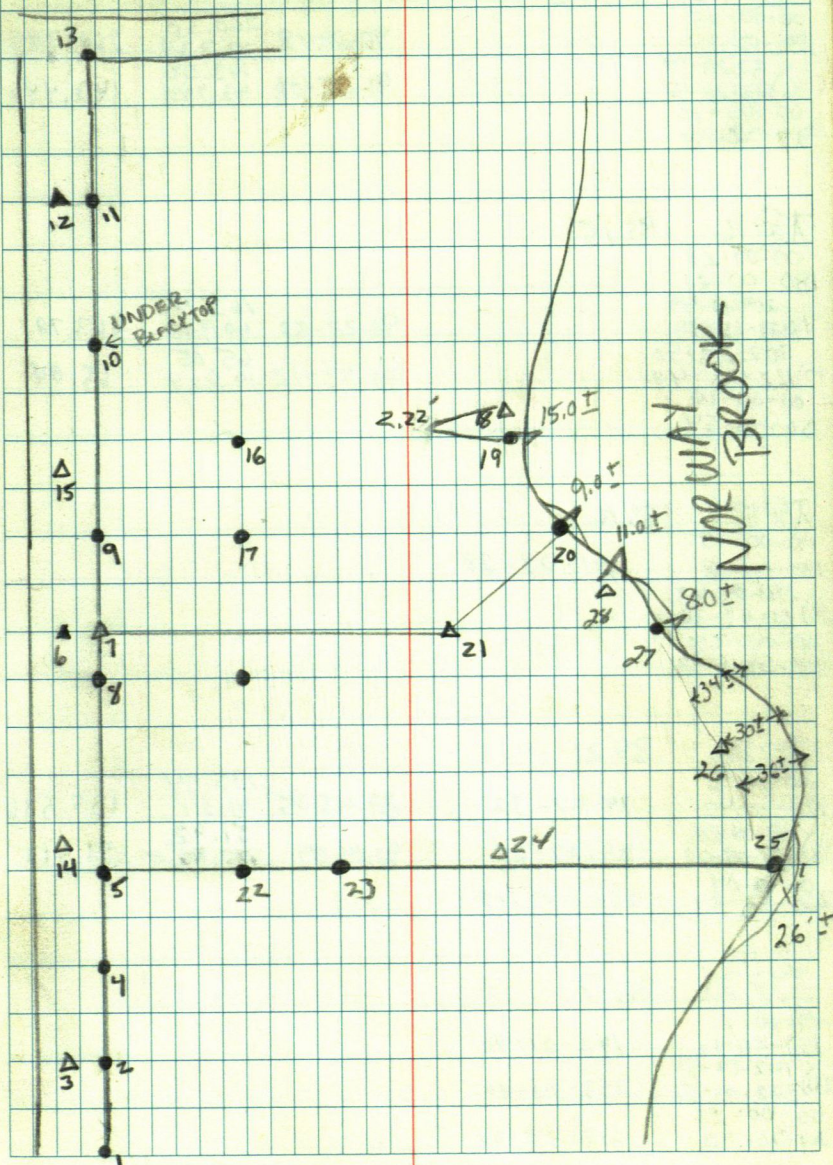
89-46-23 124.96
38.088

124.959

T-2

APRIL 10, 1990 D. FARNHAM-J. WATTSCHKE

5



1015 BS 12

00-00-35
180-00-30
57-28-17
162-28-16
00-00-10
302-22-18

90-28-18 260.30
79.339 260.289
91-35-08 143.50
43.740 143.446

1016 BS 15

00-00-23
180-00-21
209-13-49
182-13-39
302-23-50
171-22-23-47
00-00-10
150-46-54

90-22-53 163.71
49.900 163.707
90-32-12 65.05
19.824 65.041

1018 BS 16

00-00-15
180-00-08 241-04-28
241-04-43
201-61-04-38
00-00-23
118-55-47

1020 BS 21

00-00-36
180-00-42 79-07-32 89-45-35 135.54
99-08-08 41.311 135.536
181-29-08-07 99-07-25 90-14-49 51.92
00-00-04 15.825 51.919
260-52-21 260-52-17

1021 BS 7

00-00-11
180-00-12 142-01-40
201-42-01-51
203-22-01-52 142-01-40
00-00-23
217-58-43 217-58-20

T@7

BS 21

00-00-26			177.42	
180-00-24	181-44-52	90-59-44	54.077	177.991
181-45-18			33.31	
6) 01-45-06	181-44-42	90-44-08	10.152	33.306
00-00-10				
178-15-23	178-15-13			

T@6

BS 14

00-00-13				
180-00-11	268-25-17			
268-25-30				
7) 88-25-27	268-25-16			
326-43-38	326-43-25			
8) 146-43-25	326-43-14			60.57
00-00-32				
91-35-57	91-35-27			

T@14

BS 6

00-00-20			224.17	
180-00-21	95-41-52	90-21-10	68.325	224.161
95-42-12			197.91	
23) 275-42-03	95-41-42	90-54-20	60.329	197.894
99-30-27	99-30-07			
22) 274-30-28	99-30-07	91-08-00	134.87	134.814
128-33-54	128-33-39		41.100	
5) 308-33-56	128-33-35			42.233
00-00-15				
264-18-27	264-18-12			

T@23

BS 14

00-00-12				
174-59-58	171-51-03			
171-51-15				
24) 351-51-14	171-51-16			
00-00-16				
188-08-56	188-08-40			

T@24

BS 25

00-00-05			341.12	
180-00-07	179-35-28	90-50-17	103.976	341.086
23) 179-35-33			223.86	
359-35-29	179-35-22	89-44-00	68.231	223.854
00-00-18				
180-24-50	180-24-38			

TC25 BS24

00-00-41	
180-00-33	55-31-33
20) 55-32-14	
20) 235-32-11	55-31-38
00-00-02	
304-28-18	304-28-12

TC26 BS25

00-00-09			164.95	
180-00-10	170-52-52	90-29-26	50.276	164.942
170-53-01			162.21	
20) 350-53-00	170-52-50	90-15-50	49.443	162.210
00-00-18				
189-07-32	189-07-14			

TC27 BS26

00-00-35	
180-00-35	164-46-26
164-47-01	
20) 344-46-50	164-46-15
00-00-12	
195-13-51	195-13-39

TC28 BS20

00-00-14			167.51	
180-00-18	196-29-16	89-47-44	51.057	167.508
196-29-30			82.27	
20) 16-29-30	196-29-12	91-53-17	25.074	82.222
00-00-28				
163-31-06	163-30-38			

TC20 BS28

00-00-38	
180-00-34	126-02-30
126-03-08	
20) 306-02-56	126-02-22
00-00-27	
233-57-57	233-57-30

Bill Davis

102

BS1

00-00-35			183.25	
180-00-50	S 20 E	90-54-36	55.856	182.763
90-55-11		94-11-12		
3) 270-55-20	S 69 W	90-54-30	297.24	297.168
00-00-05		88-45-29	90.598	
269-05-34		269-05-29		

103

BS4

00-00-24				
180-00-25	S 47 W	206-28-27		
206-28-57		206-28-35		
2) 26-29-00				
00-00-24				
153-31-43		153-31-19		

104

BS3

00-00-03			872.90	
180-00-01	S 67 W	200-38-07	266.061	872.63
200-38-10		91-25-09		
5) 20-38-09	S 67 W	200-38-08	996.21	996.135
202-41-34		89-18-58	303.645	
6) 22-41-35		202-41-31	322.66	
		202-41-34	98.347	322.643
		90-34-12		

105

BS4

00-00-23				
180-00-23		236-54-12		
236-54-35				
7) 56-54-37	N 56 W	236-54-14		
180-00-13				
123-05-50		123-05-37		

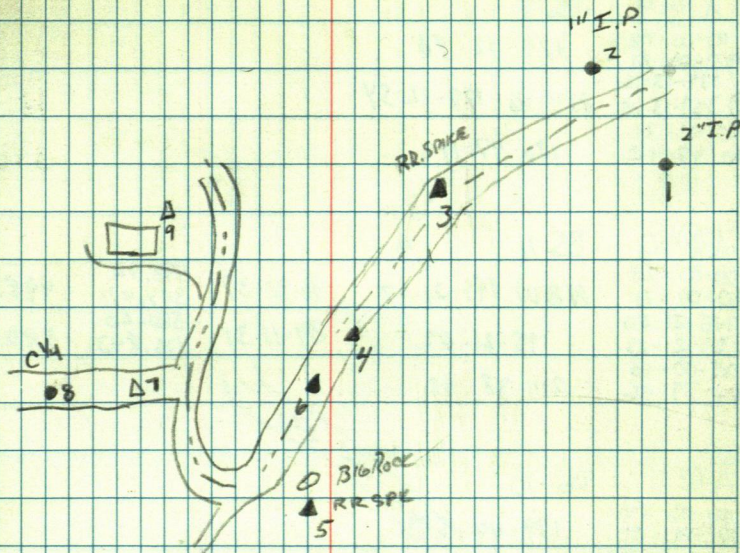
107

BS9

00-00-18			1390.71	
180-00-23	N 38 W	164-03-49	423.949	1390.807
164-04-07		89-19-38		
5) 344-04-21		86-53-26	598.84	597.955
292-22-40			182.526	
8) 112-22-45	S 73 W	292-22-22	247.41	247.146
00-00-02		87-20-42	75.412	
195-56-05		195-56-03		

APRIL 12, 1990 D. FARHAM - J. WATSCHE

9



TC 9

BS 7

00-00-28
180-00-21
179-13-16
10) 359-13-15
00-00-31
180-47-42

179-12-48
N39W 179-12-54
180-47-11

TC 10

BS 11

00-00-13
180-00-11
145-21-20
9) 25-21-13
00-00-15
24-39-06

145-21-02
214-38-48

90-32-39
89-11-31

998.92
304.471
580.20
176.843

998.871
580.137

TC 11

BS 10

00-00-24
180-00-21
149-50-23
12) 39-50-26
00-00-30
210-10-24

149-49-59
N35W 149-50-05
210-09-54

TC 12

BS 11

00-00-47
180-00-56
258-25-24
13) 78-25-18
00-00-45
101-36-29

258-24-37
N42E 258-24-22
101-35-44

90-19-56
75-36-50

581.45
177.224
269.96
82.282

581.434
269.491

TC 13

BS 12

00-00-24
180-00-30
181-36-29
14) 61-36-48
00-00-25
178-24-51

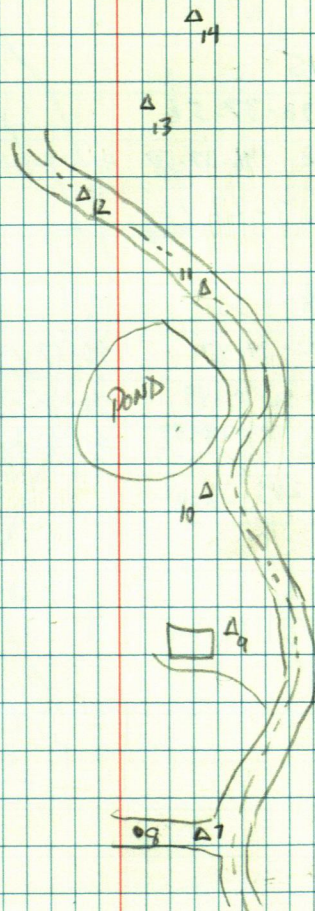
181-36-05
N44E 181-36-18
178-24-36

80-41-16

217.76
66.376

214.894

10



Bill Davis

TC 15 BS 7

00-00-31	233-40-39	90-33-29	1060.85	1060.787
180-00-25			323.346	
233-41-10	N 12 E 233-40-30	84-14-54	547.40	584.643
16) 53-41-03			166.848	
00-00-30	126-19-24			
126-19-54				

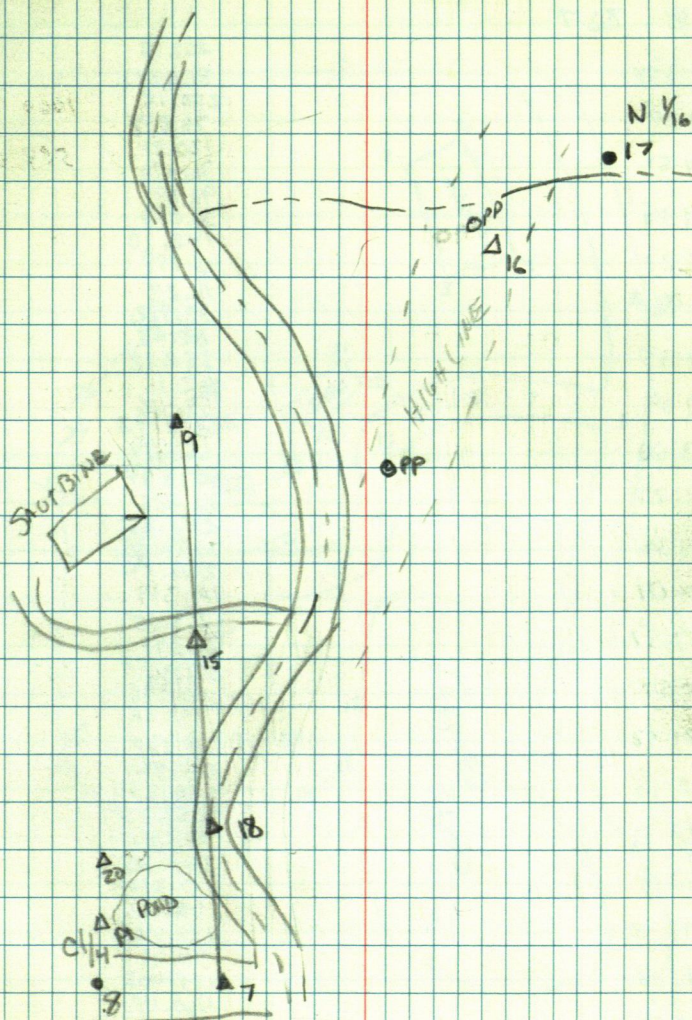
TC 16 BS 15

00-00-14	196-37-56			
180-00-09				
196-38-10	N 31 E 196-37-58	91-47-31	156.22	156.144
17) 16-32-07			47.167?	
00-00-08	163-22-10		47.617	
163-22-18				

TC 18 BS 7

350-00-59	52-34-43	90-17-13	797.22	797.207
180-00-07			242.993	
52-34-43	S 10 W 52-34-49	88-30-08	566.77	566.576
232-34-56			172.753	
74-24-59	S 31 W 74-24-59	92-12-38	195.55	195.404
20) 254-27-12			59.604	
00-00-14	285-36-02			
285-36-16				

APRIL 13, 1990 D. FARNHAM - J. WATTSCHKE



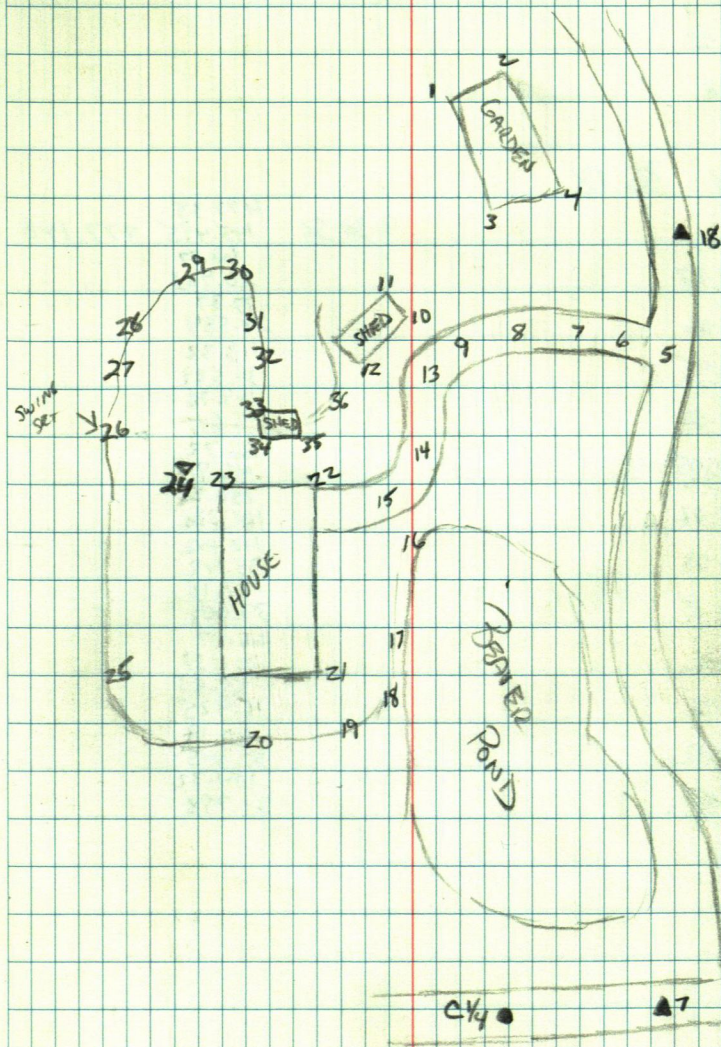
Bill Davis

1018 BS 7

1) 172-13-04	267.78
2) 186-11-04	81.621
3) 150-44-51	250.15
4) 175-39-25	76.244
5) 11-25-27	120.31
6) 36-43-42	36.670
7) 66-41-35	98.69
8) 83-39-04	30.079
9) 84-53-00	142.10
10) 91-31-27	43.299
11) 93-24-30	111.23
12) 89-24-04	33.722
13) 81-57-57	117.69
14) 76-30-54	35.872
15) 77-29-32	162.11
16) 69-32-18	59.706
17) 58-37-19	218.83
18) 58-52-15	66.699
19) 65-43-40	238.94
20) 69-58-48	72.826
21) 73-21-08	242.85
22) 80-21-56	74.020
23) 82-50-27	260.24
	79.319
	263.75
	80.391
	331.36
	100.996
	391.86
	119.440
	185.56
	56.570
	259.35
	79.051
	340.66
	103.833
	483.66
	147.428
	511.49
	155.903
	460.14
	140.251
	411.69
	125.483
	434.39
	132.397

April 13, 1990 D. FARNHAM - J. WATSCHKE

12



TQ18 BS7

86-12-27

21) 172-24-43

273-48-18

TQ24 BS 18

91-38-32 477.35
145.495 477.148

25) 153-21-27

26) 216-18-06

27) 252-30-45

28) 252-31-50

29) 273-40-05

30) 262-20-02

31) 267-56-03

32) 279-44-35

33) 305-31-36

34) 306-57-48

35) 323-41-33

36) 350-31-57

477.35

145.495 477.148

68.77

20.963

77.37

23.584

113.32

34.529

149.76

45.641

186.72

56.914

158.75

48.386

112.02

34.142

127.98

39.009

66.07

20.137

55.53

16.925

60.19

18.345

104.32

31.798

RENO WELLS.

Πο 2 BS3

00-00-29	
180-05-41	N 10° W
176-04-11	
1) 356-04-08	S 40° E
00-00-08	
183-56-29	

87-04-47	234.25 71.393
102-53-03	119.68 36.478

103 BS 2

00-00-08	
180-00-13	
180-08-21	
4) 00-08-26	N O'N
00-00-09	
179-52-05	

TE4 BS5

00-00-04	
179-00-58	N87°E
92-55-58	
3) 272-55-33	
00-00-55	
267-05-32	

	669.77
90-58-01	204.147
	209.36
87-09-07	63.813

105 BS 6

00-00-16	S62°E
180-00-09	
147-48-26	
4) 327-48-32	
00-00-31	
212-12-18	

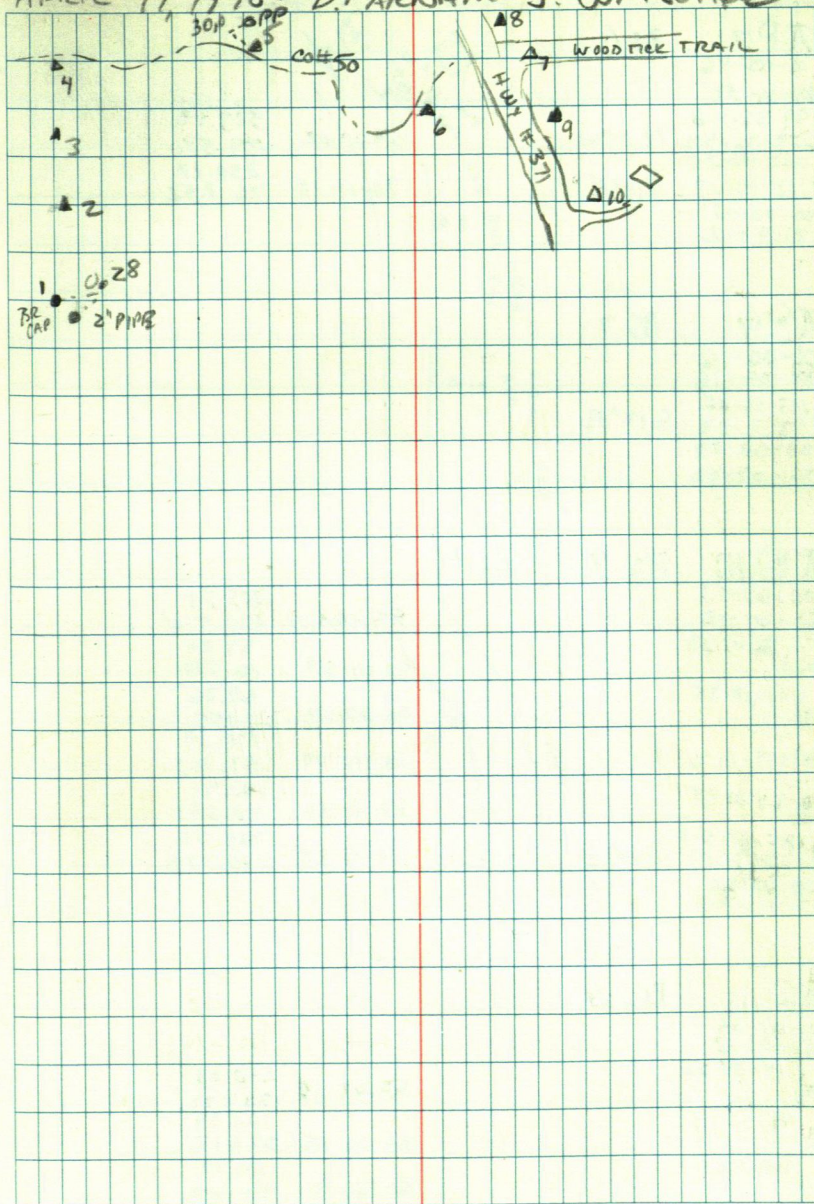
AP 6 B55

00-00-22
180-00-29
119-18-32
7) 229-18-33
00-00-11
240-42-12

89-30-17	1536.68 468.376
89-51-18	479.23 146.070

14

APRIL 17 1990: D. FARNHAM - J. WATSON



14
 $\pi 07$

BS 6

00-00-46

180-00-31

99-36-48

8) 279-36-42

282-41-25

9) 102-41-17

00-00-13

77-19-12

N 20°W

89-10-02

523.42

159.541

250.17

90-11-10

76.252

$\pi 09$

BS 7

00-00-16

180-00-16

10) 183-56-06

03-58-02

00-00-29

76-07-42

S 13°E

$\pi 010$

BS 9

00-00-13

180-00-12

86-13-53

RW1)

87-28-35

RW2)

159-17-47

RW3)

164-02-35

11) 185-18-53

05-17-07

00-00-35

174-41-38

S 10°E

90-14-01

229.77

100.514

54.20

87-30-59

16.520

90-27-14

69.06

86-42-09

21.055

87-10-46

176.39

89-19-35

53.767

87-10-46

170.91

87-10-46

52.091

87-10-46

724.31

87-10-46

220.770

$\pi 011$

BS 10

00-00-25

180-00-18

15-58-56

RW5)

49-53-19

RW6)

119-09-57

89-43-58

240.08

73.171

83-30-05

123.39

86-56-19

37.617

86-56-19

107.10

86-56-19

32.642

15

Hw 371

10

11

12

13

14

15

16

17

18

19

20

21

22

23

24

25

26

27

28

29

30

31

32

33

34

35

36

37

38

39

40

41

42

43

44

45

46

47

48

49

50

51

52

53

54

55

56

57

58

59

60

61

62

63

64

65

66

67

68

69

70

71

72

73

74

75

76

77

78

79

80

81

82

83

84

85

86

87

88

89

90

91

92

93

94

95

96

97

98

99

100

101

102

103

104

105

106

107

108

109

110

111

112

113

114

115

116

117

118

119

120

121

122

123

124

125

126

127

128

129

130

131

132

133

134

135

136

137

138

139

140

141

142

143

144

145

146

147

148

149

150

151

152

153

154

155

156

157

158

159

160

161

162

163

164

165

166

167

168

169

170

171

172

173

174

175

176

177

178

179

180

181

182

183

184

185

186

187

188

189

190

191

192

193

194

195

196

197

198

199

200

201

202

203

204

205

206

207

208

209

210

211

212

213

214

215

216

217

218

219

220

221

222

137-47-17
RWD
12) 181-44-20 S 8° E
01-44-37
00-00-12
178-16-05

T@12 BS11
00-00-17
180-00-09
RW10) 92-02-25
RW7) 94-44-08
RW11) 129-07-32
13) 180-17-10 S 8° E
00-17-48
00-00-28
179-43-11

T@13 BS12
00-00-19
180-00-02
RW12) 88-07-38
88-14-09
RW13) 182-24-23
14) 02-24-33 S 5° E
00-00-51
177-36-21

T@14 BS13
00-00-22
180-00-26
96-27-07
RW14) 162-34-51
15) 342-35-01 S 22° E
00-00-14
197-25-45

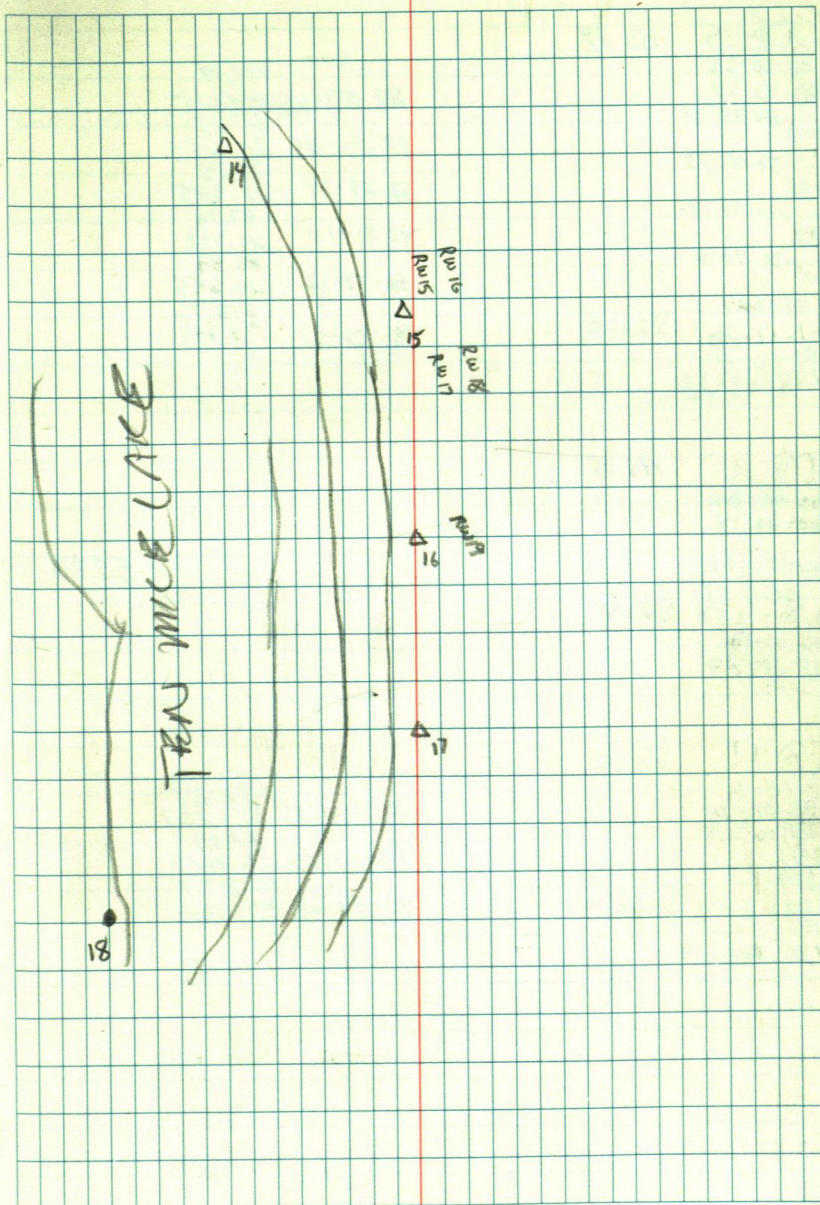
85-43-56 124.94
38.078

90-44-01 453.73
138.298
89-23-40 127.94
38.955
52.74
91-04-35 16.080
162.15
82-28-27 49.426
303.43
89-57-22 92.483

80-01-10 94.94
28.936
80-26-29 129.59
39.501

90-06-30 378.09
115.252
87-15-02 143.07
43.606
90-11-43 833.40
254.025

16



TC 15 BS 14

00-00-35
180-00-39
RW15) 54-25-31
59-08-33
RW14) 134-49-17
RW13) 131-42-00
RW17) 181-17-24
16) 1-17-26 S 22° E
00-00-11
178-43-23

89-51-46 833.39
87-20-26 254.015
86-23-34 67.12
87-21-10 20.459
86-42-13 75.15
90-13-38 22.905
87-21-10 87.70
86-42-13 26.732
90-13-38 80.89
87-21-10 24.655
86-42-13 648.76
90-13-38 197.744

TC 16 BS 15

00-00-06
180-00-14
RW17) 91-17-30
17) 180-12-53 S 22° E
00-00-13
179-47-20

53.20

TC 17 BS 16

01-00-14
180-00-14
RW20) 139-29-35
239-11-17
18) 59-11-14 S 37° W
00-00-13
120-49-09

89-34-28 1152.25
93-19-16 351.207
90-39-00 87.79
310.366

LONGVIEWEE LANDFILL - WELL #4

NO 2	BS 1		
00-00-29		90-23-46	643.45
120-00-34			196.125
228-29-49		91-15-49	419.49
3) 48-49-51	S 40° E		127.860
00-00-36			
131-31-14			

NO 3	BS 2		
00-00-15		88-57-14	419.44
120-00-06			127.845
116-11-10		92-07-58	243.61
4) 296-11-18	N 80° E		74.252
00-00-37			
243-49-39			

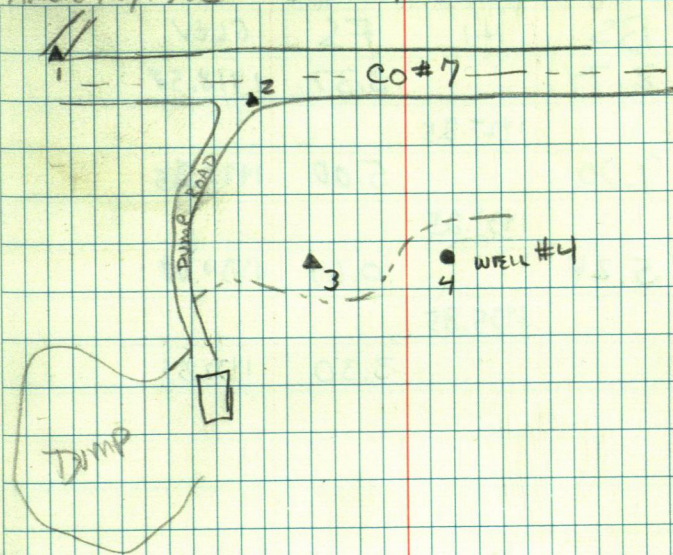
ELEVATIONS TO WELL #4

	BS	HI	FS	
Bm #1	3.34		1432.56	2nd N. PINE
		1435.90		
TP	0.32		5.25	1430.65
		1430.97		
TP	6.68		10.80	1422.17
		1426.85		
TP	3.11		8.79	1418.36
		1421.47		
Bm	10.94		10.90	1410.57 #4 WELL SE CORNER of SPO
		1421.51		
Bm	9.32		8.95	1412.58 #4 WELL SPIGOT ON PUMP
		1421.88		

18

APRIL 18, 1990

D. FARHAM - J. WATSCHE



	BS	HI	FS	GL EV
TP	8.74		3.37	1418.57
		1427.25		
TP	9.00		5.00	1422.25
		1431.25		
TP	5.24		0.64	1430.61
		1435.85		
Bm #1			3.30	1432.55

CHRISTMAS POINT

102

BS1

00-00-21			1475.91	
180-00-21	S85°W	207-18-35	90-14-02	1475.892
207-18-56			1741.99	
3) 27-19-05	S65°E	207-12-45	88-58-34	530.953
00-00-11				1741.695
152-41-20		152-41-09		

103

BS2

00-00-11				
180-00-05			175-59-26	
195-59-37				
4) 15-59-42	S53°E	195-59-37		
277-28-09		277-27-58		
5) 77-28-06	S28°W	277-28-01		
00-00-53				
82-32-54		82-32-01		

104

BS3

00-00-14			1466.77	
180-00-38		285-19-14	91-38-36	1466.163
285-19-29			88.22	
6) 105-19-34	S50°W	285-18-56	95-04-02	87.872
00-00-29			26.889	
74-41-26		74-40-57		

105

BS3

00-00-31			546.79	
180-00-32		137-59-55	89-31-59	546.767
138-00-26			166.660	
1) 218-00-29	S14°E	137-59-56	87-58-12	508.11
60-00-28				507.78
222-00-33		222-0-05		

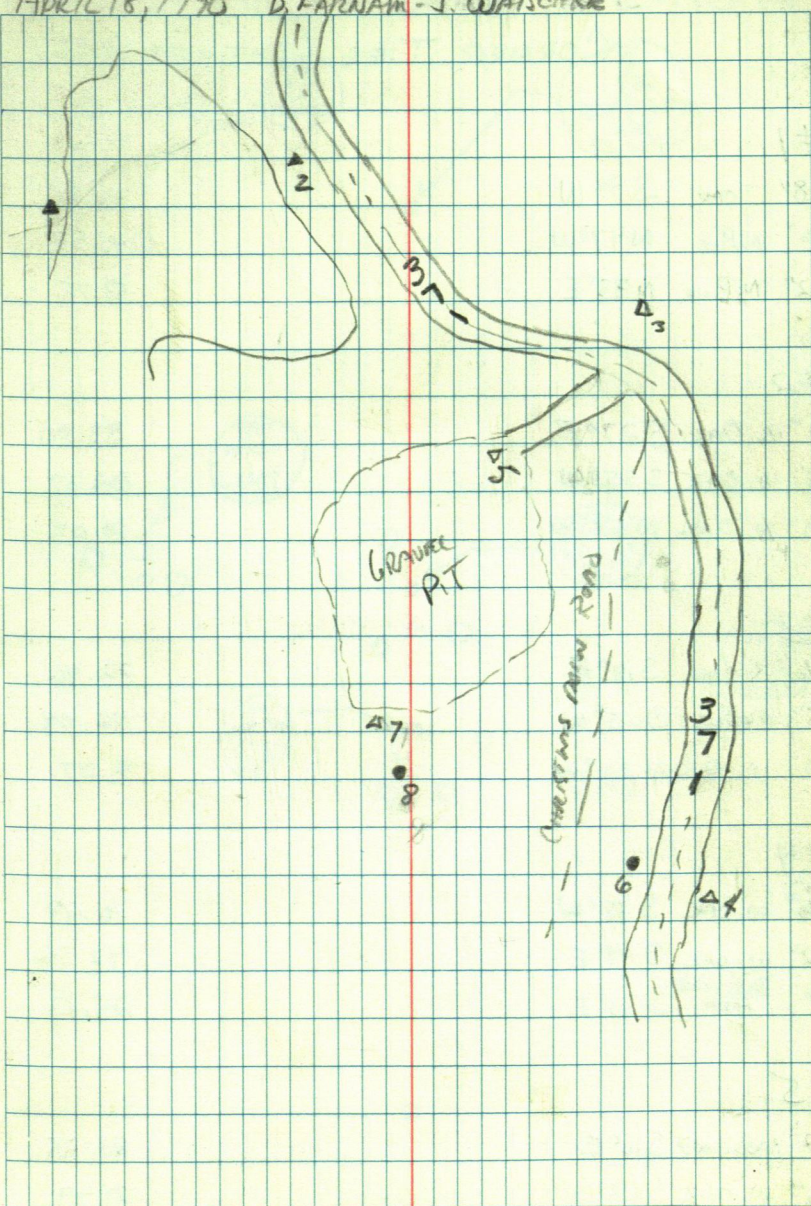
107

BS5

00-00-13				
180-00-14			164-27-26	
164-27-39				
8) 344-27-35	S29°E	164-27-24	96-32-55	63.17
00-00-10				19.253
195-33-00		195-32-20		62.756

APRIL 18, 1990 D. FARNAM - J. WATSCHE

20



02 Jim Adams

CORNER TIES (CONTINUED Pg 56)

#1

8" OAK	S90°W	42.81
16" N. PINE	N47°W	43.57
12" N. PINE	N33°E	53.75

#2

12" W. OAK	S27°E	33.30
18" W. OAK	S35°W	36.17
10" W. OAK	N58°W	20.02

#3

16" R. OAK	S18°E	22.46
8" MAPLE	S65°W	36.04
10" W. OAK	N22°W	41.07

#4

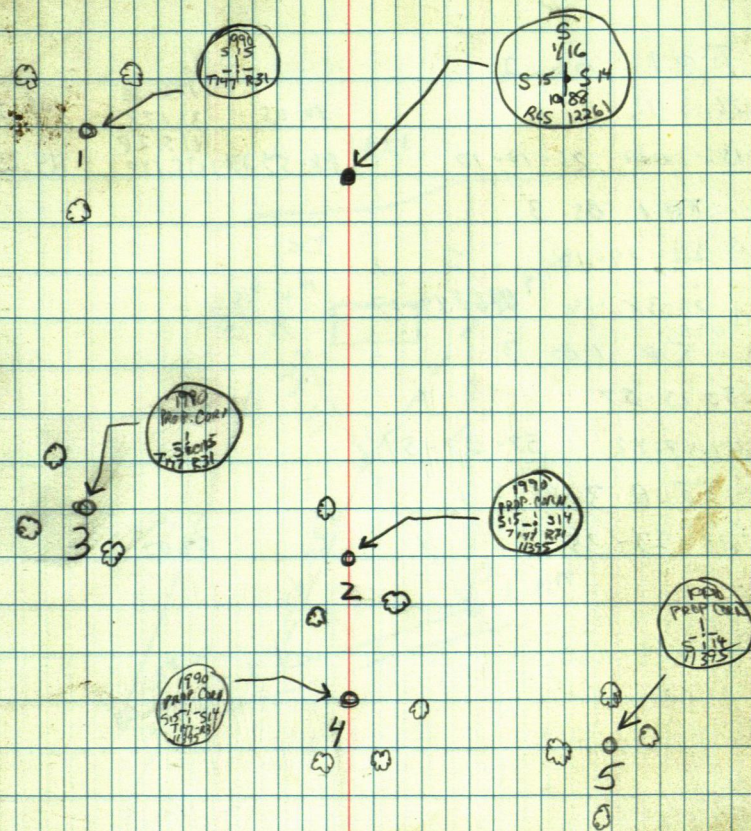
16" W. OAK	S18°W	16.49
12" W. OAK	S74°E	42.36
8" BASS WOOD ASH	S33°E	25.17

#5

12" BASS WOOD	S16°E	21.55
16" W. OAK	S69°W	27.49
18" BASS WOOD	N1°E	40.63
6" W. OAK	N62°E	32.97

21

APRIL 23, 1990 D. FARNAM - J. WATSCHE



BUD MELTING
GERRY LEVING

LOT 9 ROCKY PT

$\pi @ 1$ BS 2

76-10-12

70-05

102.29

31.177

102.288

3 152-20-20 76-10-10

88-57-24

115.28

35.140

115.264

$\pi @ 1$ BS 3

216-49-19

4 ³⁴⁰ 73-38-14 216-49-07

⁹³³

$\pi @ 1$ BS 3

57-23-57

5 114-47-42 57-23-51

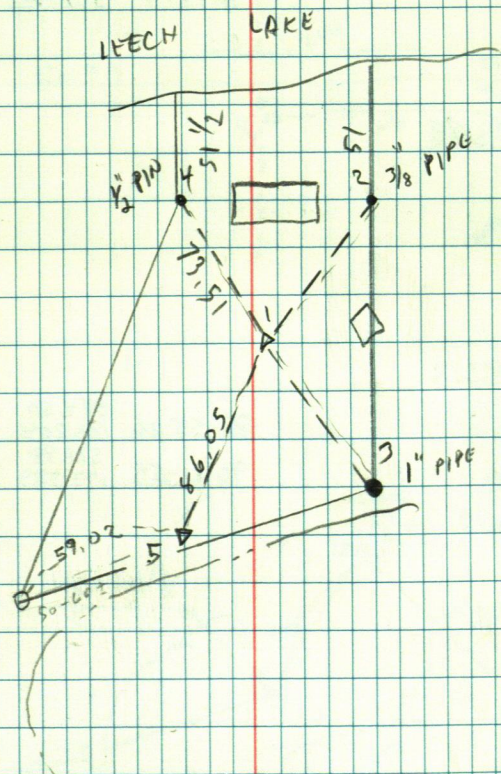
$\pi @ 3$ BS 1

313-23-35

59.02

E. CORD
F. WATSON
D. FARMER
4-24-90

22



STONY LAKE CAMP

TQ2 BS1

00-00-28		1343.97
180-00-45	89-48-17	409.642
180-01-45		697.97
3) 00-00-58	90-15-00	212.743
00-00-10		
179-58-55		

TQ3 BS2

00-00-16
180-00-24
4) 180-38-40
00-38-50
00-00-29
179-22-03

TQ4 BS3

00-00-15		594.50
180-00-52	88-55-26	181.204
88-44-07		581.98
5) 288-45-02	90-21-59	177.389
00-00-07		
271-16-23		

TQ5 BS4

00-00-13
180-00-19
180-06-12
6) 00-06-23
00-00-11
179-54-10

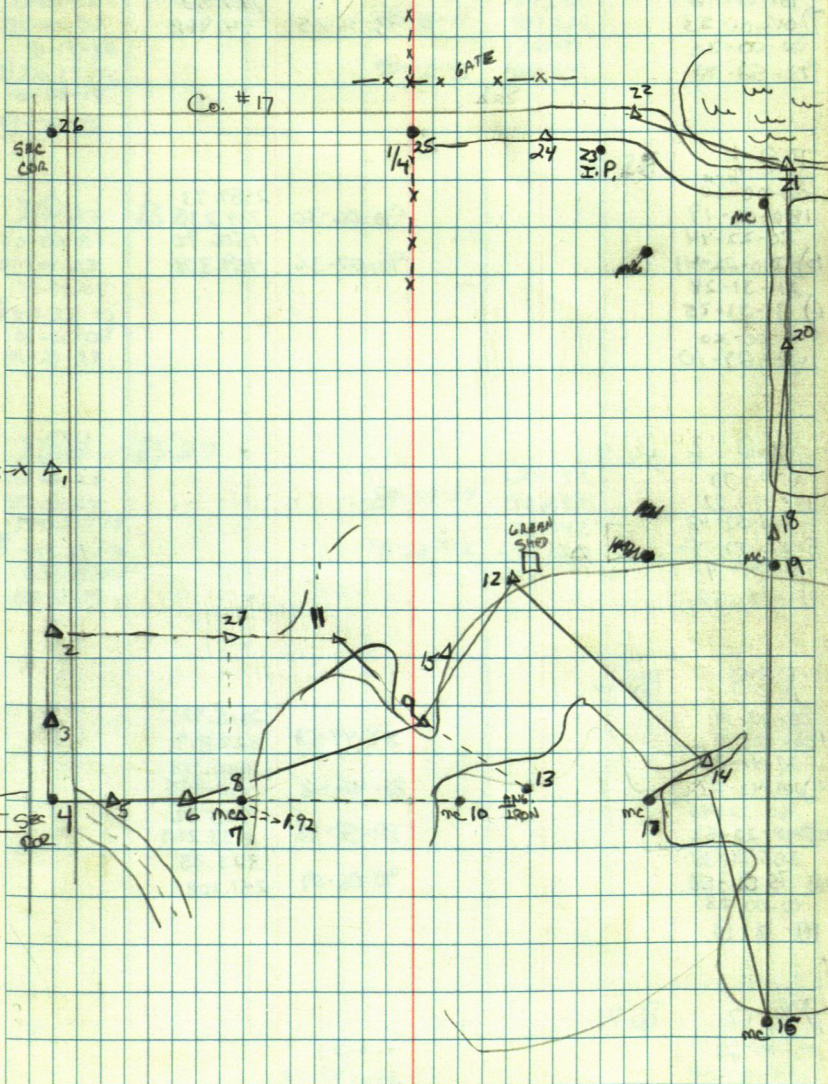
TQ6 BS5

00-00-14		634.18
180-00-20	88-39-03	193.298
180-16-47		147.51
8) 00-16-52	93-31-53	44.960
00-00-15		
179-43-34		

OK USE TO MO1

23

APRIL 25, 1990 D. FARHAM - J. WATSCAPE



EQ6 BS5

00-00-15		634.18
180-00-18	88-39-03	193.298
181-01-46		147.53
7) 01-01-53	93-46-25	44.968
00-00-22		
178-58-48		

EQ7 BS9

00-00-10		2589.33
180-00-19	90-06-30	789.230
30-22-44		1506.92
10) 210-22-41	90-07-36	459.308
211-31-28		
6) 31-31-25		
00-00-20		
148-29-10		

EQ6 BS9

0-0-30	
120-0-32	
208-52-43	
5) 28-52-46	
0-0-9	
151-7-52	

EQ9 BS6

00-00-19		2715.93
180-00-40	89-44-58	827.819
27-42-08		1610.48
11) 101-42-27	88-41-48	490.875
160-22-45		765.32
12) 240-22-52	89-58-48	233.269
255-06-38		823.85
3) 75-06-58	90-06-09	251.108
00-00-23		
111-38-13		

EQ12 BS14

00-00-26		0-0-22
180-0-24		290-45-50
9) 69-14-50		
249-14-54		
15) 103-46-11		
283-46-09	89-7-35	297.11
		90.561

24

CONTINUED FROM PAGE #25

EQ2 BS1

00-00-13		1343.92
180-00-07	89-48-11	709.626
90-19-39		1341.91
27) 270-19-46	90-20-45	409.014
00-00-19		
269-40-45		

EQ27 BS2

00-00-21	
180-00-23	
178-33-03	
11) 358-33-06	
00-00-08	
181-27-27	

EQ11 BS27

00-00-23		624.32
180-00-24	89-59-24	190.293
179-27-17		1610.42
9) 359-27-14	91-22-42	490.860
00-00-25		
180-33-39		

TC14 BS12

00-00-18		
180-00-15	90-01-55	949.93
184-12-21		594.340
16) 04-12-17	89-54-13	730.99
240-39-54		222.806
17) 60-39-55	90-58-28	178.94
00-00-28		54.544
175-48-38		

TC16 BS18

00-00-12		
180-00-16		
335-54-35		
14) 155-54-38		
00-00-11		
24-05-50		

TC18 BS16

00-00-02		3453.30
180-00-00	90-16-25	1052.566
20-34-48		56.38
11) 200-34-47	107-02-37	17.185
179-55-39		1205.39
20) 359-55-27	89-34-01	367.403
00-00-04		
180-04-29		

TC20 BS18

00-00-10		
180-00-06		
178-24-07		
21) 358-24-05		
00-00-17		
181-36-21		

TC21 BS20

00-00-20		743.53
180-00-28	88-06-40	226.626
129-04-03		723.88
22) 389-04-08	88-51-05	220.639
00-00-17		
230-51-38		

BS

VERT.

25

TC22 BS21

00-00-11		
180-00-06		
131-33-33		225.66
23) 311-33-40	86-25-47	68.780
131-33-05		
24) 317-38-10		
00-00-34		
220-22-35		

TC24 BS22

00-00-10		
180-00-21	93-10-36	554.74
82-18-35		169.084
25) 02-18-40	90-23-11	1482.16
00-00-32		451.764
177-42-04		

TC25 BS26

00-00-12		
180-00-08		
179-41-51		
24) 359-41-49		
00-00-13		
180-18-48		

TC26 BS25

00-00-06		
180-00-10	90-19-45	2658.04
90-29-23		810.176
2) 210-29-30	89-55-01	2689.54
00-00-11		819.773
269-30-50		

TC1 BS26

00-00-31		
180-00-37		
179-45-48		
2) 389-45-59		
00-00-11		
180-14-54		

GO TO PAGE #24 FOR END OF TRAVERSE

BLUE LICK

T @ 1 BS 9

2

96-02-30 214.29
65.297 213.039

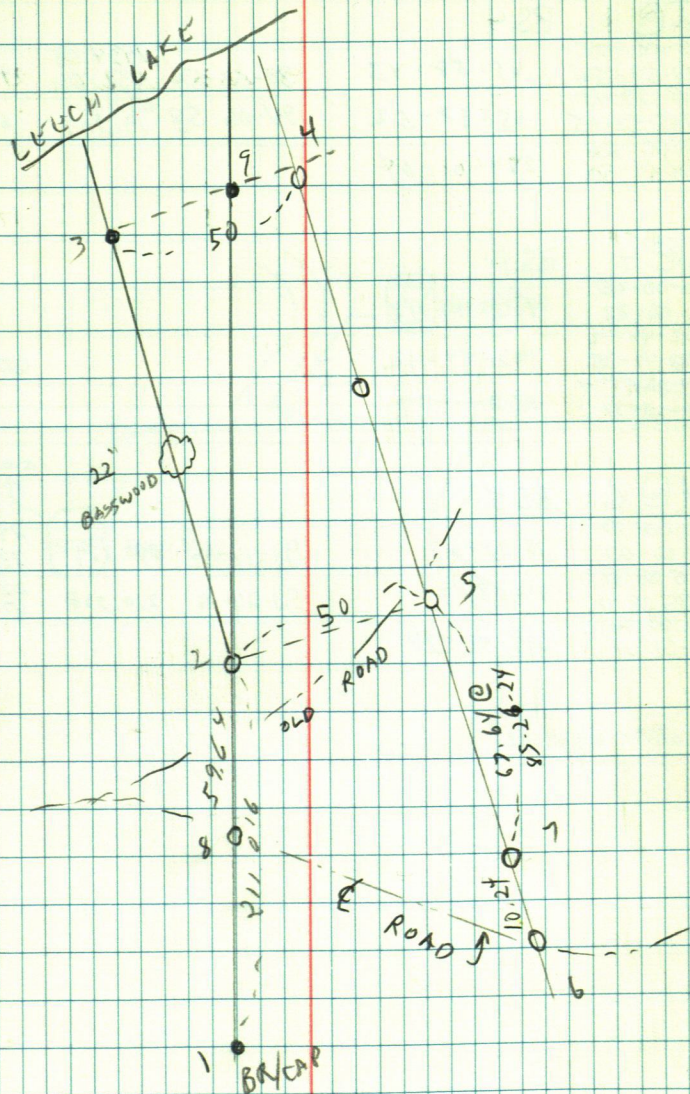
T @ 5 BS 4

269-44-04

93-35-56 177.98
54.249 177.629

2

26



LONGVILLE LANDFILL

T@1 BS4

00-00-02			1434.08	
179-59-54	65-58-43	89-03-54	437.106	1433.88
65-58-45			63.16	
2) 245-58-45	65-58-52	94-06-58	19.249	62.993
00-00-26				
294-01-30	294-01-04			

T@4 BS1

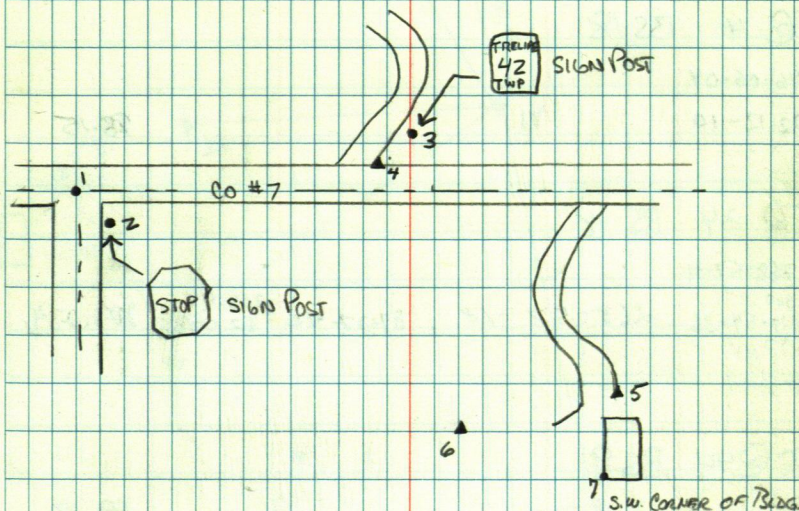
00-00-25				
180-00-23	102-44-17			
102-44-42				
3) 282-44-35	102-44-12		60.25	
179-00-57				
257-15-34	257-11-37			

T@6 BS5

00-00-10				240.94
180-00-07	15-08-29	91-44-16	240.829	73.439
15-08-39				
7) 195-08-41	15-08-34	91-27-19	220.708	220.78
00-00-06				67.294
344-51-34	344-51-28			

APRIL 26, 1990 D. FARNAM - J. WATSCHE

27



BILL DAVIS

7 @ 18 BS 7

61-13-54

40 122-27-28

153-12-44

42 306-37-55

86-12-39 ^{675.11}
205.768 673.622

53.50

7 @ 4 BS 18

246-06-04

4) 132-12-10

98.15

7 @ 24 BS 18

268-57-31

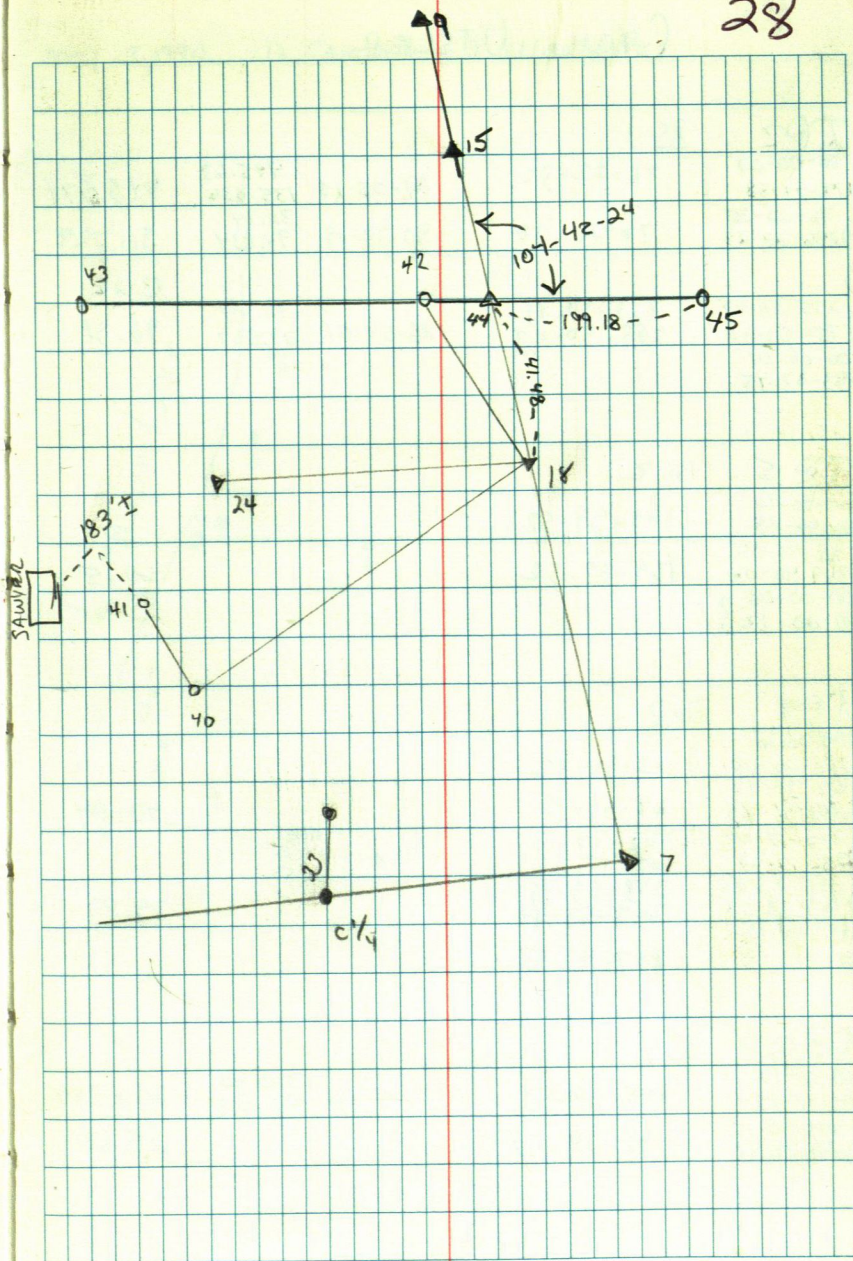
43) ^{300 00} 177-54-36 268-57-18 87-27-42 ^{203.44}
^{537 114} 62.008 203.234

7 @ 44 BS 9

45) 104-42-24

199.18

28



CECIL UTSER

102

BS 1

00-00-03	76-22-32	89-05-10	445.63	445.574
179-59-58			135.830	
76-22-35	76-22-30	90-23-19	311.14	311.129
4) 256-22-28			94.834	
3)				13.26
255-50-47	255-50-44		90.44	
5) 75-50-41	255-50-43	86-54-51	27.567	90.31
00-00-24				
283-37-45				

105

BS 2

00-00-14	169-39-52			
180-00-14				
169-40-06				
6) 349-40-06	169-39-52			60.15
00-00-08				
90-20-12?				

104

BS 2

00-00-10	62-31-32			
180-00-08				
62-31-42	62-31-15			40.04
8) 242-31-23				
102-17-20	102-17-10			
11) 282-17-20	102-17-12			
343-53-55	343-53-45			79.89
7) 163-53-52	343-53-44			
60-00-06				
257-43-59	257-43-53			

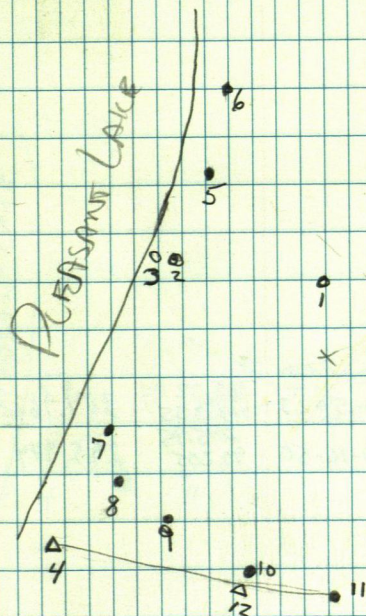
1012

BS 4

00-00-17	109-39-58	92-05-16	270.40	270.219
180-00-15			82.418	
105-40-15	109-39-37			25.68
10) 285-39-52				

my 3, 1990 - D. FARNAM - J. WATSCHE

29



CECIL WATSON

১০১১

BS 4

00-00-11			403.62	
180-00-15	85-18-31	92-05-57	123.023	403.347
85-18-42			274.65	
1) 265-18-39	85-18-24	91-07-04	89.810	294.594
00-00-03				
274-41-35	274-41-32			

te 1

BSH

20-00-12	
180-00-22	96-01-43
96-01-55	
2) 270-01-59	96-01-37
238-23-44	238-23-32
13) 38-23-45	238-23-23
00-00-17	
121-36-45	121-36-28

५७१३

BS 1

00-00-05	145-22-55	90-59-23	385.02	384.962
140-00-05			117.355	
145-23-00	145-23-00	90-16-50	295.95	295.944
14325-23:08			90.205	
00-00-13	214-36-57			
214-37-10				

TC 14

BS 13

00-00-18	
180-00-23	204-18-38
204-18-56	
15) 24-18-56	204-18-33
00-00-25	
155-41-49	155-41-24

 π K

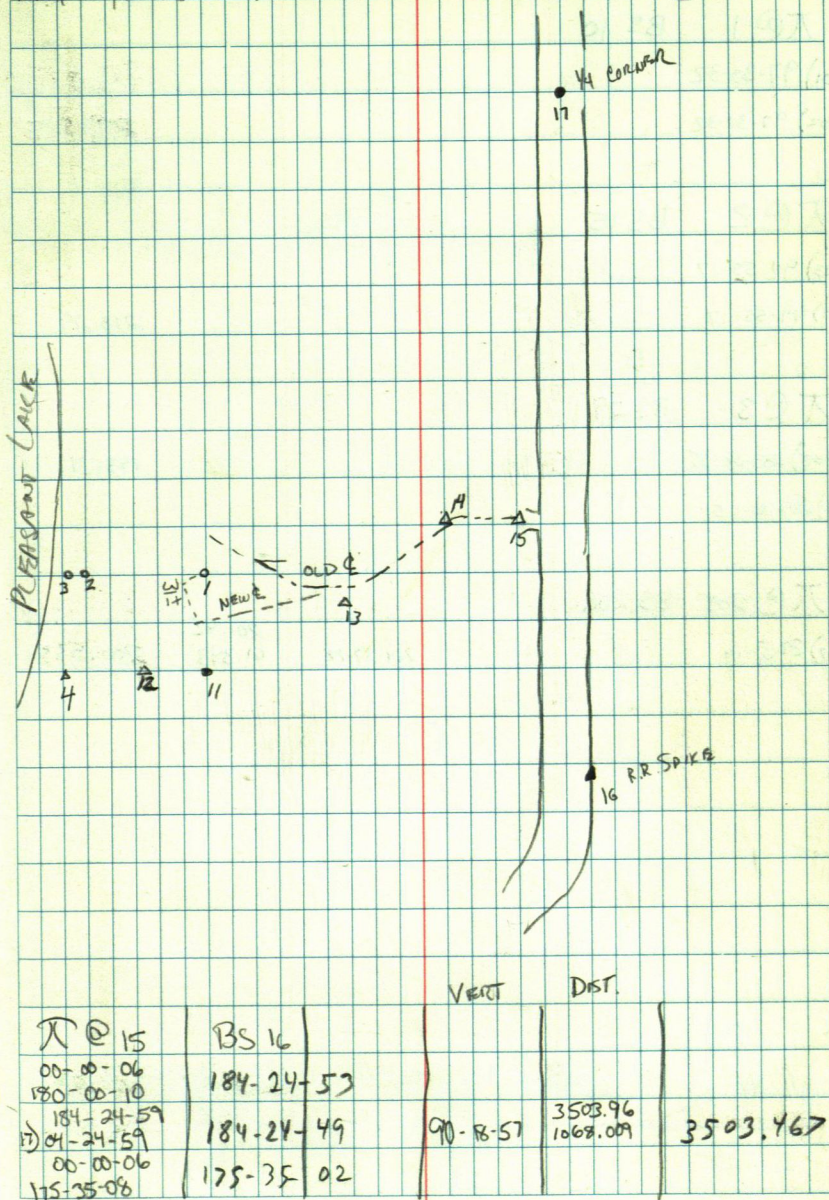
BS 16

00-00-01				783.09	
180-00-00	102-21-12		90-11-32	238.662	783.076
102-21-13				236.87	
140-21-08	102-21-08		90-44-27	72.196	236.846
00-00-04					
257-38-53	257-38-49				

MAY 3, 1990

D. FARNHAM - J. WATSON

30



RENO WELLS

$\pi @ 1$

BS 10

201) 97-30-32

202) 97-30-32

271.65

$\pi @ 2$

BS 15

203) 94-55-17

204) 94-55-17

213.29

$\pi @ 3$

BS 29

205) 289-38-55

206) 289-38-55

143.31

$\pi @ 205$

BS 206

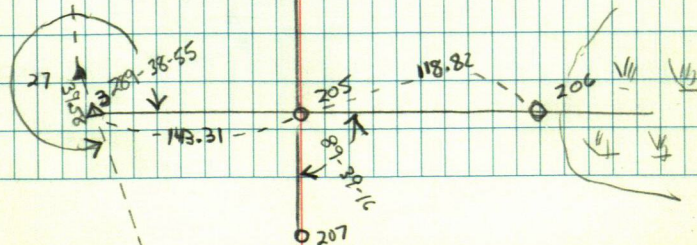
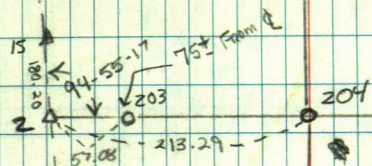
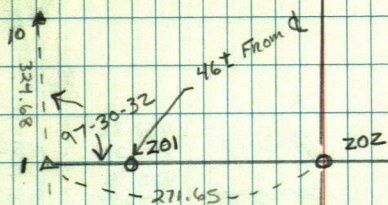
207) 89-37-16

264-37-22

201.92
61.393

200.5330

May 4, 1990 - D. FARNAM - J. WATSCHE 31



Liken Inc.
P.O. Box 862
Walker, MN 56484
218-547-3905

S A L E S R E C E I P T

Invoice No. 4472

Date: 07/19/95

Sales Rep: WEG

Bill to: CURO SURVEYING

P.O. # :

Ship to: CURO SURVEYING

HACKENSACK, MN
56452-
Attn. W. CURO

HACKENSACK, MN
56452-
Attn. W. CURO

Ln No	Qty	Tax	Item	SKU	Unit Price	Total
1	1		HP 4P PAPER INPUT SWITCH	HP4PINPUTSWITCH	10.0000	10.00
2	1	N	R&R PAPER INPUT SWITCH	LABOR PER HALFHR	19.5000	19.50

Notes: THANKYOU FOR YOUR BUSINESS

AMOUNT TENDERED: 30.15

CHANGE DUE 0.00

TYPE OF PAYMENT- CASH

SUBTOTAL: 29.50

Tax : 0.65

: 0.00

TOTAL: 30.15

RENO WRENS

NO 4 BS34

208) 106-15-23

209)

210)

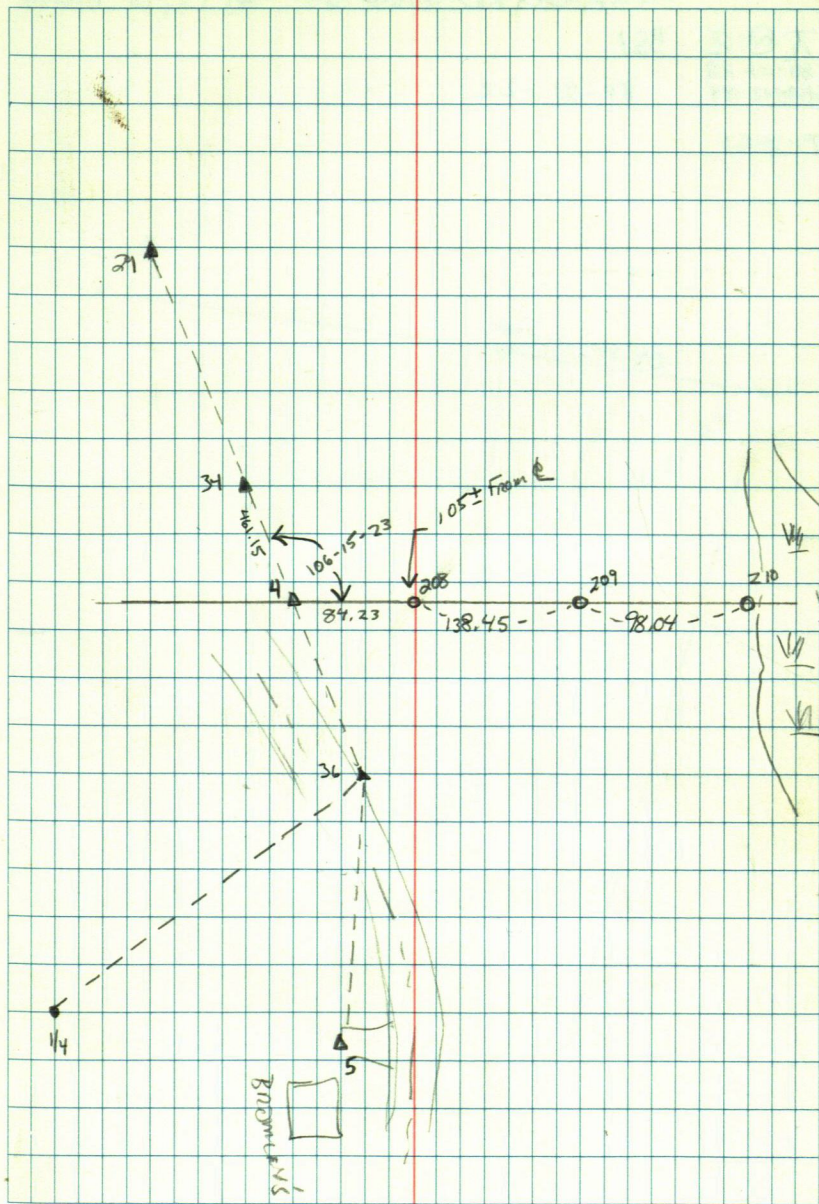
NO 36 BS ~~34~~ 34

187-49-00

5) 15-37-38

172-11-30

89-31-17	1152.22	1152.1819
	351.201	
	920.76	
88-42-07	280.648	920.5202



FLOYD ROBERG

$\pi @ 2$ BSI

80-21-28
3160-42-44

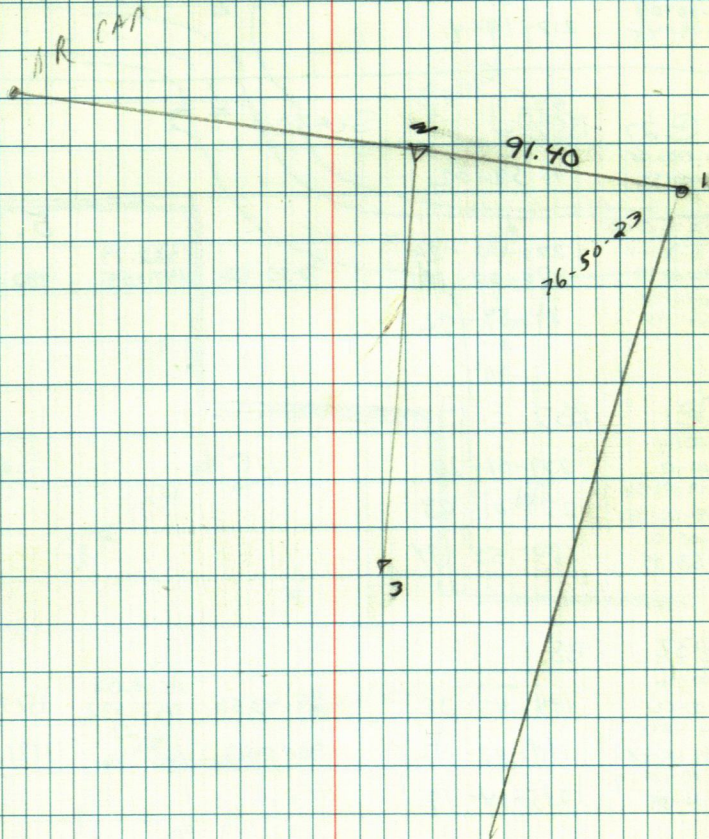
80-21-22

271-38-53

MAY 8, 1990

E. CUNO - D. FARNAM

33



STONY LAKE Camp

№ 21

BS 20

SKETCH #1

00-00-12	2-11-04	88-03-24	743.98	743.0512
150-00-12			226.614	
21) 02-11-22	2-11-00	90-00-52	112-73	112.7293
182-11-13			34.360	
142-40-42	142-40-24		588.15	
28) 32-40-41	142-40-29	90-16-31	179.268	588.1404
00-00-04				
217-19-45	217-19-41			

π @ 27

BSZ

SKETCH # 2

00-00-18				
180-00-30	95-52-02			
30) 95-52-20				5.91
270-00-47	270-00-29			
31) 90-00-48	270-00-18	90-30-50	482.79 147.155	482.7695
00-00-08				
89-59-40	89-59-32			

Te,

BS2

00-00-14	
180-00-17	279-01-20
279-01-34	
3) 99-01-40	279-01-23
00-00-01	
80-58-35	80-58-34

$\pi @ 32$

BS 1

00-00-16				1518.02	
180-00-06	144-45-35		89-43-56	462.692	1517.996
144-45-51				1121.21	
33) 324-45-48	144-45-42		90-13-49	341.746	1121.198
180-00-20					
215-14-39	215-14-19				

TE 33

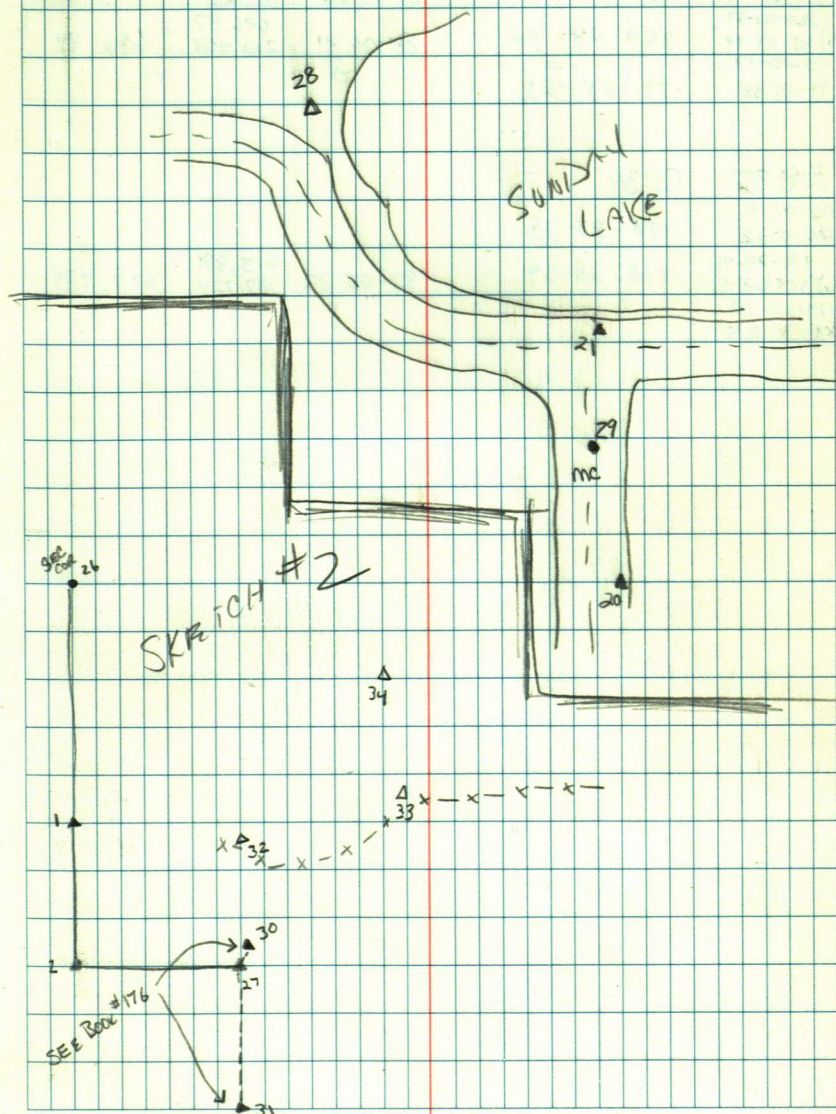
BS 32

00-00-26	126-24-13
180-00-29	
126-24-39	126-24-09
341-206-24-38	186-45-18
FRANCE 186-45-44	233-35-38
00-00-02	
233-35-40	

MAY 9, 1990 E. CURRO D. FARNHAM

34

SKETCH #1



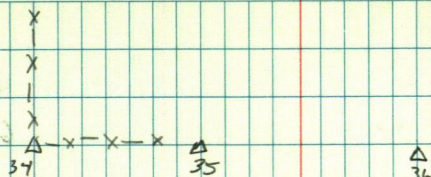
STONY LAKE CAMP

$\pi @ 34$	BS 33			
00-00-12				
180-00-04	260-04-21	89-46-25	1106.40 337.231	1106.387
260-04-33			696.87	
35 80-04-34	260-04-90	88-06-21	212.408	696.49
00-00-13				
99-55-38	99-55-25			

$\pi @ 35$	BS 34			
00-00-11				
180-00-12	178-28-35			
178-28-46			615.89	
36 158-28-51	178-28-39	92-05-22	187.724	615.479
179-00-59				
181-31-25				

260
100

35

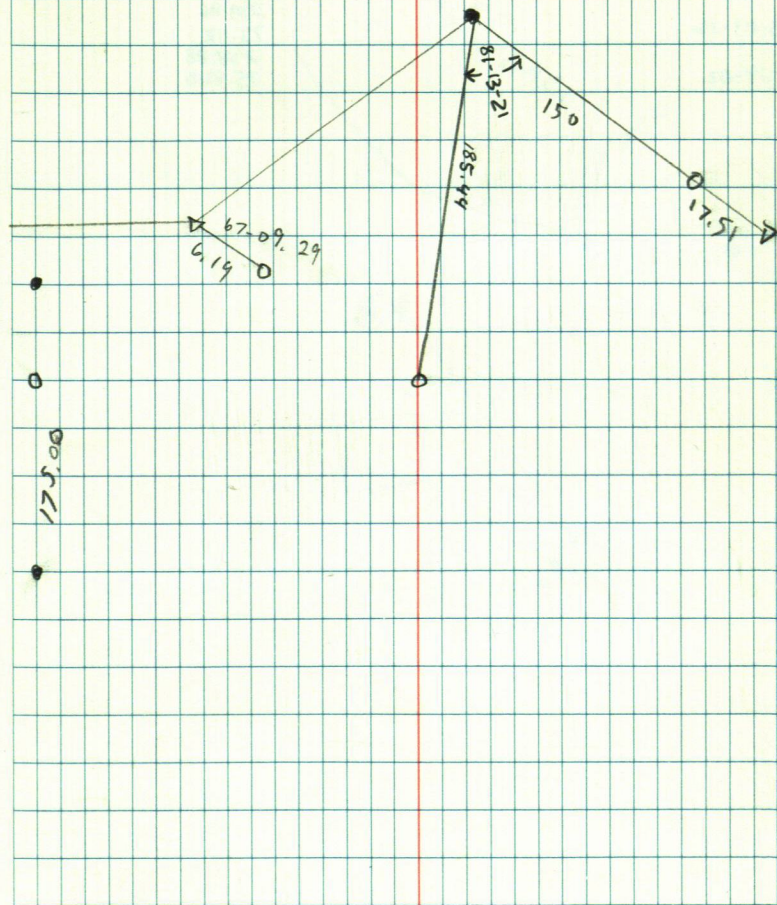


33

LEO FURNSTAHL

38° cold wind

GD
DALE
5-10-90 36



ARLAND BENSON

TC34 BS 35

34)

1) 329-01-03

2) 339-36-27

3) 352-24-17

4) 07-01-04

5) 23-03-36

6) 53-24-02

191.15

58.271

89.41

27.253

69.52

21491

89.31

27.222

321.33

97.942

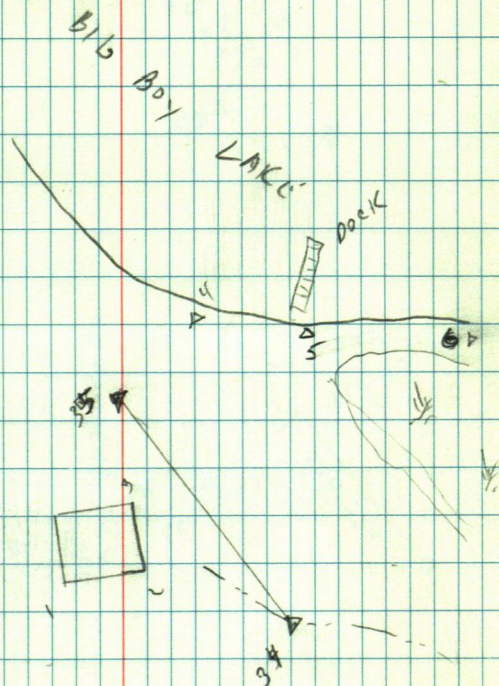
239.86

73.112

248.88

75.860

37



7086 BS 54

54) 181-12-46.

91-24-42

108.82

33.166

108,783

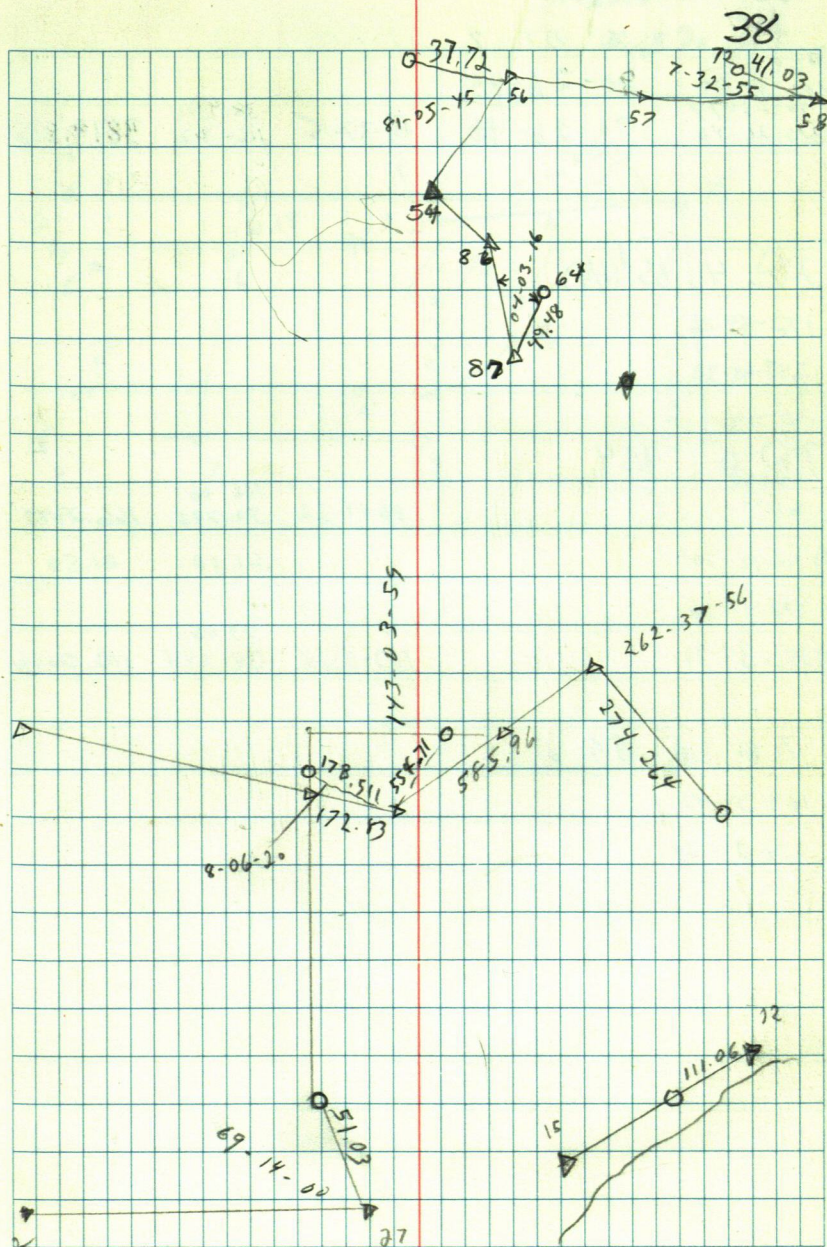
81) 02-25-22 } 181-12-41

93-24-50

215.18

65.589

214.801



GENE WALTERS

9-0-2	1/4 135 2			
18-0-00	90-26-45			
90-26-47			3819.91	
3 220-26-46	90-26-46	89-37-15	1164.312	3819.815

$\tau @ 4 \text{ BS}'(1/4)$

172-54-26

345-48-32

$\pi @ 6$	354
-----------	-----

86-14-32	166-66 50,796	166.2977
----------	------------------	----------

7) 111-12-28

81.50	81.50
-------	-------

178-17-36

8) 356-37-39

	113.00	
107-5-58	34.444	110.0616

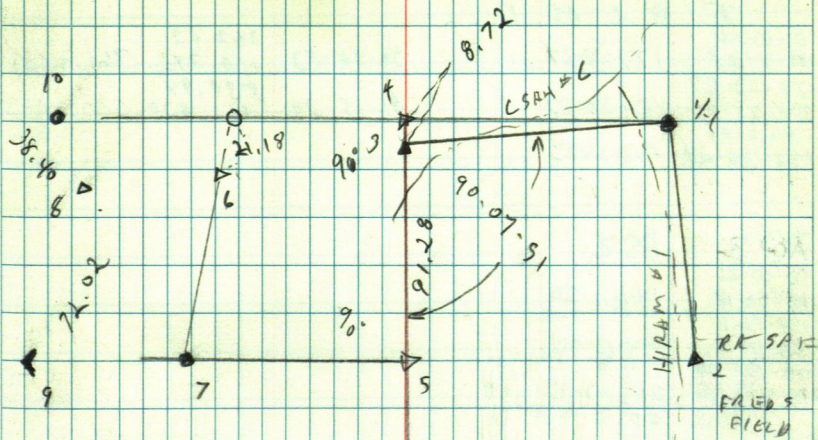
70 8 9 1

9 129-31-07

10 274-23-28

CD
DALY

5-12-90 39



Brn HAAS

T	@ 2 BS 1			
0-0-16			362.02	
180-0-28	177-23-37	90-48-53	110.345	361.9839
177-23-57			530.94	
352-23-55	177-23-27	91-15-39	161.830	530.8083
0-0-01				
182-36-24	182-36-23			

TQ 3	BS 2			
00-00-21				
180-00-18	144-12-50			
144-13-11				
4) 24-13-18	144-13-00			
00-00-05				
215-47-10	215-47-05			

TQ 4	BS 3			
00-00-15			369.36	
180-00-23	276-27-52	86-52-12	112.580	368.8059
276-28-07			795.84	
5) 96-28-11	276-27-48	91-11-40	242.569	795.6586
00-00-18				
93-32-27	83-32-09			

TQ 5	BS 6			
0-0-4				
130-0-1	175-02-35	89-42-45		
175-2-39				
7			8.40	
342-44-57	342-44-53			
4	162-44-55	342-44-54		
0-0-10				
12-05-11	17-05-01			

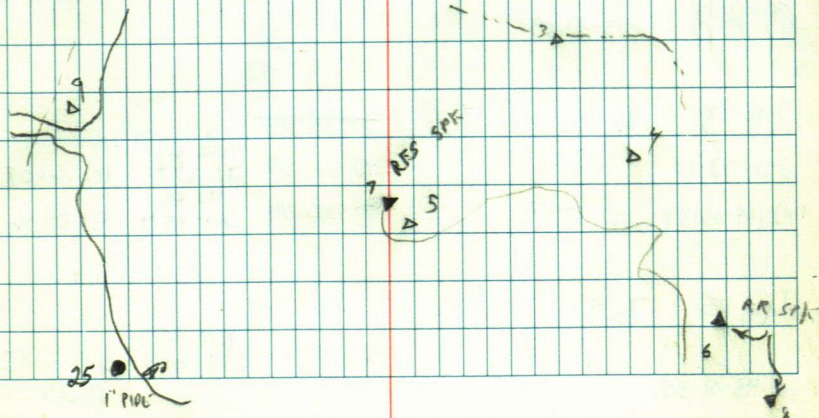
TQ 6	BS 9			
0-0-0			3843.35	
180-0-5		90-0-50	1171.456	3843.3378
4-26-28	04-26-28		2143.66	
5	184-26-24	90-20-37	653.38	2143.5810
196-30-43	196-30-43		434.53	
8	16-30-44	90-53-02	172.447	434.4801
0-0-15				
355-33-52	355-33-37			

E. C. L. B.
J. FARNUM
5-15-90 40

OTS TO SEC CON

10" RO	N 71 W	26.12
9" RO	N 49 E	26.50
12" RO	S 70 E	31.23

SEC CON
3/4 CAPPED
PIPE



HASS

K@ 9 BS 6

0-0-05
180-0-10 102-27-29
102-27-34
10 282-27-28 102-27-18
00-0-11
257-32-45 257-32-34

K@ 5 BS 6

0-0-11
120-0-26 147-13-32
147-13-43
25 327-13-42 147-13-16 90-5-5 1748.23
0-0-23 532.865 1748.2278
212-46-49 212-46-26

K@ 10 BS 9

60-00-09
180-00-12 148-14-20 92-28-19 715.20
178-14-29 217.993 714.5314
11) 328-14-36 148-14-24 90-44-45 214.11
00-00-26 65.260 214.0897
24-46-08 211-45-42

K@ 11 BS 10

00-00-00
679-59-55 66-30-03
12) 66-30-02 66-30-07
24-46-30-02
00-00-10
293-29-19 293-29-09

K@ 13 BS 16

242-33-10
14) 125-05-34 242-32-47
91-15-44 91-15-49
90-16-58 102.61
91-15-44 31.277 102.6107
27.757 91.0406

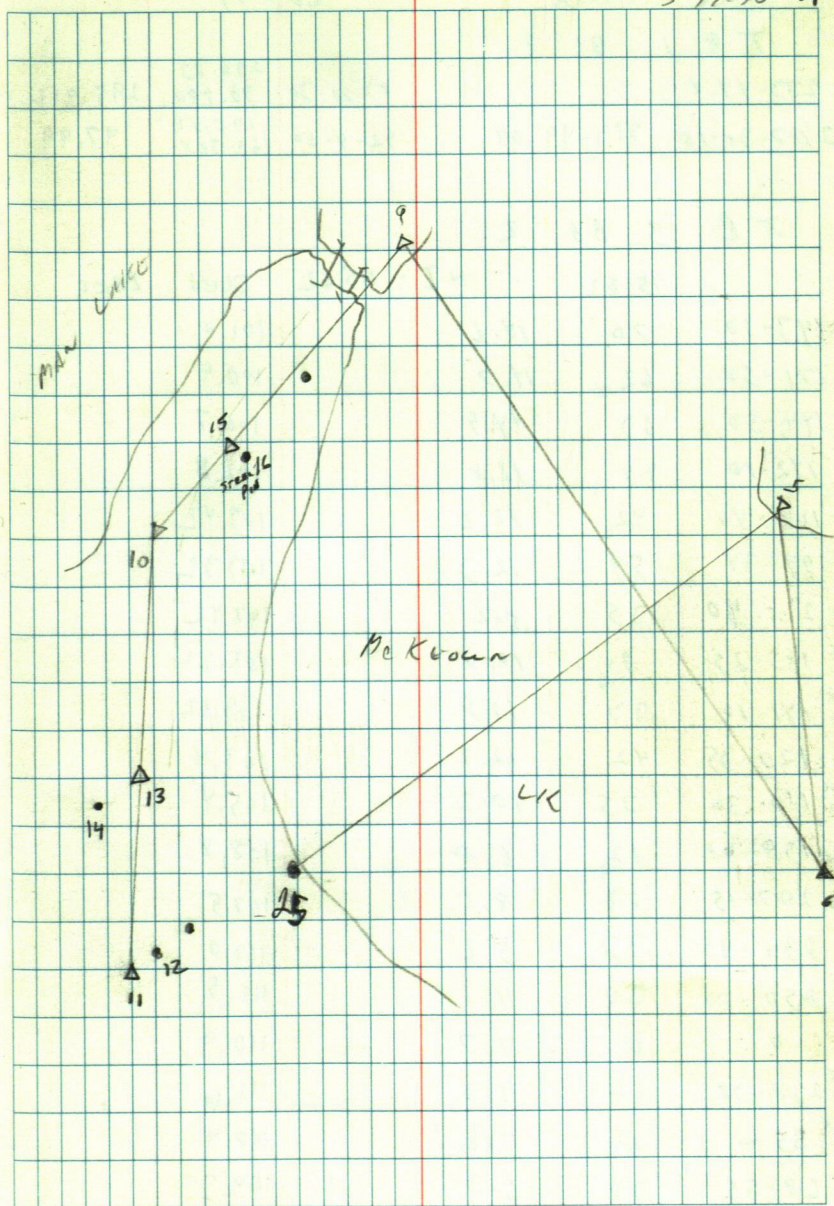
K@ 15 BS 9

91-50-14 520.65
158.693 520.3782
11.30

copy 35°

E. CUNO
D. CARNUM
5-19-96

41



GREG

FUNK

LOT 14

T @ 1 BS 2

273-49.8

87-21-30

296.23

90.290

295.912

3187-38-15

273-49-08

92-4-50

198.12

60.388

197.99

T @ 3 BS 2

15.62

HI = 115.62

ELEV

LAKES

4 143-30

70

14.6

101.0

5 171-50

62

14.7

100.9

6 144-50

60

14.9

100.7

7 142-10

49

12.8

102.8

8 118-40

42

12.2

103.42

9 199-30

54

12.3

103.32

10 215-80

35

8.2

107.42

11 185-25

30

10.4

105.22

12 141-10

33

11.8

103.82

13 120-35

42

12.2

103.4

14 110-30

35

10.2

105.4

15 159-00

12

6.8

108.8

16 207-15

28

8.1

107.5

17 234-45

37

5.6

110.0

18 257-00

30

4.1

111.5

0

0

4.7

110.9

19 298-38

12

4.0

111.6

20 55-

15

5.2

110.4

21 68-55

30

6.3

109.3

22 82

6.33

109.29

BM SPR
IN 20' RD

42

23 41-15	52	4.7	110.9
24 0-0	33	2.3	113.3
35 306-15	45	1.7	113.9
26 103-	72	13.5	102.1
27 78-15	62	9.2	106.4
28 54-12	62	7.7	107.9

X MAS PY

TAUSCH DR. WAY X SEC.

T @ 1 BS 2

3) 53-08-48

4) 200-41-31

BM #5 0.21

TP 5.90

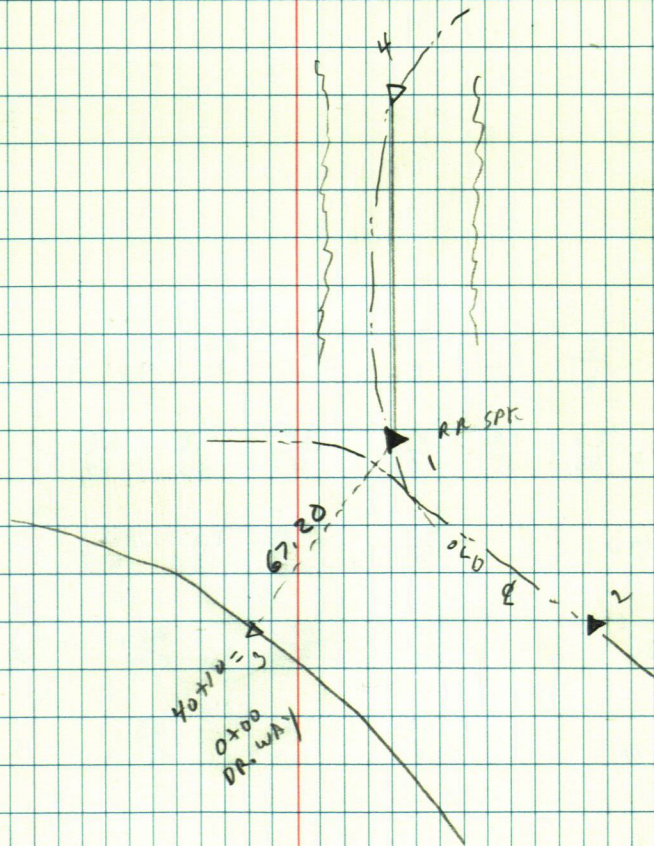
6.71

TPR 70+00
E

0+14

6.7

44



1 + 00

0 + 70

0 + 30

DITCH

0 + 14

TP

6.71

E 40200
TIP XVA

BM #5

0.21

0

45

$\frac{3.9}{50}$	$\frac{3.0}{19}$	$\frac{2.6}{14}$	$\frac{3.0}{0}$	$\frac{2.8}{13}$	$\frac{1.9}{19}$	$\frac{0}{26}$
------------------	------------------	------------------	-----------------	------------------	------------------	----------------

$\frac{5.9}{50}$	$\frac{5.0}{26}$	$\frac{4.8}{0}$	$\frac{4.4}{13}$	$\frac{2.1}{20}$	$\frac{1.5}{50}$
------------------	------------------	-----------------	------------------	------------------	------------------

$\frac{7.9}{50}$	$\frac{6.5}{31}$	$\frac{5.1}{0}$	$\frac{4.9}{0}$
------------------	------------------	-----------------	-----------------

RT

$\frac{7.9}{50}$	$\frac{6.3}{0}$	$\frac{4.8}{50}$
------------------	-----------------	------------------

LT

$\frac{6.0}{50}$	$\frac{6.7}{0}$	$\frac{5.5}{50}$
------------------	-----------------	------------------

HAAS

~~π@9 BS6~~

~~00-00-05~~
~~180-00-10~~
~~102-27-34~~
~~10) 252-27-28~~
~~00-00-11~~
~~257-32-45~~

π@17 BS9

90-18-45 320.54
97.702 320.5361

18) 92-10-41 27.96

19) 158-13-45 53.03

π@20 BS9

329-47-24 } 329-47-22
 21) 299-34-43 } 90-02-15 571.23
 174.112 571.2292
 899.56
 90-03-19 274.186 899.5558

332-28-56 } 332-28-48
 22) 304-57-36 } 90-06-21 825.85
 251.720 825.8465

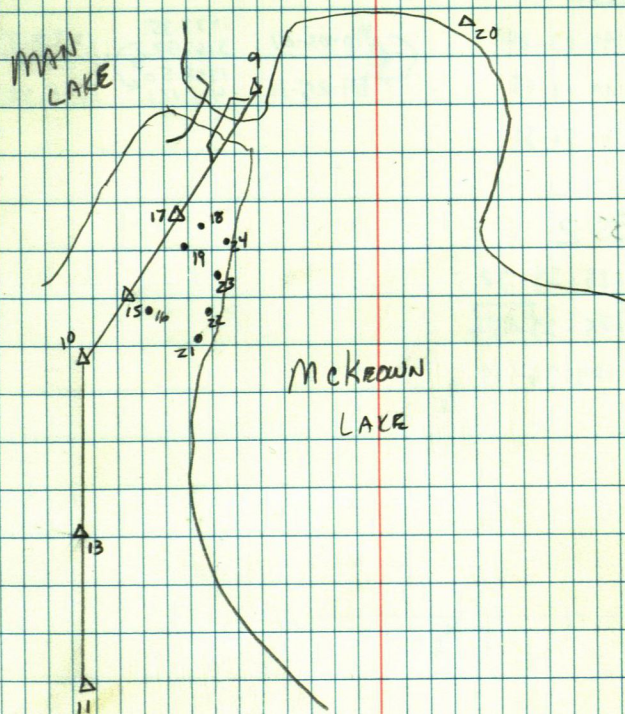
335-26-50 } 335-26-41
 23) 310-53-21 } 90-05-54 775.38
 236.335 775.3741

337-46-50 } 337-46-54
 24) 315-33-47 } 90-01-40 736.33
 224.432 736.3244

π@9 BS20

136-15-11
 10) 272-30-39 136-15-20

MAY 18, 1990 E. CURD - D. FARNHAM 46



SR. CITIZENS

$\pi @ 2$

BS1

00-00-08

180-00-05

199-03-12

3) 19-03-10

00-00-14

160-57-05

199-03-04

199-03-05

166-56-51

90-03-01
89-25-12

1037.35

316.182

1368.50

417.121

1037,341

1368,425

$\pi @ 3$

BS 2

00-00-08

180-00-08

185-23-38

4) 05-23-40

00-00-31

174-36-50

185-23-30

185-23-32

174-36-19

47

1/4

1

FREE
WATER

2

3

4

CECIL USTLER

T@18	BS 19			
00-00-21			1010.84	
180-00-30	1-53-47	89-59-20	308.104	1010.876
01-54-08			194.93	
2) 181-54-23	1-53-53	90-32-24	59.415	194.921
132-53-55	132-53-34		167.04	
2) 312-54-03	132-53-33	91-50-48	50.912	166.949
0-0-12				
227-06-22	227-06-20			

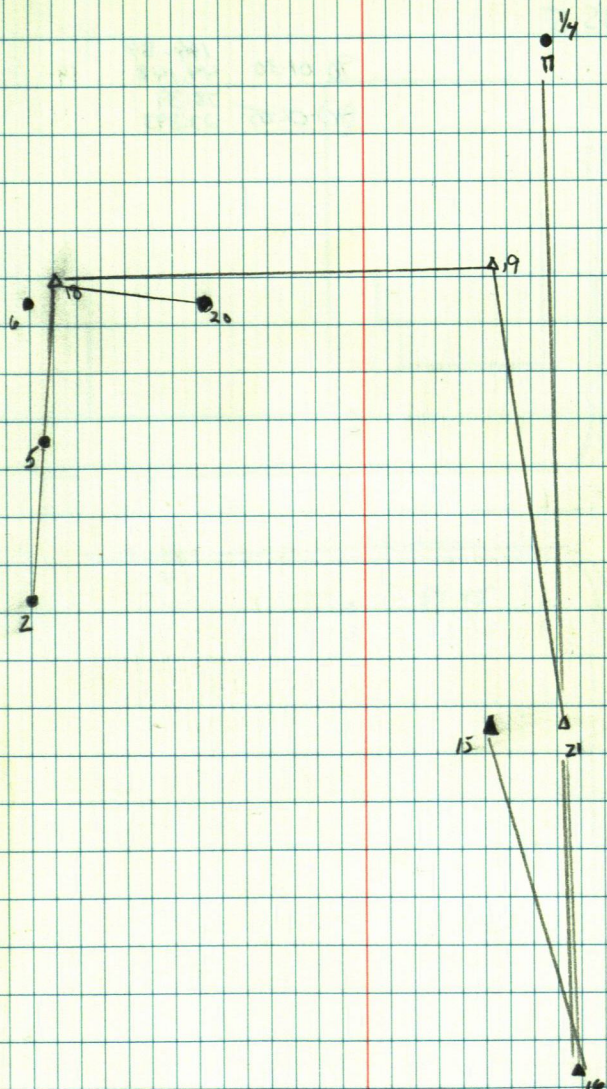
T@19	BS 18			
00-00-17				
180-00-13	265-03-16			
265-03-33				
2) 85-03-37	265-03-24			
00-00-16				
94-56-48	94-56-32			

T@21	BS 16			
00-00-11			776.69	
180-0-18	174-33-53	90-14-04	226.234	776.678
174-34-04			591.82	
19) 254-34-06	174-33-48	91-00-40	180.349	591.729
0-0-3				
185-26-10	185-26-07			

T@16	BS 15			
00-00-05				
180-00-29	3-37-04			
03-37-09				
17) 183-37-30	3-37-01			
03-43-58	3-43-57			
21) 183-44-10	3-43-41			
00-00-03				
356-16-27	356-16-24			

MAY 23, 1990 E. CURRO-D. FARRMAN - G. MARTIN

48



DICK GAROUTTE

103 BS 5

90-58-49

2) 181-57-39

90-01-30	144-84 44,148
90-02-05	78.39 23,893

90-01-30

90-02-05

144-84

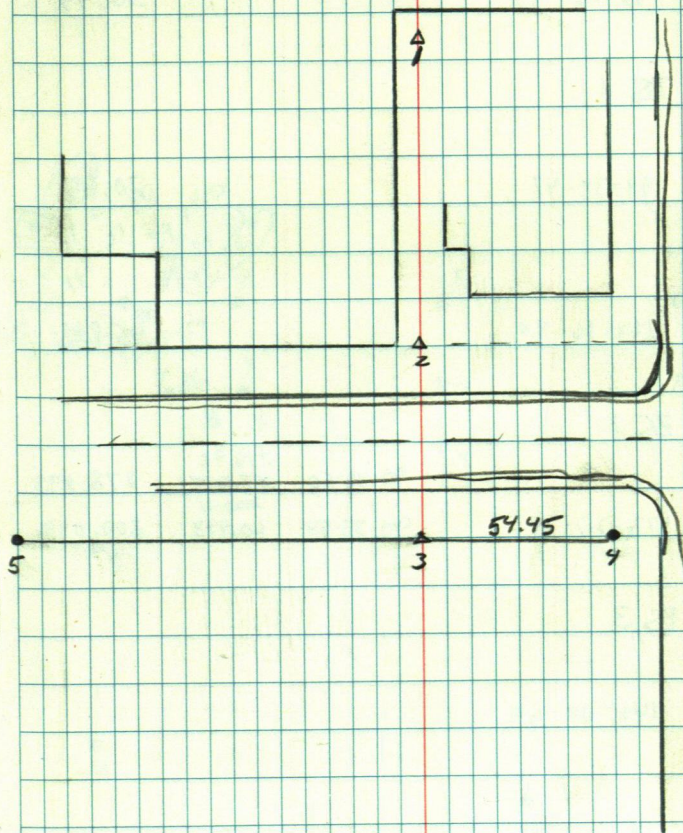
44,148

78.39

23.893

MAY 23, 1990 D. FARHAM - G. MARTIN

49



MIKE ORTH - BOWEN LAKE

101 BS 3

86-06-55

2) 172-13-46 86-06-53

56.44

103 BS 1

98-34-13

4) 197-09-33 98-34-47

20.65

269-16-41

5) 178-33-21 269-16-40

45.62

103 BS 1

173-23-26

90-45-50

278.92

85.015

278.893

6) 346-46-27 173-23-14

90-33-58

200.11

60.993

200.099

106 BS 3

140-00-21

8) 280-00-58 140-00-29

276-07-07

7) 192-14-34 276-07-17

65.86

108 BS 6

137-07-46

85-36-40

301.72

91.965

300.835

9) 274-15-28 137-07-44

92-13-42

142.75

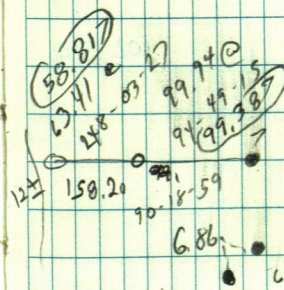
43.509

142.64

MAY 24, 1990

E. C. URO - D. FARNAM - G. MARTIN

50



5

2

3

1

4

8

9

10

11

$\pi @ 9$ BS 8

78-27-06

10) 156-5406

78-27-07

90-19-28

204.02
62.185

204.015

$\pi @ 10$ BS9

181-47-46

11) 03-35-24

181-47-42

102.52

PHIL LARUE

π@3 05 2

136-53-31

4 373-46-46 136-53-23

π@ 4 05 3

173-54-04

90-32-03

212.55

64.788

212.544

314.68

5 347-47-44

173-53-54

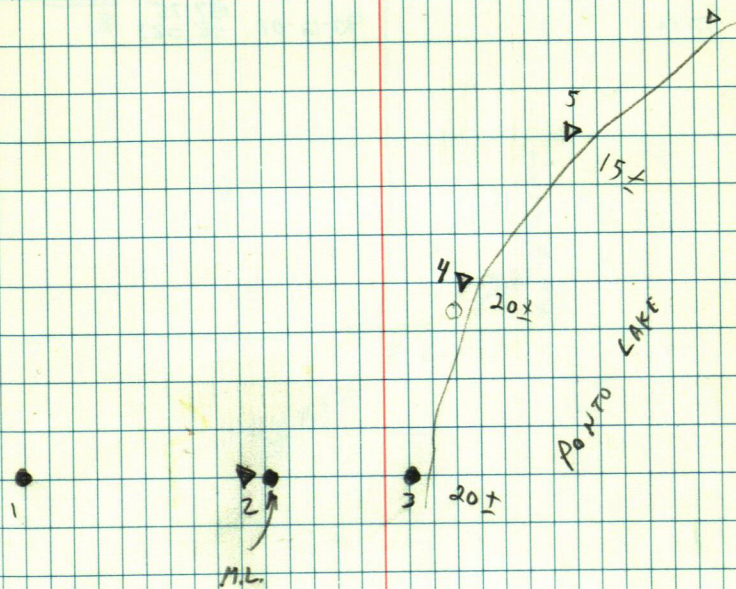
90-22-12

95.914

314.671

52

MAY 24, 1990 W. CURRO - D. FARNHAM - G. MARTIN



MAPLE LANDFILL

T@2 BS 1

SKETCH #1

322-51-50

3 285-13-39

322-51-

89-44-12

207.99

63.397

T@5 BS 3

SKETCH #2

378-54-51

8) 337-47-42

90-12-01

157.75

48.083

53

MAY 27, 1990 E. CORD - D. FARNAM - G. MARTIN

SKETCH #1

PK MAIL
3

SILCO
3

6

1
X
X
X
GATEWAY
8

SKETCH #2

1/4 5

FLOYD ROBERT

LONG BOW

NO3 BSI

199-33-56

89-22-17

292.15

89.048

292.132

360
9) 39-07-29 199-33-45

92-12-48

168.70

51.418

168.571

TC 4 BS 3

5 112-33-31

54

5 Δ 75 \pm

Δ 75 \pm

3 Δ

AND

126 \times

2

SR. CITIZENS

T@3 BS1

4) 78-13-05

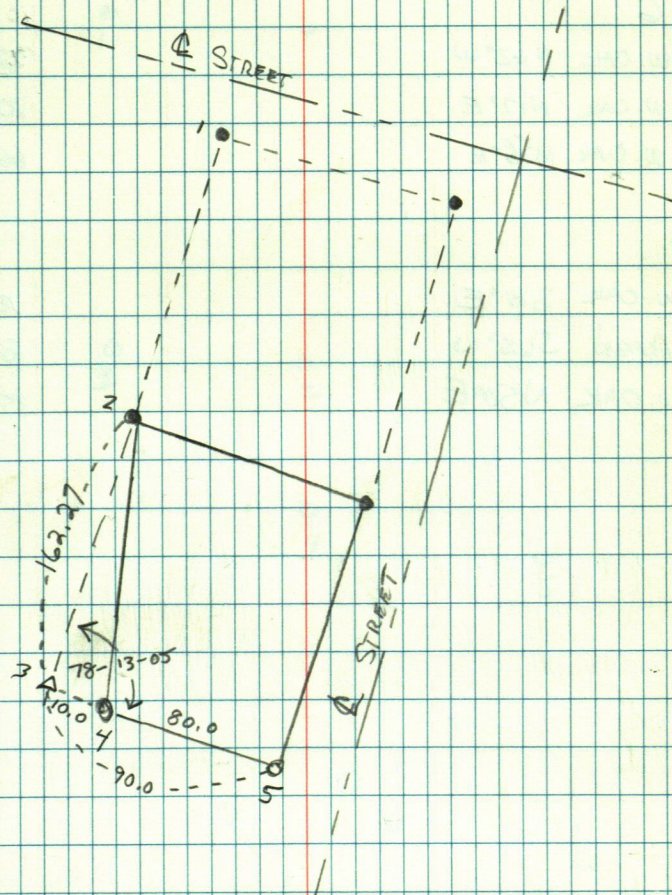
10.0

5)

90.00

MAY 30, 1990 D. FARUHM - G. MARTIN

55



Jim Adams

CORNER TIES (CONT. FROM Pg 21)

#6

12" W. OAK N 62° W 72.78

16" W. OAK N 17° E 70.31

5" W. OAK N 56° E 66.41

#7

5" W. OAK S 15° E 18.41

14" ASPEN S 65° W 8.32

7" W. OAK N 50° E 15.92

56

1

3

2

4

5

6

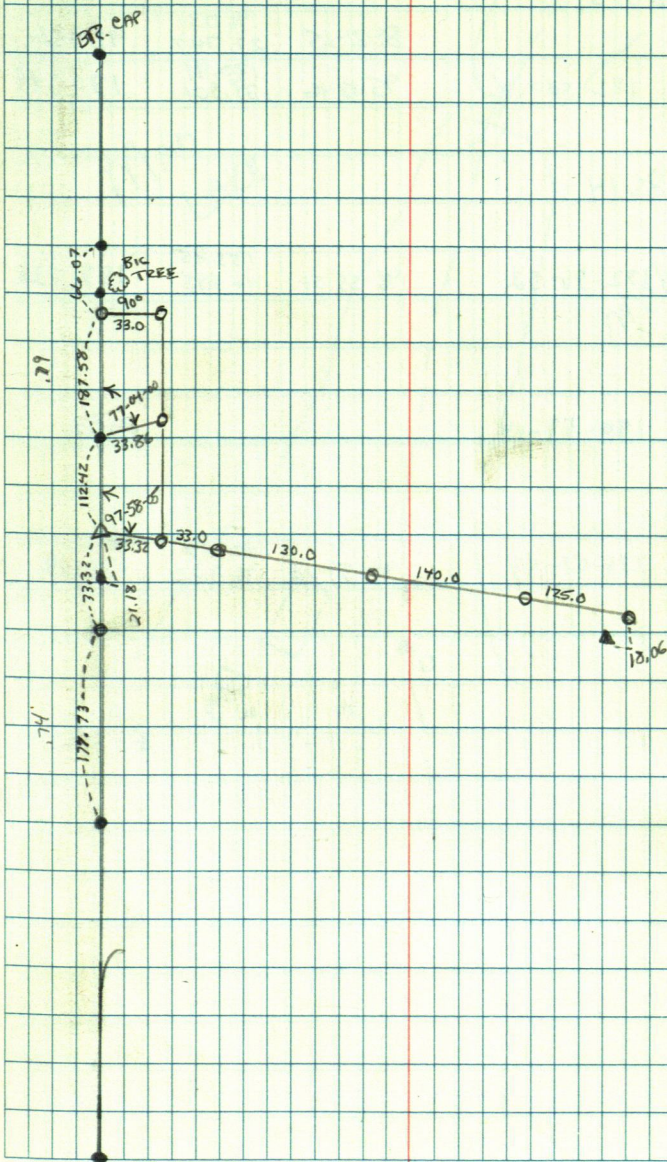
7

ARLAND BENSON

MAY 31 1990

D. FARNAM - G. MARTIN

57



Bill HAAS

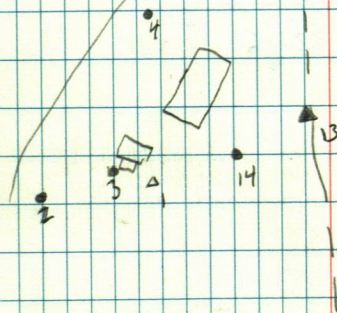
T@14 BS13				
182-50-22		89-21-25	91.03 27.747	91.026
1) 05-40-32	182-50-16	95-18-16	130.91 39.901	130.348
T@1 BS14				
182-57-00			153.85	
2) 05-53-43	152-56-52	96-55-51	46.895	152.728
190-53-32				
3) 21-46-27	190-53-14			36.93
275-07-39				
275-07-42				
4) 190-15-26	275-07-43	97-59-18	121.27 36.962	120.09
190-17-20				

JUNE 1, 1990 D. FARNAM-G. MARTIN

58

MAN
LAKE

MCKEOWN
LAKE



ARLAND BENSON

π@36	BS 37
------	-------

51) 175-29-52 TREE ON LINE - DEFLECTION TO PT. # 56 67.84

56) 186-39-16					67.84
---------------	--	--	--	--	-------

$\pi @ 56$	BS 36
------------	-------

$$51 \overline{) 84.25-18}$$

$$78 \underline{50} 36$$

$$13.13$$

$\pi \odot 56$ BS 36

57) 168-50-36					67.84
---------------	--	--	--	--	-------

OFFSET From 57 to 58 = .44

DIST FROM 58 TO 52 = 32.16

$\pi @ 52$ BS 51

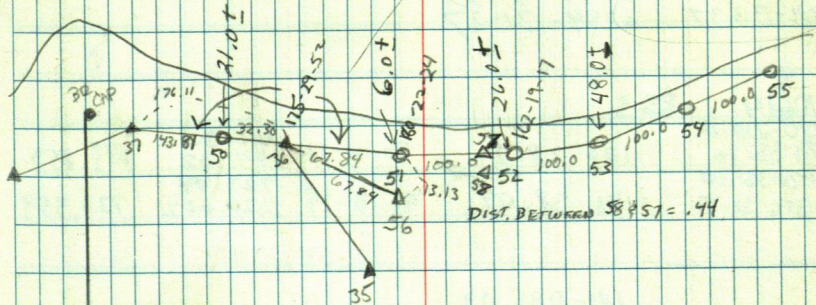
53) 162-19-17

AE53 BS52

54)

JUNE 1, 1990 D. FARNAM - G. MARTIN 59

Big Boy Game



MIKE QUINN

$\pi 0$ 2 BS 3
 0-4-53 265-19-35 90-8-33 2890.74 2890.7223
 180-4-53 265-19-35 90-8-33 2890.7223
 265-24-28 92-36-05 324.81
 185-24-40 265-19-47 90-8-33 99.002 324.474
 0-0-41 94-40-19
 94-41

0-0-07 70-12-05
 180-0-10
 70-12-12 70-12-01
 251-12-11 249-31-33
 249-31-40 249-31-27
 249-31-37

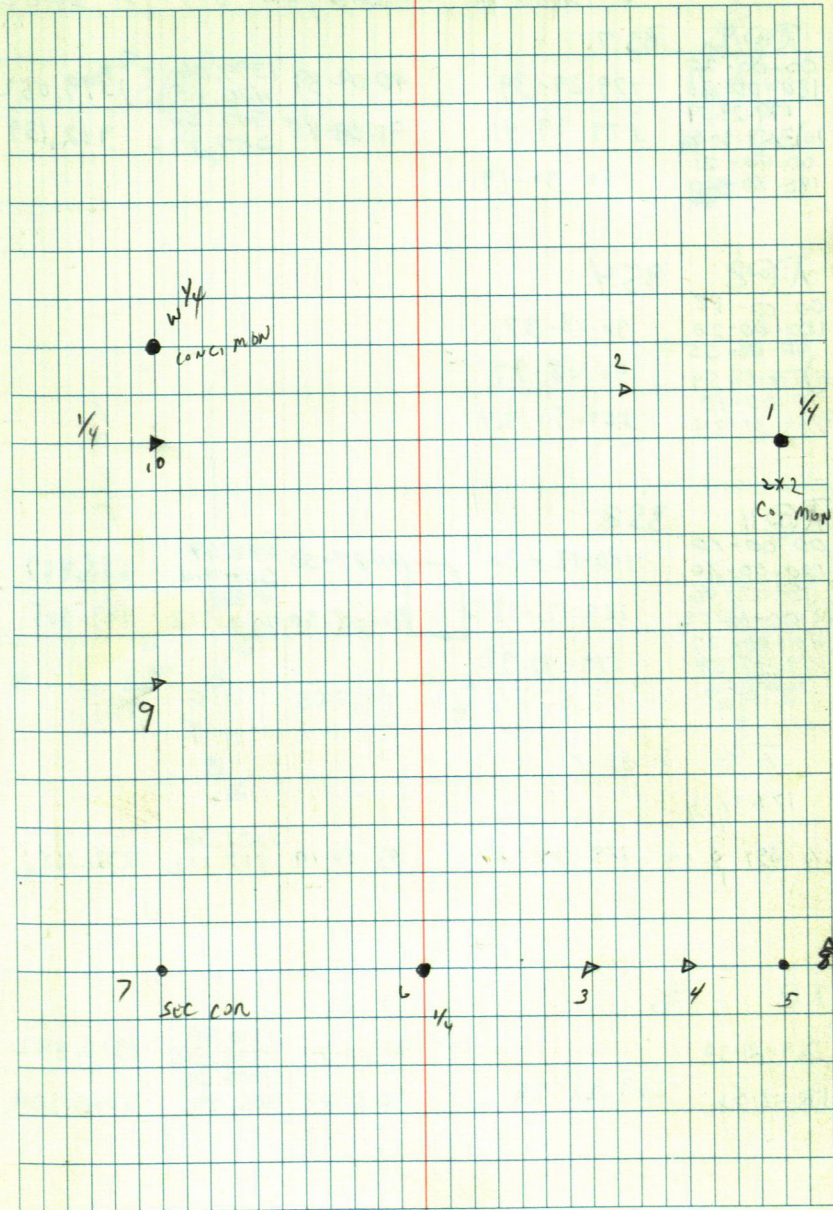
$\pi 04$ BS 3
 00-00-09 176-38-21 90-01-11 613.86 613.853
 180-00-30 176-38-30 91-18-14 723.74 723.559
 176-38-30 220.602
 2) 356-38-39

181-08-09
 181-08-18 181-07-58 90-59-25 660.83 660.734
 5) 01-08-28 201.421

$\pi 06$ BS 3
 00-00-38 180-15-05 89-34-50 1363.37 1363.38
 180-00-46 180-15-17 90-02-06 415.552 2558.75
 180-15-43 779.911 2558.744
 1) 00-16-03 179-44-44
 00-00-11
 179-44-55

$\pi 07$ BS 6
 00-00-10 270-02-16
 179-59-56 270-02-29
 270-02-26 89-57-31
 10-02-25
 00-00-06
 89-57-37

60



MIKE QUINN

TR9	BS7			
00-00-20		90-09-39	1399.06	1399.052
180-00-20	179-29-39		426.436	
179-29-59		91-08-45	942.36	942.159
10359-30-01	179-29-41		287.226	
00-00-21				
180-30-40	180-30-19			

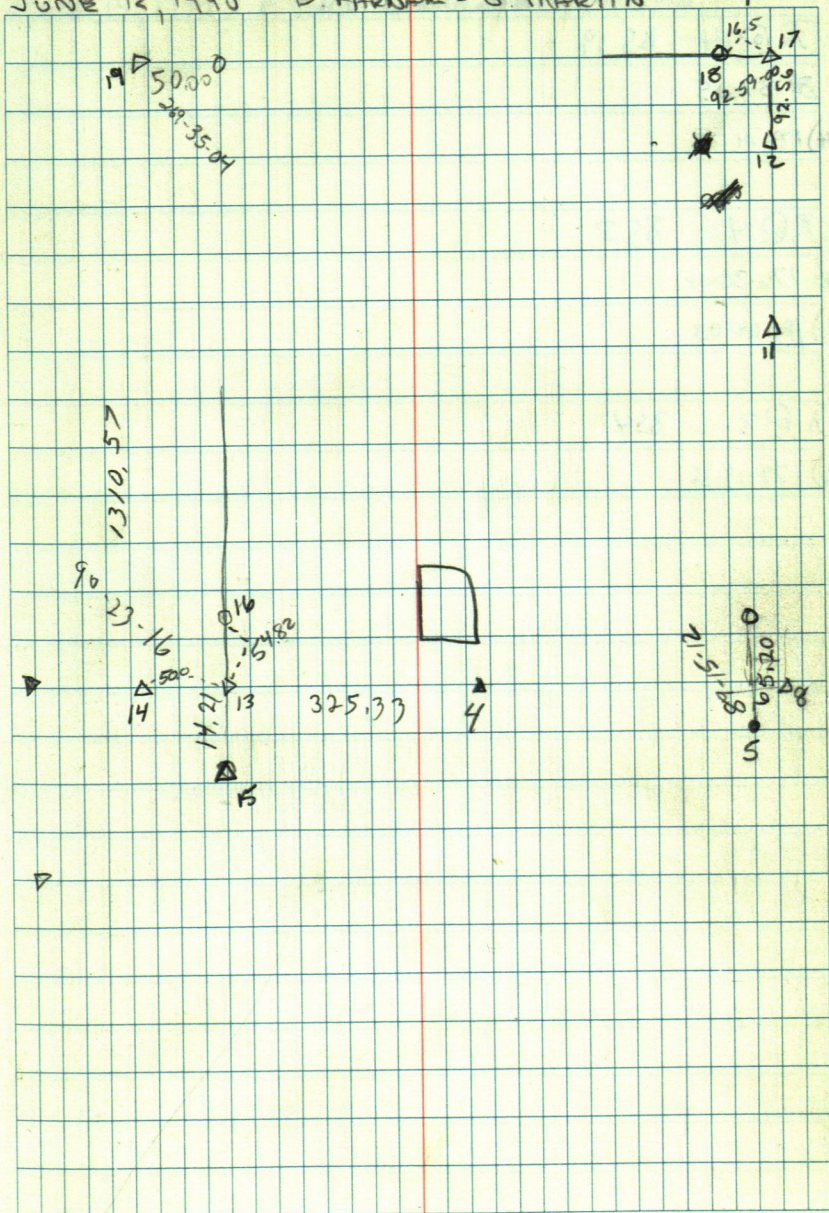
TR8	BS4			
00-00-18				
180-00-20	90-08-37			
90-08-55				
11270-08-54	90-08-34			
00-00-10				
269-51-34	269-51-24			

TR11	BS8			
00-00-16		91-27-50	688.69	688.463
180-00-20	180-12-30		209.914	
180-12-46			493.81	
1200-12-52	180-12-32	90-05-30	150.512	493.805
00-00-27				
179-47-59	179-47-32			

TR	9 BS7			
179-34-31				
W/4 354-8-53	179-34-27	90-50-19	1272.30 387.801	1272.164

TR	BS			
269-21-30		90-14-27	1310.91 399.565	1310.892
178-42-56	269-21-28	90-34-27	1003.26 305.796	1003.209

JUNE 12, 1990 D. FARNAM - G. MARTIN 61



MIKE QUINN

AE14 BS19

8) 37-25

4) 179-14-21

AE4 BS3

8) 176-38-04

5) 181-08-03

AE3 BS4

6) 179-19-36

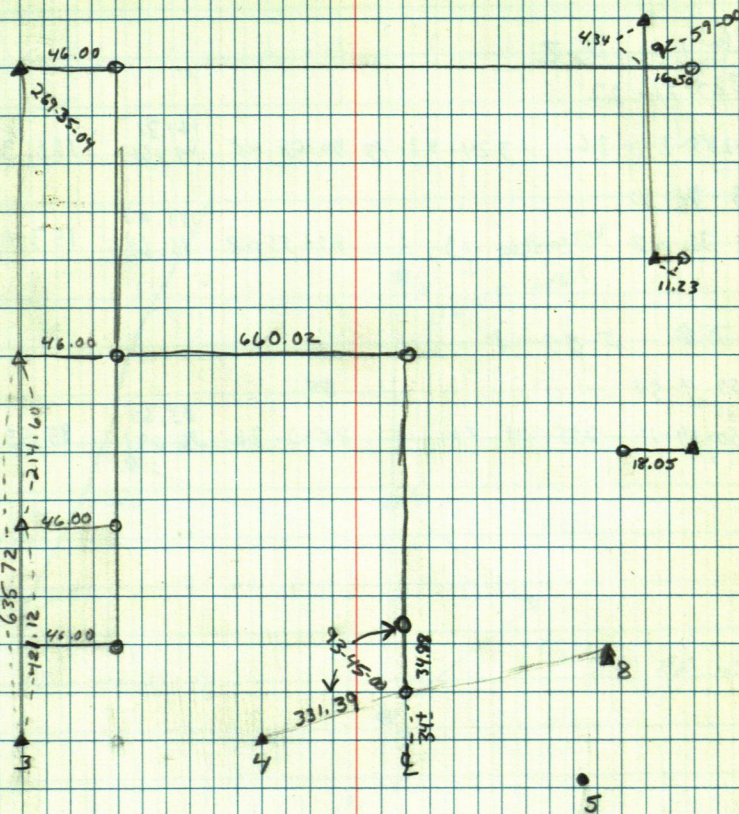
62

JUNE 14, 1990 E. Curo - D. FARNAM - G. MARTIN

MIKE QUINN

JUNE 18, 1990 D. FARNHAM G. MARTIN

63



CECIL UTSLAR

NO 1 BS 2

324-42-22

3) 189-24-26 324-42-13 90-08-45 161.31
49.166 161.307

3-46-20

57-32-28 3-46-13 89-55-48 153.03
46.645 153.032

NO 5 BS 1

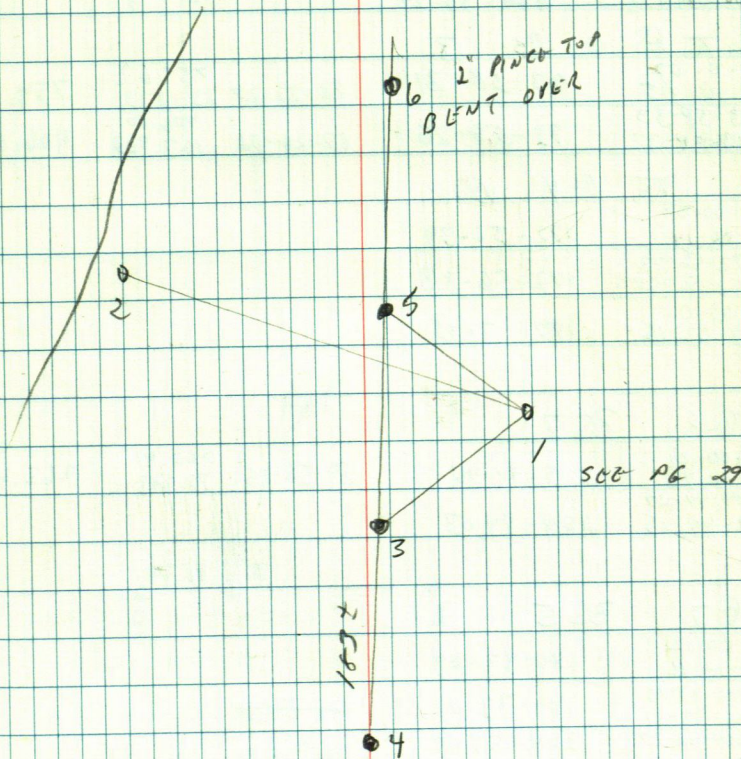
255-9-51

81

6 150-19-11 255-09-40 88-2-36 85.60
510 26.091 85.55

E. CURT
G. MARTIN
D. FARNUM C. 19-90

64



KELLY

A @ 5 BS 4

0-0-20			887.80	
180-0-27	45-48-17	90-7-35	270.602	887.794
95-48-37			227.85	
2 225-48-45	95-48-18	89-46-53	69.450	227.85
156-53-37			292.98	
7 376-53-43	156-53-17	90-23-32	89.300	292.971
260-35-44				
8 80-35-47	260-35-24			
	260-35-20			

A @ 2 BS 3

0-0-02			759.62	
180-0-05	93-58-31	86-22-27	231.533	759.312
93-58-33			406.50	
4 273-58-33	93-58-28	87-26-26	123.903	406.106

A @ 4 BS 2

00-00-09				
180-00-14	172-56-39			
172-56-48				
5 352-56-52	172-56-38			
00-00-10				
187-03-25	187-3-15			

A @ 8 BS 7

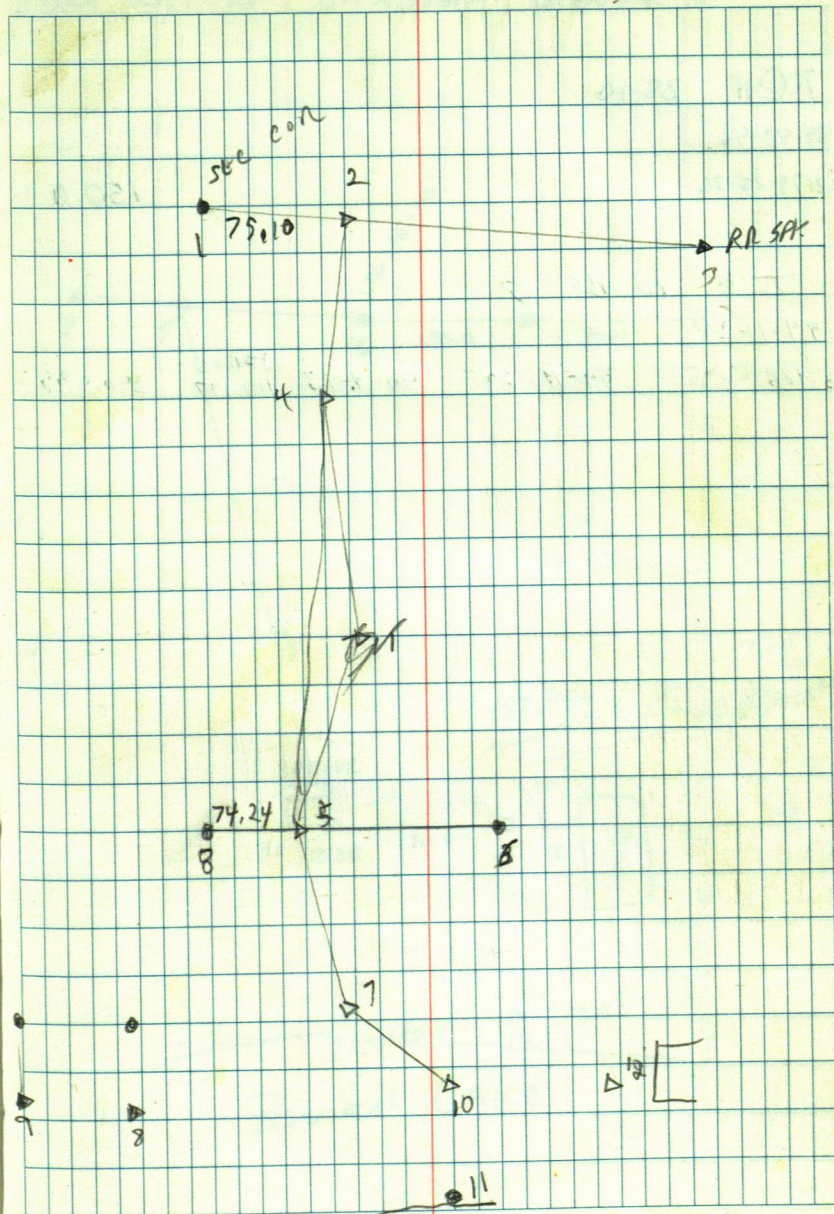
00-00-21			262.41	
180-00-22	209-44-06	89-58-25	79.983	262.41
209-44-27				
9 209-44-25	209-44-03			

A @ 7 BS 5

00-00-12				
180-00-16	180-33-03			
180-33-15				
10 00-33-17	180-33-01	92-58-54		
264-52-27				
8 84-52-28	264-52-15	90-22-54		
	264-52-12			

A @ 10 BS 7

00-00-13			213.74	
180-0-15	116-53-40	87-26-48	65.147	213.525
116-53-53			150.65	
12 296-53-50	116-53-35	90-17-29	45.919	150.649
11 198-33-57	148-33-44	97-42-41	125.12	
18-33-56	148-33-41		38.138	123.990



PAUL KELLY

१७११ ३९ १०

89-42-46

13179-25-36

150.0

$\pi @ 10. BS \quad 7$

94-11-28

26	188-22-58	94-11-29	90-4-43	391.00 119.177	390.998
----	-----------	----------	---------	-------------------	---------

94-11-29

90-4-43

391.00

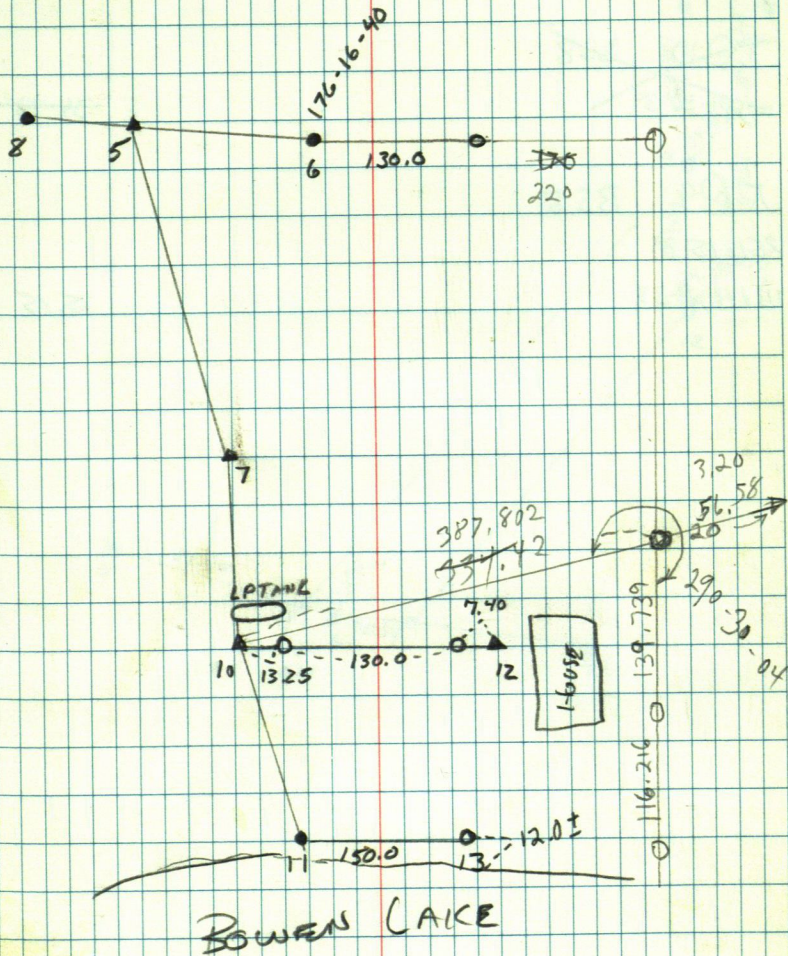
119.177

390.998

JUNE 20, 1990

JUNE 20, 1990 D. FARNHAM - G. MARTIN

64



PHIL LARUE

~~7~~ ~~π@9~~ ~~B58~~

~~89~~ ~~11) 71-05-34~~

~~34.88~~

~~131~~ ~~π@10~~ ~~B58~~

~~12) 11-32-39~~

~~34.79~~

20 π@9 B58

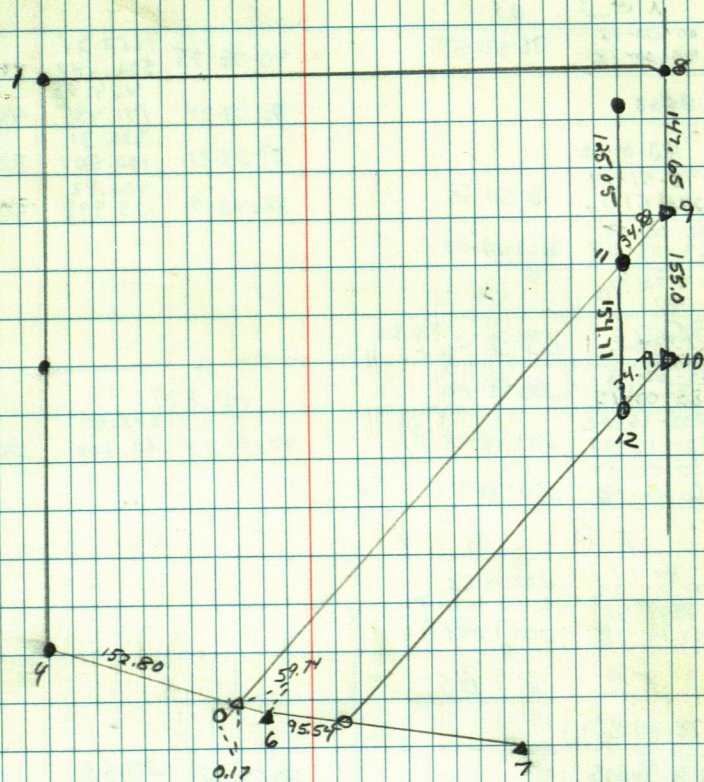
251-15-39

11) 142-29-33

35.15

JUNE 20, 1990 D. FARNHAM - G. MARTIN

67



RICHARD ROGERS

T@3 BS 1				
1	00-00-15 180-00-18	96-50-59	90-08-05	1662.21 506.642 1662.1987
2	0000		90-32-34	464.02 141.435 463.9999
5	180-00-00		89-24-21	336.31 102.507 336.2900
4	96-51-14 276-51-16	96-50-58	88-43-00	406.82 123.998 406.7150
	00-00-04 263-09-08	263-09-04		

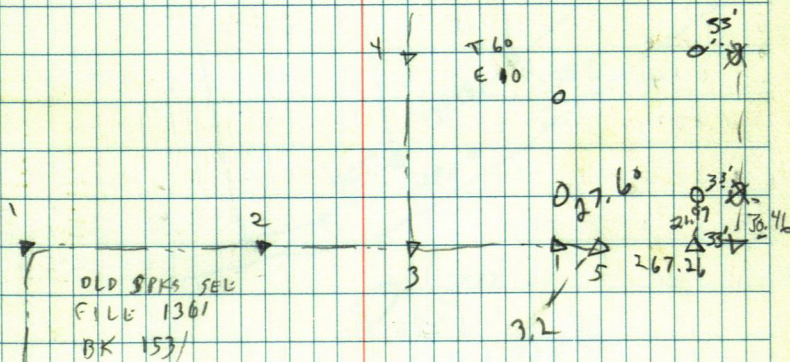
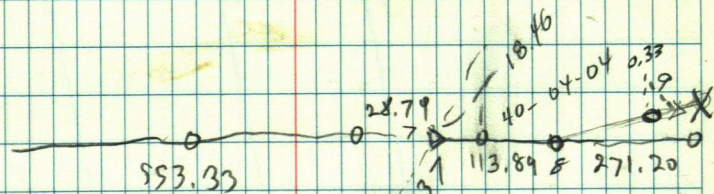
T@4 BS3				
	00-00-18 180-00-15	203-15-44		
	203-16-02		90-0-23	208.64 62.594 208.6399
6	23-16-03	203-15-48		
	00-00-07 156-44-18	156-44-11		

T@ 6 BS 4				
	0-0-14 180-0-22	200-14-23		
	200-14-41			
7	20-14-38	200-14-16		

T@ 8 BS 7				
	179-10-59			
	9358-22-06	80-59-14	241.63 73.649	238.6459 238.33 .316

68

JUNE 21, 1990 E.CUR. - D. FARNHAM - G. MARTIN

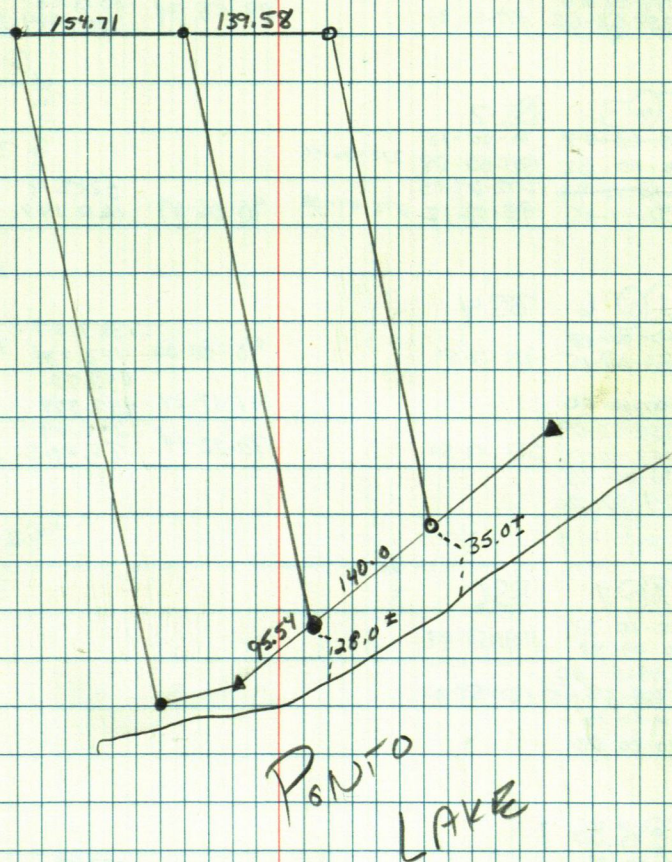


OLD SPEKS SEL
FILE 1361
BK 153/

PHIL CARUE

JUNE 22, 1990 D. FARNAM - G. MARTIN

69



CLARENCE PETERSON

T@9 BS 8
 00-00-07
 180-00-14 113-17-45
 112-17-52
 10) 293-17-54 113-17-40
 00-00-18
 246-42-41

T@10 BS 11
 00-00-15
 180-00-25 150-44-59
 150-45-14 150-45-07
 9) 330-45-32
 00-00-02
 207-15-00

92-49-43	275.45	
	83.958	275.1146
87-55-23	178.44	
	54.387	178.3195

T@11 BS 10
 00-00-12
 180-00-05 216-39-50
 216-40-02
 12) 36-40-02 216-39-57
 00-00-12
 143-20-10

92-42-02	284.34	
	86.669	284.0265

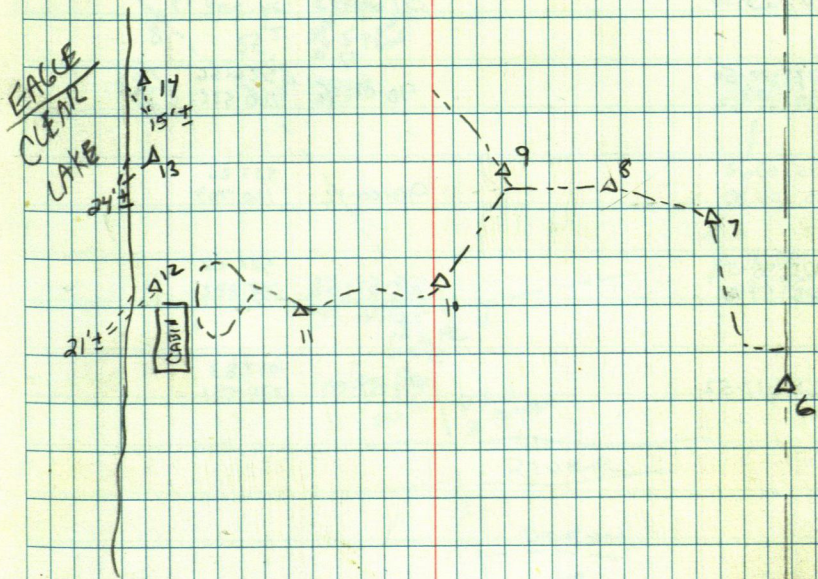
T@12 BS 11
 00-00-22
 180-00-30 275-24-04
 275-24-26
 13) 95-24-40 275-24-10
 01-00-16
 87-36-02

91-08-49	169.21	
	51.575	169.175

T@13 BS 12
 00-00-22
 180-00-44 168-48-22
 168-48-24
 4) 348-46-38 168-47-54
 90-28-03

	95.62	
	29.146	95.619

JUNE 25, 1990 D. FARNAH - G. MARTIN

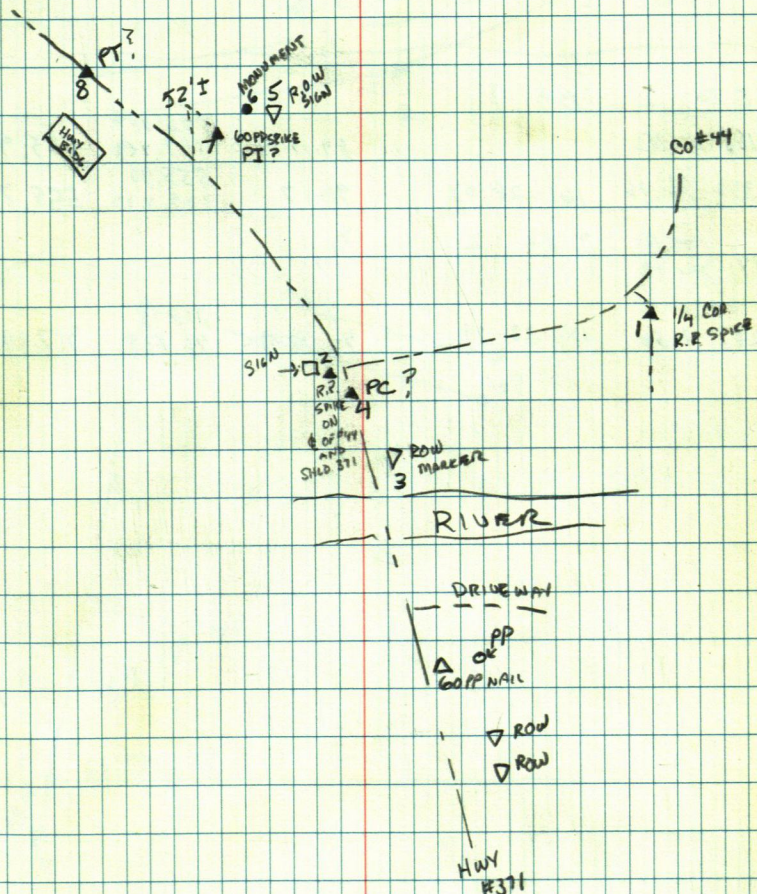


WINSON JUNCTION

102 BS1

60-58-46	88-37-19	1131.51 344.878
3) 121-57-06	90-58-57	210.66 64.210
4) 61-25-30	89-26-43	79.43 24.202
5) 275-22-50 190-45-22	90-02-25	526.66 160.526
6) 275-09-18 170-18-39	90-00-12	527.26 160.709
7) 272-55-54 185-51-18	89-59-58	521.28 158.882
8) 261-17-52	89-39-00	1097.83 334.591

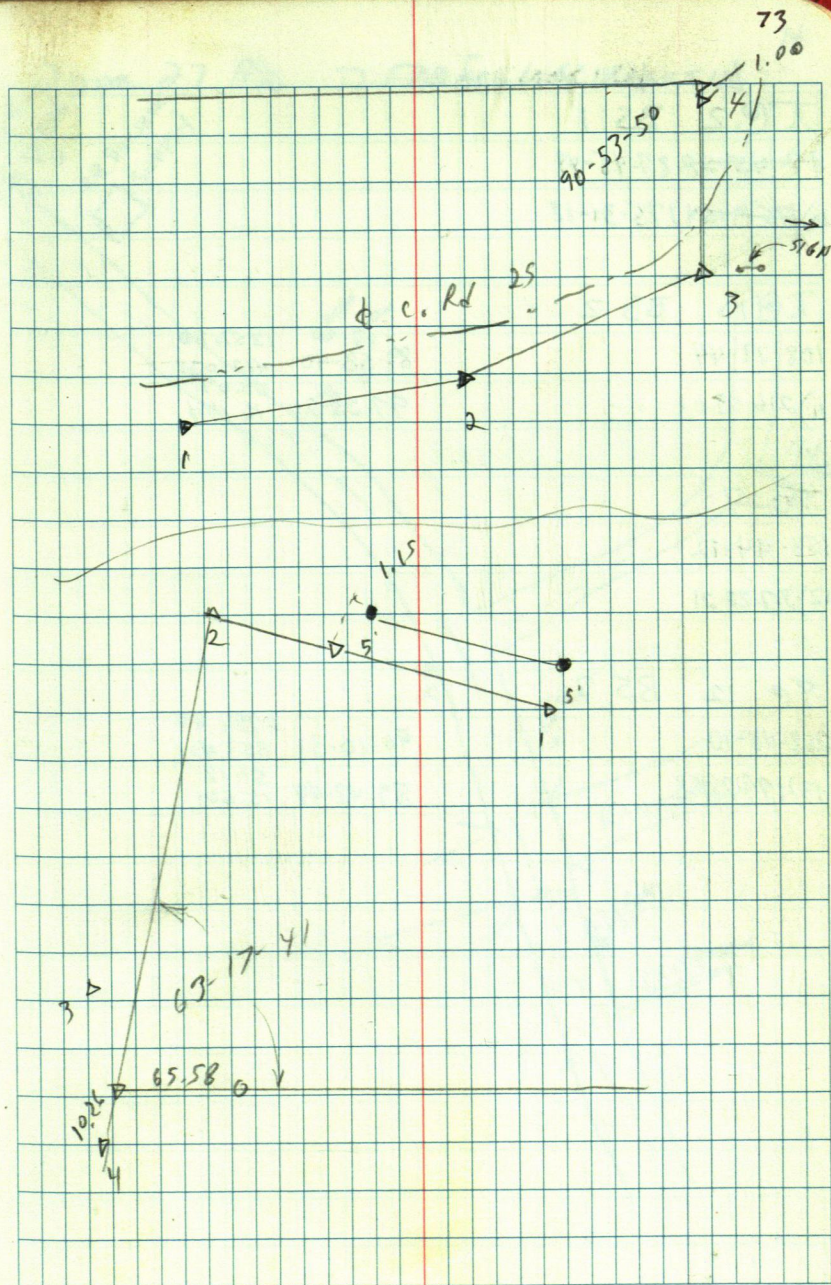
JUNE 25, 1990 D FARNAN - G. MARTIN



HARRY PETERSON

TP	2	BS	1
96-10-18			
③ 192-26-36	96-10-18		
TP	2	BS	4
2-16-06			
④ 72-06	2-16-03	90-00	345.53 105.319 345.531

TP	2	BS	1
161-28-03			
89-14-06			
3 392-56-06	161-28-03	91-17	556.04 169.481 555.988 555.90 169.439 555.759
TP	3	BS	2
141-32-17			
4 283-4-58	141-32-29	90-28-30	317.15 96.669 317.141



Wilson Jet

TC 2 BS 1

87-45-58 87-45-49

10) 175-31-18

TC 10 BS 2

108-29-44

89-58-40

1351.80

412.031

53.07

11) 216-59-03

97-53-20

16.174

TC 7

158-44-12

12) 317-28-21

TC 12 BS 7

268-43-10

90-10-31

2799.88

853.401

51.18

13) 177-25-58

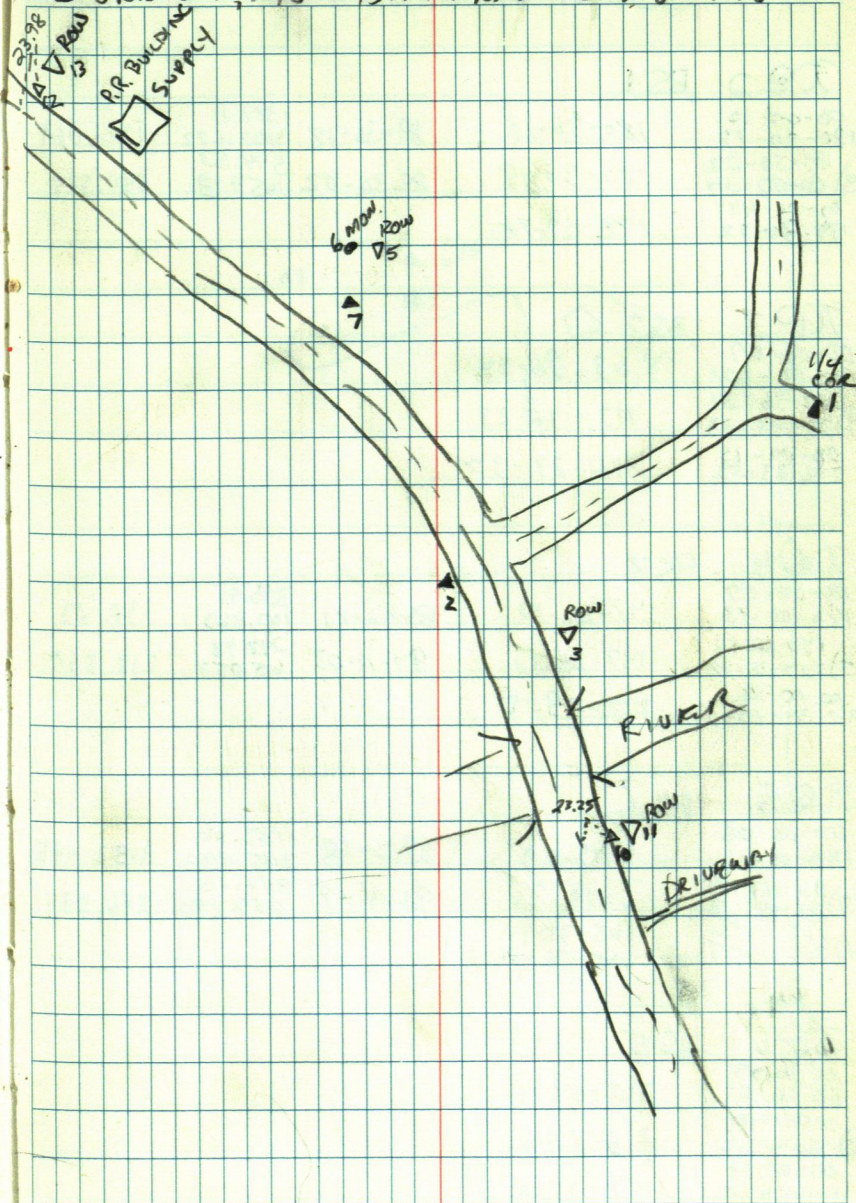
89-42-48

15.601

74

JUNE 27, 1970

D. FARNHAM - G. MARTIN



GERALD KUEHL

Te 2 BS 1

00-00-10	180-30-12	89-36-18	1321.11	1321.069
180-00-16			402.672	
180-30-22	180-30-18	89-36-02	544.53	544.514
3) 00-30-34			165.973	
00-00-44	179-29-48			
179-30-52				

$\pi @ 3$ BS2

00-00-07	113-36-24
180-00-10	
113-36-31	113-36-23
4) 293-36-33	
00-00-15	246-23-37
246-23-52	

πD4 BS3

00-00-07	147-26-10	28-46-21	330.91	330.83
180-00-13			100.860	
197-26-17	147-26-10	94-11-03	213.43	212.859
5) 327-26-22			65.053	
00-00-21	212-39-54			
212-34-15				

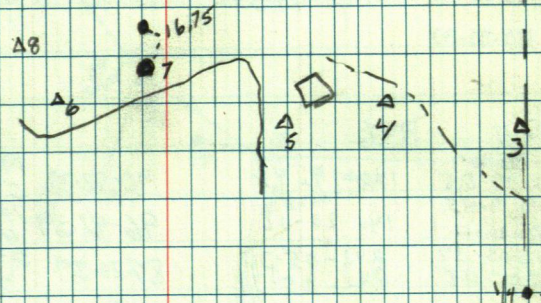
$\pi @ 5$ BS 6

00-00-08			1133.50	
180-00-11	6-49-23	89-26-48	345.493	1133.445
7) 06-45-31	6-49-21	90-14-17	846.10	
1) 186-45-32			257.890	846.087
165-31-51	165-31-44			
4) 345-31-57	165-31-46			

706 BS 5

00-00-09	
180-00-01	215-14-10
215-14-19	
2) 35-14-12	215-14-11
00-00-16	
144-46-01	144-45-8

JUNE 28, 1990 D. FARNAM - G. MARTIN



GERALD KUEHL

T@8 BS6

00-00-21	80-54-36	92-18-56	118.39	
180-00-23			36.084	118.291
80-54-57			71.89	
9) 260-55-11	80-54-48	104-56-41	21.910	69.454
143-50-11	143-49-50		116.61	
10) 323-50-18	143-49-55	99-05-48	35.543	115.143
11) 180-00-00				

T@11 BS6

00-00-07			196.05	
180-00-05	140-19-48	90-32-39	59.757	196.042
140-19-55			147.02	
12) 320-20-11	140-20-06	96-42-39	44.814	146.016
242-05-37	242-05-30	87-21-27	243.53	
13) 620-05-48	242-05-38		74.142	242.989

T@13 BS11

00-00-20	86-35-41			
180-00-31				
86-36-01			89.57	
14) 266-36-10	86-35-39	86-32-14	27.303	89.41
92-53-04				
15) 279-53-03	92-52-44			
279-27-03	92-52-32			
16) 99-27-10	279-26-43	89-09-50	241.69	241.664
287-54-32	279-26-39		73.668	
17) 107-54-33	287-54-12		114.61	
325-18-32	287-54-02	84-50-35	34.933	114.145
10) 45-18-11	325-18-12			
	325-17-40			22.07

T@15 BS13

00-00-01			217.59	
180-00-17	103-32-32	94-37-19	66.322	216.882
103-32-33			157.86	
19) 263-32-46	103-32-29	101-24-30	48.116	154.741
220-29-23	220-29-24		221.09	
20) 40-29-25	220-29-08	90-58-16	67.388	221.057

T@15 BS13

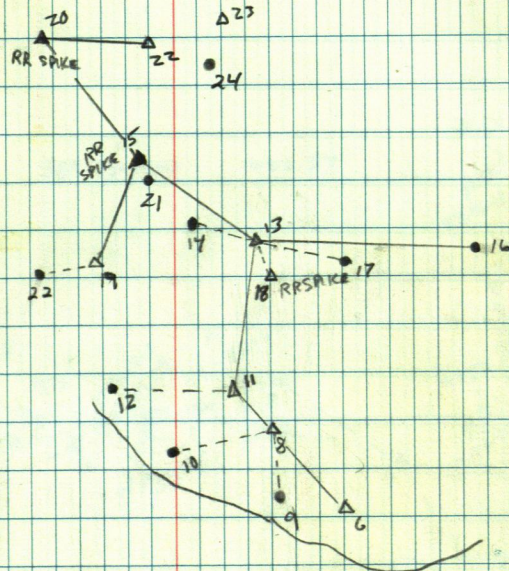
00-00-02	7-45-56			
180-00-18				
21) 07-45-59	7-46-52	96-57-18	28.23	
187-46-07			8.604	28.02

76

JULY 2, 1990 D. FARNAM - G. MARTIN

T@ M BS Z1 VERT DIST

00-00-38			225-55-44		
180-00-47					
225-56-14					
22) 45-56-33	225-55-46	103-40-12	56.73	55.122	
			17.291		



T@20 BS15

00-00-18			315-45-47	
180-00-18				
315-46-05				
22) 135-46-05	315-45-47			

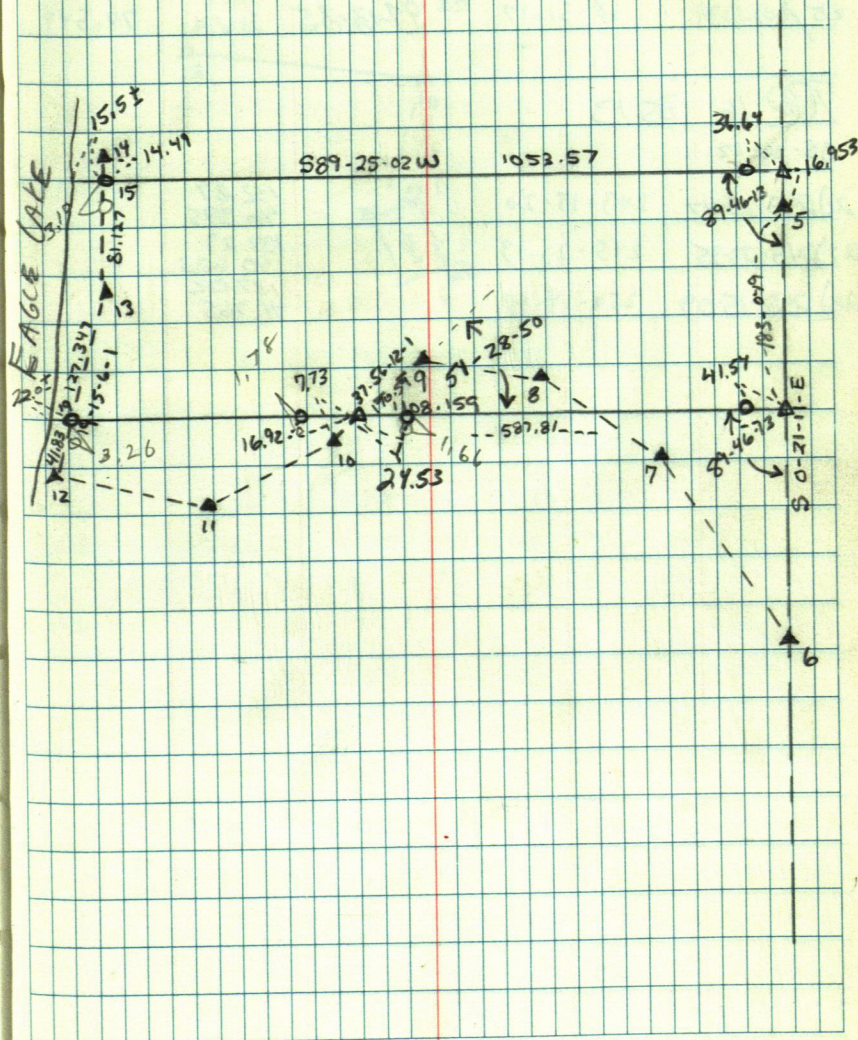
T@22 BS20

00-00-10					
180-00-26					
141-51-08					
23) 321-51-18	141-50-58	90-54-20	163.45	163.426	
200-54-25			49.818		
24) 20-54-42	141-50-52	94-56-10	86.57	86.248	
			20.386		
	200-54-15	95-32-50	57.03	56.762	
	200-54-16		17.382		

CLARENCE PETERSON

JUNE 29, 1990 D FARNAM - G. MARTIN

77



GERALD KUHAL

1016

BS13

00-00-12

180-00-22

68-51-23

25) 248-51-39

68-51-11

68-51-17

99-13-35

71.11

21.674

70.544

1016

BS13

00-00-22

24) 243-15-42

243-15-20

152.87

40.595

27) 245-23-35

245-23-13

133.29

40.623

28) 250-15-09

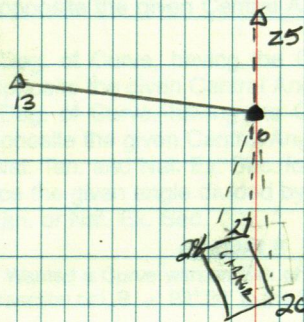
250-14-47

137.02

41.765

JULY 2, 1990 P. FARNHAM - G. MARTIN

78





ENTER ANGLE

GLD-7 (CONVERTS TO DECIMAL)

SIN

DISTANCE X

ENTERED ANGLE

GLD 7

DIST-GLD-5

XZY

GLD 7-0° TO DEC

GLD 8-DEC TO °

98-35-32

139.74

42.597

99-12-21

117.72

35.889

60.15

91.82
27.00
118.82

314-21-33

56.72
56.68
39
4

91-11-33 170.35
51.920

89-19-47 338.44-103.1582
89-45-57 289.07 88.15

101-03-17 108.49
31.545

91-10-18 464.38
141.541

268.45 02 214
268-44 10

60
48
52

101-56-24 100.21 48

89-35-19-181.98-55.468

88-04-16 124.71
38.013

30 585 2 196
2 192
8

88-44-07 360
15 142
16 277-23-00 160.32 48.8612 502

91.35.37 552.80
168.493

107-60-60
30-32

339.11 292

89-47-21
1310.88
399.558

552.50

82-30-2
94 5 17
177-25-45

213.29
57.08
156.21

1310.8683

90-05-00
421.12
128.357

340
332
2 697
348

360
178
2 538
269

16 81
2 33

1473
1112
178
277
3.13

30
33
3332
196.32

2 107 53
660.02
46.00
706.02

2 102 51

360
152
2 552
276

97-34-12

96-10-48
123.57
37.664

98.04
13.81

92-17-18
183.90
56.054

91-23-28 332 62
101.382 164.29

122.8511

89-38-39 183.90
357.99
109.113

90-08-09

1387.57
450.72
93685 15

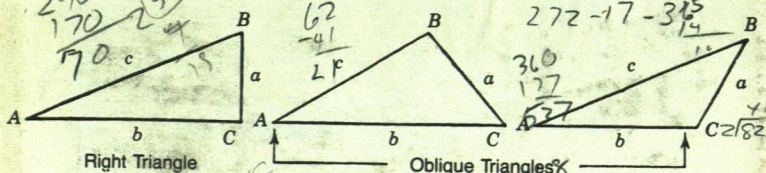
84.23

87
2 174

1326.50
404.316
39
2 178
1/16

186-39-16

TRIGONOMETRIC FORMULÆ



Solution of Right Triangles

For Angle A. $\sin = \frac{a}{c}$, $\cos = \frac{b}{c}$, $\tan = \frac{a}{b}$, $\cot = \frac{b}{a}$, $\sec = \frac{c}{b}$, $\csc = \frac{c}{a}$

Given a, b	Required A, B, c	$\tan A = \frac{a}{b} = \cot B$, $c = \sqrt{a^2 + b^2} = a \sqrt{1 + \frac{b^2}{a^2}}$
a, c	A, B, b	$\sin A = \frac{a}{c} = \cos B$, $b = \sqrt{(c+a)(c-a)} = c \sqrt{1 - \frac{a^2}{c^2}}$
A, a	B, b, c	$B = 90^\circ - A$, $b = a \cot A$, $c = \frac{a}{\sin A}$
A, b	B, a, c	$B = 90^\circ - A$, $a = b \tan A$, $c = \frac{b}{\cos A}$
A, c	B, a, b	$B = 90^\circ - A$, $a = c \sin A$, $b = c \cos A$

Solution of Oblique Triangles

Given A, B, a	Required b, c, C	$b = \frac{a \sin B}{\sin A}$, $C = 180^\circ - (A + B)$, $c = \frac{a \sin C}{\sin A}$
A, a, b	B, c, C	$\sin B = \frac{b \sin A}{a}$, $C = 180^\circ - (A + B)$, $c = \frac{a \sin C}{\sin A}$
a, b, C	A, B, c	$A + B = 180^\circ - C$, $\tan \frac{1}{2}(A - B) = \frac{(a - b) \tan \frac{1}{2}(A + B)}{a + b}$
a, b, c	A, B, C	$s = \frac{a + b + c}{2}$, $\sin \frac{1}{2}A = \sqrt{\frac{(s - b)(s - c)}{b c}}$
a, b, c	Area	$\sin \frac{1}{2}B = \sqrt{\frac{(s - a)(s - c)}{a c}}$, $C = 180^\circ - (A + B)$
A, b, c	Area	$s = \frac{a + b + c}{2}$, $\text{area} = \sqrt{s(s - a)(s - b)(s - c)}$
A, B, C, a	Area	$\text{area} = \frac{b c \sin A}{2}$
		$\text{area} = \frac{a^2 \sin B \sin C}{2 \sin A}$

REDUCTION TO HORIZONTAL

Horizontal distance = Slope distance multiplied by the cosine of the vertical angle. Thus: slope distance = 319.4 ft. Vert. angle = $5^\circ 10'$. From Table, Page IX, $\cos 5^\circ 10' = .9959$. Horizontal distance = $319.4 \times .9959 = 318.09$ ft.

Horizontal distance also = Slope distance minus slope distance times $(1 - \cos \text{vertical angle})$. With the same figures as in the preceding example, the following result is obtained. $\cos 5^\circ 10' = .9959$. $1 - .9959 = .0041$. $319.4 \times .0041 = 1.31$. $319.4 - 1.31 = 318.09$ ft.

When the rise is known, the horizontal distance is approximately: - the slope distance less the square of the rise divided by twice the slope distance. Thus: rise = 14 ft., slope distance = 302.6 ft. Horizontal distance = $302.6 - \frac{14 \times 14}{2 \times 302.6} = 302.6 - 0.32 = 302.28$ ft.

