

307

FIELD BOOK

1885

Letter
US Dept. of Agriculture
Forest Service

May 6th 1958

Supply
Contracts

Contract No 12-11-009-17294

Cadastral Survey Project #3

Mr. Harold Curo
Walker Minn.
Dear Mr. Curo

Your proposal to furnish
Professional Engineering
Services for Corner
Monumentation Survey
Project #3 within the Chippewa
National Forest has been
accepted. Contract No 12-11-
009-17294 has been assigned
to the Contract and a copy is
inclosed. Our purchase Order
No R9-738 is also inclosed

In accordance with Article IV
Time of Performance

you will provide the services
needed within 15 days from
May 6 1958 and will complete
the project not later than
August 1, 1958

The Contracting Officer's
Designated Representative
administratively and technically
in charge is Mr. Pete Meyer any
questions you have should be taken
up with Mr. Meyer

The Equal economic opportunity
poster is furnished herewith
this should be placed at the project
where it can be viewed by your
employees. Regulations of the
Kick-Back Act are also furnished
for your information and guidance

Very truly yours
A.W. Greeley
Regional Forester
by V.S. Gunther
Acting

2 May 21st 1958

This is the day I am to start setting iron monuments according to my contract No 12-11-009-17294

As the Forest Service is to furnish the Irons - paint and paint gun, timber scribe and post for witness monuments

I go to Cass Lake to see Mr. Meyer about the Irons he says they will be here in a few days

The irons I am to set are all in Township 141^N Range 31^W of the 5th P.M. Cass County Minn.

I check over old survey records for corner's to be set and then go out and locate a few of them

July 1st 1958

2

I have just received the irons but nothing else am waiting for witness post as Mr. Meyer wants cedar post set for Bearing Trees where Trees are not close

July 14, 1958

Edward Caro John Caro and I go to the $\frac{1}{4}$ corner North side section 26-141-31 between sections 23 and 26 where US Notes call for the following bearing trees

Poplar 3 N 19° E 17 Lks

Poplar 3 S 43° E 3 Lks

There was no signs of these trees in 1920 when Elmer B. Horst a surveyor appointed by the County Commissioners of Cass County Minnesota to make a survey and sub-divide sections 25 and 26 Twp 141 Rge 31 as this corner comes in center of a private road it was taken out. In making a survey in 1956 I re-established this corner and set a 2x20 inch pipe.

To day we take up my pipe and in its place set a 2 $\frac{3}{4}$ x60 capped monument furnished me by the Chippewa

Harold Caro

National Forest Service being a 2 $\frac{3}{4}$ x60 inch galv. pipe filled with concrete split and flared at the bottom for anchorage with a 3" bronze cap on top. Set its full length in the ground MKD $\frac{1}{4}$ Sec 23 and 26 Twp 141 Rge 31 - 1958

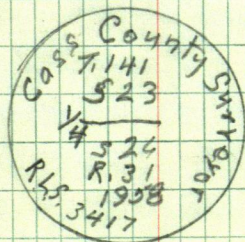
With the following bearing trees a N.P. 22 inches in Diam bears N 34° 56' W. 29.80 feet

MKD Sec. 23 T. 141 R 31 - BT

a Red Oak 4 inches in Diam bears N 39° 29' E 28.60 feet

MKD S. 23 T. 141 R 31 BT

a Red Oak 7 inches in Diam bears S 31° 46' W 24.80 feet MKD S 26 T. 141 R 31 BT



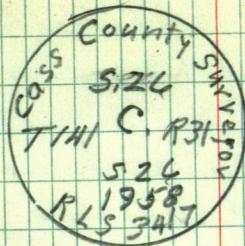
4

July 17th 1958

John Curo Edward Curo & I
 go to the Center of Section
 26-141-31 where we find the
 boiler flue set by Elmer B.
 Horst in 1920 sub-divided
 section 26 for Cass County
 We take up the boiler flue and
 in its place set a $2\frac{3}{4} \times 60$ " capped
 iron pipe filled with concrete
 and flared at the bottom furnished
 by the Cheppewa National Forest
 as this corner comes in a meadow
 with no trees near. We set
 the following for Bearings
 a $4 \times 4 \times 100$ inch cedar post bears
 N 45° E 29.20 feet
 MKD. S. 26 T141 R31 BT
 a cedar post $4 \times 4 \times 100$ inches bears
 S. 45° W 30.15 feet
 MKD. S. 26 T141 R31 BT
 a cedar post $4 \times 4 \times 100$ inches
 bears N 45° W. 32.04 feet
 MKD S. 26 T141 R31 BT

Harold Curo

4



July 30th 1958

John Curo - Edward Curo & I
go to the S.W. corner of Sec 34
141-31

Where we find the boiler flue
set by John M Greene when
he was the County Surveyor
of Cass County this corner was
checked by Cass County Surveyor
John W. Curo in 1950 at this
corner being the corner to
Sections 33 & 34 on the Twp line
we take up the boiler flue and
in its place set a $2\frac{3}{4} \times 60''$
iron monument capped on top
furnished by the Chippewa
National Forest

from which a
Ash tree 8 inches in diam bears
N $40^{\circ}30'$ W 24.90 ft

MKD S 33 T. 141 R 31 BT

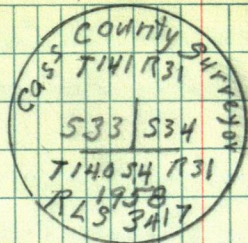
A Red Oak Tree 10 inches in diam
bears N $12^{\circ}06'$ E 43.30 ft

MKD S 34 T 141 R 31 BT

a $4 \times 4 \times 100$ inch cedar post bears
N $70^{\circ}40'$ E 21.54 ft

MKD S 34 T 141 R 31 BT

Harold Curo

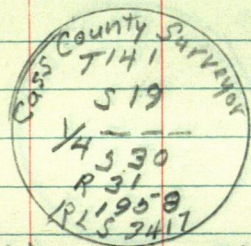


Aug. 3rd 1958

Edward Curo Donald Curo & I
go to the $\frac{1}{4}$ corner between Secs.
19 & 30-141-31

We find the boiler flue set for this
 $\frac{1}{4}$ cor. by Elmer B. Horst in 1921
in his sub-division of sections
30 & 31 T. 141 R. 31 for Cass County

We take up this boiler flue
and in its place set a $2\frac{3}{4} \times 60$ "
iron mon. furnished me by the
Chippewa National Forest
Marked



from which a Elm tree 8 inches
indiam bears S. $66^{\circ}21'W$ 31.45 ft.

MKD S. 30 T141 R31 BT

a Ash tree 7 inches indiam bears
N. $38^{\circ}00'W$ 21.40 ft

MKD S. 19 T141 R31 BT

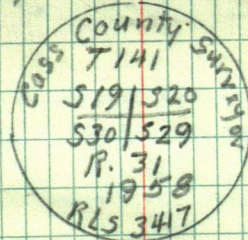
a White Oak tree 8 inches indiam bears
N $57^{\circ}33'E$ MKD S19 T141 R31 BT

Harold Curo

Aug 6-1958

Edward Curo - Donald Curo & I
drive to the corner to secs. 19-20
29 & 30 established by Elmer
B Horst in his sub-division of Secs
30-31-T141R31 With the following
Ties. W. P. 20 N $71^{\circ}00'W$ 83.70 ft
Replan 9 S $13^{\circ}45'W$ 28.80 ft
after looking for 3 days we find
this corner being a boiler flue
which check out from stumps of
Horst's Ties.

We take up the boiler flue and in its
place set a $2\frac{3}{4} \times 60$ inch mon. furnished
by the Chippewa Natl Forest
MKD.



from which a Elm 4 inch indiam

bears N $84^{\circ}44'E$ 20.65 MKD S 20 T141 R31 BT

a Elm 4 inch indiam bears S $32^{\circ}04'E$ 9.45 ft
MKD S 29 T141 R31 BT

a Elm 7 inch indiam bears S $13^{\circ}43'W$ 30.70
ft MKD S. 30 T141 R31 B.T.

Harold Curo

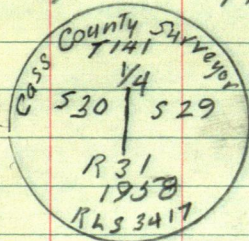
7

Aug. 15th 1958

Edward Curo & Donald Curo & I
go to the $\frac{1}{4}$ corner between seas
29+30 T141-R31

Where we find the boiler flue
set for this corner in 1921 by
Elmer B. Horst

We take up this boiler flue and in its
place set a $2\frac{3}{4} \times 60$ " capped mon
furnished by the Chippewa Nat. Forest
MKD



from which

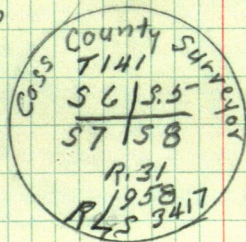
A White Oak tree 4 inches in diam bears
N $2^{\circ}00'E$ 32.05' MKD S 29 T141 R31 BT
A Red Oak 8 inches in diam bears N $75^{\circ}27'W$
26.65' MKD S 30 T141 R31 BT
A Red Oak 6 inches in diam bears
S $67^{\circ}31'E$ 36.75'
MKD S 29 T141 R31 BT

Harold Curo

7

Dec 23rd 1958

Edward Curo - Donald Curo & I go to
the corner to sections 5-6-7-8 T141
R31 at this corner we find a $2\frac{1}{2} \times 48$ "
Galv. mon. capped on top as this is a
good Galv. mon. and capped we mark
the cap and leave the mon.
as set.



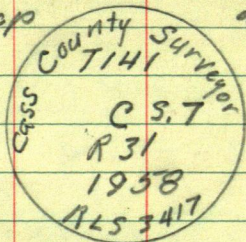
from which

a NP 18 inches in diam bears S $78^{\circ}20'E$
42.30' MKD S 8 T141 R31 BT
a Red Oak 6 inches in diam bears N $18^{\circ}52'E$
19.60' MKD S.5 T141 R31 BT
a Red Oak 9 inches in diam bears N $79^{\circ}55'$
W 20.00' MKD S.6 T141 R31 BT

Harold Curo

Dec 24th 1958

Edward Curo - Donald Curo & I
drive to the Center of sec 7
where we find a $2\frac{1}{2} \times 48$ inch
Galv. mon. with a cap on top as
this is a good capped monument
we mark the cap and leave
the mon. as set



from which

a White Oak 9 inches in diam bears $N 6^{\circ} 50' E$
14.00 ft. MKD. S 7 T141 R31 B.T.

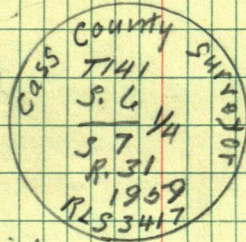
a Jack Pine 10 inches in diam bears
 $S 73^{\circ} 51' E$ 35.35 feet MKD S 7 T141 R31
B.T.

a White Oak 14 inches in diam bears
 $S 54^{\circ} 22' W$ 22.62 ft
MKD S 7 T141 R31 B.T.

Harold Curo

Jan 3rd 1959

Edward Curo and I go to the
 $\frac{1}{4}$ corner between Secs 6-7
141-31 where we find a $2\frac{1}{4} \times 48$
inch Galv. mon. with a cap on top
as this is a good iron we mark
the cap and leave this
cor. as set.



from which

a Jack Pine 20 inches in diam bears
 $N 5^{\circ} 19' E$ 44.65 MKD S 6 T141 R31 B.T.

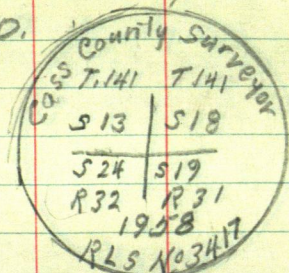
a White Oak 6 inch in diam bears $N 68^{\circ} 56' E$
65.60 ft MKD S. 6 T141 R31 B.T.

a Red Oak 7 inches in diam bears $S. 4^{\circ} 51' W$
48.40 ft MKD S 7 T141 R 31 B.T.

Harold Curo

Dec. 24-1958

Edward Curo Donald Curo & I go to the SW Corner Sec. 18-141-31 where we find the boiler flue set by John Greene in his sub-division of Sec. 18-141-31 for Cass County in 1919 this is the corner to sections 18-19 T141 R. 31 and sections 13 & 24 T141 R32 we take up the boiler flue and in its place set a $2\frac{3}{4} \times 60$ " capped mon. furnished by the Chippewa Nat. forest. MKD.



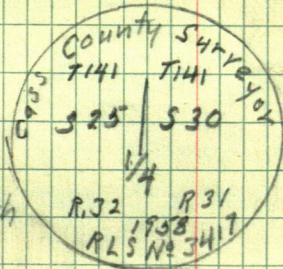
from which

A. Jack Pine 16 inches in diam. bears $S 56^{\circ} 17' E$. 55.60 ft MKD. S 19 T141 R. 31 BT.
 a J. Pine 13 inches in diam bears $S 89^{\circ} E$ 50. 20 ft MKD S. 19 T. 141 R. 31 BT.
 a J.P. 8 inches in diam bears $N 1^{\circ} 57' W$ 58.9 ft MKD S 13 T141 R32

Harold Curo

Dec. 28th 1958

Edward Curo Donald Curo & I go to the $\frac{1}{4}$ corner on the West side of Sec. 30 on Range line and County line being the $\frac{1}{4}$ corner between Secs 30 T141 R31 & Sec. 25 T. 141 R32 where we find a 2×48 " boiler flue we take up this boiler flue and in its place set a $2\frac{3}{4} \times 60$ " capped mon. furnished by the Chippewa Nat. Forest Marked



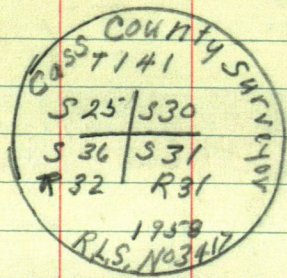
from which

a Elm tree 5 inches in diam bears $S 26^{\circ} 39' E$ 38.40 ft MKD S 30 T141 R30 BT
 as there are no other trees near I set & mark the following
 a Cedar Post $4 \times 4 \times 100$ inches bears $N 82^{\circ} 30' E$ 14.65 ft MKD S 30 T141 R31 BT
 a Cedar post $4 \times 4 \times 100$ inches bears $N 62^{\circ} 09' W$. 8.40 ft MKD S 25 T141 R32 BT.

Harold Curo

Dec. 28th 1958

We go south to the SW corner of section 30-141-31 where we find a 2 $\frac{1}{4}$ X 48 inch Galv. monument marked S 30-31 Dec. 25-36 as the cap is marked with center punch with large figures we take this iron up and in its place set a 2 $\frac{3}{4}$ X 60 inch capped mon. furnished by the Chippewa Nat. Forest and mark same.

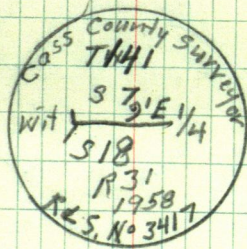


from which

- a Red Oak tree 6 inches in diam bears N 76° 14' W 41.45 MKD S 25 T 141 R 32 BT
- a Maple tree 6 inches in diam bears S 26° 58' W 26.90 ft MKD S 36 T 141 R 32 BT.
- a Maple tree 5 inches in diam bears S 47° 45' E 17.45 ft MKD S 31 T 141 R 31 BT.

Dec. 29th 1958

Donald Curo Edward Curo + I go to the $\frac{1}{4}$ Corner between Sections 7 + 18 Twp 141 Rge 31 as this corner comes in lake Alice and in the sub-division of Section 7 by J.W. Curo for Cass County in 1915 we find the wit $\frac{1}{4}$ set in said survey being 9 ft E of true point for said $\frac{1}{4}$ being a 2 $\frac{1}{4}$ X 48" Galv. iron with cap on top we leave this iron as it is a good marker and mark the cap on to as follows



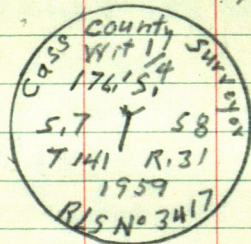
from which

- a Nor. Pine 22 inches in diam bears N 3° 26' E 39.25 ft MKD S 7 T 141 R 31 BT
- a Red Oak 8 inches in diam bears S 78° 31' E 33.15 ft MKD S 18 T 141 R 31 BT.
- a White Oak 6" in diam bears S 34° 20' E 53.00 ft MKD S 18 T 141 R 31 BT

Harold Curo

Jan. 5th 1959

John Caro Edward Caro & I
go to the $\frac{1}{4}$ Corner between
Sections 7 & 8 Twp 141 Rgc 31
as this corner comes in a small
lake we find the M.C. Set By
J.B. Caro in his Sub-division of
Sec. 7 in 1915 for Cass County
on the South side of said little lake
being a $2\frac{1}{4} \times 48$ " Galv. iron man.
with cap on top as this is a good
iron we leave it in the ground &
Mark the Cap.



From which a

White Oak tree 4" in diam bears $S 53^{\circ} 46' E$
28.25 ft MKD. S. 8 T. 141 R. 31 BT

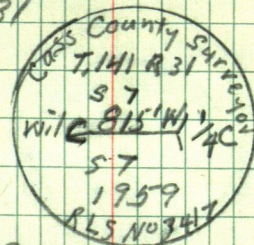
Elm tree 9" in diam bears $S 3^{\circ} 32' E$ 27.30 ft
MKD. S. 8 T. 141 R. 31 BT

Elm tree 7" in diam bears $S 46^{\circ} 33' W$ 46.00 ft
MKD Sec. 7 T. 141 R. 31 BT

Harold Caro

Jan. 5th 1959

From the wit $\frac{1}{4}$ corner on the E side
of Sec. 7-141-31 we walk around the
Lake West to where the E & W Center
line of Sec. 7 enters said lake and
Find a $2\frac{1}{2} \times 48$ " Galv. iron man
cap on top which we mark & tie
in to help hold the center line of
Sec. 7-141-31



From which a

White Pine tree 6" in diam bears $N 59^{\circ} 32' W$
45.80 ft MKD S. 7 T. 141 R. 31 BT

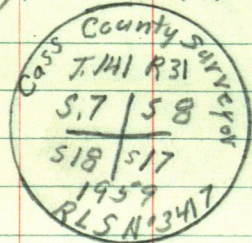
Nor. Pine 14" in diam bears $N 24^{\circ} 13' W$
60.35 ft MKD S. 7 T. 141 R. 31 BT

a $4 \times 4 \times 100$ " Cedar Post bears $S 9^{\circ} 30' W$
22.25 ft MKD S. 7 T. 141 R. 31 BT

Harold Caro

Jan 6th 1959

John Curo Edward Curo + I
go to the SE corner of Sec 7-141-31
being the corner to Sec. 7-8-17-18
141-31 where we find a 2 1/4 x 48"
Galv. iron mon. cap on top set by
J W Curo in 1915 in his subdivision
of Sec 7 for Cass County Minn. as
this is a good monument we leave
it in the ground and mark the top



from which a

Red Oak tree 5" in diam bears N 3° 01' E
27.25 ft MKD S 8 T 141 R 31 B.T.

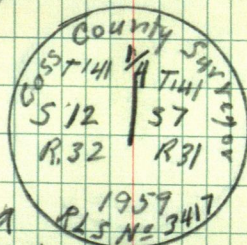
Red Oak tree 4" in diam bears N 77° 14' E
35.10 ft MKD S 8 T 141 R 31 B.T.

Red Oak 10" in diam in cluster of 6
trees bears S 25° 47' W 66.50 feet
MKD S 18 T 141 R 31 B.T.

Harold Curo

Jan 7th 1959

John Curo Edward Curo + I
go to the 1/4 corner on the West
side of Section 7 where we find
the 2 1/4 x 48" Galv. iron monument
set by J W Curo in 1915 in his
subdivision of Sec. 7-141-31
as this is a good mon. we leave
it in the ground and mark the cap
as follows

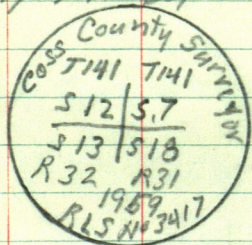


from which a 1959
a White Oak tree 7 inches in diam bears
S 39° 46' E, 8.65 ft MKD S 7 T 141 R 31 B.T.
Nor. Pine 24" in diam bears S 10° 20' W
21.50 ft MKD S, 12 T 141 R 32 B.T.
White Oak tree 6" in diam bears N 57° 22' W
38.85 ft MKD S, 12 T 141 R 32 B.T.

Harold Curo

Jan 8th 1959

John Curo Edward Curo + I go to the SW corner Sec 7-141-31 set by J W Curo in 1915 in his sub-division of said section 7 as this iron is a $2\frac{1}{4} \times 36$ " Galv. iron cap on top but not very far in the ground we take it up and re-set it marking the cap on top



as there are no trees we tie this corner with Cedar Post as follows

Cedar Post $4 \times 4 \times 100$ inches bears $N 45^{\circ} 35' W$

24.15 ft MKD S. 13 T141 R32 BT

Cedar Post $4 \times 4 \times 100$ inches bears $N 46^{\circ} 19' E$

19.16 ft, MKD S. 7-141-31 BT

Cedar Post $4 \times 4 \times 100$ inches bears

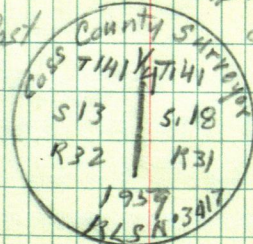
$S 45^{\circ} 26' W$ 23.65 ft MKD S 12 T141

R32

Harold Curo

Jan 10th 1959

John Curo Edward Curo + I go to the $\frac{1}{4}$ corner on the West side of Section 18 T141 R31 set by John Greene in his sub-division of Sec 18 for Cass County. We find this corner being an iron pipe in the center of County line road we take up said iron pipe and in its place put a $2\frac{3}{4} \times 60$ " capped monument furnished by the Chippewa Nat. Forest, set deep in the center of said road 3 inches below road center as there are no trees near we mark the iron cap and set Cedar Post as follows



Cedar Post $4 \times 4 \times 100$ inches bears $S 44^{\circ} 42' E$ 35.85 ft MKD S 18 T141 R31 BT

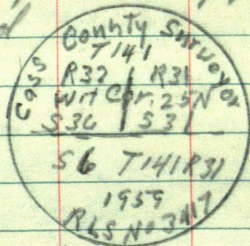
Cedar Post $4 \times 4 \times 100$ inches bears $S 45^{\circ} 12' W$ 39.05 ft MKD. S 13 T141 R32 BT

Cedar Post $4 \times 4 \times 100$ inches bears $N 44^{\circ} 57' W$ 54.72 ft MKD S 13 T141 R32 BT

Harold Curo

March 10th 1959

John Caro Edward Caro & I
go to the SW corner of Section
31 being the SW cor of T141R31
where we find the iron set by
Elmer Horst in his subdivision
of sections 30+31-141-31 for Cass
County as the true point for this
corner is in a pond we find
Horst's iron marked 250 ft N
We take up this iron and in its
place set a 2 3/4 X 60" monument
furnished us by the Chippewa Nat.
Forest marked



from which a

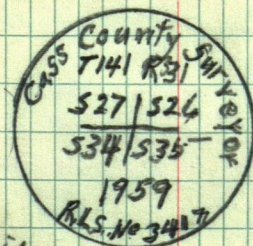
Red Oak tree 5" in diam bears N48°44'E
53.80 ft MKD S31 T141 R31 RT No other trees
a Cedar Post 4X4X100' bears N21°41'E
24.40 ft MKD S31 T141 R31 RT
Cedar Post 4X4X100" bears N58°22'W
23.85 ft MKD S.36 T141 R32 RT

Harold Caro

April 12 1959

John Caro Edward Caro & I go to
the corner to Section 27-28-
33+34-141-31

where we find a 2x48" boiler
flue set for said corner
we take up the boiler flue and in
its place set a 2 3/4 X 60" monument
furnished us by the Chippewa National
Forest marked



from which a

Red Oak 6 inches in diam bears S21°27'W
48.75 ft Marked S34 T141 R31
White Pine 8 inches in diam bears
N48°21'W 53.65 ft MKD S27 T141 R31
White Pine tree 24 inches in diam
bears N36°34'E 58.50 ft MKD
S26 T141 R31

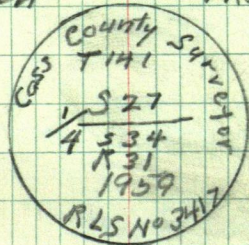
April 13th 1959

John Caro Edward Caro & I
go to the corner of Secs 21-22
~~27-28~~

Apr 14-1959

John Caro Edward Caro & I
go to the $\frac{1}{4}$ corner between Secs
27-34 - 141-31

When we find a 2x48" boiler flue
set for the $\frac{1}{4}$ cor
we take up the boiler flue and in
its place set a 2 $\frac{3}{4}$ x 60 inch copped
iron furnished us by the
Chippewa National Forest
from which Marked



a White Oak 5 inches in diam bears

N 52° 57' W 36.65 ft MKD S 27 T141 R31

Jack Pine 10 inches in diam bears

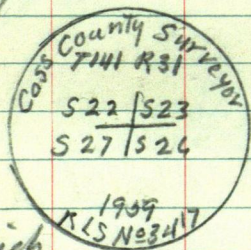
N 15° 11' E 43.20 ft MKD S 27 T141 R31

a White Oak 5 inches in diam bears

S 33° 00' W 35.1 ft MKD, S 34 T141 R31

April 15-1959

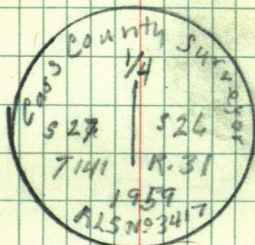
Donald Curo Edward Curo
John Curo & I go to the
corner to Sec. 22-23-24-27
141-31 where we find a 2x48 inch
boiler flue set for the corner
we take up the boiler flue and
in its place set a 2 3/4 x 60 inch
capped mon. furnished by the
Chippewa National Forest
Marked



from which
a Red Oak tree 9 inches in diam bears
N 42° 12' E 18.75 ft MKD S 23 T 141 R 31
a Red Oak tree 8 inches in diam bears
N 43° 38' W 17.80 ft MKD S 22 T 141 R 31
a Red Oak tree 6 inches in diam bears
S 37° 56' W 14.60 ft MKD S 27 T 141 R 31

Apr 16 1959

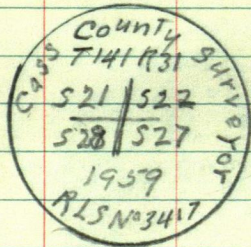
Edward Curo John Curo & I go
to the 1/4 Cor. bet Secs 26-27
141-31 where we find a boiler
flue 2x48" set for the 1/4 cor bet
Sec. 26-27 we take up the
boiler flue and in its place set
a 2 3/4 x 60 inch capped mon
furnished by the Chippewa Nat.
Forest
Marked



from which
a White Oak tree 6 inches in diam bears
N 37° 43' E 10.9 ft MKD S. 26 T 141 R 31
a White Oak tree 5 inches in diam. bears
N 83° 20' W 33.7 ft MKD S 27 T 141 R 31
a Red Oak tree 7 inches in diam bears
S 35° 00' W 34.6 ft MKD S 27 T 141 R 31

April 16th 1959

John Curo Edward Curo + I
go to the corner of Sec 21-22
27-28-T141 R31 where we find
a 4x4x36" square corner post
we take up this and in its
place set a 2 $\frac{3}{4}$ x60 inch capped
iron furnished us by the
Chippewa National Forest
marked



from which

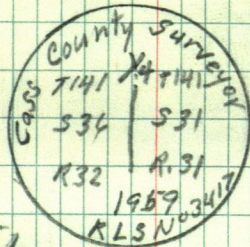
a White Oak tree 7 inches in diam bears
S 82° 32' E 15.80 ft MKD S 27 T 141 R 31

a Red Oak tree 20 inches in diam bears
N 13° 32' W 36.90 ft MKD S 21 T 141 R 31

a Elm tree 14 inches in diam bears
S 38° 16' W 55.70 ft MKD S 28 T 141 R 31

April 17th 1959

Donald Curo Edward Curo + I
go to the $\frac{1}{4}$ corner between
Sec 31 T141 R31 and Sec 36
T141 R32 on the county line
between Cass & Hubbard Counties
where we find a 2x48 inch boiler
flue set for the $\frac{1}{4}$ corner
we take up the boiler flue and
in its place set a 2 $\frac{3}{4}$ x60 inch
monument furnished us by the
Chippewa National Forest
MKD.



from which

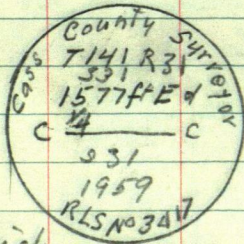
a Jack Pine tree 8 inches in diam bears
S 71° 41' W 32.2 ft MKD S 36 T 141-32

• Another tree near we set a
a 4x4x100 inch cedar post S 49° 37' E
19.50 ft MKD S 31 T 141 R 31

a 4x4x100 inch cedar post N 41° 57' E
17.60 ft MKD S. 31 T 141 R 31

April 18th 1959

Edward Curo Donald Curo & I
go East from the $\frac{1}{4}$ corner on W
side Sec. 31 - T141 R31 a distance
of 1577 ft to the shore of Howard
Lake where we find a 2x48 inch
boiler flue on the E & W Center line
Sec. 31 We take up this iron and
in its place a 2 $\frac{3}{4}$ x 60 inch capped mon
furnished by Chippewa Nat. Forest
Marked.



from which

a Elm tree 14 inches in diam bears S 63° 36'
W 45.75 ft MKD S31 T141 R31

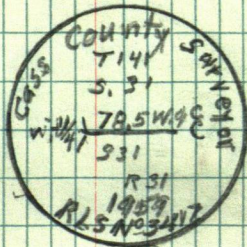
a Elm ^{tree} 6 inches in diam bears S 84° 33' W
46.50 ft MKD S31 T141 R31

a White Pine tree 14 inches in diam
bears S 59° 14' E 14.95 ft MKD S31
T141 R31

April 19th 1959

Edward Curo Donald Curo & I
go to where the E & W center line
of Sec. 31 intersects the East
Shore of Howard Lake where
we find a 2x48 inch boiler
flue we take this boiler flue
up and in its place set a
2 $\frac{3}{4}$ x 60 inch capped monument
furnished by the Chippewa National
Forest.

Marked



from which a

Elm tree 6 inches in diam bears
N 29° 45' E 10.80 ft MKD S31 T141 R31

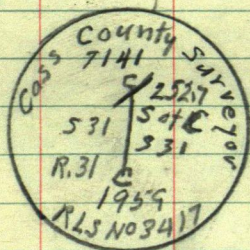
Elm tree 12 inches in diam bears
N 74° 23' E 41.00 ft MKD S31 T141 R31

White Pine tree 9 inches in diam bears
S 24° 03' W 9.00 ft MKD S31 T141 R31

19 April 19th 1959

29

Edward Curo Donald Curo & I
go to where the N & S $\frac{1}{2}$ of sec
31-141-31 intersects the so
shore of Howard Lake where
we find a 2X48" boiler flue
we take up this boiler flue and
in its place set a 2 $\frac{3}{4}$ X60 inch
capped monument furnished
by the Chippewa National Forest
marked



from which
White Pine tree 14 inches in diam
bears S. 3°19'E 32.20 ft MKD S31
T141 R31

spruce tree 14 inches in diam bears
S 75°30'E 3.90 ft MKD S. 31 T141 R31

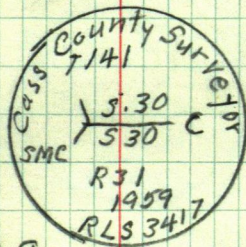
spruce tree 8 inches in diam
bears N. 8°11'W. 23.95 ft MKD S31
T141 R31

30

19

April 20th 1959

Donald Curo Edward Curo
& I go to ~~the center of section~~
to where the E & W $\frac{1}{2}$ of sec 30
enters Howard Lake on the
E side of the lake where we
find a 2X48 inch boiler flue
set for SMC on E & W $\frac{1}{2}$ East side
of Howard Lake we take up this
boiler flue and in its place set
a 2 $\frac{3}{4}$ X60 inch monument furnished
by the Chippewa National Forest
marked



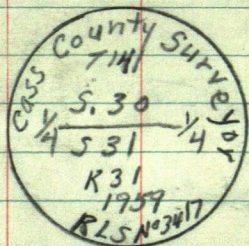
from which a
Elm tree 16 inches in diam bears
N1°48'E 54.3 ft MKD S30 T141 R31
Elm tree 12 inches in diam bears
N 49°53'E. 46.00 ft MKD S30 T141 R31
a White Pine tree 20 inches in diam
bears S 50°57'E 42.50 ft MKD S30
T141 R31

April 21st 1959

(31)

Donald Curo Edward Curo I
go to the $\frac{1}{4}$ cor between
Sec's. 30 & 31 where we find
a 2X48 inch boiler flue set
for the $\frac{1}{4}$ corner between
Sections 30 & 31 T141R31

We take up this boiler flue
and in its place set a 2 $\frac{3}{4}$ X60
inch monument furnished
by the Chippewa National Forest
Marked



from which a

ash tree 7 inches in diam bears
N 69° 30' E. 46.65 ft MKD S 30 T 141
R 31

a ash tree 10 inches in diam
bears N 46° 11' W 109.90 ft MKD S 30
T 141 R 31

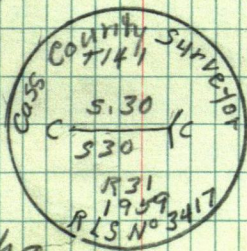
a Tamarack tree 4 inches in diam
bears S 31° 18' E. 70.35 ft MKD S 31 T 141 R 31

Harold Curo

(32)

April 21st 1959

Donald Curo Edward Curo
& I go to where the E & W
Center Line of section 30 T141R31
intersect the west shore of
Howard Lake where we find
a 2X48 inch boiler flue set for a
SMC on E & W & Sec 30-141-31
on west side of Howard Lake
we take up this boiler flue
and in its place set a 2 $\frac{3}{4}$ X60
inch monument furnished
by the Chippewa National Forest
Marked



from which a

a 4X4X100 inch cedar Post bears
N 84° 37' W 18.60 ft MKD S 30 T 141 R 31

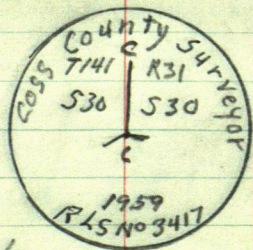
a 4X4X100 inch Cedar Post bears
S 13° 31' W 16.80 ft MKD S 30 T 141 R 31

Harold Curo

April 22nd 1959

Donald Curo Edward Curo
+ I go to where the N4S E
of sec 30-1#1-31 enters
Howard North of the center
of section 30.

where we find a 2X48 inch
boiler flue set for SMC N of
center of sec. 30 on N4S E
we take up this boiler flue
and in its place set a 2 $\frac{3}{4}$ X60
inch monument furnished by
the Chippewa National Forest
marked:



from which a

4X4X100 inch cedar post bears
N 45° 19' E 19.30 ft MKD S30
T141 R31

a cedar post 4X4X100 inches
bears N 14° 23' W 20.20 ft MKD
S. 30 T141 R31

Harold Curo