

254

WILHELM

1868

1868

1868

1868

1868

1868

1868

1868

1868

1868

1868

1868

1868

1868

254

Amel Turp
137-32

2 8
1 2
8 2
4 4
8 6
0 8
0 7
1 2
0 2

1 0
7 0
7 0

1 7
3

1 6
1 7

1 0
1 1

1 0
1 1
1 0
1 0

1 5
4
8 6
4

2 1
2 2
4 4
2 5
1 5

This Field Book is manufactured of a High Grade 100% Rag Paper Having a **WATER RESISTING SURFACE**, and is sewed with Bing Special Enamel Waterproof thread.

Made in U. S. A.

Nº 254

Ansel 1

Note: This book
Nº 254 is the personal
property of John W. Curo of
Jenkins Minn

137-32 Ansel Town road 3-28

{ 142-32 - District of Stearns Co. River
and.

{ 143-32 Lakeport Trws bath in
Hubbard County

Working for H. L. Dosland and.

Sig. Mundhield

of Moorhead, Minn. 30-46

Judkins, Laporte, Hubbard Co.

Lot 1 Section 18-143-33 - 48 to 52

Parke, Laporte Minn Hubbard Co.

Lot in Laporte 53-54

NW cor sec 19 - 144-31 =

NE cor sec 24 144-32 =

Fred Zwiemel who owns part of

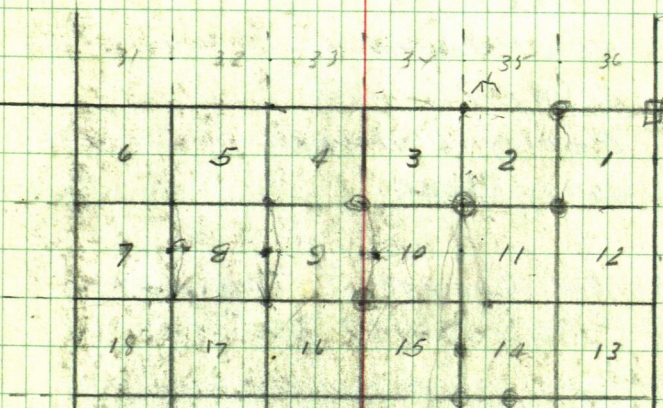
Lot 4 Sec 19-144-31 - 126

EB + M. Reilly Co. Sec 9-142-31 - 73

→ Leach Lake Lodge Jack Gleason A

Anset
137-32

67



4 Ansel Turf Cars Co Minn
137-32

TOWN Board

FW Johnson

ch

Nels P. Jensen

Alva A. Mowan

Perley Chitwood

clk

Julius Skaar

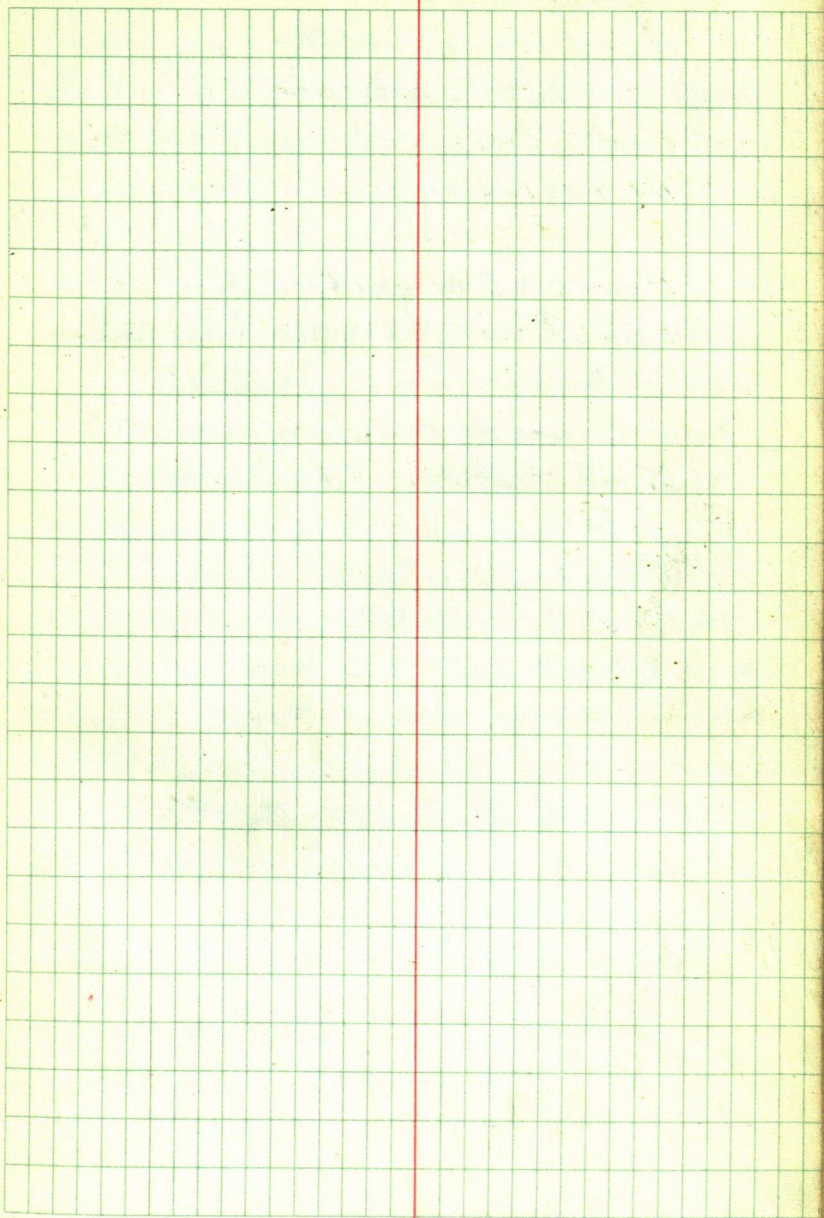
treas

Wanted One Mil Turf road
bet Sec 1-2-137-32

②

Ansel

5



6

Oct-1-1940

Reed leaves Walker in Fore
Coop. 8.45 9.45 ar at

Elwell Store - see Roy Peterson
about lost Corner to Sec

NW COR Sec 2-137-32

pick up Alva Morvan - Called
on Johnson and Jensen
Too busy to help on survey
Pick up Pearley Chiliwood

At NW COR Sec 2 - Being
Cor to 2-3-137-32

34-35-138-32

Intersection of Town Line
Road to Pine River and State
Highway Elwell Road

Barker-Watley Road
Iron lost?

We dig till noon

Alva Larson helped 1 Hr

AM:

⁴
Ansel Twp

7

P.M.

Set Sta 0.0. about 15 feet SW
of E.P. of road = R.R. Spike
Ties

Tal pal SE 41.7

Fence Cor NW 57.4

Steel Signpost NE 65.6

Chilwood no work in P.M.
Alva Larson. helper in P.M.

Alva Howan + Reed Cunn

Chain East along the
shoulder of new grade

300.000- 900 1200 1500 180

2100 2400 2700 3000 3300

3600- 3900 4200 4500 4800

5100 set pins

5280 Set Hut R. Spike

Naton line

Continue

Straight to line East

JP 12 SE 65.30

Stump JP 12 SW 33.00

8

5

East on Town line continued

5400-5700-6000-6300

6600 6900 7200 7500

7745. Hut under π

(about 7650 road turns SE)

Cut line East

7800 pin 7926.8 Hut about
in line with an old
slake - may have been set
by Jim Flynn and Horst
for 4th Cor

Old slake set 5 10 or 15 ft
about north from our chain
7926.8 East

8100. pin 8243.6 Hut
RR Spike on Hi hill

Drive East half a mile
" Township Cor

138-32

138-31

137-32

137-31

Angel Twp

9

Oct 1-1940 continued

Dig for Twp. Cor. Drive
one mile road 1 west to
Ross Hanes res.

Ros says Twp Cor sets 53 ft
SE of J.P. and 35 ft SW from an
old stake

Out at 6 - pm

Drive back to Walker
Jack Curran at Ho all day
Examine in Beaver
Morty with us in walks

Reed Ford

October 2 - 1940

Lr Mathias Walker
Reed and I Lr Walker in
my car 9-AM.

Claps at Pine River
10-30 To 2-30 PM

Ar at Edwell Store
3 PM.

Roy Peterson tries to
show us where John
Green found the corner
N.G.

Reed and I call on Burfield
an Mowan at Threshing
Machine. Then drive to
and East N. Co

1-2-11-12-13 7-32
when Horstmales call for
I m and BTS via

⁸
Ansel Twp

11

We check up on old bearing lines
and stumps and decide this
I m has NOT been moved as
reported

Frank Schmeltzer goes
north to pick up Frank
Moodick - we call but
Moodick is gone

Drive north
Flag Axel Larson and
his County Grader who
gives two digs and hits
Twp Co

Then we drive back
and flag Stat Grader
Alfred Johla tries to plow
out I m at Elwell Close
Road Too Hard.

We drive to Johnson res
and to his field but do
not find him

Back at Co L

2-3-10-11-137-32

we find IM and BTS
called for in Horst's notes

Then drive N-E to
Talk with Muldick who
says he knows a lot of
corners and will show us

Book L. Walker via
Pm. Ruess and Jenkins
Reed finds Bance in
Jenkins and stays there

Jahred Curo

Oct 3 - 1940

Reeds Nails

L. Jenkins with Eunice 8 AM.

At 10 AM. at Twp Cor and
friend waiting

Alva Mowen

Bill Burfield

Leonard "

Ken "

Pearley Chilwood

Leek ? ?

Frank Schmeltzer

We dig up and straighten
the Town Corner which was
leaned East

This Twp Cor is 8x8 Corn
Block 4 inch Cort pipe
recovered or 5 ft long

We find it broken
off 3 ft down.

14

Drive to Johnson res and find
he is in Beavercreek

Boch on the survey
Cunice and I eat dinner
with Alva Mowan

PM.

Put Bill and Ken Burfield
digging for I M at NW 1/4 2.

Leek and Mowan and I

East bet bet 2-11-137-32

300 ft steel tape

Horsli's call for

5307.70 - we find my ch

5309.85

Nab: Charming East

I allow 1/2 ft for Crook in
ditch --

I still believe this cor to
1-2-11-12-137-32 hrs

Not been moved or
reported

Reed Furo

¹²
Ansel Twp

15

Met Leonard Burfield and his
car and with 2 cars 4 men of
North bet 2-3 -

Horstnalis call for 5270

@ 5204.30 Spike Hat O.O. Temp
On Page 7.

This 5270 falls 60 to 70 ft
North of TP of Roads and is
hoshit N.G. for Horstnalis?

Corner holes dug at road
corners and all drive E-A
Continue to line

East on Town line

Reg @ Hat 8243.6 Pg 8

Eat 8390 ent meadow

8543.6

8843.6

9143.6

149.05

9292.65

9143.6 +

149.05 =

9292.65 Hat RR spike

NW shoulder of road in curve

16 Oct 3-1940 continued

Beg @ 9292.65 E continued

East 3-6-9-12- 1200 +
149.15

Added To

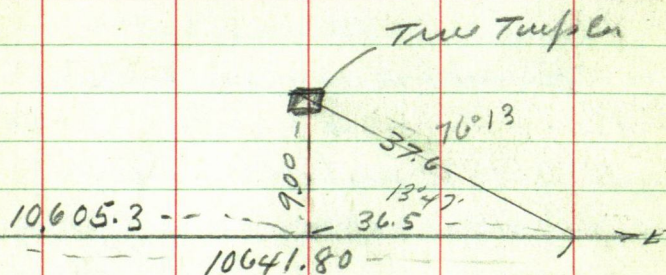
1349.15
9292.65

equals --- 10641.80

P.R. spike Hub on
to shoulder of E road
Temp Twp Cor

True Corner set

X over 10641.80 E Corn Cor set

NW angl $76^{\circ}13'$ ~ 37.6 ft

13°47'

Sine $2391 \times 37.6 = 9.00 \sim$ Cos $97100 \times 37.6 = 36.50 \sim$ Tang $2462 \times$

10641.8

36.5

10605.3

at a point 10.605.30 East from
O.O. The Township Corner
sets North 9.00 feet

Then T. Twp Co

JP12 N 29° 37' E 81.65 ?

JP10 N 36° 19' W 88.50 ?

JP8 S 45° W 58.60 ?

JP9 S 41° 15' E 48.40 ?

This Twp Co sets ft
West from intersection of
a graded road running
South

Quit at 5 P.M. and return
to Jenkins

Reed Ford

18

15

Oct 4 - 1940

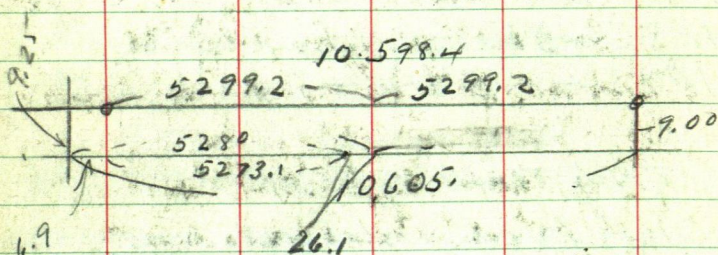
$$\begin{array}{r} 5299.2 \\ 5273.1 \\ \hline 26.1 \end{array}$$

$$\begin{array}{r} 5280 \\ 6.9 \\ \hline 5273.1 \end{array}$$

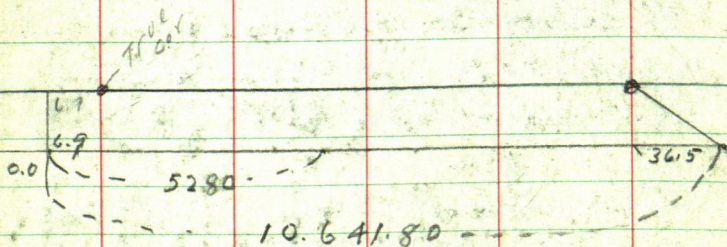
$$\begin{array}{r} 10605.30 \\ 6.9 \\ \hline \end{array}$$

$$10598.4$$

$$\begin{array}{r} 15299.2 \\ 2) 10598.4 \\ \hline \end{array}$$



$$\begin{array}{r} 5299.2 \\ 2 \\ \hline 10598.4 \end{array} \quad \text{OK}$$



$$\begin{array}{r} 36.5 \\ 6.9 \\ \hline 43.4 \end{array}$$

16
Ansel Twp

Oct 4-1940

1 Rain all AM.

Read and I figure
connections

12-30 PM Lv Jenkins
in my car Look up corner
1-30 Call on Bill

Burfield He is out and
use it word for him

Pick up Frank
Woodie and drive
Frank tries to show us
Where 15 or more years ago
Hort and Flynn

Subdivided Sec 36-
Frank shows us an old
cut out line running
North from Flynn's
SW Cor of 36

Flynn and Hort nalis say
they "found" the bearing
lines at the NE Cor Sec 1
= SW Cor 36. but they did
not

20

2-30 P.M. The whole gang
gather at NW Cor Sec 1.

Bill and Leonard Benfield,
Johnson and two others
in the gang

We decide to put the Elwell
corner smack in the center
of all roads

Reed, Alva and I intersect High-
ways and drive RR spiky for

TRUE COR To

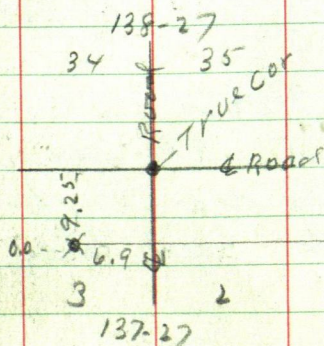
2-3-34-35 T137-138 R 32 Ties

Iron Sign Post NE 54.00

TL Pole SE 42.10

Iron Road Sign SW 59.10

Fence Cor NW 55.65



18 Ansel Turp

21

1940 Time Sheet working for Ansel Turp

Oct	Sun 6 7						
	1	2	3	4	5	6	7
John W. Corro	1 1/2 PM	-	-	1	1	0	3 days
Car	50	50	-	50	50	0	= 200 @ 5¢ = \$10
Expense	-	-	-	-	-	0	
Reed Corro	1 1/2 PM	1 1/2 PM	1 1/2 PM	1	0	-	4 days
Car	-	-	50	-	-	0	82.5¢
Alva Mowan	1	-	1 1/2 PM	1 1/2 PM	1	0	
Perley Chitwood	1/2	-	1/2	-	-	0	
F.W. Johnson	-	-	-	17	1	0	
Bill Burfield	-	-	17 PM	17 PM	9	0	
Leonard "	-	-	17 PM	17 PM	0	0	
Frank Moodick	-	-	-	17 PM	0	0	
Alan Larson	1/2 PM	-	-	-	-	0	
Ken Burfield	-	-	17	-	-	0	
Leek	-	-	1	-	-	0	

22 Oct 4-1940 cont'd

Woodie - Bill Beaford & etc

try to cut out Flyings and line
North while Red also and I

Set Red Flag at True Cor

2-3-34-35 in E road

Drive $1\frac{1}{2}$ miles East to Hat7745 E on random where we
set Buff π Turn 90° North9.17 ft and set RR spike Hat
on True E-W line

(Nab 0.10 to Far N ?)

 π over Hat 9.17 Focus $1\frac{1}{2}$
miles west on line cor and

Rake in line at

1-2-35-36 Set Roe of pin

E-W on line line

Then From Random Hat

5280 E ch E 26.10 and Set
RR spike in E E-W Road

True Cor 1-2-35-36

137-138 N R 9 32 W

JP 7 N 55° E

74.52

Crooked 12" JPS 50° 20' E 46.50

JP 11 S 58° 32' E

69.15

JP 9 S 33° 50' W

64.05

20
Ansel Turp

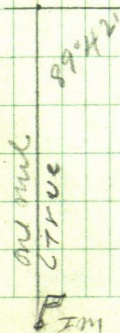
23

Raining harder almost dark
Crew Quit - We drive Frank
Woodie home then Reed and I
alone drive west to Elwell Stn
Then drive a mile So set
Flag @ 2m 2-3-10-11

X OVER TRUE NW COR Sec 2
Focus $1\frac{1}{2}$ miles East on wheel
brush Pal on True line
Sweep SE angle $89^{\circ}40'$
Too dark to see only when
clouds lift for 30 seconds
in the west

Reed drives a mile to turn
Car lights on Flag at 2m Sec
Cor. bucket is too low to see
Angle about $89^{\circ}42'$

$1\frac{1}{2}$ mile True line P



24 Oct 4-1940

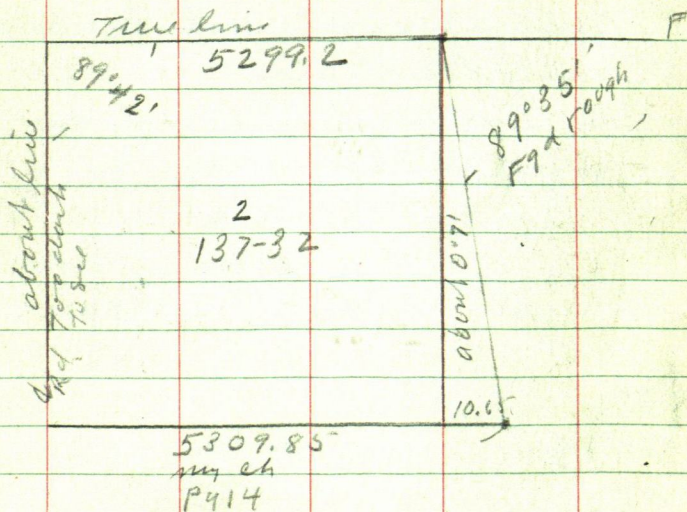
Reed and I to for Jenkins
 Meet Johnson and men in
 Foot Hills stuck with big
 grader

Reed drives the thing 3
 miles West to Elwell Store
 Dark as hell

\$1. for gas at Pine River
 Find Emico with Martha
 at Jenkins

Reed and Emico stay over
 night. Reed and I

FIGURING



John W. Cress

Oct 5-1940 Sat

Up @ 8-AM Cloudy-rain at 9.

Breakfast with Martha and

Eunice 8-30 Reed and I leave

my car - Call on Oliver Olson at

Pine River An Ansel Twp 9-AM

Friend Johnson and Woodliff

cutting so

Turn over NW Cor Sect 1-137-32

Focus half a mile E on white

slake on line

Turn SE angle 89°35' run

Pouch bet Sec 1 & 2.

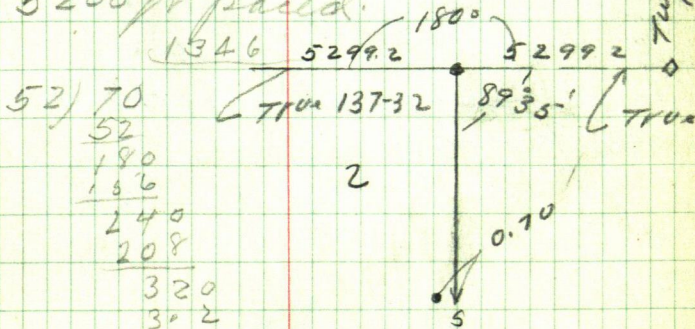
Reed power 3-6-9 ft etc. set

small wood hit

Our line hits 0.70 of a foot

East of IM @ 1-2-11-12

5200 ft paced.



26

Correcting

00013460

300	5	gas west	0.04	✓
600	"	"	0.08	✓
900	"	"	0.12	✓
1200	"	"	0.16	✓
1500	"	"	0.20	✓
1800	"	"	0.24	✓
2100	"	"	0.28	✓
2400	"	"	0.32	✓
2700	"	"	0.36	✓
3000	"	"	0.40	✓
3300	"	"	0.44	✓
3600	"	"	0.48	✓
3900	"	"	0.52	✓
4200	"	"	0.57	✓
4500	"	"	0.60	✓
4800	"	"	0.64	✓
5100	"	"	0.68	✓
5200	"	"	0.70	✓

Set slakes 13 ft out.

set 30 x 2 1/4 in steel slak

²⁴
Ansel Turp

27

Truss To 07°40'

1-2-11-12 137-32

W Oak 12 N 38°00' E 224.75 = 225.25

Note: another 14 ^{Row} in Oak
stands 6 paces E or ESE

W Oak 10 N 84°04' W 291.55

Roals of old 15 WP stump near
N 33°50' W 37.2 To Heart
Old stump N 35° W

12" Swampy Oak

S 63°47' E 79.90

80 Rods of graded road runs
N 88°05' W

Another graded road for 80
Rods S runs S 1°25' W

Oak stump 12 S 63°25' W
66.85 To RR. Spike in heart

3-30 PM Quit

John W. Cress

25

28

Amel

137-32

Oct 16-1940

Oct 19 1940

PR to Anna West Road
Ross who shows me all the
corner etc

142-143-32 ① Hubbard County 31
June 30, 1951.

H. L. Dosland and Sig Mundhijll
of Moorhead Minn. call at office
some time ago I go with these
men to Kabe Koria Lake to look
over the land they bought from
Leonard Peterson Reg of Woods Walker

They asked me at that time
what it would cost to run out their
lines. I tell them that I would
run the W line of Sec. 32. the
South line of Sec. 32 and the lines
N between Gov't. Lots 1 and 2 for \$150.00
they say they will let me know.

Later

They write to W. Omar Magelssen at
Walker Shoe Company. They do not have
the cash and want to know if I
would take a 50 foot lot and do the work
I say no I might do it for 100 foot lot
They say O.K. and send Magelssen
a sketch showing what they want
done. as it takes in Gov't Lots 1-2
and 3 of Sec 5-142-32 I say no.
I go to Park Rapids and get ties
to the M.E. lot Secs 31-32-143-32

32

142-143-32²

Hubbard County

also ties to SW Cor Sec 32 and
1/4 corner S side 32 to US notes on
M.C. S side 32-143-32 from
Hubbard Co. Surveyor

To day June 30th 1951 the owners
come from Moorhead to see me
they say go ahead as I said
and foreget Sec. 5-142-32.

They own Hor't Lots 1-2
Sec. 32-143-32 and Hor't Lots 1-2-3
Sec. 5-142-32

I am to establish their West
Line and South line of the Land
in Sec 32-143-32 and run the
line bet Lots 1-2.

They are to give me a tract
of Land 100 ft wide between
the road and the Lake - same being
the W 100 feet of Lot 2 Section 32
143-32 Lying North of the present
traveled road, in pay for said work,

I have mislaid the notes I
got in Park Rapids. I look
but can not find them Keep looking

Sec. 32-143-32 ③
Hubbard County. Minn.

33

July 17-1951 Look like Rain
I go to the office and take
another look for the notes I got
in Park Rapids - and find them
so I will put them in this book
so as to have them when I want
them

Ties to $\frac{1}{4}$ Corner S. side Sec 32-143-32
pop 10 S 57°30' W 31 ft
W.P. 8 S 36°30' E 24.50

S.W. Corner Sec 32-143-32
White Pine dead 10 N 14° W 46 ft
Spr. " 10 N 65°15' E 32.25
J.P. 12 S 50° E 44
" " 12 S 24 W 39

M.E. NW Cor of Sec 32-143-32
MC No 16
J.P. 8 S 45° W 14 Iron pipe
J.P. 10 S 25° E 27

U.S. Notes - 142-32

 $\frac{1}{4}$ bet Section 4-5Tank 8 S 52° E 20 LksCedar 5 N 22° W 20 "

4-5-8-9 - 142-32

W.P. 30 N 60° W 54 LksN.P. 30 S 78° W 109 "W.P. 30 N 22° E 135 "W.P. 30 S 33° E 227 " $\frac{1}{4}$ Cor. bet 5-6 comes in lakeWit $\frac{1}{4}$ - 150 Lks S. of $\frac{1}{4}$ - 142-32Tank 6 S 3° E 12 Lks" 15 S 76° W 20 "

5-6-7-8 - 142-32

B.P. 12 S 83° E 13 Lks" " 12 S 51° W 12 "" " 8 N 62° E 21 "" " 7 N 50° W 7 " $\frac{1}{4}$ bet. 5+8 - 14232N.P. 10 N 30° E 8 Lks" " 7 S 57° E 20 "

Sept 12-1951

Lyrr McPh & I Lr Welkes

@ 10 o'clock with our lunches
drive to Kaben Kena Lake
to MC bet Sec 31-32 - 143-32
Where Notes I got from Hubbard
County Surveyor Wilsey says
M.C. N^o 16 between Sec. 31-32

J.P. 8 S 43° W 14 ft
J.P. 10 S 25° E 27 " Iron Mon.

We find the SW tree standing
green and plainly marked with
scribe also the SE stump scribed
B.T. from these B.T. I set a 60 ft
spike for true M.C. by flat chain
and run South

Turn right in Spain hub BS Nor
MC Bill Spain's IM Lot Cor bet
Lots 24-25 into E about 80

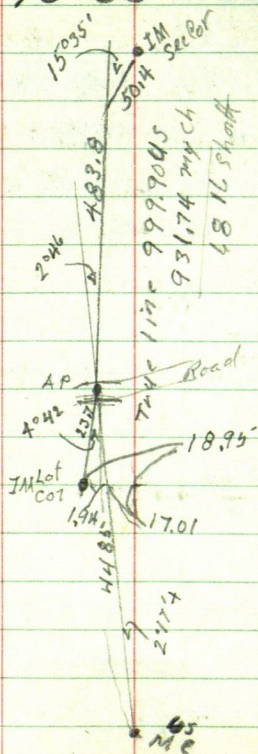
@ 38.9 S of MC Hub @ 221.9 Hub @ 440
@ road @ 448.5 hub s edge of road

Turn hub 448.5 site Nor on random
line Spain's IM NW Cor Lot 24
set R 4° 42' - 23.70 on NE

as our pandora is running
E of old cut out line running
south and as this old cut out
line comes out E of I.M. Sec Cor.

T still over hub 448.5 B.S. Non M.C.
(random) Transit telescope and turn
(R) on W $2^{\circ}46'$ @ 159.8 hub + 324 =
483.8 hub

Now 483.8 Sec Cor I.M.
bears R. $15^{\circ}35'$ 50.40 ft



2730
2335-
1395-

Correction Section line between
Sections 31-32 - 143-32

Correction .04003756 - 2'17"

Hub 38.9 S goes W 1.56 to true sec line

" 221.9 S. " W 8.88 " " " "

point 424.88 S = point 1.94 W of IM Lot
SE cor Lot 24 goes W 17.01 to True Sec line
Hub 448.5 in S side of road goes W 17.96 to
True Sec line

South of road

Hub 159.8 = 608.1 S of M.C. goes E 7.71
to 1st random then W 24.35 to Sec line
Hub 483.8 S of road is 931.74 S of M.C. goes
E 23.35 to 1st random then W 37.30
to true Sec line

point 531.64 S goes E To 1st random
Then W 39.22 ft to IM True corner
to Sections 5-6 - 142-32 & 31-32
143-32.

Sept 1951 Sat.

Don, Ed + I drive to Sec. 32-143-32
run E from SW corner 90° to W
line of Sec. 32 @ 363.1 hub 60° spike
@ 587.25 E hub 60° spike

143

142

143

3/1

Kabe Koma 32

33

late

143
142

2400
1320
2000
1320
2700
1815
10 ft

143
142

6

5

4

8

Monday Sept 17 1952

Keith Price + I LV Walker @ 10-15-
drive to Section 32-143-32, and
continue Township line E from
hub 587.25 E of SW cor Sec. 32
+ 300 = 887.25 min @ 940 enter
map @ 1000 LV map @ 1071.65 hub 609
 $887.25 + 300 = 1087.25 \text{ min} + 251.6 =$
 $1323.25 \text{ hub 609 spike}$
Home at 5-45-
10-15- to 5-45- = $6\frac{1}{2}$ hr 1 hr for noon
Travel time

Tue. Sept 18th - 1952

Keith + I drive to Lake Ada
to see about Platting job.
Wants work done for less than
\$100. I tell them - \$350

nothing doing home at 3+-
I give Keith \$200 on acc.

May 16th 1952

as I told the Register of Deeds. that I would work at Hakekonna Lake this week and he wrote and told the owners

I Gertrude & Ed Lr Walker for Section 32-143-32 Lr car on road near $W \frac{1}{4}$ line S. side Section 32 & Walk South to hub 1323.25 E from SW corner of Sec. 32. on temp S. line Sec 32

Tover 1323.25 We continue our random Line East @ 1684.75 E hub + 289.5 = 1974.25 hub. quit for lunch
PM,

Continue East on random + 797.8 =

2772.05 hub on S edge of road on top of hill + 481.5 = 3253.55 hub on N edge of road. road turns SE continue line E 126.8 = 3600.35 hub. We walk East and find IM at $E \frac{1}{4}$ Cor. N side Sec. 5 Walk E to lake where we find I.M.M.C.

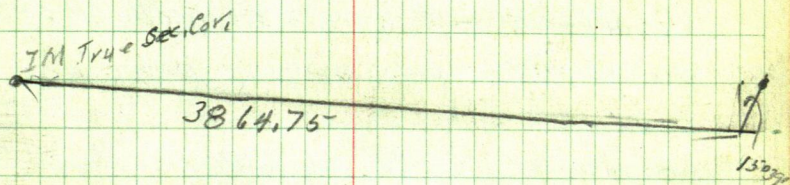
home

May 17, 1952

Don, Bob and I & Walker drive
to Sec. 32-143-32 Tower hub 3600.35
continue random line East 264.4 =
3864.75 E th. I.M. E. Cor N side Sec
32-142-32 sets N. 15° 39' E 9.90 feet

We correct our random line N to
true line before we continue our line
East to the MC between Twp 142-143-32

Corrections



N 15° 39' E 9.90 ft

Sine 269760 x 9.9 = 2.67 E

Cosine 962928 x 9.9 = 9.53 N

3864.75 E + 2.67 E = 3867.42 E + 9.53 N

9.53 ÷ 3867.42 = 0.002464175

3867.42 | 953.000
 , 00246

our random line goes N. 0.00246415° of a ft
for each foot East = 0° 08' +
corrections on next page.

May 17-1952

Corrections for South line Sec. 32-143-32

hub 363.1 East goes North .89

" 587.25 East " North 1.45

" 1071.65 East " North 2.64

" 1323.25 East " North 3.26

" 1684.75 East " North 4.15

" 1974.25 East " North 4.86

" 2772.05 East " North 6.83

" 3253.55 East " North 8.02

Hub 3600.36 East " North 8.78

" 3867.42 " " North 9.53

$$3867.42 \div 3 = 1289.14$$

$$\begin{array}{r} 1289.14 \\ \times 3 \\ \hline 3867.42 \end{array} \text{ OK.}$$

hub. 1323.25 E goes W 34.11 to

1289.14 E and then N 3.18 to W $\frac{1}{4}$ Cor

hub 2772.05 E. goes W. 193.77 to

2578.28 E then N 6.35 to $\frac{1}{4}$ CorTies to $\frac{1}{4}$ Pop 10 N $55^{\circ}10'E$ 50.18" 5 N $48^{\circ}49'W$ 43.55Twin Birch S $51^{\circ}42'W$ 44.52Pop. 9 S $10^{\circ}50'E$ 37.5

We correct hub. 3600.35 - 65

Then IM. $\frac{1}{16}$ cor site W on corrected hub. 3600.35 and run E 341.1 to M.C. on bank 20 ft W of water edge and 15 ft S of water edge of Kabekonna Lake

From S E Cor of Sec. 32 to M.C. on lake My chain = 4208.52
Gov't chain = 4453 = 246.48
short = .0553266 as this does not check and as the IM set by Todd for the $\frac{1}{4}$ corner is gone I deduced the distance between the Sec. corner and the $\frac{1}{16}$ as we find it

from $\frac{1}{4}$ South side Sec. 32-143-32 we run N $0^{\circ}08'E$ @ 33 ft set IM, + 253.6 = set IM on brink + 60.4 we set an IM or seawall 10 ft from water edge on N 45 E Sec. 32-143-32
Run N parallel to the West line of Sec. 32

183
253.6
60.4
347.0

May 19-1952

Monday Gert & I drive to W $\frac{1}{4}$ corner S side Sec. 32-143-32 where we correct our random line S line Sec. 32 see correction on page 42. this book 234 and set a 1x40" IM for true W $\frac{1}{4}$ corner S side Section 32-143-32 and run N parallel to the W line of section 32 @ 133.05 set a 1x36" IM @ 166.3 a 60 $\frac{1}{2}$ spike in $\frac{1}{2}$ road @ 199.55 set a 2x30" IM @ 281.8 set 60 $\frac{1}{2}$ spike @ 381.4 we set a 1x36" IM on brink @ 420.1 we set a 1x36" IM on seawall 10 ft S. of waters edge

At over 381.4 we turn 90° and run E 100 ft and set a 60 $\frac{1}{2}$ spike @ 166.3 we turn 90° and set 60 $\frac{1}{2}$ spike in road ditch. this should be the E line of the 100 ft tract I am to get for Surveying.

At over spike in $\frac{1}{2}$ road 166.3 ft N of $\frac{1}{4}$ cor we run out the road with stada using W $\frac{1}{4}$ line as N & S.
 We run viz. S 82°46'E 680 ft to sta A in $\frac{1}{2}$
 from A S 82°24'E 469 ft to B in $\frac{1}{2}$
 " A S 84°02'E 820 ft to C 10' S of 2

from C Werun $N 88^{\circ} 52' E$ 375 to D in $\frac{1}{2}$
" C " " $N 89^{\circ} 48' E$ 485 to E in $\frac{1}{2}$
" E " " $S 67^{\circ} 06' E$ 295 " F in $\frac{1}{2}$
" F " " $S 67^{\circ} 06' E$ to end, +

46

16.

126.9
66
173.5
2327
419.1

5067.58

133865

133346

120011

120011

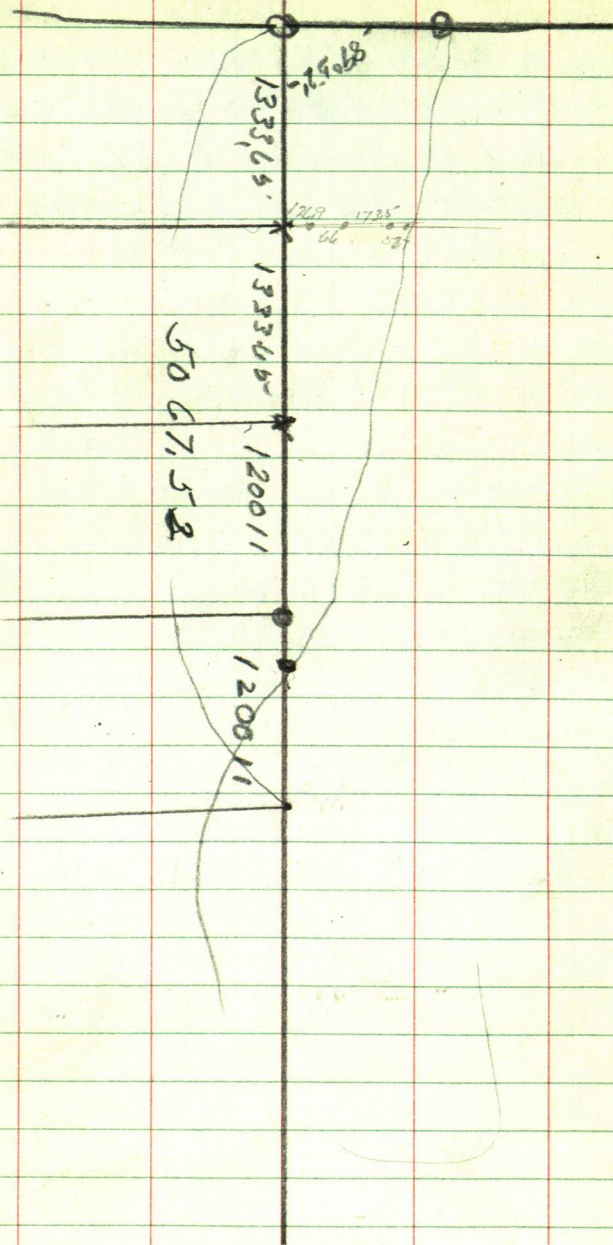
75.68

1269

1735

66

537



48

Trip 143 Rge 33

1102.20ft

U.820 $\frac{1}{4}$ 1989 U.8°

4000

NP8 N3GE
51

N. P13S19E55-

18

1.90

1194.60ft

1810

$\frac{1}{4}$

9275"

Feb 11-1952

Judkin's owner of Lot 1 Section 18
143-33 - address La porte Minn
Hubbard County Calls at my Office
There are some large Pine
Trees cut and he thinks they are
on his land. Hubbard Co. Surveyor
run the line and Judkin's does not
think it is right. Judkin's goes
to Park Rapids where he is told
that the road on the W $\frac{1}{4}$ line of
Section 18 is on the true line
and that there is an Iron cor
at the W $\frac{1}{4}$ cor bet. Sec. 7-18 - under
the tar of highway No 4 - (71) (92)
The highway Dept at Park Rapids
told him if he started in the
C of the old road running S
from said $\frac{1}{4}$ Cor and chain
West along the Tar road 1102.20 ft
it would put him on the NW cor
of Sec. 18 his NW Cor. I have no
Notes No Plat or anything to go on
but he wants me to come over
tomorrow. I say OK.

Harold Euro

Feb 12, 1962

I Lv Walker at 9 O'clock in my car
drive to Judkins place in Lot 1 Sec
18-143-33 Hubbard Co. arrive @ 9.25

Judkins + I drive and talk to
the members of the Town Board
look over road map of Town road.
N + S through Sec 18 + 19 along the
West $\frac{1}{4}$ line of said Sections

Dinner with Judkins

P.M.

at a point in $\frac{1}{4}$ of State Highway
E + W. in line with $\frac{1}{4}$ Trp road
South also in line with old fence
post N. I drive a 60^d spike in
 $\frac{1}{4}$ said Tar road.

Over said 60^d spike site
South on $\frac{1}{4}$ road. $\frac{1}{4}$ of Tar road
W bears S $87^{\circ}45'W$.

Fence post N bear N $2^{\circ}15'E$

From said spike I chain W
along $\frac{1}{4}$ tar road 1102.2 and
drive a 60^d spike in $\frac{1}{4}$ of said road
Temp NW Cor Sec 18-143-33

Over Temp NW cor sec. 18 site
E and run S $2^{\circ}15'E$

parallel with Trwp. Road on W $\frac{1}{4}$ line of Sec 18

as this Temp corner comes about 8 ft W of The corner set by Hubbard Co. Surveyor but in running South parallel to Trwp road $\frac{1}{4}$ mile E. my line would cross Wilcox line about 150 ft S of cor. Which gives the other man the Trees. so Judkins says that is all he wants to know. We go back to Judkins where I only charge him \$20.00 as he lost the Trees & we did not do much work.

Judkins gives me two
Treasure Check Viz

Kansas City Mo.

No 75912704

Treasurer of the United States

F. 63 1952

Pay to Order of Flue E Judkins \$10.80 For Jan
For use of Douglas D. Judkins 475-07-8752-C

No 75912703

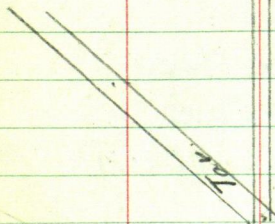
300162 To Grace L. Judkins 10.80
Old age SV ins 475-07 8752-13

+ \$5 bill home @ 6 o'clock.

52

5-

see pg. 48 this book,



1162.20 / 4 1/4

72° 15'

1194.6

Parke @ LaPorte Minn Hubbard Co.
Wants plat showing Location of
buildings to get a Vet. Loan.
Fred Nicles & I drive to LaPorte

Turner point with West side of
Street on Southerly edge of tar road
13.21 ft South of $\frac{1}{2}$ of tar called
Sta ① run NWesterly along edge of
tar road to point 13.21 ft southerly
from $\frac{1}{2}$ and 352 feet from Sta ① =
Sta ②

Turner 352 being Sta 2 site on Sta 1
using this line as a base

Take Location of buildings

Tolit bears R. or southerly

The NE cor bears $68^{\circ}18' R$, 138.45 ft

The NW cor " $70^{\circ}05' R$ 132.3 ft

" SW " " $70^{\circ}54' R$, 135 ft

Size 4 X 5.6 ft.

Garage corrugated tin size 14 X 23 ft

SW cor. bears $68^{\circ}17' R$, 169.2 ft

NW " " $66^{\circ}40' R$, 158.1 "

NE " " $59.33' R$, 168.4 +

54 Lot in

(2) Laporte
Minn.

House

- ④ SW cor. bears R. $53^{\circ}31'$ - 115.6 ft
 ⑤ SW " " R. $52^{\circ}40'$ - 110.7 "
 NW " " R. $45^{\circ}18'$ - 95.05 -
 porch

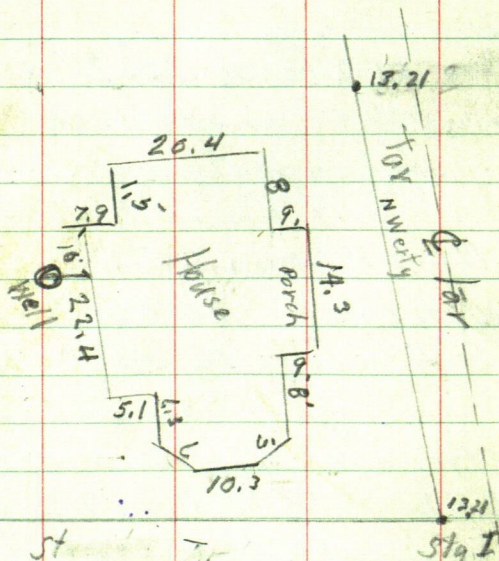
Porch

SW/cor bears R 42°01' - 100.75'

NW "	"	R 38.02	94.95
------	---	---------	-------

E side of door of porch R $34^{\circ}58'101.9$

NE cor. of House bears $R 34^{\circ} 45'$ 118.4



Copy of Letter Parke gave me

James A Wilson
Attorney at Law
Lindquist Building
Park Rapids Minn.

County Attorney
Hubbard County
Telephone 110

Mr. William V Parke Jr.

Laporte, Minn.

Sqty 29-1952

Dear Mr Parke

I have now been advised that the abstract will be satisfactory and I have advised Mr. Fenley's attorney to write to Mr. Fenley to have the deed sent here

It appears that about the only thing remaining to be done now is to comply with the requirement of the Veterans Administration with regards to having a survey of the property made. The V.A. requires that either you or I get a surveyor to furnish us with a sketch showing lot boundaries and location of improvements with reference thereto. The Surveyor certificate should include 1. Statement that improvements are within boundaries 2. Whether or not any violation of building restrictions 3. Whether or not any encroachments. 4. Whether or not any visible repairs or improvements accomplished within past 90 days 5. Name of Person in possession (other than record owner)

and by what right they are in possession

I thought of having Mr. E. M. Wilsie of Park Rapids, the Hubbard County Surveyor make this survey but it is a pretty good distance up there and the thought ~~never~~ occurred to me that you might have some other surveyor lined up to do this. Please let me know about this survey matter

Yours very truly
James A. Wilson

This is a copy of the letter W. V. Parke Jr. gave to me.

~~Dec. 4th 1952~~

~~Ernest Jahnke comes in looking for his tools for his chain saw they had left them in the back end of my car. He pays me the Bal he owes me for the surveying.~~

~~I write another description for~~

378

Ties

8" Tank SW 48.1
12" WP East 29.8
10" Tank SE 34.0

Ties

12" NP West 221.5
12" NP SW 184.5

N.P. stump NW 42.6
10" Birch SW 106

MC 69

16' 7" 1/4

16" NP

100 221.5

200

200

Lot 7

Lot 6

E. Boundary Lot 6 Sec 12 - 141.34

1323.5

1323.5

MC 70

1" Popl NE 25
4" P. 3 SE 3.9

1901.2'

NP P. NW 53.5
JP 8 NE 47.6

7

E.B. Miller Feb 8. 1929

Albert E Wangles & Dessie V
to

Oliver A Berthiaume & Agnes M.

Commencing at M.C. 69, thence
extending S along and upon the East
Boundary line of said sec. to a
point on sec. line 585.5 ft S
of said M.C.

Thence West at 90° to west line of
State Aid Road N^o 7, as now laid out
and established as a point of beg. of the
land to be hereby conveyed thence
S. along, and upon, said W. bdy. line of
said State Aid Road a distance of 200
ft. Thence West at 90° and parallel
with the S. bdy. line of said Gov't lot
N^o 7 extend to the shore line or water
edge of Upper Bottle Lake thence extending
in a Northerly direction along
said lake shore or water edge of said
Bottle Lake to a point directly West of
point of beg.

Wilcox Park Rapids
Surveyed this

Wangler to George H Marking
and Jeanette M.

That Part of Gov't Lot 7 Sec 12-

Twp 141- Rge. 34 described as follows
to wit: Beg at MCN=69 and extending
South along the Sec line 585.5
feet. to an iron pipe, thence extend
West 221.5 ft. to a 16" N.P. tree +
thence still west approx 100 ft
to the shore line of Upper Bottle Lake
thence N.E. along the shore line
of said Bottle Lake approx 667 ft
to pt of beg.

$$\begin{array}{r} 63 \\ 56 \\ \hline 7 \end{array}$$

$$\begin{array}{r} 38 \\ 12 \\ \hline 26 \end{array}$$

June 8-1954

Bob - Don & I to Bottle Lake
Hubbard County Lot 7 Sec 12-141-34
From BT shown on page 58 of this
book I set the True point for $\frac{1}{4}$ Cor
by flat chain from face of Both
trees We then go North to MC 69
I M which check close with B.T. as
shown on page 58 of this book
work True line between MC No 69
and $\frac{1}{4}$ Cor and set 60' spike in
tar road South of $\frac{1}{4}$

from 60' spike in tar road chain
down hill plumb bob chain

@ 226.25 point for $\frac{1}{4}$
from 60' spike in tar chain N 26.25'
set 60' spike inside of Road fill
5.80' W of wedge of tar and 200 ft S
of $\frac{1}{4}$ Cor.

True said hub site Non true line
Turn L 90° and run West. 360. +
10.6 hub ^{370.6} 60' spike + 38 + 14 + 11 = 433.6
60' spike on Lake Shore 17 ft from water
edge and 11.3' from left angle iron

Martin Hagan A.Hy.

Comm. at $\frac{1}{4}$ IM 585.5 S of MC 69
 pt of beg. thence westerly from pt of
 beg. of land to be conveyed
 thence extending Westerly angle
 of $106^{\circ} 40'$ a distance of 221.5- to a pt
 N. of a certain N.P. tree from said
 pt. run due west to pt on Meander
 line of Upper Bottle Lake said E & W
 line being the S. bld line of that
 tract described in Book 90 of Records
 on Page 227

thence SWly along said Meander
 line at an interior angle of
 $91^{\circ} 45'$ a dist of 100 ft thence
 deflecting to the R. $5^{\circ} 55'$ on M line
 100 ft thence SEly at an int angle
 of 90° a distance of approx 397 ft
 from M line to E line of sec 12
 thence at an interior angle of
 $66^{\circ} 40'$ to the pt of beg.

438.9
146.2
585.1

130
38
1462

2489
190
4389

63

June 9, 1954

Gert - John - Ed & I drive to
Lot 7 Sec. 12 - 141 - 34 on Bottle
Lake Hubbard County

Ed & I beg. at hut - 60' spike
on top N of E 1/4 Cor sec 12 chain
N down hill @ $190 + 248.9 =$
 438.9 - I M $3/4$ " on bank $25 \pm$
from water edge of Upper Bottle Lake
 $1.50 - 3.8 = 146.2$ S from 60' spike
on top making it = 585.1 my chain
from MC No 69 to true pt for $1/4$ E side
Sec. 12.

Over True pt for $1/4$ site Non flag on
true E line sec. 12 the E of 16" N.P.
bears N $72^{\circ}09'W$ 221.5'

I M North of N.P. bears N $71^{\circ}28'W$
162.6 min. + 60. - 1.55'

$\frac{60}{222.6 - 1.55 = 221.05}$ to top of I M North of N.P.
 228.25
+ 7.2 - 60' spike but wedge of path.

$228.25 + 76.4 = 304.65$ - spike on
shore $25 \pm$ from water edge at pt 6 ft E of
top of sea wall.

N.P. which description for Tract
 No 1 calls W on its S. boundary line
 bears $N 72^{\circ} 09' W$ - I.M. No of NP
 bears $N 71^{\circ} 28' W$ - $0^{\circ} 41'$ angle between
 the two points

$0^{\circ} 41'$

sine .011926

cosine 999929

hub. on top by path = $228.25 = 228.23 W$
 on a line through \odot NP and goes
 $S 2.72'$ to be on line from $\frac{1}{4}$ through \odot
 NP

hub on shore chained 304.65 is $304.63 W$
 on line through \odot N.P. and goes $S. 3.63'$
 to be on a line through \odot of N.P. from $\frac{1}{4}$ Cor.

at 228.25 we correct this spike and set
 spike on line $2.35'$ W $\frac{1}{4}$ from N.P.

Tower corrected hub 304.65 BS

$S 72^{\circ} 09' E$ on corrected hub 228.65

+ run. $S 18^{\circ} 14' W$ 100 ft to 60 ft

Sta 1 on lake shore about 25 ft from
 Lake

Tower Sta 1 BS N $18^{\circ}14'E$ + run
 S $27^{\circ}06'W$ - 100 ft to Sta 2 W 12 P.
 Trs N.P. 6 N 5.3 NP5 NW 13.2 NP5 NE 3.4

1.3-5. and about .40 W of old stake hole with ^{stick} _{mat}

Tower Sta 2 BS. N $27^{\circ}06'E$ + run -
 S $32^{\circ}05'W$ 127.9 to 60' spike
 which we set yesterday on our line
 we ran at a 90° angle from the E
 line of Sta 12. from a point 200 ft
 S of $\frac{1}{4}$ Cor.

$$\begin{array}{r} 200 \\ - 90.62 \\ \hline 109.38 \end{array}$$

109.38 N of 200 ft pt

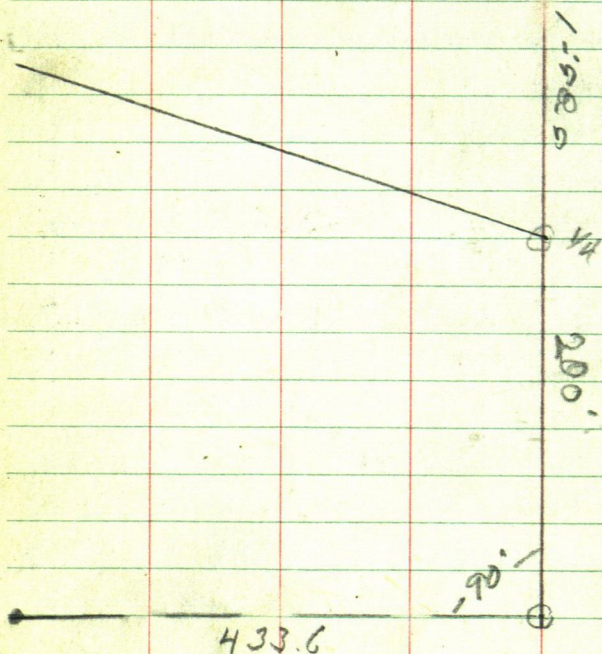
$$366.82 \text{ W } \sqrt{109.38^2 + 29818.44} = 16036'$$

$$16036'$$

$$\text{Sine } 285.688 \times 382.77 = 109,35'$$

$$\text{Cosine } 958323 \text{ into } 366.82 = 382.77$$

$$\text{Tangl } 298113 \times 366.82 = 109,35'$$



$N 73^{\circ} 24' W 33'$

Sine 958323 into $33 = 34.44 W$

Cosine $285688 \times 34.44 = 9.84 N$

$N 73^{\circ} 24' W$

collected 585' in Reef
585' 1 in 4 ch

North

$N 72^{\circ} 09' W 304.65$

1.6 Acres $\frac{1}{4}$

366.82

$16^{\circ} 36'$

$N 73^{\circ} 24' W$

433.6
West

1134' \rightarrow 90°

108.38

5200

$N 93.38' ft$
 $W 289.98$

$S 1.60$
 $W 321.27$

$S 90.62$
 $W 306.82$

$S 32.05' W$
 127.9

$S 27.00' W$
 $100'$

$S 18.00' W$
 $100'$

Shore line Bottle Lake Lot 7-Sec 12
141-34 - from MC 69 S.W.

⁶⁹
Tower MC S. to S. on true E. Sec.
line run N 30.5° to shore line

Tower 30.5° BS S + run,
S 48° 55' W 200 to sta (2)

Tower 200 BS N 48° 55' E
shore line N 66° E 32.

S 39° 30' E 20

S 57° 45' E 45' L

S 19° W 135' L

S 17° W 146' L

S 16° 30' W 160' L

S 17° 45' W 190' L

S 19° 10' W 218' L

S 21° 30' W 236' L

S 23° W 247' L

S 23° 35' W 262' L

S 23° 15' W 280' L

S 24° 18' W 309' L

S 25° 30' W 353' L

S 25° 05' W 371' L

S 25° 20' W 394'

371
14
353

415-
21
394

71

S24°20'W 403
S24°W 415-

See book 78 pg, 108

Received a letter from B & M. Realty Co
706 Empire Bank Bldg. 360 Robert St
St Paul 1 Minnesota Nov. 23-1954
as follows.

We have the following described property
which has been deeded to us on Nov 6 1954
Kindly survey the property for us as soon as
possible and furnish us with a blue print
with our property properly marked and also
iron stakes and a copy of the survey so that
we could distinguish the boundary lines
quickly.

That part of lots 3 & 4 Sec 9-142-31 lying
East of the Great Northern Railroad right-
of-way and North and West of the following
described lines. Commencing at a point
Northwesterly along the lake shore of L L a
distance of 850 feet to an I.M. thence $N 44^{\circ}$
 W 329 feet to an I.M. thence $E 30^{\circ}$ North 500'
to an I.M. (Note being place of beginning)
thence $W 30^{\circ} S$ 300 ft to I.M. thence $S 44^{\circ} E$
22.10 ft to pt in $\frac{1}{2}$ of present roadway and
running along $\frac{1}{2}$ of said road as follows
 $N 81^{\circ} 47' W$ 239.87 ft. $S 37^{\circ} 53' W$ 215.10 ft.
 $S 25^{\circ} 35' W$ 143.10 ft. $S 15^{\circ} 40' W$ 132.35 ft. $S 30^{\circ} 24'$
 W 144.65 ft. $S 18^{\circ} E$ 136.35 ft.

S. $35^{\circ}04'E$ 182.65 ft S $17^{\circ}51'W$ 42.40 \pm
 to the right-of-way of G.N.R.R. together
 with permanent easement or right-of-way
 reserved for road purposes and as a
 means of egress & ingress to the property
 above described through that part of
 Lot lots 3 & 4 - Sec 9 - 142 - 31 owned by the
 grantors named herein: said roadway
 to traverse path presently followed by
 the road constructed in the fall of 1946
 more particularly described as follows
 An Easement for ingress and egress
 purposes over and across the roadway
 as presently constructed, said easement
 being 20 ft in width and being 10 ft
 on each side of the after described line
 beg. at a pt in $\frac{1}{2}$ of present road 22.10
 ft S $44^{\circ}E$ from the NW corner of the above
 described tract of land and running along
 the $\frac{1}{2}$ of said road as follows, N $81^{\circ}47'W$
 239.87' S $37^{\circ}53'W$ 215.10' S $25^{\circ}35'W$ 143.10
 S $15^{\circ}40'W$ 132.35 S $30^{\circ}24'W$ 144.65 S $18^{\circ}E$
 136.35 S $35^{\circ}04'W$ 182.65 S $17^{\circ}51'W$ 42.4
 to the right of way of G.N.R.R.

Kindly send the statement to us

W. Remon

Mary Ann Milton

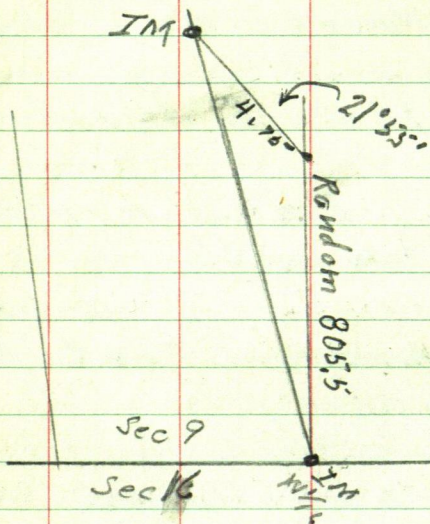
March 28th 1955 I drive to sec 9
and look for IM snow two days
March 30 drive to sec 9 find
W 1/4 S side sec 9.

April 1. 1955 I drive to Sec
9 Tower W 1/4 site. W on about
the line turn. R. $53^{\circ}25'$ rough and
open up a triangle. W 1/4 line sec 9
try and find the IM set by
Heast. I find the IM, which sets
a few feet W of my line

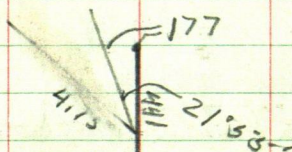
Friday no school for 10 days
April 8-1955

I take Ed. and we drive to W 1/4 IM
S side sec 9. 142-31 set flag at IM
walk North on W 1/4 line Try and
work T on line between the 2 IMs
but big Nor. Pine so Will have to run
a random and correct it to save
N.P. beg at 1/4 S side sec 9 chain N
on random W 1/4 line @ $59 \pm$ & trust @ 300
pin @ 600 pin @ 613.4 hub 60' split to be
corrected @ 603.5 hub Tower 603.5
IM 1/4 cor. sets NW on L $21^{\circ}55'$ - 4.75 ft

We go to office to figure the corrections



803.5

$$\begin{array}{r} 441 \\ \hline 80791 \end{array}$$


21°55'

 $\sin 21^\circ 55' \times 4.75 = 1.77$
 $\cos 21^\circ 55' \times 4.75 = 4.41$

803.5

$$\begin{array}{r} 441 \\ 796 \\ \hline 3296 \end{array}$$

$$1.77 \div 807.91 = .002190838 \text{ OK: } 0^{\circ}07'$$

Sine 002036

Cosine 999998 into 807.91 =

Tang. 002036

Hub 613.4 N goes W 1.34 to line

Horst record in Record Book B page 524 gives this distance as 806.65 my chain is 807.91 = 1.26 different
P.M.

Turn IM Center SW $\frac{1}{4}$ Sec 9 B55 on corrected hub 613.4 and run Non true W $\frac{1}{4}$ line

Sat Apr 9-55

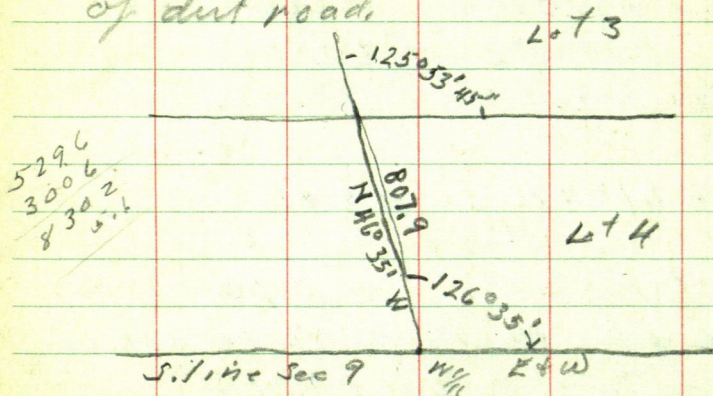
Edt I and I lost my reading glass yesterday I got two new ones at Barkers put one in car.

Turn IM Center SW $\frac{1}{4}$ site south turn $54^{\circ}06'15''$ L according to Horst's notes run E on S $\frac{1}{4}$ line @ 300 pin + 120 = 420 wedge of tar road 371 + 30 = 450 E edge of tar road 371 + 79.6 = 529.6 hub 66th spike N shoulder of dirt road 1.8 N of edge of dirt

Monday April 16, 1955

Ed and I to Sec. 9-142-31

Tower hub 529.6 on N shoulder
of dirt road.



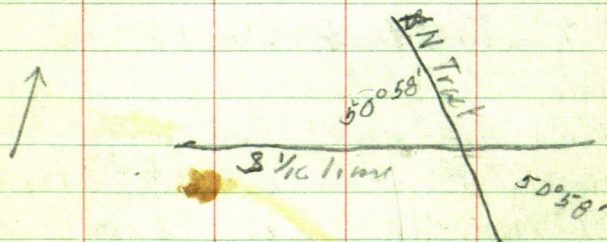
126°35'

90°

46°35'

Tower E rail of MNRR

Site W on S 1/4 line railroad track E
rail runs Vir @ 00 NW angle
50°58'



529.6 + 300.6 = 830.2 center of E rail
+ 516 = 835.8 = 60' from hub

Erail S 50° 58' E 198.6

Turner 198.6 B.S. 50° 58' ^N along rail
leg of curve.

Sta 1 -	51° 15'	deflect	0° 17'
+ 50	51° 37'	"	0° 39'
Sta 2 -	51° 59'	"	1° 01'
+ 50	52° 27'		1° 29'
Sta 3 -	52° 56'		1° 58'
+ 50	53° 24'		2° 28'
Sta 4	53° 55'		2° 57' <
+ 50	54° 22'		3° 24'
Sta 5	54° 51'		3° 53'
+ 50	55° 19'		4° 21'
Sta 6	55° 49'		4° 51'

Center of crossing + 20 - 56° 00' deflect 5° 02'

NW angle of tract with S $\frac{1}{4}$ line
50° 58' = 39° 02'

Tang 776.780 into 100 ft right of way =
128.74. pt for I.M. on S $\frac{1}{4}$ line
from E tract to edge of right of way
along line

1303.48

1/16

1047.82

228.5

53° 25'

126° 35'

807.9 mch.
806.65

2221.7

128.24 128.84

18.74

1250.53
1245.5
Horse's Camp

709.85
0.0710

N. 39° 43' W.
1239.85

54° 47' 30"
Horse's Camp

1248.9

100

14034

From hub 835.8 chain E 119. set
~~stake~~ temp right of way line in bog
 + 300 pins

$$\begin{array}{r} 835.8 \\ + 119. \\ \hline \end{array}$$

$$954.8$$

$$300$$

$$1254.8 \text{ to stake in bog} + 100 = 1354.8$$

$$LV \text{ swp} + 80 - 4.7 =$$

$$\begin{array}{r} 1354.8 \\ 75.3 \\ \hline \end{array} \quad \begin{array}{r} 4.7 \\ 75.3 \\ \hline \end{array}$$

$$1430.1 \text{ hub 609 spike E edge of road}$$

$$180 - 2.7 = 177.3$$

$$177.3$$

$$1607.4 \text{ to hub 16th nail}$$

$$+ 250$$

$$1857.4 \text{ pin} + 91.6$$

$$91.6$$

$$1949.0 \text{ 609 spike first spike for string intersection}$$

Home late get call from
 Chan Hotel

April 23-1955

Go to Chase Hotel meet
who has bought around
500 acres of Indian land on
Leech lake

We go in his car to Whippholt
where we find IM on lake shore
NE & NW corners of Indian Allot.
No. 1537, being the W $\frac{1}{2}$ of NW $\frac{1}{4}$ of
Sec 9-141-29. drive to about the
SW cor. as the IM is in the road
we do not locate it there is a
good fence running East which
he says must be on the E W & sec 9
do not take time to go over this line
back to walker @ 11 AM

I go to Office find note on the
door from Ted. Chalgar who
owns lots 48 & 50 to 60 of interlocken
ledge on Baby lake Will be there
this weekend has to see me.

April 23 - 1955

fig locations of IM in
Sec 9-142-31 as shown
in record in Co. Record book
of surveys Book B page 524
if IM were set as map shows

beg at IM in swp on E W &
as 00 run West corner fig
by me as $S 88^{\circ} 37\frac{1}{2}' W$ 1248.9
distance given in record book
 $S 88^{\circ} 37\frac{1}{2}' W$

$$\text{Sine } 9997125^{\circ} \times 1248.9 = 1248.54 W$$

$$\text{Cosine } 023996^{\circ} \times 1248.9 = 29.97 S$$

so the NW cor Lot 3 - Sec 9 sets
1248.54 W and 29.97 S of IM
in swp

The West line of Lot 3 runs $S 36^{\circ} 25' E$
806.65

$S 36^{\circ} 25' E$

$$\text{Sine } 593653^{\circ} \times 806.65 = 478.87 E$$

$$\text{Cosine } 804721^{\circ} \times 806.65 = 649.13 S$$

S line Lot 3 runs $N 89^{\circ} 18' 45'' E$

$$\text{Sine } 999928^{\circ} \times 2221.7 = 2221.54 E$$

$$\text{Cosine } 101199875^{\circ} \times 2221.7 = 26.64$$

on S line Lot 3,

hub 835.8 = hub on RR tract grade

sin 999928 \times 835.8 = 835.74 E

Cosine, 01199875 \times 835.8 = 10.03

hub. 954.8 = right of way. turn cor

sin 999928 \times 954.8 = 954.73

Cosine, 01199875 \times 954.8 = 11.47

hub 1430.1 = E edge of easement road

sin 999928 \times 1430.1 = 1430.

Cosine, 01199875 \times 1430.1 = 17.16

hub 1607.4

hub 1949. near fence line

sin 999928 \times 1607.4 = 1607.28

Cosine, 01199875 \times 1607.4 = 19.29

IF IMs are set as shown
on page 524 Book B Co record book of
surveys is correct The IM on E & W
in swp sets N 669.07 ft and W
66.07 from hub 835.8 on RR grade
 $66.07 \div 669.07 = .098749 = 5^{\circ}38'30''$

checking

N 5° 38' 30" W

$$\text{Sine } .0983065 \times 672.33 = 66.09$$

$$\text{Cosine } .995156 \text{ into } 669.07 = 672.33$$

$$\text{Tang. } .098785 \times 669.07 = 66.09$$

R.R. Tract runs N 39° 43' W

$$\text{Tang. } .830707 \times 669.07 = 555.8$$

old Notes F.B. 78

pag 124 book 78 says continue

E+W @ 2048.8 wood hub & tack in

@ N.N. R.R. Tract @ 2300 enter sup.

@ 2662.9 set hub & Tack on seawall

10 ft wide @ 2960 Reech Lake

pg. 127 book 78 says from P.T.

of Tract curve chain N on Tract

@ 558.6 end of curve

@ 798.6 S $\frac{1}{16}$ line intersects tract

@ 1648.6 E+W @ " "

@ 3202.6 Sandlot Bridge R.R.

@ 3579.6 N " " " "

@ 4533.6 intersect N line see 9

$$\begin{array}{r} 1281.1 \\ + 1248.9 \\ \hline \end{array}$$

2530.0

Plat in Record Book B pg

524 shows distance from $\frac{1}{4}$ W side
sec 9 to I M in swp as 2530.0

Horst's notes say cross tract @
2048.8 leaving I.M. 481.2 ft
E of Tract in swp.

distance along tract old Notes

Cross S $\frac{1}{4}$ line @ 798.6

Cross E & W @ 1648.6 leaving dist.
from S $\frac{1}{4}$ to E & W @ along Tract

1648.6

798.6

$$\hline 850.0$$

will check this rough

to try + find I M in swp.

$$2048.8 = \text{E. Tract}$$

$$\begin{array}{r} 1281.1 \\ 767.7 \\ \hline \end{array}$$

$$1248.9$$

$$767.7$$

$$\hline 481.2$$

Sunday April 24-1955

Ed. John - Bob & I drive to Sec 9
142-31' chain along S N R R
Tract from where S $\frac{1}{4}$ line crosses
the tract Northerly along tract
850 ft set flag as there is an old
fence running E we follow it
to the lake looking for IM, do
not find any from where the
fence enters lake we open
up the line along the old fence
West to the P.R. Tract the
fence seems to hit the tract
about 8 ft S of the flag at 850
PM

Gene & I go to show

Jack A Gleason

hub on S $\frac{1}{4}$ line at fence
1949 E goes E 2 ft to 1951 to
be on line between the two IM
on Leech Lake Lodge's SW line

Monday

as we can not set spring instrument
of property line of Leech Lake Resort
with S $\frac{1}{2}$ line because of big trees
on property line we set

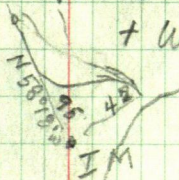
Tower but on S $\frac{1}{2}$ line 1949 E of NW
Cor lot 4 sec. 9 BS S 89° 18' 45" W
and run N 38° 50' W on property corner
by easement road 160 + 48.7 = 208.7

IM on shore 800 + ft NW from S E Cor
bears S 40° 19' 30" E 120.6

Tower corner of Resort property
BS S 38° 50' E run N 65° 25' E to IM
on bank of Leech Lake 20 ft from water

Tower IM NE Cor. Resort take shore
line Run N 0° W H 2 ft point

From IM run N 58° 18' W 190.6
10 ft from bank + Water 25



Tower 190.6 take rough stake of
bank 30 ft from water

140	N 24° W	200	N 26° 30' W
290	N 34° 30' W	320	N N 43° 20' W
325	N 51° 02' W	50	from water

Tower 325.1 BS $351^{\circ}02'E$
and run S $81^{\circ}48'W$ 264.8
Water 60 R.

Tower 264.8 BS N $81^{\circ}48'E$
run

100'	S $60^{\circ}15'W$	Lat 30
130	S $68^{\circ}40'W$	" 10
330	S $58^{\circ}0'W$	
320	S $59^{\circ}30'W$	
350	S $40^{\circ}30'W$	
180	S $27^{\circ}15'W$	
105	S $19^{\circ}30'W$	
170	S $15^{\circ}20'E$	
250	S $9^{\circ}E$	
290	S $0^{\circ}30'E$	
410	$4^{\circ}10'W$	

April 28- work in
Office on old & new notes

Fig. from NE cor of property
IM run N $38^{\circ}18'W$ 190.6
to pt from 190.6 run N $37^{\circ}02'W$
325.1. from this point run
N $88^{\circ}57'W$ 1003 about 1085 ft
we should hit the IM set in swamp

$$\begin{array}{r} 90 \\ 1.35 \\ \hline 88.65 \\ \hline 000 \end{array}$$

$$\begin{array}{r} 7173 \\ 1826 \\ \hline 8077 \end{array}$$

91

by Horst.

April 29-1955

with this information I drive to Leech Lake Lodge. to see how things will check out.

NG

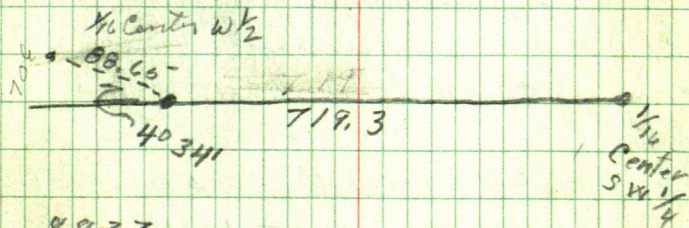
We go to $\frac{1}{4}$ Center SW $\frac{1}{4}$ hold flag at I.M. pack π N over our old cut out line set π up on our random line. Sit. on flag. S I.M. Center W $\frac{1}{2}$ Sec 9 bears R or $E 4^{\circ}34' - 88.65$

but under π is 719.3 from flag at I.M.

40341

$$\text{Sine } 079619 \times 88.65 = 706$$

$$\text{Cosine } 996802 \times 88.65 = 88.37$$



$$\begin{array}{r} 88.37 \\ 719.3 \\ \hline 807.67 \end{array} \quad \begin{array}{r} .008741193 \\ \hline 7.06.00 \end{array}$$

hub: 719.3 N goes $E 6.29$ to W $\frac{1}{4}$ line

Turn IM $\frac{1}{4}$ center W $\frac{1}{2}$ site
 son corrected h46 719.3 and
 Turn L $54^{\circ}47'30''$ and run W on
 E & W $\frac{1}{2}$ Sec. 9.

April 30 - 1955 Sat

Edt I to E W $\frac{1}{2}$ sec 9

Turn hut on E shoulder of
 RR tract grade. Site W on IM
 angle of railroad tract NW angle
 $51^{\circ}36'$

Horst measurement to $\frac{1}{2}$ of track
 is 2048.8 as his measurement have
 proved to be about 2 ft off on all his measurements
 and as I do not want to chain across gap
 from $\frac{1}{4}$ IM on E W $\frac{1}{2}$ I am going to use
 his measurement using the E rail instead
 of $\frac{1}{2}$ for his measurement.

using E rail as 2048.8, E @ +6.8 ft
 = hub

Tract angle with E W $\frac{1}{2}$ = $51^{\circ}36'$

$\sin 783693 \text{ into } 100 = 127.6$

$\cos 621248$

as RR has 100 ft of Right-of-way
 We will have to chain 127.6 along

3
 1296

E + W Φ from Φ tract to get 100 ft

6.1 bet Rail along line or 3 ft to Entry
or 124.6 from E rail not quite but
for IM right of way line sweep about
75 ft R. From R of W cor. + 200
sweep 15 ft R. Sweep about 10 ft R to
250 then land low boggy L to seawall
about 75 ft.

$300 + 170 - 2.9 = 470 - 2.9 = 467.1$
but on top of seawall 20 ft to Beach
Lake 20 ft W along line to sweep
seawall about 40 ft wide

481

477.

54

check

2048.8 Φ

127.6 edge of R of W

300.0 run

167.1 seawall

2643.5

This to IM on seawall

W. Oak 14 N about 85 W 19.1

W Oak 10 S " 40 W 9.66

May 3 - 1955

I drive to Inguadona Lodge
on Inguadona Lake Town I'm
on Leech Lake Ind Res. line
where same intersect the West
line of Sec 32 - Sit. N on Kcor
between Sec 31-32 it starts
to rain hard and as the wind
is blowing heavy we decide to
wait drive back to Walker
work in Office on map of
Dan Waller's property is
Sec 28-142-31 until 5 PM
drive home pick up Ed. and
drive to Sec 9-142-31
from IM center of the $W\frac{1}{2}$
Sec 9 we chain across
swpr. E on E & W E Sec 9
@ 476.10 spike hub on W shoulder
of road @ 480 wedge of tan road
+ 35 = 515 E edge of tan @ 520
pin + 247.2 = 767.2 E rail of
R.R. Tract

Pinecone Resort

29.1/2" 96

James W. Buntan

Sunday May, 8th 1955

Don & I drive to Pinecone Resort
Tower hub on West shoulder of road
476.10 ft E of I.M. 1/4 Center W 1/2
Sec 9. Site W on I.M. ^{102.80} run. N

760 ft to split in Pinecone road
Site S 88° 37 1/2' W and run N 39° 03' W
760. ft.

Tower 760. run ~~N~~ New road bears
about S 50° W - run along old road

S 78° 29' W 296.8

Tower 760 run N 39° 11' W 630.14 to
iron plat on Bridge to be used as B.M.

Tower 296.8 run. S 46° 08' W 263.5 to
SE end of canal

B.M.	H.I.	rod	Clv.	T.P.	
100	102.45	2.45	89.16	13.8X	93.8
		4.65	4.65		6.9
	93.8		93.8		86.9

dump ground

6.9 86.9
3.2 87.6
7.55 high water
8.25 "

8.0

Low "

in w.p.

HI

93.8

Elv

rod

74

water

bog

87.85 - 5.95

E. end

87.75 - 6.05

87.6 6.20

93.8

5.95

87.85

93.8

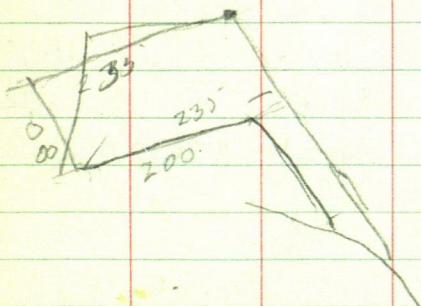
93.8

6.2

6.05

87.6

87.75



Leech Lake Resort see Next page 97
Jack Gleason Harbor

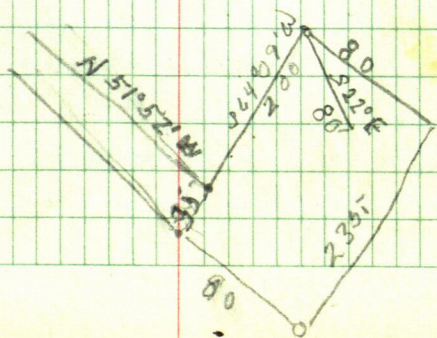
Tower hut on shore line see page 89
it says Tower IM NE cor of Leech Lake
Resort 20 ft from water take shore line
From IM run $N 58^{\circ} 18' W$ 190.6 - 10 ft Brk
water 20 - Sta ①

Tower 190.6 run $N 51^{\circ} 02' W$ 325.1 = Sta ②
Tower 325.1 run $S 81^{\circ} 48' W$ 264.8 = Sta 3
60 ft from water

to-day Oct 2nd 1953 -
Ed + I Tower Sta 3 - BS $N 81^{\circ} 48' E$
on Sta 2. and run.

B.M. 60' spike at base of 14' oak
spike head in W.O. $14 N 4^{\circ} 47' E$ 24.4
run S. $5^{\circ} 18' W$ 161.5 to NE cor Harbor

Tower 161.5 run $S 64^{\circ} 09' W$ - 200 ft + 50
along Northerly side of harbor 200 ft
Tower 200 run $N 51^{\circ} 52' W$ 300 ft
NE side of canal 35 ft wide



Leech Lake Lodge

Jack Gleason

Jack want to put in a harbor
and canal

I go with Ed to Office to get this
Field book as it is not in Index
Book have a hard time finding it

Sunday Sept. 25th 1955

check old notes on page 90-91
from I.M. NE cor Leech Lake Lodge

From I.M. run N $58^{\circ}18'W$ 190.6 Sta (1)

Then 190.6 run N $51^{\circ}02'W$ 325.1 " (2)

Then (2) 325.1 run S $81^{\circ}48'W$ 264.8 " (3)

as we will try and work from
Sta 3 - See page 90 This book

$$\begin{array}{r} 103.4 \\ 195 \\ \hline 101.45 \end{array}$$

170
9.5
161.5

12
47

99

@ 264.8

BM. ass 100' HI 103.4

present water mark Rod reads 9.4

N 86°30' W 70

High Water 42 ft rod reads 7.7

Bank S 49°30' W " " 5.1

S 5°18' W at edge of surp. 5.85

TP spike in road 5.70

Town NE Cor of Harbor Rod at TP reads 1.96

HI 101.45

NW Cor harbor rod reads 4.09

SW Cor " " " 4.20

Center " " 3.90

SE Cor " " " 4.40

Out from NE Cor " " 4.50

use ^{NW Cor harbor} ~~same~~ TP max T rod read 2.82

Town NE Cor canal rod at TP read 63.50

at 120 ft from T rod read 4.70

water Present rod reads 6.75

Toe of seawall 5.10

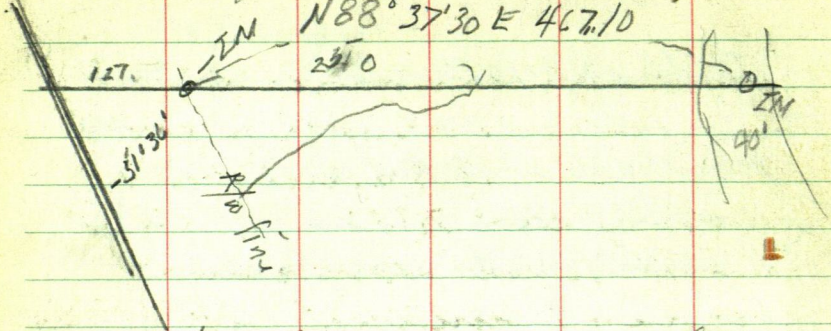
Top of seawall 3.4

Center of Canal ~~read~~ 5.3

100

May 20 - 1954 Sunday

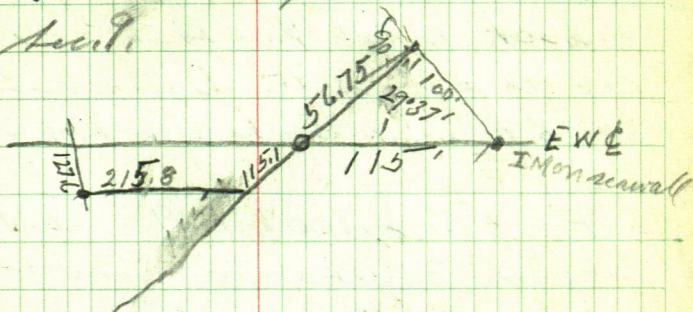
N 88° 37' 30" E 467.10



Ed & I to court house get their
book check figures on angle.
Pick up Cust. Bjørke call
Jack Gleason he is on his way
to town we wait for him Wednesday
to E & W & Sec 9 - walk
in to IM on E & W & at intersection
of E right of way line of IM R.R.
Towers IM side E on IM on seawall
Turn R 51° 36' and run parallel
with R.R. track 127.6' to apt for IM
on R of W line 100 ft S at 90° to
E & W & Sec. 9 being SW cor of track
being surveyed

Towers said SW cor run E parallel
to and 100 ft S of said E & W & Sec. 9
It to intersect with a line
run as follows

beg at I Mon seawall on E & W &
 run northerly along the seawall
 N ft to a point then a
 Tower said point S. T. S on IM
 Turn 90° to about along seawall
 and run to intersect with a line
 106 ft South and parallel with E &
 W & Sec. 9.



No pay

Hubbard County

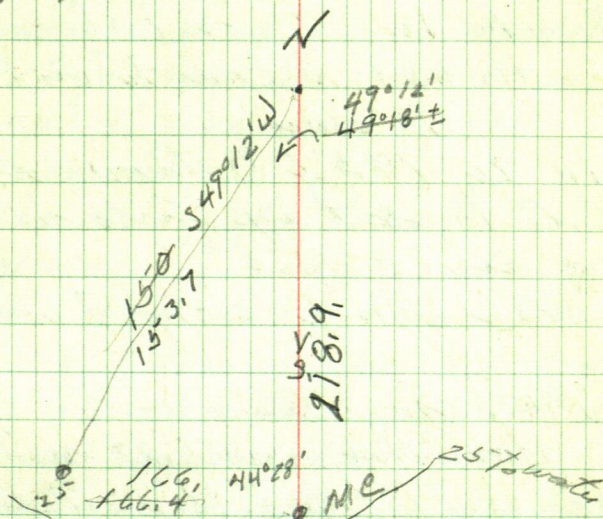
Benedict Lake Lot 1 Sec 2-142-32

as I surveyed a tract of land in
 Lot ~~9~~ about a year ago and wrote
 out the description for the owner of
 Lots 1-8 & 9 Sec 2-142-32

They had a big fire and lost everything
 and wants me to write out a new
 description from my field notes as I
 did not index the book I used I
 can go and get the information I
 need quicker than I can check my
 books.

Ed + I drive to lot 9 Sec 2-142-32
 From $\frac{1}{4}$ Corner bet Secs 1 + 2
 chain South along Sec. line bet Sec
 1 + 2 a distance of 58 ft to a nail
 in roots of a pine tree being NE
 corner of a tract of land already sold
 from said nail ran S $52^{\circ}55'W$
 130.5 ft to pt being SE corner of
 Tract being surveyed and place of beginning
 Continue S $52^{\circ}55'W$, 150 + 240 + 109.5 +
 499.5 to IM + 5 = 500 ft to wood stake
 from wood stake on bank 15 ft from water
 run N $34^{\circ}22'W$ along bank 150 ft to
 pt on bank. Thence N $52^{\circ}55'E$ parallel
 to first line 300 ft to pt thence S $34^{\circ}22'E$
 150 ft to place of beg.

I re write the description for
 Art Peterson Attorney who is fixing
 the papers



From MC SW cor to 9 sec 2-142-32
 run N 218.9 to I.M. Tower 218.9
 site S on MC and run
 Tree on line

Tower MC site North turn $\angle 44^\circ 28'$

A Gendreau
 Benedict Main

$\angle 68^\circ 1'$
 $\angle 68^\circ 1'$

104

G.L. Dosland
Hubbard County
July, 20-1956

on page 31 this book shows
where I started work in Sec.
32 -143-32 I surveyed
out lots 1 and 2 on Kabekonna
Lake Hubbard County in 1952
to day

July 20-1956 they want
the lots cut up into several
tract and platted

I told Mr. Dosland I would
mark the lines along the road
for \$50. some time ago

Now they want it made
into a plat. which will be
different I told one of the bunch
I could not do it for less than
\$150. here is a copy of letter

G.L. Dosland
Attorney and Counsellor at law
Suite 5-6-7

First National Bank Bldg.
Moorhead Minn

July 20-1956

Mr Harold Curo
County Surveyor
Walker Minn

Dear Mr. Caro

This will confirm your conversation with Mr. Sigurd Mundhjelld of our group relative to preparing the plat of our Kakekoma property for filing with the Recd of Deeds

We understand that it will be necessary for you to put a stake at the road as well as at the lake frontage and figure acreage of the 5 lots and that you will do this and prepare the plat ready for filing for the sum of \$150. This is agreeable with our group and we would appreciate if you could expedite the preparation of this plat as several of the boys wish to build but don't want to start until the line is established and they have a deed to the property

As I wrote you in my last letter Mr. Peterson will issue the plat and then issue Deeds by lots No. 50 so the boys cannot

begin to build until you have
been able to complete the plot
and we will all very much
appreciate if you can hurry this
along as much as possible

Very truly yours
G. L. Dosland,

Aug. 9-1954 I get this
book and Ed + I go to Kokokoma
Lake

old notes page 44 this book says
we set a 1X40" IM for true. W $\frac{1}{4}$ corner S side
sec. 32 and run N parallel to West line of
Sec 32 @ 133.05 we set an 1X36" IM,
@ 166.3 set a 60° spike in E road
@ 199.55 set a 2X30" IM @ 281.8 set 60°
spike @ 381.4 we set a 1X36" IM on brink
@ 420.1 we set a 1X36" IM on seawall
10 ft south of water edge.

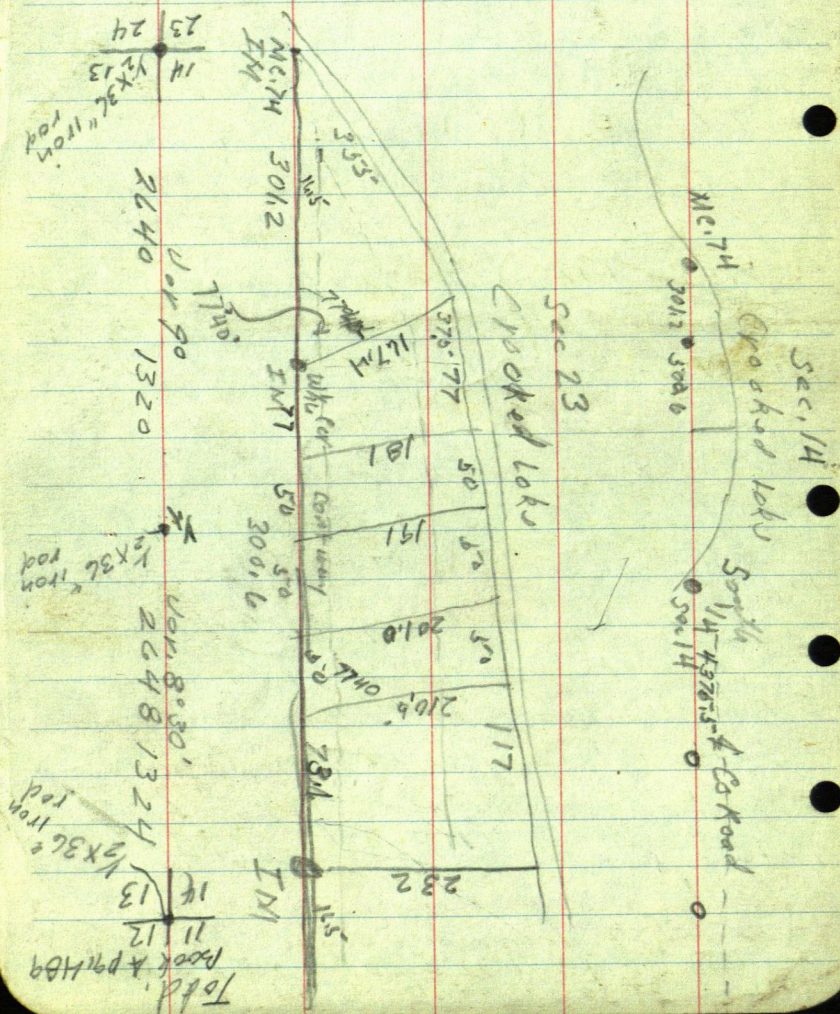
We find all the IM along this line
and look for 60° spike seems to be gone
old Notes page 44 says Tower hub 166.3
N of W $\frac{1}{4}$ cor run E road with stake
use W $\frac{1}{4}$ line as N + S turn S $82^{\circ}46'$ E 680 stake

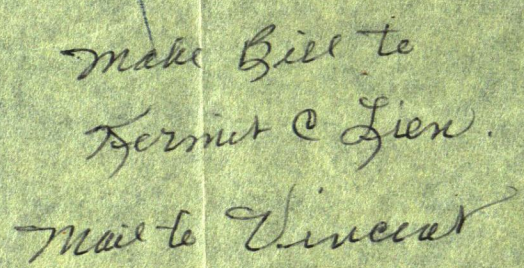
Survey made in Dec. 13-14-141-33 to establish corners & lines for road purposes.

- We go to the cor. to sec. 11-12-13-14-141-33 set by Mar. in 1916 from old Gov't B.T.s and put in new Bearing as follows. NW foundation of School house bears
- $561^{\circ}45'$ E 157.30 ft we then run S on 9° cor at 290 cow trail 400 hub - 660 cow trail NW-SE 800 975 - 1320 hubs at 1350 old road NE-SW 1500 hub
- 1690 fence E+W 1790 enters slough 1740 hub at 1740 triangulate wet slough offset East 100 ft angle $81^{\circ}04'$ Tangent $6375.5 = 100 \times 6375.5 = 6375.5$ ft + 1740 = 2377.50 hub on S bank of slough at 2648 the true $\frac{1}{4}$ cor between 13-14 141-33 bears west 41.50 ft at this $\frac{1}{4}$ cor we cut into the SW Gov't Oak tree which is standing green & marked plain west the true $\frac{1}{4}$ from
- This B.T. drive in a $\frac{1}{2} \times 36"$ iron rod for cor on high knoll with Near B.T. W.P. 12 $S 78^{\circ}15' E 108$. Correct Back. Beg. at $\frac{1}{4}$ + run S on 9° cor. 100 hub 400 long pond 30 ft L 500 hub 1000 hub at 1285 hub 1320 hub 1600 hub 1610 cow path E+W 1800 frog pond
- 1900 L+ frog pond 2060 hub 2500 hub 2640 true cor to sec. $\frac{14}{23} | \frac{13}{24}$ bears west 4 ft. we find old B.T. stump at NW MKD plain west true sec. cor drive in a $\frac{1}{2} \times 36"$ iron rod on S side old RR grade with New B.T.s W.P. 14 $N 71^{\circ}32' E 72$ ft } to Nail heels at. W.P. 20 $S 32^{\circ}15' E 63.50$ } Base of trees

6-16-48

3-24-5-2





50 ±

$$\begin{array}{r} 281.8 \\ 199.5 \\ \hline 82.25 \end{array}$$

$$\begin{array}{r} 199 \quad 381.4 \\ 281.8 \\ \hline 100 \end{array}$$

$$\begin{array}{r} 105 \\ 107 \end{array}$$

showing that the road runs $S 82^{\circ} 46' E$
as I want to cut off the first 100 ft.
of lot 2 N of road

Now I M N of road S, to son I M S of road
and run $S 82^{\circ} 46' E = 7^{\circ} 14'$

Since 125.910

$\cos 99.2042$ into $100 = 100.80$

108
108
108

sec 111-2

360

357°60'

179 41

180 19

89

1780

60

41

X1

220

E+W Tapline

100

1/4

999997

999996

9999913

9999965

2.12.35 99.483.15

2.12.35 99.483.15

2.12.35 99.483.15

2.12.35 99.483.15

2.12.35 99.483.15

2.12.35 99.483.15

2.12.35 99.483.15

2.12.35 99.483.15

2.12.35 99.483.15

2.12.35 99.483.15

2.12.35 99.483.15

2.12.35 99.483.15

2.12.35 99.483.15

2.12.35 99.483.15

2.12.35 99.483.15

2.12.35 99.483.15

2.12.35 99.483.15

2.12.35 99.483.15

2.12.35 99.483.15

2.12.35 99.483.15

2.12.35 99.483.15

2.12.35 99.483.15

2.12.35 99.483.15

2.12.35 99.483.15

2.12.35 99.483.15

2.12.35 99.483.15

2.12.35 99.483.15

2.12.35 99.483.15

2.12.35 99.483.15

go to cor to sec. 29-30-31-32 US Notes call for. Asp. 13 S 8 1/2 W 40.4

" 14 N 13 1/2 W 94

ash 6 N 61 E 58

Can not find them

We go to 1/4 cor bet sec. 29-32 where we find an I.M. set for the 1/4 cor
We mkd New B.Ts NP 12 N 6° 55' W 45.40 ft JP 7 S 80.7° W 67.20
run line west bet sec 29-32 @ 70 W old road NE SW 300 hub 800 hub
offset 8 ft. South to hit old cutting 730 hub 1000 enter meadow NW-SW
1320 W hub 1564 since N+S @ 2100 hub quit for night

Aug 16, 1921 - same crew ^{2325 LV 9.15 ft} ^{2354 W hub} at hub 2100 continue line west @ 2180 E
bank of Crow Wing River NW-SW @ 2729.2 hub in E N+S road @ 2850
enter clover field N+S @ 3300.20 hub @ 3625 W hub clover enter oats @ 3702 hub
@ 3800 W hub oats @ 3925 enter wire grass @ 4336 LV same @ 4385 enter plowed
field @ 5280 hub @ 5300 LV plowed field

Apr. 17 same crew at 5280 we look around for 1/4 bet sec 30-31 US Notes
call for NP 24 N 49 1/2 E 16 BP 12 S 9 W 30 we find roots of both and set true
1/4 cor bet sec. 31-30 from hub 5280 the 1/4 sets N 10° 29' W 146.7 ft

Continue line west @ 6870.9 W hub Temp NW corner 31-140-33
B.Ts gone. We go to 1/4 on Rye line bet sec 31-36 where we find a stone set for
1/4 cor. and the SE B.T. set Mkd New B.Ts JP 8 S 44° 21' E 46
from 1/4 run North on Rye line. 2640 hub @ 2652 N & E+W road
@ 5311.9 true 1/4 bet sec. 25-30 - Temp 140 Rye 33-34 sets W 3 ft

We go to 1/4 cor. bet sec 29-30 - 140-33 where US Notes call for.
Tank 12 S 21 1/2 E 25 - Tank 6 S 29 W 11 we find both

at cor to sec. 29-30-31-32 Mkd. New B.Ts

Elm 13 N 19° 40' E 47.20 ash 8 S 70° E 52.40

Dec 22-1923 Miller runs North from I.M. cor to sec. 29-30-31-32
@ 2455 hub S side river @ 2624 N side @ 2635 N find true 1/4 cor
bet sec. 29-30-140-33 bears East 11.2 ft correct line south & run N
@ 2310 lake shore of 5th @ W lake hunt for MC No 51 but cannot
find anything stop survey. Miller

140-34

2652

2652

140-33

14

N 85° 11' 18" W 4032' E 12.768'

5th Grand Mining

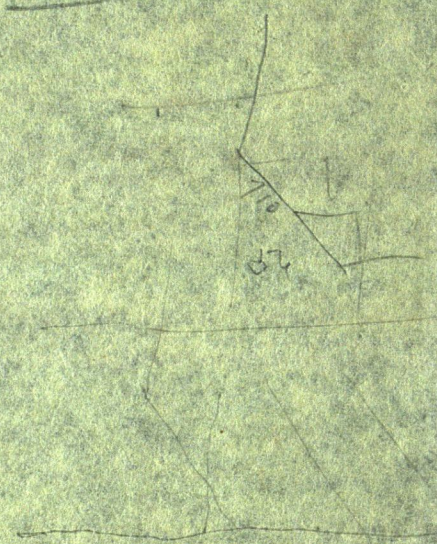
Surveyed by HJC 1921

Page 463 Book A

29



320 - 500
1/3



Sat Aug 11-1956

Ed & I to Kabekona Lake Sec 32-143-32

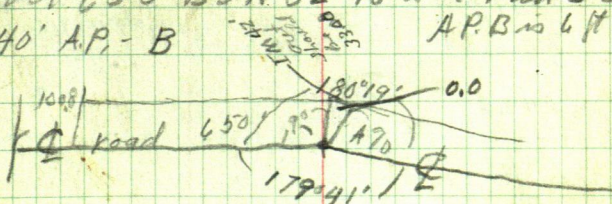
Tower I M on W $\frac{1}{16}$ line on N right of way
line site S on $\frac{1}{16}$ line and set a
50' spike in \angle of road @ 166.3 N of W $\frac{1}{16}$
corner. being 33.25 N of I M on W $\frac{1}{16}$ line
on south right of way line

Tower 50' spike in \angle road site S on W $\frac{1}{16}$ Cor
using W $\frac{1}{16}$ line as N & S. we re-run \angle road
as given in notes on page 44 this book
S $82^{\circ}46'E$ 680 to sta A. in \angle road

Tower A B S N $82^{\circ}46'E$ and run S $82^{\circ}24'E$
469 ft to Sta B.

We can not follow old notes run S $82^{\circ}46'E$
650' chained

Tower 650 B S N $82^{\circ}46'W$ & run S $82^{\circ}24'E$
540' A.P. - B

A.P. B is 6 ft S of \angle 

$$180^{\circ}19' \div 2 = 90^{\circ}09\frac{1}{2}'$$

$$179^{\circ}41' \div 2 = 89^{\circ}50\frac{1}{2}'$$

$$89^{\circ}50\frac{1}{2}'$$

$$\sin 0027685 \times 33 = 0.09 \text{ Long}$$

$$\cos 0027685 \times 33 = 33$$

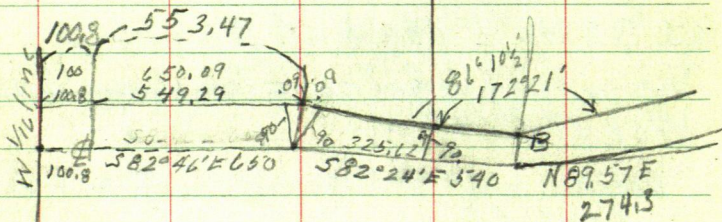
108
110

650.09
100.8
549.29

650.09
100.80

Sta A is 650 ft E of W 1/4 line
angle point on right of way line
N side of road would be 650.09
= 100.8 leaves 549.29 E of E line
of W 100 ft tract

Lower Sta B BS N 82° 24' W on A
run. N 89° 57' E 274.3 to Sta C



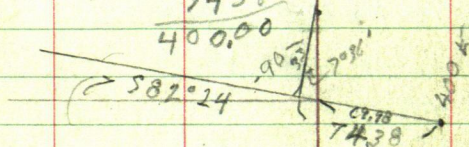
875.19
549.29
325.71
875.00
549.29
549.38
325.62

400
325.62
74.38

74.38
44
69.98

89° 60'
82° 24'
7° 36'

325.62
74.38
400.00



7° 36'

Sine 132256 x 3329 = 4.40

Cosine 991216 into 33.29

$066,834$ 997763
 066564 997752
 1133×18 1995543
 66709 9977725

$2 \overline{) 17950}$ $\begin{smallmatrix} 60 \\ 50 \\ 100 \end{smallmatrix}$ 109
 8955 111

Sta B at 13 Site on A Turn R-N $172^{\circ}21'$ to Sta C, on top in 4

$$172:21 \div 2 = 86^{\circ}10\frac{1}{2}'$$

Since $066709 - X3307 = 2.21$ short should be 2.41

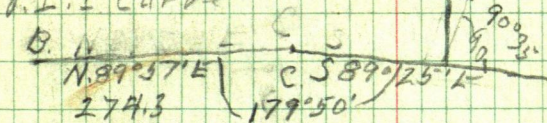
Cosine 9977725 into $33 = 33.07$ should be out 39.09

Monday Aug

John - Bob - Ed & I to Kabetona Lake Sec 32 - 143.32

Tower "C" BS $589^{\circ}57'$ W and run $589^{\circ}25'$ E 464.4 to Sta D

P.I. = Curve



S. angle

$$179^{\circ}50' \div 2 = 89.55^{\circ} L$$

$$89.55^{\circ}$$

Since $001454 \times 33 = 0.05$

Cosine 999999 into $33 = 33.$

From where Lot line turns to take on N chain along right of way (line no 4)

74.38 to hub + 140
 140
 $214.38 + 274.3$ to Sta C
 274.3
 488.68

800 $\begin{smallmatrix} 261 \\ 261 \\ 5.22 \end{smallmatrix}$
 488.68 5.22
 $311.32 + 5.22$
 5.22
 $316.54 = 10$ prop.
 316.44

110
112

160
143-
303-

$$0^{\circ}35' = 33'$$

316.44
34
316.78

$$\sin 010181 \times 33 = 0.34$$

$$\cos 999948 \text{ into } 33 =$$

Tower C IM $\frac{1}{4}$ cor bears $S 88^{\circ}56' W$
121.0 ft

Tower D BS $N 89^{\circ}25' W$ and run
S, $65^{\circ}44' E$ to 305 to E and
continue $S 65^{\circ}44' E$

S. Angl. B son C turn L $157^{\circ}17'$ to E

179°60

980368

196802

22°43'

980443

197087

2157°17'

1960811

2 393989

9804335

1969445

78°38½

663

$$\sin 1969445 \times 5366 = 6.63$$

663
1326

$$\cos 9804335 \text{ into } 33 = 33.66$$

to go.

775

~~4114~~

305

143.22

316.44

326.78

631.78 to go

129.96

631.78

from D

13.22

464.4

631.78

143.22

311.61

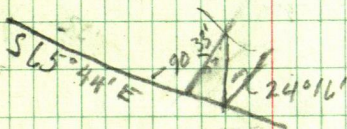
305
326.78

to go from Sta E

152.79

663
15936

@ 326.78 at spike from which we
will have to turn 90° and run 33 ft
then North to lake



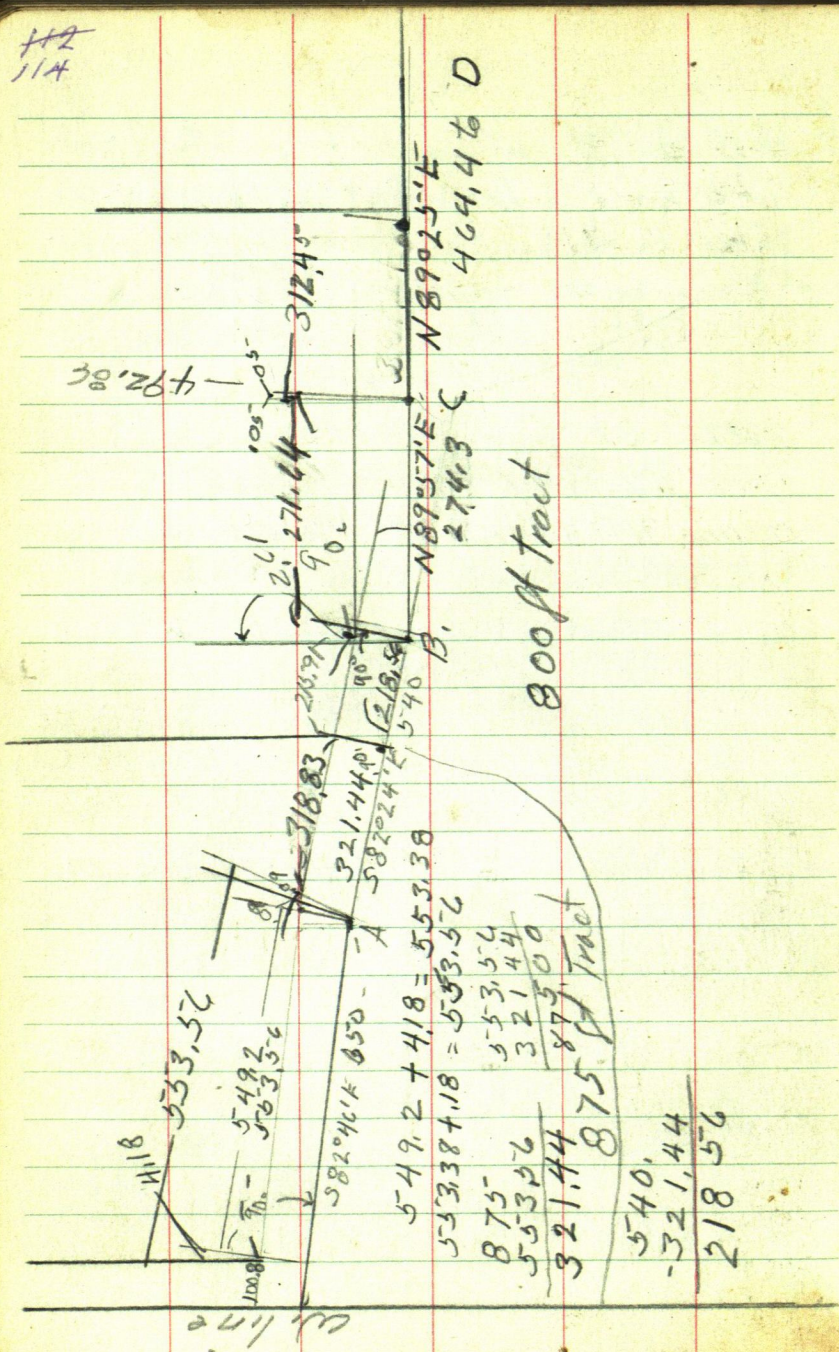
$$\begin{array}{r} 8960 \\ 6544 \\ \hline 2416 \end{array}$$

$$24^\circ 16' 33''$$

$$\sin 410984 \times 36.20 = 14.88$$

$$\cos 911643 \text{ into } 33 = 36.20$$

21856



Figuring in Office

We set stake 325.62 E of Sta A
It should have been @ 326.44
gives W 4.18. We set this stake
4.40 E or 69.98 W of hub 400 which
would be at 330.02 and it should
be at 325.84 then run North OK
which is still 4.18 west of hub
stake between lots 2-3-

From D. chain W 151.95 to pt
for cor 33 ft N @ 90° + $\frac{-34}{151.69}$ W of D
and run North to loko

151.61 + 13.26 around curve = 165.21
at D.

775.00 -
165.21

609.79 -
305.0 to (E)

326.78
319.67

7.11

319.67
7.11

326.78

304.79 to go E of sta (E)
we set a hub at 326.78 and
+ 14.88
341.66 hub

304.79 + 14.88 = 319.67 or 7.11 ft west
of hub 326.78 run North

Tue Aug 14

John - Ed + I to Hobokona
 Lake. Tower B site $N 82^{\circ} 24' W$
 from hub 330.62 chain W 4.18 out
 spike on line Tower 4.18 W, which
 is 325.84 E. Site $S 82^{\circ} 24' E$ along
 E road and run North parallel
 to W line @ 33.29 spike pt for IM

46.1 +

324.1
227
531.1

117

Aug Wed. 15-1956

Ed + I to Habetkoma Lake
open up the section line E line
Sec 32 and set a 50' spike in the road
N over 319.67 E of the E BSN 65°44'60"
and run S 66°36'E @ 304.1 spike hub
on top. + 227 spike hub on top = 531.1

1428
545.38

89°60

700

66°36

545.38

23°24

154.62

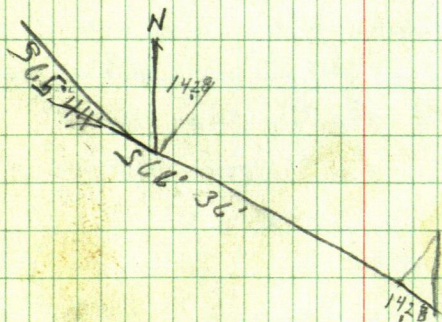
1546.2

1428

168.90

Sine 397148 x 35.96 = 1428

Cosine 917755 into 33 = 35.96



531.1 hub on top + 168.9 + 164.1
= 864.1 hub on top + 231.1 = 1095.2
hub on top in curve

Now hub in curve 7 ft N of the
BSN 66°36'W + run S 58°N'E 333.0
to intersection of the with E line Sec 32

114
~~116~~
118

9846

Over intersection but on
E line of Sec. 32 in E road
BS N $58^{\circ}11'W$ the E line of sec
32 run N $1^{\circ}48'W$ 94.45
to IM.

Correction first Lot the IM goes W 0.15
" Lot line W of Sta D. goes W 0.91 ft

Plat of
Tepee Trails
to be
Signed by

Leonard P. Peterson and
Ethel L Peterson his wife

HE 111
52
211

~~116~~
~~117~~
119

Aug 20 - 1956

Bob - Ed + I to Kabekona Lake
open up Sec. line bet Sec. 4-5 = 142-32
find 2" IM. which sets 20 ft west of our
picket sec. line from point 20 ft E of IM
we rough chain North @ 300 pin + 300 = 600
pin + 29.5 = 629.5 spike in Φ road.
+ 85.4 = 714.9 IM. 2 1/4 x 48" Capped
Gal. IM. Marked ? Aug. 1 Sec. 4-5
629.5 + 150 = 779.5 pin on top + 214.5 =
994.5 to cedar stake on top of bank
779.5 + 266.7 = 1046.20 To IM MC - 2 1/4 x 48
Capped Gal. IM 15 ft S of Water
US measurement 1061.28.
my chain from IM. found 1046.2

fig.

spike in Φ road road bears S 58° 11' E
Tower spike in Φ site NW on spike bar
at 00 - NW angle of Φ road with E line
Sec. 5 is 56° 20'

sine 554360

cosine 832277 into 33 = 39.65

6955

117
119
121

B-b-John & I to Teper trail
on Kabekona Lato
open up lat line bet lots 1-2
of raid plat

Tower spike, but site to flag at
I.M. on brink. Turn L $91^{\circ}02'$ + run
Sino

Cosine 999837 into $100' = 100.02$

IM
IM 46.1 + 65.53 + 62.95 IM + 50 + 10
+ 19 IM + 10 water

117

10 1/2

118
120
122

144-31 ①

April-7th Sunday 1957

Don, Ed, and I pick up Fred ^{zweif}

Walker drive to Sec 19-144-31

Hop. Steamboat Lake

we stop at N $\frac{1}{2}$ bet Sec. 18 & 19

and look for the corner I had

it in Oct 1951 when I surveyed

for D.D. Long, ground frogs, we

do not seem to locate it we

drive $\frac{1}{4}$ mile West to Sec cor on

County line NW cor of Sec 19

143-31

goes and gets Helmer Bragg who lives N on

Hubbard County side of Co. line

he comes back and after digging up

a lot of ground we find the NW

cor Sec 19-144-31 a 6" cement

core. Steam pipe filled with cement

from this corner we chain E

along N line Sec 19 rough, dig up

about 10 ft of road no sign of W $\frac{1}{2}$.

rough chain E to $\frac{1}{4}$ dig but do

not find any cor. as the road

has been cut down almost 3 ft.

I figure the cor might have been

grubbed out drive back to $\frac{1}{4}$

O Fred Zweifel

Sand Beach Motel Resort N shore
Ten miles Lake Hackensack

119
121
123

where we finally locate the car
being a 5 x 9 cement corner

Work T on line between
NW cor on W $\frac{1}{4}$ N 1/2 sec. 19-144-31
and set a hub E on N line sec
19-144-31 and set hub 500 yds
on Hill about 1400 ft E of W $\frac{1}{4}$

from West $\frac{1}{4}$ Chair E 300-600
 $900 + 200 + 153 = 1353$ US measurement
on Land Office Re-survey plat
in Office of Reg. of Deeds Walter
Phelan. T over hub on hill BS on W $\frac{1}{4}$
and set a 600 yds for Temp $\frac{1}{4}$
between 18-19-144-31 at 1353 E
of W $\frac{1}{4}$

T over Temp $\frac{1}{4}$ bet 18-19-144-31
BS N $87^{\circ}22'$ W on W $\frac{1}{4}$ and ran
S $88^{\circ}28'$ E set hub on hill in road

T still at Temp ran
S $0^{\circ}14'$ E on Random N 4 S $\frac{1}{4}$ sec 19
being W line of Govt lot 4-sec 19

Don + Ed cut line

South

120
122
124

1200
789
211

35-
31.8
3.2

Ties to Temp 1/4 Cor between
Sec 18 & 19 - 144-31

W.P. 6 N 43° 07' E 33.91 mpt + Bar
Azim 14 S 7° E 50.35 top Blge

South @ 300 stake 600 stake
+ 14.5 = 614.5 Hub 509 spike
@ 900 stake @ 1200 stake - 21.9 =
1178.9 but 50% spike

1200 + 240 = 1440 ant. plowed field
@ 1500 pin in field + 2.30 pin = 1730
pin + 2.3 = 1732.3 but 50% spike

1730 + 201.8 = 1931.8 + 23.9 to station

Tower 1931.8 site Norman line

Var @ 0° old 6" pin post up
on top 1 ft 4x4 bears

95° 43' NW angle 11.6

water
2 ft. 3

26

1440
1178
261

1931.8
1732.3
199.5
23.9
232.8

2886
21.9
1781

160

1288.9
945
9075

900

452
8548

121
123
125

1661.2
769
1738.1

1661.2
769
1738.1

W 1/4 1353.1 N 87° 23' W ¹²⁴ ~~Temp~~ N 88° 28' W 1315.05

April 8th 1957 Monday

Ed stays home from school to help me.

@ about 8 O'clock we pick up O. Fred Zweifel and drive to see 19 144-31 beg at spike on Hill Chain West @ 250 m + 300 - 550 + 100 = 650 + 146.3

146.3
796.3
750.0
46.3

at point 750 E of Temp 1/4 site N 88° 28' W on Temp 1/4 and run S 0° 14' E

Met Helmer Brogger to help

Cut line at 9:30 @ 100 + 300 = 400 stak + 46.5 = 446.5 hub 50' spike @ 700 stak @ 900 stak - 45.2 = 854.8 hub 50' spike @ 1200 stak - 9.25 = 1190.75 hub 50' spike @ 1500 m + 166.2 = 1666.2 hub under X + 76.9 = 1738.1 hub on brink

~~+22~~
~~+24~~
126

Steam boat Lake

@ 1230 Fred & Halmer Brogger left
back Fred will take Brogger
home with my car. Ed & I at hub
in drink & chairs we start
for dinner @ 12:50

T still over hut 1661.2 S. to N
Var. @ 0° and run S $50^\circ 20' E$
122.8 to stake at Edge of ice

Now stake at edge of ice
BS N $50^\circ 20' W$ on hut 1661.2
take stake of shore line to

102. N $54^\circ 15' E$ N about 15 ft
230 N $66^\circ 20' E$
400 N $73^\circ E$
770 N $86^\circ 30' E$

Run West

54. S $88^\circ 10' W$

170 S $74^\circ W$

320 S $73^\circ W$

Run S $73^\circ 34' W$ 300 + 238 = 538 to sto

(2)

Tower 2 BS N $73^\circ 34' E$ on 1 & run
S $82^\circ 36'$ - 300 + 30 = 330 to
stake on W line lot 4

O. Fred Zwißel

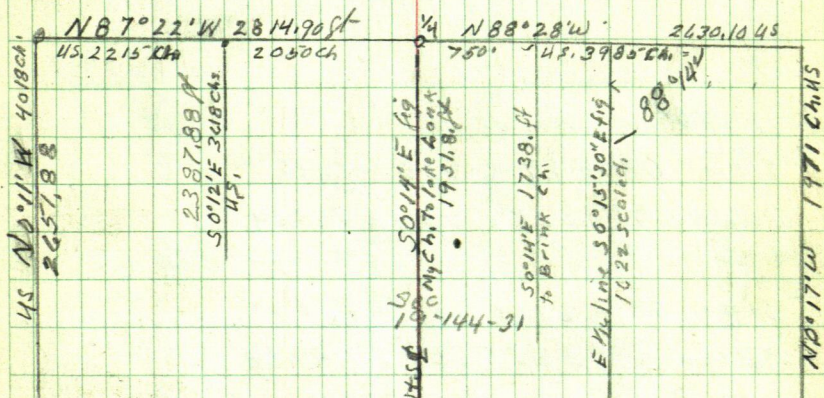
Lot 4 Sec 19 14431

123
125
127

figure 149

According to Gen. ^{U.S.} Land Office - Re-survey
plot in Office of the Reg. of Deeds Walker Minn

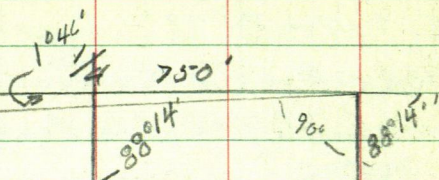
Sec 18-144-31



as the Govt in their Resurvey did not
run the N 4 S E or the E 1/2 line of Sec 19-144-31
and as the 1/4 corner is in the Lake the N 4 S E
runs South on a mean course to the outside lines
which in this case is S 0° 14' E The E 1/2 line
should run S 0° 15 1/2' E making a difference of
0° 01' 30" in N 4 S E and the E 1/2 line
0° 01 1/2'

9146.0004365 x 1622 = .71 width at 1622 S.
Cosine 1

124
128



1°46'

$$\sin 030829 \times 750 = 23.12$$

$$\cos 999525 \times 750 = 749.64$$

$$\sin 030829 \times 250 = 7.71$$

$$\cos 999525 \times 250 = 249.88$$

$$\sin 030829 \times 500 = 15.41$$

$$\cos 999525 \times 500 = 499.63$$

$$\sin 030829 \times 565.05 = 17.42$$

$$\cos 999525 \times 565.05 = 564.78$$

125
924

146d
250

2312
8665.84

11.88

50°14'E N45E 1931.8

1302874.32

31.8/10 Acres

7264012

151

500

499.63

1046

190

1738

50°14'E

1742

565.05

524.78

21+ Acres

190

50°15'E

1600' wide to 19' width

1622 Scaled

151.88

126
128
130

Lot 4 Sec. 19-144-31

April 18th 1957

Fred Zwiopl comes in
wants a nother plat of this
30 acres The Deed calls for
750 ft E of $\frac{1}{4}$ which is
45 ft too far E to be able to
stay at the 750 ft Point
there would be 31.80 acres
accord to Description

He gives me two Silver
Dollars and says for me to
give one to Donald and one
to Edward because they were
good about working.

Gov't Lot 1 Sec. 20 ① Hubbard Co.
139-33

129
131

Roy Anderson & Pauline Anderson his wife
of Hubbard County Minn.
to

Warren W. Williams & Mary F. Williams
his wife

All that portion of Gov't Lot 1 - Section
20 - Twp. 139 Rge 33, Lying N of State
Highway # 87 and west of the Crow
Wing River and described more
particularly as follows. Commencing
at the east $\frac{1}{4}$ corner (marked by I.M.
on the N line of said Sec. 20

thence running South along the E $\frac{1}{4}$
line of said Sec. for a distance of 81 ft
to a point on the E of said Hy # 87 as
now laid out and constructed

thence running Southeastly
deflecting Left $35^{\circ}50'$ along said
E of said Hy 87 for a distance of 387.8
ft thence deflect Left 23° for a distance
of 100 ft. along said E of said Hy,
thence deflect Left 14° along said
E for a distance of 388.3 ft to a
point on the E of the now existing
bridge over Crow Wing river. thence
running N.Werly along the meanderline

128
132

(2)

of the S. shore of Third Crow Wing
lake interior angle $26^{\circ}30'$ a distance
of 311 ft thence deflect R. $19^{\circ}45'$
along said Meander line for a distance
of 425 ft. to a point on the N line
of said Sec. 20 thence running
Westerly along said N. line of said
Section 20 a distance of 274 ft
to the point of beginning

Containing prox. 4.10 acres
above is copy of

W.D. filed July 26-1952

Book. 94 of Deeds on page 523-

Fri. June 28-1957

Ed. takes his drivers tests OK
Send for his drivers Lic. \$2.00

I take Bert. to work get
Telephone call from Park
Rapids while I am in Bills Rest,
Go to Court House get this book
and platts drive home get flag poles
& Transite pick up Ed and we
drive to Park Rapids to see
Marion Hogen

where he gives me the W.D. which
I copy on page 131 of this book,
drive to Williams Filling Station
Williams has gone into town will
be right back wait

Williams comes and we follow
him with our car to Ave 20-139-33
He shows us what he wants done
starts to rain Ed + I back to
Walker.

9-30 Bert goes to Show
I go to court house to put description
shown in deed on paper.

130
137

to Bridge

4

Sta-D
1 1/2

Sta-D
1 1/2

Sta 1

Sta 2

Sta 3

Sta 4

Sta 5

Sta 6

Sta 7

Sta 8

Sta 9

Sta 10

Sta 11

Sta 12

Sta 13

Sta 14

Sta 15

Sta 16

dist
W

dist
N

dist
E

dist
S

Course

Sine

defect

Course

dist

defect

Course

dist

defect

81'

314.40

22.703

57.75

810.723

585.429

855.665

517.529

995.450

295.152

114.61

371.00

224.97

190.19

380.07

214.73

380.07

214.73

380.07

214.73

380.07

214.73

380.07

214.73

380.07

214.73

224.97

380.07

214.73

380.07

214.73

380.07

214.73

380.07

214.73

380.07

214.73

380.07

214.73

380.07

214.73

380.07

214.73

380.07

214.73

380.07

214.73

380.07

214.73

380.07

214.73

380.07

214.73

380.07

214.73

380.07

214.73

380.07

214.73

380.07

214.73

380.07

214.73

380.07

214.73

380.07

214.73

380.07

214.73

380.07

214.73

380.07

214.73

380.07

214.73

380.07

214.73

380.07

214.73

380.07

214.73

380.07

214.73

380.07

214.73

380.07

214.73

380.07

214.73

380.07

214.73

380.07

214.73

380.07

214.73

380.07

214.73

380.07

214.73

380.07

214.73

380.07

214.73

380.07

214.73

380.07

214.73

380.07

214.73

380.07

214.73

380.07

214.73

380.07

214.73

380.07

214.73

380.07

214.73

380.07

214.73

380.07

214.73

380.07

214.73

380.07

214.73

380.07

214.73

380.07

214.73

380.07

214.73

380.07

214.73

380.07

214.73

380.07

214.73

380.07

214.73

380.07

214.73

380.07

214.73

380.07

214.73

380.07

214.73

380.07

214.73

380.07

214.73

380.07

214.73

380.07

214.73

380.07

214.73

380.07

214.73

380.07

214.73

380.07

214.73

380.07

214.73

380.07

214.73

380.07

214.73

380.07

214.73

380.07

214.73

380.07

214.73

380.07

214.73

380.07

214.73

380.07

214.73

380.07

214.73

380.07

214.73

380.07

214.73

380.07

214.73

380.07

214.73

380.07

214.73

380.07

214.73

380.07

214.73

380.07

214.73

380.07

214.73

380.07

214.73

380.07

214.73

380.07

214.73

380.07

214.73

380.07

214.73

380.07

214.73

380.07

214.73

380.07

214.73

380.07

214.73

380.07

214.73

380.07

214.73

380.07

214.73

380.07

214.73

380.07

214.73

380.07

214.73

380.07

214.73

380.07

214.73

380.07

214.73

380.07

214.73

380.07

214.73

380.07

214.73

380.07

214.73

380.07

214.73

380.07

214.73

380.07

214.73

380.07

214.73

380.07

Pt in E of Bridge is 561.76 S
and, 683.60 E of $\frac{1}{4}$ cor.

683.6 into 561.76 = 8217676 = 39.25°
NW angle from bridge N 50° 35' W

$$458.63 \div 772549 = 884.86$$

39.25° - N 50° 35' W

Sine 772549 into 683.60 = 884.86

Cosine 634955 x 884.86 = 561.85

Tang. 821897 x 683.60 = 561.85

from $\frac{1}{4}$ corner called 00
pt on Sec line according to description
is 268.44 E and 33.04 N

3304 + 268.44 = 1230815 = 7° 01'
E 7° 01' N or N 82° 59' E

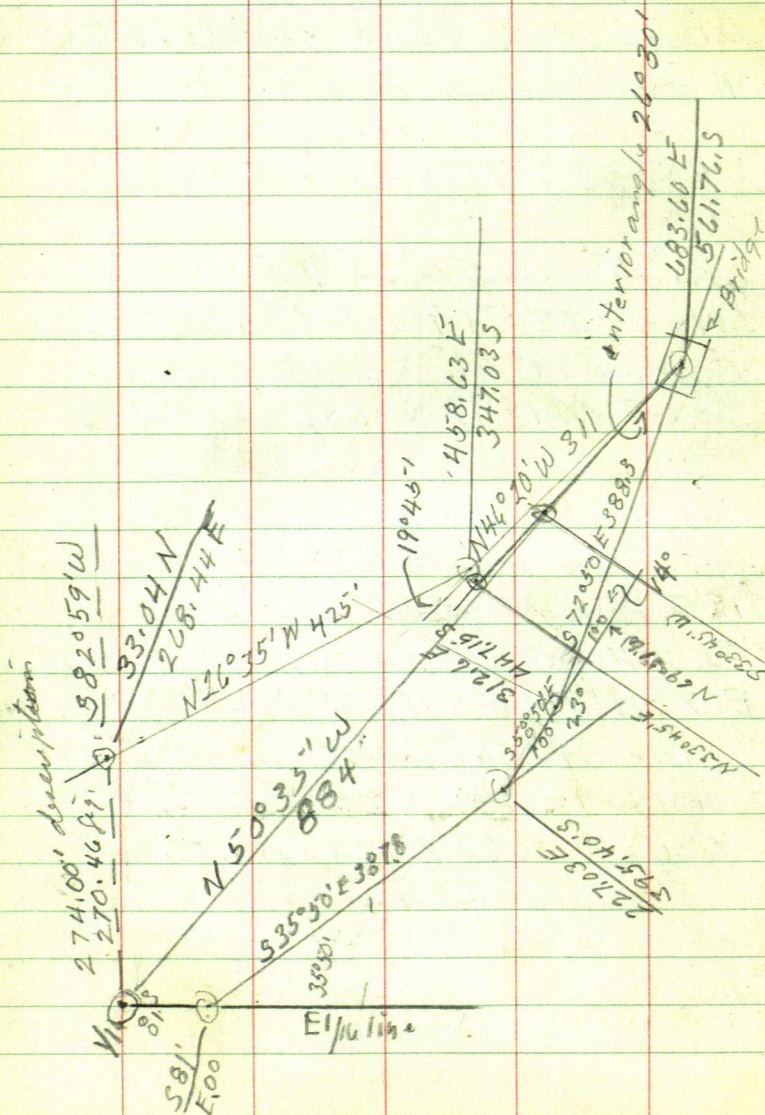
Sine 992541 into 268.44 = 270.46

Cosine 122158 x 270.05 = 3304

Tang. 123080 x 26844 = 33.04

0'

109.9
2.



$$\begin{array}{r} 180.1 \\ 50 \\ \hline 230.1 \\ - 29 \\ \hline \end{array}$$

$$\begin{array}{r} 649.9 \\ 9 \\ \hline \end{array}$$

$$\begin{array}{r} 50 \\ 170 \\ \hline 239 \\ \hline 2439 \end{array}$$

$$\begin{array}{r} 6848 \\ + 33 \\ \hline 736 \\ \hline 137 \end{array}$$

Don + I to Sta. 20-139-33

stop at Akley watch parade

Try and work T on line between
Center of Bridge + $\frac{1}{16}$ IM but Tree
from T chain N.W. 640.9 to $\frac{1}{16}$ IM

T still over 640.9 pt in Φ bridge bears

$$\angle 0^\circ 21' - 243.9$$

$$\sin 006109 \times 243.9 = 1.49$$

$$\cos 999981 \times 243.9 = 243.89$$

$$640.90$$

$$243.90$$

$$.001683996 \text{ o/k}$$

$$884.80 \text{ into } 1.49.00$$

Correct is .001683996

but 640.9 goes N 1.08

Tower pt in Φ bridge site N $50^\circ 35' W$ on
line bet $\frac{1}{16}$ + pt under T

run N $48^\circ 55' W$ x 223.10 to NE Cor Tract

Tower cor of Tract BSS $48^\circ 55' E$ run
S $33^\circ 45' W$ 107.9 to spike in Φ tar road

Tower 107 run N $69^\circ 51' W$ 100 ft on Φ

NW angle $103^\circ 33'$

134
138

1501
145.1

13033'

side 234294

33 = 33.94

cosine 972164 into 50 = 51.43

Turn 100 ~~180~~ Φ to $S 69^{\circ} 51' E$

and run N parallel to E line

$N 33^{\circ} 45' E$ 1451.1 @ 51.43 spike
on 50 ft R/W line

97.9 along shore line

Figure ing Location of
NE Cor of Tract being sold
pt in Φ bridge is

683.6 East and 561.765 of $E \frac{1}{4}$
run $N 48^{\circ} 53' W$ 223.1

Side 753753 \times 223.1 = 168.16 W

cosine 657156 \times 223.1 = 146.61 N

683.60 E

561.765

168.16 W

146.61 N

515.44 E

415.15 S

sopt of beg of said tract is
upon shore 415.15 ft S of an $S 15.44'$
E of $E \frac{1}{4}$ cor N side Sec 20-139-33

99.9

$$\begin{array}{r} 900 \\ 1333 \\ \hline 10333 \end{array}$$

100

$$\begin{array}{r} 979 \\ 21 \\ \hline \end{array}$$

$$\begin{array}{r} 133 \\ 139 \\ \hline \end{array}$$

97.9 ft from water

pt of beg run S $33^{\circ}45'W$ 107.9'Sine $555570 \times 107.9 = 59,95'W$ Cosine $831470 \times 107.9 = 89.723$

run along, E

N $69^{\circ}57'W$ 100'Sine $938794 \times 100 = 97.88'W$ Cosine $344479 \times 100 = 34.45'N$

run:

N $33^{\circ}45'E$ 145.1Sine $555570 \times 145.1 = 80.61'E$ Cosine $831470 \times 145.1 = 120.65'N$

Tue July 2 - 1957

Ed & I to 3rd Crow Wing Lake

Rever pt of beg site S $33^{\circ}45'W$ on apex
 in E chain N $33^{\circ}45'E$ 33.94 set pt
 for I.M. on 33 ft Ref W line of #87

Still at pt of beg. run N $47^{\circ}45'W$
 along shore 100 ft - 10 to open water

Rever 100 run S $53^{\circ}08'$ - 33.94 from
 E and 1/134

Continue in Book 292 on page
 116

136
D-140 4

142-31

38. 1-15 Me. in water

Sec. 9.
BOOK Bpg. 524

~~Кабанько и Боя~~

Leschke

144/16
Q45me in water

W.C. 138.3' S 38° 10' E

125° 12' 30"

1281.1

1248.9

2

791

125-5343

1292.3

2227

126352
9

8

9

17

16

1303.48

~~800's~~ ~~17~~

~~800's~~ ~~17~~

~~800's~~ ~~17~~

~~800's~~ ~~17~~

Pine Cone Resort

$\begin{array}{r} 290 \\ 774 \\ \hline 3674 \end{array}$ 137
141

Sunday Aug. 4-1957

Old Notes. page 94 + this book says
Ed I chained E from IM Center
w/2 sec 9 @ 767.2 East of IM to
East rail of S.N. R.R. Tract

Tower IM on E Rd/W of SNRR
Site E on M.C., set spike W of road
from E rail of SNRR chain west
250 pins 3 ft E of Tar. (371)
+ 20 = 270 ft tar
+ 40 = 290 - 3 ft W of tar
290 + 77.4 = 367.4 W of East rail
of S.N.R.R. Tract = hub.

Tower 367.4 Site N $88^{\circ}37'30''$ E
and run N $39^{\circ}14'W$. 734.25 hub up to
N side Pine Cone road

Aug 5-1957

Ed I to Pine Cone. Tower 734.25
N edge of Pine Cone driveway
run along N edge of driveway S $47^{\circ}19'W$
to hub on N edge of drive in line
with W end of harbor

438
142

Still at 734.25 to h. sta. reading
of Lake shore Kabekoma Bay.

935 N 37°W - 290 - N 45°W

230 - N 61°45'W 265 - S 81°30'W

Water
7 R

310 - S 76°30'W

Water 7 R.

350 S 69°30'W

W 7. R

425 - S 63°48'W end

430 - S 62°15'W end

365 - S 64°45'W - 290 - S 73°45'W

245 - S 77°15'W - 180 S 81°30'W

92' - S 84°W - 70 - S 71°W

70 - S 58°30'W cor of canal + road.

Still at 734.25 run N 88°37°30'E

103.2 to E. Tap.

300 + 169. to sta.

Tower 469 BS N 47°19'E

from 734.25 run S 47°19'W @

100 - water in canal is 10' N - S 24'
over road.

@ 200 - W. 12 R. road edge 3. R - over
road. 29 over road.

@ 300 N shoulder road 3' W. 10 R over road
28

97.75

~~139~~
143

at Sta 469. - 4' S of shoulder over road 22
road turns runs S 52°10' W

Then over 469 take Sta. of end of
harbor

30' N 31°15' E 22 N 1°30' W

30 N 36°30' W 60 N 57° W

160 - N 47°50' W - 25 - bay - 2 - harbor.

Then over 469 run N 69°53' W

125.65

Then 125.65 BS S 69°53' E corner of
cabin beam

Then 125.65 run N 38°10' W parallel
to West line set up on seawall

Then at 0 corner of house beam
S.W. 56°55' - 97.75

56°55' 97.75

Sine 545858 x 97.75 = 53.36

Cosine 837878 x 97.75 = 81.90

is 81.90 wants 100

81.90
8.10

140
144

18965
6.65

from line 100 ft from cabin
run S parallel to W line
S 38° 10' W

from IM. Center of sec
chain W 264.1 to
intersection of lines pt for IM,
from IM chain Northwly
@ 290 ft road @ 300 ft
+ 183.66 = IM 10 ft S of water

fig
from IM SE cor Sec 9

141
145

264.1 5m 399.8
N 88° 37' 30" E 767.2
497.2

311

142
146

Steamboat Lake
Sec 19 - 144-31

Lot 3 Sec 19.

Mrs John Goss.

Aug 28th 1957 Tue.

Ed & I to Steamboat Lake
we find the old 50' spikes on
N+S & Sec 19 see page 124
this book

from hub 1931.8 continue
N+S & S 3.2 ft to 1935

T over 1935 S of $\frac{1}{4}$ N side Sec 19
BS N $0^{\circ}14'W$ and run S $78^{\circ}30'$

SV along Lake shore 283.

Ties to MC on N+S & Sec 19
Birch Cluster N tree = Birch 5 N $77^{\circ}E$
39' $3\frac{1}{2}"$

Birch 10 N $67^{\circ}W$ 2' $4"$

Tower 283 BS N $78^{\circ}30'E$ run
N $24^{\circ}12'W$ to Light Pole from
Light Pole chain Setty.

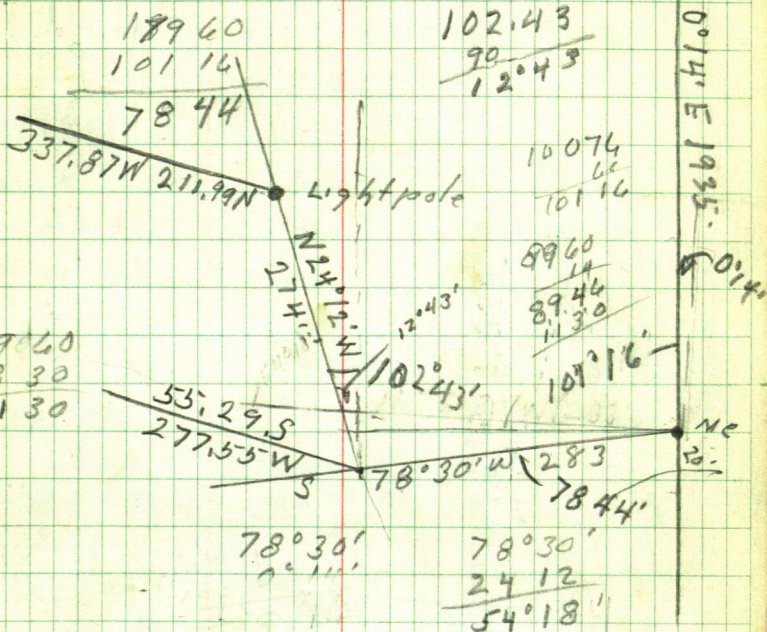
@ 123.5 corner of outbuilding
@ 270 + 4 = 274 to T + 19 to water

$$\begin{array}{r} 60.32 \text{ W} \\ 2 \ 77.55 \\ \hline 3 \ 37.87 \end{array}$$

$$\begin{array}{r} 267.28 \text{ N} \\ 55.29 \\ \hline 211.99 \text{ N} \end{array}$$

$$\begin{array}{r} 1935 \\ 211.99 \times 43 \\ \hline 1723.947 \end{array}$$

N line Sec. 19 N 87° 22' W



N 78° 16' W 283

~~Sine 979105 x 283 = 277.57 W~~

~~Cosine 203357 x 283 = 57.55 N~~

S 78° 44' W 283

Sine 980728 x 283 = 277.55

Cosine 195376 x 283 = 55.29

N 12° 43' W 274

Sine 220130 x 274 = 60.32 W

Cosine 975471 x 274 = 267.28 N

144
148

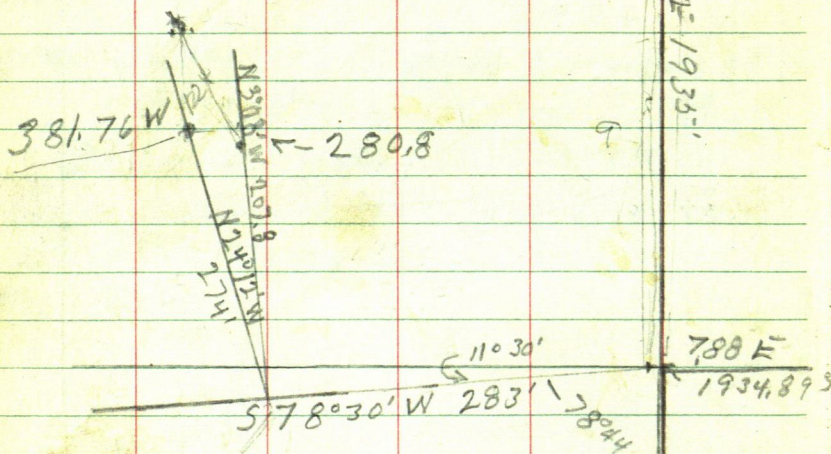
209.80

Still over 283 run $N 3^{\circ} 08' W 207.8'$

$N 3^{\circ} 08' W 207.8'$

sine

cosine



S 0°14'E 1935

$$\text{Sine } 004072 \times 1935 = 7.88 \text{ E}$$

$$\text{Cosine } 999992 \times 1935 = 1934.98 \text{ S}$$

S 78°30'W 283

$$\text{Sine } 979925 \times 283 = 277.32 \text{ W}$$

$$\text{Cosine } 199368 \times 283 = 56.42 \text{ S}$$

N 24°12'W 274

$$\text{Sine } 409923 \times 274 = 112.32 \text{ W}$$

$$\text{Cosine } 912358 \times 274 = 249.99 \text{ N}$$

N 3°08'W 2078

$$\text{Sine } 054660 \times 2078 = 11.36 \text{ W}$$

$$\text{Cosine } 998505 \times 2078 = 207.49 \text{ N}$$

277.32

7.88 E

1934.89 S

277

269.44 W

56.42 S

381.76

112.32

199031 S

280.80

381.76

249.99 N

100.96

174032

9131

26944 W

199031 S

1136

120749

280.80

178282

N 39° W 160.43

$$\text{Sine } 629320 \times 160.43 = 100.96 \text{ W}$$

$$\text{Cosine } 777146 \times 160.43 = 124.68 \text{ N}$$

0°14

$$\text{Sine } 004072 \times 124.68 = 0.51$$

Cosine

146
150

Milo Plastny

Akeley - 3 mi. S on Hwy 64

G I Loan.

Section 3- 140-32

? Not s $\frac{1}{4}$ line along W side sec 3?

S $\frac{1}{2}$ of SW $\frac{1}{4}$ SW $\frac{1}{4}$ of SE $\frac{1}{4}$

S 16 rods of NW $\frac{1}{4}$ of SW $\frac{1}{4}$ Sec 3

140-32

Over pt on approx S $\frac{1}{4}$ line
sec 3. ^{rod, reads} 2.3 ft E of sec. line
Site W on temp S $\frac{1}{4}$ line

Take buildings

Barn

NE cor S 50° 07' E 193 52 x 36

NW cor S 38° 14' E 157

SW cor S 31° 25' E stada 1.3 NW cor 185

Gas shed.

NW cor N 72° 43' E 20.11" 8.4 x 6.4

SW cor N 89° 10' E 21.10"

SE cor N 89° 10' E

Garage + wash. shed

NW cor N 38° 16' E 140.4-9

SW cor N 65° 06' E 69.9-4

SE cor N 72° 16' E 90.2-4

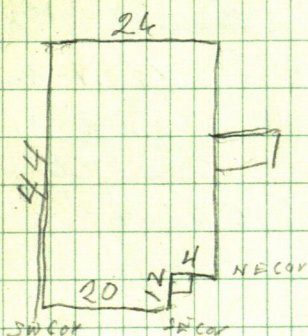
90.13 x 24

Basement house

SW cor N $37^{\circ}57'W$ 69.6-6

SE cor N $20^{\circ}55'W$ 59.4-6

NE cor N $11^{\circ}44'W$ 70.2-7



well 2 ft W
N $11^{\circ}44'E$ 72.8

pump

S $21^{\circ}55'W$ 9.7"

~~148~~ Lot 4 Dec 9-142-31

152 John Bob & I to Leech Lake Lodge
deed description on page 73

as the line which runs $N 44^{\circ} E$

True on line set Tower pt 5 of

fence note on flag at Gate the flag
at IM on shore bears $L 3^{\circ} 35'$

from IM at Gate chain 120.1 but
but under K + 83.55

203.65

run $L 3^{\circ} 35' - 125.65$ to IM

$3^{\circ} 35' 125.65$

$\sin 062500 \times 125.65 = 785$

$\cos 998045 \times 125.65 = 125.40$

203.65

125.40

329.05

$329.05 \sqrt{.023860182}$
 785

Corrections

$.023860182$ N for each ft E

$120.1 \times .023860182 = 2.87$

True spike on trail line sets $S 44^{\circ} W$
from $N 81^{\circ} 47' W 239.87$
 $=$ N W angle $L 37^{\circ} 44'$

$\sin 611987 \times 239.87 = 177.40$ W

$\cos 790868 \times 239.87 = 189.71$ N

Lot 4 See 9-142-31 300
 $\begin{array}{r} 177.4 \\ 122.6 \\ \hline 300 \end{array}$ #48
 153

Turn 239.87 BS S 81° 47' E 1m

S 37° 53' W 215.10

S 82° 10' W

212.99

Sin 4 99066.9 into 122.6 = 123.75

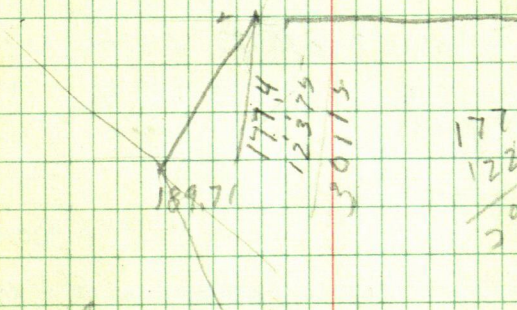
cosine 136292 x

124
 $\begin{array}{r} 545168 \\ 272584 \\ 136292 \\ \hline 16906208 \end{array}$

329
 22

 367
 190
 16

 513



177.4
 $\begin{array}{r} 122.6 \\ 200.0 \\ \hline 2 \end{array}$ 260.8

Quadrant Bot John + I Kover gets
 on line turn 90° - 300 ft Turn 90° - IM
 at lat 204.50 water 20 ft
 NW 260.8 IM 13.5 from E road

154 Govt Lot 4
Sec 9-142-31

Tower spike put on South line
Sec 9 142-31 - 54.4 ft W
of I.M. S.E. cor. Sec.

run: N 26° 27' E 351.9

Tower 367.9 I.M. bears N 63° 59' E
177.3

Tower I.M. B.S. 563° 59' W line

runs N 39° 18' W

fig.

From S.E. cor Sec. 9-142-31

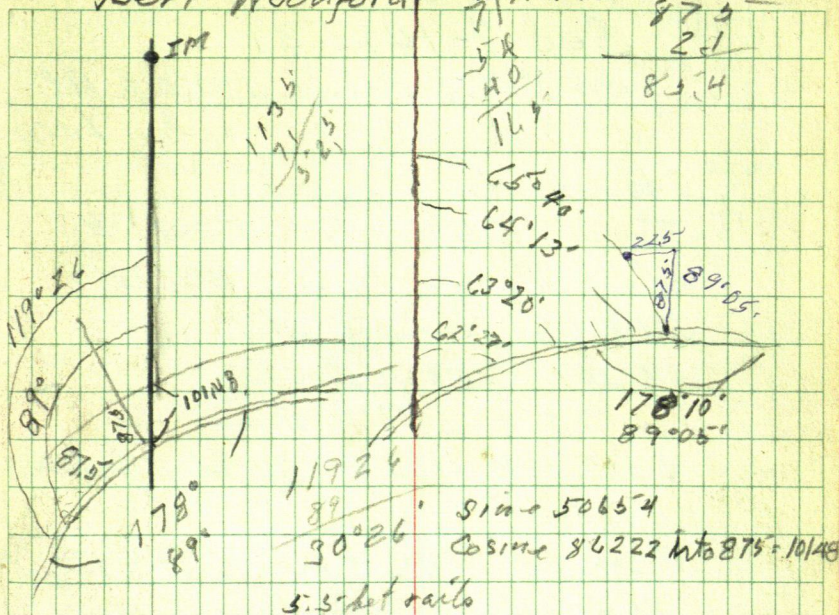
run West 54.4 ft; thence N 26° 27' E
351.9; thence N 63° 59' E 177.3

Come dist	sin	cosine	North	East
West 54.4				
N 26° 27' E 351.90	445.417	895.323	315.06	156.74
N 63° 59' E 177.30	898.666	438.633	159.33	77.77
			474.39	234.51 E
				-54.40 W

beg at a point 180.11 ft E and 474.39
ft N of iron monument (County iron)
at the S.E. cor of Section 9-142-31
thence N 39° 18' W 465.30 ft to I.M.
and continues N 39° 18' W 13 ft ± to
E of Easement road thence N

Sec 10 1891 2-31 1194
Bert Woodford - Box 442 Walker

157
153



101.48

280

99.18

IM

54.4

54.4

54.4

54.4

54.4

54.4

54.4

54.4

54.4

54.4

54.4

54.4

54.4

54.4

54.4

54.4

54.4

54.4

54.4

From IM Co Iron run E

at 40.6 spk. on sand beach

10 per water 10 per top seawall

Transverse spk. on beach side W run

W 71°45'S 75' shotado

W 76°20' 160'

W 75°56'S 2344 to IM

Point 5000

Bert 442

152
136

331.8
458

110
2.1

331.3
457.5

3776

103.9

37705

Sec 9-142-31

from I M chain N 331.8 to ME
" I M " S 45.8 to Lot Cor

SE cor lot. 5-

Tower SE cor lot 5-site N

along E line Turn L $56^{\circ}20'$

308.68. to angle pt

$56^{\circ}20' = 55^{\circ}11'E$

Tower AP BS S $58^{\circ}11'E$ and run

N $66^{\circ}36'W$ 103.9 to pt for SW

Cor of tract

Tower SW cor of tract run N $7^{\circ}E$ 179.6+

91.4 rph + 55 water

• NE angle $106^{\circ}55'$

Part of Lot 5 of Plat of Teepee
Trails described as follows.

179.6

91.4

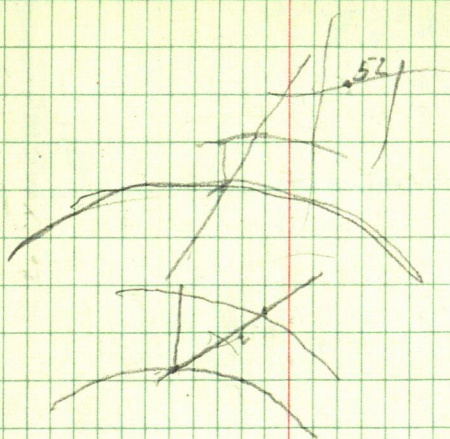
271.0

55

321.

Sec 16. - ⁸⁹42 - 31

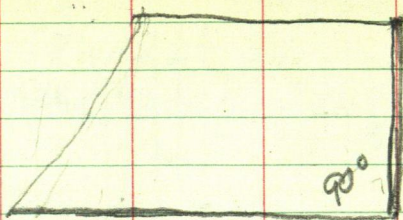
153
157



113.5
54.4
147.9
3

71.00
54.00
125
36

~~154~~
158



179 60
106.4

~~156~~
159

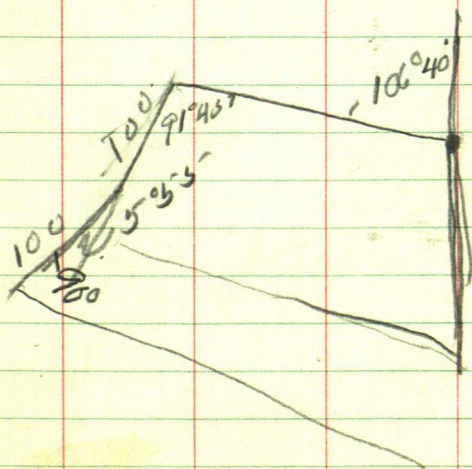
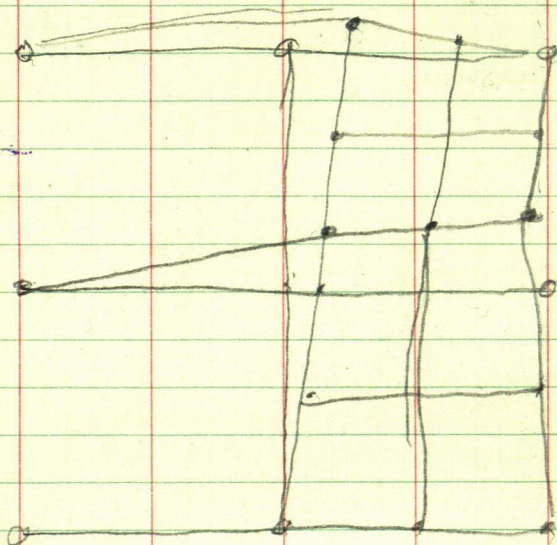
73°20

179 60

71 28

108°32

156
160



454.9 From $S66^{\circ}26'E407$

to 16.9 From $S67^{\circ}15'E$

$100+80+300=480=+300=780+$
 $780+300=1080+300=1380+260=$
 $1640.+41.20=1644.20$ to 7.1 mi

old road 2.5 mi E of road in main
road 10.1" IM. In road

$N3^{\circ}30'W$ 27.75 IM @ $300-10.6=IM$

$N^{\circ}11'$
M.E. 20.15 from water

@ pt 104.75 W of 772.05

on top look for 4.03

run $N0^{\circ}08'E$ 214.9 IM @ $300-.03$

2772.05 - 299.7 IM was 10.1

221.8

217.8

24.86

97

3.55

106.25

133365

Σ39.4 266730

133315

132325

1040

133365

128914

4451

133365

2464175

2666825

333335

333365

333460

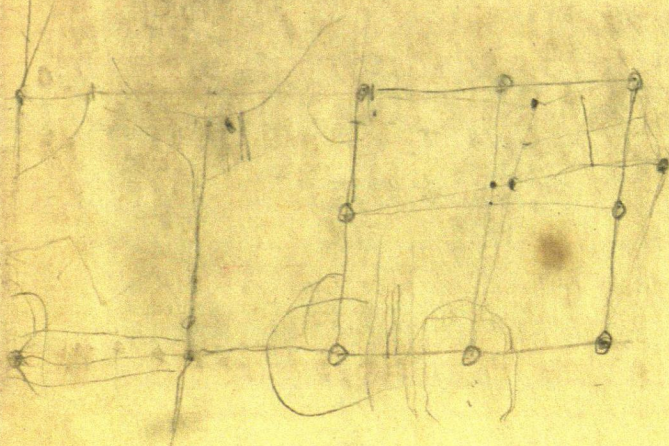
533190

00190

533460

266730

634



350 enter ramp SE
410 Lv ramp NW

from hub on top chain W @ 289.5' hub
@ 300 pin @ 251' hub pt. 1323.25' E =

1974.25'
from spike on top in S shoulder of
chain W @ 190 pin + 220 = 410 pin +

1974.25'

797.8

2772.05'

2730

1608

16500

9648

16500

9648

1815.00

1061.28

2640

100

4453.00

134.25'

1323.25'

651

1974.25'

387.8

2362.05'

220

2582.05'

190

2772.05'

2640

132.05' - over 6' and

180
- 3.1

190 + 2.9

2772.05'

481' 5"

3258'

6' short N shoulder road, +10'

Lv road,

3254' +

220

3474' +

1268

3600.8

130 - 3.2

3.2

1268

3473.55'

1268

3600.35'

2644

7664.75'

130

31

E 3600.8' hub,

2644

3865.2

I M¹/₁₆ cor sets, S 15° 39' E 9.90 ft

264.4

192.9

1269

460

130

31

1269

1323.25 90 386475 651.
 301.5 2.2 267 2525
 168423 878 742 3610

125

DISTANCES FROM CENTER OF ROADWAY FOR CROSS-SECTIONING.

Roadway 16 feet wide. Side Slopes 1 on 1½
 For Single Track Embankment.

H	0	.1	.2	.3	.4	.5	.6	.7	.8	.9	H
0	8.0	8.2	8.3	8.5	8.6	8.8	8.9	9.1	9.2	9.4	0
1	9.5	9.7	9.8	10.0	10.1	10.3	10.4	10.6	10.7	10.9	1
2	11.0	11.2	11.3	11.5	11.6	11.8	11.9	12.1	12.2	12.4	2
3	12.5	12.7	12.8	13.0	13.1	13.3	13.4	13.6	13.7	13.9	3
4	14.0	14.2	14.3	14.5	14.6	14.8	14.9	15.1	15.2	15.4	4
5	15.5	15.7	15.8	16.0	16.1	16.3	16.4	16.6	16.7	16.9	5
6	17.0	17.2	17.3	17.5	17.6	17.8	17.9	18.1	18.2	18.4	6
7	18.5	18.7	18.8	19.0	19.1	19.3	19.4	19.6	19.7	19.9	7
8	20.0	20.2	20.3	20.5	20.6	20.8	20.9	21.1	21.2	21.4	8
9	21.5	21.7	21.8	22.0	22.1	22.3	22.4	22.6	22.7	22.9	9
10	23.0	23.2	23.3	23.5	23.6	23.8	23.9	24.1	24.2	24.4	10
11	24.5	24.7	24.8	25.0	25.1	25.3	25.4	25.6	25.7	25.9	11
12	26.0	26.2	26.3	26.5	26.6	26.8	26.9	27.1	27.2	27.4	12
13	27.5	27.7	27.8	28.0	28.1	28.3	28.4	28.6	28.7	28.9	13
14	29.0	29.2	29.3	29.5	29.6	29.8	29.9	30.1	30.2	30.4	14
15	30.5	30.7	30.8	31.0	31.1	31.3	31.4	31.6	31.7	31.9	15
16	32.0	32.2	32.3	32.5	32.6	32.8	32.9	33.1	33.2	33.4	16
17	33.5	33.7	33.8	34.0	34.1	34.3	34.4	34.6	34.7	34.9	17
18	35.0	35.2	35.3	35.5	35.6	35.8	35.9	36.1	36.2	36.4	18
19	36.5	36.7	36.8	37.0	37.1	37.3	37.4	37.6	37.7	37.9	19
20	38.0	38.2	38.3	38.5	38.6	38.8	38.9	39.1	39.2	39.4	20
21	39.5	39.7	39.8	40.0	40.1	40.3	40.4	40.6	40.7	40.9	21
22	41.0	41.2	41.3	41.5	41.6	41.8	41.9	42.1	42.2	42.4	22
23	42.5	42.7	42.8	43.0	43.1	43.3	43.4	43.6	43.7	43.9	23
24	44.0	44.2	44.3	44.5	44.6	44.8	44.9	45.1	45.2	45.4	24
25	45.5	45.7	45.8	46.0	46.1	46.3	46.4	46.6	46.7	46.9	25
26	47.0	47.2	47.3	47.5	47.6	47.8	47.9	48.1	48.2	48.4	26
27	48.5	48.7	48.8	49.0	49.1	49.3	49.4	49.6	49.7	49.9	27
28	50.0	50.2	50.3	50.5	50.6	50.8	50.9	51.1	51.2	51.4	28
29	51.5	51.7	51.8	52.0	52.1	52.3	52.4	52.6	52.7	52.9	29
30	53.0	53.2	53.3	53.5	53.6	53.8	53.9	54.1	54.2	54.4	30
31	54.5	54.7	54.8	55.0	55.1	55.3	55.4	55.6	55.7	55.9	31
32	56.0	56.2	56.3	56.5	56.6	56.8	56.9	57.1	57.2	57.4	32
33	57.5	57.7	57.8	58.0	58.1	58.3	58.4	58.6	58.7	58.9	33
34	59.0	59.2	59.3	59.5	59.6	59.8	59.9	60.1	60.2	60.4	34
35	60.5	60.7	60.8	61.0	61.1	61.3	61.4	61.6	61.7	61.9	35
36	62.0	62.2	62.3	62.5	62.6	62.8	62.9	63.1	63.2	63.4	36
37	63.5	63.7	63.8	64.0	64.1	64.3	64.4	64.6	64.7	64.9	37
38	65.0	65.2	65.3	65.5	65.6	65.8	65.9	66.1	66.2	66.4	38
39	66.5	66.7	66.8	67.0	67.1	67.3	67.4	67.6	67.7	67.9	39
40	68.0	68.2	68.3	68.5	68.6	68.8	68.9	69.1	69.2	69.4	40

Example—If point is 22.6 ft. above grade, how far should it be from center line to be a slope stake point? Ans. from Table 41.9. For same slopes but other widths of roadbed correct above figures by one-half difference in width of roadbed; thus in example above for 20 ft. roadbed distance will be 41.9 + (20—16)÷2 or 2 ft. added to 41.9 = 43.9. For slopes of 1 on 1 see inside of front cover.