

253

DEER GBN

ENGINEER'S

FIELD BOOK

No. 253

No 253

20.  
243  
1755-

Walker Village  
Parksides Add Jerry Hall

John W. C. C. C.  
Sept 1-1940

This Field Book is manufactured of a High Grade 100% Rag Paper Having a **WATER RESISTING SURFACE**, and is sewed with Bing Special Enamel Waterproof thread.

Made in U. S. A.



Walker

1

Note

This book No 253  
belongs to John W. Curo  
It is numbered and if lost,  
finder please return to  
save the collection of books  
A reward will be paid  
for its return.

John W. Curo  
Walker Minn  
September 1-1940

## INDEX

Walker Plat By Lyman  
 Arms Co Surveyor Cars & Crow  
 Wing Co June 4 - 1896  
 L. R. Lothrop Surveyor

Plot Pg 3-24-28-29-31-42-43-47-  
 51-53-57-65-77-79

WPA work Pg 87. Walker Village  
 Walker Plat @ Reg of Deeds office Ad.  
 Kinkle Add - Walker C-1.  
 Parkside Add - Jerry Hall Pg 111





4

Blk 14.

Dave Brassard

Lots 5-6-7-8-9- Blk 14

Original Plat of Walker  
About

Aug 25 - 1940

Earl Brassard wants  
his & line established  
and will buy a 4 ft strip  
of Front St to put up a  
building and cement wall

Aug 27 - 1940

We try to locate

BC. E of Depot 3<sup>rd</sup> Curve

O.O. = BC

ft west of H.B.

T over Sta 1-

33 foot station

Hub and back at each rail lgh

T over Sta 1 - BS on Sta 0..

Sta 2 bear 0° 31' L

3 " 0° 12' L

4 " 0° 28' L

5 " 0° 51' L

6 " 1° 16' L

7 " 1° 42' L

8 " 2° 10' L

9 " 2° 37' L

10 " 3° 05' L

11 " 3° 34' L

12 "



Aug 27 - 1940

5

R.R. Curve at depot water

$\pi$  over S<sup>1</sup>/<sub>2</sub> 2 - BS on S<sup>1</sup>/<sub>2</sub> 1

S<sup>1</sup>/<sub>2</sub> 3 bears 0° 14' L Dalley Calls

Dalley calls  
11-15 to 11-30 AM

S<sup>1</sup>/<sub>2</sub> 4 " 0° 34' L

5 " 1° 00' L

6 " 1° 28' L

7 " 1° 55' L

8 " 2° 25' L

9 " 2° 55' L

10 " 3° 23' L

11 " 3° 52' L

12 in plank crossing

Set  $\pi$  33 ft ahead

$\pi$  over S<sup>1</sup>/<sub>2</sub> 3 BS on S<sup>1</sup>/<sub>2</sub> 2

S<sup>1</sup>/<sub>2</sub> 3 BS on S<sup>1</sup>/<sub>2</sub> 2

S<sup>1</sup>/<sub>2</sub> 4 bears 0° 35' L

" 5 " 1° 07' L

" 6 " 1° 36' L

" 7 " 2° 05' L

" 8 " 2° 35' L

" 9 " 3° 04' L

" 10 " 3° 35' L

" 11 " 4° 04' L

" 12 " in plank R.R. coming

6 Aug 27-1940 Blk 14

Beginning of Curve 3° with  
spiral 33 foot Station taken  
to Pub and lock abd. set by Dalley  
with "sliding method"

0 Town Sta O.O - End of Tangent  
Tangent Beg of Curve  
estimated, Chained 27.2  
west of & Head Block

To Sta O. 135 E on & straight Track  
Sta 1 bears 0°03' L chain 0.05 Ft

2 " 0°06' L chains 0.11 Ft Left

3 " 0°13' L " 0.40 L Tang

4 " 0°26' L " 0.98 ft L

5 " 0°45' L " 2.12 ft

6 " 1°08' L " 3.85

7 " 1°32' L " 4.75 (2-)

8 " 1°58' L " 5.90 L

9 " 2°24' L " 12.20

10 " 2°52' L " 16.00

11 " 3°20' L " 20.60

12 on plank Crossing

14 " 4°42' L

Sta O. is 27.2 west of &  
Iron plate on Head Block



Walker

7

RR. Track Opp Blk 14

Sta 3 Turn  $90^{\circ}$  L @ 50., 73.4 <sup>ft</sup> 90 Hat

8 Aug 28-1940

π over I.M. at NW Cor  
Lot 9. at Daves place

on 3 foot offset  $12^{\circ}22'R$ ,  
125 ft to NE Cor Lot 5

Then I.M. @ NW Cor Lot 9

Then NE Cor Lot 5 bears  $13^{\circ}41'R$   
125 feet

1865: Find Ed Mack from  
Lake of the woods take him  
to dinner Lives in Sec 9

24 miles SW of Williams

24 " SE of War Road

6 miles NE of Ski Shoot Hill

4 miles NE of Tower

Bat  $40^{\circ}$  @ 8/21.



Aug 29-1940

9

Reed and I pick  
up Ole Larson who shows  
us I.M.S. on old Co Road  
to Shingobee

10-11-14-15-141-31

10

## Walker R.R. Track

Aug 30-1940 4 PM

X over S<sup>1</sup>/<sub>5</sub> 4 BS on S<sup>1</sup>/<sub>5</sub> 3S<sup>1</sup>/<sub>5</sub> 5 bears 0° 56' L

6 " 1° 26' L

7 " 1° 54' L

8 " 2° 24' L

9 " 2° 54' L

10 " 3° 24' L

11 " 3° 54' L

12 —

X over S<sup>1</sup>/<sub>5</sub> 5 BS on S<sup>1</sup>/<sub>5</sub> 4S<sup>1</sup>/<sub>5</sub> 6 bears 0° 58' L

7 " 1° 26' L

8 " 1° 55' L

9 " 2° 25' L

10 " 2° 55' L

11 " 3° 25' L

X over S<sup>1</sup>/<sub>5</sub> 6 BS on S<sup>1</sup>/<sub>5</sub> 5S<sup>1</sup>/<sub>5</sub> 7 bears 0° 51' L

8 " 1° 23' L

9 " 1° 55' L

10 " 2° 24' L

11 " 2° 55' L

90° L @ 75 RR spike

X over S<sup>1</sup>/<sub>5</sub> 7 BS on S<sup>1</sup>/<sub>5</sub> 6S<sup>1</sup>/<sub>5</sub> 8 bears 1° 01' L

9 " 1° 32' L

10 " 2° 01' L

11 " 2° 31' L

90° L 70 RR spike

X over S<sup>1</sup>/<sub>5</sub> 8 BS on 7S<sup>1</sup>/<sub>5</sub> 9 bears 1° 00' L

10 " 1° 28' L

11 " 1° 58' L

Turn 90° 70 ft set Hub = RR spike

Earl Valley culler  
4-50 to 5 PM  
Light rain



Walker

Relix  
Aug 30-1940

11

Turn Sl<sup>o</sup> 9 BSm 8

Sl<sup>o</sup> 10 bear 0° 57' L

" " 1° 25' L 90° L 65 ft Hat

Turn Sl<sup>o</sup> 10 BSm 9

Sl<sup>o</sup> 11 bear 1° 00' L Turn 90° @ 75 Hat

Turn Sl<sup>o</sup> 11 BSm 10

Turn 90° L 90 ft set Hat RR. Spike

Turn over Sl<sup>o</sup> 10 - 75 ft out Chain

Go 15 ft to 90 ft out set RR. Spike

Turn Sl<sup>o</sup> 9 - 65 ft out BSm 9

Continue 25 to 90 ft out Hat

Turn 70 out BSm Sl<sup>o</sup> 8 continue

20 ft set Hat 90 ft out

Turn 70 ft out @ Sl<sup>o</sup> 7 - ch 20 to 90 Hat

Turn @ 75 ft out @ Sl<sup>o</sup> 6 + 15 - 90 out Hat

All Hats = RR. spikes set 90  
ft from E of Main Line RR.  
in curve

12

Walker

Sept 18-1940

Reed and I and Dave

Brassard set 1X 36" to

1X 50" Iron pipe every 33

feet along so side Front

It on Lats 5-6-7-8-9-Bh 14



Statement

Cofy

Sept 18-1940

Dave Beasland Bill \$15.

To James Curo-Dr  
Engineer work and expense  
in survey and staking the  
line between the north end  
of Lots 5, 6, 7, 8, 9, Blk 14  
and Front Street Village of  
Walker

Note: The Lot corners are  
NOT set in this survey  
except that the NW Cor Lot 9  
and NE Cor Lot 5 are marked by  
iron pipe. The line between  
said corners along the curve  
is marked at about 33 foot  
intervals with small iron pipe.

Total Cost to Curo Fifty Bucks.  
Will charge Dave only \$15.

Recd from Dave this 18<sup>th</sup>  
day of Sept 1940 Fifteen dollars  
cash payment in full.

James Curo "  
Seal

14

Walker <sup>①</sup> Bk 23-

Sept 18-1940

Reed Exum and I at  
Walker I work all day at it  
Ho EVENING: I drive to  
Jenkins and back

Joe

Has been here -- wants Lats  
Surveyed in Block 23 for  
New Theater 1½ Lats

Reed tells Joe it will cost  
\$35 to \$50 for the survey

No word from Martha

I call M<sup>c</sup>Kinley res from  
Jenkins 20<sup>th</sup> Tell Mack to

Call Mrs Kemper at Jenkins  
if Martha comes

Tell Mrs Kemper to call  
Walker Tel Co



Harry Simon et al

Walker Blk 23

15-

Sept 19-1940 Thur

Up early - Call Reed - we eat  
at Restaurant 30 \*

7 AM we chain Minerala-  
Hve on So side Early before  
Liggio starts

Rego I.M. NW Cor Ct H & S H  
West on So side Min St

@ 70.

130

149.9

150.3 Brick NE Cor old Opp H &

239.7 NW Cor

244.7 Brick ?

300- Crack in walk

304.8 in line with cern steps

E Side Old Halil Chase

308. NE Cor " Halil "

370. in line with NW Cor

Chase Halil

370.10 Crack in side walk N. S

378.15 Crack @ outside of walk

431.50 in old side walk - 50

431.55 Crack in walk North

Over



16

③

Minnesota Ave So Side cor'd

439.6 Crack in walk also

NE Cor Old Drug Store Brick

463.7 Crack in walk

464. NW Cor yellow brick

Overlap ?

489.7 Sharp NW Cor Brick Bldg

489.75 Crack in walk

514.65 Crack in walk

514.65 NE Cor Store

Home Restaurant

539.35 Crack in walk

539.50 NW Cor Store

540.40 NE Cor

564.55 NE Cor Brick bldg

Learn Bet Oliver & Red Owl ?

589.65 Crack in walk

589.80 Line bet brick

600.00 Cut in walk

614.60 Crack in walk

615.10 Sharp NW Cor Brick

Home Cafe

639.45 Two walls join

Brick and Stucco



Walker<sup>4</sup> For Blk 23

17

Minnesota Ave - So. Side of  
West

639.65 Crack in walk

664.6 Crack Two walls

689.75 Crack

714.75

714.82

Barber Shop

714.75 Two walls

Bank and Hardware

714.82 Crack in walk

739.95 Crack in walk

740.07 NW. Cor Dark Stone

Step at Hardware

739.95 - 0.08 =

739.87 in line with West

Wall Hardware

747.85 Crack in line with

Outside of walk run-  
-ing South

757.8 Street side of Curve

802.2 Crack in line with

-- So 7

810.30 wid Crack in walk about  
in line with E Side Tony  
polvin Garage



18

Harry Simon et al  
For BK23. ⑤

- 840.95 Crack in walk in line with  
East wall Tony's driveway
- 860.05 Nail in brick wall +.25
- 860.30 NW Cor brick Bldg
- 861.18 Crack in walk
- 886.25 Crack in walk
- 883. West side wood bldg
- 895.15 NE Cor Lbr yard Bldg-wood
- 896.34 Crack in walk
- 900. cut in walk Front Lbr yard Bldg
- 941.2 Find blue mark on on cem  
base of bldg in line with  
West wall Lbr yard Bldg-wood
- 941.35 Corner of Cement  
inside square notch in walk
- 943.15 NW Cor Cem walk  
in alley
- 954.15 NE Cor Square gate post
- 960.10 NE Cor Cem Foundation  
Feed store small Bldg  
Creamery-annex
- 972.10 NW Cor Cem Found
- 984.98
- 985. NE Cor Brick Creamery



For Blk 23

(6)

Walker

19

1010.05 NW Cor Brick

Creamery

1022.3 +- NE Cor old wood

Bldg Home Laundry

1049.9 NW Cor Phillips 66

Garage

1087.9 NW Cor Brick wall

1087.95 NW Cor of base

Foundation

20 D Walker

Sept 19-1940 Contd

At the Bank I tell  
Harry Simon

Tel 27 R4 Pine Point

who will be over in an  
hour. I tell him

\$35 to \$50

Mr Elsenpeter at bank  
says it is the DeLury Lats  
that is to be surveyed viz  
Block 23 - Orig Plat Walker  
Lot 8 and E  $\frac{1}{2}$  of Lot 9

Mr Simons calls at Ct Ho  
and says I am to survey  
the whole Block 23 or  
I would have to do it any-  
-way -- they will all  
pay their share etc.

John A. Curo



8 Walker

21

Sept 19-1940

3 P.M. Co Attorney Office  
calls me to the phone  
Long distance says  
Mrs Kemper reports  
Martha at McKinley  
res in Blainey

## Walker

Sept 20-1940 Friday

Reed and Eunice in Walker

I L<sup>v</sup> Martha alone in Jenkins  
on Norton FarmL<sup>v</sup> Jenkins 9-AM

Slap at Pine River

Slip at Hackensack Drive to

Victor Martin farm 4 miles

West of Hack Then back to

Hack and out post Selway

Resort Callon Buck and

who are out fishing

1-15 Cant wait and drive  
into Walker5-30 PM. Reed and I re-  
chain Minnesota Ave

So Side

Beg @ IM NW Cor Ct Ho Blk 24  
West 70.00 in line with E Side Shell

Stain crack in walk

West edge cement = East edge

one inch wood strip = NE Cor

Block 23- Walker



BLK 23

⑩ Harry Simon  
Walker

23

Beg @ 0.0 = NE Cor BLK 23. Ch

West on properly line

60.20 in line with West wall

60.08 4' of one inch wood strip  
bet cement in crack in walk  
about in line with west side of  
brick brick

79.88 Crack in walk

80.25 in line with East wall and

Opera Ho at NE Cor

168.68 Crack in walk NW Cor Buck

Opera Ho

173.67 Crack in walk

174.70 in line with Porch - W. Sid

175 Cross + in walk chalk

200 Cross + in walk "

212.5 Cross + in walk "

225 Crack in walk N Edge

234.8 NE Cor 4x4 white square

post in line with cement  
slab on E Side. Old Haled Chose

300. Crack in walk

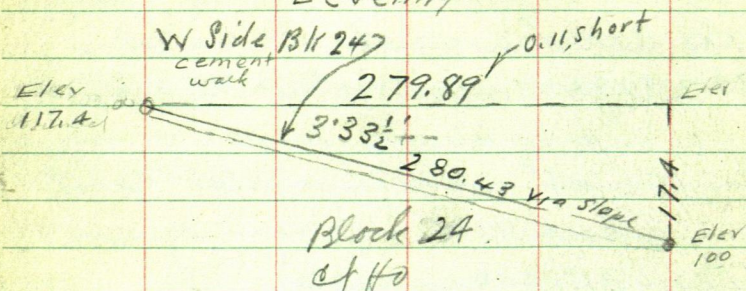
in line with West side Haled Chose

24 Harry Simon - Bert Fuller etc  
 302 Chalk mark in walk for  
 future use in 2 ft offset

Chain West side Block 24

280.43 via cement walk on  
 slope Bet I and S.

Leveling



Leveling

B.M.	+ S	H.I	- S	Elev	Grade
1				100.00	on NECR Blk 24 assumed
	12.93	112.93			
TP			0.00	112.93	

7.60 120.53 3.13 117.40  
 on cement at NW Cor Blk 24  
 light against I in

Cor



Sept 20-1940 cont'd <sup>(12)</sup> Walker

25-

Too dark to see further

+ drive to Jenkins for over  
nite

Figuring: West sid. Block 24

$$280.43 \div 17.40 = .6205 = 3^{\circ}33\frac{1}{2}'$$

$$3^{\circ}33\frac{1}{2}'$$

$$\text{Sine } .06205 \times 280.43 = 17.40$$

$$(62065)$$

$$\text{Corr } 99807 \times 280.43 = 279.89$$

$$\text{Tang } 62185 \times 279.89 = 17.405$$

26 West Side Blk 24

Sept 21-1940 Sat

Pickup Harald and  
Wilfred Miller and L. Jenkins

9 AM At Walker 10

11 AM - Reed and Wilfred L.  
Walker for Ten Mile Lake  
Harald and I work

\$ 2 to Bill for Reed's car

11 To 12 Turn IM SW Cr

BS on NW IM Chan

South e R. Halerin for Flag

20.00 set 60° spike for 20 ft offset

@ 68.90 cross in crack in cem work

@ 70.00 cut + cross in E side edge  
of Cem

Extend line

North Thru rd. Cor IM - 5 ft to

20° spike in cross + in  
Cement Square in Walk

= Sta 1

Turn sta 1 - BS. Go out IM

Turn 90° R and run



Harry Simon

Walker

27

South side Minner Ave

Dinner with Peet 80°  
Post

West on South side Minner St

On 5 Foot offset North

@ 70 Cut + in Cen = Sta 0.0

5 ft N of NE Cor Blk 23

Sta 0 ch West

$$\begin{array}{r} 375 \\ 63 \\ \hline 438 \end{array}$$

at 212.5 Run so 5.00 Cen + in  
S edge of walk. 0.20 N of S edge of Cen  
@ Lat 9 = Sta 0.0

0.0 ch so @ 10.80 NE Cor Brick  
wall sets west 25.4

@ 9.80 about NE Cor Cen step +  
ledge sets W

@ 90.8 SW Cor Brick wall Chase  
Habit sets W 25.2

@ 129.5 Hab 130. Hab

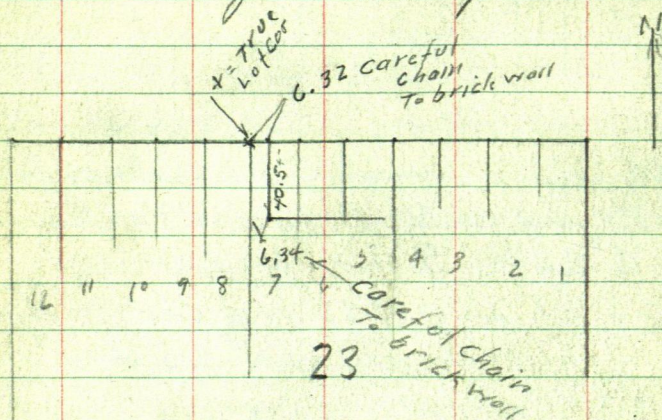
Cen step 3 x 10.9

L edge 0.85 wide on N side of Bldg  
20 long EW

Harry Simon new Show 40  
Lot 8 and East half Lot 9 also  
West 6.3 Feet of Lot 7

EXCEPT: That if he buys the Brick Wall at Ford Garage he will need another foot of Lot 7 = being West 7.30 feet of Lot 7

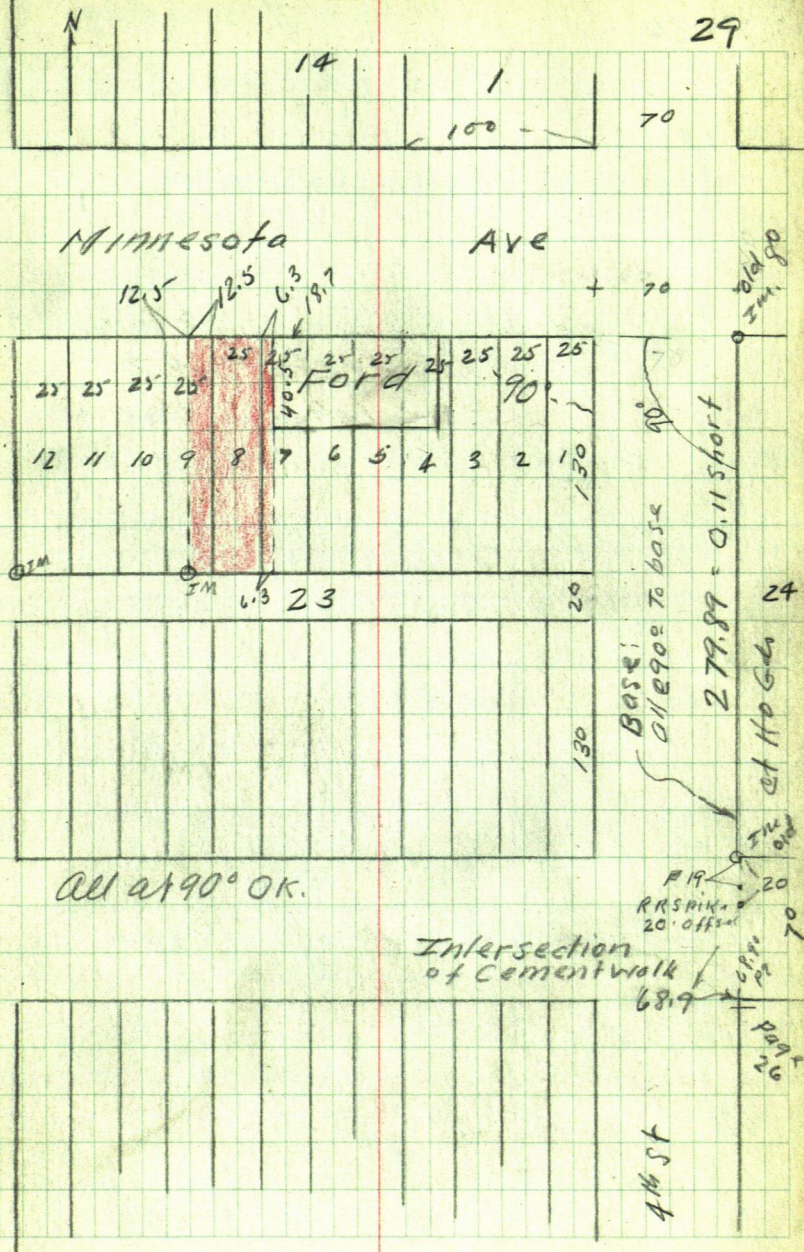
See my letter to Harry  
Simon - also pencil map



Notes: From + cross in walk = one inch N of  
SO edge of cement walk = True  
NW Cor Lat 7 being exactly 175 ft from  
NE Cor Block 23. The NW Cor of Brick wall  
Ford Gas Sets 6.32 E Cham

South 40.6 on line line to apt 6.3x  
W of SW Cor Birch wall all called  
6.3"





30

Walker Harry Lane



Walker

N. 1A

31

Main Ave

45 41.5

12

Exactly  
90°

41.5

23

279.9 Exact  
ct 40 24

13

24

130

90°

Offset

Michigan

70

12

1

130

32

12

Letter - copy

Walker Union

Sept 21-1940

Mr Harry Simon Walker Union  
Dear Sir:

Here you are! And listen:

1<sup>st</sup> Lot 8 is full - 25 ft wide by about  
129 - plus2<sup>nd</sup> Lot 9 is full 25 feet so that the East  
Half is 12.5 This gives you  
37½ feet exactly3<sup>rd</sup> It is 6.3 feet from the west  
line of Lot 7 to the west brick  
wall of the Ford Garage  
so, if you build your own wall  
you need only the west 6.30  
feet of Lot 7.But listen close: If you buy a part of  
the Ford west wall, you will need  
the west 7.3 feet of Lot 7. - That is  
if you buy a foot of wallGuess this is all. We worked  
like hell to finish but the measur-  
-ments for the Lot widths are 0.1%  
Pencil sketch herewith

John W. C. Co.



Walker Minn Oct 9-1940

Up 8-20 - Reed - Exum & Worth  
 Reed and I took over - Simon-  
 Brag - Fuller Survey

I copy deed at First Natl

Harry Simon blows in and  
 says - "Finish that survey and  
 send me your bill"

Reed listens to truck trial  
 in Ct Ho. basement

Claud Gardner - Headley -  
 Hilding Swanson re.

I write notes at Ct Ho  
 dinner at home - Paddock Ho

34

Deed

Oct 2-1940

Frank C. Bragg and Agness  
his wife To Harry E Simon and  
Minnie M. Simon; All of that part  
of Lot 7 Block 23 of the Original  
Plot of Walker . . . .

lying west of a line drawn parallel  
to the west boundary line of said  
Lot 7 and thro a point of N.W. Cor  
of the garage bldg now located on  
a portion of said Lot 7

Said strip of land herein convd  
extending from the N. To the S.  
bdry line of said Lot 7 and having  
a uniform width of approximately  
6.3 feet

Also granting an  
easement over a strip of land  
one foot wide extending the east  
side of and adjacent to the above  
described tract for use as a party  
wall . . . Easement to connect  
with sewer etc. . . . "



Note: Mr Elsenpeter calls my attention to a clause in the abstract Book F. Misc Page 621

Wm Lochran-Judges decree  
Covering Gov Lots 5, 6, 7, 8,

Sec 22-142-31

Undivided  $45/64$  interest  
and  $19/64$  interest to some  
parties Some So Dakota Lawyer  
wants a transcript of the  
whole proceedings which Mr  
Elsenpeter says will "cost too  
much"

36

Walker

Sept:

I help Bennett and Bratten  
lay out new Garage gd in Lot  
Blk 13- no charge Lose my x

Sept 17-1940 Thurs

I and Martha L. Jenkins  
at Walker at noon Red and  
Eunice at Jenkins in Bat  
Norton Ho pm.

Gene Smith of Benedict  
come to Ct Ho - to help lay out  
New Garage - Bratten is  
building for Bennett

I work 3 Hour on 12 ft offset w  
set slaker 10 ft N and wall  
value not important no charge

Jahna Curro



Oct 29-1940 Tues

Reed and I Jenkins to Pine  
River - Then to Hack - T. Victor  
Marlin Then to Walker - Call  
at Harry Roddick res  
Back to Jenkins

John at

38

Oct 30-1940 Wed

Trial-

8-AM-Rud and I L. Jenkins

8-35 am. at Cliff Loah up

Survey records

N<sup>o</sup> (561) - Secs 5-6-7-8-140-28 Merry

Surveyed

Rec.

Dec 3-1939

Harold

7<sup>th</sup> Dec

June 1-1940

562-



Walker Village

39

40

Walker Village <sup>①</sup>

May 20-1941

Elmer J. Mc Kinney

Walker - 48 married

Elmer Johnson - New Dep  
Sheriff of Can From Remus  
knows where Jim Flynn is

"Uncle Jim Flynn" to  
McKinney



Sewer ② Conservation 41  
Walker Village Bldg

May 20-1941

4" Sewer pipe in Block  
25. Begin @ SW Cor Conser-  
vation Bldg Run SW  
20 or 30 ft to a Hub P.R. Spike  
= Stal. Turn  $45^{\circ}$  L and run  
Easterly 214.10 ft to Conn-  
ect with Y. 166.0 from Man-  
hole in State Highway

7 AM - meet Mayor Grindall  
who wants the grade

Grindall drives a few  
miles out in the country to  
get Elmer J. McKinney

Foreman on P.W.A. project

8-30 at City Hall Get Dahms

Level rod. 9 AM. Fred

Grindall - McKinney and I

work till 11-40 Grindall

goes to dinner - We to a few

minutes later Meet Harry

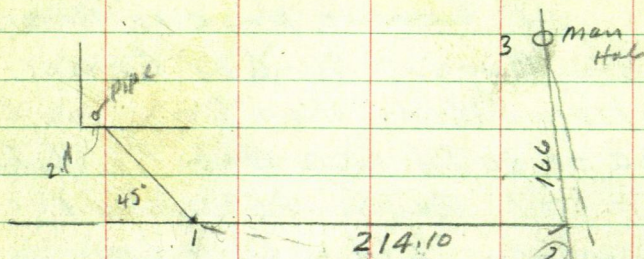
Paddock who says a Mr

Nichals was calling for me.

42

(3)  
Walker-Village

12-20 home to dinner


 $\pi$  at Sta 6 Non

East 24-48-72-96-120

144-168-192+22.10 =

214.10 Spikes over old

Sewer Every 24 feet set RR  
Spikes
 $\pi$  at Man Hole Sta 3 Focus on  
Man Hole Sta 4 - Cham T. Sta 4  
@ 50 ft set hub
Blue Print shows Connection  
from Sta 3 - viz

58.6 60.6 121.0 - 123.0

164.0 166.0 249.0 251.0

291.8 To Man Hole @ Sta 4



43

May 21-1941

3:20 P.M. Bob Dahms  
comes in with authority on  
sewer pipe

Bob's library gives nothing  
smaller than 6 inch sewer pipe  
and the drop recommended  
is Six tenths of a foot in 100 ft  
.60 = Six tenths of one % grade.

Bob says they are  
not to put in a 4" pipe



46

7

Walker Village

May 24 - 1941 Sat

Conservation Hdg

$$\begin{array}{r} 535 \\ 385 \\ \hline 150 \end{array}$$

Testing @ South side of Hdg

$$A \text{ to } B = \begin{array}{r} 5.35 - 3.85 \\ 3.85 \\ \hline 1.50 \end{array} = 1.50 \text{ in } 48.7$$

$$A \text{ to } B = 48.7 \text{ in } 1.50 = \cancel{03080082} =$$

$$\begin{array}{r} 10.50 \\ 935 \\ \hline 1.15 \end{array}$$

A to B = 48.7 Feet off 1.50

$$48.7 \text{ in } 1.5 = 03092783 = 1'40' +$$

C to D = 49.50 ft off 1.15

$$49.5 \text{ in } 1.15 = 02323232 = 1'20'$$

$$\text{Try D to C Tang} = 02323232 \times 98.2 = 2.28$$

OK. Plotting it up on 70" scale  
we find the two west walls  
parallel - almost. Done May 24/41

$$02323232 \times 98.2 = 228113824$$

Bottom of inside  
4" sewer pipe

ELCV  
100.00

Ripshide 10/10/1911

0.75  
Steps

Conservation  
Bldg

24

29,10

778

24

 $98.2 +$ 

48

72

96

120

142

168

192

91°55'

166.0

214.10

Man Hal

125.8

① RR. spikes

① Man/Hal



48

9

$$\begin{array}{r} 104.09 \\ 6.57 \\ \hline 97.52 \end{array}$$

$$\begin{array}{r} 104.09 \\ 13.84 \\ \hline 90.25 \end{array}$$

$$\begin{array}{r} 7.52 \\ 6.28 \\ \hline 13.80 \end{array}$$

$$\begin{array}{r} 91.70 \\ 90.25 \\ \hline 1.45 \end{array}$$

$$\begin{array}{r} 236 \\ 1596 \end{array}$$

$$\begin{array}{r} 90.25 \\ - 85 \\ \hline 5.25 \end{array}$$

$$\begin{array}{r} 91.60 \\ 89.40 \\ \hline 2.20 \end{array}$$

May 26-1941 Monday

Kp @ 6-7 AM Des Fred Grindall

7.15 Pick up Harold Olson road  
Buff & Berger T

Adjust level P7+1

$$\begin{array}{r} 292 \\ 146 \\ \hline 146 \\ 20 \\ \hline 6 \\ 1x \end{array}$$

$$\begin{array}{r} 104.09 \\ 1400 \\ \hline 90.09 \end{array}$$

$$\begin{array}{r} 104.09 \\ 5.47 \\ \hline 98.62 \end{array}$$

$$\begin{array}{r} 104.09 \\ 4.59 \\ \hline 99.50 \end{array}$$

$$\begin{array}{r} 104.09 \\ 4.39 \\ \hline 99.70 \end{array}$$

$$\begin{array}{r} 104.09 \\ 4.59 \\ \hline 99.50 \end{array}$$

$$\begin{array}{r} 104.09 \\ 12.31 \\ \hline 91.78 \end{array}$$

$$\begin{array}{r} 91.78 \\ 90.09 \\ \hline 1.69 \end{array}$$

$$\begin{array}{r} 214.10 \\ 23.90 \\ \hline 248.00 \\ 238. \end{array}$$

$$\begin{array}{r} 91.8 \\ 90.1 \\ \hline 1.70 \end{array}$$

$$\begin{array}{r} 24 \\ 6 \\ \hline 147 \end{array}$$



50

⑪

BM	+ S	HI	- S	Elev	Grade
1	3.27			100.00	
2		103.27	6.75	96.52	
1	5.12	105.12	8.60	100.00	96.52
2			8.60	96.52	
1	4.09	104.09		100.00	
sls			<sup>14.00</sup> 6.50 ✓		
			14.00	90.09	✓
BM					
			5.44	98.65	
			4.59	99.50	
			4.39	99.70	
			<sup>1231</sup> 5.31	91.78	✓

10512

860

9652

675

322

8.28

(12)

+750

103.27

51

675

9652

on Top of S. Mantle assumed

on " " N Mantle

105.12

9652

8.60

X Road at S. Mantle

on N Mantle O.K.

650

750

1400

To point 7.50 up = 14.00

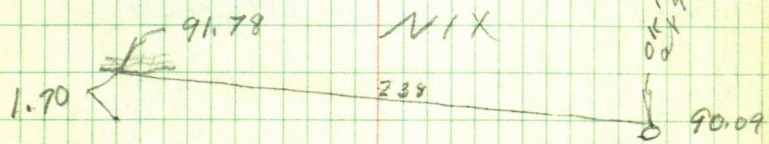
on Top of Y. East end of ditch

on RR spike 6 ft N of E End of Pipe

on RR Spike 6 ft N of N End straight pipeline

center out Edge Bottom Step Conserv Bldg <sup>Comm</sup>

7. ft above foot of wall =



Total length of line 238

$$= 6\% + 0.20 \text{ drop from } \begin{array}{r} 6 \\ 1488 \end{array} \text{ Top of Y to base of wall}$$



52

Table "A"<sup>13</sup>

May 26-1941

12	=	.22
10		.30
8		.40
6		.60
4		.96

B

12	.20
10	.23
8	.25
6	.33

Minimum  
when good  
flushing  
system is  
permitted

Table "B" Minimum with good  
flushing system 600 ft.

Elmer J. McKinney

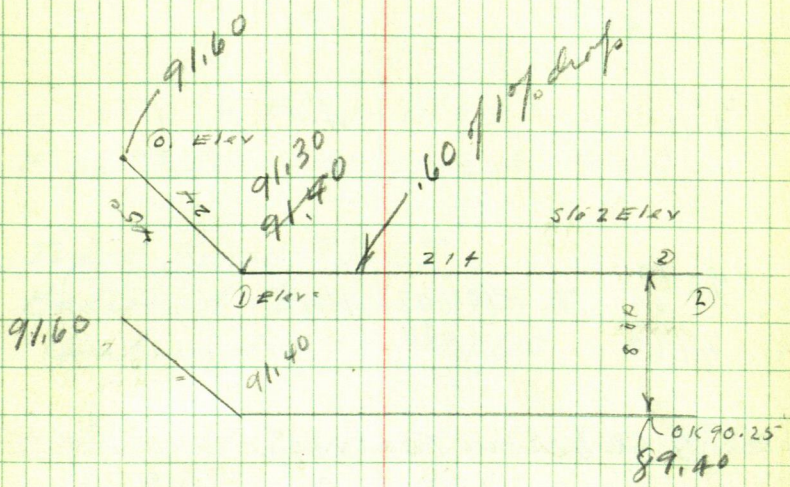
+ 7.56 + 6.28      665  
6.52 check amount      258  
1421

Check 4.39 OK on corn slip

91.60  
89.40  
2.20 drop  
1.73  
1.17

238  
1428

93.97  
90.25  
-----  
3.72



From Cement floor 6.65 To bottom  
of reb on window sill



54  
B.M. 5/6

+ S

H/

13

- S

Elev

Grade

104.09

<sup>13.84</sup>  
6.28

90.25 90.25

104.09  
11 12  
92.97

6.54

6.65  
4 47  
11.12

<sup>11 12</sup>  
4.47

92.97

92.10  
50  
91.60

104.09 11.99  
11 99  
92.10

10.50 below Foaing -

92.97  
91.60  
1.37

below Top of floor

Top of floor 92.97  
6" below

92.97

(16)

447

665

1112

55

From inside 6" 45° Elbow. measure 7.56 up  
on blue mark on cross plank 1st floor

6.28 added to 7.56 = 13.84

Elev inside Elbow on E End

+ 4.45 = 11.12 on rib bottom window sill  
Floor inside Conservation Bldg

Top of Floor 92.97

Bottom of Foaling 92.10

Bottom of Tile 91.60

Bottom of Tile under Foaling 91.60  
Conservation Bldg



56

17

May 26-1941 PM

SLABM

+ -

HI

-S

EICY

Curb

8/11 up

1

104.09

~~4.79 + 8~~  
~~12.71~~

91.30

91.30

12

104.09

~~4.07 + 8~~  
~~14.07~~

90.02

1

104.09

~~3.79 + 9~~  
~~12.79~~

91.30

9/11 up

2

~~✓ 5.07 + 9~~  
~~14.07~~

11

Rake in

91.30

4.08

95.38

536

~~1.22~~  
~~4.08~~

4.08

Raked in

90.02

4.98

95.00

6.25  
770

1895

2141  
1.28 x 6

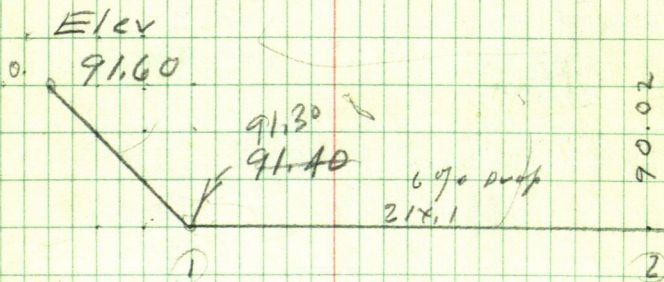
104.09  
5.45  
98.64

575

90.02

9500  
1295  
8205

7.98  
95.00



$\pi$  over Sta 1.

Checking E Elev



58

19

100 =

.60

10

.06

1

.006

2

.012

$$\begin{array}{r} 498 \\ 9 \\ \hline 13.98 \end{array}$$

$$\begin{array}{r} 90.02 \\ 498 \\ \hline 95.00 \end{array}$$

$$\begin{array}{r} 9500 \\ 9002 \\ \hline 498 \end{array}$$

$$\begin{array}{r} 625 \\ 720 \\ \hline 13.95 \end{array}$$

$$\begin{array}{r} 9500 \text{ HI} \\ 13.95 \\ \hline 81.05 \end{array}$$

$$\begin{array}{r} 9002 \\ 498 \\ \hline 9500 \text{ HI} \\ 13.95 \\ \hline 81.05 \end{array}$$

$$\begin{array}{r} 536 \\ 408 \\ \hline 128 \end{array}$$

$$\begin{array}{r} 90.02 \\ 498 \\ \hline 9500 \text{ HI} \end{array}$$

$$\begin{array}{r} 9130 \\ 128 \\ \hline 9002 \end{array}$$

$$\begin{array}{r} \text{BM } 99.02 \\ + 498 \\ \hline 104.00 \end{array}$$

$$\begin{array}{r} 104.00 \text{ HI} \\ 13.95 \\ \hline 90.05 \end{array}$$

Get Fred Grindall on  
rain the 200 feet H.I. 0.28  
and Rock in



60

Lark run <sup>20</sup> to nail head

BOM 84

+ S

147

- S

Elev

Grid

91.30 - 4.12 9542

May 26-1941

9130

61

(21)

416  
9542

~~12~~

Harald Olson worked  
from 6:45 AM to 5:45 PM  
= 11 Hours  $\frac{1}{2}$  off for lunch  
=  $10\frac{1}{2}$  Hours

For Village of Walker

John W. C.



Charlie Hanson Survey  
Lots 1-2-Block 14  
Orig Plot of Walker

June 12-1941 Charlie Hanson  
called at Co Surveyor Office  
at Ho Walker and I told him  
\$15-- and if he did not have all  
the money \$20-

June 16-1941

He is in a hurry

Schultz and I work at Ten  
mile Lake

64

<sup>2</sup>  
 Charlie Hanson

130.00

110.

110

61.7020

191.7

120

130

130.00

23.669.2

153.5

153.5

199.2

130.

83.4

191.7

130

213.4

153.5113

38.2

191.7

243

199.20

140

153.5153.527

38.2

45.7

165

2430

382

213.4

75

457

113

29.620

133

69.2

31

461

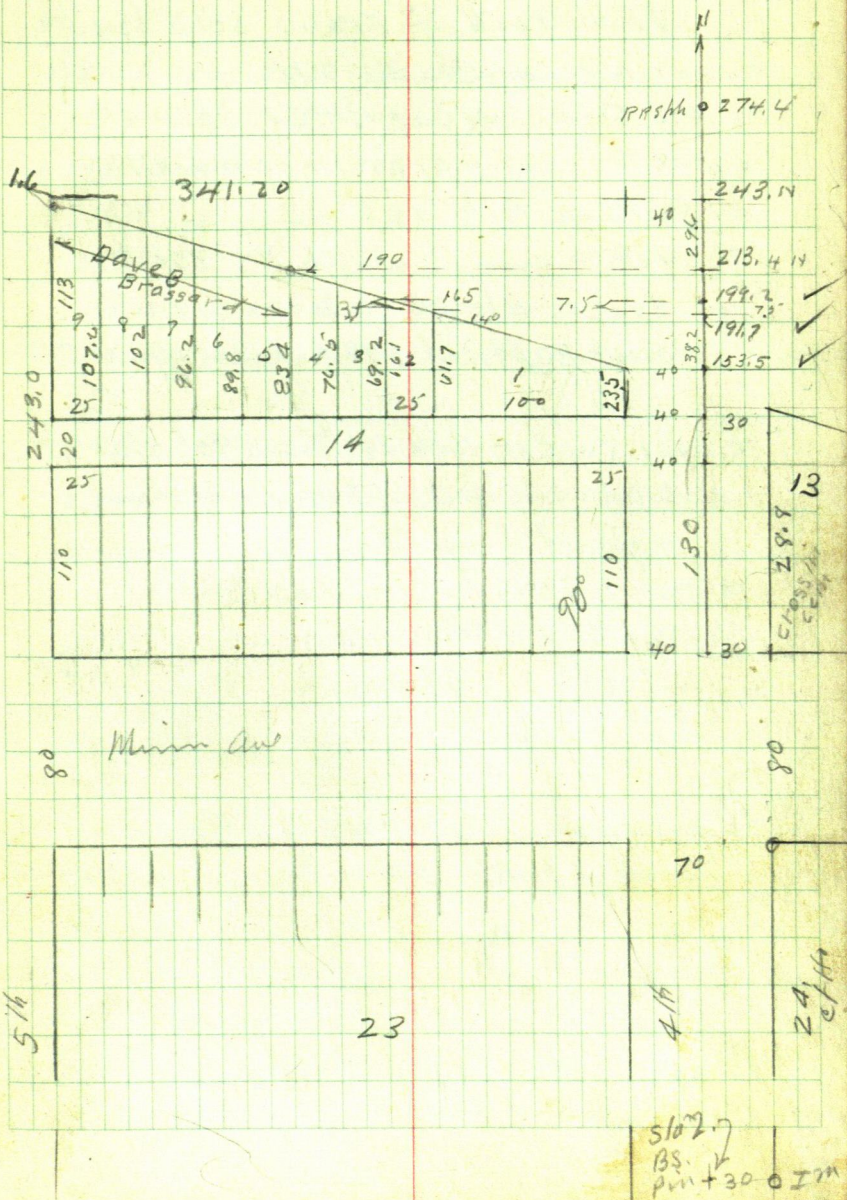


June 17-1941 Walker

P 73

65

Charlie Hanson



66

4

June 17-1941

9 AM. Pickup Franck Schultze ch  
 X over NW cor Blk 24 IM  
 BS 300' So on SW cor Blk 24 Run  
 North 80' cut + cross in cem walk  
 SW cor Blk 13?

X over + cross in walk BS 380 ft's  
 on SW cor Blk 24 Turned 90° L Run  
 West 30 ft set 60° spike on offset  
 = Slo 1

X over SW cor Blk 24 Turn 90° Run  
 West 30 ft set 60° spike in street  
 of offset line Slo N 2

X over slo N: 1 BS on Slo 2 - Run  
 North @ 90° to Minnesota Ave

@ 110 Set Slo 3. = 60° spike

" 130 " " 4 " " "

" 153.5 " " 5 " " "

Quit for dinner 11-45..

Back at 1-45 PM



⑤

PM.

⋈ over Sta 5 BS on Sta 2 Continue  
North on 30 ft offset line

@ 191.7 Set 60" spike for Sta #6 ✓

① @ 199.2 " " " " " 7 ok ✓

213.4 " " " " " 8

243.0 " " " " " 9

#9 is E RR, Main Line

252 " RR spike " 10

281.7 RR spike under ⋈ " 11

⋈ over Sta 9, NW cor DAVE'S NEW Brick Bldg  
beams N

274.1 Y

June 18-1941

Schulze and I Lv @ 7:45

Look over NW Cor Block 14

Dave's New Bldg seems to be OK?

The Iron Set By Co Surveyor Elmer  
B. Horst at the NW Cor

Block 13- is gone-

Concret in its place

Dave Brassard shows me  
over the new Bldg "my son built this"  
Dave says

We walk to 10" Iron pipe  $1\frac{1}{2}$   
and perhaps 12 ft long

Dave says this is S Side of 20  
ft Alley and sets at  
NW Cor Lat 10 Blk 14

8-15 to 8-30 Schulze and I  
drive back to my house and  
get the T & Cham

Buy @

North @ 20 ft Blue chalk  
mark in west edge of  
Concret wall 10 ft thick  
Leaving East

at 86.9 sharp SW Cor of



## Davis Place

@ 111.19 sharp NW cor

@ 131.20 in line with inside of  
new Brick wall at so edge  
of Cem side walk

and N edge of new Cement  
platform 4" Hi

@ 132. NW cor Cem Plat form  
where it would intersect  
if it was not broken off

at 133. flag @ East edge of  
Cem side walk

From the same  $1\frac{1}{2} \times 10$  ft pipe  
Set by Hart for NW cor Lab  
Bk 14 ch

South

@ 0.10 cor wood building at E 0.80

@ 60.65 NW cor sharp cor Cem

@ 60.8 sharp NW cor Ocean Plat

@ 111.32 Sharp SW cor Cem

NE Cor Block 14

From Q. RR track chaul

4.95 ft bet Rails

From Q. Do rail ch 87.5

to + in walk = 90' from Q

Ray says that when  
he built the new part  
of Dover Bldg his orders  
were to measure

"20 ft" from NW cor  
of old Post

this distance was  
only 19.80 to Horn  
iron pipe which is now  
gone

Mr Ray says he got  
the Bldg a little in the  
street

Now we lay the SE  
Cor of ~~Block~~ new bldg



Tower Sla 9-Pg 67

B Son Sla 2. Turn  $90^{\circ}$  N  
NW Cor Block 14 bear  
341.2 N on 1.60 So

Tower Hub 243. Pg 67

NW Cor Blk 14 bears  
589' 45' W 341.2

Testing Ross Bldg

From Sla 1. SE Cor of base  
bear west 40.55 and 40.70 to  
main wall

2-30 PM L

Tower 274.4 ch N 46.6 To 321 from  
old bent Iron SE Cor ft. cen  
walk

From Pipe bear N  $33^{\circ}20'E$  541.4  
Iron sets at SE Cor 5 ft cement walk  
which runs north about 300 ft  
at which point E side of walk  
seems to be about  $1\frac{1}{2}$  ft less far  
west = 29.5 ft from our line extended

72

Hanson - Walker<sup>10</sup>

Toren 199.2 Turn 90° Rm

West 165.0 set Hrb. - too close to  
♀ RR.Toren 191.7 Turn 90° in west @ 12415 Hrb  
@ 140 Hrb at 165. Hrb



Charlie Hanson Survey  
Lots 1-2 - Block 14.

June 20 - 1941

9-AM. Pick up Frank  
Schultz. Hanson wants  
his lines. I tell him "See  
the Village Council"

Hanson and I call on  
Harry Anderson Councilman  
where we find Fred Grindall  
I tell them they should  
set aside two or three  
hundred dollars for their  
City Engineer

Grindall says he will bring  
it up before the Council  
Anderson seems to be  
Forth hand.

I tell Hanson I will set  
his lines "within a foot"  
and will set True lines -  
later. He is to stay a foot  
away from my lines E & W  
R of W M T I R R. John W. Curo

June 20-1941 Could  
Block 14 - Orig. Pitt Walker

See Page 65

Lot 2.

Turn Sta 199.2 BS-on Sta 2  
Turn  $90^{\circ}$  L. and Chan 165  
Set wood Hub Temp NW Cor  
Lot 2.

From E RR. 90 feet cut

3.1 So of Temp NE Cor Lot 2

Turn Sta 130 Turn  $90^{\circ}$  West

@ 40 ft set Temp SE Cor Lot 1

+100 = 140 Temp SE Cor Lot 2

@ 165 Temp SW Cor Lot 2

Turn Temp SW Cor Lot 2 Turn  
 $90^{\circ}$  L and Chan 66.1 To RR  
spike set 165 from Sta 199.2

So that the West side Lot  
2 is only 66.1 = 3.1 short

Nolo! The Temp SW Cor Lot  
2 may go a foot to



$$4.37\frac{1}{4} \quad \pi \quad + \quad 18 \quad 4.37\frac{1}{4}$$

$$+ \quad - \quad 5 \quad 4.37\frac{1}{4}$$

$$3.37$$

$$0.77\frac{1}{2}$$

Covered By

Frank Shalls F.B.

Gene Smith Benedict

B.M. # Vane slow - St Cloud

Beck Conductor

Ole Broughton Benedict

Check

Walker Min 7/31-1941

Fst Natl Bk Walker

To John Jacob Cuss

Services as Elev Engr

State Theatre Bldg

\$250

A. S.

76

Clote Bacon

Oct 29-1941

Working for Clote Bacon- Reed  
and I 9-am at Ct Ho plat

See Page 65. 79-29

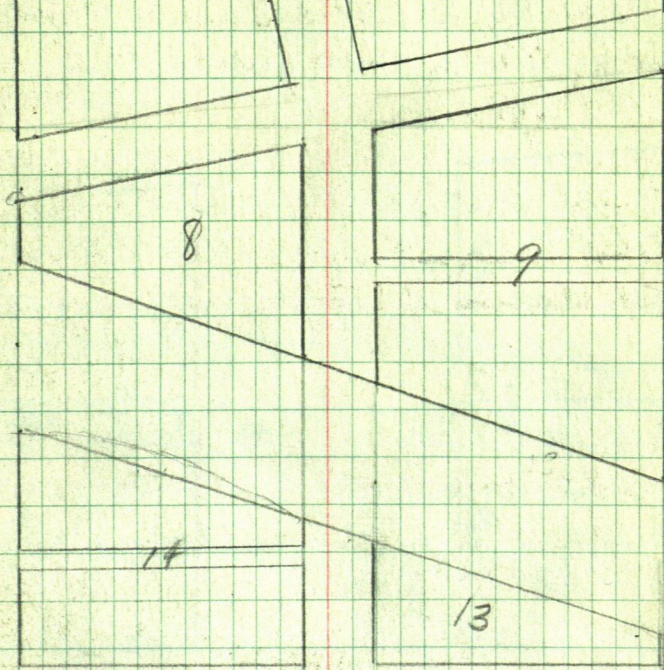
Snow and sleet. Reed and I  
look over the sheets and plan  
all day in the Ct Ho

Oct 30-1941

Cooler- Cloudy-mist



Oct 29-1941



20

MAIN AV

23

24

70

70

70

25

154-5

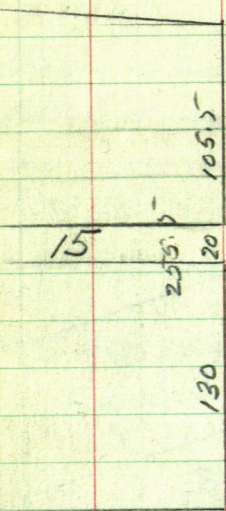
154-4

32

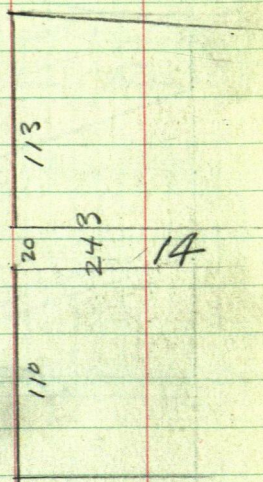
31

30

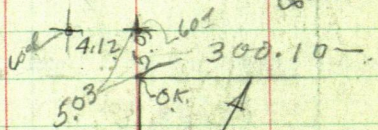
78



2 Ave



2 Minn



Note. 300.0 Hat  
300.10 Calalch

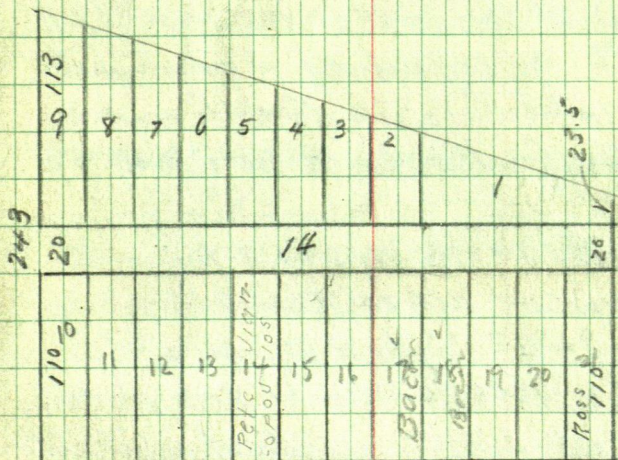
75 148 70



# Walker Village

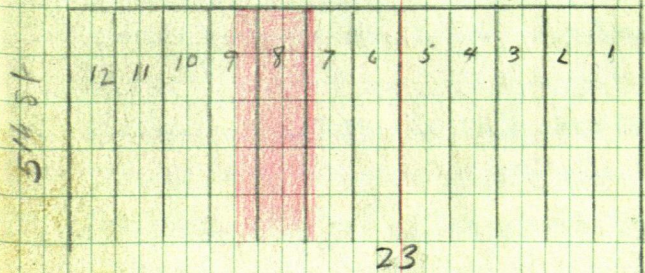
110  
20  
113  
273

8000  
503  
8497



Bennett  
Garage

## 2 Minn Ave



80

5.03

St Ho

25

80

Bacon - Lots 17-18 B 14

Walker Minn Oct 30-1941 THURS

Wake Reed who will come to it to  
to help me with Bacon Survey

Prepare notes at it to and  
wait for Reed. Reed cannot  
help and later Kernow & wife to  
Duluth I pick up Frank Shells

PM - about 12-30 Frank and I

Buff & Berger  $\pi$  300' ch

Turn Slo 1 = old capped 2" pipe at  
NW COR Blk 24. Count Hoger

BS on Slo 2 = Capped 2" pipe at SW

COR Blk 24 - Back Ims. perma

-nent - fixed undisputed pts on

North 5.03 to Slo 3. = 60' spike in

Seam cross + in cement walk

$\pi$  over Slo 3. Turn 90° L and run  
West on 5.03 foot offset

At 70.00 mark red + in Cem

Slo 4. = West side of 4th. St.

From Slo 4 - Chain

West on 5.03 ft offset line

At 0.10 of a foot drive 20d.  
spike in wood. Crook in cem



West on line 5.03 ft N of so line  
 Minn Ave Block 23. could  
 @ 75-100-125-150-175 drive  
 60° spike in sand Nale: Can  
 walk is now coming up-

@ 300.10 hit old 40 d. spike in  
 Crack in Cement +

Nale-300 ft last summer is now  
 300.10 - 300.10 = Slo 5

Nale- Slo 5 is EXACTLY 5.03 ft N of  
 TRUE NW Cor of Block 23. at old  
 Chase Hotel Corner

Slo 5 ch west 4.12 To 40 d spike in  
 + Crack in cement walk

T over Slo 4 + 75 set T which  
 shows the NW Cor of new Brick Bldg  
 to be too far west  $\frac{1}{2}$  ft +-

T over Slo 4 + 125 - on 5.03 ft  
 offset line BS on Slo 3. Turn 90° Rn  
 North.  $66.75 = 66.78$  RR. spike Hub on  
 Brick +  $13.22 = 80$ . Set 2x36" pipe  
 Temp Cor to Lats 16-17 Blk 14  
 continue 100 ft N set 2x36" pipe  
 Temp. pt for NW Cor Bacon new Bldg

North continue 10 ft set  $2 \times 36"$  pipe  
for temporary North Corner of Lats  
16-17 Blk 14 Then across Alley  
@ 120- RR spike in & Alley @ 126.5 RR  
spike Hub in Alley @ 130. ft for N side  
of alley SW Cor of Char Hanson  
new plat set 0.10 of ft Nord  
0.65 of ft E NW Cor Hanson Bldg  
0.82 East of our line Extended

80 Im. + 100 Im

80 + 110. Im

80 + 120 Hub

80 + 126.5 Hub

80 + 130 = 10 SW

Cor Hanson new Bldg set East 0.65

NW Cor Hanson new Bldg set

0.82 E

I take Shells home @ 4-15

and drive Coal of IM 5 myself

4-30 Club Bacon helps me

Cham from IM 100 East 49.55 ft

1. NW Cor New Bldg

Nat'l New Bldg appears to be  
0.45 of foot over on Lat 18

Bacon owns Lats 17-18 Blk 14

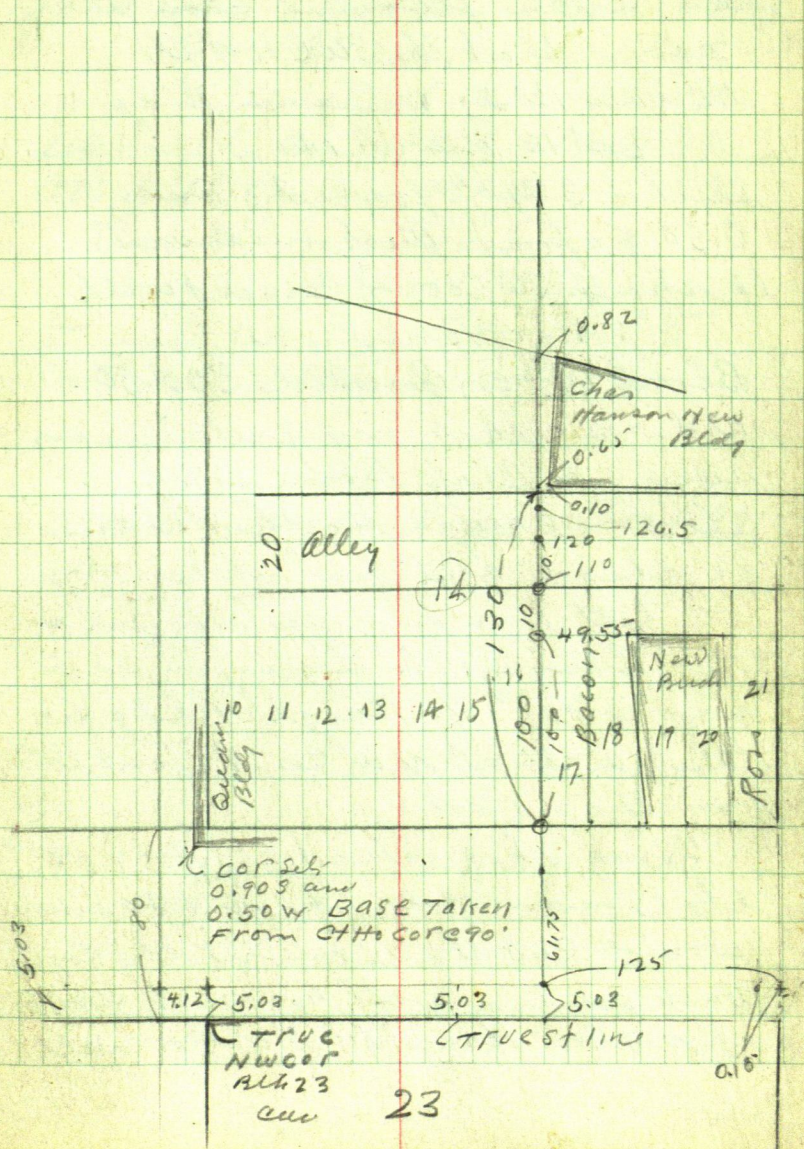
Home of 5 Pucc. Shells  $3\frac{1}{2}$  lbs @ 57 =

\$1.75

Jahnew Coo



Oct 31 - 1941 Friday  
 Ant. no 5 Feb 10 AM.



84 Oct 31-1941 cont

Clab Bocon

Checking Blk Corner Blk 14

10 AM- Elsenpeter and Janitor  
Reed help me flag and chain and  
I find that the SW Co of the  
McGarry Bldg or Queen Bldg  
Lat 10 Block 14.

Sticks 0.90 of a foot So and  
0.50 of a foot West measured  
to sharp SW Cor of Cement walk  
This would leave

Block 14 - on So Side 300.50  
wid - so that my preliminary  
survey for Clab Bocon is OK.

Close: Enough so that he can  
go ahead and put up his bldg  
I tell him and John Born so  
Basing the survey on it He  
gets @ 90°. Do Bright Bldg viz  
West wall at NW Cor 1/2 foot low  
for E But

Using the extra half foot at  
the Queen bldg the N & So line  
would cut the seam in the Cem  
walk in line with his west wall  
at NW Cor Bright's SW Cor will



stick half a foot or more into  
the street even with the half  
foot gained at the Ocean Bldg

Bob Oliver says there  
is a Judicial Mon. (WJ Mon)  
under the sidewalk about 3 ft  
SW of the Ocean Bldg

See M<sup>c</sup>Gay Court Case

I will charge Bacon \$15  
only Dinner at home

PM

work on Baker Plat Book 231?

March 6 - 1942 Friday

Working for the Village of  
Walker

9 To 10 P.M. I met with the  
Village Council. Georgia  
Morical Village Recorder  
Robert Oliver Mayor

I agree to establish property  
lines and set grade stakes  
as City Engineer on WPA.

projects. Estimate - two weeks  
work @ \$35.00 week or \$1.00 an hour.

As I have to cancel my  
other work to work this this  
Village work the promise to advance  
me \$35. "expense money" to be  
deducted from my wages

John W. Cur



88

## Wather Village <sup>2</sup>

March 7-1942 - Bob Oliver joins  
over the work with me.

Reed and I hunt records and  
Block Corner - work late on plat - 11-30 PM.  
 $87.5 = 8-7 \text{ to } 11-30 = 4\frac{1}{2} = 12\frac{1}{2} \text{ Hours}$

March 8 - Sunday -- Locating and Irons  
preliminary work and checking plat 10 hrs

March 9-1942 - up early work in am  
To Beamed & back <sup>4 hrs</sup> to cancel my  
Beamed jobs 4 Hours gone  
work 4th 4 Hours PM. 5th in PM = 9

March 10-1942 Tues

Bob Oliver and Harry Anderson  
in their car find me near Sch Ho  
We all drive to Bailey Lbr Co  
where I get one bundle of lath  
chgd to the City

Bob says Inspector is coming  
this PM and we must rush

I pick up Reed and we set line  
of stakes on E side new quarter  
on Second St Kinkles Add

March 10-1942 Contd

P.M. I call on Mrs Moricats and  
make out 'Expense' bill as per  
Bill.

Walker Union Mar 10-1942  
Village of Walker Cars Co Union  
To John W Cuno

Services as City Engr. Setting  
grade stakes and establishing  
street lines

35 Hours @ \$1.00 = \$35.00

WPA Project John W Cuno

Before Georgia Moricats Oil Rec  
March 10-1942



Time Sheet Working for Walker as City Engineer & Mayor

WPA Project

March 1942

6 7 8 9 10 11 12 13 14 15

John W. Carson

Reed Carson

Bob Oliver

Harry Anderson

Harold Olson

- 12.5 10 9 8 8 8

8 8 - - 8 8

14 - - - -

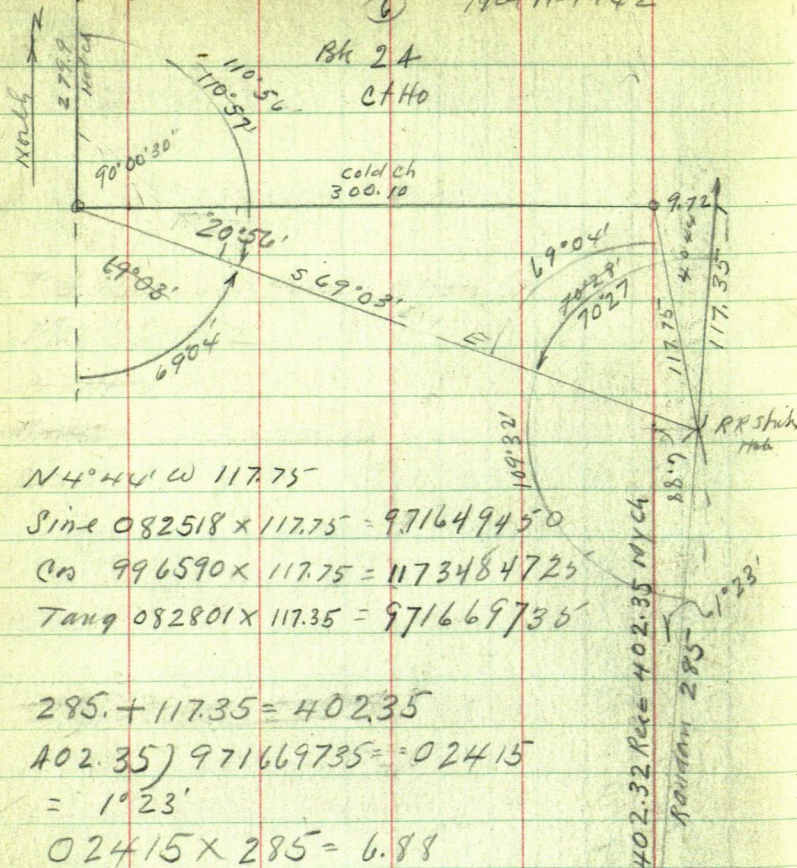
- - - - 4 4

6

⑥

Mar 11-1942

Bk 24  
Ct Ho



N 4° 44' W 117.75'

Sine  $082518 \times 117.75 = 971649450$

Co  $996590 \times 117.75 = 1173484725$

Tang  $082801 \times 117.35 = 971669735$

$285 + 117.35 = 402.35$

$402.35 \div 971669735 = 0.02415$

$= 1^{\circ} 23'$

$0.02415 \times 285 = 6.88$

Set by Greenox.

NECOR Bk 3  
Kinkte Add

Reed Curo and Haval  
also work PM.

Run by Reed and also



7

93

70

70

Record  
280

C.H.  
24

Conv.  
25

Record  
300

Michigan

Third St

Ave

70

31

70

30

130

130

130

Recorded plot  
142.32  
443.48 43

130

443.48 43

142.32

Wisconsin

Ave

60

3

Third St

4

400

70

150

150

70

70

Sch Gds

70



94



CHHO

March 12-1942

R Michigan

Ave

70

Not corrected 6.88

Blk 31

orig plat

RR spike  
on line

DIVISION LINE

70

285.44  
1.23

511

130

Blk 30

orig plat

BLOCK 2  
Kink add

BLOCK 2

2

Kinkles  
add

RR spike

60

WISCONSIN

RR spike  
on line

RR spike

Ave 60

2" pipe at the  
cor set 15  
years ago by  
John Green

Blk 3

" " = RR spikes set by crew  
in this surveyFind stone in top  
e 15' WSet RR spike Huber  
run 50 ftset by  
Green only

IM

150.0

70

70

90

158.57

third st

30

40

96

Eisenhower Lab 1-2-3

Blk 4 Kinkles add

Blk 4





96 March 16-1941

Reed and I all day localizing corner  
in Parkside Add - Calif. Sleet Snow  
8 Hour

March 17-1942

10 AM to 6 PM John Floro survey

75° killed Floro for dinner

Heavy storm all PM.

March 18-1942.

Reed and I all AM on 3<sup>rd</sup> St  
Kinkie Add to Walker

See Plat Pg 95

S  $11^{\circ}57'E$  179.6 To RR spike 2m on top =

$$\text{Sine } 207058 \times 179.6 = 37.19$$

$$\text{Cos } 978329 \times 179.6 = 175.71$$

$$\text{Tang } 211645 \times 175.71 = 37.18$$



April 6-1942

See Lals 15x16 Block 4

Kinkle's Add To Walker

Supt of Schools

98

April 16-1942

Read and I set in st 35 ft E and  
 35 ft S of SW Cor Blk 23 ch  
 South 90° @ 713.7 Hub on hill  
 + 53.62 = 767.32 set in st

Turn 90° L @ 25 set Hub Temp SW CO  
 Block Kinkley's add

90° R. set hub SE Cor Blk  
 at Church

*Ron aling lath pickels for M line*

713.7 Hub  
53.62  
 767.32

35.00  
 130.00  
 71.16  
 71.16  
 60.00  
400.00  
 767.32

767.32 set Hub then

90° L 25. Set Hub Temp SW Cor of  
 Blk  
 Then



Bennett Gar

N

CH

24

CH

Conservation  
Bldg

90

33

58

25

36

Quam

Narrow St

130

142.32

60

400

25

90

April - 22-1944

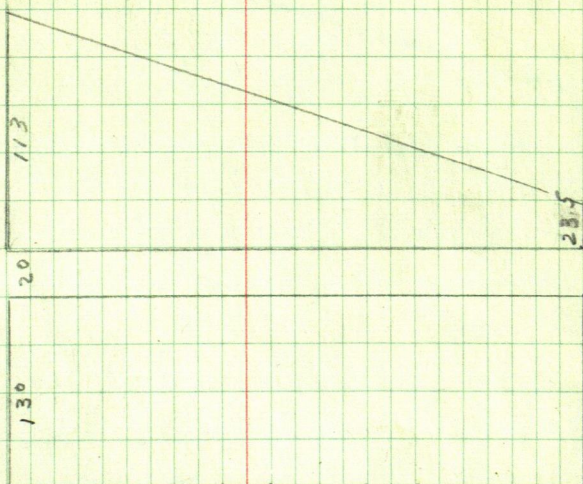
Walker Village

(101)

Lot 14 Block 14

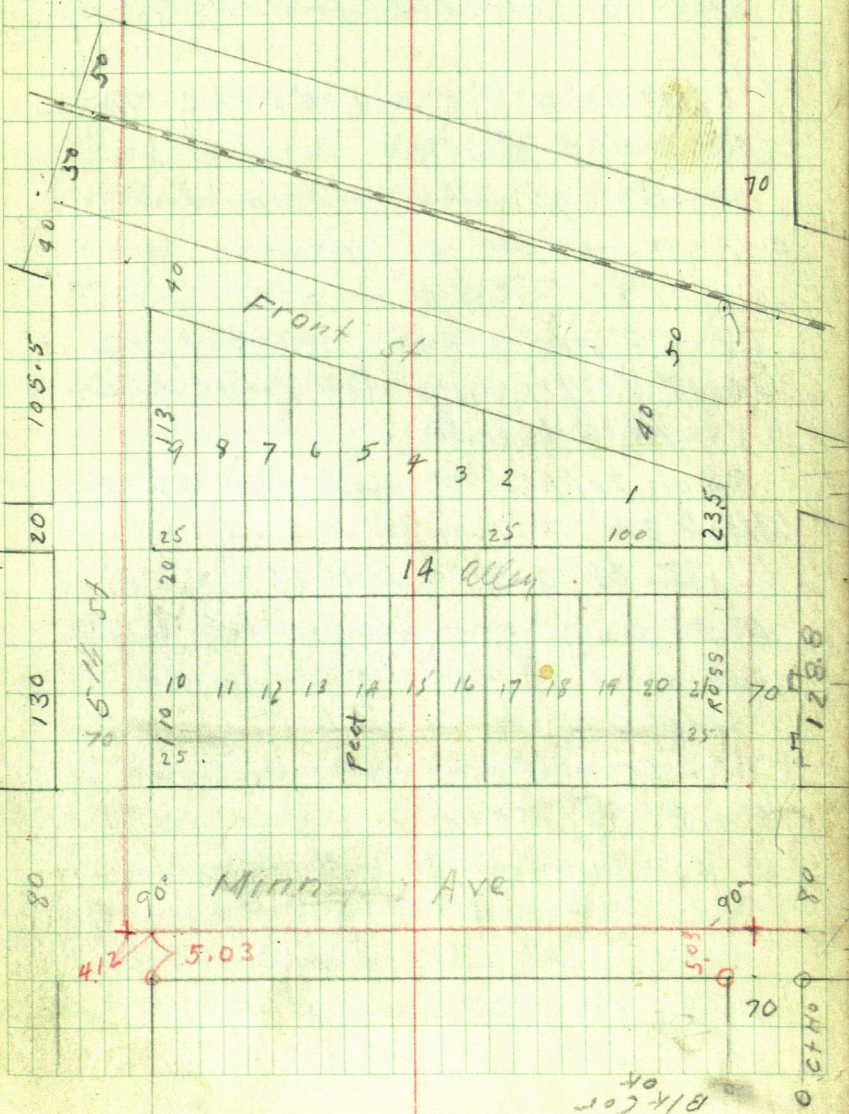
For Pete J. Iannopoulos

See Page 83-79





April 22-1944 Sat  
Survey of Lot 14-Block 14



104 Walker Village

June 17-1944 Sat

Block 14. Orig Plat

Survey of Lot 14 Bk 14 for Reet <sup>3</sup>/<sub>15</sub>

1<sup>st</sup> Harold and I will get the shape of the dam Block

Lets go! 10.00 AM. Cloudy. Cool

Buff & OK. New 300' chi tape

POVE 2" pipe in cement at NW Cor  
Court Ho grounds A of Block 24  
Orig Plat of Walker

BS on Tapped 2" Galv Pipe at SW Cor  
Block 24 Turn 90° R. and chain  
West 70.00 ft Set 60° spike in  
E edge of one inch wood strip  
bet cement slabs of sidewalk  
= NE Cor Block 23.

Transit telescope and run  
East 061 cen line

@ 300 Corn in South edge of  
Cement walk 2 inches from S  
edge of walk which extends West  
20 ft +- = True NE Cor Blk 24



From the NE Cor Block 24

Continue East 70 ft and set  
60° spike at extreme East edge  
of N-S Cement walk

True NW Cor Block 25

Continue East 85.7 set RR  
spike in Boulevard for Perma-  
-nent Point

Talal Chain 455.7 ft

Extending this line East  
Cuts north edge of 6" Hard-  
-wood ties which stands  
about 2 ft East

Go over NE Cor Bldg 23

BS East of flag at RR spike  
455.7 Turn 90° L.

Transit theorese and put  
chalk mark 6 ft up on

NE Cor of Shell Station  
2 inches west of East side

Indicating that this Bldg  
sets 2 inches in 4<sup>th</sup> Street  
Shell Bldg sets 20' +- 80  
of sidewalk

X still over TRUE NE COR  
 Block 23 Focus East on flag  
 at 455.7 Turn  $90^{\circ}$  L and run  
 North on West side of 4th St  
 At 79.5 SE COR of Ross Bldg  
 set West. 57 of a foot  
 @ 80 ft set 60<sup>d</sup> spike for SE COR  
 Blk 14. @ 80 + 19.75 set RR spike  
 .67 of a foot E of NE COR Ross Bldg  
 all taken at base of  
 sharp Cor of Brick or Tile Bldg  
 20.2 x 24.06

X still at NE COR Blk 23  
 Chain from SE COR Blk 14 N  
 @ 153.5 set 60<sup>d</sup> spike for  
 NE COR Blk 14. C 243. set  
 60<sup>d</sup> spike in bet rails of  
 rail track to a point which  
 should be in line with and 300  
 ft from the NE COR of Blk 14  
 From 243 Coilmen North  
 @ 29.5 set 60<sup>d</sup> spike @  
 31.85 put Cor of 18x18 Corn  
 block into Cor of Warehouse



These points have been very  
carefully taken as permanent  
points from which to make  
future surveys or adjustments  
X over 243. N 128 50 on +  
at Shell station Turn

90° R and run

West Parallel with Minnesota  
Ave. run

West @ 75-76 - 125. 175. 300 ft

60° spikes for future use

@ 305.42 drive 60° spike in  
Crack in E. Cam sidewalk

@ 370.30 Chalk mark on E  
side of John Scrimpf Bldg

At the NW Cor of Bk 14  
the west side of the new brick  
Bldg just built by Dave  
Brassard on Lot 9. appears  
to be 70 ft apart West of our 300  
ft spike

Our 60° spike 300 ft from X  
is 1.85 ft too close to E of RR.

being 88.15 ft from E of track

Chained on Circle to nearest pt  
of E track

The Temporary NE corner spike  
243 at NE corner Blk 14 is  
exactly 90 ft from E of RR  
track chained on a circle  
to get the shortest point

It appears that the NE corner  
of the Dave Brassard bldg is  
O.K. 90 ft from E RR.

But appears to stick 0.70 of  
a foot over into 5th St

Dirt bet Brassard Bldg and  
Simpf Bldgs 0.40 short on  
69.60 ft

However I surveyed  
and established the NW corner  
of Blk 14 for Dave Brassard  
last year and placed it in  
line with the original Rich  
Restaurant which has stood  
on 5th st for many years

This Brassard Bldg  
newly built last year is only  
an addition to the original  
Dave Brassard Restaurant and  
sets in line on 5th st



Note:

in staking the ground for this addition to the original Brass-  
- and bldg which has stood  
there 20 to 40 years and is  
a substantial well established  
Monument and has been  
recognized for all time as  
the East side of 5th St  
the only thing I could do  
was to stake the new addi-  
tion - in exact line with  
the front of the old bldg

①

111

Walker, Parkside Add

Working For G. H. Hall

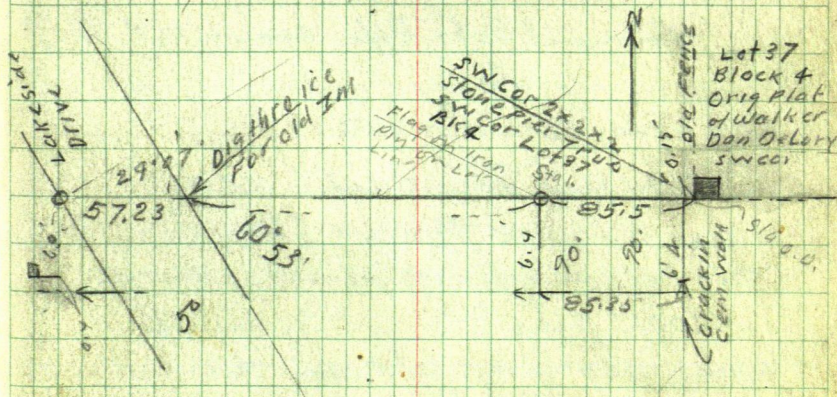
July 1944 Gerry Hall Wants his Lats Surveyed in Block 1 and 2.

Parkside Add

NOV 1- To 10 - 1944 I try to locate add

Dec 10 to 20 1944 I find some  
Dec 23-1944 Check 89 to LK shore

Dec 27-1944 Dan DeLury tells me where  
to find SW Cor Lot 37-Blk 4-Old Plat  
2X2X2 ft Stone pier Extreme SW Cor



$$60^{\circ}53' = 29^{\circ}07'$$

$$\text{Sine } 496590$$

$$\cos 873631) 50. (= 57.23324$$

$$30 = 34.34$$

$$60 = 68.68$$

$$66 = 75.55$$

$$80 = 91.57$$

Parkside Add to Walker Book D Page 71  
Reg of deeds office



## Dec 27-1944 continued

1-PM. Pick up Ronny Russell Kauffman 15"  
 who will be working for Jerry Hall (not me)  
 we work till 3-30 PM =  $2\frac{1}{2}$  Hours for Ronny  
 $50^\circ$  or  $60^\circ$  an hour  $2\frac{1}{2} \times 60 = \$1.50$

I work half the night on all valves & water  
 My 2<sup>nd</sup> night in Room #7, Lake Shore Hotel &c

## Dec 28-1944. Thursday

I work all AM in CtHs - Ronny telephones  
 at 11-40 AM and I tell him to be at CtHs 1 PM  
 Dinner at Bob's Cafe Beaver 35¢

PM

1 PM Ronny arrives 1-30 we Lu we work  
 till 4-30 PM and drive back to CtHs  
 where I figure width of Cleveland Blvd  
 then back on work 30 minutes more  
 About 5-45 I drive Ronny home  
 $5 \text{ Hours } @ 60^\circ = \$3.00$  for Ronny Total \$4.50

Time Working for Gerry Hall		SUN
John W. Laro	20 21 22 23 24 25 26 27 28 29 30 31	
EXP	SUN	1 1 1 1
Car	0	
Ronny Kaufman Ch	0	
	2H 5H 4H 5H 30M 30 30	0
	3,50 3,00 2,70 3,30	0
	0	0
<hr/>		
Cairo Room 7-Lake Shore Hotel @ 81.		SUN
SUN	10 11 12 13 14 15 16 17 18 19 20 21 22 23 24 25 26 27 28 29 30 31	
	LA 4	
	CH 4	

(3)



Dec 29-1944 Friday

Cloudy - 2" Snow last nite S wind. warmer  
All AM. in Ctho P.M

1-PM Ronny calls at Ctho - #30 LV

Hunt for a place on hi' cut bank on N Side

P.R. to west Set Buett  $\pi$  over N Rail

Focus E along tangent Turn  $90^\circ$  L

and run 57.6' to 30' spike on Tap

Run 90' So 111.7 Set 30' nail in line  
with N. end of wall of house

Chained from N. rail

Hub  $57.6 + 2.5 = 60.10$  from  $\&$  RR.

From 60.10 ch back So 10.1 Set 30' nail

50 ft from  $\&$  back for RR. Rqway

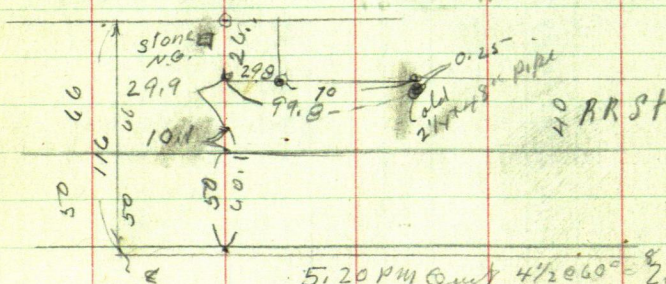
From 60.1 ch N 29.9 to 30' nail 90 ft

from  $\&$  RR. Then 26. To 116.0 - on N Side 66

ft street = Rail Road Street extended

Now 66 ft wide ston sets 1.10 vx 1.50 So 1

Hub 116.



5:20 PM Only  $4\frac{1}{2} @ 60^\circ = 2.70$





①

116 Dec 30-1944 Sat

11 AM - pick up Ronny we work till  
1 PM Dinner 2 PM. or later, back  
on work. 5.30 quit = 117.5.30 =

5 Hours + 30 minutes for Ronny  
@ 60¢ = \$3.30 car drove up L.S. at  
at Bennett garage

Dec 31-1944 Sunday no work  
still at Room #7 Lake Shore Hotel  
Walker. car still in garage

I call Carl Ryan at Jenkins  
and tell him to pin note on P.O.  
door for Doris telling her I can't come  
Tel. 1/3/45

Jan 1-1945 New Year Monday  
All day at C.H. Walker - Room 7  
at Hotel. Cold

Jan 2-1945 Tues! Commissioners  
meet. Fix my pay @ \$15

Get Sat. vils expense ch \$35.  
from Jerry Hall ch dated Dec 28-44

③ 1945  
Harry Hall-Walker

117

Jan 3rd Wed Still Cold  
Pay Bennett Malar Co \$  
repair & storage

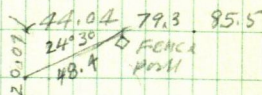
Jan 4 - 5<sup>th</sup> 1945 still cold and  
windy - Can't work - Still at Room 7

Jan 6 - 1945 Sat -

Cloudy - no wind 3 PM, pick up  
young Clyde Menz 15 -  
Grandson of Charles Anderson  
Tel 153 R. Walker

Clyde helps me chain 3 to 4 PM  
50° to Clyde

87.10  
24°

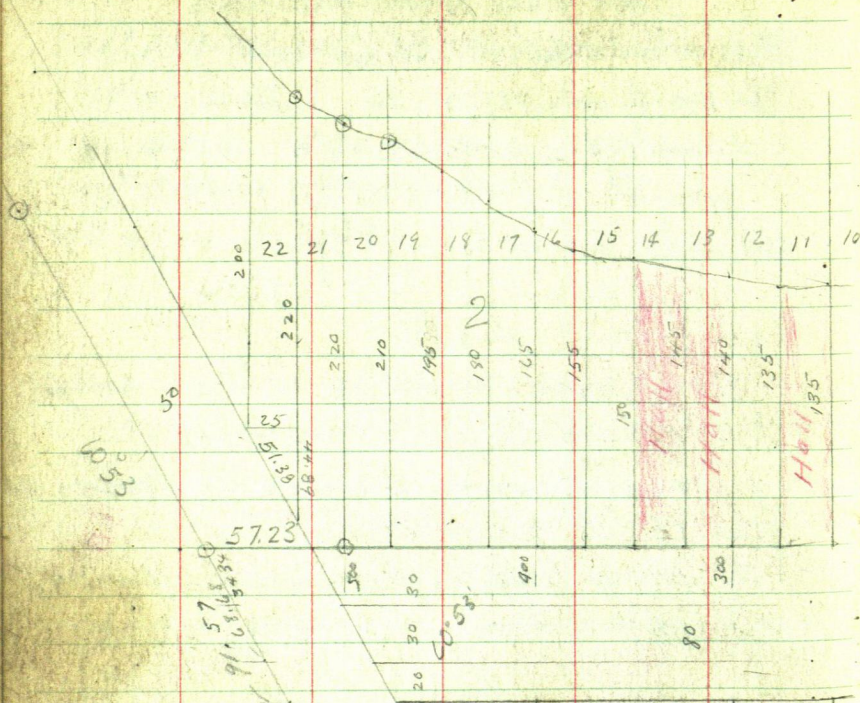


24°<sup>30'</sup> Down 48.4 Ft

$\sin 24^\circ \sin 414693 \times 48.4 = 20.07$  DOWN

$\cos 24^\circ \cos 909961 \times 48.4 = 44.04$  Forward





$$60.53^\circ = 29.07^\circ$$

$$511 \times 486590X$$

$$603 \times 873631 \times 30 = 34.34$$

$$\times 60 = 68.68$$

$$\times 80 = 91.57$$

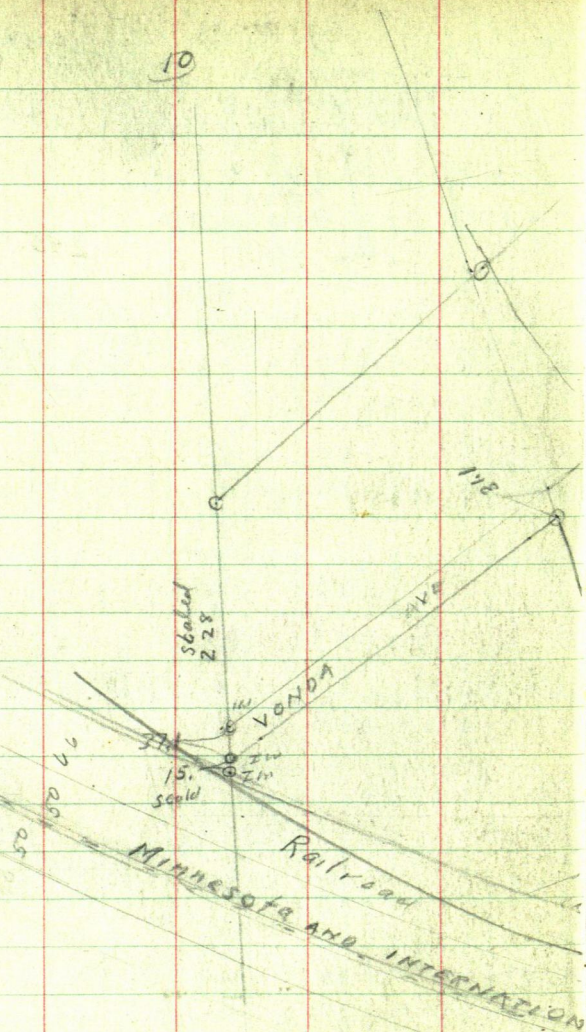
$$486590 \times 25 = 51.38$$

$$\times 51.38 = 25$$

$$873631 \times 51.39 = 44.89$$









121

BK  
7.

37  
Bk 4  
origelt  
DeLury

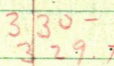
"NG"

Note 8/7  
west end of st

3149



288.9  
248.8  
28.6









124 - 1945

(14)

Jan 1

2

3

Jan 4

5

6

7

8

9

Jan 10 - 1-PM Pickup Ferdinand Ferd  
Quit @ 6.15 Zink 5 hrs @ 60° 83,

Jan 11-1945 - 10 AM zink at LK shore 1-7.180  
Dinner at Daves - I pay \$1.10 Quit 6.15 = 7 @ 60 = \$4.20  
Got ck \$100. Nelson Mfg Co Pdt Nol 25 - D. 14.50  
pd also \$10. on Car mlt bal due Bk 826 +  
Supper @ Daves Cof. 60¢  
Still at Room 7-

Jan 12-1945 Zink worked 10 To 6 = 7 @ 60° 83 H. 20  
I pay for our dinner at Babr 95¢

Jan 13-1945 Sat

Still at Room #7. LK Shore Hotel-Walker, Minn  
Ferd Zink helps me from 1 PM to 7 PM  
= 6 Hours @ 60¢ = \$3.60

buy sounding rod from Bailey Hardware  
10 ft @ 70¢ = 70¢ plus Culling pipe 25¢

Break Bailey Lbr ice drill - Bowman  
welds it 50. meals approx 50¢ 40¢ 65¢

Send \$20. P.O. Order to Farmers

Illat Bank to apply on 100 val. 475°  
paid Bal 52.50 This \$20 paid on 52.50  
Bal 32.50 + interest

Jan 14-1945 Sunday warm -

All day in room 7 - LK Shore Hotel Walker

Jan 15-1945 - Make out income tax

pay Harry Poddook \$3. for rain

2-PM Matinee 40¢ 35¢

Jan 16-1945 T. Ashley point on

Imr Blanksmith \$3. Int<sup>2</sup>

Iron - air ch



126 Jan 17-1945 <sup>16</sup> Wed

Cloudy - warm - snowing - palm plates 35°  
buy Links 15°

1 PM - pickup Ferd' Zink 1-PM  
still snowing work till 5-30 PM -  
4 1/2 Hour @ 60° \$2.70

Ferdinand Zink @ 60°

Jan 10-1945 worked Hrs 5 @ 60° 3.00

" 11 " " " 7 " " 4.20

" 12 " " " 7 " " 4.20

" 13 " " " 6 " " 3.60

" 17 " " " 4 1/2 " 2.70

Total \$17.70

I tell Gerry Hall he owes me \$150.00  
plus cost of help - He refuses to pay  
but leaves me his check at Lk Shore Hotel  
ck \$50. Total on deposit 46.08

I give ck \$10 to John Whiteberg <sup>10.00</sup> Room

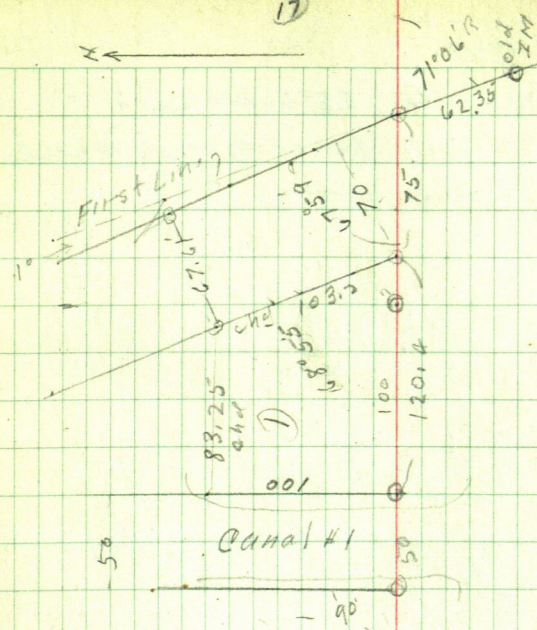
I "Loan" F. Zink Till Holl pays him <sup>ck</sup> 36.08

Bat in Bank 17.70

12.38

(17)

←



50

Canal #1

001

1 2 3 4 5 6 7 8 9 10 11 12 13 14

90

50

100

120.4

103.5

83.25

71.06

62.35

67.6

First Line



128 Jan 18-1945

Storming a little -  $25^{\circ}$  above zero

I deposit Ck  $50 = \$10 - 40$  - at Fst. North Waller

130

D

POKESIDE ADD T. WALKER

WALKER MINN JULY 31-1947

LAWRENCE JONES

HARRY & VIOLA SKOW.





132

N<sub>1</sub>

13

5th st

Ro.

Minn Ave



# Walker Sidewalk Levels

133

See Page 79 Sept 15-1947

3-PM Call Bat Post

8 1/2' 1

100

14

20

Naustvold

110

ROSS

70

1288

Bennett

101.58

2

Minn Ave

80

Ch 140

134

RMS	+	HI	-	Elev
1	5.44	105.44		100
2			3.86	101.58
	5.09	106.27	5.05	101.62
	3.48	105.10		
			4.63	100.47
			4.00	101.10
			4.30	100.8

4.36, 100.74 A

Pod Read 4.79

5.06 100.04 B

Should be  
4.71 Italy way



on Ross Corner

- Mt. Hanson's Co

North end of Ross Cement walk  
Hanson Door & side

New State Hanson's Co

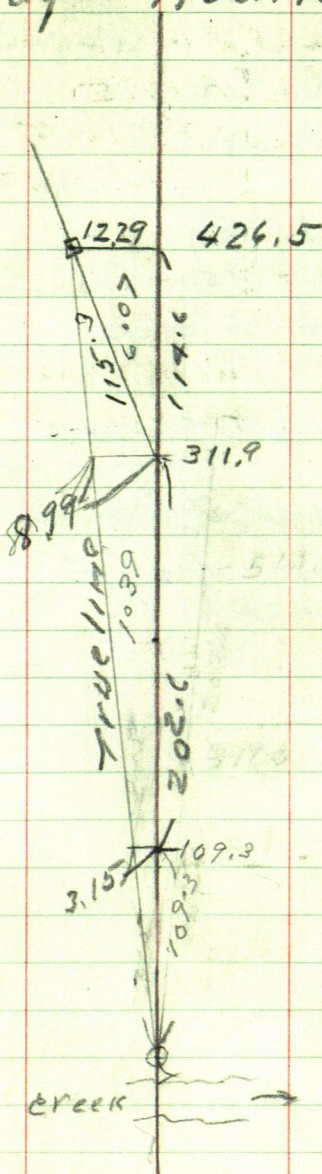
outside of walk at Dams in line with  
property - line 2

136

1 Ralph Yontsey  
Lot 24

Lake May

Auditors Plat





Lot 24

2

Ralph Yontsey/37

Oct 14, 1948 Thursday  
Harold and I at Lx May  
Met Walter Smiglewski  
Lived on Lot 23 for 26 years  
Lot 22 and 23 belongs to Mrs  
Dickerson who lives in part of  
Hoon Lot 22 on the Creek

Walter shows us old fence  
post bet Lots 23-24





(4)

Lot 24

Ralph Yontsey 139

Menahga Mtn

Tower IM NE Cor. Lot 24

Turn L  $2^{\circ}12'$ 

True N Line of lot 24

Chain 220' and set pt for IM.

True NE Cor lot 24.

Tower on site on NE Cor

Turn L  $100^{\circ}43'$  and E line

of lot 24 - 219 set pt. for IM

SE Cor Lot 24

From SE Cor chain West

220' From NW Cor chain

S  $225'$  set pt at intersection

for SW Cor lot 24

Tower SW Cor lot 24

Site N  $13^{\circ}50'E$  on NW Corand run S  $28^{\circ}30'E$  75' ft

to pt for IM. continue

15' ft set pt on bank of lake

140

lv bill for staking out  
lot 24 Auditors Plot  
of Lake May for Ralph  
Yontsey at the bank

200-  
515  
19485

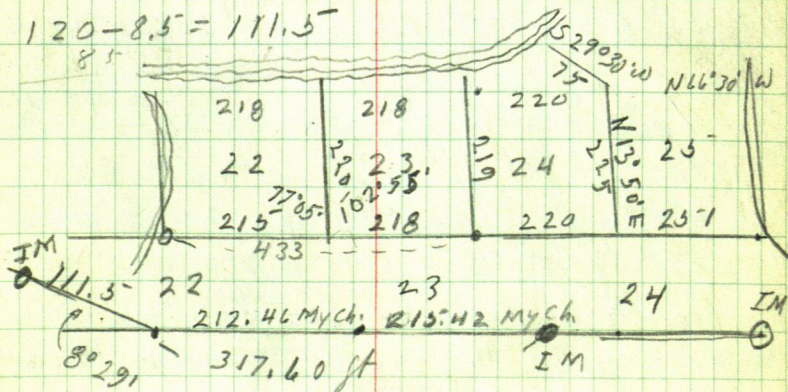


D-94-95 in Reg. of Deeds Office  
 Lot 23 of Auditor's Plat. 141  
 on May Lake Next to Walker Motel  
 Mrs. Smiglewski I think

Sept 7-1953 Ed + I go to Lot 23  
 and check line run by J.W. Euro +  
 I on Oct 14 1948

Tower NE cor Lot 24 Site W or NW  
 Cor - IMs and run E @ 100.7 hub  
 @ 294.85' hub @ 300' ~~IM on creek bank~~  
 NE cor lot 22 bears R S. or S of our  
 random line - as we can not see IM @ NE  
 corner Lot 22 from hub 294.85' we extend  
 our random line E 17.60 to hub Tower 317.60 E  
 IM NE Cor lot 22 bears S or R  $8^{\circ}29'$

$$120 - 8.5 = 111.5$$



$$8^{\circ}29'$$

since  $1475.22 \times 111.5 = 16.45$   
 Cosine  $989059 \times 111.5 = 110.28$

$$\begin{array}{r} 317.6 \\ 110.28 \\ \hline 427.88 \end{array}$$

$$\begin{array}{r} 215 \\ 218 \\ \hline 433 \end{array}$$

142

Plat shows distance from NE cor  
Lot 22 to NE cor. Lot 24 to be

433 ft I find the distance to be

427.88 making the distance

5.12 short

$5.12 \div 433 = .0118245$  short for each foot

218 E goes W - 258 to 215.42

correction is

$427.88 \div 16.45 = .03844536 = 2^{\circ}12'$

so the North line from NE cor  
Lot 22 runs to NE cor Lot 24 from  
there it turns L.  $2^{\circ}12'$  across Lot 24

<sup>74 4 3 4 12 2</sup>  
03844536

but 29485-

19222680

30756288

15378144

34600824

76890723

113356143

294.85-

215.42:

79.43 W

294.85

<sup>179 060</sup>  
102 55  
17



Walker Block 28

34.4

143

Sunday 23-1949

W.H. Mallory is buying block 28  
Original Plat of Walker if it lays  
right I am going to set Temp  
markers at the four corners  
so he can see how it looks

Ernest Swift comes to Walker  
to help me was to be here at 9 o'clock  
but does not come until 11-15-  
We go to the NW cor of block 29. IM  
T over said NW cor. site S on IM  
130 ft Turn 90° L and run along  
S side of street @ 70 set spike  
for Temp. SW cor said lot 28  
 $+ 25 + 25 + 25 + 25 + 25 + 54.7$

we set spike as follows  
from E side of street we chain  
E 25 ft set 60 d. spike @ 50 set 60 d  
spike @ 75 set 60 d. spike @ 179.7  
set 60 d spike Temp NE cor  
BLK. 28 T over SE cor BLK  
site N on NE cor BLK Turn 90° R  
+ run E 70 ft find 1" IM  
hit trees + tool house T over NE  
cor lot 3 BLK 28 site West on IM

144

NE cor BIK. 29 Turn L  $90^\circ$   
& turn South 130 ft at  $60^\circ$   
spike for SE cor lot 3 BIK. 28  
Then SE cor Lot 3 BIK 28.  
Site N on NE cor said lot  
Turn R  $90^\circ$  & turn E @ 20-  
at  $60^\circ$  spike SE cor lot 4 BIK  
28 @ 50 at  $60^\circ$  spike SE cor  
lot 5. @ 34.6 at  $60^\circ$  spike  
in line with woven wire  
fence N+S. 2 ft S of cor Post  
of fence.

All points are Temp.



E 550 ft measured along lake shore  
Sec 7 - 70+1 142-31 145

County Attorney Office  
want to know where the  
buildings set at Silver Spring  
Resort in regards to the M+I R.R.  
right of way wants a plat for  
court hearing.

Monday 6 - 1930

Glen Miller & I Lu Walker @  
10 o'clock about drive to Silver  
Springs Resort we can not locate  
the I.M. set in (1914+-) as I did  
not take the plat of subdivision  
of sec. 7. - 142-31 we go back to  
Court House & get Plat Gert calls  
we go to my place for dinner

P.M.

Take Gert & John to Glen place  
and Glen & I drive on to Silver  
springs we locate the I.M.s

Go over south rail of M+I R.R.  
site S on Sec corner & run  
see next page.

146

No. 1. Cabin

SW cor N 42° 43' W 131.9 23 X  
 SE " N 34° 12' W 117.5 24.5 end  
 NE " N 29° W 9. 136.3

N 2 Cabin new siding 20.4 x 20.4

SW cor N 46° 45' W 184.7  
 SE cor N 42° 43' W 145.3

Told No. 1

NE cor N 62° 55' W 20.6 x 22.4  
 SE " N 64° W 109.7  
 SW " N 65° 24' W 113.6

206,

224.8

S. end W. end  
 19.8 x 20.6



52166 S. of IM

147

From center of S. rail of  
RR on Tru. Sec. line bet Sec  
78-142-31 from curve of  
RR.

+25 N 85° 43' W

+50 N 85° 19' W

+75 N 84° 56' W

Sta 1 N 84° 34' W

+25 N 84° 10' W

+50 N 83° 54' W

+75 N 83° 26' W

Sta 2 N 83° 02' W

+25 N 82° 39' W

+50 N 82° 18' W

+75 N 81° 57' W

Sta 3 N 81° 36' W

Second T. W.

SE Cor. N 66° 40' W 124.6 5X4

SW Cor N 67° 08' W 128.6

Spit about 4 o'clock -

148 March. Monday 20. 1950

Alm. & I are 10-30

Town S. rail RR. Tract

Bldg. S side

Office

Parish NW Cor S  $30^{\circ}25'W$  102.2

NE Cor S  $19^{\circ}49'W$  95.0

NE " S  $14^{\circ}30'W$  103.

SE " S  $12^{\circ}42'W$  115.3

Sheds

NW S  $72^{\circ}15'W$  130.9

NE S  $70^{\circ}13'W$  121.9

SE S  $64^{\circ}35'W$  129.0

ice ho.

NE S  $63^{\circ}W$  129.9

SE of garage S  $54^{\circ}20'W$  146.4

Tol.

NW S  $53^{\circ}39'W$  156.

NE S  $52^{\circ}41'W$  153.

SE S  $51^{\circ}33'W$  155.7.

Stada 240 N  $1^{\circ}8'W$  lake shore

" 310 N  $28^{\circ}W$

260 N  $13^{\circ}30'E$

290 N  $8^{\circ}40'W$

305 N  $26^{\circ}30'W$

310 N  $42^{\circ}15'W$

280 N  $65^{\circ}25'W$



From intersection of E Line  
No 2 & S rail M & I RR  
Site N on true line Turn  
L and run N 82° 02' W 250 ft

Tower 250 BS-S 82° 02' E on & Rail  
& run.

Bldg. N<sup>o</sup> 3 white siding  
SE cor N 42° 47' E 141.9  
SW " N 34° 30' E 130.7  
NW " N 31° E 149.7

Bldg. N<sup>o</sup> 4 Log siding up & down  
SE cor N 24° 25' E 136.2  
SW " N 11° 10' E 132.7  
NW " N 15° 21' E 152.8

Totht N<sup>o</sup> tower

Bldg N<sup>o</sup> 5 Log siding up & down  
NE cor N 0° 10' W 206.7  
SE " N 0° 53' W 183.9  
SW " N 8° 11' W 188.4

Bldg N<sup>o</sup> 6

NE cor N 11° 55' W 218.4  
SE cor N 13° 30' W 199.4  
SW cor N 17° 53' W 205.

150

Total N  $7^{\circ}10'E$  131.4  
 NE Cor ~~N  $12^{\circ}50'E$~~   
 SE " N  $7^{\circ}E$  127.3  
 SW " N  $5^{\circ}08'E$  127.8

Total  
 NE Cor N  $13^{\circ}48'W$  72.9  
 SE " N  $14^{\circ}55'W$  69.0  
 SW 70.6

Total  
 NE Cor N  $26^{\circ}04'W$  107.3  
 SE " N  $27^{\circ}05'W$  103.6  
 SW " N  $29^{\circ}W$  105.5

Tract S. rail

From 250 on

@ 275. N  $78^{\circ}14'W$   
 300- N  $77^{\circ}47'W$  ✓  
 325- N  $77^{\circ}22'W$   
 350 N  $76^{\circ}58'W$  ✓  
 375 N  $76^{\circ}36'W$   
 400 N  $76^{\circ}14'W$  ✓  
 425 N  $76^{\circ}01'W$   
 450 N  $75^{\circ}37'W$   
 475 N  $75^{\circ}13'W$   
 500 N  $74^{\circ}48'W$



~~Foot~~

finish and drive home  
arrive home 1.06 P.M.

@ 1-53 = Glen comes over wants  
to take the car to run home  
O.K.

2 1/2 hr for Glen

152

Walker Minn.

May 11-1950 C. Bowman  
call at the office his father  
is giving him the S  $\frac{1}{4}$  of  
lot 17 of Auditor Plat of Lot 6 -  
Sec 22-142-31 and part  
of Lot 18 of said Auditors Plat =  
75 ft along the old Grade S  
and turning E 90° to said  
old Grade. to E line of Lot 18  
of said Plat.

May 12. C Bowman stops  
at office he will be off work  
@ 3 o'clock and I am to go with  
him. He has found the NE cor  
EM of Lot 17 of said Plat.  
We will look for the SE cor of 18  
and NW of 19 which are on the  
same line 102 ft apart there  
might be one at SE of 17 which is  
NE of Lot 18 of said Plat. but  
plat does not show an iron at this pt.

Book 102-A is the Book used  
by Horst when he made the Auditors  
Plat and he charged the county for 100  
irons @ 50¢



May 12 - 1950.

153

I check the Auditors Plat and deed of Nordbys says he has the N  $\frac{3}{4}$  of Lot 17 of said Plat.

Bowman way to be at the office at 3 o'clock it is now 3-35-

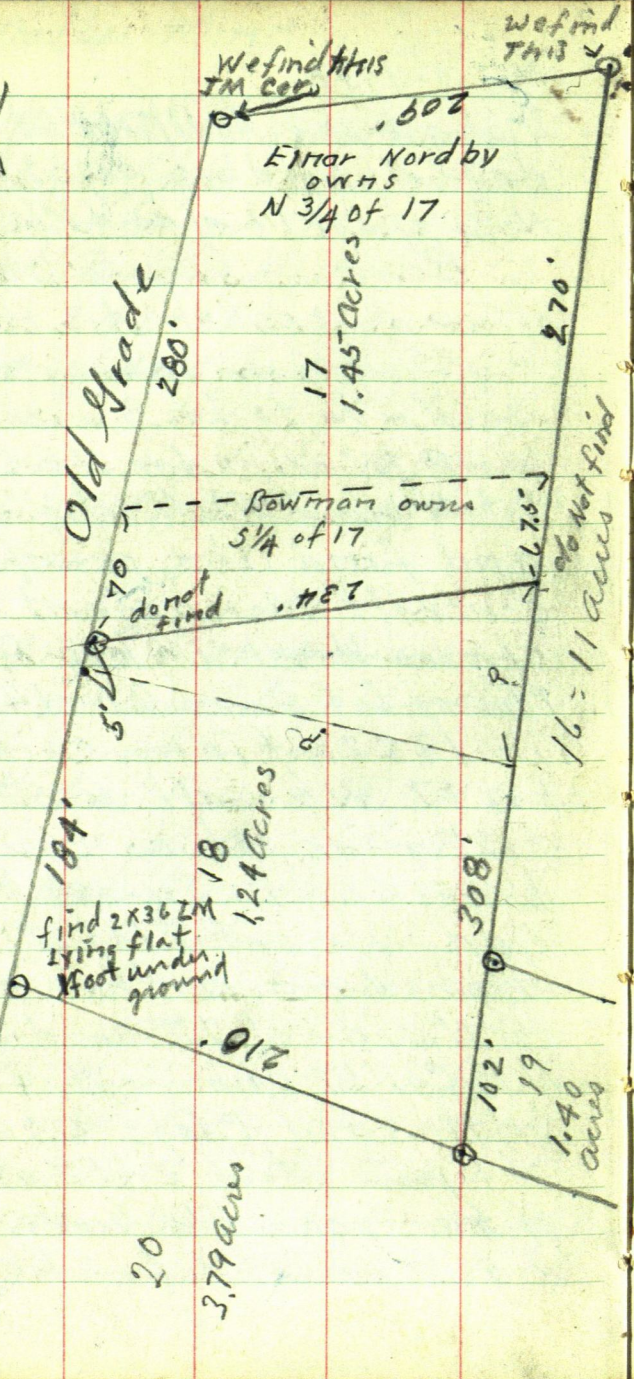
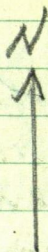
Bowman comes about 3-45- we drive to Lot 8 Lucas and walk to point for NE corner of Lot 17 said Plat. dig around and find the re-inforced concrete Monument set by Elmer Horst in his Auditors Plat of Lot 5 Sec. 22 - 142-31 in 1922. from said NE Cor Lot 17 we walk West and find a 2" pipe which must have been set in survey of Parkside Add. We set Flag at NE cor 17 and one in this 2" pipe on N side of 17 and from NE Cor 17 chain W. in line with said Flags @ 209 we set pin about 2 ft E of E edge of bar. road old grade. and dig down and find the



154

See Horst Notes in Book 102 A  
 This book was in with Green's books  
 Auditor's Plat is in Book "D-2" page 94  
 in Register of Deeds office

~~GN R-of-War E side~~





May 12-1960

concrete re-inforced monument set in 1922 by Elmer Horst for NW Cor of Lot 17 of said Auditors Plat of Lot 5 sec 22 142-31. From this NW cor 17 we chain S along a line about 2 ft E of E edge of Tar road. @ 210 set 60° spike for Temp NW Cor of S  $\frac{1}{4}$  of Lot 17. @ 280 set pin and dig looking for SW cor of Lot 17 cannot find it. We continue chaining South. 280 + 184 to SW Cor of Lot 18 we dig down and find a 2' X 36" pipe which is laying flat down so we cannot tell where the True point for this cor is. from point for Temp SW cor of 17 we chain S 5 ft and set 60° spike for Temp SW cor of Bowman 75 ft Tract. I am told that at the SW cor of 17 that the road drage pulled the i.m.



Sec 22-142-31

156 May 12-1950

out that the driver of said drag put the corner back in the hole it came out of right away before the hole was lost only he took a shovel and dug the hole deeper and set the corner down where it would not get knocked out again.

I was told that this corner if dug out might not be right, but awful close I do not look any more as we have dig down  $1\frac{1}{2}$  feet now.

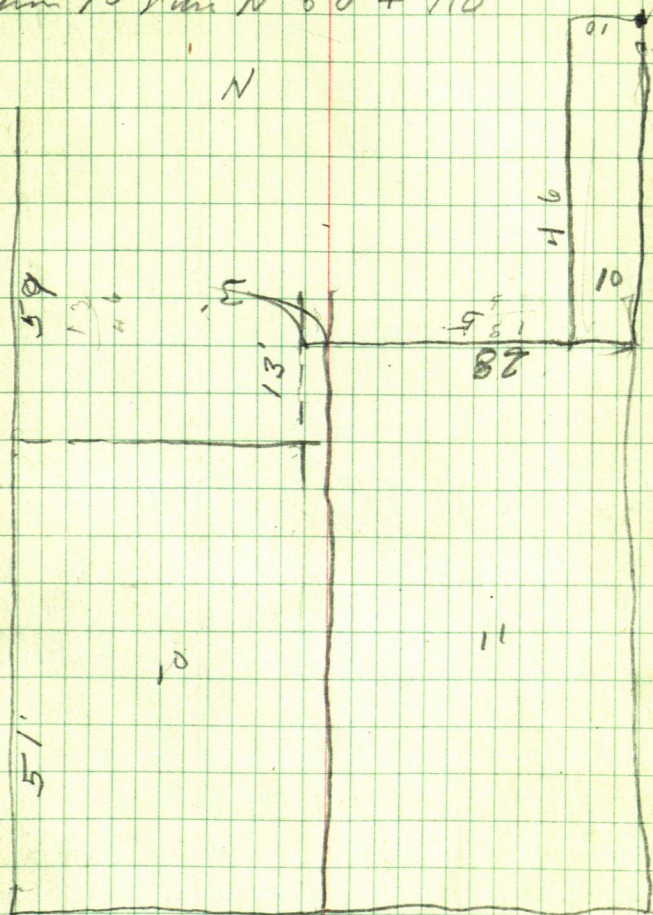
We go to NE cor 17, and chain S 270 set pin then go to Temp SW cor of 17 and chain E 234 feet at intersection of the two distances we dig but do not find any I.M.

from NE corner of 17 we chain S 202.5 and set 60d spike for Temp NE corner of S  $\frac{1}{4}$  of Lot 17.

No charge for said work  
Harold Curo



from NW cor BIK 24 run West  
 70-3 Tower 67' site E on KK Spk  
 Turn 90 run N 80 + 110



from NE cor lot 11 BIK run W 13 ft then S 46 ft  
 at 31 Spk Tower 46 run West 12 N 13 <sup>15</sup>/<sub>31</sub>

149.7  
70.3  
79.8  
300  
599.8

V

209  
70.3  
280  
200.8  
478  
657.1  
47

379.8  
142.9  
70.3  
600

160

330  
70.3  
299.7  
100  
600

57 50

8 7 6 5 4 3 2 1

478 50

1097.4

50

79.8

49.7 50

12 11 10 9 8 7 6 5 4 3 2 1

50

997

70.3

50

86.4 478 50  
Bis JM

Q 478

200

Q

200.3

209

299  
1997  
7.3

15

Bis JM

50

50



75-

125  
547  
179.7

739.87  
146  
599.87

439.6  
140  
299.6

747.85  
148  
699.85

739.87  
1  
747.87

370

81.78  
81.36  
42

439.6  
370  
69.6

Silver Springs  
500 ft along lake shore  
E side Sec. 7-142-31  
bet Tract & lake

8202  
7747

8136  
7142  
1052

294.9  
288.8  
6.1

2891  
2888  
.3