

205

DIETZGEN
PUBLISHERS
NEW YORK

ENGINEERS'
FIELD BOOK
No. 400

N^o 5

Natⁿ

If this book is lost
finder please immediately
notify John W. Curo
Walker Minn and receive
a liberal reward.

John W. Curo
Aug 17-1917

INDEX

Donner's Notes 138-29-139-29. Pg 1 To 24
 Ditch Notes 138-28 25 To 31
 Roads 138-29. Timothy Trwp 32 To 85
 Roads 138-28 " " 86 To 97
 Roads 138-28 " " 98 To 159.
 Time Sheets
 Range Line 138 R28-29 Pg 137

(2)

T 138-139- R 28
T 138-139- A 29

Old Notes of F A Donner.

Copied in part from Field Book
N^o 94. Pg 72 To 121. Cor Co.

Donner's notes read in part as follows.
" Nov 6-1914. Cross lakes me 15 MC.
N^o 10-138-29 and shows me the
old B.T. from which I am to run out

Nov 7-1914

Arvid + Leslie Beals + Donner walk
to N^o 10-138-29 where as notes say
Tam 6 N 55° E 245 L

.. 12 S 84° E 253 Lks = 166.98 FT

We find the old SE B.T. plainly
marked from which I set 4x4x 48" ash post
for the line MC. N^o 10-138-29. As this MC.
comes in lake I set out Cor S 89° 45' E 19.
46.50 FT Run E.

12 + 81.9 Hut @ 18 + 91.7 look for 1/4 bet
1 + 36- 138-29- 139-29 where US notes say

Sugar 7 S 4° W 10

Birch 6 N 53 E 11 gone

Nov 8- Sunday

Signed F A Donner

138-29-28
139-28-29

5

Working for Cass Co. Nov 1914

| | 6 | 7 | 8 | 9 | 10 | 11 | 12 | 13 | 14 | 15 | 16 | 17 |
|-----------------|------|---|---|----|----|----|------|----|----|----|------|-----|
| Frank A Donner | 1 | 1 | 0 | 1 | 1 | 1 | 1 | 0 | 0 | 0 | 1 | 1 |
| E. Expense | 1.12 | 0 | 0 | 25 | 25 | 0 | 1.35 | 0 | 0 | 0 | 1.25 | 0 |
| Arms Beals | 0 | 1 | 0 | 1 | 1 | 1 | 0 | 0 | 0 | 0 | 0 | 0 |
| Leslie Beals | 0 | 1 | 0 | 1 | 1 | 1 | | | | | | |
| JW Curo | 1 | 0 | 0 | 0 | 0 | 0 | | | | | | |
| JL Socks | 0 | 0 | 0 | 1 | 1 | 1 | 1/2 | | | | | |
| Leonid Glorer | | | | | | | | | | | | 1/2 |
| Arms Beals Team | | | | | | | | | | | | |

4.00

Not paid

FA Donner

④

Donner's Notes in Port 138-139
copied from Cassin's field R 28-29
Book

Nov 9-1914 Monday

Continue E

@ 4531.56 E Set hub look for Twp cor To Twp 5

138-139-N R 28-29 W U.S. notes are

Aspen 11 N 52 E 39 = 25.65 FT

Birch 5 S 48 E 21 13.86 " } gone

" 6 S 41 W 15 9.90 "

" 12 N 8 W 30 19.80 "

Continue E

@ 5120 Hub 63.8 Hub 83.00 Hub

94.11.8 Hub From which the line is

where U.S. notes call for

Aspen 12 N 33 E 52. = 34.98 FT

" 10 S 72 E 11 = 7.26 "

" 10 S 13 W 8 = 5.28 "

" 11 N 50 W 10 = 6.6 "

Set 130.60 FT South V 8°

This cor was set out as it did
not check for measurement nor
angle from SE & SW B.T.S. I set
a new sec cor from the SE and SW
B.T.S. by proportion

Donner Transit- Beale Chain

signed F A Donner

Nov 10-1914

I check the West line of sec 31
139-28 running South work done by
Clark a few weeks ago and as I
find the chaining good and line perfectly
straight - I continue this line South

57+89.6 Hub 70+20.1 Hub

79+20 look for $\frac{1}{4}$ cor

US notes call for

YP 105 22 E 45 } gone

YP 12 S 19° W 33

Continue to

84.3 Hub

90+40.6 Hub

@ 103 quit for night

Nov 11-1914

Continue South look for SE cor Sec 1

138-29 US notes say

WP 12 N 61 E 38 = 25.08 Ft

" 22 S 2½ E 38 = 25.08 "

" 15 S 88 W 61 = 44.88 "

WB inch 13 N 11 W 28 = 18.48 "

We find the NE stump badly burned
but we can still see the old 'ST'

Mistaken Curo Aug 26-1917

Nov 11-1917 Continued

on it. We also find an old snag
in the N.W. which looks as if it was
the old B.T. and from the line I a
4 x 4 x 48" aspen post for the line
see on

by flat chain

I intersect the N & S random
line @ 10672.50 ft S 16.50 Ft
East of the line see on

Correcting back

Hub @ 53 goes West 8.19 Ft

" @ 52 " " 8.04 "

I set over corrected hub @ 53 and
using hub 52 for foresight I run
North 1- E & W random

N.G. Curran

Correcting back on E & W

random on N. side of sec 1-139-29

Hub @ 47 goes South 64.86 Ft

" @ 48 " " 66.24 "

I set over corrected hub 47. and
using hub 48 for foresight run N & S intersection
of corrected N & S line where I
set a 4 x 4 x 48" birch post
for the line turn on S.T.

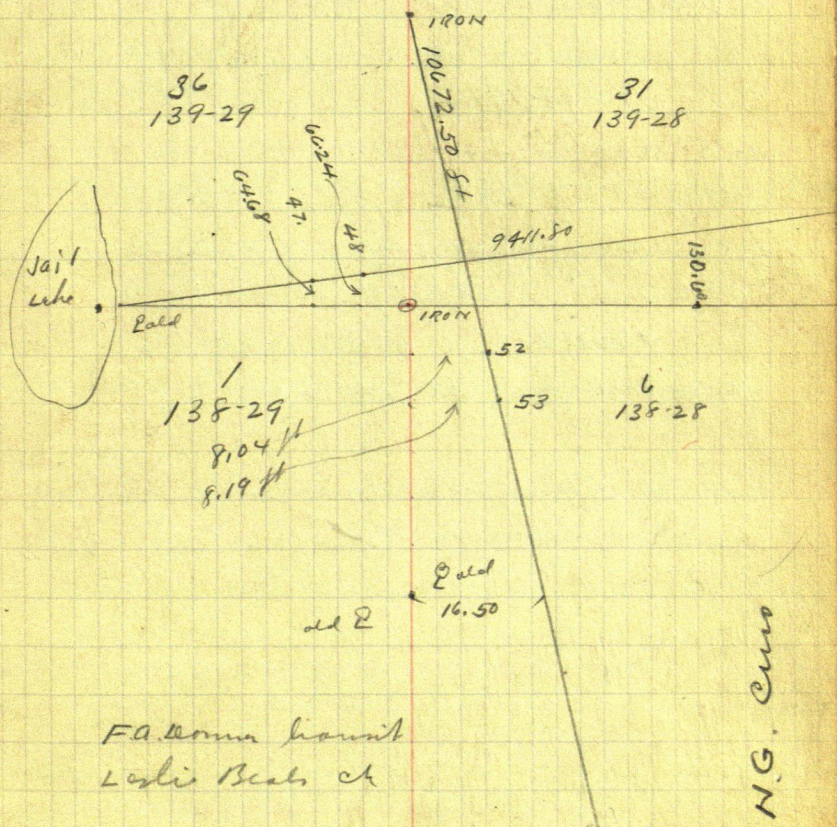
Signed F.D. McConna

7

Nov 11-1914 Contd
of T 138-R 28 & 29
139-R 28-29

Nov 12-1914 go to Pine River

Locating Turp Corner



Depend. F A Homer

8

Donner's Notes 138-139-28 & 29

Nov 13-1914 Carr Co work

Hunting all day

Nov 14-

Nov 15 Sunday

Nov 16 1914 Monday

look up I Mon at Pine River
find only one.

Nov 17-1914 Leonard Glouner

and Donner go to Co of Turp

138-139 R 28 & 29 where Glouner
says he saw the BTS 3 years ago
but being unable to find them I
set this 2 inch cast iron pipe
24" in the ground No caps

Now Fryce and we got crew
ready to work for Terminal Turp

Signed F & Donner

Working For Timothy Twp
Nov 18-1914

Donner - Ben and Amos Fridge go to
Cart iron on set by Curo @ on to
Seen 15-16-21-22-138-29

Run N $89^{\circ}53'E$ U $8^{\circ}15'$
@ 19+49 Hub 28' ent in marsh
27' ent slow 43' L same
43+50 Cross Fridge road
44+76 Hub

Nov 19-1914

Continue East
@ 50' ent hay meadow
5280 look for on 14-15-22-23-138-29
US males call for
NP 14 N $87^{\circ}W$ 635 Lks = 419.09 Ft gas
" 16 S $8^{\circ}W$ 640 " 422.40 "
no big stump in sight
Continue East
at 6500 quit for night

Nov 20-1914 Hunting

Signed F A Donner

Nov 21-1914

Continuing E bet 14 & 23-
138-29

72 Hub @ about 79 look for $\frac{1}{4}$
bet 14 and 23 ¹³⁸⁻²⁹ US nalis say

Maple 7 N 29 E 20 = 13.20 gone

Ask 4 S 26° W 25 = 16.50

nothing but big pine stumps
No maple here

Nov 22-1914 Sunday

Nov 23 " Hunting

Nov 24 " Amos-Ben + Elmer went
to where the $\frac{1}{4}$ ought to be at
about 90 East

PM

Jess Fordyce joins us and we
continue E.

94 + 82 Hub 105 E quit for night

Nov 25-1914 On 13-14-23-24-138-29

US nalis call for

WP 15 N 73 E 212 = 139.92 ft

Asp 14 S 89 E 230 151.96 " } gone

WP --- N 70 W 100 66.00 "

Continuing E.

Working For Timothy Trap 1X 138-29

November 1914

SUN 22 23 24 25 26 27 28 29 30

Williams Team

FA Donner

Expences

Ben Fordyce

Amos Fordyce

Ernest Fordyce

Frank Boltz

Dec

9 10 11

1 1 1

December

SUN 6 7 8 9 10 11 12 13 14 15 16 17 18

FA Donner

Ben Fordyce

Amos

Walter Williams

Leon C. Lower

John W. Curo

OK Donner

1 1

2

Nov 25-1914 Continued

@ 108 E quit for dinner

@ 117. + 32.70 Hub

@ 123 quit for night

Nov 26-1914 Thanksgiving day

Nov 27-1914

Continue E

to 130 quit for dinner

PM continue E to about 136-137

& in meantime I look for 1/4
but see 13 and ~~74~~²⁴ - 138-29 ?

US notes say

WP 4 N 19° W 16 = 10.56 ft

Asp 14 S 7° E 24 = 15.84 "

I find a big WP with the blazes
very plain but the BT has been destroyed
by fire. This I take for the TX W

BT. from which I set a 4x4x48 "
aspen hub from the line 1/4 cor
bet 13 and 24 - 138-29 with new

BTS viz

Aspen 6 N 59° 55' E 54.85 ft

" 5 S 30° 34' E 63.30 "

with
ticks

I set Hub @ 131. + 59.70 E from which the
FA comes

Line 44 Corsets South 532.30 Ft + 08'15"

Nov 28-1914

I start to correct back but as the B.T. is not very plain I decide to call up Curo.

Curo comes to Pine River on freight and tells me to continue East to Town Line - and then run N and S.

Nov 29-1914 Sunday

Nov 30-1914 Rain all day

Dec 1-1914

Continue East

from 132. @ 136 enter swamp and from here on the land is all marshy

at 150 quit for dinner

at 158 look for an to sec

13-24-18-19-138-29-138-28

US miles call for

WP 20 N 52° E 20 = 13.20

Fit 11 S 32° E 7 = 4.62

WP 14 S 78° W 36 = 23.76

Mop 68 N 32½° W 31 = 20.46

gone

Dec 2-1914

Newark to NE on Dec 12-138-29

where US notes say

WP 12 N 61 E 38 = 25.08 FT

" 22 S 2030 E 38 = 25.08 "

" 15 S 88 W 68 = 44.88 "

WBirch 13 N 11 W 28 = 18.48 "

As this cor was just set by me
I set out same and run S 08°

@ 5 + 12.7 Hub 13 + 43.4 Hub

at 26 look for 14

US notes:

WBirch 4 N 87° E 20 = 13.20 FT

YP 8 N 25 W 16 = 10.56 " gone

Continue South

@ 26 + 50 enter swp 28 + 30 LV

30. enter meadow! 31 + 50 LV

36 + 15 Hub 42. quit for night

Dec 3-1914 Continue S.

@ 47 + 50 enter slow 51 + 50 LV

52 Hub

Look for SE on

Dec 12-138-29

Sp 8 N 66 E 12 = 7.92

asp 12 S 89 E 12 = 7.92

Tam 12 S 64 W 8 = 5.25

asp 15 N 11 W 16 = 10.50 } gone

138-29

Sec
122°20' to first
corner curveSec
15Sec
14Sec
13Sec
22Sec
23Sec
24

26222.80 Ft

20718.44 Ft

10545.5
Ft

210.8 Ft

Sec
25

Down Transit

Amos Fordyce Ch

Sec 36

2844.9 Ft

1172.60 Ft

Dec 3-1914 Cont'd

Continues South

@ 66 ent sup. 68+50 LV

Dec 4-1914

Continues South

@ 78+50 Hub

Look for $\frac{1}{4}$ E side 13-138-29

Asp 10 N 56 E 20 = 13.20 FT

W. Birch 7 N 70 W 17 = 11.22 " gone

Continues South

@ 79 ent sup 83 LV

93+50 S Hub

Dec 5-1914

Continues S to 105 S. then continues
over E and W random to an
intersection of N & S random

@ 102+92.7 S we intersect
the E & W random @ 164+76.4 E

Look for NE Cr 24-138-29

NP 26 N 52 E 20 = 13.20 FT

" 14 S 78 N 36 = 23.76 "

Fir 11 S 32 E 7 = 4.62 "

Mph 5 N 32 $\frac{1}{2}$ W 31 = 20.46 "

Signed F. A. Downer

Dec 6-1914 Sunday

Dec 7-1914

Continued South

@ 114 ent alder nwp 120 Ld

123+37.85 Hub 126+50 ent nwp

127+25 ent cranberry bog

Dec 8-1914

Continued South @

@ 138+50 Ld same 145+90.3 Hub

158+60.5 Hub look for SEEN

24-138-29

Wash 10 N 45 E 18 = 11.88 Ft

W Birch 12 N 39 W 26 = 17.16 "

Bk Ash 6 S 49 E 27 = 17.82 " zone

Fir 6 S 48 W 31 = 20.46 "

Continued S.

@ 166 ent nwp 167 Ld

172+45.3 Hub look for 1/2 m

E side of sec 25-138-29 but

find MS notes do not give them

No BTS Continued S.

@ 184+1.5 Hub 194+88.3 Hub

Signed

FA Donner

18

138-28-29
139-28-29

Dec 9-1914

Continue S

@ 211020 look for SECn 25-
138-29 where US notes call for

W Brich 5 N 81 E 28 = 18.48

" P 16 N 87 W 33 = 21.78 *gone*

Asp 12 S 30 E 30 = 19.80

WP 24 S 61 W 42 = 27.90

Continue S.

@ 213 + 41.85 Hub 222 + 91 Hub

231 + 99.50 Hub 238 + 45.40 "

20.2 + 22.80 "

Dec 10-1914

look for SECn Sec 36-138-29
where US notes

Lind 7 N 8 E 16 = 10.56 Ft

W Brich 7 S 50 E 13 = 8.56 "

" " 8 S 43 W 20 = 13.20 "

Lind 4 N 57 W 22 = 14.52 "

Wm Knig shows me a pointed
rock with cross cut on top which
he says is the true sec cn and
I set over this rock and check
on the old NE B.T. which is

Dec. 10 - cont

Donners Notes
copy

19

plainly marked but it does not
check with the US notes which I
have

Using this rock on the line S E
Cn of Sec 36-138-29

at $262 + 22.80$ the line S E Cn
Sec 36-138-29 sets West

1172.60 Feet $\vee 80^\circ$

Correcting back

at $209 + 78.24$ goes W 838.08 Ft

Krieg says he saw a birch
tree at this place 2 years ago
with the iron marks very plain

We look for Birch BT, and
others but find they are all blown
down and badly burned

We find a Birch blown
down which Krieg says must
be the old BT.

Signed

F A Leamon

Dec 11 1914

@ NE Cr Sec 36-138-29

US molar calf

N Buck 5 N 81 E 28 = 18.48

" P 16 N 37 W 33 = 21.78

" " 2x S 61 W 42 = 27.90

Asp 12 S 30 E 30 = 19.80

Mr Rufus Heath shows
me the SW WP stumps plainly
marked from which I set

1x1x12" gas pipe full length
in the ground for the line

NE Cr Sec 36-138-29

New BTS Uij ^{55° 50' W} 07° 30'Crown on Rock N 52° 35' W 7.20 FT ^{6.90}

" " " N 83° 8' E 38.38
83° 10' E 38.40 "

At 20718.44 S the line NE
Cr of sec 36 sets West
844.90 FT

Correcting Book

@ 15538.83 goes West 633.66 FT

where I set an iron pin 8" long
full length in the ground for
line NE Cr 25-138-29

New BTS Uij

Donners Notes
copy

21

Dec 11-1914

common rock H 28°25'W 103.50 FT
" " " N 42°45'E 62.00 "

At 103.59.22 on West

10 359.22

2x2x18

- ① 8280
- ② 10560
- ③ 15740
- ④ 21120
- ⑤ 26400
- ⑥ 31680

U 7°30'

211.22

lin 8"

13.60)

7°30'

nnn

Donners Notes
copy

21

Dec 11-1914

cross on rock N $28^{\circ}25'W$ 103.50 Ft $07^{\circ}30'$
" " " N $42^{\circ}45'E$ 62.00 "

At 10359.22 goes West
422.44 Ft where I set a $2 \times 2 \times 18$
oxygen bulb for line NE on sec
24-138-29 New BTS viz $07^{\circ}30'$
Aspin 3 N $4^{\circ}20'W$ 10.60 Ft
" 5 S $87^{\circ}7'E$ 21.15 "
Cross on Rock S $19^{\circ}48'W$ 30.20 "

At 5179.61 goes West 211.22
ft where I set an iron pin 8"
long full length in ground
New BTS
Asp 4 N $20^{\circ}31'W$ 13.10 Ft (or 13.60)
" 5 N $55^{\circ}30'E$ 57.00 "
" 3 S $50^{\circ}20'E$ 38.20 "
Bink 3 S $50^{\circ}20'W$ 10.70 " $07^{\circ}30'$

Signed F A Donner

Dec 12-1914

Reg @ 10-11-14-15-138-29

set by Euro-rum S. J. 8°15'

@ 1+88.8 Hub 24+38.3 Hub

40+82.50 Hub 49 end marsh

51 L

Dec 13-1914 Sunday

Dec 14-1914

Continue S.

@ 51 Euler cranberry bog 53+23.85 S

At 53+23.85 S. we intersect
the E+W random line at
54+21 East.

At 56 Euler open meadow

79 look for 1/4 cor bet 22 & 23

138 29 where US notes call for

Hyp 10589W 50 =

WP 36N 87E 29 =

grows

Continue S

94+42.90 Hub. 104+87.30 Hub

Dec 15-1914

look for Cor to 22-23-26-27-138-29

US notes say

Oak 12 N 31 E 14 = 9.24 FT

" 12 N 59 W 15 = 9.90 "

" 15 S 41 W 35 = 23.10 "

Spr 18 S 33 E 25 = 14.50 "

We find a 2x2" stake set by
Curo for the line cor

From this stake I find 3 old
oak stumps which check with
course and distance

Ht 105 + 95.5 the line sec
Cor of sec 22-23-26-27-138-29
sets West 210.80 Feet

Dec 16-1914 Waiting for Curo

Dec 17 " Curo comes - we look over
notes then go out and set sec
Cor of 14-15-22-23-138-29
by measurement.

Signed F A Donner

24

138-28-29
139-28-29Donners Notes
copy

Dec 18-1914

Start @ Cn 14-15-22-23-138-29
and Correct Book

@ 5351.80 E the Cn sets N 25.10 Ft.

Hub @ 4013.90 goes N 18.83 where I
set a 10 Ft aspen pole full length
in marsh for the line $\frac{1}{16}$ Cn EHub @ 2675.90 goes N 12.55
Ft where I set a 60 d spike for the line
 $\frac{1}{4}$ Cn bet 15 + 22 138-29 with
New BTS viz $U 8^{\circ}$ J P 10 N 42.35' E 263.30 Ft $N 42.50' E$
 262.0 Hub @ 1337.95 goes North
6.27 Ft where I set a 60 d spike
for the line $\frac{1}{16}$ Cn

PM make out line

Dec 19-1914

Dec 20-1914 Sunday at Pine River

Signed F A Donner

1/4-15-22-138-29. Nonumented May 23-1923 Curo

Note: I copied
Field Book No 94
and returned same
Aug 17- and Aug 18
sent in No 83
No 56 To go on
Aug 20-1917
Curo

① 138-28 25
Timothy Twp
Crow Wing Co Minn

Aug 26-1917 Sunday
Ditch

Offlike Ditch for Timothy Twp
Sec 26-138-28

Go home with Alma - Gerald
& Reed at 7-30 AM and go to Geo
Hardys place in Sec 27-138-28 via
Pine River My own Ford car

At Hardys place @ 8-30
wait half an hour for him to finish
milking then with my car drives
about two mile East to a point
on E & W graded road about $\frac{1}{4}$
mile West (N) of the East 1/4
Cn to a point known on the Thompson
Creek about 40 rods West of
Peter J. Peterson's house

Note: this road is supposed
to run E & W on the cen line of Sec
26 as surveyed by Lew Garrison
former Co Surveyor of Crow Wing Co
but it runs on about $14^{\circ}30'$ S of E
and I have my doubt about its
being on the true E & W line
John W. Cunn

Aug 26-1917 cont'd.

We find a well graded road here and a Corrugated Culvert 36" x 20' which lies NE & SW ly in the grade.

There is a new row of stakes just set by the Town Board.

These stakes lead almost South 600 feet occurs a mark-and cut off the bends of a small creek bed. The stake line leads to an intersection of the road cen 8 ft west of the cen of the culvert.

Set stake 0.0. ft west of the south end of culvert and run S 2° 23' E
 18° S 3° 57' W

③

100. stake in meadow
 200 " "
 300 " "
 400 " "
 500 " "

+ 10
 AP -

600

LV meadow - under clay
 stake = A.P.
 Thence

S 21° 40' W

+ 50 = 650. stake in creek bottom

AP + 77 = 677 Hgt AP. on E side of creek

Thence
 S 8° 35' W

S 8°03' W

700 Hub Edge of creek

+10 = 710 station in cu of dry creek bed

800 Hub " creek bed cu

HP +94 = 894 Hub Angle Point Creek cu

S 32°06' W

900 station creek cu

1000 " " " "

HP +55 = 1055 Hub Angle Point Creek cu

^{Thence}
S 4°50' W

1100 station creek bed cu

HP +68 = 1168 Hub creek cu Angle Point

S 47°30' W

1200 station creek cu

1300 Hub on bank E of creek

+79 = 1379 post post in creek cu 1385 and 1400 ^{E.P.W.}

probably end of ditch

creek here runs left about 20°?

Adjusting Transit Level

150' Peg in rd EL 100.0 assumed +5 4.40

HI 104.40 +5 on peg 150' W = 3.92 EL 103

adjust transit and find it 0.03 off = 300 ft

John W. Curo

28

(4)

Aug 26-1917

| BM Sta | +S | HI | -S | Elev | End Area |
|--------|------|--------|------|--------|----------|
| 1. | | | | 100.00 | |
| | 5.05 | 105.05 | | | |
| | | | 5.11 | 99.94 | |
| | | | 8.07 | 96.98 | |
| T.P. | 3.22 | 103.16 | | 99.94 | |
| 0.0 | | | 8.07 | 96.94 | |
| 1 | | | 5.70 | 97.5 | |
| 2 | | | 4.40 | 98.8 | |
| +6 | | | 5.70 | 97.5 | |
| 3 | | | 4.90 | 98.3 | |
| 4 | | | 5.10 | 98.1 | |
| 5 | | | 6.10 | 97.1 | |
| 6 | | | 4.70 | 98.5 | |
| TP | 4.30 | 102.76 | 4.70 | 98.46 | |
| +50 | | | 5.2 | 97.6 | |
| +77 | | | 4.0 | 98.8 | |
| 7 | | | 4.0 | 98.8 | |
| +10 | | | 5.0 | 97.8 | |
| 8 | | | 5.0 | 97.8 | |
| TP | 4.52 | 102.45 | 4.93 | 97.93 | |
| +94 | | | 4.75 | 97.7 | |
| 9 | | | 4.9 | 97.6 | |
| 10 | | | 5.3 | 97.2 | |
| +55 | | | 5.6 | 96.9 | |

Remarks

Assumed = Nail in lil pole NE of sta 0.0.

On top of S. end of Culvert

Bottom of S. end of Culvert

On top of Culvert. So end E of sta 0.0.

— Ff W. of So end of Culvert
in dry creek bottom

On Sod

Creek bottom

Peg @ Sta 6.

in creek bottom

in creek bottom - dry

on Hub @ Sta 8

on top of hut at ground level

on ground

on ground

John W. Curo

Aug 26-1917

| B.M. Sta | + S | H I | - S | Elev | End Area |
|----------|------|--------|------|-------|-------------|
| | | 102.45 | | | |
| TP | 4.70 | 101.94 | 5.21 | 97.24 | |
| 11 | | | 5.10 | 96.9 | |
| +68 | | | 4.84 | 97.10 | |
| 12 | | | 4.70 | 97.2 | |
| 13 | | | 3.9 | 98.0 | |
| +79. | | | 5.5 | 96.4 | |
| TP | | | 5.33 | 96.61 | |

From Sta 13+69 we run a rough line of levels down an old road about $\frac{1}{4}$ mile SW to an intersection of the creek and find about 12 feet of a drop.

138-28

⑦

Timothy Twp 31
Crow Wing Co. Minn

Aug 26-1917

On top of hut at Sta 10+55

On top of Hub @ ground level
creek bottom

On Bank

on ground - creek bottom

On Hub @ Sta 13+79

We get practically no drop at all in
1369 feet

Take dinner with Geo Hardy also
supper and go home to the farm over night
See Book No

John W. Cunn

Sept 3rd Monday 1917

Town Board meet at Char
Mitchel's place on

See 138-28 See Book No

I pay Iverson \$9. about, in full.

Sept 4th Alma - Gerald - Reed & I
go to Park Rapids Ar 12³⁵ PM.

Commissioners meet at Park Rapids
dinner & over night with Fannie
and Tom

I pay Mrs Fred Rine
\$6. rent for office for Sept 1917

Glad telephones that
Ilo arrived from Decorah last
Saturday and is at Hockemusock

Sept 5th 1917. Wed

Glad telephones that Ilo
is at Hockemusock and we
go from Park Rapids to Walker
Ar Walker about 4-30 PM.

in Ford and go to Hock for supper
get Ilo and go to the farm at
Pine River where we all stay over
night

John W. Quinn

② 138-28-29
Timothy Twp

33

Sept 6-1917 Thurs

I take Alma - Elmo - Gerald &
Reed to Pine River. but grab them back
to the farm where they are to stay till
I work a few day for Timothy Twp.

Give Alma \$5. to get her dress
Send \$10.62 P.O. money order to
Walter Olson at Walker to pay my
Someritan Lodge dues then
start for Ben Fordyce - - car works
bad and I turn back to car
at Inners garage and get Char
Mitchel to take me out

Ben Fordyce has been working
on the railway line alone all day
took his lunch - I arrived 2¹⁰ PM
find them all gone - I figure connections
and fall asleep in shanty and find Mr
Fordyce back when I wake up
figure connections out of PM.

Get lunch at 4 PM and supper at 6.
Over night with Fordyce.

Figure connections 3 Hrs in PM

" " 4 " " PM

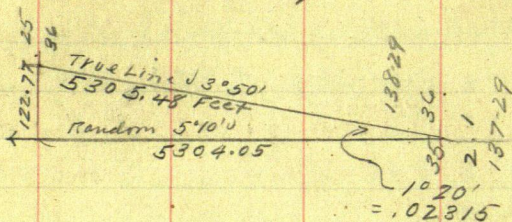
John W. Cross

Timothy Turp
Crow Wing Co Minn

Sept 7-1917 Fri

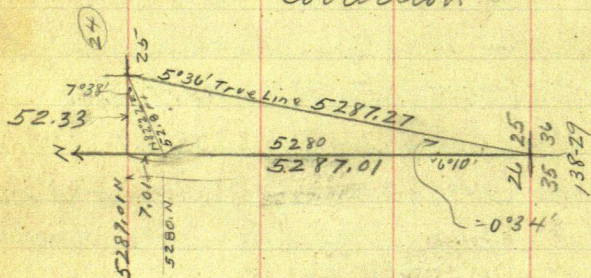
-Correction-

Beat From Page 160. Book N^o 3



$$\begin{aligned} 10^{\circ}20' \\ \sin &= .02327 \\ \cos &= .99973 \end{aligned}$$

Correction



$$\begin{aligned} 82^{\circ}22' \\ \sin & .13283 \times 52.80 = 7.01 \text{ N} \\ \cos & .99114 \times 52.80 = 52.33 \text{ E} \end{aligned}$$

$$.00989784 = 0^{\circ}34'$$

$$5287.01 \text{ into } 52.33000$$

$$\begin{array}{r} 47.57309 \\ 4756910 \\ 4229608 \\ \hline 5273020 \\ 4757309 \\ \hline 515711 \end{array}$$

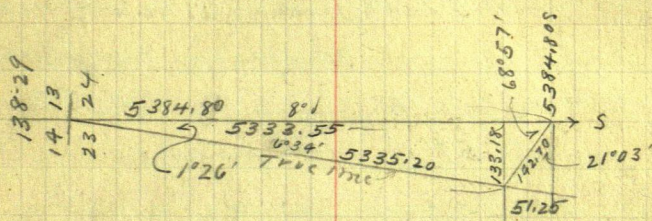
$$0^{\circ}34' \\ \cos &= .99995 \text{ into } 5287.01 =$$

④

138-29
Timothy Turk

35

Sept 7-1917 could Fri

 $21^{\circ}03'$

$$\text{Sine} = .35918 \times 142.7 = 51.25 \text{ N}$$

$$\text{Cosine} = .93327 \times 142.7 = 133.18 \text{ W}$$

$$5333.55 \text{ into } 133.18 = .024970 = 1^{\circ}26'$$

 $1^{\circ}26'$

$$\text{Sine} = .02501$$

$$\text{Cosine} = .99969 \text{ into } 5333.55 = 5335.20$$

Bern Fordyce and I left @ 7-10 AM and walk and carry survey outfit to cor of 13-14-23-24-138-29 and will correct the mile south

Fordyce attempted to cut out this mile yesterday, along the line line but came out on the North end about 2 rods West of the line cor to 13-14-23-24

We figure the correction an inch or less start on this or I shot the dist bet Hat 5384.80 S was 142.20 instead of 142.70

Trinity Twp

Sept 7-1917 Friday

We correct as follows via angle
 $N 68^{\circ} 57' W$ using $[.02641]$ when
 we should have use (via the same angle) $[.026500]$

We run $N 68^{\circ} 57' W$ at the following hubs

300 - 7.92

600 - 15.85

750 - 19.81

900 - 23.77

1200 - 31.69

At 1346.20 run $N 68^{\circ} 57' W$ 35.55 and
 set Hub for $N 1/16$ cor bet 23 and 24 - 138-29

1500 - 39.62

1691 - 44.66

2100 - 55.46

At 2692.40 we run $N 68^{\circ} 57' W$ 71.10 FT
 where I set a hub & look for line $1/4$ cor bet
 Sec 23-24-138-29 with New BTS on

Poplar $8^{\circ} N 79^{\circ} 05' W$ 65.85 FT

Spruce $6 S 31^{\circ} 20' E$ 103.95 "

lined from the line line @ $6^{\circ} 34'$

and from here I take the line
 in N + S setting hub and hill staker about
 every 300 ft until true sec line road cor

At 4038.60 S with here previously

Bet Secs 23 and 24

Sept 7-1917 contd

⑥ 138-29

37

run N 68° 57' W 106.65 feet and set a hub. for line
S 1/16 bet sec 23-24 -138-29

This should have gone $\frac{25}{100}$ of a foot
further but let it go

We then "take in" the line South to
the cor of sec 23-24-25-26 -138-29

I had to "fudge" a couple of inches to
make it fit

- Correcting -

We then walk ~~the~~ South of cor of
23-24-25-26 -138-29 and correct our line

East

Correction @ 90° to random

in $[.00989] = 0^{\circ} 34'$ (at 90°)

300 N goes East 2.97 Ft

600 N " " 5.90 " "

900 N " " 8.90 " "

1200 N " " 11.90 " "

1320 N " N 82° 22' E 13.20 Ft

1500 N " East 14.80

1800 " " " 17.80

2100 " " " 20.80

2400 " " " 23.80

2640 " goes N 82° 22' E 26.40 Ft to 1/4 bet 25-26

138-29 New BTS Vig. see page 43

2700 N goes East 26.70

138-29
Crow Wing Co
Timothy Twp

Sept 7-1917 Contd

| | | | |
|------|-------------|-------|-----------------|
| 3000 | N goes East | 29.70 | Feet |
| 3300 | " We cham E | 32.70 | set hub & stake |
| 3600 | " " " | 35.60 | " " " |
| 3749 | " " " | 37.10 | " " " |

At 3960 We run $N 82^{\circ} 22' E$

3960 N 39.60 Feet and set hub and tall stake
mkd "N 116 bet 25+26-138-29" No B.Ts.

| | | | |
|------|------------|-------|---------------------|
| 4200 | N. W. Ch E | 41.60 | and set hub & stake |
| 4500 | " " " | 44.60 | " " " |
| 4800 | " " " | 47.50 | " " " |
| 5100 | " " " | 50.50 | " " " |

5287¹⁰ N Cor 10 Secs 23-24-25-26-

138-29 sets East 52.33 feet

Fordyce + I correct 20 bet secs 25 and
26-138-29 as far as Hub 3300 N. then quit
for night - rained in A.M. We walk home
in 55 minutes on 7-20 P.M. getting in

11 Hours & 10 minutes

Supper + over night with Fordyce
Hama - Ilo - Gerald + Reed are on the
farm at Pine River

John W. Curo

Time Sheet Working For Timothy Twp Sept 1917

| | 5 | 6 | 7 | 8 | 9 | 10 | 11 | 12 | 13 | 14 | 15 | SUN | 17 | 18 | 19 | 20 | 21 | |
|----------------------------|-----------------|-----------------|------|---|---|----|-------------|-------------|-------------|-------------|-------------|-------------|-------------|--------------|--------------|-------------|----------------|-------------------|
| John McCord Timothy Twp | 7 H 10 N | 11 H 10 N | 3 H | 0 | 0 | 0 | 9 H 28 M | 9 H 28 M | 8 H 55 M | 9 H 40 M | 9 H 50 M | 1 H | 0 | 9 H 35 M | 12 H 20 M | 4 H | 8 H | = 72 hrs 7 H 3 M |
| Auto | 0 | 0 | 0 | 0 | 0 | 0 | 8 H 15 M | 8 H 15 M | 8 H 15 M | 8 H 15 M | 0 | 0 | 8 H 15 M | 8 H 15 M | 0 | 4 H 15 M | | |
| Ben Fordyce & Co | 12 H 10 N | 12 H 10 N | 10 N | 0 | 0 | 0 | 9 H 28 M | 9 H 28 M | 8 H 55 M | 9 H 40 M | 9 H 50 M | 1 H 30 M | 0 | 9 H 35 M | 10 H 20 M | 4 H | 8 H | = 14 hrs 0 H 33 M |
| Chas Mitchell | 0 | 0 | 0 | 0 | 0 | 0 | 0 | 0 | 0 | 0 | 0 | 0 | 0 | 0 | 0 | 0 | 0 | |
| Auto | 2 ⁰⁰ | 2 ⁰⁰ | 0 | 0 | 0 | 0 | 0 | 0 | 0 | 0 | 0 | 0 | 0 | 0 | 0 | 0 | 0 | |
| Nick A Boltz | 0 | 0 | 0 | 0 | 0 | 0 | 9 H 55 M | 9 H 55 M | 0 | 9 H 40 M | 9 H 50 M | 9 H 50 M | 0 | 9 H 35 M | 10 H 20 M | 0 | 0 | 7 hrs 3 H 50 M |
| Leroy Hardy | 0 | 0 | 0 | 0 | 0 | 0 | 0 | 0 | 0 | 9 H 40 M | 9 H 40 M | 0 | 9 H 35 M | 10 H 20 M | 4 H | 8 H | 7 hrs 5 H 55 M | |

Paid

Sept 8-1917

Saturday. Dark and Cloudy

I do not wake up till 8 A.M. as I have always been called for breakfast

Mr. Fordyce quietly ate his breakfast without waking me - and when I appear he informs me that he will not work with me today as he has to go to town "anyway"

I tell him we can finish correcting our South half mile before noon and can be ready to start in 5 minutes which will make it 8¹⁵ AM but he will not listen and goes on with post setting

It does not rain and he comes in passing at 9¹⁵ AM and says it is now too late to get back by noon

Of course it is now too late but would not have been had he left when I wanted to go

As I slept with Fordyce and he got up lots of times during the night I did not notice when he stirred up and he should have called me

I figure corrections 9⁰⁰ to 12 - 3 - Hours in P.M.

Board Sheet Timothy Trip Sept 1917

| | | | | | | | | | | | | | | | |
|---|---|---|-----|----|----|----|----|----|----|-----|----|----|----|----|----|
| 6 | 7 | 8 | 9 | 10 | 11 | 12 | 13 | 14 | 15 | 16 | 17 | 18 | 19 | 20 | 21 |
| | | | SUN | | | | | | | SUN | | | | | |

Mrs Ida Fordyce

[illegible]

Curo Boarding himself

[illegible]

To my wife and baby also some meals with Fordyce and
as I and my wife have eaten some meals with Hardy and
as Fordyce - Roy Hardy & I will eat supper with Geo.
I will make $2\frac{3}{4}$ days of my own bread but over to Fordyce
and 3 days over to Hardy. Its kind of agreeable.

Sept 8-1917 Cont'd

I work on notes all forenoon - and
take dinner with Fordyce - Still Cloudy
P.M.

I go to Pine River with Fordyce and
his team get my car which has a bill
of \$ against it and stay over
night on the farm with Alma - Elsie
Harold + Reed

Sept 9th 1917 Sunday

We all go to Hackensack in Ford
and eat our lunch with Walter

Then go to Walter and mail up
the house and back to the farm for
night Wesley + Leighton were at
Walter also

Jahn W. Curo

Timothy Twp
Crow Wing Co.

Sept 10-1917. Monday

Go from Farm to Ben Fordyce place
Via Pine River in Car.

L. Pine River @ 8 AM. At Fordyce
8 ²⁰ AM. and we go in car to Rumburg's
place and walk down survey line
and finish correcting random bet
Acres 25 and 26 138-29.

Fordyce & Car - Correcting

At Hub 3000 N chain E 29° set hub & stake
At 2640 run N 82° 22' E 26.40 feet
set hub for line 1/4 Cor bet 25-26
138-29 New BTS. Upr 5:35'

Paplar 9553° 48' E 29.62

Stake in meadow N 53° 48' W 38.70 15:35'

At 2400 Ch E 23.80 set hub & stake
At 2100 Ch E 20.80 set Hub & stake

1800 " " 17.80 " " "

1500 " " 14.80 " " "

1320 run N 82° 22' E 13.20 ft and
set hub for 3/4 Cor bet 25-26-138-29

1200 N run E 11.90 set Hub & stake

900 " " E 8.90 " " "

600 " " " 5.90 " " "

300 " " " 3.00 " " "

We finish in AM and get home for
John W. Curo

Sept 10-1917 could

dinner @ 12-30 In P.M. we go in
car to Mrs Glover-Shepards and look for
1/4 cor bet Sec 11-14-138-29 where
U.S. natls call for "I to X @ R"

NP 10 S 66° E 50 LXS = 33.00 Feet

NP 12 N 40° E 52. " = 34.32 "

I find the remains of bath old
B.T. stumps which were marked several
years ago when I once set the
West 1/4 cor bet 11 and 14 for Hank
Glover At that time I remember
the stumps did not check out
and I cannot remember how I
set the 1/4 post but to-day I find
two old huts bath close together
the North one being backed with 2,
backs an inch apart in the top
From this old hut stumps
of old B.T. stumps stand

O.K. for course but the N E line
stood 8 feet or far away

SE cor of Glovers old fence is
North 33.00 feet

I set two stakes here the South
stake at the old West which I
Jahn W. Curo

(14) 138-29
Timothy Twp (45)

Sept 10-1917 could
will probably use for the true 1/4 Cor
and the other stake the required dist
from the NE stump but this last
stake don't count

I then go half a mil. West to the
Cor to run 10-11-14-15-138-29
where US nalis call for

NP 25 N 68° E 17 LKS = 11.22 Feet

NP 20 N 84° W 90 " = 59.40 "

NP 20 S 84° W 104 " = 68.64 "

NP 22 S 38° E 63 " = 41.58 "

I once set this corner when
all four trees stood plainly marked
and all checked for course and
measure except the SE tree which
stood 2.30 feet too far away
and which at that time I was
compelled to ignore or to dist

I find my old cor. post point
which checks out perfect to
the face of the old SE & NE
stumps which are still here but
the NW and SW trees have been
grubbed out for road purposes
I drive a new hub for the true
John W Curro

10-11-14-15-138-29 Monumented May 25-1923 Curro

(46)

(15)

138-29
Timothy Twp

Sept 10-1917 could

on to 10-11-14-15-138-29 with new
BTS. viz @ $7^{\circ}20'$ turned from

line line looking East

S P 10 N $22^{\circ}10'W$ 47.85 Feet" 9 S $56^{\circ}45'E$ 46.50 "" 9 S $26^{\circ}50'W$ 49.25 "Old BT Slump N $68^{\circ}E$ 11.22 "" " " S $38^{\circ}E$ 41.58 + 2.32 =43.90 Feet: to face of all the slumps
@ $7^{\circ}20'N$ Focus E. on line $1/4$ and run E
At 2640 E. the slump old hat at
what is probably the $1/4$ cor sets
East 42.00 feetComing $1/4$ mile West our hat set
in line with old fence post is O.K.
for West $1/4$ except that it is half
an inch too far East

So @ 21341.05 E hat on line

@ 2682.00 E. interest old $1/4$

Over night with Fordyce get home

@ 548 Get in $9\frac{1}{2}$ HourMrs Walter M. Sears of 617-9th
St N^o 13rd Minn begins school
teacher Bonds with Fordyce
John W. Curo

138-29

97

(16)

Tromatopy Turb

Sept 11-1917 Tuesday Crow Wing Co

Lo Fordyce farm @ 7²⁵ am with Ford
 car Ben Fordyce - Nick A Boltz (Boats)

"L.C." Barnes - Sears and Lela Fordyce

Lo LC + Lela at school House then drive to
 old Hut @ 1/4 mi bet 11+14-138-29

over which I set transit - back-sight
 half a mile West on line on to

10-11-14-15-138-29 -- transit telescope
 and run E. on 7'20" Jan E.

Ben Fordyce Fly & Ch - Curo transit
 & Ch Boltz a - following an old road
 @ 300 Hut @ 335 E. a short branch hay
 road runs SE 1/4 mile @ 600-900 Hut
 1200-1320 Hut old road is 100 ft N.
 @ 1500 Hut @ 17500 old road crosses
 our line and runs S 80° E

@ 1800 - 2100 - 2400 Hut, Boltz eats
 his dinner out and Fordyce & I go
 home in car for dinner

P.M.

Come back in car and continue East
 @ 2700 E. set Hut and look for cor
 to see 11-12-13-14-138-29

where US notes call for

N.P. 18° N 69° E 27 L_{RS} = 17.82 Feet

Jahm W. Curo

Sept 11-1917 Contd

NP 15N 84° W 56 LKS = 36.96 Feet

NP 14° S 55° 30' W 64 LKS = 42.24 "

Sugar 9S 53° E 37 " = 24.42 "

We do not seem to find them but our half mile chain comes out almost at foot of big hill on SW side and a few steps from a big forked WP tree 4 ft thru which has fallen NW

"Roy" Hardy comes over and stays an hour and tells us that Dan Morey claims the ca was here near the big "School-in-a-m" and that there is a small pile of rocks around same. He also says James Cislak saw this ca. We will see them later.

Quiet for night about 6-10 and get home for supper @ 6:20 PM.

After supper I go to Pine River where I find Alma and all the kids waiting for me. I take them home then go back to Fordyce and get to bed about 11 PM. Mrs Fordyce - Teacher etc are over to Botz to a party. We get in 9th 55 mins.

John W. C.

18

138-29

49

Timothy Twp
Crow Wing Co MinnSept 12th 1917 Wed

I and Ben Fordyce with my Ford car
L. @ 8 am take teacher on our way to her
school - then drive to Leon Glovers
and make inquiry about cor to 11-12-13-14
138-29 and as they know nothing we
drive to Jas Cislus place where he tells
us that Dan Morey once showed him
the cor "on the side hill near a big school-
man" and that two rods or so up the
hill and NE of "School Man" there is a
small pile of rock to mark the corner.

We continue our drive in the rain
to Dan Moreys place on NE $\frac{1}{4}$ of NE $\frac{1}{4}$ of
Sec 20-139-28 where Mr Morey says
the cor is near the big school-man
on SW side of same and near foot of
big hill on SW slope and that there is
no "pile of rock" etc. He says he once
found a small 15" pine stump 1 foot
hi with scribe marks being "BT"
near base but the stump may now be
burned. The "school-man" is a big forked
wp live. We make a 20 mile drive in a.m.
and get back about 11-30 I work on my
field notes till 12⁴⁵ when Ernest
John Weers

50

(19)

138-29

Sept 12-1917 Contd

Fordyce announces "Slimmer" Mrs F. is
away. Cloudy and rain all forenoon
P.M.

Ben Fordyce and I in Ford go to cor
of 11-12-13-14-138-29 L₁ @ 2.45

At 2640 E set hub @ 2661.36

E. set hub for temp cor for the
following reason:

This mile is given @ 8096 L₁s
being 5343.36 Feet and as the
distance East of the first half mile
is 2682. feet the East half would
require 2661.36 feet to make
out the required 5343.36 Feet

We then try our best to
make something in the line of
Stumps check out and I
have half a notion to "fudge
in" this corner but I guess
I will have to give it up and
run it in from miles of Cham-
agne N-S and East

The only thing which we
might be able to make our
selfs believe might be the
old tier From our square hut
John W. Curo

Sept 12-1917

(20) 138-29

57

at 26.61.36 E the "School-man"
being a WP 48 bears N 49° E 16.10 Feet
old stump NP 12 N $85^{\circ}05'$ W 40.50 "
Pine root S $64^{\circ}43'$ W 37.00 "
Root of Oak 12 S 51° E 29.00 "

to heart of stump @ $7^{\circ}10'$ for

All the stumps are too close except
the SE and I may have to give it
up or a bad job and run it in.

We take all the tools in
and get back home @ 6.05 P.M.

Get in 4 Hrs & 45 Minutes in AM
and 3. Hours and 20 minutes in PM
making a total of 8 Hrs 5 mts

Fordyce get 1. Hr 15 minutes less than
I but I will give him full time on
his day was really all taken up

Still staying with Fordyce - cloudy
all day.

John W. Curo

Sept 13-1917 Thu

Heavy rain all last night Cloudy
& misty this morning

Fordyce-Boltz & I to in my car @ 7⁴⁵
take our lunch along - Teacher and
go with us as far as school House

We drive to pt near E $\frac{1}{16}$ bet 11-14-
138-29 where I lo the car and put in
limb $\frac{1}{16}$ viz

Ht hub 1320.00 E I chain E 10.68 ft to "

1330.68 E. where I set hub for limb

E $\frac{1}{16}$ only which I set transit - back
right West and turn 89° R and run N
North on 8° Var

Leroy "Roy" Hardy axman at @ 8-25 AM

Ht 126.50 cen of old main road SW & NE -

@ 281 @ Okuland, old road NW & SE

@ 300 ^{Hub} stake @ 533 Culvert hole -

cen of 20 foot ravine or draw probably
drains West

600 Hub big hills lie about 60 rods East

900 " @ 1103 cen of road ^{and} bear E & W

1160 Hub fine chance for road to here - almost
level and no stumps. From here on slightly
rougher slopes down grade to the North

@ 1200 Hub 1500 Hub 1674. Hub

John Weiss.

Sept 13-1917 Cont'd (22) 13829. ¹¹ Ser II 53
Timothy Turk

Continue North along random E 1/4 line
of sec 11-138-29

@ 1800 Hub @ 1812.50 Cen of Branch of Wabedo
Road bears NE & SW 2100 Hub

@ 2124. bow of same branch bears NW & SE
this bow circles around East end of lag
alder thicket but solid land.

@ 2250 enters solid meadow - string land

@ 2292.50 Cen of dry 3. foot creek bed in
meadow - Culvert site - Water runs West

@ 2325 L.V. meadow E & W

@ 2400 Hub @ 2550 ent West end of
small wet marsh

@ 2600 Culvert site

2675 L.V. marsh

2700 Hub. Quit for dinner and walk
back to car where we eat lunch

Hardy eats at home - leaves at old
Arthur Ockerlund place

PM

We run in car to about 3000 N and
continue North

@ 3000. Hub @ 3100 touch West edge
of 2. acre marsh @ 3203.50 Cen of
Main Wabedo - Pine River road -
bears SW and East. @ 3300 Hub

John H. Carr

54

Sept 13-1917 Cont'd

(23)

138-29-Sec 11 E 1/4 km
Tombally Twp

@ 3400 enter marsh. 3500 Culvert site

3540 L^v marsh. ^{stony} 3600 Hub 10 ft N of big stump3615.50 Hub @ 3725 enter small ^{round} stonymarsh @ 3800 L^v same @ 3900 Hub3960 enter marsh-egg shape @ 4000 Culvert
site 4100 L^v marsh E & W 4200 HubAt 2:45 and 2:50 o'clock P.M. a
partridge drums about 150 feet East of
hub 4200 N. still very dark and cloudy
but no rain - almost mist all day - so far.At 2:55 P.M. Partridge "drums" again
right on the tick of the watch every 5
minutes At 3:01 Partridge again "drums"

stopped over one minute on his "line"

@ 3-9 3/4 (3:10) P.M. Partridge drums Still at
Hub 4200 N. @ 4500 Hub:4567 cen of creek - 6 ft wide - 3 ft deep solid
bottom - runs west 2 inches water@ 4700 foot of hill which is a sharp "hog
back" easy to cut down runs NW & SE
15 ft high 4784.80 Hub on "hog back"

top of hill: @ 4800 hub on N. slope

4850 foot of hog back @ 5030 wire fence

@ 5000 cen of East end of narrow marsh 30
ft West of East end Marsh is about 100 ft
wide and extends N 80° W about 600 feet

John W. Cunn

Sept 13-1917 Cold

(24)

138-29 S. 11

Timothy Twp

55

@ 5030. a fence 2. wires runs E & W along
N side of marsh @ 5100 Hub

5174.50 hub on top of ridge

5340. Hub Quit for night walk
back to car and get home @ 5-50 PM

We only take 30 minutes for dinner and
get in 4^{hrs} 20 minutes in a.m. and 5 hrs +
20 minutes in P.m. = 9 hrs 40 minutes

Sept 14-1917 Friday

138-29 Timothy Turp. Crow Wing Co Minn

Curo-Fordyce-Batz go in car via
Sch Ho with Mrs Elsie Sears and
Lela Fordyce who are lo @ sch Ho
then drive car up Jail Lakewood and
walk around N end of Clough Lake
Lo home @ 7:30 am. "Roy" Hardy joins
us @ car to Sect 2-3-10-11 138-29 where
US nales call for

Oak 12 S 84° W 234 LKs = 154.44 Feet
BP 14 S 15° E 352 " = 232.32 "
NP 16 N 78° 30' E 416 " = 274.56 "
This cor is 346 " = 228.36 "

North of M.C. N^o

where US nales call for

I do not have the M.C. N^o on my plat
and do not know what to look for.

We find an old line of blazes
Beginning about 240 feet North of
the lake and running North and
at a point in line with these blazes
I chain from the lake bank

North 228.36 feet and set stake

J. John W. Curo

Sec Monumented May 24-1923 - 2-3-10-11 By John W. Curo

Sept 14-1917 contd

(26)

138-29
Trinity Turb

57

for limp sec cor over which I set the
transit and @ about 8' on. I run
N 78° 30' E to the only NP 16" stump in this
locality

Then run S 84° W to an old big oak stump
the dist bet the two stumps should be
154.44 Feet added to 274.56 Feet
Total 429.00 Feet⁰⁵ and chains
413.50 feet my chain being 16.50 feet
short 429.00 into 16.50 = .038461

I set a square hub for the line
cor by proportion after which the old
B.T.S. stand as follows: "

NP Stump N 78° 30' E 264. (short 10.56)

Oak " S 84° W 148.5 (short 5.94)

New B.T.S. Uiz " 8°

Dead WP 15" S 58° 30' E 33.32 Feet

Birch 5" S 34° 20' W 44.04 "

Paplar 12" N 57° 45' W 50.35 "

Pap 10" N 30° E 12.58 ft (old line tur)

Run South on 9° on 228.36 feet and set
hub in South slope of sea wall at
about the exact spot for M.R. which
proves to me that this is the line cor

At 11-AM I send Hardy for Glen
Glover who lives on SW 1/4 of SE 1/4
John W. Curo

sec
cor Monumented May 24-1923- 2-3-10-11 By JWCuro

58 Sept 14-1917 cont'd

(27)

138-29

Timothy Twp

of Sec 2-138-29 and who claims to know
where this cor is. G. lower arrives @ 1-30 P.M.
and seems to think the cor should be
about 200 feet further East and "100 link"
from the lake. but he is wrong and finally
agrees with me that the cor is correct
where I have set it.

I set this cor for G. lower and @ Chaloud
or rather ran South from a post they had
set here at one time probably 10 years
ago but neither I or G. lower remember
exactly just where it was.

Run East 8'. But sec 2 & 11,

@ 300 Hab. @ set hab and

or I cannot be with the crew tomorrow

I lay out some work for them viz

We go to Temp Cor to 11-12-13-14-

138-29 from which I start a picket line

South @ $8^{\circ}21'$ or and another

picket line East @ $10^{\circ}15'$ an angle

taken from random line which reads 7'

At Fordyce 6-20 P.M. Supper with Fordyce
and home to the farm after supper

Get in 4-30 a.m. & 5-20 Hour P.M. - 9 H. 50 m.

John W. Conrad

Sept 15-1917 Saturday

I leave Fordyce - Batz + Hardy catching
line and stay all day with Brewer trying
to get settled up. He & I go to Hackensack
in my car where Brewer gets a check from
the Hackensack Bank for \$1149.⁰⁰ in
full for SW 1/4 of SE 1/4 Sec 19-140-30
and we come back to Pine River

Brewer charges me \$400. for my Ford
and charges nothing for his services
or attorney fees for helping get it closed up
Foreclosure proceedings of the Lovely
Mortgage - Sheriff's fees - Probate proceed-
ings &c amount to about \$580. Brewer
bill

400

\$980 Total

Bal due me about \$169.⁰⁰ except some
abstracts + records still to be paid for
Brewer gives me his check for \$125.⁰⁰
and will pay me the bal of \$44. less
abstract fees &c as soon as the
amount can be ascertained

I deposit my \$125. check with Farmers
State Bank. pay them \$25.⁵⁵ in full
and get a check back with \$99.⁴⁵ deposit
I pay EE Iverson of the Pine River

60 Sept 15-1917 ^{and}

29

138-29

Timothy Tark

Garage \$22.17 in full for fixing my
car last week - Then call up Wesley
to arrange a hauling trip tomorrow
(Sunday) then go to the farm - get
Alma - & the kids come back to
Pine River in evening again call up
Wesley who says there is a gang coming
from Beamed to hunt.

We return to the farm and get
ready to leave early for a hunt
tomorrow

Ben Fordyce - Nick Balz - Leroy Hardy
Cut a mile of line East bet 12 & 13 -
138-29 They Ld 7-30 a.m. -

stop 30 minutes for noon and get back
home @ 6-30 P.M. They worked in a.m.

4-H 30 minutes and in P.M. 6 Hours 00. minutes
Total 10 Hrs - 30 Minutes

John W. Curo

Sept 16-1917 Sunday

Alma got sore and delayed our hunting trip. Reed - Harold & I took the '20' and the Remington '12' and looked for the '8 Partridge's. Also saw last evening between our place and Ed Harmon's but we found none.

Leonard Emery came over on his horse to look for his calf and staid till after dinner we had 2. hens but from Ed. Harmon @ 40¢ each (cheap enough!)

PM

We all start in for Spider Lake but meet John Norman who says "no ducks there" and we return to Pine River thence to Geo Hardy's place. He and

Huss are both gone and we drive home via the old grade and Wahedo Lake. Alma, Harold - Reed and I - Saw 6.

Partridge and get 3. Run over White's? dog near Rose's place and maybe killed him. Got home 8-45 Over night on the farm.

John A. Caro

138-29

Tomahawk Turkey
Crown Wing Co. Minn

Sept 17-1917 Monday

Alb and Gerald start school at Pine
River and come in with me in the FordAlb & Reed come along - I drive to Ben
Fordge and L. there @ 7⁵⁵ am with
Fordge & Boltz - Pick up Hardy and we
go to Co. of 2-3-10-11-138-29 and

Continue East bet 2 & 11 - U

@ 300' Hub. @ 392.80 Hub @ 600-900 and
957.80 Hub 1200 Hub. enter half acre marsh
strong 1350 ft. enter hills being big ridges
running mostly N & S and almost too
rough for a road 1432.20 Hub 1500 Hub
sunny, Cham across river 300 ft from
1432.20 and @ 1732.20 set stake +
67.80 = 1800 Hub where Hardy breaks
his scythe and goes for another
@ 2100 Hub @ 2185 Hub ^{18°00'} on brink of
sharp hill 1000 feet south of small
lake in marsh - Good lake for ducks
where Chas & Webber and
have shot ducks for years. Lie mostly NW
thence down hill

@ 2300 Hub foot of hill enter dense brush
being tall alders. Eat dinner 1 hour.

P.M. Continue East @ 2400-2640 Hub
John W. Curo

Eggs about \$26. 10 per doz and at Pine River & 85 per dozen

(32)

13829
Timothy Turk

63

Sept 17-1917 Could

@ 2700 Hub look for 1/4 cor bet 2 and 11

138-29 where US males call for

H. To. Y @ 21

Tamarac 9" N 20° E 3 Links distant = 1.98 Feet

" 5" S 35° W 3 " " = 1.98 "

all appear to be gone and we continue
East. @ 2798 cross 4 foot creek in
swamp nearly dry - no current. 3000 Hub
3035 L. swamp. 3300 Hub

2410 enter open cranberry bog
mostly south. (bear North 50 feet then
East and S 20° W 400 feet then East)

at 3533 west edge of sharp point
20 feet wide coming from the North
cross point 10 ft North of south
end.

at 3600 Hub in bog

@ 3744 cross wire fence 2 wires N & S.

3840 L. swamp bear South - then
10 ft North and then East.

@ 3900 E Hub 10 ft 20 of narrow.

50 ft strip of swamp running
East.

at 3900 + 126.30 = 4026.30 East
intersect our random 1/16 line
coming from the south at
John weirs

Sept 17-1917 Monday

Alb and Gerald start school at Pine River and come in with me in the Ford

Alb & Reed come along - I drive to Ben Fordyce and L. there @ 7⁵⁵ am with Fordyce & Batz - Pick up Hardy and we go to Co. of 23-10-11-138-29 and

Continue East bet 2 & 11 -

@ 300' Hat. @ 392.80 Hat @ 600-900 and 957.80 Hat 1200 Hat. enter half acre marsh story 1350 Ls. enter hills being big ridges running mostly N to S and almost too rough for a road 1432.20 Hat 1500 Hat rising again across ravine 300 ft from 1432.20 and @ 1732.20 set stake + 67.80 = 1800 Hat where Hardy breaks his scythe and goes for another

@ 2100 Hat @ 2185 Hat ^{1800'} on brink of sharp hill 1000 feet south of small lake in marsh - Good lake for ducks where Chas & Webber and home shot ducks for years. Lin mostly NW thence down hill

@ 2300 Hat foot of hill enter dense brush being tall alders. Est dinner 1 hour.

P.M. Continue East @ 2400-2640 Hat
John W. Curo

Spine above \$36. 11 pay my note at First Natl Bank of Pine River & \$5 for lunch

Sept 17-1917 contd

@ 2700 Hub look for 1/4 cor let 2 and 11

138-29 where US notes call for

H. To. Y @ 21

Tamarac 9" N 20° E 3 Links distant = 1.98 Feet

" 5" S 35° W 3 " " = 1.98 "

all appear to be gone and we continue East. @ 2798 cross 4 foot creek in swamp nearly dry - no current. 3000 Hub

3035 L. swamp. 3300 Hub

2410 enter open cranberry bog mostly south. (bear North 50 feet then East and S 20° W 400 feet then East)

at 3533 west edge of sharp point 20 feet wide coming from the North cross point 10 ft North of south end.

at 3600 Hub in bog

@ 3744 cross wire fence 2 wires N & S.

3840 L. swamp bear South - then 10 ft North and then East.

@ 3900 E Hub 10 ft 20 of narrow.

50 ft strip of swamp running East.

at 3900 + 126.30 = 4026.30 East intersect our random 1/16 line coming from the south at John weirs

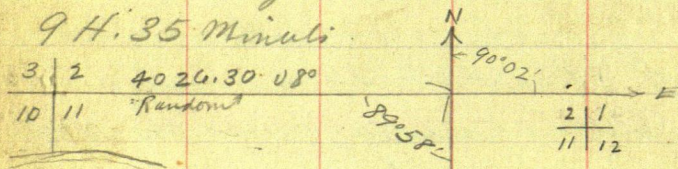
64 Sept 17-1917 cont'd (33) 138-29 Timothy Tark Crow Wing Co

53 40 + 45.70 = 53 85.70 North the
SW angle of the random lines reads
89° 58' angle read in the rough
without my reading glass

Intersection is 10 ft 20 of a
40 foot slough which extends
E at 50 feet

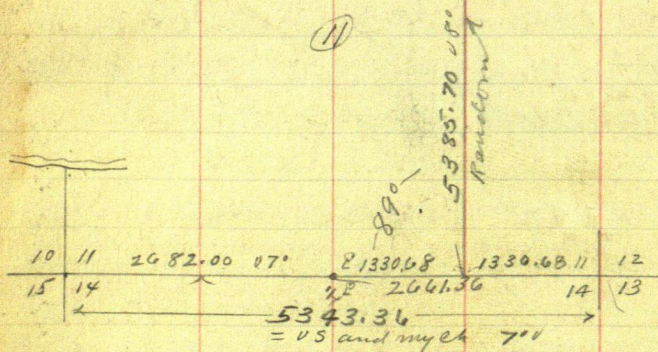
Quit for night get home at
6-30

We get in 4 Hours and 5 minutes in AM
and in PM get in 5 H. 30 M Total
9 H. 35 Minutes



138-29

(11)



Not; this plot shows a mighty close
check on the needle reading which I take
closely

(34)

138-29
Trinacly Twp
Crow Wing Co Minn

65

Sept 18-1917 Tuesday

Lo @ 7-30 AM. Take Mrs Sear as far as
school house then drive to "Roy" Hardy's
place pick him up then with Batz and
Fordyce drive to point SW of NE cor Sec 11-
138-29. and walk West to hub 4026.30 E
and continue random transit line E
bet Secs 2 & 11. Van still 8° E

@ 4200-4500 Hub @ 4628 Cross
Glenn Glouers private road bear
NW + SE just a wagon track leading
to his house which sets about cen of
his forty which is SW-SE of sec 2,

@ 4705.80 Hub on top of big hill

@ 4800 Hub @ 4882 Cross wire fence
N + 2 2 wires

5100-Hub @ 5250. Cen of main
Jail Lake or Wabido Lake road bear
NE to W: @ 5300 and 5400 Hub

and look for cor to sec 1-2-11-12-
138-29 where US notes call for

WP18 N 54° E 59 LKs = 38.94 Feet

WP26 N 18° W 8 " = 5.28 "

W Birch 8 S 41° W 46" = 30.36 "

" " 10 S 76° E 26" = 18.16 "

We find the stump of the NW tree
John W. Cunn

Monumented May 26 1923 Cunn

1-2-11-12-138-29 Monumented May 26-1923. Cur.

66. Sept 18-1917 contd ⁽³⁵⁾ 138-29 Timothy Teap

which bears all the ear marks and I immediately say it is one of the old B.T. but the scribe marks do not show axe backs and the flat spot near base convinces me it is O.K. from which I set a peg for line on after which the roots of the NE stump check to a faggel for course and dist and birch roots check SW & SE perfect except that the SW Birch is 2 feet too far West

all O.K. at 9' var and I set a 2x12" Hat for the line on to Decr 1-2-11-12-138-29 and

@ 7°30' Var mark New BTS viz

JP 8N 47°17' E 59.05 Feet

JP 7N 27°45' W 74.08 "

JP 8S 46°08' E 6.60 "

JP 5S 54°33' W 28.63 "

To flat spot at base @ 7°30' Var

Ht 5300. East this

On sets S 33°23'E 91.50 feet

on Right 5637 " "

^{33°23'}
Sin = $.55024 \times 91.5 = 50.35 E$
Cos = $.83501 \times 91.5 = 76.40 S$

Ht 5350.35 East the corner to John W. Carr

(36)

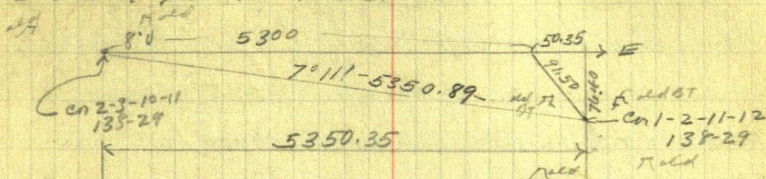
138-29

Sept 18-1917 could

Trinity Temp 67

Secs 1-2-11-12-138-29 Act

South 76.40 Feet



$$5350.35 \text{ into } 76.40 = .014279 = \text{Tang } 0^\circ 49'$$

$$0^\circ 49' \text{ Sine} = .01425$$

$$\text{Cosine} = .99990 \text{ into } 5350.35 = 5350.89$$

Correcting

Bet Secs 2 and 11-138-29 = (.01428)

P.M.

At 5100 E. w. chain S 72.83 set hub & stake

" 4705.80 E " " S 67.16 " " " "

" 4500 E " " S 64.35 " " " "

" 4200 E " " S 60.06 " " " "

At 4026.30 East w. chain

West 13.53 to 4012.77 East

Then South 57.30 feet where we
 set a 2x2x12" Hub for the line East
 1/16 in bet sec 2 and 11-138-29
 with ball stake

At 3600 E. w. chain S 51.48 set hub & stake

" 3300 E " " S 47.19

" 3000 E " " S 42.90

John W. Curo

68 Sept 18-1917 Contd ⁽³⁷⁾ 138-29 Timothy Tusk

Ht 2700. East we chain West
24.83 feet to 2675.17 East
then South 38.20 feet where we
drive a 3x3x30 inch birch stake
for the '14 cor bet secs 2 and 11-

138-29 with new BT viz
12" lamin stump sets North
7.80 feet to flat spot near base
@ 8' cor Stump is 3 1/2 feet tall
broken off at the tip

Ben Fordyce and I correct
this line after dinner as far west
as the '14 post bet secs 2 and 11
138-29 while Hardy and Bolz walk
a mile south and cut a rough
picket line south between secs
13 and 14-138-29

If we were to correct the whole
line bet secs 2 and 11-138-29
the correction would be as follows
.01428 off a foot south for each
foot East

300 E. goes S

392.80 E " S

600 E " S

Sept 18-1917 cont'd (38)

138-29
Trinity Twp 69

Bet Sec 2 and 11-138-29

| | | | |
|---------|--------|---|--|
| 900.00 | E goes | S | |
| 957.80 | " " | S | |
| 1200. | " " | S | |
| 1337.59 | " " | S | 19.10 Ft to E $\frac{1}{16}$ bet 2 & 11 |
| 1432.20 | " " | S | |
| 1500 | " " | S | |
| 1800 | " " | S | |
| 2100 | " " | S | |
| 2185 | " " | S | |
| 2300 | " " | S | |
| 2400 | " " | S | |
| 2640 | " " | S | |
| 2675.17 | " " | S | 38.20 Ft to $\frac{1}{4}$ Cor bet 2 and 11 |
| 2700 | " " | S | |
| 3000 | " " | S | |
| 3300 | " " | S | |
| 3600 | " " | S | |
| 4012.77 | " " | S | 57.30 Ft to E $\frac{1}{16}$ bet 2 and 11 |
| 4200 | " " | S | |
| 4500 | " " | S | |
| 4705.80 | " " | S | |
| 4800. | " " | S | |
| 5100 | " " | S | |
| 5350.35 | " " | S | 76.40 Ft to Cor of sec. |

1-2-11-12-138-29.

John W. Lewis

70 Sept 18-1917 Contd

(39)

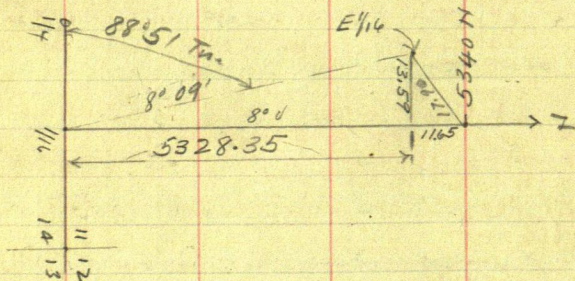
138-29

Trinachy Twp

To get the correction of the random
East $\frac{1}{16}$ line of sec 11-138-29

Set transit on Hub 5340. N
from which the East 416 bet seen
2 and 11-138-29 2d5

S 49° 24' W 17.90 Feet



49° 24'

$$\begin{aligned} \text{Sine} &= .75927 \times 17.90 = 13.59 \text{ W} \\ \text{Cosine} &= .65077 \times 17.90 = 11.65 \text{ S} \end{aligned}$$

$$\cos \alpha = 0.65077 \times 17.90 = 11.65 \text{ S}$$

$$5328.35 \text{ into } 13.59 = .00255 =$$

$$= \text{Tang } .00255 = 0^{\circ} 9'$$

| | | |
|------|---|---------|
| | | 0° 09' |
| Tang | = | .00262 |
| cat- | = | 381.97' |

$$= .00262$$

$$cat' = 381.971$$

James W. Curro

(40)

138-29
Trimally Turp

71

Sept 18-1917 cont'd

We get thro connecting bet 2 and 11-138-29
being the East half mile. Then Fordyce
and I hustle back to the car and
drive to the East 1/4 bet 11 & 14-138-29
where we walk 1/4 mile East and
chain south bet Secs 13 and 14
along a picket line just being cut by
Hardy and Boatz.

Rough chain

@ 215 cross road E-W 300 slabs
600-900-1200-1500-1800-2100-2400
2700 set stake then I look for the 1/4
Cor bet Secs 13 and 14

O to F at 4- 138-29 US notes say
NP 26 S 67° W 45 LKS =

" " 25 S 4° W 81 " =

All appear to be gone and we
continue South

@ 3000-3300-3600-3900-4200-4500-
4800-5100 set stake

At 5100 + 115 = 5215 S we inter-
sect our transit line coming from
the West at a point 49 feet West of
the stake in the marsh set by.

James Ingram for the car to Secs
13-14-23-24-138-29

John W. Curo

Sept 18-1917 continued
as the crew only cut the big brush and
staked this line crooked and as
the last quarter mile was only run
by me with big compass this line
or chaining does not count and
I only run the line as a bluff to
see about how long this line is
We used a 300 ft ch and chainage
is almost 0.10 within 2 feet.

Fordyce & Boltz walk home and I
walk back a mile north with Hardy
get the car and go home @ 6-50
P.M. - Fordyce has just had time
to finish his supper. I work 2-
hour in evening on notes.

In AM we get in 4 H 30 M and in
P.M. 5 H 50 M. Total 10 H 20 M.

I get in 2 Hour & 10 in evening notes
12 H 20 M for me.

John W. Curo

Sept 19-1917 Wed.

Ben Fordyce and I Ls @ 7-30
 a.m. with Leacher and Lela F. and
 as it is raining we to Leacher & Lela
 @ sch too and go back home and I
 figure my corrections

Figuring Corrections

E $\frac{1}{16}$ See 11-138-29

.00255 of a foot West for each foot North

| | | | |
|---------|-----------|------|------------|
| Hub 300 | N guess E | 0.76 | off a foot |
| 600 | N " E | 1.53 | Feet |
| 900 | N " E | 2.30 | " |
| 1160 | N " E | 2.96 | |
| 1200 | N " E | 3.06 | |
| 1500 | N " E | 3.83 | |
| 1674 | N " E | 4.27 | |
| 1800 | N " E | 4.59 | |
| 2100 | N " E | 5.36 | |
| 2400 | N " E | 6.12 | |
| 2700 | N " E | 6.89 | |
| 3000 | N " E | 7.65 | |
| 3300 | N " E | 8.42 | |
| 3600 | N " E | 9.18 | |
| 3615.50 | N " E | 9.22 | |
| 3900 | N " E | 9.95 | |

43

Tomaiky, Tueb

Figuring Corrections
E 1/16 Dec 11-138-29

= .00255 W. for each foot North

Наб 42 00.00 N. gaw 10.71

" 45 00. N. " W. 11.48

" 47 84.80 N " W 12.20

" 48 00. N. " W 12.24

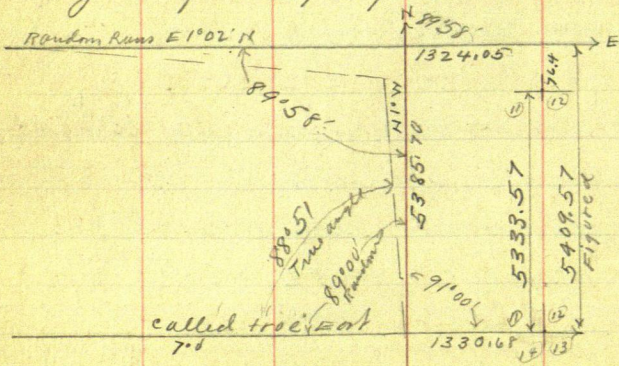
| | | | |
|----|-----|-----|-------|
| 51 | 00, | N.W | 13.01 |
|----|-----|-----|-------|

" 51 74.50 N " W 13.19

at 53.28.35 North the E 1/4 bet 2 and 11
138-29 sets West (13.59 Figured)
(See page 70 of this book)

55

Figuring Length of East line Sec 11-



$\sin = .01803$
 $\cos = .99984$

$$1324.05 \times .01803 = 23.87 \text{ Ft N}$$

| | |
|----|----|
| 14 | 13 |
| 23 | 24 |

5215
Rongkeh

Jahn W Euro

Sept 1914 1917 Cold

It rains all forenoon and I figure corrections 4 hours in a.m. Dinner in Herbert Smith 18-6 ft 2- Heavy colored lakes dinner with Fordyce.

Fordyce makes stakes.

Hardy comes out on line and as we do not show up goes back home.

Curo - Hardy - Fordyce each get in $\frac{1}{2}$ day. Batz does not work.

P.M.

I go home in car in drizzling rain cut wood - take Alma - Elmo - Gerald & Reed to Harmon's for milk for road and shoot partridge on our way home.

Elmo and Gerald stay out of school today on account of the school wagon has not yet got instructions from Hardy & Linden to call for them.

I get hair cut & shave at P. Rier. Over night at home on the farm.

John W. Curo

Sept 20-1917 Thurs

Alma + Reed come with me to Ben Fordyce farm. Ilo and Gerald get off at Pine River for school.

Mr Fordyce is going to Pequot to the fair so Alma goes with us as far as "Roy" Hardys where she stays to dinner

Fordyce and I take our lunch
 Ls @ 8¹⁰ am pick up Leroy "Roy"
 Hardy and correct up the East $\frac{1}{16}$ line
 of sec 14 138-29 as far North as hat 4200.

To tie into the Jail Lake road
 at corrected hat 4173.50 N set hub
 for Angle point with BTS viz
 Pap 9° N 44° W 44.51 Feet

" 6° S 55° 34' W 47.82 Feet
 Lined from the line N to $\frac{1}{16}$ line which
 runs on about 7° 51' var

From here we run new road cen
 From Hat 4173.50 N 42° 42' E
 435. feet intersecting the main
 Jail Lake or Wahedo road in cen of
 a 16" galvanized culvert thro a
 beaver dam. We then begin at hat
 4200 N. and correct the entire $\frac{3}{4}$
 mile south after which Hardy goes
 John W. Carr

Sept 20-1917 contd (40) 138-29 Timothy Tulp 77

home to dinner and Fordyce and I walk
north to the car where we eat our lunch
P.M.

Cross-Hardy-Fordyce beg @ Kemp cor
hat at 11-12-13-14-138-29 which I intend
to leave where it is for the line cor but
will chain the mile E out just for a bluff.

Reg @ Sec cor as above chain E bet
12-13-138-29 on a crooked picked line
@ 300 stake on top of big hill @ 500 still
on big hill @ 600 stake on south slope
@ 900-1200 stake @ 1310 enter marsh
which extends 50 feet south and
runs NW 500 feet

@ 1500 stake in marsh 40 feet
from so side and 40 ft from N side

@ 1600 LV mark @ 1800 stake

2100-2400 stake @ 2587 Beaver Slaw

SW & NE along west end of grass land
which extends E out

Look for $\frac{1}{4}$ cor $\frac{1}{4}$ Cor bet 12 and 13
138-29 where US notes call for

I to X @ 1

Aspen 15 N $27^{\circ}30'E$ 31 LKS =

" 15 S $50^{\circ}W$ 107 " =

We find nothing but about 30 rods
John W. Carr

Sept 20 - 1917 could (47) 138-29
Timothy Turk

now old John Flynn has squared up a
paper line for the 1/4 cor when he
passed up from the South several years
ago but it is not the corner

Continue west

@ 2500 we are 100 ft N of road of bog
and on a solid front coming from the N

@ 3000 station mark 40 ft N of so
side marsh runs NE 20 ft.

@ 3075 20 marsh NE & SW

marsh is mostly solid

@ 3300 stake Lots of fresh deer
tracks from here East to stake

3600 and 3900 at 4200 - 4500

stake @ 4800 stake @ SW end of 4 rod
slough 5100 - ... @ 5400 E stake

30 ft N of skin 2 acre marsh which
runs NE & SW @ 5600 under mark

NE & SW @ 5700 stake in marsh

at south side Marsh runs

100 ft NE and 50 ft SW

@ 5757 about interest Donner

old line in East end of marsh

Donner line comes from the North

and as there seems to be something

mighty wrong with this chainage

John W. Curcio

Sept 20-1917 Could (48) 13829 Timothy Trip 79

Course of the line I use Stanley compass
as a check on Sommer line and find his
random run on 8° or which is O.K.
as far as Sommer is concerned

We look for the contacts

7-12-13-18-138 R28 and 29 where US
notes call for 'I' 138-29

Spence 8N66°E 12 Lks = 7.92 Feet

Hopen 12S89E 12 " = 7.92 "

Tam 12° S 64 W 8 " =

Hopen 15 N 11° W 16 " =

We do not find anything and all
walk back to car and drive to Roy Hardy's
where I leave 'Roy' take Alma and
reed and drive to Ben Fordyce

Via school House where we pick up
Teacher and Lela. This blows out
1/4 mile from Fordyce farm - Alma
Mrs Bean (the teacher) and Lela walk
on to Fordyce - we get line fixed but
it blows out again and we run in
on a flat wheel. Meet Geo. Lazette
who has just brot Mrs F. home and he
takes my blow out tube and gives
me an old patched red tube which
holds. We all eat supper with Fordyce
John Adams

80 Sept 20-1917 (49) 138-29
and drive in to Pine River where
we meet Ilo and Harold and where
the air goes out of my bum tube
I go to Pine River Auto Co Garage
get a new Goodyear tire $3\frac{1}{2} \times 30$
@ \$2.35 and a Goodyear tube
@ \$3.65 Give them my check for
\$ 20.00 and will pay balance tomorrow
Pd 35¢ for eggs and set them in
some ones car thinking it was mine
and the car drives off.

Spend two or three dollars for
grab and go home to the farm

Sept 21-1917 Friday

I take Mo and Harold to school then go back to the farm and cut wood till noon. At 12:35 PM Alma Reed and I hide the key under the door step and drive to Pine River where I call up Geo Hardy who says we may be able to get our checks if we come out. But at 1:25

We drive to Ben Fordyce where I leave Alma + Reed then with Fordyce drive to "Roy" Hardy's place where I pick up Roy and his wife + baby (or two) and we drive to Geo Hardy's and take supper then drive to Chas Claud Mitchell's and hold Town meeting

Bills viz

John W. Cline \$84.20 { work \$65.00, Car \$15.00
Board \$4.20

Ben Fordyce + others

Drive to Geo Hardy's - Then to "Roy's" then to Fordyce - Then home @ home 2 o'clock in the morning.

Sept 22nd 1917 Saturday

Deposit \$84²⁰ with Farmers State Bank
of Pine River Minn. My Bal was \$178

Total Bal now is \$25.98

Draw out cash \$10. Bal deposited \$75⁹⁸

Chk to U. G. Sauer of Pine River Motor Co

\$ 7.74 ^{paid} Bal in Bank \$68²⁴

Alvin - Ilo - Gerald + Reed go to

Jenkins to arrange a duck hunt for
tomorrow take supper with Wesley - Mrs

John Cochran is there I give W & C

chk for \$20⁰⁰ bal in full for Two tires + 1 labor

Balance Bank \$48²⁴ and pay Dwight

\$4⁰⁰ for shells.

Get back home about 9 P.M.

Sept 23-1917 Sunday

Go home with Gerald and drive to Jenkins
^{could drive the entire distance}
 Get Slurght and pick up
 and his dog and we drive
 to old Cross Lake ^{on} grade - then up
 the grade about 6 or 8 miles and to
 Gerald to watch can then walk East
 along old spur over two miles then
 one mile S.E. along old Logging road to
 "Dog" Lake - shoot 20 ducks (all Mallards
 but one) Slurght kills about 19 of them
 at one shot (5 shells) and we go back to
 Jenkins where as Slurght wants to get
 a picture of the ducks I leave them
 all and Gerald + I get back home about
 9. P.M. - Alma + I to have been visiting
 Rileys and only get home an hour ahead of
 us.

Trimathy Twp
Crow Wing Co. Minn

Sept 26-1917 Wed

I take Flo & Gerald to school on my way to see Hardies. Pick up Hardy & Huss and in A.M. correct up the North half mile bet sec 26 and 27 - 138-28 as given on Page 136 Book $\frac{3}{203}$ - 157' Correction = .03404 of a foot West for each foot South

At hub 1504. so we chain West 51.23 feet and set hub on line line over which I set transit - Focus South on $\frac{1}{4}$ Co and run in 3 hubs & tall stakes along Calp's East boundary - across meadow

At 1200 S-chain South 75 feet to 1275 as where I set hub and ran S 53° 'W 55.50 and set N $\frac{1}{16}$ bet Secs 26 & 27

138-28 Calp's NE cor of his 40 acres over which I set transit Turn 90° to line line and start a picket line West

At 900 S. Ch W. 30.64 ft set hub & stake

" 600 S " W 20.42 " " " "

" 300 S " W 10.21 " " " "

which finishes the correction of the entire mile bet 26 & 27 - 138-29 ^{9 must be 138-28} _{Corrected Jan 10-1933}

Walk back to cor at Hartman's - Hardy's for dinner
John W. Curo

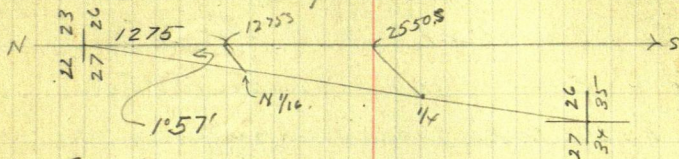
(2)

138-28
Timothy Twp

87

Sept 26-1917. could
Correding

.03404 W



See page 136 of Book

P.M.

Care & auto - Geo Hardy & J.N. Huss pick up Char Mitchell at Houston's corner and with Care's car drive to cor of sec 22-23-26-27-138-28 previously established See Book No

from which we run North on random along a picket line previously cut by back sighting on random South

North bet 22 x 23-138-28 & about $9^{\circ}40' E$

At 300 Hat in Hardy's field 300 ft East of some old Buildings

@ 446 cross wire fence E & W about 25 ft west of NE cor of fence

@ 600, - 900 - 1200 - 1500 - 1800 - 2100 - 2400 - set Habr

At 2640 look for $1/4$ cor bet 22 x 23 138-28 where US notes call for P to E @ 3' As per 128 $80^{\circ} W 10 LKs = 6.60$ Feet

Birch 5 S $75^{\circ} E 5$ " = 3.30

John W Care

Sept 26-1917 Cont'd

All are gone and we continue North
bet 22-23-138-29 ¹³⁸⁻²⁸ 9°40'

@ 2700-3000-3300 set hubs No locks

At 3330 enter solid stony marsh
bear NE+SW At 3360 (paced) cross
old road SE+NW.

@ 3390 enter softer marsh

@ 3400 Culvert site 100 feet west
of a water hole where lots of fresh
deer tracks show that they are
coming here to drink

The marsh is narrow and bears
NE about 600 feet

@ 3500 N. L. marsh NE+SW

I lose my pipe off the stem and
cannot find it-

@ 3600 N set hub No locks in any

@ 3825 N. (paced) cross same road
bears NE+SW

@ 3900 Hub @ 4200 Hub Van roads 9°40'

@ 4500 set hub and quit for night
all go back in my auto

Supper + over night with Hardy

All get full day except Mitchell who gets
1/2 in P.M.

John W. Cress

Time Sheet Working For Timothy Trap Crow Wing Co. Minn 138-28

Sept 1917

October 1917

See Page 92

7 26 27 28 29 30

SW

1 2

John W. Curo

1 1 1 1 0

Auto

2.00 0 0 0

Geo Hardy

1 1/2 AM 0 0 0

Team day

0 8/24 8/27 8/30 1 0

John N. Huss

1/2 PM 1 1 1 1 0

Lyman H. Hardy

1/2 PM 0 1 1 1 0

Chas Mitchell

1/2 PM 0 0 0 0 0

Board Sheet Mrs Hardy

| Boarding Curo | DL | PL | DL | PL | DL | PL |
|---------------|----|----|----|----|----|----|
| Curo Boarding | 8 | 0 | 0 | 0 | 0 | 0 |

Note: I put in bill for Roy E Bryant for work he done July 30 & 31-1917. 1/2 day each

@5 = \$5.00

Furnishing Sweeney Bryant and Sweeney tools July 31-1917 in day \$5.00

Sept 27-1917 Thursday

This is Chas Mitchell's mail day and he goes to Pine River. I give him 5¢ to get me a com-cob pipe.

Curro-Huss- Geo^{and} Lyman Hardy with Hardy's team drive to the work and @ Hub 4500 N. continue random North North bet 22 and 23-138-28 @ 9'40' @ 4800 - 5100 - Hub - 5280 hub

At 5280 N turn 90° to random and run E out 179.73 feet to point, ^{5283.06 N} where the sec cor ought to be as compared with the two miles of line South. This would be straight for two miles if we made no crook in our picket line a mile south.

At our present point being the cor to Recor

14-15-22-23-138-28

US notes call for BTS viz 8'15"0

Birek 6 N 10° E 7 LKS = 4.62 Feet

" 7 N 37° W 12 " = 7.92 "

" 5 S 30° E 14 " = 9.24 "

" 5 S 57° W 18 " = 11.88 "

We do not find them but will look again later.

Sept 27-1917 cont'd

(6) 138-28
Timothy Twp

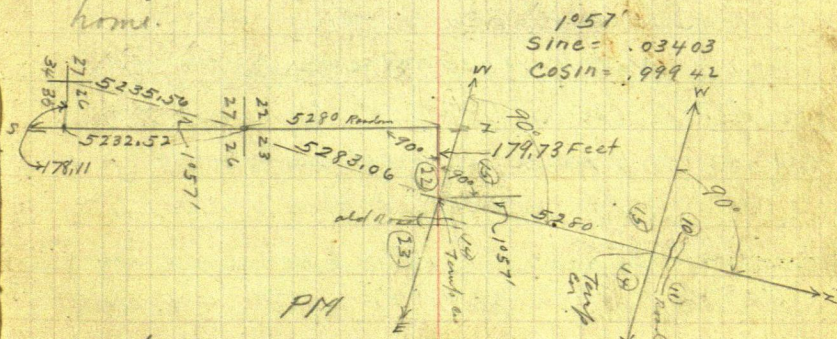
91

To our line just run N bet sec 22 and 23
138-28 runs $1^{\circ}57'$ west of what we think
the line should run on - and as we do not
want to continue our line north at this
angle we decide to get closer to what
we consider the true line so at hub

5280 N I turn 90° to random and run
East 179.73 feet and set hub O.O. for
line on to sec 14-15-22-23-138-28
over which I set the transit - back
right West on hub 5280 turn 90° R.
Then $1^{\circ}57'$ further to the Right and run
North Bet Sec 14 and 15-138-28 $\angle 7^{\circ}43'$

O.O. Hub Temp on about 75 ft west of N.E. corner
@ 300 Hub quit for dinner

All eat lunch except Geo Hardy
who quits at noon and takes the team
home.



North bet 14 and 15-138-28 $\angle 7^{\circ}43'$

@ 600-900-1200-1500-1800-2100-2400-2700, Hub

John W. Cunn

Sept 27-1917 Cont'd

North bet 14 and 15-138-28 v 7°43'

@ 3000 set hut and quit for night

Arthur Sylvester Hardy 15 years old

Son of Geo Hardy comes after us @ 6 P.M. with
Geo Hardy's gray team we get home about 7-15
in the evening. Mr

is still working at Hardy's 1914 Ford car This is
his 2nd day in the car. Mitchell forgets my pipe
and returns my 5 cents also forgot Hass's tobacco.

Note: I cut following ad from the

Bramend Daily Dispatch of Sept 15-1917

"\$500 reward for Ford Car 1917 Minn License
N° 124616. Engine N° 1.334.612. Car has hole in
lower R. hand corner. Dent in back end of body
Beacer running from Running board to body
Notify Trucatte Bros Grocery store Bramend Minn"

The car was stolen from in front of the
store and the ad reads about or above.

Nati: Hass and Lyman Hardy
worked 1/2 day in PM, Friday Sept 7th
1917 on the random line bet 22 x 23-138-28

Nati: At about 2100 N on our random
bet 14 x 15-138-28 Bozonson's house nt: East
about 400 feet. Nati At 1/2 bet 14-15-138-28
US nati say. Pt. E @ 4. Azp 105 70° E 12 LKs - 7.9 2 Ft
WPG N x 5 W. 16 LKs - 10.56 ft all are gone
John Weens

Sept 28-1917 Friday

Cum-Hurst-Lyman Hardy - Hardy's gray
team & Buggy drive to Bogersons house to the
team and continue North

North bet 14^{mi} (15-138-28) 0 7°43'

@ 3300 Hub Euler quite heavy hardwood
timber Pop-Birch-Oak-Ternwood etc

@ 3600 Hub @ 3700 Euler thick dense timber
3 inch alder-poplar Birch + hardwood
Low grassy land.

Ht 3790 (paced) dry creek bed (very dim)
runs West. @ 3900 Hub about 4000 L^o
low land all very stony @ 4200-

4500-⁶ 4800-5100 Hub
⁶ Lone W. Pine - 12 inch

Ht 5280 Hub Temp cor to Secs

10-11-14-15-138-28

where U.S. notes call for

Aspen 8 N 10 E 30 Lks = 19.80 Feet

" 10 N 50 W 55 " = 36.30 "

" 10 S 35 E 22 " = 14.52 "

" 10 S 18 W 35 " = 23.10 "

The timber growth here indicates that we
are might close to the corner as there
are a lot of old Aspen stumps.

We pass this up and walk
John W. Carr

94 Sept 28-1917 cont'd

(9)

138-28
Timothy Twp

about $\frac{1}{4}$ mile N.W. to the house of
James W. Killin who on June 22-1916
got his paper on an 80 acre homestead
being SE SW and SW SE of Sec 10 - T138
R28 This was once taken by Wm Barker
who sold to Schwartz of Jenkins

Killin knows of no corner and we
walk back to line

At 5248 N an old 6 inch squared
up brick tie - bears East 74 feet
The tie is now down and 15 years
or more old. (Sets 74 E & 32 S of 5280)

At 5400 N set stake

At 5533.40 N. cen of old road
which runs East to the old Cross Lake
RR grade and West to Killin's house

At 5593 N. an old blazed 12" brick
stump bears East about 10 feet

This is probably an old original
US line tie. We cut and burn brush
near the cor and quit at 5.53

Walk back to team and get home
@ 7.20 P.M. long after dark. Still
with Hardy.

James W. Curran

(10)

138-28

95

Timothy Twp
Crown Wing Co Minn

Sept 29-1917 Saturday

Curo-Huss Lyman Hardy & team - Drive
to Bogerson's L. team and walk to cor of sec
10-11-14-15-138-28 where we cut a circle
of brush around our temporary corner. Put
brush on fire. Hass and Hardy then cut
line North E + West while Curo tries to
make the "hundred + one" old poplar
stumps check out with one another for
old B.T.S.

We continue our transit line about
600 feet North and set a picket

Then with transit on Hub 5280
N. which is really 10563.06 feet North
Turn 90° to random and run West
about 500 feet and set a picket

Eat lunch at the fire

PM

Then at Hub 5280 N which is really
10563.06 ft N. turn 90° to random and
run East about 900 feet and at 1.50

PM we start back and walk a mile South
to Hub 5280 being 5283.06 N and is our
temporary corner to sec 14-15-22-23-
138-28 over which I set transit focus
North on random line. Turn 90° and
John & Curo

96

Sept 29-1917 cont'd ⁽¹¹⁾
run a picket line138-28
Timothy Twp.
Crow Wing Co. MinnWest bet. secs 15 and 22-138-28 $\vee 7^{\circ}43'$
about 400 feet and set picket

Transit theodolite and run

East bet. Secs 14 and 23-138-28 $\vee 7^{\circ}43'$ @ 75. feet (paced) cross old N & S road
set pickets and cut line about 1000 feetEast and quit early on account of
making out our bills as the Town Board
meet Monday next, Oct 1-1917.

I am going to be in Brainerd Oct 2nd
Tuesday to meet the Crow Wing Co Board
in behalf of Timothy Township to see if
we can get them to furnish iron monu-
ments for our section corners and to
put in the NE cor. of 138-28 and 138-29
as provided by law L. fields & 45 as Haskins
& 5-45 Our bills are as follows

John W. Curo Enggr work and use of survey
tools in survey of live road bet. secs
22 & 23-138-28

Sept 26-27-28-29-1917-4 days @ \$5 - \$20.00
" 26 Auto with survey tools 2.50

Furnishing surveyor Bryant and transit
on survey of Twp road bet. secs 14 and
23-138-29 July 30th 1917 day 2.50
" 31 " " 2.50

Sept 30-1917 auto with curo

1.25
\$28.75

Sept 29th 1917 could

I get supper with Geo Hardy and
as the board wants me to notify Ben
Fordyce to meet with them Monday Oct
1st I drive there in auto at about 7-30

L. Fordyce about 11-P.M. with Mrs Watter
Pears (See page 46) at Pine River about
midnight. Leave Wm S. who is going to Bed
and go home to the farm.

Sept 30-1917 at home on the farm. Go to
Pequot to see Jim Ingram.

Oct 13-1917 I received a check for
\$30⁰⁰ in full from the Town of
Timothy

John W. Curr.

Oct 22nd 1917 Monday

Gerald Carr and I go hunting Lr the farm early and drive Ford Car a few miles E. of Swanberg in 2nd new soft snow No weed chains have trouble turning around.

Drive back to Geo Hardy's in heavy storm and get dinner. Stay over night. make a drive in P.M. on the "Point" drive out 2. no see seen.

We have a can of salmon and some of our own lunch which we put on the table but eat with Hardy. Gerald should be in school.

Oct 23rd 1917 Tuesday

Hunt deer with Vern and Geo Hardy and go home hungry @ 3 P.M.

Nov 25th 1917 Sunday

Lr home @ 1 P.M. on account of dinner being late. Eat at Crommetts hotel in Pine River. Darn mud. at home.

P.M. Pay Loner's garage \$2¹⁴ gas oil and go to Geo Hardy's for supper and over night. Working for Timothy Trup 138-28.

John W Carr

Lyman H and Hester visited 2 1/2 days before I came. Bang 19-23-25 Nov 1917.

(2) 138-28

Trinity Trip

99

Nov 26-1917 Monday Road Survey Cont.

John W. Carr Survey Transit 200"

Chi steel tape chaining fairly close about
1 foot off in a mile or closer using plum-bob
a part of the time Geo Hardy - Lyman
Hardy & J. N. Hurst helping Hardy is
liam driver us to Begorson's old place
and Beg @ Sta 00 being 5280 ft N.
and 179.73 feet East (See Page 91) of the
cor to near 22-23-26-27-138-28 run

East bet Sec 14 and 23-138-28 18.30

@ 73 feet cor old N & S road @ 200-400-slats
400 stony marsh N & S. 600 slats Ls marsh
800-1000-1200-1400-1600-1800-2000-2200-2400 slats
2600-slats @ 2440 look for

1/4 Cor bet 14 and 23-138-28 where
US notes call for N to W @ 2"

Line 12" N 3 E 30 Lks = 19.80 Feet

Hypoten 14554 W 28 " = 18.48

We do not find it and continue East
2800-3000-3200 slats 3310 cor old N & S
road 3400-3600-3800-4000 slats Enter
bottom land 4200 slats. Ent spurs - Ashore
4400-4600-4800-5000-5200 slats all
slats set with liamit except from 0 to 800 E

Over night with Hardy John W Carr

set with liamit before

Nov 27-1917 Tuesday

All go hunting - Get no deer

Nov 28-1917 Wed

Same crew - Hardy's team later
 in cut Geo Hunt a while in am
 while we look for B.T.S. Lyman Hardy
 Hunt & crew go to con

13-14-23-24-138-28

where US notes call for

W.P. 5 N 22 E 12 LK = 7.92 Ft

" 7 N 28 W 29 " = 19.14 "

" 7 S 20 W 34 " = 22.44 "

Spruce 4 S 25 E 28 " = 18.48 "

We cannot find the B.T.S but find
 a fine line up of old spats E & W
 and N & S from which I set a
 4 X 4 X 60" dry spruce post in hole
 "Tarp Sec Con"

New B.T.S. @ 8° 30' Var

W.P. Stp 20 N 84° E 31.05 Feet

Poplar 3 N 40° W 34.20 "

Dead WP 10 S 53° W 51.90 "

" " 8 S 3° W 22.70 "

" " 10 S 18° E 29.40 "

For Con 13-14-23-24-138-28 @ 8° 30'

John Weiss

Set with Gortley
Compass

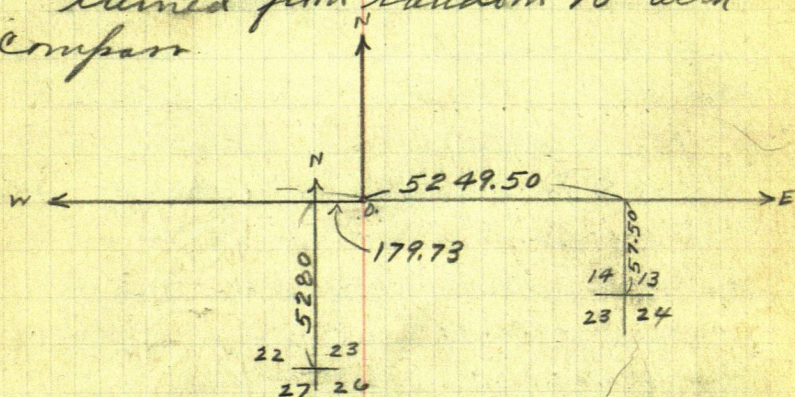
④ 138-28
Timothy Twp

101

Nov 28-1917 Contd

in counting the stakes running East I find a mistake of 1 chain 200 feet an extra stake having been put in between Sta 3000 and 3200 E

At our stake 5049.50 E Cor to So 57.50 ft to this stake is wrong so that at 5249.50 E. the cor to 13-14-23-24-138-28 sets South 57.50 Feet turned from random 90° with compass.



We then work West and quit for night
Lynman gets the team & goes at Verner
but does not catch Huns and I tell
we get near home. John H Kulen-
kamp of So St Paul. rides to P.R. with
me after supper John W. Cune

Nov 29-1917 Thursday

Thanks giving. All day at home and over to Emerys with Alma and the kids in. Take Leonard and Carrie for auto ride to Backus

Nov 30-1917 Friday

All day at home on the farm
Merle Emery - Leonard and Mr
Erickson at our place for dinner

I write letter till mid
night and longer

John W. Cunn

Dec 1-1917. Sat

Lv home early - Radiator freezes
and delays me an hour at Sawyer's
garage. On Hardy's about 9 am
Hardy & Huss take my car to attend
joint meeting of Timothy and
Barclay Twp's of Judicial
road on Co line

Lyman & I work Walk 1:
On 14-15-22-23-138-28

Ht bet 0. being 5280 N and 179.73 E
we begin half a foot South .50 S
and run West almost exactly with
line running East of this point

West Bet 15-22. 138-28 ¹⁸³⁰

200-400-600-800-1000-1200-1400-1600.

1800-2000-2200 - stakes set with line
enter grass & brush - stony (not back)

@2400 stake Grass extends 400 ft S
to a few dry oaks & wp. 2600 sth. Lv
grass.

2640. W. look for 1/4 bet 15th & 22nd
US nalis say K to W @ 3. 138-28

Bk Ash 5" N 48° W 28 LK3 =

Aspen 105 50° E 19 " (or 14 LK3) =

All are gone continue West
John W. Ellis

Dec 1-1917 Cont'd

2800-stk.: 2892 W old road N and S

3000-3200-3400-3600 stakes set with

liant 2614 W corn Killen's road

br NE & SW. Set liant @ 3600

back right East and chain West

all this on picket line previously
cut by Lyman Hardy & J. N. Huss

@ 3800-4000 stk @ 4025 W ent grove

& brush N and S 4200-stk in meadow

where it is 300 ft N and 200 ft so
to solid land. At 4250 Hay stacksets 20° N. This is a tin stock thornly
one cut here. apparently.4400 stk in meadow which appears
to stretch in narrow neck 1000 ft SW

4500 LV meadow NE & SW

4600-4800-5000-5200-5400-5800-6000
set stakes which I will line up tomorrow
with liant.At 5280 West we look for
Cn to 15-16-21-22-138-28 where
US notes call for

Spruce 14" N 45° E 17 Ls = 11.22 Ft

Aspen 10" N 60 W 37 " = 24.42 "

" 10" S 25 E 39 " = 25.74 "

John W. Curo

Dec 1-1917 - contd

⑧ 138-28

105

R. Maple 1455° W 73 Lks = 48.18 Feet

We do not find them and walk home
after dark.

5 deer nearly run over Lyman Hardy
@ 5 minutes to 12 - He shot once but
did not hit one.

Little Glenn Hardy has been very
sick and they sent him to Pine River
with Alfred Hardy who went in
@ 4-P.M. in his own Ford car.

Geo stays in P.R. with sick boy
Alfred Hardy and "Art" Hardy brings
my car back about 7 P.M.

All stay over night at
Geo Hardy's place

Jatm W Cuss

Dec 2-1917 Sunday

Mrs Hardy gets an early telephone call @ 3-30 about - to come to Pine River Alfred takes her in with my car.

Mrs J.N. Huss come over and get breakfast and takes care of the kids Mr Huss eats with us Huss goes to Jenkins to buy a team Lyman and I get team ready to go to work Telephone rings @ 8 am. to say that "Gleim is dead"

This hangs up the work and I write up these notes till noon.

Rainy & misty all AM.

Lyman and I get an early dinner and take team and drive out on survey and with transit at stake "3600" W we set all survey stakes on line line or far west or stake "6000 W" which is or far West or Lyman and Huss has got the line cut and as far as we have chained Then take in all the tools.

Mrs and Mr Hardy have arrived from Pine River in my car and want to go back so at dark we go to get new ones.

Working For Timothy Trwp-138-28- Road Surveys

Nov 1917

Dec 1917

Continued on Page 131

| | 25 | 26 | 27 | 28 | 1 | SUN 2 | 3 | 4 | 5 | 6 | 7 | 8 | 14 | 16 | 19 | 20 | 21 | 22 | SUN 23 | 24 |
|--------------|-------------|------|----|----|----|----------|-----|---|---|---|---|---|----|----|----|----|----|----|-----------|----|
| Continued on | John W Quro | 1 | 0 | 1 | 1 | 1/2 | 0 | 1 | 1 | 1 | 1 | 1 | 0 | 0 | 1 | 1 | 1 | 1 | 1 | 1 |
| | Auto | 2.30 | 0 | 0 | 0 | 0 | 0 | 0 | 0 | 0 | 0 | 0 | 0 | 0 | 0 | 0 | 0 | 0 | 0 | 0 |
| | Geo Hardy | 0 | 1 | 0 | 1 | 0 | 0 | 1 | 0 | 0 | 0 | 0 | 0 | 0 | 0 | 0 | 0 | 0 | 1 | 0 |
| | Team | 0 | 2. | 0 | 2. | 0 | 0 | 2 | 2 | 2 | 2 | 2 | 0 | 0 | 0 | 2 | 0 | 0 | 2 | 2 |
| | J. N. Huss | 0 | 1 | 0 | 1 | 0 | 0 | 1 | 1 | 1 | 1 | 1 | 1 | 1 | 1 | 1 | 1 | 0 | 0 | 0 |
| | Lyman Hardy | 0 | 1 | 0 | 1 | 1 | 1/2 | 1 | 1 | 1 | 1 | 1 | 1 | 1 | 1 | 1 | 1 | 0 | 0 | 1 |
| | Huss Team | | | | | | | | | | | | | | 2 | 0 | 2 | 0 | 0 | 0 |
| | | | | | | | | | | | | | | | 2 | 0 | 2 | 0 | 0 | 0 |

131

T. heussall Pd.

Hass & Lyman worked

Nov 19/11 1917 1/2 day in PM also Nov 23 and 24 1917 = Total 2 1/2 days

David

Mrs. Hardy Board Sheet Boarding: Curo

1917

Dec 1917

Nov 1917

1917 Oct

[illegible]

107

Dec 2nd 1917 cont'd

Pine River and I go home to the farm
for over night supper at home

Dec 3rd Monday 1917

Funeral today @ 1:30 P.M.

Alma Reed + I go then I take
Alma home - Get Check from
Mpls for \$21⁰⁰ in full for bal of
work done for Lake Hill Turp
173-35 Hubbard Co.

I deposit it with Farmers State
Branch of Pine River get \$5 place
\$16 to my credit give Alma \$2.

My bal in the Farmers Bk is \$17.21
I give V.J. Soier \$2¹⁰ for gas and
bal in full. Take Geo and Mrs Hardy
+ kids and Mrs Huss to Hardy's for
supper - where Ben Fordyce has been
waiting since noon for Town meeting

At 8 P.M. I take my car and
the town board to Chas Melickell's
place where we held a meeting

Put in Bills org in full for
Dec 3rd inclusive 1917

Curs. \$20. Geo Hardy \$5. Huss \$11²⁵
John W Curo

(12)

138-28

Timothy Tent.

109.

Dec 3rd 1917 Cont'd

Mrs G. A. Hardy board \$7. Lyman Hardy
\$15 and Team \$5 = \$20.

Hardy adds 2 meetings to his bill @ \$2.50
each so his bill totals \$10.

Hass adds same as Hardy making
his bill \$16.25 Chas Mitchell 2.
meetings @ \$2.50 = \$5.

Ben Fordyce one day at meeting
\$2.50 + \$1. for his horse = \$3.50

I get subpoena warrant \$20. and get
back to Hardy's for our night

Dec 4th 1917 Tuesday

sent my trap warrant to First State Bank of Pine River Minn with an open envelope addressed to Gladys M. Cus 213 N Franklin St Rochester Minn and wrote the Bk to put a \$20.00 draft in the envelope and send it

We dine with Hardy's team to James W. Killin H.E. on SW SE 10-138-28 they are all away to Jenkins Put our team in barn. I open the door with skeleton key and tell Hardy - Hurr & Lyman that the door was not locked.

We chain it on random picket line test 10-11-138-28 cut by Hurr and Lyman about 3000 feet. Then beg @ sta 0.0.

Run E 1600 feet on picket line cut by Hurr & Lyman Hardy Meet Vern Hardy and Char E. Webber who have come out to hunt in 1 inch of snow which fell last night and are staying at Boyzars house. Fearfully cold all day. All go back to Hardy's for night. Hurr walks both ways. Geo too. Hardy hunts all day.

John W. Cus

Dec 5-1917 Wed

Hus + Hum walk to Ours hunting camp
Lyman and I go to same place with
lean sled Hardy Hunt with Ours.
Hus - Lyman + I work

Beg @ sta 00, which is mhd "5280 N"
and is also "10563.06' N" See Pg. 95.

Run East

Bet 11 and 14 - 138-28 - U 8° - E

all stakes set with transit

200-400-600-800-1000. stakes

From 700 To 1050 E small bunch of WP
timber on our Left

1075 E old sled road N and S

1200-1400 stakes enter 6 to 12" ash
enter creek bottom

1575 Creek 3' wide runs SE

1600 stake 1700 to creek bottom

1800-2000 stakes in spruce - W.P.

Birch and Poplar 2100 enter Tam

2200 stake enter tam swp N & S

2294 Creek 3' wide 1' deep runs

SE 2400- stakes in big dry tam

2600 stake

At 2640 look for 1/4 bet 11 and 14

138-28 U.S. natl. say I to X @ R.
John W. Cuss

Dec 5-1917 Cont'd

Tann 4 N 50 W 84 Lks = 55.44 Ft

" 6 S 9 W 210 " = 138.60 "

all are gone - Continue East

2800-3000 stakes 3100 Lv lām swp

3200 stakes Lv spruce - East open

Quit for night

Geo Hardy stays over night with

Vern & Webber - Huss - Lyman

and I go home with team - I take

supper with Huss - in evening

I write letters to Glad-Harold -

Hilda - ad to Pine River Sentinel

Blaze - send Ch \$1. to John W. Smyth

Co for 85¢ caps

Geo Hardy hunts all day with Vern

John W Curo

(16) 138-28
Trimathy Twp
Crow Wing Co

113

Dec 6th 1917 Thursday

Huss walks up. Lyman and I go
with team Geo Hardy hunts with
Urn and Webber

We continue East bet 11th and 14-138-28
3400-3600-3800-4000-4200-4400-4600
4800-5000 stakes all set with transit
5100 enter open swp 5200 stake

5270.50 E. Cor sets S 80.50
ft At this pt being Cor to

11-12-13-14-138-28 US Nails say

Turn 6 N 82° E 115 LKS = 75.90 Feet

W.P. 6 S 56° E 85 " = 36.10 "

W.P. 6 S 39° W 25 " = 16.50 "

We find the stump and body of tree of
SW tree very plainly marked from which
I set a 4x4x60 inch dry WP post

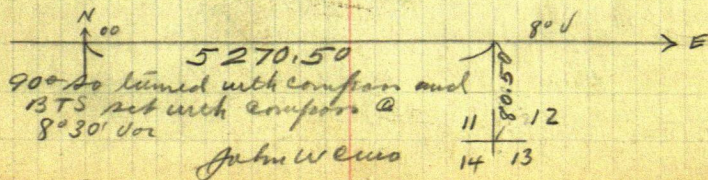
@ 8'30" var from face of stump - Cor sets
in marsh Now BTS viz 8'30"

Green leaning WP tree 14" N 68° 30' E 109.20 FT

10 FT WP stub 16" N 9° W 131.90 FT

WP Stump 14" S 40° E 61.00 "

" 16" S 61° W 46.00 "



(17) 138-28

Timothy Twp Crow Wing Co

Dec 7-1917 Friday

Lyman Hardy and team Hunt & Cur-
dine to Bogosnow. In team and from stake
5400 N continue North

North Bet 10-11-138-28

5533 cross wagon road E & W

5600 stake ^{5800 stake} 5850 cut low land 6000 stake

6050 enter alder brush all very stony

6200-6400 - - - stakes all set with

liantit 6495 (Paced) Creek 3 ft wide

1 ft deep runs SE. touch E. edge of
meadow: a stack of hay lies W. 50 ft6600 stake: 6680 Beaver Dam - enter team
swamp big dead up turned tamarac
too badly burned no good for wood

Hay cut around edges of swamp

Swamp runs NE and SW 200. W 200.

N 200. then NW

6775 Stack of hay lies E 20. ft

@ 6800 stake 7000 sth. 7100 swamp lies E 400'

7200 stake swamp lies NW 1000 ft where

There is G. stake of hay: 7275 L. U. swamp

NE and NW: 7400-7600-7800-8000 - stakes

all set with liantit Look for 1/4 Cr

Bet 10-11-138-28 US Nates say

P.T.E. @ 5.

(18) 138-28

Dec 7-1917 could

Aspen 10 N 15 W 13 = 8.58 Feet

" 8 N 30 W 24 = 15.84 " zone

8200-8400 stakes: 8550 cut open cranberry

swamp NE and W 8600-8800 stakes it is

150 ft W and 150 ft E to salied land

9000 stake: it is 300 W & 700 E to salied

@ 9200 stake it is 1200 ft E to salied land

9240 L. U. swamp SW & NE. 9400-9600-9800

10,000-10,200-10,400-10,600 stakes all

set with liantit Look for Cr to

2-3-10-11-138-28 US Nates say

Birch 6 N 65 E 28 LRS = 18.48 Feet

Aspen 7 N 60 W 20 " = 13.20 "

Fir 4 S 32 E 22 " = 14.52 "

Aspen - S 55 W 15 " = 9.90 "

Very cold - walk back to camp Hunt & I
walk home. Lyman hauls Ford Car for
Webster and team - to see Hardy's as they give
up the hunt without killing any deer.

It was 12° below this morning and 18°
below in evening Still with Hardy who
works around home today

John W. Curcio

Dec 8th 1917 Saturday

Lyman Hardy with team & sled Huss and
Curo 18° below (Huss Walker) drives to
H.E. & James W Killin on SW & SE Sec 10
138-28 L. team carry lunch and find
SE and SW B.T.S @ cr to sec

2-3-10-11-138-28

by flat chain from face of old B.T.S. I set
a 4 x 4 x 60 inch dry pine post.

New B.T.S @ 7°45' U

Pop 3 N 42° E 71.10 FT

Pop 4 N 65° W 35.00 "

Pop 5 S 43° W 50.40 "

Pop 4 S 15° E 64.30 "

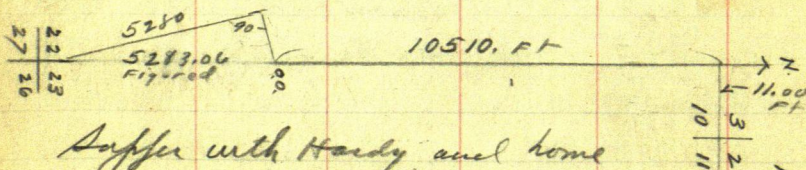
At 10510. FT N this cor sets

East 11.00 feet

At 5283.06 + 10510 = 15.793.06 N

This cor sets East 11.00 Feet

See Page 91.



Supper with Hardy and home
to Pine River with E. Malvin Olson of
Fergus Falls. Minn

John W Curo

Dec 9th 1917 Sunday

On my arrival home last evening I find
Ch \$15 from Elmer B. Horst (Baldus me \$15)
Ch \$45. " DE Parker (" " " \$20)

I give Alma these checks indorsed by
me and she is to deposit same in First
State Bank of Pine River I then give her
Ch \$20. to get Elo's coat and a signed
Ch to Pine River Mercantile Co \$ - 11.73
to be filled out by Alma

Lo home with car @ 10-30 go to Pine
River give Querson Ch in full to Maloi
Linn. \$67⁸ bal in full.

Dinner to Dan Morey's farm Then to Leonard
Polevson farm and back to Morey's for a late
dinner & over night

Dec 9th to 15th inc surveying for E Malvin
Olson of Fergus Falls Minn in sec 20
139-28

Dec 16th 17 & 18 at home

Dec 18-1917 to Geo Hardy's by auto for
supper -

Nat'l on Friday and Monday Dec
14- & 16th 1917 Lyman & Huss cut line west bet
sec 9 & 16 & 16-21-138-28

Dec 19-1917 Wed

JN Huss and his new team driver
Lyman Hardy and Cuss to Killin's homestead
where we leave our team & lunch. Killin
& family gone - I relocked door with skeleton
key but the crew think I forced the door
relocked. Make stakes and chain West
on line cut by crew

Beg @ 00. West bet 10 and 15 8° 138-28

@ 600 touch S. end of round. Good open marsh

1200 ent N. end of open up-tilled tim

surf NW-SE - good grass @ 1700 W we are

50 ft S. of Pop pt coming from West. @ 1800 edge of

surf and poplar 2000 L.V. surf bet E-SW

2140 cross Killin's wagon road NE-SW

3030 W ent surf NW-SE @ 3100 we are 25' S of solid

land; 3130 L.V. surf NE-SW @ 3204 W cross big

stone $3\frac{1}{2} \times 3\frac{1}{2}$ which appears to be a meteor
or it is in the ground in such a way as to
leave no doubt that it fell from some great
height ground sunken in around edges

at 3825 ent open tim surf ^{NE-SW} up-tilled

rocks 3975 cat tails 4800 L.V. NE-SW

5400 set stakes and quit for dinner

Ht $\frac{1}{4}$ Cor bet 10-15-138-28

US water each for I 1: X @ 31

John W Cuss

(22)

138-28

Dec 19-1917 Conlet

Timothy Lemp

119.

N. Birch 6'S 20°W 21 LKS =

" " 6 N 52°E 22 " =

We do not look for them much or they are surely gone. eat our lunch at Kili's house P.M.

Work the Liarsuit on line and set all stakes with the Liarsuit about 3000 W and quit for night. Lo with Hues' calls at 4.38 as Hardy's @ 5-43

Still with Hardy. Was sick last night and could eat no breakfast

Gen Hardy - Verrin - Woblesen - Rubie - Spivier & Jack Robinson went hunting up to Robinsons' camp in the "Red Cedar Swamp." they left Monday P.M. Dec 17th 1917 and are there yet. Fine weather for hunting. Snowed last night. Bright Sun this P.M. warm & melting snow

Note:- Monday evening I had my old front auto liner put on over my front tier at Souer's Garage cost \$1.35

John W. Cress

120

(23)

138-28

Trinity Camp
Crown Wing Co.

Dec 20-1917 Thursday

Same crew Hardy's team

Set bal of stakes with line to West 15
Co. 9-10-15-16-138-28 where US nalis say

Aspen 10' N 28° E 28 Lks = 18.48 Feet

Y. Pine 10 S 58° E 46 " = 30.36 "

" 10 S 30° W 24 " = 15.84 "

Aspen 12 N 78° W 35 " = 23.10 "

We find bath pins lines down
but plainly marked - uprootedand set cor by flat chain from foot
of where trees once stood - lines stand
O.K. for course @ 8°Set 3x3x40" lim post for line cor to
9-10-15-16-138-28 New BTS @ 8°

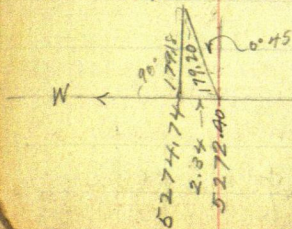
Poplar 5" N 16° 45' E 44.10 Feet

" 4" N 48° 15' W 79.30 "

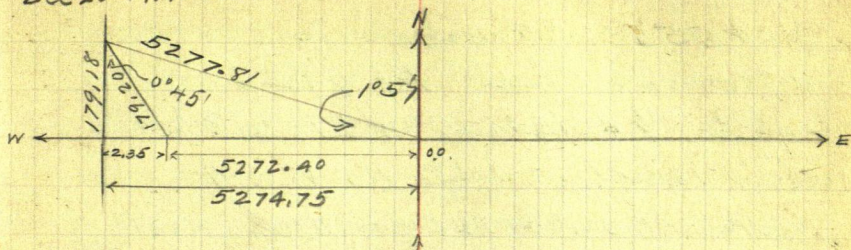
" 3" S 45° 00' W 8.20 "

" 7" S 4° 00' E 8.40 "

@ 8° Van before Set with level compass

HH 5272.40 W this cor bears
N 0° 45' W 179.20 feet

Dec 20-1917 contd



$$\text{Sine } 0^{\circ}45' = .01309 \times 179.20 = 179.18 \text{ N}$$

$$\text{Cosine } .99991 \times 179.20 =$$

$$5274.75 \text{ into } 179.18 = .03397 = 1^{\circ}57'$$

$$\text{Tangent of } 1^{\circ}57' \text{ is } .03405$$

$$\text{Cotang " " " } 29.3711$$

$$\text{Sine } 1^{\circ}57' = .03403$$

$$\text{Cosine } = .99942 \text{ into } 5274.75 = 5277.81$$

At 5274.75 West cor 16

9-10-15-16-138.28 Sets No

North 179.18 feet All random
stakes set every 200 ft with transitWe get thru at noon - eat our
lunch at Killins house (Killins &
family gone) and in
P.M.Drive South until and Beg @
stake 6000. West back sight E and
continueWest Bet 16th and 21st ^{Van} roads 7°50'
at 6600 touch S. end of open line w/ w/ f
John W. Euro.

Dec 20-1917, cont'd

Timothy Tubb

at 7553 old wagon road N^W 1/4 S
 at 7800 W. set Hub. Ht 7820 W
 look for 1/4 bet 16th & 21-138-28
 where US notes call for K. to W @ 4

Aspen 6° S 4° W 26 LKS = 17.16 Feet ^{gone}
 " 10 N 15 1/4° E 25 " = 16.50 "

about 7900 W start down big hill
 8625 foot of big hill Entin big ravine
 NW and SE: 8880 Creek - runs SE
 6 feet wide - not much water: 9100 L
 big ravine N & E - thence up big hill
 9600 W. rest quit for night

Note:- This line begins at a point 0.50
 (1/2 ft) of a foot south of Sta 0.0.

Snow melting warm day. Geo + Vern
 Hardy - Spencer - Webber - & Robertson
 return from their hunt with no deer.

John W. Curo

(26) 138-28
Timothy Twp 123
Crow Wing Co Minn

Dec 21-1917 Friday

Lyman Hardy - J N Huss & team. Continue
West: @ 9.800 top of big hill. Thence
down hill: @ 10.000 W foot of hill Thence
across level land where we cook coffee
P.M.

@ 10.560 look for cor to Secs

16-17-20-21-138-28 where US notes

say Bk Oak 8" for Corner

N. Birch 10 N 75 E 25 LKS = 16.50 Feet

" " 6 S 80 E 40 " =

" " 7 S 68 W 57 " =

" " 7 N 2 W 16 " =

We do not look for these as they are gone

Next Bet 17-20-138-28 " 7.50'

@ 10.600 stake: 10.680 enter N. end of open
marsh runs 100' N and 500' SW. Big stone,
rat houses and cat-tails. 11.025 LV

11.175 W foot of big hill thence up hill;

11.275 East brink of big hill Itub on
tops and quit for night

Geo Hardy tries all evening to get
Clauel Mitchell Marvin Peterson
and others to help us on the survey
but they refuse. Ruben Hardy agrees
to go tomorrow to help us out in place of Lyman

John W Cues

124

(27)

138-28

Timothy Turp

Dec 22-1917 Saturday

All day at home in Pine River
figuring corrections for Timothy Turp.

Mrs Hardy + kids go to Anoka

I take Alma + Reed to Petersons at
noon & come for them in evening

Mrs - tells me about Hil

Joseph Blythe pays me \$7⁵⁰ in full

I buy an Edison Phonograph from
Pett Lindstrom @ \$30. 6 records \$3

= \$33⁰⁰ pay him \$3. bal to be pd 3 months

Telephone Glad 50¢ Wills Haralad
at Margie. to come home for Christmas

Pd P.O. Rent 35¢. Bk 361.

Pd 25¢ join Patriotic League. I got
Reed a doll @ 25¢ Alma the nail cutter
@ \$1⁵⁰

John W. Cuss

(28)

138-28
Trinity Twp

125

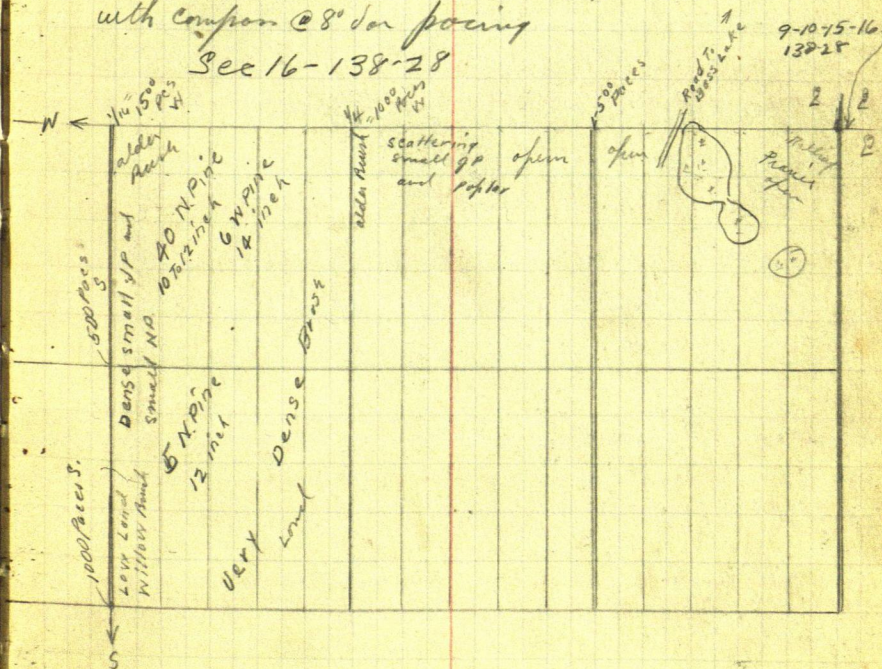
Dec 23-1917 Sunday

Harris laid up with a lame back - Lyman Hardy
 at Ancker. Only Geo + I work. I go home in
 my Ford @ 6-30^{am} go to Harris to give L & E
 Hardys and back to Harris for breakfast. This is my
 2nd one as Alma got me a lunch before I left

Geo Hardy + team with hay rack takes me to
 Sec 16-138-28. where we go to team and walk to
 NE cor 16- start a picket line

South bet 16-17-138-28 @ 80° ^{Barley} Compass
 then walk back and start a compass line West
 with compass @ 8° for pacing

Sec 16-138-28



Dec 23-1917 contd

We rode West $3\frac{1}{4}$ miles and South $\frac{1}{2}$ mile and culminated the 240 acres of land. Snow very soft and wet. we take home a load of hay for Huss and up-set. Get home very late covered with 2" soft snow

Weather turning colder I stay my first night with Mr & Mrs Huss

Mrs Carrie Hardy is staying with W. H. Sanborn Anaka Minn

(30)

138-28

Timothy Trip

127

crow wing & other

Dec 24-1917 Monday

Dam cold NW wind & drifted. I to
Harr' at 7 am walk to Hardys. Rube H
and his team go with me. We continue

West Bet 17th 20-138-28

Set a good line of pickets - quit at 3 PM
and go home. I to Hardys @ 3-30 in Ford
fix up radiator and show out at Bull
Kings. Finel heavy drifts near home
Harold arrived home @ 4-45 this
morning. Alma and I go to Pine River
and back at dark with some things for
Christmas

Alma keeps on dam silent. I get
on my news and get up @ 11-30 I find
her reading. I kick up things. Harold
comes down stairs also. Alma
goes up stairs to sleep. Harold sleeps
with me. fearful cold night.

Dec 25-1917 Tuesday
Christmas

All day at home on the farm near
Pine River Good dinner

Alma - Ilo - Harold - Reed - Harold
and I at home

Dec 26-27-28-29-1917 Home
all the week Very Cold

Dec 30-1917 Sunday.

Alma & I go out and find the first
rabbit in the snares.

I walk to Halliwellworths and
telephone Geo Hardy to come get me
as the snow is too deep for the "Ford"

Harold & I get dinner @ 1-30 and
start to walk to Pine River - Leone Alma
and the kids feeling fine

Meet Geo Hardy & team near Halliwell-
worth and go back home with him and
Mr Hardy who has returned from

Anahe All get supper with
Hardy. I stay with Huss - Harold
stays with Hardy - Warner.

Rec^d 10⁸⁵ from Buttabin Jackson W. C. C.

(32) 138-28

Timothy Twp 129
Crow Wing Co Minn

Dec 31-1917 Monday

Harold J. Curo Transit- 200 chain
Huss & team. Geord Lyman Hardy, John W
Curo Transit & team Continue

West bet 17th & 20-138-28 U 8°

Begin @ stake 11.200 W. @ 11.300 stake on hill
top Then down hill: 11.500 foot of hill

Thence over level land: 12.010 set
narrow marsh N and SW @ 12.067 LV
@ 12.400 stake in N. end of small swamp

13.000 to level land: set foot of small
hill ^{13.094 Dim Road N and S} 13.100 stake on hill top

13.200 stake = limp 1/4 Cor bet 17-20
138-28 where US notes say

N to W @ 5.

Bk Oak 6° S 12° W 12 LKS = 7.92 Feet

Aspen 6 N 30° E 31 " = 20.46 "

We do not look as they are gone.

from 13.100 down slope @ 13.450 foot
of slope Thence over level land. (alders)

14.700 set of fern marsh NW and SW. 14.800
stake in water hole. 14.950 LV marsh NE-SE

15.708 W. Cross "Scott" road N + S. (there is
another Scott road about 1/2 mile West)

@ 15.800 set stake + quit for night. I stay
with Huss Harold with Hardy, John W Curo

Jan 1-1918. Tuesday

At 15.840 West look for cor
17-18-19-20-138-28 where
USnals call for.

W.P. 12° S 20° E 112 Lks = 73.92 Ft

Tam 4 S 42° W 29 " = 19.14 "

" 7 N 62° W 28 " = 18.48 "

At 15.840 West I run a
compass line North @ 8° var being
90° to transit line. Run about 300
feet to the meadow but find none
of the bearings. Eat dinner on meadow
P.M.

Harold Cus runs transit. Huss &
Lyman Hardy Cut. Continue half
a mile West. I and Geo Hardy
take Huss team and drive to Chor
Shouer & Leon Shouer's to see Leon
as he claims to have sown one ald
B.T. Leon is @ Pine River and we
drive back too late to catch the crew
who walked home. Queen day
Break hung full of crystal snow
Foggy and dark all day. Stay two
hours @ Bankson's neighbor. Get
home 8-PM. Wrote Alma a love
letter this morning. John W Cus

Working For Timothy Trup 138-28-Road Surveys

Dec 1917

Jan 1918

| | SUN 30 | 31 | 1 | 2 | 3 | 4 | 5 | SUM | > |
|---------------------------|-----------|----|---|---|-----|---|---|-----|---|
| John W. Curo Asst Engr | 0 | 1 | 1 | 1 | 1 | 1 | 1 | 0 | 1 |
| Harold J. Curo | 0 | 1 | 1 | 1 | 1/2 | 1 | 1 | 0 | 1 |
| Geo Hardy | 0 | 1 | 1 | 1 | 1/2 | 1 | 1 | 0 | 0 |
| Team | 0 | 0 | 0 | 0 | 0 | 2 | 0 | 0 | 0 |
| Ed N. Huss | 0 | 1 | 1 | 1 | 1/2 | 0 | 1 | 0 | 0 |
| Team | 0 | 2 | 2 | 0 | 2 | 2 | 2 | 0 | 0 |
| Lyman Hardy | 0 | 1 | 1 | 1 | 1/2 | 1 | 1 | 0 | 1 |
| FW Houston | 0 | 0 | 0 | 0 | 0 | 1 | 0 | 0 | 0 |
| Ocean Pelican | | | | | | | 1 | 0 | 0 |

Board Sheet Mrs Hardy

| | | | | | | | |
|----------------|--------|-------|-------|-------|-------|-------|-------|
| John W. Curo | 3 | 0 | 0 | 0 | 0 | 5 | 0 |
| Harold J. Curo | X X SL | DB SL | DB SL | DB SL | DB SL | DB SL | DB SL |

Board Sheet Mrs Huss

| | | | | | | | |
|----------------|--------|-------|-------|-------|-------|-------|-------|
| John W. Curo | X X SL | DB SL | DB SL | DB SL | DB SL | DB SL | DB SL |
| Harold J. Curo | 0 | 0 | 0 | 0 | 0 | 0 | 0 |

See pg 149 and 153

(34)

$= 7. + 11 = 18 @ \$5 = \90
 $= 6\frac{1}{2} @ \$2.50 = \16.25
 $= 5\frac{1}{2} + 2 = 7\frac{1}{2} @ \$2.50 = \$18.75$
 $= 2. + \frac{1}{16} = \$18$
 $= 4\frac{1}{2} + 10 = 14\frac{1}{2} @ \$2.50 = \$36.$
 $= \$8 + \$4 = \$12.$
 $= 6\frac{1}{2} + 11 = 17\frac{1}{2} @ \$2.50 = \$43.75$
 $= 1 @ \$2.50$
 $= 1 @ \$2.50$

131

See Pg 149 and

Jan 2nd 1918 WednesdayHess and Glenn Hardy & son Curro & son
Continue WestWest But 18-19-138-28 ^{v80}

Stakes set every 200 feet with transit
 @ 16.100 enter low land - alders. 16.400
 stake in Nnd & Snd boy road between two
 meadows. 16.700 L^v alders Enter Prairie.
 17.290 enter S. end of open meadow. @ 17.400
 stake 75 ft N. of S. end of meadow. 17.610 L^v
 N^{ts}. 18.900 W. int N. end of meadow Nnd
 SE 19.000 L^v same Nnd & S.

18.480 W. at 1/4 Cor bet Sec
 18nd & 19-138-28 (US notes say (N.W. @ 6)

W Birch 8" N 13° E 13 L^{ks} = 8.58 FT

Aspen 14. S 35° W 19 " = 12.54 "

We do not look for these.

At 20.595 W ald 8" pop stump blazed
 End & W. sets North 3. feet @ 20.617 W
 intersect Donner ald Nnd & Snd transit line
 5 ft North of a tall hut where the cut
 out line coming from the West hits
 this line at 21.038 W Donner ald Cor
 stake sets South 74.00 feet. Find no
 ald BTs and quit for night. M.N.
 "Nat" Anderson and Glenn Glover was
 there. Bright warm day. John W. Curro

Timothy Twp
Crow Wing Co MinnJan 3rd 1918 Thurs

At the cor to 13-18-19-24, 138-28-29

US nalis call for

WP 20" N 52° E 20 Lks = 13.20 Feet

Fir 11" S 32° E 7 " = 4.62 "

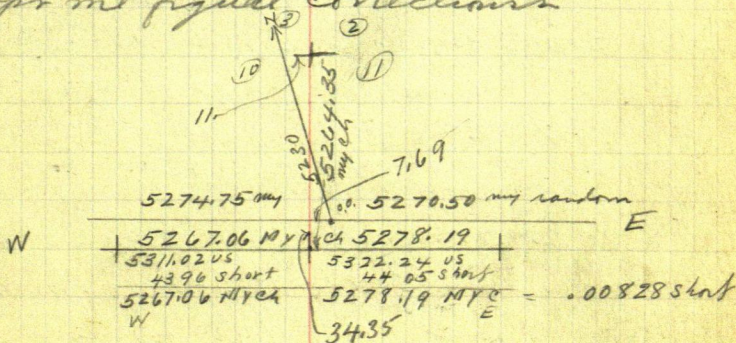
WP 14" S 78° W 36 " = 23.76 "

Maple 8" N 32½° W 31 " = 20.46 "

we could not find these BTS.

yesterday but Glover said "Donner"
found one old WP, BT. Glover also said
he never saw the BT stump @ cor to 17-18-
19-20-138-28. We are compelled to run the
town line

Storms all AM. Huss and I drive
to Hardy's but as it continues to storm
we drive back to Huss' house - put in
the team Harold comes over and
helps me figure corrections



I sent almost a "long letter" on the stage this morning

Jan 3-1918 Thurs

Corrections

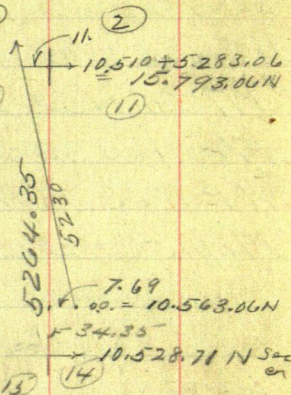
Bet 10 and 11-138-28

O.O. is 10563.06 N. and (10)

goes 34.35 S. to 10.528.70 N

Then West 7.69 To line cor to

Sec 10-11-14-15-138-28

Correction = .00355 E for
each foot N minus 7.69 W.

Stk Mnd "5400 N" is 154.35 N. of Sec cor 7.69 E - 7.69 = 7.14 W
 " " 5600 N is 354.35 N - 4 goes E 1.26 - 7.69 = 6.43 W
 " " 5800 N " 554.35 N. goes E 1.97 - 7.69 = 5.72 W
 " " 6000 N is 754.35 N " E 2.68 - 7.69 = 5.01 W
 " " 6200 N is 954.35 N " E 3.39 - 7.69 = 4.30 W
 " " 6400 N is 1154.35 N " E 4.10 - 7.69 = 3.59

S 1/4

" " 6561.73 is 1316.09 N of sec cor and
 goes E 4.67 minus 7.69 = 3.02 West
 To South 1/4 cor bet Secs 10-11-138-28

" " 6600 N is 1354.35 N. goes E 4.81 - 7.69 = 2.88 W
 " " 6800 N " 1554.35 N " E 5.52 - 7.69 = 2.17 W
 " " 7000 N " 1754.35 N " E 6.23 - 7.69 = 1.46 W
 " " 7200 N is 1954.35 N " E 6.94 - 7.69 = 0.75 W
 " " 7400 N is 2154.35 N " E 7.65 - 7.69 = 0.04 W
 " " 7600 N is 2354.35 N " E 8.36 - 7.69 = 0.67 E
 " " 7800 N is 2554.35 N " E 9.07 - 7.69 = 1.38 E

✓ " " 7877.82 is 2632.18 N of Sec cor and
 goes E 9.34 - 7.69 = 1.65 E To
 1/4 cor bet 10 and 11-138-28

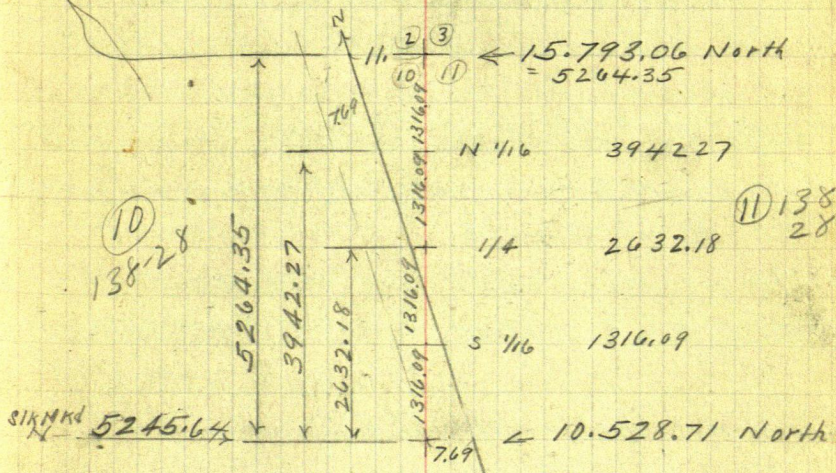
" " 8000 N is 2754.35 N. goes E 9.78 - 7.69 = 2.09 E
 " " 8200 N " 2954.35 N " E 10.49 - 7.69 = 2.80 E
 " " 8400 N " 3154.35 N " E 11.20 - 7.69 = 3.51 E
 " " 8600 N " 3354.35 N " E 11.91 - 7.69 = 4.22 E
 " " 8800 N " 3554.35 N " E 12.62 - 7.69 = 4.93 E
 " " 9000 N " 3754.35 N " E 13.33 - 7.69 = 5.64 E
 " " 9200 N " 3954.35 N " E 14.04 - 7.69 = 6.35 E

John W. Curo

Stk Mnd, 9193.91 N. is 3948.27 N. of Sec cor and
goes East 14.02 - 7.69 = 6.33 ft E to
N 1/4 Bt Secs 10th 11-138-28

N/1/16

| | | | | | |
|----------------------------------|---|---------|---------------|--------|--------------------------|
| " | " | 9400 N | is 41 54.35 N | goes E | 14.75 - 7.69 = 7.06 E |
| " | " | 9600 " | " 43 54.35 " | " | E 15.46 - 7.69 = 7.77 E |
| " | " | 9800 " | " 45 54.35 " | " | E 16.17 - 7.69 = 8.48 E |
| " | " | 10000 " | " 47 54.35 " | " | E 16.88 - 7.69 = 9.19 E |
| " | " | 10200 " | " 49 54.35 " | " | E 17.59 - 7.69 = 9.90 E |
| " | " | 10400 " | " 51 54.35 " | " | E 18.30 - 7.69 = 10.61 E |
| " | " | 10510 " | " 52 44.35 " | " | E 18.69 - 7.69 = 11.00 E |
| To out of seers 2-3-10-11 138-28 | | | | | |



5274.75 Random Ch
 5270.50 Random Ch
 5271.35
 5311.02 US = 8^{th}
 43.96 short =
 5267.06 My Ch
 5322.24 US = 10
 44.05 short =
 5278.19 My Ch
 5278.57
 10633.26 US Ch = Van Sag Line
 10545.25 My Ch $\text{V} 7^{\circ} 30'$
 $= 88.01$ short = $.00828$ short
 John W Carr

Jan 3-1918 contd
PM

Note: See P. 147, Book 5.

Lymannd & Huss set up Harrison's old "HP" stake near E 1/4 bet 27-34-138-28. back right 3/4 mile West along graded road and cut line East thru brush. They also cut some line South bet 34-35-138-28

Geo Hardy - Harold Curond & I find the old SE 1/4 B.T. @ Cor 1: 27-28-33-34-138-28 and set temp cor in line with Hardy's NTS fence which appears to be 100' far West from temp cor. Fencil post bears N. 32.20° @ Ch. E. on road 100' ch @ 1300 E set two stakes @ about 1315.50 E Huss fence runs S. @ 2600 E set two sticks @ 2640 E. We are in line with E half of Hardy's house and W. half of his barn.

@ 2766.50 E. Hardy's fence runs North. We do not find the BTS @ 1/4 Cor. @ 3860.50 E old "HP" stake @ 3900 set stake about 4 P.M. Geo Hardy goes home to make hats. Haroldnd & I figure corrections till dark. & more. Harold gets dinner with Mrs. Huss. Ramsey telephones that Alma was in P.R. since yesterday or day before with Mrs. Peterson. Stage brings me 2 shirts. John comes

Range Line

(40)

138-28

Trinity Twp

137

Jan 4-1918 Friday

Huss lays off and hauls hay with Hardy's team. Geo Hardy drives Huss's team on the survey. Lyman Hardy of Ferdinand ("Ferdie") W. Houston of Harold J Curo assists me as transitman. We drive to SW Cor Sec 7.

138-28 Lv team and walk a mile North along Donners old transit line to SW Cor Sec 6- 138-28 where Donner has set a stake marked "True Sec Co" U.S. notes call for "Y" 138-28

WP12"N61°E38 LKS = 25.08 FT

WP22"S2½°E38 " = 25.08 "

WP15"S88°W60 " = 39.60 "

Y.B. 13N11°W28 " = 18.48

I find some old burned pine stumps but they do not check for course and distance with Donners's stake and I am very much in doubt as to the correctness of Donners establishment of this corner. He claims to have found the "NE" B.T. plainly marked but I doubt it. See Donners Notes on Page 6. of this Book.

I set over Donners stake-sight
John W. Curo

138 Jan 4-1918 contd

(41)

138-28

Timothy Tarp

South along Donner and Transit line
var reads about $8^{\circ}E$. I then turn
litescope $2^{\circ}20'$ Right and cut a
new line South on a course that
ought to hit Donner stake 20718.44
feet South and 844.90 ft West.

See Donner's Diagram on Page 15. this book

I say nothing to any of the crew
except Geo Hardy. Harald and I call him
back - show him Donner stake and tell
him it is "doublefall". However we
decide to hammer this line South
just as we have started setting stakes
every 200 feet but not all are set with
transit. P.B. chain

South Bet 7th 12-138-28-29 $5^{\circ}40'$
@ 1400 stake set with transit: @ 2640
look for $\frac{1}{4}$ Cor bet Sec 7th 12- West side
of 138-28 US notes say "x"

W. Bn $4N 78^{\circ}E 20$ LKS

Y P $8N 25W 16$ "

We search thoroughly (Hardy and I)
but they are positively gone. Continue

South @ 2694. enter open meadow
E & W @ 2980 Lvs same E & W 3658 Hub
on hill top. 4757 S. Hub: @ about
Jahn W. Curo

Jan 4-1918 cont'd

Trinalthy Twp

4887 cross my old picket line coming a mile from the West (cut by Fordyce and Roy Hardy) about 5559 feet East of the Sec Co @ SW Co sec 12-138-29

We ate our lunch about 2-30 P.M.

Mr Mat Anderson and Mr Bankson came up while we were eating. Geo Hardy balled them out for hauling the hay he forbid them to haul. We Quit at 5-10 P.M.

and got home about 7 P.M. Hardy stay's to supper with I and Mrs Huss.

I walk to P.O. Lv @ 7.57 Return @ 8.29 P.M. No letters from Alma.

I go home with Hardy - telephone C.D. Bacon about wood contract Pay Hardy 45¢ for telephone We then call up Claud Mitchell and Oscar Peterson to get them to help us on survey but they will not promise to come. Houston has to lay off tomorrow. Work on notes till 11 P.M.

Note: Hardy was to drive his team today but Huss loaded team with Hardy to get a load of hay for Huss so the team has gone to Hardy

John W. Cune

Timothy Twp
Crow Wing Co Minn.

Jan 5-1918 Sat

Huss and learn since John W Curo
Harald J Curo - Oscar Peterson - Geo and
Lyman Peterson to work

Harald J Curo runs Gunley Transit
and from here South stakes are set
with transit, every 200 feet.

Rego stake 4800 South @ 4900 S
enter marsh E and SW

4950 Corn Winder road E & W in
Marsh. Run to Roy Hardy's in Sec 11
Town West. @ 5000 LV mark NE and
SW. At about South end

pass between two new 3" poplar
BTS. set by Frank H Donner in his survey
of NW 1914 but this corner is probably
not right

At this pt. limp on 7-12-13-18-¹³⁸⁻28-29 (X)

Sproce 81X66°E 12 LKS = 7.92 Feet

Aspen 125 89 E 12 " = 7.92 "

Tam 125 64 W 8 " = 5.28 "

Aspen 15X11°W 16 " = 10.56 "

Continue South bet 13-18-138-28-29 ^{on about} 5°40'

5498.80 Hub 6400 stake set with transit
6480 enter big open lawn swp E and W
good grass Boddy burned upland wet
John W Curo

Jan 5-1918 contd

(44)

138-28-29

Timothy Twp

141

TOWN Line

@ 7582.20 S. Hub: 7615 S. Cross wagon
road E and SW, run to see it in
town West: 7650 int mark: 7850 LV

At 7920 F + S. = $\frac{1}{4}$ But 13th & 18th
U.S. Shalis say @ Aspen 10 N 56 E 15 = 9.90 Ft
W. Birch 7 N 70 W 17 = 11.22 feet

Do not look for them as they are gone

@ 8233.10 no set hub Chain to 8400
S. and cut almost bal of line &
to see Co. and quit @ 5:10 P.M.

Herald J. Curo & crew run the above
alone while Geo Hardy and I
found an old blozed WP slab grown over
Chop out the spot and run about
 $\frac{3}{4}$ mile North and found old O.S.
Co. Donner failed to find. at

1-6-7-12-138-28-29 See Pg 137.

We find all three old Pine stumps well
marked. the Birch is gone

This line corner will be six or eight
hundred feet North-West of the one estab-
lished by Donner

I decide to hammer our original
line South from Donner stake as we
have marked it and correct back
Hardy & Curo then walk two
John W. Curo

142

Jan 5-1918 Cont'd

(45)

138-28-29

Trimathy

miles South set compass over corner set by Horner @ SW Cor 18-138-28 run a picket line a few hundred feet North @ 5° 40' 0 and hit the line coming from the North almost on the end. We will see later.

At Home @ 6-40 To Hardy's Mrs Hardy says Alma called me up at 6-PM and said for me to be there at 7-PM as she would call me again then. I wait till 7-30 eat supper with Hardy then try to find where Alma's call came from.

I call Theodore Peterson and he says Alma is not there and that she was at his place at 3-PM on her way to Pine River. She told his father she was going to "take the train North". Baby Reed had to walk to Pine River - Very cold day.

Alma calls me at 8 PM and says she left because she "could not stand the kids". When I ask her where she is she refuses to tell me - then says she is at Peterson's. Fortunately I know that is a damn lie and tell her I have just been

Jan 5-1918 contd (46) 138-28 143
Trinity Turp

taking L. Peterson. Then he tongue
evidently slips and lets the cat out
that she is at Leonard Emery's & of
Mildred. "Came up on P.M. train and
rode out with Carrie". Evidently
that Merle had gone back to school.

I call her out. Get a team from
Geo Hardy-Harald and I drive in
on Pine River 10 P.M. Let Harald
off at Blackburns corner and he
walks home to see about Ilo
and Harald. I drive to Emery's
at about 11 P.M. and find a party of
young folks. Alma sleeps with
Merle - I sleep with Lennis.

I wanted to work tomorrow but
cannot do so now. Find warm stall at
Emery's for team. Buy my own sheep
oats 4 Bundles or grain from Hardy's.
Get to sleep at 2 post midnight.
Pd Hardy 45¢ tel call.

John W. Cline

Jan 6-1918. Sunday

I want Alma to go board where I work with Mr & Mrs J N Harr - she wishes and wants to "stay here" Mrs Emory says she "cannot stay" I cannot budge her and drive home to the farm

Eat dinner. Its 2nd Gerald says there was no quinel at all Alma acted queerly - when she got them up stairs he took Reed went out the back door placed a cloth so as to hold the door noiselessly and walked first North then West thru the deep snow then circled around & pulled poor little Reed along in the trackless deep snow a foot or more deep (2 ft some places) and finally disappeared in the woods toward Peterson's S.E. Their attention was called to Alma by the pup dog's bark - were sorry for Reed but afraid to interfere.

As kids are O.K. I walk to Blockburn call up Emory's get Alma tell her I am ready to go to Harr and will drive around & get her if she

John W. Cunn

Jan 6-1918 Cont'd

Timothy Twp

coars to go - she says "yes" Harold & I
take blankets drive to Emery's. pick up
Alma & Reed & took to Pine River - had a
robe from Vern Hardy stop at Ackermann's
and warm - then on thru to Huss without
stopping - Got in very late & cold
Harold & Huss take the team back to
Hardy's Alma, Reed & I stay with
Huss Harold with Hardy

I tried to get Hardy before leaving
Emery's Pd 25¢ emergency call but
no get um. Blackburn did not charge
me for call but I gave him 50¢ any
way for old favors delivering telephones.

Alma went and stayed with Clate
Reed two years ago near Decorah Iowa

Jun 7-1918

A.M. Hardy or Hurr do not work.

Lyman Haeald and I go to cor.

27-28-33-34 - 138.28 where US notes say

Dry Pine 7 N 22 E 57. LKs = 37.66 Feet

" " 7 N 20 W 45 " = 29.70 "

Hard Pine 8 S 15 E 251 " = 165.66 "

We find the stump of the SE
Pine plainly marked from which I set
the cor @ 8° Var about. because the
graded road running East runs on
7° and the road running West @ 9°
Difference or Mean Var = 8°

drive 20.4 spike in frozen graded
ETW road a little North of center
New BTs Uij

Pine stump 6 S 24° 47' W 79.95 Feet

" " 10 S 63° 24' E 88.50 "

Jock Pine tree 6 N 18° 22' W 96.40 "

Tel Pole 6 N 60° 54' E 50.90 "

Old BT 8 S 15° 00' E 165.66 "

To head of 20.4 spike in flat spot
at base. 8° Var

Hardy's fence cor NW 31.20 ft and
the cor in frozen ground is set for
limp cor a few days ago set W 15° S 51.00 away
John W. Burt

Jan 7-1918 cont'd

(50)

138-28
Timothy

147

Place fall back shot at line on in snow mound - Check chain East bet 28-33 along graded road. Checking only the whole chain. We will move points previously chained on this line 5 feet East 1300.0K. 2600.0K. 3900.0K but must go E 5-ft on preliminary. I quit at 11 AM. & write notes. Harold & Lynn cut bal of line East bet 28-33. 138-28 Harold. Run line out & cuts
P.M.

Town Board meet at Char Mitchell's Geo Hardy & team take Hurr. Fordyce - Killen & I over. I work hard all P.M. on bills

I put in everything clean up to Tuesday morning Before Breakfast
John W Curo \$90.00 Harold J Curo @ 250
\$16.25. Mrs Jannie Hurr for our board
Harold .35 x J W Curo \$14.20 = \$15.05

Mrs Carrie Hardy J W Curo \$14.00
H J Curo \$12.25 Total \$26.25 Some of these meals Harold & I pd for in town or at home for which we should get 1/3

From Mrs Hardy \$3.15 Mrs Hurr \$2.45

See page 149. This book John W Curo
and 127-131

See pg 136-151 Book G.

Jan 8-1918 Tuesday

Geo Hardy & learn takes Ben Fordyce
to Pine River for Trimathy Twp.

Fordyce is to appear before the Co Board
at Brainerd to get money for judicial
road vrs this 138-29 and to have
Twp Cor set at NE cor 138-28 and
138-29.

I pay Claud Mitchell
25^x for hauling my pigs from Pine River
viz: two shirts & tobacco; then I go to
Pine River with Hardy. Alma & Reed
stay with Mrs Huss.

I take Harold's check $8\frac{1}{2}^{25}$ and my own
 $\$90 = \106.25 I pay $\$25$ Int. $45 = \$25.45$
note at Farmers State Bank PR. I still
owe them $\$50$. due Feb 22-1918

I deposit $\$70$. making my bal $\$77.81$
then I pay by check as follows

P. Lillistrom on Phonograph $\$6$.

C. Ineson $\$24.32$ in full to date

H. E. Andrew $\$3$. in full Two knives for Alma

I get dinner with Cornsett 35^x
pay Art Shill 50^x fixing Harold's rubber
pay $\$1$ for Harold's Rheumatism dope
Candy 50^x I call up C. D. Boon

regarding my bid @ $\$5.25$ for 200 cels wood
at Walker
John W. Cress

Jan 8-1918 cont'd "All bids rejected"

I call up Hubbard Co and Crow Wing Co Board to tell them I am ready to make surveys "none wanted"

Get back home late with Hardy
Alma look baby to Hardy's tight
whooping cough from "Gladys" contrary
to my express wishes and orders

Harold J Curo runs transit
in my place for me J N Hoss and team
take Claud Mitchell - Lyman Hardy &c
to work and they cut 1500 feet of line
South on range line bet 138-28-29

South Bet 13-18 & 15-40

@ 9564.50 s. Hub @ 10.286. about cor.
E & W old transit line @ 10.359.60

8. New Sec cor stake set by Stonner
sets West 1.90 feet See Page 1: To 24 Down

Continues South Bet 19-24

10.830.10 s Hub. Claud Mitchell
says he will not work "that hood"
and quits promises to send Clarence
Anderson in the morning

John W Curo

Jan 9-1918 Wed

Nitchel sends no one. Hurstnd learn
take Haroldnd Lyman out and they beg @
Hub 10. 830. 105 and continue Range line
South

I figure corrections till 11 a.m.
while Geo Hardy makes stakes

Hardy Comes to Husses @ 11-0.m.
goes into Almar bed room where she is
sleeping pulls her out with his cold
hands and she comes out rubbing her
eyes with a grin - plants herself in a
chair in front of him and giggles and
he giggles she says "you mean thing"
how how how

Hardy & I go out and continue to
chain East on line line set with
transit by Harold bet Sec 27-33 ¹³⁵/₂₈
@ 3900 stak. 4500 E. int marsh 4625 LV
4900 int creek bottom-meadow N + S.
5040 Creek 4 ft wide runs South
(front here) LV meadow NE and SE
@ 5517. 30 intersect hut and lock
set by me for the line cor to 26-27
³⁵
33-34-138-28 from old B.T.S. see Pg
Book . we get back at noon
John W. Cunn

152

55

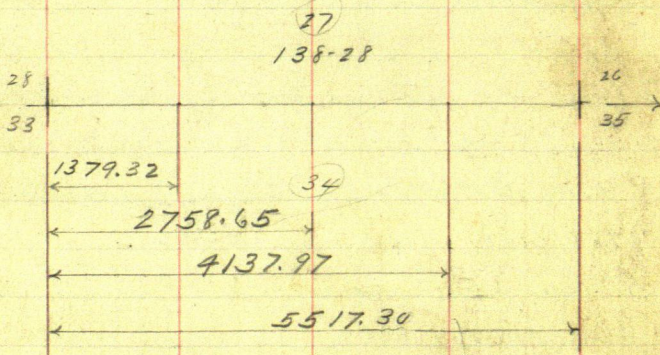
138-28-29
Trimathy Twp

Jan 9-1918 cont'd

after Hardy goes I tell Alma it
was not necessary for her to set and
giggle in the face of a strange man and
that she never laughs when I come in
and that the next time she allow
a man to "pull her leg" without showing
some kind of resentment - "the first time
you allow a man to lay his hands on
you - you will hear from me in a
substantial manner!" etc. Mrs. Han
hears me, says nothing

P.M.

I write up notes and figure.



| Working For Timothy Trip 138-28-29 Road Surveys | | | | | | | | | | | | | | | | | | | | | | Crow Wing Co. Minn. | | | |
|---|---|--------------|---|---|----|----|----|----|----|----|----|----|--------|----|--------|----|----|----|----|--------|----|---------------------|--|--|--|
| Sun | | January 1918 | | | | | | | | | | 19 | SUN 20 | 21 | 22 | 23 | 24 | 25 | 26 | SUN 27 | | | | | |
| 5 | 6 | 7 | 8 | 9 | 10 | 11 | 12 | 13 | 14 | 15 | 16 | 17 | 18 | 19 | SUN 20 | 21 | 22 | 23 | 24 | 25 | 26 | 27 | | | |
| John W. Curo | | | | | | | | | | | | | | | | | | | | | | | | | |
| Harold Curo | | | | | | | | | | | | | | | | | | | | | | | | | |
| Geo Hardy | | | | | | | | | | | | | | | | | | | | | | | | | |
| Team | | | | | | | | | | | | | | | | | | | | | | | | | |
| J N Huss | | | | | | | | | | | | | | | | | | | | | | | | | |
| Team | | | | | | | | | | | | | | | | | | | | | | | | | |
| Lyman Hardy | | | | | | | | | | | | | | | | | | | | | | | | | |
| Clayton Mitchell | | | | | | | | | | | | | | | | | | | | | | | | | |
| Clas W. Killin | | | | | | | | | | | | | | | | | | | | | | | | | |
| Oscar Peterson | | | | | | | | | | | | | | | | | | | | | | | | | |

56

Board Sheet Mrs Carrie Hardy

| | | | | | | | | | | | | | | | | | | | | | | | | | | | | | | | | | | | | | | | | | | | | | | | | | | | | | | | | | | | | | | | | | | | | | | | | | | | | | | | | | | | | | | | | | | | | | | | | | | | | | | | | | | | | | | | | | | | | | | | | | | | | | | | | | | | | | | | | | | | | | | | | | | | | | | | | | | | | | | | | | | | | | | | | | | | | | | | | | | | | | | | | | | | | | | | | | | | | | | | | | | | | | | | | | | | | | | | | | | | | | | | | | | | | | | | | | | | | | | | | | | | | | | | | | | | | | | | | | | | | | | | | | | | | | | | | | | | | | | | | | | | | | | | | | | | | | | | | | | | | | | | | | | | | | | | | | | | | | | | | | | | | | | | | | | | | | | | | | | | | | | | | | | | | | | | | | | | | | | | | | | | | | | | | | | | | | | | | | | | | | | | | | | | | | | | | | | | | | | | | | | | | | | | | | | | | | | | | | | | | | | | | | | | | | | | | | | | | | | | | | | | | | | | | | | | | | | | | | | | | | | | | | | | | | | | | | | | | | | | | | | | | | | | | | | | | | | | | | | | | | | | | | | | | | | | | | | | | | | | | | | | | | | | | | | | | | | | | | | | | | | | | | | | | | | | | | | | | | | | | | | | | | | | | | | | | | | | | | | | | | | | | | | | | | | | | | | | | | | | | | | | | | | | | | | | | | | | | | | | | | | | | | | | | | | | | | | | | | | | | | | | | | | | | | | | | | | | | | | | | | | | | | | | | | | | | | | | | | | | | | | | | | | | | | | | | | | | | | | | | | | | | | | | | | | | | | | | | | | | | | | | | | | | | | | | | | | | | | | | | | | | | | | | | | | | | | | | | | | | | | | | | | | | | | | | | | | | | | | | | | | | | | | | | | | | | | | | | | | | | | | | | | | | | | | | | | | | | | | | | | | | | | | | | | | | | | | | | | | | | | | | | | | | | | | | | | | | | | | | | | | | | | | | | | | | | | | | | | | | | | | | | | | | | | | | | | | | | | | | | | | | | | | | | | | | | | | | | | | | | | | | | | | | | | | | | | | | | | | | | | | | | | | | | | | | | | | | | | | | | | | | | | | | | | | | | | | | | | | | | | | | | | | | | | | | | | | | | | | | | | | | | | | | | | | | | | | | | | | | | | | | | | | | | | | | | | | | | | | | | | | | | | | | | | | | | | | | | | | | | | | | | | | | | | | | | | | | | | | | | | | | | | | | | | | | | | | | | | | | | | | | | | | | | | | | | | | | | | | | | | | | | | | | | | | | | | | | | | | | | | | | | | | | | | | | | | | | | | | | | | | | | | | | | | | | | | | | | | | | | | | | | | | | | | | | | | | | | | | | | | | | | | | | | | | | | | | | | | | | | | | | | | | | | | | | | | | | | | | | | | | | | | | | | | | | | | | | | | | | | | | | | | | | | | | | | | | | | | | | | | | | | | | | |
|----|----|----|----|----|----|----|----|----|----|----|----|----|----|----|----|----|----|----|----|----|----|----|----|----|----|----|----|----|----|----|----|----|----|----|----|----|----|----|----|----|----|----|----|----|----|----|----|----|----|----|----|----|----|----|----|----|----|----|----|----|----|----|----|----|----|----|----|----|----|----|----|----|----|----|----|----|----|----|----|----|----|----|----|----|----|----|----|----|----|----|----|----|----|----|----|----|----|----|----|----|----|----|----|----|----|----|----|----|----|----|----|----|----|----|----|----|----|----|----|----|----|----|----|----|----|----|----|----|----|----|----|----|----|----|----|----|----|----|----|----|----|----|----|----|----|----|----|----|----|----|----|----|----|----|----|----|----|----|----|----|----|----|----|----|----|----|----|----|----|----|----|----|----|----|----|----|----|----|----|----|----|----|----|----|----|----|----|----|----|----|----|----|----|----|----|----|----|----|----|----|----|----|----|----|----|----|----|----|----|----|----|----|----|----|----|----|----|----|----|----|----|----|----|----|----|----|----|----|----|----|----|----|----|----|----|----|----|----|----|----|----|----|----|----|----|----|----|----|----|----|----|----|----|----|----|----|----|----|----|----|----|----|----|----|----|----|----|----|----|----|----|----|----|----|----|----|----|----|----|----|----|----|----|----|----|----|----|----|----|----|----|----|----|----|----|----|----|----|----|----|----|----|----|----|----|----|----|----|----|----|----|----|----|----|----|----|----|----|----|----|----|----|----|----|----|----|----|----|----|----|----|----|----|----|----|----|----|----|----|----|----|----|----|----|----|----|----|----|----|----|----|----|----|----|----|----|----|----|----|----|----|----|----|----|----|----|----|----|----|----|----|----|----|----|----|----|----|----|----|----|----|----|----|----|----|----|----|----|----|----|----|----|----|----|----|----|----|----|----|----|----|----|----|----|----|----|----|----|----|----|----|----|----|----|----|----|----|----|----|----|----|----|----|----|----|----|----|----|----|----|----|----|----|----|----|----|----|----|----|----|----|----|----|----|----|----|----|----|----|----|----|----|----|----|----|----|----|----|----|----|----|----|----|----|----|----|----|----|----|----|----|----|----|----|----|----|----|----|----|----|----|----|----|----|----|----|----|----|----|----|----|----|----|----|----|----|----|----|----|----|----|----|----|----|----|----|----|----|----|----|----|----|----|----|----|----|----|----|----|----|----|----|----|----|----|----|----|----|----|----|----|----|----|----|----|----|----|----|----|----|----|----|----|----|----|----|----|----|----|----|----|----|----|----|----|----|----|----|----|----|----|----|----|----|----|----|----|----|----|----|----|----|----|----|----|----|----|----|----|----|----|----|----|----|----|----|----|----|----|----|----|----|----|----|----|----|----|----|----|----|----|----|----|----|----|----|----|----|----|----|----|----|----|----|----|----|----|----|----|----|----|----|----|----|----|----|----|----|----|----|----|----|----|----|----|----|----|----|----|----|----|----|----|----|----|----|----|----|----|----|----|----|----|----|----|----|----|----|----|----|----|----|----|----|----|----|----|----|----|----|----|----|----|----|----|----|----|----|----|----|----|----|----|----|----|----|----|----|----|----|----|----|----|----|----|----|----|----|----|----|----|----|----|----|----|----|----|----|----|----|----|----|----|----|----|----|----|----|----|----|----|----|----|----|----|----|----|----|----|----|----|----|----|----|----|----|----|----|----|----|----|----|----|----|----|----|----|----|----|----|----|----|----|----|----|----|----|----|----|----|----|----|----|----|----|----|----|----|----|----|----|----|----|----|----|----|----|----|----|----|----|----|----|----|----|----|----|----|----|----|----|----|----|----|----|----|----|----|----|----|----|----|----|----|----|----|----|----|----|----|----|----|----|----|----|----|----|----|----|----|----|----|----|----|----|----|----|----|----|----|----|----|----|----|----|----|----|----|----|----|----|----|----|----|----|----|----|----|----|----|----|----|----|----|----|----|----|----|----|----|----|----|----|----|----|----|----|----|----|----|----|----|----|----|----|----|----|----|----|----|----|----|----|----|----|----|----|----|----|----|----|----|----|----|----|----|----|----|----|----|----|----|----|----|----|----|----|----|----|----|----|----|----|----|----|----|----|----|----|----|----|----|----|----|----|----|----|----|----|----|----|----|----|----|----|----|----|----|----|----|----|----|----|----|----|----|----|----|----|----|----|----|----|----|----|----|----|----|----|----|----|----|----|----|----|----|----|----|----|----|----|----|----|----|----|----|----|----|----|----|----|----|----|----|----|----|----|----|----|----|----|----|----|----|----|----|----|----|----|----|----|----|----|----|----|----|----|----|----|----|----|----|----|----|----|----|----|----|----|----|----|----|----|----|----|----|----|----|----|----|----|----|----|----|----|----|----|----|----|----|----|----|----|----|----|----|----|----|----|----|----|----|----|----|----|----|----|----|----|----|----|----|----|----|----|----|----|----|----|----|----|----|----|----|----|----|----|----|----|----|----|----|----|----|----|----|----|----|----|----|----|----|----|----|----|----|----|----|----|----|----|----|----|----|----|----|----|----|----|----|----|----|----|----|----|----|----|----|----|----|----|----|----|----|----|----|----|----|----|----|----|----|----|----|----|----|----|----|----|----|----|----|----|----|----|----|----|----|----|----|----|----|----|----|----|----|----|----|----|----|----|----|----|----|----|----|----|----|----|----|----|----|----|----|----|----|----|----|----|----|----|----|----|----|----|----|----|----|----|----|----|----|----|----|----|----|----|----|----|----|----|----|----|----|----|----|----|----|----|----|----|----|----|----|----|----|----|----|----|----|----|----|----|----|----|----|----|----|----|----|----|----|----|----|----|----|----|----|----|----|----|----|----|----|----|----|----|----|----|----|----|----|----|----|----|----|----|----|----|----|----|----|----|----|----|----|----|----|----|----|----|----|----|----|----|----|----|----|----|----|----|----|----|----|----|----|----|
| 75 | 75 | 75 | 75 | 75 | 75 | 75 | 75 | 75 | 75 | 75 | 75 | 75 | 75 | 75 | 75 | 75 | 75 | 75 | 75 | 75 | 75 | 75 | 75 | 75 | 75 | 75 | 75 | 75 | 75 | 75 | 75 | 75 | 75 | 75 | 75 | 75 | 75 | 75 | 75 | 75 | 75 | 75 | 75 | 75 | 75 | 75 | 75 | 75 | 75 | 75 | 75 | 75 | 75 | 75 | 75 | 75 | 75 | 75 | 75 | 75 | 75 | 75 | 75 | 75 | 75 | 75 | 75 | 75 | 75 | 75 | 75 | 75 | 75 | 75 | 75 | 75 | 75 | 75 | 75 | 75 | 75 | 75 | 75 | 75 | 75 | 75 | 75 | 75 | 75 | 75 | 75 | 75 | 75 | 75 | 75 | 75 | 75 | 75 | 75 | 75 | 75 | 75 | 75 | 75 | 75 | 75 | 75 | 75 | 75 | 75 | 75 | 75 | 75 | 75 | 75 | 75 | 75 | 75 | 75 | 75 | 75 | 75 | 75 | 75 | 75 | 75 | 75 | 75 | 75 | 75 | 75 | 75 | 75 | 75 | 75 | 75 | 75 | 75 | 75 | 75 | 75 | 75 | 75 | 75 | 75 | 75 | 75 | 75 | 75 | 75 | 75 | 75 | 75 | 75 | 75 | 75 | 75 | 75 | 75 | 75 | 75 | 75 | 75 | 75 | 75 | 75 | 75 | 75 | 75 | 75 | 75 | 75 | 75 | 75 | 75 | 75 | 75 | 75 | 75 | 75 | 75 | 75 | 75 | 75 | 75 | 75 | 75 | 75 | 75 | 75 | 75 | 75 | 75 | 75 | 75 | 75 | 75 | 75 | 75 | 75 | 75 | 75 | 75 | 75 | 75 | 75 | 75 | 75 | 75 | 75 | 75 | 75 | 75 | 75 | 75 | 75 | 75 | 75 | 75 | 75 | 75 | 75 | 75 | 75 | 75 | 75 | 75 | 75 | 75 | 75 | 75 | 75 | 75 | 75 | 75 | 75 | 75 | 75 | 75 | 75 | 75 | 75 | 75 | 75 | 75 | 75 | 75 | 75 | 75 | 75 | 75 | 75 | 75 | 75 | 75 | 75 | 75 | 75 | 75 | 75 | 75 | 75 | 75 | 75 | 75 | 75 | 75 | 75 | 75 | 75 | 75 | 75 | 75 | 75 | 75 | 75 | 75 | 75 | 75 | 75 | 75 | 75 | 75 | 75 | 75 | 75 | 75 | 75 | 75 | 75 | 75 | 75 | 75 | 75 | 75 | 75 | 75 | 75 | 75 | 75 | 75 | 75 | 75 | 75 | 75 | 75 | 75 | 75 | 75 | 75 | 75 | 75 | 75 | 75 | 75 | 75 | 75 | 75 | 75 | 75 | 75 | 75 | 75 | 75 | 75 | 75 | 75 | 75 | 75 | 75 | 75 | 75 | 75 | 75 | 75 | 75 | 75 | 75 | 75 | 75 | 75 | 75 | 75 | 75 | 75 | 75 | 75 | 75 | 75 | 75 | 75 | 75 | 75 | 75 | 75 | 75 | 75 | 75 | 75 | 75 | 75 | 75 | 75 | 75 | 75 | 75 | 75 | 75 | 75 | 75 | 75 | 75 | 75 | 75 | 75 | 75 | 75 | 75 | 75 | 75 | 75 | 75 | 75 | 75 | 75 | 75 | 75 | 75 | 75 | 75 | 75 | 75 | 75 | 75 | 75 | 75 | 75 | 75 | 75 | 75 | 75 | 75 | 75 | 75 | 75 | 75 | 75 | 75 | 75 | 75 | 75 | 75 | 75 | 75 | 75 | 75 | 75 | 75 | 75 | 75 | 75 | 75 | 75 | 75 | 75 | 75 | 75 | 75 | 75 | 75 | 75 | 75 | 75 | 75 | 75 | 75 | 75 | 75 | 75 | 75 | 75 | 75 | 75 | 75 | 75 | 75 | 75 | 75 | 75 | 75 | 75 | 75 | 75 | 75 | 75 | 75 | 75 | 75 | 75 | 75 | 75 | 75 | 75 | 75 | 75 | 75 | 75 | 75 | 75 | 75 | 75 | 75 | 75 | 75 | 75 | 75 | 75 | 75 | 75 | 75 | 75 | 75 | 75 | 75 | 75 | 75 | 75 | 75 | 75 | 75 | 75 | 75 | 75 | 75 | 75 | 75 | 75 | 75 | 75 | 75 | 75 | 75 | 75 | 75 | 75 | 75 | 75 | 75 | 75 | 75 | 75 | 75 | 75 | 75 | 75 | 75 | 75 | 75 | 75 | 75 | 75 | 75 | 75 | 75 | 75 | 75 | 75 | 75 | 75 | 75 | 75 | 75 | 75 | 75 | 75 | 75 | 75 | 75 | 75 | 75 | 75 | 75 | 75 | 75 | 75 | 75 | 75 | 75 | 75 | 75 | 75 | 75 | 75 | 75 | 75 | 75 | 75 | 75 | 75 | 75 | 75 | 75 | 75 | 75 | 75 | 75 | 75 | 75 | 75 | 75 | 75 | 75 | 75 | 75 | 75 | 75 | 75 | 75 | 75 | 75 | 75 | 75 | 75 | 75 | 75 | 75 | 75 | 75 | 75 | 75 | 75 | 75 | 75 | 75 | 75 | 75 | 75 | 75 | 75 | 75 | 75 | 75 | 75 | 75 | 75 | 75 | 75 | 75 | 75 | 75 | 75 | 75 | 75 | 75 | 75 | 75 | 75 | 75 | 75 | 75 | 75 | 75 | 75 | 75 | 75 | 75 | 75 | 75 | 75 | 75 | 75 | 75 | 75 | 75 | 75 | 75 | 75 | 75 | 75 | 75 | 75 | 75 | 75 | 75 | 75 | 75 | 75 | 75 | 75 | 75 | 75 | 75 | 75 | 75 | 75 | 75 | 75 | 75 | 75 | 75 | 75 | 75 | 75 | 75 | 75 | 75 | 75 | 75 | 75 | 75 | 75 | 75 | 75 | 75 | 75 | 75 | 75 | 75 | 75 | 75 | 75 | 75 | 75 | 75 | 75 | 75 | 75 | 75 | 75 | 75 | 75 | 75 | 75 | 75 | 75 | 75 | 75 | 75 | 75 | 75 | 75 | 75 | 75 | 75 | 75 | 75 | 75 | 75 | 75 | 75 | 75 | 75 | 75 | 75 | 75 | 75 | 75 | 75 | 75 | 75 | 75 | 75 | 75 | 75 | 75 | 75 | 75 | 75 | 75 | 75 | 75 | 75 | 75 | 75 | 75 | 75 | 75 | 75 | 75 | 75 | 75 | 75 | 75 | 75 | 75 | 75 | 75 | 75 | 75 | 75 | 75 | 75 | 75 | 75 | 75 | 75 | 75 | 75 | 75 | 75 | 75 | 75 | 75 | 75 | 75 | 75 | 75 | 75 | 75 | 75 | 75 | 75 | 75 | 75 | 75 | 75 | 75 | 75 | 75 | 75 | 75 | 75 | 75 | 75 | 75 | 75 | 75 | 75 | 75 | 75 | 75 | 75 | 75 | 75 | 75 | 75 | 75 | 75 | 75 | 75 | 75 | 75 | 75 | 75 | 75 | 75 | 75 | 75 | 75 | 75 | 75 | 75 | 75 | 75 | 75 | 75 | 75 | 75 | 75 | 75 | 75 | 75 | 75 | 75 | 75 | 75 | 75 | 75 | 75 | 75 | 75 | 75 | 75 | 75 | 75 | 75 | 75 | 75 | 75 | 75 | 75 | 75 | 75 | 75 | 75 | 75 | 75 | 75 | 75 | 75 | 75 | 75 | 75 | 75 | 75 | 75 | 75 | 75 | 75 | 75 | 75 | 75 | 75 | 75 | 75 | 75 | 75 | 75 | 75 | 75 | 75 | 75 | 75 | 75 | 75 | 75 | 75 | 75 | 75 | 75 | 75 | 75 | 75 | 75 | 75 | 75 | 75 | 75 | 75 | 75 | 75 | 75 | 75 | 75 | 75 | 75 | 75 | 75 | 75 | 75 | 75 | 75 | 75 | 75 | 75 | 75 | 75 | 75 | 75 | 75 | 75 | 75 | 75 | 75 | 75 | 75 | 75 | 75 | 75 | 75 | 75 | 75 | 75 | 75 | 75 | 75 | 75 | 75 | 75 | 75 | 75 | 75 | 75 | 75 | 75 | 75 | 75 | 75 | 75 | 75 | 75 | 75 | 75 | 75 | 75 | 75 | 75 | 75 | 75 | 75 | 75 | 75 | 75 | 75 | 75 | 75 | 75 | 75 | 75 | 75 | 75 | 75 | 75 | 75 | 75 | 75 | 75 | 75 | 75 | 75 | 75 | 75 | 75 | 75 | 75 | 75 | 75 | 75 | 75 | 75 | 75 | 75 | 75 | 75 | 75 | 75 | 75 | 75 | 75 | 75 | 75 | 75 | 75 | 75 | 75 | 75 | 75 | 75 | 75 | 75 | 75 | 75 | 75 | 75 | 75 | 75 | 75 | 75 | 75 | 75 | 75 | 75 | 75 | 75 | 75 | 75 | 75 | 75 | 75 | 75 | 75 | 75 | 75 | 75 | 75 | 75 | 75 | 75 | 75 | 75 | 75 | 75 | 75 | 75 | 75 | 75 | 75 | 75 | 75 | 75 | 75 | 75 | 75 | 75 | 75 | 75 | 75 | 75 | 75 | 75 | 75 | 75 | 75 | 75 | 75 | 75 | 75 | 75 | 75 | 75 | 75 | 75 | 75 | 75 | 75 | 75 | 75 | 75 | 75 | 75 | 75 | 75 | 75 | 75 | 75 | 75 | 75 | 75 | 75 | 75 | 75 | 75 | 75 | 75 | 75 | 75 | 75 | 75 | 75 | 75 | 75 | 75 | 75 | 75 | 75 | 75 | 75 | 75 | 75 | 75 | 75 | 75 | 75 | 75 | 75 | 75 | 75 | 75 | 75 | 75 | 75 | 75 | 75 | 75 | 75 | 75 | 75 | 75 | 75 | 75 | 75 | 75 | 75 | 75 | 75 | 75 | 75 | 75 | 75 | 75 | 75 | 75 | 75 | 75 | 75 | 75 | 75 | 75 | 75 | 75 | 75 | 75 | 75 | 75 | 75 | 75 | 75 | 75 | 75 | 75 | 75 | 75 | 75 | 75 | 75 | 75 | 75 | 75 | 75 | 75 | 75 | 75 | 75 | 75 | 75 | 75 | 75 | 75 | 75 | 75 | 75 | 75 | 75 | 75 | 75 | 75 | 75 | 75 | 75 | 75 | 75 | 75 | 75 | 75 | 75 | 75 | 75 | 75 | 75 | 75 | 75 | 75 | 75 | 75 | 75 | 75 | 75 | 75 | 75 | 75 | 75 | 75 | 75 | 75 | 75 | 75 | 75 | 75 | 75 | 75 | 75 | 75 | 75 | 75 | 75 | 75 | 75 | 75 | 75 | 75 | 75 | 75 | 75 | 75 | 75 | 75 | 75 | 75 | 75 | 75 | 75 | 75 | 75 | 75 | 75 | 75 | 75 | 75 | 75 | 75 | 75 | 75 | 75 | 75 | 75 | 75 | 75 | 75 | 75 | 75 | 75 | 75 | 75 | 75 | 75 | 75 | 75 | 75 | 75 | 75 | 75 | 75 | 75 | 75 | 75 | 75 | 75 | 75 | 75 | 75 | 75 | 75 | 75 | 75 | 75 | 75 | 75 | 75 | 75 | 75 | 75 | 75 | 75 | 75 | 75 | 75 | 75 |
|----|----|----|----|----|----|----|----|----|----|----|----|----|----|----|----|----|----|----|----|----|----|----|----|----|----|----|----|----|----|----|----|----|----|----|----|----|----|----|----|----|----|----|----|----|----|----|----|----|----|----|----|----|----|----|----|----|----|----|----|----|----|----|----|----|----|----|----|----|----|----|----|----|----|----|----|----|----|----|----|----|----|----|----|----|----|----|----|----|----|----|----|----|----|----|----|----|----|----|----|----|----|----|----|----|----|----|----|----|----|----|----|----|----|----|----|----|----|----|----|----|----|----|----|----|----|----|----|----|----|----|----|----|----|----|----|----|----|----|----|----|----|----|----|----|----|----|----|----|----|----|----|----|----|----|----|----|----|----|----|----|----|----|----|----|----|----|----|----|----|----|----|----|----|----|----|----|----|----|----|----|----|----|----|----|----|----|----|----|----|----|----|----|----|----|----|----|----|----|----|----|----|----|----|----|----|----|----|----|----|----|----|----|----|----|----|----|----|----|----|----|----|----|----|----|----|----|----|----|----|----|----|----|----|----|----|----|----|----|----|----|----|----|----|----|----|----|----|----|----|----|----|----|----|----|----|----|----|----|----|----|----|----|----|----|----|----|----|----|----|----|----|----|----|----|----|----|----|----|----|----|----|----|----|----|----|----|----|----|----|----|----|----|----|----|----|----|----|----|----|----|----|----|----|----|----|----|----|----|----|----|----|----|----|----|----|----|----|----|----|----|----|----|----|----|----|----|----|----|----|----|----|----|----|----|----|----|----|----|----|----|----|----|----|----|----|----|----|----|----|----|----|----|----|----|----|----|----|----|----|----|----|----|----|----|----|----|----|----|----|----|----|----|----|----|----|----|----|----|----|----|----|----|----|----|----|----|----|----|----|----|----|----|----|----|----|----|----|----|----|----|----|----|----|----|----|----|----|----|----|----|----|----|----|----|----|----|----|----|----|----|----|----|----|----|----|----|----|----|----|----|----|----|----|----|----|----|----|----|----|----|----|----|----|----|----|----|----|----|----|----|----|----|----|----|----|----|----|----|----|----|----|----|----|----|----|----|----|----|----|----|----|----|----|----|----|----|----|----|----|----|----|----|----|----|----|----|----|----|----|----|----|----|----|----|----|----|----|----|----|----|----|----|----|----|----|----|----|----|----|----|----|----|----|----|----|----|----|----|----|----|----|----|----|----|----|----|----|----|----|----|----|----|----|----|----|----|----|----|----|----|----|----|----|----|----|----|----|----|----|----|----|----|----|----|----|----|----|----|----|----|----|----|----|----|----|----|----|----|----|----|----|----|----|----|----|----|----|----|----|----|----|----|----|----|----|----|----|----|----|----|----|----|----|----|----|----|----|----|----|----|----|----|----|----|----|----|----|----|----|----|----|----|----|----|----|----|----|----|----|----|----|----|----|----|----|----|----|----|----|----|----|----|----|----|----|----|----|----|----|----|----|----|----|----|----|----|----|----|----|----|----|----|----|----|----|----|----|----|----|----|----|----|----|----|----|----|----|----|----|----|----|----|----|----|----|----|----|----|----|----|----|----|----|----|----|----|----|----|----|----|----|----|----|----|----|----|----|----|----|----|----|----|----|----|----|----|----|----|----|----|----|----|----|----|----|----|----|----|----|----|----|----|----|----|----|----|----|----|----|----|----|----|----|----|----|----|----|----|----|----|----|----|----|----|----|----|----|----|----|----|----|----|----|----|----|----|----|----|----|----|----|----|----|----|----|----|----|----|----|----|----|----|----|----|----|----|----|----|----|----|----|----|----|----|----|----|----|----|----|----|----|----|----|----|----|----|----|----|----|----|----|----|----|----|----|----|----|----|----|----|----|----|----|----|----|----|----|----|----|----|----|----|----|----|----|----|----|----|----|----|----|----|----|----|----|----|----|----|----|----|----|----|----|----|----|----|----|----|----|----|----|----|----|----|----|----|----|----|----|----|----|----|----|----|----|----|----|----|----|----|----|----|----|----|----|----|----|----|----|----|----|----|----|----|----|----|----|----|----|----|----|----|----|----|----|----|----|----|----|----|----|----|----|----|----|----|----|----|----|----|----|----|----|----|----|----|----|----|----|----|----|----|----|----|----|----|----|----|----|----|----|----|----|----|----|----|----|----|----|----|----|----|----|----|----|----|----|----|----|----|----|----|----|----|----|----|----|----|----|----|----|----|----|----|----|----|----|----|----|----|----|----|----|----|----|----|----|----|----|----|----|----|----|----|----|----|----|----|----|----|----|----|----|----|----|----|----|----|----|----|----|----|----|----|----|----|----|----|----|----|----|----|----|----|----|----|----|----|----|----|----|----|----|----|----|----|----|----|----|----|----|----|----|----|----|----|----|----|----|----|----|----|----|----|----|----|----|----|----|----|----|----|----|----|----|----|----|----|----|----|----|----|----|----|----|----|----|----|----|----|----|----|----|----|----|----|----|----|----|----|----|----|----|----|----|----|----|----|----|----|----|----|----|----|----|----|----|----|----|----|----|----|----|----|----|----|----|----|----|----|----|----|----|----|----|----|----|----|----|----|----|----|----|----|----|----|----|----|----|----|----|----|----|----|----|----|----|----|----|----|----|----|----|----|----|----|----|----|----|----|----|----|----|----|----|----|----|----|----|----|----|----|----|----|----|----|----|----|----|----|----|----|----|----|----|----|----|----|----|----|----|----|----|----|----|----|----|----|----|----|----|----|----|----|----|----|----|----|----|----|----|----|----|----|----|----|----|----|----|----|----|----|----|----|----|----|----|----|----|----|----|----|----|----|----|----|----|----|----|----|----|----|----|----|----|----|----|----|----|----|----|----|----|----|----|----|----|----|----|----|----|----|----|----|----|----|----|----|----|----|----|----|----|----|----|----|----|----|----|----|----|----|----|----|----|----|----|----|----|----|----|----|----|----|----|----|----|

Board Sheet Mrs Jannie Huss

| | | | | | | | | | | | | | | | | | | | | | | | | | | | | | | | | | | | | | | | | | | | | | | | | | | | | | | | | | | | | | | | | | | | | | | | | | | | | | | | | | | | | | | | | | | | | | | | | | | | | | | | | | | | | | | | | | | | | | | | | | | | | | | | | | | | | | | | | | | | | | | | | | | | | | | | | | | | | | | | | | | | | | | | | | | | | | | | | | | | | | | | | | | | | | | | | | | | | | | | | | | | | | | | | | | | | | | | | | | | | | | | | | | | | | | | | | | | | | | | | | | | | | | | | | | | | | | | | | | | | | | | | | | | | | | | | | | | | | | | | | | | | | | | | | | | | | | | | | | | | | | | | | | | | | | | | | | | | | | | | | | | | | | | | | | | | | | | | | | | | | | | | | | | | | | | | | | | | | | | | | | | | | | | | | | | | | | | | | | | | | | | | | | | | | | | | | | | | | | | | | | | | | | | | | | | | | |
|----|----------|----------|----------|----------|----------|----------|----------|----------|----------|----------|----------|----------|----------|----------|----------|----------|----------|----------|----------|----------|----------|----------|----------|----------|----------|----------|----------|----------|----------|----------|----------|----------|----------|----------|----------|----------|----------|----------|----------|----------|----------|----------|----------|----------|----------|----------|----------|----------|----------|----------|----------|----------|----------|----------|----------|----------|----------|----------|----------|----------|----------|----------|----------|----------|----------|----------|----------|----------|----------|----------|----------|----------|----------|----------|----------|----------|----------|----------|----------|----------|----------|----------|----------|----------|----------|----------|----------|----------|----------|----------|----------|----------|----------|----------|----------|----------|----------|----------|----------|----------|----------|----------|----------|----------|----------|----------|----------|----------|----------|----------|----------|----------|----------|----------|----------|----------|----------|----------|----------|----------|----------|----------|----------|----------|----------|----------|----------|----------|----------|----------|----------|----------|----------|----------|----------|----------|----------|----------|----------|----------|----------|----------|----------|----------|----------|----------|----------|----------|----------|----------|----------|----------|----------|----------|----------|----------|----------|----------|----------|----------|----------|----------|----------|----------|----------|----------|----------|----------|----------|----------|----------|----------|----------|----------|----------|----------|----------|----------|----------|----------|----------|----------|----------|----------|----------|----------|----------|----------|----------|----------|----------|----------|----------|----------|----------|----------|----------|----------|----------|----------|----------|----------|----------|----------|----------|----------|----------|----------|----------|----------|----------|----------|----------|----------|----------|----------|----------|----------|----------|----------|----------|----------|----------|----------|----------|----------|----------|----------|----------|----------|----------|----------|----------|----------|----------|----------|----------|----------|----------|----------|----------|----------|----------|----------|----------|----------|----------|----------|----------|----------|----------|----------|----------|----------|----------|----------|----------|----------|----------|----------|----------|----------|----------|----------|----------|----------|----------|----------|----------|----------|----------|----------|----------|----------|----------|----------|----------|----------|----------|----------|----------|----------|----------|----------|----------|----------|----------|----------|----------|----------|----------|----------|----------|----------|----------|----------|----------|----------|----------|----------|----------|----------|----------|----------|----------|----------|----------|----------|----------|----------|----------|----------|----------|----------|----------|----------|----------|----------|----------|----------|----------|----------|----------|----------|----------|----------|----------|----------|----------|----------|----------|----------|----------|----------|----------|----------|----------|----------|----------|----------|----------|----------|----------|----------|----------|----------|----------|----------|----------|----------|----------|----------|----------|----------|----------|----------|----------|----------|----------|----------|----------|----------|----------|----------|----------|----------|----------|----------|----------|----------|----------|----------|----------|----------|----------|----------|----------|----------|----------|----------|----------|----------|----------|----------|----------|----------|----------|----------|----------|----------|----------|----------|----------|----------|----------|----------|----------|----------|----------|----------|----------|----------|----------|----------|----------|----------|----------|----------|----------|----------|----------|----------|------------|
| 75 | PB SL | PB SL | PB SL | PB SL | PB SL | PB SL | PB SL | PB SL | PB SL | PB SL | PB SL | PB SL | PB SL | PB SL | PB SL | PB SL | PB SL | PB SL | PB SL | PB SL | PB SL | PB SL | PB SL | PB SL | PB SL | PB SL | PB SL | PB SL | PB SL | PB SL | PB SL | PB SL | PB SL | PB SL | PB SL | PB SL | PB SL | PB SL | PB SL | PB SL | PB SL | PB SL | PB SL | PB SL | PB SL | PB SL | PB SL | PB SL | PB SL | PB SL | PB SL | PB SL | PB SL | PB SL | PB SL | PB SL | PB SL | PB SL | PB SL | PB SL | PB SL | PB SL | PB SL | PB SL | PB SL | PB SL | PB SL | PB SL | PB SL | PB SL | PB SL | PB SL | PB SL | PB SL | PB SL | PB SL | PB SL | PB SL | PB SL | PB SL | PB SL | PB SL | PB SL | PB SL | PB SL | PB SL | PB SL | PB SL | PB SL | PB SL | PB SL | PB SL | PB SL | PB SL | PB SL | PB SL | PB SL | PB SL | PB SL | PB SL | PB SL | PB SL | PB SL | PB SL | PB SL | PB SL | PB SL | PB SL | PB SL | PB SL | PB SL | PB SL | PB SL | PB SL | PB SL | PB SL | PB SL | PB SL | PB SL | PB SL | PB SL | PB SL | PB SL | PB SL | PB SL | PB SL | PB SL | PB SL | PB SL | PB SL | PB SL | PB SL | PB SL | PB SL | PB SL | PB SL | PB SL | PB SL | PB SL | PB SL | PB SL | PB SL | PB SL | PB SL | PB SL | PB SL | PB SL | PB SL | PB SL | PB SL | PB SL | PB SL | PB SL | PB SL | PB SL | PB SL | PB SL | PB SL | PB SL | PB SL | PB SL | PB SL | PB SL | PB SL | PB SL | PB SL | PB SL | PB SL | PB SL | PB SL | PB SL | PB SL | PB SL | PB SL | PB SL | PB SL | PB SL | PB SL | PB SL | PB SL | PB SL | PB SL | PB SL | PB SL | PB SL | PB SL | PB SL | PB SL | PB SL | PB SL | PB SL | PB SL | PB SL | PB SL | PB SL | PB SL | PB SL | PB SL | PB SL | PB SL | PB SL | PB SL | PB SL | PB SL | PB SL | PB SL | PB SL | PB SL | PB SL | PB SL | PB SL | PB SL | PB SL | PB SL | PB SL | PB SL | PB SL | PB SL | PB SL | PB SL | PB SL | PB SL | PB SL | PB SL | PB SL | PB SL | PB SL | PB SL | PB SL | PB SL | PB SL | PB SL | PB SL | PB SL | PB SL | PB SL | PB SL | PB SL | PB SL | PB SL | PB SL | PB SL | PB SL | PB SL | PB SL | PB SL | PB SL | PB SL | PB SL | PB SL | PB SL | PB SL | PB SL | PB SL | PB SL | PB SL | PB SL | PB SL | PB SL | PB SL | PB SL | PB SL | PB SL | PB SL | PB SL | PB SL | PB SL | PB SL | PB SL | PB SL | PB SL | PB SL | PB SL | PB SL | PB SL | PB SL | PB SL | PB SL | PB SL | PB SL | PB SL | PB SL | PB SL | PB SL | PB SL | PB SL | PB SL | PB SL | PB SL | PB SL | PB SL | PB SL | PB SL | PB SL | PB SL | PB SL | PB SL | PB SL | PB SL | PB SL | PB SL | PB SL | PB SL | PB SL | PB SL | PB SL | PB SL | PB SL | PB SL | PB SL | PB SL | PB SL | PB SL | PB SL | PB SL | PB SL | PB SL | PB SL | PB SL | PB SL | PB SL | PB SL | PB SL | PB SL | PB SL | PB SL | PB SL | PB SL | PB SL | PB SL | PB SL | PB SL | PB SL | PB SL | PB SL | PB SL | PB SL | PB SL | PB SL | PB SL | PB SL | PB SL | PB SL | PB SL | PB SL | PB SL | PB SL | PB SL | PB SL | PB SL | PB SL | PB SL | PB SL | PB SL | PB SL | PB SL | PB SL | PB SL | PB SL | PB SL | PB SL | PB SL | PB SL | PB SL | PB SL | PB SL | PB SL | PB SL | PB SL | PB SL | PB SL | PB SL | PB SL | PB SL | PB SL | PB SL | PB SL | PB SL | PB SL | PB SL | PB SL | PB SL | PB SL | PB SL | PB SL | PB SL | PB SL | PB SL | PB SL | PB SL | PB SL | PB SL | PB SL | PB SL | PB SL | PB SL | PB SL | PB SL | PB SL | PB SL | PB SL | PB SL | PB SL | PB SL | PB SL | PB SL | PB SL | PB SL | PB SL | PB SL | PB SL | PB SL | PB SL</ |
|----|----------|----------|----------|----------|----------|----------|----------|----------|----------|----------|----------|----------|----------|----------|----------|----------|----------|----------|----------|----------|----------|----------|----------|----------|----------|----------|----------|----------|----------|----------|----------|----------|----------|----------|----------|----------|----------|----------|----------|----------|----------|----------|----------|----------|----------|----------|----------|----------|----------|----------|----------|----------|----------|----------|----------|----------|----------|----------|----------|----------|----------|----------|----------|----------|----------|----------|----------|----------|----------|----------|----------|----------|----------|----------|----------|----------|----------|----------|----------|----------|----------|----------|----------|----------|----------|----------|----------|----------|----------|----------|----------|----------|----------|----------|----------|----------|----------|----------|----------|----------|----------|----------|----------|----------|----------|----------|----------|----------|----------|----------|----------|----------|----------|----------|----------|----------|----------|----------|----------|----------|----------|----------|----------|----------|----------|----------|----------|----------|----------|----------|----------|----------|----------|----------|----------|----------|----------|----------|----------|----------|----------|----------|----------|----------|----------|----------|----------|----------|----------|----------|----------|----------|----------|----------|----------|----------|----------|----------|----------|----------|----------|----------|----------|----------|----------|----------|----------|----------|----------|----------|----------|----------|----------|----------|----------|----------|----------|----------|----------|----------|----------|----------|----------|----------|----------|----------|----------|----------|----------|----------|----------|----------|----------|----------|----------|----------|----------|----------|----------|----------|----------|----------|----------|----------|----------|----------|----------|----------|----------|----------|----------|----------|----------|----------|----------|----------|----------|----------|----------|----------|----------|----------|----------|----------|----------|----------|----------|----------|----------|----------|----------|----------|----------|----------|----------|----------|----------|----------|----------|----------|----------|----------|----------|----------|----------|----------|----------|----------|----------|----------|----------|----------|----------|----------|----------|----------|----------|----------|----------|----------|----------|----------|----------|----------|----------|----------|----------|----------|----------|----------|----------|----------|----------|----------|----------|----------|----------|----------|----------|----------|----------|----------|----------|----------|----------|----------|----------|----------|----------|----------|----------|----------|----------|----------|----------|----------|----------|----------|----------|----------|----------|----------|----------|----------|----------|----------|----------|----------|----------|----------|----------|----------|----------|----------|----------|----------|----------|----------|----------|----------|----------|----------|----------|----------|----------|----------|----------|----------|----------|----------|----------|----------|----------|----------|----------|----------|----------|----------|----------|----------|----------|----------|----------|----------|----------|----------|----------|----------|----------|----------|----------|----------|----------|----------|----------|----------|----------|----------|----------|----------|----------|----------|----------|----------|----------|----------|----------|----------|----------|----------|----------|----------|----------|----------|----------|----------|----------|----------|----------|----------|----------|----------|----------|----------|----------|----------|----------|----------|----------|----------|----------|----------|----------|----------|----------|----------|----------|----------|----------|----------|----------|----------|----------|----------|----------|----------|----------|----------|----------|----------|----------|----------|------------|

57

Jan 9-1918 Cuts Corrections

Between 10th & 15-138-28

= .04054 of a foot N for each ft W minus 34.35 ft

Stk Mark

| | | | | |
|------------|---------|---------------------|-----------------|---------|
| ✓ 200 W = | 192.31 | W ^{3/4} N | 8.11 - 34.35 = | 26.24 S |
| ✓ 400 W = | 392.31 | W ^{1/2} N | 16.22 - 34.35 = | 18.13 S |
| ✓ 600 W = | 592.31 | W ^{1/4} N | 24.33 - 34.35 = | 10.02 S |
| ✓ 800 W = | 792.31 | W ^{1/8} N | 32.44 - 34.35 = | 1.91 S |
| ✓ 1000 W = | 992.31 | W ^{1/16} N | 40.54 - 34.35 = | 6.19 N |
| ✓ 1200 W = | 1192.31 | W ^{1/32} N | 48.65 - 34.35 = | 14.30 N |

✓ 1324.46 = 1316.77 W of Sec Cor and goes
N 53.67 - 34.35 = 19.32 N
To E ^{1/16} Bet 10th & 15

| | | | | |
|-------------|---------|----------------------|------------------|---------|
| 1400. W = | 1392.31 | W ^{3/32} N | 56.76 - 34.35 = | 22.41 N |
| ✓ 1600. W = | 1592.31 | W ^{1/16} N | 64.87 - 34.35 = | 30.52 N |
| 1800 W = | 1792.31 | W ^{1/32} N | 72.98 - 34.35 = | 38.63 N |
| 2000 W = | 1992.31 | W ^{1/64} N | 81.08 - 34.35 = | 46.73 N |
| ✓ 2200 W = | 2192.31 | W ^{1/128} N | 89.19 - 34.35 = | 54.84 N |
| 2400 W = | 2392.31 | W ^{1/256} N | 97.30 - 34.35 = | 62.95 N |
| 2600 W = | 2592.31 | W ^{1/512} N | 105.41 - 34.35 = | 71.06 N |

✓ 2641.22 = 2633.53 W of Sec Cor and goes
N 107.07 - 34.35 = 72.72 N
To ^{1/4} Cor Bet 10-15

| | | | |
|-----------|--------|------------------|----------|
| 28.00 W | goes N | 113.52 - 34.35 = | 79.17 N |
| 30.00 W | " N | 121.62 - 34.35 = | 87.27 N |
| ✓ 32.00 W | " N | 129.73 - " = | 95.38 N |
| 34.00 W | " N | 137.84 - " = | 103.49 N |
| 36.00 W | " N | 145.95 - " = | 111.60 N |
| 38.00 W | " N | 154.06 - " = | 119.71 N |
| 40.00 W | " N | 162.16 - " = | 127.81 N |

3957.99 W is 3950.30 W of Sec Cor

and goes N 160.46 - 34.35 = 126.11 N

To W ^{1/16} Cor bet 10th & 15

For Corrections See Page 89-Book 6.

John W. Curo

Jan 9-1918. Contd

Harold Transit rch 200. ft Lymanrd Huss
a rch continue Range line S.

South Bet 19th & 24 Beg @ 10.830¹⁰

@ 12.086 S. int sup. @ 12.275 L. same

12 491. 4th S Hub: @ 12 720. enter cranberry bog

14 685 L. 14 806 7th Hub: @ 15 300 (about)

old wagon trail E+W: about 15 700 S
sled track E+W in narrow meadow

15. 819. 3rd Hub Quit for night all get
in very late Clear bright day 12°
below in the morning

We did not find Homer's slabs if he
set one for Cor 1-19-24-25-30.

Lyman Hardy cut his lot

John W Curro

Jan 10-1918 Thurs.

Hurr and team, Geo Hardy-Herald
Curo and J W Curo work very cold NW
wind ice particles falling continue

South Bet 25th and 30 Rg Line
@ 16.400 enter big open lam swp ETW
up turned roots 17340 LV ETW

17503.20 Hub. 18594³⁰ Hub 19.100 S
enter big open lam swp up turned
roots. 3. stacks hay near N.E. and
19.965 Hub on poplar point coming from
the West. 20375 Curo sled track
NE & SW in meadow Hay cut along rim
20400 S Lw: NE-SW

20.728⁵⁰ S. Acc Co set by Dorman
sets West 5.20 feet

At this point being Co to

25-30-31-36-138-28-29 US notes
say N.B. 5 N 81 E 28 LKS = 18.48 Feet
W.Pins 16 N 37 W 33 " = 21.78 "
Hafen 12 S 30 E 30 " = 19.80 "
W.Pins 24 S 61 W 42 " = 27.72 "
(S 59 W)

We find a 4x4 oak stake set by
F.A. Dorman in a U 1914 set from the
dead stub of the SW pins which is
plainly marked and which checker
John W Curo

(60) 138-28-29
Timothy Tust

157

Jan 10-1918

for course and measure with the stake.

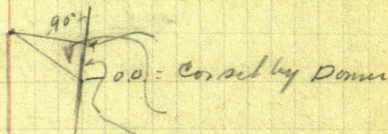
the Birch and Aspen are gone - We find very
tall stump of the NW WP in plainly
marked but it stands N 87° W (Not 37°)
and is 25.74 feet away (39 Lks Not 33")

I "dismiss" this line however and
use it for a new B.T. New B.T's viz 8°

Birch mag ^{3 16° 30' E} S 17° E 27.70 Feet
Big WP stump ^{52° E} 30° N 55° E 115.10 feet to
flat spot in bore where we will drive
a spike later Set with Greeley
Compass 28° S + 200 steel tape

Stakes set every 200 feet the entire
4. miles of this line and set with
transit

Trans on
1-6-7-12



Harald and Hardy's
kids quinned this morning

Harald comes over to
Huss in evening
and helps me

Very cold night

Sec on

90° angle
20.728.505
52°

John W. Curo

158

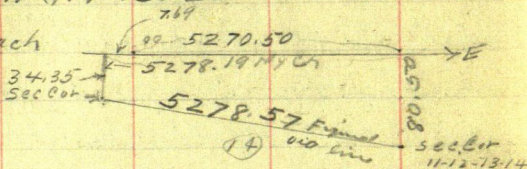
61

138-28
Trinity Twp

Jan 11-1918 Friday Corrections

Between 11 & 14-138-28

5278.19 ⁷⁶⁹ 1110 46.15
 = .008743 S. for each
 foot E. Plsu
 34.35



Slake Mkd

200 = 207.69 " S 1.75 + 34.35 = 36.10 S
 400 = 407.69 " S 3.50 + " = 37.85 S
 600 = 607.69 " S 5.25 + " = 39.60 S
 800 = 807.69 " S 7.00 + " = 41.35 S
 1000 = 1007.69 " S 8.74 + " = 43.09 S
 1200 = 1207.69 " S 10.49 + " = 44.84 S

1311.86 E = 1319.55 E of Sec Cor and goes
 South 11.54 + 34.35 = 45.89 S To W
 1/16 Bet 11 and 14 - 138-28

1400 = 1407.69 " S 12.24 + 34.35 = 46.59 S
 1600 = 1607.69 " S 13.99 + 34.35 = 48.34 S
 1800 = 1807.69 " S 15.74 + " = 50.09 S
 2000 = 2007.69 " S 17.49 + " = 51.84 S
 2200 = 2207.69 " S 19.24 + " = 53.59 S
 2400 = 2407.69 " S 20.98 + " = 55.33 S
 2600 = 2607.69 " S 22.73 + " = 57.08 S

2631.41 E = 2639.10 E of Sec Cor and goes
 South 23.08 + 34.35 = 57.43 S To 1/4 Cor
 Bet 11 and 14 - 138-28

2800 = 2807.69 " S 24.48 + 34.35 = 58.83 S
 3000 = 3007.69 " S 26.23 " = 60.58 S
 3200 = 3207.69 " S 27.98 " = 62.33 S
 3400 = 3407.69 " S 29.73 " = 64.08 S
 3600 = 3607.69 " S 31.47 " = 65.82 S
 3800 = 3807.69 " S 33.22 " = 67.57 S

Slk Mkd

3950.96 E = 3958.65 E of Sec Cor and goes
 South 34.62 Plus 34.35 = 68.97 To E 1/16 bet
 11 and 14 - 138-28

4200 = 4207.69 " S 36.72 + 34.35 = 71.07 S
 4400 = 4407.69 " S 38.47 " = 72.82 S
 4600 = 4607.69 " S 40.22 " = 74.57 S
 4800 = 4807.69 " S 41.97 " = 76.32 S
 5000 = 5007.69 " S 43.72 " = 78.07 S
 5270.50 = 5278.19 E goes S 46.15 + 34.35 = 80.50 S
 To Sec Cor 11-12-13-14 - 138-28

John W. Cocco

Jan 11-1918 Contd

Cold. 27° below zero. NW wind spitting
frost particles we do not work. Harald & I
figure connection all AM.

I and Huss haul wood in P.M.
Harald roods in bed all P.M. at
Hardy's Alma - Reed and I hang
fire at Huss

Continued on Page 25. Book 6, 206

| For Sec. | Sec Page | FOR-138-29- |
|-------------|-------------|---|
| 1 | | 2-4-5-8-14-66-137-141 |
| 2 | | 56-63-66-68 |
| 3 | | 56 |
| 10 | | 22-45-56- |
| 11 | | 22-44-45-47-50-55-56-58-63-66-68-74-76-77- |
| 12 | | 14-21-47-50-58-66-77-79-137-139-141 |
| 13 | | 12-13-14-16-21-35-47-50-58-71-77-79-133-139 |
| 14 | | 9-10-22-23-24-35-44-45-47-50-58-71-77 |
| 15 | | 9-10-22-23-24-45- |
| 22 | | 9-22-23-24- |
| 23 | | 9-10-22-23-24-34-35-36-37-38-71 |
| 24 | | 10-12-13-16-17-20-21-34-35-36-37-38-71-133 |
| 25 | | 17-18-20-37-38-43-156- |
| 26 | | 23-37-38-43- |
| 27 | | 23- |
| 34 | | - |
| 35 | | - |
| 36 | | 18-20- |

138-28-Book 5

see Page

| | |
|----|--------------------------------|
| 1 | |
| 2 | 115 |
| 3 | 115 |
| 4 | |
| 5 | |
| 6 | 4-8-14-137-141 |
| 7 | 14-21-79-137-139-141 |
| 8 | |
| 9 | 120- |
| 10 | 93-95-115-118-120-134-154 |
| 11 | 93-95-111-113-115-134-158 |
| 12 | 113- |
| 13 | 100-113 |
| 14 | 90-93-95-100-103-111-113-158 |
| 15 | 90-93-95-103-104-118-120-154 |
| 16 | 104-120-122-123-125 |
| 17 | 123-125-127-129-130- |
| 18 | 13-14-16-21-79-130-132-133-139 |
| 19 | 13-16-17-20-21-130-132-133- |
| 20 | 123-127-129-130 |
| 21 | 104-122-123 |
| 22 | 78-90-95-99-100-103-104 |
| 23 | 87-90-95-99-100-103 |
| 24 | 100- |
| 25 | |
| 26 | Ditch Pg 25- -86-99-152 |
| 27 | 86-99-136-146-152 |
| 28 | 136-146- |
| 29 | |
| 30 | 17-18-20-156 |
| 31 | 18-20- |
| 32 | |
| 33 | 136-146-152 |
| 34 | 136-146-152 |
| 35 | |
| 36 | |