

201

WILKINSON
4th STREET MARK

ENGINEERS'
FIELD BOOK
No. 201

Book No 1

John A. Currier
Brainerd Mining
July 1918

Copy
of A 2

Copyright 1918 by John A. Currier

Note:

If this Book is lost
Finder please return same
to John W. Currier -
Brainerd Mining and rec
liberal Reward.

Index

July 6 to Aug 17-1918. Co Road Grade Pg 1 To 45
CURVES 46.
Aug 15 to Oct 22-1922. Crown Wing Cuts Pg 46-52
July 7-1925. Continued St Mathias Work Pg 53 to 66

Note - This is a copy of my
notes in Mott's field book
No 25. H.W. Com on
Gull Lake Road

INDEX

Sta	To	Sta	Page	To	Page
300	To	375	2	To	8
200	To	230	9	To	14
310	To	327	16	To	20
303	To	309	21	To	21
294	To	303	22	To	23
278	To	286	24	To	25
375	To	384	26	To	28
287	To	294	29	To	30
383	To	388	31	To	32
278	To	230	Run Backwards	33	To 41
327	To	335	42	To	43
328	To	334	44	To	44
Curves			45		

Crow Wing Twp Road grades 46 To 52
 St Matthias 53 To 109 Full

2nd 3

July 6-1918 Curo
White
barrel Euro
Reid

Point	BS+	HI	FS-	Elev	Grade
330					100.0
BM	2.80	107.22			
330+25			7.5		99.7
330+60			8.4		99.2
330+65			8.2		99.0
331			8.5		98.0
BM TP	0.40	103.13	4.49	102.73	
331+35			2.4	97.0	97.0
331+60			4.1	96.2	96.2
331+80			4.0	95.6	95.6
332			4.3	95.0	95.0
+6			5.0		
+20			7.6	94.4	94.4
+25			8.8		
+40			11.5	93.8	93.8
+55			14.0		93.3
333			16.3		92.0
BM			11.93	91.20	

July 8-1918 Curo
White
G Euro

BM	2.97	94.17		91.20
333+50			7.3	90.7
334			6.0	89.5

Cross Sections

Platted

Page
2nd 3

Grade
rod

	L	C	R
	C5.0 24	9 14	0.0 14
old BM 45' L Sta 329+35 = 15" NP (JP) Elev 104.42			
7.5	C4.5 33	C3.0 22.0	F0.0 12.9
8.0	C1.8 33	C1.0 25	F0.5 12.8
8.2	C2.0 33	C1.2 25	F0.8 12.8
8.2	C1.7 33	C0.9 19.8	F0.0 19.0
8.2	C1.7 33	C0.9 19.8	F0.0 19.0
New BM on top 4" Oak Stump 40' L Sta 332+00 Elev 102.73			
6	C2.5 33	C3.3 25	C3.7 22.4
6.9	Same out	C2.8 21.8	C2.8 21.8
7.5	C5.0 33	C4.5 23.5	C3.5 19
8.1	C5.5 33	C5.7 24.7	C3.0 19.0
8.2	C4.8 33	C5.5 24.5	C3.5 19.0
8.7	C4.5 33	C4.3 23.3	C3.0 19.0
8.8	C4.5 33	C3.0 22.6	C3.0 19.0
9.3	C4.8 33	C3.0 22.0	C3.0 19.0
9.8	C4.0 33	C3.0 19	C3.0 19.0
10.1	F1.0 33	F4.2 18.3	F3.1 16.7
New BM on cross on top 12" J.P. Stump 33' R Sta 333 Elev 91.20			
33	F3.7 33	F4.3 25	F5.2 18.4
4.7	Same out	F3.8 25	F2.8 16.2

2 and +

July 8-1918 *Curio White Reid*

Point	BS +	HI	FS -	Elev	Grafe
		94.17			
334+50			5.0	89.2	
334+60			4.5	89.2	
335			4.9	89.0	
335+20			4.4	89.0	
335+60			4.6	89.0	
335+70			5.2	89.0	
336			5.4	89.0	
336+50			5.2	89.0	

July 6-1918 *Curio White Gerald Curio Reid*

Page 14 Book 25

337		94.17	5.4	89.0
TP	4.52	94.41	4.28	89.89
BM			5.36	89.05
BM	5.36	94.43		89.07
338			5.8	89.0
338+65			7.4	89.0
339			6.5	89.0

Cross Sections

Platted

Page 3 and 4

L	R
<p>F1.0 23 F2.2 25 F1.3 14. 00 0.2 F2.6 15.9 F3.8 25 F3.0 33</p> <p>F3.0 33 F1.9 25 F1.0 13.5 4 0.0 0.5 C1.0 3.0 C0.8 7 C0.0 8 F2.6 15.9 F4.0 25 F3.0 33</p> <p>F1.7 33 F1.0 25 F0.8 12.2 3 0.0 0.3 C0.8 8 0.0 F0.5 11 F2.9 25 F2.2 33</p> <p>F1.6 33 F0.7 25 0.0 0.5 C1.3 16. 0.0 F2.3 25 F2.2 33</p> <p>F1.3 33 F0.4 25 C0.0 5 C1.2 14 0.0 F2.3 25 Same out</p> <p>F1.2 33 F0.8 25 0.0 0.0 C1.2 14 C0.4 19.4 F1.8 25 F2.6 33</p> <p>F1.5 23 F1.0 25 F0.4 19 F0.3 12.5 F 0.2 C1.6 19 C1.4 20.4 C0.6 25 C0.0 28 F1.7 33</p> <p>F2.2 33 F1.2 25 F0.4 19 0.0 0.0 0.0 C1.1 20.1 C1.0 25 Same out</p>	<p>5.0 5.0 5.2 5.2 5.2 5.2 5.2 5.2 5.2</p>

5.2	F2.8 33 F1.8 25 F0.9 19 F0.4 12.0 0.0 0.0 F 0.2 F1.0 7 0.0 0.05 0.12 33
-----	---

75' R S 1/2 337+60 Elev 89.07.0K *chuck 0.02*

Old BM 75' R S 1/2 337+60 Elev 89.07

5.4	9.0 F0.2 25 0.0 19 C0.6 16. 0.0 0.4 F 0.4 15.8 F2.5 25 F1.7 33 F0.7 33
5.4	F0.4 33 F0.2 25 F0.3 19 F1.0 13.5 20 0.0 C0.4 19 C0.5 25 33
5.4	F0.7 33 F0.5 25 F0.4 19 F0.3 12.5 10 F 1.1 F1.7 12 F1.6 14.4 F1.0 19 F0.4 25 C0.4 33

July 15-1918 Curo
6 Curo

Point	BS+	HI	FS-	Elev	Grade
BM	4.64	93.71		89.07	
340					
341					
341+50			...		
342					
BM			3.68	90.03	

July 15-1918

John W. Curo π
Garold W. Curo Rod.
James C. Mahlem Checks Clay Wagons
With Arden White

BM	4.78	94.81		90.03	
342+78 =343			6.2		
344			5.4		
345			5.1		
346			5.0		
347			4.5		
348			4.3		
TP	4.46	96.46	2.81	92.00	
BM			5.28	91.18	
BM	5.28	96.39		91.11	
349			6.0		
350			6.5		

Cross Sections
Turnpiking

Page 4
and 5

L	E	R
On Old BM		
$\frac{5.0}{25}$	$\frac{4.9}{19}$	$\frac{4.8}{12}$
$\frac{5.2}{25}$	$\frac{5.1}{19}$	$\frac{5.0}{12}$
$\frac{4.5}{25}$	$\frac{4.8}{19}$	$\frac{5.2}{12}$
$\frac{4.6}{25}$	$\frac{4.6}{19}$	$\frac{5.0}{12}$

New BM = Spike in 12" Pine Stub 33' L
Sta 342. + 70

Cross Sections - On Turnpiking

On New BM 33' L S/L		
$\frac{6.0}{25}$	$\frac{5.8}{19}$	$\frac{6.2}{12}$
$\frac{5.6}{25}$	$\frac{5.5}{19}$	$\frac{6.7}{12}$
$\frac{4.9}{25}$	$\frac{4.7}{19}$	$\frac{4.8}{12}$
$\frac{4.6}{25}$	$\frac{4.7}{19}$	$\frac{5.0}{12}$
$\frac{4.6}{25}$	$\frac{4.7}{19}$	$\frac{4.7}{12}$
$\frac{5.1}{25}$	$\frac{4.9}{19}$	$\frac{4.7}{12}$

On top of 3" JP Stump 33' L S/L
On old BM 65' L S/L 348 = 4" JP Elev 91.11

$\frac{6.9}{25}$	$\frac{7.1}{19}$	$\frac{6.5}{12}$
$\frac{7.4}{25}$	$\frac{6.9}{19}$	$\frac{6.8}{12}$
$\frac{6.0}{25}$	$\frac{5.8}{19}$	$\frac{5.6}{12}$



July 16-1918 Curo
Guro
J. Mahlum

Curo S. Hober Cheeking Clay wogon

Point	BS +	HI	FS -	Elev	Grade
351		96.39			
BM T.P.	5.02	96.18	6.23	90.16	
352			4.8		
353			5.0		
354			4.8		
354+630					
355			4.6		
355+380					
BM T.P.	5.31	96.42	4.07	91.11	
356			5.7		
EC					
356+13					
357			5.7		
358			4.8		
359			4.4		
360			4.8		
BM			4.70	91.72	

Curo Secliner
on Trumpeting

L	C'	R
$\frac{71}{25}$	$\frac{71}{19}$	$\frac{6.8}{12}$
$\frac{6.7}{12}$	$\frac{6.0}{12}$	$\frac{5.4}{19}$
$\frac{5.3}{25}$	$\frac{5.4}{19}$	$\frac{5.3}{25}$
New BM 4" Oak 33' L Slaton 350+90 E-90.16		
$\frac{5.2}{25}$	$\frac{5.7}{19}$	$\frac{5.3}{12}$
$\frac{4.8}{12}$	$\frac{4.3}{12}$	$\frac{4.2}{19}$
$\frac{3.9}{25}$	$\frac{3.9}{19}$	$\frac{3.8}{25}$
$\frac{5.1}{25}$	$\frac{5.2}{19}$	$\frac{5.2}{12}$
$\frac{5.0}{12}$	$\frac{4.1}{12}$	$\frac{3.9}{19}$
$\frac{3.8}{25}$	$\frac{3.8}{19}$	$\frac{3.8}{25}$
BC		
$\frac{5.6}{25}$	$\frac{5.8}{19}$	$\frac{5.1}{12}$
$\frac{4.6}{12}$	$\frac{4.6}{19}$	$\frac{4.5}{25}$
PI EX.5.0		
New BM 4" JP 35' L Slaton 355+70		
$\frac{6.8}{25}$	$\frac{6.3}{19}$	$\frac{6.0}{12}$
$\frac{5.7}{12}$	$\frac{5.7}{12}$	$\frac{5.3}{19}$
$\frac{5.3}{25}$	$\frac{5.3}{19}$	$\frac{5.3}{25}$
EC		
$\frac{5.7}{25}$	$\frac{6.0}{19}$	$\frac{6.0}{12}$
$\frac{5.7}{12}$	$\frac{5.4}{12}$	$\frac{5.0}{19}$
$\frac{4.8}{25}$	$\frac{4.5}{12}$	$\frac{4.2}{19}$
$\frac{4.5}{25}$	$\frac{4.5}{19}$	$\frac{4.5}{25}$
$\frac{5.2}{25}$	$\frac{5.2}{19}$	$\frac{4.8}{12}$
$\frac{4.4}{12}$	$\frac{4.1}{12}$	$\frac{4.1}{19}$
$\frac{4.7}{25}$	$\frac{4.7}{19}$	$\frac{4.7}{25}$
$\frac{5.3}{25}$	$\frac{5.3}{19}$	$\frac{5.1}{12}$
$\frac{4.8}{12}$	$\frac{4.7}{12}$	$\frac{4.7}{19}$
$\frac{4.7}{25}$	$\frac{4.7}{19}$	$\frac{4.7}{25}$
New BM Spike in 12" Oak 40' L Slaton 360+50		
Old BM No 360+25 gone?		

July 17-1918

curr
mullum
& curr
Haber checks Clay wagon

Point	BS -	HI -	FS -	Elev	Grade	cd Rd
BM	4.33	96.05		91.72		
361			4.6			
362			4.5			
363			4.4			
364			4.1			
365			4.3			
366			4.9			
367			5.3			
BM			1.85	94.20		
BM	1.26	95.55		94.29		
368			4.2			
369			4.1			
370			4.7			
371			5.2			
BM TP	2.76	94.66	3.65	94.90		
372			3.5			
373			4.3			
374			4.2			
375			4.10		91.5	3.2
BM			2.39	92.27		
+10						

July 18-1918 curr
mullum
& curr
Haber checks gravel

Cross sections on
Tramplining

L	C	R
5.0 25	4.7 19	4.9 12
4.6 25	4.5 12	4.6 25
5.1 25	4.9 19	4.7 12
4.6 25	4.4 19	4.4 12
4.6 25	4.4 19	4.4 12
5.2 25	5.0 19	4.9 12
5.1 25	5.3 19	4.8 12
5.2 25	4.9 19	4.7 12
5.3 25	4.9 19	5.3 12
5.0 25	4.7 19	5.0 12

Old BM 35' L No 367 + 40 = 18" Oak EI = 94.29 (0.09 ft)

Old BM 35' L No 367 + 40 = 18" Oak EI = 94.29

4.0 25	4.4 19	4.5 12	4.2 12	4.3 12	3.7 19	3.8 25
4.3 25	4.6 19	4.1 12	4.1 12	4.7 12	4.3 19	4.2 25
4.3 25	3.6 19	3.9 12	4.7 6	4.7 6	3.9 12	4.0 19
4.3 25	4.2 19	4.0 12	5.2 3	5.2 3	5.2 3	3.6 12
						4.4 19
						5.5 25

New BM 20' L No 371 + 80 Spike in 12" Oak

3.4 25	3.3 19	3.1 12	4.0 9	4.0 4	3.5 3	3.5 3	4.1 2	4.1 7	3.6 8	3.8 12	4.4 19	5.5 25
3.7 25	3.6 19	3.7 12	4.5 10	4.3 10	4.3 10	4.3 10	3.9 12	4.6 19	4.6 19	5.4 25		
3.7 25	3.7 19	4.1 12	4.2 12	4.2 12	4.0 12	4.5 19	5.8 25					

Cross Sections

0.20 38	0.15 25	0.08 20	0.08 11	0.0 10	0.8 8	0.8 0.8	0.1 9	0.8 132	0.12 19	0.19 25	0.34 33
------------	------------	------------	------------	-----------	----------	------------	----------	------------	------------	------------	------------

New BM 30' R No 375 + 10 = 4" Oak EI = 92.27

"Continued on Pg 26. Card"

Pg 9-10
and 11July 19/1918 Cury
Madison
& Cury

Haber Check, Clay Loods

Point	BS+	HI	FS-	Elev	Grade
BM.	7.22	103.01		95.79	

200			7.2	95.18	7.2
-----	--	--	-----	-------	-----

201			4.1	96.8	6.1
-----	--	--	-----	------	-----

201+50			5.8	97.0	6.0
--------	--	--	-----	------	-----

202			5.8	97.0	6.0
-----	--	--	-----	------	-----

203			6.2	96.6	6.4
-----	--	--	-----	------	-----

BM.TP	3.85	102.55	4.31	98.70	
-------	------	--------	------	-------	--

204			5.2	97.2	5.4
-----	--	--	-----	------	-----

205			4.8	97.8	4.8
-----	--	--	-----	------	-----

206			5.2	97.4	5.2
-----	--	--	-----	------	-----

July 19-1918

207			5.0	97.4	5.2
-----	--	--	-----	------	-----

208			4.6	98.0	4.6
-----	--	--	-----	------	-----

BM.TP	2.75	101.77	3.53	99.02	
-------	------	--------	------	-------	--

+50			3.8	97.9	3.9
-----	--	--	-----	------	-----

209			3.9	97.8	4.0
-----	--	--	-----	------	-----

210			4.0	97.8	4.0
-----	--	--	-----	------	-----

211			4.2	97.6	4.2
-----	--	--	-----	------	-----

212			4.6	97.0	4.8
-----	--	--	-----	------	-----

+50			4.9	96.8	5.0
-----	--	--	-----	------	-----

213			5.1	96.6	5.2
-----	--	--	-----	------	-----

BM.TP			4.56	97.21	
-------	--	--	------	-------	--

Finishing Stakes on Linnepicking

L C R

OLL BM 80' L S 16 199+00=8'JP E1=95.79

00.5	00	F02	-1.6	-1.0	00.7
20	12	16.5	17	20	
00.7	-1.6	F01	00	F01	-1.5
19.5	10.5	12	12	16.5	0.4
-0.3	-0.3	F03	0	F03	-1.5
19.1	10.5	12	0.2	12	16.5
-0.5	-0.5	F06	0	F06	-1.5
19.1	10.5	12	0.2	12	16.5
-0.6	-1.0	F02	0	F05	-1.6
19.1	10.5	12	0.2	12	16.5

New BM On Top 4'JP plump 35' L AL 203+10

-0.8	-0.8	F06	0	F06	-0.8
19.1	10.5	12	0.2	12	16.5
-0.5	-0.5	00	0	F06	-2.2
19.1	10.5	12	0.2	12	16.5
-0.8	-2.0	-1.5	00	F03	-2.2
19.5	18.5	12	0.2	12	16.5

Finishing Stakes

-1.2	-2.0	F06	0	F04	-1.5
18	17	12	0.2	12	16.5
-0.9	-0.9	-2.9	-1.9	F05	00
19.1	19	18	10.5	12	12

New BM On Top 4'JP plump 30' L AL 208+20

00.5	-1.4	-1.8	F05	0	00
19.5	18.5	16.5	12	01	12
-1.1	-1.7	-1.8	F05	0	00
19	17.5	16.5	12	01	12
-1.6	-2.3	F09	0	F05	-1.8
19	16.5	12	00	12	16.5
-1.4	-1.4	-1.8	F03	0	F01.2
19.5	18.5	16.5	12	00	12
-1.6	-1.5	-1.8	F05	0	F07
19.5	18.5	16.5	12	02	12
-2.0	-2.0	-2.2	F05	0	F03
20	23	16.5	12	01	12
-0.8	-2.0	-1.9	F05	0	F02
22.5	21.8	10.5	12	01	12

New BM 5'JP 33'R AL 213+90

Page
11-12-13

July 20-1918. Circus Day
Curo and Mahlum
Hober. Check Clay

Point	BS+	HI	FS-	Elev	Grade
BM	5.22	102.43		97.21	
214			5.5		96.8
215			4.7		97.5
+50					
216			4.3		98.0
BM			4.26	98.17	
BM				98.14	

July 21-1918 Sunday

July 22-1918 Curo-mahlum
Guro
Hober work on Clay Checking

BM	4.63	102.77			
217			4.7		97.8"
218			4.6		98.0
219			4.4		98.2
+50			4.6		98.0
220			4.8		97.8
221			5.0		97.6
BM	3.50	102.32	3.95	98.82	
222			4.5		97.6
223			4.5		97.6
224			4.3		97.8
225			4.3		97.8
226			4.6		97.6

Finishing Stakes

Page
11-12-13

L	C	R
-26 21	-24 16.4	0 01
-17 20.5	-19 16.5	0 12
-16 18	-16 16.5	0 12
-15 18.5	-15 16.5	0 12
-14 19	-14 16.5	0 12
-13 19.5	-13 16.5	0 12
-12 20	-12 16.5	0 12
-11 20.5	-11 16.5	0 12
-10 21	-10 16.5	0 12
-9 21.5	-9 16.5	0 12
-8 22	-8 16.5	0 12
-7 22.5	-7 16.5	0 12
-6 23	-6 16.5	0 12
-5 23.5	-5 16.5	0 12
-4 24	-4 16.5	0 12
-3 24.5	-3 16.5	0 12
-2 25	-2 16.5	0 12
-1 25.5	-1 16.5	0 12
0 26	0 16.5	0 12
1 26.5	1 16.5	0 12
2 27	2 16.5	0 12
3 27.5	3 16.5	0 12
4 28	4 16.5	0 12
5 28.5	5 16.5	0 12
6 29	6 16.5	0 12
7 29.5	7 16.5	0 12
8 30	8 16.5	0 12
9 30.5	9 16.5	0 12
10 31	10 16.5	0 12
11 31.5	11 16.5	0 12
12 32	12 16.5	0 12
13 32.5	13 16.5	0 12
14 33	14 16.5	0 12
15 33.5	15 16.5	0 12
16 34	16 16.5	0 12
17 34.5	17 16.5	0 12
18 35	18 16.5	0 12
19 35.5	19 16.5	0 12
20 36	20 16.5	0 12
21 36.5	21 16.5	0 12
22 37	22 16.5	0 12
23 37.5	23 16.5	0 12
24 38	24 16.5	0 12
25 38.5	25 16.5	0 12
26 39	26 16.5	0 12
27 39.5	27 16.5	0 12
28 40	28 16.5	0 12
29 40.5	29 16.5	0 12
30 41	30 16.5	0 12
31 41.5	31 16.5	0 12
32 42	32 16.5	0 12
33 42.5	33 16.5	0 12
34 43	34 16.5	0 12
35 43.5	35 16.5	0 12
36 44	36 16.5	0 12
37 44.5	37 16.5	0 12
38 45	38 16.5	0 12
39 45.5	39 16.5	0 12
40 46	40 16.5	0 12
41 46.5	41 16.5	0 12
42 47	42 16.5	0 12
43 47.5	43 16.5	0 12
44 48	44 16.5	0 12
45 48.5	45 16.5	0 12
46 49	46 16.5	0 12
47 49.5	47 16.5	0 12
48 50	48 16.5	0 12
49 50.5	49 16.5	0 12
50 51	50 16.5	0 12
51 51.5	51 16.5	0 12
52 52	52 16.5	0 12
53 52.5	53 16.5	0 12
54 53	54 16.5	0 12
55 53.5	55 16.5	0 12
56 54	56 16.5	0 12
57 54.5	57 16.5	0 12
58 55	58 16.5	0 12
59 55.5	59 16.5	0 12
60 56	60 16.5	0 12
61 56.5	61 16.5	0 12
62 57	62 16.5	0 12
63 57.5	63 16.5	0 12
64 58	64 16.5	0 12
65 58.5	65 16.5	0 12
66 59	66 16.5	0 12
67 59.5	67 16.5	0 12
68 60	68 16.5	0 12
69 60.5	69 16.5	0 12
70 61	70 16.5	0 12
71 61.5	71 16.5	0 12
72 62	72 16.5	0 12
73 62.5	73 16.5	0 12
74 63	74 16.5	0 12
75 63.5	75 16.5	0 12
76 64	76 16.5	0 12
77 64.5	77 16.5	0 12
78 65	78 16.5	0 12
79 65.5	79 16.5	0 12
80 66	80 16.5	0 12
81 66.5	81 16.5	0 12
82 67	82 16.5	0 12
83 67.5	83 16.5	0 12
84 68	84 16.5	0 12
85 68.5	85 16.5	0 12
86 69	86 16.5	0 12
87 69.5	87 16.5	0 12
88 70	88 16.5	0 12
89 70.5	89 16.5	0 12
90 71	90 16.5	0 12
91 71.5	91 16.5	0 12
92 72	92 16.5	0 12
93 72.5	93 16.5	0 12
94 73	94 16.5	0 12
95 73.5	95 16.5	0 12
96 74	96 16.5	0 12
97 74.5	97 16.5	0 12
98 75	98 16.5	0 12
99 75.5	99 16.5	0 12
100 76	100 16.5	0 12
101 76.5	101 16.5	0 12
102 77	102 16.5	0 12
103 77.5	103 16.5	0 12
104 78	104 16.5	0 12
105 78.5	105 16.5	0 12
106 79	106 16.5	0 12
107 79.5	107 16.5	0 12
108 80	108 16.5	0 12
109 80.5	109 16.5	0 12
110 81	110 16.5	0 12
111 81.5	111 16.5	0 12
112 82	112 16.5	0 12
113 82.5	113 16.5	0 12
114 83	114 16.5	0 12
115 83.5	115 16.5	0 12
116 84	116 16.5	0 12
117 84.5	117 16.5	0 12
118 85	118 16.5	0 12
119 85.5	119 16.5	0 12
120 86	120 16.5	0 12
121 86.5	121 16.5	0 12
122 87	122 16.5	0 12
123 87.5	123 16.5	0 12
124 88	124 16.5	0 12
125 88.5	125 16.5	0 12
126 89	126 16.5	0 12
127 89.5	127 16.5	0 12
128 90	128 16.5	0 12
129 90.5	129 16.5	0 12
130 91	130 16.5	0 12
131 91.5	131 16.5	0 12
132 92	132 16.5	0 12
133 92.5	133 16.5	0 12
134 93	134 16.5	0 12
135 93.5	135 16.5	0 12
136 94	136 16.5	0 12
137 94.5	137 16.5	0 12
138 95	138 16.5	0 12
139 95.5	139 16.5	0 12
140 96	140 16.5	0 12
141 96.5	141 16.5	0 12
142 97	142 16.5	0 12
143 97.5	143 16.5	0 12
144 98	144 16.5	0 12
145 98.5	145 16.5	0 12
146 99	146 16.5	0 12
147 99.5	147 16.5	0 12
148 100	148 16.5	0 12
149 100.5	149 16.5	0 12
150 101	150 16.5	0 12
151 101.5	151 16.5	0 12
152 102	152 16.5	0 12
153 102.5	153 16.5	0 12
154 103	154 16.5	0 12
155 103.5	155 16.5	0 12
156 104	156 16.5	0 12
157 104.5	157 16.5	0 12
158 105	158 16.5	0 12
159 105.5	159 16.5	0 12
160 106	160 16.5	0 12
161 106.5	161 16.5	0 12
162 107	162 16.5	0 12
163 107.5	163 16.5	0 12
164 108	164 16.5	0 12
165 108.5	165 16.5	0 12
166 109	166 16.5	0 12
167 109.5	167 16.5	0 12
168 110	168 16.5	0 12
169 110.5	169 16.5	0 12
170 111	170 16.5	0 12
171 111.5	171 16.5	0 12
172 112	172 16.5	0 12
173 112.5	173 16.5	0 12
174 113	174 16.5	0 12
175 113.5	175 16.5	0 12
176 114	176 16.5	0 12
177 114.5	177 16.5	0 12
178 115	178 16.5	0 12
179 115.5	179 16.5	0 12
180 116	180 16.5	0 12
181 116.5	181 16.5	0 12
182 117	182 16.5	0 12
183 117.5	183 16.5	0 12
184 118	184 16.5	0 12
185 118.5	185 16.5	0 12
186 119	186 16.5	0 12
187 119.5	187 16.5	0 12
188 120	188 16.5	0 12
189 120.5	189 16.5	0 12
190 121	190 16.5	0 12
191 121.5	191 16.5	0 12
192 122	192 16.5	0 12
193 122.5	193 16.5	0 12
194 123	194 16.5	0 12
195 123.5	195 16.5	0 12
196 124	196 16.5	0 12
197 124.5	197 16.5	0 12
198 125	198 16.5	0 12
199 125.5	199 16.5	0 12
200 126	200 16.5	0 12
201 126.5	201 16.5	0 12
202 127	202 16.5	0 12
203 127.5	203 16.5	0 12
204 128	204 16.5	0 12
205 128.5	205 16.5	0 12
206 129	206 16.5	0 12
207 129.5	207 16.5	0 12
208 130	208 16.5	0 12
209 130.5	209 16.5	0 12
210 131	210 16.5	0 12
211 131.5	211 16.5	0 12
212 132	212 16.5	0 12
213 132.5	213 16.5	0 12
214 133	214 16.5	0 12
215 133.5	215 16.5	0 12
216 134	216 16.5	0 12
217 134.5	217 16.5	0 12
218 135	218 16.5	0 12
219 135.5	219 16.5	0 12
220 136	220 16.5	0 12
221 136.5	221 16.5	0 12
222 137	222 16.5	0 12
223 137.5	223 16.5	0 12
224 138	224 16.5	0 12
225 138.5	225 16.5	0 12
226 139	226 16.5	0 12
227 139.5	227 16.5	0 12
228 140	228 16.5	0 12
229 140.5	229 16.5	0 12
230 141	230 16.5	0 12
231 141.5	231 16.5	0 12
232 142	232 16.5	0 12
233 142.5	233 16.5	0 12
234 143	234 16.5	0 12
235 143.5	235 16.5	0 12
236 144	236 16.5	0 12
237 144.5	237 16.5	0 12
238 145	238 16.5	0 12
239 145.5	239 16.5	0 12
240 146	240 16.5	0 12
241 146.5	241 16.5	0 12
242 147	242 16.5	0 12
243 		

244
 245
 246
 247
 248
 249
 250
 251
 252
 253
 254
 255
 256
 257
 258
 259
 260
 261
 262
 263
 264
 265
 266
 267
 268
 269
 270

Page
13-14

July 22-
1918

Cross-Maklum - C Cross
Hobbeson Clay Canyon

Point	BS +	HI	FS -	Elev	Grade
B.M.	3.26	101.12	4.46	97.86	
227			3.8	97.2	
228			3.8	97.2	
+80			3.8	97.2	
229			4.2	96.7	
230			6.8	94.3	
B.M. T.P.			3.79	97.33	

Note Pg 14 and 14^{and 15} Cross Section Clay pit
Mott's Book No 25 July 22-1918
and Copied in My Book Pg 24 T. 31
Book No — C.C.

Finishing Stakes

Page 13-
14

galled
Bridgely
Ground

L. I. R

New B.M. = 5" J.P. 33' L 26 226 + 10

3.9	$\frac{-0.8}{19.2}$	$\frac{-1.5}{16.5}$	$\frac{F0.5}{12}$	$\frac{0}{0.1}$	$\frac{F0.1}{12}$	$\frac{-1.3}{16.5}$	$\frac{-1.3}{18.7}$	$\frac{-0.3}{18.0}$
3.9	$\frac{-0.3}{18.3}$	$\frac{-1.2}{16.5}$	$\frac{F0.1}{12}$	$\frac{0}{0.1}$	$\frac{0.1}{12}$	$\frac{-1.3}{16.5}$	$\frac{-1.4}{19}$	$\frac{-1.0}{20}$
3.9	$\frac{0.6}{19.5}$	$\frac{-0.9}{19}$	$\frac{-1.0}{16.5}$	$\frac{0.0}{12}$	$\frac{0}{0.1}$	$\frac{F0.3}{12}$	$\frac{-1.3}{16.5}$	$\frac{-1.3}{19}$
4.4	$\frac{0.4}{19.4}$	$\frac{-1.0}{19.0}$	$\frac{-0.9}{16.5}$	$\frac{F0.1}{12}$	$\frac{0}{0.2}$	$\frac{F0.1}{12}$	$\frac{-1.4}{16.5}$	$\frac{-1.4}{19.2}$
6.8	$\frac{0.0}{19}$	$\frac{-1.5}{18.5}$	$\frac{-1.5}{16.5}$	$\frac{F0.6}{12}$	$\frac{0}{0.0}$	$\frac{F0.6}{12}$	$\frac{-1.7}{16.5}$	$\frac{-1.5}{18}$

New B.M. on top 4" J.P. 35' R No 229 + 80

-19

July 26-1918 Curo
Hohen

Point	BS+	HI	FS-	Elev	Grade
BM	1.36	95.83		94.47	
320			2.6	^{93.0} 93.5	
321			4.0	^{91.8} 91.5	
32+55			5.0	^{90.5} 90.5	
322			5.6	^{90.4} 89.6	
322+30				[?] ?	
323			5.2	^{90.4} 89.4	
BM T.P.	5.62	100.22	1.25	94.60	
+65					
+83			8.7	^{90.6} 90.6	
324			8.2	^{92.0} 91.0	
+15			8.0	^{91.3} 91.3	
+56			7.2	^{92.1} 92.1	
325			6.8	^{93.7} 93.0	
+50			5.9	^{94.8} 94.8	
326			4.8	^{95.5} 95.5	
327			3.1	^{97.0} 97.0	
BM		0.27		99.95	

Finishing Stakes

24180
On Bank
of
stream

L

C

R

old BM 80' L S 1/2 320+40 = 12" stump

2.3	$\frac{0.4}{19.4}$	$\frac{-1.7}{18}$	$\frac{F0.6}{12}$	$\frac{F0.3}{10}$	$\frac{F}{0.3}$	$\frac{F0.3}{10}$	$\frac{F0.3}{12}$	$\frac{-1.7}{19}$	$\frac{0.4}{19.4}$
4.3	$\frac{0.6}{20.6}$	$\frac{-0.9}{17}$	$\frac{0.4}{12}$	$\frac{0.5}{10}$	$\frac{0}{0.3}$	$\frac{0.3}{10}$	$\frac{0.2}{12}$	$\frac{-0.1}{18.4}$	$\frac{0.6}{20}$
5.3	$\frac{0.0}{19}$	$\frac{-1.2}{18.7}$	$\frac{0.4}{12}$	$\frac{0.5}{10}$	$\frac{0}{0.3}$	$\frac{0.5}{10}$	$\frac{0.4}{12}$	$\frac{-1.1}{18}$	$\frac{0.0}{19}$
6.2	$\frac{-0.8}{17}$	$\frac{0.4}{12}$	$\frac{0.1}{10}$	$\frac{0}{0.6}$	$\frac{0.9}{10}$	$\frac{0.3}{12}$			$\frac{-0.8}{17.2}$

6.4	$\frac{-3.6}{20}$	$\frac{0.1}{10}$	$\frac{0}{12}$	$\frac{0.1}{10}$	$\frac{0.9}{12}$			$\frac{-3.5}{20}$
-----	-------------------	------------------	----------------	------------------	------------------	--	--	-------------------

On top 4" JP stump 35' L S 1/2

9.6	Meadow Hill	$\frac{0.5}{12}$	$\frac{0.9}{10}$	$\frac{0}{0.9}$	$\frac{0.8}{10}$	$\frac{0.7}{12}$		$\frac{0.0}{19}$	
9.2	$\frac{-1.7}{20}$	$\frac{-0.7}{10.5}$	$\frac{0.5}{12}$	$\frac{0.9}{10}$	$\frac{0}{10}$	$\frac{0.9}{10}$	$\frac{0.7}{12}$	$\frac{0.4}{16.7}$	$\frac{0.2}{21.3}$
8.9	$\frac{0.0}{19}$	$\frac{-0.6}{10.5}$	$\frac{0.6}{12}$	$\frac{0.9}{10}$	$\frac{0}{0.9}$	$\frac{0.9}{10}$	$\frac{0.7}{12}$	$\frac{-0.6}{16.5}$	$\frac{0.4}{23}$
8.1	$\frac{0.4}{23.4}$	$\frac{0.6}{18}$	$\frac{0.6}{12}$	$\frac{0.7}{10}$	$\frac{0}{0.9}$	$\frac{0.7}{10}$	$\frac{0.6}{12}$	$\frac{-0.2}{18.6}$	$\frac{0.5}{24.1}$
7.2	$\frac{0.3}{22.1}$	$\frac{-0.8}{18.6}$	$\frac{0.9}{12}$	$\frac{0.4}{10}$	$\frac{0}{0.4}$	$\frac{0.6}{10}$	$\frac{0.6}{12}$	$\frac{-0.4}{18.6}$	$\frac{0.3}{22.4}$
5.4	$\frac{0.0}{19}$	$\frac{-2.3}{17.5}$	$\frac{F1.2}{12}$	$\frac{0.5}{10}$	$\frac{0}{0.5}$	$\frac{0.5}{10}$	$\frac{F0.5}{12}$	$\frac{-1.9}{18.3}$	$\frac{0.9}{20}$

4.7	$\frac{0.2}{19.2}$	$\frac{-1.6}{17.8}$	$\frac{F0.3}{12}$	$\frac{F0.1}{10}$	$\frac{F}{0.1}$	$\frac{F0.1}{12}$	$\frac{-1.4}{19}$		$\frac{0.6}{19.6}$
3.2	$\frac{0.0}{19}$	$\frac{-1.5}{18}$	$\frac{F0.4}{12}$	$\frac{0.1}{10}$	$\frac{0}{0.1}$	$\frac{0.0}{10}$	$\frac{F0.6}{12}$	$\frac{-1.8}{18.6}$	$\frac{0.4}{19.4}$

On top 4" Oak stump 35' R S 1/2 327+95

July 27-1918 Saturday
Cuyo
Haber

Point	BS+	HI	FS-	Elev	Grade	gd rd.
BM	3.51	98.16		94.65		
310 To 314 inclusive						
315				94.8	3.4	
316				94.0	4.2	
317				94.0	7.2	
318				94.0	4.2	
319				93.8	4.4	
BM	1.40	95.87		94.47		
320				93.0	2.9	
321				91.8	4.1	
322				90.4	5.5	
323				90.4	5.5	
324				92.0	3.9	
325				93.7	2.2	
326						
327						

Finishing stakes
Change Grade

L L R

{ OK. Not Changed See page 16.

$\frac{3.4}{12}$	$\frac{3.4}{12}$
$\frac{4.2}{12}$	$\frac{4.2}{12}$
$\frac{4.2}{12}$	$\frac{4.2}{12}$
$\frac{4.2}{12}$	$\frac{4.2}{12}$
$\frac{4.4}{12}$	$\frac{4.4}{12}$
$\frac{2.9}{12}$	$\frac{2.9}{12}$
$\frac{4.1}{12}$	$\frac{4.1}{12}$
$\frac{5.5}{12}$	$\frac{5.5}{12}$
$\frac{5.5}{12}$	$\frac{5.5}{12}$
$\frac{3.9}{12}$	$\frac{3.9}{12}$
$\frac{2.2}{12}$	$\frac{2.2}{12}$

OK. Not Changed See Page 19.

21.22
23

July 31-1918
Curo
Hober

Point	BS+	HI	FS-	Elev	Grade
BM	4.67	102.53		97.86	
303			4.2	97.8	
304			4.3	97.8	
305			4.6	97.8	
306			4.6	97.8	
307			4.4	97.8	
308			4.6	97.8	
309			4.9		

Aug 1-1918 Curo
Hober

BM	4.10	102.23		98.13	
294			4.5	97.5	
295			4.6	97.0	
296			4.6	97.0	
297			4.7	97.0	
298			4.8	97.0	
T.P.	3.93	100.94	5.22	97.01	
299			3.7	97.0	
300			4.4	96.5	
301			5.1	95.7	
302			5.7	95.0	
298. H			5.9	95.0	
299 H			5.9	95.0	

Finishing Stakes

21
22
23

grade
Rod

L. E R

33' R Sta 306+30 = 6" J.P.

4.7	2.1	-1.5	F0.3	0.1	0	0.1	0.0	-1.2	C1.5
4.5	2.4	1.9	12	10	0.3	10	12	1.9	22.5
4.7	-0.6	-1.8	F0.1	0.1	0	0.1	F0.2	-1.9	0.5
4.5	20.5	1.9	12	10	0.2	10	12	1.9	2.0
4.7	-1.0	-1.8	0.1	0.0	0	0.0	F0.1	-1.9	-1.2
	19.5	1.9	12	10	0.1	10	12	1.9	19.8
4.7	-1.0	-1.9	F0.2	0.0	0	0.1	F0.2	-1.9	-1.0
	20.5	2.0	12	10	0.1	10	12	1.9	2.0
4.7	-0.5	-1.8	F0.1	0.0	0	F0.1	F0.3	-1.8	-0.5
4.5	2.0	1.9	12	10	0.1	10	12	1.9	2.0
4.7	-0.1	-1.5	0.0	0.0	0	0.0	0.0	-1.4	0.0
	19.3	1.9	12	10	0.1	10	12	2.0	20.5
5.0	-0.2	-1.5	0.0	0.0	0	0.0	0.0	-1.5	-0.3
	19.5	18.5	12	10	0.1	10	12	1.9	19.5

60' L Sta 296+90 = 6" J.P.

4.7	0.0	-1.6	0.0	0.0	0	0.0	F0.2	-1.6	0.0
	2.0	1.8	12	10	0.2	10	12	1.8	2.0
5.2	-0.2	-1.5	F0.3	0.2	0	0.2	F0.4	-1.6	-0.4
	2.0	19.4	12	10	0.6	10	12	20.4	20.6
5.2	-0.7	-1.7	F0.3	0.0	0	0.0	F0.4	-1.9	-1.6
	20.5	20.2	12	10	0.6	10	12	2.1	21.2
5.2	0.0	-1.4	0.2	0	0	0.2	0.2	-1.6	0.0
	2.0	19.7	10	0.5	10	12	1.8	2.0	2.0
5.2	0.3	-1.5	0.0	0.0	0	0.2	0.0	-1.4	0.3
	19.3	1.9	12	10	0.4	10	12	1.9	20.3
3.9	-0.6	-1.9	F0.2	0.0	0	0.0	F0.3	-1.4	-0.6
	19.6	19.4	12	10	0.2	10	12	1.9	19.6
4.4	-0.7	-2.3	F0.2	0.0	0	0.0	F0.2	-2.2	-0.7
	19.7	19.4	12	10	0.9	10	12	20.4	20.6
5.2	-1.0	-2.3	F0.4	F0.2	0	0.0	0.0	-2.0	-0.2
	22.5	22.3	12	10	0.1	10	12	2.5	22.0
5.9	0.0	-1.5	0.0	0.1	0	0.0	F0.1	-1.6	-0.3
	20.5	2.0	12	10	0.2	10	12	2.1	22.0
5.9	-0.1	-1.5	0.0	0.0	0	0.0	F0.3	-2.0	-0.5
	19.5	19.3	12	10	1.0	10	12	22.0	22.3
5.9	-0.7	-2.0	F0.4	0.0	0	0.0	0.0	-1.8	0.0
	2.0	19.5	12	10	1.0	10	12	22.5	22.8

23 Aug 1
24 1918
25

Cisco
Hoben

Point	BS+	HI	FS-	Elev	Grade
TP	6.75	101.81	5.88	95.06	
300 H			6.2	95.5	
301 H			5.0	96.8 96.6	
302 H			4.0	97.8	
303			4.0	97.8	

Aug 2-1918

Cisco
Hoben

BM 3.40 102.83 99.43

278		4.3	98.5	
279		4.5	98.2	
280		4.6	98.1	
281		4.3	98.5	
TP	5.68	104.24	4.27	98.56
282		4.7	99.5	
283		4.2	100.	
284		5.2	99.0	
285		6.4	98.0	
286		7.4	97.0	
TP		7.20		

Finishing Stakes

23
24
25

L S R

-1.2	-2.4	00	0	00	00	-1.7	-0.4	Pull up
20	19.5	10	0.1	10	12	20.5	21	0.4
-0.3	-1.6	00	0	00	-1.5	0.8		Pull up
20	19.5	12	0.2	10	20	20.7		0.2
00	-1.6	00	0	00	-1.5	0.13		
20.2	20	12	00	12	18	20.3		

Check O.K. 00 00 O.K.

Finishing Stakes

3" DP 33' R S 1/2 277+50

4.3	0.03	-1.6	-1.4	F0.1	00	00	00	F0.1	-1.4	-1.4	00
	21	18.5	16.5	12	10	0	10	12	16.5	20.5	21
4.6	-1.0	-1.2	-1.6	F0.3	00	0	00	F0.1	-1.3	-1.7	-0.5
	19	18	16.5	12	10	0.1	10	12	17	20	20.5
4.7	-1.0	-1.9	-1.8	F0.3	00	0	0.1	0.03	-0.7	-1.3	00
	20.6	20.5	16.5	12	10	0.1	10	12	16.5	20.5	21
4.3	-1.6	-2.7	-1.7	F0.4	0	0.1	F0.1	-1.3	-1.5	-0.2	
	20	19	16.5	12	00	10	12	16.5	19.5	20.5	
4.7	-0.6	-1.8	-1.5	F0.1	00	0	00	-1.3	-1.4	00	
	20.5	18.5	16.5	12	10	00	12	16.5	19	21	
4.2	0.12	-1.5	-1.0	00	0	00	-1.3	-1.3	0.14		
	20.2	16.5	15	12	00	12	15	18	20.4		
5.2	0.33	-1.5	-1.4	-1.0	00	0	00	-1.5	-1.7	-0.9	
	26.5	22	19	16.5	12	00	12	15	19	21.5	
6.2	-0.8	-2.3	-1.9	F0.2	F0.2	F0.4	-2.3	-1.8	-1.0		
	24	20	17	12	12	16.5	19	22			

Marsh here F0.2 F0.2 Marsh here

On grade Peg 12' Shoal Lake

27-28

Aug 5-1918

Monday

Cuss
Hohen

Cross Sections

27
28Point BS+ HI FS- Elev Gradi² Rod

L R R

B.M. 7.79 100.00 92.27

B.M. 4.28 98.81 5.53 94.53

379 5.9 93.5 5.3

+10 4.7 93.5 5.3

+70 4.0 93.5 5.3

380 4.7 93.5 5.3

381 5.7 92.8 6.0

TP 7.67 97.43 9.05 89.76

7.42 90.01

382 2.0 91.3 7.1

383 4.4 89.5 7.9

Be
+47.3

TP 2.11 95.32

New B.M. 25' R S 1/4 378+55 = Oak 4"

$$\frac{-5.0}{25} \quad \frac{F2.2 \ 0.0}{15.3 \ 5} \quad \frac{F0.6 \ F}{2 \ 0.6} \quad \frac{F0.6 \ 0.0}{3 \ 5} \quad \frac{F3.3}{17.0} \quad \frac{-5.4}{25}$$

0.6

$$\frac{-1.9}{25} \quad \frac{0.0}{19} \quad \frac{0.15}{10} \quad \frac{0.08}{8} \quad \frac{0.08}{3} \quad \frac{0}{1.3} \quad \frac{0.0}{6} \quad \frac{F4.0}{18}$$

$$\frac{-1.6}{25} \quad \frac{0.0}{19} \quad \frac{0.11}{10} \quad \frac{0.0}{7} \quad \frac{0.0}{2} \quad \frac{0}{0.6} \quad \frac{0.0}{3} \quad \frac{F6.2}{21.3} \quad \frac{-7.5}{25}$$

$$\frac{-3.3}{25} \quad \frac{F1.4 \ 0.0}{14.1 \ 9} \quad \frac{0.13}{2} \quad \frac{0}{0.3} \quad \frac{0.00}{3} \quad \frac{F5.2}{19.8} \quad \frac{-6.4}{25}$$

On root of 15° NP 25' R Sta 381+25

On old B.M. 40' L S 1/4 382+15 E1-90.01. O.K.

$$\frac{0.3}{30} \quad \frac{0.19}{25} \quad \frac{0.25}{21.5} \quad \frac{0.45}{11} \quad \frac{0.42}{9} \quad \frac{0.42}{4} \quad \frac{0}{5.1} \quad \frac{0.49}{7} \quad \frac{0.0}{19} \quad \frac{-2.7}{25}$$

$$\frac{-2.7}{25} \quad \frac{0.0}{15} \quad \frac{0}{3.5} \quad \frac{0.43}{3} \quad \frac{0.43}{8} \quad \frac{0.48}{10} \quad \frac{0.46}{17} \quad \frac{0.24}{21.6} \quad \frac{0.7}{25}$$

4" Basswood Sump 33' R S 1/4 383+50.

31 Aug 7-1918
32 Wed.

JW Curo
Garold Curo
Mot/ helped Here

Point BS+ HI FS- Elev Grade

BM 1.64 96.96 95.32

383 89.5

383+473 BC. 88.7

383+87 87.9

384 87.7

384+26 87.5

384+62 87.0

385. 86.5

TP 1.91 88.62 10.25 86.71

385+47 86.0

385+50 5.6 86.0

386 4.6 86.0

387 5.4 86.0

388 4.8 86.0

TP 3.60 85.02

Cross Sections

31
32

L Q R

On lip

F38 F10 00 C C3.6 C5.2 C4.0 C4.0 C6.3 C5.5 C4.6
25 13.5 11 3.0 3 6 8.73 15.5 24.5 33

8.3

F42 F30 00 0 C3.8 C2.8 C2.8 C7.3 C7.4 C5.8
25 16.5 5 18 8 11 16 23.5 24 33

9.0

F40 F37 F 00 C2.5 C1.3 C1.2 C3.3 C4.2
25 17.6 10 4 12 16 20.2 24 28

9.5

F45 F40 F F1.8 F1.4 00 00 00 00 C2.6 C5.0 C8.1
25 18 3.1 11 14.1 17 19 24 33 37 50

10.0

F35 F35 F3.3 F3.1 F1.0 F1.0
25 17.2 10.6 24 30

10.5

On lip 4" Oak 40' R. S/6 385+25

Q stake

F20 F24 F29 F F25 F2.0 F2.0
33 25 16.4 3.0 15.7 25 33

2.6

same out F14 F1.7 F F2.4 F2.2 F0.9
25 14.6 2.0 15.6 25 33

2.6

F34 F3.0 F F2.0 F1.8 F1.4
25 16.5 2.8 15.0 25 33

2.6

F40 F3.8 F F3.1 F3.1
25 17.7 2.2 10.7 25

2.6

On lip of 4" Birch Stump 35R S/6 388+10

33
34Aug 8-1918 JWCuro
Thursday Gerald Curo

Point	BS-	HI	FS-	Elev	Grade
278					98.5
BM	4.32	103.75		99.43	
277			5.0	Raise 0.2 98.7	98.5
276			4.9	Raise 0.3 98.8	98.5
275			4.6	Lower 0.3 99.2	99.5
274+50			4.2	Raise Grade 0.5	100.0
274			4.2	Raise grade 0.4	99.1
TP	4.77	103.95	4.57	99.18	
273			4.8		99.2
272			4.7		99.3
271			4.5		99.4
BM			3.81	100.14	
270			4.0	Raise 0.4 To 99.9	99.5
269			4.0		100.0

Run Backwards

Finishing Stakes

33
34od
Road

L E R

3" JP 33'R S¹/₂ 277+50

5.2	-0.4 19.5	-1.7 19	-1.5 16.5	0.2 12	0	0.2 12	-1.0 16.5	-1.1 19	0.0 19.5
5.2	-0.7 19.5	-1.6 19	-1.5 16.5	0.3 12	0	0.3 12	-1.3 16.5	-1.4 18.8	-0.7 19.2
4.2	0.3 19.3	-1.6 18	-1.5 16.5	FOY 12	F	FOY 12	-1.5 16.5	-1.4 18.5	0.07 19.7
3.7	0.7 19.7	-1.4 19.0	-1.6 16.5	FOY 12	F	FOY 12	-1.6 16.5	-1.5 19	0.3 22.0
4.6	0.5 19.5	-1.5 19	-1.3 16.5	0.4 12	0	0.4 12	-0.9 16.5	-1.1 19	0.18 20.9

On lip of 3" JP Stk 35'R S¹/₂ 273+50

4.8	Low Land	0.0 12	0.0 12	0.0 12	0.0 12	0.0 12	0.0 12	0.0 12	0.0 12
4.7	FOY 19	-1.6 18	-1.3 16.5	0.0 12	0.0 12	0.0 12	-1.6 16.5	-1.6 17.5	FOY 19
4.6	-0.5 19	-1.7 18	-1.6 16.5	0.0 12	0.0 12	0.0 12	-1.6 16.5	-1.5 18	-1.3 19

Check on old BM 6" JP 33'R S¹/₂ 270+90 E

4.4	0.0 19.2	-1.5 19	-1.1 16.5	0.0 12	0	0.4 12	-1.3 16.5	-1.3 19	0.0 19.5
4.0	-0.5 19	-1.5 18.5	-1.9 16.5	0.0 12	0.0 12	0.0 12	-1.4 16.5	-1.5 19	0.08 19.8

35
36Aug 9th 1918 John W Curo
Friday Gerald W Curo

Point	BS+	HI	FS-	Elev	Grade
BM.	4.29	104.43		100.14	
269				100.0	
268+50			4.6	99.8	
268			4.9	99.5	
267			5.4	99.0	
266+50			5.3	Rain 0.2 to 99.0	98.8

TP 2.48 102.94 3.97 100.46

266 4.0 Rain 0.4
to 98.9 98.5

265 4.4 98.5

264 4.4 98.5

TP 3.45 103.63 2.76 100.18

263 5.1 98.5

262 5.1 98.5

261+50 5.1 98.5

261 5.1 98.5

260 5.1 98.5

BM. 4.62 99.01

BM. 332 102.54 99.22

259 3.8 98.5

258 4.2 98.5

257 4.0 98.5

256 3.7 Rain 0.2
to 99.0 98.8

Run Backwards

Finishing Stakes

35
36

6" JP 33' R S 1/2 270+90

64 Rd	L	E	R
4.6	0.0 19.2	-1.5 19.1	-1.4 16.5
4.9	0.0 19.2	-1.5 19.1	-1.3 16.5
4.5	0.0 20.5	-1.7 19.1	-1.6 16.5
5.6	0.3 2.0	-1.5 19.1	-1.4 16.5

on lip of 3" JP Stump 40' R S 1/2 266+90

4.4	4.4	4.4
0.0 2.0	-1.0 19.1	-0.8 16.5
-1.8 2.0	-2.1 19.1	-2.2 16.5
-4.6 2.0	0.0 12	0.0 12

On lip 2" JP Stump 40' R S 1/2 263+60

5.1	5.1	5.1	5.1	5.1
-0.1 2.0	-1.7 19.1	-1.2 16.5	0.0 12	0.0 12
0.7 19.7	-1.3 18.5	-1.0 16.5	0.0 12	0.0 12
0.3 22.0	-1.3 18.0	-1.1 16.5	0.0 12	0.0 12
0.18 20.8	-1.4 18.0	-1.4 16.5	0.0 12	0.0 12
0.03 19.3	-1.4 19.1	-1.5 16.5	0.0 12	0.0 12

On old BM=12" WP 25' R S 1/2 260+10 EI=99.22

4.0	4.0	4.0	4.0	4.0
0.0 19.5	-1.5 19.1	-1.1 16.5	0.0 12	0.0 12
-0.3 20.5	-2.0 20.0	-1.5 16.5	0.0 12	0.0 12
-0.8 21.0	-2.0 20.5	-1.7 16.5	0.0 12	0.0 12
-0.4 20.5	-1.7 20.0	-0.9 16.5	0.0 12	0.0 12

37
38Aug 9-1918 JWCoro
Friday GW Coro

Point	BST	HI	FS-	Elev	Grade
255+50		102.54	3.3	Raise 0.2 To 99.2	99.0
255			3.0	Raise 0.5 To 99.5	99.0

Aug 10-1918 JWCoro
GW Coro

BM	3.60	103.75		100.15	
254			4.0	Raise 0.8 To 99.8	99.0
253+20					
253			4.5	Raise 0.3 To 99.3	99.0
252			5.0	Raise 0.8 To 98.8	98.0
251			5.4	Raise 0.4 To 98.4	98.0

Set shoulder stake in PM

Aug 11-1918 Sunday

Aug 12-1918 Monday
Rain Work in office

Run Backwards

37
38

Finishing Slakes

6d Rd	L	P	R	
3.5	0.0 19.5	-1.4 19.1	-1.0 16.5	0.2 12
3.5	0.0 19.5	-1.1 17	-1.0 16.5	0.2 12

6" J.R. 30' R S 1/2 254+50

4.8	0.29 21.9	-0.4 19	-0.4 16.5	0.8 12
4.8	0.0 19	-0.4 20.5	-0.8 16.5	0.8 12
5.8	0.2 21	-1.0 20.5	-0.6 16.5	0.8 12
5.8	0.3 19.3	-1.1 19	-1.0 16.5	0.4 12

Aug 13 - 1911 J. W. Lewis & T. B. Caldwell
Tuesday Gerald Caldwell Roday ch
Lewis E Montgomery & rc

Point	BS +	HI	FS -	Elev	Grade
BM	4.65	103.47		98.82	
251			5.07	98.40	
250	0.15 98.4		5.07	98.4 Rain 0.4 To 98.4	98.0
249	98.5		5.3	98.5 up 0.3 To	98.2
248	98.6		4.7	98.6 up 0.2 To	98.4
247+50	98.7		4.4	98.7 up 0.2 To	98.5
247	98.3		4.7	98.3 up 0.3 To	98.0
246	97.3		6.3	97.3 up 0.3 To	97.0
245	96.3		7.5	96.3 up 0.2 To	96.0
244	95.3		8.2		95.0
BM	2.96	98.19		95.23	
244			2.89	95.30	
243	up 1.2 To 95.2		3.00		94.0
242	up 1.4 To 94.4		3.8		93.0
241	up 0.6 To 93.6				93.0
240	up 0.5 To 93.5		4.7		93.0
239	up 0.4 To 93.4		4.8		93.0
238	up 1.3 To 95.3				92.0

Run Backwards

Finishing Stakes

6" JP 25' 17 5 1/2"

Check on Shoulder Stakes OK.

5.5	$\frac{0.2}{19.2}$	$\frac{-1.3}{19.}$	$\frac{-0.8}{16.5}$	$\frac{0.4}{12}$	$\frac{0.4}{12}$	$\frac{-0.8}{16.5}$	$\frac{-1.3}{19.}$	$\frac{0.2}{19.2}$
5.3	$\frac{-0.7}{19.5}$	$\frac{-1.7}{19.}$	$\frac{-1.0}{16.5}$	$\frac{0.0}{12}$	$\frac{0.0}{12}$	$\frac{-1.4}{16.5}$	$\frac{-1.5}{19.}$	$\frac{-0.8}{19.5}$
5.1	$\frac{0.14}{20.4}$	$\frac{-1.0}{19.}$	$\frac{-0.9}{16.5}$	$\frac{0.4}{12}$	$\frac{0.4}{12}$	$\frac{-0.9}{16.5}$	$\frac{-1.2}{19.}$	$\frac{0.12}{20.2}$
5.0	$\frac{0.18}{20.8}$	$\frac{-0.7}{19.}$	$\frac{-0.5}{16.5}$	$\frac{0.0}{12}$	$\frac{0.6}{12}$	$\frac{-0.5}{16.5}$	$\frac{-0.6}{19.}$	$\frac{0.10}{20.}$
5.5	$\frac{0.07}{19.7}$	$\frac{-0.8}{19.}$	$\frac{-0.6}{16.5}$	$\frac{0.0}{12}$	$\frac{0.8}{12}$	$\frac{-0.6}{16.5}$	$\frac{-0.8}{19.}$	$\frac{0.17}{20.7}$
6.5	$\frac{0.0}{19.5}$	$\frac{-1.5}{19.}$	$\frac{-1.3}{16.5}$	$\frac{0.0}{12}$	$\frac{0.2}{12}$	$\frac{-1.1}{16.5}$	$\frac{-1.5}{19.}$	$\frac{0.0}{19.5}$
7.5	$\frac{-1.3}{19.5}$	$\frac{-2.1}{19.}$	$\frac{-1.5}{16.5}$	$\frac{0.0}{12}$	$\frac{0.0}{12}$	$\frac{-2.2}{16.5}$	$\frac{-2.6}{19.}$	$\frac{-2.0}{20.}$
8.5	$\frac{-0.2}{19.5}$	$\frac{-1.5}{19.}$	$\frac{-1.3}{16.5}$	$\frac{0.3}{12}$	$\frac{0.3}{12}$	$\frac{-1.3}{16.5}$	$\frac{-1.5}{19.}$	$\frac{-0.2}{19.5}$

Check On Shoulder Stakes O.K.

4.2	$\frac{0.07}{19.7}$	$\frac{-0.6}{19}$	$\frac{-0.3}{16.5}$	$\frac{0.12}{12}$	$\frac{0}{1.2}$	$\frac{0.12}{12}$	$\frac{-0.2}{16.5}$	$\frac{-0.4}{19}$	$\frac{0.9}{19.8}$
5.2	$\frac{0.16}{20.6}$	$\frac{-0.3}{19}$	$\frac{-0.2}{16.5}$	$\frac{0.14}{12}$	$\frac{0}{1.4}$	$\frac{0.14}{12}$	$\frac{-0.3}{16.5}$	$\frac{-0.3}{19}$	$\frac{0.9}{19.9}$
5.2	$\frac{0.05}{19.5}$	$\frac{-1.3}{19}$	$\frac{-0.8}{16.5}$	$\frac{0.06}{12}$	$\frac{0}{0.6}$	$\frac{0.06}{12}$	$\frac{-0.8}{16.5}$	$\frac{-0.4}{19}$	$\frac{-0.3}{19.5}$
5.2	$\frac{-0.6}{19.5}$	$\frac{-1.5}{19}$	$\frac{-1.1}{16.5}$	$\frac{0.05}{12}$	$\frac{0}{0.5}$	$\frac{0.05}{12}$	$\frac{-1.1}{16.5}$	$\frac{-1.7}{19}$	$\frac{-0.6}{19.5}$
5.2	$\frac{0.12}{20.2}$	$\frac{-1.2}{19}$	$\frac{-0.8}{16.5}$	$\frac{0.04}{12}$	$\frac{0}{0.4}$	$\frac{0.04}{12}$	$\frac{-0.9}{16.5}$	$\frac{-1.1}{19}$	$\frac{0.15}{20.5}$

Aug 14 - 1918 Jw curio
weld G curio
Montgomery

Point	BS+	HI	FS-	Elev	Grade
Bm	420	95.92		91.72	
238	up 1.3 to 93.3	OK.	2.6	93.3	92.0
237	up 0.8 to 91.8		4.1		91.0
236+50	Rod Reads 4.8 for finished grade				
236	up 0.3 to 90.3		5.6		90.0
235	up 0.7 to 98.7		6.4		89.0
234+50	Rod reads 6.5 for finished grade				
234	OK.				89.0
Bm.	230	94.02		91.72	
233			5.4		89.0
+50 ?					
232			4.2		89.5
231+70			3.7		90.0
231			2.1		91.5
230	Close OK.				

Run Backwards Finishing Stakes

2 nd Rod	L C R											
	8" J.P. 40' L S/L 235.											
3.9	$\frac{0.7}{19.7}$	$-\frac{0.3}{19}$	$\frac{0.0}{16.5}$	$\frac{0.13}{12}$	$\frac{0}{11.3}$	$\frac{0.13}{12}$	$\frac{0.0}{16.5}$	$-\frac{0.2}{19}$		$\frac{0.10}{20}$		
4.9	$\frac{0.12}{20.2}$	$-\frac{0.6}{19}$	$-\frac{0.4}{16.5}$	$\frac{0.08}{12}$	$\frac{0}{0.8}$	$\frac{0.08}{12}$	$-\frac{1.4}{16.5}$	$-\frac{0.6}{19}$		$\frac{0.08}{19.8}$		
5.9	$-\frac{0.3}{19.5}$	$-\frac{1.5}{19}$	$-\frac{1.2}{16.5}$	$\frac{F0.2}{12}$	$\frac{0.03}{10}$	$\frac{0}{0.3}$	$\frac{0.03}{10}$	$\frac{F0.1}{12}$	$-\frac{1.7}{16.5}$	$-\frac{1.5}{18}$	$-\frac{0.3}{19.5}$	
6.9	$\frac{0.02}{19.2}$	$-\frac{0.8}{19}$	$-\frac{0.6}{16.5}$	$\frac{0.05}{12}$	$\frac{0}{0.5}$	$\frac{0.05}{10}$	$\frac{0.0}{12}$	$-\frac{1.2}{16.5}$	$-\frac{1.2}{19}$	$\frac{0.04}{19.4}$		
6.9	$-\frac{1.1}{21.5}$	$-\frac{1.9}{21}$	$-\frac{1.5}{17}$	$\frac{0.0}{12}$	$\frac{0}{0.0}$	$\frac{0.00}{10}$	$\frac{F0.3}{12}$	$-\frac{1.6}{16.5}$	$-\frac{2.1}{19}$	$-\frac{0.5}{19.5}$		
5.0	$-\frac{2.7}{21}$	$-\frac{3.5}{20}$	$\frac{F0.5}{12}$	$\frac{F0.4}{10}$	$\frac{0}{0.4}$	$\frac{F0.4}{10}$	$\frac{F0.5}{12}$	$-\frac{2.8}{19.0}$	$-\frac{2.1}{20}$			
4.5	$-\frac{1.1}{19.5}$	$-\frac{1.6}{19}$	$-\frac{1.2}{16.5}$	$\frac{0.0}{12}$	$\frac{0.02}{10}$	$\frac{0}{0.3}$	$\frac{0.01}{10}$	$\frac{0.0}{12}$	$-\frac{1.2}{16.5}$	$-\frac{1.4}{19}$	$\frac{0.06}{19.6}$	
4.0	$\frac{0.8}{19.5}$	$-\frac{1.5}{19}$	$-\frac{1.2}{16.5}$	$\frac{0.03}{12}$	$\frac{0}{0.3}$	$\frac{0.03}{12}$	$-\frac{1.5}{16.5}$	$-\frac{1.8}{19}$		$\frac{0.15}{20.5}$		
2.5	$\frac{F0.1}{19.5}$	$-\frac{1.4}{19}$	$-\frac{1.0}{16.5}$	$\frac{0.0}{12}$	$\frac{0.05}{10}$	$\frac{0}{0.4}$	$\frac{0.03}{10}$	$\frac{0.0}{12}$	$-\frac{0.7}{16.5}$	$-\frac{0.9}{18}$	$\frac{0.14}{20.4}$	

43

Aug 15-1918
ThursCairo
Montgomery
& Cairo

Point	BS+	HI	FS-	Elev	Grade
B.M.	6.68	97.88		96.20	
331					
+ ?					
+ ?	Note				
+ ?					
332	up 0.5 to 95.5		2.4	95.0	
+ ?	Note				
+ ?					
333	up 0.5 to 92.5		5.6	92.0	
+ 50	up to 91.0				
334	up 0.5 to 90.0		8.0	89.5	
+ 50			8.6	89.2	
335			8.7	89.0	

Notes
Turn ahead
to next P.M.
Cairo

Finishing Stakes

43

On top 12" P. Dump 35' S to 232 + 70

Note: For Plus Stations bet Sta 331
and 332 See Field Book "H. 1".
N.E. P. Cairo

2.9 $\frac{25.7}{24.7}$ $\frac{-0.5}{19}$ $\frac{-0.2}{16.5}$ $\frac{0.05}{12}$ $\frac{0}{0.5}$ $\frac{0.05}{12}$ $\frac{-0.8}{16.5}$ $\frac{-0.8}{18}$ $\frac{0.05}{19.5}$

Note For Plus Stations Bet Sta 332 & 333
See Field Book "H. 1" N.E. P. Cairo

Low land out $\frac{0.03}{12}$ $\frac{0}{0.3}$ $\frac{0.03}{18}$ $\frac{0.0}{12}$ Low Land

Low ground out $\frac{0.04}{12}$ $\frac{0}{0.4}$ $\frac{0.04}{10}$ $\frac{0.0}{12}$ Low ground out

$\frac{0.01}{12}$ $\frac{0.01}{10}$ $\frac{0}{0.1}$ $\frac{0.01}{10}$ $\frac{0.01}{12}$
 $\frac{-1.1}{19}$ $\frac{-2.1}{18.5}$ $\frac{-1.7}{16.5}$ $\frac{0.02}{11}$ $\frac{0}{0.2}$ $\frac{0.02}{11}$ $\frac{-2.0}{16.5}$ $\frac{-2.1}{19}$ $\frac{-1.0}{19.5}$

4.2

Aug 15-1918 JWCuro
Thursday Montgomery
GWCuro

Point	BST	HZ	FS-	Elev	Grade
B.M.	7.39	107.34		99.95	
327			10.3		97.0
328	up 0.3 ft. 98.6		8.8		98.5
+50	up 0.2 ft. 99.5		7.8		99.3
329	up 0.2 ft. 100.2		7.0		100.0
+50			6.8		100.5
330			7.1		100.0
+25			7.8		99.7
+60			8.6		99.2
331			9.3		98.0

Note:
Turn back on
page on air
shipped on frozen
copying original
field book Curo

Finishing Slates

42

94 Rd	L	C	R
On 4" Oak stps 35' RS 15 327+95			
Check OK on Shoulder Slates			
10.3			
8.8	$\frac{-0.7}{19}$	$\frac{-16}{18.5} \frac{-16}{16.5} \frac{-0.2}{12} \frac{-0.1}{10} \frac{0.0}{10}$	$\frac{-0.1}{10} \frac{-0.2}{12} \frac{-1.0}{16.5} \frac{-2.2}{18.5} \frac{-1.2}{19}$
8.0		$\frac{0.0}{12} \frac{0.2}{12}$	$\frac{0.0}{12} \frac{0.2}{12}$
7.3	$\frac{0.15}{20.8}$	$\frac{-0.8}{18.5} \frac{-0.8}{16.5} \frac{0.0}{12} \frac{0.3}{0.3}$	$\frac{0.0}{12} \frac{-1.0}{16.5} \frac{-1.0}{20} \frac{0.13}{20.3}$
6.8	$\frac{0.50}{24} \frac{0.0}{20} \frac{-1.0}{18} \frac{-1.0}{16.5} \frac{-0.3}{12} \frac{0.0}{11} \frac{0.0}{0.0}$	$\frac{0.0}{11} \frac{0.0}{12} \frac{-1.2}{16.5} \frac{-1.7}{19.5} \frac{0.0}{20}$	$\frac{0.0}{20} \frac{0.0}{20}$
7.3	$\frac{0.50}{24} \frac{0.0}{20} \frac{0.0}{18} \frac{-1.0}{16.5} \frac{0.0}{12} \frac{0.0}{11} \frac{0.0}{0.0}$	$\frac{0.0}{11} \frac{0.0}{12} \frac{-1.2}{16.5} \frac{-1.5}{19.5} \frac{-0.6}{20}$	$\frac{-0.6}{20}$
7.6	$\frac{0.30}{22} \frac{0.0}{20} \frac{-1.1}{16.5} \frac{0.0}{12} \frac{0.0}{10} \frac{0.0}{0.0}$	$\frac{0.0}{10} \frac{0.0}{12} \frac{-1.6}{16.5} \frac{-2.0}{20.3} \frac{-0.6}{21}$	$\frac{-0.6}{21}$
8.1	$\frac{0.0}{19.6} \frac{12}{19.0} \frac{0.0}{19.0} \frac{-1.1}{16.5} \frac{0.0}{12} \frac{0.0}{11} \frac{0.0}{0.0}$	$\frac{0.0}{11} \frac{0.0}{12} \frac{-1.6}{16.5} \frac{-1.8}{20} \frac{0.0}{20.8}$	$\frac{0.0}{20.8}$
9.3	$\frac{0.0}{20} \frac{-1.1}{19} \frac{-0.9}{16.5} \frac{0.0}{12} \frac{0.0}{0.0}$	$\frac{0.0}{11} \frac{0.0}{12} \frac{-1.1}{16.5} \frac{-1.5}{19} \frac{0.10}{20.5}$	$\frac{0.10}{20.5}$

Aug 17-1918

Cous.
G. C. Cus
Montgomery

Point	BS+	HI	FS-	Elev	Grate
B.M.	3.44	94.66		91.20	
328					98.6 98.5
+50					99.5 99.3
329					100.2 100.0
+50					100.5
330					100.0
+25					99.7
+60					99.2
331					98.0
332					98.5 99.0
333					92.5 92.0
333+50			4.00		91.0
334					90.0 89.5

Change Grade Stakes
Gull Lake Road

	L	I	R
On lip 12" P. stump	35R	Sl	232+70
Pull up Shoulder Stake	0.1	To	98.6
"	0.2	To	99.5 ^{No} stakes
"	0.2	To	100.2
OK. Not Changed			
"	"	"	"
"	"	"	"
"	"	"	"
"	"	"	"
Pull up Shoulder Stake	0.5	To	99.5
"	0.5	To	92.5
	$\frac{F_{0.4}}{12}$	$\frac{F}{0.4}$	$\frac{F_{0.4}}{12}$ ^{shoulder stakes} set with level
Pull up Shoulder Stake	0.5	To	90.0

Curves

For a curve turn off an angle equal to half the degree of curve

Multiply half the degree of curve by the distance

Notes: For a 10° curve
for 32 ft $5 \times 32 = 1.60$
degrees or $1^\circ 36'$

Then find the tangent of $1^\circ 36'$ and multiply 32 ft by the same

Tang. of $1^\circ 36' = 0.279$
times 32 =

Crown Wing Twp -

44-31

Aug 15th 1922 1922 Twp work

Cross Section

Ridge of sand 800 ft N of Co 16

5-6-31-32-7 43-44 N R 31 W

Beg @ Sec Co = Sta 0.0.

North on Sec line in meadow

300-stake 600 stake 6+45 to meadow

	250 ft	300 ft	750 ft
9	•	•	•

750	•	•	•
-----	---	---	---

8	•	•	•
---	---	---	---

750	•	•	•
-----	---	---	---

500	•	•	•
-----	---	---	---

7	•	•	•
---	---	---	---

3 10' JP BM
E 100

500	•	•	•
-----	---	---	---

6	•	•	•
---	---	---	---

31 32

6 5

47

Point	BS +	HI	FS -	Elev
BM	5.50	105.50		100.00 assumed
S/L 6			11.40	94.1
+ 50			10.00	95.5
"			9.40	96.1
"			9.30	96.2
"			9.60	95.9
7			8.10	97.4
			7.0	98.5
			6.0	99.5
			5.60	99.9
+ 50			6.30	99.2
			4.7	100.8
			4.0	101.5
			3.60	101.9
+ 75			5.60	99.9
			4.0	101.5
			3.20	102.3
			3.00	102.5
8			5.40	100.1
			4.20	101.3
			3.30	102.2
			3.00	102.5
+ 50			5.60	99.9
9			4.90	100.6

Curo T.
Anderson road.
L

Aug 15-1922

R.

47

N. root of 10" SP. 75 out at sta 7.
is measured

25' R

50' R

75' R

25' R

50' R

75' R

25' R

50' "

75'

25' R

50' "

75' "

25' R

50' R

75' R

4.5
25 out4.0
50 out4.0
75 out4.0
25 out R3.30
50 out3.2
75 out

John W. Curo

Oct 22-1922 Sunday

Bat and I L. Rd @ 10-45 go
 to Crow Wing - Pickup Dodge and
 Sam Clay - Kim's kills a wolf
 and comes with his team before
 we get thro L. Crow Wing about
 3-Pm. and back to Brainerd
 Slightly Colder today - rain
 last night.

Mr Nicherbocker Elbow Lake
 and his Ford boat Cecil Cobb

Anna Amundson of Norcross

and Mrs Dunn of Hermann Minn

Later Mrs May of Farmington

Coyne - they all left today am.

Sunday School Convention

John H. Curo

Point	Bs +	H I	FS -	Elw
BM				100.000
	4.9	104.9		
6+50				
+60			8.6	96.3
+65			8.5	96.4
+75			8.1	96.8
8.0			7.6	97.3
+25			6.8	98.1
+50			5.5	99.4
+65			-	
+75			-	
8			5.0	99.9

Original JP 75 out @ Sta 7.

nat cut

$$\frac{8}{25} \quad \frac{7.2}{30} \quad \frac{7.1}{65}$$

nat cut

$$\frac{8}{25} \quad \frac{9.1}{40} \quad \frac{8.5}{55}$$

$$\frac{2.2}{62} \text{ natural gravel}$$

$$\frac{7.4}{25} \quad \frac{9.5}{30} \quad \frac{9}{5.7}$$

$$\frac{6.7}{65} \text{ on bank } \checkmark$$

$$\frac{6.8}{25} \quad \frac{9.5}{30} \quad \frac{9.2}{54}$$

$$\frac{8.8}{63} \quad \frac{5.2}{64} \text{ bank } \checkmark$$

$$\frac{5.2}{22} \quad \frac{8.8}{38} \quad \frac{9.3}{50}$$

$$\frac{8.6}{58} \quad \frac{7.4}{63} \quad \frac{4.4}{65} \text{ bank } \checkmark$$

$$\frac{4.3}{28} \quad \frac{7.1}{40} \quad \frac{7.4}{52}$$

$$\frac{6.8}{60} \quad \frac{5.4}{65} \quad \frac{3.7}{66}$$

$$\frac{3.4}{20} \quad \frac{5.0}{40} \quad \frac{5.6}{50}$$

$$\frac{5.0}{60} \quad \frac{3.4}{65} \quad \frac{2.7}{67}$$

$$\frac{3.0}{30} \quad \frac{3.4}{40} \quad \frac{3.4}{50}$$

$$\frac{2.8}{60} \quad \frac{2.8}{60} \quad \frac{3.3}{65}$$

$$\frac{3.0}{30} \quad \frac{3.4}{40} \quad \frac{3.4}{50}$$

$$\frac{2.8}{60} \quad \frac{2.8}{60} \quad \frac{3.3}{65}$$

51 *Ann. Clay*

Pit No 2

HI FS - ECU
100,

assumed

0.	5.68	94.32
0	5.7	94.3
+20	5.35	94.65
+40	5.1	94.9
+50	5.2	94.9
+60	5.0	95.0
+80	5.7	94.3
1	5.5	94.5
+20	6.4	93.6
+30	6.2	93.8
+60	6.3	93.7
+65	6.2	93.6

0	100	5.2	94.8
+10		5.2	94.8
+30		4.9	95.1
1		4.4	95.6
+50		4.7	95.3
2		5.0	95.0
+50		4.3	95.7
3		4.3	95.7
+40		5.2	94.8
+50		5.7	94.3

Pit No 3

Ann. Clay Pit No 2
150 long E and W

on ground surface ditch

7.1	7.5	
1	9	
	7.84	7.85
	1	7
7.7	8.2	
1	7	
7.7	8.2	7.8
1	4	8
8.1	8.3	8.1
1	4	8
8.0	8.5	8.4
1	4	7
8.4	8.8	8.8
1	4	7
	8.5	9
	1	7
8.3	8.8	8.8
1	4	7
8.0	8.0	
1	7	

on bank

Pit 2

Pit No 3

6.8	7.0	7.0
2	1	9
7.2	6.9	
1	9	
6.3	6.4	
1	9	
6.7	6.7	
1	9	
6.9	6.9	
1	9	
6.3	6.3	
1	9	
6.4	6.4	
1	9	
6.8	6.8	
1	9	

on ground

52

Pit 4 Sam Clay

H7

100.

0	4.41	93.59
+10	5.1	94.9
+30	5.5	94.5
(X) +50	5.2	94.8
1	4.8	95.2
+60	5.5	94.5
+75	5.7	94.3

0	100	5.2	94.8
+10		5.2	94.8
+75		5.2	94.8
1			
+40		5.1	94.9
+50		5.1	94.9

100

5.4	94.6
5.3	94.7
5.3	94.7
5.5	94.5
5.2	
5.2	94.8

N.E. West of
road
Sam Clay

Oct 22-1922 cont Pit H=4

52

$$\begin{array}{r} 7.6 \\ 1 \end{array} \quad \begin{array}{r} 7.1 \\ 8 \end{array} \quad \begin{array}{r} 6.8 \\ 16.7 \end{array} \quad 17.7$$

$$\begin{array}{r} 7.7 \\ 1 \end{array} \quad \begin{array}{r} 7.6 \\ 8.2 \end{array} \quad \begin{array}{r} 7.3 \\ 17.7 \end{array}$$

$$\begin{array}{r} 6.8 \\ 1 \end{array} \quad \begin{array}{r} 7.6 \\ 8.2 \end{array} \quad \begin{array}{r} 7.7 \\ 17.7 \end{array}$$

$$\begin{array}{r} 6.6 \\ 1 \end{array} \quad \begin{array}{r} 7.5 \\ 2 \end{array} \quad \begin{array}{r} 7.2 \\ 17.7 \end{array}$$

$$\begin{array}{r} 6.8 \\ 1 \end{array} \quad \begin{array}{r} 7.4 \\ 2 \end{array} \quad \begin{array}{r} 7.6 \\ 17.7 \end{array}$$

$$\begin{array}{r} 6.8 \\ 1 \end{array} \quad \begin{array}{r} 6.8 \\ 2 \end{array} \quad \begin{array}{r} 6.5 \\ 12 \end{array} = 14 \text{ mil}$$

$$\begin{array}{r} 6.6 \\ 1 \end{array} \quad \begin{array}{r} 6.6 \\ 2 \end{array} \quad \begin{array}{r} 6.9 \\ 14 \end{array} = 13 \text{ mil}$$

$$\begin{array}{r} 6.6 \\ 1 \end{array} \quad \begin{array}{r} 6.6 \\ 2 \end{array} \quad \begin{array}{r} 6.6 \\ 12 \end{array} = 11 \text{ mil}$$

$$\begin{array}{r} 6.8 \\ 1 \end{array} \quad \begin{array}{r} 6.8 \\ 2 \end{array} \quad \begin{array}{r} 6.8 \\ 11 \end{array} = 10 \text{ mil}$$

$$\begin{array}{r} 7.1 \\ 1 \end{array} \quad \begin{array}{r} 7.1 \\ 2 \end{array} \quad \begin{array}{r} 7.1 \\ 11 \end{array} = 10 \text{ mil}$$

$$\begin{array}{r} 7.1 \\ 1 \end{array} \quad \begin{array}{r} 7.2 \\ 2 \end{array} \quad \begin{array}{r} 7.2 \\ 11 \end{array} = 10$$

$$\begin{array}{r} 7.0 \\ 1 \end{array} \quad \begin{array}{r} 7.0 \\ 2 \end{array} \quad \begin{array}{r} 7.6 \\ 11 \end{array} = 10 \text{ mil}$$

Pit 5-

N.E. West of
road
Sam Clay

53

20

St Matthias Trip
43-31See Book N:9
Last Page

Continued From

Page 120 - (Leaf 19) Book N:9. (209)

July 7-1925 Tues

See Page 107- Book N:209 For
Time & Board SheetI and my Ford-Pickup Henry Langevin &
Amos Babcocks 8-AM. Find Amos and
Charles Tulhorki waiting. Lv Ford.Amos and his lunch like us. We lay out
1/4 Cor Bet 26-27-T43-R31 as given on
Page 117 Book ²⁰⁹ 209.

Rake in N. end bet 26-27 Then Beg @ 1M @

East along crooked road bet 23-26
Book ²⁰⁹ N:9 Pg 101 @ 300-530-600-900-1200-1500
1800-2100-2400-2700 slates. 2700-77.4-2622.6"find stone con @ in top? NG NO good only a
small 6" stone-flooding around. No os notes
get them to-morrow.1/4 Bet 23-26-43-31 From here East the
road crooks So. or R. Set bill flag 1/2 mile
E @ + roads - Work on line and drive Hub
1.30 ft west and 20.6 ft to of random slates 27
2698.7 E Hub + 1.30 - 2700 slates onRandom-straight line 3000-3300
+ 147.1 = 3447.10 E Hub

Henry & I take dinner with Amos.

July 7-1925 Continued

P.M. Amor Babcock and his lunch take H.L. and I to $\frac{1}{4}$ Bet 26-35-43-31 where we lay out the $\frac{1}{4}$ Cor @ 45° and 40ft out turned from True line E-W. assisted by Ches Tuholski. Then go E and chain along road North bet 26-25-43-31.

3-6-9-12-15-18-21-24-27-30-33-36-39-42-45-48-51-+180-5280 N Stake 2 ft 10 of 3 wheel block in E+W road at Cor 23-24-25-26 the East continued bet 23-26-

@ 3600-3900-4200-4500-4800-5100 + 180-5280 E Stake + 29 Links = (19.14 ft) = 5299.14 E stake then chain half a mile rough Ch East

Tom Harris says Co Surveyor Whitley set a post at this corner 25-26-35-36-43-31.

but found No BTS.

Whitley stake set 2 rods S and 2 rods West of SW Cor of Harris fence. We chain this out and set a stake.

Quit at 5-30 then mark lines till 6-30 and take Henry home at 7- over night with Dennis Board Sheet P9 BL Ch 9. ²¹⁹

John W. Cur

July 8-1925 Wed

Arnor Babcock and his lunk comes for
Henry Langevin and with Charles Tulkowski
they set the 3. corner by Pg 101 Book 9 ²⁰⁹
1/4 Bet 26-27. 1/4 Bet 26-35 and Cor 16
25-26-35-36-43-31 Page 118 Book 9.

Sec 26
T43 R31
N45W 40FT
WIT 1/4

SEC 26
T43 R31
N45E 40FT
WIT 1/4

1/4
SEC 26
T43 R31
SEC 35
COR

2 1/4 LIM
T43 R31
N45W 40FT
SEC 35

2 1/4 LIM
T43 R31
N45E 40FT
SEC 35

Set July 8
1925-54
H.L.C.T. and A.B.

Nate: They set 3. corner-15- Irons

I and Reed go to Beaman and copy note

Bring 20 I.M.S FROM Beaman to Dennis L

Murphy and Kirk Smith give me their ties
on a 15 foot offset at Cor to 19-24-25-30

Bet T43 R30-31 by
TEI Pole NW 34.1 43.10' Hub 15ft W of E. ?
FPOB SW 44.3

Shannon and Harris showed him this cor 3. ?

I see Quinn. Reed eats dinner with Jeanie
& Geo Fallon - I get no dinner. alone at Dennis L.

July 9-1925 Thursday

I and my car drive to Amor Babcocks where Amor and his bunch take us and Charles Tuhalski to work. Walter Peterson is at Babcocks and wants to show us the $\frac{1}{4}$ Cor Bat 13-14-43-31 so we go but don't have time to locate B75 and L. Peterson goes to Cor 19-24-25-30-43-30-31 where we do not seem to be able to fit Murphy's notes into E of road 15 ft west of (Broad 12 N 43 E 1006 only two US. Broad 10 S 43 E 1990)

Mr.

Road born from T43 R30

has just finished a new road - E or T which is 33 ft N of an old fence running E or T and stailed on a point furnished by Murphy, lies for this corner which does not seem to fit the notes & home.

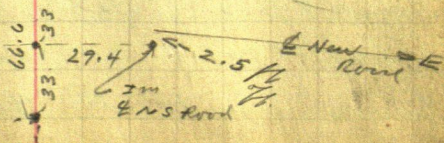
Note: I may have misunderstood Murphy when he read it off

Anyhow

I go ahead and set this corner

19-24-25-30- T43 R30-31

of crooked fence all Furtherst North Post in Pile of stone



19-24-25-30-43-30-31

We first carefully locate line N-S & of
slate road and draw a line N-S-

Then from the two old fences running
West & chain carefully between the corner
posts and find distance 66.6 ft chained from
E of post and 66.0 from "side" of each post
using the "North post" in a pile of stone which
is the "old post" at SE cor of field

Half way bet fences I drive a good
solid 2x12" ^{oak} ^{post} in E E & W narrow graded
road over which I set T-B S west on
on E road and run East 29.4 ft N.

P I of E slate road where we drive a
3/4 x 10" I post. for True Sec Cor 30-31 W
N of old fence running East
19-24-25-30 - US Nails call for

Set ball flag 11.15 ft West of line cor bet
at our True Corner chain

West on E road

11.15 flag: 29.4 Hub 300-600-900-

1200: 1314.5 about, in line with old fence
running South: 1317.2 in line with short
piece of old fence running 100 ft S. then
sags 3 ft E to catch main old fence S
1500-1800-2100-2400-2642.7 very old
fence runs North. Built 35 years ago

by Tom Harris who is now with us and who says the fence is not the line line and did not start from the line $1/4$ Cor as the old US B7S put a creek in the E-W line and that the surveyors put the road & straight for the mile E-W

$1/4$ Bet 24-25-43-31. US Notes say
 YP 24N 9'E 166 Lks - 109.56 gone
 " 24S $8\frac{1}{2}$ °W 286" = 188.70

Note 1- Tom says the fence was built where the surveyor said was about the line line

2644.5 west another old fence built later runs so. 2700-3000-3300-3600
 3900-3958.2 School fence E. side runs so and a cut out line measured from the West by Tom runs north
 $3900 + 105.5 = 4005.5$ W in line with E side of school to $3900 + 280 = 4180$ W
 & Tom Harris road runs so. $3900 + 298 = 4198$ Tom's fence runs so 4200 stake
 $45.48.5100 + 151.10 = 5251.10$ W
 To Hub 0.0. = 5299.14 E = 0.0.
 $5251.10 + 28.9 = 5280$ W stake

At $1/4$ Bet 23-26-43-31 US Notes say
 $4014\frac{1}{2} = 2649.57$ ft
 YP 10N 38W 145 = 95.70

59 July 9-1925 cont'd

26

26 St Mathias

$$y_P 105 \text{ } 1^\circ E \text{ } 80 = 52.80 \text{ ft}$$

We find the slumps of bath lines from which I set the cor by flat ch after which Old US BTS stand as follows.

$N 38^{\circ} W$ and $S 3^{\circ} W$ instead of $S 1^{\circ} E$

Reservation line IP is 1.65" $(= 0.2\frac{1}{2}$ Lks) \Rightarrow out of $\frac{1}{4}$ Bet 23-26-43-31

Y P 12 N 62° 15' E 95 LK = 62.70 ft

yp105 15' W 87 " = 57.42 "

We find the whole NE tier plainly
marked for the Preservation Line.

down-leaving in roots and the remains
of the SW stump. All trees and all
points checked well for position using
mean course of $E+W$ line which crosses
about 20 ft N at this point

$\frac{1}{4}$ sets 11.70 ft E of a loose rock with cross \oplus in tip which may have been moved. The $\frac{1}{4}$ comes 65.80 ft west of stak 2700 E = 2634.20 E - 5.8 = 2628.40

$$\begin{array}{r} 2640.00 \\ \underline{5.50} \\ 2649.50 \end{array} = \begin{array}{r} 2649.57 \\ \underline{2634.20} \\ 15.37 \end{array}$$

Short 15.37

Tom Harris helps us here and we all go to
to Cor 25-26-35-36-43-31 where I
set Cor py proportion which fixes it
As to Ex W

15137

(37)

24

N
↑
front
↓
back

2649.5705
 2634.20 MYCH
 shot 15.37
 2649.5703
 2645.10
 4.47
 shot
 1.65
 26

528005
 5270.98 my ch
 MIX changed

(25)

$= .0017063$ shot
 7929.57 shot 13.55=

July 10-1925 Friday

Same crew Beg @ Temp Cor 5280 N Chain

North bet 23-24-43-31.

3-6-9-12- Hub 15-18-24-2700-52.80

2447.2 Top of big rock in line with old
fence running West and another East. 33-36

3900 + 73.5 = 3973.5 N Curved fence West

421 45-48-5100 + 21 = 5301. N old Hub &
road E-W-S. Temp Cor T.

13-14-23-24-43-31. = 0.0. Pg Book 9.²⁰⁹

US Notes call for:

0.0 = Temporary Cor Record N: 223 Book G Pg 55

"Pop 3 N. 4" = 52.50" - .80 = 50.7 51.70

" " 4 N 59°30' W 73.2" - .80 = 72.40

"Oak 4 55°4'30" E 86.80" - .80 = 86.00

"Pear 15" Stone S 52°30' W 35" = 52.80?

" = West Stake in Big Pile - V 80"

3/4 x 10" Imp. & E-W Road in line with the road
Looking South. 33 ft E of NE Cor Post of fence
running South

Record N: 223, Pg 55 Book "G" also
Page 66. Book N: 9. ²⁰⁹

Note: we find all of the lines - marked and my
old Hub still in the & road 0.0. Page 66.

Book 9.²⁰⁹ all lines check perfect. .80/100 of a
foot less than notes show

I do not check them only roughly for
course. Cut line N + Q cut for mile

John W. Cress

July 11-1925 Sat.

I and my car driver Henry Langevin & Amor Batcock. Amor and his lunch with Charles Toholski pick up Tom Harris and we to my car on SW-SW 13-

work on line (almost) bet 23-24-43-31 drive thru North Bet 23-24-

@ 5301.0 point 0.42 of a foot West of 0.0.

Old Hut Temporary Corner Continues
North bet 13-14-43-31 Tom Harris Ch

5301 + 300 = 5601 - 5901 - 41.9 = 5859.1 Hut
(marked 5861?) 5901. + 300 = 6201 - 113.7

= 6087.3 Hut 6201 + 300 = 6501. stake
+ 128 old line E-W from old stake 6629 N
+ 180.5 = 6681.5 N Old road NW-SE
+ 274.7 = 6775.7 Hut
+ 300.0 = 6801. stake, 7101 - 7401. stake
7401. - 33.3 = 7367.7 Hut
7401 + 300 = 7701. stake all but Tom go home
in lunch to dinner with amor Batcock
P.M.

7701 + 37.8 = 7738.8 N. Hut From which
1/4 Cor Bet 13-14 bet N 0°38' E 211.30 ft

7738.8 N 1/4 Bet 13-14-43-31 sets

N 0°38' E 211.35 ft = 211.30 N. 2.34 E and

Ht 7950. N 1/4 sets E 2.34 ft

US Notes Call for

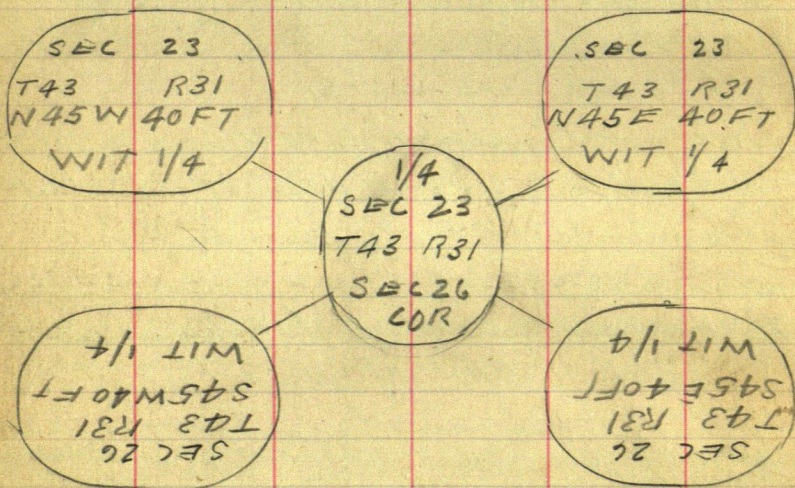
YP 24 N 35° E 124 = 81.94 1/2 Now 7 1/4

YP 24 S 88° W 112 = 73.92

Set 1/4 by flat Ch from face of bath dump
Set 2x15" dry oak Hut and Co. 8' on

July 14 - 1925 Tues

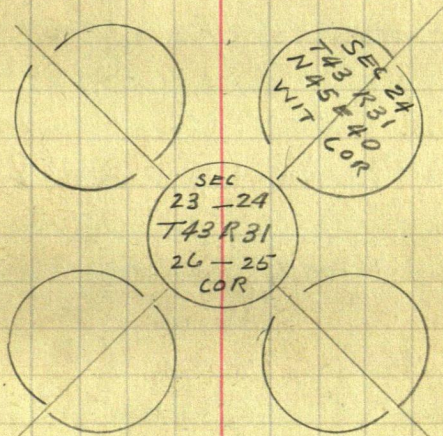
I and my car pick up Henry Langevin
and Reed Curo and we drive to Amor
Babcocks where Amor and I mark
5 IMS for $\frac{1}{4}$ Plat 23-26-43-31



We then set the corners
23-24-25-26-43-31 Vig

As so many corners E-W-N-S
are so uncertain I decide to
Not use or recognize the "29 acres"
mentioned in the US notes or said
notes call for "40 acres" said
notes are not consistent with

themselves: Therefore I will divide
the distance EVENLY N-S-E-W and
place the cor to 23-24-25-26-43-31
by Flat Chain



1 - St Mathias

Nov 1-1926 Monday

This is the day I should start the ^{SV}

Nov 6-1926 Sat. I come from Mpls to Bud
on bus. Meet Co Commissioners at Bud &
BB Nelson road. Get my Ford at Geo Fel-
lows and drive to Dennis and Henry Lan-
gewin farm. Tell them I will be back
soon to set I.M.S. Then drive to Wat
Pugh farm for supper and over night

Nov 7-1926 Sunday - run v-s &

See 5-T R. Morrison Co Then home to
Jenkins in mts

Nov 8-1926 Monday - Meet BB Nelson @ Emily

Nov 9-1926 Tues. Ed Crosby calls for me in his
Hudson. Dinner at Cambridge - Mpls mts

Nov 10-11-12- At Mpls & St Paul

Nov 13-1926 Sat: Ilo - Irene

and L. Mpls 4-30 PM they drive
me to Dennis Langewin farm. As in mts
10 P.M. Raining & wet

Nov 14-1926 All day - rain & sleet

Nov 15-1926 Monday rain & snow & work

I call again at 8-7 PM Pay Dennis 20

Babcock Bros Tel - 6F130 Premier

Dennis Langewin 17F4 "

17F20 "

1920
DEC

50105

SUM

1

John W. Curo

Alma

Recd

Harold

Mrs Babcock

Time sheet

24. *Arabis* (L.) *cruc.* 0317

H Longevin

Deans

Sam Amos

Am Lorenz. Tied.

Frank Viette

16 75 50

69

(3)

St Mothias 43-31
IMS of Roads

November 16-1926 TUES

Cloudy - Not cold - NW wind 2" snow. Henry and Dennis Langwin and I walk 1/2 mile E to Cor 15-16-21-22 T. 43-31. Then walk 1/2 mile N to 1/4 Bet 15-16 = I.M. Run North on random bet 15-16. Var 8'20' Gurley T. 300' Ch PB. @ 25.8 Hut. 300 stake. I take dinner with Dennis.

P.M. L. @ 12-45. Sam Langwin helps Henry waits for Amos Babcock who calls up to say he cannot come. till evening continues

North bet 15-16-43-31 - Var 8'20 Gurley T Perfect ch. - dble cen Hubs. 300-600-900-1200 stks 1287 Fence NW-SE 1318 in line with so fence of lane. 1320 Nth 1334.5 Fence good 3 wire fence E-W. 1500-1850 Nth field 1836 Hut 50 ft. so of timber Heavy S.R. about 1900 Fence E-W. 2100-2135. Hut 2200. Stake- 2500 Nth 2545.4. Hut 5 ft so of brink and 28. N of old road NW-SE

Run Hut 2545.4 Iron Cor. to 9-10-15-16-43-31 Bears N30°20'E down Hill 92.00 ft (46.7 ft).

30°20'

Sine. $30.50 \times 92 = 46.46$ ECosin $86.31 \times 92 = 79.40$ N + 2545.4 = 2624.8 N.At 2624.8 N Cor. sets E 46.46 = ^{Tell 2625.2 via tree low}

Correction = .0177 E = 1'01" Storm all pm

Work 8 to 5

Alma calls in evening and says she is coming tomorrow

John W. Curo

Nov 17-1926 Wed

(4)

Corrections = .0177 E = N $\frac{1}{2}$ mile

70

Bet 15-16-43-31

Hub 25.8 N 90cs E = 0.46 Hub 300 N 90cs E = 5.31 V

" 300 " " E = 10.62 " 900 " " E = 15.93 V

" 1200 " " E = 21.24

" 1312.4 N 90cs E = 23.23 To N $\frac{1}{16}$ bet 15-16 - V

" 1800 N 90cs E = 31.86 Hub 1836 N 90cs E = 32.50 V

" 2100 N " E = 37.17 " 2135 N " E = 37.79 V

" 2545.4 " E = 45.05 (10° Cos = 98481)

@ 2545.4 Run S 80° E 45.74 To True Line V

2624.8 N. 90cs E 46.46 E To Sec. Cor

Dennis - Sam and Henry Langevin at I. L.

@ 8-am. We cut New Line and correct all
Hubs checked - "V" - and set 2x 24 VP Hubs
and tell stikes mtd True Sec Line Curve

Then corrected Hub 25.8. 135 N. on true
Line and run south and cut line. Home for
dinner @ 11-50 Storm all am

PM

LV @ 12-50 in snow storm continue

SOUTH. Bet 15-16-43-31 - 50 half

300-600-900-1000. Stk on line

1141.70 Hub in Field 1285.4 Fence 2 wire

E-W - 1300 - Stake on line in ridge of 177

1600 - 1900 - Stk on Line 1967.9 Hub

Alma - Reed and Harold arrive from Seneca

Harold runs T. 2200 - Stk on line, 2300

Stk 10 ft in bog 2583.2 Hub 30 Fts of bog

2600 Stake 12. FAN 7 & Crooked W-W Road

Walk a mile E To Cor 14-15-22-23-43-31

West on Road 300-600-900-1200

1500-1800-2100-2400-2640 Hub in E

E-W Road Quit at dark

all late supper with dinner Langevin

Still storming

Harold sleeps at Henry Langevin

Nov 18-1926 Thurs

Sam goes to Red. Dennis + Henry and I
work alone - Alva + Harold and Reed
start back for cabin about 10-45 am
Strong NW wind cold and stormy all day

O.D. = Temp 1/4 Cor 4 good 2640 W. of
NE corner 22 = Temp 1/4 Cor B + 15-22
43-31 Ties viz Old N 15° 32' 55" E 30.4
Old Tail 10 JPST 567° 32' W 70.6 SCREW in Box
7" JP in rd XXX" S 3° 05' W 34.45 Spate bar
14" JP 50° 50' E 32.8 Spate 41 mp
Vat reads 6:30 Gurley N 10° 60 compass Readings
Focus 1/2 mile E and Run W 191.7 Stake

Road may cross here as I will follow E
of road as my line

Ties Left and run West on E good @
191.7 Reading 3.25 ft as 7 my stake 191.7
which show cross V
191.7 3.25 = .01695 = 10 about (0.58')
Note: This Temp 1/4 may have 650 12 ft W.
West 300-600-1910-1200-1500-1800-2100-2400-
2640. Tall stake Temp Cor 14-15-22-23-
43-31. Note this may be 25 ft W.

At 5280 Temp Cor 15-16-21-22-43-31
5280 = 71.7 E of Ramble from the north

Cross again here and is
West Bet 16-21-43-31

600 + 120.7 = 730.7 Hub on hill - 1030.7 - 1330.7
1630.7 - 1730.7 stakes in snow 1956 Fence v-
1930.7 + 255.5 = 2186.2 Hub in open field
2480.2 + 176.7 = 2662.9 Hub 2480.2 +
191.7 = 2677.2 E Road 40 ft 50' N 750 ft H.
2962.2 stk in 40 3262.9 - 3562.9 stk
3598.4 main road SW-NE 3862.9 - 4162.9 stk
+ 371.4 = 4200. Old Fence v: 4203 old fence.
4162.9 + 243.8 = 4406.7 Hub 4706.7
5006.7 - 5306.7 + 124.1 = 5430.8 W stk
Fence line with old fence v-5 and 33.50 of E
E-W road. Very cold and stormy
Temp Cor 16-17-20-21-43-31 Home of the dash

John W. Cress

⑥

43-31

Nov 19-1926 Friday

I write H. R. Fuller of Hotel Holland Duluth
(with J. D. Johnson Jr) That I cannot like them
hunting I walk 15 HP Langens farm getting
US Field notes with back to Dennis Langens farm
copy notes Sam Langens and his team takes
us 1 mile N and 1/2 mile west - the fresh up
Frank Viette who knows the Cor. H.

8-9-16-17-43-31

where

U.S. Notes Coll for Post and

W. Oak 15 N 25 E 34 Lks = 22.44 Ft

Elm 10 S 30 E 70 " 46.20 "

" 10 S 72 W 71 " 46.86 "

Wash 10 N 55 W 46 " 30.36 "

We first find the old stake
Set by Co surveyor Ralph and Frank Viette
30-40 years ago when B.T.S. were plain

I find the point of the old stake broken off in
the ground under the N-S all fence - also
the old 4x4x40" oak stake still scratched
lying near Eugene Viette is also present

I draw a hat where old stake is found over
which I set X and lay out points for 1 m S.
NE-NW-SW-SE-30 ft out

Place flag at cor. Pack Transit about 600 ft S
to top of hill and all go home to dinner.

P.M.

Old Fence seems to cross SE 1/2 mile then run
SW 1/2 mile to cor. I want to run straight there
the mile from cor. to 8-9-16-17-43-31 run

South 8' or 610 ft to knob on hill. To over that 610
Top of hill is 610 ft so seems to be away west

Plate at 0.0. Focus a mile so on W edge of boundary
line Transit telescope set on beam N 2° W 610 ft

Figuring

Tang 2° = 350, dist = 610 x 350 = 21.35

assuming mil. @ 5300 Ft ink 21.35 = .0403

= 775

deducting 610 from 5300 Lvs 4690 Ft

at 5300 N Cor. W 21.35 @ 4690 N Ch W 19.90 ft
set picket To over the cor. Focus on that 610 from
1° 52' R. and run so passing the corrected hat 610 ch
South 300-600 - stake

Nov 20-1926 Sat

Went walk to work. From Hut 6 25 continue so
 9-then line 1200 ft in run 1125 to 1225
 deep run - old creek bed NWSE 1275.8 Hut 1285
 cross wire fence 2 ft E of NW Cor where fence
 runs south also E of our line crosses 4 ft
 ft west of another fence corner where fence
 runs North and West @ 1500 st km line
 1576.85 - Hut 1585 & private road E-W
 1595.6 cross 4 wire fence crooked fence
 runs E only and West 5 ft to Cor post of
 fence N-S 1800-5 ft on line @ about
 2000 N end of small ditch which runs
 south in Saled land 2100 on line in
 west edge of ditch 2400 stake on line in
 ditch 4 ft E of N-S - fence 2625.3 Hut
 2627 cross 3 wire fence E-W 4 ft E of N
 9 inch Cor post - another fence runs E-W 7 ft N
 Another fence Cor sets E 64.8 ft E of our line
 from which opens run south
 2700-3000-3300 - stakes on line in field 3600
 3900 - stakes. + 262.7 = 4162.7 Hut 5.50 S of E-W Fence
 31.60 W of N-S fence 4162.7 + 300 = 4462.7 st k
 in side hill + 285.8 = 4748.5 st k side hill
 + 116.7 = 4865.2 Hut on Top rail in W side
 + 300 = 5165.2 st k + 41.6 = 5206.8 cross E-W
 Fence 13.7 W of Cor Post where fence runs E-W
 and N. 5165.2 + 45.8 = 5211. Hut N of E
 crooked E-W Road.

Very cold quiet late. Alma and Reed are from
 Jenkins in my old Ford 6 PM all eat supper
 with Dennis, Langerwin and as Wesley Corro is not
 expected to live thro the rail we all pull out
 for Jenkins @ 6.50 I Lv my survey outfit.

At Jenkins 9:00 P.M. - Harold is at our house his
 fire started. sleep till 12 midnight. Snow calls us
 and we go to Wesley's. Mrs. G. & M. C. Intook are
 from Fort Falls @ 2:30 stay up till nearly morning

Nov 21-1926 Sunday

all day at home in Jenkins - Harold and Reed
 hound wood and we hunt rabbits in PM.
 Dwight gets Wesley's red 2 poor Chevrolet Sedan
 from Missa

St Mothias Twp 74
43-31 1/2 I.M.S.

Nov 22-1926 Monday

LV Jenkins in my Ford 2-p.m. 3:30 a.m. and pick
up Henry Langerin and we drive 2 1/2 miles West
to Town line. Paul look for corners T10E8S and
along S2 side see 20-21-43-31 and back home for mile

Nov 23-1926 Tues.

Call Jenkins and Alma - Wesley is better
Pay 20¢ to Langerin for call. Look up notes
Take my books to Henry Langerin who keeps
me all a.m. to check notes Dennis & Sam Bulcher

P.M.

John W. Curo 1/2 Dennis Langerin Ft Ripley
Minn R#2 Box 22.
Tel Brainerd 17F4 Dennis Langerin
17F 20 Henry
6F 130 Babcock Bros
amox-chas

Sam L. and his team take Dennis-Henry and I West
O.O. stake set in line with fence running north and
on N side of road near Cor 16-17-20-21. Chain
West along N side of road. Set stakes marked.
West Bet Sees 17 and 20-43-31 P.B. Ch
300 - 483.7 Fema run N - 400 - 900 S1/4 4 ft W 9 ft
Private road North 1200 - 1500 + 200 = 1700
+ 94.4 spot Hump on N side 4 inch cherry tree
in bend of road = 1794.4
2094.4, 2394.4 + 160.9 = 2555.3 stk
in line with C of road South + 220 = 2775.3
3075.3, 3375.30, 3675.30, 3975.30,
4275.30, 4575.30, 4875.30, 5175.30
Stakes at 5061. W Road N-S crosses our line
5175.3 + 300 = 5475.3 + 12.9 = 5488.2 W
Set stake N of road and in line with old Cor post
and old fence running north
Old Sec Cor Stake sets 36 ft N of E-W Road
= True Cor 17-18-19-20-43-31

C.M. (Christopher) Capistrant comes along
in sled and I go home with him - Sam and I
He gives me information viz
Has lived here 41 years. His Father Mr
R.H. (Remi) Took Homestead 41 years ago
W 1/2 SW 1/4 - 16. and E 1/2 SE 1/4 - 17-43-31
= 160 acres Sg
over

NOV 23-1926 Contd

17-18-19-20-43-31

C.M. Capistrant says the cor comes in line with old fence running north and is about two rods at 7 & 9 rods.
He knows an old root so in his field which may be old US BT. He will mark this next spring when his plow hits it and will call me up.

Mr Zoel Duchesneau came here the year before old m Capistrant and has been here "45 years" 30 years ago Zoel was road boss and the old stake n of road 0
17-18-19-20-43-31

was there 30 years ago
Zoel Duchesneau had Homestead 160 acres square being NE 1/4 sec 24-43-32
His N line is short as surveyed by Co Surv Ralph who found 1/4 on N side 24-43-32
burned dishes where they dug up old stake
pronounced "Du Shang"

See Zoel Duchesneau Next Spring

Fence in Law to Capistrant

@ 17-18-19-20-43-31

US Water call for:

YP 28 N 21° E 150 LKS = 90m

E 1m 10 S 65 W 92" = 90m

Tom 12 N 81 W 164 = 108.24 FT OK @ 8° da

Over old stake stump of old US BT. NW is OK for course and dist @ 8° da
130 ft the old fence runs N 5° W as far as we can see a hundred feet of it upon the big hill
big hill

Note: C.W. Coring, Butcher in East Brainerd owned land in Sec 17 - Had trouble with Severs Dugree who owns land in Sec 18 and Pd Dugree \$300 or \$400 for land to some Corings Bldgs
Look up this Transfer @ Reg of Deeds

18	17	16	15	14	13
4155.05					
8155.05	8020.05	8060.05	8070.05	8008.05	8000.05
19	20	21	22	23	24
30	29	28	27	26	25

U.S. NOTES

⑩

43-31

1/4 Bet 15-22 { BP 10 S 78 E 78 =
" 10 N 84 E 107 =

15-16-21-22 { YP 16 N 51 E 10 = YP 15 N 77 W 23 =
YP 12 S 29 W 21 = YP 12 S 43 E 18 =

1/4 Bet 16-21 { BP 10 S 43 W 106 = 69.96 FT
ASPEN 6 N 2 E 67 gone?

16-17-20-21 { YP 20 S 64 W 183 = 120.87 FT
YP 20 S 27 E 224 = 147.84 No other near

1/4 Bet 17-20 { YP 20 N 7 E 96 = 63.36
YP 12 S 1 W 93 = 61.38

17-18-19-20 { YP 28 N 21 E 150 = Tam 12 N 81 W 164 = 108.24
Elm 10 S 65 W 92 =

1/4 Bet 18-19 YP 16 N 85 E 500 = 330 FT
No other

SW Cor 18.1.

1/4 Bet 22-27 Bl. Oak 10 S 44 W 76 =
Maple 6 N or H. 36 =

21-22-27-28 Tam 10 N 2 E 48 = Tam 55 S 60 E 32 =
Tam 65 W 20 = Tam 7 N 17 W 65

1/4 Bet 21-28 BP 6 N 19 E 33 =
BP 5 S 39 W 10 = 6.60

20-21-28-29 { YP 20 N 28 E 136 (89.76) YP 24 N 42 W 121 = 79.86
YP 24 S 46 W 145 = 95.70 YP 20 S 55 E 170 = 112.20

1/4 Bet 20-29 BP 6 N 1 W 30 = 19.50
" 10 S 13 W 19 = 12.54

19-20-29-30 YP 14 N 25 E 37 = 24.42 YP 14 S 53 E 55 = 36.30 (25 = 23.10?)
" 20 S 4 W 65 = 42.90 " 20 N 36 W 55 = 36.30

1/4 Bet 19-30

SW Cor 19.

1/4 Bet 21-22 YP 20 N 17 W 405 =
BP 10 N 7 E 125 =

1/4 Bet 20-21 YP 15 N 68 W 180 =
YP 20 S 24 E 125 = gone

1/4 Bet 19-20 YP 7 N 73 W 47 = 31.02
" 9 N 24 E 34 = 22.44

1/4 W. Side 19.

1/4 Bet 27-28 WP 15 S 76 W 26 =
Aspen 8 N 48 E 98 =

Nov 24-1926 Wed

Sam Longevin and his team take Henry-Dennis and I to cor of

US Notes call for 20-21-28-29- 43-31 where

Y. Pine 20" N 28° E 136 LKS = 89.76 Feet
 Yellow W. P. 24" N 42° W 121 " = 79.86 "
 Y. P. 24" S 46° W 145 " = 95.70 "
 Y. Pine 20" S 5° E 170 " = 112.20 "

We find the stumps

of NW-SW and SE trees not marked but the only stumps near from which we set the corner by flat chain from face of stump.

Except that the distance bet NW and SE stp is 0.4 of foot too long. divided equal

Set 2x12" Oak Hub 6 ft S of E of NW Road after which old BTS stand as follows 7°40' Var turned from in line with S side of road E also West

old BTS = 20" YPN 24°15' E 89.76 + 2 = 89.96 - 0.2 Long

" " " 20" " S 3°52' E 112.2 + 2 = 112.40

" " " 24" S 53°35' W 95.7 + 0 = 95.70 - OK.

The old NW BT has been plowed out in a field Cor Post of old fence SE cor N 16° W 25.8 Leans over

1x2 W BTS Tree

5" Fence Post N 10°08' W 45.00 Ft } T. flat spot

4" " " N 52°45' W 41.00 " } at base

2" Oak Tree S 73°24' W 70.40 "

Set 2x12" Oak Hub in pile of (3.) stones for

True Cor 20-21-28-29- 43-31

P.M.

We all walk to work. Work Transit on line looking north a mile on west edge of pine Grove and from a pt 27.35 West of Cor

20-21-28-29- 43-31 Run

North. @ 196.5 N. Hub on hill under T

SEC Cor Bears S 7°55' E 198.8

7°55' Sine 13780 x 198.8 = 27.39 (Nad 27.357)

7°55' Cos 99047 x 198.8 = 196.90 (Nad 196.57)

@ 200-500 stake on line 800- 920.2 Fence NW

N. and S. Fence 4' R @ 1025 Ice 1100- on ice

1200 Lvs in Pat Hall 1320.5 Corn Fence

Running West 3 ft W of N-S Fence 1400-1700

+ 162.2 = 1862.2 Hub 2.5 W of N-S Fence

2000 + 128.6 = 2128.6 Cross Fence 2 ft W of N-S Fence

2000 + 140 = 2140 Stake 5 ft W of Cooked

road - run SE-E - NW to N.

(12)

43-31

Nov 24-1926 Continued

 $2140 + 300 = 2440 + 200 = 2640$ HubS.O.N and 2 F.W of old slabs (2 old slabs)
set for

1/4 Bet 20-21-43-31 where

US Nails call for YP15N 68W180 = 118.80

Both augers - plowed out in old field

 $+300 = 2940 - +300 = 3240 + 190.4 = 3430.4$

Hub in H.H. 87.5' N of E-W. F.W.

Quit at dark

Fabian^{and} Mrs Langerin return from
Brainerd with aldia cloudy - so wind
2" Snow. Zero

Nov 25-1926- Thurs

Thanksgiving

Cloudy - South wind. Almacoils from
Jenkins - cannot hear her - only partly

Dennis - Henry - Sam and I walk W and S

Bet 20-21-43-31 Continue

North: $3430.4 + 300 = 3730.4 + 300 = 4030.40$ $- + 70.2 = 3960.2$ N. Cross 3. wire fence

12. ft W. of Cor where fence runs E-W-S-

 $4030.4 + 92.8 = 4123.2$ Hub. Note: old 2" Hub

Set by Garrison and his deputy 15 years ago

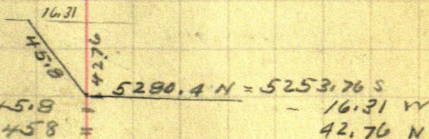
Sets about 12 ft. S and 1. foot E

 $4423.2 + 96.7 = 4519.9$ Hub - 4819.9 - $5119.9 \text{ stks} + 160.1 = 5280.0$ N set Hub so of road

Note: This Hub is really 5280.4 N. of Cor

over Hub 5280 N. the Hub 5211. S - (Pg 73)
bears N 21° 03' W 45.80 Ft

5211.4 S



Nov 25-1926 Continued

Light rain all forenoon Louis (Louis")
DeRosier multi-use cor to

16-17-20-21- 43-31

Where he says that Garrison placed his cor
post "2 Rods" about East of the old fence
running north Bet 16-17- 43-31
and as soon as we have located the
True corner he DeRosier wants the line
to run straight north for a mile even
tho he loses a few acres of feet of ground
"Bully for Louis!"

PM

Louis comes back and we all dig for a
stone in line with a row of old hubs
(2. Hubs) used by Garrison when he ran
so bet 20-21- 43-31

We produce this line by setting Transit
over a hub one foot E. of our line at
about 411 N and back sight on his old hub
South about 1.5 E of our line @ about 3400 N
His line cuts about 2 ft west of our line
@ 5280.40 N.

We find No stone and Tie in Hub 5280.4 N
JP8N 61. E 146.8. JP9N 2°56' E 87. To Spot
at base turned from our random back
sighted South

Note: Sam and I Check Chain the mile West
Bet 17-20-43-31 and find it Wrong
and 300 ft shorter than rules show Pg 74

Check Chain

There is no stake 3675.3 The 1/4 Cor may
come @ 2555.3 + 24.7 about = 2580 = 60. Short To 1/4
or 2555.3 + 16.7 " = 2572 = 68 "

Total Leislins 0 to 5188.2

2608.2 ^{multiplied} 2580
K Tr 1/4 5188.2
TH 1/4 Total

2753.6
To 1/4

Fig 2750.2 - 282 = 2722 Try this

Figuring

See Pg 77, See 140

20 40
8% Too far

St Mothias Twp
40 IMS. 43-31

80

(14)

Nov 26-1926 Friday

Henry. Sam^{2nd} Dennis walk with me to Cor

15-16-21-22- 43-31

set tall pole on bank N of road 12 ft N and
38.5 W of Picket 5280 W MKd o.b. Ch

South along W side of fence Bet sec 21-22
E 300-600-900-1200 Stk 1500s Hut

1800-2100-2400- (Nals: @ 15125 Cross short piece
of fence E-W) 2525. Hut 2700-3000-3300-3600
3900-4200 stake not on line pack in Transit

PM

I throw water out of Transit - like off telescope
and oil it up and @ 1-70 Sam corner with team

1/4 Bet 21-22-43-31

US Notes coll for VP20N17W 405 = 267.3 Ft
BP10N7E 125 = 82.5 "

We do not stop to look for these but cont

South bet 21-22- E 4200 + 265.7 = 4465.7 Hub

on E side of hill 4500 stake 4800-4975

Ent SWP E-W- 5100 in SWP 5280 Hut

5400 Stk in swp. E 5280 S bet 2x 38" Tam:

Hut in SWP Turn Cor To

21-22-27-28- 43-31

US Notes: Tam 5560 E 32 = (2112 Tam 10N2E 48 = 31.68
657 W 20 = 13.20 " 7N17W 65 = 42.90 Ft

We hunt for these till dark and get home in ch
sled late. Still with Dennis Langwin

Gurley Transit 300' Steel Tape

P.B. Ch. Double Center Hubs

Everybody chains and Flags. I use plumb bob.
and chain - always.

Note: (June 21-1928) Ht 2525.5

1/4 Bet 21-22-43-31 bears

S 9°16' E 130.10 W

John W. Cuno

(15)

Nov 27-1926 Sat

Sam and his sled driver Dennis - Henry and I
to Cor to see

22-23-26-27 43-31

West

Iron Monney BS E on 2 road then
on random bet 22-27-43-31 Var 10'in open meadow - Sam digs ground.
tree to break down grass and dead brush.
It works fine.Amos Babcock meets us
at Cor and as he is one of the Town Board
goes along to show us some corners and to
superintend survey @ 300-600-900-
1200-1500 stakes in open meadow
1320 Hut 1800-2100 2400 stakes 2475 LV open
Meadow 2640 Hut Temp

1/4 Bet 22-27-43-31

US Notes BO 105 44W 76 = 50.16 Ft
Maple 6, N--36 = 23.76 " give
2700 + 146.3 = 2846.3 Hut on low hill 3000 s/h
3100 about ent open meadow SE-NW-TN
3300-3600-3900 s/h 3960 bet 2X36" Tam Hut
For Temp w. VC Cor
4000W LV open meadow ent brush - low land
meadow 7. 4200-4500 s/h 4570 LV
meadow - ent low ridge N-S.
4500 + 164 = 4664 cross good crooked old
wagon road NW-SE
4775 ent SWAMP NW-SE 4800 stake - 198-
4602 Hut on ridge 4800-113 = 4913 ent S.
half a round Island in SWAMP @ ? Hut
on Island 5090 ent same SWAMP LV Island
5100 stake + 180 = 5280 Hut 2X36" Tam Temp Cor

21-22-27-28 43-31 see Page 80

5400W. Set stake mtd 53" Note: change this
monday. Quit at dark. Babcock walks home.

Note: At noon we worked till 12-20 pm and got home
for dinner at 1 pm. Amos Babcock also dinner
with me at Dennis Langevin farm. Cold SE wind
all day.

Nov 28-1926 Sunday

Dennis and Mrs L Take Aldia back to
School at Red.

(16)

NOV 29-1926 Monday

Sam and his team take Dennis - Henry and I
so where we meet amor Babcock. Beg @ Cor 15

20-21-28-29-43-31 RUN

East on So side of graded road between
Bet 21-28

300-600-900- about 1185

Hub set N

1320 Hub in So ditch 1500-1800-2100 stks

2150 about

Road NE cut off road

2400-247210 Hub 2 ft N of bank and 18 ft N of

E-E-W new graded road

2640. No Hub

1/4 Cor Bet 21-28-43-31

US Notes Coll For BPUN 19E33 = 21.78

BP5539W10 = 6.60

There may be grubbed out in construction of
new road. Continue

e 2655 W ditch new road w.s

East

2682 E

3000-3300-78.70 = 3221.3 E Hub

3600-3900-3960 Hub Amer catch with me
PM.Continue E $4200 + 161.6 = 4361.6$ Hub $+243.2 = 4604.8$ Hub near E Brink of
HL ridge 25 Ft above SWAMP $4604.8 + 300 = 4904.8$ Stake in swamp165 Ft out in SWP $+300 = 5204.8$ Stake $+85.2 = 5290$ E set 2X36" Tam Hub in
SWP about 1.5 West and 18.8 N of Hub

5280S

We drive nearly a mile so... then decide to
continue my random line so. From Hub

5280S we continue

South Bet 28-29-43-31 @ 5280S $+352 =$

5632. Hub on Hill 175 South of swamp

120 N of SWP and 125 W of SWAMP. 5932 stk

 $5632 + 300 = 5932 - 6232$ stk N edge of what

looks like soft open SWP on Rise well

6450 L open cut same Tam SWP Timber

Spruce 6532 Stake $+68 = 6600$ Hub

Temp N 1/16 Cor 70 Ft N of S. edge of SWP

N.W.-SE. Too dark to see more

Hans Babcock walks home - we drive

Hanna calls up from Senhain - says

old John Gilmore was found dead in the
woods.

John W. Cress

(17)

Nov 30-1926 Tues

Warmer - so wind. Sam Langdon and his
 team takes - Henry - Dennis and I. South where
 we must cross Babcock Rain and sleet 9 am

Reg @ Stake 6600.5 (No hub) continues

South let 27-28-43-31 on random

6670 L_v Swamp NW-SE = Foot of big hills Thence
 Up hill 6600. + 170.2 = 6770.2 Hub on first
 Bench - continue up 6770.2 + 121. = 6891.2 so to
 white Birch picket not marked on ridge +
 182.3 = 7073.5 stake on next bench + 194.3 =
 7267.8 so Hub on lip Thence down slope and up
 15 feet land + 150.2 = 7418 stake on south slope
 at about 7600s - our team is tied in long
 reverse running E-W. 7418. + 300 = 7718 stake
 on N slope + 300 = 8018. stake - 98. = 7920 Temp

1/4 Cor Bet 27-28-43-31 where

US Notes Coll For Aspen 8N 48E 98" = 64.68"
 snows hard from 10-30 To 11.30 a.m. Dennis
 Langdon's farm @ 11.50 - a.m.

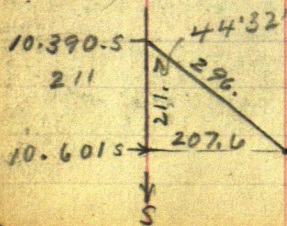
PM

L_v @ 12.50 Wind swings in NW turns colder
 Continue South 8018 + about 10 = 8028 S - an old
 5x60 inch oak stake 10 years old? bears East
 about 8 ft. as there are no stumps West of
 this stake and lots of stumps S-N and to close
 in we know the stake was not set from US BTS
 Therefore we cannot use it and continue
 South 8318.51k + 94.2 = 8412.25 Hub
 + 300 = 8712.2 9012.2 9312.2 + 156.5 =
 9468.7 Hub on last hill 5 ft N of plowed field
 E-W 9768.7 - 10068.7 - 10.368.7 + 21.3 =
 10.390. Hub in plowed field

From 10.390. S. Cor to 27-28-33-34-43-31

Bears S 44°32' E 296 Feet

44°32' Sine = 7013 x 296 = 207.58 E
 COS 71285 x 296 = 211.00 S



True Cor 27-28-33-34
 T 43-1331

Very cold NW wind

Jahnaemo

Dec 1st 1926 Wed

Figuring: For the Cor To 27-28-33-34

43-31. See Page 112. Standard Bk 9. 209

Note: yesterday we found The Hub 0.0 in
S. Wheel Track. Checked perfect with BTS.

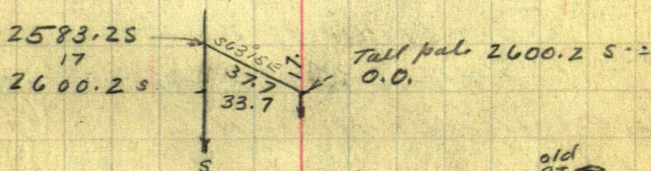
Figuring: See Pg 70. and 80 This Book.

π over Hub 2583.2 S (Pg 70) Hub 0.0 (Pg 80)

bears S 63° 15' E 37.7 Feet

$$63^{\circ}15' \text{ sine } 89297 \times 37.7 = 33.67 \text{ E}$$

$$63^{\circ}15' \text{ cosine } 4501 \times 37.7 = 16.96 \text{ S}$$



$$2384.42 + 2640 =$$

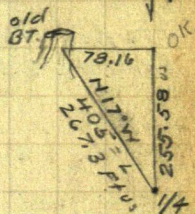
Figuring 1/4 Bt 21-22-43-31

$$4P20N17W405 = 267.3$$

$$\text{US Notes } B P 10 N 7 E 125 = 82.5$$

$$17^{\circ} \text{ sine } 2924 \times 267.3 = 78.16 \text{ E}$$

$$17^{\circ} \text{ cosine } 95615 \times 267.3 = 255.58 \text{ S}$$



Sunshine - very cold - no wind.

Sam Langelvin and his team like Henry
Dennis and I East Amos Babcock does NOT
come LV 8-10 am.

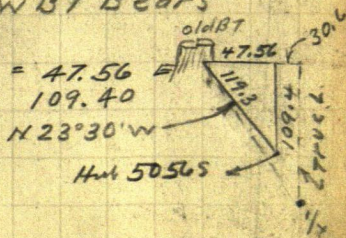
Note - Pages 70-80: From Hub 2583.2 S chain
from stake 26 - 2900 - 3095.10 Hub
3200 - 3500 - 3800 + 182 = 3982. Hub
4100 - 4400 - 4700 - 5000 stks + 56 = 5056. S Hub +
300 = 5356 S Hub

π over Hub 5056. S old NW BT Bears
N 23° 30' W 119.3 ft

$$23^{\circ}30' \text{ sine } 3987 \times 119.3 = 47.56$$

$$\text{cosine } 91706 \times 119.3 = 109.40$$

$$\begin{array}{r} 5056.00 \\ 109.4 \\ \hline 4946.6 \end{array}$$



Over

Dec 1-1926 continued

Figuring and of course working P.M.

At 5056. S. P. on True Line E of BT Stp brs
 109.4 N. To 4946.6 S My chain = 5024.42 vs S
 P.M.

Figuring 1. To 2.15 P.M.

Note: I will figure the line straight
 across bet $\frac{1}{4}$ on W side of Sec 15 To
 $\frac{1}{4}$ Bet 21-22 43-31

But may put it on line with the old Fence
 running North built 30 years ago by old
 Williams" as Dennis Langerin says.

Sam Williams built the fence 30
 years ago @ 15-16-21-22-43-31 - North

Now let's figure distance N-S-

Total dist From $\frac{1}{4}$ N To old BT Stp @ $\frac{1}{4}$ S.
 $2640 + 2384.42 = 5024.42$ vs =
 $\frac{4946.60 \text{ Mych}}{77.82 \text{ short}}$

$77.82 \text{ short in } 5024.42 = 0015488$

Then N half	2640. short	40.89
" S part	2384.42 "	36.93
		<hr/> 77.82 check ✓

Note:

①	HJC	90.00
②	"	105.00
3	HR Langevin 13 ¹ / ₂ @ 33	39.00
4	Dennis Langevin	37.50
5	Sam Langevin 33. Team 19.50	52.50
6	Arnos Babcock	9.00
7	Mrs Dennis Langevin @ 1 a day	17.50
8	Frank Viette	6.00
		<u>356.50</u>

Index

T 48-R31

1-2-11-12
 2-3-10-11
 3-4-9-10
 4-5-8-9
 5-6-7-8
 11-12-13-14
 10-11-14-15
 9-10-15-16 Pg 69-70
 8-9-16-17 Pg 72
 7-8-17-18 Pg 90
 13-14-23-24 Pg 61
 14-15-22-23 Pg 70
 15-16-21-22 Pg 69-70-71-80-85
 16-17-20-21 Pg 71-73-74-76-78-79
 17-18-19-20 Pg 74-75-76 This Book
 23-24-25-26 Pg 54-58-61-63-66
 22-23-26-27 Pg 81
 21-22-27-28 Pg 76-80-81
 20-21-28-29 Pg 76-77-82
 19-20-29-30 Pg 76
 25-26-35-36 Pg 54-55-59
 26-27-34-36
 27-28-33-34 Pg 83-84
 28-29-32-33
 29-30-31-32

- This Book N^o 201

1/4 Corners

Bet Sees

+1-2=
 1-12
 2-3
 2-11
 3-4
 3-10
 4-5
 4-9
 5-6
 5-8
 6-7
 7-8 Pg 90
 7-18 Pg 90
 8-9
 8-17 Pg 90
 9-10
 9-16
 10-11
 10-15
 11-12
 11-14
 12-13

BOOK 201 = This Book
INDEX

88

T 43 R 31

Bot Secs. 1/4 Corners Continued

13-14 Pg 56-63-64-

13-24 Pg 57-63-64-

14-15

14-23

15-16 Page 69-70

15-22 Page 70-71-76 This Book

16-17 Pg 72-73

16-21-Pg 71-76

17-18 Pg 90 This Book

17-20 Pg 74-76-79-

18-19 Pg 76

19-20 Pg 76

19-30 Pg 76

20-21 Pg 76-78

20-29 Pg 76

21-22 Pg 76-80-84 This Book

21-28-Pg 76-82

22-23

22-27 Pg 76-81- This Book No 201

23-24 Pg 61-63

23-26 Pg 53-54-58-59-65

24-25 Pg 58-

25-26 Pg 55-

25-36

26-27 Pg 53-55-

26-35 Pg 54-55-

27-28 Pg 76-83- This Book No 201

27-34

28-29 Pg 82-

28-33

29-30

29-32

30-31

31-32

32-33

33-34

34-35

35-36

Town Lines: Pg 55-56-57-76-

Irons: Page 55-65-

Res Line Pg 60

Maps Pg 56-60-62-

Time Sheet

Board sheet

Note: INDEX (FOR BOOK N^o 209)
SEE BOOK 209

23-24-25-26 Page 66.
22-23-26-27 Pg 17-18-19-61-66-68-72-108
25-26-35-36 Pg 116-118
26-27-34-35 Pg 17-105-108-109-110-113-114-115
27-28-33-34 Pg 110-112-113
28-29-32-33 Pg 110

Book 209

1/4 corners

4-9 Pg 76-77-90
5-6 Pg 87
5-8 Pg 78-81-82-83-84-88
6-7 Pg 79
10-11 Pg 50-51-52-95
10-15 Pg 38
11-14 Pg 35-36-96
13-24 Pg 67
14-15 Pg 31-32-53-54-62-66-68
14-23 Pg 66-67
15-16 Pg 44-92-93
15-22 Pg 69-70
16-21 Pg 23-70
22-23 Pg 19-69-72-74
23-26 Pg 66
26-27 Pg 116-117
26-35 Pg 116-119-120
27-34 Pg 113
34-35 Pg 105

Note: This index is
for Book 209

Also

1-2-11-12 Pg 12-13
2-3-10-11 Pg 10-12-50
3-4-7-10 Pg 6-7-10-28-49-76-90-94
4-5-8-9 Pg 77-78-90
5-6-7-8 Pg 78-81-85-89
10-11-14-15 " 4-35-37-48-52-57
9-10-15-16 " 42-43-46-47-92
7-8-17-18 " 30
13-14-23-24 " 20-66-67
14-15-22-23 Pg 17-20-31-62-67-68-70-72
15-20-21-22 Pg 22-70
16-17-20-21 " 23
17-18-19-20 " 24
34-35 Morris & Co Line 15-16-105

Book 209

43-31

1/4-17-18

North Pt 17-18 - Var 100° 12' E

00.50 L. surf. 31.50 sub bottom 3550 stream 60

lks wide runs SW

40. Del 1/4 Pt 17-18

BP 12 N 5 W 345

North

5100 L. Bottom NE SW

8000 Co 7-8-17-18-48-31

BP 10 N 35 E 116 =

7-8-17-18 " 7 S 58 E 64 =

9 S 41 W 130 =

8 N 30 W 47 =

1/4 8-17- BP 20 N 84 W 800.

Yp 15 S 77 W 950.

1/4-7-18 BIK Oak 65 14 W 84

" " 7 N 1 W 243

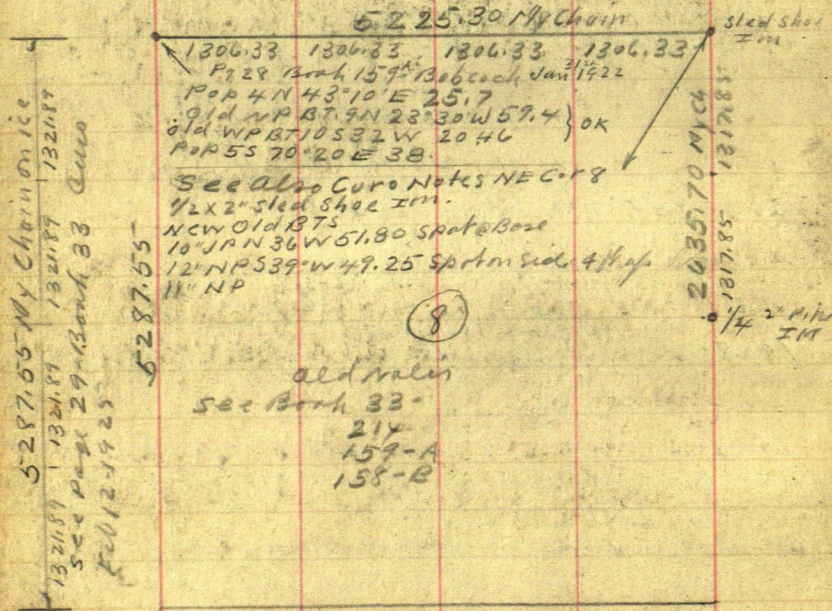
1/4-7-8 BP 45 33 E 179

Oak 65 7 W 300

June 20-1929 Thursday

Bill Stowe wants to deed one acre of
Land to School District No 99 - Crow Wing Co.
In Gov. Lot 6 Sec 8 - T137 - R27 - 5th PM

Copy Old Surveys



See Book 158-B and 159-A. Also 214 and 33

5284.59

(2)

Wm Stowe

92

Ltg Sec 8-137-27

Sch Gds. Dist 99.

one

Old Notes Continued

old value

NW Cor Sec 8-137-27

See Page 28 Book 159-A Jan 31-1922 Ivers R
Babcock in Mechanic Survey Says 5, 6, 7, 8 137-27

find NW¹ & SW old OS RTS plainly marked. Set cor

Take New Bearings & 8°15'E

Pop 4 N 43°10'E 25.7 ft. Pop 5 S 70°20'E 38 ft

Old OS RT - NP 9 N 23°30'W 59.40 ft (OK ch for course)

" " " = WP 10 S 32° W 20.46 ft and distance

From Hilt 10.536.245 Cor stands N 87°10'E 192.25 ft

Signed J. W. P. Babcock. Jan 31-1922

NE Cor Sec 8-137-27

Old Notes

See Page 18 Book 158-B John W Curo in

NICK Everhart Survey Oct 24-1923

at 5221.70 E Cor to 4-5-8-9-137-27 line

S 5°45'E 35.60 foot V 6°50'

at 5225.30 E Cor lies 80 25.42 = 36.425 ft 3.57 E

Find 1/2 x 2" Sled Shoe I.M.

New old RTS viz

10" JPN 36°W 51.80 spot at base

12" NP 53°W 49.25 spot on side 4 ft up leans East

11" NP 57°45'E 131.70 Flat spot at base

SW Cor Post of Fence N 88°20'E 29.0 V 6°25'

Turned from True Line West

Road N-SE and S John W Curo Oct 24-1923

1/4 One East Side Sec 8-137-27

See 203- Also Book 214 Pg 51 John W Curo

2x48" Iron Pipe with 1x15" inch ball inside

10" B-Oak N about 60°E 38.0 Scribed

7" " " N " 45°W 34.65 New

11" WP S " 70°E 56.20 Scribed

J.P.

Co. Road Survey

See Book 33-

June 23-1929 Sunday

All day at Jenkins. I call Bill Stoe
From Dwight's phone via Beaman and
tell him I will be out tomorrow 20%
pd to Mathis. Adjust Heller & OK perfect

June 24-1929 Monday

Alma Reed and in the old Ford
Lv Jenkins @ 8-AM - At Stone Res
9-AM L. Alma Reed and I. 9-15 at
1/4 Cor Bet 8-9-137-27.

See Page 92 - this book^{N°} 201

We chain roughly from NE and NW Oak and
dig up the 2" I.M. Meet Harry James
then drive half mile to N. Cor

4-5-8-9-137-27

We find 48x2' I.M. oblong cap set
by County Surveyor Lewis Knutson
who has evidently set it half a foot
further west than the old steel
shoe used to be. (See Page 92 This Book
N° 201. We do not set up transit but
Ree Reed and I check chain my old
BTS viz 12" NP chains 49.45 ft and
11" NP chains 131.1 x 2. We do not measure here

(4)

94

1312.7

90

1402.7

JUNE 24 - 1929 Continued

We don't like time to check Knutson's New
BTS. Watson's fence built by Bill Shivers
Fence coming from the West hits out two
slips (about 6 feet) too far South

Pack Heller π about 20 rods so to
top of Hill where we take in entire half
mile. set Hub. Reed and I then
walk back with 300 ft steel tape and
Plumb. bob 3-4-9-10-137-27 ch

South along π graded road perfect
chain: $300 - 600 + 187.3 = 412.7$ Hub on
Hill & road. Tie $\begin{matrix} WR 40'S \text{ about } 45^\circ E & 20.00 \\ NP 12 S & 25 E & 46.80 \\ NP 14 N & 60 E & 33.82 \end{matrix}$
to spots 3 ft up. continue 300 to.

$712.7 + 1012.7 - 1312.7 + 90.0 = 1402.7$ Hub
on Hill Dinner with Stowe PM

$\frac{1}{4}$ Cor Bet 8-9-137-27 ch

North on True Line 300-600-900

845 Hub from Hub 1402.75 under π ch

South 387.5 to Hub 845 N = 2635.20

Note: Nov 26/1924 Wednesday

Harold Curo and I chained this half
mile and made N 2635.7

See Page 52 - Book 214

Difference in temperature of tape

Note: We used the same old tape

(5)

June 24-1929 continued

N 1/4 Bet 8-9-137-27

From Hub 1402.7 so Reed and I ch
North 85.10 to 1317.6 S (and N) drive
1 1/2 x 32 inch green Birch stake in...

N-S road for TRUE N 1/4 Cor
 JP 15 N 22° 30' W 53.80
 NP 12 S 72° 05' W 35.85 TURNED FROM TRUE LINE

1 to spot at base

to over Hub 845 N in West shoulder
 of Low spot in N-S-Road

Take Ties viz

JP 14 N 50° 44' E 72.40
 JP 12 S 54° 50' E 64.85

Run N 89° 18' W 572.60 to RR spike
 in E of old Grade Co Road PTN (36)
 Focos N. on Hub 1402.7 Needle reads
 4° 10' on N End and 3° 50' on S end -
 Var 4° 00' carefully shook down

to over spike 572.60 in old grade
 BS S 89° 18' E old BTS Manul;
 JP 8 S 69° 32' E 61.95 Var 4° E
 Oak 8 S 21° 10' W 27.85

From spike 572.6 Run

TRUE West 204.7 to Pine Hub

Transit telescope and run

Ent 50 ft set Hub for Booh Shot

(6)

JUNE 24-1929 CONTINUED

Over spike 572.6 BS $589^{\circ}18'E$
 on Hat 845N and run continue
 $N89^{\circ}18'W$ @162 - Hub on hi bank
 in line with porch of School House
 @170.2 Hub in line with Front of
 main bldg. SECOR 17.4 R
 @196.3 Hub in line with back end
 SW COR 17.10 R @162 SECOR Puck 20.5 R
 School Building 18.4 X 26.3

Has 8 ft porch 12 ft wide

Chimney in West end Belfry in
 East end Quit at 6 PM. Pick up
 Alma and go home Via Cross Lake Dam
 where I meet Chris H. Corli who has sold
 his place to Mr Ludtke

As Mr Corli owes me \$200. for plotting the
 "Corli Tract" and as he has reserved 75 ft
 on so end it will be necessary to make
 some change in the plat before filing

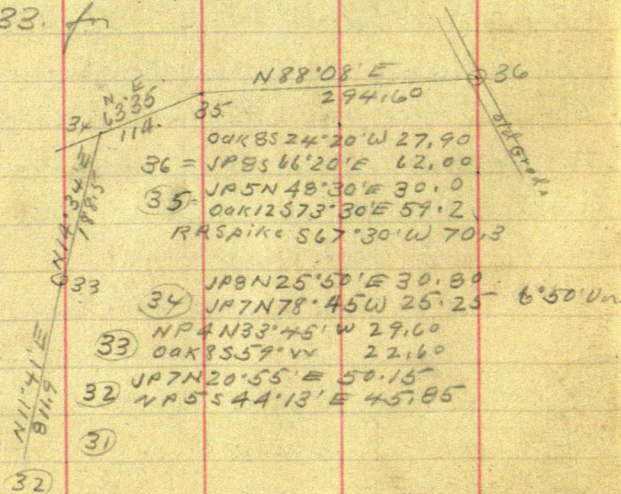
June 25-1929 Tuesday

Circus Day in Brainerd Robbins Bros Show - Mattie and Dwight in their New Whippet 4. takes Alma - Reed and I to Brainerd. We take in the Circus and back to Mattie's for supper.

June 26-1929 Wed

Reed and I measure one face cord 4x8 in Walton's wood pile and haul a part of it home in the old Ford PM.

I copy Co road field notes Page 70-71 Book 33. for



⑧

June 26-1929 Continued P.M.

at 1-50 PM "Billie" Johnston asks for a lunch room. I work in office till 2-30 Read and backli going fishing. Alma and I in old Ford L. Jenkins at 3 PM. Check chain spike at S.E. Cor Staff Tract. Old BTS on Page 57 Book 214
 $3P12S10^{\circ}40'W$ 35.40 ft to spot 8 feet up
 Oak $12N83^{\circ}24'E$ 77.25 via slope = 77.00 plumbed

We take up RR spike and carefully drive in its place a 2X36 inch Iron Pipe. then drop spike in pipe which sticks up one inch 2 ft N of South Shoulder of 8 to 10 foot fill

4 PM I drive Alma to stoweres and Bill helps me. We drive to Road Sta N-32 See Page 97 This Book- Find bath BTS. Chain in and set small rock shot on W side of road for Sta N-32 Then pack Heller π 811.9 ft North (Not chained) and work on line so that BSS $11^{\circ}41'E$ on N-32- Oak 8" bears $S59^{\circ}W$ 22.60 ft and drive 2X30" Iron Pipe for Sta N-33 New BT viz ^(Oak L S 47.50'E) $(32.10$ to spot 4 ft up.

Then Run $N14^{\circ}34'E$ 188.5 set RR spike for Sta 34 temporary- but find we are about 2 ft low for East to check out with old NE BT.

At N-34 We find the stump of NW BT. and set 34 from bath BTS. and drive 2X30" Iron Pipe for Sta N-34.

June 26-1929 continued

From Both old BTS. P₉ 97. we set 2x30" Iron Pipe for N^o (35) and at 36 we pull up old R.R. Spike and drive 2x30" Iron Pipe over Hub 204.7 P₉ 95 BS East. Sta N^o 36 bears East 204.7

35 " S 74° 27' W 92.00 OK.

34 " S 69° 40' W 275.50 205.50 OK

SECOR Staff Tract bears S 69° 45' W 117.6 117.5

Distance in at SECOR Staff Tract 66.16

To N^o 35 is 29.7 Feet OK.

To N^o 34 " 88.5 " OK

Sta 34 to 35 = 114.25 ft OK

" 35 " 36 = 294.60 ft Sec P₉ 71 Book 33.

Note: In February 1925 I surveyed old Co Road using Field Book N^o 33, and set Stations

17-36 inclusive I used West Bailey of Sec 17-137-27 as my Meridian (which is about the same Meridian as West line of Sec 8-137-27)

To day I use East line of Sec 8-137-27 as Meridian there appears to be 3° 10' difference

Var E Side Sec 8-137-27 = 4° 00' OK
 " W " " " " = 7° 10' about
 " 3° 10' Difference

Figuring P₉ 95 Hub 845 N Run

N 89° 18' W 572.6 T. Sta N^o (36)

Sine 99978 X 572.6 = 572.56 W = 572.56 W

Cosine 01222 X 572.6 = 7.00 N + 845 = 852 N

= Co Road Sta (36) = 852 N 572.56 W 1/4 E S of Sec 8

Hub 204.7 + 572.56 W = 777.26 W 852 N

Hub 777.26 W 852 N Run S 74° 27' W 92 T. N^o 35

Sine 96340 X 92 = 88113 W (35) 865.34 W 827.34 N

Cosine 26808 X 92 = 24665 865.90 OK

Hub 777.26 W 852 N Run S 69° 40' W 275.5

Sine 93769 X 275.5 = 258.33 W Supper at Stover's

Cosine 34748 X 275.5 = 95.73 S Nix Home late

(10)

June 27-1929 Thursday

All day in Jenkins. I put 3 checks in Regent Bank. Get caught in heavy rain.
 PM Call C H Corki - Get Mrs Ludtke
 I pay 30¢ I figure in after @ 4 PM
 Mr and Mrs Ludtke call Isaac Walton at Jenkins
 I pay Walton \$1. and \$1. = \$2. for wood.
 Figuring

Road Sta N° 34 $\frac{1}{2}$ Hub 777.26 W $\frac{1}{2}$ 852. N

777.26 W + 258.33 W = 1035.59 W

852.00 N - 98.73 S = 753.27 N Nix

Nix

Stoff Tract

From Hub 777.26 W $\frac{1}{2}$ 852. N Run S61°15'W 117.6 to SE Cor
 SIN 876.73 X 117.6 = 103.10 W
 COS 480.99 X 117.6 = 56.56 S

SE Cor Stoff Tract is 880.36 W $\frac{1}{2}$ 795.44 N

S 74°27'W = 15°33' Tang = 278.26 in 1000

S 69°40'W = 20°20' " = 370.57 " "

S 61°15'W = 28°45' " = 548.62 " "

6:30 PM Note: I have figured Hell out of this and laid it out on the board and cannot make Stations 34 and 35 check with SE Cor of Stoff Tract or with themselves. Moby Bill held the tape wrong

I will chain the darn thing again

John H. Curo

June 28-1929 Friday

Reed and I in old Ford to Jenkins 9:30
 at 10:20 check chain From SECOR Staff Tract
 to 35 is 29.7 OK. to 34 is 89.50 OK.
 34 to 35 is 114.25 OK. From Hub 204.7 to
 to 34 = 205.5 OK to 35 = 92.00 OK
 to SECOR Staff Tract 117.5 OK
 to over 204.7

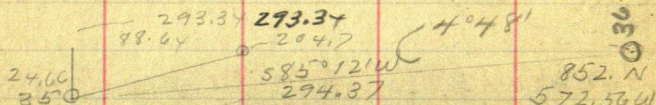
BSE in s 1/4 36-

34 Bears S 69°40' W 205.5' - 35 bears S 74°28' W 92.00 FT
 SECOR Staff Tract Bears S 66°16' W 117.5

July 3-1929 Wed

Figure: Hub 204.7 Run

S 74°28' W 92 sine 96347 X 92 = 8816.4 W
 cos 26780 X 92 = 24.66 S



293.34 and 24.66 = .0840663 = 4°48'

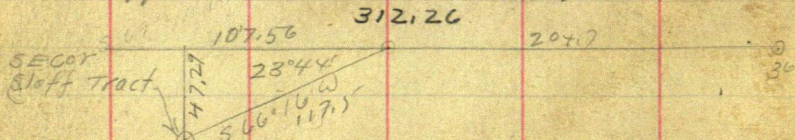
4°48' Cosine = 99649 X 294.37 =

36- is 852.00 N and 572.56 W OK.

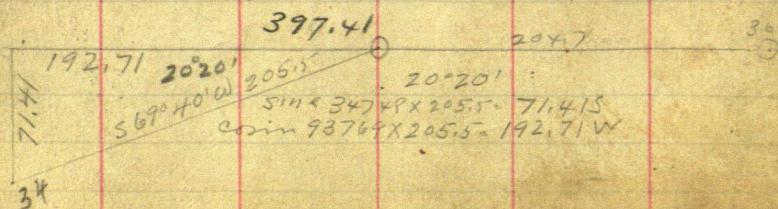
35- is 827.34 N and 865.90 W O.K.

34- is 780.59 N and 969.97 W OK.

SECOR Staff Tract = 804.71 N and 884.82 W OK.



23°44' sine 40248 X 117.5 = 47.295 - 852 = 804.71 N
 cosine 91543 X 117.5 = 107.56 W X 777.26 = 884.82 W



July 5-1929 Friday

I plat up Stowe land and am not sure about chainage across North end so will go over and measure it - also do some work at Corli's lot

Stowe Tract $N55^{\circ}W = 35'$ Tang = 700.21 in 1000

③⑥ $N44^{\circ}2'W 150'$ Tang 900

③⑥ $N45^{\circ}W 300'$ Tang 1000

300 $N52^{\circ}W -$ Tang 1,280

July 6-1929 Sat

I meet Bill Stowe at Cross Lake Reed and I chain 140 ft NW from SE COR STAFF Tract. Then From 36 NW on Road 373 Then S $35^{\circ}W$ about over field 275 ft rough chain to staff fence running NW. Home @ 1-30 PM. Dinner with Mattie alone and feed at Mattie's house

2-30 PM - milk cow - 3-30 meet Dan DeLury and Young Green from Walker

Platting

Trial Plat: Beg @ SE COR Staff Track scale NW $N55^{\circ}W 140$ feet. Then Beg @ Road Sta 36. Scale $N42^{\circ}W 150$ mark point. Then again From Sta 36 Scale $N45^{\circ}W 300$ ft mark point. From 300 Scale $N52^{\circ}W 73$ ft mark point. From Pt 140 Turn 90° Scale $N35^{\circ}E 274$ ft to Pt 373. "40" scale. Scale map and find 43,150 ft. Count squares as a check on 10x10 paper using 40" Find $2700 \text{ squares} = 25 \times 25 = 625$ into 2700 = 43,200 ft close check. $43,560 = 1 \text{ acre}$. I will use my scaled plat 43,150 and add 40 feet. Add 2 ft along N side of my map = $240 \times 2 = 480$ added to 43,150 = 43,630 ft OK close enough.

July 24-1929

Bill and Mrs Stowe call then drive to Mainnet
 Alma Reed and I drive our old Ford to Mainnet
 and buy a new Two Door Ford Sedan
 Ford Cost \$629. - Lock \$3. - Licens \$6.50
 Interest and ins \$56. I pay Wedeman
 \$218.50 cash and he buys Licens
 Bal to pay 12 @ 39.75 = \$477. To pay

July 25-1929

Hot I pay Kemper \$20. in full. Send
 Adin van Lovald \$22.92 + .55 = 23.47
 Work on Plat. Road Sta 35 = $\begin{matrix} 827.34 N \\ 865.90 W \end{matrix}$
 Scale S 45° 39' W 34. Ft to intersection of
 Stoff Tract N 55° W 15.5 ft from SE Cor
 S 45° 39' W 34.00 Feet
 sine = $91104 \times 30.98 W + 865.90 = 896.88 W$
 cosine = $41231 \times 14.025 = 827.34 = 813.32 N$

Try this

From SE Cor Stoff Tract = $\begin{matrix} 804.71 N \\ 804.82 W \end{matrix}$ Run "

N 55° W 15.5 Ft

sine $81915 \times 15.5 = 12,70 W + 804.82 = 897.52 W$
 cosine $5736 \times 15.5 = 8.89 N + 804.71 = 813.60 N$

This dont quite check. Try Tang $\begin{matrix} 24.21 \\ 452.57 \end{matrix}$ in 1000

July 25-1929

Figuring Reed ^{2nd} I Try This

Scale: S 65° 39' W 34.6 = 813.49 N

SE Cor Staff Tract N 55° W 15.3 = 804.71 N + 8.28 = 813.49 N
 Sine 81915 x 15.3 = 12,53 W 884.82 W - OK
 Cosine 5736 x 15.3 = 8,78 N 897.35 W OK

35 S 65° 39' W 34.6 = 827.34 N - 14.27 = 813.07 N
 Sine 91104 x 34.6 = 31,52 W 865.90 W 897.35 W OK
 Cosine 41231 x 34.6 = 14,27 S

Hub 204.7 = 852.00 N
 777.26 W

S 66° 16' W 117.5 To SE Cor Staff Tract
 Sine 91543 x 117.5 = 107,56 = 884.82 W OK
 Cosine 40248 x 117.5 = 47,29 = 804.71 N OK

Try Sta 35

S 74° 27' W 92 Sine 26808 x 92 = 24,66 S
 Cosine 96340 x 92 = 88,63 W

852.00 - 24.66 = 827.34 N
 777.26 + 88.63 = 865.89 W

Note: I will change the Course From 35

34.6) .42 = .1214 = 0.42

Try 34.6) 35 = about

S 65° 39' W 34.6
 .42

Call this

Note: I will check this in the field. Reed and I did it. S 66° 10' W

34.6 To I.P.
 Bull ground distal Hub to 204.7
 Town 204.7 run S 74° 27' W 92, Hub for 35
 " " " S 69° 40' W 205.5 " " 34
 " " " S 66.16 W 117.5 " " Staff Tract

See pg 99.

Over 117.5 BS N 66° 16' E on 204.7 Run
 N 55° W 150.05 Ft T. I.P. & Road
 34 Bears S 74° 12' W 88.4 Ft
 35 " N 39° 54' E 29.5
 Over 35 BS N 74° 27' E on 204.7 Run
 S 65° 49' W 114.05 To 34 @ 34.3 IN

As to North

SECOR Staff Tract: $884.82W + 12.37 =$ $897.19W$ intersection
of RoadSine $819.15 \times 15.1 = 12.37$ N $55^\circ W$ 15.1 $\cos 57.358^\circ \times 15.1 = 8.66N$ $804.71N + 8.66 =$ $813.37N$

West

(35) is $865.90W$ Sine $91224 \times 34.3 = 31.29W$ S $65.49^\circ W$ 34.3 $\cos 40.966^\circ \times 34.3 = 14.053 = 897.19W$ $827.34N - 14.05 = 813.29N$ close check

So That

Intersection of Road With E Bdry of
Staff Tract is 897.19 West and
 813.33 Northfrom $\frac{1}{4}$ Cor On E Side Sec 8-137-27

OK Use This