

167  
THE  
ATLAS SERIES  
167

Number

1003

*Bobcock Ties*

*136-26*

*137-26*

*Records 342-343-346*

*1922.*



Note Book

Price 10 Cents



March 11-1922

N  $\frac{1}{6}$  bet 14-15 137-26

Pop 4 N  $76^{\circ}$  E 5 Paces

Pop 3 N  $31^{\circ}$  W  $\frac{1}{2}$  "

Stake 80 Yds

Dabcock

Crs 5 10-11-14-15 137-26

Oak 3 N  $11^{\circ}$  E 3 Paces

" 2 N  $43^{\circ}$  W  $\frac{1}{2}$  "

Pop 3 S  $67^{\circ}$  W 4 "

Pop 4 S  $80^{\circ}$  E  $7\frac{1}{2}$  "

Stake 80 Yds

Dabcock



~~March 11-1922~~

~~3  $\frac{1}{4}$  bet 10-11- 137-26~~

~~Oak 3 N 40° E 3 Paus~~

~~Oak 4 S 21° W 2  $\frac{1}{2}$  ..."~~

~~Stake 80 Var  
Babcock~~

~~1/2 bet. 10-11- 137-26~~

~~Pop 1  $\frac{1}{2}$  N 38° E 4 Paus~~

~~Pop 3 N 61° W 1~~

~~Stake 80 Var  
Babcock~~

346



March 11 - 1922

N 54 bet. 10-11 137-26

N 0 4 N 52° E 3 1/2 Paces

N 0 3 N 19° W 2 "

Stake 88 Vor.  
Babcock

Cor to 23 10-11 137-26

J.P. 4 N 60° E 3 Paces

J.P. 2 N 35° W 5 "

W.P. 5 S 48° W 6 1/2 "

N.P. 7 S 11° E 11 "

Stake 88 Vor  
Babcock



March 11-1922

8  $\frac{1}{4}$  bit-263 - 137-26

Elm 4 N 41° E 2  $\frac{1}{2}$  Paces

Elm 6 N 70° W 5 "

Stake 80 Var  
Barcock

1/4 bit-263 137-26

Elm 3 N 37° E 4 Paces

Elm 2 N 51° W 1  $\frac{1}{2}$  "

Stake 80 Var  
Barcock



Mar 11-1922

N  $\frac{1}{2}$  Sec 283 137-26

Elm 4 N  $28^{\circ}$  E 3 Paces  
Elm 5 N  $13^{\circ}$  W  $4\frac{1}{2}$

State go for  
Babcock

MC South Side Lake Emily  
bed 283 137-26

Willow 2 S  $18^{\circ}$  W 2 Paces  
"  $1\frac{1}{2}$  S  $33^{\circ}$  E  $1\frac{1}{2}$

State go for  
Babcock.

346



Mar. 12 - 1922

N  $\frac{1}{2}$  Sec 485 137-26

Tam 3 S 28° W 10 Paces

Tam 2 S 25° E 5 "

Cor = 3" Tam Force Post

Line force N 8.

80 Var

Batcock.

---

M.C. North side Lake Front Lake

Sec 485 137-26

Tam 2 N 20° E 11

Tam 3 N 80° W 8

Cor = 4" Force Post

Line force N.

80 Var

Batcock

343



March 12 - 1922

M.C. South Side Lake bet-

485-

137-26

Birch 2 S 15° W 20 Pass

N.P. 4 S 35° E 7 "

State 80 Var  
Babcock.

S  $\frac{1}{2}$  bet 485-

137-26

N.P. 7 S 70° W 3 Pass

N.P. 8 S 52° E 2 "

State 80 Var  
Babcock.



March 12-1922

Cor to 4-5-8+9. 137-26

Oak 4N 45° E 10 Paces.

W.P. 13.5. 24 N 24° W 10 "

N.P. 5.6 20 S 34° W 5 "

N.P. 4 5 50° E 9 "

Stake 80 Var

Butcock.

N 1/2 13.5 8+9 137-26

N.P. 4 S 30° W 7 Paces.

N.P. 4 S 61° E 2

Stake 80 Var

Butcock.



March 12-1922

$1\frac{1}{4}$  bet 8 & 9

137-26

N.P. 3 S  $35^{\circ}$  W  $9\frac{1}{2}$  Pius

N.P. 5 S  $12^{\circ}$  E  $4\frac{1}{2}$

Stake 80 Var  
Barrock

$5\frac{1}{16}$  bet 8 & 9

137-26

N.P. 4 S  $28^{\circ}$  W 4 Pius

N.P. 5 S  $38^{\circ}$  E 4

Stake 80 Var  
Barrock



Mar. 12-1922

Corte 8-9-16-17

137-26

J.P. 7N30°E 3

Paces.

J.P. 2N66°W 1½

Oak 3S10°W 2

J.P. 4S87°E 3½

343

State 80 Var

Babcock

N 46 Act 16+17

-137-26

J.P. 2S60°W 1

J.P. 3S52°E 2

"

State 80 Var

Babcock



March 12-1922

~~1/4 sec 16817 - 137-26~~

~~10. 58570W 2 Pass~~

~~10. 12555°E 4~~

~~State of Va  
Barack~~

~~N 1/2 sec 28829 - 137-26~~

~~10. 35 26°W 3 Pass~~

~~10. 2347°E 13~~

~~State of Va  
Barack~~



Mar 12-1922

~~1/4 bet 28 & 29 - 137-29~~

~~NO 55 680 W 2 Paces~~

~~NO 45 840 E 3 1/2~~

~~Stake 80 Var~~  
~~Babcock~~

343

~~3 1/6 bet 28 & 29 - 137-29~~

~~NO BS 400 W 4 Paces~~

~~Tom 55 600 E 7 1/2~~

~~Stake 80 Var~~  
~~Babcock~~



Mar 12-1922

Cor to 28-29-32-33 - 137-26

Tam 4 N  $34^{\circ}$  E  $1\frac{1}{2}$  Paces

" 2 N  $45^{\circ}$  W 4 "

" 6 S  $52^{\circ}$  W  $6\frac{1}{2}$  "

" 14 S  $87^{\circ}$  E 3 "

State 80 Vor

Babcock

N  $\frac{1}{6}$  bet-32-33 - 137-26

Tam S  $10^{\circ}$  W 3 Paces

Tam S  $27^{\circ}$  E  $2\frac{1}{2}$  "

State 80 Vor

Babcock.



Mar 12-1922

1/4 lot 32-33 / 137-26

Cedar 4 S 61° W 5 Paces

Balsam 10 S 88° E 3 1/2. "

Stake 20 Var

Babcock

S 1/6 lot 32-33 / 137-26

NO 4 N 26° E 5 Paces

NP 3 N 37° W 1 1/2 "

Stake Line fence S E H

20 Var

Babcock



Mar 12-1782

Cox to 324 33-5-136-137-26

Tam 4 N 18° E 1 1/2 Pias

" 7 N 41° W 4 1/2 "

Cider 5 S 62° W 3 "

Spencer 14 S 78° E 7 "

Slake 80 Van

Robert  
West Co.  
Surveyor.

342



$$21 \overline{) 52.95.67} = .007$$

$$\begin{array}{r} 2642.83 \\ 7 \end{array}$$

$$\begin{array}{r} 320. \\ 18.5 \end{array}$$



57

INING  
TRANSIT BOOK  
363

Return to  
Suppl. Service  
Coast Co.



# INDEX

Sec 6-138-30

1-35

SAC 22-140-28

48-67



NO 1

Oct 6. 19.20 Ben F Clary  
Ray Brock went to Baileys head  
with the Spassman and alternately  
7 went up to Walter's fire field  
Notes of Dec 6 T128N R 30  
Signed at the Morrison House  
on Oct 7 1920



2

T 138 N. R 30 Pine River

Ben & Clark Roy Ross  
Wm King Fred Pleggenbelle

Begin at the SEC corner  
1.6.7.12 a iron post with a  
cap on top sitting in the  
middle of a graded Road  
on Range Line thence run  
North but SEC 1.6. 0 b' 55 =  
at 13.20 set a large T&S  
at 26.55 = a iron post  
with a cap on top end of  
the  $\frac{1}{4}$  S but S. 1. S 6 in the middle  
of the State Road  
thence <sup>13</sup> 27.7 = set a true T&S post  
on the graded Road  
thence true line 0 b' 50

run on North on same 0 b' 50  
Begin at the visible  $\frac{1}{4}$  S but SEC 1.6  
a iron post in State Road  
at 275 = a Barre iron fence  
running North

at 460 set a large Hole 1  
at 1076 STA 2



at 13.20 set a lumber 1/2 point

at 17.62.1 = STA. 3 in gate pine

at 25.32.4 = STA 4

the curve turning on Flag in post  
is North 68 west

at 26.48.3 = Enter township line

East of the town line to S. 1.6 = 36.51

36.9 = Feet

line line closer at 7.2 =

at 819.20 + 138.30.

begin at the North west corner township  
138. N. R 30 W and run East along the  
North side SEC 6 on town line

to 819.10 =

at 273.6 STA 1

at 5.42.8 = STA 2

at 810 Enter from orientation lake

at 919.20 Ben F. Clark Bay Rose  
there set up a flag on west side  
of lake and sight on the MC  
corner on East Bank of Lake  
& corner block far post 10 by 10  
stamps US MC there went  
around the Lake to the US  
MC and back sight on



on job on west bank  
 of Lake thence turn a  
 Right Angle west the distance  
 of 200 feet and sighted  
 across Lake to top of the curve  
 bearing on Flag on west Bank  
 of Lake  $N 513.30W$  the distance  
 26.11. at 33.21 over Lake

thence begin at the MC a corner  
 post and run East along a three  
 beam wire fence 8810 =

at 6.42 Feet STA 4

at 10.42.5 = Enter Center of the  
 M1 RR running South 55 East

at 11.04 = STA 5

at 11.80 Enter State ROAD 30 feet W

at 13.90 Enter BROOK running

North West South East

at 17.53.6 = Enter corner to S. 5.6

South of corner 6. Feet 2 =

a corner post 8 by 8 set in  
 ground

true line closer at 88.12 =



Oct 10 1920 6-

T 138. N. R 30 W. SEC 6

Ben F. Clark Rng. Rose  
Will Hinner Fred his men  
begin at the east corner of  
SEC 1. 6. 7. 12. a iron post in  
Township Road on Range line and  
run East on a same line 8.20=  
at 3.76. STA 1. in a plowed  
field.

at 10.53.4 = STA 2.5

at 11 29.8 = set a longer point

at 16.20 Enter Mt Rog. section

at 16.89.2 = set a stake and turn  
a right angle North at 1.5 =

end. measured 400 Foot NORTH

thence turn a Right angle East

at 24.49.8 = set a stake  
then found Post 4 in oaks marked

4S with the following witness tree

jack pine 12 South 50 E D. 7.1 =

N. Pine 12 N 40 W 55.5 =

these trees are marked 4S BT

at 24 75.7 twenty 25.9 = large



Oct 10. 19. 20 b

Ben F Clark Roy Rose  
Mr Kinning run true line  
back west from  $\frac{1}{4}$  S. 6. 7  
to the iron cone in township Road  
and the  $\frac{1}{4}$  at 11.41.3 =

East of the iron post for the center  
S 6. 7. 1. 12. The 1334. 4 =

The true line closes at 8.35 =  
on the center of the iron post in  
the middle of the township Road on  
RANGE LINE

---

thence run NORTH to the  $\frac{1}{4}$  point  
on the North  $\frac{1}{4}$  beg SEC 1. S. 6 on Range  
Line

a iron pipe 2 10 Foot long 2 in diam.  
with out a cap made a hole with a  
post set the same in ground 2 Foot  
put in stone around the post  
and made the four witnesses trees  
a gate from 9. South 84.30 2 Distant 910.9  
- gate from 9 N 813.15 = West - 29.9 =  
marked the same  $\frac{1}{4}$  S. 1 BT  
- - -  $\frac{1}{4}$  S. 6 BT



T138N. R. 30 Pine River Township

OCT 11. 1920

7

Ben F. Clark Roy Rose  
went and set the 16 on west half  
bet SEC. 6. S. 7.

a iron post  $2\frac{1}{2}$  foot long  
3 in diam made a hole  
with a post vuger  
put 2. 60 pennys spits in  
bottom end put pine stake  
on spits set post in ground  
two foot, lamps down with clay  
for the 16 corner.

this post stands at 11.41. 3 = Foot  
East of the SEC corner to sec  
1. 12. 6. 7. and west of the  $\frac{1}{4}$  S  
bet SEC. 6. S. 7. 13. 34. 4 = Foot

No witness tree near  
of any use

---



T 138 N. R 30 Oct 11, 1920 8

then we went to the  $\frac{1}{4}$ S  
a government corner but  
SEC 6. S 7 pull out the old  
post marked  $\frac{1}{4}$ S with  
John Corro stone stamp on  
same

Then we set a iron post  $2\frac{1}{2}$  foot  
3 in diam. with a cap on top  
made a hole with a post auger  
set in ground two foot put  
two sixpenny spikes in bottom  
and put pine knots on same  
tamp down with sand  
old witness tree as follows

Jack pine 9 South & 4.30. East 31.5 = FT  
also pine 9 North & 13.15. West 29.9 =

for the  $\frac{1}{4}$ S but sec 7. 6.  
on the east side of a small  
Lake 90. Foot from water

---



T 138. N. R 30 W SEC 6

9

Ben F. Clark Roy Rose will Herring  
Chas. Casady and Herring men  
begin at the  $\frac{1}{4}$  S but SEC 6.7 a iron post  
at 86 Feet STA 1  
at 50 42 15 = STA 2  
at 13 20 longest point nail in stump  
at 19 2. 6 = STA  
at 26. 32 Foot the corner to SEC 6. 5. 7. 8  
a iron post with caps on top end  
North of post 29. 1 = Foot  
thence set  $\frac{1}{4}$  point west 4 Foot  
set South 14. 5. =  $\frac{1}{2}$  =  
thence run true line back west  
and closed on the center of the  $\frac{1}{4}$  S  
true line closed at 08. 21 =



T138N. R30W Oct 11 1920 10

Ben F Clark Ray Rose W. Kinner  
begin at the Vestible Corner  
SEC 5. 6. 7. 8. A iron post in a  
plough field and earth lat 5.6  
on a same line 7.15 =

at 70 45.2 STA 1

at 13.20 set a temporary point  $\frac{1}{4}$  S

at 22.96.7. STA 2

at 26.40. set a temporary point

found a old post on west side  
of a grade ROAD and a cold water  
tree blown out with  $\frac{1}{4}$  S B T

is a pine 10. S. 06. East 21.8 = Foot

Oct 12 1920 T138N. R30S6

Ben F Clark Ray Rose

Set a point for the  $\frac{1}{4}$  S lat  
Sec 6. 5 Oct 12

A pine stump BT broken  $\frac{1}{4}$  S  
pine 10. S. 54 East Dist. 21.8  
found a pine stump & North side  
BT BT. with a screw iron  
about 7 years ago  
the stump 14. N Dist. 41.4 = F



T 138 N R 30 W  
Oct 12:

11

The Distin bet the Cornes SEC 5. 6. 7-8  
North to the  $\frac{1}{4}$  S point on the line  
at 26. 47. 8 = Foot. Run line 878 = west  
thence set  $\frac{1}{16}$  S point North 5. 9 = F  
set East 4 F 4 = on true line closer  
at 7. 13 =

thence begin at the  $\frac{1}{4}$  S bet SE 5. 6  
and run N over 7. 13 =

at 50 87. 6 = STA 1

at 70 75 = Leave graded ROAD

at 12 Center of MI RR

at 13. 19. 20 Ben F

at 13. 35 Feet Center grade Road

at 14. 77 Cent SEENey Highway

at 16 90. 4 = STA 2

at 26. 24. 7 = short 15. 3 = F

East of corner of Cornes to SEC 5. 6.  
46. 3 = Foot

thence set  $\frac{1}{16}$  S point South 7.  $\frac{1}{2}$  =  
set west 2  $5\frac{1}{2}$  = on true line

put up a flag on point and  
went South on Hall and back sight  
on the  $\frac{1}{4}$  S point and run north  
on a true line OVER the line closer  
at 7. 25 =



T138. N. R 30 W S 6 - Oct

BEN. Clark Roy Rose

begin at the  $\frac{1}{4}$  S bet SEC 6.1  
 on Range Line and run  
 East on a quarter line 0814 -  
 at 7.63 Cross Thompson Road  
 at 9.15.50 a barbed wire fence  
 and enter clover field  
 Oct 14.19.20

at 11.32.13 = set a trap  
 at 11.70. STA 1  
 at 12.76 - Cross a barbed wire fence  
~~at 24.09.7 = set traps~~  
 at enter clover pasture 1644  
 leave at 20.70  
 enter Jack pine  
 at 21.79.7 = STA 2  
 at 22.8.0 enter Hay Bug  
 at 24.59.7 = set traps C. 45. cor.  
 at 27.80 - leave enter brushy pine  
 at 30.31.4 = STA 3  
 at 36.10.9 = STA 4  
 at 40.00 enter clover field



T138N. R30W S6

Continued

At 44<sup>00</sup> line close into Brush land  
at 48 96.8 = STA 5-At 50. 84.5 Enter North South  
Line but SEC 5.6South of the granaries line  $\frac{1}{4}$ S  
32. FootThere set over points and run  
a true line back West on a curved  
back on the  $\frac{1}{4}$ S to SEC 6.5-There set a  $\frac{01}{4}$ S a Iron Pipe 5 Foot  
2 in Diameter Drive the same in  
ground 4. Foot and bored a  
shroud stone around post  
this post, East of the Iron post  
for the  $\frac{1}{4}$ S but Sec 1.6. on Range line  
24.59.7 =

True line closes at 8.14 =

$$\begin{array}{r}
 1132.3 \\
 1320 \\
 \hline
 2452.3
 \end{array}$$



T138NR30W56

16

Oct 15 1920 Ben F. Cloth Roy Rose  
in Kinney and his men  
began at the Estable 1/6 post on  
south side SEC 6 bet 6.7 on west  
half at a iron post and run  
NORTH on a true 1/6 line to  
at 13.24 Foot set a 1/6 point  
at 26.48. Closed on the iron  
post on the quarter line

---

13.8.2

13.2.4



## T138 N. R 30 W SEC 6

Oct 17 19 20 RENTON RAY R. ALL

Set the 16 post on North and South  
45 line on North2 iron pipe  $2\frac{1}{2}$  Foot Long 3 in diam  
put two 60 penny spikes in bottom  
end boarded in hole with a post  
sides set the same in ground2 Foot put in stone and clay sand  
around post and lamp drawn  
and the column mattress trees  
eg pine 7 S & 38 E 20.5 = Foot  
4 pine 5 S & 23 W 36 Foot

Oct 17 19 20  
 Thence went to the 16 post  
 on SEC line bet 55.6. Equal Dist  
 bet the 45 and the corner post for  
 the corner to S. 5.6. 31.36 in tower line  
 set a iron pipe  $2\frac{1}{2}$  Foot Long  
 3. in diam set the same in  
 put two 60 penny spikes in  
 bottom end attach a hole with a  
 post sides set on post put in  
 stone around post lamp with  
 clay

Witness a M I R R Cor Bird  
 SOUTH 58 W 20 F Dist



-18

T138 N R 30 W SEC 6 Oct 17 1920

thence went to the  $\frac{1}{4}$ S point but  
SEC 56 dug a hole with a post  
wager put 2.60 penny sythe  
in bottom and set the same  
in ground two foot put in  
stone, and clay around post  
this post is  $2\frac{1}{2}$  Foot long 3 in diam  
the old government witness tree  
is blowed down with the  $\frac{1}{4}$ S RT in  
it stood in a field the same and distance  
of from 10S. & 56 East 21.8 = Foot  
thence made a new witness  
a stone 3 by 4.5 & 4.5 W Distance 27.3 = Foot  
Hole in stone

---

Oct 17 1920 Born F. Claff Roy Rose  
thence went to the  $\frac{1}{4}$ S point in Range  
Line but S to S 1 set a from ppe  $2\frac{1}{2}$  Foot  
Long 3 in diam dig a hole with a  
post-wager put 2.60 penny sythe  
in bottom and set the same in  
ground  $2\frac{1}{2}$  Foot put stone  
and clay lamp down  
this corner sets equal Distance but the  
SEC for 1. 12.67 in the  $\frac{1}{4}$ S N lot S 6.1  
in the middle of a graded road



T138.N. R 30 W S 6

19

Oct 15 1920

Ben Clatt Rwy. Road

went to the  $\frac{1}{4}$  point bet S. 6. 7.

on East side of road and set a  
given pipe 4 Feet long 2 in. Dia  
bored a hole with a post auger  
put 2 40 penny spikes in bottom  
and put in pine knots on spike  
lamps down thru the S. set equal distance  
bet the  $\frac{1}{4}$  S and the SEC corner to  
S 6. 5. 7. 8. and on true line

thence went to the  $\frac{1}{4}$  point bet  
SEC 5. 6 on south side and bored  
a hole with a post auger  
put 2 40 penny spikes in bottom  
and of pipe 4 Feet long 2 in. Dia  
set in ground 3 Feet part in  
stone sand lamp down had  
thru post sets equal distance  
between the corner sec 5. 6. 7. 8.  
and on true line on the  
west side of a grade ROAD  
in Dutch



20

T1 38. N. R 30 - Oct 18 19. 20

Ben F Clark Rwy Road  
begin at the Estable from post  
for the  $\frac{1}{4}$  on East and west  
quarter line 11.32.3 = East end  
of the  $\frac{1}{4}$  S but 1.6

and run North on a line line  
87.6 =

at 32 F enter State Road

at 353 enter Bay & W

at 10 10 line into brush

at 12 1 3 = STA 1

at 13.16.2 = set a long point  
for the  $\frac{1}{4}$

Oct 18 19. 20

thence begin at the  $\frac{1}{4}$  S part

a from post on Range line  
13.24 Foot North of the  $\frac{1}{4}$  S part  
and run East on line line

8813 =

at 100 enter Hay Bay

at 5.25 line into brush

at 9.4.5 STA 1

at 11.35 long point or center



T138N. R 30 W SEC 6  
set 19 19, 20

21

Bent Clark Rop Rose  
begin at the  $\frac{1}{4}$  point on  $\frac{1}{4}$  line  
on North  $\frac{1}{4}$  16 35 Foot East of  
the  $\frac{1}{4}$  point post 0813  
at 1.786 STA 1

at 13.39 the iron post on the  
North South  $\frac{1}{4}$  S line closed on  
the center of the iron post

---

thence begin at the  $\frac{1}{4}$  point a iron  
post on north South  $\frac{1}{4}$  S line  
on North half and run East  
on a true line 08.25 =  
along the side of Hardy Cuddy  
post set on ground  
at 1050 Enter State Road  
at 26.60 Enter Cent M I R R  
at 26.1 = the  $\frac{1}{4}$  point on SEC line  
but 35.6 on North  $\frac{1}{4}$



Jan 31 1920

T138. NR 30 NO 22

Ben F. Clark Bay Box Bay Devere  
began at the MC point on west  
shore from Mt Lotz island east  
on North Boundary SEC 6

to the SM point on east side  
Lotz the distance is 24.19.6.

Measured on east

at 19.23 M. 1 P. 13

at 24.34.7 the corner to SEC 6. 7  
on Texas Line

total distance is 50.64 feet on  
the North Boundary sec 6

thence come west and set the  $\frac{1}{16}$  point  
west  $5\frac{1}{2} =$

thence set,  $\frac{1}{4}$  S west 33.7 =

set North  $\frac{1}{16}$  point bet west  
 $50.5\frac{1}{2} =$

South  $\frac{1}{16}$  16.8.  $\frac{1}{2} =$  set west

thence pull up a iron post

for the  $\frac{1}{4}$  S set the same

west 33.7 = from the same

down in a bag 4 feet

on foot above the ground



Feb 1920 T138 NP 30 W <sup>23</sup>

By Box Bay Deane Box Clerk  
Made the following witness line  
for SEC

Jack from 12 March 1 1994  
J from 8 S to 39.30 - East 199.7-

Measure measured East on the  $\frac{1}{4}$  S line  
at 26.59.7 the  $\frac{1}{4}$  S but S to 50 and S to S  
Measure to S at 13.29.8  $\frac{1}{2}$  =

Measure measured West on the  $\frac{1}{4}$  S line  
begin at the  $\frac{1}{4}$  S a from post 5 East  
2 in Deane  
at 13.20 put a line to  
at 11.8.5

The  $\frac{1}{4}$  S but to S 1 m. R line  
a helicopter to S 35 W 40.1 =

Measure set a from 1 M at 11.7.5 -  
West of the  $\frac{1}{4}$  S but S to S 1  
watch the forty 13.9.2 =



Feb 1 1921

24

Run F Cloth Run Base

Box Clewue,

begin at  $\frac{1}{4}$  43 observed

Most on the  $\frac{1}{4}$  3 line 1

at 1320 set a length  $\frac{1}{4}$  point

at 24.35.4 the US  $\frac{1}{4}$  S Line

but 56.57

4.6 = short 1

thence set the  $\frac{1}{4}$  point

North at 17.7 = set west 16.8  $\frac{1}{2}$  =

---

begin at the Estible  $\frac{1}{4}$  a line  
post on North west side

See 6. and observed East

on the Line 11.09.2  $\frac{1}{2}$  =

observed on East 13.14.3 =

Full Distance 24.23.5  $\frac{1}{2}$  =



26

Feb 1 19. 21 T138. N. R 30m

See 6

Thence Begin at the  $\frac{1}{16}$  S in North to Pole  
and East the distance of  $265 - 0.5 =$  to the  
end  $\frac{1}{16}$  post in S line

Set S. 6. 5 at MI R.R. in STATE Road

Thence Set a iron pipe  $2\frac{1}{2}$  long

3 in diam for the  $\frac{1}{16}$  Post

on N S  $\frac{1}{4}$  line in North Half

A pole 4 S. 6. 2 East 44 Feet

A pole 7 S. 02. 30 West 34. 4 =

Set a Mark Stone around post



T 138 N. R 30 W S 6 26  
Feb 2 1921

Ben F Clarkt Run Rose Ry Devere  
begin at the  $\frac{1}{16}$  Post 1 M

on South  $\frac{1}{16}$  line but S 6.1

run East on a  $\frac{1}{16}$  line 2817-

at 20 a plough field

at 9.15 Enter field onto Brush

at 11.26.6  $\frac{1}{16}$  S STA 1

at 13.21 a Barre mine fence crossed

at 18.13  $\frac{1}{16}$  = STA 2

at 22.00 Enter a Hay Bog N. S

at 24.49.8 Enter  $\frac{1}{16}$  point on the N. S  $\frac{1}{16}$  line

at 24.49.8 STA 3

thence Begin at this  $\frac{1}{16}$  point allow 2

at 32. a barre mine fence N. S

at 50.30 leave Bog Enter Gadsden

at 9.97. STA 4

at 13.20 set a temporary  $\frac{1}{16}$  point

at 21.1.9. STA 5

at 24.46.5 Enter the  $\frac{1}{16}$  Post

but S. 6.16. a line on page 4 & L

9 Foot North of the post

for the  $\frac{1}{16}$



T 138 N. R 30 at 27

thence set the  $\frac{1}{16}$  post  $2\frac{1}{2}$  feet  
set south  $4\frac{1}{2}$  feet

Run F. Clark Bay Rose Bay Devere  
begin at the  $\frac{1}{16}$  a iron post  
on sec line set SEC 67

and run North on a true  $\frac{1}{16}$  line  
over @ 7.24

at 13.20 the  $\frac{1}{16}$  post tied on tack

at 26.41.6 = the  $\frac{1}{16}$  S on the  $\frac{1}{16}$  north  
line thence run on north @ 7.30

at 39.63. Enset State Road  
on the point for the  $\frac{1}{16}$  or

at 5.2.72.2 =

the  $\frac{1}{16}$  point on true line

---

Feb 3 19 21

Run F. Clark Bay Rose and  
Bay Devere,

Went to the  $\frac{1}{16}$  on North to SEC  
bet 6.5 pulled out the old post  
and set it North 8.3 = foot

a iron post  $2\frac{1}{2}$  long 3 in diam.  
with a hole and set the same  
level with top of ground



TI 39 N. R 30 W 5 or 28

Bm F Clark Ray R on Ray Deers  
went on the STATE ROAD  
to the  $\frac{1}{16}$  Point and set a iron  
pipe 4x2 Feet on a true line  
and  $13.25.2\frac{1}{2} =$  west of the  
 $\frac{1}{16}$  post on SEC Line but 5.6  
set the same level with  
top Road a telephone post  
for a witness

TP 10 South 39. W. dist. 42.2 =  
the angle of the STATE Road  
at this Point is  $8.45 =$  angle

---

Bm F Clark B R on R Deers  
went to the  $\frac{1}{16}$  corner on  
North side SEC 6 on NE  $\frac{1}{4}$   
 $4.36.8 =$  East of the USMC  
and set a iron pipe 4x2 line  
set north  $1.5.1\frac{1}{2} =$  Feet  
on a true line but the  
USMC on the East side  
from Mt Lake and the  
US Corner to SEC 5.6



T138 N. R 30

29

Then we went to the MC Lands  
on west side Pine MT Edge  
and set a game post 4 X 2  
two feet in ground  
with a round stone around  
post

Made a witness tree  
a rook 4. N. 45 W. D. 4. 7 = Feet  
this corner sets east of the  
Frown Line 7. 93. Feet  
these are two game stamps  
that look like the old  
BT but some what different

---



32

T 138 N R 30 W

Ben F. Clark B. Rose  
By Deed set a  
to a iron pipe  $2\frac{1}{2}$  by 3 in  
from the  $\frac{1}{4}$  S on the East and  
West of water line.  
at 11.17.6 East of the  $\frac{1}{4}$  S in  
post for the  $\frac{1}{4}$  E line to  
see line but not on  
STATE line  
a Lelybena Post for water  
west to Dist. 44.4 =

---

Feb H 19.21

then went to the  $\frac{1}{4}$  D and  
on South west  $\frac{1}{4}$  and set a  
iron post 4x2 in ground  
level with top

this post sets East of the  $\frac{1}{4}$  from R  
on Range line but 31.7 the  
Dist. of 11.26.6 and on line line  
shall the follow witness

a 4 pine 8. South & 54 E D 38.3 =  
2 pine 10 South & 51 W - 51.7 =



T138 N. R 30  
Feb 4 1921

33

Bene F. Clark Ray Rook R. Devore  
went to the  $\frac{1}{2}$  point on North and  
South  $\frac{1}{2}$  S line and set a iron post  
4x2 one foot out of ground  
this corner sets west of the US  $\frac{1}{2}$  S  
bet S. 6. 7. 13. 7. 7 = Foot  
No trees for witness  
Corners in open marsh Hay madden

---

thence went East on the  $\frac{1}{2}$  line  
to the  $\frac{1}{2}$  point and set a iron post  
4x2. Put the same in ground  
3 Foot this post set west of  
the  $\frac{1}{2}$  on the SEC line bet 5 S to the  
Dist. of 13. 21  $\frac{1}{2}$  -  
and made the Full on witness  
4 pine 6 N to N 46 East 24. 2 =  
4 pine 6 S to S 50 West 20



T 138 N. R 30 W 34  
5 sec

Bert F Clark Rm Rose R Dewux  
went north to the  $\frac{1}{4}$  point and  
set a iron pipe 4 x 2 Feet in  
Drill a Hole with a Chain Drill  
set the screw in ground 3 Feet  
and Made the Following witness  
of pins 12. South 84 West 60.8 =  
was pin 8 North 850 East 70.6 =

This finishes all the corners in  
SEC 6. T 138. N. R 30 W 6-P. 34



T138 N. R 30 W  
Feb 6. 1921

36

The angle of the State Road  
passing thru SEC 6  
Begins at the  $\frac{1}{4}$  a from post 1309 =  
South of the SEC corner to 5.6  
and running the distance of 13.25  $\frac{1}{2}$  =  
placed was a iron post in center  
of State Road the distance

1325.5

244.8

1570.3

then on west on the same angle

the distance of 2.44.8 =

thence S  $\frac{1}{4}$  53 East D 5.33 Feet

South  $\frac{1}{4}$  13 East Dis 8.29.9 =

South  $\frac{1}{4}$  47.30 E

1.91.3 =

South  $\frac{1}{4}$  15 West D 1780 on the north South  
 $\frac{1}{4}$  S Land at 178

being North of the  $\frac{1}{4}$  S 1133.4 ft.

South  $\frac{1}{4}$  15 W 8.79

thence west to

passing the  $\frac{1}{4}$  line 6.15.5.

North of the iron post for the  $\frac{1}{4}$  S  
31.6 =

at 17 33.3 the  $\frac{1}{4}$  S let S. 6.1  
on Range land

Ben F Clark Surveyor

Ray Rose and Ray Derrill



# Blue Heron Rodge

38

Λ@ 4 BS 5

81-39-44

163-19-26 81-39-43

Λ@ 2 BS 4

261-07-30

162-14-54 261-07-27

Λ@ 5 BS 6

155-53-88

311-46-10 155-53-00

Λ@ 6 BS 7

99-34-16

199-08-24 99-34-12

Λ@ 7 BS 6

8 187-16-02

14-31-58 187-15-55

Λ@ 7 BS 9

143-40-48

287-21-10 143-40-35

Λ@ 9 BS 7

163-10-54

326-21-34 163-10-47

Λ@ 10 BS 11

139-56-50

279-53-24 139-56-42

Λ@ 8 BS 7

85-48-42

171-37-30 85-48-45

Λ@ 8 BS 12

144-50-50

289-41-32 144-50-46

230.77

70.340

~~1242.10~~

~~222.590~~

1242.10

378.590

230.765

1241.855

346.70

105.62

1178.08

359.409

346.285

1178.984

535.00

163.030

580.84

177.652

534.912

580.1589

320.02

320.02

97.554

172.36

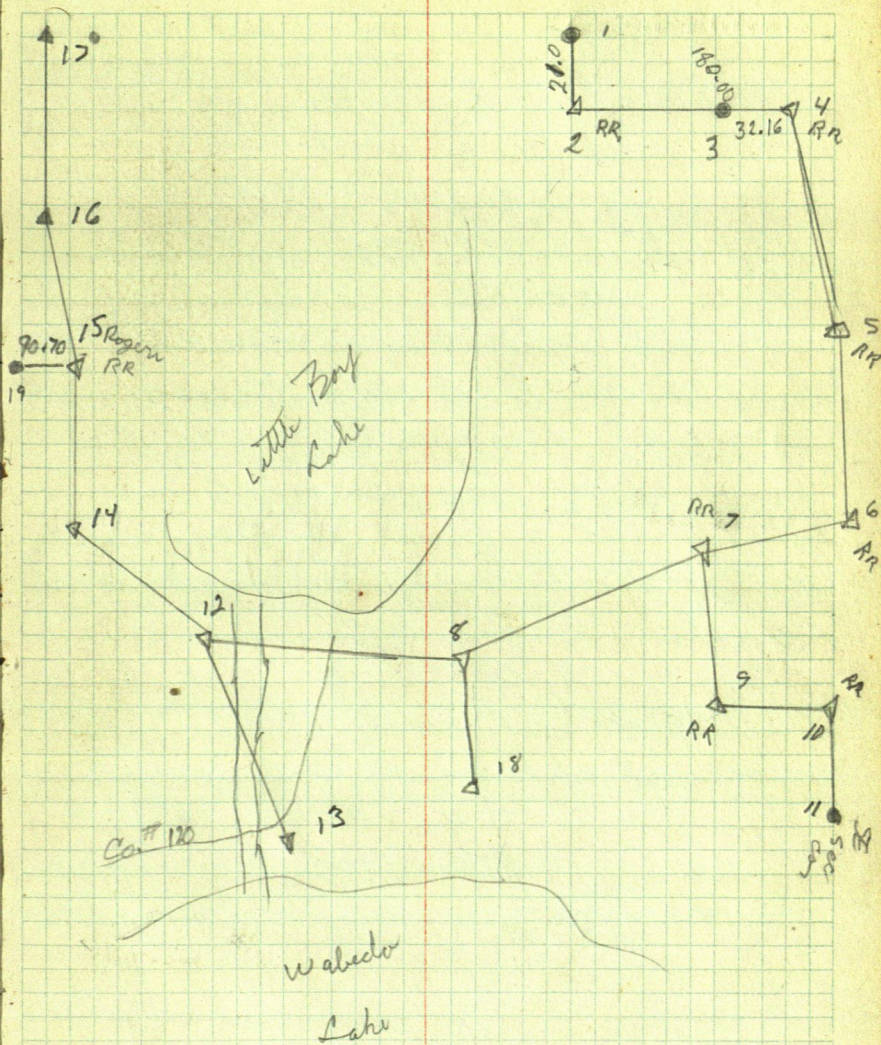
52.8541

320.0077

171.887

See page 69



Paul  
Ken



T141 N. P. 2700 405 miles  
157.5-

Jan 7 1921

Rail Road 4th Wagon  
John Thompson  
Begin at the 4<sup>th</sup> S bet 332 and 33  
on iron post set by the  
General Land office marked  
4<sup>th</sup> S. 08.5 =

Stone run north on the  
Center of Engone River Road  
County Road

at 41121 longer long

14.1 Foot a iron post on Road  
at 27.97.5 on iron post set  
by the US General Land office  
there set true to point of  
13.98.7 $\frac{1}{2}$  = Foot



NO 41  
T141 N. R 27 W  
Jan 8 1921

beg at the government M.C. on  
set by the general Land office  
and run east on same to line  
on South  $\frac{1}{2}$  Sec 32,  
wa. 15.4 = South of the T6S Point  
corner in township. Road  
thence measured back west  
at 22,82.5 = Ender East Bank of  
Little Endgusner  
at 38,79.5 = cross lake to a  
iron post  
Set by the US General Land office  
for the M.C. on the North T6S  
line on the west Bank of  
Little Endgusner Lake  
thence set a correction point  
east at 12,93.1  $\frac{2}{5}$  = Feet  
thence North 40  $\frac{2}{5}$  =  
thence set up my transit on  
Hick and Bicknight on  
the government iron post  
and run too on a true line  
8.7 = and tied on the nail  
on the  $\frac{1}{4}$  Point  
on North half Sec 32 bet S32.33



thence Come back south to  
4.12 Foot North of the  $\frac{1}{4}$ S Corner  
bet SEC 32.33 this is the corner  
set by the Surveyor for the US  
General Land Office a iron  
post with a Brass top  
at 4.12 Foot North of this  
corner and in a true line bet  
this  $\frac{1}{4}$ S and the  $\frac{1}{2}$ S Corner  
North Equal Dist bet the  $\frac{1}{4}$ S  
and the SEC Corner to S 32.33  
28.29.

thence at this point 4.12 Foot  
North of the  $\frac{1}{4}$ S Corner extending  
& turned a right angle and  
run west. 90 Degree  
as Requested by the Landowner  
John Oangen Sievert Bestness  
According to the Deed that  
Mr John Oange holds



43

June 10 1920 T141 N. R 20 W

begin to measure east on a  
line begun 4.12 Foot North of  
the US  $\frac{1}{2}$  S of SEC 32.33.

at 7.16 STA 1

at 13.20 set a  $\frac{1}{2}$  point

a 16 11.  $\frac{6}{2} =$  STA 2

at 21. 56. 7. STA 3

at 24 18. 3 = enter end of line

thence Line to the  $\frac{1}{2}$  line where  
it meets end of line look

set a grain post 4 Foot long

2 in diam Drive the post in

ground 3 Foot one Foot above

and made the following witness tree

N post 6. N. & 21. 15 E 20 Foot

N post 10 S & 45. Dist 10. 5 =

thence went east to the  $\frac{1}{2}$  on SEC line  
at S 32. 33. set a grain post 4 Foot 2 in diam

and made the following witness tree

N post 14 N. 37. 30 W 57. 2 =

N post 9 S 75. 30 E 40 50

set a grain post  $2\frac{1}{2}$  Foot long

3 in diam Drive the post in

Road level with top of grass



44

T141 N. R 27 W SEC 32<sup>nd</sup> Jan. 10 1921

thence set a iron pipe 4 Foot  
Long  $2\frac{1}{2}$  in diam at 4.12 F  
North of the 45 but 332.33  
in County Road Leule  
with top of grade  
thence went west on this  
line but John Vongen on  
Severt Beckness to Findgona  
Lake and set a iron pipe  
4 Foot Long  $2\frac{1}{2}$  in diam  
above the same in ground  
3 Foot at the shore of  
Lake, thence went out  
on ice and backsight  
on the line and turned  
a Rightangle and measured  
South the Distin of 4.12 Feet  
and and set up my transit  
and backsight on Flag and  
turn a right angle west and  
on the R-S MC on west Bank  
of Lake on the East end west  
45 line this corner was set  
by the US Land office surveyor



48

Township 14 N. R 28. W 5 P. ells  
 Jan 11. 19. 20 SEC 22

Ben F Clark Roy Rose Drive  
 Down to Mr. J C House's place  
 had Dimes thence went up to the  
 MC wooden post 4 paces marked  
 MC with a led pencil and too  
 pitures tree BT made with loop  
 tacks corner set by EB Horst.

thence set up my transit in  
 the Hub on a High Hill South  
 and Bicknight on MC post  
 thence sight South on a wall  
 on the Hub South and run  
 South on his true line 8.6  
 to wabed Lake 2 foot lot  
 22. 23. 26. 27 a group post  
 as lines

thence measured North  
 at 161 North Land P R R E W  
 at 621=8 STA 1  
 at 7.41 Gen Redell Road  
 at 1100 Lake arm Boy Lake  
 at 13.20 set a trigon 16 S point  
 at 16.86 low arm Lake  
 Lake Brush head  
 at 19. 23. 6= STA 2



Jan 12 19 21 SEC 22.

At 26.40 set a  $\frac{1}{2}$  S point

at 26.74.6 STA 3

At 37.62 MC a nodular post

at 37.62 under Bay Lode

At 59.60 set a  $\frac{1}{2}$  S pointat 59.2.80 set a  $\frac{1}{2}$  S point

Cores to SEC 14.15.22.23 on ice

thence set up my traverse

and right across Bay Lode

to the MC as comes on North

shore Bay Lode a green post

the noble changes. Now Degree

West watch is 56

thence set  $\frac{1}{2}$  S post on a line

line between the two MC cores

watch 56. and from the MC

on South shore Bay Lode to

the core S22.23.26.27 is 58 Drive



50  
T 140. N R 28 W 5 R etc,

Jan 13. 19. 21

Run F Clark Bay Base C houses  
begin at a given post for  
the cones to SEC 15. 16. 22. 21 and  
run east on a true line 7.5 =

at 2. 26. Enter Cranberry Bay

at 8. 24 head and Lake Lake

at 13. 20 Set a trap 16 point

at 14. 26 Level Lake Lake Bridge

at 17. 59 2 ends Hole SEA 1

at 20. 26 Enter N.L. Pine R R bridge

at 20. 81 Enter Bay Lake at

at on MC Cinders post 51 45

at 26. 40 Set a trap 45

at 39 60 a trap 16 S point

at 51. 57. 3 = trap SEC. Crag

at 52 80 Set point S. line

at 7500 four Ring Lake

Enter Inghat Bonham East

side Lake Search for MC

but Did not find any

so we kept on same Road

at 79. 20 <sup>at 77 2951</sup> <sup>STA 2</sup> set a trap 45 point

at 81. 61. 3 = we found

a loty state marked

4800



Set by K. H. House  
 and Ben Clark on house  
 the new west from a  
 N.S. 4 S. corner at McTherby  
 Lake we find the Distn  
 are 1.29. 6/1. 3 = Feet short  
 1.23. 6 = Feet North Boundary S 22. 52. 50. 6 =  
 Thence Come Back west  
 to the corner of Sec 22. 23. 14. 15  
 Set the corner west 49. 4 = feet  
 Thence went west to the 4 S  
 Set 24. 7 = West  
 Thence on west to the 16 S and  
 Set the same west on a true line  
 12. 3 1/2 =

Thence went home to  
 Mr. Hausen Hausen



T140 N.R 28 W 52  
Jan 14 1920

Ben F. Clark Ray Row  
GC Hansen began at the  
lower sec 22. 23. 26. 27 a firm  
first end Run west on a  
true line 0.6.45 =

At 1.89 STA 1

At 2.40 Enter mabelo lake

At 13.20 Set a long 45

At 26.40 Set a long 45 point

At 32.15 Leave lake into brush

At 32.48 3 = a firm post for

the MC corner

At 39.14 3 = a firm post

At 39.60 Set a long point

single from MC must change to

0.7.45 =

Jan 15. Measured on west

At 40.7 = STA 4

At 44.78.2 = STA 5

At 48.79 STA 6

At 52.26. Feet the corner to

Sec 21. 22. 27. 28 come good

a good point 54. Foot short

West of the firm post 11 =



Thence went back east end set  
the west  $\frac{1}{4}$  East 40.5 =  
the  $\frac{1}{4}$  S. gas east 27 on ice  
the east  $\frac{1}{4}$  gas east 13.5 =  
end on true line on ice

---

Township 140 N. R 28 W. 5 P. M. S. 22.  
Jan 15. 19. 21

Ben F Clark By Rose C. Hansen  
went to the corner SEC 15. 16. 21. 22  
a iron post and set up my  
transit and backsight on a  $\frac{1}{4}$  post  
on the true SEC line bet S. 15. 16.  
and run South bet SEC. 21. 22  
Mon 17. 19. 21 Ben Clark B. Rose C. Hansen  
run in South bet 21. 22 to 7. 7 =

Jan 18 Manned South  
at 12.5 4 miles Bug  
at 5.99 full hole brush end  
at 18.83 STA 1  
at 18.37. 2: STA 2  
at 24.55 STA 3.  
at 26.40 set a temporary 45 point  
at 28.99. 8 STA 4.  
at Corried to page 53



T 140 N R 28 W SEC 22

ST 37.4. 7 = STA 6

ST 39.96. 7 = STA 6

ST 44.16 - Enter Lake

ST 52.5. Low Lake Enter Camp

ST 53.13 the corner to SEC 21. 22

27.28 East of the line Post  
4.2 = Foot

the west side SEC 22 are large

33 Foot

There is set the the  $\frac{1}{4}$  S point  
South 16.5 =

Set west 2.1 = Foot on tree

Line &amp; 7.4 = true line

2 mile 22 are short 37. Foot on the  
East side the total length are 62.43 Foot

the total length on west side are 53.13 Foot

the total distance on North side SEC 22  
are 52.30 = 6 =

the distance on South side are 52.26 Foot.



T140 N. R 28 W <sup>54</sup> 5. P. Miller  
Jan 18 1920

Thence shot begins drilled with the  
North East Corner SEC 22

Ben F Clark Roy Rose measured  
on North across Roy Lake  
Begin at 52.80 Feet North of the  
US Corner SEC 22. 23. 26. 27

Set 1.24.47.5 = to the US MC a iron  
post  $2\frac{1}{2}$  Foot Dia with a cap on  
top witness tree a pine stump  
from 4. N. 16 W. 10 fence

White Oak 9. N. 57 E. 40 fence  
this MC set South of a  $\frac{1}{4}$  S 10 Change  
are 6. 60. Feet.

Thence corner of SEC 14. 15. 22. 23.

South 37. Foot

Set the  $\frac{1}{4}$  S but sec 22. 23 South 18.5 =

Set East 61  $2\frac{1}{2}$

Thence set the the 16 Point South 27.75 =

North  $\frac{1}{6}$  set East 92.8.  $\frac{3}{4}$

Thence set the  $\frac{1}{4}$  S but sec. 15. 22. South 18.5 =

Thence set the  $\frac{1}{6}$  - - - - - 9.25 =

D to East 29.6.75 =

Thence set the MC NO. 32 on the true line

29.6.14 -  
61  $2\frac{1}{2}$  -  
90 6



55

T140 N. R 28 W 5 P other  
Jan 19 1920 Rain this morning  
Ben F. Clute R of Rose  
went to the 45 point and  
set a firm Drift Bolt  
2 feet long 1 in. square  
about in ground one foot  
there is the 45 set SEC 21.22  
sets on true line and  
by level distance but the two SEC  
corners

---

Corner sec 14.16.22.23 sets  
West of Range line 124.5 =  
The corner to SEC. 14.16.22.23  
sets in Bay Lake north of the  
MC. 14.90.8 1/2 =  
there set a MC two witness line  
a claim & S. 9.30 = East 24.5 =  
a claim 10 S. 23.30 = West 3.2 =

thence went south and set the  
45 point south 18.5 = at 6. 2/2 = east  
on true line & 6.15 =



56  
T140 N. R 28 W 5 P. 11/2  
Jan 20 1921 SEC 22.

Begin at the  $\frac{1}{4}$  S point for the  $\frac{1}{4}$  S  
bet SEC 22.23 and run west  
on a quarter line VER 7.7=  
to the  $\frac{1}{4}$  S bet S 22.21  
was 13.4: South of the center  
of Post line line 0-6.58=



T 140 N. 1328 <sup>57</sup> W Sec 22  
Jan 21 1921

Ben F Clati Bay R. on  
of House Begin at the  $\frac{1}{4}$  S  
Point for the  $\frac{1}{4}$  S but SEC  
22. 27 in make the Lot  
and from North on a quarter  
Line @ 6.40 =

Jan 22 1921 I set out west of  
the  $\frac{1}{4}$  S. in Bay Lot 3 Feet  
thence set the  $\frac{1}{4}$  S East  $1\frac{1}{2}$  Feet.

Set NORTH 6.7 = where the true  
quarter lines cross each other

thence made the full corner witness

N. 0° P. 18 South @ 8.30 = East 2.96

a pine pull in 10.5 @ 20 West 1.75

a clam 30. N @ 63 West 4.42



T140 N.R. <sup>68</sup>28 W SEC 22  
Jan 22 1921

Ben F. Clark By B.M.  
begin at the 45 set S 22.28 and  
measured west on a separate line

at 181.1 = STA 1

at 389. STA 2

at 770.4 = STA 3

at 870 Enter Bay Lake

at 13.20 set a temp  $\frac{1}{16}$  S point

at 16.85 Enter a island one block Land

at 18.7 Leave island Enter Bay Lake

at 26.17.4 = C/45

thena begin at the C/45 22 and turn  
on west on same line

at 3.75 Leave Bay Lake onto Bank

at 3.95 Enter Northland from corner B.P.

at 4.38.8 = STA 4

at 10.75.4 = STA 5

at 13.8.7 = set a temp  $\frac{1}{16}$  point

at 26.17.4 = the  $\frac{1}{4}$  S point, S 22.21



T140 N. B 28 W 59

Jan 22 19. 21

Bent Clark Bay Rose  
begins at the N B Point on  
Washington Lake but 22. 27  
measured North on grade  
line

at 6. 52. level Lake and ante field

at 7. 95 STA 1 in Frank Hardy  
House at the top Kitchen

at 11. 9. into river but measured  
and Bay Lake

at 14. 53. Enter plotting Bay

at 18 level Bay into River

at 21 20 level River into Bay

at 22. 62 Enter North Land for  
Camp near R. B

20 Foot East of a Bridge

at 23. 2: 7: STA 2

at 23. 30 Enter Bay of Lake

at 24. 26. 30 = 48

Begin at 45

at 5. 56 level Bay of Lake

Enter timber



Continued <sup>60</sup> from page 59

at 6.37.65

STA 3

at 9.35- Enter Bay Lake

at 10.00 Leave Lake Enter trunk

at 11.17 Leave trunk Enter - - lake

at 13.40 Leave Bay Lake Enter trunk

at 15.71

STA

4

at 18.41 Leave trunk Enter Bay Lake

at 24.30 Fast the  $\frac{1}{4}$  S at 22.15-



61  
T140N R 28W Jan 24 1921

Run F Clark Roy Rose C Houses  
begin at the  $\frac{1}{16}$  S point but SEC 22.27  
on South East  $\frac{1}{4}$  on water hole Lake  
and run North on a  $\frac{1}{16}$  line  
VER 626.

measured North on a true  $\frac{1}{16}$  line  
at 500 Leave water hole Lake  
at 522 set a iron pipe 2 1/2 foot  
Long 2 in diam and made a  
mound stone around post  
at 60.6 Enter a major Road  
at 750 STA 1  
at 850 STA 2  
at 968 Enter North Land pro RR  
at 983 set a iron pipe 2 1/2 foot  
Long 2 in diam  
at 1030 Enter Bay Lake  
at 26.25.27 the  $\frac{1}{16}$  point on  
the East end west quarter line  
on East half



62

Jan 25 19.21

Ben F Clark Run Rose of Humber  
begin at the  $\frac{1}{4}$ S post on SEC line  
cut S 16.22 on North west  $\frac{1}{4}$ S 22  
and run south on a  $\frac{1}{4}$ E line  
to 6.62 =

and hit the Nail on the point  
for the  $\frac{1}{4}$ S post on East and west  
quarter line

Jan 26. 19.21 T14 N. R 28 W S. 22

thence measured East on same  $\frac{1}{4}$ E line  
at 3.60 from Lot Center Bench  
at 6.45 5 = STA 1  
at 13.20 set "



no 63

Jan 28 1921 7140 N R 28 a

Ben & Clark Ray Ray  
set the  $\frac{1}{4}$  S. MC on north south  
aparture line at 6.52 Foot  
north of the  $\frac{1}{4}$  S but S 22 27  
on line on north side  
a Rail Road Spite 6 on long  
and made two notes  
a Clam 8. N. & 28 East D 82 Foot  
a ash 5 N & 50 west I 12 - - -  
set a iron Pipe 5 Foot long 2 in Diam

then set a wooden wedge  
post 15 Foot long 4 in diam  
marked the same to S 22  
then came on north  
and set a rail Road Spite  
6 Long Drive the same on  
ground  
marked a survey pole  
at  $\frac{1}{4}$  S MC

Course 15 20 East 10 Foot



thence went to the arm  
 bog lake on sec line bet SEC  
 22.23. 16.86 North of the  
 from lanes SEC 22.23.26 27  
 set a ash post 6.5 long 3 in  
 square drove the same in  
 ground 3 feet  
 marked the same SEC 22.23 MC  
 witness tree as follows  
 ash 6 N & 50 West Dustin 19.5 = Feet

---



65  
T140 N. R 28 W S 22

Ben F. Clark Ry River  
went South across arm Ry Lake  
on SEC line bet S 22. 23  
and set a MC 5 11<sup>00</sup> feet north  
of the iron corner to SEC 22. 23. 26. 27  
a Oak Post 6. Foot long 3 in S  
marked the same with a screw  
iron T140 N. R 28 W  
Sec 22 23 MC on trees  
for witness

---

Thence went north to the  $\frac{1}{4}$  S  
Point to Leeder post 2 Foot long  
and made a witness tree  
Waring River 7. S. with 36. W D 37. 4 =  
marked  $\frac{1}{4}$  S 22.  
a mound stone around post



66

June 29 1921 T140 N. B 28 in

Ben F Clark By Base  
Went to the  $\frac{1}{4}$  S but sec 22. 21  
a green Drifted 2 Feet long  
made live cottonwood tree  
N pin 6. S.  $\theta$  45. East. Dist. 15 Feet  
N pin 10 N  $\theta$  35 East 30. 4 =

---

Thence went east to the  $\frac{1}{16}$  point  
and made a cottonwood tree  
N Base 5. S.  $\theta$  45. East 7. 4 = F

---

Thence went north to the  $\frac{1}{16}$  on  
the NW  $\frac{1}{4}$  S 22  
and set a  $\frac{1}{16}$  point with a cottonwood tree  
a NW pin 3. N  $\theta$  50 West 8 Feet



67  
T140 N R 28 W

then a set a  $\frac{9}{4}$  SMC

Pyrite pit 3 Feet Long 3 in S  
with the following values  
pyrite 7 N. + 32. west 10.5 =  
in pine 6 S + 50 west 21.6 =  
center 522 in B of Lake the  
Distance of 3.81 Feet

Record No. 487.



## Blue Heron Lodge

See Page 38

T@ 12 BS 8

24-20-18

48-40-48 24-20-24

T@ 12 BS 14

176-49-06

353-37-48 176-48-54

T@ 14 BS 15

140-28-42

280-57-00 140-28-30

T@ 15 BS 14

16 181-46-20

08-32-18 181-46-09

92-43-56

19 185-28-00 92-44-00

T@ 16 BS 15

175-24-54

350-49-42 175-24-51

T@ 13 BS 12

176-39-30

341-18-40 170-39-20

T@ 20 BS 13

129-40-24

259-20-42 129-40-21

T@ 21 BS 20

178-10-42

356-21-00 178-10-30

T@ 22 BS 21

140-45-00

281-29-30 140-44-45

8.

2066.16 2006.0052

13.

89-17-18 611.470

1698.07 1698.069

90-03-24 517.577

14.

839.27 839.226

89-24-48 255.804

14.

1069.66 1069.340

16.

91-24-00 326.032

280.65 280.635

90-35-12 85.541

13.

164.09 163.7679

21.

93-35-26 50.016

144.98 144.875

93-35-56 44.191

21.

88-12-18 187.30 187.2098

88-13-18 57.085

23.

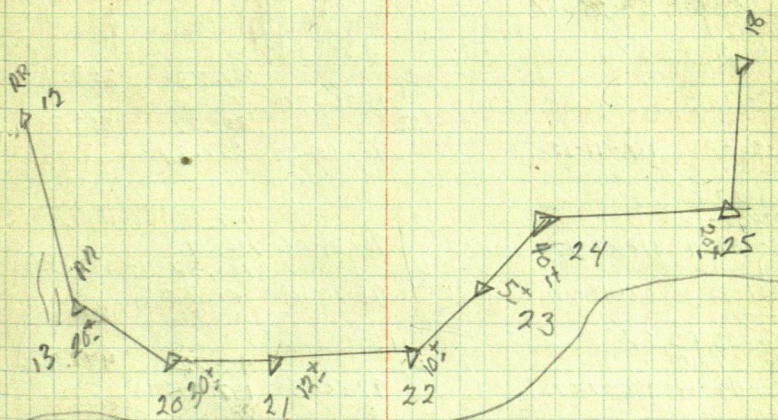
103.06 103.0533

89-20-42 31.414



Paul  
Ken

See page 38





## Blue Heron Lodge

Λ@ 23 BS 22  
 178-43-04  
 357-25-54 178-42-57

Λ@ 24 BS 25

136-29-00  
 272-57-24 136-28-40

Λ@ 25 BS 24

85-01-28  
 170-63-06 85-01-33

Λ@ 18 BS 25

179-48-18  
 359-36-08 179-48-04

Λ@ W 4 BS 26

159-28-12  
 318-56-28 159-28-09

Λ@ 26 BS 27

182-19-18

364-38-24 182-19-12

Λ@ 27 BS 28

177-08-18  
 354-16-34 177-08-17  
 08-18-42  
 16 16-37-20 08-18-40

Λ@ 28 BS 27

180-27-10  
 360-54-14 180-27-07

Λ@ 29 BS 12

141-18-04  
 282-35-54 141-17-57

Λ@ 12 BS 29

~~171-18-04~~  
~~282-35-54~~ 141-17-57  
 07-58-00  
 15-55-54 07-57-57

23

93.17

91.323

25

101-25-30 22.397

218.66

218.3456

93-04-22 66.649

25

121.63

113.535

8.

111-01-14 37.072

198.88

187.877

95-54-20 57.573

4

259.73

259.214

27.

93-36-36 79.166

852.39

852.389

90-05-22 259.811

28.

449.45

449.292

16.

91-31-06 136.992

197.37

197.3004

91-31-18 60.162

29

483.72

479.996

97-06-50 148.440

12.

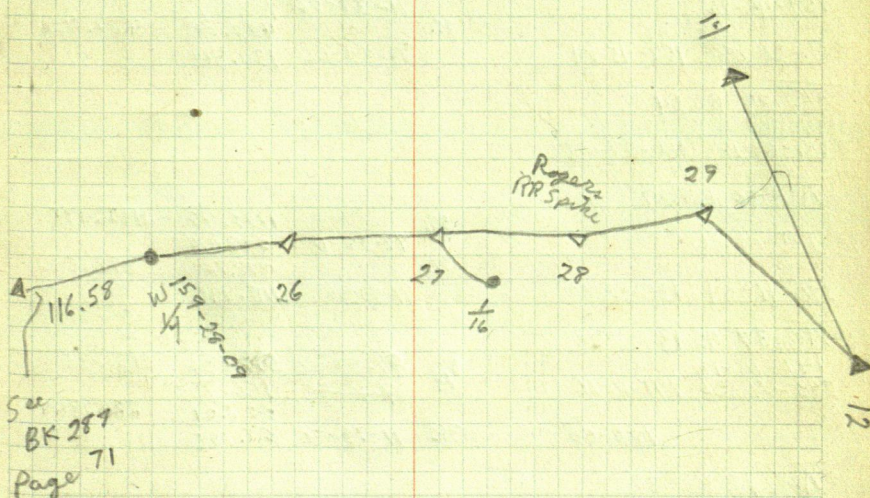
608.37

608.262

91-04-10 185.433



Paul  
Ken





$\pi @ 30 BS 31$

178-58-12

357-56-24 178-58-12

$\pi @ 31 BS 30$

175-58-14

351-56-20 175-58-10

$\pi @ 32 BS 33$

145-43-27

291-26-48 145-43-24

$\pi @ 33 BS 32$

156-13-18

312-26-24 156-13-12

$\pi @ 34 BS 33$

159-45-16

319-30-08 159-45-04

$\pi @ 35 BS 34$

140-59-12

281-58-18 140-59-09

$\pi @ 36 BS 37$

135-08-06

270-16-04 135-08-02

$\pi @ 37 BS 13$

141-10-18

282-20-33 141-10-16

180-00

$\pi @ 13 BS 37$

39-59-42

79-59-30 39-59-45

31

81-42-36

Sec

Con

90-42-12

127.63

38.902

231.00

70.409

126.296

230.982

32

85-12-24

31

87-29-50

347.54

105.934

234.24

71.397

346.324

284.236

33

91-32-26

35

91-32-06

351.71

107.201

427.88

130.419

351.5687

427.726

35

88-38-16

37

91-55-30

1112.49

338.094

378.76

115.446

1112.175

378.546

313

87-59-06

32

87-10-56

91-19-30

512.36

156.700

227.01

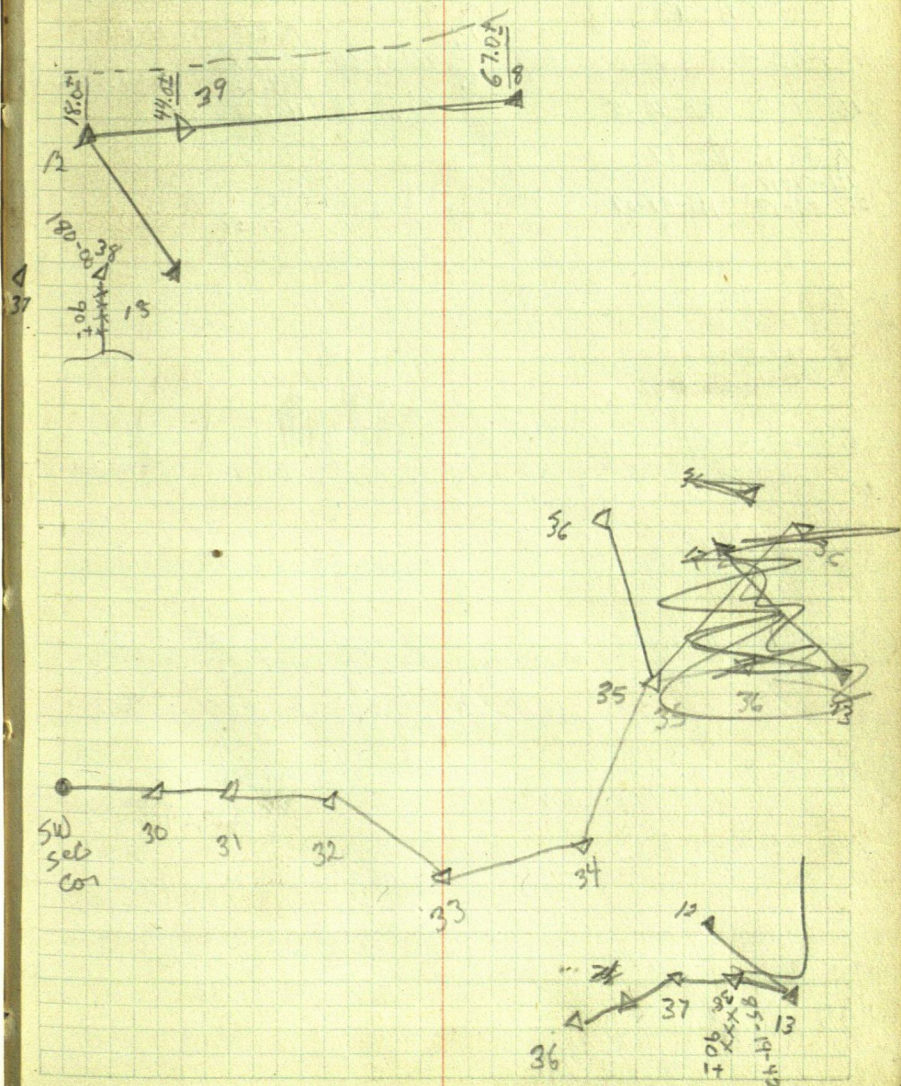
69.195

512.36

226.949



Blue Heron Lodge  
Wabedo Lake





$\pi @ 8 BS 12$

39 180-00-00

$\pi @ 39 BS 13$

83-40-30

167-36-30 83-40-15

$\pi @ 13 BS 37$

111-59-18

223-58-18 111-59-09

13.

8.

90-35-50

87-15-24

704.18

252.623

381.66

116.333

704.141

381.222



Tree for SW Sec Cor 22



7" Balsam S<sup>0</sup> 26.6

9" Balsam E 35.23

9" Balsam W 31.74

Tree for W 1/4 cor



6" Maple S S<sup>0</sup> E 7.43

14" Red Oak N 10<sup>0</sup> E 33.05

13" Red Oak N 50<sup>0</sup> E 48.4

6 1/4" Red Oak N 75<sup>0</sup> W 51.74



Dix

~~Dick~~

Te 3 BS 25

4. 89-23-24

178-46-36 89-23-18

Te 3 BS 1/4

2 180-02-12

366-04-18 180-02-09

Te 3 BS 4

6 180-00-

7. Te 6 BS 3

87-35-36

175-11-12 87-35-36

Te 7 BS 6

9 180-10-02

0-20-06 180-10-03

8 93-30-58 93-30-51

8 87-01-43

Te 9 BS 7

10 101-45-56

203-31-43 101-45-51

Te 10 BS 9

11 260-35-58

161-11-33 260-35-47

Te 11 BS 10

12 102-13-06

204-25-40 102-12-50

172-04-06

344-02-04 172-03-02

5. 90-07-54

4. 90-08-30

2. 90-12-30

6. 90-08-54

7. 90-03-24

9 90-06-19

8 90-02-57

10 90-22-48

9

11 89-37-42

12 89-53-10

2615.25

797.131

2651.13

808.063

1324.27

403.640

3617.36

1102.632

2594.12

790.685

2634.37

802.956

2

852.28

259.776

743.77

226.703

1273.39

388.129

2660.49

810.922

2615.243

2651.128

1324.261

3617.547

2594.118

2634.365

852.279

743.753

1273.367

2660.484







$\pi @ 12 BS 11$

13 88-18-12

176-36-20 88-18-10

$\pi @ 13 BS 12$

1289-52-42 1456.27 1456.266  
463.872

(15) 154-35-18

309-10-24 154-35-12

15.269-14-30 947.23 947.147  
288.712

$\pi @ 13 BS 15$

(14) 76-10-26

152-20-54 76-10-27

$\pi @ 15 BS 13$

5 195-18-56

36-37-20 195-18-46

$\pi @ 5 BS 15$

15.90-18-50 2226-14 2226.106  
678.527

180-06-06

3 0-12-03 180-06-1

$\pi @ 2 BS 1$

1. 91-01-0 1325.85  
404.122

3 180-04-45

0-09-12

180-04-36

$\pi @ 2A BS 2$

96-18-52

24-25-06 - 200'

44-43-54 - 117'

56-41-16 - 152'

$\pi @ 2B BS 2$

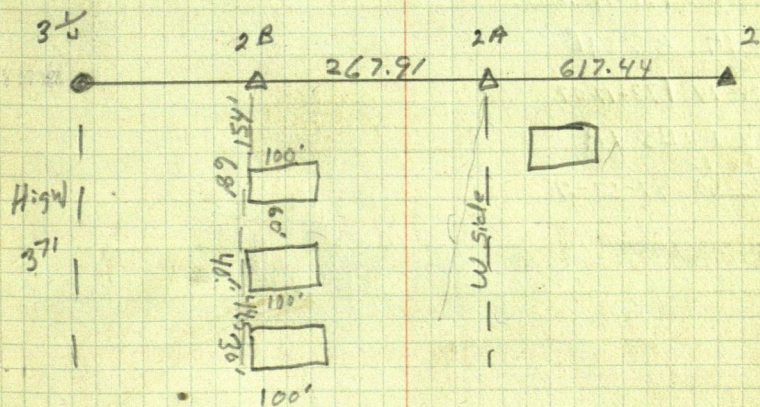
90-20-08

West ditch  
angle down new road  
NE cor Building  
NW cor  
SW cor

Angle along front of Buildings



E 2 Lumber





## EΣ Lumber

$\pi @$  1 D BS ~~10~~ MC  
 108-35-30  
 217-10-30 108-35-15

$\pi @$  1 C BS 1 D  
 151-16-44  
 362-33-04 151-16-32

$\pi @$  1 BS BS 1 C  
 198-14-16  
 36-28-36 198-14-18

$\pi @$  1A BS 1B  
 173-16-52  
 346-34-14 173-17-07

$\pi @$  1 BS 1A  
 97-58-18  
 195-56-42 97-58-21



2

A

97-59-21

232.83

173-17-17

A

1A

960.35

198-14-18

A

1B

568.11

151-16-32

A

1C

108-35-30

161.0

Q83-37-21

MC

233.55

A

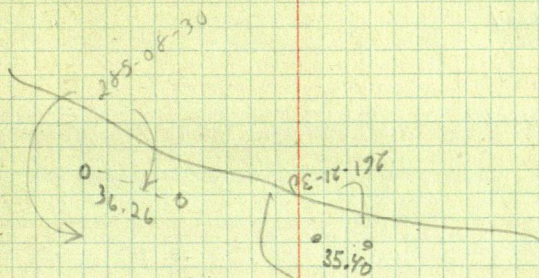
1D



83

Riddering & Jenks





0 35 0

0 35 0

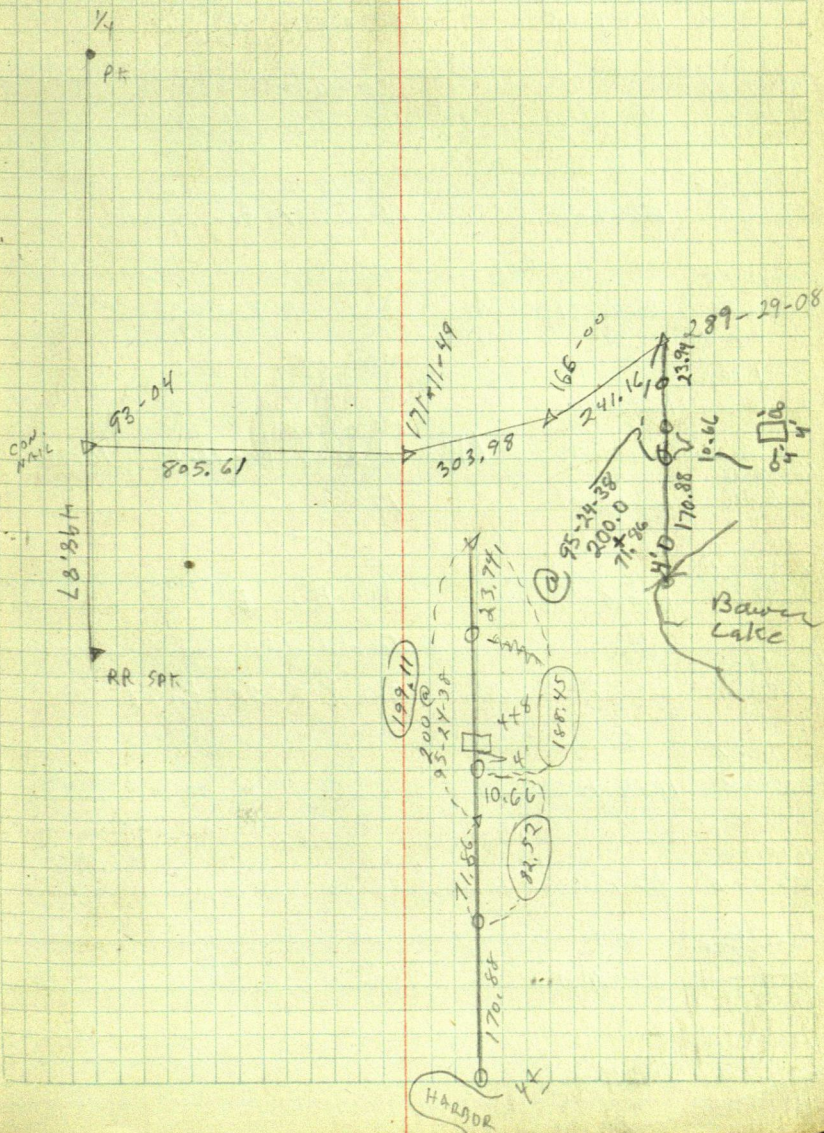
N  
A



DANIEL OIX

98-04-12  
186-08-00 93-04171-11-54  
342-23-38 171-11-49

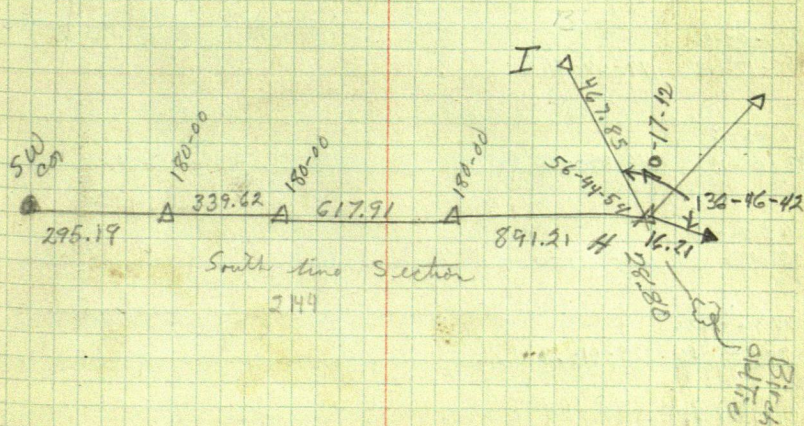
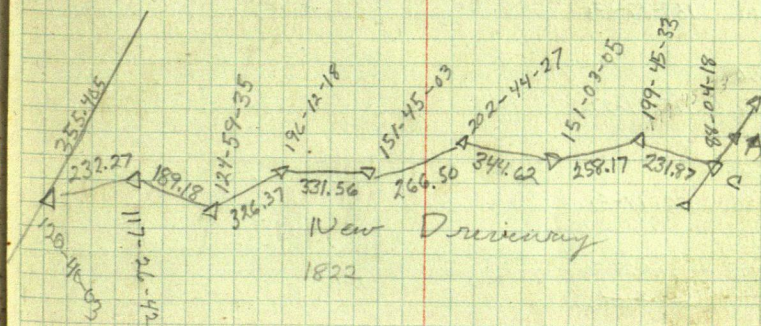
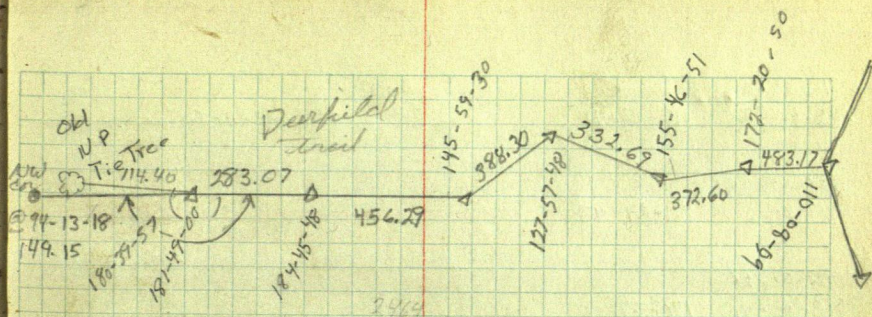














## Ren Crooker

115-22-42  
238-45-22 115-22-41

123-12-00  
246-23-48 123-11-54

221-24-56  
82-49-26 221-24-43

176-31-26  
353-62-40 176-31-26

159-29-46  
818-59-10 159-29-35

175-24-48  
850-48-54 175-24-27

176-18-04  
352-35-56 176-17-58

218-28-18 218-28-00  
~~76-55-54~~ ~~218-28-57~~  
76-56-00

66-45-46  
123-31-08 66-45-34

179-08-54  
358-17-48 179-08-54

86-35-12  
173-10-12 86-35-06

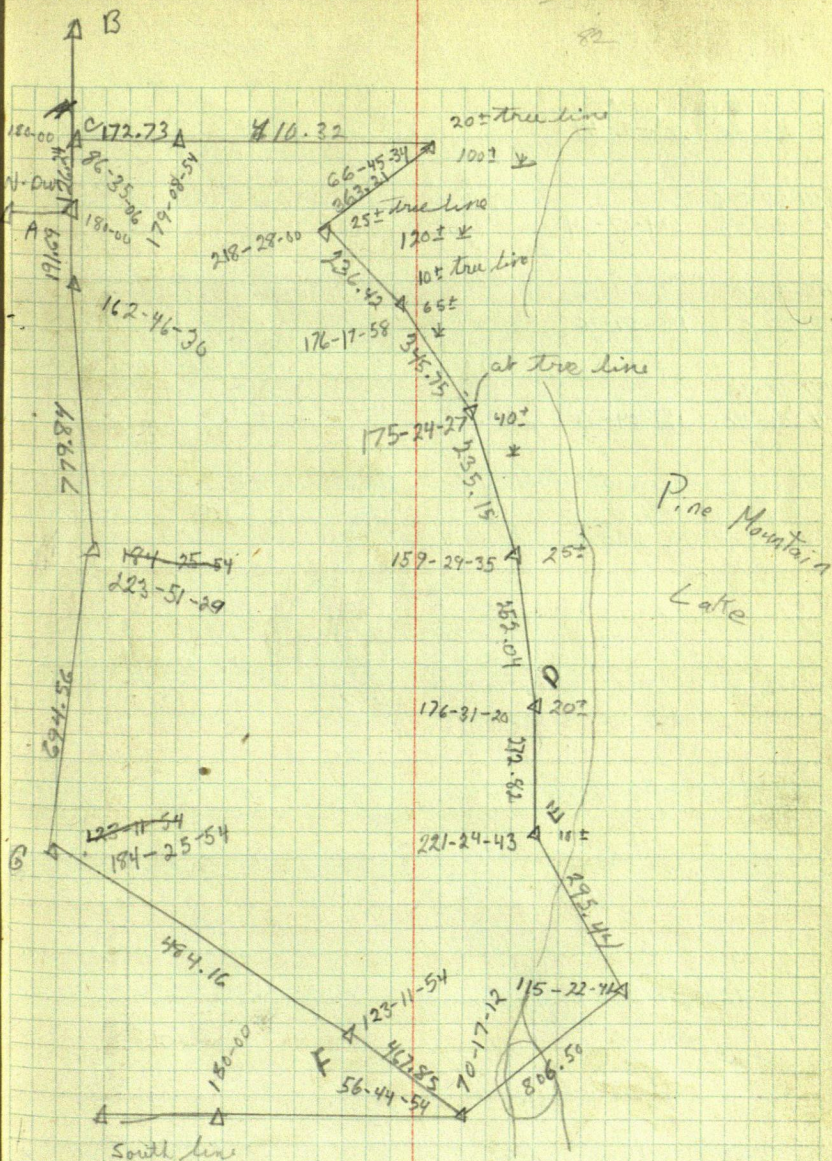
162-46-36  
335-83- 162-46-30

223-51-36  
87-42-58 223-51-29

184-26-04  
68-51-48 184-25-54



82





91

Renn Crocker

209-51-48

59-43-28

209-51-44

201-07-36

42-15-08

201-07-34

155-59-28

311-59-12

155-59-36

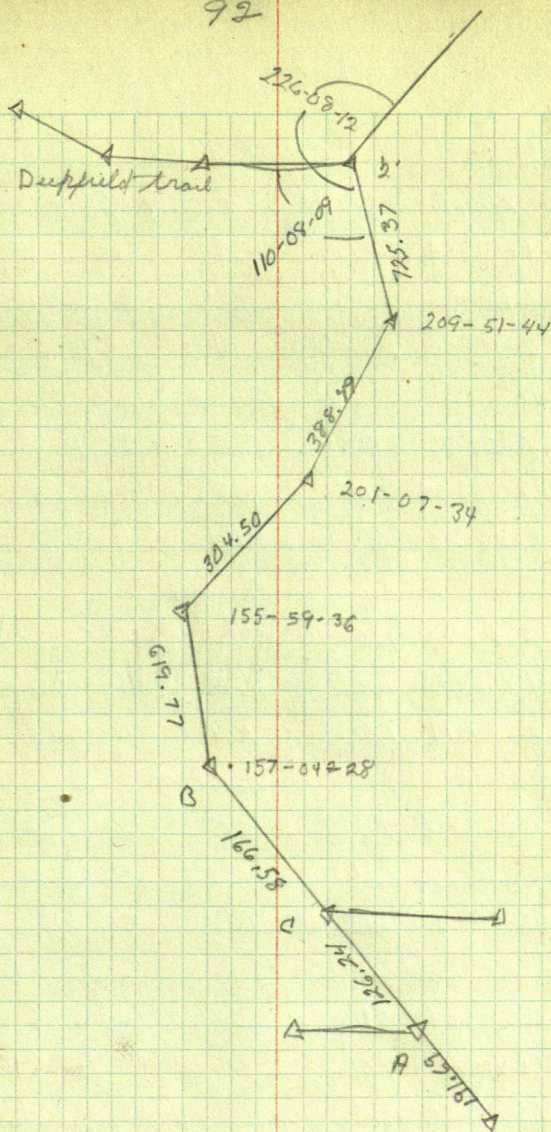
157-04-36

314-08-56

157-04-28



92





## Run Crocker

## TQ DBSE Building Locations

Base House	Angle	Dist	Cabin	Angle	Dist
SE cor	1-34-24	233'	SE	18-33-34	242'
NE cor	2-12-34	222'	NE	22-26-34	226'
NW cor	6-16-30	228'	NW	25-18-30	236'

## Foundations

SW	5-59-42	218'
NW	7-02-24	208'
NE	3-58-06	202'

## Garage 1

SE	26-43-42	338'
NE	29-28-54	316'
NW	31-56-48	326'

## Cabin 1

SE	724-04	126'
NE	10-14-20	106'
NW	22-57-14	122'

## Garage 2

SE	39-55-30	255'
NE	45-15-40	242'
NW	47-03-18	279'

## Cabin 2

SE	23-10-38	78'
NE	31-56-22	62'
NW	46-52-30	<del>116</del> 84'

## Cabin 3

SE	48-12-20	210'
NE	51-52-04	194'
NW	55-36-00	216'

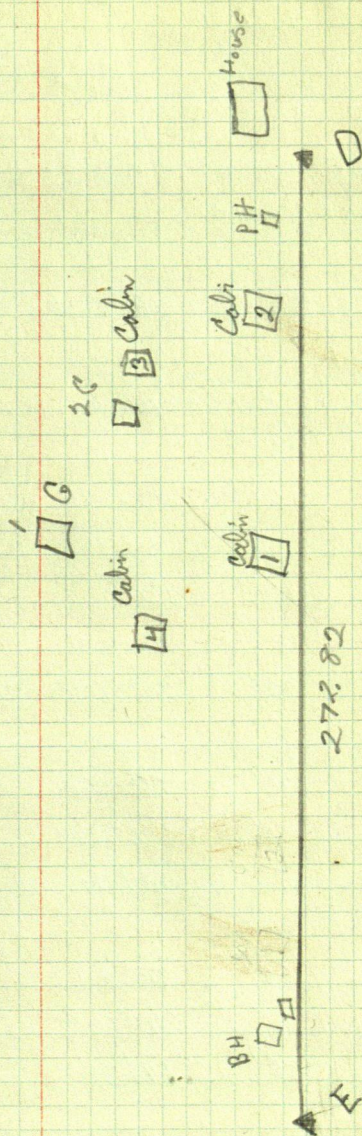
## Pump House

S	50-03-24	51'
E	51-28-08	46'
N	56-18-06	48'

## House

SW	94-17-14	77'
SE	102-10-12	50'
NE	136-26-54	82'







## Ran Crocker

31-31-12  
63-02-10 31-31-05

77-23-54  
154-47-10 77-23-35

201-35-12  
43-09-54 201-34-57

To J BS I Relocate buildings

Cabin 1 Ft Angle

NE 54' 124-52

NW 45' 139-19

SW 66' 147-49-30

Garage 2

SE 119' 191-13-18

NE 91' 195-00-30

NW 99' 206-26-20

Garage 3

SE 30' 255-04-08

SW 56' 255-04-08

NE 38' 294-21

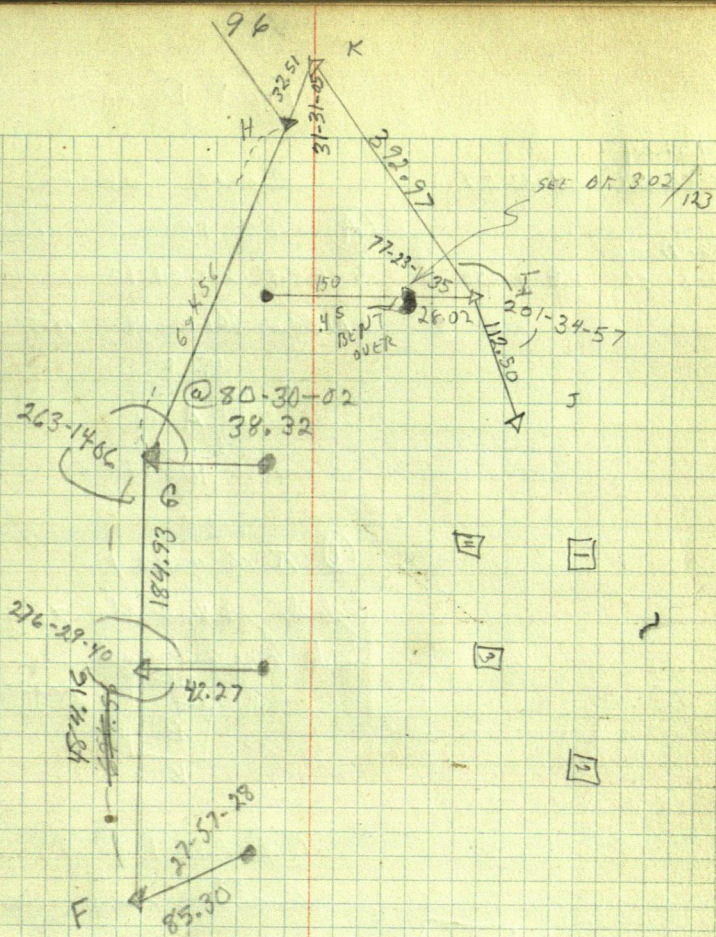
Cabin

SW 62' 320-00-1

SE 50' 346-20-30

NE 65' 349-09





75' south  
175' north



97

Fred Dehnel

84-34-04  
169-07-54 84-33-57

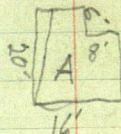
158-47-06  
317-37-56 158-48-58

Locate Cabin

(A) T @ 185 2 16x20

SE cor 215-34-10 28.4'

NE cor 261-10-24 19.2'



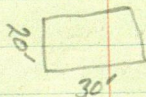
(B) T @ 3 BS 1

angle along west edge 79-53-22

with 16.55 east angle on east edge  
parallel

T @ 3 BS 4

Locate Shed

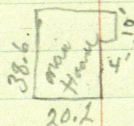


SW corner 43-23-24 175.0'

SE cor 49-07-36 149.0'

T @ 3 BS 4

3a To house  
36.94



angle west edge main House

Distance SW cor

103-17-36 41.75

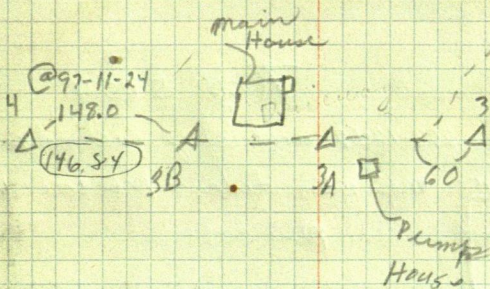
Locate pump house



NW cor 218-37 37'

SW cor 224-21 38.7'

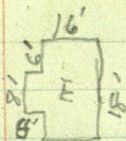






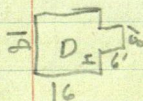
99

Fred Dehne

22-47-00  
45-34 22-47-00T @ 4 BS 3  
Locate cabin E

NE cor	28-59-24	64.5
NW cor	33-45-18	49.0
SW cor	51-01-46	57.60

Cabin D



NE cor	115-04-18	34.25
NW cor	137-38-12	41.1

Cabin C



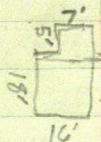
Dist SW cor	
West edge	279-36-36
SE cor	298-01-48

SW cor	
@ 74-53-00	50.70
(48.94)	

SE cor	
@ 74-53-00	53.50
(51.64)	

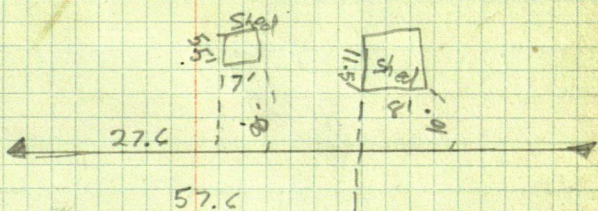
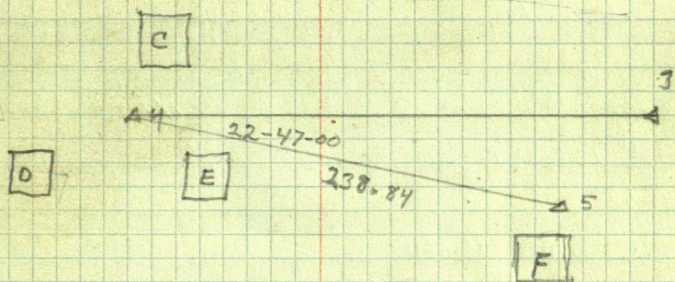
T @ 5 BS 4

263-42-52 angle along east edge  
main cabin distance NE cor 12.2  
NW cor





100





DANIEL DIX

A @ 13 BS 12

143-28-48

461 286.57-04 143-28-32

269.04-56 512.48 512.414

A @ 13 BS 12

154-35-06

⑤ 309-10.08 154-35-04

947.20

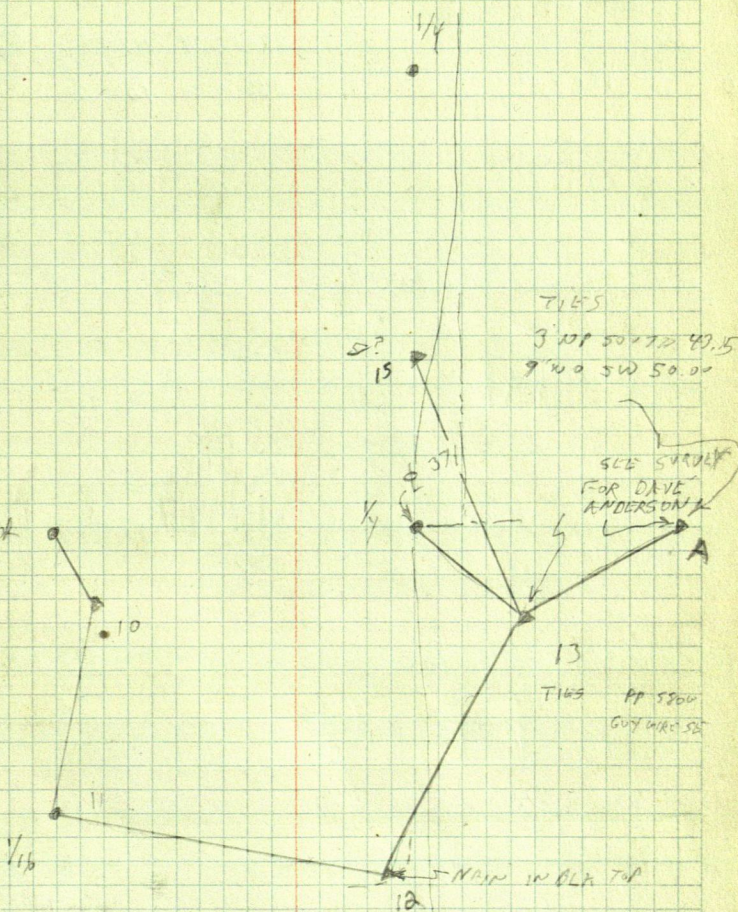
A @ 13 BS 12

230-45-40

A 461-31 230-45-36



SEC COA





Daniel Dix

T@ C BS A

D	180-00	89-52-24	967.53	967,527
		263-09-24	163,70	162,534



1/4

0

89-26-27

1335, 2Y

A 7 245.17 0  
11.84 0

C  
0

0  
0

264.35

13.51  
13.51  
13.51  
13.51

13.51

15, CENT 5th

PR 50 5

EDGE OF BCK TOP  
SHOULDER

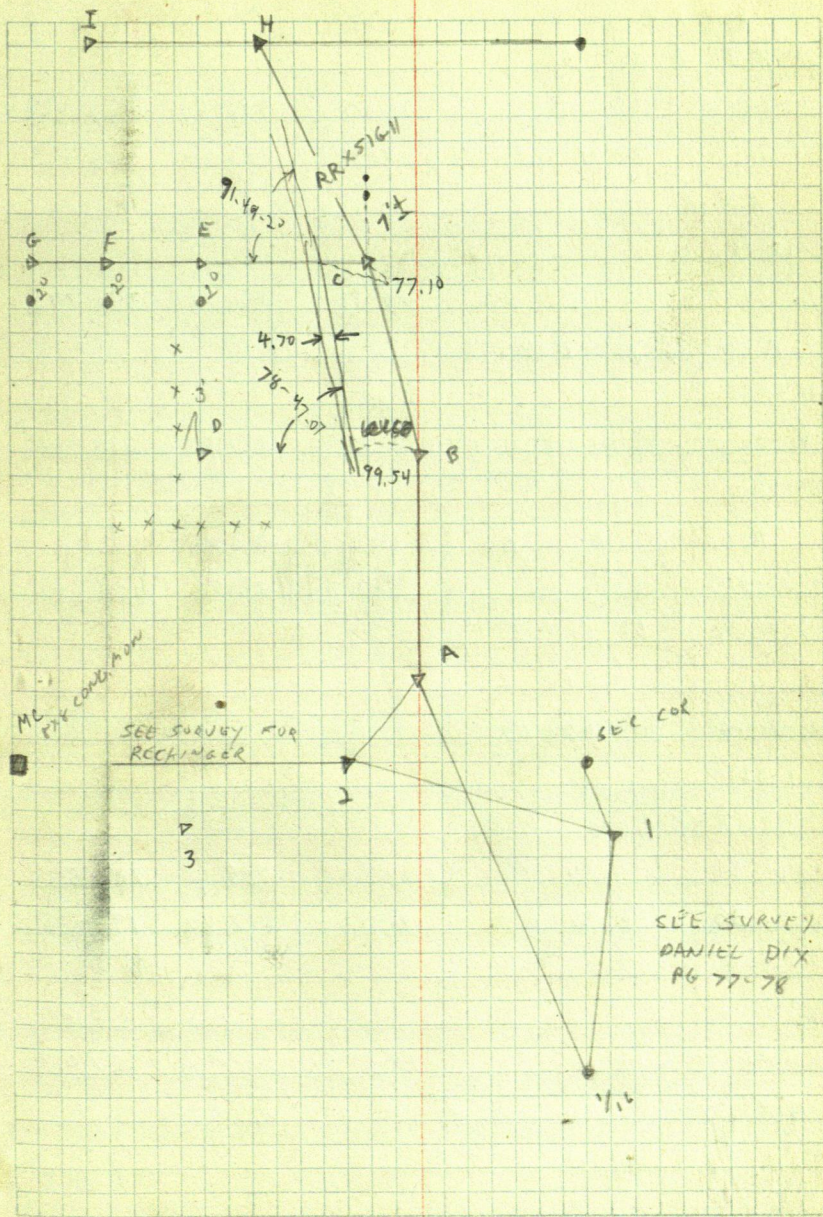


IVAN FISHER

K @ 1/6 BS A				
23-26-45				
①	46-53-12	23-26-36		
K @ A BS 1/6				
	201-0-48		89-50-30	1862.00 1861.993
B	42-1-18	201-0-39	89-54-40	2287.94 2287.937
	22-09-27		89-51	313.39 313.389
2	44-19-06	22-09-33		
K @ B BS A				
	179-56-18			
C	359-52-30	179-56-15	90-04	1837.66 1837.659
	101-08-18		<del>80-13</del>	
D	202-16-30	101-08-15	90-13	882.52 882.514
K @ C BS B				
	90-38-54			
E	181-17-30	90-38-45		
K @ C BS E				
	78-17-24			
H	156-34-30	78-17-15		
K @ H BS SEC COR				
	75-28-20		89-50-18	1123.92 1123.916
C	150-56-24	75-28-12	89-39-54	832.85 832.836
K @ H BS C				
	104-42-30			
I	209-24-33	104-42-17	91-25-20	542.26 542.093
	78-47-06			
	157-33-15	78-47-07		



W. CURR  
DAVE FYE





	$\pi @$	E	BS	G				
	177-14-15				90-09	442.29	442.289	
C	354-28	177-14			89-53	455.47	455.469	

	$\pi @$	E	BS	G				
E1	267-48							
F					89-36	342.78	342.772	

	$\pi @$	G	BS	E				
	90-01-24							
J	180-03-18	90-01-39			90-25	219.92	219.914	
G1	89-47-42							

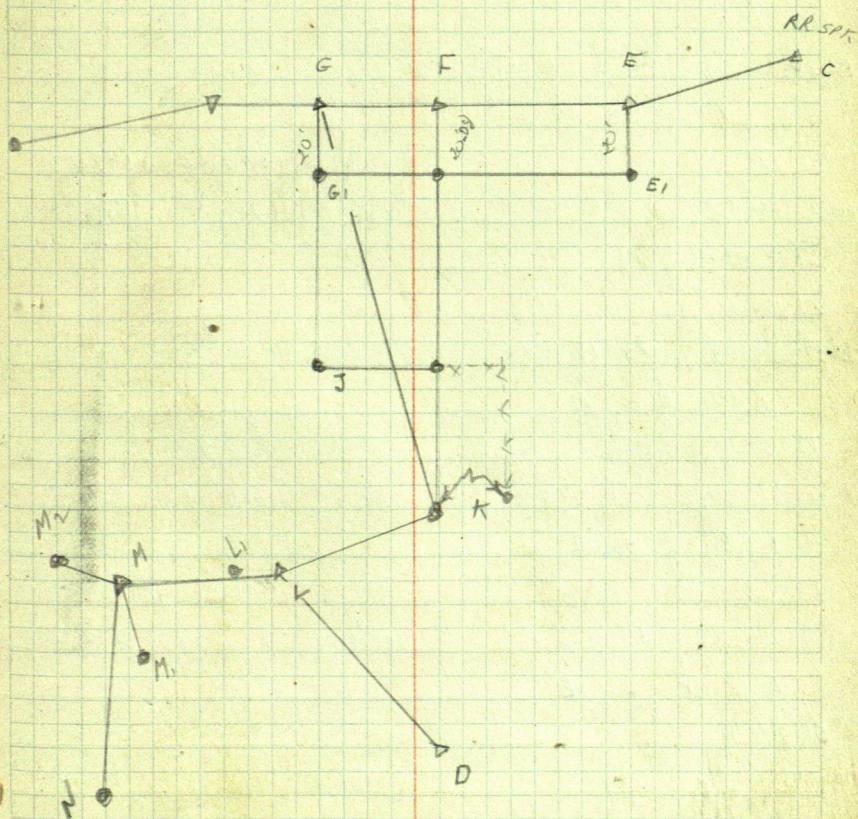
	$\pi @$	G	BS	E				
	63-20-45					<del>285.72</del>		
K	126-41-30	63-20-45			90-00	285.72		

	$\pi @$	K	BS	L				
	111-48-15							
	<del>223-36-18</del>	111-48-09						
G	223-36-18							

	$\pi @$	L	BS	K				
	106-31-36				90-11-48	789.60	789.593	
D	213-02-36	106-31-48			90-17	997.42	997.408	

	$\pi @$	L	BS	K				
	233-18-21							
M	106-36-42	233-18-21			90-51-50	207.04	207.017	
L1	235-37-18					28.83		







$\pi @ M BS L$

92-29-06

N 184-52-42 92-28-51 90-37-40 290.25 294.233

86-03-48  
M<sub>1</sub> 172-07-36 86-03-48 38.30  
199-38-30  
M<sub>2</sub> 39-14 199-37 29.12

$\pi @ 2 BS 3$

103-01-27

A 206-02-54 103-01-27

$\pi @ 3 BS 2$

206-43-06 89-28-36 697.66 697.631  
Mc 53-55-57 206-42-58 91-12-18 356.04 355.961

$\pi @ M BS 0$

73-15-06

L 146-30-09 73-15-04

$\pi @ 0 BS M$

13-15

90 357.90

P 26-29-54 13-14-57 90 219.96

$\pi @ 0 BS M$

199-13-18

Q 38-26-06 199-13-03 90-15-30 232.27 232.208

$\pi @ K BS L$

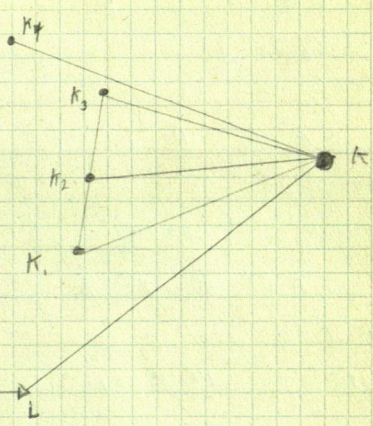
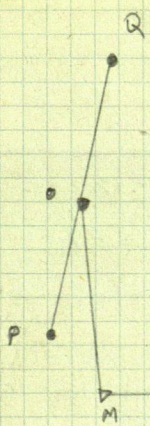
56-48-45

K<sub>3</sub> 113-37-30 56-48-45 89-31-18 198.56 198.553

66-03-24

K<sub>4</sub> 132-06-42 66-03-21 90-01 312.83





A

U

3  
18'16"  
5'10"  
5'5"  
5'20"



$\Lambda @ K BS L$

23-54-30

K, 47-49-06

23-54-33

90-18

369.76

369.755

$\Lambda @ R BS K$

204.42-18

89-39-20

1701.66

1701.629

S 49-24-12

204.42-06

99-14-18

77.80

78.765

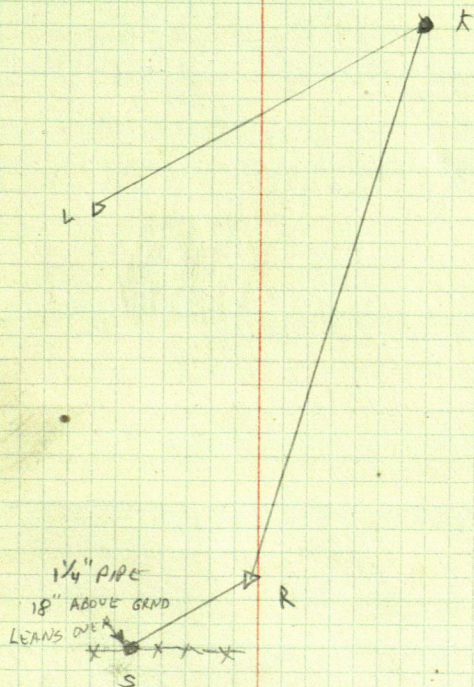
$\Lambda @ K AS R$

14-34-03

L 29-08-03

14-34-01







IVAN FISHER







NORM GKEOANG

T@ B BS A

149.24

~~84-24-24~~

C 298.47-54

149.23-57

74.24-24

140.60

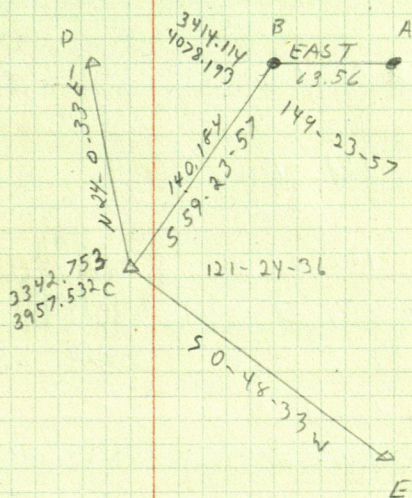
140.184

T@ C AS B

E 121.24-36

D 324.36-36







MAN FISHER

$\pi @$  1 BS E-

128-45

Q 257-29-56 128-44-58 99-06-36 410.77 410.769

174-38-50

Q 349-17-15 174-38-38 90-52 213.88 213.856

$\pi @$

Q BS 1

1-20-55

3 2-41-30 1-20-45

182-03

0 4-06-15 182-03-08

$\pi @$

M BS 3

108-37-30

92-12-30 540.40 539.999

0 217-06-28 108-38-14

$\pi @$

3 BS M

274-14-12

4 188-28-24 274-14-12

$\pi @$

3 BS M

118-31-40

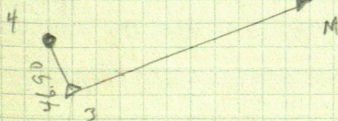
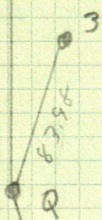
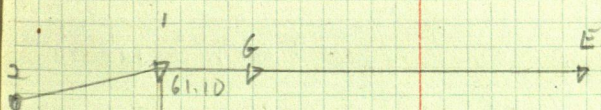
88-01-48 440.11 439.85

5 237-03 118-31-30

90-27-42 258.42 258.412

X







LOT 15 KINNEY CAMP

T @ 1 BS 3

243-27

2 126-53-40 243-26-50

T @ 3 BS 1

53-58-12

90-40-0

148.93

148.92

4 107-57 53-58-30

T @ 3 BS 5

106-52-12

90-13-06

553.70

553.696

1 213-44-15 106-52-08

T @ 5 BS 6

20-48-30

7 41-37-30 80-48-45

158-47-36

3 317-34-48 158-47-24

T @ 6 BS 8

179-19-40

88-54-30 300.01

299.956

5 358-38-55 179-19-27

90-13-12 286.59

286.588

T @ 8 BS 6

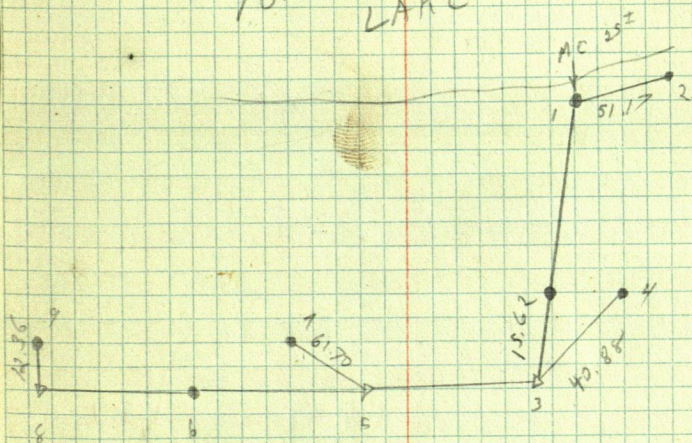
266-39-35

9 173-19  
537

266-39-30



PONTO LAKE





IVAN FISHER

2

4

1

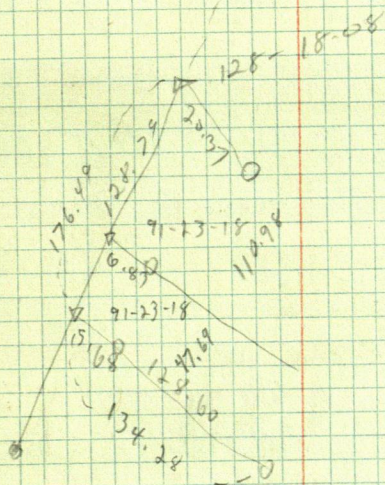
7

3

5

9





$$\begin{array}{r}
 47.64 \\
 111 \\
 \hline
 158.67
 \end{array}$$



ROY KENNY

π @ A BS B

89-26-30

90-25-06 1023.78 1023.746

c 178-62-48 89-26-24

91-52-18 494.05 493.786

π @ D BS B

89-26-30

91-21-48 540.35 540.201

4 E

1

3

E

SEC. COL  
B

3/4" PIPE  
300

300  
1/2" PIPE  
2" PIPE

0

3/4" PIPE  
C

4x4x4  
C 4x4x4



ARDON FISHER

SE 1/4 SEC 32- 139-30

90-29-24 1339.28  
406.214 1539.23  
0.66

π e \* BS D

269-22-48 1491.05  
454.425 1490.961

269-05-12 1329.46  
405.218 1329.283

269-06-48 1091.61  
332.701 1091.439

268-57 797.85  
247.189 797.72

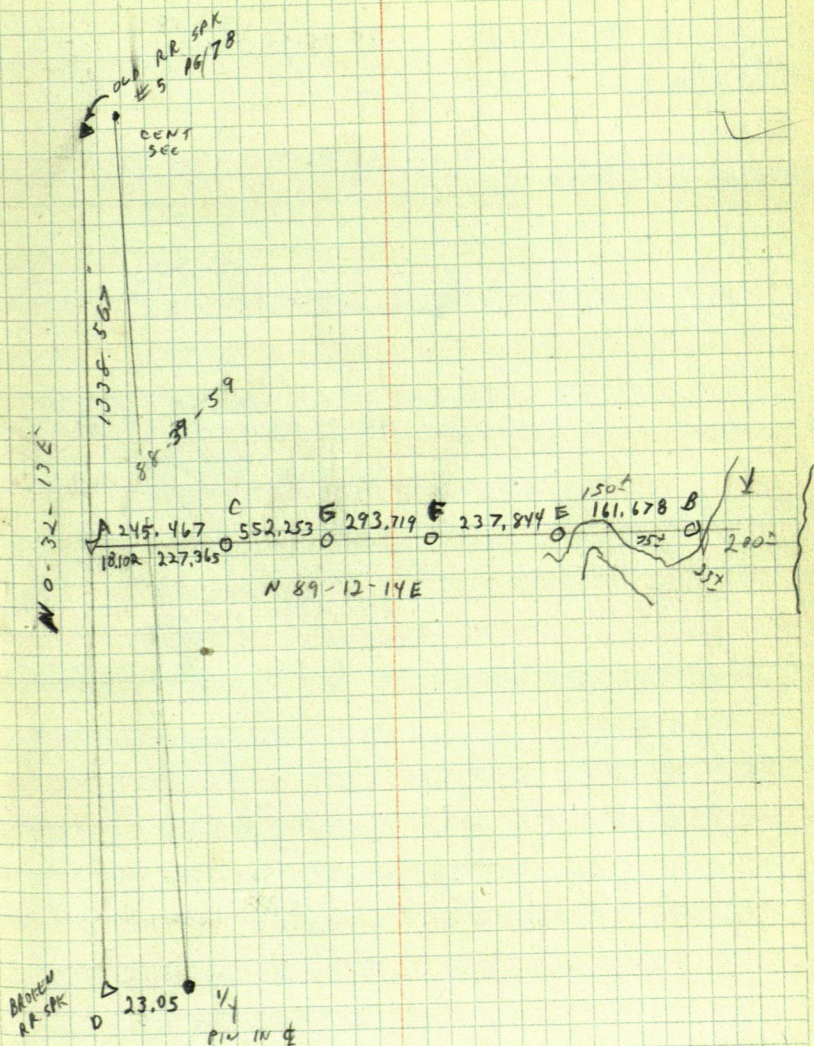
267-26-40 245.71  
74.894 245.467



15° CLOD

E. CURE  
S. MICK

2-28-86





Don Olson

70 2BS1

183-28-12

71 06-56-18 183-27-09

72 3BS4

93-0036

2 176-01-12 93-00-36

5

71 5PS3

6

7

70 7PS6

3 8

208.17

94-27-18 63.442

95-35-54 122.88

37.456

150.70

181.70

94-20-42 55.381

266-33-46 446.84

136.155

181.175

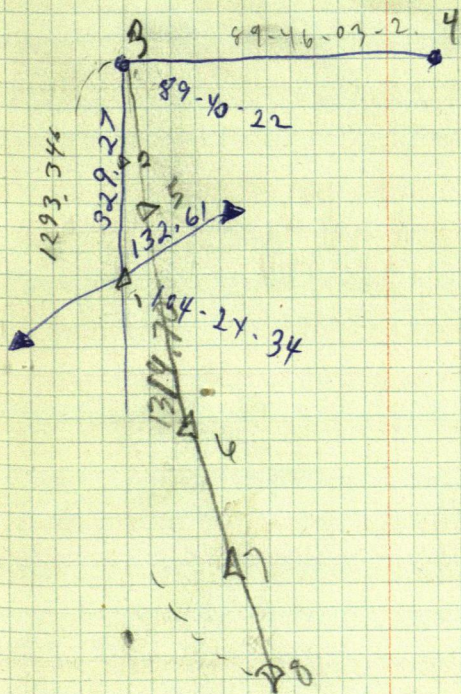
445.875

516.39

88-49-34 157.394

516.276





31433