

NINTH  
STANDARD  
PARALLEL

145



IVY LEAF



No. 1203



# INDEX

Board. Jan. Pg 6 Feb Pg 6 Feb 52  
Olson. Jan. Pg 6 Feb Pg 6

Jan. Pg 10  
Solberg Feb. 10

Jan Pg 12  
Evenson Feb. 12-97

Erickson Feb Pg 30

Joseph Feb Pg 33

Time

Jan 1921

Pg 8

Feb "

" 8 also Pg 46-53

Mar "

" 55 April 58

May 76

Road survey for Page 60-61-62-93-

plots.

56- 64- 68- 70-72-73-

Time 8- 46-53-55-58-76-97

Board 6- 10-12-30-33-52-77-97

conclusions:-



Working for Sibley Trwp  
 Work to be paid for by  
 4 Townships

Sibley 136-29

Pelican 136-28

Jenkins 137-29

Ideal 137-28

Road begun at  
 NW Cor Sec 2. 136-29

Run to Lake

3 1/2 miles to SW Cor 33-137-28  
 North Standard Parallel

@ 15<sup>00</sup> a day and expenses  
 for engineer work and use of  
 units &c.



Jan 28-1921 Friday

Copy field notes.

J W Curo and Harold J Curo  
only charge for one:  $\frac{1}{2}$  day

Saturday Jan 29-1921

Copy more notes and  
Lv Brainerd in Curo's Car

Arrive at O.M.Olsen

Lake View Farm at noon <sup>Sec 26</sup> 136-29

Harold comes along  
all like dinner with Olson

PM

Curo and Curo look for  
Corns along road line

Over mile with S. Bremer, Pelican <sup>\$3.</sup>

John W Curo

$\frac{1}{2}$  day To, Bibby One man



4  
Sunday Jan 30 - 1921

We work partly for no one  
and get back to Olsen farm  
for over night.

John McCuro makes no charge  
for his time only his board  
or a couple of meals or.

Car extra \$5.



Jan 31-1921- Monday

J. W. Curo and Car - Take crew to work  
Take Gerald and Harold Curo - O.M.  
also. Pick up H. Johnson Clk. go to  
Pequot Pick up Theodore Erickson drive  
to Slocum Corner - Ole Holium comes  
to help.

S.P. Salberg tries to show us his  
corner and helps 2 hours in a.m.

We look for SE cor 137-29 gone  
Find BTS North cor sees 1 and 2.

136-29 - Pass West to  $\frac{1}{4}$  in 20  
side see 36-137-29 where US notes say  
Pm.  $6N5^{\circ}W$  20 = 13.20 Feet OK  
"  $20N25^{\circ}E$  71 = 46.86 " gone

We find stump of NW BT.  
plainly marked from which we set  
spike for line  $\frac{1}{4}$  @  $9^{\circ}10'$   
old stump about 20" not marked bears  
about  $N35^{\circ}E$  46.2 ft. Ignore this

Theodore Erickson takes dinner with  
vils Evenson

All the rest take dinner  
with S.P. Salberg  
P.M.

Curo and Salberg go to US-M.C.  
on South side of Hay Lake but sees  
35-36 T137R29 where US notes say

at 1544 LKS (= 1019.04 FT) North set  
M.C. BP85  $29^{\circ}30'W$  52 LKS (= 34.32 FT)  
BP85  $36^{\circ}30'E$  21 " = (13.86 FT)

Continued on Page 14.



## Board sheet

Jan 1921 ~ February 1921

SUN			1	2	3	4	5	6	7	8	9
29	30	31									

Boarding With Mrs O.M. Olsen

D		B									
	SL SL						S				
D		B	B	B	B		DB	B			
	SL SL		SL SL			SL SL				L	
		B	B								
D	SL SL						S				

↑  
↑

8 meals  
@ 35¢4 meals  
@ 25¢

↑  
=

12 meals  
5 Beds

all paid by  
Sibley  
May 18-1921  
C.W.



John W. Curo

Harald J. Curo

~~Harald~~

Theo. Erickson



See page 46-96-

Time	Sheet	Sibley Trp					Sum
		Jan 1921	Feb 1921	3	4	5	
John W. Curo		28	29	30	31		7
Expense		-	-	0	31		
Car		-	-	0	3750		
Harold Curo		2	?	1	1		1
Oscar M. Olsen ch		2	-	0	1		1
H. J. Johnson, Chk		-	-	0	1		-
Garold Curo		-	-	0	-		-
Ole Holm		-	-	0	1		1
Theodore Erickson		-	-	0	1		1
S. R. Salberg		-	-	0	1/2		-
H. J. Johnson's Team		-	-	0	-		-
O. M. O. Jensen's Team		-	-	0	-		-
Alfred Olsen		-	-	-	-		-

all  
By  
Sibley  
Trp  
1921



Jan 31-1925

Pibley Trwp 136-29

O M Olsen Ch Sec 26

Claus A Reiter Sec 27

Theodore Erickson Sec 13

H J Johnson Clk Sec 27.

Grover Dickson Treas Sec 11

Farmers State Bank Pegoot



10

## Board Sheet

1921  
Jan

Feb 1921

29	SUN 30	31	1	2	3	4	5	6

Boarding With Solberg S.P.

- 0<sup>D</sup>- 0<sup>D</sup>- 0<sup>D</sup>- 0<sup>D</sup>- 0<sup>D</sup>- 0<sup>D</sup>- 0<sup>-</sup>

all paid by  
Toby  
Solberg May 18 1921  
C. W. M.

Total 11 minutes

@ 35¢

see also

Page 77.



11  
John W Curo  
Harold "

Harold "

O. M. Olson

H. J. Johnson

Ole Hoium

Theo Erickson



12

## Board Sheet

Jan 1921

Feb 1921

	Sun	
29	30	31

1	2	3
---	---	---

## Board With Nels Evenson

out  $\rightarrow$  D

- 0

D

D

- 0

D

D

- 0

D

D

- 0

D

D

D

D

10 meals

@ 35¢

all paid by  
 7 up May 18 1921  
 J. E. Evenson



Fred Erickson

H. J. Curo

O. M. Olsen

O/e Holm

H. J. Johnson

Alfred Cline



Notes Brot From Page 5

Jan 31-1921 Monday

US Van 10°20' E

We find the SW tree standing green  
plainly marked from which we  
set a 2x20" stake in snow or sand  
beach for line M.C. @ 8°20' or  
with one

New BT Uij: JP8S 53°30' E 54.30 FT  
8°20' Uij

The old SE US Tree is here but  
cannot be use as it is up rooted  
Start a picket line South  
with compass @ 8°20' Uij  
salberg cuts it out

Curs goes back and meets  
Harold and his crew who are  
cutting line two ways E & W  
from 1/4 on so side see 36. 137-29  
Curs & Curs with alson and  
Johnson drive 1 1/2 miles west and  
locate SW Cor see 35 = SE Cor see  
34. T 137-29 by walking 3/4 miles  
still further west where we place  
tall flag at the iron and cement  
monuments set every 80 rods along  
north side see 4 T 136-R 29 which  
Curs once surveyed extremely  
accurate and used the SE Cor see  
34 T 137-29 as a base in this survey

From the north forty corner of  
see 4 136-29 we extend our  
line East to an intersection



Jan 31-1921

with the  $\frac{1}{2}$  of state road running  
 north at which point we drive a  
 $3 \times 10$ " Tm in the center of  
 graded road running N-E & W.  
 Halberg helps cut big  
 trees out of road just south of his  
 house in SW SW sec 35

Curo and sons take Olson  
 home and stay over night with him  
 as Harold and I both work  
 together I only charge half rate  
 for my time.

Harold @ \$5.00

J W C

7.50

Harold nothing.

Over night with Olson

John W Curo



136-137-28-29

Feb 1-1921 Tuesday

W $\frac{1}{16}$	Sec cor	E $\frac{1}{16}$
1320 W spike	2640 W spike	3960 W spike
$\frac{1}{4}$	W $\frac{1}{16}$	Sec cor Fly
5280 W spike	6600 W spike	7920 W I.M.

Curo brings us to work in the  
cor Johnson comes with  
his team.

We now down the SE BT  
@ CC. 1-2 & 3-136-29

as it is dead and leaning  
to slump 5' hi.

Go west to Cor 34-35

Put in new BTS 8'

lained for line to 1' W  
line

NP 12 N 10° 52' E 207.60

Cor Fena post N 36° 44' W 42.75

JP 6 S 41° W 64.55

JP 5 S 56° 32' E 63.60

Harold & Curo



136-137-28-29

17

Feb. 1-1921

@ the corner to sec. 34-35-137-29

Curo leaves us and him and  
Harold drive to Jenkins in  
his car. I take crew and we  
drive to the  $\frac{1}{4}$  cor. on the south  
side of sec. 36-137-29

as the  $\frac{1}{4}$  corner is in a holler  
I carry transit west about  
150 ft. and work it on line  
between the  $\frac{1}{4}$  corner on the  
south side of sec. 36 and the  
sec. corner between secs 34-35  
137-29. and as the line that  
was cut out yesterday run a little  
too far north near the top of the  
hill east of the  $\frac{1}{4}$  corner I have  
Ole. Holm and Theo. Erickson  
Harold J. Curo



136-137-28-29

Feb-1-1921

widen it out a little on the south and I put a spike on the top of the hill so as to save setting up at the foot of the hill when we run east I leave Howm and Erickson to cut the line east as far as they could and keep on line and I take Olsen and Johnsons and we run a line.

West on south side of sec 36-137-29 beginning at the  $\frac{1}{4}$  cor. we chain west @ 100<sup>w</sup>-200<sup>w</sup> stake not on line @ 300<sup>w</sup> spike on line and a stake @ 400<sup>w</sup>-500<sup>w</sup> stakes not on line

Harold J. Curo



136-137-28-29

19

Feb. 1-1921

@ 600 W spike on line and a stake

@ 700 W-800 W stakes not on line

@ 900 W spike on line and a stake

I carry my transit a head

and set it over spike at 900 W

John W. Cure and Harold come  
back and give us some candy

but do not stay @ 1000-1100 W

stakes not on line @ 1200 W spike

on line and a stake @ 1300 stake

not on line @ 1320 a piece of

red cloth with a spike on line

west?

for East  $\frac{1}{4}$  cor south side sec. 36

@ 1400 W stake not on line

@ 1500 W spike on line and a stake

@ 1600 W-1700 W stakes not on

line @ 1800 W spike on line and

Harold J. Cure



136-137-28-29

Feb 1 - 1921

a stake @ 1900 W - 2000 W stakes  
 not on line @ 2100 W spike on  
 line and a stake @ 2200 W -  
 2300 W stakes not on line @  
 2400 W spike on line and stake  
 @ 2500 W - 2600 W stakes not on line  
 @ 2640 W red cloth on a spike in  
 line for sec corner. corner to  
 sec 35-36-137-29.

Where U S Notes call for.

Pine 10 N 37° W 49 LKS = 32.34 ft

" 12 N 68° E 82 LKS = 54.12 ft

We see a stump that could of  
 been the N.E tree but as I  
 have order to run another  
 mile west I do not look at  
 the stump very close

Harold J. Curo



Feb 1-1921

we all take dinner with Mrs.  
Solberg.

P.M.

As Horison and Erickson have  
cut the line east as far as they  
can with out line stake them  
along with me and have them  
make stakes for chaining

@ 2700 W spike on line and a stake

@ 2800 W - 2900 W stakes not on line

@ 3000 W spike on line and a stake

@ 3100 W - 3200 W stakes not on line @

3300 W spike on line and a stake @

3400 W - 3500 W stakes not on line @ 3600 W

spike on line and a stake @ 3700 W -

3800 W stakes not on line @ 3900 W

spike on line and a stake @ 3960 W

Harold J. Curro



Feb. 1-1921

a spike drove through a piece of  
red cloth spike on line and stake  
for east  $\frac{1}{4}$  cor on south side of  
sec. 35-137-29 @ 4000 W - 4100 W  
stake not on line @ 4200 W spike  
on line and a stake more transit  
a head @ 4300 W - 4400 W stakes not  
on line @ 4500 W spike on line and  
a stake @ 4600 W - 4700 W stakes not  
on line @ 4800 W spike on line and  
a stake @ 4900 W - 5000 W stake not  
on line @ 5100 W spike on line and  
a stake @ 5200 W stake not on line  
@ 5280 W a spike drove through  
a piece of red cloth set on line  
for Temp  $\frac{1}{4}$  cor on south side  
of sec. 35 where U.S. notes  
Harold J. Cuss



Feb. 1-1921

call for. yellow Pine 15°N 19°E 94 lks =

. 62.04 feet. " Pine 24°N 27°W 106 lks = 69.98

we do not look for these as it  
is getting late and we want  
to get the distance to the sec. cor.

corner to Secs. 34 &amp; 35-137-29

. @ 5300 W stake not on line @ 5400

W spike on line and a stake @ 5500 W

5600 W stakes not on line @ 5700 W

spike on line and a stake @ 5800 W

5900 W stakes not on line @ 6000 W

spike on line and a stake @ 6100 W

6200 W stakes not on line @ 6300 W

spike on line and a stake @ 6400 W

6500 W stakes not on line @ 6600

W spike drove through a piece of  
red cloth. spike on line for temp

Harold J. Curro



Feb. 1-1921

W  $\frac{1}{2}$  cor south side sec. 35-137-29as it is too dark to see we just  
chain west and set stakes

@ 6700 W - 6800 W - 6900 W - 7000 W - 7100 W

7200 W - 7300 W - 7400 W - 7500 W - 7600 W

7700 W - 7800 W - 7900 W set stakes

@ 7946 W  $\frac{3}{4} \times 10$ " I. M. quite

for right side with Johnson

as far as his place and Olsen

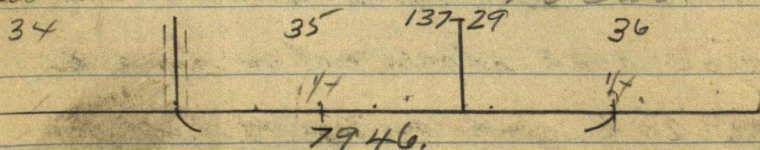
and I take a short cut through

the woods to his place. supper

and over night with Olsen

arrive at Olsen's farm at 7 o'clock

work on notes until 9 o'clock



Harold J. Curo



Feb. 2-1921

(The Sun Shines)

Olsen takes his team and we pick up Johnson and then drive to the  $\frac{1}{4}$  Cor. on south side of Sec. 36. where we meet the rest of the crew. Same crew. we start East on south side Sec. 36-137-29. We do not take time to put in view B.T.s at the  $\frac{1}{4}$  Cor. now as none of the crew would be able to work. I carry transit to top of hill where I had Hornum put a spike on line yesterday @ 100 E 200 E stakes not on line @ 300 E spike on line and stake @ 400 E-500 E stakes not on line @ 525.20 E spike on top of hill for Hub. @ 600 E-700-800 stakes not

Harold J. Curo



Feb. 2-1921 (The sun shines)

on line @ about 890 E fence two  
wires bcs. SE & NW @ 900 E spike on  
line and a stake @ 915 about center  
of road bcs. NW & SE @ 1000 E stake  
not on line @ 1045.50 E N & S wire fence  
not for from C.C. to sec 1-2-136-29

@ 1100 E stake not on line @ 1200 E  
spike on line and a stake @ 1300 E  
stake not on line @ 1320 E set spike  
drove through a piece of red cloth  
for temp E N<sub>6</sub> south side of sec.  
36-137-29 @ 1373.20 E spike for  
Hub. @ 1400 E 1500 E 1600 E 1700 E

stakes not on line @ 1800 E spike  
on line and a stake @ 1900 E-2000 E  
stakes not on line @ 2100 E spike  
on line and a stake @ 2200 E 2300 E

Harold J. Curo



Feb. 2-1921 (the sun shines)

stakes not on line @ 235280E price

two wires br. N+S @ 2400E spike on line

and a stake @ 2500E 2600E stakes not

on line @ 2640E spike drove through

a piece of red cloth for temp. SE

Cor to Rec 36-137-29. <sup>Town Cr. Bab</sup> @ 2700E

spike on line and a stake @ 2800E

2900E stakes not on line @ 3000E

spike on line and a stake @ 3100E

stake not on line @ 3200E spike

on line and a stake @ 3300E 3400E

3500E stakes not on line @ 3600E

spike on line and a stake @ 3700E-

3800E stakes not on line @ 3900E

spike on line and a stake @ 3960E

spike drove through a piece of red

cloth for temp W  $\frac{1}{16}$  cor Rec. 31-137

Harold J. Caro



Feb. 2 - 1921 (THE SUN SHINES)

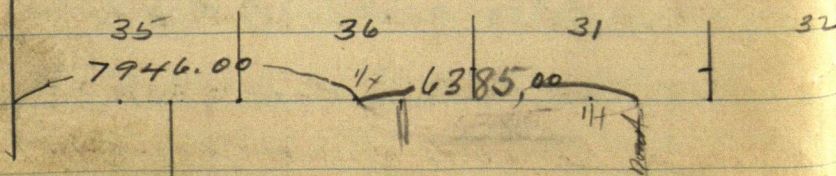
28... quite for night.

(NOTE)

We all take dinner with Mrs. Evenson. I arrive at Olsen farm at 7 o'clock supper and over night with Olsens. fix bubbles on transit and work on notes until 9 45 o'clock.

(NOTE)

Two members of the town board of I deal two come to see how we are getting along with survey and one of them are coming to work to morrow in Johnson place as Johnson is going to the farmers meeting



Harold J. Ciro



Feb. 3-1921

H. J. Johnson does not work.  
Alfred Cline works in his  
place. Olsen and I leave  
his place at 8 o'clock with  
his team and pick up Erickson  
at his place and drive to the  
W<sup>1</sup>/<sub>2</sub> cor south side of sec. 31  
137-28 where we meet Ole  
Hovum and Alfred Cline. We  
continue line east on south  
side of sec. 31-137-28. @ 4000 E  
4100 E stakes not on line @ 4200 E  
spike on line and a stake @ 4300 E  
4400 E stakes not on line. @ 4500 E  
spike on line and a stake @ 4600 E  
4700 E stakes not on line @ 4800 E spike  
on line and a stake @ 4900 E 5000 E stakes

Harold J. Curo.



30

136-137-28-29

30

## Board

Feb 1921

1	2	3	4	5	6 <sup>son</sup>	7	8	9
---	---	---	---	---	------------------	---	---	---

Boarding with Mrs. Erickson

	B.		B.		B.
SL	SL			SL	S.
	B.		B.		B.
SL	SL			SL	S.

H. J. Curo

O. M. O'sen

See Page 77

= 14 @ 35-  
 6  
 25<sup>sub</sup>

all paid by  
 May 18-1921 Curo



Note Sta "0.0." is  $\frac{1}{4}$   
Cor S. Side Sec 36  
place of Beg

Note: Harold  
most mean  
something else  
as this would  
be 26 to 40 E.  
Not 5200

Feb. 3-1921

not on line @ 5100 E spike on line  
and a stake @ 5280 E spike drove  
through a piece of red cloth for  
(31+32) (308)  
twp S. E Cor sec. 36- (Town corner  
137-28-29) @ 5300 E 5400 E stakes  
not on line @ 5500 E spike on line  
and a stake. Take dinner at  
Mrs. Evenson's.

P.M.

Continue line east. @ 5599.50 E  
spike used as a hub. @ 5600 E 5700 E  
5800 E 5900 E stakes not on line @  
6000 E spike on line and a stake  
@ 6100 E 6200 E stakes not on line  
@ 6300 E spike on line and a  
stake @ 6360 E wire fence two  
wires @ 6385 E center of road.  
N & S on two lines. road not finished  
Harold J. Curo



Feb 3-1921

@ 6400 E stake on east side of plowing  
of road. not on line @ 6410, 70 E  
spike used for Hub @ 6500 E  
stake not on line we chain up  
to 7000 E but do not have  
time to set any of them on line  
quite for night Ole. Hornum  
and Alfred Cline walk home  
Erickson, Olsen and I drive  
with Olsens team to Ericksons  
farm. and as it is too far  
to drive to Olsens farm and  
back every night and morning  
we have supper with Erickson  
and stay all night.

Harold G. Lund



## Board

Feb. 1921

1	2	3	4	5	6 <sup>Sun</sup>	7	8	9	10
---	---	---	---	---	------------------	---	---	---	----

Boarding With Mrs. M. L. Joseph

Harold J. Cars	-	-	-	D.	D		D	D	
Ole Hoium	-	-	-	D.	D		D	D	
O. M. Olsen.	-	-	-	D.	D		D	D	
Theo. Erickson	-	-	-	D.	D		D	D	
Alfred Cline	-	-	-	D.	D		D	D	

20 meals @ 35¢

see Page 77

all paid by Sibley  
 Twp May 11 1921  
 C. W. Cline



Feb. 4, 1921.

Snowing start for work  
and as it starts to snow  
hard turn back as we  
can not see but it does  
not snow very long so  
we start out again.

same crew. Ole Hovum  
and Alfred Clime are cutting  
line when Erickson, Olson  
and I arrive and we continue  
line east from station 6400 E  
@ 6500 E stake not on line @  
6600 E spike drove through a  
piece of red cloth for Temp  
E  $\frac{1}{4}$  cor south side of Sec. 31-  
137-28 @ 6700 E - 6800 E stakes  
not on line @ 6900 E spike on  
Harold J. Curo



Feb. 4, 1921

line and a stake @ 7000 F

7100 F 7200 F stakes not on line

@ 7300 F spike on line and a

stake @ 7400 F stake not on

line @ 7500 F spike on line

and a stake @ 7600 F stake

not on line @ 7700 F spike

on line and a stake @ 7800 F

7900 F stakes not on line @ 7920 F

spike drove through a piece of

red cloth for Temp Sec cor.

cor to secs. 31-32-137-28

All the crew got dinner with

Mrs. M. M. Joseph.

P.M.

Continue line east @ 8000 F

stake not on line @ 8100 F

spike on line and a stake

Harold J. Curo



Feb. 4, 1921

@ 8200 E 8300 E stakes not on  
line @ 8400 E spike on line  
and a stake @ 8500 E 8600 E  
stakes not on line @ 8700 E  
spike on line and a stake @  
8800 E 8900 E stakes not on  
line @ 9000 E spike on line  
and a stake @ 9100 E 9200 E  
stakes not on line @ 9240 E  
spike drove through a piece of  
red cloth for temp w  $\frac{1}{4}$  cor south  
side of sec. 32-137-28 @ 9300 E  
spike on line and a stake @  
9400 E 9500 E stakes not on  
line @ 9600 E spike on line and  
a stake @ 9700 E 9800 E stakes  
not on line @ 9900 E spike

Harold J. Curo.



Feb. 4 - 1921

on line and a stake @ 10000 E.  
10100 E stakes not on line @  
10200 E spike on line and a  
stake @ 10300 E 10400 E stakes  
not on line @ 10500 E spike  
on line and a stake @ 10560 E  
spike drove through a piece of  
red cloth for temp  $\frac{1}{4}$  cor south  
side of sec. 32-137-28. quite  
for night drive to Ericksons  
with Olen's team and stay  
all night with Erickson.

Harold J. Curo



Feb. 5-1921

Same crew we drive to  
the  $\frac{1}{4}$  Cor south side of Sec.  
32-137-28 where U.S.  
notes call for.

Pine 24 N 59 W 52 = 34.32 ft

" 12 N 2 E 54 = 35.64 ft

do not take time to look for  
these but continue line  
east on south side of Sec.  
32-137-28 @ 10600 E -  
10700 E stakes not on line  
@ 10800 E spike on line  
and a stake @ 10900 E 11000 E  
stakes not on line @ 11100 E  
spike on line and a stake  
@ 11200 E - 11300 E - 11400 E stakes not  
on line @ 11500 E spike on line



Feb. 5 1921

and a stake @ 11600 E stake not  
on line @ 11700 E spike on line and  
a stake @ 11800 E stake not on line  
@ 11880 E spike drove through a piece  
of red cloth for temp E  $\frac{1}{4}$  cor south  
side of Sec. 32-137-28. Crew  
take dinner with (Mrs M. H. Joseph.  
P.M.  
Continue line East. @ 11900 E stake  
not on line @ 12000 E spike on line  
and a stake @ 12020 E about enter  
round meadow with box in center  
@ 12100 E 12200 E - 12300 E stakes  
not on line @ about 12300 E. meadow  
@ 12400 E spike set on line with  
Transit. but as Theo. Erickson  
who is flagging did not get  
the spike at a right angle we



Feb. 5 1921

do not move the stake.

@ 12500E - 12600E 12700E stakes  
not on line @ 12797.40E spike  
drove through a piece of red cloth  
for temp. wit. con. to sec. 32-33-  
137-28 where U.S. Notes call for.

Pine 20 N 45° 45' E 300 LKS = 198.0 ft

Tam. 12 N 80° 30' E 305 LKS = 201.30

both zone @ 12800E 12900E - 13000E  
stakes not on line @ 13072E  
enter pond bears NW & SE @ 13100E  
13200E stakes not on line set on  
the ice Town board do not  
want to go any farther and  
want to go back  $\frac{1}{2}$  mile to  $\frac{1}{4}$  south  
side sec. 32, and stop road there,  
quite for night. Call up John W. Curo  
Harold B. Curo



Febr 6-1921.

Sunday stay at O.M. Olsen's  
all A.M. after dinner John W  
Curo and Harold Curo arrive  
at Olsen's in his car. and  
O.M. Olsen and I go with  
them to look for the B.T. to  
con. to sec. 32-33-137-28

But could not find a  
thing we meet M. G. Joseph  
in the woods and he goes  
with us to the  $\frac{1}{4}$  cor on  
the south side of sec. 32  
where we look for U.S. B.T.s  
but find them also gone  
so we will have to continue  
line east until we can  
find some known corner.

Harold J. Curo



Feb. 6-1921 Sunday  
we go back to where we  
had left the car and  
drive to M. G. Joseph. where  
we get a book with U.S.  
notes in it which we left  
in Transit Box. Joseph  
tells Caro the road to Ol. Horium<sup>S</sup>  
place and we drive there  
John W. Caro tell Ol. Horium  
who is on the town Board of  
Ideal. twp that we have to  
continue our line east we  
then drive to O M Olsens  
where we have supper.  
Harold and John W Caro  
go back to Brainerd I  
go with  
Harold J. Caro



136-137-28-29

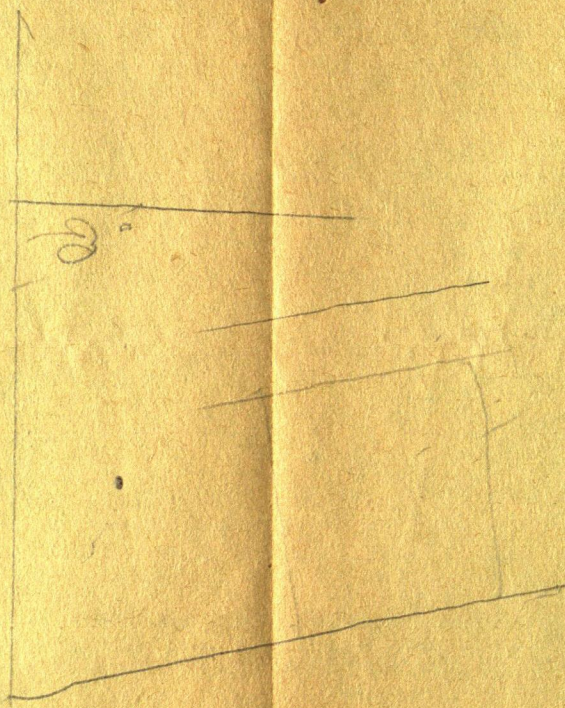
43

Feb. 6 - 1921

to church. and do not get home  
until 11-30 P.M.

Harold J. Curo





1287  
37  
 13 24.

13

1178  
125  
 1303

13244  
1303  
 21.4

80.0



Beg @ Im 1187 W and 650.67 N from  
SE corner 1/4 E 125 -- N 325 +- to water  
W 125 +- to pt directly N of pt of  
beg then to 55 +- to Im the  
corner S-270 - - - - -



Feb 7, 1921 Monday

Same crew Olsen and I  
leave his place at 7:00 a.m.  
and pick up Erickson we  
drive to W. G. Josephs where  
we leave Olsens team and  
walk to where we stopped Sat.  
night and continue line  
east on south side of sec.

33-137-28 @ 13300 E 13400 E

stakes not on line @ 13400 E about

leave lake and bog, @ 13500 E-13600 E

13700 E stakes not on line @ 13800 E

spike on line and a stake @ 13900 E

@ 13900 E enter bog N-SE @ 14000 E to same NE.

14000 E stakes not on line @ 14100 E

spike on line and a stake @ 14200 E

stake not on line @ 14300 E spike

on line and a stake @ 14400 E

Harold J. Curo



Feb. 7-1921

14500 E stakes not on line @ 14520 E  
 spike drove through a piece of  
 red cloth for temp west  $\frac{1}{6}$  cor. on  
 line @ 14600 E 14700 E stakes not  
 on line @ 14800 E spike on line  
 and a stake @ 14900 E-15000 E  
 stakes not on line @ 15100 E  
 spike on line and a stake  
 @ 15200 E stake not on line  
 @ 15300 E spike on line and a  
 stake @ 15400 E stake not on  
 line. quit for night Olsen  
 Erickson and I drive with Olsen  
 to Theo Erickson's where  
 we have supper and stay  
 all night. Ole Horum and  
 Alfred Chis walk home.

H. J. Curo



Time Sec P 8-96-76

Time Sheet Sibley Twp.  
Feb. 1921

8 9 10

Harold J. Curo 1

Theo. Erickson 1

O. M. O'sen 1

O'sens Team 1

Ole Hoium 1

Alfred Cline 1

all paid by  
Sibley  
1921  
Twp May 18  
Curo



Feb. 8-1921

Same crew. Leave Team in Joseph's barn and walk to.

spike @ 15300E and continue line east on south side of

Sec. 33-137-28 @ 15400E-

15500E stakes not on line @

15600E spike on line and a stake

@ 15600 ent marsh around lake

@ 15700-15800E stakes not on line

@ 15800E about edge of ice NE & S

@ 15840E spike drove through (on the ice)

a piece of red cloth for temp

$\frac{1}{4}$  cor south side of Sec 33-137-28

where U.S. Notes call for.

Aspen 12 N  $2\frac{1}{4}^{\circ}$  E 143 lbs. = 94.38 ft.

do not look for this as we

are sure it cannot be found

Harold J. Curo



Feb. 8-1921

@ 15900 E spike on line drove in  
ice and a stake @ 16000 E 16100 E  
stakes on ice not on line @ about  
16175 E the ice NW-SE enter marsh.  
@ 16200 E spike on line and a  
stake @ about 16225 off marsh  
foot of hill @ 16300 E 16400 E  
stakes not on line @ 16500 E  
spike on line and a stake @  
16600 E-16700 E 16800 E-16900 E  
17000 E 17100 E stakes not lined up.  
@ about 17100 E enter lake N & S @  
17160 E stake set for E  $\frac{1}{4}$  cor on  
ice but not on line @ 17200 E  
17300 E-17400 E 17500 E-17600 E  
17700 E-17800 E & 17900 E stakes  
not set on line @ 17900 about  
Harold J. Curo



Feb 8-1921

Lo lake N 4 S @ 18000 E - 18100 E  
 18200 E 18300 E 18400 E stakes  
 not set on line @ 18480 E stake  
 not on line, as it was too late  
 to see to put in a hut on  
 the east side of the lake and  
 as we are setting double centers  
 we could not live in the stakes  
 across the lake we look for the  
 Old U.S. B.T. for the cor to  
 sec 33-34 which are.

Yellow Pine 12 N 8° W 48 LKs = 31.68

" " 16 N 49° E 36 LKs = 23.10

we can not find rather as all  
 the stumps are burnt bad, we  
 then go and look for the M.C.  
 on the east side of the lake

Harold J. Curo



Feb. 8-1921

where U.S. Notes call for

Tam. 16 N 20° W 8 41 LKS = 27.06 ft

Norway Pine 24 N 70° E 33 LKS = 21.78

we see a stump that could  
be the NE Pine we then go  
across the lake and look for  
the M.C. on the West side  
of lake where U.S. Notes call for.

Elm 12 N 35° W 57 LKS = 37.62 ft.

White Birch 8 N 5° E 23 " = 15.18 ft.

but can not find either  
as it is almost six o'clock  
we quit and as the crew will  
not go on until J. W. Curo  
comes out and look for B.T.  
we bring in every thing Olsen  
and I have supper with Erickson and  
Harold J. Curo



Feb. 8-1921

Erickson goes to stay with Olsen

while we survey in sec. 26-136

(NOTE)

29. I lose the plummet just  
before dinner and use a nut  
tied to a piece of fish line for  
a plummet.

Harold J. Curo





Road in  
Sec 26-136-29

136-29

# Working For Sibley

Time Sheet T-136 P. 29

Feb 1921

9 10

John W. Curo

Harold Curo

Expense

Car.

Oscar W. Olsen 1

H. L. Johnson 1

Theodore Erickson 1

x Note: no pay for this day in Butte book book 4

run a second line. But Sibley will pay

has board

See Small Field Book  
for following items  
check May 18-1921



Road in ✓ 26-136-29

# Sibley Board-sheet

Board Sheet T. 136 R29  
Feb. 1921

9 10

Boarding With Mrs Olsen

Harold J. Curo SL B

John W. Curo

Theo. Erickson B SL B

Boarding With Mrs Wm Fish

D

Harold J. Curo

Cesar Olsen

H. J. Johnson

Theo. Erickson

See Annual Report  
for 7 Board Curo

May 11 1921



T 136-29

South side sec. 26

Sec 26

Feb. 9-1921

Johnson Olsen and Erickson  
start out for the south east  
cor to sec <sup>26</sup> 28-136-29 where  
they say they know where the  
cor is while I copy a few notes  
which I need. I follow them  
a little later at Wm Fish's  
place. Mr Fish goes over to the  
corner with me at the cor  
I drive a spike in the ground  
and start a line west on 80th

3280°	5210°
1554°	2112°
	2112.0
800°	2640°
7425°	1848°
5752.4	17845°
8000	635°
575°	75.34°
3450°	7425°
3150°	109°
379.50	

Hunted



Mar 31, 1921.

Afternoon PM

I go to Harold's knip on top  
 of hill set up T and then look  
 for B.T.'S. On the East  
 side of Lake I find a 24"  
 pine stump which is blazed  
 also an Old Tamarack. which  
 looks as though it will  
 check for course and distance  
 put in hut on ice and  
 then set M.C. from the  
 two stumps that I found  
 and they check for course  
 and distance.

at 17844.9 hut.  
 Corner brs E  $71^{\circ}$ N or N  $19^{\circ}$ E.  
 155.4 ft. Babcock



March 31, 1921

To preserve this point

I take New Bearings viz

V.  $8^{\circ}30'E$ , bet Mc 46 33, T136-137 R28

Elm 3 N  $18^{\circ}13'E$  23.75 = T137-R28

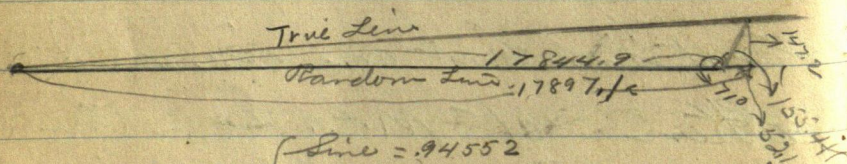
Cak 4 S  $55^{\circ}33'E$  20.80, T

136 R28

90

71

9



$$\begin{array}{r}
 71.0 \left\{ \begin{array}{l} \text{Line} = 9455.2 \\ \text{Cosine} = 3256.6 \end{array} \right. \\
 \begin{array}{r} 9455.2 \\ 155.4 \\ \hline 37820.8 \\ 472760 \\ 472760 \\ 9455.2 \\ \hline 147233.08 \end{array} \quad \begin{array}{r} 3256.6 \\ 155.4 \\ \hline 13024 \\ 17780 \\ 17780 \\ 2356 \\ \hline 5224824 \end{array}
 \end{array}$$



Mar. 31, 1921.

$$17844.9 + 5212 = 17897.1$$

$$\begin{array}{r} 17897.1 / 147.2000 \quad (.0082) \\ \underline{143 \quad 1768} \\ 4 \quad 02420 \\ \underline{3 \quad 47942} \\ 54518 \end{array}$$

Each foot E gives N.0082

300 E	gals	N.02
525.2 E	"	N.43
900 E	"	N.76
1200 E	"	N.78
1320 E	"	N.1.07
1337.2 E	"	" 1.09
1800. E	"	" 1.47
2100. E	"	" 1.48
2400 E	"	" 1.50
2640 E	"	" 2.16
2700 E	"	"



April 1, 1921 Toolest -  
 Each foot East goes N. 0082  
 Starting at 11700 E I corrects  
 back W..

11700 E	goes N 95.94
a 3x2x18" Oak hub - stake being	
(N.P. Old witness tree, stands	
N 30° E about)	48.1 ft.
(N.P. 10 N 250 (about))	49.40 ft.
11500 E	goes N 94.30
11100 E	" " 91.02
10800 E	" " 88.56
10500 E	" " 86.10
10200 E	" " 83.64
9900 E	" " 81.18
9600 E	" " 78.72
9300 E	" " 76.26

changed May 14



April 4, 1921. Contd.

9000 E gold N 73.80

8700 " " " 71.34

8400 " " " 68.88

8100 " " " 66.42

7800 " " " 63.96

7500 " " " 61.50

7300 " " " 59.86 sup

6900 " " " 56.54

6600 " " " 54.12

6300 " " " 51.66

6000 " " " 49.20

81.857  
49.20  
31.65

5400 " " " 44.28

5100 " " " 41.82

4800 " " " 39.36

4200 " " " 34.44

3900 " " " 31.98

3600 " " " 29.52

changed May 14 1921



See p. 85 for later correction

April 1, 1921 Const'd

1 3200 E ~~gives~~ N 26.00

1 3000 E " " 24.60

At 6900 E on true line  
I start to Meander around  
a hollow for a road.

6900 E = Station 0.

See p. 85  
Ch 9

Fr. Stat. ON 63459' W 167.5 to stat. 1

" " 1 N 82° 09' W 127.85 " " 2

" " 2 S 68° 05' W 252.1 to " 3

to a hub in E of running South  
and also at 6389.4 E where it  
intersects the 9<sup>th</sup> Standard  
Parallel.

Five O'Clock

J. P. Babcock  
Assist Co Surveyor.



1800.00  
39.70  
1760.30

See pg 86 Later correction

April 2, 1921

Starting from 3300 I  
Continue Correcting west.

2700 E goes N 22.04 ✓

2400 E " " 19.68 ✓

✓ 2100 E " " 17.22 + 6.61 = ✓

✓ 1800 E " " 14.76 + 566

I find an old blazed tree  
and then look for another  
and I find both of the spring  
trees for the cor to see. 318

36 T 13.7 N, P 28 & 29 W.

but do not set no corners  
as I want Cuss to look over  
my notes.

from 1800 E on true  
line down W 39.7 ft and  
start to angle around



April 2, 1921 Continued -  
From Station 0.0 Iron

N 55° 34' W 293.5 ft to Stat 1  
From Sta. 1 N 49° 59' W 144.7 " " " 2  
" " 2 N 80° 18' W 48.1 " " " 3  
" " 3 S 71° 30' W 123.65 " " " 4  
" " 4 S 67° 07' W 248.9 " " " 5  
" " 5 S 69° 14' W 165.63 " " " 6

Sta. 6 = 16 d Nail in stump

From Sta. 6 N 71° 45' W 539.0 ft to Sta. 7  
" " 7 S 63° 28' W 115.1 " " " 8  
" " 8 S 42° 14' W 231.25 " " "  
" " 9 S 70° 07' W 89.8 " to 10 =

Harold's Cross's  $\frac{1}{4}$  Cor bet sec  
2 T 136 N R 29 W + sec 36, T 137 N R 29 W

Go to Piquet to Catch  
Freight to Brd but have to  
stay over as it has all



April 2, 1921. Cont'd  
ready left for the south,  
stay at Ranger Hotel,  
to go at midnight

Gen. S. Babcock.  
Asst. Co. Surveyor



Part of Harold Curo's Notes

M.C. Bet. 35 + 36 T1374 R29W

S. of Hay Lake.

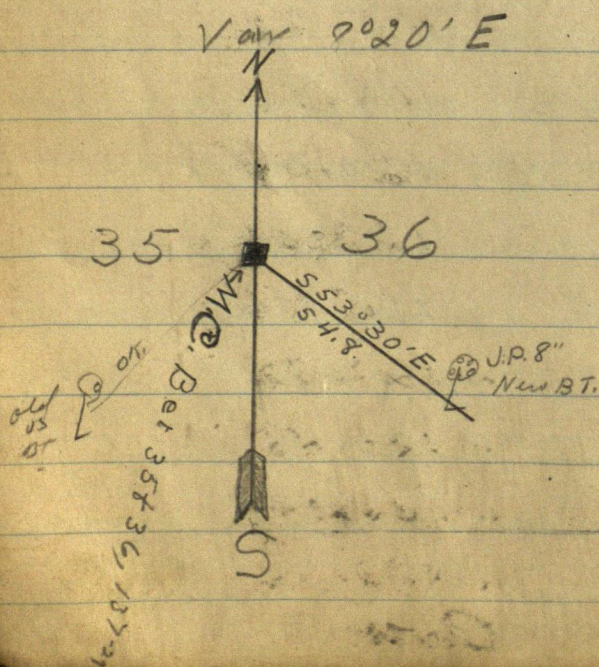
1544 Lbs. N Var 10°20'

B.P. 85 29½ W 52 = 34.32

" " 85 36½ E 21 = 13.86

New B.T.S.

J.P. 85 53°30' E 54.8





Starting from 11,700 Correction

E =

12000	gals	11	98.40
12300	"	"	100.86
12600	"	"	103.32
12900	"	"	105.78
13200	"	"	108.24
13500	"	"	110.70
13800	"	"	113.16
14100	"	"	115.62
14400	"	"	118.08
14700	"	"	120.54
15000	"	"	123.00
15300	"	"	125.46
15600	"	"	127.92
15900	"	"	130.48
16200	"	"	133.94
16500	"	"	136.40

Over.



# Correction Continued

16800	gals	N	138.86
17100	"	N	141.32
17400	"	N	143.78
17700	"	"	145.24
18000	"	"	147.90

Correction West from 1800  
=

1500	gals	N	12.30
1200	"	N	9.84
900	"	N	7.38
600	"	N	4.92
300	"	N	2.46

W. D. Sibley  
Field Notes of the  
North Standard Parallel  
Surveyed 1921.  
D. Babcock



67  
May 4 - 1921 - Wed

Babcock & I get dray and take 115 TMS  
and anchor rods to depot & 2. Dray

May 5 - 1921 Thursday

115 TMS 1500 # 115 anchor 90# - 1590#  
\$ 2.46 pd by Cues freight to Pequot.

Bab and I bill rows and drive to  
Pequot Lunch 40. & Car fix \$3.

Bab walks to Erickson farm and  
back to Alson place

We bring 10. TMS and anchor in car  
Cues goes on to Buchile farm

May 6 - 1921 Friday

Babcock cannot work because I  
lost his chain.

I pay Wm Buchile Ch \$10.  
for alman board making in all \$30.  
to Buchile. We drive to Alson farm

P.M.

Babcock and Alson work in survey  
on N side sec 26-136-29

Erickson with Cues and car drive  
to Jenkins. L. Alson then drive East  
Pick up Mr

also Kline. Town board and  
go to SW cor 34-137-28 then west line  
on E side Long Lake 9th St Parallel  
find old BT Stamp Check stake on O.K.  
set by Babcock Mark pt N 45° E 45 ft  
and S 45° E 45 ft for unit meas. then back  
to Jenkins and Pequot. Take Erickson home and  
then back to Alson. get supper 8.30 P.M.  
Alson also at Jenkins

John A Cues

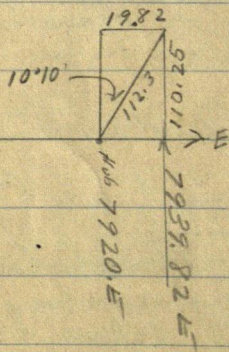


68

May 7-1921.

Sat Olson-Erichson and Curo  
find 2. BT stumps @ South Cr 31-32  
T137 R28. Both stumps show  
scribe marks plain & small  
slats for trees on OK @ 6.0

at Temporary corner Hub 7920 E  
this line corner set  $N 10^{\circ} 10' E$   
 $60 + 52.3 = 112.3$

 $10^{\circ} 10'$ Sine  $17651 \times 112.3 = 1982$  ft ECosine  $98430 \times 112.3 = 110.25$  " N

at 7939.82 East this corner  $N 110.25^{\circ}$

Curo-Bat-Erichson take dinner with  
Olson.

P.M.

Curo and Cur take Olson & Erichson to  
Beamed-Meet Co Commissioners who  
grant us \$180. for IMS @ 16¢ and to pay  
E up work. Curo's estimate on 9th  
std. Parallel from SW Cr 34.137-28  
also

B 47. to monument covered work on 23-13669  
Bat & crew work on 26.

John W Curo.



May 8 - 1921 - Sunday

Babcock stays with Alon

I take Alma and Reed drive to Pequot  
get ice cream and lunch \$1.16  
go to Jenkins. get lunch at Wesley's  
with Harold - Guy told wife Harold  
not but Ford. Co.  
P.M.

I take Wesley and Mattie drive to  
Deerfield - Wesley buys pig & goat  
Luton \$3. Stop at Leonard  
Remery farm on our way back.  
also drive to Alma's old "Sleeper  
farm" then home. to Jenkins  
then back to Alon's where  
Alma - Reed and I get late supper

Jwc.



May - 9-1921 Monday

We all work on 9th Std Parallel

Curo + Cor. take Bat. + Olson to Pequot  
get 10. Ims go to Erickson's pick him up  
dinner to Hall on No side Long Lake

get his boat Hall goes across lake

Must

Kline and

Salsberry

set 3. Ims at M.C. on 9-std Parallel E of  
LakeHall and Tom Salsberry go with me  
across lake find C.C. at N Cr 4-5-

136-28 Balhald BTS.

No pay for Hall + Salsberry

Kline goes home to dinner - Curo-Olson  
+ Babcock eat dinner with  
Erickson

P.M.

Erickson and his Maxwell takes Olson  
and Bat to Trp Cr 31-36-137-28-29

They find bath BT Stamp - set corner

at Harold's Temporary  $1/4$  Cr @ 2640 Eastthe Trp Cr set E  $74^{\circ}30'N$  31.2

Curo-Bab-Olson Substn With Erickson

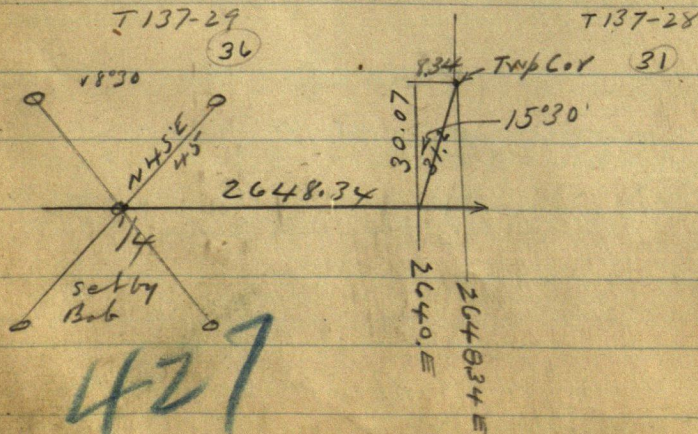
 $74^{\circ}30'$ Sine  $96363 \times 31.2 = 30.07$  Northcosine  $26724 \times 31.2 = 8.34$  East

T 137-29

(36)

T 137-28

(31)





9th Standard Parallel  
Bet

71

May 10-1921- Tuesday

Cuss + Con - Erickson + Con - Kline + Con

Cuss goes with his con

Bab + Cuss take Olson to Pequot  
drive East 1 mile get Erickson and  
back to Pequot

Erickson gets his con at Ach Ho  
goes with Olson + Babcock

Cuss driven to Joseph farm  
meets Kline and his con

Kline and Cuss check measure station

137-29

Bab and Crew set 4 I.M.S. @ Co line 34-35

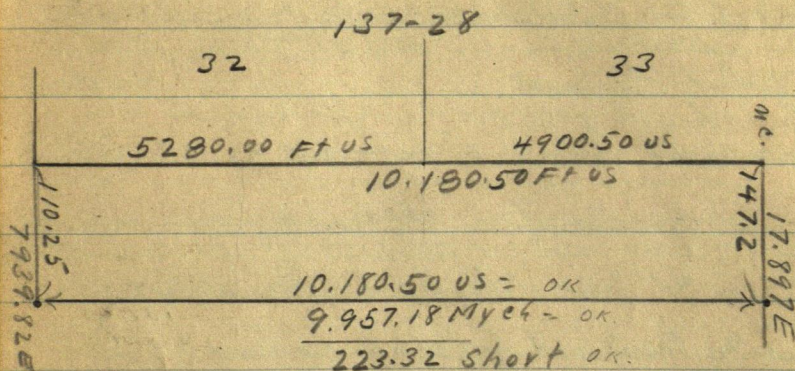
also 5 I.M.S. @ 33-34-137-29

also 5 I.M.S. @ Twp Co V SEC 137-29



72

May 10-1921 Tues



223.32 ft short in 10.180.50 =  $\frac{.021936}{.021936}$  ft short  
 (coll. 7.22)

1320 - short	29.04 =	1.290.96 - W' 1/16
2640 "	58.08	2.581.92 = 1/8
3960 "	87.12	3.872.88 = E' 1/16
5280	116.16	5.163.84 = seen

6600 ft short 145.20

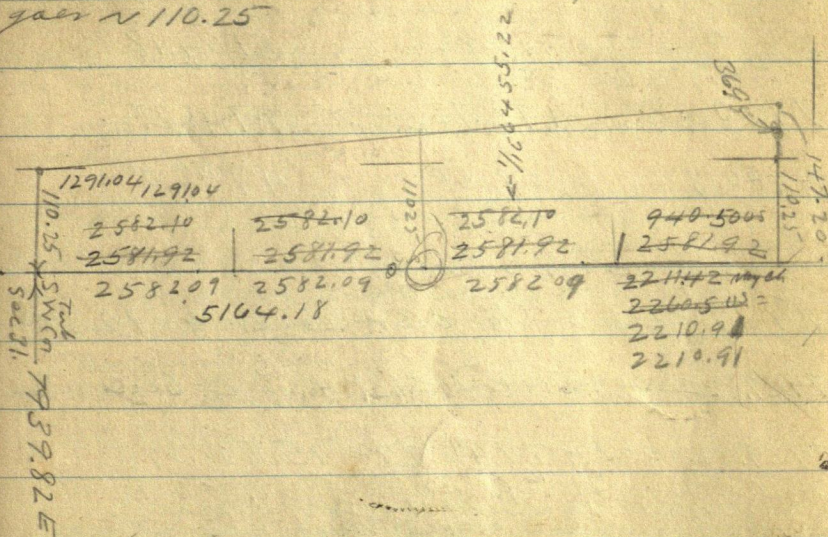
1320 short

2640 " 2582.09 = 57.91



Correcting  
 cor to North  
 At Herald's random Point.

At 10.521.74 E in 2581.92 E 7 SWC 32  
 gaer N 110.25



9.957.18 into 36.95 =  $\frac{00\ 37\ 11}{00\ 38\ 46} = 0^\circ 13'$   
 Plus always the 110.25

2581.92 - N 9.85 + 110.25 = 120.10  
 9.58 + 110.25 = 119.83

0.0. =  
 Stake MKd

T13728

7939.82 E in 0.0. and gaer N. 110.25 T. SWC 32



sknt, 021936

2640 sknt 57.91 and is 2582.09

5250 " " 115.82 " " 5164.18

7920 " " 173.73 " " 7746.27

4900.5 " " 107.50 4793.00

$$7939.82 - E = 814 \ 0.0 + 2582.09 = 10.521,91$$

$$7939.82 E = 00 + 5164.18 = 13,104.00 \ E = \text{Sec Cor in lake}$$

$$7939.82 = 00 E + 7746.27 = 15.686.09 E = 1$$



May 11-1921-Wed

75

Correction .003711 N  
+ 110.25

Stake

12.804.00 E is 4864.18 E of O.O.

and 300.00 ft west of corner in lake @

South corner of sec 32 and 33-137-28

and goes N 110.25 + 17.05 = 127.3 ft

To a point 300. ft west of the corner  
in the lake

At spike 12.797.40 we chain = 2.60 ft to

Stake 12.800.00 then 4.00 ft to

12.804 which is 4864.18 East of SW cor  
of sec 32.

Then we chain North @ 90° 127.30 ft  
to pt on line 300 ft west of SE cor

Sec 32-137-28

Cur and Car like Bob + Olson to Erickson.

Get 10 I 195.

Get Andrew Nelson to help identify 1/4 on  
So side 32-137-28 all marked zone

Cur-Bob-Olson take dinner at Erickson's  
PM.

Pick up Andrew Sampson - take him  
to same 1/4 cor where we meet John  
Erickson and again Andrew Nelson  
With these 3 old settlers who were  
with Surveyor Whiteley 18 years ago  
try to find stumps of old B.T.S.

John Erickson slaps his hand on  
a stump and says he is ready to  
swear that it was the old US B.T.  
show me a slab off the stump which he  
claims show iron marks

I promptly tell him it is NOT the US  
B.T. and that the marks are NOT scribe

Cont'd Pg 78. 0



See Page  
8-46-96-76

May 1921	T <sub>3rd</sub>	Time Sheet	9 <sup>th</sup> Std Parallel											
5	6	7	SUN	8	9	10	11	12	13	14	15	16	17	18
JW Curo	1 1/2	1	0	1	1	1	1	1	1	1	0	1	1	1
Exp	dry 82.46		0	-	-	-	-	-	-	-	0	-	-	-
Car	1 1/2	1	0	1	1	1	1	1	1	1	0	1	1	1
SP Baberish	-	-	0	1	1	1	1	1	1	1	0	1	1	1
DM Olson	-	1	0	1	1	1	1	1	1	1	0	1	1	1
Theo Erickson	1	1	0	1	1	1	1	1	1	1	0	1	1	1
Erickson Cor	1 1/2	13	0	1 1/2 PM	1	-	-	-	-	-	12	0	-	-
Alfred Cline	1 1/2 PM	-	0	1	1	1	1	1	1	1	1	0	-	-
Cline Cor	-	-	0	-	1 1/2	1 1/2	Boat	Boat	Boat	Boat	0	-	-	-
Could	1 1/2 PM													

Note  
This 6 days  
Tide paid for by  
Crown Wing Co.  
Board all paid  
by Sibley Turp  
Curo

2x6 - call Tim  
2 days via 9-14  
@ \$2.00

Note: This was all paid by Sibley Turp  
May 16-1921 except last six days for  
Curo and car May 14 to 17-1921 which  
is to be paid by Crown Wing Co.  
Sibley paid Curo's board for the last six days also. Curo



# Board sheet May 1921

*paid May 14 1921*

77

	5	6	7	SUN 8	9	10	11	12	13	14	SUN 15	16	17	18	19
With O.M. Olson															
JWCuro	28	D	DB	B	B	B	B	B	B	B	D	D	D	D	B
IP 22	13	SL	SL	SL	L	SL	SL	SL	SL	SL	L	SL	SL	SL	B
Babcock	5	See O.M.	1200h		B	D	B	B	B	B	D	D	D	D	B
Theo Erickson	3	D	D	0	-	-	-	-	-	-	-	-	-	-	-
Almq		D	L	4	SL	4	4	4	4	4	3	4	4	4	1
Reed		D	L	4	SL	4	4	4	3	4	4	3	4	3	1

With Theo Erickson															
Curo				D		D			-	-	0	-	-		
Bab				S		D			-	-	0	-	-		
Olson				D		D			-	-	0	-	-		
Cline				S					-	-	0	-	-		

With M.G. Joseph															
Curo					D		D	D	-	0	-	-			
Bab							D	D	-	0	-	-			
Olson							D	D	-	0	-	-			
Erickson							D	D	-	0	-	-			
Cline					D		D	D	-	0	-	-			

With S.P. Solberg															
Bob					D				-	D	0	D	D		
Olson					D				-	D	0	D	D		
Erickson					D				-	D	0	D	D		
Curo										D	0	D	D		

With Andrew Nelson															
Alfred Cline															

not Paid

D.B

SL

May 18-1921

15



marker but "Worm Marks"

This stump is positively not the old U.S. BT and I tell them so

John Erickson then says that  
Probably it is not the U.S. BT. but  
may have been worked by W.A. Carson  
his surveyor when he cut the pine  
on the land SW.

Henry Larson who owns the land on the  
south says he is willing to accept  
my line which runs 2. miles straight  
at E and W

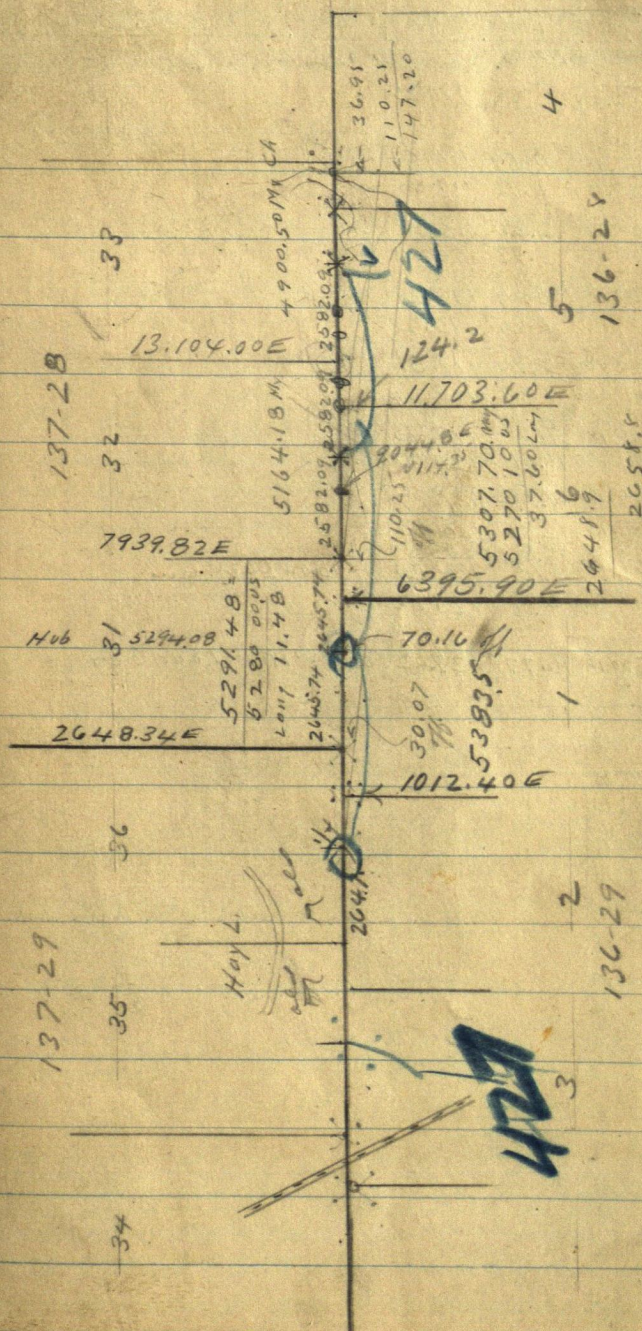
At the 1/4 mile he says it is O.K. with him  
the old E & W crosshairs would say  
this point about 75 ft north

Andrew Sampson, old  
John Erickson } witnesses  
Andrew Nelson } N.G.



All  $\bigcirc$  2x48-3 1/2" Round oval  
 $\bigcirc$  2x48 3x4 oblong oval  
 no cement

79





Hub Mnd E an	ISE of SYNCR Sec 22.	And good N 110.25 + 110.25	= Total North	
7939 82	0.00	+	110.25	
8100	160.18	0.59	110.81	
8400	460.18	1.70	111.95	✓
8700	760.18	2.81	113.06	✓
9000	1060.18	3.93	114.18	
9300	1360.18	5.04	115.29	
9600	1660.18	6.15	116.40	
9900	1960.18	7.26	117.51	
10200	2260.18	8.39	118.64	
10500	2560.18	9.50	119.75	
10800	2860.18	10.61	120.86	
11.100	3160.18	11.72	121.97	
11400	3460.18	12.83	123.08	
11500		13.21	123.46	
11700	3760.18	13.5	124.20	Hub on E. W. line
12000	4060.18	15.07	125.32	
12300	4360.18			
12460	4520.18	16.77	127.02	Stake - N. K. Road Cen
12600	4660.18			
12900	4960.18			
13200	5260.18			
13500	5560.18			
13800	5860.18			
14100	6160.18			
14400	6460.18			
14700	6760.18			
15000	7060.18			
15300	7360.18			
15600	7660.18			
15900	7960.18			
16200	8260.18			
16500	8560.18			
16800	8860.18			
17100	9160.18			
17400	9460.18			
17700	9760.18			
18000	10060.18			



May 12-1921 Thursday

81

Crew and Cor lake Olson & Battered  
to work via Pequot. Pick up 10. IMS.  
Then Erickson and drive to Josephs.  
Reed comes along.

Meet Chino at Josephs.

Bob Erickson and Olson put in 5 IMS.

@  $\frac{1}{4}$  on South side 32-137-28.

Urg N 45° E 45 ft. & C.

Crew and Kline Bge @ sta 12.804.08 E  
Chain 90° N 128.3 and set Hub for Wit. Mon  
(Oblong) to be set 300 ft west of Cor 32-33-  
137-28. in lake.

We then put in hub @ 12.460. E and @  
90° run north 127.00 and set Hub ruled  
True line - Road Cor.

Bob & crew come up and @ random  
spike 11.700. E Turn 90° and run North 124.20  
put Hub on true E & W line a few feet west of  
C.C. @ N-Cor to 5 and 6 - T 136-28.  
all get dinner with Josephs.

P.M.

Whole crew lake IMS. and walk East to  
 $\frac{1}{4}$  on So side Sec 32-137-28

At Sta 15.600. E Chain East 86.09 T.  
15.686.09 set Hub Turn 90° and run North.

7746.27  
+ .0037.11  
7746.27  
7746.27  
542.2389  
232388.1

28.75  
110.25  
139.00

Run North 139.00 ft set 5.  
IMS. for  $\frac{1}{4}$  Cor  
V 8' 15' E

Kline-Reed and I walk east to  
spike 16.200 Chain 175 E to top of hill  
@ 16.375 Then we find Horalds spike  
@ 16.500 E from which all chain up rough  
hill East 266.8 to Horalds spike on hill  
16.766.89 E



at 16.800 stake 16.815 E set hut SE slope  
of hill set transit line 90° run north  
at stake

Stake 16.815.00 east - 7.939.82 =

$$8.875.18 \text{ E} \times .003711 = \cancel{29.22} + 110.25 \\ = 32.94 + 110.25 = 143.19 \text{ Huber} \\ \text{E + W line}$$

Our line N. cuts 1.20 E of C.C. and extends  
23.60 ft. N. of C.C.

We set the row of sticks 1.20 ft west so as  
to cut thru the 1st C.C.

Then figure the 23.60 stake so as to give  
it the 0° 13' 1" throw same 90° to line E + W  
9 ft standard parallel which figure  
.003711 W or  $\times 23.6 = 0.10$  West

Temp 143.19 goes west 1.30 ft to  
Pt in line C.C.

Set 5 TMS N 45° E 45.0 ft along SW -  
NW and SE

12' Boxwood beam N 45° E ~~24~~ 37.9 ft

1. Plot spot on SW side TMS sets behind  
this & line so we don't care to cut it  
For her reads 7° 45' E but angle on  
turned from E + W line (about)

8.873.88 ft East of SW Cor Sec 32.  
137-28 The C.C. Bet 4 and 5 T 136-28  
beam North 143.19 ft

The E 1/4 on South side Sec 33 T 137-28  
should be 9.037.31 E of SW Cor Sec 32 or  
163.43 ft East of C.C. Bet 4 and 5 of T 136-28



May 13-1921 Friday

Cries and Cor take Batcock Olson and  
Erickson & 5 I.M.s to Joseph meet Klein  
and his car @ stake 4. 350 Chain E of 95.04  
Walk E of stake @ stake 4. 350 Chain E of 95.04  
1. 14. 395.04 East. then 90' walk being  
 $5164.18 + 1291.04 = 6455.22 E$

Then 90' walk  $23.95 + 110.25 = 134.20 ft$   
and also 211 (5) for  $W \frac{1}{16}$  South Sec 33-137-28

Find post too thick to set corner so set  
2 x 2" iron stake for true  $W \frac{1}{16}$  South sec  
Sec 33-137-28 take NW B.T.S. 4-3

No comparison between corners E & W  
Chain is perfect

Tam 105 - about 402W 11.80 FT  
" 85 " 80° E 3.40 " Both trees about  
in check

Coming West to E side of lake E of  
NW corner 33-137-28 west west Cor  
Dist E to corner in lake is 5164.18

$5164.18 + 800 = 5.964.18 + \text{The } 7.939.82$   
 $= 13.904.00$  East on our random line  
where we set Hub. Turn 90° run  
North viz  $5.964.18 \times .003711 = 22.13 + 110.25$   
 $= 132.38$  ft North left on 9th

Std Parallel 800 ft E of SW cor 33-  
Set oblong wit man MKd WIT-ON  
800 East Sec 33-137-28  
MKd WC. SEC 33-800 F. E  
all lake dinner with Joseph  
P.M.

Bat and crew put in I.M. (06/1019)  
WC. 300 W of SEC 32 137-28

Then come west to CC. @ N cor Sec  
5-6-136-28

US Nalis call for } NP 8552° E 43 = 28.38  
DP 6547W 55 = 23.10

We put in corner SE BT. @ 830' which checks with  
old fence cor over



May 13 - 1921

Then  $\bar{X}$  @ spike on random @ 11.700.00 E

line 90° and run north

$$11.700 - 7939.82 = 3.760.18 E$$

$$3.760.18 \times .003711 = 13.95 + 110.25 = 124.20$$

Haber line 90° Std parallel when we set transit back right South on 18° spike 11.70°

line 90° Left then 0° 13' run and run East along line line

3.60 to intersection of sec line 29.40

So of old US. CC. Bet 5-6-7136-28

At Stake 11.703.60 E. on random on

CC sets north 124.20 ft

Put in 5 IMS N 45° E 45 ft

Curot & Co and Clinco & Co take

crew 1 1/2 miles west to 1/4 Sec 136-28

US. Nails call for

$$\text{Pin } 16 N 42^\circ 45' W 420 \text{ LKS} = 277.20 \text{ ft}$$

$$\text{" } 15 N 49^\circ 30' E 493 \text{ " } = 325.38 \text{ ft}$$

Both stumps obliterated and probably gone we find 2. old stumps which almost check for distance but are about 2 rods too far East

Dismissing these stumps as and would say our 1/4 Ch probably 4 ft N and 30 ft East as they may NOT be the 105-135 we pass them up and put in the 1/4 straight

At 5280 spike chain East 17.08

To 5294.08 Then turn 90° and run north 70.16 ft set transit on 1/4 Hat turn 0° 52' Left to establish meridian then set Haber for 5 IMS.

and quit in sleet & cold

John W. Carr



May 14-1921 Sat

85

Figuring corrections to rid 31-  
 $13728 = .001515 + \text{always } 30.07$   
 $= 0.52' N.$

2648.34 E gain N 30.07 1/2 SW Cor 31. Trip Cor  
 2700 E gain N 30.07 +

Hub Nrd Elev	E. E. of SW Cor 31.	and gain N 30.07 +	Total North	
2648.34	0.0	+0.0	30.07	To SW Cor 31
2700	551.66	0.79	30.86	✓
30.00	351.66	5.34	35.41	✓
33.00	651.66	9.88	39.95	
36.00	951.66	14.43	44.50	✓
39.00	1251.66	18.97	49.04	✓
42.00	1551.66	23.51	53.58	✓
45.00	1851.66	28.06	58.13	—
48.00	2151.66	32.60	62.67	✓
51.00	2451.66	37.15	67.22	—
54.00	2751.66	41.69	71.76	✓
57.00	3051.66	46.24	76.31	—
60.00	3351.66	50.78	80.85	49.20 + 31.65 = 80.85 ✓
63.00	3651.66	55.33	85.40	
66.00	3951.66	59.87	89.94	
69.00	4251.66	64.42	94.49	✓
72.00	4551.66	68.96	99.03	✓
75.00	4851.66	73.51	103.58	✓
78.00	5151.66	78.04	108.11	✓
7939.82	5291.48		110.25	

See p. 60.

7300 gain N 59.86 + 40.68 = 100.54



May 14-1921

Figuring correction for East  $\frac{1}{2}$   
mile on road see 36-137-29 -

0.0 gauge North	0.0 =	$\frac{1}{4}$ Cor Smd 36.
300 E gauge "	3.40	
600 " " "	6.80	
900 " " "	10.21	
1200 " " "	13.62	
1500	17.02	
✓ 1800	20.42	14.76 + 5.66 =
✓ 2100	23.83 ✓	
✓ 2400	27.23 ✓	
2648.34 "	30.07	To Twp Cor

See p 61

Cure and Car take Bab & Alen to  
Piquet pick up 9 I.M.S. Meet Erickson  
and his car

We do not need Erickson's car and I  
tell him so but he takes it along  
anyway.

Bab and I drive to Salberg farm  
order dinner to be ready @ 2. PM  
walk east find Cline waiting

Cline did not get home last night  
stripped gear on his Ford and  
staid all night with his father-in-law  
Andrew Nelson

Bab & crew put in I.M.S @  $\frac{1}{4}$  road 31-137-28  
5 I.M.S N45°E 45. FC

Cline and Cure walk E on 15 CC. Twp Cor  
N corner 1 and 6 7136-28-29  
US water call for



6396.2 E

87

we find tall stumps of SW BT plainly visible  
from which are put in pt for OS CC.  
Lined from new plowed road running 2  
miles South over road 80° 15' set picket line S.  
The SE BT is gone we find 2x12" I.M.  
one inch East from OS CC.

Then to corner

@ 6396.2 E turn 90° and run North

Correction = .001515 + 30.07

Hub 6396.2 is 3747.86 East of 90. n NW Cr  
T 136-28 and given N 56.78 + 30.07 =  
86.85 N at which pt CC. bears N about  
to a point 3.30 S of OS CC.

At Hub 6396.2 E turn 90° and run N 86.85  
ft to line then back West 0.30 of a foot  
to N 86.85 picket line at 119. Last where  
we put in line CC. at pt 3.30 S of OS CC.

At 6395.90 E our CC bears north  
86.85 ft

To put in the 1/4 Cor on N side. Sec 6  
136-28 OS Chain is 5270.10 ft and is 5307.70  
my chain being 37.60 long.

5270.1 into 37.60 = .007135 of a foot long  
in each foot OS chain

2630.1 OS W half long 18.7657 (18.8)

2640.0 OS E 1/2 " 18.8364 (18.8)

2630.1 + 18.80 = 2648.9 W. side

2640.0 + 18.80 = 2658.8 E side

6395.9 + 2648.9 = 9044.80 E turn  
90° and run North

56 9.044.80 is 1104.98 E of NW Cr 31 @

1104.98 x .3711 = 4.1 ft + 110.25 = 114.35 ft

At 9.044.80 E turn 90° N 114.35 ft and  
set I.M. (1) 1/4 N side 6-136-28.



88 May 14-1921 Sat Co + Top work  
136-177-28-29

@  $\frac{1}{4}$  Cor N rd. 6-136-28 we set

(1) one I.M. mhd  $\frac{1}{4}$  - 6-  
set in SE slope of low hill 1360 is

JP 85 57°42'E 84.25 8.5

" 4 N 12°25'E 87.10 ft

Turned from line E + W line

Cline eats dinner with Andrew Nelson  
Lv field @ 2-30 on Salbergs 3 PM.

eat dinner with back put in 5 I.M.S

@ C.C. Bot 1 and 6-7 136-172829 Trip car  
very along all set N 45° E 45 and 2000  
8°15' S.

The NE I.M. we set flush with the ground  
because the road here will turn NE  
around deep ravine

The SE I.M. sets a stone and sets 20"  
above ground. we make 6 ft mound.  
SE & NW mounds about 12" hi

Quit about 5-15 PM.

walk a mile West

Cline goes in Enckson's car  
Cure - Bob and Olson go home via Pequot  
Stop at Pequot get shoes - Pay Everett  
Garage bal of St. Louis then go  
home to Olson's cold - almost snow

John W. Cure



Sunday May 15-1921

All day with Olson - Cold - windy

P.M.

Alma Reed and I drive to Jenkins -  
find Wesley and get gone - I hitchhike  
a key - get in the house - Alma and I  
start supper - Wesley, Mattie, Mary and  
baby return from Business at 5-30  
We stay for supper and go back to Olson @  
9-10 P.M.



May 16-1921 Monday

Cisco and Cor take Bab and Olson  
drive to Pequot pick up Theo Eichman  
and one T.M.

Find Bohem cliff on hill spring of an  
telephone Judge Alderman and Clark  
where the road runs up cliff on SW side  
drive to C.C. Box 1 and 2-136-29  
where US notes call for

BP 8 S 28° E 110 = 72.60

" 6 S 56° W 70 = 46.20

We find both old stumps plainly marked  
B.T. from which we set the C.C. small knot  
by flat chain for two of stumps after which they  
stand as follows  
@ 8° S

SW stump stands S 42° 21' W and 80

SE " " S 33.17° E

From our US C.C. a large 14' flat stone  
+ in top beam S 33.17° E 1/2 foot (.50) 1/4  
foot

From our wood C.C. we run South @ 8° S  
cutting off or intersecting our random  
at 1012.40 East of 1/4 on So side in 36.137-29

From 1012.40 East on random we chain  
North @ 90° - .0011347 = 11.48 ft  
to line 9th standard parallel at a point  
at a point 15.20 ft South of US C.C.

We put in 5 I.M.S. N 45° E 45 ft C.C.  
@ 8° S

Dinner with Salberg  
P.M.

at Cor to 35-36-137-29 where US  
notes call for Pin 12 N 68° E 82 = 54.12  
" 10 N 37° W 49 = 32.34



Mar 16-1921

91

we find NE stump plainly marked  
and dead tree down NW

We first establish a straight line  
from SW corner 35 East  $1\frac{1}{2}$  miles to  
 $\frac{1}{4}$  on so side 36. then from the NE  
stump we chain SW 54.12 ft  
to an intersection with line E & W  
line at which point we set sec corner  
after which old NE BT bears  
N  $75^{\circ}20'E$  54.12 ft.

and NW BT checks for course and  
distance as near as we can tell  
by roots hanging in the ground.

We set hub for 5 TMS N  $45^{\circ}E$  40  
ft. Erickson and Cuss check chain  
Horalder road down from  $\frac{1}{4}$  corner West  
and find distance 2647.00 ft to  
SW corner 36-137-29.

Left @ 4 P.M. drive to Payson get clip @  
P.O. Scenic Garage run by Day &  
Johnson put it in. Charge 50¢ out &  
give them \$1. get gas & oil total  
\$5.77.

Take Erickson home and in @  
5-30 P.M.

Cline did not come today

Julius Nelson at Bank  
says the Peterson land is to be surveyed  
East 10 acres of the West 50. rods  
of Govt Lot 2. Sec 20-137-28

John W. Cuss



May 17<sup>th</sup> 1921 Tuesday

Cura and Car. Laks, Olson & Bob  
pick up Erickson and 10 I.M.S.  
@ Request. Start Olson digging holes  
@ So Corner N. 35-36-137-29 20 ft.  
@ C.C. Bet 2-3-136-29 where 03 holes say  
BP7833'E38' = 25.08 ft (Slocum Corner)  
" 9562'W 127 = 83.82 "

We find hill plump of SE line standing  
plainly marked from which we  
N 33°W 25:08 ft and set Hat  
Turned from road (line) looking south  
9°

We find SW line standing green well marked  
and from the line we set Hat by flat  
chain after which the SE line stands  
S 38°16'E and S 21°16'E

S 52°02'W Turned from graded road  
looking south road must be on line  
From

E & W Standard parallel cross  
12.60 feet south of C.C. Bet 2-3-136-29

Begin @ South on 35-36-137-29 chain  
West along line line:

@ 1549.30 W. interest out line C.C. Bet  
2-3-136-29

@ 2640 W. set limp 1/2 A side see 35

@ 2700 Hat 25300 hit S on 34-35

137-29 = 20 ft long

at on 34-35-137-29 there are 5 I.M.S. 137  
N 45°E 77 ft on each of corners  
The other three Wit Monuments bear N.W.  
SW - and SE 45°-45 ft distant Turned from  
road @ North

Correcting East  
at 2700 West we chain East 50. ft to



2650 W where we met Hal for line 1/4 on the  
side see 35-137-29. Old BTS gone  
5 IMS N45°E 45 ft also NW-SW-SE

At CC Bet 2 and 3. Slooums corner  
we met 5 IMS. N45°E 45 - N45°W 45 -  
S 45°W 77 & corner  
S 45°E 45

at Ar Cr bet 35-36-137-29  
5 IMS. N45°E 45 - others same

at 1/4 side 35-137-29  
5 IMS N45°E 45 ft all the others  
same

Olson and Eckerstrom finish  
setting IMS. while Bob & Curo go East  
and finish connecting over stakes  
and changing minut of angles

### Correcting

See Page 58-59-60-61-62 also  
" 79-80-85-86-

We correct all stakes and mark them  
"Trip Line - Road Center"

Just west of SECOR see 31-137-28  
our correction hits over top of a big hill and  
change our road line to run in full line

At a point on line 215 feet west  
of SECOR see 31-137-28 also  
S 78°30'W 418.70 Ft <sup>should be 221.5</sup>  
N 67°40'W 205. Ft 15' 1 1/4  
Thence west along line 15 (Harold's  
corrected Hah 6900 E.) a point  
504 E out of CC NW Cr see 6-



294

7136-128.

Thence N 59° W 203. H ✓

S 85° W 200 W

S 48° W 139 " To a point

26 ft East of C.C. N.W. Corner

6-126-28

all lake dinner with Solberg.

Note

S 78° 30' W 418.70

Sine 97992 X 418.70 = 410.29 W

Cor 19937 X 418.70 = 83.48 S

215.00 + 1

410.29

+16.5° = 15.8° further west chgd to 224.5

N 67° 40' W 205.00 =

Sine 92499 X 205.2 = 189.62 W

Corin 37999 X 205 = 77.90 N

189.62 W

15.38

225.00

N 59° W 203 =

Sine 85717 X 203 = 174.01 W

Corin 51504 X 203 = 104.55 N

174.01 W

S 85° W 200

Sine 99619 X 200 = 199.24 W

Corin 08716 X 200 = 17.43 S

199.24 W.

S 48° W 139

Sine 74314 X 139 = 103.30 W

Corin 66913 X 139 = 93.01 S

103.30 W

+ 26 W

26.00 W

226.46

15.50

210.96

13 17.46 W

+ 210.96

226.46

13 43.92 OK

John W Curo



96  
May 18-1921

Wed.

Town Board meet to pay up  
for work on 9<sup>th</sup> Standard Parallel



96

9th Std Parallel

Time Sept 8-46

March

April 1921

	31	1	2						
IP Botcher	$\frac{1}{2}$	1	1		@ \$12.				
OM Olson	$\frac{1}{2}$	1	1		@ \$4.				
Theo Erickson	$\frac{1}{2}$	1	1		@ \$4				
H.J. Johnson	$\frac{1}{2}$	1	1		@ \$4				
Johnson Team	$\frac{1}{2}$	1	1		@ \$1.				



# Board

March 1921 → April 1921

30 31 1 2

Theo ERICKSON

Batcock *paid* SL SL R R 4 @ 35 2 " 25

With Ira Johnstone

Batcock *paid* D  
 Olson *paid* D @ 35 ✓  
 Erickson *paid* D  
 Johnson *paid* D

With Nels Erinson

Batb D  
 Olson *paid* D @ 35 ✓  
 Erickson *paid* D  
 Johnson *paid* D



## Date of Petition

NE Cor of NW  $\frac{1}{4}$  Sec 2-136-29

Thru E on Town line bet Sebley &  
 Jenkins Ideal & Pelican 2  $\frac{3}{4}$  miles  
 and terminating @ SE Cor 32-137-  
 28

Mail Plat and report to Tazell



Gould	2.00
Mrs O. M. Olson	33.55
M. Joseph	11.20
Mrs Theo Erickson	11.10
Olo Hornum	32.00
Alfred Clins	46.00
Theo Erickson	82.00
Oscar M. Olson	84.00
J. W. Curo	97.50
H. J. C	108.00
P. P. Salberg	9.10
J. P. Bab	90.00
Nels Erickson	4.90
Lea Johnston	1.40
H. J. Johnson	25.30

4 638.25  
 159.56 1/2

80. Fms ? @ 81.65  
 102.50  
 2.46  
 20.00  
 137.26



May 19-1921

Thursday - as the Sibley Board met yesterday and paid all bills including my board up to after breakfast this morning and for Babcock also and also for my board while on co work. May 11 - T. 19-1921 since all I have to charge now is for myself and car 6 days to be paid by Cam. Univ. Co.

Except: that no one has been paid for what we have done in Jan 26-

136.29 shown on Page 52-53 this book with the bal of work and time in small field book. I pay O. M. Olson.

Ch \$ 20. in full board for Alma and Reed and go to Beauregard & is Peguot.

Promise to send Quincy Petition to T. H. Lindquist Peguot. See 26-136-29



Aug 2-1921

101

Thursday

HJ.

Johnson comes over @ 6-30 before  
I am up - comes from Piquet on  
milk train to get surveyor's report of road  
on 9<sup>th</sup> standard parallel

Brings original petition reads viz

Whitten on a & Blank Co Road Pet -

Town - Sibley - establish  
running on Town line of Sibley - Jenkins  
Ideal - Pelican

Beg @ NE cor of NW  $\frac{1}{4}$  Sec 2-136-29

East on town line bet Sibley  
Sibley - Jenkins Ideal Pelican 2  $\frac{3}{4}$  miles

Terminates at SE cor Sec 32-137-28

Piquet

February --- 1920

Johnson stays all day and till  
midnight train waiting for me to get  
out surveyor's report

I get me done for him to take home  
work till 11 o'clock at night

See Twp Road Record

Aug 3-1921 I finish the  
copies for Sibley Jenkins Ideal Pelican  
and mail the last three to Johnson

Johnson  
over



102

Aug 3-1921 contd.

## Scrap sheet

- 1 =  $\frac{1}{4}$  Cor N side Sec 2-136-29  
 1 East 1591.95 ft T. to 2 =  $\frac{1}{4}$  S side 36-137-29.  
 2 N 70° 07' E 89.80 T. to 3.  
 3 N 42° 14' E 231.25 " 4  
 4 N 63° 28' E 115.10 " 5  
 5 S 71° 45' E 539.50 " 6  
 6 N 69° 14' E 165.63 " 7  
 7 N 67° 07' E 248.90 " 8  
 8 N 71° 30' E 123.65 " 9  
 9 S 80° 18' E 48.10 " 10  
 10 S 49° 59' E 144.70 " 11  
 11 S 55° 24' E 293.50 " 12  
 12 Being Pt on line 1760.30 ft E 1  
 $\frac{1}{4}$  Cor N side 36-137-29  
 12 East 888.04 ft T. to 13.  
 13 being AEC on line 137-29  
 13 East 2645.14 T. to 14  
 14 being  $\frac{1}{4}$  Cor N side Sec 31-137-28  
 14 East 1101.82 ft T. to 15  
 15 = NW Cor T 136-R 29  
 15 East 26 ft T. to 16 = Pt 26 ft E 1  
 NW Cor T 136 R 28  
 16 N 48° E 139. ft T 17  
 17 N 85° E 200 " " 18  
 18 S 59° E 203. " " S 16 19  
 19 East 211. " " " 20  
 20 = Pt on line 841. W of SEC on Sec 31-137-28  
 20. S 67° 40' E 221.5 T. to S 16 21  
 21 N 78° 30' E 418.7 " " 22 on T. line  
 22 East 215. " " 23  
 23 = SW Cor 32-137-28  
 23 East 2582.09 ft T. S 16 24 =  $\frac{1}{4}$  S. side 32-137-28  
 24 East 1181.69 T. to S 16 25 = NW Cor 5-136-29  
 25 " 1100.40 " " 26. Iron with m n  
 W bank of lake 300 ft W of SEC on 32-137-28  
 26 East 300 ft T. to S 16 27 in shallow lake  
 @ SW Cor 33-137-28.

John W. Carr  
Aug 3-1921



Ryan -

103



<del>43</del>	<del>47</del>
<del>258</del>	<del>102</del>
<del>238</del>	<del>102</del>
<del>2838</del>	

VH lot 23-26.

B.P. 7573W43 = 29.38 ft

" " 6N29W17 = 11.22 ft

Wm Fish



10	3280	34	
96	1968.0	24	5
96	12080	24	20
1056	1164.8	30	30.4
	1320	180	84
	2484.80	760	24

22-23-26-27

B.P. 10 N 46 W 34 = 22.44 //

" " 12 S 56 W 5 = 3.30 //

" " 12 S 64 E 14 = 9.24 //

" " 10 N 68 E 30 = 19.80 //

$\frac{1}{4}$  South side of 26 in lake

$\frac{1}{4}$  bet 26-25

Tami 6 N 65 E 16 = 10.56 //

" 8 S 38 W 6 = 3.96 //

$\frac{1}{4}$  bet 26-27

B.P. 8 S 28 W 136 = 89.76 //

" " 7 N 16 E 114 = 75.24 //

136	114	118	125
816	684	708	750
816	684	708	750
8976	7524	708	750
		330	8200
		30	



17100	<del>18480</del>	<del>623</del>
<del>13200</del>	<del>5280</del>	<del>51300</del>
<del>3900</del>	<del>13200</del>	<del>37380</del>
<del>18480</del>	<del>1790</del>	<del>441180</del>
<del>1320</del>	<del>7</del>	<del>7420</del>
<del>17160</del>	<del>44550</del>	<del>45000</del>
	<del>490000</del>	

~~152~~

~~95800~~ ~~NE 85~~  
~~16170~~ ~~NW 50~~

~~15600~~ ~~15840~~ ~~150~~ ~~16200~~ ~~16500~~

<del>7100</del>	<del>N 65</del>	<del>18480</del>
<del>17900</del>	<del>N 45</del>	<del>17900</del>
		<del>500</del>

Dec 25-26-35-36-136-29

B. Pine 12 N 69 E 55 = 36.30 ft

" " 12 S 29 E

" " 10 S 1 W 118 = 77.88 ft

Apr 6 N 77 W 125 = 82.50 ft

23-24-25-26

B.P. 6 S 82 E 129 = 85.14 ft

" " 6 N 82 E 90 = 59.40 ft (N.P. 20)

26-27-34-35

B.P. 7 S 76 W 3 = 1.98 ft

" " 8 N 50 W 20 = 13.20 ft

" " 10 S 21 E 76 = 50.16 ft

N.P. 12 N 58 E 38 = 25.08 ft

20  
20  
20

129  
444  
714  
851

1320

76  
450  
450

9/10



~~79.467.00~~

~~8.550~~

~~15.845~~

~~45.66~~

~~25.90~~

~~12.500~~

~~40.840~~

~~184.80~~

~~118.80~~

~~25.20~~

~~17.00~~

~~6.0480~~

~~1.581.84 W. spike~~

@ 525.84 E. spike for hub

@ 915.14 W. spike for SE & NW

@ 1045.30 E wire for 2 arms. 200

25 ft. 5 ft. 10 ft. 20 ft. E. E

@ 1373.20 spike for hub

@ 2352.80 since N. 65.2 wire 4 ft. 10 ft. 20 ft.

1352.00 spike

Alfred Cline

~~55.99.5 spike 56.25 road~~

NWSE 0.360 ft.

~~8400 E side of plant approx~~

~~8638.5 center road~~

~~6.13.70 Hub~~

~~69.75-75-77 spikes~~

M & Joseph Joseph

@ 145.00 spike

@ 190.90 about 100 ft. 100 ft.

@ 123.00 8 ft. 130.72 ft.

NWSE @ 12.1 ft.

~~127.92.40 to 10 ft.~~