

136-27

144



No. 1203

136-27 Mission Twp

Index

Board Sheet 18-19-35-53-

Time Sheet 6-7-34-52

Cooley 80

(2)

136-27
Mission

Oct 17th 1920 Sunday

Hunt partridges all day.

Alma - Reed - Gerald - Iners - Ito
and baby drive South - eat lunch
near house of Mrs Adams

136-27
Mission Trip

(3)

Oct 18-1920. Monday

Working for Mission Trip

J P Babcock in one crew - @ \$1⁵⁰
an hour and expenses

John W Curo @ \$1⁵⁰ an hour
& expenses Except that I
have to "finish up previous work"
@ \$5. a day and exp.

Bab. Copy field notes for new survey
in a.m. 3 Hours - 1 Hour coming
P.M. @ 8¹⁵

Curo and Babcock drive to
Sec 31-136-28. Meet E.P. Clements
a "Judge" also Lawyer of Ord
Nebraska who owns Lot 9. I start
him a line West @ 8°30' W and N @ 8°30'
compon. Then to Ed Young's farm
Curo shipping I.P.S. 1/2 day
John W Curo

4

136-27

Minion

Oct 19-1970 Tuesday

Met Mrs Smith @ cor 19-20-29-30
where she says Van Horn cut down
all US BTS and burned his house

Babcock turns 1°40' R. from my old
picket line and run
Southern 2nd random bet 29-30.
He and Van Horn work together

Ed Young and his Ford then takes
me to "Red" Kimball's where we pick
him up and we drive to farm

Harry Clark who takes us to cor of
sec 13-14-23-24-136-27

set cor from old NW and SW BTS
plains picket. set tall 2x2 pole for
cor new BTS sig

US Nalis call for

NP18N74°W 316 = 208.56 OK

NP11S63°30'W 217 = 143.22 OK

BP16S57°30'E 347 = 229.02 good

We find NW and SW stumps plainly
marked set 2x2 tall pole for cor in
marsh old BTS stumps

N 72°30'W - 208.56

S 57°30'W - 143.22 Confront @ 10°30' d

new BTS sig 10°30' d

Dry slab 9° N 34°30'E 91.55

JP 8° S 50°45'E 131.9

John H. Cunn

136-27
 Minion Coult
 Oct 19-1920

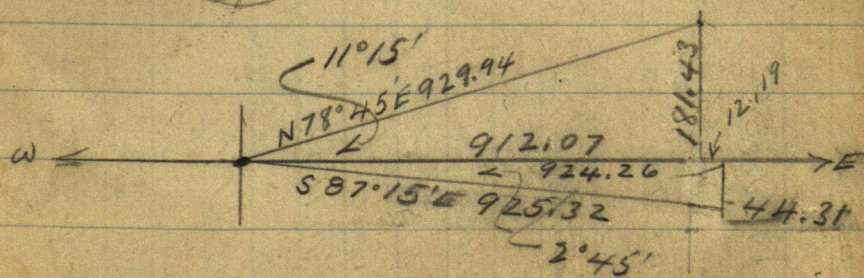
start picket line West bet
 14 and 23 and in
 P.M.

leave Bert Clark to cut picket
 line. We then drive in 2. Cor.
 to Cor 14-15-22-23-136-27
 US rules call for

W. Oak 14587°15'E 1402 Lks = 925.324
 " " 10 N 78°45'E 1409 " 929.944
 VP 20 N 1°W 820 (gone) 541.20

We find one of the oak stumps plainly
 marked B.T.
 also an old stake in meadow
 stake appears to be 50 or 100 ft or far
 south in meadow.

stump must be the "SE" - B.T.



2°45' = .04789 + 925.32 = 44.315
 .99885 + 924.26 E
 could P. 8.

Oct 1920

Oct 1920

[illegible]

$$\begin{array}{r} 198 \\ 11 \\ \hline 187 \\ 25 \\ \hline 162 \end{array}$$

$$\begin{array}{r} 27 \\ 5 \\ \hline 135 \\ 18 \\ \hline 157 \\ 91 \\ \hline 1 \end{array}$$

7

8

Oct 19-1920
 Minion
 136-27

11.15'

sin $.19509 + 929.94 = 181.43$ N

cor $.98079 + 929.94 = 912.07$ E

We also find Cem Mon set by
 Co Surveyor Ingram at following
 places

$5\frac{1}{16}$ Cor Bet sec 14 and 15 and
 $\frac{1}{4}$ cor

Cem Mon @ cor 15 10-11-14-15-136-27
 where US Nalis call for vis

US Nalis 10-11-14-15-136-27

We find a cem post set by Ingram

136-27 Union

9

Oct 19-1920 cont'd

Bobcock and Van Horn

Beg @ my camp Cor 15 19-20-29-30

South random line bet 29-30

8'45'E

300-600-900-1200 slabs.

1320 Hub Temp $\frac{1}{16}$

1462 Hub about 4 ft 20 of E-W fence

1500-1800-2100- slabs

2301. Hub 2400- slabs

2640 Hub Temp $\frac{1}{4}$ bet 29-30 (gone)

2700-

2895. South Hub

Quit for night

Bobcock takes dinner with Van Horn
Curo- Kimball - young dinner with
Clarke.

John W Curo

10.

5173.3
 124.2
 52675

Oct 20-1920

J P Balcock π . @ 8150 owned by
 Harry Clark and Bert Clark.
 Continue

Louth bet 29-30

© 2934 old road N E S W

3500-3600-3900 slake

3972. Hub

4200-4500-4800 slake

4851.10 Hub

5100-5262 Hub not on line

about at crossing of Harold's old line

5400-5700-6000- slake

6000.30 Hub

6300-6600-6900-7200-7500

6600 8150

6900

7200

8100

8400

8700

9000

9300

9600

9900

10200 slake

Omit for night

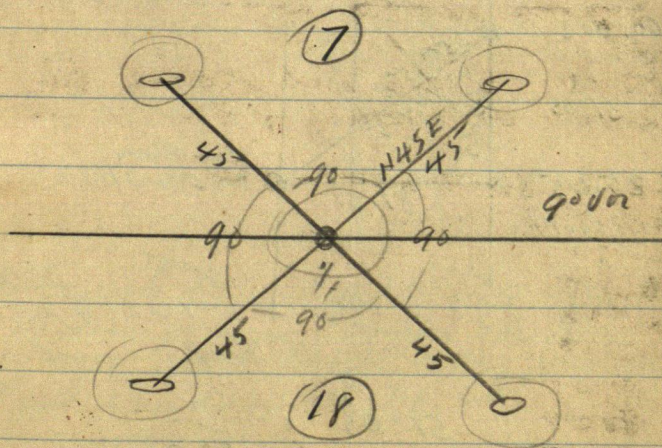
'Bill' Gibson came at noon and
 worked

Van Horn went in morning to
 Merrifield got I M S- and back
 to cut bank at 3-p.m.

17

1/4 bet 7-18-136-27. pull up
Ingram's cam man and put in its
place a 2X2X 48" Round Cap
std US man in 6 ft circle for tree
1/4 cor set in 16" mound mtd

'/4- - - 7-18 from which
see below



12

136-27

Mission

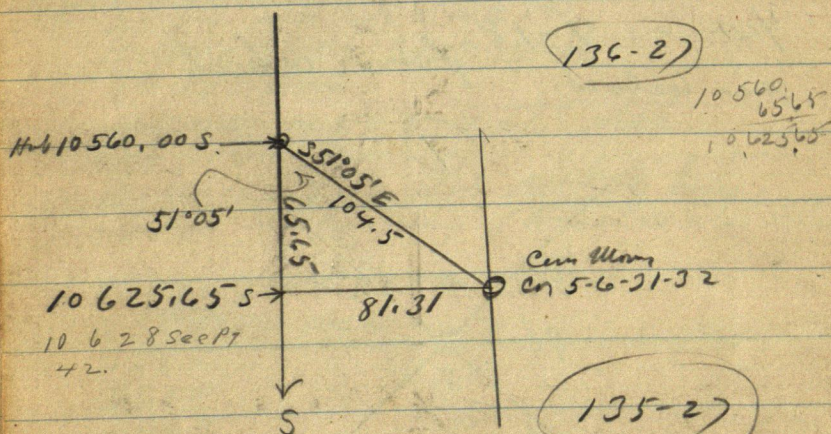
Oct 21-1920 Thursday

Babcock-Clarkson- Gibson and
Van Horn continue South

South bet 31-32

@ 10500 - alt

10560.00 Huh

Cn to 5-6-31-32 - bears S $51^{\circ}05'E$
104.5 ft.

$$\begin{aligned} \text{Sine } & .77806 \times 104.5 = 81.31 \text{ E} \\ \text{Cos } & .62819 \times 104.5 = 65.65 \text{ S} \end{aligned}$$

At 10.625.65 South Cn set s
E on 81.31 ft.

$$\text{off. } .007652 = 0.27'$$

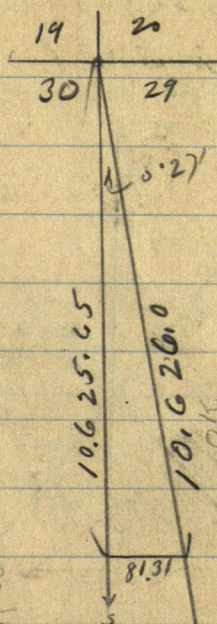
$$\begin{array}{r} 10628.131 \\ - 65.65 \\ \hline 10625.65 \\ - 10625.65 \\ \hline 0.007652 \\ \times 77 \\ \hline 6870 \\ - 7434 \\ \hline \end{array}$$

Oct 21-1920

106250
10624.7
3.

10560
6565
10625.65 10.625.65

10625.
99997
74373
95625
95625
95625
95625
10624.68125



0°27'
Sine .00785
Corr .99997

11
10625) 99997
110.62535
45
99997) 106250.600
99997
625300
599982
253180
199994
531860
499985
318750
299991
18759

Babcock crew got there @ 9-30 AM
lets Gibson go home. Taker Van Horn
goes home with Clark & Tom and run
West random bet 14-23
Van reads 90E

@ 350-600-900-1200-1500-

1800-2100-2400-2700-3000-

3300 stops Rained in PM. lost

2 Hour in PM.

Curo-Young-Kimball put in car to
5-6-7-8- 136-27 VERW and BT.
stamps and BT stamps bear

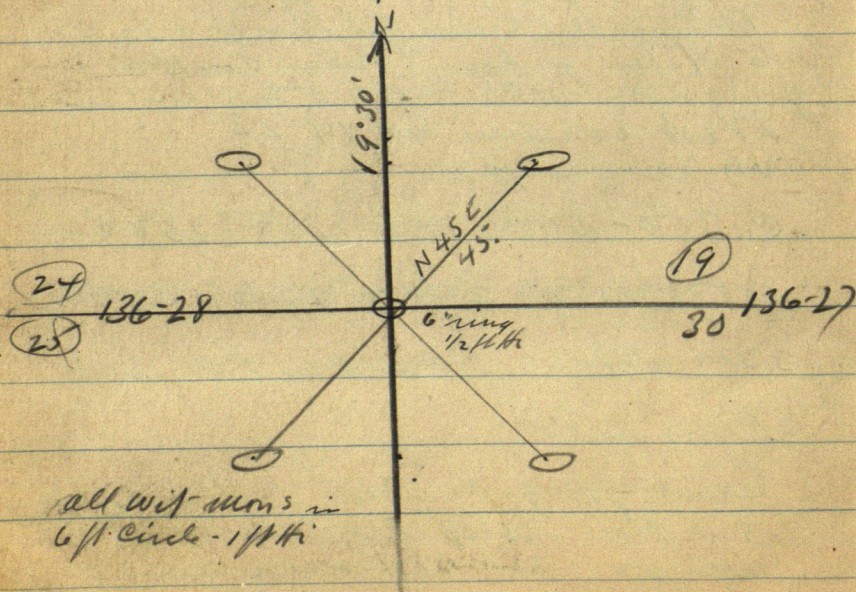
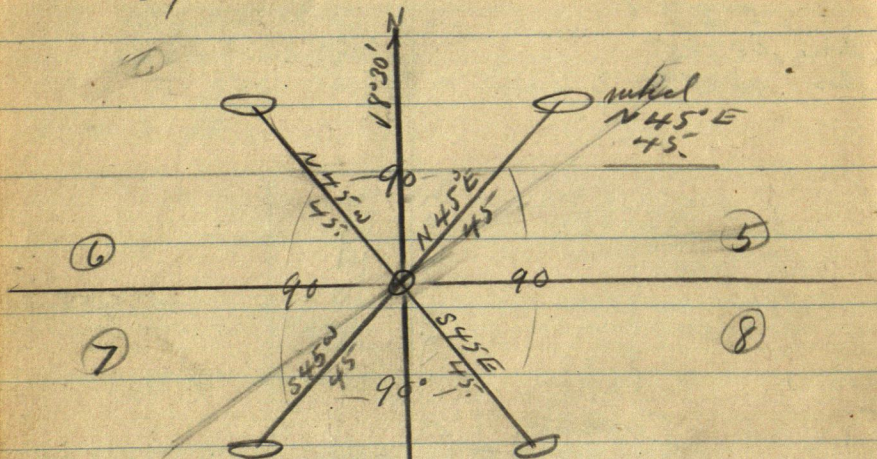
14

Oct 21-1920 cont'd

136-27 Mission

N 51° E and N 39° W and 4 x 4
 x 36" stake set by Ingram bears N 60° E
 3.6 ft @ 8° 30' D

Put in 5 standard US-IMS.
 in 6 ft circular mound 12" Hi.



all wit. mms in
 6 ft circle - 1 ft Hi.

Oct 21-1920

15-

Babcock and Van Horn late dinner
and over night with Clark

John W. Cus

Oct 22-1920 Fri
 Babcock crew continue
 West bet 14-23-136-27

3600	3900	slake
3960 Hub	4200-	
4269.4 Hub	4500-4800-	

5100-5400-

5503.3 old slake cr?

14-15-22-23-136-27?

Leon north 3.2 ft

Note: We must have dropped on
 Chem Babcock
 Rain in P.M.

Cisco-Young-Kimball
 set preliminary Hub for Surr @
 MC West and MC East and
 1/4 bet 18 and 19. all
 all at 45° to meridian and
 45.0 ft out

Go home to Brainerd in P.M.

Sat Oct 23- 1920

Bob Curo in Brainerd

Oct 24- 1920 Sunday

Babcock and Curo in
Brainerd

Board Sheet

Oct 1920

SUN
17

18

19

20

21

22

23

SUN
24

25

26

27

28

29

30

With

E L Young

J W Curo

J P Babcock

Harry Clark

Best Clark

Kod Kimball

With Van Horn

J P Babcock

48 miles
@ 500

16 Beds
@ 300

0

0

0

0

0

0

0

0

0

0

0

0

0

0

0

0

0

DB

DB

DB

DB

DB

DB

DB

DB

DB

DB

DB

DB

DB

DB

DB

DB

DB

SL

SL

SL

SL

SL

SL

SL

SL

SL

SL

SL

SL

SL

SL

SL

SL

SL

DB

DB

DB

DB

DB

DB

DB

DB

DB

DB

DB

DB

DB

DB

DB

DB

DB

SL

SL

SL

SL

SL

SL

SL

SL

SL

SL

SL

SL

SL

SL

SL

SL

SL

DB

DB

DB

DB

DB

DB

DB

DB

DB

DB

DB

DB

DB

DB

DB

DB

DB

SL

SL

SL

SL

SL

SL

SL

SL

SL

SL

SL

SL

SL

SL

SL

SL

SL

DB

DB

DB

DB

DB

DB

DB

DB

DB

DB

DB

DB

DB

DB

DB

DB

DB

SL

SL

SL

SL

SL

SL

SL

SL

SL

SL

SL

SL

SL

SL

SL

SL

SL

DB

DB

DB

DB

DB

DB

DB

DB

DB

DB

DB

DB

DB

DB

DB

DB

DB

Oct 25-1920

Curo and Babcock to Bed
at Ed Youngs for dinner
P.M.

Curo - Bab found and his car
go to car 11-12-13+14-136-27

US Notes call for

NP13N 35°34'E 70	=	46.2
NP14S 62E 50	=	33.0
NP13N 59W 33	=	21.78
NP16S 63°12'W 32	=	21.12

We find all four dumpt. OK for course
short. 0.30 of a foot NE + SW
Long 0.50 SE - NW

set 2x12" Bricks Hub by
proportion New BTS 10° on

JP7N 73°E 12.28

Oak 4N 26W 16.7

JP10S 45W 29.5

Oak 4S 6'E 12.75

Wilt Nalis till 11-2 P.M.

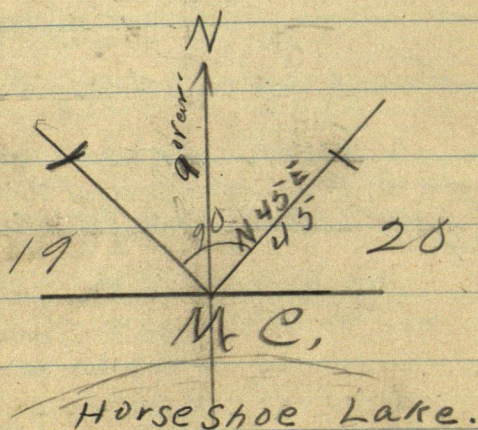
4 Hours in field 3 hours and more on
note call at 7 Hours

Bob help 7 Hours

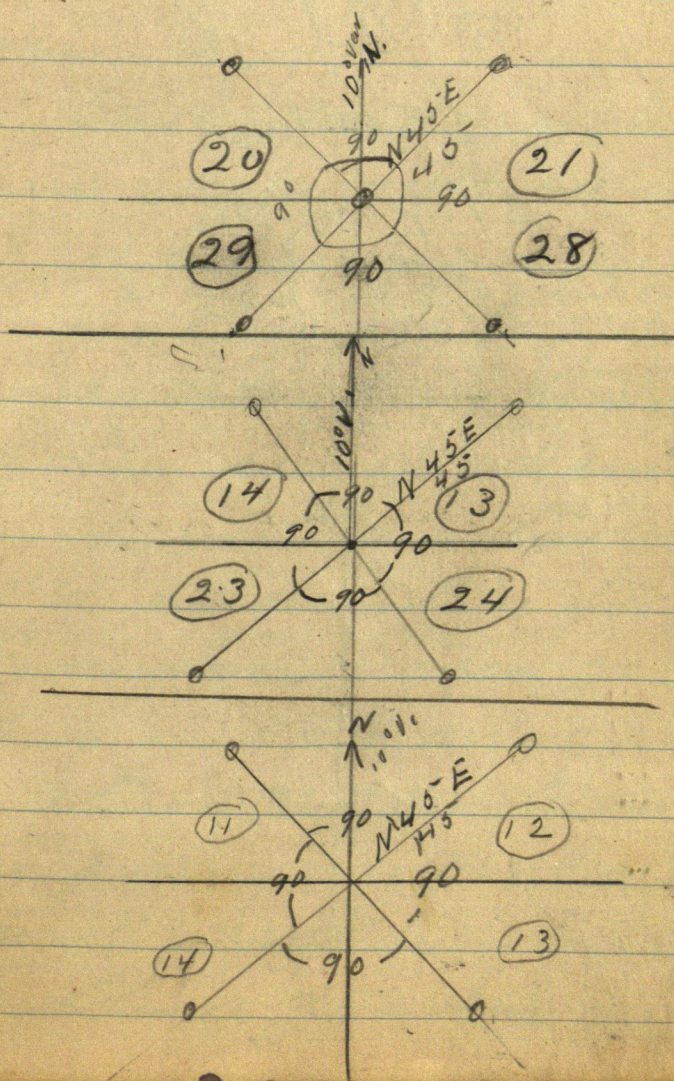
Oct 26 1920

Starting at the SE cor
of sec 14 I run North @ 10°
var. cut line all forenoon
Then in afternoon go to
Sec line bet sec 23 & 24 and
run North from
the end of local out-road to see
if it will hit the cor to sec 13, 14,
23 & 24.

Oct. 27, 1920
Set cor.



Oct. 27, 1920



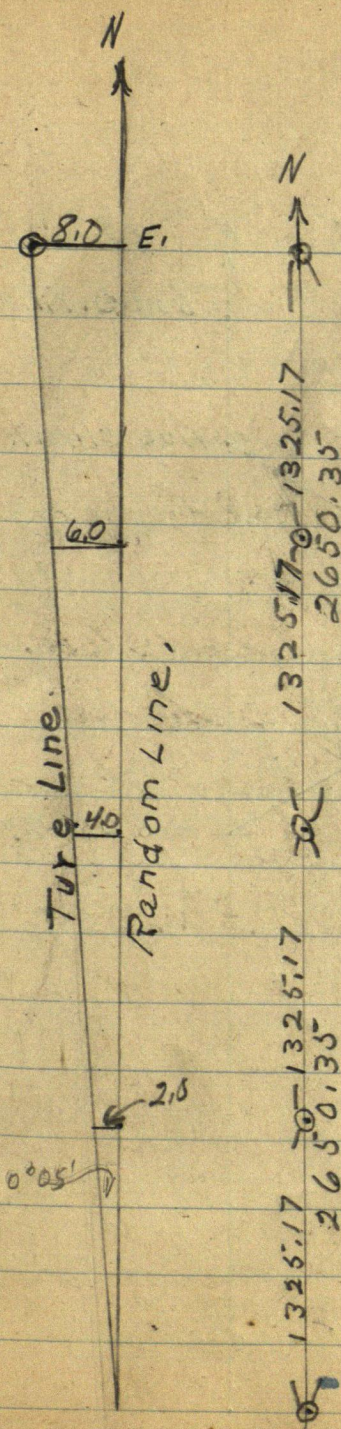
Oct 28, 1920. Thursday

Best Clark cuts line N-
or sec 23 & 24 from laid out
road. —

Clark, Van Horne, & I cut
and chain North bet sec
13 & 14 @ 300, 900, 1200, 1500,
1800, 2100, 2400, 2520 hub on line
2654 old road SE & NW. 2700, 3300,
3600, 3900, 4200, 4509.7 sub.
edge of Bank of pond, send flag
to other side of pond and put
in hub. then turn N
60°W and run line for
triangulation then go to
hub on North side of pond
and turn S 60°W intersect
line running N 60°W at a
point 631.0 ft from hub 4509.
7 thence go to hub on

Oct 28, 1920 Cont
North side of sand and back-
sight on line and con-
tinue line North to corner.
N. 5300.7 to cor & 8 ft East of
corner.

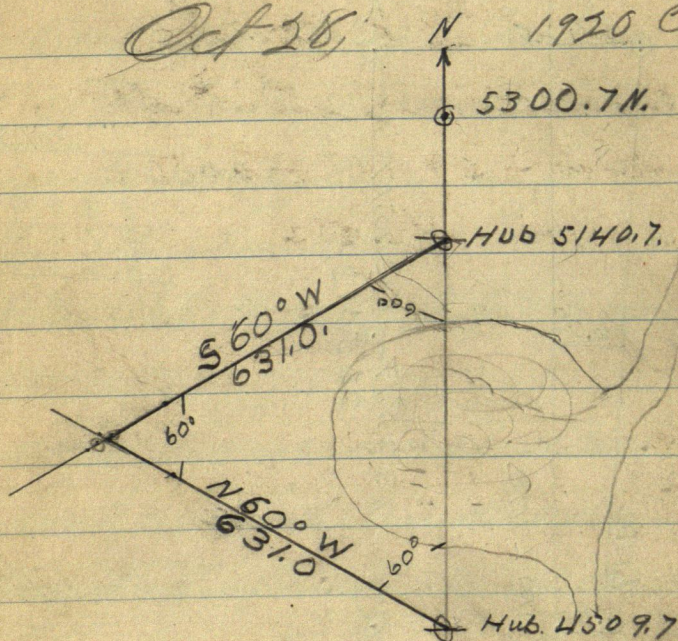
The line that Bert
Clark worked on he run
picket line and missed
the cor to sec 13, 14, 23,
& 24 about 2 ft East.



$$\begin{array}{r}
 100/51 \\
 5300 \overline{) 8.0000} \\
 \underline{5300} \\
 27000 \\
 \underline{26500} \\
 5000
 \end{array}$$

28

Oct 28, 1920 Contd



Oct 28 contd.

Correction of line bet 13 & 14.

$$= 8.0 \text{ ft} \div 5360.7 = .00151$$

$$300 \text{ N gals W} \times .00151 =$$

$$600 \text{ N } " " " " =$$

$$900 \text{ N } " " " " =$$

$$1200 \text{ N } " " " " = 2.00$$

$$1500 \text{ N } " " " " =$$

$$1800 \text{ N } " " " " =$$

$$2100 \text{ N } " " " " =$$

$$2400 \text{ N } " " " " =$$

$$2520 \text{ N } " " " " =$$

$$2650.35 \text{ N } " " " " = 4.00$$

$$2700 \text{ N } " " " " =$$

$$3000 " " " " =$$

$$3300 " " " " =$$

$$3600 " " " " =$$

$$3900 " " " " =$$

$$3975.52 " " " " = 6.00$$

$$4200 " " " " =$$

$$4509.7 " " " " =$$

$$5140.7 " " " " =$$

$$5360.7 " " " " = 8.00$$

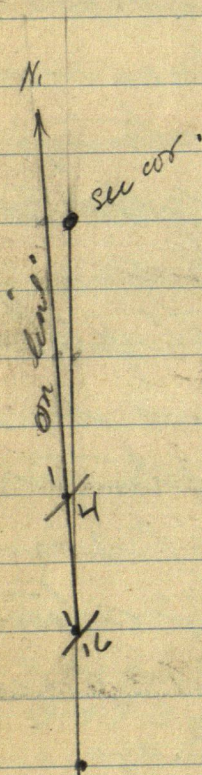
Oct 29, 1920

Starting at the cor
to sec 10, 11, 14 & 15 I chain south
to the South $\frac{1}{4}$ cor as I have
the measurement from the
cor to sec 14, 15, 22, 23 to the
South $\frac{1}{4}$ which is 326.0 ft
from the North West-cor of sec
14 South 300, 600, 900,
1200, 1500, 1800, 2100, 2400
2650.45, 2700, 3000, 3300,
3600, 3900, 3971.3 to South $\frac{1}{4}$
cor. $3971.3 + 326.0 = 5297.3$ ft
I line up the South $\frac{1}{4}$ and also
the $\frac{1}{4}$ and then look to cor
to sec 14 & 15 and I miss
this cor so it shows that
the line bet sec 14 & 15 is not
on a straight line.

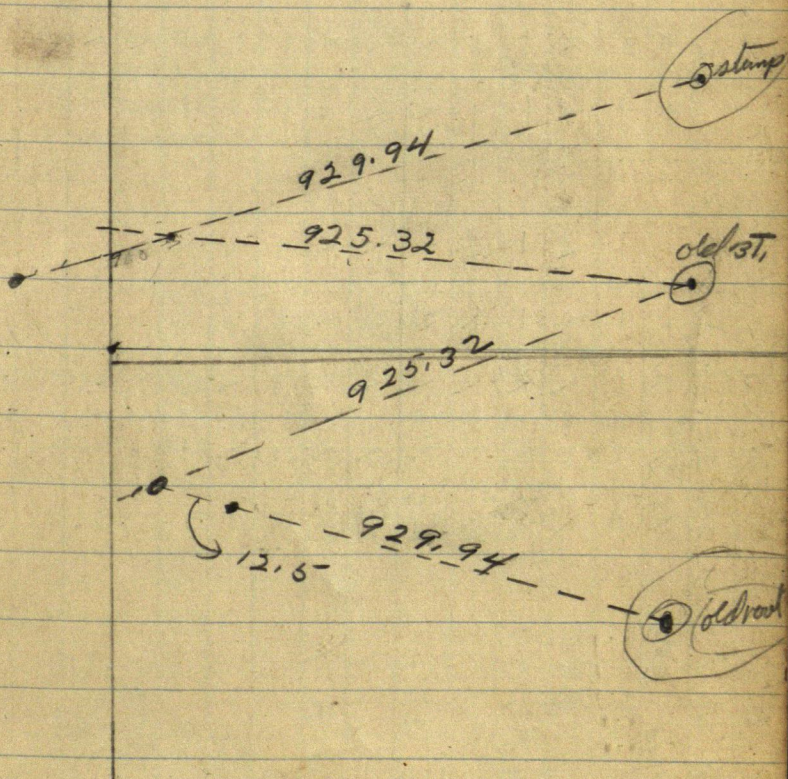
Oct 29, 1920

I also try to locate the South west cor of sec 14 but do not find one stump and by turning it for the S.E. stump it throws me about 50 ft North of the cor as it now stands and by using it for the N.E. stump it puts me about 40 ft south I find two other stumps but they do not check for measurement.

Oct 29, 1920



Oct 29, 1920.



From Pg 6	B	Time Sheet Mission										SUM		
Nov 1920	4.5	25	26	27	SUN 28	29	30	OK	1	2	3	4	5	6
John McCus	@85	1 1/2	1 1/2	1	1	1	1	1	1	1	1	1	1	1
Auto		1 1/2	1 1/2	1	1	1	1	1	1	1	1	1	1	1
IP Babcock	@5	1 1/2	1 1/2	1	1	1	1	1	1	1	1	1	1	1
Harry Clark		1 1/2	1 1/2	1	1	1	1	1	1	1	1	1	1	1
Auto		1 1/2	1 1/2	1	1	1	1	1	1	1	1	1	1	1
Ed Young	1	1	1	1	1	1	1	1	1	1	1	1	1	1
Auto	1	1	1	1	1	1	1	1	1	1	1	1	1	1
Red Kimball	1	1	1	1	1	1	1	1	1	1	1	1	1	1
Lyle Clark		1 1/2	1 1/2	1	1	1	1	1	1	1	1	1	1	1
Albert Clark		1	1	1	1	1	1	1	1	1	1	1	1	1
Carl Clark		1	1	1	1	1	1	1	1	1	1	1	1	1
John McCus	@85	1 1/2	1 1/2	1	1	1	1	1	1	1	1	1	1	1
IP Babcock	@150	1 1/2	1 1/2	1	1	1	1	1	1	1	1	1	1	1

Cont'd T. Pg 52.

Board Meeting

No	1920	4	5	26	27	28	29	30	Dec	1	2	3	4	SUN
With Mrs Young														
John W Curo				D	D	B	B			S L	O B	R	B	SUN
Gerald C.				S L	S L	S L					S L	S L	S	SUN
AP Babcock				D	S L	S L								
Ed Kimball				D	D	B	B	S L		D	D	B	B	
Harry Clark				S L	S L	S L				S L	S L	S L	S L	
Lytle Clark				D						D				

With Mrs Clark														
Curo				D										
Gerald				D										
Babcock				D	D	B	B	B						
Kimball				S L	S L	S L								
Young				D	D	D	S L	D						

(20)

(8)

10 weeks
13 0 1

Nov 26-1920 Friday

Batcock and I to Beannet in my
Baby Gravel and we arrive for dinner
with Ed Young.

The Town Board are holding a
meeting at Youngs
P.M.

We all drive to 1-2-35-36 T 135-136
R27 set 5 I.M.S but do not have anchor
rods just dig hole "N 45° E 45"

Nov 27 - 1920 Sat

Cues - Kimball and Young - Lake Jms.
to Town line in Youngs can
then to Brainerd - meet Ryan - Judge
McClellan and Co. attorney.
Dinner with Mrs Cues

Batcock - Harry and Bert Clark
set I.M.S. "N 45° E 45' P.C." at
1-2-35-36- (Set 5)
also W 1/4 (set 5)

Nov 28-1920 Sunday

Cris-Young-Kimball in one
crew Butcock-Harry Clark

Bert Clark is another crew

Set I 195. V. 3

MCE side Mission Lake (3. I 195)

Set 3-34 partly put in 5 I 195 at

en 2-3-34-35 + 136-137-27

We locate 14 but 3 and 34-

2-35- same trap

Nov 29-1920 Monday

Curs - takes Gerald and Melvin
young to Brainerd

Ed Young takes Rod Kimball
to 1/4 bet 2-35 then goes with
Brook

Babcock - Carl and Bert Clark take
Clarks car and put in 1/4 Bet

2-35 (5 FMS) also on 2-3-34-35

(5 FMS) and partly into 1/4 bet 3 and
34. Kimball helps them and they
all go to Clarks for our note

Nov 30-1920 Tuesday

Babcock works with Babcock and
crew Rod Kimball - Albert and
Carl Clark work

Harry Clark takes the boys to work
then goes to Little Falls

Cisco in Beamed

Bab puts in $\frac{1}{4}$ Put 3-34- (5 IMS)

T 135-136-27 "N 45 E 45 ft"
all

West $\frac{1}{16}$ (5 IMS) also $\frac{1}{4}$ (5 IMS)

also M.C. (3 IMS) West side Main Run

See 26-35-7 136-27 "N 45 E 45 ft"

Dec 1-1920 Wed

Cisco comes from Brainerd at 4 P.M.

Bab crew put in 1/4 hr 30-31-136-27
5 FMS (V45E45 re) also

On 25-30-31-36 T 136-R27-28

5 FMS. (V45E45 re)

Young-Kimball work with Bab

" cor

Dec 2-1920 Thursday

Kimball and Young finish one run
Car 25-30-31-36 & 136-27-28-Cucco and Babcock check chain the
2 miles bet 29-30 and 31-32

Chaining from Trip or South

Find .75 too long in first half mile,

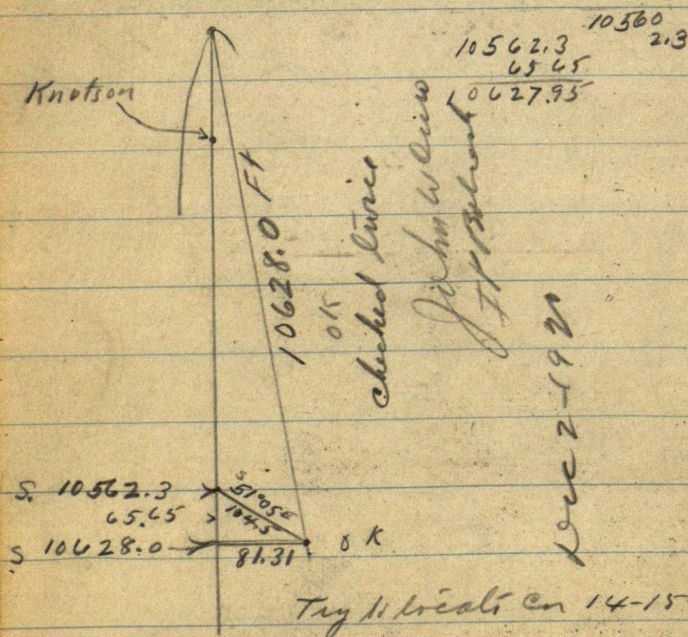
" .40 " " 2nd " "

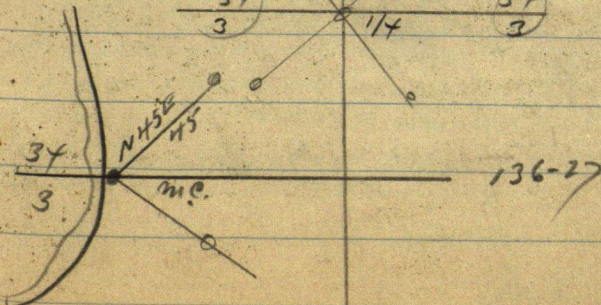
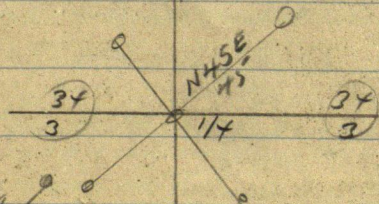
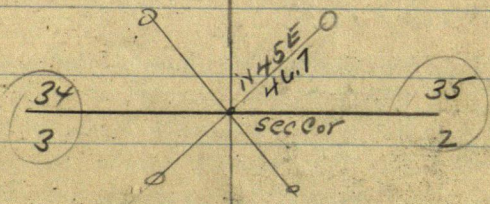
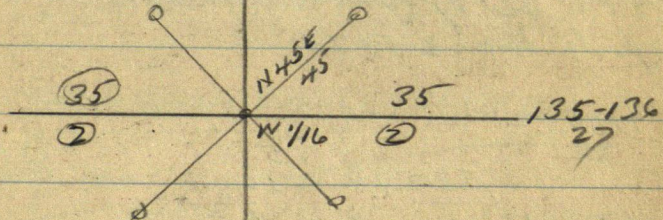
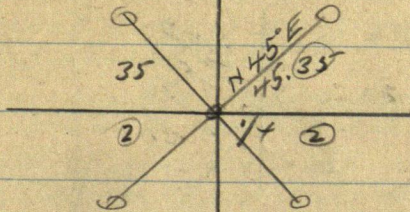
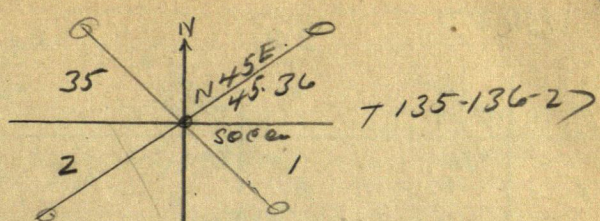
" .75 " " 3rd " "

" .40 " " 4th " "

230 ft longer than Bab & Van

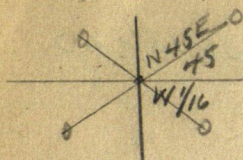
Horn in the 2 miles = 1.15 in each mile



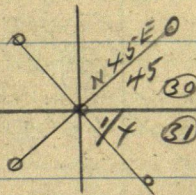
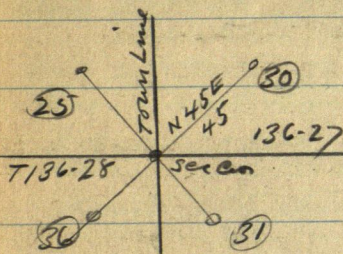
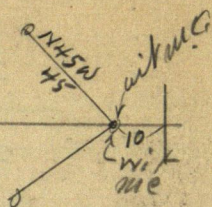
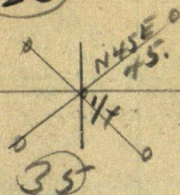


49

136-27



(26)



Abundant set by Babcock & crew
up to Dec 2-1920.

4) 5502.1 L 1375.5
4) 5502.1 5502.0
15 30
1327.8 4 22
4) 53112 4 21
13 53112
11 31
32.13 25.2
4) 5300.8
13 10
20
8

T136-27 Mission

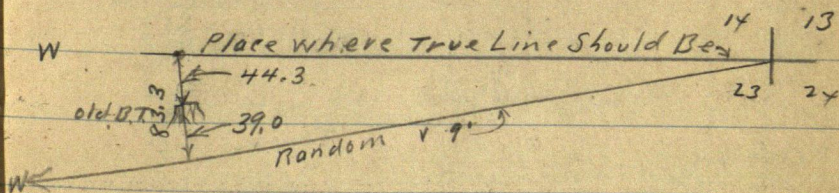
Dec 3-1920 Fri

Ed Young & Can. King Kimball - Curo and
Balbock loc of 14-15-22-23.

Then goes for Clark

Curo-Kimball and Balb. bring up random
from Erit @ 45718 West of fatal
SE BT lies North 39.It and stake on camp line 44.31 W of stump
lies 83.3 It North

We find the old stump of the SE line



Harry and Clyde Clark come and we walk
a mile South to loc 22-23-26-27 - where we
find all 4 old stumps all check perfect for
course and dist except SW.BT which is .50 of a
foot too far away all OK for course. We
ignore dist. will set marker hub for lines corner
set 4 hubs NW-NE-SW-SE - 45 ft away
@ 10° over and run on 10° 15' over run

North: @ 75. cut green spruce and Balsam
sawp. 300-600 stakes on line 900 stks 2° sawp
1062.5 that 1200 stakes on line 1370 that 1500
stks on line all take dinner with Clark
Bob Curo Kimball over mile with young
warm - no snow - lakes frozen.

John W Curo.

46

4900.00
435.2
 5325.2

Dec 4-1920
 Saturday
 136-2)

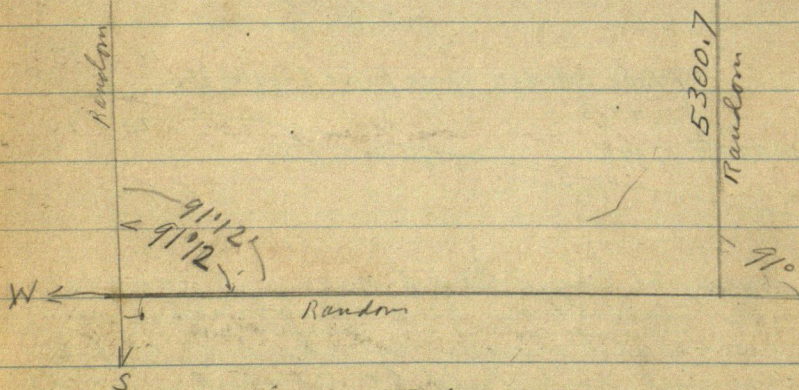
14°25'

$$24897 \times 439 = 109.3$$

$$96851 \times 439 = 425.2$$

96851	24897
<u>439</u>	<u>439</u>
871.659	224073
290553	74691
387404	99588
<u>42517589</u>	<u>10929783</u>

5326.00



4250.0
735

1658.6 Hdb
 1825 rwp

4124.3 Hdb in field

2215 LV

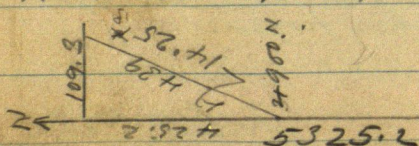
2640 Hdb 2685.7 rwp

3960 Hdb 712 x 15 Hdb in field

4800 rwp 4900 Hdb 100' from rwp

From 4900 North old stake line

N 14°25'E 438.9



Mission

47

Dec 4-1920

Saturday

$$\begin{array}{r} 5311.2 \\ 5297.2 \\ \hline 2651.45 \\ 14.0 \\ \hline 2300.90 \end{array}$$

$$\begin{array}{r} 5297.3 \\ 3971.3 \\ \hline 1326.0 \end{array}$$

$$\begin{array}{r} 5297.3 \\ 14 \\ \hline 5311.2 \end{array}$$

$$\begin{array}{r} 5297.85 \\ 5325.2 \\ \hline 2106.22.5 \\ 5311.2 \end{array}$$

$$\begin{array}{r} 5508.3 \\ 1.2 \\ \hline 21 \end{array}$$

at 5502.1 West Creek
South 10.8 and
at 5311.25 Creek East 6.9

From new on old plot 2000
14' north

Dec 5-1920 Sunday Bob and
I at home in training.

48

Dec 6 1920

figuring correction

$$10.8 \div 5502.1 = .01963$$

$$\begin{aligned} 1375.5 \times .01963 &= 2.69 N, \\ 2750.1 \times .01963 &= 4.39 N, \\ 4126.5 \times .01963 &= 7.98 N, \\ 5502.1 \times .01963 &= 10.88 N. \end{aligned} \quad \left. \begin{array}{l} \\ \\ \\ \end{array} \right\} \text{Nix}$$

$$6190 \div 5311 = .00137$$

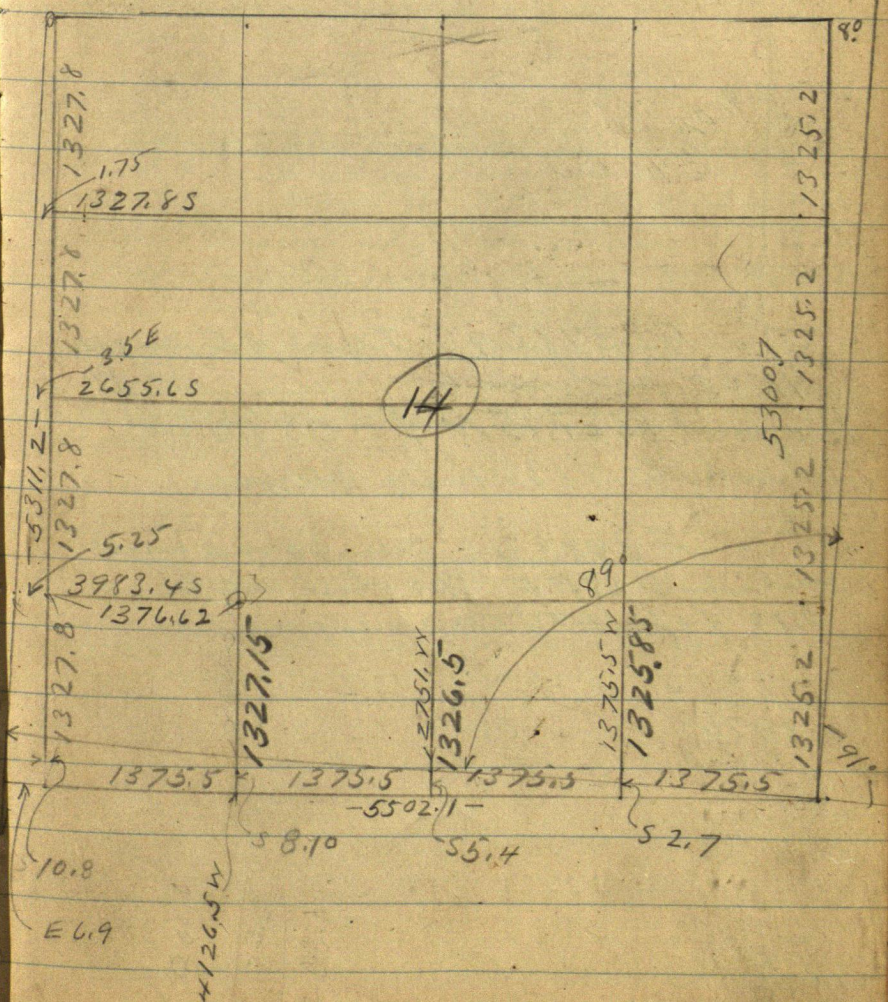
$$\begin{aligned} 1327.7 \times .00137 &= 1.81 \\ 2655.5 \times .00137 &= 3.62 \\ 3983.2 \times .00137 &= 5.43 \\ 5311.2 \times .00137 &= 6.90. \end{aligned}$$

1326.5		1326.5		1326.5
13278		13252		13755
226543	1325.2	22651.70		2
1327.15	1327.8	1325.85		2751.0
	22653.0	1		4126.5
				10019
1325.85	1326.5	1325.2		5502/10,800
1325.20		65		5502
.65	13278	132585		52980
13278	5311.2	132650		
2		65		07
2655.6		1327.15		
3983.4		132780		1327.8
13278	5311	10013		1325.2
5311.2		6.900		2.4
		5311		
		15890	269	
1891	175		23.500	1375.5
525	350		1.75	11
9455	525			1376.6
5782	7.00			
9455				
9927.75				

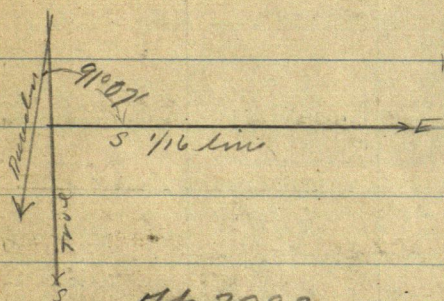
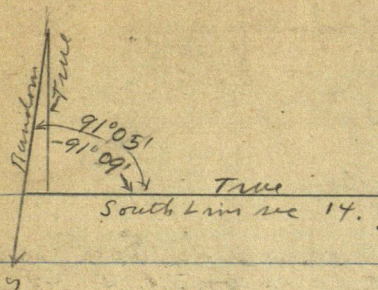
73.5

$$\begin{array}{r} 1400.0 \\ 1376.6 \\ \hline 23.4 \end{array}$$

$$\begin{array}{r} 1325.2 \\ 2650.4 \\ \hline 5300.8 \end{array}$$



50



At 3983.45 Turn NE angle
 91°07' and run East
 to a point 1327.15 N of West 1/16 but
 14 and 23 - T136-R2 Mission

At 3983.45 Turn 90° NE angle
 and run S 25 1/2 E 15 1/16 which will be
 0.10 of a foot N of our random

3983.4
 3971.3
 12.1

136-27

Minion

51

Dec 6-1920 Monday

Ed Young comes to Bramuel
and father Babcock back to Minion
cor bucker and they as. at
younge for a late dinner
no work

Coco is a witness for Alderman
and Clock at 10 AM.
dinner at home. Leaves Bed in
Baby Grande at 2 PM. dinner to
Bill Buchiler then to sec 29-138-27
Starts runny meets old man Stotz
and goes back to Rod Kimball for
supper. Rod and Coco goes to younge
for over night
no snow - colder.

John W Coco

From 34

From 34		Time Sheet										1920		
Spec	SUN	6	7	8	9	10	11	SUN	12	13	14	15	16	17
✓ John W Curo @ 85	0	-	-	-	*	1/2	1/2	0	1/2					OK
✓ Auto	0	-	-	1	-	1/2	-	0	?					OK
✓ I A Burch @ 85	0	-	-	-	*	1/2	1/2	0	1/2					
✓ H. Black	0	-	1	1	1	^{Total} 1	1	1	1					
✓ Auto	0	-	-	1	1	^{Total} 1	1	1	1					
✓ Ed Young	0	-	1	1	1	^{Total} 1	1	1	1			6		
✓ Auto	0	-	1	^{Total} 1	1	1/2	1	1	1					
✓ Rod Kimball	0	-	1	1	1	1	1	1	1					
✓ Curo @ 85	0	^{1/2} 1/2	1	1	1	1/2	1/2	1	1/2				7	
✓ Rob @ 85	0	^{1/2} 1/2	1	1	1	1/2	1/2	1	1/2					
✓ Bert Clark	0	1/2	1	1	1	-	1	1	1					
✓ Carl Clegg	0	1/2	-	^{1/2} 1/2	1	-	1	1	1					
✓ Lyle	0	-	-	^{1/2} 1/2	1	-	1	-	-					
✓ Alvin Young						1	1	1	1					

Board Sheet

Dec 1920

SW

6 7 8 9 10 11 12

SW

13 14 15 16 17

With Mrs Young

JW Owen

J P Babcock

Karl Knutball

H. Clark

Carl Clark

Albert ..

Mrs Clarke

Owen

Bab-

Knutball

Young

Meals.

Beds

132

124

670

201

84

120

124

69

114

84

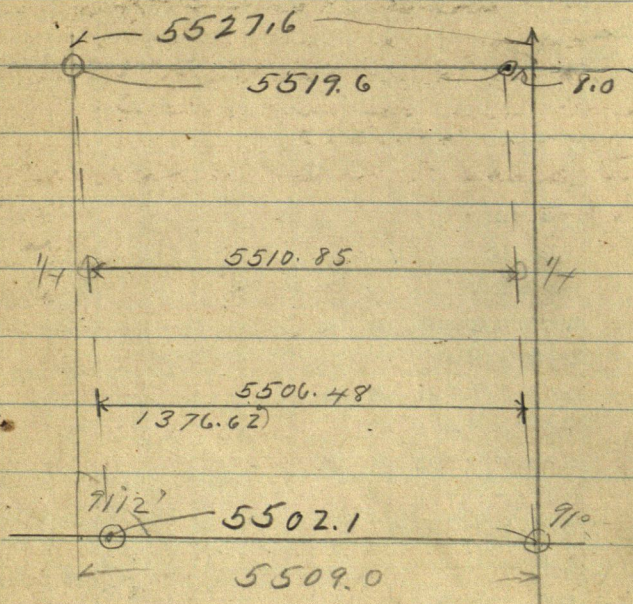
162

221

157

54

1.094
 4) 4375
 57
 15
 45506.48 1376.62
 15
 30
 26
 24
 8



5510.85
 5519.6
 3502.1 15
 2110217 5
 5510.85 10
 5502.10 2
 2110.12.95 5506.17 5
 10
 1376.62 12
 4) 5506.48 9
 15
 30
 26
 24
 5506.48 2
 11012.94
 1376.62
 5502.1 1375.50
 875 1.12
 5510.85 448
 5502.1
 44
 5506.5
 8 55
 5502.1
 5519.6
 5502.1
 4) 170.5 4.375
 16
 15
 12
 30
 8.750

136-27

55

December 7-1920 Tues

① Curo-Babcock-Young-H. Clark. But Clark
work all day Dinner at Clark's

Ed Young has trouble with his car

Bab & crew cut out N & E line of SE
SW-SW Sec 14-136-27

Curo looks for $\frac{1}{4}$ bet 11 and 14 136-27
but it is gone

136-27 Mission Twp Road

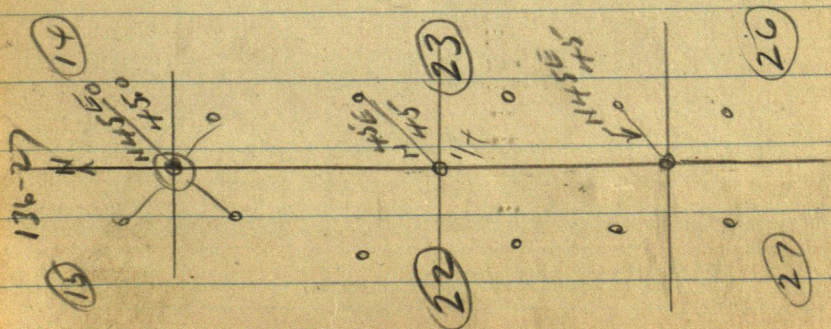
Dec 8-1970 Wed.

Gladys Young is 18 today
 Ed Young and his wife go to
 Brainerd to get his car fixed gone all
 day. Curo and Cor take Rod
 Kimball and I P. Batcock to work
 meet Harry and Bert Clark and
 Clark auto at school house at 5¹¹/₁₆
 bet 14-15-

Harry C and Rod Kimball put in 5
 INS at cor to 22-23-26-27-
 all mhd N 45° E 45' - N 45° W 45' //
 S 45° W 45' Ft S 45° E 45'.

P.M.

Carl and Lyle Clark help Bat set 5
 INS at 1/4 bet 22-23-
 Rod and Bert Clark set 5 INS @ cor
 to 14-15-22-23 136-27 in big meadow
 cor post sets in big 6 ft 2" circle 2"
 piling on pt of center iron set 2"
 above meadow level Bearings set
 flush with grass roots anchored
 with stones and pine knots



John W Curo

13627 Mission Top
Roods

Dec 8-1920 - Wed

Ed Young brings out my overalls from Ind.

Alma sends word for me to come to Beamed
10 miles as Gerald is out of school but I will
not go. Ht 5'10 Bet 14-15. we at

Co Surveyor - Ingram's stone pipe Cement Mon
level with the ground.

Bob and I set small oak stakes at
N 1/16 and S 1/16 bet 22-23.

Bob stays over night with H Clark
Rod Kimball and I come home alone in my
Baby Granda. No snow - South wind.
growing warmer 4" ice.
ground frozen 2 inches.

5
30
150
15
165

(58)

Dec 9-1920

$$\begin{array}{r} 5280 \\ 15840 \end{array}$$

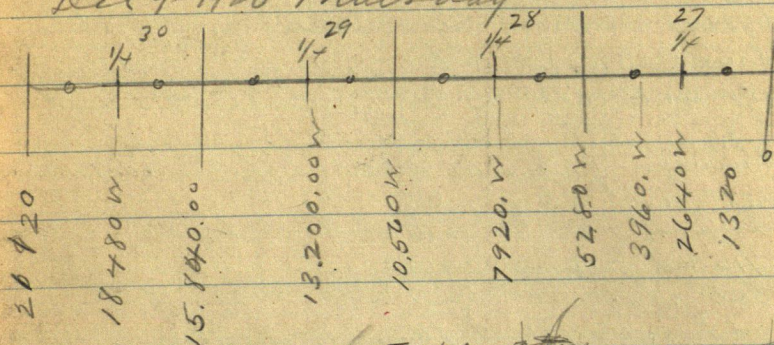
136-27 Mission

$$\begin{array}{r} 2076.480 \\ 468.180 \\ \hline 21233.60 \\ 21120 \\ \hline 113. \end{array}$$

$$\begin{array}{r} 15840 \\ 2640 \\ \hline 18480 \end{array}$$

$$\begin{array}{r} 5280 \\ 1320 \\ \hline 6600 \\ 5280 \\ 2640 \\ \hline 792 \\ 10560 \\ 2640 \\ \hline 13200 \end{array}$$

Dec 9-1920 Thursday



Temp

2630 // 2605
 Roughen 1/4 Roughen

$$\begin{array}{r} 10626 \\ 10560 \\ \hline 66 \end{array}$$

$$\begin{array}{r} 21 \\ 186 \\ 146 \\ \hline 2046 \end{array}$$

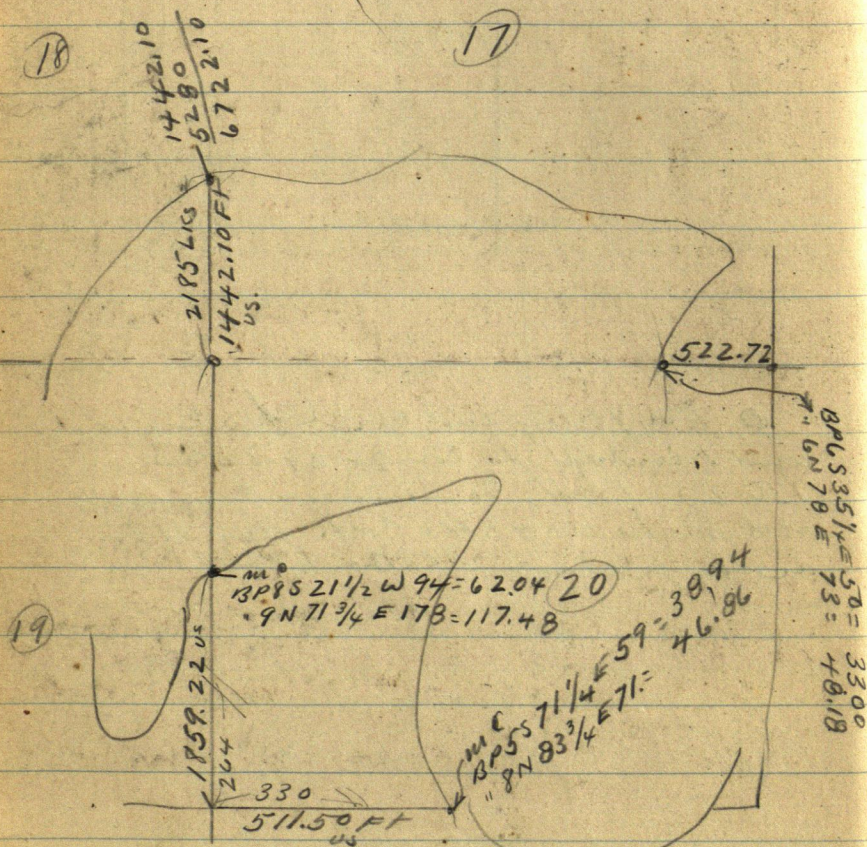
$$\begin{array}{r} 124.2 \\ 10503.1 \\ \hline 10627.3 \end{array}$$

$$\begin{array}{r} 18 \\ 108 \\ \hline 108 \\ 1188 \end{array}$$

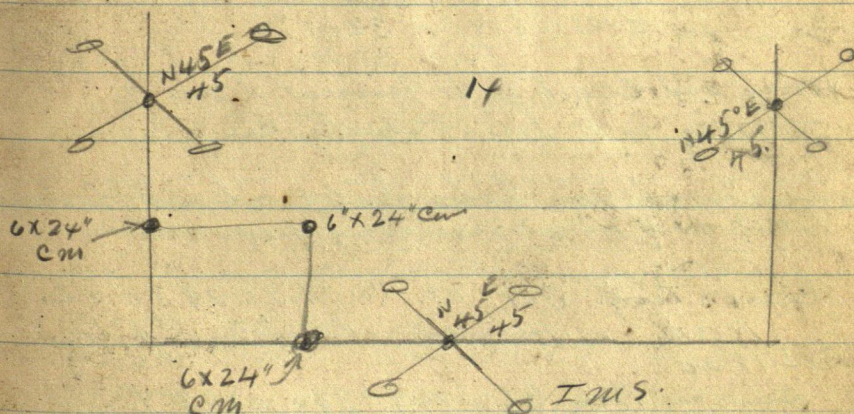
Rough chain
 1200 ft. and
 Beach

1200

60

$$\begin{array}{r} 792 \\ 4752 \\ \hline 4752 \\ 522.72 \end{array} \quad \begin{array}{r} 94 \cdot 178 \\ 564 \cdot 1068 \\ \hline 564 \cdot 7068 \\ 6204147.48 \end{array}$$
$$\begin{array}{r} 775 \\ 4650 \\ 4650 \\ \hline 57150 \end{array}$$


Dec 9 1920 Thursday
 H. Clark and Co. with Bolcack and 3. Clark
 Boys set I.M.S. viz



Cairo-Kimball young stake road & side
 Horn shoe.

Buy @ Cor 28-29-32-33 run
 North bet 28-29. $\angle 110^\circ$. 450 ft set stake
 on sec line (almost) 1. mark E end
 of new road. Thence
 West $\angle 80^\circ$ to pt near Burr Lake
 & new road.

John W. Curo

62

136-27 Mission

I got back from Beamed @ 7-30 this morning ~~am~~

Dec 10-1920 Friday.

Kimball-Cuss-Young Cut + stake road line around N side Bass Lake. Also set stakes for ZMS. @ Co 28-29-32-33

Clark and Babcock come and dig the holes for ZMS. @ SW Co 32-136-27
P.M.

Young and Clark go to Beamed to see Co attorney as to how Clarks can.

Cuss and Car take Babcock and Kimball to Mr. W of Horse Shoe put up flag. then
From

Cuss's Temp Cor-o-o. Co 19-20-29-30 etc
North on Harald's old transit line
Bet 19-20

Cuss and Bab Ch - PB-300 start trip
300-600-900-1200-1500-1800 Quit for dark
Jock Smith comes on line and I
Lv my transit with him.

6890.5
 1272
 6766.3
 6765.1

1800
 260
 2060

1859
 36
 1895-

= 63

6600.0
 165.1
 6765.1

Dec 11-1920 Saturday

Curo-Bob Chain - Kimball checking
 Ed and Melvin Young & their co
 Continue

North At 19-20

1859.22 Temp M.C.

1895 Top of seawall. Second Beach
 lies along sea wall
 2060. edge of water

2100 stake on ice.

2400 " "

2700 " "

3000 " "

3300 " "

3600 " "

3900 " "

4200 " "

4500 " "

4800 " "

5100 " "

5400 " "

5700 " "

6000 " "

6300 " "

6600 " "

Plus 105 = 6705. Lt water

6600 + 165.10 = 6765.1 IM-ANC.

64

60	90
27	27
33	630

$$\begin{array}{r} 52.00 \\ 30.30 \\ \hline 21.70 \end{array}$$

$$\begin{array}{r} 26.40 \\ 22.60 \\ \hline 380 \end{array}$$

$$\begin{array}{r} 41 \\ \hline 123 \end{array}$$

$$\begin{array}{r} 21 \\ \hline 2220 \\ 38 \\ \hline 2260 \end{array}$$


Coneslion = .006423

17.282.1 ft us.

$$\begin{array}{r} 6.765.1 \text{ mych} \\ 10.628.0 \\ \hline 17.393.1 \text{ mych} \end{array}$$

$$\begin{array}{r} 5280.0 \\ 3 \\ \hline 15.840.0 \\ 1.442.1 \\ \hline 17.282.1 \text{ vs} \end{array}$$

$$\begin{array}{r} 10.628.0 \\ 6.765.1 \\ \hline 17.393.1 \text{ vs mych} \\ 17.282.1 \text{ mych us} \\ \hline 111.0 \text{ Long.} \\ 1.00076 \end{array}$$

$$\begin{array}{r} 17.282.1 \\ 114.090.0 \\ \hline 172821 \\ 937179 \\ \hline 1036926 \\ 864105 \\ \hline 1036926 \\ 1381747 \\ \hline 1209747 \end{array}$$

$$\begin{array}{r} 17282.1 \\ 111.0000. \\ \hline 1036926 \\ 730740 \\ \hline 691284 \\ 394560 \\ \hline 345612 \\ 489180 \\ \hline 18463 \\ 345642 \\ \hline 143538 \end{array}$$

$$\begin{array}{r} 10560 \\ 6423 \\ \hline 3168 \\ 2112 \\ \hline 4224 \\ 6336 \\ \hline 6782688 \end{array}$$

$$\begin{array}{r} 3391 \\ 6783 \\ \hline 101.74 \\ 14421 \\ 6423 \\ \hline 43263 \\ 28842 \\ \hline 57.684 \\ 86526 \\ \hline 9.2626083 \end{array}$$

$$\begin{array}{r} 513842 \\ 12846 \\ \hline 32148 \\ 5280 \\ 6423 \\ \hline 15840 \\ 10560 \\ \hline 21120 \\ 31680 \\ \hline 33913440 \\ 2 \\ \hline 67.82688 \end{array}$$

$$\begin{array}{r} 10174 \\ 926 \\ \hline 11100 \\ 10560 \\ 67.83 \\ \hline 10.627.83 \end{array}$$

$$\begin{array}{r} 6250 \\ 33.91 \\ \hline 5313.91 \\ 10628.0 \\ 5313.9 \\ \hline 5314.1 \\ 5460.0 \\ 5314.1 \\ \hline 5314.1 \\ 85.9 \\ \hline 10528.0 \\ 5314.1 \\ \hline 5213.9 \\ 21062.8 \\ \hline 5314.1 \end{array}$$

$$\begin{array}{r} 300.20 \\ 247 \\ \hline 1.56 \end{array} \quad \begin{array}{r} 21.70 \\ 21.12 \\ \hline 580 \end{array}$$

$$\begin{array}{r} 380 \\ 82 \\ 760 \\ 3040 \\ \hline 3.1 \end{array} \quad \begin{array}{r} 270071 \\ 56.77 \\ \hline 270 \end{array}$$

all of 35 ST.?

$$5280 + 33.91 = 5314.1$$

$$10.560 + 67.83 = 10.627.93$$

$$15840 + 101.74 =$$

$$1442.1 = 926 =$$

$$\begin{array}{r} 5280 \\ 1.00682 \\ \hline 528036000 \\ 31680 \\ \hline 43200 \\ 42240 \\ \hline 9600 \end{array}$$

30.3

30.3

52

72170

$$\begin{array}{r} 1880 \\ 150 \\ \hline 1650 \\ 35 \\ \hline 1685 \end{array} \quad \begin{array}{r} 2640 \\ 1685 \\ \hline 9554 \\ 264 \\ 82 \\ 528 \\ \hline 2112 \\ 21648 \end{array}$$

$$\begin{array}{r} 9554 \\ 82 \\ \hline 1910 \\ 7640 \\ \hline 783105 \end{array}$$

$$\begin{array}{r} 30.3 \\ 7.8 \\ \hline 38.15 \end{array}$$

$$\begin{array}{r} 53.28 \\ \sin 59529 \\ \cos 80351 \end{array}$$

$$\begin{array}{r} 80351 \\ 160702 \end{array}$$

$$\begin{array}{r} 16.52 \\ 16 \\ \hline 36 \end{array}$$

$$\begin{array}{r} 360 \\ 1 \text{ mil } \approx \\ 23.38 \end{array}$$

US Nates Town Line

West side 136-27 V 11°30'E

N Bat 25-30 V 11°30'

4000 1/2 Bat 25-30

P 12 S 80 E 39 =

P 16 N 79 W 48 =

4850 @ Pond 2 1/2 dups

5495 (=) Pelican Lake m.c.

P. Pin 10 S 24 W 80 =

" " 8 S 70 1/2 E 69 =

US Nates

6950 (= 4587.) L Pelican m.c.

Pin 8 N 35 E 180 =

" 8 N 8 W 284 =

8000 Cor 24-25-29-30 136-27-28

P 8 S 2 1/2 W 490 =

" 6 S 15 E 278 =

" 7 N 82 W 327 =

N Bat 19-24 V 11°30'

300 (=) Pelican Lake m.c.

P 8 S 2 W 790

P 6 N 55 1/2 E - - -

West Bat 24-25-136-28 V 10°45'E

370 (=) Pelican Lake m.c.

B P 6 S 51 E 570 =

B P 6 N 85 E 785 =

13
3
38

263) 3412 (12.95

263

782

526

2560

2367

1930

1578

2 3.9

4 7.8

9 11.7

12 15.6

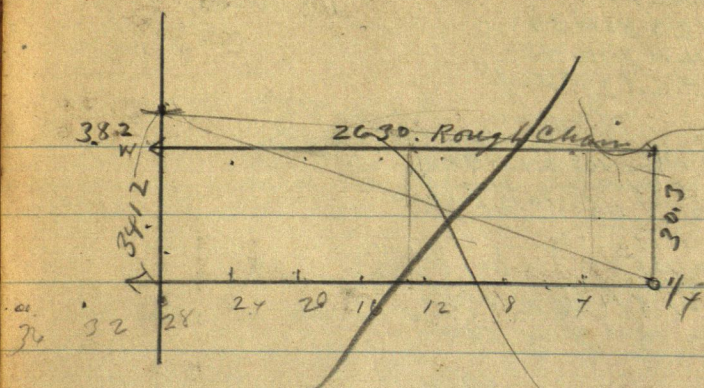
(68)

$$\begin{array}{r} 3030. \\ 124 \\ \hline 2856 \end{array} \quad \begin{array}{r} 3030 \\ 131 \\ \hline 2900 \end{array}$$

$$\begin{array}{r} 3030 \\ 87 \\ \hline 2943 \end{array}$$

$$\begin{array}{r} 3030. \\ 44 \\ \hline 2986 \\ 43 \\ \hline 2943 \end{array}$$

$$\begin{array}{r} 30.3 \\ 382 \\ \hline 3412 \end{array}$$



300 W goes S 30.3 and N. 44 = 29.86 S

600 W " S 30.3 " N. 87 = 29.43 S

900 W " S 30.3 " N. 131 = 29.00 S

1200 W " S 30.3 " N. 174 = 28.56 S

1315 W " S 30.3

1500 W " S 30.3

1800 " " S 30.3

2100 " " S 30.3

2400 " " S 30.3

2630 " " S 30.3

263) 382.
263
 1190 871.50
 105229050
 1380820.075
 1315
 650
 526

136-27

Mission

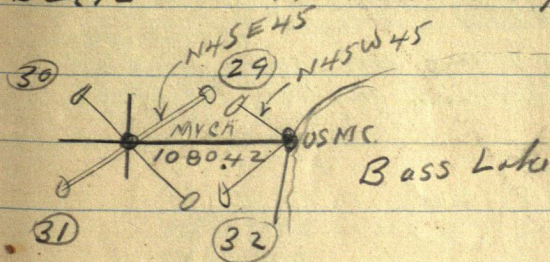
Temp

14525
3
 43575
2
 87150
 130725
 43575
 174300

(69)

Dec 12- 1 24 1920 Sunday

28130
 40.65



To put in Co to 29-30-31-32-136-27

@ 5314.5 on Bab's random - turn 90° and run East 40.65 East to place line with straight line N45 from NW Co 29 to SW Co 32. Then run a line of pickets East

@ 90° random

Begin @ 1/4 Sec side 30 run East on line line

2) 2630

1315 west gas N 15.5. and N 19
1.9
 13.6

2382
 69.1

Dec 12-1920

H. Clark - Albert and Carl Clark and
Auto - Melvin Young Ed Young and Co
JW Curo - IP Babcock and Rod Kimball

160
273
✓33

208.8
35
5.040

(71)

Dec 13-1920 Monday

8° J

- | | | | |
|----|------------------------|--------------|----|
| 0 | | 450' N of Cr | |
| | West 137 To | To 5 1/2 | |
| 1 | N 46° 15' W 522. To 26 | | 2 |
| | N 15° N 7° W 55.2 | | |
| | 906 S 80 E 42.0 | | |
| 2 | N 0° 2' W 307.4 | " | 3 |
| 3 | N 64° W 304.0 | " | 4 |
| | 260.8 | | |
| 4 | N 73° W 205. | " | 5 |
| | J. P. 12 N 15 W 70.7 | | |
| | " 6 N 58 E 42.0 | | |
| 5 | N 73° W 433 | | 6 |
| | 273 | | |
| 6 | N 86° W 205.0 | | 7 |
| 7 | S 84° W 286.0 | | 8 |
| 8 | S 60° W 98.0 | | 9 |
| | 563 119.8 | | |
| 9 | S 34° W 515. | | 10 |
| 10 | S 40° 30' W 314 | | 11 |
| 11 | S 65° 30' W 117.5 | | 12 |
| 12 | S 70° 45' W 509. | | 13 |
| 13 | S 59° 45' W 118. | | 14 |

$$\begin{array}{r} 72 \quad 2988 \\ \quad 15 \cdot x \\ \hline 314.2 \end{array}$$

14 S 70°W 180.0 T₀ 15

15 S 67°45'W 313.5 16

16 S 89°30'W 135.5 17

17 S 72°W 107.7 18

18 S 58°W 213.8 19

19 in operation see line 33 W
J.M.P.

3000
181.5
118.5

609
318.7
381.3

(73)

- 2¹ 0 right on line 381.3 E 7 1/2
- 2² 0 S 60° W. 182.1
(5830 39' W) 1
- 2³ 1 N 82° 45' W 204. 2
- 2⁴ 2 S 80° 40' W 89. 3
- 2⁵ 3 N 81° 30' W 12.7 4
- 2⁶ 4 N 50° W 169.3 T. alt 5
173.3
- 2⁷ 5 on line 421.5
418.5
3
421.5
- 169.3
4
173.3

From station 4 Run S. 85° 5' E 73.5 ft to station 5.

S. 5° - N 83° W 70.0 to sta 6.

S 6 N 36° 56' W 165.1 to sta 7.

Then from old stat 5 to sta 7 = 86 ft.

74

$\frac{12}{12}$
 $\frac{36}{12}$

13.

$\frac{13}{3}$
 $\frac{39}{39}$

2630 30.3
3.8
24.1

263 34.1
15.6
263
780
789
40

13
4
7.8
3.8
40

900
13
117
38
79

300E 900N 3.8 " S 3.9 = 0.1 S

600E " N 3.8 " S 7.8 = 4.0 S

900E " N 3.8 " S 11.7 = 7.9 S

1200 " N 3.8 " S 15.6 = 11.8 S

1315E " N 3.8 " S 17.09 = 13.29 S

1500E " N 3.8 " S 19.50 = 15.70 S

1800E " N 3.8 " S 23.4 = 19.60 S

2100E " N 3.8 " S 27.3 = 23.5 S

2400E " N 3.8 " S 31.2 = 27.4 S

2630E " N 3.8 " S 34.19 = 30.39 S

263 18.30 1.696

30.3

$\frac{120}{18.3}$

18.3

18

$\frac{2}{12.6}$

12.6

2.1

15

$\frac{2}{10.5}$

10.5

24

$\frac{2}{16.8}$

16.8

1578

2520

2367

1630

267

17

144

1841

12

30.4

915

15

2115

2

$ \begin{array}{r} 15.6 \\ 3.8 \\ \hline 11.8 \end{array} $	$ \begin{array}{r} 15 \\ 13 \\ \hline 45 \\ 15 \\ \hline 19.5 \\ 3.8 \\ \hline 15.7 \end{array} $	$ \begin{array}{r} 15.5 \\ 190 \\ \hline 13.25 \end{array} $	$ \begin{array}{r} 15 \\ 13 \\ \hline 45 \\ 15 \\ \hline 19.5 \\ 3.8 \\ \hline 15.7 \end{array} $	$ \begin{array}{r} 13.15 \\ 13 \\ \hline 3945 \\ 13.15 \\ \hline 17.095 \\ 3.80 \\ \hline 13.29 \end{array} $	<div style="border: 1px solid black; border-radius: 50%; width: 40px; height: 40px; display: flex; align-items: center; justify-content: center; margin: 0 auto;">75</div>
$ \begin{array}{r} 18 \\ 17 \\ \hline 57 \\ 18 \\ \hline 23.4 \\ 3.8 \\ \hline 19.6 \end{array} $	$ \begin{array}{r} 13 \\ 3945 \\ \hline 1315 \\ 17095 \\ \hline 3.8 \\ 13.29 \end{array} $	$ \begin{array}{r} 15 \\ 13 \\ \hline 45 \\ 15 \\ \hline 19.5 \\ 3.8 \\ \hline 15.7 \end{array} $	$ \begin{array}{r} 13 \\ 21 \\ \hline 13 \\ 26 \\ \hline 27.3 \\ 3.8 \\ \hline 23.5 \end{array} $	$ \begin{array}{r} 40 \\ 3 \\ \hline 37.2 \\ 76.2 \end{array} $	
$ \begin{array}{r} 2630 \\ 600 \\ \hline 2030 \end{array} $	$ \begin{array}{r} 13 \\ 24 \\ \hline 52 \\ 26 \\ \hline 31.2 \\ 2.8 \\ \hline 27.4 \end{array} $	$ \begin{array}{r} 263 \\ 13 \\ \hline 789 \\ 263 \\ \hline 3419 \\ 380 \\ \hline 3039 \end{array} $			

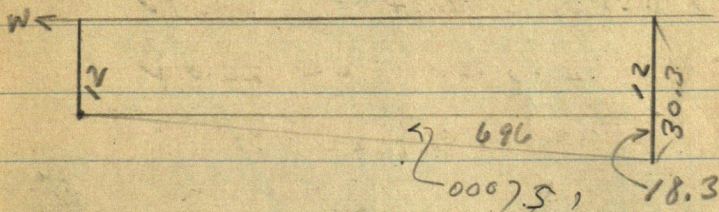
Bill Gibson and I chain
 from NYS Random E 15 cm
 and find dirt 76.2

76

$$\begin{array}{r} 20 \\ 15 \\ \hline 2630 \\ 1500 \\ \hline 11.30 \end{array}$$

$$\begin{array}{r} 2630 \\ 1200 \\ \hline 1430 \end{array}$$

$$\begin{array}{r} 2630 \\ 900 \\ \hline 1730 \end{array}$$



300. Equus $2.1 \times 12 = 14.1 =$

600 " " $5 \ 4.2 \times 12 = 16.2 =$

900 " " $5 \ 6.3 \times 12 = 18.3$

1200 " " $5 \ 8.4 \times 12 = 20.4$

1315 " " $5 \ 9.15 \times 12 = 21.15$

1500 " " $5 \ 10.50 \times 12 = 22.50$

1800 " " $5 \ 12.60 \times 12 = 24.60$

2100 " " $5 \ 14.70 \times 12 = 26.7$

2400 " " $5 \ 16.80 \times 12 = 28.8$

2630 " " $5 \ 18.40 \times 12 = 30.4$

$$\begin{array}{r} 113 \\ 79.1 \ 2 \\ \hline 19.91 \end{array} \quad \begin{array}{r} 143 \\ 10.01 \ 2 \\ \hline 10.01 \ 2 \end{array} \quad \begin{array}{r} 173 \\ 12.11 \ 2 \\ \hline 12.11 \ 2 \end{array} \quad \begin{array}{r} 203 \\ 17.21 \ 2 \\ \hline 17.21 \end{array}$$

77

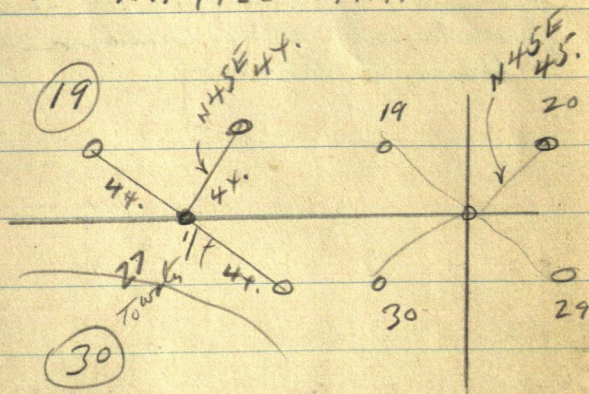
Dec 13-1930 Monday

600W=2030E gauss $14.21 + 12 = 26.21V$

900W=1730E " S $12.11 + 12 = 24.11V$

1200W=1430E " S $10.01 + 12 = 22.01V$

1500W=1130E " S $7.91 + 12 = 19.91V$



Cod Kintall - AT

Harry Clark - Curio Babcock

Carl and Albert Clark out about 2000.

Ed Young takes Melvin to school
in Beavertown and gets back @ 10 a.m.
about out.

Bob and I go to Bed after supper.

78

$$\begin{array}{r}
 25 \\
 35 \\
 \hline
 125.2 \\
 75 \\
 \hline
 87.50
 \end{array}$$

$$\begin{array}{r}
 84 \\
 15 \\
 \hline
 202 \\
 84 \\
 \hline
 126
 \end{array}$$

Pelition

Beg @ $\frac{1}{4}$ on West side Sec 24 -
 Thence East $\frac{1}{2}$ mile to Center of sec 24
 Thence in a southerly direction thru
 Secs 24 and 25 over the most practical
 ground - following $\frac{1}{16}$ lines where
 practical to an intersection with the
 Dean Lake Road.

Cooley - Saunders

Receipt

Jenkins Minn March 21-1935

Received from Mr Dwight R. Cooley
1569 Margret St Saint Paul Minn

One Cottage Key to Cottage on Lake ^{Ada}

Also \$25. as payment in full for the
correct survey and establishment of
the East boundary line of Gov Lot 3.
See 27-139-29 Cass Comm

Note: The above twenty-five dollars
is to be mailed to me within a few days

(seal)

Signed John W Cooley

Note more: Mr Cooley has handed me
\$5. and will send the \$20 when he gets
back to St Paul Signed John W Cooley

1-45 MM March 22-1935

March 21-1935:

Mr Cooley and Lewis J. Saunders
of Summit Hall 327 Jackson
St St Paul called at my house
in Jenkins and as Mr Saunders
may get title to some lake lands
just east of the Cooley lands on
Lake Ada I told him I will plat
it up for \$350 and he may pay

(2) Coaley Mar 22-
1935 139-29 (81)

me out of the sales

Saunders says O.K. he will do it.

I explain that I have not
enough expense money to go

ahead now and Mr Coaley says
he will donate \$25 toward expense
if I will start now and get his
first line. I tell him O.K.

He will also let me use his cottage
on Lake Ada and gives me the key
Coaley says he has not got the
money with him now but will send
it - discovers a five dollar bill
in his pocket and hands it to me
on account

Coaley also wants 8 lots
platted in SW Cor Lot 3 - Sec 27 -
139-29. I tell him I will do it for
twenty five and he says no.

Evening: I write him that I
will plat his lots for \$15.

March 26-1935

I receive from Mr Coaley a letter
with \$25 P. O. Order - being pt in
full and \$5 to apply in platting the
remaining \$10 to be paid when
plat is filed

John W Cooley

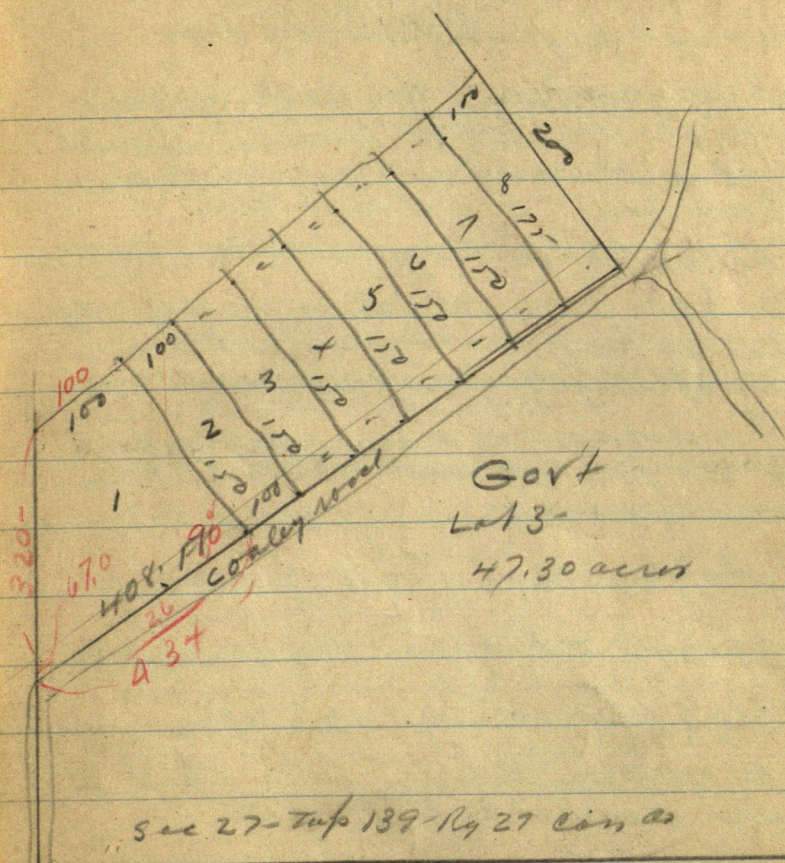
over

82

(3)

See Field Book #156.

386.3

$$\begin{array}{r} 66 \\ 320 \end{array}$$


Dwight R. Cooley 1569 Margaret St
St Paul. Partial copy of plat left
by Cooley & Saunders March
21- (or 22) 1935 at Jenkins

John W. Cooley

84

⑤ Cooley

March-1935 Dale & I lost Reed and I work on preliminary lines on E side and thro center of sec Sec 27-139-29-

We open Cooley Cottage - but don't use it as we drive from home at Jenkins slippery roads.

April-1935 Reed and I dig up Cor 27-28-33-34-139-29 - run random line East.

April 7-1935 Sunday

Dwight Cooley and Ernest F. Witke of 1763 St Clair St Saint Paul ar at Jenkins 9 am enroute to Lake Ada. Cooley gets his Cottage key and will keep it. I tell them they will get stuck in soft snow and mind Cooley wants me to come up tomorrow. I tell him - maby.

April 8-1935 Monday - about noon Cooley and Witke. return en-route home stop at the office and give me instructions as to a piece of land Witke is buying and want me to promise to stake it out free of cost. I tell them I will not promise - and am going up tomorrow.

Apr 9-1935 Tues

Dwight R.
Cooley

(6)

Lot 3- Sec 27-
139-29.

25

April 13-1935

Carl A. Ryan gives us two checks
one to Reed \$5. one for \$10 = \$15.
Plus \$5 he paid me March 1935
being payment in full (\$20.) for preliminary
survey of his land at Cross Lake

Pick up Bernard Harms and his axe &
lunch - and with Reed - drive to Reguot
Cash our checks - back to Jenkins
Reed mails \$5 air mail to Harold J.
Euro Cathay Calif c/o Bridgeport Inn
At Lake Ada 10 AM.

We drive to graded road N-S thro E $\frac{1}{2}$
NE $\frac{1}{4}$ Sec 27-139-29.

Begin Temp center of East half
3 P.M. E-W-N. run

N along road - Williamson = ch Reed
dinner & ahead.

30.0 is South wheel track E-W road
ch North $3+2=5+3=8+2=10+3=1300$ stake
in N-S road continues along same road
North 15 spike 400 stake on line about .70 of
a foot E of line - one ft W of W wheel
track on top of hill then downhill
 $300+100=1900$. Wood hub $1\frac{1}{2} \times 16$

2 road Road turns N E
T over 1900 BS- 80 Run
N

Time Sheet working For Curo-on Cooley - Saunders - Contracts

86

1935 March 21 26

April

7	8	9	13	17	18	19	20	21
---	---	---	----	----	----	----	----	----

John W Curo K

205

Expense

Reed Curo

Bernard Turner

25/8/08

2. Leedjacob's

0500

1/2	1/2	500
359	359	359

7

April 13-1935 continued

Mrs Carpenter says The Iron Mon
on the side of lake Ada set series

27-28-139-29 (MCN=8 I think)

was gone a while ago - anyhow I
find it stuck in the ground a foot
SW of line point where I once set
it

SEE Page 7-Book 156.

I carefully chain in from all old
BT Marks and drive a spike for the
line corner. Ground frozen cannot
drive I m.

Old B.T. Stump NP15N56°E 32 Lks = 21.12 FT
OK Still plainly visible turned from line
line south NEW

JP8N 88°20'E 21.6 To spot at base

NP12S 16°40'W 54.10 " " " "

NP10S 31°02'E 15.40 New " " "

NP8S 82°40'E 34.95 New B.T.

Plumb-bob Chain

WORK Heller on line on top of hill
near Carpenter Cottage Pass my
line from Iron Sec. Co. North then
Iron Sec. Co. S 1/4 Sec. 10 and extend
line north 5 km in bottom E side of
line near lake set spike 0.10 E

offset 0.10 E and run N T. a pt 0.10

E of spike @ MCN=8.

OK. My line OK. Nali my line
would pass the E edge of line on bank
but too close for long distance shot
as we sets at foot of hill down down

Interest road running N E
with set line and lake NE angle
29°41' - 59°22' - 89°05'

Cloudy - 29°41' OK. Home @ 6 p.m.

Nali I am to pay Harris \$1.25

See T. IANP12N13°30'W 61.95

OK 8N 78°30'E 27.10

Turned from Sec. line

7°

John W. Carr

(88)

9

139-29
Coaley

Apr 14-1935 Sunday

Apr 15-1935 Monday Rec letter from Coaley
he will be up Friday

Apr 16-1935 Figure

Apr " 17 " Wed. 2-PM. Z Lee

Jacobs and I to Senhirm Reed alone - sick
in bed. Beg @ 5 $\frac{1}{16}$ IM Bat Seer 27-28

139-29 ch N 207.7 Spik on hills + 197.3 =

405.0 Drift Balt Hub @ IP of roads

Beg @ 405. ch N 300 + 33.5 = 333.5 Spik on
Hill + 52.80 = 386.30 T. Spik at

N.C. N = 8.

207.70

197.30

405.00

300.0

33.5

333.5

52.80

386.3

386.3

405.0

791.3

Beg @ IP ch

N 29° 41' E 229.4 Hub on Hill 1 ft E of E wheel
Track Drive 3/4 mile E

N 29° 41' E 1063.5

Sine 62854 x 1063.5 = 679.08

Cosine 76959 x 1063.5 = 818.46

818.46

405.00

1223.46

3422.2

526.66

3948.86

April 17-1935 could

N 29° 41' E 1063.5

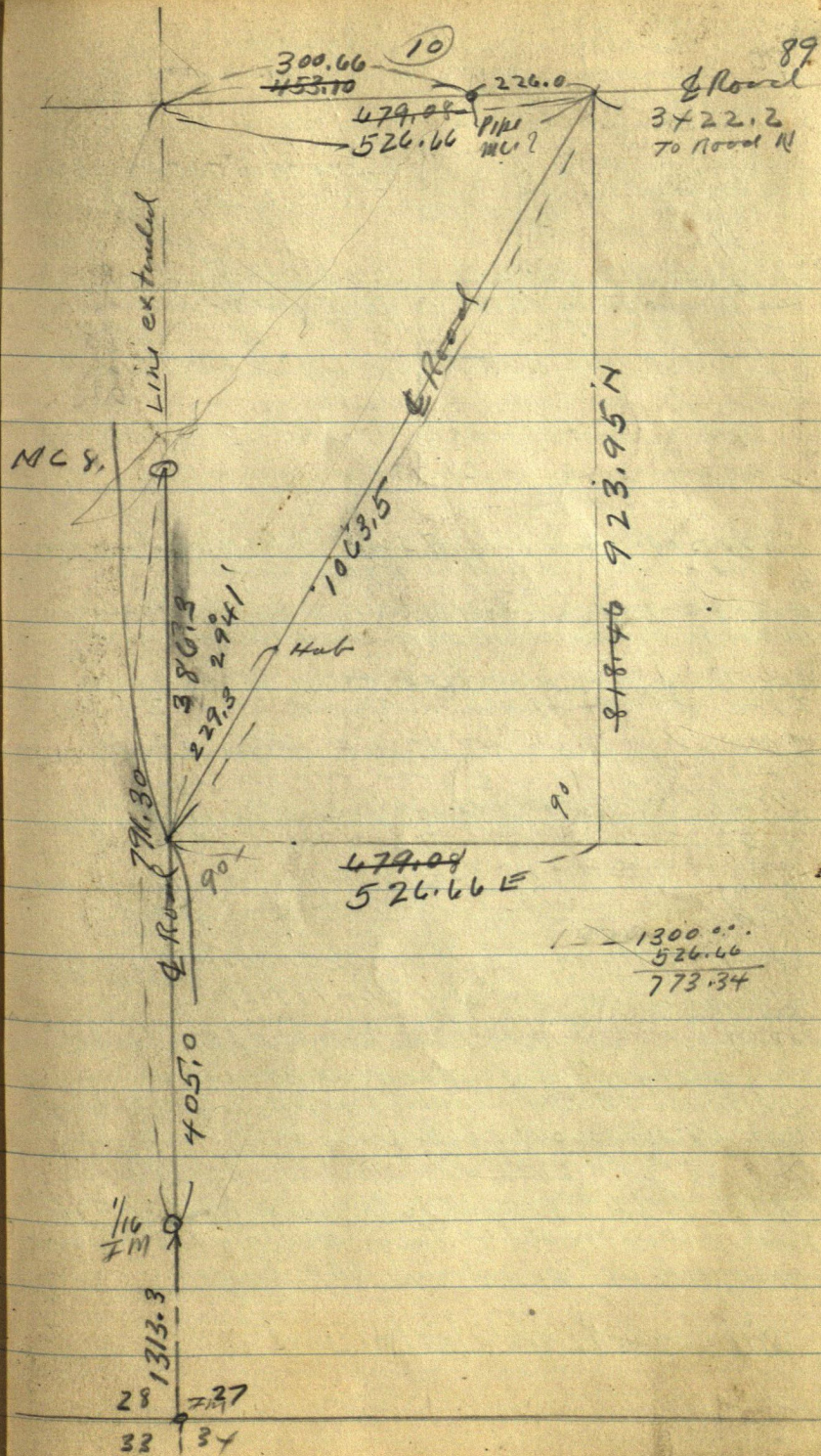
Sine 49521 x 1063.5 = 526.66 E

Cosine 86878 x 1063.5 = 923.95 N

3960.00

3948.86

Short 11.14



(12)

Coaley

91

April 17-1935 cont'd

Walk 3 1/2 miles west Beg @ 0004

West on E road: 3-6-9-12-15-18-

21-24-27-30³³ Spikes in E road Nat

on line 33+122.2 = 3422.2 W Birch

slake at 00. - L road 3600 spk. +

4812 = 3648.2 M.C. I.M. on E road Ady

LK and probably on E W & 27

139-29-

Beg @ Hub 229.4 ch NE & road 70.6 =

3-6-9-00 Spikes in E road on line

+ 163.5 = 106315 Birch slake at 79

Young Jacob and I as Jenkins

7-20 PM I quit him 35

Nate Timmer:

Siltman will get 1500 timbers

@ 20¢ = 300. The 40" has only about

25 acres Jack Pine on a part

half lake later 15 acres off the

NW Cor.

Nate Siltman is cutting 1/2

mile from where his land is

and is probably on SW SW

to bat SW of SE

Timber to be 8 ft long 8"

inside the bark at top end

Noah

is helping him

and says the old 1/2 cor slake

stood where the 3 ft culvert

now is 3946.8 E of road.

Archie Siltman - Notice of cutting SW NE

26-139-29

Reed still stuck in bed

Stayed home alone - This is his 2nd 3rd day

John W. Cooley

92

12 1/2

April 18-1935 Thurs.

I am 64 Today ¹⁹³⁵
~~1871~~

Am Chief-of-Police

Registered and bonded For Village of

Jenkins also a Constable Reg. Bonded
for same - a member of Minnesota

Police Association and carry a card

also: Registered Civil Engineer and
Surveyor (2. things) and have my seal.
Minnesota No 927. Reg No. 1428Have exactly Six dollars - counted
Am strong and healthy.Living alone with Reed - who is sick in
bed - Sick 3 days now.Big dance last night 4 doors so. Nite Club Rm.
up at 8 AM - Cloudy and Cool.

1300 -
526.40 773.34

all am. in Jenkins

2 PM. Z. Lee Jacobs and I

Lv Jenkins

I forgot my reading glass

Turn angles without glass - close closely

Heller over IR Sta. 0.0. BS S 29° 41' W

Road taking 0 mile East turn

Road & East 0° 10' S about one mile E

PE - 24173.345 pike + 3 = 473.34 + 300 = 773.34

Spoke 6 ft N of & Town 773.34 BS W + turn

North on Random W 1/4 line. 300 Hub

Cut 600 ft. Quail for mile

Note: I drove E showed young
Siltman "Archie, you are on the wrong forty
you are half a mile too far west Coro"

Noah Rambo is still cutting timbers

Home at dark pay young Jacobs 35¢ in
full

Jahill W. Cunn

April 19th 1935 Friday

up early - Reed still sick in bed.
Dwight Couley arrives from St Paul
Beuchman of St Paul
with W₄
about 8-am I send them on and
will follow later

Pick up young Jacob & Harner @ 9 am
all three take own lunch.

Hell on slope 2.0. Re-check angles. Re-set spike
Hub @ Sta 1 (773.34 E) Ties

Pop 10 N 49° 53' E 24.50 To spot at base

Birch 12 N 64° 15' W 33.05

& Road 6/120 Var Turned from random

Note: All Hubs are 60 of spikes - red cloth
N-3-4 15.05 Hub; 485 Foot / slope NW-SE
Ent Bottom 560 Ent mark NWSE

600 Hub 20 ft E of W Edge of Marsh: 771.2 Hub

Lu marsh - on low seawall 780 Bottom

850 Lu Bottom land. 900 Hub. 1012.6 Hub

1200-1500-1546.6 Hub) Birch 10 N 19 E

Ties @ 1546.6 / 4.60. Oak 8 N 82° 25' W 26.80

7° 10' Var 1500 + 276.7 = 1776.7 SPIKE 60 of

in E half green 9" Birch stamp 1800

Stake on low seawall 20 ft wide 10 ft E

Foot of hill 10' W of top 75' W of water

@ 2000 stk marsh lies W 20 ft

2150 stake; 2105 Lu bottom

2134. Hub on wide seawall

Birch 6 N about 75° W 10.15

Dead Birch 850 ft 5° W 21.80

526.16 East 90°

773.34 40° 10'

2140 & Top 3 ft seawall

2145 Foot 2160 sand

Beach 2404. water

All Hubs 60 of spikes 5-30 Quilt-

Note: I meet Mark Westfall

Note: P. M. Stalling of St Paul

Archie Siltman's 'Cem man'

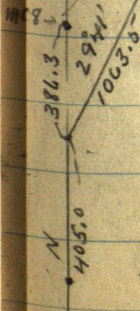
8/1.25 due Harner. 50 & due Jacobs

Home at dark - 9 p.m. Marion Wallen

calls Reed for C.C. exam at Reed
in the morning

J.W.C.

I left Couley @ 2:00 in. at 10 accuracy his track



94

Apr 20-1935 Sat.

Reed still half sick goes to Biannet
 with Harms - etc & back. Paul Zeke
 eats dinner with me. I tell him \$350
 To plat his land. \$50 To \$75 To fix his
 line & dry. He says No plat - but OK. to
 fix line - PM - McKinley & Dwight call
 Rec letter N^o 2 from Harold, Cothay Calif

29°41'

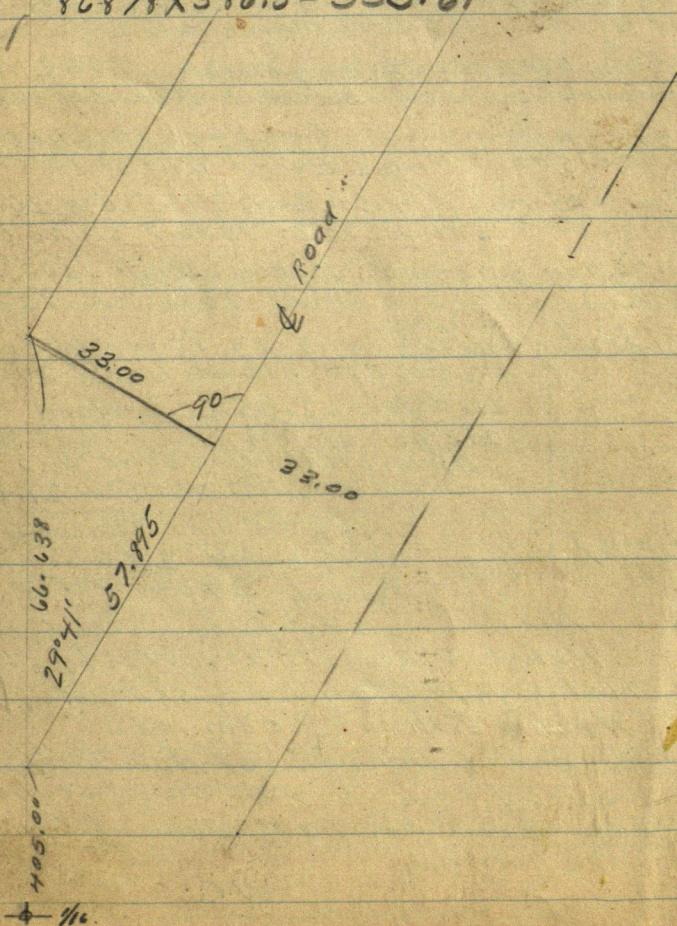
$$\sin 649521 \times 66.638 = 33.00$$

$$\cos 86878 \times 66.638 = 57.894$$

$$\tan 4570.00 \times 57.895 = 33.00$$

$$86878 \times 386.3 = 335.61$$

386.3



96

$$\begin{array}{r} 193.5 \\ 11.5 \\ \hline 205.0 \end{array}$$

$$\begin{array}{r} 193.5 \\ 33 \\ \hline 160.5 \end{array}$$

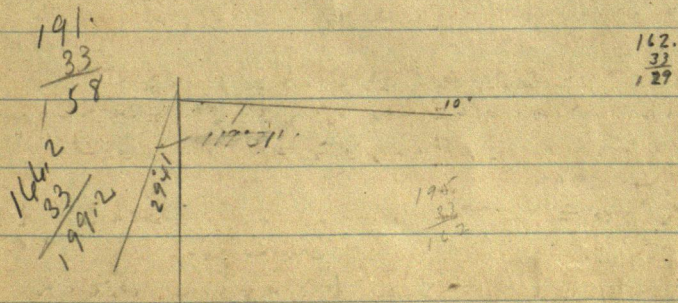
June 14-1935, Friday
 I take 2-10 PM Bus Red to Sentinel 50¢
 6 PM. Junior Beberch arrives on next Bus

June 15-1935 Sat - noon - Reed walks in
 2 PM - Reed - June and I drive to Ada Ct.
 3-15 PM at Lake Ada Town NE cor
 Lot 1 - in 2 rows 90' L. @ 33' spike
 @ 136.3 spike on hill + 30.2 = 193.5 spike
 + 115 = 205 Feet out sand Beach + 180 + 12 =
 192 to water 205 + 180 = 385 to water

From Hut 434.0 m road run N 29° 41' E
 534-634-734.

NW Bet 4-5 - @ 33.0 spike @ 162. spike on
 top @ 178. spike lower Beach @ 190 = 2.12"
 NP on line @ 175 top seawall 6 ft up
 @ 190 foot 150 from water

NW Bet Lot 7-8 = 1134
 33 - 191 - 230 - 235 seawall 250 feet
 350 water



June 23-1935 Sunday

John Ivers Bobcock and John W Cuss
 L. Jenkins 9.00 AM. Drive to Lake Ada
 Intersect EW Road with Carpenter Road
 NE SW
 Beg @ NE Cor Lot 7 - in road run
 N $29^{\circ}41'E$ 28.2 Set 2x36" pipe 2 P &
 roads Turn IP BS $529^{\circ}41'W$ Run
 90' R. N $60^{\circ}19'W$ on E of street 200 feet on
 lake shore - E street

IN @ 1062.2 NE continue N $29^{\circ}41'E$ @ 28.2
 Set Hub for SE Cor Lot 8 - in E street

@ 128.2 = 1190.4 Turn 90' L and run

N $60^{\circ}19'W$ 33.0 Hub for NE Cor Lot 8

11 Continue 185.7 from last Cor at Hub
 1062.2 @ 210 Res wall 220 and beach
 128.2

1190.4

185.7

243

219.0

Quit @ 5.10 PM.

John W Cuss

August 1-1935

Bat and I find Mr and Mrs Coaley
 at Lake Ada. Coaley helps us cut out
 brush along lake shore stake out lots

Turner Hub @ NW Cor Lot 8 (Pg 95)

BS. $560^{\circ}19'E$ Run N $17^{\circ}23'E$ - S & N stakes

8-9, 9-10, 10-11, 11-12, 12-13. Then AP.

0°53' L Run

N $16^{\circ}30'E$ 13-14, 14-15, 15-16 stakes AP.

Quit @ 3 PM drive to Jenkins

Coaley follows and pays me \$10. on
 account

Turn NW Cor Lot 8. From NE Cor Lot 8
 NE angle to Lot 13 Reads $102^{\circ}18'$

98 Aug 1-1935 contd

Town on T. Lake - West end lot

13-14 BS S 17° 28' W

Take Coaley Ice Ho 12 X 14

So corner S 68° 18' E 208.

W " S 71° 30' E 199.

N " S 73° 30' E 210.

August 10-1935 Sat

Land young Jacobs Lr Jenkins 7-30 AM

Pick up Walter F. Miller and Wilfred W.

Miller his 20 year old son. I pay \$1.10 for lunch
Jacobs @ 50¢ a day. Miller @ \$1.50 a day (8 hours)
and dinner. Pay for railings

Buy @ 2m & 2. Roads bet Lake 7-8 Plat on

Page 95 This look BS-S 29° 41' W and continue
or extend & road N 29° 41' E Set stakes &

Proposed 66 ft offset of road Lake 12

9-10, 10-11, 11-12, 12-13, 13-14, 14-15, 15-16,

16-17, 17-18, 18-19, 19-20, 20-21, 21-22.

22-23, Set 60 ft spikes and guard stakes

+ 34.5 intersect my old X line run North
parallel to and 1300 ft E of west body of
Gov Lot 3 extended

I pin at . ft on my old X line 1500
13571 North (I do not remem- 14219

-ber if this is from the E-W 13571

or a few feet N of E-W &)

X over 22-23 Turn 90° L and run
N 60° 19' W @ about 150 ft @ 300 ft

@ 313 cross Cooley's cut out road.

crossed, @ 553.2 spike 585 ft

587 ft 600 stake west brink about

650 Low 4 ft sea wall about 750

water Ada Lake.

To take top of 20 ft Hi bank

X over 587 Focus S 60° 19' E

top bears 85° R. 100 ft.

Aug 10th cont'd 1935

Cooley

99

Run $96^{\circ}20' L$ 156.7 ft to stake $N 23^{\circ}21' E$

Tower 156.7 BS on 587 Transit $N 38^{\circ}16' E$

Telescope and run $14^{\circ}55' R$ 175.0 to

stake Tower 175 BS on 156.7

Transit telescope and run

$14^{\circ}20' R$ 139.7 to stake same

$N 52^{\circ}36' E$

Course seems to continue 300 ft

Too dark here more - home @

8-15 PM -

8 to 8 - for Miller 1 hour for lunch

Leaving 11 Hours @ $20^{\circ} =$

Walter F. Miller \$ 2.20

Wilferd W. Miller 2.20

Z. Lee Jacobs .50

Find Reed at home in Jenkins

Dane no exp.

Aug 11-1935 Sunday

Reed and I alone Platting

Sto 587. R. $N 23^{\circ}21' E$ 156.7

$N 38^{\circ}16' E$ 175. $N 52^{\circ}36' E$ 139.7 + 35.7

John Ivers Babcock 16 Returns
from Grand Forks via Brament
Box Cars and hitch hike

Work in PM on Reed line for

Take Reed to Cass Lake at 11-PM

Back home 1-30 AM Monday

Aug 12-1935 Monday

1-30 AM. Find Cooley and Chum
waiting sleep till 7 AM

8 AM. Bob & I pick up Miller & Son

Find Cooley at Ada with

without dinner back to Jenkins 1-55 PM

Collect 6 Hours @ $20^{\circ} =$

\$1.20 and 1.20 for Miller's.

Cooley goes home @ 3-PM.

John W. Cooley

100.

Aug 1935

75
35
40

Cooley send some P.O. order \$35.

Bal due when completed \$40.

August 25-1935 Sunday

9-35 AM. No lunch. Reed,

Junior and John W Cooley

pick up Miller & son - 10-00 AM

Ar. π over $\&$ Run N 60° 19' W bet
 Lots 13-14 @ 33.00 set spike for cor. to
 13-14 Reg @ Lot cor chain N 60° 19' W
 266.2 spike about 4 ft E of C.N.P on line
 0° 05' R. and 0° 05' L divided plots a
 spike hub on line on top of Bank Point
 for lot stake = 292.8.

115.60
 Run $\&$ S 29° 41' W Cot of 15° 56' = 3.50 279
 Heller over 115.6 Focus N 29° 41' E ⁵³
 Turn 15° 56' and run ^{10.50 837}
 N 13° 45' E chain from cor ^{105.08 37}
 T. Lots 13-14 @ 104 set stake mhd 14-15
 Set Lot stakes every 104 feet @ 1144.0
 Stk & spike mhd 24-25 Turn 31° 15' R.
 and run N 45° E @ 103.68 x 103.68 set lot
 stakes mhd 25-26 26-27 Run
 N 60° 19' W bet Wilkie's Lots 24-25 @ 250 spike
 and stake mhd 24-25 in path on W
 Brink. work without dinner Home 4. pm
 = 6 1/2 Hours @ 20¢ = \$1.30 and \$1.30 for Miller
 2 give Miller \$1. Total pd \$4.

Cooley and Wilkie helps Wilkie delighted
 work. Lots 24 and 25 only.

Mrs Evelyn Krieg, Edward Loring Lowry
 McKnight Moly ambs

Ada Pine Beach

in Gov Lot 3. Sec 27

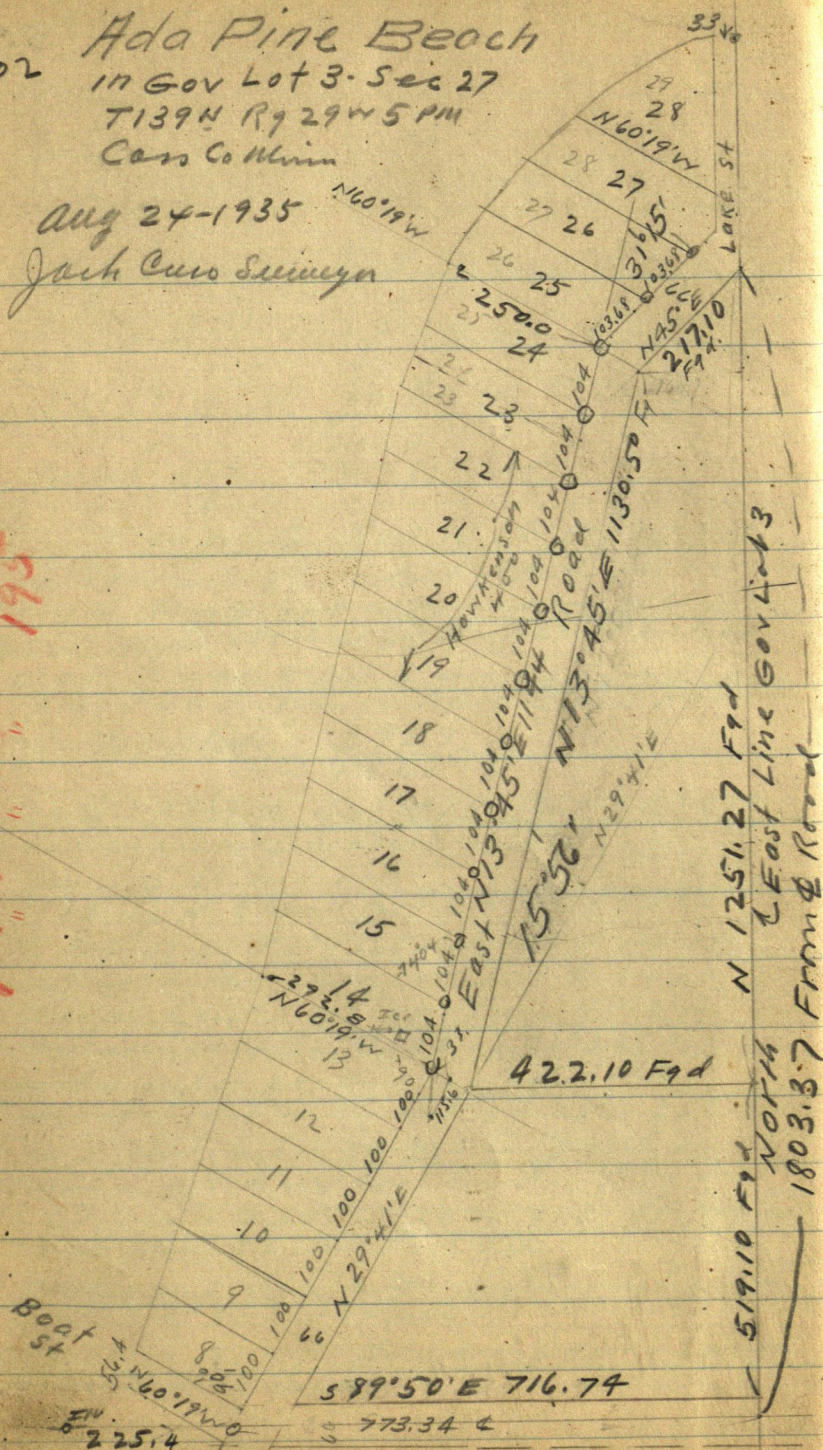
T139N R9 29W 5 PM

Cass Co Minn

Aug 24-1935

Jack Caro Seymour

Plot on Page 162
" " " 195



Book N:91

rechecked vs 85 can be

Days and Hours

Miscellaneous Cors 136-27

See 84920

S 1/4 Bet 22-23

7" Oak S. 64' W W 43.3

Tam TS 27° 30' E 62.5

V 10° from about line line
2x2x20 ash stick

N 1/4 Bet 22-23-136-27

12" JPS 59° 10' W 33.05

11" JPS 88° 25' E 91.45

10° or turned from
about line line
2x2x10" ash

X X X

Nails: Copied Nails from Road Book
Mission Twp 136-27 V17

Made 3 new BTS @ cor 28-29 32-33

N P 14 N 45 1/2 W 43 lbs

J P 3 N 34 E 103

" 45 31 E 70

" = Jas Ingram
Nov 8-1915

2330 w half

2640

3

2630

26130

16.4

43

25.8

25.8

25.29

rough line

2640.1

26.4

2613.6