

143- ~~136~~

3

Book 143

June 8-1920 John McCune & ch
Garold W. Cune ch & flg

Buy 50 I.M.S. pres scrap toilet
tube

28 pieces 2x18" scrap toilet tube

20 " 2x30 (about)

2 " 2 1/2 x 30 " "

Estimated @ 90 feet @ 1 1/2"
to the foot = 130 # @ 1" 01.30

At the SE Cor of Lot 2 1/2 x 2 Riverside
Add - Extended 20 ft into the street

Using the present street line I set
a 2 1/2 x 36" toilet tube then turn 90° and
run between Lots 1 and 2 along line
line at 24.4 NW Bains Cor of Birch
house is 14.9 L.

@ 26.2 set hub on line line 2.9 ft L of
Cement basement under Mrs
house and 2.8 Left of corner strip of house

at 50. ft cut cross in 2" plank
retaining wall at res. of Mrs
J. Pelcher's house which is 2.30 "

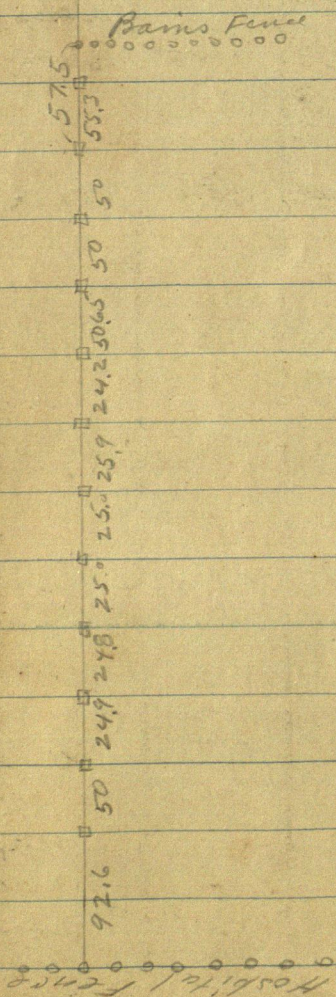
th Right 15 cement blocks under the
Bains brick at this pt is 10.6 and 14.6 Left
4' L Bains to front line is 25.7 ft
Wood Bains on B is 24.3 long

4

Bluff are

Note: This is the way I checked
the stakes set by the Aust City
Eng'rs etc

in May 1920. We ignore these
stakes



104.90
3.86
101.04

570 173.7 4.90

5

July 18-1921

Levee for Mill

105.83
4.15
101.68
5.20
106.88 4.92

Curo and Babcock - 8-am

Point B.M.	+S	H.I	-S	Elev	Grade
S end wall				100.00	
	5.83	105.83	4.15	101.68	
	5.20	106.88			
B.M.	4.90	104.90	3.86	101.04	101.04

6

16

1

17

18

17

12.5

12.5

18

19

7.0

20

69.70 chd
25 ft 2 inches

20

7.0
133.95

14-28-42-56-70-84-98-
 112-126-135.30 to curb.

50²

7
 12.6

 9-8 chain 69.7

8

Tamarack St

9

June 14-1922

Snell and I set transient
over 2m being $3\frac{1}{4}$ " iron set in
6x36" cement block which snell
has set to mark the SW Cor of the
"North 7 feet" Lot 20 B 269
call this pt A

To A Focus East 150.35 ft
16 B being @ 6x36 inch cm m m
2 inch pipe in center with nail
in cement in center of pipe

Snell says his lot is still
longer running East another 2 ft
or so to an old fence

Snell says Jim Hayes barn
must be on line as Hayes always
gets all there is coming.

We chain along S side of 7 ft strip
100 ft and set 30 spikes for line C

To A chain 69.69 ft = 69 ft 8 $\frac{1}{4}$ inches
North 16 $3\frac{1}{4}$ m set by snell for NW
Cor Lot 19 Bk 269 Snell wants
this to be "69 ft 8 inches" so I let it go
as I cannot see his end of the
chain (Tip end) call this pt D

From D chain 100 ft set spike 69 ft 8 in
N of spike C set spike E

To D run line East thru E and
set F to mark E line Lot 19.

John C. Dyer

10 Sept 15-1923

Working for Neil O'Brien
Bluff Ave

I call Margaret Johnson 6-30
and she wakes George

I drive to Neil's House where
he shows me small ones set by
Louis Knudsen -

Cimbar? Comes later and also
shows me same ones

I go get Geo Johnson about 7-50
and we take Margaret to Ct Ho

Geo and I beg @ my old stone
mon on Bluff

Dec 26-1923

working for First State Bank

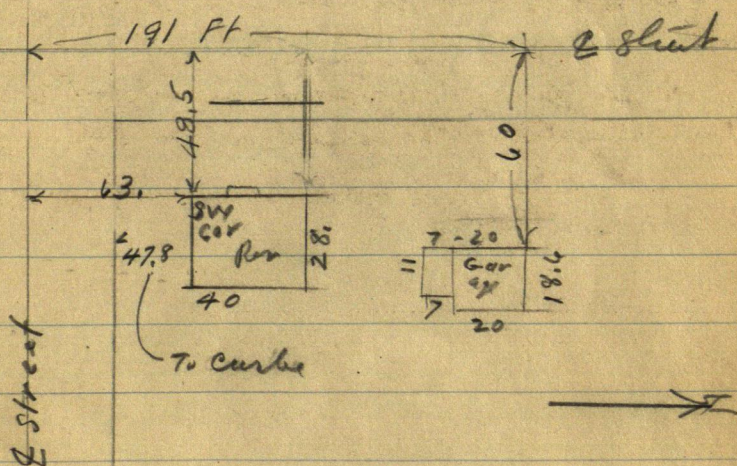
Jahm L. Brown and J W Curo

Block 172 - W 50 ft Lats

19 T. 24

St. Joseph
Hospital

Sinner's new Res.
Rough chain for insurance
purpose



Main Bldg: SW Cor To Curve 47.8'

" " " To E Street 63.0

40' N x S By 28' E-W

Sticks

SW Cor - W 16 E Street is 48.5 - 30.6 To Curve

GW

Garage's Cement Blocker 18.6 X 20. N.S.

Board post 7x11

See also CW Coring 26 acres to be platted
in 1. acre lots @ 8250 - art. Koop

over

(12)

Smraker Bldg on
W 50' of Lots 12 to 24
Block 172. Orig Town
of Brainerd

Midwest Holding Co
342-346 Minnesota St
Saint Paul Minn

13

① Continued
From Book 156

SHADYWOOD SHORES

Postlewait

Staking the plat

March 1929

Bert drives down from Pine River and says snow is down and that we might stake out Shadywood shores

March 1929

I write H. B. Postlewait 9/10
Midwest Holding Co
Midland Trust Co. 342-346
Minneapolis Street St Paul and tell him we can probably stake out the plat in 10 days but that I will take orders from him only

On March 18-1929 Mr Postlewait writes me to go ahead with the survey and that my bill and Michener's bill will be paid

March 1929 I write Michener A.P.R.

March 1929 Bert calls and we arrange to start Monday March 25

March 25-1929 Monday

10 am I call But Michener at
Pine River and tell him to wait
for me till 3 PM

I then look up old notes drive
to Piquet & back home at home
PM

Gather up survey outfit and
drive to Pine River @ 2-15 PM
But has the supplies bait and

Michener and his Ford Coop - I and
my old Ford ~~to~~ to Pine River
3 PM and drive to Hand Lake
Camp where we fix up for night
Nati! -

Yesterday Sunday March 24-
Michener drove out here and
straightened out the camp.

Supper at camp - some one has
stolen our Pancake griddle
we drive to H.B. Kenna Bar
and arrange for him to come help us
we also borrow a griddle.

At Smith's store we buy 1 # Lard
2 # Butter \$1.19 ?

over nati at camp

March 26-1929 Tues

Clear bright sun - warm.

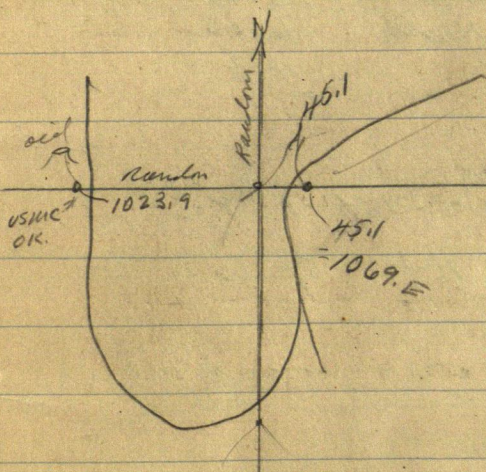
Mecher and I walk $3\frac{1}{4}$ miles

so on ice where we find H.B.

"Bud" Kinnis

I walk 80 rods so and tell Mrs.
Siltman to send Kerley after dinner

Continued From Page 66-Book 136



Beg@ spike 45.1 E of IP of Random lines
45.1 is 1069 E of USMC.

This VIZ

JP 10 N about 85° E 49.5 (Trimmed up)

NP 15 N " 5° W 14.9 Blazed

$45.1 + 116.3 = 161.4$ spike hub on hill

WP Stump 24 N about 85° E 19.8

aah 3 S " 5° E 6.8

continues

Foot

(16)

(4)

March 26 - 1929 continued

East Bet 14-23 T139-29

Continued from

Page 66 Book 156

$161.4 + 300 = 461.4 + 300 = 761.4$ stakes
 $+ 83.6 = 845 = \text{Hub} = \text{spike in top}$
 of Burned 12" pine stump 3 ft h
 $761.4 + 300 = 1061.4$ stake $+ 300 =$
 1361.4 stake $1367 = \text{old crosshead}$
 road N-S

$1361.4 + 11.4 = 1372.8$ spike
 Hub 3 ft E of E wheel bench
 Ties V12

Old stake about North 15.60

JP10 " North 6.10

JP12 N about 85° E 4.3

light spots

1372.8 Continues

East on So side 14-139-29

Random

$174.9 = 1547.7$ Hub = spike under
 Transit

all walk to our camp where
 Kinnel takes dinner lunch
 I + Michener

P.M.

Walk So over lake - meet

Curbie Siltman

Continues

$\text{East } 1547.7 + 274.7 =$
 1822.4 East Hub = spike in
 So half of green 8" x p stump

@ 2075 Foot of slope - enli
low land N 70° W S 70° E
 $1822.4 + 350 = 2122.4$ stake
2150 E enli swamp S 70° E
N 70° W $2122.4 + 277.6 =$

2400 Stake in swamp
 $+ 350 = 2750$ 2750 LV Swamp
NW - SE $2700 + 166.1 =$

2866.10 Hub spike on ridge
2940 Foot of ridge NW - SE
enli low land

3050 enli swamp LV alder
about river wet
outflow

$2866.1 + 300 = 3166.1$ stake

on iron cat tails $+ 54.2$

3220.3 stake on iron in river
NW SE $+ 194 = 3414.30$

stake over River

in meadow .50 above
water level 50 ft E of
open water

No bank any place

Meadow grass about

one foot up in rock 100 ft

$3414.3 + 150 = 3565$ E

in meadow $3414.3 + 200 =$

3614.3 Foot of hill N E SW

$3414.3 + 220 = 3634.3$

point in mid hill $+ 154.6 =$

3788.9 Hub in field

3788.9 Hub + 11.1 = 3800 Hub
+ 150 = 3950 foot of slope

even Cranberry bog 2-8

3800 + 300 = 4100 stake at

boy 4400 in boy

4700 in boy

5000 in " + 160 =

5160 stake in meadow

Foot of slope

5100 + 71 = 5171 Hub in

Ridge I m seen

13-14-23-24-139-29

bears S $22^{\circ} 55' W$ 104.80

Nat: Kinne and Siltman

LV @ 6 pm. Bert and I

stay till dark to tie in this

corner Siltman get in

5 hours @ $30^{\circ} = 81.50$

Kinne one day 3.00

Whitman get 84. a day flat & bores

Bert and I staying alone at Shack
on 2 sides Head Lake in lot

⑦

19

March 27-1929

Wednesday

Kinne arrives at 8 AM. I figure
a few corrections and we all
walk SE over ice. Pick up
Silliman and my transit on
Pine Point and walk half
a mile SE to stake 34508
on E longitude 6

South Bet 13-14-139-29

Correction

Page 69-70-71-83 Book 15C

Correction = .008238 + 13.51 E

3400-S-We chain E ^{40.57} 41.52 ^{0.95} changed

Set picket on True line E Boley

14-139-29

Silliman walks N to 1/4 cor and
cuts line

South on line line 13-14

Kinne-Mickens & I walk

So and put in

S 1/16 bet 13-14-139-29

@ 4000 S ch 20 69.97 then

East 90° to longitude and set
40 ft spike and red patch in
Swamp for

True S 1/16 Bet 13-14-139-29

Polar 2 N about 45° E 27.10

" 4 S " 80° E 64.50

3 East

53.50

20

(8)

March 27-1929 continued

Turn random strike 4069.97 S Frac Non
random Turn 90° to random and run
East 46.09 to line

S 1/16 Cor bet 13-14-139-29

Transit telescopes and run
West 90° to random on S 1/16 line 14.
But walks west into pickets then walk
north to help Curbie Sullivan cut

South on line line bet 13-14.

I find that stake 3400 S sets a foot or
more too far E as I only figured this
roughly. Crew cut
West on S 1/16 I walk north alone
and

Figure Correction for	3400.
	115
3400 S = 3285 S	3285
Correction .008238 + 13.51 E	
See Page 109 Book 156 also 83 Book 156	

South Bet 13-14-139-29

See Book 156 Page

43-44-45-51-53-57-61-68-69-70

71-72-75-76-77-85-86-87-88-91-92-93

94-98-114 Book 156.

3400 S = 3285 (roughly) and goes E

	41.52	8238
I walk and	40.52	3285
set stake 3400 S	.95	41190
		65904
West 0.95 to 40.52		10476
		24714
E of random		27061830
40.52 set picket on		1351
True Sec line bet		40.57
13-14-		

Cut line West and go to camp
for dinner Buck eats with Bert
and I. Curley took his lunch
and eats on line.

pm

West on Random S-1/16 line

Sec 14-139-29

46.09 spike on random +
186.41

232.50 stake on ridge

200 L. by 232.5 spike on
ridge in line 100 v

250 culis swamp

232.5 + 300 = 532.50

832.5 stake on 10 ft N of solid
land

900 edge of swamp + solid land

832.5 + 300 = 1132.5 stake

20 ft N of solid land

1235 L. swamp 6 x line 20 50 ft
and run NW

1132.50 + 260.50 = 1393.00

Hub spike + 59.80

1452.80 W

Spike in 2 green

Buck slugs north stump

1452.80 + 240 =

240

1692.80 stake + 168.7

168.70

1861.50 Hub spike + 199.5

199.50

2061.00 Hub-spike on hill

50- or 60 ft E of Lake

22

(10)

Kinne and Siltman cut shore
line while Bert and I go to
camp 5-30 I go home
to Jenkins

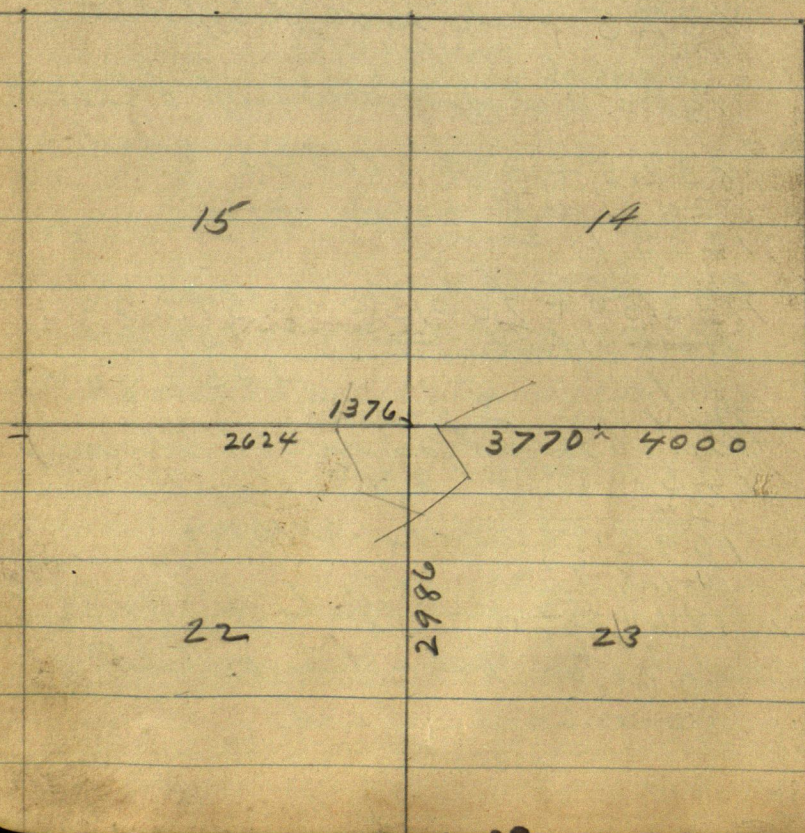
March 28-1929

Thursday

Crew laid off

I work in office and get
field notes Bert stays at camp and
cuts shore line

139-29



March 29-1929 Friday

Alma - Reed and I drive to camp @ 8-25 am.
 Find Krime and Michener. Carbis comes on
 in a few minutes later he cannot get ashore
 because it is out along a shore. Heavy wind
 decide not to work. I allow crew 1/2 day

Alma - Reed and I drive back home to Jenkins
 Krime rides with alma and I
 Then I change and ride with Michener to
 Pine River where Alma Reed & I go home
 to Jenkins. Michener stays in Pine River

March 30-1929 Saturday

I work in office - write Michener
 Michener calls at Jenkins office enroute
 home to Pine River
 we agree to start again Monday

March 31

March 31-1929 Sunday

24

(12)

April 1-1929 Monday

April Fools Day

Mike and Reed

Fix tube in Walton's trailer wheel

I work in office

Mike eats dinner with us

P.M.

The boys load trailer and @

3.P.M. Lv Jenkins for Pine River
where we pick up Bert Michener
and his Ford Coop and we
drive to our camp on a shore of
Hend Lake

Mike and Reed walk half a mile
back and put brush in mud holes

I walk half a mil. East and
straight up red flag @ Sta 10.
See Page 93 Back 156.

Bert Michener cleans up cabin
and gets supper

Mike and Reed sleep on floor

(13)

April 2-1929 Tuesday

25-

Take both cars --- Mike-Reed
and I in my car drive West
South and East. to point 20 of
Hend Lake and stait lines

One hour later Bert follows
with his car and our lunch

π over sta (34)

(Page 96-104 Book 156)

BS N 40° 14' E on Sta 10 + run
S 7° 0' W on West side of

Point Landing

Point Landing ~~Street~~

@ 90 ft spike on ridge E-W + 60-
150 set 40 d spike for

SECOR Lat 62 (62)

π @ sta (34) BS S 7° W Turn 90 L
33 ft set spike on E side of
Point Landing Street

π over spike 90 Focus S 7° W
Turn 90 L 33 ft set another
spike on E side of stait ^{Point} Landing

π over SECOR Lat 62 (62) = H 150
Focus N 7° E on Hut 90 Turn 90 R
33 ft set spike on E side of stait

POINT LANDING

π over Hut 150 = SECOR Lat 62

Focus N 7° E on Hut 90 and run
S 58° E 36.5 set spike =

SECOR Lat Lat 61

(26)

14

From SECOR Lat 61

continues $858^{\circ}E$ 66 ft set spike
for Cor to Lat 60 and 61
 $+66 = 132$ set spike =

Cor to Lat 59 and 60

Angle point N. side ^{EAST SHORE} DRIVE st

Turn SECOR Lat 62 on

$N 58^{\circ}W$ 100 ft set spike

Walk to half a mile to car where
we cook coffee for drink.

PM

Mike and Reed walk north and
work on above work

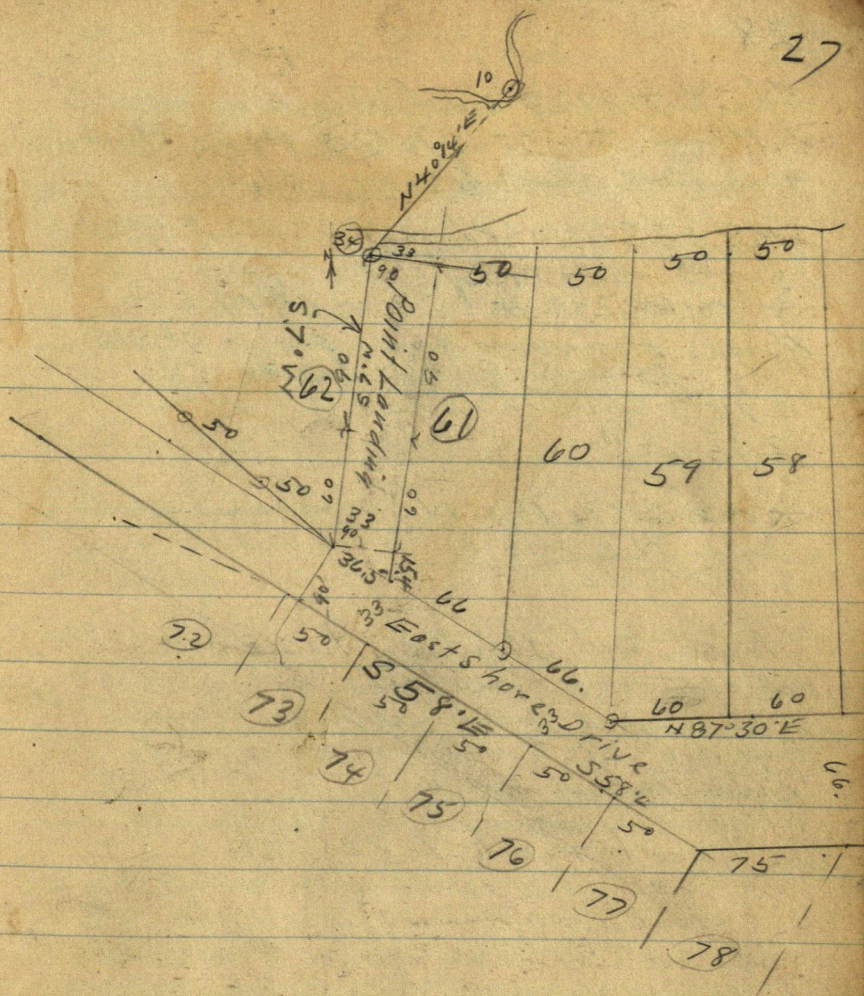
Michigan and I in his car drive
 E and SE also NE to hunt
a shark to camp in

Roads too rough to drive around

Turn SECOR Lat 62 Four

$558^{\circ}E$ Turn $90^{\circ}R$ 33 ft to the

Hub Cor to (72-73) Angle point on so
side East Shore Drive



28

April 2-1929 continued
Pack T to Sta (30) Page 96-
and 104 Book 156

BS on Sta 10 (Page 91-93 Book 96 Book
156) B BSN $14^{\circ}31'E$ and run
S $30^{\circ}E$ 282 to Cor 48-49 =

Angle Point used
East Shore drives

@ 78.38 ft on ridge @ 203.7-
282. A.P.

Turn 282 BS N $30^{\circ}W$ and shift
a line N $54^{\circ}15'E$ and another line
S $87^{\circ}30'W$

Reed and Bert go home at
5-25 - in Bert's car
Mike and I work an hour longer
and @ 6-28 quit and walk half
mile to my Ford

at home to shack 7-30 PM

April 3-1929 Wed

29

all 4 take my car and
our lunch box and drive to
So side Hand Lake about 10.
miles of bad road. Lv Car and
walk a mile north

Find Reed and Mike at sta-
282.

We bring along the
Heller & Brightly for Bert & I
Mike and Reed using the
Gurley

Pack both mammals to (23)

BS on S 1/10 N $32^{\circ}47'$ W + cut line
S $61^{\circ}10'$ E

Pack X to Hut 819.4 W of 1/4
on on E-W & Sec 1X-139-29

Run

N $88^{\circ}33'$ W on Tm & Sec 1X

30.20 ft set Hut 849.6 W

all walk over lake on ice at
Point at Sta 10. eat at shack

Reed is poorly sick and
stays at camp

PM

Mike and I to Bert follow a few
mammals lake

30

π over 849.6 W Focus N 88.33° W
on line line and run
North 34. set Hub for Cor to
Lats 31-32 on W Side of
Lake Shore Drive

@ 284. N set Hub 4 Point
bet Lats 26 and 27.
Rake in all lats and set hubs
every 50 ft ~~at~~ From sta
849.6 W chain

South 16 ft set hub SEC or
Lat 32 = N side Boat St

~~From Cor T~~ set π 34 ft N
over Cor 31-32 Focus
North 250 ft on π P Cor 26-27
Tum "61° 10' W to flag @ old
sta "23" = Cor to 31-32 on
Lake shore

From Sta 23 = Cor To
31 and 32 on Lake shore chain
S 10° 10' W 50 Feet and set
SW Cor Lat 32 = N Side.

Boat Street

π over SEC or Lat 32 Extended
138 North and run
N 61° 47' W along
North Side of Boat Street
To Hand Lake

Apr 3rd continued

31

Then SECOR Lat 32 extended

(Round Corner on Lat 32)

set a line of stakes South to
intersect. NECOR 33 extended

(Round Corner Lat 33 also)

All walk in my car and find forest fire
in grass. Some one has moved
my car over onto burned over
land. Reed is alone at camp

I and my car with Bert and Mike
stop at Curbie Sittman farm and he
promises to help us to-morrow

We 3. stop at Innick's store where
I pay \$1.93 for supplies

Meet Reed on road near camp
and take him back

As at camp after dark.

Time Sheet - Shadywood Shores - For H.B. Postlewaite

March 1929

25	26	27	28	29	30	31	SUN
----	----	----	----	----	----	----	-----

April

3	2	1
---	---	---

45

13

25

John W. Curo
Q 815. x Ex. Penses

Col

Bert Michener

Cor

Reed Curo

H.B. Kinne⁸³

304 am Howe
curbie Siltman

Curbie's Team

Earl Schultze

110

10

Stör m

$$3\frac{3}{4}e^3 = 9.75$$

300 am, Horse
curbie S. 1/2

Curbie's Team

5-18-14

April cont'd

DATE	DESCRIPTION	AMOUNT	BALANCE
15	16	17	18
19	20	21	22
23	24	25	26
27	28	29	30

John W. Curo

60

又四

Bertwichener

20

Earl Schultze

Curbia Siltman

Tecum

$$=6+9 = 15 @ \textcircled{8} 2,x =$$

 $= 4\frac{1}{2} + 7 = 11\frac{1}{2}$
 $\textcircled{8} 2,x = 27.60$

55

April 4-1929 Thursday

I and my car with Mike and Reed
 to camp @ 8-0m. Fix mud holes
 Pick up H.B. Kinne and his lunch
 Pick up also Corbi Siltman and
 Cut line

Bert Machener washes up our dishes
 takes his Ford Coop and our trailer
 and goes to Pine River where he
 gets lumber for stakes also paint

Bert tries to get Big link from
 Tom Etheridge but cant
 Bert eats dinner in Pine River?
 No - he had no dinner

Corbi - Kinne - Schutts - Reed
 and I cook our coffee on so side of
 Hand Lake

P.M.

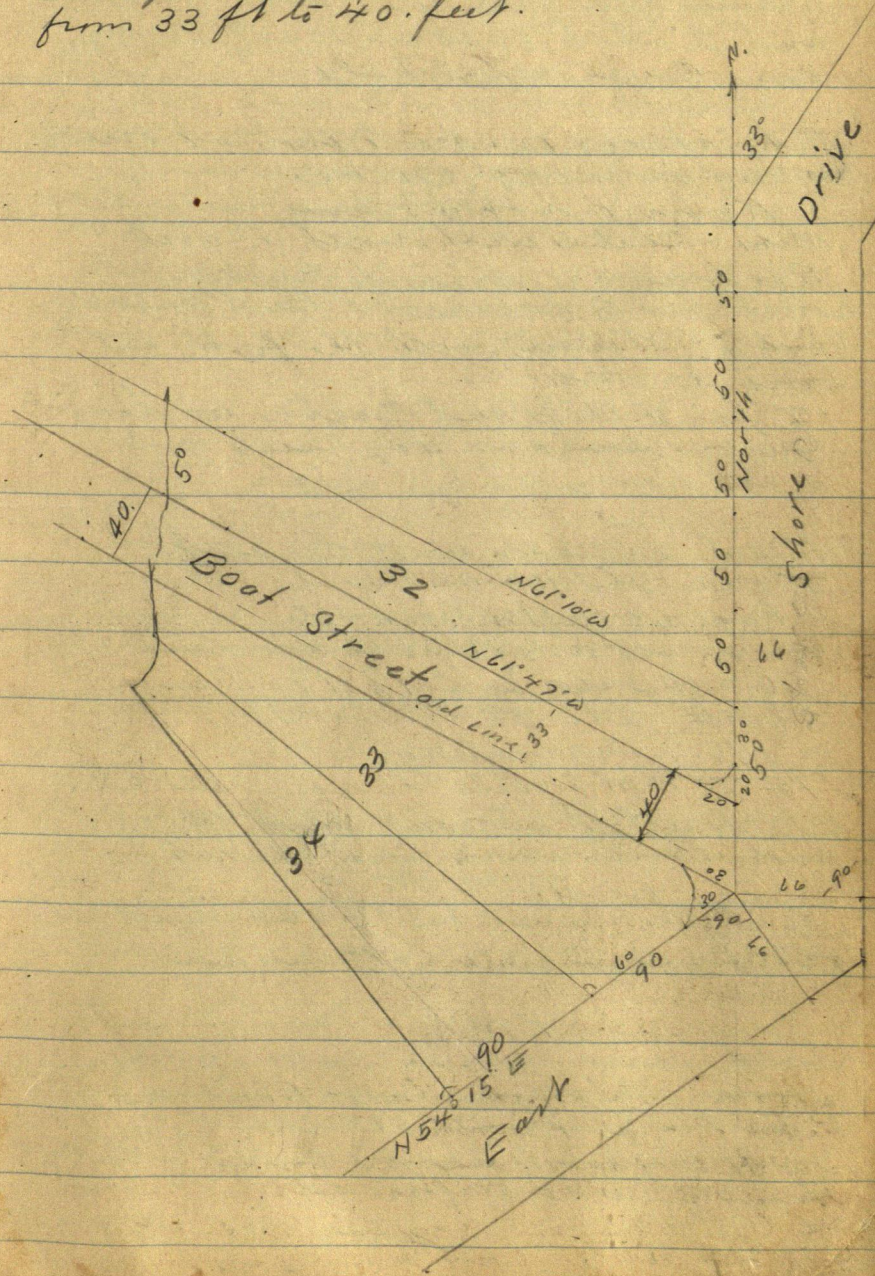
Bert gets stuck in mud and at
 1-P.M. finds us on line.

Corbi goes with Bert and with
 Corbi's team they haul the
 starter and lumber out of Corbi's
 farm after which Bert and
 Corbi drive with team to our camp
 and move our supplies to new place.

Richard "Dick" Roberts farm
 Bookar - Tel to Bookar -

Kinne walks home. No more work too
 far to walk. We find Bert's car stuck in mud
 Corbi hauls it out. Our first mile at
 Roberts house. Cook our own grub

Kirns - Mike - Reed and I work
 on line
 Change width of Boot Street
 change width of Boot Street 40.2
 from 33 ft to 40. feet.



April 5-1929 Friday

Best cooking at Roberts house
Roberts eats with us. Mike - Reed
and I walk 80 rods west to my
car Over mud hole

Mike spears our first fish at Bridge
where we meet Curbie

Kimre not working
Mike & Curbie walk north to work
Reed and I drive to Curbie's
house get 3 suckers - Reed drives
back to Roberts with the fish and
back to work

I find Mike and Curbie working
Curbie looks at Hay Creek gets
a sucker with his axe

Reed arrives and we set
T over Sta 16 - old Map.

Page 68 and 101 Book 156
BS on Sta 10 S 86° 08' W and run
(16) = West on Lats 18-19 Run
S 60° E 212 ft to E cor 18-19

@ 186.7 Hubon ridge

10-45 AM Starts to rain we cover
the Quailie Transit with cloth
and Buck back and beat it for
home at 11-30

Buck has moved his car over mud hole
& cooks our dinner - Heavy rain

PM

Cold rain - Grind axes carry
wood Fix mud hole - Reed and
I @ 6-PM go to work with old road 1/2 mile
NW to Hay Creek see one sucker
Heavy rain Home after dark

212
186.7
23.3

April 6-1929 Saturday

8 AM. Cold NW Wind Bright
cloudy I call Curbie who will
meet us on survey and I go at once
with Reed and Mike

We cut thro the woods NW

Hit survey line in swamp at
so side of East arm at mouth of
Hay Creek then up hill to line

Curbie arrives and with

T over Hat 186.7 Continues

S 60° E 25.3 T. 212. set Hat

SE End of Lake

West side. Stick

Michener washes dishes - goes
west and fixes the road then
comes out on line and helps
cut brush till 11-00 then walks
home to cook dinner.

11-30 AM Reed and Mike go for
dinner via road and to pick
up Heller & Brightly
Brightly Transit

11-40 AM I go for dinner via

Hay Creek - colder - no fish in creek
PM.

Mike and I chain from Hat 212 SW T.
cor 26-27 at crook. Distance 7 ft short
so that 212 will have to go 7 ft further NE
But L's camp taken higher to sheet and
boulders in our stream

38

April 6-1929 continued
P.M.

Michener and our trailer driver to
our old camp on N side of Hamel Lake
Takes bath stones and all that is left
there and hauls it to Pine River
we work till 5 PM walk to camp
for some of our things. Find camp looked
Richard "Dick" Roberts arrives
shortly with his key - unlocks his camp
and says hereafter he will leave one
key under a big stone near door slip

Reed - Mike and I L. for home

25 wild Geese in Racco Lake

I felt a few pistol shots among them
and only knocked out one big white
feather

At Pine River we find our trailer
loaded at Michener residence

We like trailer home to Jenkins
Mike stays home

Michener home in Pine River
No one at camp

Sunday April 7- 1929

Three auto loads of buyers call on
Michener at Pine River but he turns
them back to St Paul as roads are
too rough to get to E side of Hamel Lake
I stay home all day in Jenkins

April 8-1929

39

Monday:

Reed starts back to school
Mike Schutty and I L. Jenkins
I call Bert Michener before leaving
but Schiffer says he took his car out
early and is probably out at camp

Mike and I pull straight for camp
Find Dick Roberts the owner but
Bert has not arrived

I call Shiffers Garage at Pine River
via Backus and tell them to
let Bert know I am on the job

Mike and I go out on line where
we find Cubbie Sittman calling
the big Round Turn on top of

Hill Park

736-37-38

From 212 BS S32°11'W on W side

East shore Dism

Chain N32°11'E

50 ft Spik Tamp cor L 17-18

+20 To approximate point for cross

+7.

From 212 chain N32°11'E 287 ft

Turn 287 Turn 90° R. 66 ft to Hub and

L 9 ft set Hub for Q. Park

Continue L 9 x 75 = 784 Hub

Michener arrives shortly and helps us

April 9-1929 Tuesday

Michener-Schultze and Siltman
cut lines laid out by me. work all day

I drive to Jenkins -- figure angles
and telephone--

Call H. B. Postlewaite at Midwest
Holding Co office 342-346 Minnesota
Street St Paul. He says he can
send no money unless I submit
a written bill and to send it
with a letter to

Midwest Holding Co and Not to him
(Not to Postlewaite)

I make out a bill of my time up to Saturday
into April 10-1929 = 18 days

Michener bill also 10.00

Postlewaite call

I also call
Suburban Investment Co
512 Midland Trust Bldg 6th and
Wabasha Sts St Paul

Call Cedar 3013 Eicher
Emil Fiesel Barr or

M. W. H. Rippberger Sales mgr
2 pm.

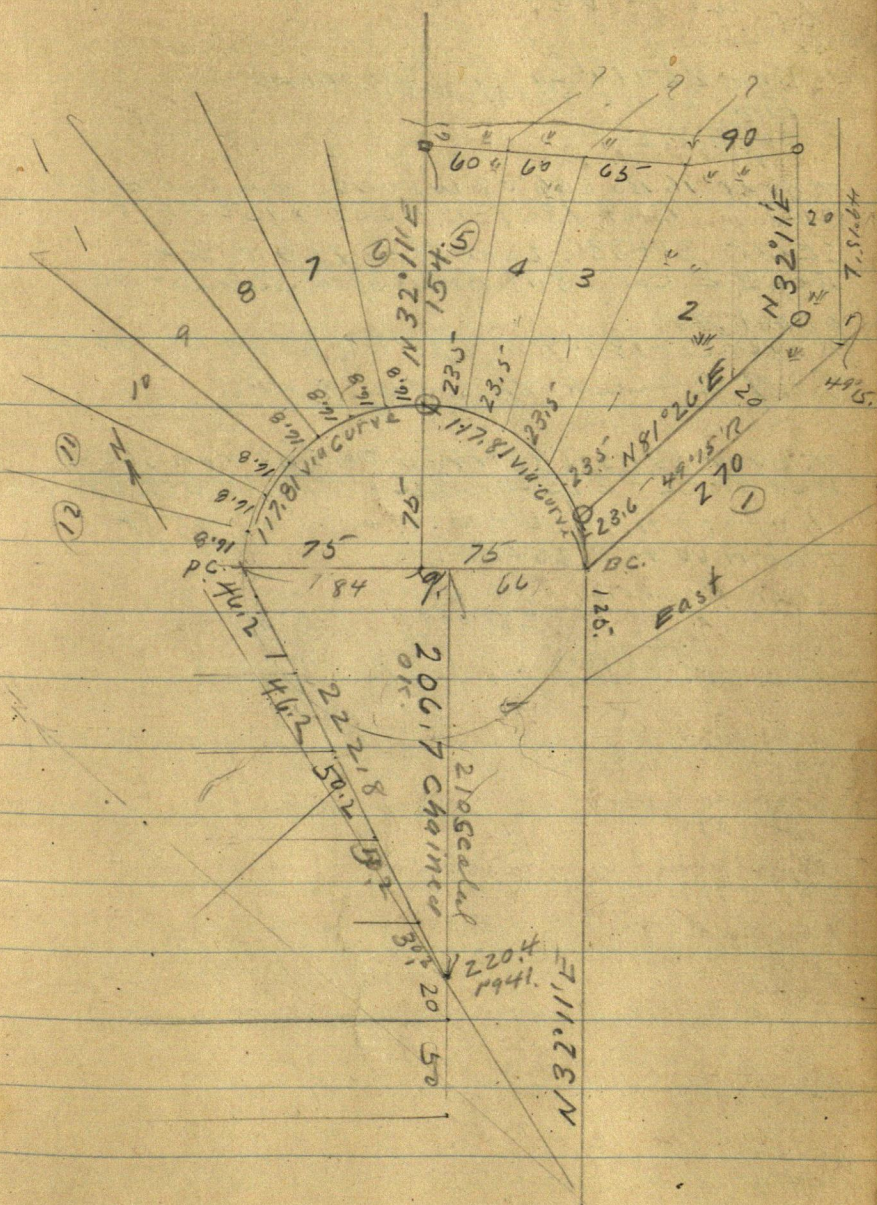
Rippberger answers phone and I tell
him I may be down Saturday morn-
and will build his road. He says "good!"

Postlewaite Tel \$1.40

Rippberger Tel $\frac{1.05}{\$2.45}$ pd to Mathis Curo

I also call Dick Roberts via Becker
to answer them call

Mrs Curtis Sullivan via Becker
20 x pd.



42

April 9-1929 Tuesday
continued

Dec 23-1931

Find Loose Sheets in this book
copy viz.T over 16 BS S 86° 08' W on 10. RUN S 60° E 210
(212) Bet 18-19 - run S 33° V 150 FT 15

SE cor 21+33 Lake St + 250 to 2P

Beg @ E cor 18-19 RUN N 33° E 30 + 20 = 70
about A.P.T over cor 18-19 RUN N 33° E 280 FT 15 P 9 FT
E) of & creek then 90° L 9 FTT over 23 BS N 32° 14' W on line run S 60° E
Bet 31-32 - 325 - or - 326 T over 819.4 W
ch W 127' N 30.60 to 850. Then W? 35' //
Then N 60° W 3.25 ft to (23)

Dick Roberts 2805 chd

9' @ 4. 287 chd

Hill Park

20 50

212

21'48"

43

Tang = 04

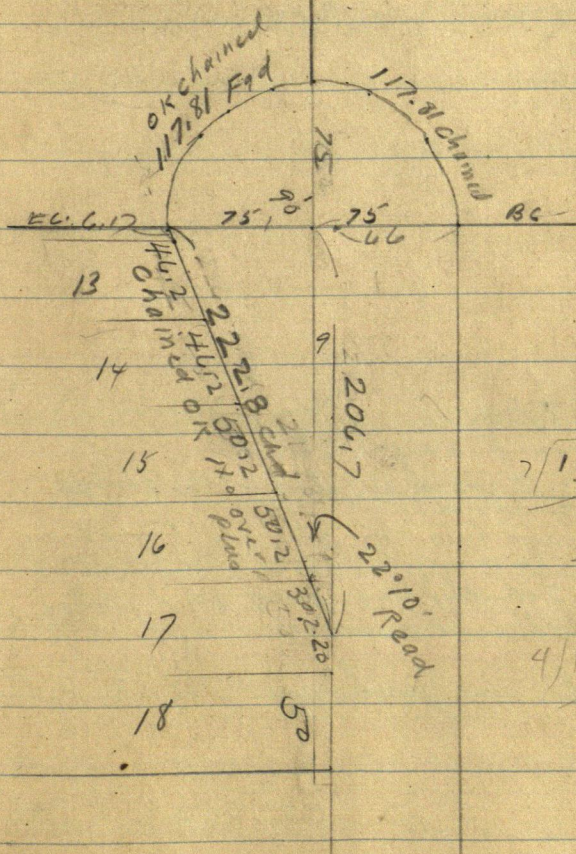
" = 39997

Sine = 37137

Cos 92849 x 210

= 226.174

6 5



16.83
7/117.81
7
47
47
58

293
4/117.81
8
37
38
18

44

April 10 Wed

I L^v Jenkins early in my car.
Curbie - Michener - Schultze cut lime in
am - start 1. paint stakes. & figure angles

Curbie and his team with Mike fix
mud holes - Bert and I chain & work
on big Circle - cover Transit well
as big storm is coming

April 11 Thurs

Howling snow storm

Bert coaks - I work on plat - Too stormy

Schultze gets wood

Michener and his car goes to P. M. K. R. R.

Schultze and I in my car follow

We pick up Schultze big lent and poles
and take them home

Over rule in Jenkins

April 15-1929 Monday

H A Krostoe (Herman)

called at my office in Senhain

Rents the Knutson house home

@ \$100. for this year. He also
rents the plow land and pasture
to Benson for fencing the place

Earl Schultze and I in my
Ford to Senhain @ 9 AM.

Pick up Bert Michener who
has but some camp supplies at
Pine River and we all go in
my car to Hand Lake at our
camp in the Dick Roberts Rex

I figure nails while ~~the~~

Earl cuts wood and Bert gets
dinner

PM

all three work on survey at
Hill Park

Figuring Old Survey Stations viz

Sta 7 - sets 16.2 Ft West of NE Cor Lot 6.

Lot 6 to Sta 7 = 16.30 Ft

7 to 9 = 229.10

9 " 13 = 120.00

13 to 14 = 100.50

14 to 15 = 74.60

15 to 16 = 174.50

Total 715.00

Sta 16 = SW Cor Lot 18.

715.00

We need Total 655 Feet

655

We Have 60 Feet over for 12 Lbs

60

Nat. Lot is already 55 Ft

This will make each lot 55 ft
instead of 50 ft

47

Figuring old Survey Stations viz

Sta 16 To 17	=	127.20
17 " 18	=	102.60
18 " 19	=	38.50
19 " 20	=	172.00
20 " 22	=	114.50
22 " 23	=	137.90
-- Total		<u>692.70</u>

Changing Measurements:

Note we Chain Lots and set stakes

as shown on Page 41

Lots 1 To 6 - inc

April 16-1929 Tuesday
cloudy and rain

Schultz and I to Camp
Michigan follow later without
lunch

Curbie Sittman and his team
hailed on stakes timber onto the
ground

1/4 day each for Curbie and his team
Curbie works his team on road grading
9 to 12 am

Bert carries stakes

Mich and I Beg @ REC or Lot 6 ch
N W in line with No 9

@ 16.2 pm line and sta 7

@ 55.1 stake bet Lot 6-7

water 14 FR

@ 110.2 stake bet Lot 7-8 water 12' R

@ 165.3 " " " 8-9 " 15 R

@ 220.4 " " " 9-10 " 15' R.

@ 245.5 intersect old Sta 9.

Nat. We do not pass thro Sta 9-

But Round off this cor

We chain across point on Lot 10

to pt on line bet old Sta 9 & 13,

55.1 feet set stk bet 10-11 corner

about 5 ft N of line up and

Sta 9 and 13. Water 5' R.

Thence toward old Sta 13

@ 55.10 set stake bet Lot 11-12

Water 7. ft R. 27.7 T. Sta (13)

11-12 chain 55.10 to pt on line bet
old Sta 13-14. Set stk for Lot 12-13

Water 6' R.

From 13-14 Chain S W

55.10 set stake bet Lot 13-14

Round off alcl sta 14

From slat. Bet 13-14 ch
55.10 set state for Lat 14-15
Water 8 ft R. in line with
alcl sta 15

Round off old slo 15

From Lat 14-15 ch 55.10 T.
Ptn line bet Sta 15-16
Water 8 ft R.

From cor lat 15-16 ch

on line bet Sta 15-16 -

@ 55.10 T. Cor Lat 15-16-17

Water 8 ft R.

From 16-17 ch

S

E or W -

50.30 called 50.2" T.

cor 17-18 Water 8 ft R.

17-18 ch 50.3 called

50.2 T. Cor Lat 18-19

Water 12 ft R.

Note Cor of Lat 18-19 =

Old Sta N = 16

Note: Lat 6 To 16 line is 55.10

called 55.0

Lat 17-18 are 50.3

called 50.2"

From old Station 16 ch

S

W

thru 17

Stations 17-18 and 19

@ 50.3 - 100.6 - 150.9 set

slates Lat called 50.2"

50

@ Lots 19-20 water 6 ft R

@ " 20-21 " 4 " R

@ Cor 21 = N side street
water 15 ft R

X over SW Cor Lot 1 BSN $32^{\circ}11'E$
Run East on S side Lot 1
set Picket on top of hill about 100 ft
E. and a back shot 50 ft W
Nat. Curbs will cut this out
Pach liant SW.

X over 212 Run in West side
East Shore Drive

Begin @ Angle Point Cor to
Lots 26 and 27 chain
 $N 32^{\circ}11'E$

@ 50.1 - 100.2 - 150.3 - 200.4 -
250.5 stake ft in blank =
NE Cor Lot = S side
Lake Street

Lake St 33.2 on E End
 $250.5 + 33.3 = 283.8$
Stake = SE Cor Lot 21
N Side Lake Street

Begin @ SE Cor 21 Ch $N 32^{\circ}11'E$
@ 30 ft set stake End of curve
@ 50.1 - 100.2 - 150.3 stake 7.3 N of
Hub 212
@ 200.4 stake bet Lots 17-18
+ 20.0 - 220.4 Angle Pt in Lot 17
Hub

From Hub 220.4 chain N 32° 11' E

@ 206.7 Hub Then 90° W 9 ft

To Hub in center of Park

@ $9 + 75 = 84$ Hub VY Edge of Park

From Hub 84 chain 222.8

To Hub 220.4

(52)

April 17-1929 Wed

Up at 5.00 AM - at 7 AM -

Schultz and I are on the work
long walk - Michener follows
shortly also Curbie Sillman

Sillman cuts So line of Lot 1

East

Michener makes and distributes
distributors stakes

Schultz and I set stakes

Correcting

L. vs Bet Lats 18 and 19

at 212 E Cor sets L. 7.3

$$212) 7.3 = .344 \times 186.7 = 6.43$$

Hub 186.7 (Page 36) we set L. 6.43
set stake marked "True Line" bet
Lats 18-19

We number and set stakes

Lat 1 T. 33 along East shore Durr
Pg 41-43.

Figuring See Page 47

S Side Boat St

$$To Sta 19 = 81.0$$

$$19 To 20 = 172.0$$

$$20 To 22 = 114.5$$

$$22 " 23 = 137.9$$

$$\underline{505.4}$$

$$\underline{500.0}$$

$$\text{And we want } \underline{5.4}$$

Leaving us 5.4 for crooks & "sech"

We decide to make Lab

22 To 32 Tie along lake 50.1
called '50' and to throw the 5.4
into the West end of Lake Street

LAKE ST 38 wide on West end

Bay @ Sta 23 = SWCOR Lot 31 Channel
along lake shore 50.1 - 100.2 - 150.3 -

200.4 - 250.5 - 300.6 - 350.7 - 400.8
450.9 - 501.0 Note

We still have 1.3 ft over which we

throw into West end of Lake St

Making A34.3 on W End and 33 on E End

Corbie cuts Line along N side of Bay

on S end of Lot 33 To 50

Michener goes to camp to bring
out our lunch @ 10.30 AM.

Mike and I set and mark stakes

22 To 30 along shore not painted

Channing so side Lot 21

From Hut at PC. 20 ft W of IP

Chan ~ 60° W on line line

@ 123.4 Stake on Brown Dam

@ 231.6 Pt for IM under T

= Black Corner

231.6 + 10.7 = 242.3 Birch

Stake on lake shore 3 ft from

water = ~ Side Lake St

Extended.

Pt for IM on S Side Lake St

4 ft from water bear

554° W 41.8 from Pt for IM

under train

Stake on S Birch stake on seawall

~ 60° W 10.7

Curbie corner and curb

line on so side Lake St

54

April 17 1929 continued
We first find 5 ft then we ch
we find only 1.3 ft which we
throw into W End Lake at
making it 34.3 wide

Eat lunch out on work
PM

Over Old Sta 23 = ft on line
at Lab

See Page 96 Book 156

BS on Sta 10

N 32° 47' W Look

S 61° 08' E Transit telescope
and run N 61° 08' W 8.0 to Sta
Ber 31 and 32 on Lake shore
3 ft from water

Nat's Lot 32 is channel 50 ft
from old Sta 23

Sta at SW cor of Lot 32 bears
S 10° 10' W 50.05

Best distributer's stakes

Curbin - Mike and I go

From SW cor Lot 1 Chan

East on line line 30 line

Lat 1. @ 45.7 Sta Hub on W side

Hill @ 95.6 Hub under Transit

@ 162.4 Hub on E Brink Hill

@ 250 Foot of Big Hill

Lies 90° R x L

262.4 stake in low salied land

+ 200

462.4 stake in salied swamp

+ 20 2 5

482.6 stake on sec line 86.8 S

of old stake marked 465.2 S

551.0 S

552

From 482.6 E Ch W 33.1

To SE Cor Lot 1.

Set 2X3X 40" green lamin
slabs in swamp mhd

"Roadway" on E face and

SE Cor Lot 1 on N face

From which we chain

200 ft N Parallel with

rec line and drive 2X2X

75" dry lamin pole

mhd on west face of

E side Lot 1 and on

East face mhd "Roadway"

this slabs drive 5 ft in swamp
30. ~~20~~ ft 20 of water

Begin @ SW Cor Lot 2 Ch E

@ 160 Foot Bit Hdl 90° R & L

Enter solid low sand

@ 248.8 = IM at Angle pt

of Lot 2 in swamp Thru

49° 11' L 88.4 T. slabs

near water's edge in soft bog

Thru Chan E side 102.6

to slabs near water's edge

Slabs near water at
only poles - not marked

Set IM at SW Cor Lot 2 and

Bit 5 and 6. at Park

All help set and mark slabs

Lot 2 clear around Point to

Boat Slit

(56)

Pack outfit SW to

Pine Top Turn P 29

Lay out circle where Bert and
Carbie stay to cut brush

Mike and I Beg @ old Sta

34 Thence 90° E 33.11 to E
side Point Landing

Then Ex line E side Pt Landing
~ 8.4 To Stake on low sea
wall 4 1/2 ft from water =
NWCot Lat 61

From NWCot 61 Chain

along shore line E. by

11 lats 50.1 Called "50.0"

@ 50.1 + 100.2 - 150.3 Straight
4 1/2 ft from water

Then light crook R.

200.4 - 250.5

Then Light turn Left 300.6

Then again Lightly Left

350.7 - 400.8

Then R 450.9 - 501. + 51.8

= 5528 Nat Lat 51 is 51.7

Wide To get East of Leaning

15 WP Roat - mile far

Thence Lightly Left

40.1 - 80.2

All stakes set close to water

3 1/2 ft about

Nat 80.2 is about 10 1/2 ft E of
old Sta (30) as I & Juelst.

Turn Lightly L 50.1

Still L 100.2

Still Left 150.3 - 200.4

250.5

57

Then lightly to the right
300.6 - 350.7 Then cross R.
400.8. - - Then L 450.9

Then L 500.0 - ~~501.0~~ 551.1

Then R, 601.2

Then L 651.3

" L 701.4

" L 50.5

751.9

intersect SW cor Boat St

Note: we are nearly 10. ft
short + so decide to make
Lot 34, which is marked
on our blueprint "35" W
wide we will reduce viz

Lots 33 and 34 we make.

25.25 and 25.25 and
mark plot lines "25.2" and "25.2"

Mike and F L @ 7-20 dark
and walk to camp
@ 8.03 Darker than hell
14 Hours today.

John W. Cress

58

April 18 - 1929 Thursday

I am 58 years old today
up @ 5 am. still dark.

Michener's logs for supplies
will walk maby

Mike Schutze and I Lv camp
@ 6-15 or on about 7 am

Take level at west end
Boat St

Elev of water in Hand Lake 100.00
assumed

		100.00
+	S	8.15
	H I =	108.15

Top of Beaver Dam 80

Shed Boat St 22.85

Elev above water = 5.30

H I 108.15

- S on ice in SWP

100' E of Lake = 6.25

SWP = 2.9 above

Hand Lake

2.90

We drive and number all
Stakes Bet Boat Street and
Point Landing Along Lake Shore

Note Lot (51) is 51.70 feet wide
on Lake Shore on account of
roots in 15" WP Leaning NW

Tree is on Lot (51)

Curbie Siltman buras brush on

Pine Top Turn

Then goes East with ~~and~~ Zaid
Mike and Cal's brush on ridge
while Mike and I climb
Back Street

East Shore Drive

Begin @ P.T. S. side Boat St
= S.E. cor Lat 33 - Extended
Cham

S54°15'W along West North
side of East Shore Drive
@ 30 pc. + 21.3 = 51.3 Hub on hill.
+ 48.7 = 100.0 slak ^{48.7}/₁₀₀

180 slak ~~on~~ 183 enter Swamp
80°R 100°L

@ 200 Swamp & lines 125 L
@ 250 " " 100 L
@ 300 " " 60 L

180. + 183 =
183
365 L swamp
400. slak + 200 =
600 " 180 +
220
400

610 enter swamp 80°L - 100°R

@ 700 swamp 125 L

@ 800 " 125 L Tomorrow
check leading SW - West
to another swamp

922.2 Spik Nkd 282 Angl
Back out Lat -
L. Swamp Run S 45°E 100 W

172.2		7.2	605
		1.6	60
55.6	50.1	5.6	70
30.1	100.2		180
105.7			915
155.9			
205.9			
50.1			
256.0			

60

From Spk 282 - Cor To
Lots

587°30'W on N side of sheet

@ 172.2 Hubon ridge N-S

@ 200 foot thick N-S

@ 215 - NE Cor Dry bog extends

90°L + 40 ft Run SW 150 ft

172.2 + 300 = 472.2 stake +

472.2	196.9	stake of
196.9	669.1	
669.1	OK.	

we want 660 = 11 Lots

Note: We will make all lots 60.1
except Lot 49 and 50 which
will be 64.1 each called
"60" and "64" flat

Figuring 33 To 48 inc
We have 922.2 and we
want 915.0

We have - 7.2 over in 16 Lots

But get back from Smith's store with
supplies and bring some lunch out
on line PM

One hub 50 ft SW of SE Cor Lot
From 554°15'W and
Turn 58°45' R and run

N 67°W @ 50 Swamp 20' L
@ 100 Swamp " 20' L
@ 120 Hub = 50

64
Turn over Hut 1+20 BS S67°E - on

Turn 65° 00' L and Run
S48°W 130.

Reg @ 56' 20. ch S48°W

@ 20 ft Swamp 20' L Brink

@ 50 " 10' L

@ 100 " 30 L

@ 130 " 35 L

Note: Drainage ditch 20 ft wide

Cuts off West 20 feet of
Lot 35 To a point 75 ft from
N.W. Cor

Then turns East & E

Passing thro old runway

slat 1119. x W To intersect
Boat St

Boat St. to be selected
on so side

or we can take 10 ft off each
lot 35 & 36. when the line
crosses ridge is 1.70 above
water in bay.

Run 17°30' R

Turn 130 BS N48°W

Run S65°30'W 475 ft Hut

@ 50 ft cen of 20 foot low spot
near L. 75 ft near west end of
runway

@ 250 Swamp 50 L

@ 300 " 50 L

@ 375 " 50 L

62

Begin @ cor to Lats 48-49 w run
 $S 87^{\circ}30'W - 64.1 + 64.1 = 128.2$
 = cor Lats 50 and 51 continues
 $60.1 + 60.1 + 60.1 + 60.1$ and so on
 To Cor of Lats 59 and 60
 Set white stake & numbered.

Over Lats 50-51 Focus
 $S 78^{\circ}30'W$ on Cor 1; Lats 59 & 60
 Turn 90 and run 80
 on E Side of West Ave 66 ft
 Set white stake for Street Cor
 At
 Nails at about 60 ft hit 8" Birch
 so to get around I turn $0^{\circ}35'R$
 66 ft set stake then $0^{\circ}35'L$ 66 ft
 set small stake divide
 distance hit and set
 $2 \times 2 \times 24$ white stake for
 Block Cor Behind etc

70711) 66 000

70711
 66

424266

424266

46.66926

70711) 66 0000 (93338
 636399

236010
 21 2133

933382

238770
 21 2133

8960

266370

8730

21 2133

230

542370

Turn $45^{\circ}R$ Ch 46.67 stake in
 center of both streets

In order to get West Avenue
out of a hole I move it E at 0 is
from 51 and 52 I clear S 87° 30' W
6 feet set but when I set a
Focus S 87° 30' W on Cor Lat 59-60

Turn 90 L and run

South 2° 30' E @ 66. set Cor

To Lat 82 and 83 Continue

S 2° 30' E on W side of

West Ave curb cut line
clear this to E-W 1/16 line

Walk NE and Continue E
you 20 ft driveway

Turn 475 BS on 130 line

28° 26' L and run S 37° 04' W

BS N 65° 30' E R

S 37° 04' W 334.2 To 2A

13 ft E only from Cor

Lat 50 and 51

Note This would clear

Cor Lat 50 & 51 just 10 ft

so that a 20 ft road would

not cut the corner of lat 51

but would touch it

Taking Swamp

@ 70 Sup 25 L

@ 125 " 65 L

@ 175 T. 200 Sup 60' L

250 " " 75 L

put curb corner 70m cut 7.15

Home at 8 PM Alma calls from Seneca

April 19-1929 Friday

Up at 5 am. Cloudy and mist
We are anxious to finish - I write
notes - Mike and I arrive on the work
@ 7-30 AM and find Curber working
Michener is to follow with our
lunch. Turn over Cor To Lab
59-60 Fours N 87°30'E on a side of st
Turn 90°R 66 ft set hub

BS N 58°W along street line set
stakes 60-61-62 and POINT LANDING
= Block Cor
Turn 90°L 33 Ft set Hub

300.0	137.5	75
162.5	300	5
<hr/> 137.5	<hr/> 437.5	<hr/> 375
87.5	375	
5) 437.5	62.5 over	
37		
25		

62.56m	300.0	236.6
44.6	255.4	18.8
17.9	44.6 short	<hr/> 255.4
	62	236.6
	50	18.8
	51.0	<hr/> 255.4
	188.0	
	32.20	

[illegible]

437.5

$$\begin{array}{r} 8 \\ 5 \overline{) 43.75} \\ \underline{40} \end{array}$$

66

Nati. along street we make lots vj

$$62 = 51.3 \text{ (51.4 chd)}$$

$$63 = 50.0 \text{ (50.1 ")}$$

$$64 = 70 \text{ Bath inc} = 20 \text{ ft (20.05 chd)}$$

$$71 \text{ is } 44.0 \text{ (44.05 chained)}$$

$$72 \text{ is } 51.0 \text{ (51.10 chained)}$$

$$73 \text{ to } 76 \text{ Bath inc} = 51. \text{ (51.05 chd)}$$

$$18.8 +$$

$$32.2$$

$$51.0 \text{ (51.10 chd) = Lot 72}$$

Eat Lunch

PM.

Set stakes 73 to 77

Nati Lot 77. moves East to
where 78 set and is wider vj

From Angle Point to NE Cor 82

we have 437.5 just chained
and we need 6.75 ft lots and 1.
one 50 ft lot = 77 to 82.6 bath inc

$$75$$

$$5$$

$$375$$

$$50$$

$$425$$

$$437.5$$

$$425$$

$$12.5 = 12.5 \text{ ft over}$$

Nati: we will make the 77 lot
62 ft wide and split the 0.50
among the 6 lots 77 to 82
OK.

Beg @ NE Cor 62 = Vx Side of
Point landing Extended to
1/4 ft from wall ch

$$\begin{aligned} \text{West along lake } 50.3 + 50.3 &= \\ 100.6 + 55.3 &= 155.9 + 75.3 = \\ &231.2 \end{aligned}$$

Cross in E side of big
Flat Rock (+) on Point
= Cor 65-66.

Lot called Vx 50.2 - 50.2
55.2 and 75.2 they are
all near wall and almost
on a straight line

Lots 66 and 67 are chain 75.3
and call each '75.2'

Lot 68 we make 70.3 and call it '70.2'

69.70 - on - we chain 50.1:
called 50"

Note: Line Bet 81-82 says so
about 10. feet so I make 81 and 82
51.3 and call each '50.0'

Val: we set stik mhd '87-88"
and as there is 'NO' 88"
we chain 140 ft so to
our random E-W line

$$\begin{aligned} &140 \\ &\underline{33} \\ &107 \text{ over ? But our random runs } 2 \\ &\quad \quad \quad 70 \text{ or ?} \end{aligned}$$

68

April 19-1929 continued

We decide to make Lats 66-67-
and 68. Wider on lake shore to
give room for bldgs on top of hill

But will first have to locate

True S. line of Gov Lot 5

Sec 14-139-29

Pg 32-Book 156

4-30 P.M. - But goes home to camp Corbin
goes home - Mike and I with Liavrit
walk 2 miles S- west and N to

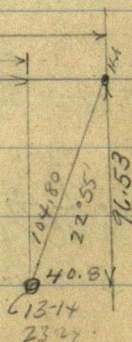
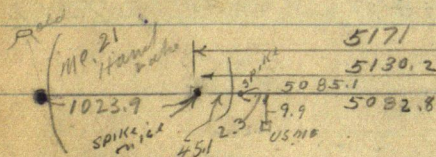
MC. No 23 - on E Side Hand Lake

US Notes call for

BP 125 17° E 9 = 5.94 FT

NP 6 N 12° W 36 = 23.76 FT

Page 32 Book 156.



Book 156 - Pg 67-71-

Book 143 Page 15-16-17-18

22° 55'

Sine 38939 X 104.8 = 40.81

Cosine 92107 X 104.8

We find stumps of old NW and SE BTS
stand almost perfect for corner and distance
from which we chain to what appears to be old
stake remains in frozen ground
when we set 2 X 36" Iron Pipe for

92107
1048
 7368.56
 3684.28
92107
 96528186

38939 69
1048
 371512
 155756
38939
 40808072

5171.0
40.8
 5130.2
45.1
 5085.1

594
23.76
 29.72

5085.1
2.8
 5082.8

True MC. N:23.

Tone Hut 45.10 E MR Bears

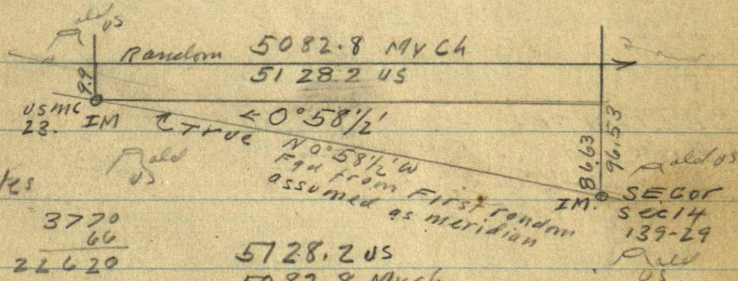
8 18°30' E 10.30 Ft

9.903 and

2.30 E

See True 15 Hut 45.10

96.53
990
 86.63



US Notes

P. 22 3720
66
 22620
22620
 2489.20
2640

5128.2 US
 5082.8 MYCH
45.4 Long short

5128.20 US (0.01704) 0°58 1/2'

5083 86.63
5083
 35800
35581
 21900
 20332

April 20-1929 Sat

cloudy
up at 4-30 Figuring Corrections
S Bdy runs $N 0^{\circ} 58' 1/2'' W$ Figured from
Our first old random as meridian
But From True E Bdy

TWO-Meridians

Note:- In figuring corrections in this
Book and in Boat 136 I used
my first random lines on N-E-S
as Meridian

In Map making I used True E Bdy
of Dec 14-139-29 as True Meridian

Figuring: West side 5295.9 +

See Page 71

Book 136

$\frac{9.9}{53058}$ about

26642

2641.6 or less from

$\frac{1}{4}$ on W side so on in 1 ft in line with
m.c. for Cor in lake?

Try 2641.6

26366

5.0 That Dam Vernier again

Correction

West on S $\frac{1}{16}$ Line see Page 20-21 this bk

.01704 N

For each foot west

46.09 spike on random gas N

232.5 Stake on ridge N

1393.0 Hub Spike gas N

1452.8 Spike in green Bush spike gas N.

1861.5 " Hub North

2061 " gas N

Random
assumed E-W

90°

90°

90°

90°

90°

Random

E.N.S. - Random assumed as medium
for F-14 wing
TRUC 5cc LMS before and no mix
making or medium

West assumed

14

0.58 1/2'

West assumed

0.58 1/2'

Tree Line

0.58 1/2'

Random assumed E-W

46.09 N

232.50 N

1393.00 N

1452.80 N

1861.50 N

2061.00 N

28 74

24 76

31 71

35.12

20x0.00V gain N 34.76

72

April 20-1929 continued
7-30 pack some of our things. Went
to my car then drove west to Coral
creek & walk north where we find
Curbi's waiting.

Bert walks back for skumb. but it
is while Mike Curbi & I

Roughly Correct

Hubs

1393.00 W N 23.74 To true line

1452.80 " N 24.76 "

1861.50 " N 31.71 "

2061.00 " N 35.12 "

Turn

2061 Ch East 21 to 2040 W

Set Hub on hill top

Turn over 2040 run 90° N 34.76

Set Hub on true line $\pm 5 \frac{1}{16}$ line

2040 W of $5 \frac{1}{16}$

Turn over 2040 W Turn 90° to random
N 34.76 Hub on

Turn 34.76 Focus East on

True Line Turn 90° L 33 ft

Hub on lat line N side of 33 ft

N 2040 W

Turn 33 = 2040 W Ch

West on true line 33 ft N of
true line

2040 + 54 = 2094 W Set 2x2x

2x inch white stake on sea
wall 4 ft from water

@ 2100 W wall edge

From stake 2094 N side of 86

we find 74.5 ft over to 86 77.78"

Re Set Stakes on Shore ⁷³

From SW Cor Lot 87 at st
line in chain 50.15 called 50"
set all stakes close to edge to
70 in. Lot 69 in with 52"
68 is 72.11 67 is 100.5 and 66
is 120.

66 = 120
67 100.5
68 72.
69 52
70 = 50
and so on

By @ SE Cor Lot 87 Ch N 235
Nati: Lots along back 265
and 83 to 87 = 88.
117.5 (chain 117.6) 588
587.5
117.5
5
587.5

Get there @ 11.40 pick outfit so to car
all go home to Senkins and Pine River in
my car. We drop Bert Michener at his
home in Pine River.
Mike Schultz and I drive to Senkins where
Mike and I find Reed and Walter.
Walter eating dinner at our house (almost gone)
I and Mike get dinner then I
take Mike home. I drive to Pequest
borrow \$25. from Est Nald Sh.

John W. Cress

April 21-1929 Sunday
 Bert Michener and his Ford
 coop arrives at Senheim @ 8-30
 9 am we pull out for St Paul

Lunch at Elb River or near
 there drive to Berta's daughter's Rev
 Mrs John Rienecke (Myrtle Michener)
 1984 Selby Ave St Paul

I make out bills viz
 Sec Envelope No 185. at my office
 Figuring Totals

Senheim Minn
 April 20-1929

"Cost of storing original blueprint of
 SHADYWOOD SHORES
 and finishing Lines 76 or Lot 7-
 See 14-139-29

March 25 to April 20-1929 viz

Corbie Siltman 11 1/2 days @ \$2.40	27.60
H B Kinne 3 1/4 days @ \$3.	9.75
E Schultze 15 " @ 2.40	36.00
J. W. Curo 20 " @ \$15.	300.00
B A Michener 20 " @ \$4	80.00
	<u>\$453.35</u>

Supplies

28.40

Total = 481.75

I take street car to N. H. and stay
 with Dr V. M. Connolly 2621 Nicollet

Nat'l. The Anderson Lumber Co at Pine
 River has a bid for 1/2 gal white paint &
 lumber for stakes about \$11. which
 they have mailed direct to Postman
 I think

Widest Holding Co

Jennins Minn April 20-1929

Sand Paul Minn

To BA Michener - do

Assisting in survey of Shady west shore and surrounding
 for lot 7. See 14-139-29

March

April 25-1929 To May 6-1929 both days inc

as per bill rendered 10 days @ 8%

40.00

At 50

April 8-9-10-11-15-16-17-18-19-20-1929

10 days @ 8%

40.00

Michener paid for camp supplies
 during above dates -

28.40

OK as to services

810840

John H. Quico

Engineer

Note: I made a mistake in the month and date of the Manufact
 to correct same as the above bill shown - the rest is correct

Quico

Midwest Holding Co
84 Paul Mining

To

John W. Cress - On

John W. Cress - On

Engineer work and expense in sketching Blue Point - plat of Shadywood
shores and surveying Gov. lots 4-5 and 7 all in Sec 14, T. 89, R. 29
Crow Wing Co. Minn. Engineer Work in the field

March

April 25-26-27-28 and

April

1-2-3-4-5-6-7-8-9-10 days @ \$15

as per bill rendered

150.00

Also

150.00

April 18-9-10-11-15-16-17-18-19-20-

Expense on above dates

27.60

Expense for a man cutting lines viz:

Corbie S. Lipman worked 11 1/2 days @ \$2.40 =

9.75

H. B. Minne " 3 1/4 " @ \$3.00 =

36.00

Earl Schuchty " 15 days @ \$2.40 =

373.35

Nab: I made a mistake in the date -- the "Month" and made the correction in my copies. Mr. Mansfield said he would also correct the original bills he held before sending them to the Judge.

April 22-1929

77
April 22-1929 Monday

I take street car up to St Paul
and @ 10.00 AM meet Bert Michener at Cor
6th and Robert St. He says Postlaw
does not answer his phone. Only a stenog
at Midwest office who said

See Mr John A Mansfield at upls
at 723 Marquette or 761 Thorpe Bldg

We find Mr Mansfield (Lawyer) at
Thorpe Bldg He says he will have to
submit our bills to the judge and that
we might be able to get our pay by Saturday

We may wait

Mr Michener hands Mr Mansfield his bill and

I will make mine out later
PM.

I make out my bill as given on page
76 this book and find in looking over
the first bills I sent in April 9-1929 that
I made a mistake in the month and
Mr Mansfield says he will make the
correction. before sending in the bills
Later

Michener and I go back to St Paul to
Midwest Holding Co office 346-
Minnesota St where we find Mr
Keith who says our bills will have
to be sent to the judge at
Wilmington Del -- this will take
time so we will not wait

I lay our bills again with
for continually upls.

Note: Mr Keith says he has an interest
in some land ———— over
on Nelson Lake Michener tells him
that it will cost \$1500. or \$2500.
I may do the work.

John A. Can.

78

April 23-1929 Tuesday
all day in Mpls & St Paul
Met Jim Clavin, Commissioner of
Public Safety Room 214 Ct Ho St Paul
At Mpls I meet Hank Aune
also Mrs Naegeli & Kline &c.
Again over mtg with Mr Connolly
B B Nelson is going to Europe &c.

April 24-1929 Wed
Michener picks me up at Mr Connolly
res and we drive to Jenkins
light lunch at Little Falls
Paris all day.

April 25-26-27 - at Jenkins no
checks come.

Notes

79

1692.8 W + 22 paces

$\frac{65.2}{1758.0}$ W = SE Cor Lot 87.

£ 20 ft driveway NE

West side of 20 ft road runs;

SE Cor of Lot 51 = SW Cor Lot 50

Passes thro Lot 50 and runs NE

W Side of 66 ft St running 90° S.

Begins on that 6 ft W of SE Cor
of Lot 52

Deep Gully begins at NE Cor Lot

85 and runs East 75 ft about

Road could be changed here &
run 875 to 8100 in fill

80

S. $87^{\circ}38'W$

$$\begin{array}{r}
 5870.80 \\
 380.00 \\
 \hline
 1290.80 \\
 35.33 \\
 \hline
 1326.13 \\
 35.33 \\
 \hline
 1361.46
 \end{array}$$

82

2087

Hand Lake.

Dec 22-1931 Tuesday

Cloudy all day - In office

Evening 90 to Brainerd Almeda

Reed & I buy reading glass 1.00.

Lafe did not work

Bring Mattie to Senhins

Dec 23-1931 Wed

Bright sunshine all out. I work in my office. Reed plays cards at Almeda's garage.

P.M. Heavy Fog Cloudy. No work.

Dec 24-1931 Thurs

Reed takes Lafe to cut wood. Then drives Mattie to Brainerd Almeda garage. I work in office.

1-30 PM Reed & Almeda return.

Reed gets Lafe and he eats dinner with us. PM 2-PM

Reed Lafe & I to Senhins on Hand Lake.

Town SW Cor 61, E side this bar 56' 43"

173.5 FT SW Cor 62 bears

33° 15' R. 100.00

Town So Cor Bet 59 and 60 Focus

N 54° 27' W on N side st

Turn 90° L - 33.0 F and set flag in E st
Chain N 54° 27' W on E st 268.70 to

I.M. in E Circle on Pine Tr. Turn

Town I.M. & 735 on E st in

W 105.10 R.R. Sph on Brink

Dec 25-1931 Christmas Fri.

83

Alma Reed and I at home in
Sinking - Herb & Reed haul wood in
PM. I call from W Paul
4-30 PM I call I to from Piquette 75¢

105.
33
21

Dec 26-1931 Sat

9-30 Reed gets Luff Cyrus Lake lunch
11-30 am in Hunt Lake

Chain From + in Big Rock on
Point 120.2 To RR. spike set 100.
New on T. old 66-67 in line
with E. stick E. extended NW
But said old lots 66-67
Nate old stake 0.20 N. change then
stake 0.20 to RR spike

From RR. spike Ch. 1 E on
Lake shore 100.4 To old stake
at old Luff 67-68 Then
still on Lake shore 72.2 To old
stake at Old Lake 68-69

Nate: we will take out lot old
lot 66-67. E. Lake
PM

From IM @ E Circle on Hill top
(Then E. level E. it is
33 ft T. IM but lot old 66-67
66-67 Then 72. To 100 105.2
on bench 7 lines down hill
54.0 To RR spike for center
old lot 66-67

From IM @ Hill top line RR
90-R. 33. ft To IM but old lot
63-64 Then down hill 122 ft
To SE cor 24' w p line 27 ft of
stick

84

Still on $\frac{1}{2}$ Turn 90° to the
So @ 33. state 2.5 W of old car
with Lot

There 88 ft down Hill 6 ft
re wall 16.0 ft W of old car
to Lot 69.70

Chain Lot 69. =

From $\frac{1}{2}$ ch 45° SW 33 ft
state then 97 ft NW
on re wall 13.7 E of old
alt ruled 47.768

Old Lot 77 is 60.6

There NW of 20 side of
291, $\frac{1}{2}$ T. Lot car 338 are 90°
from $\frac{1}{2}$ of circle at pine top
from $\frac{1}{2}$ circle + in Rock by
about $29^\circ 35'$ R. 230 ft

Aug 6th 1952

Ed & I get notes and plats
of Shadywood and drive to
Hard Lake to locate some
lots on Pine top Point of Plot
of Shadywood

We find I.M. in center of circle
of Pine top Turn. We also
find old 2x2 white stakes they
do not seem to check out
Starts to rain and we go back to
Walker.

Herb & I go to
get home between 9-10 P.M. Kids
want oil for light in their Treefort
will not let them have any.
Herb get supper try to get boys
in to eat all corn except
Don.

who says he will be right in he
is up in Pine Tree with 3 other
boys Don falls breaks his leg.
Take him to Dr. Brown

Margie takes us to Park Rapids
in her car to Hospital to Don
at Hospital

Aug Wed. 12th 1952

I go to Shadywood Shores
to check upon old stakes and
to locate new one if I can
find SE + SW corners of Lot 62
also stake at angle point on S
side Lot 63 I took for the SW
Cor of Lot 61 being SE cor of Street
Point Landing. I think the cor will
come in the road or trail now built
I over 2x2x24" white stake
notes call for an I.M. 33 ft
from I.M. in center of Turn and
90 to E of Street site on I.M. in center
of Circle Turn 90° R and run South side
of Street Temp line look-
ing for old stakes

Note I found the R.R. spike on point
105 ft from I.M. in center of Circle

$$\begin{array}{r}
 244 \\
 20 \\
 \hline
 264 \\
 35 \\
 \hline
 299
 \end{array}$$

also I found a ^{old} stake 2x2x - white
 stake set for cor to Lots 59-60. Ang.
 Point N side of street

also find stake 2x2 at angle point
 of East Shore Drive North end of
 lot 75

Aug. 13-1953

Go to Park Rapids to see
 Don. at Hospital

Book 143

Aug 14-1953

July 3rd 1962

John - Bob + I to Hand Lake

We beg. at I Man Lake shore
bet Lots 69-70 and chain
along shore old stakes seem
to set between 2 + 3 ft too far
SE

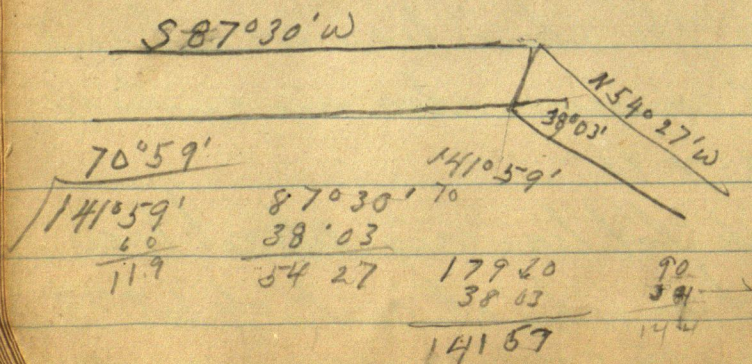
From I.M. original NE cor
Lot 69 chain $S 54^{\circ} 27' E$ on
to this course we set tower a
wood stake Marked 72-73 +
Back up on flag at said I.M.
Note along the shore line we set spikes
at lot corners also in center of
lots 73- + 75-

on back lot line orig. street line
we set marker at center of lot 73
also 25 ft SE from stake 74 + 75-

April 16th 1955 Sat.

Ed & I to Hand Lake to check lots

Tower IM in Center circle Hill top. turn
site won R.R. spike which is in & S extended
run E out 60' spike in & S over gully
Tower 60' spike. Turn 90° from & and
chain 33 ft N+S. out 60' spikes on Lot
lines Tower 60' spike 33 ft N of & site
won stake which runs 90° to & 33 ft out from
IM in Center of circle from this stake
we chain E 10 ft out 60' spike @ 40 old
2x2 Lot corner stake + 109 + 120 out 60' spike
1 inch 5 of old 2x2 stake angle pt of structure



70°59'

Sine 945424

Cosine 325843 into 66 = 202.53

$$66 \div 945424 = 69.81$$

HJ

Grubba

520 Kilian blue

Kilina Blvd

St Claude

April 17-1953 Sunday
Ed & I to hand Lake

Town SE cor lot 66 side SE
along S. side of street where
the new southerly Street line
was fix when the court closed
part of street new S. line of street
runs from SE cor lot 66 to NE cor
Lot 76

From SE cor lot 66 chain
SE along new lot line 8 ft to
pt for New SW cor of said lot 66
set I M then continue along
lot line 2 ft to pt in line with
East side of lot 69. pt for I M

49.7

140.6

49.7

90.9

54.20

as the E line of Lot 69 hits
N.P. I run a random from SE cor
Lot 69 Miss^{old} NE cor lot 69, a distance
of 0.5 - set pt on New Lot line
@ 140.6' from I Mac lake where
to new St. line at 90.9 old lot cor
als E 0.50

.0055 = correction

90.9 / .5.000

140.6 x .0055 = 0.77

from SE cor Lot 66 to E line of
Lot 69 extended = $\frac{13}{5.4 \div 4} \div 4 = 13.6$

July 6-1952
John Bob & I to Hand Lake
check chain Lake Shore
from I.M. orig cor 1.469 on street
run S 54° 27' E

July 6th 1962

Bob takes Jerry to Br. at
Brammer

John & I to Hand Lake
Tower A Pair Lot 75-

run S 87° 30' W at 15' lat cor
+ 50 lots 76-77 + 60

July ¹⁸ 17 1962

John - Bob & I to Hand Lake
Otto gone

Tower spike at A.P. BS N 54° 27'
W run N 87° 30' E as this line
hits hog buildings & open water
We Turn L 17° 13' - 130 ft
spike in road Sta 1

Sine $29599 \times 130 = 38,48$ L W

Cosine $95519 \times 130 = 124,17$ - N

15-	275-		124.17	
50	3-	1831-	161.13	50000
60	375-	1713	209.88	49518
75		122	495.18	4.82
90				

Tower 130 BS on A.P. + run
Turn R. $18^{\circ}25'170$

Sine $31868 \times 170 = 54.18 R$

Cosine $94786 \times 170 = 161.13$

Tower 170 sta 2 Varion 0°

Turn R. $17^{\circ}27' - 220$

Sine $29987 \times 220 = 65.97$

Cosine $95398 \times 220 = 209.88$

54.18

38.48

Call Lat Line N-

Run N $17^{\circ}13' W 130'$

Sine $29599 \times 130 = 38.48 W$

Cosine $95519 \times 130 = 124.17 N$

N $1^{\circ}22' W 170$

Sine $02385 \times 170 = 4.05 W$

Cosine $99972 \times 170 = 169.95$

$\begin{array}{r} 384.8 \\ 405 \\ \hline 7253 \end{array}$
 $388^{\circ} 48' W$

$\begin{array}{r} 3884 \quad 12417 \\ 405 W \quad 16995 \\ \hline 4289 \quad 29412 N \\ 7090 \quad 20824 \\ \hline 11379 \quad 50238 \\ 11343 OK \end{array}$

$N 18^{\circ} 48' W 220$

Sine $32227 \times 220 = 7090 W$

Cosine $94665 \times 220 = 20826 N$

Lot cor - A.P. NE cor lot 82
 is $113.79' E$ & $2.38 S$

$\begin{array}{r} 113.79 \sqrt{238.00} \\ 22758 \\ \hline 104200 \\ 103211 \\ \hline 98900 \end{array}$
 $\begin{array}{r} 11379 \\ 22758 \\ \hline 11379 \\ 7 \\ \hline 103211 \\ 1367 \\ \hline 11379 \\ 8 \\ \hline 91032-99978 \end{array}$
 $\begin{array}{r} 113.79000 \\ 99978 \\ \hline 138120 \\ 99978 \\ \hline 381420 \\ 299934 \\ \hline 814860 \\ 799824 \\ \hline 150340 \end{array}$
 $\begin{array}{r} 1020908 \\ 11379 \\ \hline 3188172 \\ 146336 \\ \hline 62724 \\ 20908 \\ \hline 20908 \\ 2 \\ \hline 23791 \end{array}$
 $\begin{array}{r} 102094 \\ 99978 \text{ into } 11379 \\ \hline 399912 \\ 99978 \\ \hline 299934 \\ 655 \\ \hline 99978 \\ 7 \\ \hline 697846 \\ 99978 \\ \hline 799824 \end{array}$

99978

11382

4199956

7498246

999349

9997895

999349

9997895

999349

37.1
11382

2094

45528

102438

22764

23833

908

11382

2094

45528

102438

22764

23833

908

July 19-1962

rain

in office check figures

.020982 = 1'12"

113.43 / 238.00

1'12"

Since $02094 \times 113.45 = 2.38$

Because $99978 \text{ into } 113.43 = 113.45$

Calling the N line of Lots 76 to 82.00

Then the E line of Lots 83-1687

would be Called East

Sec 14-139-29

Hand Lake

our spike in road is 113.43 W and
2.38 N of cor to lots 82-83 on street
still calling boundary line as
stated

spike in road is $117.5 + 117.5 +$
 $113.43 = 348.43$ ft West of cor to
lots 84-85 on street and 2.38 ft N
and

$113.43 + 117.50 + 117.50 + 117.50 + 117.50$
 $117.50 = 700.93$ ft W of S cor of Lot 87
and 2.38 ft N
 $+ 32 = 733.93$ to Gov't Lat line

17

1° 22' R

2183.5

^{2 2}
295.99

¹
965.19

¹³⁰
88.7970

¹³⁰
28.65570

295.99

965.19

38.47870

124.1747

318.68

947.86

299.87

2230760

6635020 59774

318.68

947.86

5417560

16113620

665.72

95398

02385

907960

16.6950

796

23.85

5756

11.0545

32282

94646

1° 22'

645540

1092720

17.27

64554

19292

18° 49'

71.20.4

20822120

94663

22227

1893300

644540

189330

64454

20826300

7589970