

7 10 7 31
97

MINING
TRANSIT BOOK
368

97

INDEX Pages.

Donner Begins Work	Page 1 To 2
Hiram Twp 140-31 Donner	3 To 19
Cass Co Sec 17-140-30 "	20 To 23
Jenkins Levels Donner	24 To 27
Walden Twp 137-29 Donner	28 To 45
State San 142-31 "	46 To 47 ✓
Cass Co 17-140-30 "	48 To 60
Hammond Townsite "	61 To 66
Hiram Twp 140-31 " Donner	67 To 68
Cass Co 17-140-30 "	68 To 70
Hammond Townsite "	69 To 71
Cass Co Road 138-30-31 "	72 To 91
State Sanatorium "	91 To 102 ✓
Cohasset Can Co 143-25 "	103 -
Hiram Twp 140-31 Curo	104 To 120
Hiram Twp 140-31 Bryant	120 To 136
Hiram Twp 140-31 Curo	137 To 159
Board Bill Curo and Donner	163

Walker

2 Glenora Minn.

Sunday July 12 1914

Lv. Glenora @ 5:30 A.M. via C. & N. P. Ry.

R.R. fare 1.04 Ar. Mpls. 7:45 A.M.

All day in Mpls.

Lv. Mpls. 7:45 P.M. via N.P. & M. & S.

Fare 3.84 This is my first day for Curo.

Monday July 13, 1914

Ar. @ Walker 3:00 A.M. over night
@ Chase Hotel

Work all day in office on maps.

Over night at Chase Hotel

Tues. July 14, 1914

All day in Curo's office @ Walker
copying necessary field notes for County
road surveys.

County Commissioners meeting today.

Paid Chase in full \$2.50 for board
including breakfast. Dinner at

Chase didn't pay don't intend to.

Supper & over night with Curo.

Breakfast 13¢ & 15¢ at Rest. 70

Frank A. Danner

July 15, 1914 Wed.
 L. Walker @ 9.36 am for Hackensack
 Paid \$3.20 ticket to Hackensack from Curo.

Ar. @ Hackensack 10 A.M.

But Gallope takes Curo + I across
 lake to Victor Martin's farm
 with Gas Launch.

We go to the $\frac{1}{4}$ corner between
 Sec. 94 & 232 140 R. 31 where
 U. S. notes call for (K to W @ 2)
 W. P. 14 N 53° W. 82 lks. = 54.12 ft.
 We find 1 in. iron bolt set
 by Guy Todd for the true
 $\frac{1}{4}$ corner, from which the
 stump of the old B. T.
 stands correct for course &
 distance. We take new bearings
 as follow:

Nail at base of old U. S. B. T.
 stump bears N. 53° W. 53.93 ft.
 Nail in 10 in pop. stump bears
 N. 2° 16' E. 35.8 ft. distance.
 Va. 11°. Old Buff & Berger Transit
 100 ft. Chicago steel tape.
 dinner with Victor Martin

Frank A. Downer

4

July 15¹⁹¹⁴ Cont'd Hiram Twp.
P.M.

We are working for Hiram Twp.
Cura, Donner & Victor Martin
walked to the corner of Sec.
23, 24, 25, 26 where U. S. notes
call for a post and the following
bearing trees. (B.P. 8 N. 68 W 28)
B.P. 8 N 68 W 28 = 15.45 ft
N. P. 10 N 54° E 66 = 43.56 ft
N. P. 12 S 36° E 88 = 58.08 "
We meet W^m Kindall who
shows us the old stake (pre)
old stake set by former
County Surveyor B. B. Bartlett,
from which we find the
J. P. stump also the stump of
the old S. E. B. T. and from the
face of these stumps we
set stake in hub for true
corner by flat chain after
which the old N. P. bears

var. 9. 52° 30' E 58.08 ft and the J. P.
bears S 80° 30' W 15.45 ft. the old
N. E. B. T. cannot be found.

Frank Donner.

We mark new bearing trees as follows.

J. P. 5 S 52° 16' W 21.85 ft.

J. P. 5 S 69° 05' E 20.54 ft.

at 9° var.

Going half mile south to $\frac{1}{4}$ corner between 25 & 26, 140-31 where U. S. notes call for B. P.

4 S 2 $\frac{1}{2}$ ° W. 50 =

asp. 2 S 31° E 15 =

We are unable to find any evidence of the old bearing trees but we find a stake marked $\frac{1}{4}$ Sec. from which we pace $\frac{1}{2}$ mile south to the corner of sections 25, 26, 35, & 36 where U. S. notes call for N. P. 12 S 69° E 330 lks = 217.80 ft.

N. P. 10 S 18 $\frac{1}{4}$ ° E 300 lks = 198 ft.

We find stumps of both old bearing trees and quit for night. Over night with Victor Martin. Curd goes back to Walker on midnight train.

Frank A. Downer.

140-31

July 16, 1914 Cont. Hiram Twp.
 Victor Martin & I leave his place
 @ 6.45 A.M. and walk over to
 corner of Sec. 23, 24, 25 & 26
 where W^m Kindall joins us &
 we start to run road from
 section corner 23, 24, 25 & 26 @ Sta.
 7 + 18.875 we set temp. Hub. @ Sta.
 7 + 86.5 we cross old trail @ ..
 10 + 2.5 we cross old trail @ ..
 13 + 56.15 we set Temp Hub. with tack.
 At ^{11.30 A.M.} W. M. Bodenhofer join us. We
 clear brush till noon. I eat dinner
 with Victor Martin in the shade
 of the pines. We are at Sta. 17

T. M.

Victor Martin leaves to rack
 up oats. Donner, Kindall and
 Bodenhofer go on with north
 and south road from sta.
 17 @ Sta. 17 + 42.55 we set temp Hub
 with tack @ Sta 24 + 29.75 we
 set temp. Hub with tack @
 sta. 22 + 65 we enter swamp
 @ sta 23 we leave swamp.

Frank & Donner.

Working for Hiram Corp. — Time Sheet.

(5)

7

Launch Livery
Bert Galloper July 15, 1914

Aug. 20, 1914.

Mrs. Martin Aug. 20, 1914 Two Trips

Aug. 21, 1914 One Trip.

	15	16	17	18	19	20	21	22	23	24	25	26
Frank A Donner	1	1	1	1	0	1	1	$\frac{1}{2}$	1	1		
Expence	$\frac{1}{3}$	0	0	0	0	0	0	0	0	0		
J. W. Curo	1	0	0	0	0	0	0	0	0	0		
Victor Martin	$1\frac{1}{2}$	1	1	0	0	0	0	0	0	0		
Wm Kindall	0	1	1	1	0	1	1	$\frac{1}{2}$	1	1		
W.M. Bodenhofer	$0\frac{3}{4}$	1	$\frac{1}{2}$	0	1	1	0	0	0	0		
Harold Benister	0	0	0	0	0	1	$\frac{1}{4}$	1	1	0		
G.E. Gatchell	0	0	0	0	0	0	1	0	0	0		
Ralph Gatchell	0	0	0	0	0	0	1	0	0	0		
Curo						1	1					
Donna						$\frac{1}{4}$	0					
P. Linneberg						0	1					

August

8

⑥

146-31 Hiram Twp.

July 16, 1914 Cont. Hiram Twp.

@ sta. 27+55 we enter swamp

@ " 28 " leave "

We run to sta. 30 and quit
for the night Over night with
Victor Martin.

July 17, 1914 Cont. Hiram Twp.

A. M.

We continue on the road south
at sta. 31+58.3 we set temp. Hub.

@ sta. 34+13.9 we set temp. Hub.

@ sta. 38 we cross old Park Rapids
road, @ sta. 39+25 we enter marsh

@ sta. 41+15 we leave marsh.

@ sta. 42+90.75 we set temp. Hub.

@ sta. 44+87 we set temp. Hub.

We quit for dinner. Victor

Martin & I eat dinner in the
shade of the pines.

P. M.

We continue on the road
south and @ sta. 49+65.3 we
set temp. Hub. We run
about 35 or 40 ft. west of old

F. A. Donner

corner of sec. 25, 26, 35 & 36.
where U. S. notes call for N.P. 12
S 69° E 330 lks = 217.80 ft. N.P. 10
S 18¼° E 300 lks = 198 ft. We clear
brush between corner of sec.
25, 26, 35 & 36 & to the two
bearing trees mentioned above.

I set up transit over old
corner stake but I cannot
check the angle that the
U. S. notes give using a
var. of 9°. We chain to
old bearing trees from old
corner of sec. 25, 26, 35 & 36
but do not check the distance
call for by the U. S. notes. We
quit for the night. Over
night with Victor Martin.

July 16, 1914 Cont. Hiram Trap.

A. M.

We walk to corner of sec.
25, 26, 35 & 36 and flat chain
true corner sec. 25, 26, 35 & 36.
I set up transit over corner

J. A. Donner.

July 18, 1914 Cont. Hiram Twp.
 And read the following angles N.P. 10
 $S 20^{\circ} 22' E$ 198 ft. & N.P. 12 $S 70^{\circ} 20' E$
 217.8 ft. where U.S. notes call
 for the following angles N.P. 10
 $S 18\frac{1}{4}^{\circ} E$ 198 ft. & N.P. 12 $S 69^{\circ} E$
 217.8 ft. We set new bearing
 trees as follows.

J.P. 8 $N 89^{\circ} 25' E$ 84.45 ft.
 J.P. 6 $S 12^{\circ} 16' W$ 28.90 ft. var. 9°
 We hit temp. line at $53+15.9$,
 and 53.4 ft. west of corner
 of Sec. 25, 26, 35 & 36. var. 9°
 We set Hub on true line
 @ $49+65.3$ We set Hub on
 true line @ $44+87$. We set
 Hub on true line @ $31+58.3$
 We set true $\frac{1}{4}$ corner between
 Sec. 25 & 26 @ $26+58.5$ where
 U.S. note call for B.P. 4 $S 62\frac{1}{2}^{\circ} W$. 30 lks., asp. 2531 E. 15 lks.
 We are unable to find any
 of these bearing trees so we
 set new bearing trees from
 true $\frac{1}{4}$ corner as follows

J. A. Donner.

July 18, 1914 Cont. Hiram Twp.
Big Rock 3 ft. dia. with cross cut
in top $586^{\circ}21'W$ 20.77 ft. N.P
12 N. $5^{\circ}36'45'$ ft. var. 9° .
We set temp. $\frac{1}{16}$ corner @ 13+25.5
We quit for dinner. Victor Martin
and I eat dinner in the shade.

T. M.

W. Bodenhofen joins us. He
was cutting hay this A. M.

We set true $\frac{1}{16}$ corner 13.25 ft.
from temp. line @ 13+25.5 and
set new B. T. to it as follows.

J. P. 6 N. $83^{\circ}19'W$ 29.75 ft.

J. P. 35 $38^{\circ}E$ 67.45 ft.

We set true Hub at 7+18.87.

7.19 ft. from temp. Hub. I set up

@ corner of Sec. 23, 24, 25 & 26 and

use Hub @ 7+18.87 for back sight

and run true line north from
corner of Sec. 23, 24, 25 & 26. var $9^{\circ}30'$

At 2+96.4 N we set Hub on true
line. We set Hub on true line.

@ sta. 10 N. We enter swamp @

10+50 N. At 13+20 N we set $\frac{1}{16}$

of A. D. owner.

12

(10)

140-31

Hiram Twp

July 15, 1914 Cont. Hiram Twp.

P.M.

corner for W^m Kindall. Quit
for night. Over night with
Victor Martin.

July 19, 1914 Cont. Hiram Twp.

Sunday nobody works but father.

July 20, 1914 Cont. Hiram Twp.

A.M.

We leave swamp at sta.
19 @ 23+18.75 we set Hub.
@ 26+40 we set $\frac{1}{4}$ corner
between Sec. ²³25 & ⁴²⁴26 with
new bearing trees as follows.
Birch 12 N. $36^{\circ}49'W$. 42 ft.
W.P. 36 S $84^{\circ}50'E$ 121 ft. var $9^{\circ}30'$
@ 30+96.3 we hit water
edge of lake. quit for
dinner. var $9^{\circ}30'$

P.M.

We start east and west
road @ 13+25 south and
run east on var. $10^{\circ}30'$ @
4+83.4 E we set Hub. We

J.A. Donner

July 20, 1914. Cont. Hiram Twp.
P.M.

run to sta. 10 E. and quit
for the night.

July 21, 1914, Cont. Hiram Twp.
A.M.

The two Gratchell boys join
us. We set Hub at 14 E.

We set Hub @ 14 E.

" " " " 19+65.6 E.

" " " " 35+36.7 E.

We quit for dinner. I eat
my dinner in the shade
and then go to town for
my mail which I expect
from Curo. Do not get
any. Call Curo up from
Lake View Hotel. Curo left
word there that if any
of his men wanted film
they should phone to
Jek Kins so I did. Curo
tells me to stay here
until he comes. I walk
J. A. Donner.

14

(12)

146-31

Hiram Trap

July 21, 1914 Cont. Hiram Trap.
P.M.

back to work and get
there at 1.30 P.M., men are
all working.

At 36+90 we cross old park
Rapids road @ 46+74.15 we set Hub.
We run on to 53 E and then
go north across to ^{SEC. 19-24-25-30 Rgeline} ~~7/4~~ corner
where iron Hub is set and
run from there south on
var 9°. At 2+60.5 we cross
Park Rapids road. @ 2+82.85
we set Hub. @ 95 we set Hub.
we quit for the night. Over
night with Victor Martin.

July 22, 1914 Cont. Hiram Trap.
A.M.

We run on from Sta. 95.
@ 12+33.75.5 we hit east &
west road and @ 52+86.86.
we set $\frac{1}{4}$ corner with B. J.
as follows:

J. A. Donner

July 22, 1914. Cont. Hiram Twp.

A. M.

J. P. 12 N. $41^{\circ}39'$ W. 59.2 ft.

W. P. 14 S. $27^{\circ}4'$ E. 93.6 ft.

Harold Benister goes home and
Wm Kindall and I come $\frac{1}{6}$
corner on south shore of lake
where H. Todd left off
surveying and we started
from there and run south
 $35^{\circ}20'$ E. 140 paces, N. 69° E 120
paces then N. 82° E 250 paces
and we hit the north & south
road about ten ft. north
of $\frac{1}{4}$ corner between 23 & 24.
This is a sort of a traverse
road which Victor Marten
asked me to run for him
and which he intends to
travel as soon as N. & S road
is in use. Quit for dinner.
Dinner at Victor Martins place.

P. M.

I complete my notes and write a

J. L. Downer

(76)

(14)

140-31 Hiram Twp

July 22, 1914, Cont. Hiram Twp.
P. M.

letter then I walk to town to get further information from Curo. I get letter from Curo saying he will come to Hackensack on the 4:19 train. I wait for train and see Curo. Curo stays @ Hackensack with me.

We go out and locate corner 18, 17, 19 & 20 and set Hub in Jim Mills' yard to start from. We come back to town and get Charles Salope to take us across the lake. I go over to Victor Martins and get the outfit and my clothes and come back and stay at the Lake View Hotel over night. Curo goes to Walker on early morning train.

F. A. Donner.

July 23, 1914. Hiram Trap.

NE COR. S. 25-140-31

We start at the intersection of the north & south line & east and west line and continue south @ 24 we set Hub on temp. line. We quit for dinner. Dinner with Kendall & Benister in the shade.

P.M.

We continue south and @ 26 + 40 we look for $\frac{1}{4}$ corner where U.S. notes call for the following B. I.
Y. P. 12 N. $64^{\circ}45'E$ 23 } ES 40 S. 25-
Y. P. 12 S $84^{\circ}W$ 23 } 140-31

We are unable to find $\frac{1}{4}$ corner and the B. I. called for by U.S. notes. We hunt around thoroughly. We continue line S. @ 27.5 we set temp. Hub. We continue south to sta. 34.5 and quit for night. Over night @ Hotel Lake View.

F. A. Donner.

(18)

(16)

140-31

Hiram Twp

July 24, 1914. Hiram Twp.

A. M.

We continue line south from 34. @ 37+75.95 we set temp. Hub. We continue south and at 40+90 we enter swamp and continue in swamp to 48. We quit for dinner. Dinner in the shade of the pines.

P. M.

We continue south in swamp and @ 53 we set temp. Hub. We look around for about $2\frac{1}{2}$ hrs. for corner which U. S. notes call for as follows. at SE cor. S. 25-40-31

Live tam 10 N. 57 $\frac{1}{2}$ E. 49

Dead tam 7 N. 69 $\frac{1}{2}$ W. 48

Live tam 7 S. 44 W. 33

Dead tam 10 S. 86 E. 32

We are unable to find corner or any of these B. T. We find a corner stake set by Bartlett J. P. Donner.

July 24, 1914. Cont' Hiram Twp.
P.M.

I set up over this corner and turn the angles given by U. S. notes and chain the distance but we are unable to find any B. T. for this corner. We quit for the night. I call up Curo @ Jenkins from the Lake View Hotel and he says to discontinue this work and start at County work N. E. of Hackensack.

Over night at Lake View Hotel

F. A. Donner.

(20)

①

Co Road Crew Co
17-140-30

July 25, 1914 Working for Cass County.

A. M.

I go out to Sec. corner 25, 30, 36 & 31 for my outfit when I left it the day before. I come back and go out to Jim Meills to run North & South sec. line starting from sec. corner 18, 17, 19 & 20 and run north. I go to Jim Meil's place and find nobody at home. I walk down the road a little and find Jim Meils and his brother getting a load of hay. Jim says he couldn't help me in the A. M. so I came back to Hackensack for dinner. It was 11 o'clock when I got to Hotel. Dinner at Lake View Hotel.

P. M.

I set up over Hub which Curo set in yard of Jim F. A. Donner.

July 25, 1914, Cont. Cass. County.
Weill. place and take sec.

corner of 18, 17, 19, & 20 for
back sight. This Hub is at
sta. 3+25 N. We run north
@ 13+23.15 N. we set Hub.

(at edge of lake. We set Hub
across the lake. I turn right
angle from this line and
we run east 3 sta. and
quit for night. Over night
at Lake View Hotel.

July 26, 1914 Sunday.

At Lake View Hotel.

July 27, 1914 Cass. County
A. M.

I set up over Hub @ 13+23.15
and turn right angle and
continue east line @ 5+7.75 E
we set Hub. We run 10 sta.
east and then cross the lake
and set up over Hub which
we set from from temp. Hub

J. A. Donner.

July 27, 1914, Cont. Cass. County
A.M.

@ 13 + 23.15 N. and use Hub

@ 13 + 23.15 for back sight.

I right angle from temp.
line and run east @ sta.

4 + 8.05 E. we set Hub @ 8 E.

we set Hub. quit for dinner.

Dinner @ Lake View Hotel.

P.M.

I call Curo up @ Jekkins
and he tells me to come
to Jekkins tomorrow A.M.

I set up @ 8 E and right angle
south @ 8 + 99.55 we set

Hub @ 13 + 99.35 we hit
east & west line @ sta. 8 E.

on south side of lake. We

cross the lake again and
I set up over Hub which

is @ 27 + 22.45 N. We run
north to about 34 N. and

quit for it was raining.

It was just 4.30 We quit
for the night. Over night @ Hotel

J. A. Donner.

Working for Cass County.

Time Sheet.

	22	23	24	25	26	27
Frank Donner	1/2					
Expence				0	0	0
Jim Miell				1/2	0	1
Geo. Miell				1/2	0	1

④ Cass Co - Road
17-140-30

23

J. A. Donner.

July 28, 1914. Working for Jenkins.
A. M.

I leave Hackensack on 10.19 train and arrive at Jenkins at 11.30. Curo meets me and we go over to Hotel and then down to his office (in barn) and look over some of the work to be done.

Dinner @ Bryant's Hotel.
P. M.

After dinner Curo, I and Roy Bryant start @ $\frac{1}{4}$ corner between 27 & 34 we chain west along true line @ 8 ch. + 2662.35 ft. = 2662.35 ft. intersect corner of 27, 28, 33 & 34 Sup. 137 R. 29. We set a few iron corners & quit for night. Over night @ Hotel.

J. A. Donner.

Working for Jenkins.

JULY
28 29 30

Frank Dinner	1/2	1	1
Expence	48	0	0
Roy Bryant	1/2	1	1
Expence	0	0	0

Dinner sheet.

(2)

Jenkins Village

25

G. A. Dinner

July 29, 1914. Working for Jenkins
Curo, Roy Bryant and I
set iron Hubs west of track.
P.M.

Roy and I cont. setting
iron corners west of track.

July 30, 1914. Working for Jenkins
A.M.

Roy & I cut road one block
east of Curo's Merchandise
store. Then we cut up
some two inch pipe
for corners.

P.M.

Beginning @ $\frac{1}{4}$ corner of
27, & 34 Twp. 137 R. 29 and
run east @ 2665.4 we
intersect sec. corner
— — — correcting back
1332.70 we set $\frac{1}{16}$ corner.
Roy and I go up First St.
and look for corners of
blocks. We find two.
J. A. Donner.

July 30, 1914 Cont. at Jenkins.

P.M.

Then Curo comes and we
go up on Lilac St. west
of track and check up
some levels taken by
Curo. 6.30 quit for night.
Over night at Hotel.

F. A. Donner.

28

Record No ①
988Walden Twp
137-29-July 31, 1914. Working for Walden Twp.
A.M.J. W. Curo & self, Geo. Nooman,
Geo. Ellis & team drive to
corner 8, 9, 16 & 17 Twp 137 R 29.Where U. S. notes call for
B. P. 7 N. 53° E 40 = 26.40 ft.

" " 10 N. 70° W 36 =

" " 9 S 62½° W 33 =

" " 6 S 40° E 11 =

We find stump of N. E. tree
from which we set Hub &
stake for true corner with
new B. P. as follows.

J. P. 5 N. 33° E. 79.77 ft

J. P. 8 S. 24° 40' W. 134.97 ft.

J. P. 3 S 66° 23' E. 71.70 ft. var. 9°

To correct the transit
line run by Gates between
sec. 16 & 17 Twp 137 R. 29we set over Hub on random
line 5280 ft. N. of corner to
sec. 16, 17, 20 & 21. From this
point we run N. 11.64 ft.
to 5291.64 ft. N. thence E.

J. A. Danner.

July 31, 1914. Cont. Walden Twp.

14.44 ft. to corner to sec.

8, 9, 16, & 17 Twp 137 R. 29 (var 940')
correcting south @ 2640 N.

We run N. 5.82 ft. to 2645.82 ft.
thence east 7.22 ft. at which
point we drive Hub & tack
for true $\frac{1}{4}$ corner ^{pt.} sec. 16,
17 Twp 137 R. 29 with new
B. L. as follows.

G. P. 10 N. $28^{\circ}35'E$ 57.17 ft.

" " 10 S $74^{\circ}12'E$ 63.55 ft.
var. 9°

Retracing transit line run
by Gates.

Setting transit over a Hub
set 5279.40 ft. East of the corner
to sec. 7-8-17-18- Twp 137
R. 29 the new corner to
secs. 8-9-16 & 17 sets S.
 $33^{\circ}44'E$ 91.80 ft. magnetic
var. about $9^{\circ}20'$

Retracing transit lines
run by Gates from a sharp
F. A. Donner

July 31, 1914 Cont, Walden Twp.
A.M.

stone at the corner to Sec.
7-8-17-18 Twp. 137 R. 29. and
following the line south
to a Hub marked "2640"
a Hub and tack set by
Sates for the true $\frac{1}{4}$
corner between Secs. 17 & 18
Twp 137 R. 29 sets South 13.18 ft.
to 2653.18 ft. south, thence
West 22.00 ft. to the true
 $\frac{1}{4}$ corner set by Sates
between Secs. 17 & 18 Twp 137
R. 29.

Still retacing Sates
transit lines we begin
@ the new $\frac{1}{4}$ corner on West
side of 17 Twp 137, R 29
and walk East @ 1009.70
find Hub & tack.

@ 1320 find Hub & Tack

@ 2124 " " " "

@ 2640 " " " "

@ 3311.80 East the new $\frac{1}{4}$
H.A. Donner.

July 31, 1914, Cont. Walden Twp.
J. M.

corner just set by us bet.
16 & 17 Twp 137 R. 29 sets
north 33.40 ft.

To correct east & west
center of sec. 17 Twp 137 R 29
At 5311.80 E. the $\frac{1}{4}$ corner
on E. side of 17 sets north
33.40 ft.

Correcting back:

Hub. 2648 goes 15.90 ft E.
to 2655.90 ft. E. thence north
16.70 ft. which should fix
true center of sec. 17 Twp
137 R. 29. but as Gats
may not have chained
this east & west line
close enough we decide
to run N. & S. center line
before fixing true center.

Correcting west:

Hub 2124 ft goes north
13.34 ft.
J. L. Dorrer

Hub 1320 goes N. 8.29

Hub 1009.70 goes N. 6.34

Driving to corner of Sec.
corner of 16, 17-20 & 21

Sup 137 R 29 Where U S
notes call for:

B. P. 10 N. 15° E 83 lks.

" " 12 N. $6^{\circ}30'$ W. 94 lks.

We find a flat iron
rod. previously establish
by Curo for the N
corner with B. P. as follows.

J. P. 5 S $42^{\circ}33'$ W. 57.75 ft.

Casp. 4 N $62^{\circ}20'$ E 57.25 ft.

J. P. 6 S $27^{\circ}30'$ E. 46.65 ft.

var. 9°

Quit for night. Supper with
Bryant. Over night with
Geo. Ellis.

J. A. Donner.

Aug. 1, 1914. for Walden Twp.
Saturday
A. M.

Geo. Ellis and I start from his House about seven o'clock A. M. and go to Jenkins after cement to set sec. corners with. We drive to the sec. corner of 8-9-16-17 Twp. 137 R. 29. previously established by Curo. where we pull up wood stake and put in its place a galvanized pipe 2" thick 4' long spike for anchor rod thru bottom. No cap. set its full length in ground in bed of concrete mixed by Donner 4 to 1 mixture. For the true corner of 8-9-16-17 Twp. 137 R. 29. Quit two hrs. for rain.

J. A. Donner.

Aug. 1, 1914 Cont Walden Twp.
P. M.

Driving to $\frac{1}{4}$ corner
between 16-17-137-29
we pull up the wood
hub and put in its
place a 2" X 48" galv. iron
pipe, spike for anchor
rod thru bottom, no
cap, set its full length
in a bed of 4 to 1 concrete
for the three $\frac{1}{4}$ corner
between 16-17-137-29.

Driving to sec. corner
of 16-17-20-21-137-29
we pull up the flat
iron rod and put in
its place a 2" X 48"
galv. iron pipe, no cap.
spike anchor rod at
bottom set its full
length in a bed of 4 to 1
mixture of concrete.
Over night @ Hotel Jenkins.
J. A. Dorner.

Working for Walden Twp. Time Sheet.

July

F.A. Donner 3 1/2
J.W. Guro 1
Geo. Hooman 1
" Ellis & 1
Team 1

Aug.					
1	2	3	4	5	6
1	0	1	1	1	1
1	0	0	0	0	0
0	0	1	1	1	0
0	0	0	1	0	1/2
0	0	0	0	1	0
0	0	0	0	0	1
0	0	0	0	0	1/2

F.A. Donner
Geo. Ellis
Lester Pollock
J.W. Guro
Wm. Jokela
O. Sarkiabo
Geo. Newman

Aug. 2, 1914. Cont. Walden Twp.
Sunday.

Breakfast @ Hotel.

Dinner @ Rest. \$2.50 pd.

Supper & over night @
Geo. Ellis.

Aug. 3, 1914. Cont. Walden Twp.
A.M.

Lester Pollock & I drive to
 $\frac{1}{4}$ corner between Secs. 7-8-137
- 29 & dig trench for corner
6' x 4' x 2'. Rocks to dig in.

Awfully hard digging. Have
to pick every shovel full.
We finish this trench and
quit for dinner.

Dinner @ Andersons.

P.M.

We drive to Pine River for
sand. No sand in this
country. We drive back to
 $\frac{1}{4}$ corner between Secs. 7-8-137-
29 and set Galv. iron pipe
2" x 48" full length in ground
J. A. Downer.

Aug 3, 1914. Cont. Walden Twp.
P.M.

with a concrete base 6'x2'x1'
of a 4 to 1 mixture. We drive
to sec. corner 7-8-17-18-137
- 29 and dig trench 6'x4'x2'.
We unload sand here and
quit for night. Over night
with Pollock.

J. A. Donner.

Aug. 4, 1914 Con't Walden Twp.
A. W.

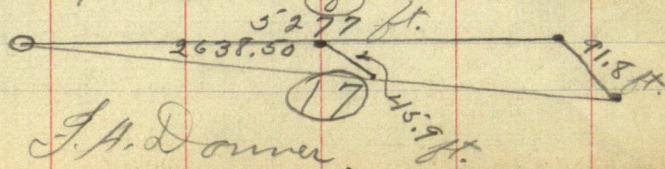
Curo calls Pollock by phone and tells him to bring team, myself & outfit to Jenkins. We go out to retrace transit lines run by Gates.

Rechaining the random line between Sec. 8-17-137-29. Curo & Donner chainmen. 300 ft. Chicago Steel tape. @ 2638.5 E. find Hub.

@ 5277 " " from which the true iron corner of Secs. 8-9-16-17-137-29 sets South $33^{\circ}44'E$. 91.8 ft.

Correcting back:

@ 2638.5 we run south $33^{\circ}44'E$. 45.9 ft. and set Hub & tack for true $\frac{1}{4}$ corner between 8 & 17-137-29. Donner @ Gendusain.



J. A. Donner.

Aug. 4, 1914, Cont. Walden Trip.
P.M.

Retracing Gates transit line beginning @ the corner of 7-8-17-18-137-29 and following south.

At 2640 the new $\frac{1}{4}$ corner established by Gates sets 13.18 ft. S. & 22.00 ft. West.

At 5270 S. the true corner to sec. 17-18-19-20-137-29 sets 26.36 S. & 44.00 West

Beginning @ new corner set by Gates @ corner 17-18-19-20-137-29 we follow Gates transit line east @ 1000 E. find Hub

@ 1320	E	"	"
@ 15 +	"	"	"
@ 18 +	"	"	"
@ 27 +	"	"	"

I meet Cur & team at main road and quit for night. Over night @ Pollocks.

J. A. Donner.

Aug. 5, 1914, Cont. Walden Twp.
A. M.

Wm Jokela, Lester Pollock
& myself drive to corner
of Secs. 17-18-19-20-137-29
and set Galv. iron pipe
2" x 45" 2 ft. in ground and
made a mound 2 ft.
above ground.

We drive to $\frac{1}{4}$ corner
between 17-18-137-29 and
put in concrete block
2' x 4' with spike in center
for $\frac{1}{4}$ corner. Big rock
could not dig down.

We drive to Sec. cor.
7-8-17-18-137-29 and
set Galv. iron pipe
2" x 45" 3 ft. in ground
in a concrete base
4' x 2' x 1'. No cap. Spike
at bottom for anchor.

We drive to $\frac{1}{4}$ corner
between 7-8-137-29
and set Galv. iron

F. A. Donner,

Aug 5, 1914 Cent. Walden Twp.
A.M.

2" x 48" full length in
ground in a concrete
base 4' x 2' x 1'. No cap.
Spike at bottom for anchor.
We quit for dinner.
Dinner with Andersons.
P.M.

We set $\frac{1}{4}$ corner between
Secs. 7-8 and take the
following bearing trees to it.
Cisp. 6 N. 89° W. 128.8 ft.
Oak 4 N. $37^{\circ}32'$ E. 75 ft.

We drive to $\frac{1}{4}$ corner
between 8-17-137-29 and
set Galv. iron pipe 2" x 48"
full length in ground in
concrete base 4' x 2' x 1'. No
cap. Spike @ bottom for
anchor. We take the
following bearings to it.
Oak 12 S $32^{\circ}31'$ W 69.15 ft.
Oak 10 N. $6^{\circ}9'$ W 118.2 ft.

S.A. Dinner,

(42)

(15)

Walden Twp
137-29

Aug. 5, 1914. Cont. Walden Twp.
P.M.

We drive to center corner
Sec. 17-137-29 and @ 2640 E
find Hub. I set up over
Hub and looking west
I find an old back sight
used by Gales and I
use this for my back
sight and run East
157.90 ft. and drive a
spike for Hub. I set
up over this spike
and using the same
back sight I turn
90° which brings the
magnetic needle to 8°
var. north. I set a Hub.
16.70 ft. north on this
line for true center
corner of Sec. 17-137-29.

We quit for night.
Over night with Pollock.

F.A. Danner.

Cong. 6, 1914 Cont. Walden Twp.
A.M.

Oscar Sorkiaho joins us.
We drive to center corner
of Sec. 17 - 137-29 and run
north on 9° var.

@ 375 N. set temp. Hub.

@ 1387 " " " "

@ 1532.2 " " " "

@ 2622.7 " " " "

This temp. line runs
17.50 ft. west of the true
 $\frac{1}{4}$ corner

I set up over true $\frac{1}{4}$ cor.
and from 9° var. turn 90° W.
and intersect temp. line @
2622.7.

Correcting back:

Temp. Hub @ 375 goes east
2.50 ft. right angle from temp.
line. Quit for dinner. Dinner
at Pollock.

P.M.

I set over true center
corner of Sec. 17 and using
F. A. Donner.

44

(17) Walden Twp
137-29

Aug. 6, 1914. Cont Walden Twp.
P.M.

Hub 250 ft. east of temp. Hub
set @ 375' for back sight
I run true line south
and set road centers to
 $\frac{1}{4}$ corner.

L.A. Donner

Aug. 7, 1914. Cont. Walden Twp.

Curo, I & Geo. Neuman
take Pollock's team and
drive to swamp and take
levels until 2 o'clock.

Dinner in shed.

Curo & I take train
from Pine River to Walker.
I get room @ Chase Hotel.
Over night @ Chase Hotel.

Record No 422.

L. A. Donner.

Aug. 8 1914. Working for State.

Cino and I leave
Walker on 9.30 train for
Sanatorium. Arr @ 10
o'clock.

We look over notes
and plott which we
brought along from office.
Dinner @ Sanatorium.

We take two men and
boat and row over lake
and look for corner.
Cino goes back to Walker
on 4.45 train I stay @
Sanatorium over night.

Aug. 9, 1914 Cont. for State.

I walk over Sec. 35234
and check over iron
corners and find they are
all O.K. as put down
on plott.

S. A. Donner

Working for State Time Sheet.

August

F.A. Danner	8	1	1
Expences	150	0	
J.W. Curo	1	0	

September

F.A. Danner	1	2	3	4	5	6	7	8	9	10	11	12
Expences	0	1	0	1	1	0	1	1	1	1	1	1
J.W. Curo												1/2

(2)

State San
142-31

47

F.A. Danner.

Aug. 19, 1914 Working for Cass County,
P.M.

I set up over temp.
Hub. @ 2722.45 and Cont.
North. @ 3525.5 set temp. Hub.
@ 4350 enter lake.
@ 4800 leave same
@ 48+50 ft. set temp. Hub.

This temp. line runs 34.1
ft. east of true sec. corner
of 7-8-17-18-140-30. I
set over true corner and
right angle over and
intersect temp. line @
5318.9. var. 9°

We walk back and
look for mittness corner
for $\frac{1}{4}$ corner between secs.
17-18-140-30 but are
unable to find any.
Quit for night. Over
night @ Lake View Hotel.

Donner Transitman,
Donner and Geo. Meills
Chainmen.

J. A. Donner.

②

17-140-30
Cass & Road
Hackensack

49

Aug. 11, 1914 Cont. Cass County.
A.M.

I set up over temp. Hub.
@ 2722.45 and turn right
angle west.

We set temp. Hub. @ 2722.45
West 17.45 ft. We continue
west 199 ft. from true
line and set Hub.

I set up over this Hub.
and using the true Hub.
17.45 ft. west of temp. Hub.
@ 2722.45 for back sight
I turn right angle south
and set true Wittner
corner 83 ft. south.

The true $\frac{1}{4}$ corner between
17-18-140-30 falls in lake.
I set Wittner corner with
following bearings.

Big Rock with point $S 28^{\circ} 40' W$ 37.4 ft.

Oak 47.3 $17^{\circ} E$ 26.1 ft.

Donne transitman.

Donne & Geo. Meills
chairmen.

J.A. Donne

Aug. 11, 1914. Cont. Cass County.

A.M.

We walk to Sec corner of
17-18-19-20-140-30 and
then follow the line east & west.
Just east of the swamp I set
up transit and work myself
on line until I am on a
9° var with true corner
of Secs. 17-18-19-20-140-30
established by John Curo.
Quit for dinner. Dinner at
the Lake View Hotel.

P.M.

I set up over point
established by me just
before dinner and using
true Sec. corner of 17, 18-
19-20 for foresight we
run thru swamp.

@ 13 set temp. Hub.

@ 14 set temp. Hub.

We continue east on 9°
var.

@ 40 we set temp. Hub
J. A. Donner.

Aug 11, 1914. Can't Cass County.
P.M.

@ 41+50 set temp Hub.

I right angle from this
Hub and run north 210 ft.
and set Hub.

I off set 210 ft. here to
get across the lake. I set
up over Hub @ 210 ft. N. and
using temp. Hub @ 41+50 E
for back sight I turn 90° E
Quit for night. Over night
@ Lake View Hotel.

Aug 12, 1914, Cont. Cass County.
A.M.

I set over Hub @ 210 ft
north of temp. line and
right angle east.

@ 950 ft. set temp. Hub.

@ 1000 ft. " " " "

I set over Hub @ 1000 ft E
and right angle south

@ 210 ft set temp. Hub.

I set up over this Hub
and Continue east on
temp. line using 9° var.

We find old witness
corner and B.T. which
check with my field notes.

I set over witness corner
and right angle south on
9° var and intersect temp.
line @ 5227.1 ft. E and
5.35 ft. south of old
witness corner. This old
witness corner stands
30 lks north of the
tree of Secs. 16-17-20-21

J. P. Danner

Aug 12' Cont. Cass County.
A.M.

-140-30.

Correcting back

We set true $\frac{1}{4}$ corner of
the west half of Sec. 17-
140-30. south 3.6 ft.

Donner transitman. Donner
and Geo. Miell chainmen.

P.M.

We walk to sec. corner
7-8-17-18-140-30 and find
it O.K. with all the B.S.

I run temp. line east on
7° var.

@ 217.7 set temp. Hub.

@ 837.6 " "

Quit for the night. Over
night @ Lake View Hotel.

H. A. Donner.

Aug. 13, 1914. Cont. Cass County.

A.M.

We continue line east

@ 2081 set temp Hub.

@ 2782 " " "

@ 3317.9 " " "

Quit for dinner. Dinner ~

@ Bert Brokaw pd. ⁹25-

P.M.

Continuing line east.

@ 3443 enter lake

@ 3703 leave same

@ 4012.9 set temp Hub.

We run to 4500 and

quit for night. Over night

@ Lake View Hotel.

J.A. Down.

Working for Cass County Time Sheet

August, Dec. 17-140-30

EA. Donner	10	11	12	13	14	15	16	17	18	22	23
Expenses	1	1	1	1	1	1	0	1		$\frac{1}{2}$ AM	1
Geo. Miel	$\frac{1}{2}$	1	1	1	1	1	$\frac{1}{2}$	0	1		
Jim Miel	$\frac{1}{2}$	1	1	1	1	0	0	0			
J.W. Curo	0	0	0	0	0	0	0	1		$\frac{1}{2}$ AM	1

Bills put in for work up to Aug 17-1914.

⑧ 17-140-30
Cass Co Road

33-

E.A. Donner.

17-140-30
Pass Co Road

Aug. 14 1914 Cont. Cass County.

A.M.

We continue line east.
 @ 4644.1 set temp. Hub.
 @ 5257 " " "

We look for Sec. corner
 8-9-16-17-140-30 but are
 unable to find any. My
 notes call for one white
 pine and we find an
 old white pine snag the
 only W.P. around.

I set up @ this stump
 and turn angle call
 for by my notes and chain
 distance and set stake.
 I set up over this stake
 and turn angles and
 chain distances called
 for by my notes and find
 four stumps badly burnt
 which check with angle
 and distance call for by
 my notes. I set true corner
 of Secs. 8-9-16-17-140-30

J. H. Donner.

(10)

17-140-30
Cass Co Road

57

Aug. 14, 1914 Cent. Cass County.
A.M.

quit for dinner @ Lake View.
P.M.

I set up over true Sec.
corner of 8-9-167-140-30
and take new bearings true
as follows.

J. R. 5 N. $81^{\circ}34'E$ 55.5 ft

Cak 4 S. $23^{\circ}10'E$ 22 ft.

var. 9°

I right angle from true
corner on 7 var and
intersect Comp. line
@ $52^{\circ}56.9'E$ and 54.2 ft.
south of true corner.

Correcting back,

Hub @ 2081 goes north 20.8 ft.

" " 1314.45 " " 14.55 ft.

Donner transits and. Donner
and Geo. Miell chainmen.

Quit for night. Over night
@ Lake View Hotel.

J. A. Donner.

58

⑪

17-140-30
Ross Co Road

Aug. 15, 1914 Cont. Cass County.
A.M.

We start @ true $\frac{1}{2}$ corner
between the north and north
west $\frac{1}{4}$ corners of Sec. 17-
140-30. and run south
on 9° var.

@ 6 S set temp. Hub.

@ 962.3 " "

Int temp. Hub on other
side of lake. I turn 79°
west and set Hub @ 448 ft.
I set up over Hub @ 440
and using Hub @ 962.3 S
for back sight I turn
to Hub across lake and
read a angle of 70° 42'.

Quit for dinner @ Lake View.
P.M.

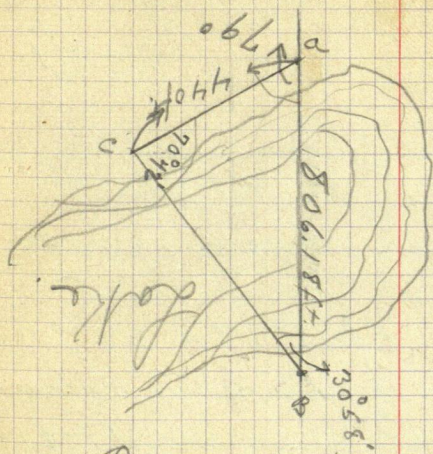
It rained in the forenoon
and we did not work much.
In the P.M. I did not go out
for it started to rain and
looked as tho it would
rain all day.

J. A. Danner.

(12) 17-140-30
Cass Co. Road

59

793.25



Over night @ Lake View.

Aug. 16, 1914.

Sunday all day nobody
worked.

J. A. Donner.

Aug 17, 1914 Cont. Cass County.

A. M.

I continue line south.
J W. Curo comes out about
10.30 and we run south
and hit east and west
line between Secs. 17 & 20,
9.75 ft. west of true $\frac{1}{4}$ corner.
We walk to $\frac{1}{4}$ corner 17-20-
140-30 but are unable to
find corner.

Quit for dinner @ Lake View A.M.

P. M.

Curo and I make out
time for the time worked
on County road for Cass
County. I sketch map of
Sec. 17-140-30 for Curo
to show commissioners
@ Walker tomorrow.
I go out to Jim Mcell and
get outfit and come to
Hackensack. I take chain
over to have repaired.
Over night @ Lake View.
J. S. Danner.

Working for C. E. Hamm and 140-30 Time Sheet

①

Hammond Townsite

61

17 49 45

18 19 22

1 1 1/2

0 0 1/2

Frank. A. Donner

J. W. Curo

Aug 18, 1914. Make survey of
town sight for C. E. Hammond.
A.M.

I walk out to M.C. between
Sec. 18-19-140-30 and find iron
pin for M.C. established by
J. W. Curo, which U.S. notes
call for following bearing tree
N. P. 7 S. 57° E. 25 lks
W. P. 10 N. 35° W. 27 lks.

Curo notes call for following.

J. P. 3 N. $12^{\circ} 25'$ E. 85 ft.

I set up over M.C. and check
J. P. 3 N. $12^{\circ} 25'$ E. 85 ft. but
for the others I get as follows.

N. P. 7 S. $55^{\circ} 55'$ E. 15 ft.

W. P. 10 N. $40^{\circ} 7'$ W 16.5 ft.

var. 9°

I run from M.C. S. $10^{\circ} 57'$ E.
@ 483.4 ft. I check distance
for N. W. corner of town sight.
I set up over this corner
and run $57^{\circ} 49'$ E and @ 200 ft.
I check distance to N. E. corner.
Hammonds Plot calls for and
J. L. Downer.

Aug. 18, 1914. Cont. for Hammond,
angle $N 57^{\circ} 45'$

Quit for dinner @ Lake View.
P.M.

I set up up N.E. corner and
run 300 ft. $S 32^{\circ} 19' E$ and check
distance. Angle call for is $S 32^{\circ} 15' E$,
var 9°

I set up this corner and run
118 ft. $S 18^{\circ} 27' E$. check distance.
Angle call for is $S 18^{\circ} 13' E$.

I set over this corner and
run 100 ft. $S 12^{\circ} 29' E$ and check
distance. Angle call for is $S 12^{\circ} 13' E$.

I set up over this corner and
run 202.5 ft. $N 77^{\circ} 10'$. Notes call
for $N 77^{\circ} 36'$ 200 ft.
var. 9°

I set over this corner and run
150 ft. $N 12^{\circ} 13' W$. and check distance.
Angle called for is $S 12^{\circ} 24' E$.

I set over this corner and run
300 ft. $N 32^{\circ} 19' W$. We check distance
Angle called for is $S 32^{\circ} 15'$ var. 9°

Quit for night @ Lake View.

J. A. Dwyer

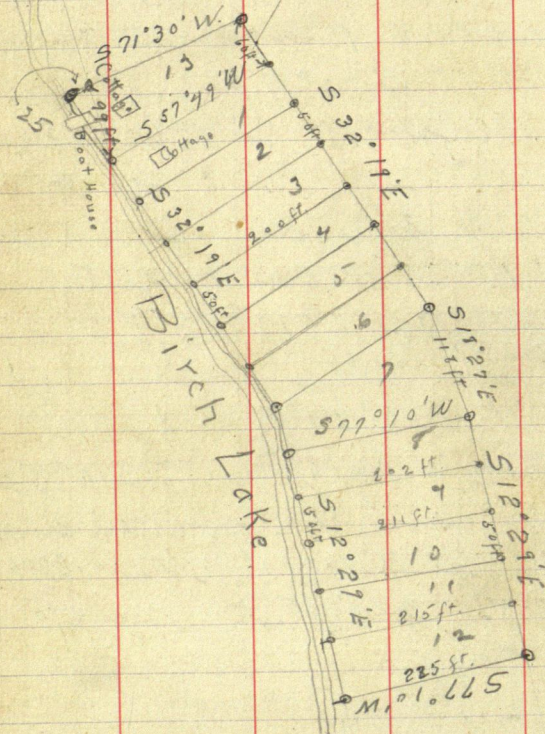
64. m.e

(4)

140-30

See page 69. P.M.

S 10° 57' E
483.4 ft.



Donner transitman. Donner
and Hammond chainmen All
angles turned from 9° var.

J. A. Donner

(5)
140-30

(65)

Aug. 19, 1914, Cont. for Hammond.
A.M.

I set over N.E. corner of lot 1 and run 60 ft. $N 12^{\circ} 19' W$. and set iron pin 2' x 1" full length in ground for the true N.E. corner of lot 13. I set over N.E. cor. of lot 13 and run 193 ft. $S 71^{\circ} 30' W$. and set iron pin for N.W. Cor. of lot 13. Iron pin sets 6 ft. from water edge.

I set over point 30 ft. south east of the N.E. cor. of lot 13 and run 342 ft. $N 61^{\circ} 41' E$. and set Hub. thence 195 ft. $N 22^{\circ} 55' E$. to center of main road. This is for a temp. road.

I set up over S.E. corner of lot 9 and continue line $S 12^{\circ} 19' E$

@ 50 ft. set iron pin

@ 100 " " " "

@ 150 " " "

G. J. Donner

Aug 19, 1914 Cont. for Hammond.
 A.M.

I set over iron pin @ 50 ft.
 and run $S 77^{\circ} 10' W.$ 211 ft. and
 set iron pin 10 ft. from water.
 I set over iron @ 100 ft and
 run $S 77^{\circ} 10' W.$ @ 215 ft. set iron
 10 ft. from water edge. I
 set over iron @ 150 ft. and
 run $S 77^{\circ} 10' W.$ @ 225 ft. set
 iron pin 8 ft. from water.
 Quit for dinner @ Lake View.
 P.M.

I set up over every corner
 of each lot and check the
 angle given on the temp.
 plott on page 64. var. 9°

Starting from the N.W. cor.
 of lot 1 I measure the
 distance from the iron pin
 to the water edge as follows.

9 ft. 10 ft. 12 ft. 5 ft. 1 ft.
 5 ft. 11 ft. 10 ft. 12 ft. 12 ft.

I then make plott. finish
 @ 4.30. Over night @ Hotel
 St. J. Down.

Aug. 20, 1914 Working for Hiram Twp.
A. M.

John W. Curo come to Hackensack
on 9.55 train from Walker.
Jack and self check over bills
and look up notes for the
work in 140-31.

P. M.

Bert Gallepe takes Curo
and I to Victor Martin
and from there Mrs. Martin
takes us across the lake
and leave us. John and
I start out and retrace
old transit run by Todd.
We look for M. C. corners
on Birch lake but are
unable to find any. We
walk across to Ten Mile
Lake and are unable to
find any M. C. there.

Mrs. Martin get us and
takes us to Hackensack.
Over night @ Lakeview.

J. Donner.

68

② Hiram Twp
140-31 ^{and} Cass Co ①

Aug. 21, 1914 Cont for Hiram Twp.

Curo goes across lake with
Pete ^{Limberg} to find some corner
and I stay @ Hotel to rest
my limbs for it looks bad
and I'm afraid poison will
set in.

Aug. 22, 1914 Work for Cass 140-30.
A.M.

Curo and I go out to
 $\frac{1}{4}$ corner between 18-19-140-30
and find old U.S. blaining
trees from which we
put in a 48" x 2" Galv.
in pipe full length
in ground. With cap on.
for the true $\frac{1}{4}$ corner
between Sec. 18-19-140-30.
It starts to rain heavy
and we quit and go
to Lake View Hotel
Dinner @ " " "

Frank Donner.

Aug. 22, 1914 Cont. for Cass County.
P.M.

We go to M. C. No. 22 and find the old N. S. bearing trees from which we set a 48"x2" Galv. in pipe full length in ground with cap for the true M.C. corner No. 22.

2 P.M.

We start and check over some of my work I done for Hammond We set iron pin 25 ft. north east of the north west corner of lot 13 on line with the north west corner of lot 1 and M.C. No. 22 running S. $10^{\circ}57'E$ on 9° var.

We set iron pin 298 ft. west of true $\frac{1}{4}$ corner between Sec. 18-19 for the center of road which Hammond intends to build to his Townsite.
Quit for night @ Lake View.

T. J. Donner.

Aug. 23, 1914 Cont. for Cass County.

Curo and I work on time sheets and get them all in, then we go out to the $\frac{1}{4}$ corner of Secs. 7, 17-20-140-30 and find old bearing tree from which we set a 48" x 2" Galv. iron pipe full length in ground with cap for the true $\frac{1}{4}$ corner between Secs. 7, 17-20-140-30 and take new bearings as follows:

We walk west to the temp $\frac{1}{16}$ corner on the west half of Sec. 17 and from the temp. hub set @ 1300 E. we set a 48" x 2" Galv. iron pipe with cap, full length in ground for the true $\frac{1}{16}$ corner of west half of Sec. 17-140-30. Quit for night @ Hotel.

Frank Donner,

72

Norman
Road

①

138-30-31

Boss Co Road
Forbes
Range Line

Aug. 24, 1914.

A.M.

Curo and I leave
Hackensack on 10.02 train
and come to Pine River
It is raining so we stay
@ Hotel. Dinner @ Travelers Hotel.
P.M.

Curo get livery and
we go out to J. Normans
and I leave my outfit
there and we walk to
the south west corner
of Sec. 31 - 138-30 and
establish the true Sec.
corner from the old B.L.S.
which we find.

Curo goes back to Pine
River and I stay @ Normans
for supper and over night.

248

F.A. Donner.

Norman
Road

138-30-31²
Cass Co Road
Forbes
Range Line

73

August 1914

24 25 26 27 28 29 30 31

Frank A Donner	1	1	1	1	1	1	1
Expenses	25	0	0	0	0	0	0
J. W. Curo	1	0	0	0	1	1	1
John Norman	0	0	1	1	1	1	0
Ellis Norman	0	0	1	1	1	0	1
Arcl Norman	0	0	1/2	1	1	0	1
Erick Norman	0	0	0	1	1	0	0
Marcellus Degerstrom	0	0	0	1/2	1	0	0
Norman Team	0	0	0	0	0	1	1
John Maulster Auto	0	0	0	0	2.00	0	0

248

Aug 25, 1914.

Tuesday and it rained
all day nobody worked.

Aug. 26, 1914.

A.M.

Donner, John Norman and
Ellis Norman walk to the
south west corner of Sec. 31 -
138-36 and set 45" x 2" Galv.
iron pipe full length in
ground for the true south
west corner of Sec. 31 and
the true south west corner
of T138 R. 36.

Starting from a point
9.6 ft. west of true corner 9
run north on $7^{\circ}30'$ var.

@ 10 + 50 enter swamp

@ 13 + 20 set temp. $\frac{1}{4}$ corner

@ 13 + 20 leave swamp.

@ 2350 set temp. Hub.

@ 2640. " " $\frac{1}{4}$ corner

@ 3200 " " Hub.

@ 3350 ³³⁵⁰ cross creek ¹⁵ 6 ft. wide.

Aug. 26, 194

A. M.

Quit for dinner @ Normans.

P. M.

Continue north on 7°30'00".

@ 41 enter swamp.

@ 45 leave ..

@ 45+30.6 N. set temp Hub.

@ 48+34 N " " "

@ 50 enter swamp.

@ 53 set temp Hub.

We look for the N.W. corner
of Sec. 31-138-36 where U.S.
notes call forTam 9 N. $4\frac{1}{2}^{\circ}$ E 552 lks.. 5 S 76° W 212 $2\frac{1}{2}$ N $39\frac{1}{2}^{\circ}$ W 12 ..We are unable to find this
corner so we continue north.

@ 64+30 N leave swamp

@ 66+54.7 N set temp Hub.

Quit for night. Over
night at Normans.

J. A. Downer.

248

Aug. 27, 1914

A.M.

Erick Norman joins us
and we continue north

@ 73+58.8 set temp. Hub.

@ 74+25 enter swamp

@ 87 leave ..

@ 87+57 set temp. Hub.

@ 93+94 " " "

Quit for dinner @ Norman.

P.M.

Marcellus Degustrom joins
us and we continue north.

@ 103+51N, set temp. Hub.

@ 105+89N " " "

We find old U.S. corner
of the north west corner
of Sec. 30 and two old
stumps for B. T. S.

True corner sets 77.4 ft.
east of temp. Hub @ 105+89 N.

248

I set over true corner
and run north on $7^{\circ}30'$ var.

@ 14+28N set temp. Hub.

@ 18+36.1 " " "

F. H. Dornier.

138-30-31 (6)

78

Township 138 Range 36 County Cass.

30-31

(00064)
(2)

(0001167)
(1 1/2)

6

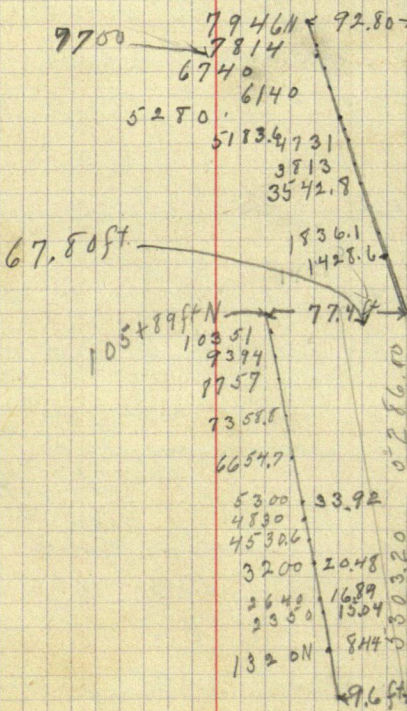
7

18

19

30

31



F. A. Donner, Transitman 248

80

P. M. ② 138-30-31

Aug. 27, 1914

@ 19+25 enter Swamp.

@ 26+10 N we set temp.
 1/4 corner of the west half
 of Sec. 19-138-³⁰36 and
 quit for the night. Over
 night @ Normans.

Aug. 28, 1914

We continue north.

@ 35 leave Swamp.

@ 35+42.8 set temp Hub.

@ 38+13 " " "

@ 47+31 " " "

@ 51+36 " " "

@ 52+80 " " Sec. Corner.

quit for dinner @ Normans.

P. M.

We continue north.

@ 61+40 set Hub. A south
 of small lake. In order
 to get distance across lake
 we set Hub. B on north side
 of lake and from Hub.
 A I turn N 60° W and

H. A. Donner,

(8)
138-30-31

81

Aug. 28 1914.

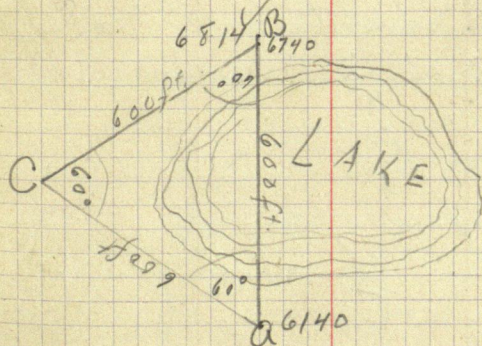
P.M.

@ 600ft. set Hub.

From Hub C @ 600 ft. and
backsighting on Hub A I
turn $N 60^{\circ} E$ and @ 6740 N
intersect temp line which
is 74 ft. south of Hub B.

Distance across lake added
to Hub A. @ $61+40 = 67+40$

Hub B sets 74 ft. north of this
intersecting.



I set over Hub @ 68+14 N and
backsighting on Hub A. @ 6140
I continue north.

@ 78+14 set Hub A ¹⁸² 25 ft from
water edge. In order to

J. Down 248

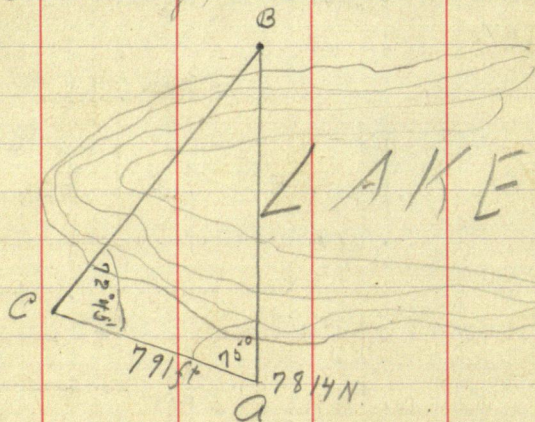
(82)

⑨
138-30-31

Aug 28, 1914

P.M.

get distance across lake
 I set Hub B. on north side
 of lake 40 ft from water edge.
 Setting over Hub A. @ 78+14 N
 and sighting on Hub B. I
 turn $N 75^{\circ} W$ and @ 791 ft set
 Hub C. I set over Hub C
 and sight on Hub A. @ 78+14 N
 and turn on Hub B on north
 side of lake and read $72^{\circ} 45'$
 Quit for night.
 Over night @ Normans. with Curo



Donner transitman. Donner
 and John Norman chainmen.

248

J.A. Donner.

(19)
138-30-31

(83)

Aug. 29, 1914

A.M.

Carr, Donner, John Norman
and team drive to corner
of 7-12-13-18-138-30-31
at which point U. S. notes
call for the following B. & S.
W. & S N $20\frac{1}{4}^{\circ}$ E 135 lks.

Spur 6 N 54° W 70 lks.

N. P. 20 S 25° E 170 lks.

Frank Woodck shows us
a round 4 inch. Hub. with
tack previously established
by County Surveyor Moulster
for the true corner over
which we set transit and
take the following new B. & S.
S. N. P. Stump 145 $65^{\circ} 36'$ W 36.02 ft.
vac. 7° turn from true line
south. Tack in base of Stump.
No other bearings near.

Going to the $\frac{1}{4}$ corner bet.
Secs. 13-18-138-30-31 where
U. S. call for.

I am 6 N $48\frac{1}{2}^{\circ}$ W. 42 lks.

J. A. Donner. 248

Aug 29 1914 Cont. Cass. County
A.M.

Tam 5 N 22° E 20 lks.

We find a square stake
set by A. W. Moulster for
true $\frac{1}{4}$ corner at which
point we set transit and
take new bearings viz.

Dead Tam 85 63° 45' E 81.9 ft.

" " 105 28° 9' W 78.95 ft.

Two tack heads @ bottom..

var 6° 45' Set red flag.

Taking transit nearly
one half mile north to
a point north of lake
and with red flag set
@ corner 7-12-13-18 we
work transit on line
and set a line of Hubs
and stakes from Tamarack
lake north to corner of
Secs. 7-12-13-15-18-30-31

248 which is a distance of
about $\frac{1}{4}$ mile nearly
all swamp. This $\frac{1}{4}$ mile
of line has been previously cut
out by Moulster but not connected.

Quiet for night heavy rain coming
up Jack Norman & team, Curo
and Donner get in full day for Cass
Co no pay for Model.

Curo & Donner staying with Isaac
Norman.

Aug 30, 1914 Cont. Cass County:

Correcting Range Line.

At the $\frac{1}{4}$ corner between Secs.
13-18-138-30-31 we pull
up the wood stubs and put
in its place a Galv. iron
2" x 48" driven over a six
foot tam piling till the
top of the side sticks 18"
above swamp level. No cap.
Drove quite solid. This
corner sets about 50 ft.
south of water edge and
100 ft. from solid ground.

J. A. Donner. 248

Aug 30, 1914 Cont. Cass County.
 At a point on our
 random line 7946 ft.
 north off the corner to
 Secs. 19-24-25-30-138-30-31
 the $\frac{1}{4}$ corner between Secs.
 13-18 sets east 92.80 ft.
 Correcting south [001167]

7946	goes east	92.80	
7700	" "	89.86	
7000	" "	81.69	
6740	" "	78.66	
6140	" "	71.65	
5280	" north	17.33	to
5297.33	thence east	61.87	to
	true corner to Secs. 13-18-19-24		
	138-30-31 @ which		
	point we set Galv. iron		
	pipe driven three ft. in		
	ground for the true Cor.		
	with new B. & S. sig. & cap.		
	Asp. 5° N 48° 45' E 56.40 ft.		
	" 7° N 66° 30' W 60.35 ft.		
	Two stacks set with		
248	H. A. Dornier.		

Geyley compass and 100 ft.
steel tape var about $6^{\circ}30'$.
Fragments of old B.T.
stumps check out
proportionally for course
and distance.
Correcting still South.

5183.6	goes east	60.50 ft.
4730	" "	55.21 "
3815	" "	44.50 "
3542.8	" "	41.34 "
1736.1	" "	21.42 "
1428.6	" "	16.67 "

@ all points we drive heavy
Hubs and set flat stakes
marked Road, Center, True
Range Line.

At the Corner to Sec.
19-24-25-30-138-30-31
we pull up the rotted
wood stake previously
set by County Surveyor
Curt and put in it.
A.F. Donner. 248

place a 2" x 45" Galv. iron
pipe driven three ft. in
ground for the true
corner (No cap or anchor
rod) New. B.T.S. viz.

N. P. 145 66° E 45.18 ft.

W. P. 125 36° 15' W. 84.68 ft.

Two tack heads. var. 630°
set with Gurley compass.

Correcting the south
two miles of Range line
between Twp. 138-30-31

We began our random
line @ a point 9.60 ft. west
of the S.W. corner of Sec.
30-138-30 and @ a point
103.89 ft. north, the iron
corner to Secs. 19-24-25-
30-138-30-31 sets east
77.40 ft.

1248

Correcting south [10064]
J. H. Downer,

10589 goes east $66.80 + 9.6 = 77.40 \text{ ft}$
 10351 " " $66.25 + 9.60 = 75.85 \text{ ft}$
 9394 " " $60.12 + 9.60 = 69.72 \text{ ft}$
 8757 " " $56.04 + 9.60 = 65.64 \text{ "}$
 7358.8 " " $47.10 + 9.60 = 56.70 \text{ "}$
 6654.7 " " $42.59 + 9.60 = 52.20 \text{ "}$
 5303.20 " " $33.94 + 9.60 = 43.54 \text{ "}$

@ which point we drive a
 2" x 48" Galv. iron pipe over
 a 6 ft. tam piling until
 the top of the pipe sets
 24 inches above swamp
 level. No cap on iron corner.
 Set red flag. This corner
 has previously been
 established by Euro.

Correcting still south

4830 goes east $30.91 + 9.60 = 40.51$
 4530.6 " " $28.99 + 9.60 = 38.60$
 3160 " " $20.22 + 9.60 = 29.82$
 2640 " " $16.89 + 9.60 = 26.50$
 2350 " " $15.04 + 9.60 = 24.64$
 1320 " " $8.44 + 9.60 = 18.04$

Quit for night @ Normans
 J. H. Downer. **248**

138-30-31

Aug 30, 1914.

Jack Norman and team
takes Curo and Donner,
Ellis and Arle Norman
to the North end of
cutting and we connect
the three and one miles
south all get in full
day for Cass County.

See page 73 for time.

248

F. H. Donner.

Norman Road

(B)

State San ①

138-30-31 141-31

91

Aug. 31, 1914.

Jack Norman takes Curo and I to Pine River. We have dinner @ Traveler's Hotel in Pine River. We take 3.45 train and I go to State Sanatorium and Curo go on to Walker. Supper @ San. Over night @ San.

Sept. 1, 1914. Working for State.
A.M.

Curo sends me plott of 141-31 and I call up Curo @ 10 o'clock and Curo says I should come to Walker in P.M. and get notes for work.

P.M.

I walk to Walker and get notes for work.

Over night @ San.

J. A. Downer

248

Sept. 2, 1914. Working for State.
A.M.

I walk over to M.C. No. 39-141-31 but am unable to locate true M.C. I walk over to Wignam on point and the squaw takes me over near true M.C. and shows me a stake which she says was the true corner set by Government Surveyors whom she had to survey her land. (the point is S. 50° E.) I look for B.T.S. but find none. I walk toward Sec. corner of Secs. 1-2-11-12-141-31. Curo comes from Walker and meets me. We find posts and B.T.S. for M.C. No. 40 and the true Sec. corner of Secs. 1-2-11-12 plainly marked.

Quit for dinner @ San.

(3)
141-31

93

Sept. 2, 1914. Cont. for State.
P.M.

I get two men from San and Olson takes us to cor. of Secs. 1-2-11-12. We have trouble with engine coming over.

I set up over corner of Secs. 1-2-11-12 - 141-31 and run north on 8°38' var.

@ cross M. & I. track

@ set temp. Hub. No. 1

@ " " " No. 2.

Quit for night @ Sanatorium.

Sept. 3, 1914 Cont. for State.

It is very cold and Brooks tells me he must have the men to cut wood all day.

I leave the San about 7.45 and take the 9.30 train for Hackensack and get back to San a little after six on freight train. Over night @

San.
J. Downer Time sheet
Pg 47

94

④
141-31Sept. 4, 1914, Cont. for State.
A.M.

I get two men from
San and come out to
work. I set up over temp
Hub No. 2 and backsighting
on true Sec. corner we
continue north on $8^{\circ}30'$ var.

@ set temp Hub No. 3.

@ " " " " 4

@ " " " " 5

Quit for dinner in shade.

P.M.

@ set temp. Hub No. 6

@ " " " " 7

@ " " " " 8

Quit for night.

Over night @ Sanatorium.

F. F. Donner. Transition

Pg 47 for Time Sheet

F. F. Donner.

141-31 (5)

95

Sept. 5, 1914. Cont. for State.
A.M.

I set over corner of Secs. 1-2-
34-35 - 141-31 & 142-31 and
run south on $20^{\circ}40'$ var.
@ $34+46.2$ set Hub.

quit for dinner @ San.

P.M.

Cont. south with one man.

@ $14+99$ set Hub.

About 3 o'clock I quit and the
man takes all the tools
and sharpens them for they
are very dull.

Sept. 6, 1914 Sunday
nobody works.

Sept. 7, 1914 Can't for State.
A.M.

I set over Hub @ 14+99
and continue south on 20° 40' in.
We run to about 20 S and
Curo comes out from Walker
on 7.30 train and he says
it was of no use to run
this line any further.
We walk to true corner
and start a new line.
Quit for dinner.
P.M.

Curo and I look over
notes. Curo walks to
Cyphers and I take a
 $\frac{1}{2}$ holiday because men
will not work in P.M.
Labor Day.

J. A. Downer.

Sept. 8, 1914 Cont for State.
A.M.

Starting @ the true sec. cor.
of Sec. ² 4-2-34-35-141 & 142-31.
Run south on $20^{\circ}40'$ var.

@ 3+27.4 set Hub.

@ 10+89.4 " "

@ 14+65 " "

Quit for dinner @ Sanatorium.
P.M.

We continue south

@ 23+39.4 set Hub.

@ 30+9.4 " "

Quit for night.

Over night @ Sanatorium.

See page 47 for line sheet

F. F. Downer

98

⑧
141-31Sept. 9, 1914. Cont. for State
A.M.I set up over Hub @
30 + 9.4 S and continue south
@ 36 + 65.7 set Hub.Quit for dinner @ San.
P.M.We continue south to
about 40 and quit for
rain and drizzle about 3.30Sept. 10, 1914. Cont for State
A.M.It rained all night
and is drizzling quiet
hard so we do not go
out to work. Men say
brush is too wet to
work in and it was
awfully wet.The brush is awfully
thick and all full of dead
trees so I can't go very
fast with only two men.see pg 47-
in line

J.H. Donner

(9)
141-31

99

Sept. 10, 1914. Cont. for State.
P.M.

We continue south

@ 45+99.8 set Hub.

@ 5280 " "

@ 5372 " "

We look for Sec. corner of
Secs. 2-3-10-11-141-31 but are
unable to find it. We quit
for night over night @ San.

Sept. 11, 1914, Cont for State.
A.M.

Curo comes on midnight
train. Curo takes one man in P.M.
and goes out to corner of Secs.
2-3-10-11-141-31. I take
two men in A.M. and go
out to $\frac{1}{4}$ corner of Secs. 1-2
- 141-31 and continue north
@ 34+96.8 N set Hub from
which True M.C. sets
N 39°48'W 906.7 ft. van 8'30
Quit for dinner.

100

141-31 (10)

Sept. 11, 1914 Continue for State
P. M.

I take one man and
chain random line from
Sec. corner of Secs. 1-2-11-12
- 141-31 north to Hub @
34+96.8 set about 100 ft.
from water edge. I set
Hub @ 2640 on random
for temp $\frac{1}{4}$ corner.

I set over $\frac{1}{4}$ corner bet.
Secs. 1-2-141-31 and turn
from true random N 39°
48' W. and run about 100 ft.
quit for night.

See page 47 for time sheet

(11)
141-31

102

Sept. 12, 1914 Cont. for State.
A.M.

I set up over Hub @ 1031.3 N
of true corner of Secs. 1-2-11
-12-141-31 and turn N. $39^{\circ}48'W$.
268.46 ft. from random line.
I set over Hub @ 268.46.

I set over point on hill
and work on line bet.
Hub @ 268.46 and true cor.
of Secs. 1-2-11-12-141-31. I
start true line north.

quit for dinner.

For time See Page 47.

P.M.

Curo takes my place and I catch
4.45 P.M. train for Cohasset
via Barnstable.

103

① 143-25 Cohasset

Sept 12-1914 Saturday
P.M.I am working for Wahnema Trwp
143-144 Rg 25.Curo takes my place at the
State Sanatorium survey and
I catch the 4.45 P.M. train
Via M & S Ry to Benning

RR fare 71¢ 9,

Ar Benning 1 P.M.

supper & room N^o - at -
Hotel L. call for A.N. train
Hotel exp \$ 8.00Nati-
place this
if necessary
Curo

Sept 13-1914 Sunday

L. Ben @

P.M.

Via G.N. Ry Ar Cohasset

P.M.

Hiram Twp 140-31

Sept 30 - 1914 Wednesday

I am working for Hiram Twp
Setting iron section corners and
correcting up the road surveys
along Titus's line run
since Aug 19th 1913.

See father field books

Lv Walker @ 9.37 AM. RR fare 27[¢]
at Hack. and take dinner with
Gladys and the rest of the kids
P.M.

Lv Hack at 1 P.M. with Bert Gallop
in Wood and Gallop's launch
at Victor Martin's farm in Sec
14-140-31 at 11-30 PM and as
Victor Martin has to finish digging
his potatoes I stay in and finish
checking up old field notes
supper and over night with
Victor

Gallop + Wood have several
boat lining trips due from Hiram
Twp as they have not put in any
bill since 1913. J. M. W. Curo

Working for Hiram Tapp 140-31
Oct 1- 1914 Thursday

Victor Martin takes me in his launch to NW Cor of Birch Lake then goes back to Hack with the boat where he meets Mr. Allen.

I walk to Anton Linnibergs farm in Sec 12-140-31 where I get Anton Linniberg and lunch and we walk to M.C. No 21 on E. bank of Ten Mile Lake between Sec 1 and 12-140-31 where M.S. notes call for post and.

W.Pins 14 S 152 12 Lks = 7.92 feet

We find the stump of the old B.T. plainly marked from which I derive a back in a root for the true Meander Corner. 49°30' which is the course of the road line looking East along cut-out road line. Measurements taken to face of B.T. marker. Gully compass and 100' monarch steel tape. The newly cut-out road looking East is not cut out
John

140-31 Hiem

③ Oct 1-1914 Cont'd 106

quite far enough south at the west end.

Walking along the lake shore to the $\frac{1}{4}$ cor bet 11+12-140-31 previously set by me from one old N.E. 13T. stump we find a hub and lock still set for the line $\frac{1}{4}$ cor and the stump of the old 15 13T still standing N.E. plainly marked.

Walking half a mile south to Stake 2640 on Transit line where a stake sets for the line corner to Secs 11-12-13-14-140-31 where O's notes call for:

NP12S41 $\frac{1}{2}$ °W 50 Lks. distant

NP12N19°E 21 " "

NP10S41°E 37 " "

we find the roots of the old 13T's. check out perfect with a stake on transit line set 2640 ft south of the $\frac{1}{4}$ cor bet Secs 11 and 12-140-31

From the corner to Secs 11-12-13-14-140-31 we run north along the cutout transit line and at 240. feet we intersect Todd's E & W old Transit line at a point 9538.00 ft East of John W. Curo

107 140-31 Hiem ④ Oct 1-1914 cont'd

a stake marked 0.0. on the E.
bank of Ten Mile Lake near MC N° 24.

Following Todd's transect
line west to a point 5280 ft E
of MC N° 24. an old E & W blazed
line lays South. 73. feet

Following Todd's old
transect line still further west
we find two transect lines
cross at a point 2754 (about)
1/4 N of 1/4 bet 14 and 15 and
4244.75 E of Stake 0.0. on E bank
of Ten Mile Lake near MC N° 24.

Victor Martin arrives at west
end of NW arm of Birch Lake with launch
and my dinner and in
P.M.

we walk to Elmer Blanchard's
house at NW cor of 15 where we get
Blanchard with Frank J.

Fredrick and learn and dine
with a load of Sec Cor. lines to
Cor of 8-9-16-17-140-31 previously
established by me where we pull
up the wood hub and put in
its place a 2x48 inch galvanized
Jahn W Euro

140-31 Hiram

⑤ Oct 1-1914 cont'd

105

iron pipe capped on top with N^o of sec
marked on top with punch and set
its full length in a 2½ foot mound
of black dirt and sailed for the time
Comer to Secs 8-9-16-17 140-31

This is also Meander Co N^o 27.

We then drive to MC N^o 26
on SW arm of Ten Mile Lake and
bet Sec 2 16 and 17-140-31

where US notes call for post and
Sp P 6 N 20° E 10 LKs

Sp P 6 S 38½° E 8 "

We find an old spruce stump
with a marks which may have been
on of the old US BTS but as it
leaves in the water we will not,
cut it out till some future time
as it is getting late and we have
a big crew.

We drive to ¼ cor bet.
15 and 16-140-31 previously set by
me where we pull up the wood
kub and put in its place a 2x48
inch galvanized iron pipe capped
on top and punch marked "145"
and with 60th spike for anchor rod
J. W. H. Co 1910

109 / 140-31 Hiem © Oct 1-1914
contd

and driven its full length in
the ground in a six inch mound
of dirt for the true $\frac{1}{4}$ Cor bet Peer
15-16 - 140-31

Friedrich takes a load of ours half
a mile South and we walk to the $\frac{1}{16}$
Cor S of MC N-25, previously established
by me and as it sets close to a
big stump we decide to have Blanchard
blow out the stump before setting the
iron $\frac{1}{16}$ so we take the following
new bearings to the true $\frac{1}{16}$ Cor bet
Oak 8 N 50° 20' E 26.98 l To flat spot at box
" 8 S 33° E 27.37 } 0°

set with Gurley Compass and 100' tape
we also take pole bearing to two
stakes and instruct Blanchard to
blow out big stump in the morning

Walk to NW end of Birch lake
and go home to Victor Madson in
launch in 14 minutes

Over night with Victor

Fine warm weather

John W. Curo

Time Sheet Working in Hiram Twp
Sept 49/14

140-31
Self

John W Curo

Wood & Gallop

Boat Every

Oct 1914

1st 2 3 4^{SUN} 5 6

John W Curo

Victor Martin

"Lunch

Anton Linniberg

Oliver Blanchard

Frank J Friedrich & Team

Mrs Thilda Martin Board Curo

26 27 28 29 30
0 0 0 0 1/2 PM
0 0 0 0 \$1.00
M-F-M Board Curo 12

⑦

140-31

Hiram Twp

110

Hiram Twp 140-31

Oct 2nd 1914 Friday

Elmer Blanchard blows out the big stump at $\frac{1}{16}$ South of MC 25. then with Anton Linneberg walks South half a mile where they meet I and Victor Martin

We go to the $\frac{1}{16}$ cr previously established by me North of the cr to Secs 15-16-21-22-140-31 where we pull up the wood stake and drive in its place a 2x48 inch galvanized iron pipe capped on top and mtd $\frac{1}{16}$ 8" and with spikes anchored thro bottom. driven its full length in a 4 inch mound of dirt for the true $\frac{1}{16}$ cr so of $\frac{1}{4}$ cr bet Secs 15 & 16-140-31

Following a transit line previously run by Guy A Todd from the true corner to Secs 15-16-21-22-140-31 West

@ 1320 find spike @ 2640 w final stake near $\frac{1}{4}$ bet Secs 16 & 21 where US notes call for a 16 inch White Pine bearing true 1550 LKS West

John W Carr

140-31 Hiram

9 Oct 2-1914
could

112

We find the stump of the old bearing
line plainly marked but it sets
only 3605.45 feet West of the
Cor to 15.16.21.22-140-31 and as
US notes gives the distance as
3663.00 feet we find distance
57.55 ft short.

And the stump sets 47.50 ft N.
of the transit line
Correcting East

01571. as to East }

01317 as to North }

3663.00 goes East 57.55 to 3605.45
and North 47.50 to old BT stump
on true Sec line

At 2640 N we Cham East
41.57 to 2598.43 W. Then North
34.22 ft where we drive a 2x48
inch galvanized iron pipe

Capped on top and marked "145"
with punch marker. driven over
a 5 foot tamarack piling well
down into the wet meadow until
top of iron is 2 ft above bog level
then throw a two foot mound of
black peat bog to top of iron

John W. Carr

113 140-31
Hiram

10 Oct 2-1914
Curtis

which is the true $\frac{1}{4}$ cor bet Secs.
16 & 21-140-31 a RR spike set by
Toldd for the temporary $\frac{1}{4}$ cor bet E
16 & 21.

Coming East to spike 1320 west
we chain East 20.77 feet to 1299.23
West Then north 17.11 feet where
we drive a 2x48 inch galvanized
iron pipe capped on top and marked
with punch "1165" with spike
anchor rod thru bottom driven its
full length in a 6 inch mound of
dirt for the true $\frac{1}{16}$ cor west of
the cor to Secs 15-16-21-22-140-31

Walking East to the cor of
15-16-21-22-140-31 we pull up the
wood stake previously set by me
for the true corner and put in its
place a 2x48 inch galvanized
iron pipe capped on top and
marked with punch "15-16-21-22"
driven over a 3 foot tam piling
set with top of iron 2 ft above
swamp level and mound of moss
piled to top of iron.

Following a new plowed
farm across

140-31

Hiram Top

①

Oct 2-1914

Contd

114

road to the $\frac{1}{4}$ bet Secs 15 and 22

140-31 we pull up the wood stakes previously set by me for the line

$\frac{1}{4}$ cor and put in its place a
 2x4 8 inch galvanized iron pipe
 capped on top and marked with
 punch "45" and driven over a
 6 foot piling until the top of the
 rim is two feet above swamp level
 then pile mound of dirt evenly to
 top of iron

Following a transit line run by
 Aug A Todd from the $\frac{1}{4}$ corner bet
 15 and 22, a mile East to the $\frac{1}{4}$ cor
 bet 14 and 23 140-31 we find that
 Todd's notes gives the distance as
 5312.60 feet where US notes call for
 5283.30 being 29.30 ft too long
 and at 5312.60 E the $\frac{1}{4}$ bet 14 &
 23, sets South 84.50 ft

Correcting.

05546 as to East }

01590 as to South }

5283.30 US goes East 29.30 to
 5312.60 Then South 84.50 to $\frac{1}{4}$
 bet 14 and 23-

John A. Curo

115 140-31 (12) Oct 2-1914
Hiram Turk cont'd

At 1321.65 E being US chain for camp.
1/6 we chain East 7.33 to 1328.98
Then South 21.15 ft where we drive a 2x48
inch galvanized iron pipe capped on top and
with punch marked "116 3" set its full length
in the ground in a bunch mound of dirt
and is the line 1/6 corner East of the 1/4 bet
Secs 15 & 21. 140-31 Spike set by Todd
Bear West 0.83 ft and N 0.03 ft.

At 2643.30 E, we chain East 14.66 to
2657.96. Then South 42.30 at which point
we drive a six foot piling over which we
drive a 2x48 inch galvanized iron pipe
capped on top and punched "14-15-22-
23," and is the line corner to 14-15-
22-23-140-31 at which point the old
stake still stands and the remainder of
rods of old bearing lines will check out
for course and distance

The water is deep here and we leave
iron sticking up two feet with no
dirt to make mound

We could have used a longer piling
as the mud is soft and deep at this
point Spike set by Todd Bear
West 1.66 ft and North 0.05 ft

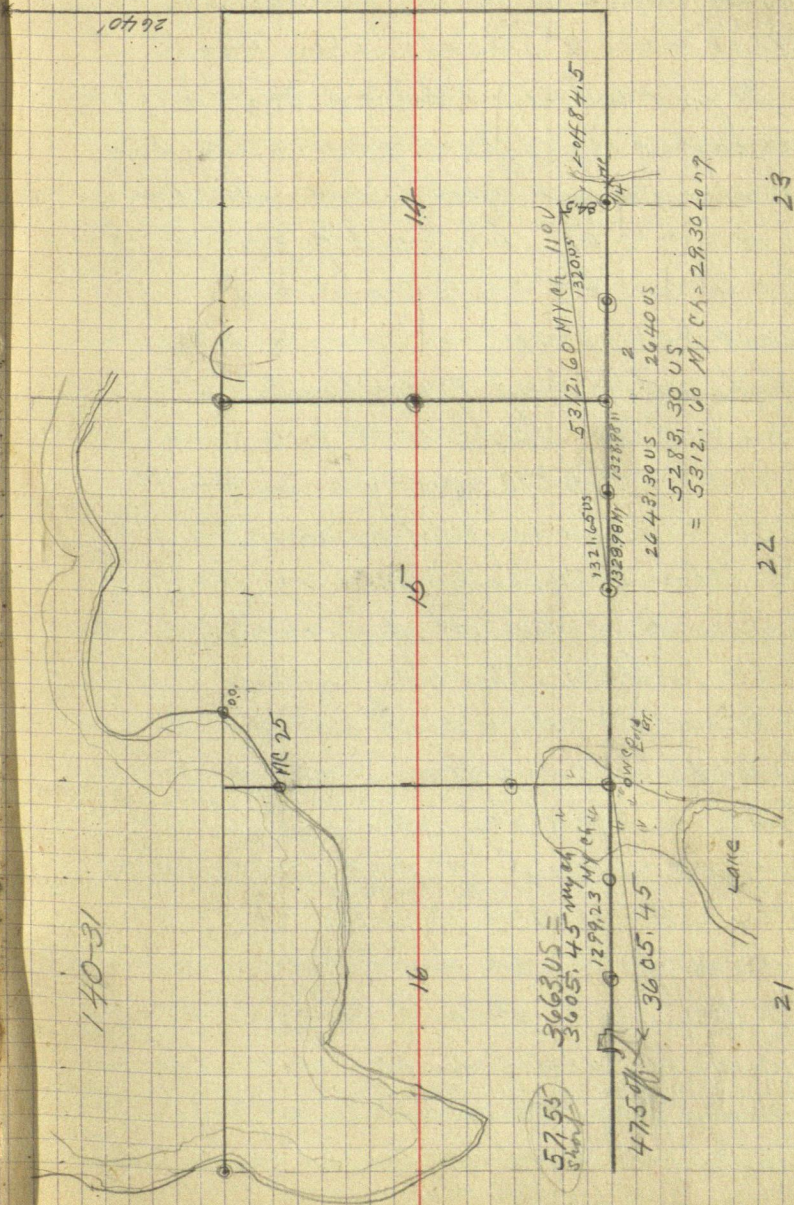
James Carr

140-31

13

Oct 1914

116



117

140-31
Hiam

⑭

Oct 2-1914
Contd.

continuing still further East to
3963.30 which is the US distance we chain
21.98 ft East to 3985.28 Then South
63.36 feet where we drive a 2x48 inch
galvanized iron pipe, capped on top and
punch marked "116 S" set its full
length in a 6 inch mound of dirt for the
line 1/16 west of the 1/4 corner bet Secs
14 and 23- 140-31

Sprink set by Guy Todd bears
West 0.83 feet and North 0.01 feet.

At 5312.60 E we run South
84.50 ft where we find an iron pin set
from the old US bearing lines by me for
the line 1/4 corner bet Secs 14-23-137-31

We pull up the iron pin and put in
its place a 2x48 inch galvanized iron
pipe capped on top and punch marked
"145" and set its full length in a
one foot mound of dirt for the line
1/4 Cor bet 14-23- 140-31

Quit for night Still staying with
Victor Martin Frank Wagoner comes
in evening with launch with telephone
message from Frank Sommer at Cahoon
asking me to come to walk and meet Sommer
at Grain with his clothes. No go
Curo

(15)

140-31.
Huron

118

Saturday Oct 3-1914

Still working for Huron Twp 140-31

Victor Martin with launch takes me to NW end of Birch Lake and we walk to Elmer Blanchard's where we meet Anton Linnberg and ^{Elmer} Blanchard and we all go to the $\frac{1}{16}$ South of Meander Cor N² 25-140-31 where Blanchard has just blown out a big 3 foot white Pine stump which was too near to the $\frac{1}{16}$ Cor. We find the $\frac{1}{16}$ post previously set by me still in place - we pull it up and drive a 2x48 inch galvanized iron pipe spike anchor rod thro bottom - capped on top and marked with punch " $\frac{1}{16}$ S" set its full length in the ground in which mound of dirt at line $\frac{1}{16}$ N of $\frac{1}{4}$ Cor but Secs 15 + 16 - 140-30. at NW end of new plowed road.

Going to W² C N² 25 we pull up wood stake previously set by me and drive 2x48" galv iron pipe on N. brink of sea wall, around which we pile $\frac{1}{4}$ cord of stones and leave ^{4 ft} iron 1 ft above stone pile. I mark iron cap

John W. Cuss.

(19)

Oct 3-1914
contd

(20)

140-31

with punch marker "US-MC-N^o 25" this is
line m.c. on the side of Ten Mile Lake Bet
Frac Secor 15-16-140-31

We then walk to Co of 10-11-14
15-140-31 where we begin the third
or fourth systematic hunt for the
Cormorant 9/50 M.C. No. 7

USNole's call for Post and following bearing trees;
White Pine 4N52E 840 LKS = 554.40 ft

" " 16S28½E 870 " = 574.20 "

Anton Limbick shows me a 2 foot
white Pine stump which he swears is the
N.E. bearing tree which he says was plainly
marked and scribed until Jack M^o Lin
cut it down a few years ago.

From this old NE stump I run S 52° W
554.40 ft and set stake 09° 30'

Thence S 28½° E 574.20 ft where we
find the second old QT stump which stands
3 feet south and about 10 feet E of it

We set the stake by flat chain from face
of both old stumps after which the old
stumps stand almost correct for
course @ 10° W

We drive a 2x48 inch galvanized
iron pipe capped on top and marked
John H. Curo

Oct 3-1914
Cont'd

(17)

140-31, Hiram

(120)

with a punch marker "10-11-14-15" driven
over a 7 foot laminar filing in mound of
bog for the true corner to Secs 10-11-14-15 T140
N7 31. set with Grady compass & 100' tape

Anton Linniberg - Victor Martin - & Elmer
Blanchard assist in setting this corner

Martin and Linniberg go to the 1/4
Corner bet Secs 14 and 15 - 140-31 where
they pull up the wood hat previously
set by me for the true corner and put
in its place a 2x4x8 inch galvanized
iron pipe capped on top and marked "1/4"
set in a mound of dirt for the true 1/4
Cor bet 14 & 15 - 140-31.

At a point 2637.40 ft North
of the iron 1/4 Corner bet Secs 14 and 15
the iron corner to Secs 10-11-14-15 -
140-31 sets East 103.80 ft at 90°
angle to Todd's old N & S transit line

At a point on Todd's E. and W.
transit line 4344.50 ft E. of stake
00. on Ten Mile Lake, the corner to
Secs 10-11-14-15 - 140-31 sets South
119.20 feet.

Hiram Twp^① 140-31 ①

124

Jan 8 - 1915

Friday

LV Jenkins on 3:25 P.M. Arrived
at Hack 4:30 P.M. where met Curo
Stayed @ Spains supper
lodging & Breakfast Th. 9th
Curo worked on field notes all day.

Jan 9 - 15 - SATURDAY -

I went over in Birch Lake
Twp 140-30 for a flag which
was left on our survey.
at Stony Lake LV Hack 7:30 A.M.
and got back 10:00 A.M.

I then walked to Birch Lake
Twp 140-30 Sec 12 + 13 where
I found Curo & Gorman. We
found M.C. on S.E. Cor of 12
Iron Set by Curo. We also
found Stake Set on N.E. Cor
of 13 M.C. Cor which was Set
by Bartlett which was 3 ft. to
the E of the true M.C. Cor. We found
old ~~st.~~ stumps which checked
out for Corse & measurement.
U.S. notes called for

Boz Bryant -

Minam Wp 140-30

125

Jan 9 - 1915-

washed temp hut for cow and
then walked over to
Anton Linneburg's Cur
& Norman went back to
Hackensack Caught 4:30 Train
to Walker where Charge
to go to Wilkinson

Ate dinner with Antone
Linneburg Antone could not work
in the after noon and
Victor Martin is in

the Cities on a visit so
I took Iron Cow from
Antone and went to
H.E. M.C. of 13 and set
Iron Cow where hut was
set. Hard cutting ground
was frozen so cut trench

I first cut a pole about
5 ft long and measured
out from E side of hut and
set a small stick thence
measured from S. side
of hut and set another
stake. I then cut trench

Boy Bryant

Nivarn Trip 140-31 (126)
Jan 9-1915⁽³⁾
Through the frost and set
Iron Ore from measurements
quit for night supper &
lodging with Antone.

Jan 10-1915 Sunday.

Sunday did not work had
Breakfast dinner & Supper
lodging with Antone.

Jan 11 1915-

Commencing at M.C. 14-140-31 Sw 13
run trip transit line to M.C. No
13. we then run transit line
N. and chained as we went.
did not do much in fore-
noon as we got late start
quit for dinner we commenced
where we left off and finished
transit line but did not get
all chained set cord wood
sticks for hubs and quit
for night. Missed Cor 4 in.

Jan 12-15

did not work in forenoon
Antone Linnenburg went
to town and Blackchard cont

Ray Bryant

(127)

Hiram Twp 140-31 Sec 12

Jan 12 - 1915

did not come over now
Send anyone in his place
So layed up in forenoon
Blanchard came in afternoon
and we finished Chaining
transit line.

Blanchard came to work
in afternoon we finished
Chaining transit line
and set temp $\frac{1}{4}$ Cor on
East side of Sec 12 140-31
and also Cor of Sec in
lake. and quit for
night.

Left transit & spars
Cottag and other Surviving
Set hub @ 334.85' N. @ 25° 24.75'
Set hub. @ 2773.00 Set hub.
@ 3983.50 Set hub @ 4636.50
Set hub did not drive
hubs but used Cordwood
sticks for hubs.

Stayed at Mrs Kinneberg's
Jan 13th 1915.
Commencing @ S.W. Cor

Doc Bryant Cont. on Pg 6

Time Sheet. Working for Kieran Twp 140-31
Jan 1915

Bryant

Jan 8 9 10 11 12 13 14

488 0 0 0 0 0 0 0

Bryant Board

Jan 9 - 1915

9 10 11 12 13 14 15

16 17 18 19 20 21 22

Bryant Board

Jan 9 - 1915

9 10 11 12 13 14 15 16 17

Ray Bryant

Clinton Lumber

Willow Market

Clamor. Blanchard

Bryant Lumber

Robert Johnson

John O. Curo

NOTE:

This timesheet
re-written on page
132. This book
Curo

Ray Bryant

129

York Fox Stream Twp

140-31

Jan 13 - 1915

of Sec 12 - 140-31 run EAST
 Set Transit on Iron Cor
 set by Curo. back Sited
 on Iron corner West $\frac{1}{16}$ Cor
 set by Curo. and run Transit
 line East to Temp Cor
 on Birch lake. previously
 set by me. set 60 pennie
 spikes for hubs.
 did not chain but
 finished running $\frac{1}{4}$ in
 dir. south set pickets
 on lake. Arlene Linneburg
 Victor Martin and Bob
 Johnson. Brush men
 Roy Bryant Transit man.
 quit for night.

Jan 14. 1915.

Commencing at point center
 of 11-12-13-14-140-31 Chained
 East on Transit line run
 by me to center of (13-14-23-24
 Sec.) set hub @ 563.65 @ 1459.05
 @ 2032.70 @ 2100 leave land enter
 lake @ 2640 set temp $\frac{1}{4}$ Cor on

lake @ 3576.00 Leave lake enter
point in lake @ 3600 Set Chain
Stake on point @ 3650 Leave
point enter lake.

we then finished Chaining
 $\frac{1}{4}$ transit line running
South. We then went to $\frac{1}{16}$ line
on west side of 12 and started
transit line South and quit for
dinner.

Finished transit line Antonio
Leineberg Dickie Martin &
Bob Johnson Brushmeyer
Prof Bryant Transit man.

Jan 15. Friday 1915

Saturday Jan 9th 1915

I am working in the survey of a wagon road for Hiram Twp. This Sec 12-140-31, and the Sec must be subdivided in order to locate the center of the NW 1/4.

Roy Bryant, John W. Curo and R.D. Gorman go to MC N^o 14 of T 140-31 on the south side of Birch Lake bet Secs 13 and 18 bet Twp's 140-30-31 where US notes call for:

Turn 4382 W 62 Lks (= 40.92 ft)

NP 145 17 E 144 .. (= 95.04 ft)

We find the stump of bath ated BTS from which we set the cor by flat chain from face of stump after which the stumps stand O.K. No course @ 9:00 we drive a wood hut for line MC N^o 14 and all walk to Anton Linnibergs to ask for crew.

Curo and Gorman go back to Hack and I take dinner with Anton.

P.M.

I work alone in P.M. pull up the wood hut and put in its place a 2x98" galv iron pipe for line MC N^o 14. Over night with Linnibergs. Roy Bryant

Time Sheet Working for Hiram Tab / 40-31

	Jan 1915																NOR											W										
	SUN	10	11	12	13	14	15	16	17	SUN	18	19	20	21	22	23	24	25	26	27	28	29	30	31														
Roy Bryant	1	0	1	1	1	1	1	1	1	0	1	1	1	1	1	0	0	1	1																			
Expense	0	0	0	0	0	0	0	0	0	0	0	0	0	0	0	0	0	0	0																			
John W Curo	1	0	0	0	0	1 1/2	1 1/2	0	0	1	1	1	1	1	0	0	0	0	0																			
Expense	0	0	0	0	0	0	0	0	0	0	0	0	0	0	0	0	0	0	0																			
RD Gorman	1	0	0	0	0	0	0	0	0	0	0	0	0	0	0	0	0	0	0																			
Anton Linnberg	0	0	1	0	1	1	1	1	0	1	0	1	0	1	1	1	1	1	1																			
Victor Martin	0	0	0	0	1	1	1	0	0	0	0	0	0	0	0	0	0	0	0																			
Elmer Blanchard	0	0	0	1/2 PM	0	0	0	0	0	0	0	0	0	0	0	0	0	0	0																			
Byer Treefeather	0	0	1	0	0	0	0	0	0	0	0	0	0	0	0	0	0	0	0																			
Robert Johnson	0	0	0	0	1	1	1	1	0	0	0	0	0	0	0	0	0	0	0																			
" Team																																						

WORKING FOR
VICTOR MARTIN
IN SEC 14

140-31

Notations if B been
transcribed correctly

Note: Continued on page 146 this book

WORKING FOR
VICTOR MARTIN
IN SEC 14

140-31

Noted by Hiram W. Brown
March 1st 1915

133

140-31

⑩

Hiram Twp.

Sunday Jan 10-1915 lay up.
at Linniberg

Monday Jan 11-1915

Roy Bryant Translman &
chairman 300' Chi steel life line
transit Byron Treefeather and Anton
Linniberg Gment Ch.

Cut out transit line on E side of
12-140-31 being West line of 7-140-30
Still playing with Linniberg

Tuesday Jan 12-1915

Victor Martin and Anton Ligo
Hack- to meet judge of Probate I can
get no crew till
P.M.

Elmer Blanchard arrives and we
Beg @ rion MC N^o 13- of 140-31
and follow transit line North to
a point 0.40 of a foot West of rion
corner to Secs 1-6-7-12-140-30-31

Then Beg at a point 0.40 of
a foot West of rion cor to Secs
1-6-7-12-140-30-31 chain South

Roy Bryant

Jan 12-1915
Cont'd

(11)

140-31
Hiems Twp

(134)

along cut-out transit line

at 466.75 Snow hut in road.

at 1320 Temp $\frac{1}{16}$ At 2225.10 Hat
2640 limp $\frac{1}{4}$ bet Sec 7 and 12 of
140-30 & 31 where US notes call
for post and:

WP 20 N 52 W 98 LK = 64.68 ft)

the tree is gone but we find an old
stake set by B B Bartlett which may
have been moved we ignore this
stake and continue south

@ 3984 Hat marked "3684"

@ 4636.50 Hat marked "4336.50"

4800 stake marked "4500"

@ 4930.40 old "HP" road stake set by B B G

@ 5001.15 intersection MC N° 13.

at 5017.32 limp MC N° 13.

True MC N° 13 sets North 16.17 feet

Correcting back [0003223]

1320. goes N 4.25 To 1315.75 and E 0.29 = $\frac{1}{16}$

2640 " N 8.51 To 2631.49 and E 0.19 = $\frac{1}{4}$

3960 " N 12.76 To 3947.24 and E 0.08 = $\frac{1}{16}$

(00008 E)

Roy Bryant

(135)

140-31

(12)

Hiram Tap

Wed Jan 13-1915

Beg at the iron corner to Secs
 11-12-13-14-140-31. back sight west
 on the line line, transit telescope
 and run East: on about ?
 At 563.65 spike for hub @ 1320 Temp $\frac{1}{16}$
 1459.05 " " " 2100 enter
 Birch lake which bears NE & SW
 2640. Temp $\frac{1}{4}$ on ice (spike)
 3576. enter little sharp point
 coming from the North 3600 stake
 3650 2^d point: 3960 Temp $\frac{1}{16}$ on ice
 5280 limps SE cor of 12-140-31
 on ice

From a transit line run
 along the line East boundary of
 Sec 12-140-31 from the NE corner
 South thro MCN^o 13 and
 extended out on on the ice
 Keeping in line with the East side
 of Sec 12 we intersect our transit
 line coming from the west at a
 point 5362. feet East of of the
 SW cor and 478.85 feet South
 of MCN^o 13- of 140-31. Lumbering-
 Martin-Johnson + Bryant work all day.
 Roy Bryant

Thursday Jan 14th 1915

Reg lat the south end of our old
transit line about the center of the
west half of sec 12-140-31 and
continue old transit line south
without chaining

Victor Martin - Anton Linnberg
Robert Johnson Cut brush
Roy Bryant transitman.

Curo walks from Hack to
Anton Linnbergs then out to
our line stays half an hour till
dark and walks back to Hack
Still playing with Linnberg
Quiet for night

Friday Jan 15-1915

We continue south to about the
West 400 Corner bet secs 12 and 13
140-31. without chaining

Curo comes out from Hackensack
with Bob DeLury and takes dinner
at Linnbergs
P.M.

Chain in NW Cor of 12 & quit in snow
storm

Roy Bryant

137) 140-31

(17) Hiarn Turp

Saturday Jan 16-1915

Beg @ pt 82.81 ft East of the
West 1/6 bet Secs 1 & 12-140-31
Chain South over cut out transit
line @ 280.40 Hub @ 558.15 Hub
1031.40 Hub 1572.30 Hub 2065.25 Hub
2590.50 Hub 3061.60 Spike-3784.25 ^{Spikes}
— enter open marsh fl Ls same
@ 5366.90 spike

Beg at a point marked 00. being 21.80
feet west of long pt and 33.41 ft East of
line 1/4 cor. we chain South on cut out
line thro Cen of Sec 12-140-31

@ 444.20 Hub 958.70 Hub 1463.50 Hub
1760.70 Hub 1950 enter swp NE & SW

2560 enter creek Runs west 2600

Ls Creek. Runs East. 3260 enter

Creek-runs South 3410 Ls creek

which runs SW: 3600 stake Ls marsh

3754.60 Hub on West pt of sharp hill

3900 enter swamp 3967 unit pnc

ETW. 4200 stake 4700 enter

Buck Lake ETW. 5400 station

in. Beg @ NE cor of 12 chain South
461.75 snow Hub 2225.10 Hub 3684 Hub 4356.50 Hub
Quit for night

Sunday June 17-1915 lay up. Roy Bryant

Monday Jan. 18-1915

Placing transit over iron $\frac{1}{4}$ bet sec
11 and 12 - 140-31 back sight South
on true line: transit theodolite
and run North @ 300 stake 310.70
stake temp MC N^o 22 - where US notes call
for: Spruce P. 8538E 45 Lks =
NP 12 12 N 37 $\frac{1}{2}$ E 22 " =

We do not find them and continue North
@ 575 stake on bank about 585
enter Ten Mile lake 600 stake on
ice at 2787. intersect point
on ice in line with N. b. day of sec
12 - 606.40 feet West of MC N. 21.

Setting transit on MC N^o 21.
back sight East on true line and
run West on ice in Ten Mile Lake
@ 300 - 600 - stake on ice @ 606.40
intersect point on ice in line with
west b. day of sec 12. 2787. ft N of
MC N^o 22.

Going to MC N^o 13. Chain to on ice
1029.100 to MC N^o 14 - 140-31 = 1013.76 US.
and is 15.34 too long. Bryant Lakes supper
and overnight at Spain's Cuts lake dinner
at Linnbushs Aulnis works. John W Curo
Curo & Bryant

Tuesday Jan 19-1915

Bryant gets Breakfast and dinner and
Again Curo assists in figuring corrections
P.M.

Curo + Bryant Go to MC N^o 13-140-31
Chain South on ice @ 398 Lks = 262.68 ft
Set limps SE Cor of sec 12 - Thence
1138 Lks = 751.08 ft added to 262.68
= 1013.76 ft set limps MC N^o 14 -
True run MC N^o 14-140-31 sets
South 15.34 feet at 1029.10 inclines
MC N^o 14, and is 15.34 ft too long

Correcting back [001513] S
262.68 goes South 3.97 ft 266.65 we
place a stake "A" on ice for SE cor of 12

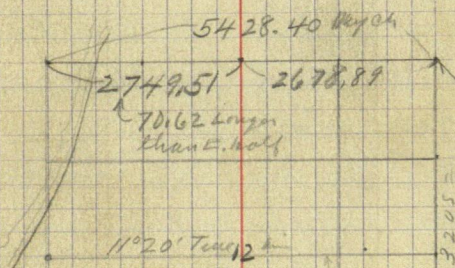
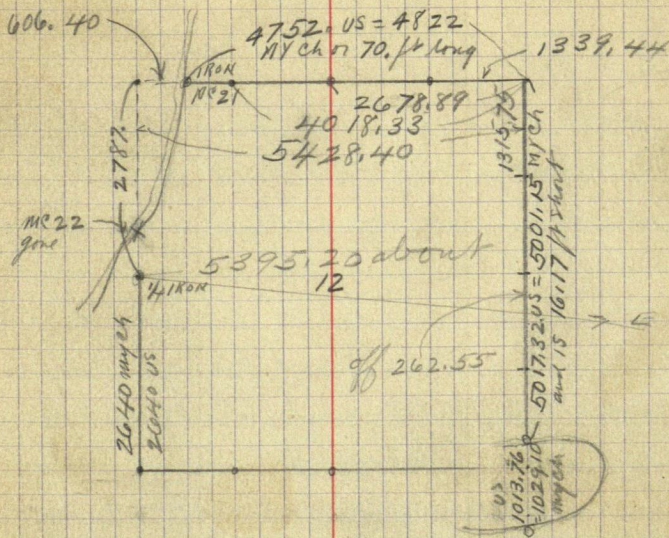
Extending the line South
in line with East side of sec 12 from
MC N^o 13 we chain 266.65 ft to stake "B"
which sets 8.70 ft West of stake "A"

At a point on random line 5370.70
ft E. of SW Cor of 12 turn 90° angle and Chain
212.20 ft North to Point "A" and at 5362.00 ft
Chain N. 90° angle to pt "B" which would
give the length of the South line of 12-140-
31 as 5362.00 ft. Bryant goes to Lumberings
for supper & over night Curo goes back to back
Jahm W Curo + Bryant

140-31
Huan Turp

(17)

140



on segline 12-13
All the 40's
are equal
and are
1340.5 ft. each
E.B. Horst 1921

1357.94 1357.94 1323.06 1323.06
2715.88 5362 2646.12

1357.94

2715.88

4038.94

8.70

13

14

15

16

17

18

19

20

21

22

23

24

25

26

27

28

29

30

31

32

33

34

35

36

37

38

39

40

41

42

43

44

45

46

47

48

49

50

51

52

53

54

55

56

57

58

59

60

61

62

63

64

65

66

67

68

69

70

71

72

73

74

75

76

77

78

79

80

81

82

83

84

85

86

87

88

89

90

91

92

93

94

95

96

97

98

99

100

101

102

103

104

105

106

107

108

109

110

111

112

113

114

115

116

117

118

119

120

121

122

123

124

125

126

127

128

129

130

131

132

133

134

135

136

137

138

139

140

141

142

143

144

145

146

147

148

149

150

151

152

153

154

155

156

157

158

159

160

161

162

163

164

165

166

167

168

169

170

171

172

173

174

175

176

177

178

179

180

181

182

183

184

185

186

187

188

189

190

191

192

193

194

195

196

197

198

199

200

201

202

203

204

205

206

207

208

209

210

211

212

213

214

215

216

217

218

219

220

221

222

223

224

225

226

227

228

229

230

231

232

233

234

235

236

237

238

239

240

241

242

243

244

245

246

247

248

249

250

251

252

253

254

255

256

257

258

259

260

261

262

263

264

265

266

267

268

269

270

271

272

273

274

275

276

277

278

279

280

281

282

283

284

285

286

287

288

Wednesday January 20th 1915

20th

Correcting the South boundary of the 12-140-31 as follows: In order to run the N+S Can line of 12 with due parallelism to the side lines and as there is no crook in the side lines we will for convenience consider the South side the same length as the North side. The East half of the N side is 2678.89 and the West half of the N. side is 2749.51 Total 5428.40 and we will consider the measurements of the South side the same as the total length of the North side is 5362.00 ft it would be 66.40 ft shorter than the North side.

By proportion [0012232]

2678.89 would be short 32.77 and is 2646.12 which is the length of E half of S. side

2749.51 is short 33.63 and is 2715.88 which is the length of the West half of the South boundary

Correcting line North [0395748]

at 5362.00 E. we then N 90° 21' 20"

4038.94 E Chain N 159.74 to East 1/10

bet 12 and 13-140-31 then N @ 208.40
from sea wall 48.66 ft N. of 1/10
Jahn N curs. - Bryant

Jan 1915
Meals got while in survey of Fish loads in from Twp 140-31

SUN

	8	9	10	11	12	13	14	15	16	17	18	19	20	21	22	23	24	25	26	27	28	29	30	31
Spain																								
Curo																								
Bryant																								
Gorman																								
Curo																								
Bryant																								
Marlin																								
Blanchard																								

SUN

SUN

SUN

SUN

SUN

SUN

SUN

SUN

SUN

SUN

SUN

SUN

SUN

SUN

SUN

SUN

19

142

Note: Brot from Page 132

Note: Continued on Page 146 This book

143) Jan 20-1915
Cont'd

(20)

Huang Tap
140-31

at 2715.88 E we chain 90° angle North 107.49
ft to line $\frac{1}{4}$ bet Secs 12-13-140-31 stake on line
At 1357.94 we chain North
53.74 and set 60 d spike for line
West $\frac{1}{16}$ cor bet 12 and 13-140-31

At about 5442.8 going south
thru Cen of West half of Sec 12 -
our random line intersects our
E & W random line at a point
about 1598 feet East of the Sec
Corner of sec 12-140-31

Chaining south thru cen of Sec
12 - @ 5344.5 the line $\frac{1}{4}$ bet
Sec 12 & 13 (on line) set West
83.80 feet

Correcting N & S line $[.0093357 + 33.41]$

00. gals West	33.41 +	00	To line N & S Line
444.20	" "	33.41 + 4.15	37.56 " " "
958.70	" "	33.41 + 8.95	42.36
1463.50	" "	33.41 + 13.66 =	47.07 ok
1760.70	" "	33.41 + 16.44	49.85 ok
2700.00	" "	33.41 + 25.21	58.62 "
3754.60	" "	33.41 + 35.05	68.46
5344.00	" "	33.41 + 49.89	83.130

Curo walks to Hook - Bryant with Loring

John W Curo & Bryant.

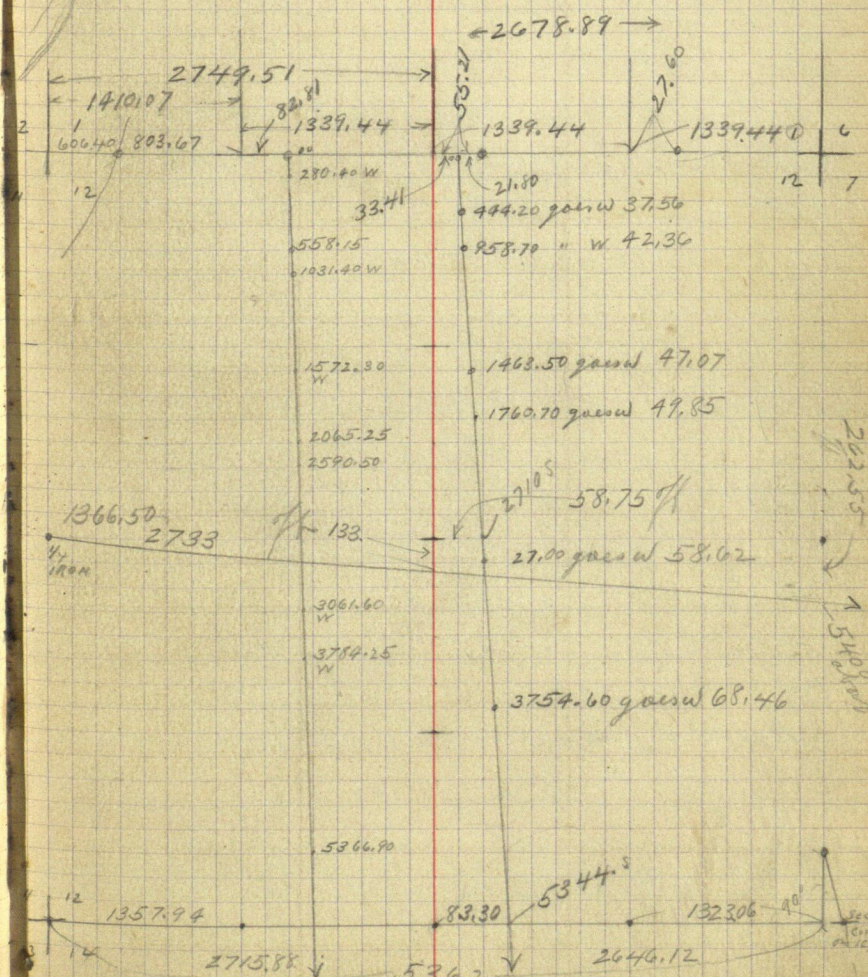
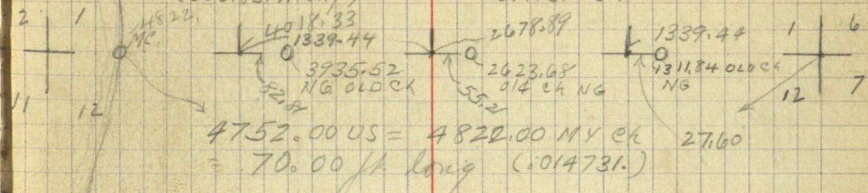
Huam Tap

(21) 12-140-31

144

First Correction
(.006183. Wrong)

Second Correction
.014731. OK.



John W Curo

145)

Hiram Twp (22) 12-140-31

Thursday Jan 21-1915

^{containing} Subdivision of Sec 12-140-31

to locate Twp road for Hiram Twp

Curo goes back to Wilkinson

Byrant and Linnberg work alone

Begin on 1/4 lot Sec 11-12-

140-31 Chain East over cut out haven't
time find hubs or followers

@ 377.10 Hub: @ 740.75 Hub @ 1199.30
Hub marked "1197" @ 1200 dike @ 1701.15 Hub 2243.60 Hub
on sea wall NE & SW about 2275 enter
Swamp NE SW @ 3400 stake 2605
enter creek runs S + NE 2640 LV

2700 stake @ 3650 LV meadow NE & SW

3710 about Hub @ 5002, about Hub

East half mile chained roughly

@ ^{5400. about} 5360 the 1/4 cor on E. side of 12

140-31 sets North 262.55 ft.

Spoke set by Byrant set North

265.57 of 3.62 ft too far North and
a foot or more too far East.

Note: The above is chained by Curo &
Linnberg because I could not make
out Byrant's notes which were written
on a loose leaf Linnberg & I checked this
this Feb 6-1915

John W Curo

Time Sheet Hiram Turp Sec 12-140-31 Feb 1915

	1	2	3	4	5	6	7	8	9	10	11	12	13	14	SUN	15	16	17	18
John W. Curo				1	1	1	SUN 1/2	0	1	0	0	0	0	0	0	1/2	1	1	
Anton Lammberg				0	0	1	0	1	1	0	0	0	0	0	0	1/2	1	1	
Robert Johnson															0	0	1	1	
Team																			1.75

(23)

Hiram Turp Curo

146

Feb 1915 Meats gnt by Curo Sec 12-140-31

	1	2	3	4	5	6	7	8	9	10	11	12	13	14	SUN	15	16	17	18
Lammberg Curo					1	1	1	1	1	1	1	1	1	1	1	1	1	1	1
Martin																			
Curo																			
Johnson																			

Note: Continued FROM page 132 & 142 this Book

Friday Jan 22-1915

Linnberg and Bryant put in iron spikes along East bdy of 12-140-31 and W. bdy of 12-140-30 as given on page 134 of this book

Floe Transit 300' chain

Very Cold Bryant stays over night with Linnberg This is the last day Bryant works on 12-140-31

Saturday Jan 23rd

Bryant gets breakfast with Anton Linnberg and gets Johnson & learn to take him in to Hook- they meet Victor Martin on Birch Lake who takes Bryants survey outfit to Martins Bryant goes to Hook and stays at Spains and to the dance Saturday night

Sunday Jan 24th 1915

John W. Curo

(25)

Hiram Twp
140-31

148

Monday Jan 25th 1915

Bryant works for Victor Martin Beg @
 ion 1/4 bet 14-23-140-31 run North $9^{\circ}30'$
 to 1/4 bet 11 & 14 Martin & Albert Thomas
 brush men Bryant transitioned did not
 chain line Quit for night

Tuesday Jan 26-1915 Still working
 for Victor Martin Beg @ ion 1/4 bet
 14-15-140-31 run East $9^{\circ}30'$
 $3/4$ of a mile + quit for dinner
 P.M.

finished cutting East to Birch Lake
 then went to Cor 11-12-13-14- and
 start South @ $11^{\circ}10'$
 Quit for night

Friday Jan 27th

Bryant gets 50^c from Cuss and catches
 P.M. freight home to Jenkins

John H. Cuss

Thursday Feb 4th 1915

Curo and Gorman leave Sparrow store where Gorman has staid all night and walk to Victor Martin - Gorman and Victor go West to Survey Sec 16 - Curo figures on correction of lines run in Sec 12-140-31 Curo walks to N. side of Birch Lake gets Aloe Liannit left by Bryand and gets to Johnson Bros for dinner works on figures of corrections Anton Linniberg arrives and eats dinner with Curo at Johnsons. Blinding snow storm in. P.M. I take survey outfit to Anton's then walk home for over night at Hock

Friday Feb 5th 1915

I walk to Anton Linnibergs where I get dinner figure all day on notes and stay over night with Anton. Anton L. gets full day waiting for me

Saturday Feb 6th 1915
Correct up N+S line of Sec 12-140-31 as given on page 143 of this book
Then Begin & Chain E this end of 12-

Sunday Feb 7-15 all day at home in Hock
John W Curo

Monday Feb 8-1915

I am at home in Hockensack all forenoon P.M.

I go on hand car two miles North then walk to Anton Lindegs and he goes with me all P.M. and we check chain and correct the line on E side of sec 12 between Secs 7 and 12 bet Twp. 140-30 and 31 as given on Page 134 of this book.

At 3960 we chain North 12.76 to 3947.24 South then East 0.08 of a foot (1 inch) where we drive an 80¢ spike for the line South $\frac{1}{16}$ Cor bet Secs 7 & 12 - on range line bet 140-30 & 31 with new bearings as follows

Dead W. Oak 6 N $37^{\circ}40'E$ 54.33 ft to point
W. Oak 12 N $52^{\circ}55'W$ 78.80 ft (narrow in flat spot at base of tree angle turned from line line)
A. 60¢ spike set by Bryant bears N $38^{\circ}E$
0.16 of a foot (2 inches distinct) Old stake set by B B Boultlett bears N $63^{\circ}E$
2.25 feet

At 2640 South we chain North 8.51 feet to 2631.49 & then East 0.19 of a foot where we drive an
John H. Curo

151 Feb 8-1915
continued

(28) Hiram Twp
140-31

80^d spike for the line $\frac{1}{4}$ Cor bet 7 & 12
140-31-30 Va spike 60^d set by Bryant bears
N 20° E 3.40 ft. Old stake set by Bailliett
bears N 45° E 1.90 ft.

At 1320 S. use chain North 4.25 ft to 1315.75
South Then E 0.29 of a foot where we drive
an 80^d spike for the line N $\frac{1}{16}$ Cor bet 7 & 12
140-30-31 from which

W. Oak 10 376° 05' W 41.25 ft

Ash 45 38° 35' E 56.00 ft Spike 60^d set by
Bryant bears East 0.65 of a foot. Angle
continued from true line

Over night With Aubin Lumbering

Tuesday Feb 9th 1915 [0.048620] N.
Connecting E & W Center line of Sec 12

140-30 5400 gals N 262.55 (Page 145)

5202 gals N	252.92	OK
3710 " N	180.38	OK
2700 " N	131.27	OK spike
2243.60 " N	109.10	OK
1701.15 " N	82.70	OK
1199.30 " N	58.34	OK spike
740.75 " N	36.03	OK
377.10 " N	18.33	OK spike

Jahm N Curo

Feb. 9-1915
Continued

(29)

Hiram Twp
140-31

152

Andin Linnberg and I put in the center
of sec 12-140-31 where the true NTS line
crosses the line E & W line and at
2709.90 South the center sets West 58.75 ft
at 2732.90 E the Center sets North 132.90 ft

We drive a spike in the ice in center
of Creek where we set the transit
focus telescope on true line south
turn telescope slowly to the left and
focus telescope on true line East

Angle of S & E reads $93^{\circ}39'$

Bearings to Cen are spikes in meadow
34.60 ft West and 30. ft East, 154.75 ft
North and 85. in log ft So fall on true line

Var of NTS Cen line is $7^{\circ}40'$ NOTE:
N & S \rightarrow At 1355. So we run W 90° to random
46.06 ft where we drive an 80 ft spike for true $\frac{1}{16}$
in Cen of N. half of 12-140-31 with bearings
as follows: WP 3 N 34° W 27.70 ft

Poplar 4 S 65° W 22.70 ft

Cherry 3 S 22° E 2.33 " Gully corner
@ 10° W or 100' steel tape

Correcting E & W Cen Line N. half
At 2733 E the Center sets N 132.88 ft
at 1366.50 E we chain N. (90° to random)
66.44 ft set 80 ft spike for $\frac{1}{16}$ in Cen
John W. Curo

153

Feb 9-1915
Continued

(30)

Hiram Tap
14 D-31

of west half BTS Vig
W. Oak 78 64 W 21.50 ft flat spot at base
Basswood 58 29 E 12.15 at 10° over
At 1199.30 ch N 58.34 set spike & line stake
at 377.10 " N 18.33 " " " " "

Quit for night Anton Linnberg and Euro
all day Still with Linnberg
Go to bed sick at Linnbergs

Wednesday Feb 10-1915

In bed all A.M.

P.M.

I am not able to work - eat light
dinner with Anton and walk to Johnson
Bros who like team drive me to
Hock via Victor Martins place
Overnight at home

Thursday Feb 11-1915 Sick at home

Friday Feb 12- " " "

Saturday Feb 13 " Home all day in Hock

Farmers Club meet Go to show
in evening Gorman finishes cornish
Hock

Sunday Feb 14-1915 Gorman & I

check field notes At home in Hock

John H. Euro

Monday Feb 15-1915

Home all forenoon P.M.

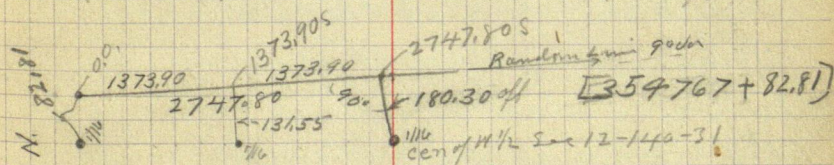
I wash H. Anton & Linnibergs. Anton & I
Conest N & S cen line of NW $\frac{1}{4}$ of Sec 12-140
31. viz. At 2747.80 S. the $\frac{1}{16}$ in cen of W $\frac{1}{2}$
sets W. (90° to random) 180.30 ft. Only sup lot
with Linniberg

Tuesday Feb 16-1915

Bob Johnson-Anton Linniberg and Oreo
Ala. Transit 100' steel tape

at 1373.90 South we chain West 131.55
ft and drive 80# spike and red flag for
line $\frac{1}{16}$ in Cen of NW $\frac{1}{4}$ of Sec 12-140.
31 BTS viz

W.P. 145 37° 30' E 55.10 ft } To flat of put at
Birch 12 N 59° E 47.60 " } base 10° off set
with compass



0.0. goes West 82.81 ✓

280.40 " " 82.81 + 9.95 = 92.76 ✓

558.15 " " 82.81 + 19.79 = 102.60 ✓

1031.40 " " 82.81 + 36.58 = 119.39 ✓

1373.90 - " " 131.55 ✓

1572.30

2065.25

2590.50

2747.80 - - - - - 180.30

180.30

John W. Oreo

155

Feb 16-1915 (32)

Hiram Turp
140-31

CONTINUED

at 1366.50 E the $\frac{1}{16}$ sets N 65.44 ft
at 683.25 E of $\frac{1}{4}$ on N. side of 12-140-31
we chain N 33.22 ft and drive 80°
spike for the $\frac{1}{64}$ corner West of Cen of West
half of sec 12 and 683.25 ft East of $\frac{1}{4}$ on
W side of 12- BTS viz
Birch 98 78° E 39.80 feet
Barwood 65 23° W 50.75 ft

To flat spot at
base 10°
set with
compass

Bag @ $\frac{1}{4}$ lot 11-12-140-31 focus lines
cope than true corner ice and run N. on
true line @ 355 set 80° spike on true
sec line on top of hill where the road
should turn to follow around Ten Mile.
in case the road is built along the lake
shore high enough to be out of reach of
snow drifts. Placed 8" pop line sets about
7.30 ft west of this spike

at 525. drive 80° spike for my M.C. on
sand ridge about 10 ft So of lake

BTS viz WP 3 N 12° 30' E 15.70 ft

WP 2 S 79° 30' E 20.35 ft WP 2 S 32° W 9.25 ft

Ten Mile Lake is NW about 6 feet

at 1393.50 set $\frac{1}{16}$ corner ice

Bag at $\frac{1}{16}$ in cen of NW $\frac{1}{4}$ of 12
run W 10° @ 676.48 set temp $\frac{1}{64}$ cor
at 986 enter ice in Ten Mile Lake.

Over night with limbing

John W Curo

Fine day
plowing all day
not cold - deep snow.

Wednesday Feb 17-1915

Aloe Transit 100' tape Curo & Linnick
Bob Johnson & man

Setting Transit on 2X48" galv iron
pipe set last Fall by mistake too
far East at 1311.84 I chain West
along line line 27.60 ft to 1339.44
and drive 80° spike for the line East
1/16 Cor bet 1 & 12-140-31

Setting Transit on 2X48" galv iron
pipe set wrong last fall too far
East at 2623.68 I chain West
along line line 55.21 ft to 2678.89
W. and drive 80° spike for line 1/4
bet 1 and 12-140-31

Setting Transit on 2X48" galv iron
set last Fall by mistake too far
East at 3935.52 I chain West
on line line 82.81 ft to 4018.33
West and drive 80° spike for
the line West 1/16 Cor bet 1 & 12
140-31. As soon as the ground
thaws I will pull up the 2X48
irons and set them in place of
the spikes to mark line corners.
J. W. Curo

157

Feb 17-1915
CONTO

(34)

Hiram Twp
140-31

Beg @ random line 82.81 ft E of
 W $\frac{1}{16}$ bet 1712 - walk south
 @ 280.40 chain West 92.76 set spike
 @ 558.15 " " 102.60 " Hub
 @ 1031.40 " " 119.40 " spike
 @ 1373.90 Th $\frac{1}{16}$ in Cen of NW $\frac{1}{4}$ of 12
 140-31 sets West 131.55 @ 90° to random
 Set tall stakes marked "line line"

Beg @ line $\frac{1}{16}$ in Cen of NW $\frac{1}{4}$
 of Sec 12 - run West 10° S
 @ 300. stick on line @ 676.48 stick
 on line where I set liant @
 enter Ten Mile Lake @ 1990 (about)
 the $\frac{1}{4}$ Co set yesterday on ice,
 sets South 8.10 feet

Correcting back [0058273]

300 gals S 1.75 spike 676.48 gals
 3.94 where we drive an 80 S spike
 for the $\frac{1}{64}$ corner BTS viz 10° S on
 Birch 10N 45° 30' E 35.48 ft T. flat spot
 " 12N 76° 30' W 35.85 ft T. flat spot
 8.80 gals S 4166 spike on line line
 where I set liant Sight West and
 @ 945.60 drive 80 S spike in south
 edge of 8' green H.P. stump (short stump)
 0.40 of a foot so of heart of stump
 John W Curo

Feb 17-1915
CONTO

(35) Hiram Twp
140-31

158

This stump is on East bank of Ten Mile lake and if the road is ever laid out along this side of the lake the N + S road center should pass 15 or 18 feet East of this stump or about 930. feet West of the center of the NW $\frac{1}{4}$ of Sec 12-140-31

Beg @ an 80° iron spike set for the $\frac{1}{64}$ Cor 683.25 feet East of the $\frac{1}{4}$ on West side of 12-140-31. B. B. Johnson cuts a picket line about a quarter of a mile North splitting the pole for a proposed road and comes out 3.00 ft East of the $\frac{1}{64}$ just set. In Johnson's field about half way bet each $\frac{1}{64}$ Cor I chain West 1.50 ft and set small stake marked "line about here"

As timber here is very heavy and as the road may go along the lake shore I will not cut out this line till the Twp board decides whether the road will go here or along the lake shore where it should go

This ends the survey of these
John W Curo

159

Feb 17-1915

Contd

(36)

Hiram Twp
140-31

roads for the present. I will set
2x48 inch galvanized iron pipes at
all established corners next Spring
if the Town Board will stand for
the expense.

Harry Johnson with "Bots" team
drives me to Hacksenack at 5:30 PM.

Mrs Anton Linnberg goes along
Suffer and over night at home
in Hacksenack.

Thursday Feb 18-1915

All day at home in Hack

Friday Feb 19th 1915

Check drawn to Gorman \$119.00 from
Cor & Cones Alma gabst
Pine River I go to Mildred & back
Home Cones from McKinley

Saturday Feb 20-1915

\$10.10 Case \$25 to Gorman \$5 Alma

John W. Cuss

(1000)

163

Board at Lake View.

Aug. 23, 1914. 8.40 A.M.

F.H. Donner.

(19 3/4 days)

July 22. 1 meal and lodging.

23, 24, 25, 26, 27, 3 meals & lodging.

28, 1 meal.

Aug. 10, 2 meals and lodging.

11, 12, 13 - 14 - 15 - 16 - 17 - 18 - 19
- 20 - 21 - 22 - 23 - 3 meals & lodging.

Aug. 24, 1 meal and lodging.

Give bill to Cass County of \$12.
for Donner board.

Give bill to Hiram Twp of \$3 for
Donner & \$2.00 for Curo.

Curo boards 17 Aug. 20, 3/4 da. 21,
22 - 23 = 3 full days. Aug. 24 - 1/4 day
= 4 full days in full.

Bal. due for Curo & Donner \$7.75