

95

THE BOOK

Aug 15-08

To

July 29-08

contents

Beulah Twp. 139-25 & 26 #173 Page 1. to 31
Ponto L. Twp. 139-29 Page 35 to 52
Bungo 137-31 Page 54 to 64. Twp Road
Pine River & Powers Road 139-30 / P 65 to 84
Judicial Road Corri & Crowding 138-29 P 87-99
Co Supt Highway 140-30 - 100 to 101.
" " " 139-26. Page 102 to 103
Judicial Road 138-29. Page 104-105
Pine River Twp 138-30 - P 106 to 110
Walden Twp 137-30 Page 111 to 118
Sanborn. Childs 138-30 P 119 to 125
140-27. Can Co Road P 126 to 132
137-31 Supt Highway, Bungo & 133 and 137-139
140-30 Hachekira in Village P 134-
Can Co 135 to 139
Bungo 133 to 140
Supt Highway 133-15 140
Powers Twp 139-30. 140 to 155
" " 139-30 Total 156-160

Field notes of surveys
made by John W Curo
Aug 15 - 1908

To
July 29 - 1908

If this book is lost
the finder will receive
a liberal reward by
sending it to

John W Curo
Co Surveyor Con Co
Walker Minn

1309.3
1292.7
16.6
20.6

Addresses July 1908

Washington Civil Service School
Washington D.C.

callan clark 290 Walker St NY
sample 10¢ Booklet per

Nelson's house leaf
Encyclopedia. Salesmen
waited Thomas Nelson & son
301 Evenson Bldg Mpls

Surveyors. CCS Room 524
Boston Bldg Mpls

Quinby Mfg Co of 417-19
work as Mpls might make
babet letters or stamp

Jim Wilson Bookus } was on survey
Frank Thompson " } with collect
+ confid

Old Bill Everett sold John
Honey his Homestead

Phil Palmer helped me survey
for Art Miller at Bookus

John H. Curo

Beaulah Road Petition

"Starting point is the SW corner of the S.E. 1/4 of this SW 1/4 Sec 35-139-26 known as the end of the Singer road & to angle to the NE corner of Sec 35 then to run East on Sec line of 36-139-26 & on east on North line of Sec 31-139-25 to the eighth post three quarters of a mile then to angle round the South side of Morrison lake to the NE corner of the NW 1/4 of the NW 1/4 then to angle to the NE corner of Sec 29-139-25 all in Cass Co

and a road to commence at the center of Sec 35-139-26 and to angle to the Crooked Lake Narrows about the center of the West line of the SW 1/4 of the SW 1/4 of Sec 26-139-26 and to angle up the West side of Crooked Lake to the NE corner of Sec 27-139-26 then north to the NE corner of SE 1/4 Sec 15-139-26

Land Owners:

Mr. McMillen own E 1/2 SW. SW NE. NENE 35-139-26

Franklin Bomer	W 1/2 NW. SE NW	35-139-26
	SW SW	26 " "
	E 1/2 SE	27. " "

NENE 31-139-25

Nora West NW NW 32-139-25

Immigration Land Co SW 1/4, SE NE, NENE 29-139-25

Dated at H. Dudley School House Mar 10-1908

signed by John Brookbank - SH Meacham
 C F Jenkins. D Eads. Wm Scerist. Elmer
 Shaffer. C B Meacham. J L Barrett.
 W. Stratton jr. Wm Robinson

- Build - - Survey and build - - &c.

John W. Cress

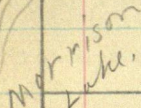
8.

139-26: Surveyor General plat - calls for 23.75
links bet-MC 29 & sec cont White, Jewett
plat says 2875
MC 28 E T. 1/4 is 2430 foot Plat
Bet MC 30 and 31 1002 foot
MC 26 To 27 is 1132 and 2302

63

jk

1312.415



Apr 16-08 Mr Eade arrived at Pine
River at 6³⁰ AM and after taking break-
fast with me we drove to his place in
SW of SW 38-139-25 where I staid over
night.

4

(2)

139-25-26

Recorded

Beulah Twp. Mac P.O. Can Co. Minn

April 17-1908. We began road survey by going to NE cor sec 29. where I found all the Reading ties down and I set the true corner from measurements - taken from the heart of the ties. All measurements checked up perfectly, and all courses correct @ 90° or as assumed including except that the SE B.T. stood a foot too far south.

Setting transit on lock in true corner near North edge of swamp we run West on 7° line.

Sherman T. Eade and Frank Chenvert sworn in as chainmen @ 9 A.M.
Harry Meacham Axman.

@ 275 ft creek 5 ft runs NW. @ 300 ft leave
lawn swamp. @ 740 main road runs NE.
@ 766.6 Tack in stump. @ 1250 cross branch road
@ 1312.41 ft Hot Twp $1/16$ then look in stump
logs etc. Quit for dinner (with Eade)
A.M.

continuing west @ 2362.4.82. Hot Twp $1/4$
True cor stands North 3 ft we set the true
 $1/4$ from One B.T. Standing $N 1^\circ W 19^\circ$ No other
ties. Correcting back we set Hot

1312.41. North 1.5 ft for true $1/16$ cor.

Then setting transit on true $1/16$ & back sight
on true NE cor of 29-13925 we turn 90° angle
and run South. @ 1320 Hot Twp $1/16$
2040 Hot Twp cor of $E 1/2$ of 29.

Quit for night.

J. L. Barrett (Chairman) Harry Meacham
(Trustee) - Frank Chenvert (Road boss)
Sherman T. Eade & I got in whole day.
Elmer Schaefer (Trustee) worked $1/2$ day
in P.M. Barrett went for road order in
A.M. even night with Eade.

139-25-26

Beulah Twp - Mac P.O.

Apr 18-08. Harry Meacham, Jay
L. Barrett, Elmer Shafer, Armen
Sherman T. Eade^{L7} - Frank Chenuert
Chairman Worked all day.

Beginning @ Hub 2640 South of Hub
1312.4 ft. well run S 45° W @ 1320 Hub
@ 1870 ft Hub Temp $\frac{1}{16}$ Cor.
@ 1970 Cen of N. end of narrow slew 50 ft wide
bears N & S 250 ft. @ 2250 Cen of 90 foot
slew bears N & S 200 feet - @ 2400 cross road
@ 2640 Stake marked "2640"
@ 3740 Hub Temp $\frac{1}{16}$ Corner. Mrs Eade and
Ethel Barrett brought over dinner. P.M.

Going to the SW Corner of Sec 29.
139-25 the bedding lines on south side of
slew are gone. Then going to Meander Cor
N 8, on south side of Morrison Lake I
found both B.T. S. The west one down.
Established the true Meander cor @ 7000 and
find the distance via courses to be 3.1 to
long and on distance to B.T. S is Equal I divided
the distance (0.55) and set short post.
Then set transit on true MC and @ 7000
the old short stake sets South at about
the right distance.

I find one J.P. B.T. standing N
from the old short stake and as it would
be impossible to set the stake from a true
"N 1/2° W 214 links" as called for in the
field notes. I decide this is the true supposed
to be "N 1/2° E 233 lbs" so I just reverse
the course and after my stake is set

6

(4)

Balch Twp Mac P.O. 139-25-26

April 18-08 Continued.

this bearing line stands N W 233 lks
 which is the true Government measurement
 but the distance to the true M.P. is 2 feet
 short of the lost chain with Vermer @
 00. and telescope clamped on true M.P. 070
 the only B.T. post just mentioned stands
 N W 233 lks (153.78 ft)

Then Beginning @ true corner of
 Sec 29-30-31-32-139-25 in stub, we
 run East on 8° 00'

@ 630 feet leave meadow @ 1318.35 Hub

In Temporary 1/4 post @ ?? Hub or

@ 2636.70 ft Hub Temp 1/4 corner near fence cor
 on top of great mountain hills.
 No B.T.S. Continued East

@ 3955.05 Hub Temp 1/4 at foot of great
 hill on East side, near edge of big
 bog. Out for Saturday night

MacLean-Barnett-Shäfer-Eads-Chenut
 "Myself got in whole day Over night with
 Eads.

Sunday April 19-1908

Laid up Mr & Mrs Eads - Barnett
 and family went six miles west
 fishing while I kept house. Over
 night with Eads.

(5)

7

139-25.26

Beulah Twp. Mac P.O.

April 20-1908.

Meacham-Barrett-Shifer-Chenvert-Eagle
 worked all day. Beginning @ Hub 3955.05
 E of SW Cor 29-139-25 we continue East
 Eagle and Meacham chaining. Barrett went
 on a horse behind men who knew about
 B.T. on South side of sec 29-139-25
 and returned at noon with "Peg"??
 who after looking made up his mind he
 didn't know anything about it so
 we passed it up.

Going East from 3955.05 @ 5273.40
 Hub 1st mp SE Cor 29-139-25
 True Cor. 18.40 ft North 18.40 ft

We set this SE Cor 29-139-25 from
 asp 12 N 1/4 E 34 lrs = 25.44 ft. asp 13 N 64
 W 39 lrs = 25.74 ft. called for in field
 notes but we did not take the corner
 only chained from heart of creek line
 that the two lines were so rotten we
 could not see iron marks so we
 passed them up the two chains
 out fine.

I find that in looking over my
 notes that I made a mistake in setting
 the 1/4 post on N side of Sec 29
 139-25. On Apr 17-08 (see page 4)
 as I got the nail for the 1/4 post
 on South side mixed with the
 North side. So I take the crew
 and we hike out to remedy the
 mistake. I found both B.T.S.
 called for in the field notes.

8

⑥

139-25

Apr 20-08 Continued

but the figures were all gone on the aspen except one little circle. I measure from heart of the trees
 on @ $5^{\circ}15'$ or meridian

Then setting transit on hole where Hub-26204.82 stood true $\frac{1}{4}$ cor on N side of 29-139-25 stands $N 49^{\circ}12' W 23.20$ feet angles of course taken from our preliminary line by looking East and calling preliminary line true East & West.

Coming back to Hub 1312.41 west of NE cor of sec 29-139-25 I set transit on hole where hub once set and set line $\frac{1}{16}$ post. $N 49^{\circ}12' W 11.6$ feet. Then pulled up both the other hub and the hole. See page 4.

Then I decided to leave the N & S cut out line where it was except that I moving the North end west far enough to catch the new $\frac{1}{16}$ post just set @ Sta 1. So I correct south on N & S Cen line of the NE $\frac{1}{4}$ of sec 29-139-25

@ 660 feet south of Sta 1. I run a line $N 49^{\circ}12' W 8.70$ feet (where I place a tall stake marked "ROAD Cen.")

@ 1320 South I run $N 49^{\circ}12' W 5.80$ ft and mark stake "Road Cen."

This is not setting the stakes to a "fraction of an inch" because in putting in my new $\frac{1}{16}$ @ Sta 1. I make the line 1.50 ft longer but it is within a quarter of an inch of the right place

⑦

139-25

9

Apr 20-08 Continued

Continuing South I leave Hub 2640 on sta 2, where it is. and drive a big $4 \times 4 \times 3$ ft dry Tam plug into the ground to mark the spot with B.T.S. as follows

NP 8 N $58^{\circ}36'W$ 26.30 ft. WP 10 S $86^{\circ}25'$

E 89.42 ft Measurements taken to head of locks drove in a spot at bottom of line. Course taken from true road line looking North

Now all this changes the course of my line through the NE $\frac{1}{4}$ of 29-139-25 and makes the distance between sta 1. & sta 2. 6 feet longer or 2646 feet instead of 2640 ft.

And taking the true North boundary of the NE $\frac{1}{4}$ of Sec 29-139-25 as a true E & West base line, my N & S. line would run $S 0^{\circ}30' E$ or about that. Quit for dinner.

Bonett-Meocham Chaining

P.M. As the South boundary of Sec 29-139-25 is so fearfully hilly near the east end, I decide not to chain it close enough to only get the line East and West line

so going to Hub 2636.70 (Page 6)

I set a little pop stick North 9.20 ft marked "True Sec line"

Coming back to Hub 1318.35 (Page 6) East of SW cor of 29-139-25, I set a hub North 4.60 feet - for true $\frac{1}{16}$ corner or to N & S. but I cannot guarantee it for E & W.

Bonett & Meocham Chaining not sworn in

10

⑧
139-25

Apr 20-08 Continued.

Beginning @ True NE Corner of
see 31-139-25 I run West on 8⁰⁰ N
@ 350 leave meadow @ 1320 stake on
line @ 2300 touch south point of
Big bog laying North
@ 2640 H⁰⁰ Temp $\frac{1}{4}$ Cor N side 31-
139-25. True corner stands 9.35
ft South and 1. foot West

I set the true $\frac{1}{4}$ Cor on N side of
31-139-25 from both B.T.'s which
checked out for course and measure-
ment from heart of trees 9⁰⁰ N

Tho the Birch stump called for
in the field notes had only faint
trace of a figure. The Spruce is up
while there is only the stump of the Birch

There is a dead 5 inch Birch tree
marked "1/4 S" standing S $27^{\circ} 46' W$
12.8 feet - from the true $\frac{1}{4}$ Corner 09°
and as it is marked on the SE face
and has no B.T. I decide to put
it up presuming it to have been marked
by some cruiser.

Setting transit on true $\frac{1}{4}$ post
on N side see 31-139-25 at east
edge of bog I run west through
bog @ 8⁰⁰ Cor. @ 810 leave bog
Barnett & Maccham Charing Vat
sworn in @ 1320 H⁰⁰ Temp $\frac{1}{16}$
@ 2640 H⁰⁰ Temp NW Cor see 31-
139-25. True Corner stands $N 6^{\circ} 50' E$
16.6 feet - We set True see Cor from
1. B.T. standing NE 00 9. Other trees grubbed
for logging road Quit for night
All right with Code

139-25 ~ 26.

Beulah Twp Mac P.O.

Apr 21-1908.

Cade-Meacham-Barnett worked all day. Chenwent worked till 10. AM and then went home sick.

Shaper did not show up.

Going to Hub 1318.35 E of SW Cor 29-139-25 I decided to move it 8. feet west on account of not chaining with a plumb bob thro the Hills on N. side of 29-139-25

In chaining the south boundary of Sec 29-139-25 the whole distance we begin @ the SW Cor and chain East: for the first 1318.35 feet the land is open and level and this distance is chained correct-but

Chaining the other $3/4$ of a mile East it is a fearfully hilly and we only chain it with the pins and no plumb-bob and considering that our chain for the whole mile checks out with the Govt chain makes me think the distance is short.

As I would like to get A.P. No 3. as near the $1/16$ post as possible I decide to set Hub 1318.35, 8. feet west making it 1310.35 feet from SW Cor of Sec 29-139-25 East to my $1/16$ Ch @ A.P. or Sta No 3.

Setting Transit-on Hub 3740. South of A.P. or Sta 2, Sta 3, stands $S 77^{\circ} 30' E$ 42.2 ft Preliminary line assumed as running $S 45^{\circ} W$.

12.

(10)

139-25-26

Apr 21-1908 continued

Going to NE corner Sec 36-
 139-26 we run west on 9° $00'$.
 @ 810 cross wagon road @ 900 touch
 N end of slew. @ 970 feet leave N end of
 slew. @ 1320 feet Hub Temp $1/16$ corner
 @ 2640 Hub Temp $1/4$ post True $1/4$ cor.
 on N. side of Sec 36-139-26 stands
 S $65^{\circ} 2' E$, 59.2 feet

(Post 30) We set the line $1/4$ cor from one N P 6,
 N $25^{\circ} E$ 15. links = 9.9 feet $00'$ $90'$

The other B.T. is gone tho there is a root
 which checks out for measurement tho
 it is a foot too far west.

Barrett & Meacham chained.

Beginning @ True $1/4$ post on
 N side of 36-139-26 we run west
 on 9° $00'$. @ 630 feet touch N end of
 slew. @ 830 feet leave north end of slew
 @ 1320 feet Hub Temp $1/16$ at which point
 the walls of some small old conifers
 stand about 200 feet southwest
 @ 2200 cross main wagon road

@ 2640. Hub Temp Sec Corner.
 True NW cor 36-139-26 stands N 58°
 $8' E$ 107.70 feet we set this corner
 from 3 B.T. stumps standing SW-NW and
 SE but the NE B.T. had been grubbed
 out for a logging road.

The measurement from the heart of
 the 3. saved off stumps was
 perfect so I did not take the
 corner. we drove our stake thro
 point of old goat stake.

Barrett and Meacham chained

139-26

Apr 21-1908. Continued

We walked down and got a drink from Joseph V. Waldorf on Lot 6. See 25-139-26. after which we walked back to NE Cor 35-139-26. started to rain twice but stopped

We run a rough line from the NE Cor See 35-139-26, west to the lake on $8^{\circ}30'$ Nor and I found one M.C. B.T. down.

Quit for the night. Barrett, Meacham - Eade got in a whale day. Chen went worked till 10 A.M. and then quit. 2 hoes did not work.

Mrs Eade and Ethel met us with the driver and took us home. I shaved, Mr + Mrs Barrett and family come over in the evening and played the piano and sang over night with Eade.

139-25-26

Bulah Twp. May P.O.

April 22nd 1908.Cado-Meacham-Barrett
and Shafer worked all day.

We drove to the SW Corner of
Sec 35-139-26 and after Mr. Singer
showed me one down Pine B.T. at MC
N^o 28-139-26, and a stake set by the
Crow Wing Co Surveyors to mark the
end of the new road at the NW
corner of Lot 2-Sec 2-138-26 we drove
back and set MC N^o 29 @ NW cor of
Lot N^o 6 Sec 35-139-26

We set MC 29-Sec 35-139-26 from
one "Elm 6 N 25 E 128 lks" = 84.48 feet
@ 9⁰⁰ on as Meridian Measurements taken
from heart of stump, and we drove in
6 foot cedar post for a good MC. Post
The "Birch 6 S 25 E 152 lks" called
for in the field notes is gone

I then worked the transit on line
and carefully measured under plumb-
bob from the true NE corner of Sec
35-139-26 west: @ 1320 ft Hub Temp-
rary $\frac{1}{16}$ @ 1557.2 inches True MC.
N^o 29-139-26

As the Government Chain calls for
1567.50 ft (2375 lks) I find the distance
is 10.3 feet too short so by proportion-
ate measurement I set Hub 13/20,
8.59 feet East where I place line $\frac{1}{16}$ on
by driving good cedar stake
West from $\frac{1}{16}$ post East to NE

Apr 22-08. Continued

corner sec 35-139-26 is 1311.42 feet being 8.59 feet short

and the distance west to M.C. 29-139-26 is 245.89 feet being 1.61 ft short.

True N. Boundary of Lot 6 - Sec 35-139-26 runs on $8^{\circ} 13'$

Quit for dinner. P.M.

I set transition on Hub 1311.42 W of NE cor 35-139-26, being the true 1/16 corner and A.P.V. 14. Sta 4

Taking N line of Lot 6 as E & W I run South on 26° W. on $8^{\circ} 30'$

@ 1000 Hub @ 2000 Hub @ 2300 cross road @ 2800 cross road

@ 2948 Hub Tupper of sec @ 3000 Hub

Quit for night. Shoper and Meacham claimed. The boys met us with the team.

Meacham - Barrett - Eode, Shoper and I worked all day.

Over night with T. Eode.

A.P.V. 14 and Sta N & Y set @ 1/16 1311.42 feet west of NE cor 35-139-26.

16

(14)

139-25-26

Bulah Twp. Mac. P.O.

April 23rd 1908

Shofer-Eade-Meacham-Barnett
 worked all day. Shofer & Barnett chained
 in A.M. and Eade and Barnett chained
 in P.M. Continuing S 26° W. for $8^{\circ}30'$
 from Hub No 8000. @ 3388 enter slew
 100 feet E of W. end. @ 3478 leave slew
 @ 4000 Hub @ 5000 Hub
 @ 5896 feet Hub Temp $41/6$ @ NE cor. Lot
 3 Sec 2 Twp 138-26.

True $41/6$ stands N $87^{\circ}56'$ W 226 feet

Quit for dinner

We establish the true $41/6$ post between
 the $1/4$ on south side of Sec 35-139-
 26, and MC No 28-139-26 as follows:

Going to MC 28-139-26 we set true
 corner from one Pine 12 S 40° E 36 lks
 = 23.76 feet. for 9° assumed Meridian

The pine is turned out by the roots
 but lays well bedded in sand and
 we set pin in the sand at point
 where top root of tree would
 have been if tree was stood up

The true M.C. post was set
 about 6 feet out in the water
 by getting Singer's boat

The aspen 10 N 78° E 48 links (= 31.68
 feet) called for in the field notes
 is gone.

I drove a good Hub @ top root of Pine
 just to mark place where it stood.

(15)
139-26

430
2580
2580
18 38

17

Apr 23-1908 Continued

Beginning @ True M.C. 28-139-26 we
run E on South boundary of Sec 35-139-
26 for 8°30'

@ 430 links = 283.80 feet set Hub

Temp 1/16" @ 2430 links = 1603.80 ft

Hub Temp 1/4" True 1/4 on South side

Sec 35-139-26, stands N 84° 48' E

53.40 feet We establish true 1/4 post

So side 35-139-26 from

"Pine 12 N 57 E 16 links = 10.56 feet"

WBirch 10.50 W 35 links = 23.10 feet"

called from the Government field notes

The Birch is standing well marked
and the "Pine" is a white pine stump some
on top with the B.T. partly rotted off but
plain. Distance between heart of stump
and heart of tree is just 33.66 feet with
line pulled straight so I set the true
1/4 cor by measurement and do not
take the course to the B.T. S.

Mr. Singer has cleared a field too far
north and over the line and he called
me about 1 rods north of the post I
have just set and showed me a W.P.
stump exactly like the one I have just
used, and this was also for posts
of timber scriber marks evidently
having been made by the original
surveyors but who attempted to cut
the pines off and only left a few
traces. There is no birch to go
with the pine stump so I pass it up.

The Crow Wing Co. Surveyor used the
North stump but was mistaken
in not knowing where the true corner
was.

139-26

Apr 23-1908 Continued

Coming back on South line of 35-
139-26; Hub 283.80 goes $N 84^{\circ} 48' E$
9.45 at which point we set a nice
long 3-foot flatish stone well in the ground
with cross on top to mark
exact point of true $1/16$ post.

The lateral distance from MC 28, E to $1/4$
post on so side 35-139-26 is 1603.80

Govt Chain = 1657.20 ft my Chain

The stone marks the true $1/16$

$$283.80 + 9.45 = 293.25 \text{ H } 1657.20$$

$$1320 + 43.95 = 1363.95 \text{ " }$$

Quit for the night Over night
with Code.

Code - Shofa - Meacham - Bonett
+ I got in for whole day.

June 13, 1931

lks

W. Fine 14 N. 20 E. 41 = 27
M.C. # 15 Aspen 14 N. 40 W. 19 = 12.5

W. $1/4$ Cor. East 7° Var. 1309.6' to hub
104.4, to 1309.6 @

South 7° Var. 997.2 to hub

X $13^{\circ} 32'$ Right to M.C. # 28

to flag set by Dickerson

66 19
264 0
270 6 114
114

(17)

19

139-25-26

Bulah Twp Mac P.O.

April 24-1908

Barnett-Eade-Shaper-Meacham
and I worked all day.

We drove down and staid all
day with Charley Singer, and watched
it rain. Let up raining about
2 P.M. so Barnett and I took the
team and left the crew all at
Singer's, and drove to the west side
of Sec 35-139-26 and looked for
1/4 port but could not find it.
Then we looked for M.C. No 15 Sec
35-139-26 but failed to find it.
Following along the lake shore
Southwest we found one 10 inch
N.P. Bearing tree at M.C. 27. some time
The tree had fell out in the lake with
the figures down. I did not disturb
the tree but left it for future use.

Going to Crooked Lake narrows we
failed to find any Meander Corner so
we quit for the night. Crew all
went home and I staid over
night with Singer.

Emil Baker of Sec 30-140-25
Emily P.O. drove in from Brainerd,
with a load of grub - got stuck in
the mud - Singer and I helped him
out. Over night with Singer.

139-25-26

Bubak Twp. May P.O.

April 25-1908

Cade-Barrett-Safer and
Meacham worked all day. Hired
a postal-haul from Singers

Beginning @ Hub 2948 on
angle line for temporary center of
Sec. 35-139-26 we run a compass
line 2640 feet west and looked for
1/4 corner. Found one 1/4 P 12 S 2 E 26 lbs
= 17.16 feet from which we set the line
1/4 corner @ 9° 00' as meridian and squared
from center of section on line was turned
out by the roots. Tree well marked and
sounded. The aspect 1/4 S 2 W 12" called
for in the field notes is gone

Setting transit on line 1/2 post
on west side of 35-139-26. All
run East on 8° 30' 00"
@ 1320 Hub 2948 1/10 @ 2640 Hub 2948
@ 3960 Stake @ 5280 Hub 2948
1/4 on E side 35-139-26

Quit for the night. Over
night with Cade.

Chained the whole line
carefully, myself under a plumb-
bale. Barrett helped me chain

(19)

21

139-25-26

Bulah Twp. Mar. 10.

April 26-1908 Sunday

Meacham, Barrett, Eade and I worked all day. Shafer did not show up.

We looked for hearing lines @ $\frac{1}{4}$ cor on East side of 35-139-26 but found none.

Going to NE cor 35-139-26 we ran a South on 8° var. I chained the whole distance carefully under a plumb-bob, Barrett helping.

@ 1320 Stake Twp 116

@ 2640 Hvb Temping $\frac{1}{4}$ port on East side 35-139-26 No B.T.S. in N. side of Big mountain near the top

@ about 3000 top of mountain

@ 3900 foot of mountain on S. side

@ 3960 Hvb Temp $\frac{1}{16}$

@ 5280 Hvb Temp NE cor 35-139-26

Out in the night

Eade-Barrett-Meacham and I worked all. Our night with Eade.

We did not get home till 9 P.M. rained some all day. Mr Brookbank took supper with us.

22

(20)

139-25-26

Bulah Twp Mar P.O.

April 27-1908.

Messham-Barrett-Eade & I
worked all day.

We set the true S.E. corner of
Sec 35-139-26 from all four bearing
lines. Tam 7 N 44 W 33 lks = 2.78 feet
Tam 8 N 34 E 6.9 lks = 45.54 feet
Tam 8 S 73 E 4.7 lks = 31.02 feet
Tam 5 S 43 W 2.5 lks = 16.50 feet

Trees all standing and I set the
corner from measurement taken from
the heart of the trees but on the dist-
ance checked out so positively I did
not like the corners. Set a stake
marked "true corner, true".

There is another false corner
standing about 100 feet W.W. of the true
corner and I found 3 large tam-
bles which had been marked up
by the Government surveyors and
then chopped off again. Some traces
of the iron markers still show.

Setting Transit on Hub 5280
South of the N.E. Cor 35-139-26, true
S.E. Cor 35-139-26. Stand N 85° 05' W
118.30 feet. Coming back to Hub
2640 feet South of N.E. Cor 35-139-26
goes N 85° 05' W 69.15 feet where
we place the true 1/4 post between
Sections 35 and 36 - 139-26. with
B.T.S. as follows: Dead Birch 12
S.W. 22.80 feet. Oak 10 about North
26.25 feet. Measurements taken to
head of each drawn in lines. No corner
taken

(21)

23

139-26

April 27 1908 Continued

Setting Transit on Hub 5280 feet
East of West side of Sec 35-139-26,
True $\frac{1}{4}$ port between sections 35-36
139-26, stands $S 72^{\circ} 13' W$ 43.40 feet

Coming back to Hub 2640
East of West side of Sec 35-139-
26. true run $S 72^{\circ} 13' W$ 21.70 feet
where we place the true center of sec
35-139-26, with Bearing lines
as follows

Dead Birch $10 S 21^{\circ} 47' E$ 54.56 feet

Dead Balsam $8 N 10^{\circ} 14' E$ 50.10 feet

On 9° as meridian and meas-
urements taken to head of lack's dove
in flat spot in trees

Setting Transit on Hub 2948
feet SW on angle line from N side of
Lot 6. Sec 35-139-26, true Cen of
Sec 35-139-26 stands $N 79^{\circ} 30' W$
72.20 feet angles learned from
true meridian with preliminary lines
assumed as running $S 26^{\circ} W$

We then walked to Stone $\frac{1}{16}$ Cor
set near Singer's house for true $N 13^{\circ} 26'$
NE Cor lot 23 Sec 2-139-26
and run picket line northwesterly between
lake shore and big hill, to find good
site for road.

Quit for night. Snowed
some all day. Quit night with
Singer. Fish for supper.

24

(22)

139-25-26

Bulah Twp Mac. Co

April 28-1908

Cade - Barnett Mescham
and I worked all dayBeginning @ true center of
sec 35-139-26 we run we
run S $33^{\circ}18'W$ Variation @ 7° or
true meridian, 1684 feet to Sta
@ A.P. where we drove big stake with
B.T.S. as follows:On $91'$ or meridian, Rich 8 N
 $50^{\circ}13'W$ 67.57 feet. Rich 8 S $38^{\circ}53'$
E 46.25 feet To back head drove
in B.T.S.From Sta 1684 S.W. of Cen of Sec 35
139-26, we run S $19^{\circ}49'W$ 1357 feet
to Stone Monument $1/16$ Port at
Singers House, being the N.E. corner,
of the NW $1/4$ of NW $1/4$ Sec 2-138-26. 07° Beg @ Stone $1/16$ near Singers
House we run N $19^{\circ}49'E$ 1357 feet
On 7° or meridian Set Big hub for
A.P. with B.T.S. given above.Then N $33^{\circ}18'E$ 1684 feet to true
Cen of Sec 35-139-26. Angle of circle
of two lines is $166^{\circ}31'$ From Hub 1357. It is 135 feet
NW to lake. Beg @ Cen of 35-139-26
run S $33^{\circ}18'W$ 7° @ 1170 cross road.
@ 1480 enter slen. @ 1570 leave slen.About 1000 feet N of stone $1/16$ at
Singers is culvert pile

(23)

139-26

25

Apr 28-08 continued

Correcting E and W. cen line of Sec 35-139-26. I we set Hub 1320 E of $\frac{1}{4}$ port on west side, S $72^{\circ}13'W$, 10.85 ft where we set the line $\frac{1}{16}$ in center of west half of Sec 35-139-26 and put up white flag made of fire warning sign

Setting transit on line $\frac{1}{4}$ port on W side of Sec 35-139-26 I back sight on line E and W. cen line and run West through Sec 34-139-26:

@ 290 feet enter slow cranberry bog at foot of small hill.

@ 660 feet leave slow

@ 870 " cen of main wagon road top of hill @ 875 set Hub west of wagon road.

Coming back to $\frac{1}{4}$ port on west side of sec 35-139-26, we run N on $8^{\circ}0'$ @ 425 feet Culvert or bridge site @ 515 ft cross wagon road west of bridge. @ 549.50 ft Hub

@ 635 ft enter Tom swamp which extends 350 feet west

@ 1125 feet leave Tom swamp

@ 1320 feet Hub temp $\frac{1}{16}$

@ 1497.60 feet Hub a few feet south of wagon road.

Quit for night over night with food

26

(24)

139-25-26

Bulah Twp Mae P.O.

Apr 29-08

Cado-Barnett-Meacham
worked all day

Going to Meander Co. V^o 12
Twp 139-26 on N. side Crooked
Lake narrow, we set the line
M.C. from One Tom 13866 E 21 lbs
= 1386 feet - for 9° measurement
taken from center line. The line leans
some and is broken off 20 feet up from
ground. all marks well burned off except
the B.T. The "B.T." is plain.

The Cedar 8, West 17 lbs = 11.22 feet
called for in last field notes is
gone tho a cedar stump stands about
S 10° W about 9 feet - no iron marks
but an old ax blade

Setting transit on Hub 1497.6
N of 1/4 port on W. side 35-139-26 we
continued transit line north to
south side of crooked lake could
not find M.C. V^o 14. sighted occa-
sion lake and looked for M.C. V^o 13
on S. side Crooked lake narrow
but it was gone.

Then we took sight transit on
1/4 port on W. side 35-139-26 and
transit the telescope and set
hub on N. side of crooked lake
narrow! True M.C. V^o 12 stands
East-69.25 feet.

Promised to write W.H.
Andrews Monday at Mained C.P.C. and
itor about surveying townsite
Overnight with Jack Wilson. and
Geo Cline.

(25)

27

139-25-26

Bulah Twp Mar P.O.

Apr 29-08 Continued

Drove cedar post on East bank of Crooked Lake Narrows 25 feet south of extreme point of sand and 5 feet East of water's edge. Stake marked "East end of bridge site" at which point I set transit, and pointed telescope across channel. Site for bridge bears $S53^{\circ}37'W$ or 8° in line with a little black snag on opposite bank:

Distance across water is about 150 feet and bridge from end to end will be about 160 feet

Running East from East end of bridge site $4^{\circ}8'$.
@ 100 feet I cross see line
100 feet south of MC N^o 12

Jack Wilson and Geo Cline look us over in a boat and we placed a tall stake @ MC N^o 32 on west side Crooked Lake Narrows.

I promised to write Mr W. H. Andrews (Emily P.O.) Commissioner Crow Wing Co, at Brainerd about survey I providing Lew Harrison could not do it.

Promised to send Charles Singer map of his section.

28

(96)

139-25-26.

Bulah Twp Mac P.O.

Apr 30-08.

From the $\frac{1}{4}$ post on west side Sec 35-139-26, North to M.C. N^o 12. on North side of Crooked Lake narrows the boat plat shows 5200 links = 3432. ft and as I have no easy way of getting the true distance across the lake I am going to call the boat chain to be correct.

@ Hub 3432. feet N of $\frac{1}{4}$ post W. side 35-139-26, True M.C. N^o 12 stands East 69.25 feet.

Hub 1497.6 goes East 30.16 feet at which point I drove a hub on line sec line and placing transit on Hub 30.16 feet set I direct telescope on True M.C. N^o 12. N of Crooked Lake narrows: Then Run N. on sec line 2.40 feet where we drove big Cedar post 1500. feet N. of $\frac{1}{4}$ post on W side of sec 35-139-26 being Sta V^o on APNE. Then set transit on Cedar post just set and again turned telescope on M.C. N^o 12 N of Narrows with vernier clamped @ 0.0.

Then Run N. $23^{\circ}48'E$ 275 feet to AP N^o on Sta V^o. Then N $16^{\circ}30'E$ @ about 900. feet cross sec line on N. boundary of sec 35-139-26, about 100 ft E of Crooked Lake of M.C. N^o 12 on side of Lake @ 1042. feet drove Hub for APNE on Sta V^o.

(27)

29

139-26

Apr 30-08 Continued

Thence N $23^{\circ}47'$ W 264.5 feet
 to AP No on N $\frac{1}{2}$ N $\frac{1}{2}$

Thence N $40^{\circ}42'$ W 456. feet
 to a point on sec line on west boundary
 of Lot No 7. See 24-139-26.
 81. feet south of MC N $\frac{1}{2}$ 12
 Thence west 225. feet to East end
 of Bridge site.

Going to Hub 549.5 N of 1/4 post on W
 side of sec 35-139-26, west of East
 11.09 feet from line road center and
 sec line

At Hub 2948. South of N Boundary of
 Lot No 6 see 35-139-26, True Center
 of sec 35 stands.

Looked for MC N $\frac{1}{2}$ 14. on S.E. side
 of Crooked Lake and MC 13. on south
 side Crooked Lake narrows also
 MC N $\frac{1}{2}$ 30 and 31. but found nothing.

Placing transit on ridge
 of land between Crooked Lake and
 Lawrence I can see MC N $\frac{1}{2}$ 29 and
 32. and where line would cross
 our road line. Quit for night

Meacham-Barrett Coads & I got
 in a whole day. Over night with
 Coads.

30.

(28)

N. $27^{\circ}20\frac{1}{2}'E$ 2968.1

2948

20.1

139-25-26

Bulah Twp Mac P.O.

May 1-08

Meacham and I correcting
up whole line. Good helping

A Hub 2948 SW on angle
line through sec 35-139-26, true
center of sec stands N $79^{\circ}30'W$
72.20 feet angle turned from true mer-
idian with angle line considered on
running S $26^{\circ}W$.

@ Hub 2000. we placed rod on N $79^{\circ}30'W$ 48.98

@ Hub 1000 gaug N $79^{\circ}30'W$ 24.49 feet

Correcting North Boundary Sec 36-
139-26. @ 2640 feet & West $7\frac{1}{4}$
Port on N. side of Sec 36-139-26,
true sec corner stands N $58^{\circ}08'E$
107.70 feet.

Hub 1320 & West $7\frac{1}{4}$ port on N side 36-

139-26 gaug N $58^{\circ}08'E$ 53.85 feet
when we set true $7\frac{1}{4}$ port for rod on

@ Hub 2640 feet West of NE Cor
Sec 36-139-26, true $7\frac{1}{4}$ port stands
S $65^{\circ}02'E$ 59.20 feet

Hub N 1320. W of NE Cor sec 36, we
set S $65^{\circ}02'E$ 29.60 feet where we
placed $7\frac{1}{4}$ plate for rod center.

(29)

31

139-25-26

May 1-08 Continued

$$\begin{array}{r} 5.260W \\ 7948 \end{array}$$
Correcting N. by 30° Sec 31-139-25

@ 2640 W of $\frac{1}{4}$ post on N. side 31 line
see cor stands N $6^\circ 50' E$ 16.60 ft

@ 1320 feet west of $\frac{1}{4}$ post on N side 31-
139-25 line $\frac{1}{16}$ post stands
N $6^\circ 50' E$ 8.30 ft

@ 2640 feet west of NE cor 31-139-25
line $\frac{1}{4}$ post stands 9.35 feet south
and one (1) foot west

Hub 1320 west of NE cor 31-139-25
goes 4.67 feet south and 0.50 ft
west at which we place $\frac{1}{16}$ post
marked "road centre"

Correcting the angle line
through South half of Sec 29-
139-25.

@ Hub 3740 S of AP. 2, Tm $\frac{1}{16}$ of AP 3.
stands S $77^\circ 30' E$ 42.20 ft

@ hub 2640. S $77^\circ 30' E$ 2986

1870 S $77^\circ 30' E$ 21.10 feet

1320 S $77^\circ 30' E$ 14.88

Meacham-Cade and I got
in a whole day.

The storm board met at
Bennetts and I put in two bills -
one for 24⁰⁰ being from Apr 15
to Apr
and one for 44⁰⁰ Apr to May 2nd
inclusive

The board dated their meeting
May 2nd as that was their regular
meeting day

John W. Cress

32 June 1931

Resurvey for L.P. Peterson

2640
997.2

16428

124069

395.4 = Offset?

293.1 = Coros Dis

102.3

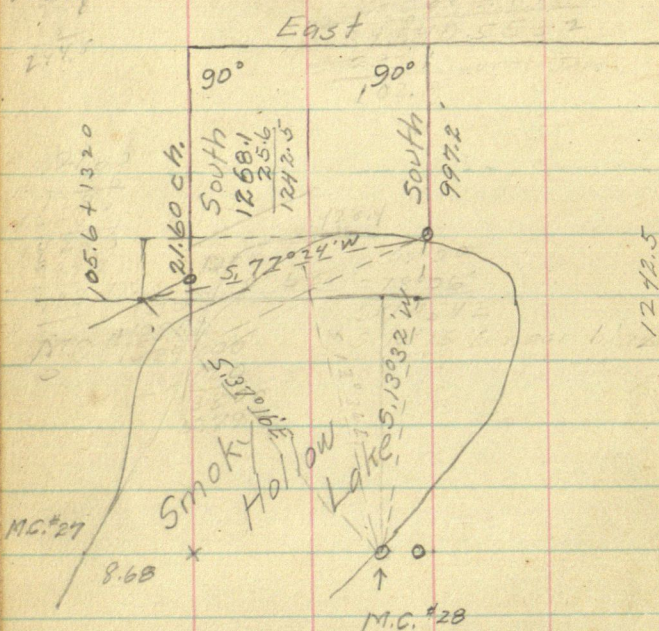
1425.6

997.2

448.4 by 1310:

S. 71° 54' E.

S. 70° 15' E = near old blaze.



1.31427
4.15463
5.46892

1375000

$$\begin{array}{r} 1320 \\ 1242.5 \\ \hline 77.5 \end{array}$$

$$\begin{array}{r} 293.1 \\ 9.3 \\ \hline 283.8 \end{array}$$

N.

$$\begin{array}{c} \swarrow \\ 84^{\circ}48' \quad 9.45' \end{array}$$

$$\begin{array}{r} 31.9 \\ 68.1 \end{array}$$

$$\begin{array}{r} 99588 \\ 943 \\ \hline 497940 \\ 398352 \\ \hline 896302 \\ 93111650 \end{array}$$

$$\begin{array}{r} 134.23 \\ 77.5 \\ \hline 155.0 \end{array}$$

$$\begin{array}{r} 1.73205 \\ 77.5 \\ \hline 866025 \\ 1212435 \\ \hline 1212435 \\ 134233575 \end{array}$$

$$\begin{array}{r} 1309.6 \\ 134.2 \\ \hline 1443.8 \end{array}$$

$$\begin{array}{r} 1320 \\ 997.2 \\ \hline 322.8 \end{array}$$

$$322.8$$

$$\begin{array}{r} 4472 \\ 1443.8 \\ \hline 12912 \end{array}$$

$$\begin{array}{r} 24069.3 \\ 322.8 \\ \hline 19255.2 \\ 48138 \\ 48138 \\ \hline 72307 \\ 72307 \\ \hline 7769473 \end{array}$$

$$\begin{array}{r} 1443.8 \\ 77.7 \\ \hline 1366.1 = \text{Base} \\ 1312 \\ \hline 51 \end{array}$$

$$\begin{array}{r} 15260 \\ 12912 \\ \hline 23480 \\ 22596 \\ \hline 8840 \end{array}$$

$$\begin{array}{r} 1046 \\ 1046 \\ \hline 131427 \quad 10 \quad 131427 \quad 13750 \\ 131427 \\ \hline 140000 \\ 131427 \\ \hline 857200 \end{array}$$

$$\begin{array}{r} 607200 \\ 525708 \\ \hline 814920 \\ 788562 \end{array}$$

$$\begin{array}{r} 331 \\ 4.15465 \quad 1375000 \\ 1246395 \\ \hline 1286060 \\ 1246395 \\ \hline 396550 \end{array}$$

$$\begin{array}{r} 1046 \\ 331 \\ \hline 1377 \end{array}$$

May 3rd 1908 Sunday

Levi and I took the kids and drove to Jenkins. Paid Tom Nash \$2.⁰⁰

for team. Paid Fred R. Eidam \$3.87 total account

Paid E. S. Halman \$20.⁰⁰ on rent

Paid Levi Hoover \$2.⁰⁰ total account on

livery and .80⁰⁰ Woodman insurance

No 2240 order { Sent \$2.50 to bal account for Farm No. 2240 stock and Home to Frank A. Hutson. 2240

Sent Elmer Shaper of Mae P.O. Co. &

Min \$16.65 in payment of two checks

on Bulon Twp for \$14.⁰⁰ and \$4.50 @

10% discount

Paid A. H. Pike \$11.25 total account

he had left for collection with

Forbs. I gave Forbs \$1.25 and

he put in the \$10.00 W. A. Spurrer owed me for a plat of Norwood so that made the \$11.25 to square up Pike to date and Spurrer and Forbs owe me nothing.

36

(2)

139-29

May 4-1908. Ponto Lake Trip

I waited all A.M. for Mike Smith to call with his team to take me out to make survey of a wagon road for Ponto Lake Trip.

Herman Siltman called for me at about 4 p.m. and we drove out to Mike Smith's where I staid all night.

Got in one day for Ponto Lake Trip

May 5-08

Mike Smith - Herman Siltman

Gas Tripp - Curby Siltman
worked all day on survey.

We began @ $\frac{1}{4}$ post on North side of Section 16-139-29

The "BKP 4 S13W34 - NP 18 N 70 W 72" called for in the Goat field notes are in good condition and check out fine for course and measurement. $\text{Var } 9^\circ$ and from heart of tree.

M.C. N^o 58. But sec 18 x 16 W side Ponto Lake we set from one "BP 9 N 51 W 18" = 11.88 ft called for in Goat field notes. Took measurement from heart of tree $\angle 9^\circ$

The "BP 10 W 2 W 18" called for in Goat notes is laying on ground but we could not find where it stood.

Beg @ $\frac{1}{4}$ post on N. side Sec 16-139-29 we chained East to M.C. 58. Distance is 990 feet Goat chain = 992.2 feet my chain

(3)

37

139-29.

May 5-1908 Continued

Selling Transit on MC 58 - we run
 S on $8^{\circ}40'$ Nor @ feet Hab. Then
 E (90° angle) 297. feet and set Hab E of
 road.

Then going to Cor Secs 15-16-21-22-
 139-29 we found true sec cor set
 by N.W. Hicks two years ago

Hicks it seems had some trouble
 in setting this corner. so as to make
 all four bearing lines come in the
 section they represented.

As I know Hicks corner to be correct
 I chain west along old cut-out
 transit line. @ 1002.2 Hab.
 set by Hicks. correction hab sets
 North 9.70 feet

@ 1120 enter slew. 1320 Hab Temp $1/16$

@ 1420 leave slew

@ 2644.5 true $1/4$ cor bet Secs 16
 and 21. Nts North 26.30 feet

Correcting back, 1320 goes West
 2.25 feet and North 12.80 feet

where we place it for true $1/16$ in slew
 The reason we set Hab 1320, North only
 1280 was because in going west on
 Hicks cutout line we found a
 good Hab @ 1002.2 and a good
 correction line stake which we
 knew to be correct

when we got 2644.5 feet west
 we found line $1/4$ 26.30 feet but
 as we did not use the transit on
 Hicks old line we figure the
 true correction from the Hab vs
 1002.2 and the correction 9.70 north

Over

37

(4)

139-29.

May 5-08 Continued

at the $\frac{1}{4}$ post N. side 21-139-29 we found correct post set by Hicks from both bearing trees which are still standing tho the figures on the B.E. one are burned off. They are
 "NP 84 $\frac{1}{2}$ E 57. NP 124 N 5 W 117."

Got notes. I did not take time to only take two rough measurements with chain and took Hicks stake.

Reg @ $\frac{1}{16}$ post 1322.25 West of S SEC cor Sec 16-139-29 we run N on gov. thru cor of E $\frac{1}{2}$ of Sec 16-139-29

@ 80 feet leave stave. @ ? cross road

@ 722 Hub @ 1320 Hub temp $\frac{1}{16}$

@ 2033.3 Hub. @ 2640 Hub " $\frac{1}{16}$

@ 3000 enter low wet land

@ 3296.5 Hub. @ 3445 feet leave wet land

@ 3960 Hub. Quit for night

Siltman & Son and Smith & Trup - myself of course got in a whole day.
 Over night with Smith

(5)

139-29.

39

Ponto Lake Twp.

May 6-1908

Beginning @ Hub 3960 N. through
E. 1/2 Sec 16-139-29 we continue transit line
North.

@ 4622.50 Hub.

Turned 90° angle and run E.

@ 587.2 East set Hub near lake bank

Thence 90° to 80 ft set Hub

" E 445 feet set Hub N° 1032.2 E

" S 15 ft set Hub N° 95 S.

" E 340 ft set Hub N 1372.2 E

" N 80.4 ft to point 8.60 ft E of MC.

" W 8.60 ft to MC N° 53 S. E of Ponto Lake

Making total distance 1363.60 ft
East and 14.60 feet south from
Hub 4622.50 to MC 53.

At Hub 4607.90 feet N of 1/16 port
West of S.E. Cor of Sec 16-139-29,
MC N° 53, set E 1363.60 feet

Reg @ Hub 4622.5 we continued
transit line North.

@ 4882. Hub

@ 4882. N we turn 90° angle and
run west @ 221.8 set Hub
Then N. on 90° angle c

@ 5267.2, MC N° 58 set E 0.2 ft

At Hub 4607.9 N of 1/16 Cor W of S.E. Cor
Sec 16-139-29. MC N° 58, set 221.6 ft W
and 659.3 North making total dist
5267.2 then Sec

Over

40

⑥

139-29

May 6-08 Continued.

At Hub 4607.9 N. of $\frac{1}{16}$
port west of SEC on sec 16-139-29.

The distance East via of 90°
angles, to M.C. N^o 53, is 1363.6 feet

and the distance from the same
hub west, to the $\frac{1}{4}$ port on North
side of 16-139-29, By way of 90°
angles is 1213.8 feet & making
the total distance 2577.4 feet
or 62.6 feet short of boat chain

By setting Hub 4607.9, East
74.9 feet, would bring it at equal
distances from M.C. 53 and $\frac{1}{4}$ on N
side of 16. 1288.7 and 1288.7 =
2577.4 feet

Correcting N & S Cur line thru
E half of sec 16-139-29. Hub
4607.9 goes East 74.9 feet
Hub 4622.5 goes East 75.14 ft + True $\frac{1}{16}$ line

"	3960	"	"	64.38	"	"
"	3296.5	"	"	53.59	"	"
"	2640	"	"	42.91	"	"
"	2033.3	"	"	33.05	"	"
"	1320	"	"	21.46	"	"
"	722	"	"	11.74	"	"

Reg @ M.C. N^o 53. on S end Point
like run South between sec 15 and 16
139-29 on 8° V or
 @ 660 ft Hub Temp $\frac{1}{16}$
 @ 700 enter slow
 @ 1111. leave slow
 @ 777 Hub on JP point

(7)

41

139-29

May 6-08 Continued

Continuing S. from MC. No 53. on
sec line between Secs 15 and 16 -
139-29.

@ 1320 enter steel

@ 1980 Hub Temp $\frac{1}{4}$ port

True $\frac{1}{4}$ port between Secs 15 and 16

139-29. stands:

N $15^{\circ}17'E$ 62.70 feet

We set the True $\frac{1}{4}$ port bet
15 and 16 from one "NP 20 D 3W 300 lbs"
called for in Govt field notes
rather lines called for.

Measurements taken from heart of line
on 9th as meridian

A corner set by the former Co
surveyor (Probably former A. Canfield)
sets west of my true cor and it
seems he called the line S 3E on 8³⁰.

a small stake which may have
been set by the original Govt surveyor
sets about 5 ft E. and 2 ft N of mine
but as it is only a stick 1. inch thru and
not marked I ignore it entirely

Coming back to Hub 660 I set
line $\frac{1}{16}$ N $15^{\circ}17'E$ 20.9 feet for line
 $\frac{1}{16}$. I drove a lock in side of green
JP stump. Course and distance to lock
is S $16^{\circ}53'W$ 17. feet. U 9th

I set up transit on $\frac{1}{4}$ port on N
side Sec 15-139-29. Set by Canfield and
struck a rough line S. on 8⁰⁰ for Trip.
Canfield's cor may be wrong.

42.

⑧

139-29

May 6-08 Continued

We looked for M.C. N^o 54-139-29 on E side of Porto Lake near South end. No B.T.P.

Confield set a post for the $\frac{1}{16}$ East of M.C. N^o 54, but I

think he got it too far East as the boat plat says it is only 2166 links from M.C. N^o 54, East to $\frac{1}{4}$ post on N side of 15-139-29 where the Bearing Trees were never found.

This would make the distance 166 links from M.C. 54, E to $\frac{1}{16}$ Post boat Chain

Bearing trees called for in boat field notes for M.C. N^o 54 are
 QP 9 N 80 E 40" } no find run.
 NP 20 S 10 E 34

Bearing trees called for @ $\frac{1}{4}$ Co bet Bear 10 and 15-139-29 are
 NP 18 S 41 W 77. } gone.
 NP 24 N 30 E 134

3 Took dinner with Trip and staid over night with Trip

Trip & Smith - Siltman and son got in a whale day for Porto Trip

I got in $\frac{3}{4}$ day as I offered to put in the $\frac{1}{16}$ South of M.C. 53, on my own time rather than see it stay where Confield put it which was about 60 feet too far N and 20 ft E.

Confield set M.C. 53 about 40 feet too far East.

⑨

43

139-29

May 7-08 Ponto Lake Trip

Kerbie G. Siltman - Herman Siltman - Mike Smith - Jim Trip and I began another day for Ponto Lake Trip. Smith quit about 9 a.m. and went home on account of feeling being sick with presumed small pox.

We corrected the N and S. $\frac{1}{16}$ line through cen of E $\frac{1}{2}$ Sec 16-139-29, as per schedule given on Page 40 leaf "6".

Setting Liawit on A.P. N^o on Sta N^o being a post driven on the $\frac{1}{16}$ line at a point 135 feet North of the $\frac{1}{16}$ post west of the S.E. Cor of 16-139-29.

We run S 73° W, 125 feet to A.P. N^o on Sta N^o being a point on the Sec line 183. feet west of the $\frac{1}{16}$ post above mentioned.

Thence West 08° along the Sec line 1322.2 feet to the $\frac{1}{4}$ Post on N side Sec 21-139-29.

Setting Liawit on true $\frac{1}{4}$ post on N side Sec 21-139-29 we run South on 8° on

@ 1320 Hub @ 1775 ft ends ploughing
@ 2640 ft Hub Temp Cen of Sec 21.
Took dinner with Mike Smith

over

44

(10)

139-29 Pontō

May 7-08 Continued. P.M.

Beginning @ True $\frac{1}{4}$ post on E
side of road 21-139-29 we ran W
8° or @ ?? cross south end of marsh
C @ ?? ? Hub @ 1320 stake in corner of
south end of Slew @ ?? Hub
@ 2617 Hub Temp E & W can see 21-
139-29 @ 2640 Hub.

Then went to Pontō lake and
monitored around MC No. 58 for
place to find road line

Quit for the night over night
with Trip Trip Pittman & son
& myself got in a whole day
Mike Smith got in $\frac{1}{4}$ day.

⑪

45

139-29

Pond Lake Twp

May 8-08.

Herman Sittman & Son
Jim Timp & I worked

Beginning Cen of road survey
at a point on the North boundary
of Govt Lot N^o 2. Sec 16-139-29
108 feet West of Meander N^o 58.
and 884.2 feet East of the $\frac{1}{4}$ post
on N. side of 16-139-29 we run
S $24^{\circ}07'E$ 579 feet
Then S $73^{\circ}41'E$ 187 feet to a point
on the $\frac{1}{16}$ line, 4680.7 feet N of the
 $\frac{1}{16}$ west of the SE cor of 16-139-29

Thence South 08° following the $\frac{1}{16}$
line, 4545.7 feet to a point 135 feet
N of the $\frac{1}{16}$ post

Thence S $73^{\circ}W$ 125 ft

" S $32^{\circ}35'W$ 115 feet to a point on
the section line 183 feet west of the
 $\frac{1}{16}$ post

Thence West along Sec line 08°
1139.2 feet to the $\frac{1}{4}$ post between
Sec 16 and 21-139-29.

Thence South 08° following the N and S
Cen line of Sec 21-139-29

46

(12)

139-29

Ponto

May 8-08 Continued

Begin @ Hub 2617 west of $\frac{1}{4}$
port on E side of sec 21-139-29
we continue transit line west
@ 3960 Hub

@ 4070 Hub offset 90 feet South. Thence
west along south end of slw. Th W 264 ft
Thence N 90 feet to a hub on W. side of slw
being Hub 4334

Thence 900 feet to Hub 5234

True $\frac{1}{4}$ port on W. side of 21-139-29
sets N $0^{\circ} 42' E$ 50.70 feet

Coming back to hub 2617
we run N. $0^{\circ} 42' E$ 25.35 feet
where we set the true center of
sec 21-139-26 in Mike Smith's
ploughing

Setting transit on Hub 2640
So, being the temporary cen on N & S
line, true center bears
S $57^{\circ} E$ 31.20 feet

Set transit on true center
and back sight on line N & S cen
line we continue South
on line N & S cen line, 479 ft and
Set Hub for road center and
A.P. on slw N

Thence S $49^{\circ} 20' W$ keeping 33 feet from
Mike Smith's wire fence

@ 3303.3 cross sec line 128.2

East of SW cor sec 21-139-29

@ 3475.5 intersect sec line 113.7
feet south of the NE cor sec 29-

139-29. Thence South following

sec line between sections
28 and 29-139-29,

(13)
189-29

Ponto 47

May 8-08 Continued

997 feet to Meander Post No. 4.
looked up site for road further SW and
quit for the day

I and Trip took dinner with Mike
Smith.

I caught a ride into Pine
River with Frank Hill and

Son. ^{Son}
Took supper at home and staid
over night

Silman & Son - Trip and I got
in a whole day for Ponto Lake traps

48

(14)

139-29

Ponto Lake Trip

May 9-09

I got breakfast at home @
4:30 AM and skinned it - out to
Mike Smiths arrived just in
time to meet the sawing crew
Siltman & Son - Trip and I

Began at a point on the section
line between sections 28 and 29-139-29
41.50 feet N of MC N^o 4 we run

South $27^{\circ} 37' W$ $0^{\circ} 8'$

@ 1320 Hob set stake marked "wood Cen"

@ 1950. ft Cen of 20 foot slew Bore NW-SE

@ 2640 Hob at which point one slew
lays about 100 ft West and another
slew lays about 150 ft East

@ 3582.3 Hob being Sta N^o

on APN^o

Thence $S 7^{\circ} E$ on 8 and angle turned from
back sight on cut-out line

Quit for the night - Trip
Siltman - Siltman and I got in a
whole day

Supper with Mike Smith and then
went to Pine River

Smith drove me one mile
south of Roovers place and I
walked home to Pine River arrived
@ 11 o'clock P.M.

May 10-08 Sunday

Staid at home all day except two hours in P.M. when John Lee and I chained roughly, the length of a piece of Walden Twp road is follow-

Begin @ RR Crossing, Then west 833 feet to SW cor Twp 138-29, Then N on Rgl line 838.4 ft to a point 33 ft E of the Rofway

Then N parallel to Rofway

@ 1320 pin. 2440 pin.

@ 2440 + 9 chs x 15 ft = 3465 ft

To N & S cen line of 36

Then N along cen line of 36-138-30

847 feet intersecting old Govt Wagon road

3465 feet = 210 rods

847 feet = 5 1/3 rods

I did not survey the N and S cen line of 36-138-30, but simply took an old line of stakes which was set by some other surveyor and I told Lee plainly that I would not guarantee the line, but simply "helped him chain it in" the rough so as to give him an idea as to the number of rods

I made out my bill for the day work for 4.00 against Walden Twp

Garoti - Mather - Wesley - Lee - Meacham - Skibeli - Hoffman -

over night at home.

139-29.

Ponto Lake Trip

May 11-08

Got breakfast at home and walked out to road survey path of Roscoe's.

I - Trip - Siltman and Son got in a whole day for Ponto Lake Trip. We cut and continued out line south $7^{\circ}E$ @ $8^{\circ}Var$ and found it run too far west of Roscoe lake so we intend to change it a little.

We set the Co of Secs 28-29-32-33-139-29, just in the rough with the chain and run a compass line West on $8^{\circ}Var$ so as to tell where our road line will cross the north boundary of Sec 32.

At Co of 28-29-32-33-139-29 the Gout maps call for:-
 NP15 S $9^{\circ}E$ 142 lks - NP15 N $53^{\circ}W$.
 92 lks - BKP6 S $16\frac{1}{2}^{\circ}W$ 144.
 BKP6 N $65^{\circ}E$ 155 lks.

All were there except the N.W. BT.

The chainage did not check out exactly as there is about 4 feet too much distance between the bearing line.

Began raining hard @ 2 P.M. and we quit for the day. Took lunch with Trips and over night with Trips.
 Rained all P.M.

(17)

51

139-29

Ponto Lake Twp

May 12-08

Beginning @ AP N^eor Sta N^e @ Hub 3582.3

we run S 7° E 0 or 8° @ 997 Hub

@ 1055 feet cross N line of
see 32-139-29, 1522 feet
west of the N E corner.

@ 1307 Hub 1320 pin

1410 enter slew 1650 leave slew

@ 1733 Hub @ 2040 enter wet land

2200 enter slew. 2300 leave slew

@ 2555 Hub 2640 pin

@ 3836 Hub N of slew

Offset 60.10 feet East to get around slew

Then S 320 ft. Then West 60.10 ft

and set Hub 4156. S of slew.

@ 4800 Hub

@ 4800 we run Eastly @ 90° angle from
our cut-out line and @ 90 feet set
Oak stake for road center

Lake shore lays about 50 feet East of
road center

@ 4800 road center lays E 90 ft - at
which point we place A.P. or Sta N^e

correcting back

Between Hub N^e 3582.3 and

4800

@ 4800 road center is 90 ft East of

4156 goes E 77.92. 3836 goes E 71.92

2555 " " 47.91. 1733 " " 32.49 ft

1307 " " 24.51. 997 " " 18.69

This makes line to run S 8° E 8' 0 or
bet Sta x Sta

139-29

May 12-08 Continued

Beginning @ Sta N^obeing Hub 4800. We continued the road
S and E around shore of Roscoe lake
keeping 33 ft from waterRun. S 28° 15' E 165 ft APN^o

Thence S 38° 20' E 212 feet - Sta

" S 51° 40' E 200 ft "

" S 60° 30' E 100 " "

" S 46° 45' E 100 ft "

at which point we enter Swamp 20 ft

west of sea wall on Roscoe Lake

Thence S 20° 40' E 180 ft Hub in slew

" S 56° 56' E 100 feet Hub in slew

" S 79° 56' E 256 feet

at which we intersect the Sec line
between sections 32 & 33,33 feet South MCN^o 10 on S side Roscoe
lake between sec 32-33Thence S 1° 13' W 77.3 ft to corner
to sec 4 and 4 on trap lineQuit for night, and Mike Smith
took me home to Pine River.Trip - Siltman & son & I got in
whole day for Ponté Lake TrapTook lunch with Trip for din-
ner. Supper with Smith

John W. Curo

①

59

137-31

Bungo Turp

May 12-08 I got in from Ponto
at 8 P.M. with Mike Smith and my
survey outfit and found Jake
Hoffman waiting for me. As Ponto
had to have a petition calling for the
road where I have just surveyed
it - I was compelled to write it - act
before I left for Bungo with Hoffman.
We got away from Pine Run at
12. midnight I arrived at Bungo at
3.15 A.M. May 13-08.

I got in 1/2 day for Bungo Turp.
for riding out in the night.
Took Va cat map with Jake.

May 13-08.

Wm N. Hanley - J W Hoffman -
Frank Hoffman and I

Began @ Sharp stone set at true
corner to Secs 22-23-27-28-137-31

Focused transit on flag set
a mile north at a sharp stone which is
the true corner set at NE Cor Sec 22.
Run N about 9° or @ 1320 ft. Hub Temp 1/10
@ 2640 feet Hub. Cor of E & W graded wagon
road Temp 1/4 between Secs 22 & 23 137-31

Quit for dinner

P.M. We drove with Hanley's team to
1/2 post between Secs 27 and 34

137-31 found no Bearing Trees

Came back to square stake formerly
set by me for true corner to Secs
26-27-34-35 and run west

137-31

May 13-08 Continued

Bungo

Beg @ SE Cor. Sec 27-137-31 Run W using graded road for course.

@ 275 feet leave swamp @ 630 ft follow graded road @ 1320 ft

@ 1819 feet - Cen of plank culvert in Bungo slew 125 feet wide. Run N. 95° E

@ 2640 feet Hub Temp 1/4 No B.T.S. leave road

@ 2660 cen little one to 1 creek runs SW

3000 enter lake swamp

3274 Hub. at which point Bungo Brook lays

30 feet North

@ 3360 ft Brook lays North 30 feet

3385 Cen of Bungo Brook 10 feet wide

3400 Brook lays South 30 ft

3475 " " " 30 "

3525 " " " 50 "

3545 Cen Brook - follow up Brook

3580 leave "

3600 Brook lays N 30 ft

3630 " " " 30 "

3650 " " " 6 "

3675 centre of Brook

3690 Brook 20 ft S

3700 Cen of Brook

3750 Brook lays 50 ft N

3762 Hub Brook lays N 50 ft

3815 enter and follow up Brook

3960 Hub in Brook Cen Temp 1/16 feet

3965 leave "

4000 Brook 50 ft South

4050 " 30 "

4056 Tack in log

4100 touch N edge of Brook

4140 leave N edge of Brook

4170 Brook lays S 20 feet

③

137-31

May 13-08 Continued Bungo

- 4210 Cen / Brook in bend
 4230 Brook 15 ft S
 4270 " 30 " "
 4320 " 20 " "
 4383 Cen of Brook
 4425 Brook lays 20 ft V
 4450 " " 60 " N
 4500 " " 40 " N
 4592 Cen of Brook
 4630 Brook lays 60 ft S
 4749 Took in Birch log - Brook 100 ft S
 4940 Leave for S.W. Brook 180 ft S
 5280 Hub. Owl for the night

Huffman & Son - Hanley & I got in
 a whole day. One night with Huffman

May 14-08

From to Hub 5280 True SW
 corner sec 27 of 137-31 bears S $33^{\circ}42'$ W
 32.70 feet
 At cor sec 27-28-33-34-137-31
 Lost water well for 901084 E 75 lbs
 = 49.50 ft V 108.5 21 W 70 lbs = 46.20 ft
 Head 90108 62 E 40 lbs = 26.40 ft
 Riv 12 N 90 W 17 lbs = 11.22 "
 Both the lost two bearing lines
 gone. We found the cut south S.T.S.
 in first class shape well marked
 and by placing transit so as to
 make them stand on corner
 the measurements are sharp
 Beg at the head of the S.E. 1/4
 sec 27-28-33-34

137-31

May 14-08 Continued Bungo

I chained N 4° W, 46.80 feet to a point where the two lines intersect, then scout 2.70 feet up the meridian to a point 49.50 feet from the line via corners and set pin "A"

Bag @ head of SW 13T, U 9° I chained N 21° E 38.30 feet to a point where the two lines intersect, then scout up the meridian 7.90 feet to a point 46.20 feet from the line via corners and set Hub "B" Distance Between Hub A & B is 5.20 feet

Hub A goes N 2.7 feet. Hub "B" goes S 20.5 feet where I place the line corner to sections 27-28-33-34-137-31

Correcting the S boundary of Sec 27-137-31

@ 5280, True SW corner stands S 33° 42' W 32.70 feet we come back & set Hub 4749 goes S 33° 42' W 29.41 ft

"	4056	"	"	"	25.12 "
"	3960	"	"	"	24.51 "
"	3762	"	"	"	23.30 "
"	3274	"	"	"	20.28 "
"	2640	"	"	"	16.35 "

where we placed an old oak stake in the center of little 1 foot creek for run corner.

Quit for dinner. Jake Hoffman helped me check up in a.m. and

Frank Hoffman & Jake Hoffman helped me survey in P.M.

Dinner with Hoffman

(5)

43

137-31

May 14-08 Continued Bungo. P.M.

Jake and Frank Hoffman working

Beg @ Hub 2640 N. near 1/4 on west side sec 23-137-31 we continued transit line north.

@ 2650 ft leave road grade enter slew

@ 2740 ft leave slew enter low land

@ 3510 ft enter slew

@ 3832 ft - Center of 10 foot creek Pos E.

@ 3960 Hub Temp 1/16

@ 4100 leave slew on meadow

@ 4965 stake marked "Culvert site"

@ 5280 True Stone cor @ NW cor 23-137-31 sets north 5. feet -

Correcting back

3960 we set north 3.75 ft -

Hub 2640 is to go north 2.50 ft but we did not correct it and Hub

1320 is to go north 1.25 ft. I

told Hoffman to correct Hubs 1320 and 2640 some time if he wanted to

Quit for the night

Jake Hoffman got in one day

Frank Hoffman got in 1/2 day in P.M.

Over night with Hoffman.

The Bungo Town Board met - &

I sent my bill in in the morning for 40.00 and Mr. Hanley brought me a town order for that amount and Jake Hoffman cashed it

The bill was May 12th 08 going to Bungo in night 2.00

May 13-08 worked on survey one day 4.00

" 14-08 " " " 4.00

10.00

64

⑥

137-31

Bungo Township

May 15-08

Rained all day yesterday and all day to-day. Got breakfast with Hoffman and after I paid Mrs Hoffman \$2.50 for board Jake brought me to Pine River arrived 10 AM.

I get no pay for to-days work.
Dinner at home

May 16-08 The Pine River Town Board met and paid me \$4.00 for one days work in chaining road with John Luf
see page 49. May 10-08 Sunday.
staid home all day

May 17-08 Sunday home all day
fixed wire fence

E. M. Hinch. Clerk and Road Inspect-
or for Bungo Twp.

John W. Curo

①
139-30

65

May 18-08

Backus.

Pine River and Powers survey

John P. Leaf and I left Pine River
with team of Tom Vosh - Leo & lower dinner
dinner at Helm House at Backus and
I paid 50¢ for Leaf & I

P.M.

John Leaf - James Aquilla Newman ch-
Geo. Bloom and John Bloom ax

- Bag @ True $\frac{1}{4}$ post formerly set by me
on N. side sec 32-139-30 when
I ran 8'50' through a lock set in Hub by me.
@ 471.5 ft - Tack in Hub formerly set by me
for SE cor Backus Cemetery
@ 663.5 Old Hub set by me last summer
@ 1326.9 Stake being true $\frac{1}{16}$ post set-
by me last summer for Zoffke's
SE corner.
@ 2653.8 set Temp can sec 32.
@ 3980.7 " " $\frac{1}{16}$ post
4340. W. edge of little round 4. Rod steel
4580 leave high ground N of River
4592 into River bottom
4646 N edge of blind stream
4670 leave blind stream = N. edge Island
4781 S. edge Island = N. edge main River
4828 S. Bank main River. Thence up high
hill - @ about 4950 top of hill
5307.6. True $\frac{1}{4}$ post formerly set by me
on South side 32 sec 1.10 ft N
and about 0.5 feet East -

This shows that there is a foot differ-
ance between my last year's measure-
ment and now. Over night with Bloom
& Leaf got in 1 day for Powers Newman & Bloom
 $\frac{1}{2}$ day for Powers.

U.6

(2)

139-30

May 19-08.

Backus

Working for Powers & Pine River^{Tr}

John P. Leaf - James Agulla Newman
 charring. John A. Bloom and
 Geo. R. Bloom as men & H. Bloom
 in the background.

After tying our N & S cen
 line, into the tide $\frac{1}{4}$ post on the
 South side of Sec 32-139-30
 we run East on 8°30'00" on Range line
 @ 150 brow of hill @ 200 foot of hill
 and edge of srew

@ 250 Slew extends N 20 feet. 300 leave slew
 1320 Hub Tamp $\frac{1}{16}$ 1430 brow of hill
 1500 foot of hill enter dry swamp
 @ 2338 Hub in old & skid road
 33 feet west of west shore of Sand L.

Looked for Meander Post No 58- of
 Twp. 139-30. But it was gone.
 Boat water call for White Birch 10
 S 5 E 10. lks. W Birch 10 N 45 W 16 lks.

We took our axes and cut and
 dug up every old log both in the
 water and out and made positively
 sure there was no beaver tree in
 instance. Newman cut his
 foot and went home to Bloomer
 at 10. a.m. Quit for dinner
 P.M.

Newman done up his foot
 and resumed work after dinner.

Setting Transit on Hub
 2338 I sent Leaf around
 the south end of the lake with

See Fisher Survey BK 241-1938

67

③
139-30 Backus

May 19-08 Continued

the flag and placed a hub
on East shore of lake near
M.P. No 56-139-30. Post
around lake. Set Transit
on Hub just set by Leaf.
Meander Post No 56 at 139 (R 30),
sets North 39. feet.

The boat water call for "N 18 0 9 E
70 lks" "only one"

We found the stump marked B.T. and
set our stake @ 9° 0' on or meridian
measurements taken from head of stump
stake sets 2. feet out in the water

To correct the line just run,
on west side of Sand Lake, I
presume the Government measure-
ment to be correct. Between M.P. 56 just
set, and the 1/4 post on S side
of 32-139-30 and call the whole
distance, 4000 lks and 1145 lks
equal 5145 lks or 3395.70 feet.

Correcting the S. Bdry SE 1/4 32-139-30:
Hub 13200 goes North 15.16 feet

" 2338 " " 26.85 "

This will precisely put them on a
true E x W line but as it would take
too long to get the true measurement
across S end of Sand Lake I call
it "good enough" but do not contend
that Hub 1320 is the true 1/16 cor Nor
that 2338 is any certain distance from
the true Meander Cor

Beginning at Meander No 56
139-30 we run E. 08° 30'

68

(4)

139-30 Backus

May 19-08 Continued

Beg @ MC 56. 139-30, on E side
 Sand Lake we run E. Leaf and Newman
 chaining @ 248 ft Hub
 @ 360 ft John Bloom's stable nth
 South 31 feet Residence about 150 ft S.
 @ 564. 30 ft Hub Temp $\frac{1}{16}$ post-
 @ 886.30 Hub Quit for the night

Newman - Leaf and Bloom Bros
 got in a whole day for Pine River
 and Powers Twp.

Leaf - Newman & I are to get pay
 for our work, but the Bloom
 are to cut the brush 'free' for
 the two Twp in order to get
 a road.

Leaf and I over night the Bloom

Leaf and I went to Backus and I
 wrote a letter home to Pine River; we decide
 to change our boarding place by
 going home and will probably go
 tomorrow, and after that
 drive with Leaf's team from Pine River

The Deputy Sheriff took Elmer
 Chambers from Woman Lake to
 Walker via Backus.

(5)

69

139-30

May 20-08 Backus.

Working for Powers & Pine River Twp.

Leaf-Newman-Bloom Prior

We corrected up the south boundary of
SE $\frac{1}{4}$ 32-139-30 as per schedule
given on Page 67, and set a few
good stakes between the water marked
"Road Cen"

Reg @ Hrb 2338 ft E of $\frac{1}{4}$ post on S
side 32-139-30 and 33 feet west of
the High water mark or sea wall on
West side of Sand Lake we lay out
cen line of wagon road around
south end of Sand Lake keeping
the center of the road 33 feet
from sea wall or high water mark.

Reg @ Hrb 2338 $N 8^{\circ} 30'$ Thence $S 17^{\circ} E$ 100 ft to Sta 2" S $25^{\circ} 50' E$ 75 ft to Sta 4.3" S $40^{\circ} 25' E$ 75 " " " 5.4" S $60^{\circ} 22' E$ 60 " " " 6.5" S $73^{\circ} 38' E$ 56.4 " " " 76.3 Being a post

on the sec line between Secs 4 and 5
138-30, 33 feet S of Meander Post $N^{\circ} 23'$
of Twp 138-30

@ MC 23-138-30 Govt notes call for
NP 24 N 65 W 36 hrs.

134 P 15 S 58 E 31 "

We found tall NP stumps plainly
marked facing the lake and as the
lake shore is high and sea wall
abrupt the Govt Surveyors must have
meant NP 18 "S" 65 W instead of "N"
65 W. Reverse the course and set MC Post

139-30

Bocker

May 20-08 Continued

so as to fit the conditions found at the lake shore. I found JP stump roots which seem to fit the courses and measurements of the other being the but no figures on them.

Log ice No 14 + 17. 25 H-3 + 35 H-E7 MC 23.

Beg at the point above mentioned: S.E.
33 feet south of MC 23. At Sta 6 we run
Thence S $73^{\circ} 38' E$ 170 feet to Sta 7
" N $85^{\circ} 30' E$ 170 " " " 9 8
" N $75^{\circ} 42' E$ 110 " " " 10 9
" N $66^{\circ} 33' E$ 125 " " " 11 10
" N $59^{\circ} 36' E$ 240 " " " 12 11
" N $54^{\circ} 30' E$ 184.3 " " " 13 12

Being a point on the Twp line, between
Twp 138 and 139, 90 feet East of M.C.
No 22 Twp 138-30 on East side of
Sand Lake.

Took dinner with the Bloomers and in
P.M. John Luf paid Geo Bloom \$1.25 for board
and Ald J H Bloom 50¢ for two lodgings
I paid J H Bloom \$2.00 in fuel for 2 days board
being fed on mud turtles and Herb tea.

Luf went to Backus to get team
to take us home and I continued the
survey a little way East of Sand Lake
4 P.M. I sent Newman to see the
Chairman of Powers Twp Board about
getting better axmen.

Newman - Luf - I & Bloom Bros got in a
whole day but Bloomer get no pay.

Hiram Vaness & Luf arrived at 5.30 pm
and we drove to Pine River just in time
to escape the rain. J H. Crosby & Bio
Tab Co. Danville Va is the address
Bloom governor of a Tobacco Co who want
agents. Over night at Home.

⑦
139-30

71

May 21-08

Backus

Working for Powers & Pine River Taps.

John Luf & I left with Luf team and drove to Lake Hattie dam where we were to meet Mr. Newman and a new ax man. Rained & Rained

We found Bat Bearing trees (stump) to Meander Port No 28 & 139-29 on E side Lake Hattie. where the Govt notes call for W.P. 24 N 47 E 47. lks W.P. 24 South 14 lks but we did not set the post.

Set transit near MC 28 and look sight west across Hattie Lake.

Then went around and looked for MC. No 33. 7139-29 found one B.T. being a dead white pine. but did not stop to look for the other.

Govt notes call for W.P. 15 S 19 1/2 E 15. lks. N.P. 18 N 73 W 22. lks. we did not look for the N.P. but followed old blazed line west and found the Bearing trees to the corner of Taps

138 and 139. Rgt 29. and

138 " 139 " 30 we did not

stop to set the post or it began to rain. we got back to Lake Hattie dam at noon where we met Newman and Gregory Granger of Backus with Pearl Vanepps and a driving team. it rained so hard we decided to Bunch it for the day and we all drove home. Luf - Newman - I and Granger got in a whole day

I sent Harold H. S. ychs the bill of his time to Backus. on P.M. mail. Over night at home.

139-30

May 22nd 08

Backus

Working for Pine Rivernd Powers Twp.

Leaf's horse took sick and he got a lively team of Tom Vork to drive us out to Lake Hattie and come back plus us in the evening.

Arrived at Hattie @ 9.00 AM where we met Newman and Gregory & rangers

We set the S.E. Co. of Twp 139-30 from all four B.T.S. Measurements are all about half a foot long but would be about right if measured from face of trees. Set Co. without taking courses, just in the rough and run West $8^{\circ}30'00''$.

@ 150 ft cross small hill entire foot of Big Hill 40 feet high.

@ 285 ft Hub on Top Big hill

@ 450 foot of W. side of Big hill. Thence up slope of hill through 19 p trees and hard wood brush

@ 707. Hub Top of hill. Took dinner on W. bank of Hattie lake.

P.M. Continued west

Thence down slope of hill @ 1050 foot of hill
1100 top of little hill / 1200 foot of hill

@ 1301 Hub on side hill

@ 1320 " " Top of little hill

@ 1585 Hub Top of Big hill. 1680 foot Big hill

@ 1932 Hub " " hill 2520 foot of hill

@ 2640 Hub top of hill. True $\frac{1}{4}$ on S side
36-139-30, sets S $37^{\circ}00'00''$ W 24 feet

Set $\frac{1}{4}$ post on S side 36-139-30 from two B.T.S. but only in the rough with no courses taken

(9)
139-30

73

May 22-08 Continued Backus

at SE cor Twp 139-30 Gout field notes
call for, BP 8 N 21 E 54 lks. BP 8 N 40 1/2 W 35 lks
BP 5 S 47 W 24. lks BP 8 S 48 E 32. lks
they are all in good condition except the N.E. one.
which has broken down but "B.T." is on the stump

at 1/4 post on S side 36-139-30
Gout notes call for BP 6 N 22 1/2 E 7. lks
BP 7 S 39 W 12 lks. Both in good condition

Beginning @ 1/4 post S side 36-139-30
we run W. 8° 30' 00" @ 180 feet cross old road
in reverse, running N & S. between two
big hills

@ 362 Hub on side hill. Quit for the
night Newman and Granger
took a Bee line for Backus through the woods
and Leaf & I walked S.E. a mile to little lake
where we met our literary team and come home
to Pine River.

Newman - Leaf Granger and I
got in a whole day for Towns & Pine River
Townships.

Correcting S. bdy of SE 1/4 Sec 36-139-30

Hub 3640 goes S 37° W 24 ft

" 1932 " " " "

" 1585 " " " "

1320 " " " 12. "

707 " " " "

285 " " " "

over night at home

74

(10)

139-30

May 23rd 08

Backus

Working for Powersnd Pine River Traps

Leef and I worked all day alone, the rest of the crew must have got lost. Beginning at Hub 362 West of $\frac{1}{4}$ port on S side sec 36-139-30 we continue the transit line West $18^{\circ}30'$ @ 498 Hub on top of Big Hill. 6.25 foot of Kell enter level ground 940 cross old log road run N & S

@ 1010 Hub - @ 1260 Hub. @ 1320 Hub Temp $\frac{1}{16}$ in cen of old wagon road running

S 80 E and West. Thence West along road through heavy Jack Pine timber

@ 1956 Hub near old wagon road at which point old road runs S 80 W

@ 2640 Hub Temp Sec Cor.

True SW cor sec 36-139-30 sets S 76° W 17.6 ft

At SW cor sec 36-139-30 four nails call for.

BP 8 N 12° E 21. lks. BP 5 N 65° W 118. lks

BP 7 S 16° W 38" BP 6 S $31\frac{1}{2}^{\circ}$ E 42 lks.

We drove out with Leef's team and got in a whole day.

Newman and I ranger did not work.

Leef + his team and I got in a whole day correcting S Body SW $\frac{1}{4}$ sec 36-139-30

Hub 2640 goes S 76° W 17.6 ft

"	1956	"	"	"	"	"
"	1320	"	"	"	"	8.8 "
"	1010	"	"	"	"	"
"	498					

Sunday May 24. 08 staid home. Rained

May 25 staid home

" 26

"

"

"

"

⑪

75

139-30

May 27-08

Backus

Working for Powers and Pine River Traps

398

~~74 - 124-127~~

~~77 - 123-124~~

~~85 - 124-127~~

~~90 - 1-25~~

~~90 - 48-51~~

~~90 - 58-60~~

~~92 - 12-25~~

~~95 - 65-84~~

~~95 - 106-110~~

~~95 - 119-125~~

~~95 - 140-160~~

~~98 - 40~~

mill -

mile

House

where

NEC

and

from

@

fr. B.

BP 7

W

B.T.S.

on 13

con

Be

all

@ 500

1085

@ 1320

1420

Ther

tom sw

of hill

of hill on

Leaf an

Newma

noon

morning

get pulled for a whole day.

Newman & I chained in P.M.

ills

aga

little

138-30

to

es

89-30

modification

call

lks

orn

es

9-30

or

rat

now

but

at

men

ck

and all

(11)

75

139-30

May 27-08

Backus

Working for Powersnd & Pine River Turps

J. Leef & his team drove to Hills mill in Chen Sec 2-138-30, thence NW half a mile to Chas Casper's place being a little house near the $\frac{1}{16}$ port S of NE cor Sec 2-138-30 where we left our team and walked to NE cor Sec 2-138-30; found our tools and set the line SW cor Sec 36-139-30 from 4. B.T.S., all up and in good condition.

@ SW cor Sec 36-139-30 boat poles call for BP 8 N 12 E 21. BP 5 N 65 W 118 lks
BP 7 S 16 W 38 lks BP 6 S 31 $\frac{1}{2}$ E 42 lks

We set the line corner from all four B.T.S. - by measurement from figures on B.T.S. checked out fine but no courses taken

Beginning at NE cor Sec 35-139-30 we run lightest line west 8° 30' on @ 500 ft cross wagon road 1065 Hub
1085 Big Rock stands south one (1) foot
@ 1320 Hub Temp $\frac{1}{16}$

1420 Tack in slumps Top of Hill

Thence down hill @ 1715 enter long narrow low swamp, near south and NW. Out foot of hill @ 1905 leave swamp enter foot of hill on swamp island. Quit for dinner P.M.

Leef and I ate our dinner at the big rock Newman & Granger arrived at noon, tho they left Backus in the morning with a livery team and will get paid for a whole day.

Newman & I chained in P.M.

139-30

May 27-08 Continued Backus

continue west @ 2008 Hub on E brow of hill island in swamp.

@ 2099 Hub West brow of hill being island in swamp. 2220 foot of hill enter Swamp Bear N & S.

@ 2490 leave slew enter foot of long slope on island on long point - in swamp @ 2640 Hub on top of raise on island on long point - surrounded on E, W and N side by swamp.

@ 2665 Hub. True $\frac{1}{4}$ point on S side 35-139-30, stands South 2. feetWe set true $\frac{1}{4}$ point on S side 35-139-30 from both B.T.S. slumps.correcting South boundary of SE $\frac{1}{4}$ 35-139-30:@ 2665 True $\frac{1}{4}$ point sets South 2. feet

2099 goes South

2008 " "

1420 " "

1320 " "

1065

@ $\frac{1}{4}$ point S. side 35-139-30 Goat notes
 call for NP 18 N 50 $\frac{1}{2}$ E 45 links = 2970 ft
 NP 20 S 11 E 40 lkr = 2640 ft

Line through in whole line
 N 1000 ft - 400 ft - 400 ft - 400 ft

(13)

77

189-30

May 27-08 continued

Bocher

Beginning at $\frac{1}{4}$ port on S. side 35-139-30 Run W $8^{\circ}40'$ or in order to miss some trees.

@ 85. leave island, enter narrow slen N & S

@ 250 leave slen enter Pop & Pine quite level.

@ 400 Cranberry bog lays S. 200 ft and edge of water about 1600 "

10 acre lake lays in SE corner of NE of NW $\frac{1}{4}$ Sec 2-138-30. Chos corpus house slands about 1600 feet south of $\frac{1}{4}$ port on S. side Sec 35-139-30

@ 614 Hub @ 1020 Hub. Can see Brockway lake about 80 rods N.

@ 1320 Stake @ 1410 Hub Quit for night

Quit for the night. Granger-Newman - Left & Team, and I got in whale duty.
Over night at home

139-30

May 28-08

Bochar

Working for Power & Pine River Timber

J. A. Whittemore - J. A. Newman -

Tranger - & up & Team & S

Beg @ Hub 1410 W of $\frac{1}{4}$ post S side
Sec 35-139-30 and continued transit
line west. Newman & S chaining

@ 1860 touch south point of little seam

@ 1940 little spring lays N 10 ft

@ 1950 leave south end of little seam

@ 2079 Hub on rain

2220 cross wagon road 135 N & S.

2310 level slew

With transit set on Hub 2079 take
stadia measurement to a hub set
on west side of slew. Distance reads

670 feet making total distance 2749 ft

True SE cor. sec 34-139-30 is 90 ft

E & 17 ft N. Total distance across
S. Boundary of SW $\frac{1}{4}$ Sec 35-139-30 is
2659 ft.

@ SE cor Sec 34, goat notes call for

BP 10 N 26 $\frac{1}{2}$ E 82 lks

" 8 N 45 W 29 "

WP 12 S 56 $\frac{1}{2}$ W 73 "NP 22 S 31 $\frac{1}{2}$ E 121 "we found the SE & NW 13 ft but
the others were gone. Distance to 13 ft S.
was about 2 feet long and the SE
13 ft. set 3 ft too far west at first
attempt at setting so I took rough
measurement and set the stake in
the rough within one foot or less of where
it must be. post set S in water

(15)
139-30

79

May 28-08 Continued Bachus

Correcting the South boundary of
SW $\frac{1}{4}$ Sec 34-139-30

2659 goes North 17 feet

2079 " "

1410 " "

1020 " "

614 " "

Beginning @ NE corner 34-139-30
run W 8°30' 0" @ 25 ft leave water in stream
260 cross old wagon road NW & SE
thence up long slope, 675 E brow of hill
700 Hat on hill. 839 Hat W. Brown of hill
lower than E side of hill. @ 900 ft foot of hill
thence along level ground.

@ 1125 feet old wagon road lays
North 20 feet Run E & W.

1320 Hat 20 ft S of E & W road

1450 cross wagon road E & SW

1565 fork of two roads NW & SW

@ 1630 Hat Top of low long grade

@ 1819 Hat on W. brow of hill. Thence
down long uniform slope

old E & W wagon road lays S. 25 ft

@ 2150 E & W road lays S. 25 ft

2247 Hat bottom of slope.

2640 " "

2654 line $\frac{1}{4}$ part S. side. See 34-139-30
sets South 2.60 ft

Gout nails call for

NP 18 S 47 E

NP 20 N 4 $\frac{1}{2}$ E

129 } also both slumps
106 }

in fair condition

80

(16)

139-30

May 28-08 Continued Bockus

Crossing South boundary of SE

4434-139-30

2654 goes South 2.6 ft

2247

1819

1630

1320

839

700.

1.30 ft

Beginning @ $\frac{1}{4}$ past 8 side 34-
 139-30 We run W 8° 30' N
 @ 70 ft enter slew 260 louch south point
 of solid JP land. then follow along N.
 side of Swamp & S side hard land
 @ 361 Hat. @ oil for night
 Whittmore - Newman - Granger
 Leaf & Team & I got in whale day.
 over night at home.

At Whittmore Trussie Powers Twp
 Towns Lat 3 & SW $\frac{1}{4}$ 35-139-30
 Bickly Ames NW of NW $\frac{1}{4}$ 2.
 138 & 30 owns whale NW $\frac{1}{4}$

(17)
139-30

81

May 29-08

Backus

Working for Pine River & Powers Trunks.

CHARTERED 1853

Agricultural
Insurance Company,
of Watertown, N.Y.

Fire, Lightning, Windstorm, Marine, Automobile,
Sprinkler Leakage, Riot and Explosion
Insurance

Mr Green.

It is very important that I get
the plot as soon as possible
so want you kindly get it
to get at the earliest time.

Kindly communicate with me
at the following address -

F. M. ROCKHILL
4837 N. DRAKE AVE
CHICAGO
ILL

(17)
139-30

81

May 29-08

Bachus

Working for Pine River & Powers Traps.

Whittemore-Newman-Granger-Luff
& Team. Beg @ Hub 361 W of $\frac{1}{4}$ post
on S side 34-139-30 we continue
transit line west 8:30 AM

@ 600 feet GP point-lays N 25 ft Swamp
Bears N + SE @ 840 ft leave swamp.

@ 1101 ft Hub on raise

@ 1320 " Stake enter slen. N + S.

@ 1950. leave swamp: foot of big hill

@ 2310 Hub on Top of big hill

Quit for dinner

PM.

@ 2640 Hub Temp'k @ 2652. True cor
stands South 7 ft.

@ SW cor in 34-139-30 by outmole's call
for NP 22 N $11\frac{1}{2}$ E 70. lbs

NP 20 N 13 W 54 "

NP 20 S 54 W 44 "

NP 28 S $76\frac{1}{2}$ E 83 "

SW & NW are true plain but other
two are gone. I set the corner in through
by measurement from heart of trees.

Quit at 2 PM. on account of rain
all going in a whole day.

correcting S by SW $\frac{1}{4}$ 34-139-30

2652 goes South 7 feet

2310 " "

1320 " " 3.5 "

1101 " "

361 " "

Herald come home from Hackensack.
Overnight at home P. River

82.

(18)

139-30

Bochus

May 30-08 laid up on account of rain.

May 31-08 Sunday Working for Power
and Pine River Traps

Nels Sutherland - Henry Lef - John Lef. and
Team of Tom Vork. no driver

Reg @ NE Cor Sec 33-138-30 we run W
8° 30' 00".

@ 723 lat Hub on level ground. @ 1320 Hub
on level ground.

@ 1391. W brow of table land Hub.

Thence down slope: 1825 foot of hill

1860 enter swamp @ 2130 touch paper
point - coming from the south

@ 2172 Hub on low hard land

@ 2200 enter Tam swamp

@ 2640 Hub: True $\frac{1}{4}$ post on S. side Sec 33

138.30, in Tam Swamp, lays south

27.7 ft. at this point Gout notes call
for Tom 4 N 21° W 27 lbs

" 4 S 38 E 6 lbs: we found one
NW 1/4 T. from which we set true $\frac{1}{4}$ post

Correcting S Bdy of SE $\frac{1}{4}$ Sec 33-138-30

2640 goes S 27.7 feet

(19)
139-30

83

May 30-08 Sunday Continued Backus

Then going to Hub 564.3 East
of Meander spot N 22, 138-30 we
continue liant line East 8° 25'
@ 886.3 Hub on hill

@ 1205 Hub E. brow of hill

@ 1365 foot of hill. enter swamp

@ 1884.3 pin in swamp Temp $\frac{1}{4}$ on

True $\frac{1}{4}$ post sets straight East 51.7 feet

1936 being total distance

No correcting up to 20 on this run

Quit for the day and drove to
Pine River. All got in a full day.

Following is the bill I sent in
for the above work. Pine River Minn.

June 3-08 Twp of Powers to John W. Cline Sr.
Engineer work in survey of wagon road
on liant line between Powers & Pine River
Twp on N side 138-30 & S. side 139-30

May 19-20-21-22-23-27-28-29-31-1908
making 9 days @ 400 3600

Making plat of survey for Powers Twp 200

" " " " " Pine River 200

one half of this to be paid 540.00

by Pine River Twp 2000

leaves at balance due of \$20.00

Powers & C. June 3rd 1908

May 18-08 Survey of wagon road N & S.
thru cen of sec 32-139-30. one
mile @ 4.00

Both these bills was paid in one
order for 2400 from Powers and 2000 from
Pine River Twp.

Pine River June 1st '08

Dedication of road as follows: To the board of Commissioners appointed by the Trustees of Pine River and Powers Twp to superintend the survey of a wagon road along the south boundary of Twp 139 N Rge 30 W 5 P.M.
The undersigned John W. Cucco having been instructed by you to make said survey would report that the following is a correct survey thereof as made by me under your direction to wit:-

Beginning in cen of old lead road at Sta 0. being the Govt $\frac{1}{4}$ part on S. side of Sec 32-139-30 and running thence S $89^{\circ}57'$ E following Twp line 2338 feet Sta 1. being a point on the Twp line 33 feet west of shore of Sand Lake: thence S $17^{\circ}E$ 100 ft to Sta 2. thence S $25^{\circ}50'E$ 75 ft to Sta 3. S $40^{\circ}25'E$ 75 ft Sta 4. S $60^{\circ}22'E$ 60 ft Sta 5. S $73^{\circ}38'E$ 56.4 ft Sta 6. being a point on line between Secs 4 and 5. N $138^{\circ}N$ R 30 W 33 ft So of Meander Post No 23 T 138-R 30. thence S $73^{\circ}38'E$ 170 ft Sta 7. N $85^{\circ}30'E$ 170 ft Sta 8. N $75^{\circ}42'E$ 110^{sta} ft Sta 9. N $66^{\circ}33'E$ 125 ft Sta 10. N $59^{\circ}36'E$ 240 ft Sta 11. N $54^{\circ}30'E$ 184.3 ft Sta 12. being a point on the N. body Sec 4. 138-30. 90 ft E of Govt Meander Post No 22 of T 138-30. S $89^{\circ}57'E$ following Twp line 1846 ft Sta 13. being the $\frac{1}{4}$ part on South side Sec 33-139-30. S $89^{\circ}57'E$ 2640 ft to Sta 14. being SE Cor Sec 33-139-30 S $89^{\circ}57'E$ following Twp line 2652 Sta 15 being $\frac{1}{4}$ Cor S side 34-139-30. S $89^{\circ}57'E$ 2654 ft Sta 16. being SE Cor Sec 34-139-30. S $89^{\circ}57'E$ 2659 ft Sta 17. being $\frac{1}{4}$ on S side 35-139-30 S $89^{\circ}57'E$ following Twp line 2665 ft Sta 18. being SE Cor 35. S $89^{\circ}57'E$ 2657 ft Sta 19. $\frac{1}{4}$ S. side 36. S $89^{\circ}57'E$ 2655 ft Sta 20. being SE Cor 36-139-30. and then terminating.

John W. Cucco

138-29.

Monday June 1st 1908

Pine River

Working for 15th Judicial Dist^{ct}
an Con & Crowd firing Co road.John Legatt - RR "Rennie" Jerome Paul Legatt -
Bill Fleaker - Geo Robidoux.We set the SE Co Sec 33-138-29. from
40 Bearing trees which do not check out
for course or distance. - Run N 40° 35'

@ 467 ft Hub 1320 Hub 2035 Hub

2640 Hub limp 1/4 part no bearing trees

@ 3526 Hub 3720 enter swamp. 3840

leave swamp - 3960 Hub 4565 Hub

4600 enter meadow 4740 cen of 12 foot

creek runs West 4810 leave meadow

~~5200~~ H 5002 Hub 5162 Hub on Beaver

dam S of creek. 5200 cen of 12 foot

creek runs SE. 5280 Hub

True Co to Sec stands N 20 ft x E 1 ft
making total length 5300 ft.@ 27-28-33-34-138-29. 4 out water call
for WP 12 N 55 E 75 lbs = 49.50 ft stump

still there not marked. Ash 8 S 32 E

41 lbs = 27.06 ft stump still there down. figures

dim Identified by John Legatt and Mr
Whili. Lined 12 N 26 W 59 lbs =

38.94 ft gone. Laid not correct this line

not chained close but run perfect

all got in whole day. over night

at home. dinner at Restaurant with

Legatt

(2)
138-29

87.

June 2nd 1908

Pine River

Working for Cass & Crow Wing Counties
John Leggett - R.P. Leggett - Geo Kobideau
+ Bill Feakes. Beg @ Cor Secs

27-28-33-34-138-29 Run N on $6^{\circ}45'$ or
@ 50 ft leave river bottom 810 Hub in
Pop thicket. 1200 enter River meadow
1320 Hub. ^{in meadow} Temp $71/16$ @ 1931 Hub in meadow
2640 Hub in meadow. True $1/4$ stands
East $31'$ left. We set the true $1/4$
between Secs 27 and 28-138-29 from one
Twp 8 N 35 W 34. lkr = 22.44 ft only one
we found the Tamarock plainly marked but
laying face down in the water and we
laid it carefully back. Slump stand from
 0° or meridian. Measured from Head.
Some one has set posts in all directions
but never found the true Beaumont
before. took dinner with Leggett. Harold
rode to town with Leggett.

P.M.

Beg @ $1/4$ post between Sec 27-28-138-29 we
run N $6^{\circ}30'$ or @ 450 ft leave meadow
leave NW & SE. 733 Hub in ploughed
field 1320 stake 1420 enter meadow
water runs SW 1620 leave meadow
enter wet land along Pop point
1730 Hub 1770 enter S. edge of little
lake which extends 250 ft west and
400 ft East.

Transit set at Hub 1730 I cause a
flag to be placed at water's edge on N.
side of little lake, and read Stadia
distance Rod reads 600 ft - making
the distance across the water
just 560 ft from S. side of Lake to

88

③

June 2nd 1908
Continued

Pine River

138-29

Hut 2330 on N bank of lake. @ 2330 leave
lake enter low but solid ground, at 2632
H-Hut True Co. Stands East to cut
@ cut to see 21, 22, 27, 28-138-29
Notes call for:- W Bch 6 N 49 E 9 lks. Gone!!
L and 6. N 43 1/2 W 65 lks. Gone!!

W Pm 6 S 25 E 55 lks = 36.33 ft this is
the line from which we set the line corner
at 9° Var as true meridian. measured
from Heart of stump. line is down but marked
stump stands & plainly marked. "BT"

Quit for this day. John Legatt. R.P.
Legatt, Bill Flaks, Geo Robideau & I
got in whole day, John Legatt R.P. ~~got~~ helped
us all day but not on the pay roll as
the law only allows 2 chamber & one ax man
John Legatt I worked as "Commissioner"

I corrected this line after the rest all
quit for the night as follows

2632. goes East 4. ft -
1730 I set 2.6 ft East and marked tall
stake "Road Cen." Set Hut 733. @ 1.13
H-East - marked tall stake "Road Cen"
no more correcting necessary on this
half mile.

The survey was changed later so as to run the
road line around the west side of the lake
see Page 9.

(4)

89

138-29.

Pine River.
Co Line RoadWednesday June 3rd 1908.

Beg @ line corner to Secs 21-22-
27-28- 138-29. R.P. Legatt. Bird Feaks - as
Geo Robideau working. Ernil Wicklund
helping Robideau chain in a.m. with
no pay for Wicklund. Run N. on 8th for
along flow wet land. @ 537 feet Hub
544 feet Hub. @ 550 ft enter open
meadow full of water, runs West.
@ 1320 feet Robideau set tall dry poles
pole in cat tails @ 1680 leave meadow
enter Jack pine sand. @ 1751 Hub.
@ 2067 Hub 2640 Hub temporary 1/4 post
between Secs 21 & 22-138-29. Gout
notes call for: N P 18 N 7 W 780 lks =
514.80 feet (only one) It is gone.
at this point the Government Survey-
ors must have made some mistake
as there seems to be plenty of both
old and new pine trees close to
the place where this stake should have set
they may have been right. Continued N.
transit line. @ 3189 Hub 3558 Hub in road
3960 Hub-4132 Hub-4814 Hub-5280 Hub
Temp or. Then corner to Secs 15, 16, 21,
22, 138-29, stands 64. ft South and
50. ft East Total length of line or
measured by Wicklund-Robideau and I
(not carefully) is 5216. feet. At this
point Gout notes call for:

Bk P 6 N 69 E 51 lks = 33.66 feet

" " 4. N 67. W 106 " = 69.96 "

Bk P 5 S 48 E 9. " = 5.94 "

" " 4 S 25 W 7. " = 4.62 "

all of the lines are there and check out
fine from heart of line. no courses
taken

Over

90

(5)

Pine River 138-29 County Line Road
June 3rd 1908, Continued

Beginning @ Cor to Secs 15-16-21-
22-138-29. VRun N. $8^{\circ}5'$ W or Transit line
following almost on a transit line
previously run by Hicks: at 1320 Hub
2094 Hub in road E & W. 2400 Hub
on hill. 2640 Hub. True $\frac{1}{4}$ part, between
Secs 15 and 16-138-29 sets 16. ft N. and
1.60. f West making total distance 2656.
feet. at this point Gout water call
for NP 16 N $60\frac{3}{4}^{\circ}$ W 408 lks = 269.28
feet. Arp 4 N 13° E 168 lks = 110.88.
We set the line on from heart of NP stump
which is marked "BT" @ $8^{\circ}46'$ W or or
meridian. The aspen is gone.

Whole crew got in a day. Quit for
the day. Over night at home.
Look out a Quack for dinner.

Correcting E. side of SE $\frac{1}{4}$ 16. 138-29

2656	goes East	1.6	ft.
2400	"	West	"
2094	"	"	"
1320	"	"	0.8 "

Correcting E. by Sec 21-138-29

5216	goes East	50.00	feet
4814	"	46.15	"
4132	"	39.61	"
3960	"	"	"
3558	"	34.10	"
3189	"	30.57	"
2640	"	25.31	"
1751	"	16.79	"
544	"	"	"
537	"	"	"

(6) 138-29 Pine River 91

June 4-08

County line Road

We all drove with Legatt's team to Horse Shoe Lake.

R.P. Legatt, Geo Robideau Bill Feaks working. Robideau & I chained.

John Legatt was with us part of the time. Going to M.C. N^o 5 on N. side Horse-Shoe Lake we established the true corner from one bearing tree called for as: "BP 5 N 85 E 42. lks = 27.72 feet" Set on 9th or measured from heart of tree. placed good stake and piled high pile of big rock around stake to hold it in place.

The "BP 8 N 55 W 32" = 2 1/2 ft is gone tho there is a pine stump 2 feet too far away which may have been the one.

Going to M.C. N^o 3. on so side Horse-Shoe lake we established the true point from one white Pine 16 S 27 W 217 lks = 143.22 feet or 9th as Meridian and measured from heart of stump. The tree has been cut down and the fingers are dirt tho they are there and there are no other pine stumps that could possibly be the one. Aspen 4519 E 60 lks = 39.60th is gone.

Placing monument on M.C. 3, and using M.C. 5 as back sight we run south on 8°45' or @ 318th Hub on Hill Top. 848. Hub 1320 Hub 1667 feet Hub. true corner Ka-plunk. This is the 1/4 point between Secs 9 and 10 - 138-29. Set from N.P. 18 S 62 E 422 lks = 278.52 feet. The Asp 3042 W 40. = 2640 feet is gone, or 8°46' measured from heart of tree.

Over

June 4-08 Continued

Coming back to MC. N^o 5 on N. side
Horse-Shoe Lake I run the center of the road
line keeping 33 feet from Sea wall on
High water mark of the lake.

Beginning 33 feet N of MC 5. $\text{N } 8^{\circ} 46'$
I run $\text{S } 75^{\circ} 55' \text{ E } 240 \text{ ft}$ Then $\text{N } 79^{\circ} 47' \text{ E}$
 217 ft Oak plug. $\text{S } 74^{\circ} 10' \text{ E } 258 \text{ ft}$ Oak Plug
 $\text{S } 49^{\circ} 12' \text{ E } 111 \text{ ft}$. $\text{S } 22^{\circ} 10' \text{ E } 123 \text{ ft}$.
 $\text{S } 6^{\circ} 30' \text{ E } 154 \text{ ft}$. $\text{S } 19^{\circ} 18' \text{ W } 160 \text{ ft}$
 $\text{S } 35^{\circ} 12' \text{ W } 300 \text{ ft}$ oak plug on hill top
 $\text{S } 1^{\circ} 32' \text{ W } 278 \text{ ft}$. $\text{S } 39^{\circ} 45' \text{ W } 450 \text{ ft}$.
 $\text{S } 8^{\circ} 10' \text{ W } 268 \text{ ft}$ $\text{S } 23^{\circ} 15' \text{ W } 755 \text{ ft}$
intersecting the section line 132.4 feet
South of Meander Corner N^o 3. on N. side
Horse-Shoe Lake.

Quit for the day. All got in whole day.
Over night at home.

The stakes above mentioned was not changed
but a few days later when I made the plat
I changed some of the descriptions so as to
get the scale, course and measurements
on my plat which was on a small scale.
See page

(8)
138-29. Pine River

93

June 5-08 Friday.

I worked on the plat of the survey of the County line road but the crew all laid off. I put in their time just as tho they worked as they would to give me time to make the plat and will go with me to finish up the survey after I get the plat finished. I have surveyed most of the line so can make the plat without surveying it now as I only have till Monday to get my plat in Blount before court meets Monday.

John Leggett come with his team and we drove to Horse-shoe lake to get the measurement of the bridge site across Backus brook because I will have to have this before I finish my plat.

Beginning @ M.C. N^o 5 on N side of horse-shoe we roughly chained north along sec line. @ 833 feet into river bottom @ 943 feet to bank of Backus brook @ 1073 N bank Backus brook 1113 leave river bottom @ enter road. ~~we~~ quit surveying and caught some fish and then drove home to Pine River in the rain.

I worked on the maps

June 6-08 I worked on the maps and went fishing

94

⑨

138-29 Pine River

Sunday June 7th 08.

Legatt come post haste to house
the survey of the wagon road changed
so as to run around the west side
of the little lake which is south of the
NE corner Sec 28. and we run it
as follows - Beginning at a point 1687. feet
N of the $\frac{1}{4}$ post between Secs 27 and 28
and 83. feet south of a little deep lake
run N 51° W 422. feet N 35° 45' E
468 feet N 69 E 75 feet to a point on the
line 40 feet N of lake and 260. feet N
of cor to Secs 21-22-27-28. - 138-29
Come home and worked on plats

June 8-08 finished the plats and
handed them to Forbes

The dedication of the first set of
maps I made did not go through as
it was not in conformity the judge said,
with the plat. it was as follows.

To the -
Beg @ Sta 1. being SW cor sec 4, 138-29 (should be
sec 34.)
N 40° 11' E on recline at 3720 ft enter swamp.
3840 leave swamp 4600 enter meadow
4740 cross 12 foot creek - runs west
4810. leave meadow 5200 cross of 12. foot
creek runs SE 5300 Sta 2. Cor Secs
27, 28, 33, 34, 138-29. set from old Govt
bearing trees. Thence
N 0° 46' E bet Secs 27 & 28. @ 50 ft
leave creek bottom @ 1200. enter meadow
@ 2640. Sta 3. being $\frac{1}{4}$ bet Secs 27-28
set from old Govt 137. in meadow

138-29 Pine River

June 8-08

Continued

Thence $N 0^{\circ} 46' E$ on sec line @ 450 ft -
leave meadow which bears NW. SE.

@ 1420 enter meadow water runs
2W 1620 leave meadow enter wet-
land. 1687 oak stake Sta No 4. set
on sec line 83 ft 20 of a little deep
lake. $N 51^{\circ} W$ keeping 33 ft from lake
shore. @ 422 ft oak stake Sta 5.

$N 35^{\circ} 45' E$ @ 468 ft oak stake Sta 6.
 $N 69^{\circ} E$ @ 75 ft oak stake Sta 7, being a
point on sec line 40 ft N of little
deep lake 8674 ft from Sta No 4.

(Stadia measurement) Thence
 $0^{\circ} 46' E$ following sec line @ 26 feet oak
stake (this should have been 260 ft)
Sta No 8. being cor to sees 21-22-27-28
set from Old Goat Bearing trees
 $N 0^{\circ} 41' E$ bet 21 & 22. @ 550 enter

open meadow drains West
@ 1680 leave meadow enter Jack Pine

@ 2640 Goat B.T.S. gone.

@ 5216. oak stake Sta 9. Cor to sees 15-16-
21-22. 138-29. set from old Goat
Bearing trees. $N 0^{\circ} 41' E$ bet 15 & 16

@ 2656 ft at Sta 10. being $\frac{1}{4}$ cor bet
15 & 16 $N 0^{\circ} 41' E$ sec line @ 2640.
Sta 11. Cor sees 9-10-15-16.

Thence N along sec line @ 2640

Sta 12. being $\frac{1}{4}$ bet 9 & 10 set
from old Goat B.T.S. Thence N ,
along sec line bet @ 1535 Sta 13.

being a point on sec line # 13 2.
feet South of MC. $N = 3$. on South
side Horse Square Lake Thence
 $N 23^{\circ} 15' E$ keeping 33 feet from
water edge.

over

96

(11)

138-29 Pine River

June 8-08 Continued

@ 755 ft Oak Lake Sta 14
 N $8^{\circ}10'$ E 268 ft Sta 15. N $39^{\circ}45'$ E
 @ 210 ft cross south boundary of sec
 3. 340 feet East of foot Mander
 on N^o 4. @ 450 Sta 16.
 N $1^{\circ}32'$ E @ 278 ft Sta 17. N $35^{\circ}12'$ E
 • 300 ft Sta 18. N $19^{\circ}18'$ E 160 ft Sta
 19. N $6^{\circ}30'$ W 154. Sta 20. N $22^{\circ}10'$ W
 123 ft Sta 21. N $49^{\circ}12'$ W 111. Sta 22.
 N $74^{\circ}10'$ W 258 ft Sta 23. S $79^{\circ}47'$ W
 217 ft Sta 24. N $75^{\circ}55'$ W 240 Sta
 25 being a point on sec line 33 feet
 N of foot MC. N^o 5 on N side Horse
 shoe lake. Thence N $3^{\circ}30'$ E bet sees
 3 & 4 @ 800 feet into river bottom
 @ 910 ft south bank of Backus Brook
 @ 1040 north bank Backus Brook.
 @ 1080 leave River Bottom. @ 4080
 Oak Lake Sta 26. being NW cor
 sec 3 - 138-29.

This dedication and plat was
 sent back and a new set was made
 with the following dedication:

June 8-08 138-29 Pine Run
continued

To the Board of Commissioners
appointed by Hon' W.S. McClenahan,
Judge of District Court Fifteenth
Judicial District:

The undersigned John W. Curo having
been employed by you to make a survey
of a road in said Judicial District
would report that the following is a
correct survey thereof as made by
me under your direction to wit:-

Beginning at Sta 1 being the NW
corner Sec 3, 138-29, 65 PM.
Thence S $3^{\circ}30'W$ 4080 ft to Sta 2,
being a point on the sec line 33 feet
N of Gut Meander No 5, on N. side
Horse shoe lake. Thence S $88^{\circ}E$ 448,
ft to Sta 3. Thence S $74^{\circ}E$ 375 ft to
Sta 4. S $7^{\circ}E$ 378 ft to Sta 5.
S $35^{\circ}W$ 407 ft to Sta 6. S $1^{\circ}32'W$
278 ft to Sta 7. S $39^{\circ}45'W$ 240 ft
to Sta 8, intersecting the south
boundary of Sec 3. At a point 40
ft East of Gut Meander Post
No 4, on East side Horse shoe
lake. Thence S $39^{\circ}45'W$ 210 ft to
Sta 9. " S $8^{\circ}W$ 268 ft to Sta 10.
S $23^{\circ}15'W$ 755 ft to Sta 11, inter-
secting the west boundary Sec 10
at a point 132 ft East of Gut
Meander Post No 3, on N. side
Horse shoe lake. Thence
South 1535 ft to Sta 12, being $\frac{1}{4}$ sec
cor bet 9 & 10. South 2640 ft
to Sta 13, being cor Secs 9-10-15-16.
S $0^{\circ}41'W$ 2640 ft to Sta 14,
being $\frac{1}{4}$ cor bet 15 & 16. S $0^{\circ}41'W$
2656 ft to Sta 15. Cor 15-16-21-22.
S $0^{\circ}41'W$ 5216 ft to Sta 16. Over

98

(13)

June 8-08

138-29

Pine River

being the corner to Sec 21-22-27
and 28. Thence $S 0^{\circ} 46' W$ 260 ft to
Sta 17, being point on the line 33 ft
N of Deep Lake. Thence $S 69^{\circ} W$ 75. ft
to Sta 18. $S 36^{\circ} W$ 468 ft to Sta
19. $S 51^{\circ} E$ 422 ft to Sta 20,
intersecting the West boundary of
sec 27, at a point 33 ft South of
Deep Lake. Thence $S 0^{\circ} 46' W$ 1687. ft
to Sta 21, being $\frac{1}{4}$ Cor bet 27 & 28,
 $S 0^{\circ} 46' W$ 2640 ft to Sta 22, being
Cor to Secs 27-28-33 & 34,
 $S 4^{\circ} 11' W$ 5300 ft to Sta 23, being
SW Cor Sec 34 all in trap 138 N
Range 29 W 5 PM. Moni sola

I hereby certify that the above is
a correct copy of the survey of
road run South six miles
from the NW corner of Sec 3- T138,
R. 29, Cor & Crow Wing Counties
to the SW corner of Sec 34-138-29,
which was made by me May 30-08
to June 8-1908, by direction of
J. G. Leaver - Bin Fordyce -
John Lizott Commissioners
appointed by the Judge for that
purpose. Sealed at Pine River Minn
this 8th day of June A.D. 1908.

John W. Curo. Co Survey
Corr Co Minn

This was sent to Judge C. W. Stanton
on June 22nd 1908. See file J. G. Leaver
& Judge Stanton.

(14)

June 8th of 138-29 Pine River

99

Coss & Crow Wing Counties

work Below is a copy of the bill for the

Pine River Min June 8-08
Coss & Crow Wing Counties to

John W Cuss, Esq.

Engineer work in survey of wagon
road on County line between Coss
and Crow Wing Counties through Twp
138, Range 29, May

May 30-1908 worked one day	4.00
June 1-2-3-4-5-6. Six days @ 4.	24.00
making plat of survey for Coss Co	2.00
" " Crow Wing Co	2.00
	<hr/> \$32.00

I, O.K. & Geo Robideaux line
for 6 days ~~June~~ May June 1st to June 6,
inclusive

Wm Zeahr some amount of time

R P Leggett 7. day being 12.00

May 30 to June 6. 14.00

John Leggett for 8 days I believe

John W Cuss

Further details of this survey will
be found on Page 104.

John W. Cuss

100

140-30

①

Pine River
Hackensack

June 9-08 Working for Cors Co
or Supt of Highways. to Hackensack
I left Pine River on P.M.
train & went to Hackensack to
look over road as per request
of Ed O'Donnell in his letter of
over night at Hackensack
I got in one day for Cors Co \$4.00
RR fare RR to Hack 35
4.35

June 10-08

I got Kindall & team
and drove to Ed O'Donnell's place
where we took dinner and then Ed
& I walked two miles East and found
road impossible as

Clewer &
Had not finished their job of putting
their two miles of road in "passable"
shape for \$300. tho they have previously
drawn their money from the County.

Their contract was only verbal,
made with O'Donnell who had
no right to let the job and can be
arrested. The work was to begin

@ Co to see 19-20-29-30-140-29
and run two miles west to Centre of
SW 1/4 sec 24-140-30 at O'Donnell's
house. Finally, it seems O.K. &
the work once and then said he did
not.

I paid Kindall for hiring
one day for Cors Co

2.00
4.00
6.00

over night at Hackensack

(2)
140-30

101
Hockenrock

June 11-08

Working for Cross Co. Supt of work.

I saw Mr. Clever and explained to him how he had not made his road possible or he had failed to go 10 rods east out into the Glen to the corner of lines 19-20-29-30-140-29.

This 10 rods had never been touched. I also told him he had not put in the cellars which he should have done to make his road possible.

He said he had never agreed to do any certain amount of work but that he might spend a couple of days out east just to satisfy us.

I caught the morning train to Pine River got in another day for Cross Co.

RR fare Hock to PRR

400

35

435

102

②

139-26

Crooked Lake.

June 12-08

Ed O'Donnell came down on a. m. train: we met Mr. Ezra Smith, Mr. Congdon, Mr. John L. Smith and the Cook who arrived at Pine River in P.M. We got two teams and Les Glover for driver, from Tom Nash and started in the rain for Swanburg.

O'Donnell & I take no driver but Smith pays Nash for the driver and one team.

O'Donnell got dinner in Pine River

Over night at Swanburg.

I got in one day for Carr Co	
as Supt of Highways	4.00
I paid our hall bill at Swanburg	1.90
	<hr/> 5.90

I am to pay O'Donnell's bill and charge Carr Co enough to pay it.

June 13-08

We drove from Swanburg to Mr. Smith's Club House on Sec 26-139-26 E. side Crooked Lake, and in P.M. we walked with Mamma Congdon & Smith 3 miles N & back. Over night at Club House looked @ bridge site across Crooked Lake narrow.

One day for Carr Co	4.00
---------------------	------

④

103

139-26 Crooked Lake

June 14-08 Sunday

I am working for Coss Co
O'Donnell & I left Crooked Lake &
drove to Swanton for dinner
O'Donnell paid the bill for dinner .65°
and I gave O'Donnell \$3.00 in cash
which is to pay his Hotel and R.R.
expense for the trip and I am
to charge it up to Coss Co

One day for Coss Co	4.00
Cash to O'Donnell	3.00
	<hr/> 7.00

we drove to Pine River in P.M.

Over night at home

Smith agrees to head a subscription
list with \$500.00 to help build
a road from Crooked Lake narrow
west to Blind Lake & Lake A de
and says he can get from one
thousand to \$1800. to put in with
Coss Co money.

O'Donnell & I agree to take
a list and look over the road

John W. Coss

138-29

Pine River

June 15-08

^{cross}
 Cross & Crow Wing Co. survey
 continued from Page 99. No pay
 for today's work as we have already
 put in for bill and called it some
 other date. See page 99.

Geo Rob deau - RP Leggett. Bill peaks
 took Leggett's team and drove to Co
 Sec 9-10-15-16-138-29 where we
 set the corner by measurement from
 heart of two trees on $8^{\circ}46'$ or meridian

Notes cross for:
 NP 8 N $46^{\circ}E$ 518 lks = 341.88 ft
 BP 10 N $19^{\circ}W$ 333 lks = 219.78 "
 BP 6 S $3\frac{1}{2}^{\circ}E$ 460 lks = 303.60 "

the NW line is then plainly but has
 grown 20 inches in diameter and
 it is a while P me instead of a Jack
 NE B.T. is then well marked but stands
 probably 20 feet too far N for courses
 the SW B.T. is there out is about
 16 feet too far away and as it is
 out by the roots and may have been
 pulled around I pass it up

The W.P. stands N $18^{\circ}13'W$ line distance to
 heart of tree NP 15 N $37^{\circ}18'E$, line heart
 distance to heart of tree The SE P is
 about S. $0^{\circ}15'E$ and about 16 ft too far
 away but out by the roots and we
 do not use it.

Run N $8^{\circ}46'$ on @ 689. Hub. 1320
 Hub. 1348 Hub. 1953 Hub. 2640 Hub.
 @ 2655 line $\frac{1}{4}$ post between Secs 9 & 10
 set's East - 22.30 feet. Set from
 NP 18 S $62^{\circ}E$ 422 lks = 278.52 ft Heart of
 tree on $8^{\circ}46'$ the other B.T. is as
 3. S $42^{\circ}W$ 40 lks = 26.40 ft gone.

(16)

105

138-29

Pine River

June 15-08 Continued

Going to line cor to Secs 9-10-15-16
we run S on 8'5" 00" @ 100 ft cross E & W
wagon road @ 462 Hat 699 Hat.

1015 ft Hat, @ 1320 ft South Hat.

1716 tack in stump. 2040 Hat

2400 Hat 2659 Tule 1/4 post between

Secs 15 & 16 sets West 24.50 feet

This is the 1/4 corner we set on June 3-08
See Page 90.

Correcting the West boundary of NW 1/4
Sec 10. 138-29, see Page 104.

Hat 2655 goes East 22.30 feet
1953. goes East

1320	"	"	11.15	"
689	"	"		"

Correcting West bdy of NW 1/4 15-138-29

2659 goes West 24.50 feet

2400	"	"		
2040	"	"		
1716	"	"		
1320	"	"	12.25	"
1015	"	"		"
699	"	"		"
462	"	"		"

Quit for the night over night at home

John W. Cress

106

①
138-30

June 16 1908

Pine River

Survey of wagon road on
West and South sides of sec
24-138-30 1 1/2 miles of road.

John P. Leef and his team drove to my Grover's farm and notified him to be on the ground at nine AM to start survey of wagon road near the Ben Robideau place. Then we drove to John Legatt's farm and I showed Currier about where the E & W Sec line of sec 28-138-29 cut the road and instructed him to "fix it up" but not do "too much" work on the road as it might be off a little. John Legatt insisted that the road was "absolutely" on the line and that was one reason why I did not take time to run the line.

We then drove back to Pine River where we met Grover and went out north with Henry Leef as driver.

Beginning @ 1/4 post on So side Sec 24-138-30 we found both tall stumps of Beany trees and a post formerly set by Johnnie Usher but as Usher's stake is about 15 inches too far East we put in one of our own.

At this point Got nails call for
 BP 5 N 5 1/2 W 8 lks = 5.28 feet
 BP 6 N 2' W 17. " = 11.22 "

By measuring from the heart of the trees and setting a stake at

(2)

107

138-30 Pine River

June 16-08 Continued

the intersection of the two lines, the B.T. stumps should just right for course. When it seems, measured from the outside of the B.T.S., therefore has his stake too far East-

Beg @ 1/4 between 24 & 25-138-30
we then West on $8^{\circ}46'$ Nor.

@ 603 Hub 1305 Hub 1320 Hub
1787 Hub 2640 Hub True corner to
Sec 23-24-25-26-138-30 stands
 $N 55^{\circ}50' W$ 37.50 feet

at this point four notes call
for: Bk P H. N 63 E 17. lbs

" " 4 N 44 W 24 "

" " 5 S 65 W 27 "

" " 4 S 40 E 7 "

all of the trees are there the stump of the NE tree stands but the rest are down broke off at the roots. I previously set this corner from the B.T.S. which checked out perfectly for distance no attention paid to course except in the rough. So I tied right into my old stake.

Correcting book.

2640 given N $55^{\circ}50' W$ 37.50 feet

1787 " " " " " 25.38 "

1320 " " " " " 18.75 "

603 " " " " " 8.57 "

Corrected this line. J. W. Grover - got up
I got in a whole day for Pine River
Twp. over night at home.

108

③
138-30

June 17-08

Pine River

J. P. Lief. J. W. Grover and I working
for Pine River Twp.As I have previously surveyed
the west boundary of the sub $\frac{1}{4}$ Sec
24-138-30, all we had to do was to
walk along my old line and put up
stakes marked "Good Cen" "True
Sec line".Going to the $\frac{1}{4}$ post on west
side Sec 24-138-30 we found true $\frac{1}{4}$
post previously set by me from
B.P. 7N 28 E 11. lks =Var $8^{\circ}46'$ measured from heart of tree
The other line call for in Govt notes is
B P 8 P 41 W 8. is gone.Beg @ $\frac{1}{4}$ W side 24-138-30 run N
on $6^{\circ}55'$ Var @ 450 ft Hub 819 Hub@ 850 enter marsh 875 to edge of water
little lake extends East 70 feet and
the marsh extends 20 feet further
Lake extends West 100 feet and marsh
25. ft furtherTransit set on Hub 819. I cause flag
to be placed on N bank of lake and
read stadia measurement on N
side of lake. @ 1080 leave lake@ 1100 enter solid ground @ 1280 Hub
set by stadia from 819. when rod
reads "461."@ 1320 Hub 1485 enter wet slaw
which extends 300 feet East and
500. west @ 1790 leave slaw@ 2000 ft Hub on So slope of hill by
stadia from 1320. when rod reads
"680"

(H)
138-30

109

Pine River

June 17-08 Continued

@ 2280 Hub N. brow of hill. 2640 Hub
2677 Hub line cor stands west 39.80 ft
being cor to Secs 13-14-23-24-138-30

Gout notes call for:-

BP 12 N 30 $\frac{1}{2}$ E	27 lks	=	17.82 ft
14 N 11	W 23 "	=	15.18 "
14 S 43 $\frac{1}{2}$ W	54 "	=	35.64 "
12 S 53	E 28 "	=	18.48 "

The NW, SW & SE RTS. are there and check out
well for distance & monument heart
of line $8^{\circ}46'$ The roots of NE RT.
check out and the trees there marked
but down. I drove good stake at
line corner near fence cor.

Correcting back

2677. goer	West	39.80	feet
2280 "	"	33.90	"
2000 "	"	29.73	"
1320 "	"	19.62	"
819 "	"	12.18	"
450 "	"	6.69	"

Corrected up this line.

The West boundary of the SW $\frac{1}{4}$ 24-138-30
runs on $7^{\circ}30'$ for length 2640 ft

Only for the night Grover-Laf
and I get in a whole day making
two days in all This finishes
the survey of this piece of road.

Over.

(5)
138-30

Pine River Min June 22-08

Township of Pine River

Cons Co Min

To John W. Curo, Sr.

Engineer work in survey of wagon
road between sees 23 & 24 and
along the south boundary of SW 1/4
see 24 - all in Twp 138, Rge 30

One & one half miles of work,

June 16-08 worked on survey 400

" 70-08 400

Making plat of survey (2) 200

\$10.00

This was paid June 22nd 08 in order
No 235 \$10.00 less 7% at the Bank.

John W. Curo

①
137-30

111

June 18-08

Walden

Geo Newman, Robert L. Paddock
Working. As he framing did not work
but he gets a day just the same.

Going to Co. Secs 2-3-10-11 we found
the SE and SW. Bearing lines marked
and roots of the other two. Got notes call
for Tam 7 S 66 E 45 lks = 29.70 feet
NP 18 N 33 W 60 lks = 39.60 ft gone
NP 7 S 79 W 75 " = 49.50 " still there
NP 20 N 41 E 55 " = 36.30 " gone.

measuring from SW B.T. to SE B.T. Got
notes call for 49.50 ft + 29.70 ft, Total
79.20 feet. but I find true distance
ac courses is 12.20 ft too long.

Proportional measurement gives
the SW B.T. 7.62 ft + 49.50 = 57.12 ft
The SE B.T. gets 4.58 + 29.70 = 34.28 "

Measured from heart of B.T. 5 08° 46'
Set Hub and Tack and run S 9° 00' W.

Geo Newman Chaining right to a larch
under plumb-bob.

@ 10. feet enter Tam slew. 470. leave slew

@ 848.6 Hub 1135 ft enter creek bottom

1235 Cor of 6. foot creek runs NE

1265 leave creek bottom 1320 Hub.

1726. Hub. 2300.7 Hub 2550 enter

slew. 2640 Hub Temp 1/4 in wet-B.T. 5

slew water hole. @ 2730 leave ^{gash} P. 114.
water hole, enter low land.

2840 enter meadow. @ 2940 enter

open solid meadow. 3300. leave

open meadow enter Tam swamp

Quit for the night over night at home.

Older

137-30

June 19-08

Walden

Able Framling - Geo Newman & Robert L. Paddock. Continuing transit line south from Cor. Trees 2-3-10-11-137-30. Newman still chaining close with Plumbob. @ 3417.4 Hub in Tam swamp. 3960 Hub in Tam 4000 enter open meadow. 4450 enter alder brush. 4550 enter open meadow 5180 leave meadow enter sand NW 2E @ 5280 Hub. @ 5455 True corner to Secs 10-11-14-15 sets 31.80 feet West but we do not stop to correct up but push our first transit line still further south and at 5773 enter open meadow. @ 5850. enter sand ridge 5932.5 Hub @ 5970 enter open meadow 6600 Turn $\frac{1}{16}$ port in meadow @ 7920 Turn $\frac{1}{4}$ port in meadow @ 8090.40 True $\frac{1}{4}$ port between Secs 14 & 15, sets West 51.50 feet If we continued our transit line south half a mile further, our line would split the line corner to Secs 14-15-22-23 which would be a "good shot" for a two mile run but as the $\frac{1}{4}$ port and sec corner sets west, and will pull our line out of "straight" we go back and check up. @ $\frac{1}{4}$ port between Secs 14 & 15, Lost notes call for: Tam 5044 E 31. gone. Tam 6 N 37 $\frac{1}{2}$ W 41. ltr = 27.06 feet - is there well marked and this is the line from which I previously set the line $\frac{1}{4}$ port 08'46' measured from heart of stump on line which is down.

③
137-30

113
Walden.

June 19-08 Continued

Going back to Cor Secs 10-11-14-15
137-30V, Gout water call for:

wp 14 N 69 W 27 lbs =	17.82 feet
wp 8 S 53 W 70 " "	46.20 "
" 18 S 60 E 25 " "	16.50 "
VP 17 N 57 E 47 " "	31.02 "

all these trees are there but are so badly burned figures are burned off except on the Norway which stands N.E., where the figures are dull but sure.

Dist to the N.E. B.T. is fine and checks out by measuring from heart of the but distance from the S.E. to N.W. B.T. is 4. feet too long being 34.32 goat ch. = 38.32 ft my chain. By proportionate measurement the 16.50 feet get 1.92 = 18.42. The 17.82 gets 2.08 ft = 19.90 ft. l. line.

all of these courses are good as could be expected. Measurements taken from heart of trees. There is only a root at the S.W. B.T. but distance and course is good. I was at this corner two years ago and six years ago when all of the bearing trees were standing and after I took a good look at them I remembered them and my old books show that they are the trees by a peculiar half moon notch in the S.E. B.T. and some tall dead pine squared up on four sides which were rat B.T.S. but "pounded the way" to the line B.T.S.

Quit for the night

Over night at home. One B.T. stands S 60° E 18.42, one N 61° E 31.02, one N 67° W 19.90, one gone.

114

(4)

137-30

June 20-08

Walden

Newman-Framling-Paddock worked.
 Setting transit on line corner to sec
 10-11-14-15-137-30 telescope turned
 South across meadow to $\frac{1}{4}$ corner
 between sec 14 & 15 previously set
 by me the course reads $8^{\circ}40'$

I cause a stake to be placed on line bet-
 ween these points, in meadow, marked
 "TRUE SEC LINE road cen".

Turning telescope on the old BTS. they
 stand with $\text{Var of } 8^{\circ}46'$: $N67W 19.98 \text{ ft.}$
 $S60E 18.42$. $N61^{\circ}E 31.02$

Length of West boundary of NW $\frac{1}{4}$ Sec
 14 is exactly 2635.40 feet

Correcting back along the west
 boundary Sec 11; $\text{Hut } 5455$ goes W 31.80 ft

West Hut 5280. West 30.78 feet

" " " 3960. " 23.08 "

" " " 3417.4 " 19.92 "

" " " 2640. 87.50 feet South and

15.90 ft west where we placed a good
 long well drawn post for line $\frac{1}{4}$ post bet
 ween Sec 10 & 11. but put in no B.T.S.

West Hut 2300.7. West 13.41 feet

1320. we set 43.75 feet South and 7.95

feet West, where we set the line $\frac{1}{16}$ post

near the Gunther School House and
 set BTS on fallow Dead WP NE 29.95.

feet; WP stump 24. SW 58.30 ft. to head
 of track discover in B.T.S.

At $\frac{1}{4}$ post bet Secs 10 & 11. Gout water
 call for Dead Aspen 12 N $26\frac{1}{2}^{\circ}$ E 20. Pg. III.

" " " " " 12 S 80 W 30) gone.

This water runs on $8^{\circ}45'$ var.

(5)

115

137-30 Walden

June 20-08 Continued

The Half mile along west side of SW 1/4
14-137-30. has been previously run by
me, and the distance so measured in
the rough is 2615 feet or 10' 10"

Quit for the day. this finishes the
survey of this line

June 21-08 Sunday. I staid home.

June 22nd 08. Walden Board met

and I put in my bill as follows
Pine River Min June 22-08
Twp of Walden, Conn as min
To John W. Curo, Sec.

engineer work in survey of wagon road
between sections 10 & 11. and 14 & 15

137-30.	June 18-08	worked on survey	4.00
	" 19-08	" <i>Paid</i>	4.00
	" 20-08	"	4.00
	making plat of survey		<u>2.00</u>
			14.00

allowed and paid June 22-08

\$14.00 less 7% discount which I should
have included

I finished second set of plat
of Co. & Crow Wing Co road and
sent to Judge Stanton, Page 97.

John W. Curo

June 23-08

Walden

Geo Newman - Aylo Framling, &
Robert L. Paddock Chaining. We drove out
with Paddocks team

Reg @ Cor to Deer 22-23-26-27 we found
one NW BT, and set the line corner.
Gout Vales call for Tam 4 N 32 W 5. lks = 3.30 ft -
Tam 3 N 62 E 8 lks = 5.28 ft. Tam 5 N 78 1/2 E
15. lks = 9.90 feet. Tam 6 S 38 W 4. lks = 2.64
all are gone except NW BT. post set from
cen of stump. Var 8' 46'.

Run West 8° 30'

@ 300 Hub. 550 enter slew. 575 Culvert
site water runs South into big marsh
620 ~~Hub~~ leave slew. 1057 Hub top of hill
1200 foot of hill 1320 Hub.
1350 Cen of 50 foot slew. culvert site in
draw. water runs SE. Thence up Slope
@ 1892.5 Hub on incline. 2234 Hub
on W. brow of hill. 2575 foot of hill
2640 Hub. 20 feet W of old N & S log road,
where some one has drove half a dozen
old stakes in or many different places.

Gout Vales call for

B Oak 10 S 43 E 80 lks } gone.
WP 30 N 1 1/2 E 114 "

Big WP stump stands NE but no figures
E & W wagon road lays about 100 ft N.
Continue West:

@ 3160 Cross wagon road Ber S 80 W
3188. Hub W. of road. 3475.5 Hub
10 feet N of Road. 3660 Cross road Ber
N 80 W. 3960 Hub 4526.5 Hub.

Quit for night Over night at home.

(2)

117

137-30

June 24-08

Walden.

Newman-Framling-Paddock. we drove
out with Paddock's team with lunch.

Beg @ Hub 4526.5 we continue transit
line west @ 4952 Hub. 5280 Hub

True cor 15 feet 21-22-27-28-137-30
stands N 35° 57' W 139 feet

at this point horizontals call for
Birch 8 S 31 E 41. lbs = 27.06 feet gone.

Birch 7 N 2 W 33 lbs = 21.78 feet. Hump stands
marked "BT." aspen 8 S 42 W 47. lbs =

31.02 feet gone. WP 7 N 49 E 27 lbs =
17.82 ft is there but it has turned
into a Norway and stands alone among
half a dozen 12 in white Pine trees. It is
well marked and was surely the
tree marked by foot surveys the

I find in chaining from heart
of the NW, B.T. and NE V.B.T. with stakes
set at intersection of the two lines
the Birch would stand too far East and
so both Bearing lines cannot stand
in the same section I move the

stake East till the corner to the NW & S
Sec line just clear east edge of
the Birch. the distance then to the
NE B.T. is only 17.10 ft or 0.72 feet

short which is the very best I can
do for it. August Klath lines sw.
of cor. and saw us set it. Took am.
Coffee with Mr & Mrs Klath.

Correcting back. Set 5280 N 35° 57' W
139 ft. at 4952 N 35° 57' W 130.4 feet
4526.5 N 35° 57' W 119.15 ft. 3960, 104.25.
3475.5 goes 91.50. at 2640, N 35° 57' W
69.50 feet No B.T.s on this is not true

1/4 part as we did not chain close
our

118

③

137-30

June 24-08 Continued Walden

we set 2234 N 35° 57' W 58.81 feet
 1320, 34.75 ft, 1057, 27.83 ft
 300, N 35° 57' W 7.90 feet

at each point we set a hub and a tall stake
 marked "true sec line Road Cut", but did
 not attempt to set $\frac{1}{16}$ or $\frac{1}{8}$ poles or we
 did not like time to chance it right
 to attach.

Coming back to Car Sea
 22-23-26-27 we took E out half a mile but did
 not chain the line as our chain is broken
 and as my notes call for Dead Balsom 6
 S 28 E 20 lbs, Dead Balsom 4 N 30 W 31,
 lbs the chances are they are gone. W. Luffman
 showed me two big WP trees which
 he claimed used to be marked but I
 believe he is mistaken. However I de-
 cide to quit till I can hear from Surveyor General
 office at St Paul. Paddock-Newman &
 Framling & I got in 2 days.

John W. Cress

①
138-30

119

June 25-08

Mildred

I staid home all day and in evening I sent my survey rig to Mildred by Fred and Mrs Sanborn.

June 26-08.

Fred Sanborn - Lolo Sanborn - Richards -
Dean Rice cutting brush. J S Rice & S Channing

Beg @ $\frac{1}{4}$ Port between Secs 22 & 27.
we set line Port from N.P. 14 N 20 W 57 lks =
37.62 feet. (The BLP 14 N 72 W 46 lks
is gone.) U 8° measured from cen of line
which is well marked and standing.

I would like to put my stake further
East, but cannot do so or a stake
set by Hallett sets a foot too far north
but set line with my stake and the line.

This stake of Hallett's is claimed to have
been set from both B.T.'s but even if it
was it cannot come any further north
or my B.T. for bids it.

It comes right in the center of a
lick in a hub formerly set by me to
mark Mr John Hennings's corner.

Run N 7° 45' 00". @ 1110.5 Hub
1196. Cen of track 1320 Hub 2630, Cen of wagon
road Chained fairly well but not
perfect probably within a foot of the true
distance. Continued north & chained
with Plumbob. correct.

@ 2640 Hub. @ 3704 Hub.

@ 3959 Hub. @ 5308.3 Hub True $\frac{1}{4}$ cor
Hubs East 56.15 feet.

Got notes call for, B.P. 4 N 3 W 23 lks =
= 15.18 feet B.P. 4 S 12 W 22 lks = 14.52 feet.
both these so one a little less for west. Chained
from cen of line correct. Cur.

118 120

(2)
138-30

June June 26-08. Cont'd. Mildred

we At $\frac{1}{4}$ port on E side Sec 22-188-30
 132 Goat holes call for: B P 9 S 80 W 64 lbs =
 300 42.24 ft. Only one. Stump is there
 well marked from which I set line
 mo $\frac{1}{4}$ port in marsh last winter from
 no Cen of Stump S $8^{\circ} 46'$. Port is 8 foot long
 dugged square, drove away down
 to a We placed a tall flag at this point
 and walked a mile west to $\frac{1}{4}$ port
 22- on west side of 22-
 no Goat holes call for: Y P 16 N 89 W 71 lbs
 and = 46.86 feet Y P 15 N 82 E 30 lbs = 19.80 ft
 0.2 The old $\frac{1}{4}$ port that sets on road Cen at
 this point was set by the former Co Surveyor
 Campbell from these Bearing lines
 and he established new B.T.S. to the stake
 as follows:-
 Pine Stump 24 S 50° 10' E 47.40 feet to Cen S $8^{\circ} 46'$
 " " 12 S 72° 50' W 38.25 " " " " On
 These B.T.S. have been scratched by Hallett also.

Placing flag @ $\frac{1}{4}$ port on W side 22.
 and one on E side of 22. I run a line
 E & W center line which crosses the
 N & S Cen line, at a point 2675.10 ft
 So of $\frac{1}{4}$ port on N side 22, and
 2677.50 west of $\frac{1}{4}$ port on E side,
 Out for the night.

Over night with Rice & Rice
 I did not charge Rice or Fred
 sanboon anything for today's
 work as I previously promised
 Rice to "Run it".

Wennie Gruber worked in P.M. in
 place of Richards. Rice drove to Pine River
 at noon and got my tape fixed.

(3)
138-30

121

June 27-08

Mildred

Axel Hanson - Fred Sanborn
Lolo Sanborn - Dan Rice working

Correcting N $\frac{1}{2}$ Sec line of sec 22.
@ 5308.3 True $\frac{1}{4}$ post set East 56.15 ft -
Hub 3959 goes N 11.75 ft to Hub 3970.75
Then East 4200. feet where we placed
the line $\frac{1}{16}$ post in center of N $\frac{1}{2}$ 22,
with no B.T.S. set stake
Coming back to Hub 2640 we
chained 6.80 ft to Hub 2633.2.
Then East 27.85 feet where we
placed the line center to sec 22,
BTS Vig. stump SE 34.08 ft
Stump NE 24.04 ft. Stump NW
27.47 feet to nail head in stump
Set 1320. East 13.95 ft.

3704 west " 39.18' on line
To divide the NE $\frac{1}{4}$ Sec 22-138-30
we begin @ line cen of sec and chain
East @ 1320 Hub @ 2640 Hub @
2677.5 the $\frac{1}{4}$ corner post E side 22.
Coming back to Hub 1320 we chained
East 18.75 ft set Hub 1338.75
being line $\frac{1}{16}$ post in center of East
half Sec 22. BTS, Vig.
Stump NE 15. feet Stump SW 35.17,
ft to duck head in stumps.

At cor to Secs 14-15-22-23-
138-30 got values call for
BP 7 N 48 $\frac{1}{2}$ E 19 lkr = 12.54 ft gone.
BP 8 N 57 W 35 " = 23.10 " stump there
BP 6 S 48 W 25 " = 16 $\frac{1}{2}$ ft gone.
BP 8 S 54 E 33 " = 21.78 ft there.
Distance measured flat from
cen of line from the SE B.T.
over

122

4

138-30

June 27-08 Cold

Mildred

to the NW B.T. is 0.40 ft to long, so I
divide the distance proportionately and set
Hub for corner with new B.T. as follows
It is 21.77 feet to back head I drove in
old B.T. 23.33 ft to back head
I drove in NW B.T. head of stump
20.58 feet to head of back drove in
little grain of P line SW.

Beg @ Cor to Area 14-15-22-23

138-30 Run S along road.

@ 1320 Hub 2646 Hub. True $\frac{1}{4}$ part
on E side 22, sets N $50^{\circ} 8' E$ 28.10 ft

Coming back I set 1320, N $50^{\circ} 8' E$
14.05 feet where we placed line $\frac{1}{16}$
part B.T. via Big stump
NE 12. ft Big stump SW. 33 ft
To back head in stump.

Beginning @ $\frac{1}{16}$ part set in cen of
N $\frac{1}{2}$ set 22. 138-30 we run E out
8° 30' @ 400 ft Hub top of hill
960.25 Hub. 1320 Hub
2640 Hub True $\frac{1}{16}$ sets
S $39^{\circ} 40' E$ 68.40 ft.

Correcting back

Hub 1320 gives S $39^{\circ} 40' E$ 34.20 ft
where we set line $\frac{1}{16}$ in cen of
NE $\frac{1}{4}$ run 22, B.T. as follows
JP stump NE 1.50 ft
stump SE. 14 ft to back head

Coming back to Hub 400
we set V line stake S $39^{\circ} 40' E$
10.37 ft - Out for the night

road home to Pine Run with

Andrew Linden overnight at
home.

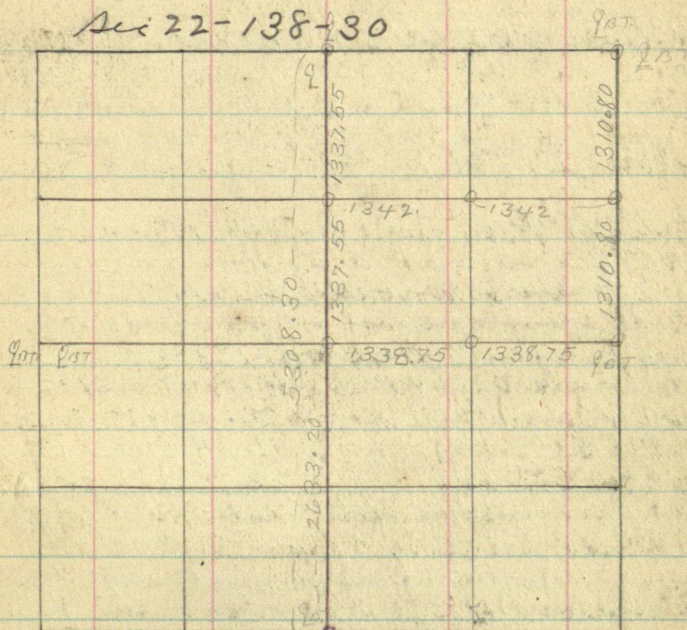
(5)
138-30

123

June 27-08

Mildred

Sec 22-138-30



124

⑥

138-30

June 28-08

Mildred

Sunday staid home.

June 29-08

Left Pine River at 6. walked
 1/2 mile to get axle Hanson of
 P.O. Box 45. Badelt Mimm and
 Lolo Sanborn and we walked to
 cor of Secs 10-11-14-15-138-30

Nalis call for: BP6 N $1/4$ E 47 lks = 31.02 ft

BP8 N $31\frac{3}{4}$ W 40 lks = 26.40 ft

BP8 S $23\frac{1}{2}$ W 24 " = 15.84 "

BP8 S 29 E 6 lks = 3.96 " , gone!

at this point we drove a hub and tack
 at line corner set from 3. Bearing
 tier, whose course checked out
 except the SW B.T. was a foot too far
 N. for course, or about 8:

By measuring from the figures
 on the B.T. The NE & SW fields are
 0.40 feet too far away so I set cor
 from measurements taken from figures
 Then drove a tack in the B.T. of the
 old front tier and took measurements
 as follows SW to tack head is
 15.92 feet. NW to tack head is
 26.37 " NE to tack head is
 31.24 ft-

we then walked to cor Secs
 2-3-10-11-138-30. Nalis call for.

BP5 N $50\frac{1}{2}$ E 87 lks = 57.42 feet

BP6 S $10\frac{1}{2}$ W 128 " = 84.48 " } 3p

" 7 S 48 E 151 " = 99.66 "

we found all three tiers,

⑦
138-30

OK.

Jahm W Ellis 125

June 29-08 Continued Mildred

with the NE one standing and stumps
of the other two green sowed off and
marked "B.T."

In chaining from the NE to SW, B.T.
from face of V B.T. spot we find the
distance 0.5 ft too long.
Corner about right on $70^{\circ}30'$

Proportional measurement NE & SW
with line measurement SE to figure
we find that the true corner is

0.15 feet SE of a sharp corner of a
rock evidently set for true corner.
The old stake set by Johann Usher
stands NE about 0.5 ft

Run south down the road;

@ 1320 Hub 2019. Hub in road south
brow of hill. 2640 Hub No B.T.S.

3960 Hub 4781.20 Hub s. brow of hill
near bend of road. 5280 Hub

True cor to Secs 10-11-14-15 sets
 $S63^{\circ}15'W$ 22.24 feet.

we set Hub 2640, $S63^{\circ}15'W$

11.12 feet where we place the true
 $\frac{1}{4}$ post between Secs 10 & 11.

B.T.S. as follows: stump 16 SW

74.95 feet. Stump East 47.25 ft
to Tack head.

Coming back to 1320 we set
true $\frac{1}{4}$ post $S63^{\circ}15'W$ 5.56 ft. gave
Sonborn two rough west right
angle lines and quit. Ed Smith
of Mildred and Dell Bundy of Bungo
helped us in P.M. Sonborn paid
me \$8.00 in full for whole 3 days work
and brought me to Pine River

Charged this day to Bungo Trap
and worked all night firing up road
contracts as "Supt Highways"

0
140-27. Inguadonna
Road Survey

June 30-08 staid home in
Pine River and wrote up my
field books. Charged the day to Com Co
on Supt Highways Bunge Tuffs.

July 1-08. Staid home and
wrote up field notes but charged
the day to Com Co on Inguadonna Road

July 2nd 08 James P Kinler and
I left Pine River at 8.30 a.m.
with Kinler's horse and we drove to
Beals creek, took dinner and then
drove to Bert Beckers place where we
staid over night

We are working for Com County
and Kinler is to charge me
\$2.⁰⁰ a day for his time but I will not
charge me anything for the horse
providing I pay Kinler's board
and buy feed for the horse

Kinler will charge a few extra days
in order to get money enough to pay me
back for what money I advance
him to pay his board.

I advanced Kinler for corn feed 1.50
supper and bed at Beckers .50
2.00

My own expense was 50^c which I paid

①

127

Inguadonna Road Survey
140-27July 3rd 08

working cross country.

Wegata lunch of Mrs Becker and
drove to Mark Snells where we took
dinner and sent a man after Geo Snell

P.M.

Mark Snell - Geo Snell - Jos Kinler & I

Beginning at corner Secs 9-10-15-16
140-27. formerly set by me from two old
bearing lines. Run Son 8°10'00"
compass line survey carefully run with
pickets through level country

@ 1000 paces true $\frac{1}{4}$ post set west 16 feet

We set the $\frac{1}{4}$ post from one white Pine
bearing line which showed SE and was down
out by the roots but marked plain

②

correcting back I paced 100 paces and
set a stake 14.40 ft west for road corner on line
line 200 paces stake west 1280 ft

300 paces stake west 1120 ft. 400 paces 9.60 ft

500 paces set stake west 8.00 ft @ 600 paces 6.40 ft

Q. list for the night

Kinler & I whole day Snell Bros $\frac{1}{2}$ day

Paid out for board for Kinler 1.25

Myself on account of lunch 1.25

2.50

Overnight with Becker where we
drove after work in evening

128

(2)

140-27

Inguadonna Road Survey

July 4-08.

Kinder Snell - Snell - & I worked all day. Beginning @ $\frac{1}{4}$ post between Secs 15 & 16 - 140-27 we run compass line south $8^{\circ}10'$ on following a line of old blazes @ 1500 ft stake (edge of wagon road in old RR grade) @ 1505 cen of road @ 2640 looked for B to look off Secs 15-16 21-22. found none. Goat naile call for:- Bass wood 8 S $68^{\circ}30'E$ 2.9 lks =
 Maple 10 S $2^{\circ}15'W$ 17. lks =
 Maple 8 N $83^{\circ}W$ 49. lks =
 Maple 10 N. $7^{\circ}40'E$ 53. lks = ft. { did not look much for them.

(at $\frac{1}{4}$ post between Secs 15-16 Goat naile call for:- Ash. 5 N $23^{\circ}30'W$ 31. lks = ft
 WPine 20. S $1^{\circ}E$ 39. lks = ft
 The WP has been cut but the stump is there plainly marked but is turned out and I cut the stake from place where "tap root" would be if stump was set up. rough compass line. Found point of old stake in little slew.)

(I discover the loss of my flat book & field naile)

Beg @ approximate corner to Secs 15-16-21-22. - 140-27 I run a compass line west, chasing fairly well over brush. $18^{\circ}10'$ @ 1355 ft set stake E edge of wagon road on old RR grade. @ 1360 cen of road.

In looking over the ground at the "end of the old grade" I find that there are two branches which would be no good for a road, one branch leads off S.E. and the other leads North east and as they do not go in the right direction I decide to pass them up and call the junction of the two crooked branches, "the end" and, in looking over the country between the end of the grade and I

(3)

129.

140-27.

Inguadonna Road Survey.

July 4-08 continued:

the $\frac{1}{4}$ port on N. side of Sec 14, I find that it would be best to run an air line between the end of the grade and a stake set 500. south of the $\frac{1}{4}$ port on N. side of 14. as the $\frac{1}{4}$ port comes in the cen of a lake.

There are a few slurs between these points but to crook around them would be more costly than to go straight.

This piece of road I can calculate instead of survey as I have survey all the sections near it on the north.

We come back and drive a stake in the end of the old grade and start our survey, run compass line dinner still @ 8:10.

S. $47^{\circ}30'W$ 810. ft - S $63^{\circ}W$ 206. ft

S $88^{\circ}30'W$ 600. " S $70^{\circ}W$ 180. "

S $50^{\circ}W$ 82. " S $43^{\circ}30'W$ 288. ft

Crossing Sec line 15.05 ft south of the $\frac{1}{4}$ port between sections 15 & 16-14-27

Thence S $43^{\circ}W$ 917. ft S $56^{\circ}30'W$ 200. ft

S $78^{\circ}30'W$ 266. " S $60^{\circ}30'W$ 150. "

S $45^{\circ}W$ 160. " S $23^{\circ}W$: @ 129. ft

cross sec line 1360 feet west of approximate corner to Secs 15-16-21-22.

@ 170. ft set stake for angle point. Thence

S $3^{\circ}30'W$ 217. ft. S $17^{\circ}E$ 1015. ft

S $2^{\circ}30'E$ 743. " S $17^{\circ}E$ 171. ft

S $25^{\circ}E$ 700. " S $5^{\circ}E$ 210. "

S $10^{\circ}W$ 270. " lake lays 100. ft south

S $23^{\circ}W$ 222. " S $29^{\circ}30'W$ 1040. ft

Quit for night - all got in full day.

Over night with Mark Snell.

Hold bills Kmler & S 82°

130

(4)

140-27.

Ingua donna Road

July 5-08 Sunday.

Geo Snell - Mark Snell - Jim Kin-
ler + I worked all day.

Beginning @ Hub 1040. in cen of
old RR. grade we continue the line SW.
 S 45° W 2185 ft - oak stake Robins old camp.
 S 79° W 340. " S 88° W. @ about 1320 ft
 enter main meadow @ 2300 leave same
 @ 2530 feet Hub. angle point. Thence
 S 72° W 311. ft S 53° W 316 ft -
 S 35° W 2781. " S 47° W 395 "
 S 59° W 1813 " S 72° W 314 "
 S 84° W 145 " N 89° W 2070. "
 S 81° W 309 " S 68° W 3083

Intersecting range line at a point
 4920 feet N of SW corner to Twp
 140-27.

We went to the SW cor of
 the twp and run a compass line N 8° 10' W
 @ 1320 stick @ 2130 feet cross old
 wagon road @ 2640 stick @ 3960 stick
 @ 4920 ft cen of old RR grade.

Quit for the night.

I paid Mark Snell 2.00 cash to
 bal account. Kinler and I walked
 to the But Becker ranch where I paid
 50¢ for our 5-30 P.M. lunch then we
 drove home to Pine River arrived
 @ 11.30 P.M. for which drive I am
 to allow Kinler one extra day.

(5)

131.

140-27.

Inguadonna.

July 6-08

I put in kinder time as follows.

July 1-2-3-4-5-6 as a and chainman
 in survey of wagon road on old R.R.
 grade thro Twp 140-R 27.

6. days @ \$2.⁰⁰ = \$12.⁰⁰

My own bill reads as follows

Engineer work in survey of wagon road
 on old R.R. grade thro Twp 140-27

July 1-2-3-4-5-6. 16⁰⁰ days @ 4.⁰⁰

\$24.⁰⁰

Plot of survey

2.00

26.⁰⁰

In writing the dedication of this
 survey I found it hard to plot all of the
 little crooks so changed the survey
 so that the road would still be inside
 the right of way and wrote it as follows:-

Reg @ Sta 1. being SW cor. Twp 140-R 27.
 Thence north along Range line 14920 ft to Cen.
 of old Cross Lake R.R. grade being Sta N: 2.
 N 68° E @ 990. ft cross sec line at a point
 4355 ft west of NE cor sec 31. @ 3223.
 ft Sta N: 3. Thence S 89° E 2196. ft to Sta 4.
 being a point on the sec line 790 ft N. of the
 SW cor sec 29. - N 77° E 550. ft Sta 15.
 N 59° E 1695. ft Sta 6. - N 40° E 542 ft Sta 7.
 N 35° E 2850. ft Sta 8. - N 62° E 488 ft Sta 9.
 N 88° E @ 800. ft cross sec line at a point
 500 ft So of the NW cor sec 28. at 2479. ft
 set Sta 10. N 82° E 490. ft Sta 11. N 45° E :-
 @ 530 ft cross sec line at a point, 2600.
 ft E. of NW cor sec 28. @ 2185 ft set Sta 12.
 Thence N 39° E 1258. ft Sta 13. - N 1° E 491. Sta 14.
 N 24° W 786. ft Sta 15. - N 4° W 323. Sta 16.

Over

140-27

Inguadoma

July 6-08

Continued

Thence $N 17^{\circ} W$ 1015. ft to sta 17. - $N 7^{\circ} E$ 255.8 ft 18.
 $N 31^{\circ} E$ 294. ft to sta 19. being a point on sec line
 1360 ft W. of NE Cor Sec 21. - $N 74^{\circ} E$ 418.8 ft 20.
 $N 46^{\circ} E$ 1112. ft to sta 21. being point on sec line 1505. ft
 South of $\frac{1}{4}$ post bet Secs 15 and 16. - $N 46^{\circ} E$ 416.
 ft to sta 22. - $N 86^{\circ} E$ 822. ft to sta 23. - $N 49^{\circ} E$ 970. ft Sta
 24. being the end of the old RR grade. Thence
 $N 67^{\circ} E$ 3696. ft Sta 25. being a point on sec line
 1650. ft South of the NW Cor Sec 14. - $N 67^{\circ} E$
 2838. ft to sta 26. intersecting the N & S center
 line of Sec 14. at a point 500 ft South of
 the $\frac{1}{4}$ post in deep blake between sections
 11. and 14 all in Twp 140 N. Rge 27. at 5 PM.

I hereby certify that the above is a correct copy
 of the survey of wagon road - running from
 the SW cor Twp 140-27. Northeastly to a point
 near the $\frac{1}{4}$ post between sections 11 and 14,
 in said town and range, which was made
 by me. June 30-08 to July 7th. 08 under your
 direction. Stated at Pine Bluff Minn
 this 10 day of July A.D. 1908
 John W. Curo, Co Surveyor.

I O.K. & Mark & Geo Snells time for

July 3 rd 08	$\frac{1}{2}$ day	100	
" 4	one "	200	work on Inguadoma
" 5	" "	200	done Road Survey
		500	

John W. Curo

①
Bungo

133

137-31.

July 6.-08

I got a team of Tom Nash and drove to the Hanley farm then to Jake Hoffmann - then walked to Burr's back to Hoffmann and then drove to PRR arriving at midnight. My wife went with me.

July 7-08.

My bill against Cass Co I will charge for as having been done today as it was midnight when I got home, lost night and am not able to work today.

July 7-08

Cass Co to John W. Curo
Trip to Bungo to meet Town Board regarding the building of a wagon road between Secs 22 & 23-137-31.
One day July 7th 08 \$4.⁰⁰

I O.K'd the Bill of Tom A. Nash as follows: - Team on road by order of Co. Sup't Highways

July 7-08, one day

\$3.⁰⁰

O.K. One day

John W. Curo

Copy

I went to Walker on P.M. train over night with Madson.

John W. Curo

134

①

Walker

July 8-08 I went from Walker
to Pine River and worked on
map of Ingusdoma road.

Pine River

July 9-08 Still working on map

Hackensack

July 10-08 Pine River to Hackensack

July 11-08. I an Father made a survey
of a few lots along the lake shore
or fallow, i:-

Beginning @ NW corner of Olney's land
I run S $25^{\circ}20'E$ $18^{\circ}30'$ at right
angle to lake shore, at 140 ft set stake
for SE cor of a block lot.

Setting transit on this stake I run
a line at right angles to my first
run, and run

N $64^{\circ}40'E$ compass in transit
carefully set @ $8^{\circ}30'$ on very hot day at
11-30 o'clock A.M.

N $64^{\circ}40'E$ across street 66 ft set
3x3x36 inch Tom stake

Then transit like a cape run S 64°
40' W 50 ft stake 100 ft stake 150 ft stake
Then measure 3, fifty foot lots in lake shore

Caught train to Cross Lake
suffer at Walker. Over night with
Hanson at Cross Lake.

John W. Curo

Coss Lake

July 12-08 Sunday,

I am staying with Geo. Hannon
and writing up my back notes

July 13th 08 Came from Coss Lake
to Pine River
I made this trip to Walker and
Coss Lake for the benefit of Coss Co.
roads. But even if I did not
accomplish much I am going to
charge them up with my day.

I sent the following bills to
the Commissioners now in session
at Walker:-

Pine River Minn
July 13-08.

Coss Co Minn

To John W. Cucco - Ldr
Services as Supt Highways
Bangs Camp.

June 29-08	Worked one day	4 00
30-08	" "	4 00
July 7-08	" "	4 00
" 13-08	" "	4 00
		<u>16 00</u>

Pine River Minn
July 13-08

Coss Co Minn

To T. A. Nash - Ldr
July 13-08 Team on road Bangs Camp
One day 3 00
O.K. one day
John W. Cucco

July 13-08 Continued

Pine River July 13-08

Cons Co Minn

To John W. Custer

Servicer as stipt of Highways on Bulah road and prospecting Crooked Lake and Backus road with O'Donnell & Smith.

June 12-08	one day	4.00
" 13-08	" "	4.00
" 14-08	" "	4.00
" 15-08	" "	4.00
		<u>16.00</u>

Pine River July 13-08

Cons Co Minn to John W. Custer

Engineer work in survey of wagon road on old R.R. grade through Twp 140-

Rge 27. July 1-2-3-4-5-6 Six days

@ 4.00 \$24.00

plat of survey 2.00

\$26.00

O.O.K. & bill as follows:

Pine River July 13-08

Cons Co to Jas R. Krieger. Lr

Servicer or as and chairman in survey of wagon road on old R.R. grade through T 140 - R. 27. as follows

July 1-2-3-4-5-6 Six days @ 2.00 \$12.00

This was signed by Mrs Krieger but not before a Notary

July 13-08.

Pine River
Co of Con state of Minn
To John W Curo, Sec
Services as Supt Highways on
Hackensack & Woman Lake road

June 9-10-11 3 days @ 4⁰⁰
" 10 Living

12⁰⁰

200

\$14⁰⁰

I got a team of Tom A Nash (The team
mentioned on Page 135. Paid) and
left Pine River at about 3³⁰ P.M.

With my wife and we drove almost to
Bungo where we met Prichard and
Hanley - Then drove back took supper @
Hanley's farm. The Bungo Town Board
met today and "Carroll" Hinch or
Clerk, but retained him or Road
inspecton.

I tried to get an order from Hanley
to go ahead and build the road men-
tioned below but the nearest he would
come to it was as follows:-

Bungo July 13-08

Mr John W Curo

County Supt Highways Conn Co

Dear Sir:- at a meeting of the Town Board
Bungo Twp it was decided to build
the half mile of road between sections
22- and 23. as soon as the \$150⁰⁰
appropriated by the County Commissioners
for that purpose has been paid into
the treasury of Bungo Twp.

The road to be built is to begin at
the 1/4 post between Secs 22-23 137-31
and run 1/2 mile north to the rd on Sec
23 and you are hereby av we will

over

Bungo

July 13-08 instruct our town Road
inspector to hire men and teams
to build said road ~~as soon as~~
within 10 days after the said 150⁰⁰ has
been paid into the said Town Treasury.

I do not like this and will not build
the road.

I have been paid for this days
work or given on page 135.

Jake Hoffman and son took
dinner at my house and then Jake
took the train to Walke where
the Commissioner will meet
tomorrow.

July 15-08

I got a team of Tom A Vash and
I and my wife drove out to Old
man Hordys in A.M. and
corrected a mile of line between Secs
21 & 22 - 138-29.

I get no pay for this day and Vash
has not been paid for his day.

P.M.

J. B. Hoffman

(5)

139

Pine River

July 14-08

Cass Co Commissioner in session at Walker.

I telephoned Hoffman that my success with the Buffalo Town Board was bad and to "Hold up" the \$150⁰⁰ formerly appropriated for certain Buffalo Roads.

I asked for road scrapers and shovels to build the Inguadona road and Spencer and O'Donnell telephoned me to buy scrapers &c at Webber and Hill's hardware.

I bought

6 shovels @ 65	390
2 Picks @ 65	130
1 Brush Hook	75
2 Pick Handles 25	50

and I ordered

2 best large summered scrapers @ 5.25	1050
---------------------------------------	------

I delivered all but the 1 scraper to Mark Snell with order to bring it back to County Supt of highways or accounted for.

It took my whole day and I ought to charge Cass Co up with the day.

140

⑥

July 15

I got a team of T & Nash and
drove to old Man Hordys. covered
up a mile of road survey bet
secs 21-22-138-29.
in a.m. No Pay

P.M. Jake Hoffman has returned
from Walke and I got another
team of Nash and took Jake
home.

Nash will have to add the two
teams into one bill and I will put
it in to next months account.

The Walden Town Board met
and allowed my bill for surveying
June 23-24 - 0.8 but secs 22 & 27
137-30. but as I made out
my bill in the road. I got the
days wrong and will change them
as soon as I see Hous. Hanson

John W. Curo

139-30

①
139-30

141

Powers. Bocher

July 16-08 Thursday

Hans Hanson gave me a
trip order for \$40 being pay for
two days work on survey of wagon
road. \$8.00 + 40% discount

Halman gave me the \$8.00 and I
paid him \$3.00 on account

I caught the train to Bocher
Mrs Thompson & Miss Alice came on
same train.

Over night at Fairview Hotel
Frank Thompson prop. Paid 75.¢
Terrible storm during the night

I have got in one day
for Powers Trip. 7.00
Talk came and got my Transit

July 17-08 Friday

I walked out to Falks farm and
we drove with Falks team to Stone
Monument formerly set by me at
the corner of Secs 8-9-16-17-139-30
and ran to 9000.

John Falk (Chairman Powers Board) } clearing
John A. Whitemore (Trustee " " }

Arthur Falk & David Gilston Armer

@ 648 Hub 964.2 Hub. 1320 Hub
Temp 116 at all Grants NW Cor. @ 1522.8 Hub
1947. Hub 2640 Hub At 2654 ft line
1/4 port sets West 9. feet.

R to C. at 4. = 1/4 port bet Secs 16 & 17.
139-30. Gout rails call for :-
BP 8860. 1/2 E 113 lks = 74.58 feet. (line standing)
NP 205 86 W 198 " = 130.68 " (stump stands)

Over

142

(2)

139-30

Power Bochner

July 17-08 Continued

Slump and two plainly marked
measurements to Head of B.T.S. in perfect
course to Jack Pine correct but W.P.
stands 2° N. or 8° 46' as Meridian
a 20 acre lake lays 200 feet East of
this point

To correct back

2654 gaes West 9 feet

1947 " " 6.60 "

1522.8 " " 5.16 "

1320 " " 4.47 " incl 6.7 ft South

964.20 " " 3.27 "

648, " " 2.20 "

Bag @ 1/4 port bet 16-17-139-30
we run South 9° or

@ 4.30 ft touch E. edge of 4 rod slew

518.3 Hub. 937.6 Hub little hill top

1320 " 2. inches E of line 1378.5 Hub

on top of big hill. Quit for the day
Falk & Son - Whittimore & Gilchrist
all got in full day.

We had Falks learn but I do not
know whether we will charge for it or not
I got dinner with Falk. Being a
lunch we ate at Al Grant's house
on SW 1/4 of NW 1/4 16.

Over night with John Falk.
we went to Bochner and I got a
telephone from my wife at Princeton

(3)
139-30
Powers - Bachus

143

July 18-08

Same crew: Beginning @ Hub

1378.5 we continue transit-line S.

Fall & Whitmore chaining roughly.

@ 1600 enter slew 1650 leave slew

1970 enter slew 2000 leave slew

2058 Hub 2640 pin. 2652 set flag

True Cor sets West 43.90 ft - (44. ft)

at this corner to see 16-17-20-21

139-30 4 out notes call for:-

NP 24 N 29 E 31. lks = 20.46 ft (stump marked)

NP 22. N 40 W 59. lks = 38.94 ft stump marked

Elm 9 N 20 W 59. " = 38.94 " stump cut off

for logging road

WP 30 S. 59 E 24. = 15.84 ft

lays on ground The NE & NW B.T.s
stumps plainly marked. SE WP has
fant figures and the SE B.T. roots
on the sound. cut off.

all courses are perfect $48^{\circ}46'$
measurements perfect to surface of
or face of figures on B.T.s.

I blazed the NE B.T. and drew a lock
distance from lock in line Cor post to
lock in stump is just 20.66 feet
Tack in NW B.T. is 39.15 feet

To correct back:-

2652. goes West 43.90 ft - (44. ft)

2058 " " 34.14 "

1378.5 " " 22.87 "

1320 " " $21.90 + 0.20 = 22.10$

and 6 ft south

937.6 goes West 15.56 ft -

518.3 " " 8.60 "

144

(4)
Powers 139-30 BackusJuly 18-08 continuedThen, beginning @ True corner
10 secs 16-17-20-21V-139-30

run so on 9' 00"

@ 267. Hub 911. Hub Quit for dinner
1320 stake 1920 Hub 2349. Hub
@ about 2560 cross wagon road E & W
2640 Hub 2655. true $\frac{1}{4}$ port
set 3 West 10. feet

At RLC at 3, being the $\frac{1}{4}$ port between
secs 20-21-139-30. Got water call for:-
NP 24 N 47 E 137. lks = 90.42 ft
NP 18 N 19 W 132 " = 87.12 "

We found both B.T. Stumps but
the NE one has been cut quite close to the
ground near the north wheel track
figures have been cut off since I
saw it - 2 years ago.

The NW B.T. has part of the B.T. still plain

Measurements and courses are
absolutely correct. Var 9° measured to
face of stump. 9' 00" is the true course
of the sec line to

Hallett has placed a tall thin rock
8 ft E and 4 ft N of my true corner

To correct back

2655	goes West	10. ft
2349	" "	8.85
1920	" "	7.23
911	" "	3.43
267	" "	1.00

run a little further and

Quit for the night
our night with Fulk.

Sunday July 19-08 All day
with Fulk. Mr & Mrs M. O. Pherson of Hood
River Ore come over for dinner

Sunday
Cont'd

(5)
139-30

145

Powers-Backus

July 19-08

About 6 P.M. Jake Hoffman
Ella Johnson and my wife
arrived from Pine River with team
of Tom a horse and we all drove back
to Pine River where I wrote out
a road petition for Hoffman
from Backus to the South line
of Bungo trap. Jake staid over night
with me and we got to bed at midnight.

Team to be charged to Coors Co
supper at home.

July 20-08

I and Hoffman got a team of
Tom a horse and my wife and Gladys
Mouleslin took me back to John Falk's
place at Backus. arrived at 11.0 AM
too late to work as it began to rain and
they did not get started back for Pine
River till 2 P.M. all took dinner with
Falk.

Ells & Harold come along
P.M. worked

Whittemore-Falk. Gitsliorn worked.
(Arthur Falk dragged the wood)

Reg @ line report bet Decs 20-21
139-30 we run S 9° E on @ 661 Hrb. 2390 ft.
1320 Hrb 1820 Hrb ^{2390 ft} 2640 Hrb @ 2644
line on sets west 4 feet at Cor to ker

20-21-28-29 Gout volis call for
BP 8 N 84 E 425. Chr = 280.50 ft. stands

BP 7 N 35 W 170. " = 112.20 " gone.

BP 8 O 84 E 418 " = 275.88 " slump chert

NP 15 S 3. W 324 " = 213.84 " down.

Quit for night over night with Falk

146

Powers

139-30

Backus.

July 21-08

Carl Falk - John Falk
David Gildsion. Gowhittmore

worked all day. Going to Corner Secs
20-21-28-29- 139-30 we found all of
the bearing lines except the N.W. one
but the S.E. B.T. stands 35.62 feet to
far East and three or four rods to far S.
for the N.E. B.T. The S.W. Norway stands 10 or 15
feet to far west for the N.E. B.T. but the
courses and measurements from the
N.E. and S.W. B.T. would put the corner in
very well if it wasn't for the S.E. one
pulling them so fearfully out of line

I establish the true corner as follows
Run a line from the S.E. B.T. Northwesterly,
and from the S.W. B.T. Northeastly, inter-
secting the two lines at the measure-
ments called for in the Govt notes, Hub A.

Then I do the same thing with the
N.E. and S.W. B.T. -- Run a line N.E. and
S.W. intersecting the S.W. and N.E. B.T.S.
at a point where the two Govt measurements
intersect. Set Hub "B". Distance bet
Hub "A" & Hub "B" is 42.80 ft. Then I set the
true corner exactly, or almost exactly
half way between Hub "A" and Hub "B"
except that the true corner is still
the true Govt measurement from the
15. inch Norway B.T. standing S.W.,
and the distances between Hub "A" and "B" is
proportional instead of equal.

By proportional measure the 280.50 ft
to the N.E. B.T. is 21.58 ft short leaving
the distance 258.92 ft

The 275.88 ft to the S.E. B.T. is long 21.22 ft
leaving true distance 297.10 ft

Left to S.W. B.T. is left at Govt chain
being 213.84 ft all to face of line

⑦

Powers 13930 Bocher 147

July 21-08 Continued

With transit on line corner
Secs 20-21-28-29-139-30 The old
Gout B.T. S stand as follows $\text{Venus} @ 8^{\circ} 46'$

GP 8 N 82° 24' E 280.50 - 21.58 = 258.92 ft

" 8 N 75° 42' E 275.88 + 21.22 = 297.10 "

NP 15.811° 35' W 213.84 ft all to face of B.T. blz.

At this point I establish New bearings
as follows sent to lock head down in
slump NE 43.40 ft. A cross in N. side
7 big rock west, is 18.40 ft

Correcting $\frac{1}{2}$ Secs 20 and 21.

2644 goes west 4 ft

1820 " ²³⁹⁶ " 3.62

1320 " " 2.00

661 " " 1.00

By at 20-21-28-29-139-30 we chain
South 8° 00' on line line previously found
by setting W.C. South and placing transit
line through @ 950 ft in west edge of slew
thence along edge @ 1150 enter solid
ground 1240 beaver dam. enter wet
slew 1320 stake in slew (Mr Whittemore
lost his watch in the water and we all
work off our shoes and I found the water
with 1 foot) 1680 leave slew

1820 Hat for first road angle @ 1825 Hat
@ 1858 intersect N bank of lake.

We set the Witness on bet-
ween 28 and 29-139-30 from both
Gout B.T. & which check out for course
and measurement 88° face of sec.

Gout vol. say "Wit-co South
276 lbs. = (182.16 ft) BP 6 N 88½° E 15. lbs =
9.90 ft. BP 7 S 20½° W 104 lbs = 68.64 ft
Over night with Fulk.

148

⑧

Becker 139-30 Powers

July 22-08 To get the distance
across the lake bet Sec 28 and
29 139-30 I set transit on hub
1825 So of cor to Sec 20-21-28-29
and run Right angle East 177 ft
Then S. $657.2 + 1825 = 2482.2$. ^{Hub} Then
157.8 ft @ 2640 Hub Temp E & W cen.
line Sec 28.

Then South 276 lks = 182.16 ft Hub
Then 7.80 ft south to a point 177 ft East
of art cor previously set. The total
distance of 2822.16 foot chain from cor
to Sec 20-21-28-29-139-30 in County road,
south to witness corner on So side of lake,
is 7.80 ft long or 2829.96

correcting back

Hub 2640 goes S 739. rough E & W cen line
1320 we set south 3.65 ft then run a
rough compass line with the transit,
E but on $8^{\circ}40'00''$ just to mark the
line between Gelshorn & Falk.

The chaining was done by Falk and
Whittemore and is probably not correct.

To run the road line around
the lake with center line 33 ft from sea
wall or water edge we begin at Hub
- 1820 So of Sec 20-21-28-29-139-30

Thence South $51^{\circ}40'E$ 207 ft
S $5^{\circ}35'E$ 360. ft.
S $3^{\circ}W$ 270 "
S $22^{\circ}40'W$ 180 "
S $43^{\circ}10'W$ 167.3 ft to a point on
the sec line 35 ft south of witness
corner.

⑨

Bocher 139-30 power 149

July 22-08 Continued

Going to Secs 28-29-32-33-
139-30 Gout nalis call for

BP 8 N 67 E 43. lks = 28.38 ft

BP 4 N 25 1/2 W 29 " = 19.14 "

BP 10 S 78 E 31 " = 20.46.

all are there and standing and the NE
and NW BT. S check out beautiful from
face of hill. The SE, BT. pushes the lock
one inch too far west so I divide the
distance (2 inch) and divide the lock
for True course to the Beany lies
ore N 68° 30' E

N 24° 45' W

S 76° 50' E

on 8° 46' or medium

Setting transit on the true corner
just of set, we are 10 ft East of Pair
bottom run N 8° for

@ 50 ft touch edge of river bottom

110 touch solid land 150 edge of river bottom

200. enter river bottom 20. ft East of

main river. 415 to bank of river

450 N. bank of river. Run East

Quit for night

Edwin and John Falk - Whittemore
Gilshorn & I got in a whole day
Our night with Falk.

150

(10)

Powers 139-30 Backus

July 23-08

Continuing N from Cor to Sec

28-29-32-33-139-30

Arthur & Edwin Falk - Lillström
& Whittemore: @ 750 Leavenworth bottom1320 Hat in field Temp $\frac{1}{16}$

1590 Hat " "

2310 Hat

2457.84 Hat Temp Wt - corner

True wt - Cor stands N $33^{\circ}5'W$ 21.60 ft

making total distance 18.4 to long

or 2476. feet about

Measured by Whittemore and Falk and
not absolutely correct for distance
but absolutely correct for course.

Correcting back:-

Hut 2457.84 goes N $33^{\circ}5'W$ 21.60 ftHut 2310 went N $33^{\circ}05'W$ 20.31 ft" 1590 " " " $33^{\circ}5'W$ 13.97" 1320 " " N $33^{\circ}5'W$ 11.60 ftwhere we placed the true $\frac{1}{16}$ cornerThen to find a road on the west side
of the creek we begin at a point on the
Sec line 839 feet North of the corner to
Secs 28-29-32-33-139-30We run S $26^{\circ}35'W$ # 900 ft. stop
quit for the night.Arthur & Edl. Falk, Whittemore &
Lillström got in a whole dayMr Shearer & family arrived
from N.Y. & Mr & Mrs Falk spent all
day hauling them out to Sonborn &
over night with Falk.

Backus

(11)
139-30

151
Powers

July 24-08

John Falk - Carl Falk - Whittamore
and Gilstrom & I worked all day

Arthur Falk - John Falk and I drove
to Backus and got 8 Stone Monuments
and brought them out to Falker

We found the old wood hub buried
38 ft South of S.E. Cor of EA Townsands
fence where we placed a white back
shot. Then set it as it is at a Hub
west of the New $\frac{1}{4}$ post set by me on N
side sec 32-139-30 and run a line East
through said $\frac{1}{4}$ post and at the end of
our run, split the center of the New Hub
set by me at the corner of sec 28-29-
32-33-139-30 This shows that our
 $\frac{1}{4}$ post is correct. We did not meas-
ure the distance or I measured it
2 years ago and know it is right.

Going back to our Hub set for
road cen at a point on sec line at a
point 839 feet North of Corner to sec
28-29-32-33-139-30. We continue our road
line which we run yesterday S $26^{\circ}35'$ W
and at 939.2 feet we intersect the true
sec line at a point 434. feet west
of corner to sec 28-29-32-33-139-30

Then going to the $\frac{1}{4}$ post bet-
secs 28-29-139-30 (see page 147)
we set an 8x8x36 inch concrete ^{stone} with
a cross on the top and marked USW.C.
This stone is very carefully set with
center of cross as true corner.

Over night with Falk.
Quit for the night.

152

⑫
139-30Backus
Powers

July 25-1908

David Gilstrom - Jack Hittmore - John Falk and his team set stones till noon and the Board of Powers Twp. met in P.M. and paid off the survey crew for what work they have done to date.

Falk distributed the stone and we set 8x8x36 inch concrete stones at the following places: $\frac{1}{4}$ post bet. 16 & 17-139-30 both B.T.S. there. See page

Corner to Secs 16-17-20-21-139-30

all being lines there. See Page

The $\frac{1}{4}$ between Secs 20 & 21. See Page both B.T.S. there.

We corrected up the line as given on pages 144, 143, and 142.

Quit for dinner P.M.

We all went to the Town Board meeting and I put in the following bill which was paid right there
Backus July 25-08
Powers Twp. to John W. Currier.

Engineer work in survey of wagon roads in Twp 139-Rge 30 as follows
July 16-17-18-20-21-22-23-24-25

1908 worked 9 days @ \$4.

Encount on Twp order

36.00
4.00
\$40.00

This was paid @ 10¢ per day and I got just \$36. from Backus Book for the warrant.

I paid Mr. Falk \$5.00 on acct. owed. Then Arthur took me to Pine River where I staid over Sunday.

Sunday July 26-08 at home.

(13)

153

Bochar

189-30 powers

July 27-08 Monday

Arthur Falk and I got back from Pine River to Falks place at 9 A.M. and we worked.

Arthur Falk - J. A. Whittemore and I worked in A.M.

We set $8 \times 8 \times 36$ inch concrete port at the corner of sec 20-21-28-29 139-30 from 3. old B.T.S. and 2. new ones see page

We also set $8 \times 8 \times 36$ inch cement stone @ $\frac{1}{4}$ port between sec 29-32-139-30 from old $\frac{1}{4}$ corner which I established two years ago P.M.

Just Whittemore & I worked in P.M.

except that John Falk took his team and distributed corner ports in afternoon.

Whittemore & I set $8 \times 8 \times 36$ inch cement stone @ $\frac{1}{4}$ port between sec 29-32-139-30 from old $\frac{1}{4}$ corner which I established two years ago P.M.

We then went to Bochar and worked all afternoon digging up bearings to cor. of sec 29-30-31-32. 139-30 but did not set any ports.

Quit for night overnight with Falk.

154

(14)

Barker

139-30

Power

July 28-08

John Falk & Team & Whittenmore
and his driver took two 8x8x36 inch
cement stone and set one at
Gout M.C. N^o 63. ON East side of Pine
Mountain Lake. So boundary Twp 139-30

At this point Gout notes call for:
Ask 6 S 36 1/2 E 92. B. of Giliard 1/4,
N 22 3/4 E 100. lkr.

Both BTs this but almost gone
B.B. Bailett and J.W. Bailey have established
a 4x4 ood post at this point which
is correctly located. Measurements
correct from face of BT. U 8'46'

The SE BT has been cut off and Bailey
has driven 3. 60 ± spikes in the stump
so as to identify it. Monked stone U.S.M.C.

Going to the SW corner of
Sec 32, and SE corner Sec 31.
139-30 we set the other 8x8x36
inch cement post marked "Sec 31"

At this point Gout notes call
for. NP 105 G 1 E 48 lkr =

Oak 8 N 51 W 54 lkr =

BP 105 S W 89 lkr =

BP 7 N 64 E 115 lkr =

This point was previously
established by me

all took dinner at Falk's
P.M.

Whittenmore & I set 8x8x36 in stone
post @ cor to Sec 28-29-32-33-139-30
from all 3. Gout lines
Monked the rest of the P.M. in Barker
over night with Falk.

(15)

155

Backus 189-30

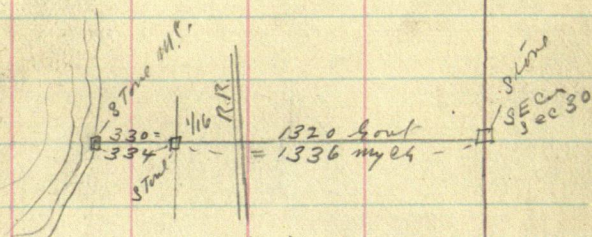
Power

July 29-08

Arthur Falk and I worked all day in Backus. We took dinner with Frank Thompson and I paid 50¢ for it. Before leaving Falks I paid Mrs Falk 3⁰⁰ more making 88⁰⁰ in all to pay my board in full.

At the stone M.P. near Gaus' big hallet, course of the E & W line is 7° 46'

One B.T. stands S 76° 8' E 125.70 ft
 Above lock in stump N 76° 12' E
 28. feet



From the 1/16 point set at the NE corner of Koops land, East to the sec corner, the distance is 16. feet 10 in long, and from the same point west to the M.P. is 4. feet over length 1336 and 334

John A. Curo

156

Powers Twp (1)

Backus 139-30
Oct 5-10LV Hook @ 10.10 AM. at Backus 10.22
Dinner with Ed. O. Tyrell

PM.

Ed Tyrell, John Falk, axmen Curo Chairman
 going to Cor Secs 21-22-27-28-139-30 about
 Nalis cut for NP6 N18E37 LKs = 24.42 ft
 BP9 N76 1/2 W 18. LKs = 11.88 ft BP78 54
 W28 LKs = 18.48 ft Asp 10 S53 1/4 E39 LKs
 = 22.44 feet We find the stump of the
 NEBT plainly marked from which we set
 a Hub for the line on by flat measure
 from face of BT. 9.00

all the other lines being gone

We establish New BT. 15

Seed Slump N40°59' W 27.90 feet } over
 " " N30°50' E 41.76 " } 9'
 " " S27°4' E 52.23 "

Curo and Falk go to catch the 3.55 PM
 train at Backus and Tyrell + I run
 line north but do not chain. Double
 Centre Hubs.

Quit for night over night with Tyrell
 Curo, Falk, Tyrell, got in fuel day @ \$2.00
 I get in fuel day for Powers Twp \$4.00

Harry Todd

Thursday Oct 6-10

A Falk, Tyrell and I continue line North. Dinner
with Tyrell. Curo comes back fromHackensack on AM train and takes dinner
with John Falk.

PM.

Tyrell does not work in PM. John and
 Arthur Falk axmen. Curo + I Chairman
 We chain the line just cut

Reg @ Cor to Secs 21-22-27-28-139-30
 We chain North 8°30' over

@ 76 ft Hub 200 pin 225 cut meadow, which
 extends 75 ft East. @ 375 LV meadow 400.

Pin 545.60 Hub 600 pin, 800; 1000, pin
 1033.50 Hub 1087.70 Hub 1200 pin 1400 pin
 1513.15 Hub 1600. pin 1733.50 Hub 1800 pin
 1900 Hubs. 2000 " 2003.10 Hub 2200 "

road E + W. 2204. SE Cor Pigeon 2375 open
 meadow 2400 pin 20 feet E of solid ground
 2500 solid ground 20 " west 2600 pin
 2638. Hallett's portraits about 1 foot and 1/2

2640. Stake in meadow.

At $\frac{1}{4}$ bet Secs 21 and 22-139-30 Goat
Vales call for "Q 15 at 3."

SP8N53E 168 Lks - - gone.

Continue North @ 2800 pin 2825 to meadow
road bears NW & SE @ 3000 pin 3050 cross
wire fence 31 cross fence 3174.70 Hub
34.20 feet West of NW cor of New House
3200 pin 3238.25 Hub 3350 enter Lake
bears N 80 E and S 80 W.

From Hub N 3174.70 Ws cause a Hub to be
set on North side of SE arm of House
Shoe Lake and go over in a boat and
Continue Transit line North to a point

6.30 feet East of NE cor 21-139-30 where
Goat Vales call for 15-16-21-22-139-30

N 12 N 37 E 49 Lks = 32.34 ft

" 10 N 57 W 28 " = 18.48 "

" 12 S 44 W 42 " = 27.72

" 12 S 51 E 43 " = 28.98

We find all the bearing tree stumps
the NW and SW being plainly marked
Distance from SW to NE B.T. is 0.40 ft

Long and from SE to NW B.T. is 0.40 feet
Long - - Vrs courses. We set a Hub and

Tack for true corner by flat proportional
measurement from a tack driven in the
face of the old B.T. stumps after which
they stand perfect for course @ 80° 30' 00"
but are call 0.20 feet too far away
for Goat measur.

Bag at a stake marked "00." 6.30
feet East of our true corner we chain
back along our cut out line @ 174.60 S. 17th

@ 200 pin, 295 enter open swp 400 pin
in swp 500 enter E. edge of swp and follow
it 600 pin E. edge swp 630 to swp
800 stake 989.80 Hub 1000 stake 1150 Hub
8 feet N of sea wall and 15 feet N of low
water edge Quit for night Oarnight
with Tyrell.

Tyrell $\frac{1}{2}$ day 1M.

Arthur Falk 1 day

John Falk 1 "

Curo 1 "

100

200

200

200

Harry Todd

158 Powers Trip (3) Friday Oct 7-10

Boekes
189-30

Arthur Falk Axman. Curo & I. Ch.
To find the distance across the S E arm
of Horse Shoe Lake in order to find the length of
the West boundary of Sec 22-139-30
With transit set of Hub N^o 989.80 S. of W. on
the turn an angle, and run S. 66° E
@ 200 pin 300 enter N. edge of lake 311. pin in
water edge 311 + 173 = 484. pin in lake
in water 580 L.V. water 684 pin in meadow
801.10 Hub L.V. meadow 884. pin 934.70
Hub on hill 1084. pin 1123.40 Hub at
intersection of a line run N 60° E from
a Hub set 3174.70 ft N of SW Cor 22-139-30

From Hub N^o 3174.70 W. cut a line
N 60° E to the intersection of the line
above described but I am do not
chain it. At IP Hub N^o 1123.40 W.
take the angle of the two lines as a "check"
Vernier reads 60°

This shows the distance across the lake
bet Hub N^o 3174.70 N. and 989.80 S. is
be 1123.40 feet and the total length of
the mile is 3174.70 + 1123.40 + 989.80
= 5287.90 being 7.90 feet over length.

5287.90 N
= 00. 7.90
- 5280 N = 7.90 S

989.80 S
= 92.98-10 N
1123.40
3174.70
2640 N

Just across water
is about 780. feet

Correcting a part of the
line.

Hub 5287.90 goes N 7.90
to Hub 5287.90 then W 6.30
Hub 3342.90 goes N 5.14
3347.90 then W 3.98 feet

Where we place MC N^o 41. 2x2x30
dry pine sticks staked around.
being true MC, where Gout holes call
for BR 9824 W 27 LHS = 17.82 feet
We find the old BT in place but it
is almost gone.

Stone □

3174.70
goes W 3.78 where we drive a hub
(marked "Tunnel") 2640 goes
N 3.95 to Hub 2643.95 then west
3.15 where we drive a 2x4x28
in pin 1/4 post well into the
meadow

(4)
continued

159

We do not have time to finish the corrections of the whale line, so leave Arthur Falk and John Falk to place the true Cement corner near the school house at 21-22-27-28.
139-30 Falk drives us to the station at Backus + we go N to Hock on 3.55 P.M. train
Arthur Falk, John Falk, Curo + I get in full day for Powers. Over night at Hock.

The following corrections will have to be made in the line bet 21 and 22 139-30.

Hab 76	N goes West	0.09
" 545.60 N "	West	0.65
1033.50 "	" "	1.23
1087.70 "	" "	1.30
1513.15 "	" "	1.80
1733.50 "	" "	2.06
2003.10 "	" "	2.39

Hock Min. Saturday Oct 8 1910
I sent the above list of 7. Habr to Arthur Falk with instructions to set correction stakes over the required distances as per above schedule.

Sent following bills
Harry J. Todd Eng Work Oct 5-6-7 1910
3 days @ 4⁰⁰ & 12⁰⁰ RR fare Walter to Backus and return @ 45⁰⁰ = 90⁰⁰
Total 12.90

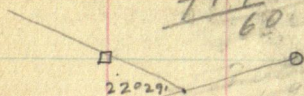
John W Curo assistant Eng in survey of wagon roads Oct 6 1910.
Salary \$4⁰⁰ RR fare + food exp 1⁰⁰ 5⁰⁰

John W Curo

1307.1
 160
 S. 34° 02' W
 S. 20° 36' W
 6.7 to Cen. Sec.
 1684.0
 1357.3 1/16 I.M.

100.0
 64.3
 35.7
 13026
 33 18
 19 47
 13029
 4.2 = 1° 22'

1500
 1428
 720
 714
 60



N. 71° 29' W 29.6'
 22° 29'
 93° 58'
 586° 02' W. 264.4
 5.88° 15' W. 293.2

N. 13° 04' E
 30
 N. 13° 03' E
 5.88° 43' W.

52.5 / 100

20

104
 60
 40

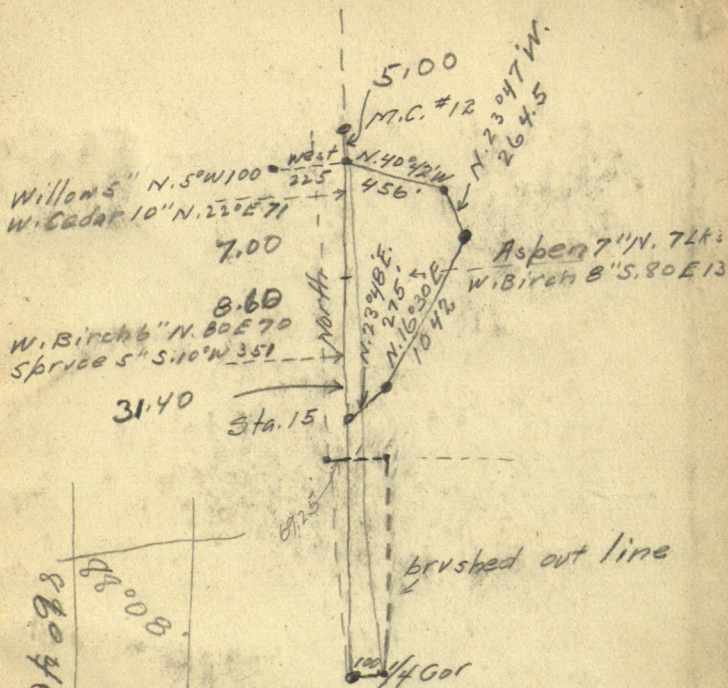
84

100.00
 81.61
 18.4

3432 : 1500 :: X : 35.7

357
 24024
 17160
 10296
 1224224

81.61
 15 122422
 120
 24
 15
 92
 90
 22



Sta 088

28008

1308.2

100
141.8

1317.3

09

425

22.4

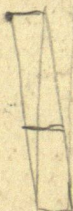
3960
200

4660
462235
37.5

488210
4822.5
66

52 $\overline{) 16.9}$
156
1304
104
260
260

3.25
 $\overline{) 6500}$



66 $\overline{) 5.15}$
528

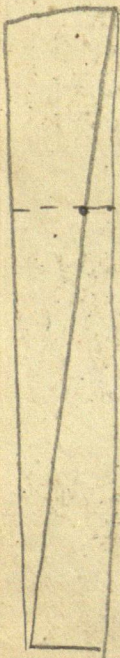
16

$$\begin{array}{r}
 1.92 \\
 \hline
 386 \\
 \hline
 574 \\
 \hline
 2610 \\
 \hline
 88.04
 \end{array}$$

584

$$\begin{array}{r}
 1.92 \\
 \hline
 52702 \\
 \hline
 480 \\
 \hline
 468 \\
 \hline
 120
 \end{array}$$

2660

$$\begin{array}{r}
 1.33 \\
 \hline
 52569 \\
 \hline
 32 \\
 \hline
 170 \\
 \hline
 1560 \\
 \hline
 140
 \end{array}$$


$$\begin{array}{r}
 364 \\
 \hline
 106 \\
 \hline
 1
 \end{array}$$