

94

MINING
TRANSIT BOOK
363

KEUFFEL & ESSER CO.

DRAWING MATERIALS

AND

SURVEYING INSTRUMENTS.

NEW YORK.

CHICAGO.

SAN FRANCISCO.

ST. LOUIS.

TABLES FOR EXCAVATIONS AND EMBANKMENTS.

DISTANCES FROM CENTER OF ROADWAY FOR CROSS-SECTIONING.

ROADWAY 18 FEET WIDE. SIDE SLOPES 1 TO 1.

FOR SINGLE TRACK EXCAVATION.

"Copyright, 1895, by Keuffel & Esser Co."

	0	.1	.2	.3	.4	.5	.6	.7	.8	.9	
0	9.0	9.1	9.2	9.3	9.4	9.5	9.6	9.7	9.8	9.9	0
1	10.0	10.1	10.2	10.3	10.4	10.5	10.6	10.7	10.8	10.9	1
2	11.0	11.1	11.2	11.3	11.4	11.5	11.6	11.7	11.8	11.9	2
3	12.0	12.1	12.2	12.3	12.4	12.5	12.6	12.7	12.8	12.9	3
4	13.0	13.1	13.2	13.3	13.4	13.5	13.6	13.7	13.8	13.9	4
5	14.0	14.1	14.2	14.3	14.4	14.5	14.6	14.7	14.8	14.9	5
6	15.0	15.1	15.2	15.3	15.4	15.5	15.6	15.7	15.8	15.9	6
7	16.0	16.1	16.2	16.3	16.4	16.5	16.6	16.7	16.8	16.9	7
8	17.0	17.1	17.2	17.3	17.4	17.5	17.6	17.7	17.8	17.9	8
9	18.0	18.1	18.2	18.3	18.4	18.5	18.6	18.7	18.8	18.9	9
10	19.0	19.1	19.2	19.3	19.4	19.5	19.6	19.7	19.8	19.9	10
11	20.0	20.1	20.2	20.3	20.4	20.5	20.6	20.7	20.8	20.9	11
12	21.0	21.1	21.2	21.3	21.4	21.5	21.6	21.7	21.8	21.9	12
13	22.0	22.1	22.2	22.3	22.4	22.5	22.6	22.7	22.8	22.9	13
14	23.0	23.1	23.2	23.3	23.4	23.5	23.6	23.7	23.8	23.9	14
15	24.0	24.1	24.2	24.3	24.4	24.5	24.6	24.7	24.8	24.9	15
16	25.0	25.1	25.2	25.3	25.4	25.5	25.6	25.7	25.8	25.9	16
17	26.0	26.1	26.2	26.3	26.4	26.5	26.6	26.7	26.8	26.9	17
18	27.0	27.1	27.2	27.3	27.4	27.5	27.6	27.7	27.8	27.9	18
19	28.0	28.1	28.2	28.3	28.4	28.5	28.6	28.7	28.8	28.9	19
20	29.0	29.1	29.2	29.3	29.4	29.5	29.6	29.7	29.8	29.9	20
21	30.0	30.1	30.2	30.3	30.4	30.5	30.6	30.7	30.8	30.9	21
22	31.0	31.1	31.2	31.3	31.4	31.5	31.6	31.7	31.8	31.9	22
23	32.0	32.1	32.2	32.3	32.4	32.5	32.6	32.7	32.8	32.9	23
24	33.0	33.1	33.2	33.3	33.4	33.5	33.6	33.7	33.8	33.9	24
25	34.0	34.1	34.2	34.3	34.4	34.5	34.6	34.7	34.8	34.9	25
26	35.0	35.1	35.2	35.3	35.4	35.5	35.6	35.7	35.8	35.9	26
27	36.0	36.1	36.2	36.3	36.4	36.5	36.6	36.7	36.8	36.9	27
28	37.0	37.1	37.2	37.3	37.4	37.5	37.6	37.7	37.8	37.9	28
29	38.0	38.1	38.2	38.3	38.4	38.5	38.6	38.7	38.8	38.9	29
30	39.0	39.1	39.2	39.3	39.4	39.5	39.6	39.7	39.8	39.9	30
31	40.0	40.1	40.2	40.3	40.4	40.5	40.6	40.7	40.8	40.9	31
32	41.0	41.1	41.2	41.3	41.4	41.5	41.6	41.7	41.8	41.9	32
33	42.0	42.1	42.2	42.3	42.4	42.5	42.6	42.7	42.8	42.9	33
34	43.0	43.1	43.2	43.3	43.4	43.5	43.6	43.7	43.8	43.9	34
35	44.0	44.1	44.2	44.3	44.4	44.5	44.6	44.7	44.8	44.9	35
36	45.0	45.1	45.2	45.3	45.4	45.5	45.6	45.7	45.8	45.9	36

Calculated by Julien A. Hall, M. Am. Soc. C. E.

18	
24	
42	
<hr/>	
84	
12	1000
96	
16.00	
<hr/>	
112.00	

James W. Curo
 Sept 1-1917

Index.

From pgs To pgs.

Wahneena Twp	1 - 53
Private Work	54 - 64
Peter Moe	
Cass Lake	65 - 71
Cass County	72 - 83
Timothy Twp.	84 - 121
Home Brook	122 - 144.

Frank G. Donner

Homebrook - 135-30
Hartman Road

147-158

1 Wahneema Twp. D Cohasset

Sept. 12, 1914 Working for Wahneema

I leave Sanatorium on 4.45 train for Cohasset. I pick up survey outfit at Walker. I get to Benidji about 6.30 P. M. Get room and have supper at Markham Hotel.

Sept. 13, Cont. for Wahneema.

I leave Benidji @ 2.30 A. M. on S. N. for Cohasset. Arrive @ Cohasset @ 4.30 P. M. I get room @ Hotel and stay there all day Sunday. It rained all day so Jim Ross did not come in after me as was planned

Record No. 485-

J. A. Donner

Wahnena Twp
143-25.

(2) Cohasset

2

Sept. 14, 1914. Cont for Wahnena.

All day at Hotel in Cohasset.
At 9 P.M. Geo. Boileau
comes in to get me but
we decide to stay in
town over night and start
early the next morning.

Sept. 15, 1914. Cont for Wahnena.

A.M.
I have breakfast @ Hotel
and then Geo. Boileau and I
start out for his place. We
get there just @ noon.

I have dinner with Boileau.
P.M.

We drive over to town clerk
and get the four road
petitions and what few
field notes he has.

We get Louis Kirt and start
for Mel Loane's place. We
have supper with Loane
and stay over night.

J. F. Donner.

3

Wahneena Twp
Cohasset $\frac{141-25}{144-25}$ Sept. 16, 1914 Working for Wahneena.
A.M.Geo. Boileau, Louis Kirt,
Nels Loane, B.H. Griethbrock and
I walk to Sec. corner of Secs.
29, 30, 31, 32 - 144-25. Where H.S.
notes call forCedar 8 S 35° E 3 = 1.98 ft." 6 N 65° W 14 = 9.24 ft." 6 S 54° W 32 = 27.78 ft.Lind 6 N 29° E 27 = 17.82 ft.I set over corner and take
following bearings from old B.T.S.Cedar 14 N. 37° W. 11.9 ft.Spruce 8 S 70° W. 26 ft.var. 8° Using small Gurley
compass and ^{100 ft} Chicago steel
tape.I run due west on 8 in.
@ 5' leave swamp.We loose about $\frac{1}{2}$ hour
on account of rain.

Quit for dinner @ Loane.

J. A. Hanner

104091

4

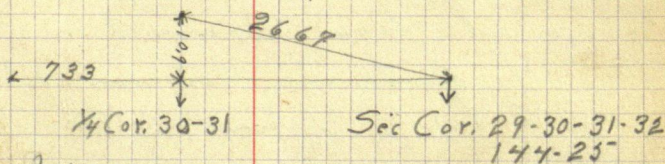
Sept. 16, 1914 Cont. for Wahneena.
P. M.

We continue West? See plot
@ 26+67 I intersect random
line 10.9 ft south from true $\frac{1}{4}$
corner of Secs. 30-31-144-25.
to which old Bass tree bears.
S 14° E 21.6 ft. Old B.T.

Var. 8°

Hub @ 26 goes north 10.6 ft.
I set over true $\frac{1}{4}$ corner
bet. 31-30 and using the corrected
Hub @ 26 for back sight we
continue West on true line
and set road center with Hub.

@ 7+33 from $\frac{1}{4}$ corner bet.
30-31-144-25 we set last
road center with Hub.



Using small Gurley
compass and 100 ft. steel tape.
J. A. Danner

Sept. 16, 1914 Cont. for Wahnena.
P.M.

Correcting back from $\frac{1}{4}$ corner
between Secs. 30-31-144-25²

Hut @ 23 goes north 9.40 ft.

" " 20 " " 8.18 "

" " 17 " " 6.95 "

" " 13+33 " " 5.44 "

" " 10 " " 4.09 "

" " 7 " " 2.86 "

" " 4 " " 1.63 "

Quit for night @ Loams.

Donner compassman

" & Kirt chainmen.

Sept. 17, 1914 Cont. for Wahnena.
A.M.

Geo. Boileau, Louis Kirt and I
start from Loams @ 7.30 A.M.

We drive to Boileau's place.

I have dinner @ Boileau's.

J. A. Donner

Sept. 12, 1914. Cont for Wahnena.
P. M.

Arthur Claseau joins us
We drive with Boileau's team
to $\frac{1}{4}$ corner bet. 16-21-143-25.
I set over $\frac{1}{4}$ corner where U.S.
notes call for

Cedar $3 N 27^{\circ} E 6 = 396 \text{ ft.}$

Tam $9 S 3^{\circ} W 25 = 1566 \text{ ft.}$

I take viz. bearings from B.T.S.

Cedar $3 N 20^{\circ} E 5.3 \text{ ft.}$

Tam $9 S 5^{\circ} W 16 \text{ ft.}$

var. 9°

Taken with Gurley compass.
We run south to about 12
and quit for night

var. 9°

Over night @ Boileau.

J. A. Hanner

7

Wahmena Trip
C. Hassel-

143-25

Sept. 18, 1914. Cont. for Wahmena.
A. M.

We continue south
@ 32 leave swamp.
Quit for dinner.
@ 36 + 15 cross Vermillion road
@ 43 enter swamp.
@ 43 + 45 enter Vermillion Creek
@ 44 + 60 leave " "
and enter cedar swamp.

We continue south
to 53 and look for $\frac{1}{4}$
corner between Secs. 21-28-
143-25 but are unable
to find it.

We find an old corner
there but not a true corner.

Quit for night @ Boileau.
Donner companion.
" & Kirt chairman.

J. A. Donner

8

Sept. 19, 1914 Cont. for Wahneua.
A.M.

We walk to $\frac{1}{4}$ corner bet.
Secs. ~~16-21~~²⁰⁻²¹-143-25 established by
Curo and run east on $7^{\circ}30'$
var. $S 87^{\circ}E$.

@ 8+60 cross Van Dick brook
country open and level.

@ 10 enter tame swamp.

@ 26+55 cross temp. line
running N. & S. @ 2679 south.

Quit for dinner.
P.M.

We continue east

@ 32 leave swamp.

@ 37+67 cross Vermillion lake road.

@ 43+40 enter little Vermillion
lake.

Quit for night @ Boileau.

Donne compassman

" & Gilt chainmen

Using small Geuley
compass and 100 ft. Chicago
Steel tape.

J. A. Danner

Sept. 20, 1914 Wahnema.

Sunday all day.

Sept. 21, 1914. Cont. for Wahnema.
A. M.

Tascher joins us. I set
over true Sec. corner of
Secs. 9-10-13-16-143-25 where
U. S. notes call for vig.

Birch 5 N 56 E 5 = 3.30 ft.

" 12 N 69 W 50 = 33.00 ft.

W. Pin 4 S 29 E 10 = 6.60 ft.

" " 10 S 13 W 15 = 9.90 ft.

Curo's notes call for.

Pop. 6 S 55° W 163.10 ft.

" 4 S 10° E 114.40 ft.

B. Ash 8 N 88° E 168.10 ft.

B. Gil. 3 N 51° W 69.74 ft.

I set over true corner and
take vig bearing from old B.T.S.

Pop. 5 S 52° W 103.8 ft.

" 4 S 3° 30' E 114.2 ft.

B.G. 3 N 74° 30' W 70 ft.

B. Ash 7 N 89° 30' E 168 ft. var. 8° 30'

J. A. Danner.

Working for Nahmerna Twp.

September.

	13	14	15	16	17	18	19	20	21	22	23	24	25	26	27	28	29	30
Frank Danner	1	1	1	1	1	1	1	0	0	0	0	0	0	0	0	1	1	1
Eapences	35 ⁰	0	4 ⁰⁰	0	0	0	0	0	0	0	0	0	35 ⁰	65 ⁰	0	0	0	0
X Geo. Boileau	0	1/2	1	1	1	1	1	0	1/2	0	3/4	0	0	0	0	1	1	1
X Louis Kirt	0	0	1/2	1	1	1	1	0	1/2	0	3/4	0	0	0	0	1	1	1
X Nels Loane	0	0	0	1	0	0	0	0	0	0	0	0	0	0	0	0	0	0
X B. H. Giechtbroch	0	0	0	1	0	0	0	0	0	0	0	0	0	0	0	0	0	0
X Arthur Clouseau	0	0	0	0	1/2	1	1	0	1/2	0	3/4	0	0	0	0	0	0	0
X John Shultz	0	0	0	0	0	1	1	0	1/2	0	0	0	0	0	0	0	0	0
X J. F. Tascher	0	0	0	0	0	0	0	0	1/2	0	0	0	0	0	0	0	0	0
X Bill Kirt	0	0	0	0	0	0	0	0	0	0	0	0	0	0	0	1	1	1
X Christ Strable	0	0	0	0	0	0	0	0	0	0	0	0	0	0	0	1	1	1
X Boileau's Team	0	1/2	1	0	1	1/4	1/4	0	0	0	0	0	0	0	0	0	0	0

For Time in October See page 24. 10

F. M. D on 17th

Sept. 21, 1914 Cont. for Wahmena.
A.M.

Using small. Gurley
compass. I run west from
true sec. corner N 89° W. var $8^{\circ}30'$

@ 4 enter swamp

@ 9 leave "

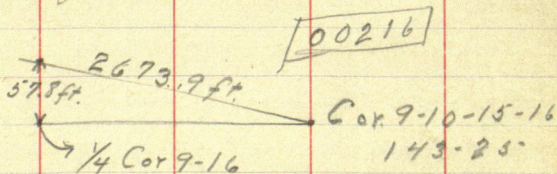
@ 14 enter "

@ 25 leave "

From here on the land
is a little marshy but
one could hardly call it
swamp.

@ 26 + 73.9 W. the $\frac{1}{4}$ corner
bet. Secs. 9-16-143-25 (established
(established by Donner from
the old B.T.) sets south 57.8 ft.

Quit for dinner @ Boileau.



P.M.

Rained nobody works.

J. F. Donner.

Sept. 22, 1914 Cont. for Wahneena.

Rained all day.

Sept. 23, 1914. Cont. for Wahneena.
A.M.

We start out @ 9 o'clock
for it was raining in the
morning.

I send Geo. Boileau to
take boat back to Jim Ross
which we had borrowed.

We go to $\frac{1}{4}$ corner bet.
9-16-143-25 just established
by me and run N. $89^{\circ}40'$ W. dist 8° .

@ 20 W enter wet swamp
Quit for dinner @ brook.
P.M.

We continue west
@ 26+57.8 the Sec. corner
of Secs. 8-9-16-17-143-25 (set
by Donner from old B.T.) set
South 12.60 ft. where

U.S. notes call for
Birch 5 N $56^{\circ}E$ 5' = 3.30 ft.

F. A. Donner.

Sept. 23, 1914. Cont' for Wahneena.
P.M.

Birch 12 N 68° W 50 = 33.00 ft.
W. Pine 10 S 13° W 15 = 9.90 ft.
" " 4 S 29° E 10 = 6.6 ft.

E 1/4 Cor. 9-16 2657.8 125 W
Sec. Cor. 8-9-16-17

I set over true Sec. corner
8-9-16-17 and run north
7° 10' var.

We run about 900 ft.
and quit for the night.
Over night with Boileau.

Note: See pages 39 & 41.

J. A. Hanner

Sept. 24, 1914. Cont. for Wahneua.
Wait for word from Curo.

Sept. 25, 1914. Cont. for Wahneua.

I get letter from Curo stating he sent my transit. Geo. Boileau and I drive to town for transit, but as the transit was checked and I did not get duplicates for it I could not get it.

Dinner @ Hotel \$35

We drive back home and when we get there I get letter with duplicate checks. Over night @ Boileau

Sept. 26, 1914. Cont. for Wahneua.

I go to town with Jim Ross for transit and I send small compass to Curo @ Walker.

Dinner @ Hotel \$35

Express on compass \$25

J. A. Donner.

Sept. 27, 1914. Cont for Wahneua.
Sunday all day.

Sept. 28, 1914. Cont for Wahneua.
Bill Kint & Christ Stroble join us.

I set over true corner of
10-11-14-15 where U.S. notes call for
Spruce 10 N 59° E 10 = 6.51 ft.

Lind 6 S 40° E 8 = 5.28 ft

Fir 10 N 87° W 25 = 16.50 ft

" 16 S 12° W 30 = 19.80 ft.

Circo's notes call for.

Cedar stump S 50° 14' W 40.05 ft.

S.W. cor. school foundation N 36° 45' E 81.45 ft.

Elm 13 S 26° E 58.74 ft.

I set over corner and take
following bears from old B.T.S.

Elm 14 S 24° 8' E 58.74 ft.

Balm stump S 52° 15' W. 40.10 ft.

corner of school N. 38° 47' E 81.45 ft.

var. 8° 30'

I run due east var. 7° 30'

@ 9 + 85.1 set Hub

@ 17 + 3.3 " "

@ 20 + 10 enter open meadow.

J. H. Downer

Sept. 28, 1914. Cont for Wahnuna.
A.M.

@ 23 leave open meadow

@ 24+8.75 set Hub

quit for dinner in shade

P.M.

Cont east

@ 30+66.3 set Hub.

We run to about 39 and
quit for rain.

Over night @ Boileaus.

Sept. 29, 1914. Cont. for Wahnuna flower day.
A.M.

Continue east

@ 39 enter tam swamp

@ 44 leave " "

@ 45+64 set Hub

@ 57+13.27 the true Sec. corner
of Secs 11-12-13-14-15 (set
by flat chain from S.E. and
N.W. B.T.S. by Danner) sets south
15.5 ft.

I set over true corner just
established by me to which
J.H. Danner

Sept. 29, 1914 Can't for Wahneena.

A. M.

Aspen stump bears $S16^{\circ}26'E$ 66 ft.

Jan $N23^{\circ}36'W$ 17.8 ft.

Aspen snag .. $N7^{\circ}27'W$ 58.2 ft

this B.T. was established by Flinn.

I set new B.T. viz.

Aspen 12 $N28^{\circ}23'W$ 77.5 ft.

Var. $8^{\circ}30'$

Witness Co. I set Lind post $4" \times 4" \times 48"$
1 ft in ground and 24 ft. north
of true corner (Hub in center
of road with tack) for true Cor.
Quit for dinner in shade.

P. M.

I set over true corner and
run north

Var. 9°

@ 7+728 set Hub

@ 12+945 " "

@ 21+90.1 " "

@ 23+20.2 " "

@ 26+64 " "

@ 34+10.5 " " 58 ft from water
edge of Mississippi River

quit for night.

J. A. Donner.

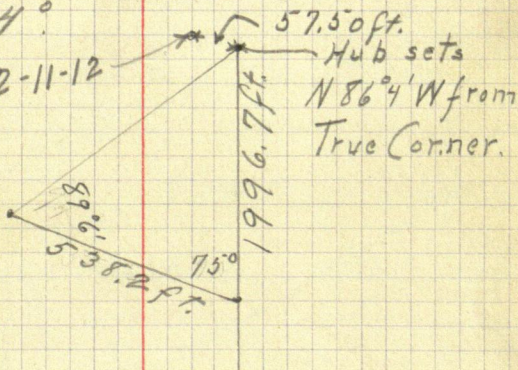
Sept. 30, 1914. Cont for Wahneena.
A. M.

I set over Hub @ $34+10.5N$
and turn $70^{\circ}W$ from temp line
and @ $5+53.1$ set Hub.

Still over Hub @ $34+10.5N$ I
set Hub across river on true
temp. line.

I set over Hub @ $5+53.1W$.
and my plate set @ zero
I turn on Hub @ $34+10.5N$
then I turn and sight on
Hub set across river and
read 94° .

Sec. Cor. 1-2-11-12



I set over Hub across river
from which the true Sec.
corner of Sec. 1-2-11-12 bears.
 $N 76^{\circ} 4' W$ 57.5 ft. var. 9°
J. H. Down

Sept. 30, 1914 Cont. for Wahnena.

I set over true Sec. corner
of 1-2-11-12-143-25 and
take viz. bearings from Old B. T. S.

Cedar $TS 40^{\circ} 44' W$ 6.5 ft.

" $65 57^{\circ} 20' E$ 13.5 ft.

Spruce $8 N 7^{\circ} 22' E$ 25.4 ft.

var. $8^{\circ} 30'$

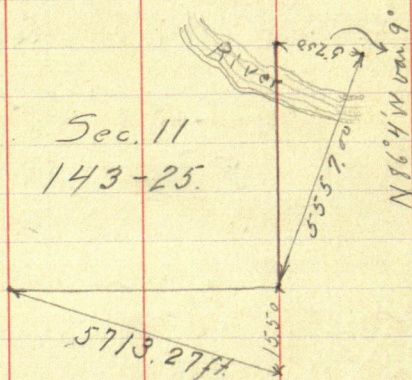
Old B. T. S. plainly marked.

Using H. & B. Transit and 100 ft.
Chicago Steel Tape.

Donner transitman

" & Kirt chainman.

Quit for night @ Boileau.



See page 145.

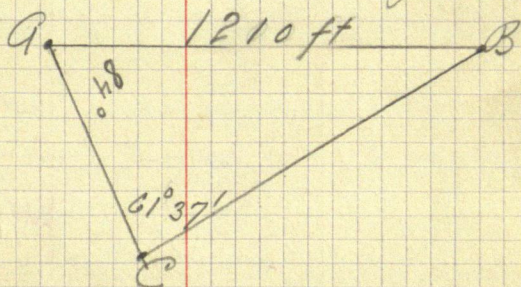
J. H. Donner

Oct. 1, 1914. Cont. for Wahnena.
A. M.

I work transit on line
on west side of river running
 $N 90^{\circ} W$

var 8°

From Hub A which I
set under transit after I
was on line and using
corner C the true sec. corner
of Secs. 1-2-11-12 for back
sight I turn $84^{\circ} E$ and set
Hub B. I set over Hub B. and
with plate @ zero and sighting
on Hub A. I turn to corner C
and read $61^{\circ} 37'$ for angle.



Giving the total distance
from A to B 1210 ft.

J. F. Downer

Oct. 1, 1914. Cont. for Wahneva.
A. M.

I set over Hub 9. and
using corner C for back-
sight I run west.

@ 16 + 8.1 set Hub.

Quit for dinner in shade.
Cont West

@ 23 + 17.4 set Hub

@ 26 + 86.4 " "

@ 28 enter Tam swamp.

We run to about 36
and quit for night.

Over night @ Boileau

Oct. 2, 1914. Cont for Wahneva.
A. M.

We continue west

@ 39 + 59.4 set Hub

@ 42 leave swamp

@ 46 + 11.1 set Hub

@ 50 + 5.5 " "

@ 52 + 6.4 " "

@ 52 + 14.7 " "

} open
Country.

J. H. Damer.

Oct. 2, 1914 Cont for Wahneema Twp.
A.M.

We look for Sec. corner
of Secs. 2-3-10-11-143-25
where U.S. notes call for.

From 4 N 30° W 20 lks.

" 5 N 15° E 18 "

To 10 S 63° W 30 "

We are unable to find any
of these but we find a
stake set on side of road
by Filmon and some B.T.S.
established by Filmon but
I notice in Filmon's notes
he says his chairman
neglected and did not
set the notes down for this corner.

Quit for dinner with Boileau
P.M.

I go out but it is awfully
windy and the sand flying
so badly so I take
my outfit to Boileau's
and quit and I go to
town with Boileau and take
train for home.

J. H. Downer

Oct. 10, 1914. Cont. for Wahneua Twp.

I come to Cohasset @ 1 P.M.
and take livery team and
drive out to Boileaus.

Supper and over night @ Boileaus.

Oct. 11, 1914 Cont. for Wahneua.
P. M.

I walk to $\frac{1}{4}$ corner bet.
11-14-143-25 and look for
corner but find nothing. I
walk to Skiff Bonas' place
and he tells me the $\frac{1}{4}$ cor.
bet. 11-14 was established by
Flinn and the old B.T.S.
were plain at that time
but in the last five years
some one had destroyed
this corner and burnt all
the B.T.S. and the corner
has not been seen
since.

I give up this corner
and decide to divide the
Sec. equally quit for night.

J. F. Damer,

Working for Wabenna Twp.

October

	1	2	3	4	5	6	7	8	9	10	11	12	13	14	15	16	17	18
Frank H Donner	1	1	0	0	0	0	0	0	0	0	1/2	1	1	1	1	1	1	1
Expences	0	0	0	0	0	0	0	0	0	5.00	0	0	0	0	0	0	88	0
x Geo Baileau	1	1/2	0	0	0	0	0	0	0	0	0	1	1	1	1	1	1	0
x Lavis Kirt	1	1/2	0	0	0	0	0	0	0	0	0	1	1	1	1	1	0	0
x Bill Kirt	1	1/2	0	0	0	0	0	0	0	0	0	1/2	1	1	1	1	0	1/2
x Christ Stroble	1	1/2	0	0	0	0	0	0	0	0	0	1	1	1	1	1	0	0

19 20 21 22 23 24 25 26 27
going home.

F. H. Donner	1	1	1	1	1	1	0	1	going home.
Geo. Baileau	1	1	1	1	1	1/2	0	0	
x Christ Stroble	1	1	1	1	1	1/2	0	0	
x Nels Randen	1/2	1	1	1	1	0	0	0	
x Tam Laughlin	1/2	1	1	1	1	0	0	0	
x Boileaus Team	1	0	0	0	0	0	0	0	0
Expences	30	0	0	0	0	0	0	0	3.91

Oct. 12, 1914, Cont. for Wahnena Twp.
A. M.

Geo. Boileau, Louis Kist, Christ
Stroble and myself walk to the
 $\frac{1}{4}$ corner between Secs. 2-3-143-25
and look for corner.

We find old B.T. established
by Filum and from this B.T.
I set true $\frac{1}{4}$ corner bet. 2-3-143-25
var. $3^{\circ}40'$

I set over true $\frac{1}{4}$ corner just
established by me where U. S.
notes call for

N.P. $15^{\circ} N 73^{\circ} E 5' = 3.3 ft$

W.P. $6 S 24^{\circ} W 30' = 19.5 ft$

Filum notes call for

W.P. stump $24 S 77^{\circ} E 44' = 29 ft$

I cannot find any of U. S. B.T.S.
but we find post drove down
where a old U. S. B.T. was is what
Geo. Boileau says for he put it
in @ the time the road was
built. This post bears $S 38^{\circ} 45' W$
 $19.15 ft$ var $3^{\circ}40'$

I set new B.T.S. viz.

J. H. Dornier

Oct. 12, 1914, Cont. for Wahneema Twp.
A.M.

N. P. 4 N $19^{\circ}36'$ E 119 ft.

N. P. 5 S $56^{\circ}45'$ W 75.5 ft.

I set iron pin 2 ft long. full length
in ground for true $\frac{1}{4}$ cor. bet. 2-3-143-25.

I work transit on line between
the $\frac{1}{4}$ corners of Secs 2-3-143-25 just
established by me and $\frac{1}{4}$ corner bet.
Secs. 10-11 established by Curro in 1913.

I chain this mile between the two
 $\frac{1}{4}$ corners running on true line
which runs on var. $3^{\circ}30'$

I find the total distance 5258.2 ft.

I set wooden Mark $4' \times 4' \times 4'$
@ 2629.1 for the true Sec. corner
of Secs. 2-3-10-11-143-25 with
new bearing trees viz. with ticks.

Aspen 4 N $17^{\circ}54'$ W 144.1 ft

" 3 N $63^{\circ}34'$ E 103.2 ft.

B. Sil. 5 S $63^{\circ}57'$ W 100.1 ft.

Fence Post S $37^{\circ}7'$ E 44.3 ft.

Var $3^{\circ}30'$

With true line from $\frac{1}{4}$ corner to $\frac{1}{4}$ cor.

we intersect temp. line running west from
1-2-11-12 @ 5223.2 and 124.1 ft. N of true Corner.

J. H. Donner.

P. M.

Oct. 12, 1914, Cont. for Wahneua Trip.

Bill Kirt joins us.

I set over true $\frac{1}{4}$ corner bet.10-11-143-25 and run south 90° E.
var. 8°

@ 8+08 E set Hunt open country

@ 9 enter small swamp.

@ 10+25 leave swamp.

@ 11+38.5 set Hunt.

@ 15 enter open meadow

@ 17+65 cross Vermillion Creek
45 ft across Creek.

@ 19+75 leave open meadow

@ 21+65 set Hunt.

We go over and triangulate the
Mississippi river again
and quit for night.

Over night with Boileau.

J. F. Donner

Oct. 13, 1914 Cont. for Wahneema Trip.
A.M.

We continue on line east
from Hub @ 21+65

@

@ 8.30 A.M. it starts to snow,
we continue working.

@ 23+43.2 set Hub

@ 26 enter cedar swamp

@ 31 leave " "

@ 32+64.8 set Hub.

@ 42+5.5 " "

@ 43 enter cedar swamp.

^{lunch} @ 45 leave " "

@ 48+5.6 set Hub.

@ 49+5.0 enter slew.

@ 54+5.0 leave " "

@ 55+8.3 set Hub

I set over Hub @ 26+64N on the
true temp line running ^{with} from
the S.E. corner of Secs. 11-12-13-14-15
-25 and set Hub @ 2778.50 for
middle of Sec.

I set over Hub @ 2778.50 and
set true $\frac{1}{4}$ corner bet. 11-12

J. A. Donner.

Oct. 13, 1914, Cont. for Wahuna Twp.
P.M.

N $86^{\circ}4'$ W 2875 ft. where H. S.
notes call for

Birch 10 S 70 W 16 = 10.56 ft.

" 8 S 44 E 15 = 9.40 ft.

We look for old corner but
are unable to find any.

I set new $\frac{1}{4}$ corner with new
B. T. S. viz.

95

Aspen 3 N $22^{\circ}45'$ W 158.5 ft.	} set with tasks var. 9°
B. Gil. 4 N $77^{\circ}35'$ E 150.1 ft.	
Cor. of log barn. S 26° W 156.7 ft.	

@ $55 + 58.5$ E 9 intersect the random
running east from $\frac{1}{4}$ corner bet.
Secs. 10-11-143-25, 98 ft. south
of true $\frac{1}{4}$ corner bet. 11-12-
143-25 just established by me.
Donner transitman.

" & Kirt chainman

Quit for night with Boileau.

J. A. Donner

Oct 14, 1914. Cont. for Wahnena Twp.
A.M.

We walk to $\frac{1}{4}$ corner
bet. 11-14-143-25 where
U. S. notes call for

Cedar $4N2^{\circ}W6 = 3.96\text{ft.}$

Spruce $6S56^{\circ}E12 = 7.91\text{ft.}$

Filums notes call for

Black Ash $5S20^{\circ}E36$

Cedar $10N17^{\circ}W53$

and as we are unable to
find any of these old
bearing trees I establish
a true $\frac{1}{4}$ corner between
secs. 11-14-143-25 at the
center of the section

On random line I
set Hut @ 2856.63 for
center of sec. from
which true $\frac{1}{4}$ corner of
secs. 11-14-143-25 sets
north 7.75 ft.

I take new bearings viz.

Cedar $8N3^{\circ}22'E 82.5\text{ft.}$ } with ticks
W.P. stump $30S38^{\circ}6'E 47.9\text{ft.}$ } var. $7^{\circ}30'$

J. A. Donner

Oct. 14, 1914 Cont. for Wahnema.
A.M.

I run north from
true $\frac{1}{4}$ corner bet. 11-14-143
- 25' just established by me
var 9°

all hard wood
@ 46 ft. N cross old road.
@ 7+90 set Hub.
@ 15+68.8 " "
Quit for dinner in shade
P.M.

Continue north.

@ 23+20.00 set Hub.
@ 25' enter cedar swamp.
@ 26+65.3 intersect N. & S. random line.
@ 33 leave cedar swamp
@ 34+57.9 set Hub.
@ 40+96.3 " "

Quit for night @ edge of brook.
Over night with Boileau.

J. A. Donner.

Oct. 15, 1914 Cont. for Wahneema Twp.
A. M.

I set over Hub @ 40+96.3
and set Hub across Creek.
thence I turn 90° and run
639.20 ft @ which point we set Hub.

I set over Hub @ 6+39.20 and
using Hub @ 40+96.3 for back
sight I turn on Hub across
Creek and read 63°14'. (See page 34)

I set true $\frac{1}{4}$ corner bet. 2-11-
143-25 from true random line.

I set over Hub on random line
@ 26+86.40 and set Hub @ 26+11.6
for the center of the north side
of Sec. 11-143-25.

Correcting back.

Hub @ 26+11.6 goes south 62.05 ft.
where I set a cedar Hub 4" x 4" x 48
24" in ground for the true
 $\frac{1}{4}$ corner bet. 2-11-143-25
with the orig. B. T. S.

Sam 5 S 33° W, 53.7 ft

N.P. 8 N 69° 3' W, 106.05 ft.

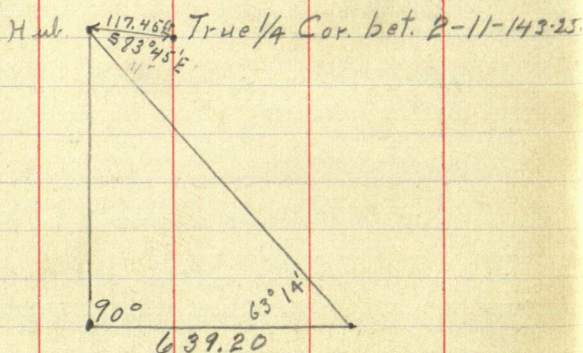
A. A. Lanner.

east & West @ 27+89 intersection.

0219

Oct. 15, 1914. Cont. for Wahneema Twp.
A.M.

The true corner between
Sec. 2-11 sets south $83^{\circ}45'E$ 117.45 ft.
of the Hub 9 set across creek
on north & south random line
thru the center of Sec. 11-143-25.



Quit for dinner in shade.
P.M.

Correcting back on
north and south random
line thru the center of
Sec. 11-143-25

Hub @ 2681.76 goes east 56.72 ft.

Correcting back on
east and west random
J. A. Danner.

101764

35

Oct. 15, 1914 Cont. for Wahneema.
P. M.

line thru center of Sec.
11-143-25.

Hub @ 1389.6 E goes north 24.50 ft.

" @ 2779.20 " " 49.00 ft.

" @ 2847.70 " " 50.1 ft.

N. & S random line intersects
E. & W " " @ 2665.3 E

" & " " " intersects

N. " S " " @ 2789 N.

I set over Hub 58.72 ft E of
Hub @ 2681.76 on N. & S. random line
and using Hub @ 2847.70 E on E
& W. random line for back
sight I set the true center
corner of Sec. 11-143-25

50.1 ft. N of Hub @ 2847.70 with
new bearings viz.

Y. Birch 8 S 73° 48' W 20.3 ft.) with

B. Ash 7 N 14° 48' E 57.7 ft } tack.

bar 8° 30'

Correcting back on north
and south random line
I set Hub with road center
J. A. Donner.

Oct. 15, 1914. Cont. for Wahnena
P.M.

Hub @ 23+20 goes east 50.80 ft.

" @ 15+68.7 " " 34.35 ft

" " 14+40.8 " " 31.55 ft.

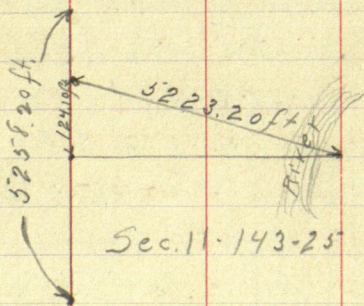
" " 7+90 " " 17.30 ft.

Using Heller & Brightly
transit and 100 ft. Chicago
steel tape.

Donner transitman

" & Kirt chairman.

Quit for night with Boileau.



See page 145.

J. H. Donner.

Oct. 16, 1914. Cont. for Wahneua Twp.
A.M.

We walk to the $\frac{1}{4}$ corner
of Secs. 9-16-143-25 established
by me with Heller & Bright's
Transit. I set over $\frac{1}{4}$ corner
and check distance and angle
to B.T.S. and find them C.K.
I set new B.T.S. vig.

Balsm 6 N 33° 19' W 40.3 ft } with tack.
Cispen 5° 55' 7" 4' W 49.3 ft.)
var. 8°

We walk to Sec. corner of
Secs. 8-9-16-17 (established by me
with Gurley compass). where
U.S. notes call for.

Birch 5 N 56° E 5 = 3.3 ft

" 12 N 68° W 50 = 33.00 ft.

W. Pine 10 S 13° W 15 = 9.90 ft

" " 4 S 29° E 10 = 6.60 ft

We find S.W. & S.E. B.T.S. plainly
marked from which I set true
Sec. corner of Secs. 8-9-16-17-143
-25 with new bearings vig.

Spruce 5 N 52° 48' E 30.2 ft.

J. A. Donner.

Oct. 16, 1914, Cont for Wahneema Sup.
A.M.

Tam. $75^{\circ}54'7''E$ 52.4 ft. } with
Tam $75^{\circ}48'15''W$ 53.10 ft. } tacks.
Tam $6N68^{\circ}19'W$ 94.6 ft. }

var. 8°

We run north on
old compass line

var $8^{\circ}10'$

@ 7+69.4 N set Hub.

@ 9 leave swamp

@ 12 enter swamp

@ 16+50 leave ..

@ 24+48 set Hub.

We look for the $\frac{1}{4}$ corner
between 8-9-143-25 where

U. S. notes call for

Lind $65^{\circ}8'W$ 15 = 9.9 ft.

Cedar $85^{\circ}35'E$ 14 = 9.1 ft.

We find the S. E. B. T. plainly
marked but blown ^{down} and
by hard labor we manage
to set the tree back in
its natural position from
which I get the true $\frac{1}{4}$

J. A. Donner.

Oct. 16, 1914. Can't Joe Wahmura Trip.
P.M.

corner of Secs. 8-9-143-25
with new bears viz.

Aspen 3539°54'W 41.60ft. } with
Aspen 4568°E 47.90ft. } tack.
var. 8°

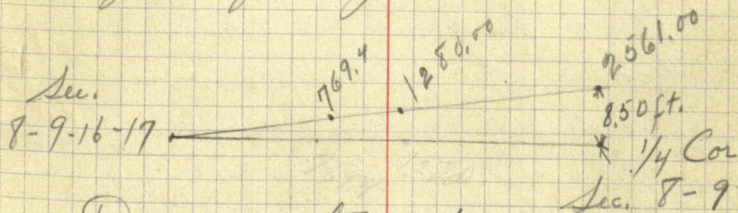
True $\frac{1}{4}$ corner of Secs. 8-9
sets west 8.50ft from Hub @
25+61.

Correcting back

Hub @ 12+80 goes west 4.25ft.

Hub @ 7+69.4 " " 2.54ft.

Quit for night with Boileau.



Danner transitman
" & Kirt chainmen.

J.F. Danner.

Oct. 19, 1914, Cont. for Wahnena Twp.

As our work is about five miles from Boileaux and as we do not know of any place to stop @ we do not work the crew.

Geo. Boileau and I take team and drive over to locate our head quarters. We drive to Nels Randone's place but as he is not home we drive to "Big Sugar Lake" to the fisherman's camp.

Dinner with "Doc," the fisherman.

We ask "Doc" if we can stay there if we bring our own chuck, and he says, "yes," so we drive back home and get ready for camp.

L.H. Donner

[00474]

[00216]

41

Oct. 18, 1914, Con't. for Wahnema.
Sunday A.M.

Bill Kirt and I walk to
Sec. corner of 8-9-16-17-143-25.
Correcting back.

Hub @ 20 goes north 9.48 ft
Hub @ 12 " " 5.68 ft.
Hub @ 7 " " 3.31 ft.
Set with Hub and road center.

Correcting back east from $\frac{1}{4}$ cor. bet.
Secs. 9-16-143, 25-

Hub @ 21	goes south	45.36 ft.
Hub @ 18	" "	38.88
" " 15	" "	32.40 ✓
" " 12	" "	25.92 ft.
" " 9	" "	19.44 ✓
" " 6	" "	12.96
" " 3	" "	6.48 ✓

Quit for dinner with Boileau.

F. A. Danner

Oct. 19, 1914. Cont. for Wahmena Top.
A.M.

Christ Stobbe, Geo. Boileau
"cook" and myself start from
Boileau's place with outfit
for fishermen's camp on
Big Sugar Lake where we
arrive about ten o'clock.

We get everything ready
and straighten up the
camp and have dinner
in camp.

Boileau cooks and
then comes out in the
field to work.

P.M.

Nels Randen, Tom Laughlin
"Red Tom", Christ Stobbe, Geo.
Boileau and I walk to $\frac{1}{4}$ Cor-
bet. 21-28-143-25 where U. S.
notes call for

Spruce 6 N 8° E 10 k.

.. 8 S 42° E 5 k.

As we are unable to
find this $\frac{1}{4}$ corner I set
F. A. Donner.

fine weather

43

Oct. 19, 1914, Cont. for Wahne. Trip
P.M.

transit up over compass
line which I run to the
 $\frac{1}{4}$ Corner Secs. 21-28. and find
it O.K.

We continue line south
@ 55 leave swamp
@ 56 + 65.2 set Hub
@ 57 enter swamp.
@ 61 leave "
@ 61 + 54.1 set Hub.
@ 63 + 77.3 " "

Quit for night.
Over night @ "Doc's camp"

G. A. Danner.

Oct. 20, 1914 Cont. for Wahneema.
A.M.

Ed. Bergen walks out
we me and we look for
the $\frac{1}{4}$ Corner of Secs. 28-33.
which we find (not the
corner but both B. T. S.
plainly marked). Bergen
goes back to camp and I
go cross country to work.
Crew is at work when I
get there.

We continue line south.
thru very hilly country

@ 66 + 44 set Hub

@ 71 + 27 " "

@ 72 + 63.8 " "

@ 78 + 42 " "

Quit for dinner @ camp.
P.M.

We continue south.

@ 81 + 65.1 set Hub

@ 88 + 43.3 " "

@ 91 + 34.8 " "

@ 95 + 30.9 " " over night @ camp.

J. A. Donner.

Oct 21, 1914. Cont. for Wahnema. Sup.
A.M.

We continue south.

@ 98+89.2 set Hub.

@ 103+39.9 " "

@ 105+84 " "

We look for $\frac{1}{4}$ Corner bet. Secs.
28-33-143-25 where U.S. notes
call for viz.

Ash 10 S 55 E 18 = 11.88 ft

Sugar 8 N 50 E 14 = 9.24 ft.

We find both trees plainly
marked from which I set a
4" X 4" X 48" iron wood post.

I intersect north and south
random line @ 10582.30 S,
11.6 ft. east of true $\frac{1}{4}$ corner - 28-33.

Correcting back

Hub @ 9259.60 goes west 10.15 ft.
where I set a 4" X 4" X 48" iron
wood post for the true $\frac{1}{16}$ Cor.
north of the $\frac{1}{4}$ Cor. bet. 28-33
with the following B.T.S.

Sugar 5 N 54° 45' E 38.70 ft } var
Balsam 5 S 33° 56' E 35.10 ft } 8°

J.H. Donner

Oct. 21, 1914 Cont for Wahneena.

A.M.

North.

$\frac{1}{4}$ Cor. 16-21

105 52.30

105 52.91.15

$\frac{1}{4}$ Cor 21-28

South

$\frac{1}{4}$ C. 28-33

Quit for dinner @ camp.

P.M.

Set over true $\frac{1}{6}$ Cor.
and run $S 89^{\circ} 45' W$ var. 8°

@ 3 + 60.80 W set Hub.

@ 11 + 56.2 W " "

@ 17 + 97.1 " " "

@ 17 + 27.6 " " "

Quit for night @ camp.

Oct. 22, 1914 Cont for Wahneena.

A.M.

We continue West

@ 20 + 79.4 set Hub.

@ 22 + 47.8 " "

@ 24 enter swamp cedar

@ 29 + 50 leave " "

@ 31 + 56 set Hub.

Quit for dinner @ camp

J. A. Donner.

Cold and raining 47

Oct 22, 1914, Cont. for Wahuena Trip.
P.M.

We continue West.

@ 35+51 set Hut.

@ 38+50 enter cedar swamp.

@ 41+47 set Hut

@ 41+60 enter lake

@ 49+50 leave lake enter open meadow.

@ 50+92.7 set Hut.

@ 51+25 leave open meadow.

@ 54+10.5 set Hut, enter pasture open

@ 55+48 cross Skelly Brook. 6 ft. wide.

@ 59+28 set Hut

@ 59+75 cross Big Vermillion Brook 10 ft. wide.

@ 66+50 leave pasture

@ 70+82 cross brook 2 ft. stream.

@ 79+80.7 set Hut.

Quit for night @ camp.

Oct. 23, 1914, Cont. for Wahuena Trip.

We walk to Sec. Corner of
Twp. 29-30-31-32 where U. S.

Notes call for.

Tam 85 69° E 4 = 24.7 ft.

10 N 43° W 40 = 24.74 ft.

6 S 72° W 7 = 5.1 ft.

Cedar 3 N 29° E 30 = 19.7 ft.

J. A. L. Donner.

Cold and drizzling.

Oct. 23, 1914. Cont. for Wahneema.

A.M.

We find S.E. & S.W. B.T.S.
plainly marked from which.
I set 4" x 4" x 48" cedar Hut for
the true Sec. corner of Secs. 29
- 30 - 31 - 32 - 143 - 25 with
new bearings as follows.

Cedar $75^{\circ}48'35''E$ 7.6 ft" $5^{\circ}N 45^{\circ}45''W$ 19.1 ft" $7^{\circ}N 26^{\circ}33''E$ 36.2 ftSpruce $65^{\circ}81^{\circ}40''W$ 8.4 ftvar. 8.30° We run north var. 9° ① $5+92.7$ set Hut.② $8+72.7$ " "③ $11+51.3$ cross E. & W. random line④ $11+60.2$ set Hut,⑤ $26+32.4$ " "

We look for $\frac{1}{4}$ Cor. bet.
Secs. 29-30-143-25 where U.S.
note call for

Cedar $10^{\circ}N 6^{\circ}W 15'$ - 9.9 ftSpruce $14^{\circ}N 52^{\circ}E 30'$ 19.8 ft

We find N.E. stump

J.A. Donner.

0248

Cold

49

Oct. 23, 1914, Cont. for Wahnuna
P.M.

with marks which I make
out to be B.T. from which
I set a 4"X4"X48" cedar Hub
with new B.T.S. as follows.

Cedar $4510^{\circ}10'E$ 29.4 ft.

Dead " $5^{\circ}N60^{\circ}45'E$ 36.3 ft.

var $8^{\circ}30'$

for the true $\frac{1}{4}$ corner bet.
Secs 29-30 - 143-25 which
set 66 ft. west of Hub
@ 2652.4 on N. & S. random
line.

Correcting back.

Hub @ 1326.2 goes west 33 ft.

" " 1160.2 " " 28.76 ft.

Running on true line
north and south I intersect
random line running east
and west thru the center
of Sec. 29-145-23 @ 7997.00N.
174.9 ft. south of $\frac{1}{16}$ Cor. bet. $\frac{1}{4}$ Cor.
29-30 and Sec. Cor. 29-30-31-32.

S
Sec. Cor
29-30-31-32.

2652.40

N.
 $\frac{1}{4}$ Cor.
Secs: 29-30.

50

[02184]

Oct. 24, 1914, Cont for Wahneva.
A.M.

Correcting back on east
and west random line
thru the center of Sec.
29 & 28-143-25

Hut @ 6664.60 goes north 145.75 ft.

I set Aspen Hut 4 "X" 48"
here for true $\frac{1}{16}$ corner
with bearings viz.

Aspen S 54.5° W 29.2 ft

Aspen 4 N 72° W 22.2 ft.

Hut @ 5928 goes north 129.46 ft.

" @ 5410.50 " " 118.16 ft.

" @ 5092.70 " " 111.22 ft.

" @ 4147 " " 90.55 ft.

" @ 3156 " " 68.91 ft.

" @ 2247.50 " " 49.06 ft.

" @ 1497.10 " " 32.69 ft.

Donner transitar
.. & Boileau chainman.

1742 ft. $\frac{1}{16}$ corner north
of the $\frac{1}{4}$ corner bet.
Sec. 28-33-143-25
7997 ft.
S. H. Donner

Oct. 24, 1914. Cont. for Wahneva.
A.M.

Correcting back on $\frac{1}{4}$ line
true center of Sec. 28-143-25.

Hub @ 8843.80	goes west	9.63 ft.
" " 7842	" "	8.54 ft.
" " 7127	" "	7.76 ft.
" " 6644	" "	7.24 ft.
" " 6154.1	" "	6.70 ft.
" " 5665.1	" "	6.17 ft.
" " 5291.2	" "	5.80 ft.

for the true $\frac{1}{4}$ Corner between
Secs. 21-28-143-25 with new
B. T. S. vig.

Cedar 10 N 23° 35' W 5.60 ft
" 3 S 29° 30' W 8.30 ft
var 9°

Hub @ 40 goes west 4.36 ft.
" " 3568.3 " 3.88 ft.

Here we intersect the state
road @ 10396.80 at which point
this road ties on to state
road.

Donner Transitman
" & Boileau chairman.
J. H. Donner.

Oct. 24, 1914 Cont for Wahneema
P.M.

I check up my books
and make out time.

Oct. 25, 1914 Cont Wahneema
Sunday all day.

Oct. 26, 1914. Cont for Wahneema
A.M.

I go to meeting @
Arthur Claman's house
and put in all my
time for work which
was all O.K. to the
board and I received
my check.

P.M.

Geo. Bailean takes
me and my outfit
to town.

Supper @ Hotel \$.35-
Room " " .35-

I leave Cohasset on
midnight

G.P. Downer.

Record No. 785

53

Oct. 27, 1914.

Leave Cohasset 12.45 P.M.
fare to Benedji \$1.32
lunch @ .. .20

I leave Benedji @ 6.30 A.M.
and arrive @ Walker about
8 o'clock for \$1.74

Bus line \$1.25

Dray " \$1.25

Lunch @ Rest. \$2.00

I try and look up Jack.
and the Hello girl tells
me he is @ Braided
I try and call him
but can not locate
him.

Get room @ chas and
go to bed. I tell central
to try and find Curo.

I get up about 4 P.M.
and get a lunch \$1.20

Central says Curo said
I should stay @ Hotel
and he would be
J.P. Drumer

Oct. 22, 1914.

down on the midnight train.

Supper and overnight
@ Chase Hotel.

I have steel tape
fixed @ Hdwr. store. \$25

Oct. 28, 1914. Private Work.

Meet Curo @ Chase
Hotel at Breakfast.

We work in office
until 3 o'clock and I
take train for Pequot.

Hotel Bill \$1.75

Dinner 1.00

Received from Curo for
work and expenses up
to Oct. 28, 1914. \$115.60

J. H. Downer.

Peguat

① Todd De Groot
136-80

(55)

Oct. 28, 1914. Private Work.
P.M.

I take way freight for
Peguat. I get off @ Hackensack.
Supper @ Hotel .35
Over with Wagner @ Hackensack.
Peguat + Hotel .35

Oct. 29, 1914 Private work
A.M.

Breakfast @ Hotel .35
I take 10.10 train for Peguat.
Dinner @ Hotel .50 @ Peguat.
P.M.

I hire auto living to take
me out to Todd De Groot.
I find De Groot and we
look up a crew for the
morning.

L. H. Downer

247

Oct. 30, 1914 Private Work.

A.M.

Adolph Hagen, Frank Hagen, Todd DeGroot and myself go to Sec. corner of Secs. 26-27-34-35-136-30

Where H. S. notes call for

W. P. 30 N 80° E 23 = 15.15 ft

" " 10 S 10° E 125 = 82.50 ft

Dead " " 14 N 22° W 29 = 19.14 ft

We find the N.E. tree still standing and plainly marked and the N.W. stump from which I set a 4" x 4" x 48" Aspen Hub. full length in ground for the true Sec. corner of Secs. 26, 27, 34, 35-136-30.

We drive to the 1/4 Cor. between Secs. 34-35-136-30 where H. S. notes call for

J. P. 10 N 54° E 16 = 10.56 ft

" " 11 N 50° W 19 = 12.54 ft

We are unable to find any of these. There are no

Oct. 30, 1914. Private Work
A.M.

J.P. trees standing @ present
time and as none of the
settlers ever saw this $\frac{1}{4}$ Cor.
we drive on to the Sec. Cor.
of Secs. 34-35-2-3 - ¹³⁵⁻¹³⁶⁻³⁰ 136-30-31
where U.S. note call for

Maple $73^{\circ} 77' W 8 = 5.94 ft. 5.28$

W. P. $55^{\circ} 43' E 15 = 9.90 ft.$

B. Oak $20 N 46^{\circ} E 25 = 16.50 ft.$

" " $24 N 36^{\circ} W 61 = 40.24 ft. 40.26$

We find and old stake for
the true Sec. corner set by
of Cass County 18 years
ago and we find the N.E. stump
of the old B.T.

The corner stake is four ft.
off so I set a iron pipe 2 ft.
long for the true Sec. Cor.
with new B.T.S. vig.

Red Oak $8 N 36^{\circ} 58' E 105.15 ft.$
Corner post of fence bears } with
 $S 34^{\circ} 21' E 43.50 ft$ } tacks.

var. 9°

J.H. Donner.

247

Oct. 30, 1914. Private Work.

P.M. ¹³⁵⁻¹³⁶⁻³⁰

33-34-3-4 - ~~136-30-31~~ where
M.S. notes call for.

Aspen 16 N 48° E 120 = 79.20 ft.

Pine 24 N 12° W 106 = 69.12 ft. 69.96

" 18 S 74° W 94 = 62.04 ft.

The settler claim there has
been and iron pipe set here
for the true Sec. corner but we
are unable to find this pipe.

I set a Hub in the center of
the road from two stumps
one N.W. and the other S.W. they
check for angle var. 12° and
the N.W. one checks on distance.

We drive to the $\frac{1}{4}$ between
Secs. 33-34-136-30 where M.S. notes
call for viz.

Bk. Ash 7 S 50° E 17 = 11.13 ft.

E. ln 8 S 46° W 35 = 36.30 ft.

We are unable to find
any corner here or old B.T.S.
and as none of the settlers
have ever seen the corner

H.A. Downer 11.247

Oct. 30, 1914. Private Work.
P.M.

we drive to the Sec.
corner of Secs. 27-28-33-34-
-136-30 where I can not find
any notes for but they
are in the office for I
took a bunch from there
and that they would
cover every thing but I
do not find the notes
for this corner.

We look around where
settlers say old corner was
but as this country is so
badly burnt we do not
find anything.

Quit for night over
night with Hagen.

Oct. 31, 1914, Private Work.

A. M.

Todd De Groot, Frank Hagen,
Adolph Hagen and myself walk
to Sec. corner of Secs 34-35-2-3
- 136-30-31 and run north
var. 10°

@ 24+57.5 set Hub.

We continue to about 47
and quit for dinner.

Dinner with Hagen.
P. M.

We continue north.

@ 5211.8 set Hub from
which the true Sec. corner
of Secs. 26-27-34-35-136-30
set N. $40^{\circ}47'E$ 99 ft.

I set our true Sec. corner
of secs. 26-27-34-35-136-30
and run N. $89^{\circ}45'W$.
var. $9^{\circ}30$

to about 900 ft.

Correcting back on north
and south random line bet.
Secs. 34-35-136-30

247

J. H. Downie

Oct. 31, 1914. Private Work.

P. M.

Hub @ 2605.90 goes N $40^{\circ}47'E$
49.50 ft. where I set a 4" x 4" x 4 ft.
oak Hub for the true $\frac{1}{4}$
Corner between 34-35-136-30.

We quit for night night.
Todd De Groot takes
me to Peguot.

Supper @ hotel

I leave on 1.27 train for
Hackensack

Hotel bill \$ 1.35

Auto livery 5.00

Telephone .35

R. P. fare .60 to Hackensack.

Working for Todd De Groot October 1914

28293031	
F. A. Danner	0 1 1 1
Expences	6.70 0.146
Todd De Groot	0 0 1 1
F. Hagen	0 0 1 1
A. Hagen	0 0 1 1
De Groot's Team	0 0 1 0

247

J. H. Danner.

Nov. 1, 1914 Sunday

I arrive in Hackensack
@ 2.30 A.M. get room @ Hotel
Lake View and get to bed.

Breakfast @ Hotel.

I play dinner.

Supper and over night @ Hotel.

Nov. 2, 1914

Breakfast @ hotel Lake View
I go over to Curo's home
and we look up notes and
make out time all the A.M.

Dinner @ Lake View Hotel.

Roy Bryant, Curo and I
walk out to twin lake
north east of Hackensack where
I show them the witness
corner

We walk north around
the lake and across country
to John Finnley's place.

From where Curo & Bryant
goes to Bergman's place and
J.P. Downer.

Nov. 2, 1914 Continued

I walk back to Hackensack
and change my clothes.

Hotel Bill \$1.90

I take 4:19 train to Cass
Lake via. Walker

R. R. to Walker \$.24

Supper @ Chase Hotel .50

Bus to G. N. depot \$.25

\$4.44

Fare from Walker to Cass Lake

I get room @ Endion Hotel.

Nov. 3, 1914 Working for P. Moe.

As it is election today I
wait for Peter Moe to come
in.

About 10 o'clock it starts
to rain. Dinner @ Endion.

After dinner I see Peter Moe
and I tell him to notify
all parties owning land in
Sec. 5 which he does. Moe
tells me there is no room
in the country. I must stay at
Hotel in town which I do.

J. J. Donner

Nov. 4, 1914 Working for Peter Moe
A. M.

I have breakfast @
Endion hotel and walk out -
to Peter Moe's place. Get there
@ just 7.45 A. M.

Peter Moe Sr., Peter Moe Jr. and
I walk to the $\frac{1}{4}$ corner between
Sec. 5 - 8 - 145 - 31 where U. S.
notes call for vig.

J. P. 8 N 63° W 5 = 5.25 ft.

J. P. 65 25° E 25 = 16.50 ft.

I havint any notes with
me so I set a Hub from
which the N. W. B. I. bears.

N. 65° 12' W 25.20 ft.

var. 9°

I set over this Hub and run
north var. 9°

@ 2 + 11.1 set Hub

@ 9 + 75.7 " "

@ 16 + 41.4 " "

@ 26 + 58.1 " "

Quit for dinner with P. Moe.

Private Work on Sec. 5. - 145-81
November 1914

	2	3	4	5	6	7
Frank A. Donner	0	1	1	1	1	1
Expenses	3.38	0	0	0	0	0
Peter Moe Sr.	0	0	1	1	1	1
Peter Moe Jr.	0	0	1	1	1	1
Swan Ekstrom	0	0	1	1	1	1

46.5 With Moss Co. r.

393

67

G. A. Donner

68

393.

Nov. 4, 1914. Private work for P. Moe.
P. M.

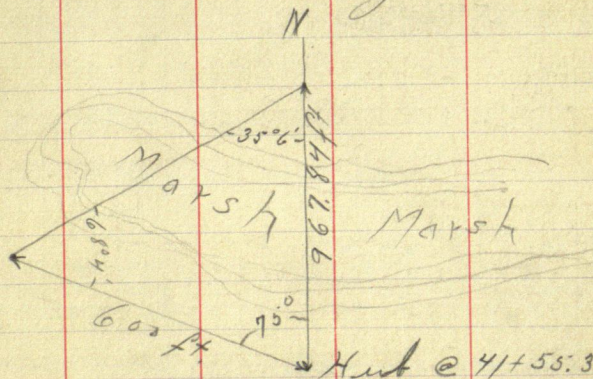
We continue north
@ 28+90 enter marsh
@ 29+80 leave "
@ 36+10.6 set Hut
@ 41+55.3 " "

Quit for night.

Supper, and over night @
Indian Hotel.

Nov. 5, 1914. Cont. for P. Moe.
A. M.

I set over Hut @ 41+55.3 and
set Hut across marsh which
I must triangle.



S
J. H. Donner.

Nov. 5, 1919 Cont. for P. Moe.

A. M.

I set over Hail across marsh and continue north

4155.3 ft. + 967.84 ft dist. across marsh
= 5123.14 ft. dist. to Hail across marsh.

@ 5237.84 set Hail from which
the $\frac{1}{4}$ Cor. between Secs. 5-32-145
-31-144-31 where U. S. notes call for.

N. P. 24 N 27 E 50 = 33.00 ft

J. P. 9.5 75° W 3 = 1.98 ft

(This corner was previously
set by Harry Todd, which is O.K.)

Hail @ 5237.37 sets 131.70 ft west
of true $\frac{1}{4}$ Corner.

I set over true $\frac{1}{4}$ Cor. and
run S. 89° 35' W.

We run to about 1300 W and
quit for dinner with P. Moe.

P. M.

We continue chaining west
for this line has been cut
out by Todd.

@ 2632.4 W the true Sec. Corner

J. A. Doman.

Nov. 5, 1914 Cont. for P. Mac.
P. W.

of Secs. 5-6-31-32-145-31-
144-31 sets south 17 ft. @
which point a iron pipe was
set by J. W. Curo.

Correcting back:

Hub @ 1316.20 goes south 8.50 ft.
where I set a 4"X4"X48" Aspen
post for the true $\frac{1}{16}$ Corner
with new B.T.S. viz.

Aspen 4 N 45° 26' E 54.50 ft

" 3 S 8° 36' W 47.40 ft

var 8° 30'

I set over true $\frac{1}{16}$ corner
just established by me
and run south var 8° 30'
We run to about 1300 and
quit for the night @
Endion Hotel.

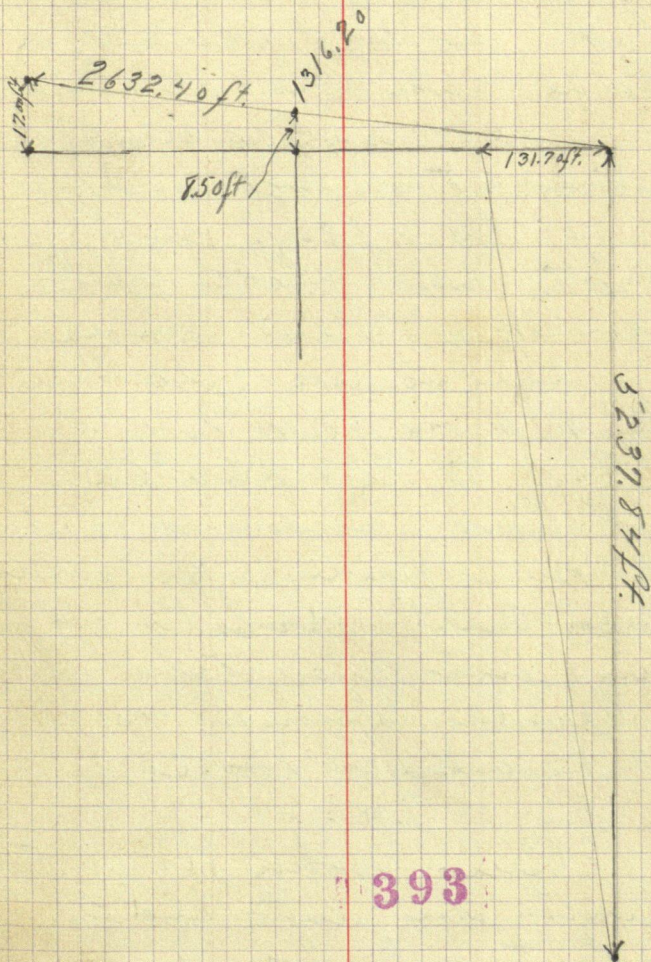
Curo comes on 6.55
train and we walk out
to P. Mac for my outfit
and tie up the work.
Down transman

J. A. Down

393

71

Nov. 5, 1914. Cont. for P. Moe.
N.W. of Sec. 5-145-31



J. A. Donner.

D
138-29

Nov. 6, 1914. Working for Cass County.
A. M.

Curo & I leave Cass
Lake on 6.55 train for
Pine River via Walker.

We arrive @ Walker
about 8 o'clock and go
up to office and get
notes and plots for
work @ Pine River.

We leave Walker
@ 9.19 on M. & T. R. R.

Fare to Pine River \$.62

I have lunch @ Rest
@ Pine River while Curo
and Bill Moulster go out
in auto to take some
level. Lunch \$.40

Dinner @ Hotel.

P. M.

Curo, John Moulster
with his auto and I
start out for Anson
Beals place we get
into a mud hole

F. H. Danner.

Nov. 6, 1914 for Cass County.
P.M.

and work hard for
about an hour but
can't get out. We get
team to pull us out.
We stop on road and
Curio takes me over to
M.C. No. 10-138-29 and
shows me the old B.T.
there from which I am
to set a M.C. corner and
run east.

We walk back to auto
and drive to Anson Beal's
place where I get off
and stay and Curio
goes back to Pine River.
Supper and over night
with Anson Beal.

J.H. Danner.

Nov. 7, 1914 Cont'd for Cass County,
A.M.

Arson Beals, Leslie Beals
and myself walk to W.C.
No. 10 - 138-29 where U.S. notes
call for

Sam 6 N 55° E 245

" 12 S 84° E 253 = 166.95 ft.

We find the old S.E. B. T. plainly
marked from which I set
a 4" x 4" x 48" Ash post for the
true W.C. Corner No. 10 - 138-29.

As this true W.C. Corner sets
a little in the lake I set
a witness corner S 89° 45' E
var. 9° 46.50 ft.

We continue east
Dinner

@ 12 + 81.90 set Hub

@ 18 + 91.7 we look for 1/4
corner bet. Secs. 1-36 - 138-29
- 13¹³⁹-29 where U.S. notes call
for viz.

Sugar 7 S 4 W 10

B. Rich 6 N 53° E 11

We are unable to find
J. A. Donner.

Working for Cass County

④ 138.29

70-

	November											
Frank A. Donner	6	7	8	9	10	11	12	13	14	15	16	17
Expences	1	1	0	1	1	1	1	0	0	0	1	1
Anson Beals	102	0	0	25	25	0	135	0	0	0	125	0
Leslie Beals	0	1	0	1	1	0	0	0	0	0	0	0
J. W. Curo	0	1	0	0	0	0	0	0	0	0	0	0
J. L. Socks	0	0	0	1	1	1/2						
H. McFarland	0	0	0	1	1	1/2						
Leonard Clover	0	0	0	0	0	0	0	0	0	0	0	1/2
Anson Beals Team	0	0	0	0	0	0	400	0	0	0	0	0

little book

not paid

J. A. Donner.

Nov 7, 1914 Cont. for Cass County
P.M.

- any old B.T.S. here so
we quit for the night.
Over night with Beals.

Nov. 8, 1914 Cont. for Cass County
Sunday nobody works.

Nov. 9, 1914 Cont. for Cass County
A.M.

J. L. Socks and H. Mc. Farlen
join us.

We continue east

@ 4531.56 E set Hub where
we look for the Twp. Cor.
when U.S. notes call for

Asp. 11 N 52 E 39 - 25.65 ft.

Birch 55 48 E 21 - 13.86 ft.

.. 6 S 41 W 15 - 9.90 ft.

.. 12 N 8 W 30 - 19.80 ft.

As we are unable to
find any old B.T.S. here
we continue east

@ 51.20 set Hub.

J. A. Donner

Nov. 9, 1914. Cont. for Cass County.
A.M.

Quit for dinner with Socks. 4.35
P.M.

We continue east.

@ 63.8 set Hub.

@ 83.00 " "

@ 94.11.8 " " from which
the true Sec. Corner (where
U. S. notes call for.

Asp. 12 N 33 E 53 = 34.98 ft.

" 10 S 72 E 11 = 7.26 ft.

" 10 S 13 W 8 = 5.28 ft.

" 11 N 50 W 10 = 6.6 ft.

sets 130.60 ft. south var. 8°

This corner was set but
as it did not check for
measurement nor angle

from the S.E. & S.W. B. T. S.
I set a new Sec. Corner
from the S.E. & S.W. B. T. S. by
proportion

Donna transietman

" and Beals chairman.

Quit for night with Beals.
J. H. Dower.

78

⑦

138-29

Nov. 10, 1914, Cont. for Cass County,
A. M.

I check the west line
of Sec. 31 - 139-25 running
south (work done by Clark
a few weeks ago) and as
I find the chaining good
and the line perfectly
straight I continue this
line south.

@ 57+89.6 set Hub.

@ 70+20.1 " "

Quit for dinner with Locks
dinner \$3.50

P. M.

We continue south

@ 79+20 we look for $\frac{1}{4}$ Cor.
where U. S. notes call for

U. S. 10 S 22 E 45'

U. S. 12 S 19 W 33'

As we are unable to find
anything here we continue
south

@ 84.3 set Hub

@ 90+40.6 " "

J. A. Domes.

Nov. 10, 1914, Cont. for Cass. County.

P.M.

We continue south to about 103 and quit for the night
Over night with Beals.

Nov. 11, 1914. Cont. for Cass County.

A.M.

We continue south
We look for the south east
Sec. corner of Sec. 1 - 138-29
where U. S. notes call for.

W.P. 12 N 61 E 38 = 25.08 ft.

" " 22 S 2 1/2 E 38 = 25.08 ft.

" " 15 S 88 W 68 = 44.18 ft.

W.B. Ch. 13 N 11 W 28 = 18.48 ft.

We find the north east stump
badly burnt but we still
can see the old B.T. on it.

We also find an old snag
in the north west which
looks as tho it was the
old B.T. from these two
I set a 4" x 4" x 48" Aspen
Hub for the true Sec. Corner.

L. A. Donner, by flat chain.

80

01546

0138

②

Nov. 11, 1914. Cont. for Cass County.
A.M.

I intersect the north
and south random line
@ 106 72.50 ft south 16.50 ft.
east of the true Sec. Cor.

Correcting back.

Hub @ 53 goes west 8.19 ft.

" @ 52 " " 8.04 ft.

I set over corrected Hub
@ 53 and using Hub @ 52
for foresight I run north
to east and west random
line.

Correcting back on east
and west random line
on the north side of Sec.
1 - 139-29.

Hub @ 47 goes south 64.86 ft.

" @ 48 " " 66.24 ft.

I set over corrected Hub
@ 47 and using Hub @ 48
for foresight I run to
the intersection of the
corrected north and south

J. A. Donner

Nov. 11, 1914 Cont. for Cass County,
A.M.

line where I set a
4" x 4" x 48" birch post for
the true Twp corner
of Twp. 138-29-138-28
139-29-139-28.

Quit for dinner with
Arson Beals.
P.M.

I write up my notes
and as we got in late
for dinner we decide
to drive in the morning.

Nov. 12, 1914 Cont. for Cass County,
A.M.

A. Beals takes me to
Pine River with outfit.

I call up Curo @ Walker
and he tells me to go
back and that Ben Fordyce
had some work to be
done.

Dinner @ Ager Hotel .25⁰⁰

J. H. Donner.

Nov. 12, 1914 Cont for Cass County,
P.M.

I see J. Sheppard in town and as he is going home I take my outfit and go back to A. Beal's place.

Paid Sheppard \$1.00 for bring me out.

Supper and over night with Beals.

Nov. 13, 1914.

Hunting all day.

Nov. 14, 1914.

Hunting all day.

Nov. 15, 1914.

Sunday
P.M.

I take my outfit and go to Henry Gloos place. Supper and over night with Gloos.

J. A. Donner.

Nov. 16, 1914

A. M.

I walk over to Ben Fordyce and he tells me that they want 3 miles of road surveyed.

Starting @ the Sec. Cor of Secs. 15-16-21-22 and thence east 3 miles to Twp. line.

And he also tells me that Mr. Botz has some work to be done 560 acres to survey.

Dinner with Gloues.
P. M.

Myke Wideman takes me and outfit to town. Charge for trip \$2.00.

I call up Caro @ Walker and I tell him what work there is to be done. He tells me if I can't do anything else I should take a few iron corners from town and set them on the T. A. Donner.

Nov. 16. 1914

P.M.

work I just finished,
because there is too much
water on this other work
and we want to let
it freeze so we can cross
on the ice.

I go over and see
W. L. Forbes and he tells
me I can get the iron
corners @ Weber & Hill's Hardware
store so I go over and we
look for the corners but are
only able to find one corner
so I take that. I go back to
see Forbes but find that he
took the train to Walker so
I go and see Fred Moultrie and
he said he would look up
some corners and send them
out tomorrow.

I take living auto out
to Clovis. \$2.50 charges.
Supper and over night @ Clovis.
J. H. Downer.

Nov. 17, 1914. Working for Cass County.
A.M.

Leond Glover walk to
to Trip Corner of Trips
Ponto Lake - Wabedo and Timothy.
Leond Glover says he saw
the old B.T. there 3 yrs ago
we look for the old B.T.
but as we are unable to
find this we set the
iron corner where I
established the true Trip
corner a few days ago.

We set this 2 inch cast
iron pipe 24" in the ground.
No cap.

Dinner with Glover.
P.M.

I see Fordyce and we
get crew ready to start
work in the morning. I
look up notes for the
work.

Over night @ Glover.

J. N. Donna,

Nov. 18, 1914. Working for Timothy Tulp.
A.M.

Ben Fordyce, Amos Fordyce
and I walk to the Sec.

corner of Secs. 15-16-21-22-138
- 29 where U.S. notes call for

B.P. 6 N 69 E 51 = 33.66 ft.

B.P. 4 N 67 W 106 = 69.96 ft.

B.P. 5 S 48 E 9 = 5.39 ft.

B.P. 4 S 25 W 7 = 4.62 ft.

As there is a cast iron corner
set here by Curo. I start
from here and run N 89° 53' E
var 8' 15"

@ 19+49 set Hub.

Quit for dinner with Clovers.

P.M.

We continue east

@ 20 enter open meadow

@ 27 enter slaw.

@ 43 leave same

@ 43+50 cross Fordyce road.

@ 44+76 set Hub.

Quit for night with Glovers.

L. A. Donner.

Nov. 19, 1914. Cont. for Timothy Twp.
A.M.

I walk over to Charles Glover and call up C. E. Michell the town clerk of Timothy Twp. He tells me the only Petition for a road that he has on record is the Petition Ben Foidyce has, that is starting @ the S.W. Corner of Sec. 15-138-39 thence east to the S.E. corner of Sec. 15-138-39. Telephone charges .40

I walk out to Ben Foidyce and we continue east with our work.

@ 50 enter hay meadow
@ 52+80 we look for Sec. corner of Secs. 14-15-22-23 - 138-29 where U.S. notes call for

N.P. 14 N 87° W 635 = 419.09 ft.

N.P. 16 S 8° W 640 = 422.40 ft.

Quit for dinner with Glovers
J. A. Dummer

Nov. 19, 1914. Cont. for Timothy Tarp
P.M.

We look thoroughly for
these B.T.S. but we are
unable to find them.

There are not any big
stumps in sight so we
continue east to 6500 and
quit for the night.

Over night with G. Looe.

Nov. 20, 1914. Cont. for Timothy Tarp.
Hunting

Nov. 21, 1914. Cont. for Timothy Tarp.
A.M.

We continue east.

@ 72 set Hub.

@ about 79 we look for $\frac{1}{4}$
Cor. between Secs. 14-23-138
- 29 where U. S. notes call
for

Maple $7N 29E 20 = 13.20 ft.$

Ash $4S 26W 25 = 16.50 ft.$

Quit for dinner with Botz.
\$2.50 paid.
J.H. Downer.

Nov. 21, 1914 Cont. for Timothy Trap
P.M.

We look for the $\frac{1}{4}$ Cor.
between Secs. 14-23 but are
unable to find it.

Nothing but big pine
stumps here and we find
nothing of a maple around
this part of the woods.

We quit for the night.
and the men take
their axes in to sharpen
them.

Over night with gloves.

Nov. 22, 1914 Cont. for Timothy
Sunday all day.

Nov. 23, 1914 Cont. for Timothy
Hunting.

J. A. Donner.

Working for Timothy Twp.

IN 138-20

November

18	19	20	21	22	23	24	25	26	27	28	29	30
1	1	0	1	0	0	1	1	0	1	1	0	1
0	4	0	25	0	0	25	25	0	25	0	0	0
1	1	0	1	0	0	1	1	0	1	1	0	1
1	1	0	1	0	0	1	1	0	1	1	0	1
0	0	0	1	0	0	1/2	1	0	1	1	0	1
0	0	0	0	0	0	0	0	1/2	0	0	0	0

→ F. H. Donner
Expences
→ Ben Fordyce
→ Amos Fordyce
→ Ernest Fordyce
→ Frank Botz

Will 19175 Team.

December

9 10 11

1 1 1

20

December

1	2	3	4	5	6	7	8	9	10	11	12	13	14	15	16	17	18
1	1	1	1	1	0	1	1	1	1	1	1	0	1	1	0	1	1
1	1	1	1	1	0	0	1	1	1	1	1	0	1	1	0	1	1
1	1	1	1	1	0	1	1	1	1	1	1	0	1	1	0	1	1
1	1	1	1	1	0	1	1	1	1	1	1	0	1	1	0	0	0
1	1	1	1	1	0	1	1	1	1	1	1	0	1	1	0	0	0

→ F. H. Donner
→ Ben Fordyce
→ Amos
→ Walter Williams
→ Leon Glover
→ John M. Curo

O. H. Donner

91

Nov. 24, 1914. Cont for Timothy Twp.
A.M.

Ben Fordyce, Amos
Fordyce and I walk to
where the $\frac{1}{4}$ corner ought
to be and we continue
east to about 90 and
quit for dinner with
Fordyce. 5.25
P.M.

Jess. Fordyce joins us.
We continue east.

@ 94+82 set Kut.

We run east to 105 E
and quit for the night.
Over night with Sloons.

Nov. 25, 1914, Cont for Timothy Twp.
A.M.

We look for the Sec.
Corner of Secs. 13-14 - 23-23 -
138-29 where U.S. notes
call for vig.

J.H. Downer.

Nov. 25, 1914, Cont for Timothy Trip.
A.M.

W.P. $15^{\circ}N 73^{\circ}E 212 = 139.92 \text{ ft.}$

Asp. $145^{\circ}89^{\circ}E 230 = 157.96 \text{ ft.}$

W.P. -- $N 70^{\circ}W 100 = 66.00 \text{ ft.}$

As we are unable to find anything here we continue east to about $108^{\circ}E$ and quit for dinner with Fordyce #25
P.M.

We continue east

@ $117^{\circ} 32.70$ set Hub.

we continue to about $123^{\circ}00$ and quit for the night.

Over night with Slows.

Nov 26, 1914

Thanksgiving nobody works.

L. H. Dammer

Nov. 27, 1914. Cont. for Timothy Tarp.
A.M.

We continue east
to about 130 and quit
for dinner.

Dinner with Fordyce. 2.5
P.M.

Frank Boty joins us.
We continue east
to about 136-137 and
in the meantime
I look for the $\frac{1}{4}$ Bet.
13-14-138-29 where
U.S. notes call for.

W.P. 4 N 19° W 16 = 40.56 ft.

Asp. 14 S 7° E 24 = 15.84 ft.

I find a big W. P. with
the blaze very plain but
the B. T. has been destroyed
by the fires. This I take
for the N. W. B.T. from
which I set a 4" x 4" x 48"
Aspen Hub from the true
 $\frac{1}{4}$ Corner bet. 13-24-
138-29 with new

J. A. Honner

Nov. 27, 1914, Cont. for Timothy
P.M.

B.T. S. viz.

Asp. 6N 59° 55' E 34.85 ft. } with
" 55 30° 34' E 63.30 ft. } tacks.

I set Hub @ 131 + 59.70 E from
which the true $\frac{1}{4}$ Corner sets
south 532.30 ft. var. 8° 15'.

Quit for night with
Glovers.

Nov. 28, 1914. Cont for Timothy Sup.
A.M.

I start to correct back
but as this B.T. is not
very plain I decide to
call up Curo before I
go on further. I walk
to Nels Anderson I tried
and call up Curo but
was unable to find
him.

Quit for dinner with
Glovers.

J.H. Lanner.

Nov. 28, 1914. Can't find Timothy Sup
P. M.

I walk over to Charlie
Glovus place and try
to call up Curo and
after waiting there for
two hours central tells
me Curo is in the
country out of Hackensack
and he would not be
back in town until
night, so I go back
to S. Glover.

After supper I
call up Curo who
comes to Pine River
on freight train.

Curo tells me to
continue east to Twp.
line and then run
north and south and
establish all Sec. corners.

Over night @ Glover.

J. H. Conner.

Nov. 29, 1914. Cont. for Timothy Trwp.
 Sunday nobody works.

Nov. 30, 1914. Cont. for Timothy Trwp.
 Rained all day nobody works.

Dec. 1, 1914. Cont. for Timothy Trwp.
 A.M.

Leon Glover joins us.

We continue east from 132

@ 136 we enter a marsh
 and from here on the
 land is all marshy.

@ 150 we quit for dinner
 in the woods.

P.M.

We continue east

@ 158 we look for the
 Sec. Corner of Secs. 13-24-
 18-19 - 138-29 - 138-28

where U. S. notes call for

W.P. 20 N 32° E 20 = 1320 ft.

Fir 11 S 32° E 7 = 4.62 ft.

J. A. Danner.

Dec. 1, 1914. Cont. for Timothy Larp.
P.M.

W.P. 14 S 78° W 36 = 23.76 ft.

Maple 8 N $32\frac{1}{2}^{\circ}$ W 31 = 20.46 ft.

As we are unable to
find any of the old B.T.S.
here we quit for the
night.

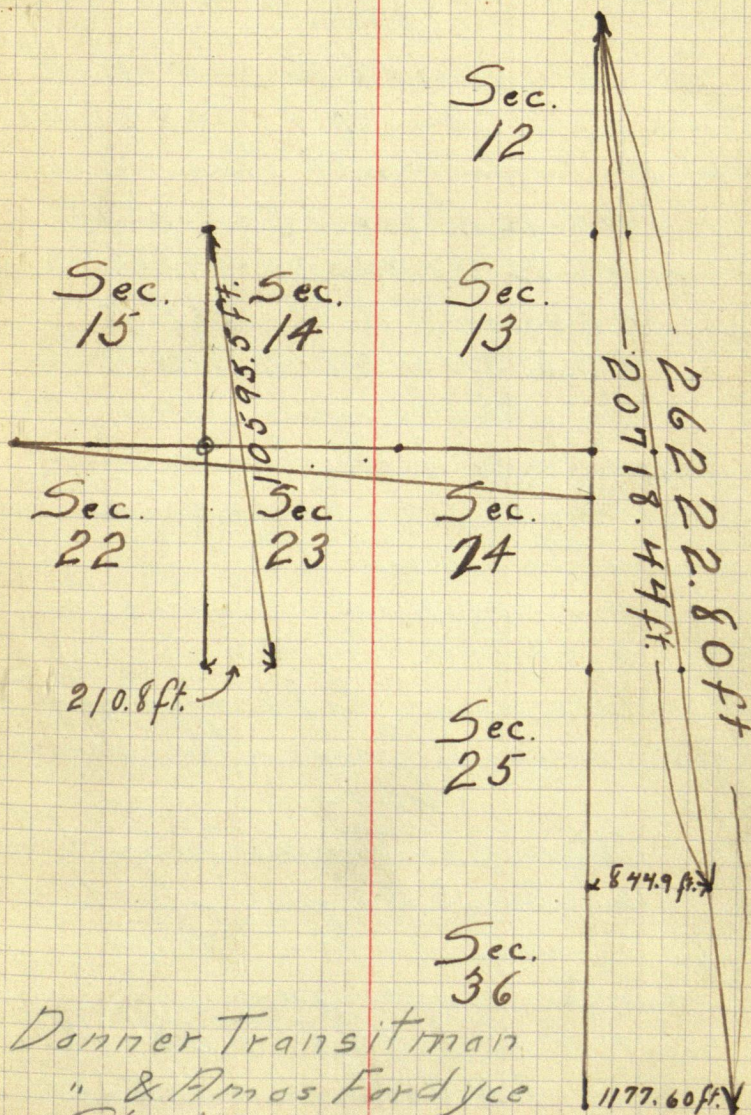
Over night with gloves.

For Time See Page 91.

F. A. Donner.

28 This page for Map. 99

138-29.



Danner Transitman.
" & Amos Fordyce
Chainmen.
J. A. Danner.

101

(29)

Dec. 2, 1914. Cont for Timothy Trup
A.M.

We walk to the N.E.
Corner of Sec. 12-13 8-29 where
U.S. notes call for veg.

W.P. 12 N 61° E 38 = 25.08 ft

W.P. 22 S 2° 31' E 35 = 25.08 ft.

W.P. 15 S 88° W 68 = 44.88 ft.

W.B. ch. 13 N 11° W 25 = 18.48 ft

As this corner was
previously set by me I
set over it and run
south var. 8°

@ 5 + 12.7 set Hub.

@ 13 + 43.4 " "

We run to 19 and quit
for dinner in the woods.
P.M.

We continue south.
@ about 26 we look for
1/4 Corner where U.S.
notes call for.

W. Birch 4 N 87° E 20 = 13.20 ft.

Y.P. 8 N 25° W 16 = 10.56 ft.

F.H. Downer

Dec. 2, 1914, Cont. Timothy Trp
P.M.

As we are unable to
find any of the old B. G. S.
here we continue south.

@ 26 + 50 enter slur.

@ 28 + 30 leave same

@ 30 enter meadow

@ 31 + 50 leave

@ 36 + 15 set Hwb.

@ 42 quit for night.

Over night with Grovers.

J. A. Donner.

103.

(31)

Dec. 3, 1914, Cont. for Timothy Trup.
A.M.

We continue south
@ 47+50 enter slew
@ 51+50 leave same
Quit for dinner in woods.
P.M.

@ 52 set Hawk.

We look for the S.E.
Corner of Sec. 12 - 135 = 29
where U. S. notes call for

Spurce. 8 N 66° E 12 = 7.92 ft

Asp. 12 S 89° E 12 = 7.92 ft

Tam 12 S 64° W 8 = 5.25 ft

Asp. 15 N 11° W 16 = 10.50 ft.

As we are unable to
find anything here we
continue south

@ 66 enter slew

@ 68+50 leave same
Quit for night. with Glover

J.H. Downer.

Dec. 4, 1914. Cont. for Timothy Twp
A.M.

We continue south

@ 78+50 set Hub

We look for the $\frac{1}{4}$ Corner
east of Sec. 13-138-29
where U.S. notes call for

Asp. 10 N 56° E 20 = 13.20 ft.

W. Birch 7 N 70° W 17 = 11.22 ft.

Quit for dinner in woods.

P.M.

As we are unable to find
anything here we continue
south

@ 79 enter swamp

@ 83 leave same

@ 93+50 set Hub

We run south to about 100
and quit for the night.

Over night with Glovers.

J. H. Donner

Dec. 5, 1914. Cont. for Timothy Trwp.
A.M.

We continue south to 1055 then we continue the east and west random line to an intersection of the north and south random line.

@ 1024 + 92.75 we intersect the east and west random line @ 164 + 76.4 E.

Quit for dinner in woods.
P.M.

As there are a great many big pine stumps standing we look for the N. E. Sec. Corner of Sec. 24-138-29 where U.S. notes call for.

W.P. 20 N 52° E 20 = 13.20 ft

W.P. 14 S 78° W 36 = 23.76 ft.

Fir 11 S 32° E 7 = 4.62 ft.

Maple 8 N 32 1/2° W 31 = 20.46 ft.

We are unable to find anything so we quit for night. Gloves,

Left Down.

1914
500

(34)

106

Dec. 6, 1914. Cont. for Timothy Trup.
Sunday all day.
Nobody works.

Dec. 7, 1914. Cont. for Timothy Trup.
A.M.

We continue south
@ 108 + 54.15 set Hub
Quit for dinner in woods.
P.M.

We continue south.
@ 114 enter tag alder swamp
@ 120 leave same
@ 123 + 37.85 set Hub
@ 126 + 50 enter tag alder swamp
@ 127 + 25 enter cranberry bog.
Quit for night.
Over night with Slocums.

J. A. Danner.

Dec. 8, 1914. Cont. for Timothy Ings.
A.M.

We continue south.

@ 138+50 leave cranberry bog.

@ 145+90.3 set Hub.

@ 158+60.5 ..

We look for the S.E.
corner of Sec. 24-138-29
where U.S. notes call for.

W. Ash 10 N 45° E 18 = 11.88 ft.

W. Birch 12 N 39° W 26 = 17.16 ft.

BK. Ash 6.5 49° E 27 = 17.82 ft.

Fir 6.5 48° W 31 = 20.46 ft.

As we are unable to find
anything here we quit
for dinner in woods.

P.M.

We continue south

@ 166 enter swamp

@ 167 leave same

@ 172+45.3 set Hub.

We look for $\frac{1}{4}$ Corner
on east side of Sec. 25-
138-29 but find the
U.S. notes do not give

F. A. Donner

Dec. 8, 1914. Cont. for Timothy Twp.
P.M.

any B.T.S. here so we
continue south.

@ 184 + 1.5 set Hub

@ 194 + 88.3 " "

We continue to 200 and
quit for night with Glovers.

Dec. 9, 1914. Cont. for Timothy Twp.
A.M.

We continue south

@ 211.20 we look for the
S. E. corner of Sec. 25 - 138 - 29
where U.S. notes call for.

W. Birch $5^{\circ}N 81^{\circ}E 28 = 18.48 \text{ ft.}$

W.P. $16^{\circ}N 37^{\circ}W 33 = 21.78 \text{ ft.}$

Asp. $125^{\circ}30'E 30 = 19.80 \text{ ft.}$

W.P. $245^{\circ}61'W 42 = 27.90 \text{ ft.}$

As we are unable to find
anything here we
continue south

@ 213 + 41.85 set Hub

@ 222 + 91.00 " "

Quit for dinner in woods.

Left Down

Dec. 9, 1914. Cont. for Timothy Twp.
P.M.

We continue south

@ 231 + 99.50 set Hub

@ 238 + 45.40 " "

@ 262 + 22.50 " "

Quit for night with Glouven.

Dec. 10, 1914. Cont. for Timothy Twp.
A.M.

We look for the S.E.
corner of Sec. 36 - 138-29
where U.S. notes call for.

Line 7 N 8° E 16 = 10.56 ft

W. Birch 75 50° E 13 = 8.56 ft

" " 85 43° W 20 = 13.20 "

Line 4 N 57° W 22 = 14.52 "

William King shows me
a pointed rock with a cross
cut on the top which he
says is the true Sec. Corner.
I get over this rock and
check on the old N. E. B. T.
which is plainly marked
but it does not check with
T. A. Donner.

Dec. 10, 1914, Cont for Timothy Trip.
A.M.

the ^{U.S.} notes which I have.
Quit for dinner with King.
P.M.

Using this rock as the
true S.E. corner of Sec. 36 -
138-29

@ 262+22.80 the true S.E.
corner of Sec. 36-138-29 set
west 1172.60 ft. var. 8°

Correcting back.

Hub @ 209+77.24 goes west 838.05 ft.
King says he saw a Birch
tree at this place two
years ago with the iron
marks very plain.

We look for Birch B.T.
and others but find they
are all blown down and
badly burnt.

We find a birch blown
down which King says
must be the old B.T.

Off Down

Dec. 10, 1914. Cont. for Timothy Twp.
P.M.

but as it is getting
late and dark I cannot
check from this stump
to see if we can find
any of the others.
Quit for night with flows.

Dec. 11, 1914. Cont. for Timothy Twp.
A.M.

We drive to the N.E. Cor.
of Sec. 36-138-29 where U.S.
notes call for

W. Birch 5 N 81° E 28 = 18.48 ft.

W.P. 16 N 32° W 33 = 21.78 "

" " 24 S 61° W 42 = 27.90 "

Asp. 12 S 30° E 30 = 19.80 "

Mr. Rufus Heath shows
me the S.W. W.P. stump
plainly marked from
which I set a 1" x 4" x 12"
gas pipe full length
in the ground for
T.H. Danner

Dec. 11, 1914. Cont. for Timothy Trup.
A.M.

the true N.E. Sec. corner
of Sec. 36-138-29 with
new B.T.S. vig.

Cross on rock $N 52^{\circ} 35' W = 72.0 \text{ ft.}$

" " " $N 83^{\circ} 8' E = 38.40 \text{ ft.}$

var. $7^{\circ} 30'$

@ 20718.445 the true N.E. Sec.
Corner of Sec. 36-138-29 sets
west 844.90 ft.

Quit for dinner in woods.

P.M.

Connecting back.

Hub. @ 15538.83 goes west 633.66 ft.
where I set a iron pin $8''$ long
full length in ground
for the true N.E. Sec. corner
of Sec. 25-138-29 with new
B.T.S. vig.

Cross on rock $N. 28^{\circ} 25' W = 103.50 \text{ ft.}$

" " " $N 42^{\circ} 45' E = 62.00 \text{ ft.}$

var. $7^{\circ} 30'$

Hub @ 10359.22 goes west 422.44 ft.
where I set a $2'' \times 2'' \times 18''$ Asp.

J.H. Downer.

Dec. 11, 1914. Cont. for Timothy Twp.
P.M.

Hub. for the true N.E.
Sec. corner of Sec. 24-138-29
with new B.T.S. viz.

Asp. $3 N 4^{\circ} 20' W = 10.60 \text{ ft.}$

" $5 S 87^{\circ} 7' E = 21.15 \text{ ft.}$

Cross on rock $S 19^{\circ} 48' W = 30.20 \text{ ft.}$

var. $7^{\circ} 30'$

Hub @ 5179.61 goes west 211.22 ft.
where I set a iron pin 8"
long full length in the
ground with new B.T.S. viz.

Asp. $4 N 20^{\circ} 31' W = 13.60 \text{ ft.}$

" $5 N 55^{\circ} 30' E = 57.11 \text{ ft.}$

" $3 S 50^{\circ} 20' E = 38.20 \text{ ft.}$

Birch $3 S 50^{\circ} 20' W = 10.70 \text{ ft.}$

var. $7^{\circ} 30'$

Quit for night with Gloves.

J. H. Dornier.

Dec. 12, 1914. Cont. for Timothy Twp.
A.M.

Starting @ the Sec. corner
of Secs. 10, - 11 - 14 - 15 - 138 - 29
where U.S. notes call for.

N.P. 25 N 68° E 17 = 11.22 ft.

N.P. 20 N 84° W 90 = 59.40 ft.

" 20 S 84° W 104 = 67.97 ft.

" 22 S 38° E 63 = 41.58 ft.

As this corner was previously
set by Curo I set up
over true corner and
run south var. 8° 15'

@ 1488.8 set Hub

@ 24438.3 set Hub

Quit for dinner with Glovers.
P.M.

Continue south

@ 40482.50 set Hub

@ 49 enter meadow

@ 51 leave same

Quit for night with Glovers.

W. Down.

Dec. 13, 1914.

Sunday all day.

Dec. 14, 1914, Cont. for Timothy Taps
A.M.

We continue south

@ 51 enter cranberry bog.

@ 53 + 23.855 we intersect
the east and west random
line @ 54 + 21.00 E

@ 56 enter open meadow

We run south to about
72 and quit for dinner
P.M.

We continue south.

@ 79 we look for the $\frac{1}{4}$
corner bet. Secs. 22-23-
135-29 where U.S. notes
call for viz.

Asp. 10 S 89° W 50

W.P. 36 N 87° E 29

As we are unable to
find anything here we
continue south

@ 92 + 42.90 ft set Hub.

J. H. Donner.

Dec. 14, 1914. Cont. for Timothy Twp.
P.M.

@ 104 + 87.30 set Hub quit
for the night with Glarus.

Dec. 15, 1914 Cont. for Timothy Twp.
A.M.

We continue south.
we look for the Sec.
corner of Secs. 22-23-26-27
- 138-29 where U.S. note
call for

Oak $12 N 31 E 14 = 9.24 \text{ ft.}$

" $12 N 59 W 15 = 9.90 \text{ ft.}$

" $15 S 43 W 35 = 23.10 \text{ ft.}$

Spr $18 S 33 E 25 = 16.50 \text{ ft.}$

We find a 2" x 2" stake
set by Cur for the
true corner.

From this stake I find
three old ^{Oak} stumps which
check with course and
distance.

@ 105 + 95.5 the true Sec.

J. H. Danner,

117.

(45)

Dec. 15, 1914. Cont. for Timothy Sup.
A.M.

corner of Secs. 22-23
- 26-26 - 138-29 sets west
210.80 ft.

Quit for dinner with Glover
P.M.

I wait for note
from Curo
Over night with Glover.

Dec. 16, 1914. Cont. for Timothy Sup.
Waiting

Dec. 17, 1914 Cont for Timothy Sup.
A.M.

Waiting
P.M.

Curo comes out from
Pine River with Bill
Moulster. we look over
notes and then go out
and set the sec. corner
of Secs. 14-15-22-23-138-29
by measurement.

J. J. Donner.

Dec. 17, 1914. Cont. for Timothy, Twp.
P.M.

Amos & Ben Fordyce help.
Ben Fordyce, Cyrus and I
walk to Charles Glovers
and call up the Town
clerk and try and have
a special meeting
tomorrow to pay for
the work done on the
survey and to see if
they want the other
two miles surveyed
and irons set where
corners have been
established.

Cyrus stays over night
with Glovers with me.

P.S. We decide to have
a meeting called Saturday
morning @ 9 o'clock.

J.H. Donner.

Dec. 18, 1914. Cont for Timothy Trp.
A.M.

Amos Fordyce, Ben Fordyce
and I start @ the Sec.
of Sec. 14-15-22-23-138-29
and correct back

@ 5357.80 E the true
Sec. corner sets north 25.10 ft.
Correcting back.

Hut @ 4013.90 goes north
18.83 ft. where I set a 10 ft.
Asp. pole full length
in marsh for the true
 $\frac{1}{16}$ corner.

Hut @ 2675.90 goes north
12.55 ft. where I set a 60'
spike for the true $\frac{1}{4}$
corner between Sec. 15-22
- 138-29 with new B.T. viz.
G. P. 10 N. $42^{\circ}35'E$ 263.30 ft
var. 8'

Hut @ 1337.95 goes north
6.27 ft. where I set a 60'
spike for the true $\frac{1}{16}$
corner.

G.P. Down.

Dec. 18, 1914, Cont for Timothy Inf.
A.M.

Quit for dinner with Glover.
P.M.

Make out time.

Dec 19/1914.

Ben Gordya, Walter William
and I drive over to town club
Mitchel to have a special
meeting.

We find that the judge
is sick and the chairman
is in town to see the
doctor. We call up the
chairman in town and ask
him to come out because
we wanted to get our
checks for God knows
everybody needs them
@ Xmas time.

Dinner with Mitchell \$2.50
P.M.

We wait for the chairman
J. A. Donner.

121

49

Dec. 19, 1914. for Timothy Twp.
P.M.

as we cannot have a
meeting without him.

About 3 o'clock we
drive to Pine River for
it is too late to have
a meeting.

Supper and over night
@ travelers hotel.

Dec. 20, 1914

Sunday all day.

J. A. Donner.

①

135-30
Home Brook Twp 1/22
Piquet

Monday-

Dec. 21, 1914. for Home Brook Twp.
P.M.

Curo and I @ Pine River
and try and settle with
Timothy Twp.
P.M.

I take freight train for
Piquet fare \$25

I call up L. C. Barnard
Town clerk of Home Brook
and he tells me to stay
@ the hotel over night
and he would make
arrangement to take me
out to his place in the
morning.

Over night @ hotel.

250

L. W. Downer.

123

135-30
Home Brook ②

"250

Dec. 22, 1914. Cont. for Home Brook
A.M.Ray Anderson takes me
out to Barnard's in auto.Look up field notes and
work to be done.

Dinner with Barnard.

P.M.

Leon Barnard and I walk
to the Sec. corner of Sec.8-9-16-17-135-30 where
U. S. notes call for

Maple 10 S 40° E 23 = 15.18 ft

Oak 7 N 50° E 18 = 11.88 "

" 5° N 68° W 27 = 17.82 "

" 6 S 25° W 10 = 6.61 "

We find a rock in the
road which Barnard says
was the true Sec. Cor.
and was put in the
place where B. Bartlett
had set a stake some
years ago and the old
B. T. S. were standing
at that time. I take
L. Danner.

Working for Home Brook Trip.

December

21 22 23 24 25 26 27 28 29

F.A. Donner

Expences

L.C. Barnard

Fred Butler

W.G. Schultz

1 1 1 1 0 1

75 130.25 25 0 0

0 1/2 1 1 0 1/2

0 0 1 0 0 0

0 0 1 0 1/2

250

③

Home Brook Trip 124
135-30

See page 136.

Dec.

23 24 25 26 27

3.00 2.00 1.00

W. Barnard & Team

January

11

2.00

F.A. Donner.

125

250

④

Home Brook
135-30Dec. 22, 1914. For Home Brook Truf.
P. H. I.

the required distances
but do not find any
old stumps or even
old roots.

We walk to the
Sec. Corner of Secs 7-8-
17-18-130-35 where
U. S. notes call for

Fir $145^{\circ}10'W$ 7 = 4.62 ft.

Spr. $55.78^{\circ}E$ 18 = 11.85 "

W.P. $7N70^{\circ}E$ 8 = 3.28 "

N.P. $12N46^{\circ}W$ 29 = 19.14 "

We find a old stake set
here but no B. T. S. or
stumps to hold this stake.

We walk to the N. E.
corner of Sec. 6-130-35
where U. S. notes ¹³⁵⁻³⁰ call for

Tam $6N20^{\circ}W$ 22 = 14.52 ft.

" $6541^{\circ}E$ 14 = 9.24 "

Spr $6N2^{\circ}E$ 19 = ^{12.54} 12.24 ft.

Fir $5S35^{\circ}W$ 16 = 10.56 ft.

We find some old trees

J. A. Downer.

250

5 Home Brook

135-30

136-30

126

Dec. 22, 1914. Home Brook Twp.
P.M.

that check out with notes
but they are all down
and as it is getting late
and only two of us so
we can't raise up the
blown down trees.

We quit for the night.
Over night with Barnards.

Dec. 23, 1914. Home Brook Twp.
A.M.

W. Barnard takes us over
to the N.E. corner of Sec. 6-135-
-30. We find the trees all
blown down and after much
hard work we manage
to get the trees back in
the natural place.

The N.W. & S.E. B.T.S. are
plainly marked from
which I set a iron pin
for the true N.E. Sec. corner
of Sec. 6-135-30.

J. J. Donner.

127 "250

© Home Brook Twp
135-30
136-30

Dec. 23, 1914, Cont for Home Brook Twp.
A.M.

with new B. I. S. sig.

Asp. 10 N 69° 2' W 80.05 ft. } with
Bal 85 6° 42' E 112.20 ft. } tacks.

var. 10°

Dinner with Isaac Gotsch.
P.M.

Starting from the tree
? N.E. corner of Sec. 6 - 135-30
we run N 89° 45' W.

var. 9°

@ 1448.3 set Hub.

We run to about 12 or 13
and quit for the night.

Over night with Barnards

JH Downer.

250

⑦

Home Brook.

135-30

136-30

128

Dec. 24, 1914. Cont. for Home Brook.
A.M.

We continue west

@ 9+2.7 set Hub.

@ 21 enter meadow

@ 26 leave meadow.

Quit for dinner with Lott. 25.
P.M.

Schultz joins us in A.M.

We continue west and look
for $\frac{1}{4}$ Sec. corner north of Sec.
6 - 135-30 where U.S. notes
call for.

Pine 45 83° E 31 = 20.46 ft.

Tam 10 N 60 W 93 = 61.35 ft.

As we are unable to find
anything here we continue
west ✓

@ 29 we quit chaining.

We continue west to about
38 and quit for the night.

Over night with Barnards.

J.H. Donner.

129 Home Brook ⑧

135-30
136-30

Dec. 25, 1914

250

Xmas all day
nobody works. Pretty cold.

Dec. 26, 1914, Cont. for Home Brook.
A.M.

We drive over to work
and leave team @ Sam's
Cabin.

We continue west with
line but a snow storm
comes up and we have
to quit.

Dinner with Barnards.
P.M.

As the storm is bad
we do not go to work.
I call up Liverman
Anderson and he comes
out and takes me to
Pequot. I leave outfit
@ Barnards.

Take freight to Brainerd.
Vacation.

Sh Downer.

⑨

Home Brook Twp 130
135-30

Next Page

250

Jan 9, 1915

I came to Pequot on 4:05 train. I call up Barnard and he tells me to stay @ Pequot until Sunday morning.

Hotel charges \$1.20

Jan 10, 1915

Ray Anderson takes me to Barnards.

Dinner with Barnards.

Over night with Barnards.

L. A. Donner.

131 Home Brook, ¹⁰ 135-30
Twp 1915 136-30

Jan. 11, 1915. Cont. for Home Brook.
A.M.

250 Leon Barnard and I
drive over to $\frac{1}{4}$ Corner
on the north side of Sec.
6 - 135-30 and continue west.
@ 33+38 set Hub
@ 49+80.50 " "
@ 54 we look for the
? \rightarrow N.E. ^{NW} Sec. corner of Sec. 6 -
135-30 where I find a
stake set for the true
corner.

I find all of the old
B.T. stumps badly burnt
from which I set a iron
pin 1" in dia. and 3 ft. long
full length in ground
by flat chain for the
true Sec. corner, with
new B.T. S. viz.

W. Oak 3 S $27^{\circ} 56' E$ 182.25 ft.

R. " say 14 S $71^{\circ} 30' W$ 91.70 ft

Oak stump 16 N $65^{\circ} 26' E$ 60.09 ft,

var. 9°

J. A. Donner.

135-30
136-30

⑩ warm & clear
Horne Brook Twp

132

11 250

Jan 11, 1915, Cont. for Horne Brook Twp.
Quit for dinner in woods.
P.M.

Jack and Sam Goble joins
us in A.M.

@ 5493.60 ft. west the true
Sec. corner sets north 23.20 ft.

Correcting back.

Hub @ ^{3971.28} 3471.13 goes north 16.76 ft
where I set a iron pin
3 ft. long full length in
the ground for the $\frac{1}{16}$ corner.

Hub @ ^{2647.52 OK.} 2664.09 goes north 11.18 ft
where I set a 3 ft. iron
pin full length in
ground for the true $\frac{1}{4}$
corner north of Sec. 6 -

135-30

Hub @ ^{1323.76 OK. cur} 1332.04 goes north 5.59 ft.
where I set a 3 ft. iron pin
for the true $\frac{1}{16}$ corner.

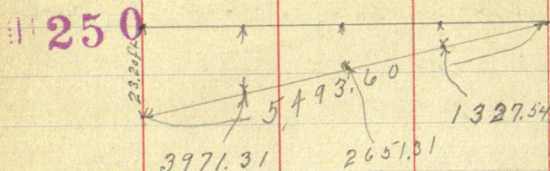
I set a 3 ft. iron pin two
ft. in ground for the true
N. E. corner of Sec. 6-135-30.
Quit for the night.

J. A. Lanner.

[50028484]

[50042231 N]

133 Home Brook (12) 135-30
Map. 136-30



Sec. 6.

135-30

Sec 5

135-30

Jan. 12, 1915 Continue for Home Brook
P.M.

Frank Rebnann joins us.
Starting from a rock in
the road for the true
Sec. corner of Secs. 5-9-
16-17-135-30 we run
north $89^{\circ}45'N$

var. $10^{\circ}30'$

@28+25 enter meadow

@31+85 cross 3 ft. ditch.

@33 leave meadow

@47+48.70 set Hub.

We look for the Sec.
corner of Secs. 7-8-17-18
-135-30 where U. S. notes
call for

Bal. $145^{\circ}10'W$

Spr. $55^{\circ}78'E$

J. H. Lounsbury

135-30
Home Brook Twp

13 warm

134

Jan. 12, 1915 Cont. for Home Brook.
A.M.

W. P. 7 N 70 E T

250

N. P 12 N 46 W 29

As we are unable to find
any of the old B.T.S. we
quit for dinner with Barnards.
P.M.

Do not work try and call
up Curo but cannot locate
him.

Over night with Barnards.

Jan 13, 1915 Cont Home Brook.
A.M.

Call up Curo but
cannot locate him.
I walk over to M. L. S. place
and have a talk
with him.

I decide to continue line
west to town line
P.M.

Leon Barnard, Frank Rehman,
Will Goltz, Lee Goltz and I
H. A. Hanner.

135

135-30 (14)
Horn Brook Top

windy 250

Jan 13, 1915 Cont. for Horn Brook
P. M.

Continue line west

@ 56 enter Bal. swamp.

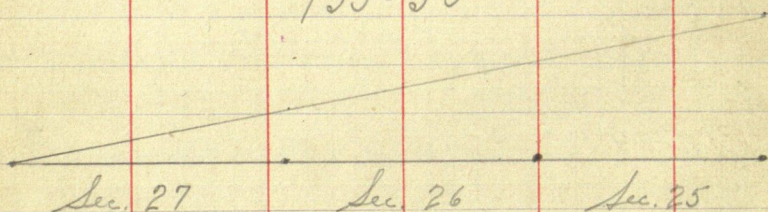
@ 60 + 25.70 set Hub.

@ 71 + 3.60 set Hub

@ 86 + 26.90 " "

Quit for the night with
Barnard.

135-30



J. A. Donner.

Working for Home Brook Twp.

250

(15)

Home Brook
135-29-30

136

	January 1915											
	9	10	11	12	13	14	15	16	17	18	19	20
F. A. Danner	0	0	1	1/2	1/2	1	1	1	1	1	1	1
Leon Barnard	0	0	1	1/2	1/2	1						
Frank Rebmann	0	0	0	1/2	1/2	1						
Wm Goble	0	0	0	0	1/2	1						
Lee Goble	0	0	0	0	1/2	1/2						
J. Goble	0	0	1	0	0	0						
Sam Goble	0	0	1	0	0	0						
Expences	1.20	0	0	0	0	1.20	0	0	0	1.25	1.25	1.65
Albert Brecht	0	0	0	0	0	0	0	1/2	0	1	1	1
F. Taholski	0	0	0	0	0	0	0	0	0	1	1	1
Joe "	0	0	0	0	0	0	0	0	0	1	1	0
Wm Schultz	0	0	0	0	0	0	0	1/2	0	1	1	0

J. A. Danner.

127 Home Brook ①6
Twp.

135-30

135-31

Jan. 14, 1915 Cont. for Home Brook.
A.M.

250

We continue west

@ 92 enter swamp

@ 94 + 492 set Hub.

Quit for dinner with Rebmam^{2.5}
P.M.

Continue west.

@ 100 leave swamp

@ 103 + 50 set Hub

@ 110

"

"

We look for the S.W.
Sec. corner of Sec. 7-135-30

when U.S. notes call for

Bk. Oak 85 19 W 36

Asp 10 N 52 W 58

Birch 65 82½ E 14

"

7 N 85 E 11

We are unable to find
any of the old B. & S.
here so we quit for
the night with Barnard.

J. A. Donner.

135-30

① Home Brook
windy. Temp 138

250

Jan. 15, 1915. Cont for Home Brook.

Can't get a crew so I stay
@ Barnards all day.

Jan. 16, 1915. Cont for Home Brook Temp.
A.M.

I go over and talk with
Meikle (one of the supervisors)
and he says Schultz told
him yesterday he would
have a crew ready for me
today.

Leon Barnard takes me
and outfit over to Schultz's
place and we get ready to
start work in the P.M.

Dinner with Schultz.

P.M.

W^m Schultz, A. Bracht and I
walk to the sec. corner of
Secs. 21-22-27-28-135-30 where
we find a 4" post set by
Moulton for the true Sec. Cor.

I run East var. $9^{\circ}30'$

J. H.anner.

139

250

clear & cold ⑧

Home Brook Twp
135-80

Jan 16, 1915. Cont for Home Brook.
P.M.

@ 6+40 cross 15 ft. creek

@ 8+97 set Hub.

@ 52+91.80 set Hub.

Quit for the night.
Over night with Schultz.

Jan 17, 1915

Sunday all day.

Jan 18, 1915. Cont for Home Brook.
A.M.

J. Tacholsky and Joe Tacholsky
join us.

We continue east

@ 53 enter old lam swamp

@ 64 leave "

Quit for dinner with Schultz.

P.M.

Continue east

@ 77+10.20 set Hub.

@ 101+601 " "

@ 115 enter old swamp

Quit for night with Schultz.

J. A. Donner.

snowing & blowing.
Horn Brook Trip (17)

135-30
135-29

140

Jan 19, 1915 Cont. for Horn Brook.
Conn.

250

We continue east.

@ 119+50 leave swamp

@ 124+50.1 set Hub

@ 142+93.1 ¹³⁴⁺⁵⁰ cross ^{over} Handle Creek 3 ft.

Quit for dinner with
for Gaholsky. 2:25
P.M.

Continue east.

@ 154+38 set Hub

We look for the true S.E.
corner of the S.E. corner of Sec.
24-135-30 where U.S. notes call for.

$W.P. 85^{\circ} 72\frac{1}{4}' W 176 = 116.16 \text{ ft.}$

$Asp. 12^{\circ} N 11\frac{1}{2}' E 260 = 171.60 "$

$Spr. 14^{\circ} N 22\frac{1}{4}' W 240 = 158.40 "$

We find the S.W. B.T. plainly
marked but blown over.

We start to work @ it to
get it back in its original
place but as we haven't any
tools with us for this
work we quit for the
night with Schultz.

J.H. Houser.

141

clear & cold (20)

135-29
135-30

Home Brook Turp

Jan. 20, 1915. Cont. for Home Brook
A.M.250 We spend all day in
trying to put the old
B.T. stump back in its
original place.250¹ Dinner with J. Scholsky.²⁵Jan. 21, 1915 Cont. for Home Brook.
A.M.We get old B.T. stump
back in its original position
from which I set the
true S.E. Sec. corner of Sec.
24-135-30 with new
B.T. vig.

J.P. 145° 31' 56" E = 115.95 ft

Cor. Fence Post S 32° 3' W 35.35 ft

Asp. 5° N 37° 35' E = 66.15 ft

(with ticks.) bar 8° 45'

@ 158 + 63.70 the true S.E.
Corner of Sec. 24-135-30
sets south 411.50 ft.

J.A. Hanner.

Home Brook
Temp

10259⁴3
(21)

135-30

142

Jan 21, 1915 Cont. for Home Brook
A.M.

Correcting back

250

Hub @ 14293.1 goes south 370.62⁷⁶⁷ ft.

" @ 12450.1 " " 322.83⁸⁶ ft.

" " 10160.1 " " 263.44⁵⁵ ft.

Quit for dinner with Schultz.
P.M.

Correcting back.

Hub @ 7710.20 goes south 792.92^{200.08} ft.

" @ 5291.80 " (137.27) 138.11 ft.

" " 897.00 " (23.27) 23.25 ft.

Quit for the night with Schultz.

J. A. Danner

143/ 135-30
134-30

(22) Home Brook

40 below

Jan 22, 1915, Cont. for Home Brook.
P.M.

250 We on Schults, A. Buecht and
I drive to the Sec. corner
of Secs. 26, 27, 34, 35 - 135-30
we look for the B.T.S. here
but find they are all gone.
We drive to the $\frac{1}{4}$ Corner
bet. 34-35-135-30 as this
corner falls in lake we
look for the W.C. 1355S
but we find old the old
B.T.S. are gone.

We drive to the Twp.
line @ S.W. corner of Sec.
35-135-30 We find a
half inch iron pin here
sticking up about 8 inches
but we do not find
anything of the old B.T.S.
or new ones that might
of been put there.

Quit for dinner with Schults

J.A. Donner.

Walker-Wilkinson (23)

Home Brook
135-29-30

144

Jan. 22, 1915. Cont. for Home Brook
P.M.

We drive over to Wm
Barnard and call a meeting.
I get my check and call
Ray Anderson from Pequot
to come out and get me.

Supper @ the Tanager
Hotel. Hotel Bill \$.85

I take 1.25 train for Walker.
R.R. fare \$.80

Jan. 23, 1915

250

Work in office all day.

Jan. 24, 1915.

Sunday all day.

Jan. 25, 1915

Work in office all day.

Jan. 26, 1915

Work in office all day.

Take 6.15 train for Wilkinon
to see Curo.

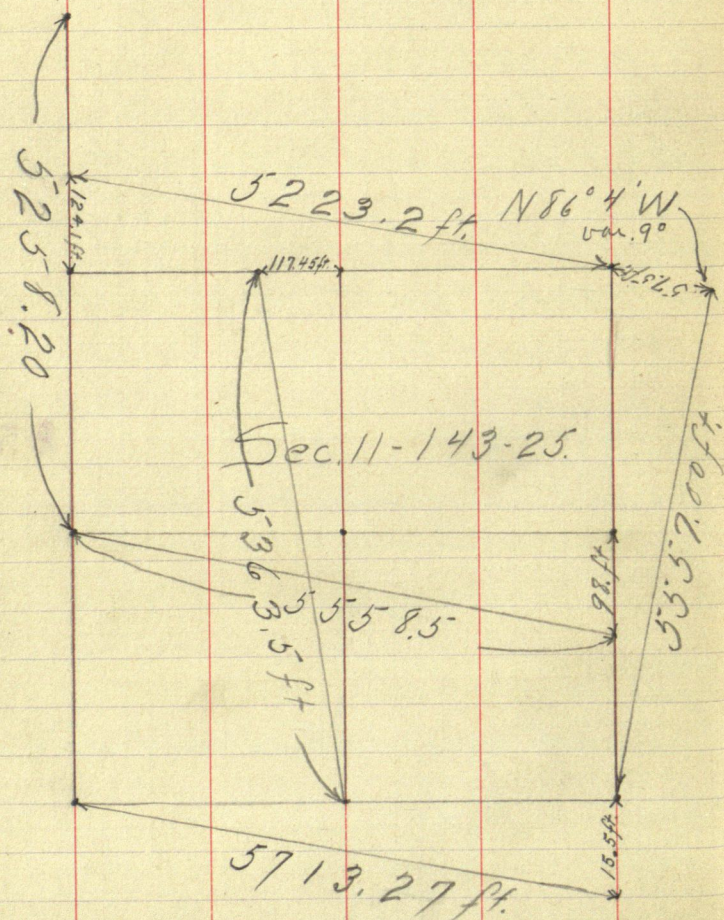
Over night with Curo.

L. A. L. owner.

145

① 11-143-25

Map of Section 11.
 Twp. 143 Rge 25.
 See pgs. 19 & 36.



Donner Transitman
 " & Kirt Chainmen.

Homebrook Twp 135-30

At the request of the town board of Homebrook Twp. we prepare to survey 5 miles of road in 135-30. Greene and Jude leave Walker in Ford

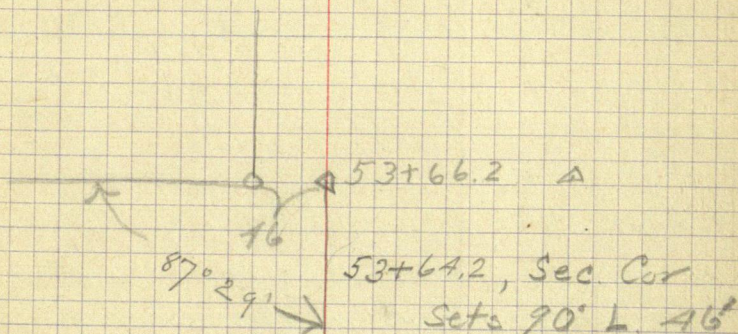
Mon. Morning Sept. 24, 1923

We go to Barnards and he directs us to Wm. Wilson who lives in Sec. 5. We make arrangements to board with Wilson's and Mr. Wilson agrees to work with us. After dinner we run random from I.M. N.E. Cor. Sec. 6 south. Find stake for cor. 5-6-7-8. Kick into line and brush out true line setting pickets.

Sept. 24, 23

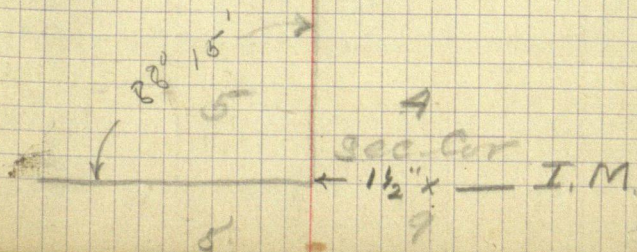
148

Sept. 24-25-26-27
Oct. 3-4



53+64.2

13+20 Set grub
13+17.8 old hole



N. & S. Random line between Sec. 7

Arrive at Wilson's 10:30 P.M.

comp. Wilson & Jude Start at

190 to Peguet and find notes

Get back to work 9:15 A.M.

Line between Sec. 5 & 6

$$\begin{array}{r} 83.4 \sqrt{5487.3} \\ \underline{5004} \end{array}$$

$$\begin{array}{r} 4833 \\ 4170 \\ \underline{6630} \\ 5838 \\ \underline{7920} \\ 7506 \\ \underline{4140} \end{array}$$

$$\begin{array}{r} 26.60 \\ 6 \\ \hline 5196 \\ 5196 \\ \hline 57156 \\ 5280 \\ \hline 10895.6 \end{array}$$

$$\begin{array}{r} 65.795 \\ 65.795 \\ \hline 20 \\ \hline 1315.90 \end{array}$$

$$\begin{array}{r} 65795 \\ \hline 234 \\ \hline 263180 \\ 197385 \\ \hline 131590 \\ \hline 15396030 \\ \hline 1315.9 \end{array}$$

$$\begin{array}{r} 2855.5 \\ \hline 1315.9 \\ \hline 4171.4 \\ \hline 1315.9 \\ \hline 5487.3 \end{array}$$

$$\begin{array}{r} 7108.6 \\ 5280 \\ \hline 1823.6 \\ \hline 1584 \end{array}$$

$$\begin{array}{r} 1320 \\ 264 \\ \hline 1584 \end{array}$$

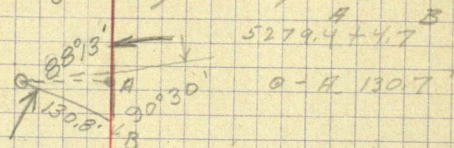
Oct. 3. 1923
Greene-Transit
Jude - Chain
Wilson - Axe H.E. Hartman - Axe

150

3 135-30 and True line between 5-6

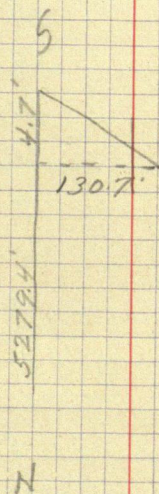
Find that my notes have not
Town line and chain south
in P.O.

Hartman is just getting to work



Total length = 5487.3' = 23.40

Hub.	13.20	-	1539.6	219.6
	26.40	-	2855.5	215.5
	39.60	-	4171.4	211.4
	52.80	-	5487.3	207.3



Between 6-7

Sta 0 Cor 13.1' N. to Cor.

	6+37	2035	3.4'
	8+56	1816	11
	12+106.5'	1466	5.2
1335.8	13+20 Temp.	1161335.8	7.2
	14+77	1192	9.3
	17+13'	959	12.9
	18+80'	792	15.5
	20+95'	577	18.7
	4.6 22+17'	455	20.5
339.6	23+32'	340	22.3
105.6	25+66'	106	24.9'

26+71.6 ⁷² 1/4 Cor. 27.5' S. to Cor

⁹	2878.4	0+53.6		2878.4	²⁹ 24.8'
		2+16'		2762.4	25.3
		3+58'	62	2620.4	23.9
⁴		3+94'		2484.4	23.6
		6+84		2194.4	20.8
		8+83'		1995.4	18.0
		11+60'		1718.4	16.3
		¹² 12+58.3	16.20.1	1574.4	14.9
		13+04			
	13+20	Temp Cor,	15	58.4	14.6
	16+98		11	80.4	11.2
	19+92'	New B.T.s	8	86.4	8.4
	20+84'	Bl. Oak	12"	213.57	94.4
	23+01	W. Pine	15"	24.05	77.4
	25+09	W. "	12"	99.7	3+69.4
		Peb.	4"	89.4"	3.5

April 3, 1923
April 4, 1923

Homebrook Twp. 135-30

Apr. 3 Lv. Walker 9 o'clock. H.A. Cater.

goes along as far as Pine River.

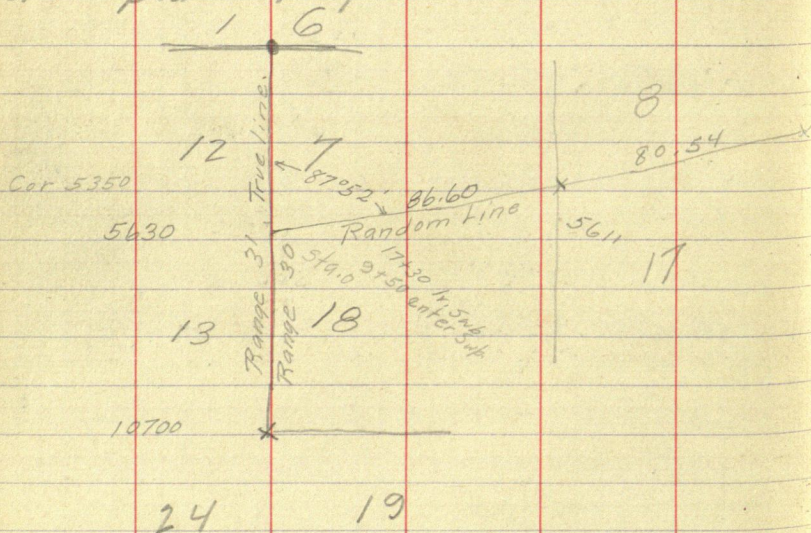
Eat dinner and go to Homebrook.

Go to Karthals and get Town notes,

and then go to Wilsons J. M. Guener.

Apr. 4.

Go to Cor. S.W. Sec. 6 on
Range line and rough chain south-
107+00' to 1.M. Cor to 13-24-18-27
and place flag.



Go back to high point between
Cors and kick into line.

Continue Donners Random
line between 7-18 to intersection

$$\begin{array}{r} 13.1 \\ 27.5 \\ \hline 40.6 \end{array}$$

$$\begin{array}{r} 1.52 \\ 2671.6 \\ \hline 406000 \\ 26716 \\ \hline 138840 \\ 133580 \\ \hline 52600 \end{array}$$

leave flag.

$$\begin{array}{r} 233 \\ 152 \\ \hline 4664 \\ 11660 \\ 2332 \\ \hline 354464 \\ 131 \\ \hline 223 \end{array}$$

$$\begin{array}{r} 2566 \\ 152 \\ \hline 5132 \\ 12830 \\ \hline 2566 \\ 390032 \\ 13.1 \\ \hline 259 \end{array}$$

$$\begin{array}{r} 26.60 \\ 6 \\ \hline 1596 \\ 1370 \\ \hline 1755.6 \\ 1370 \\ \hline 3075.6 \\ 2640.0 \\ \hline 5715.6 \end{array}$$

$$\begin{array}{r} 2217 \\ 152 \\ \hline 4434 \\ 11085 \\ \hline 2217 \\ 336984 \\ 13.1 \\ \hline 205 \end{array}$$

$$\begin{array}{r} 2662.4 \\ 95 \\ \hline 133120 \\ 239616 \\ \hline 2529280 \end{array}$$

$$\begin{array}{r} 1713 \\ 152 \\ \hline 3426 \\ 8565 \\ \hline 1713 \\ 260376 \\ 13.1 \\ \hline 12.9 \end{array}$$

$$\begin{array}{r} 6.37 \\ 152 \\ \hline 1274 \\ 3185 \\ \hline 637 \\ 96824 \\ \hline 13.1 \\ \hline 3.4 \end{array}$$

$$\begin{array}{r} 188 \\ 152 \\ \hline 376 \\ 940 \\ \hline 188 \\ 28576 \\ 13.1 \\ \hline 15.5 \end{array}$$

$$\begin{array}{r} 2095 \\ 152 \\ \hline 4190 \\ 10465 \\ 2095 \\ \hline 318340 \\ 13.1 \\ \hline 187 \end{array}$$

$$\begin{array}{r} 856 \\ 152 \\ \hline 1712 \\ 4280 \\ \hline 856 \\ 130112 \\ 13.1 \\ \hline 13.1 \end{array}$$

$$\begin{array}{r} 1477 \\ 152 \\ \hline 2954 \\ 7385 \\ \hline 1477 \\ 224504 \\ 13.1 \\ \hline 93 \end{array}$$

$$\begin{array}{r} 1206 \\ 152 \\ \hline 2412 \\ 6030 \\ \hline 1206 \\ 183312 \\ 13 \end{array}$$

$$\begin{array}{r} 20.3 \\ 13.1 \\ \hline 7.2 \end{array}$$

$$\begin{array}{r} 5280 \\ 350 \\ \hline 5630 \end{array}$$

Intersect at Sta. 56+30
N.E. \angle 87°52'± and chain
East to Sta. 56+11 - Hub -
Random. Homebrook Twp.
used this random cor. for
true cor and built one mile
of road between 8-17 on
this line.

Crew - Wm Wilson

Clifford Wilson

John M. Green

John M. Green

April 5-1924

Chained from S.E. Cor. Sec. 8 west
to Random Cor. Dis. 5283'

5283	80.54	5249.6
5611	86.60	5644.6
<u>10894</u>	<u>167.14</u>	<u>10894.2</u>

Cor. should be east 33.5'

65.18
80.54

65.18

26072

167.14/10894

100284

86560

83570

29900

16714

131860

133722

5644.6

56.11

33.6

5203

5249.6

33.4

32590

521440

5249.5972

65.18

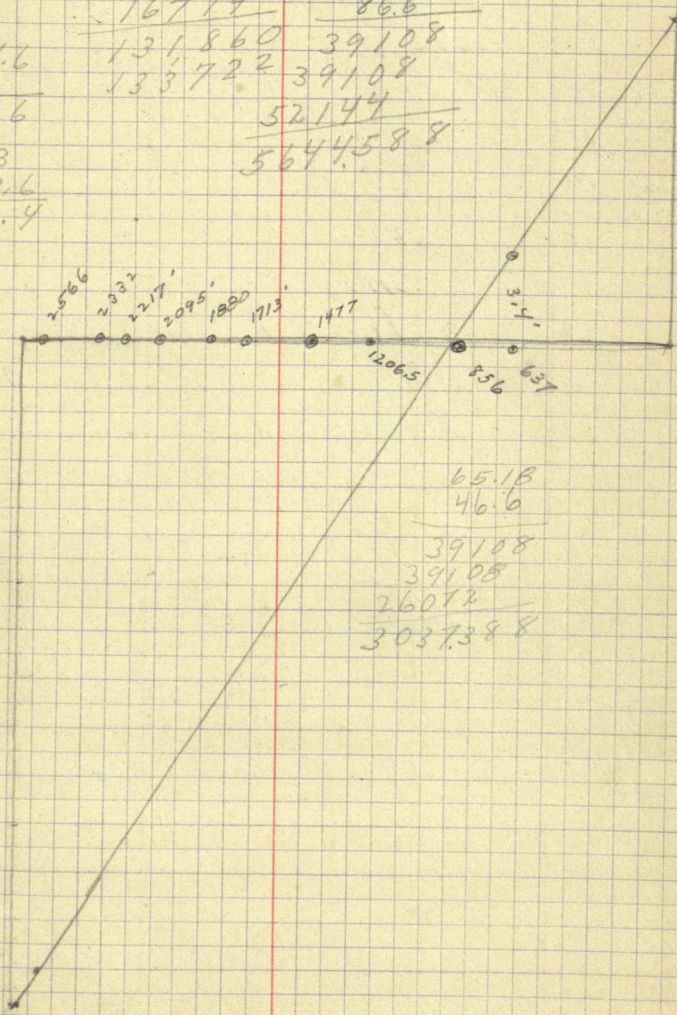
86.6

39108

39108

52144

5641588



65.18
46.6

39108

39108

26072

3037388

Line between 7-8-

Offset	Sta.	0 = 130.7 - 33.5 = 97.2	
13+20 - 72.9	1 -		1.84 93.36
14 - 71.42	2 -		1.84 93.52
15 - 69.58	3 -		1.84 91.68
16 - 67.74	4 -		1.84 89.84
17 - 65.90	5 -		1.84 88.00
18 - 64.06	6 -		1.84 86.16
19 - 62.22	7 -		1.84 84.32
20 - 60.38	8 -		1.84 82.48
21 - 58.54	9 -		1.84 80.64
22 - 56.70	10 -		1.84 78.80
23 - 54.86	11 -		1.84 76.96
24 - 53.02	12 -		1.84 75.12
25 - 51.18	13 -		1.84 73.28
26 - 49.34	13+20 - 72.9		1.84 72.89
26+40 - 48.60			

24.3

5280

184

9720

5280

44400

42240

21600

21120

158

1.472

.736 .368

4

15.6

$$\begin{array}{r} 11.8 \\ \hline 590 \end{array}$$

11.2

8.86

44

8.4

7.9

5.8

3.7

.9

2520.4

95

126020

226836

2374380

2484.4

95

124220

223596

236

2194.4

95

109720

197496

2084680

3694

95

18470

33246

3.5

1995.4

95

99770

19.95

9.9

18.0

1718.4

5

85920

17.18

.85

16.33

1574.4

5

.80

15.7

5

14.9

156

5

.780

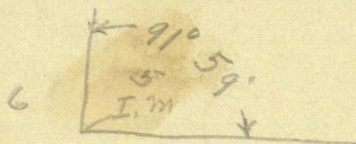
23.20 ft.
5-4 + 93.60 ft.

225
40
90.00
75.0
6

9 52 27
13 06.75

5° 00' Var.

Dint 1.00 ft to S. of I.M.



$\frac{1}{4}$ Cor. 1° 12' L.

230

5258.2

2629.1

7288.1

7202.8

10290.36.2

@ 35 have stump

482

@ 36 + 65.2 at H. d.

5251.80

@ 38 51.80 the two column set N. 25.10 ft

@ 26 75.40

12.55 ft

J.O. 10N, B.J. N 42°35' E 263.30

@ 9 + 2.7 at H. d.

@ 21 in the meadow

@ 26 level

@

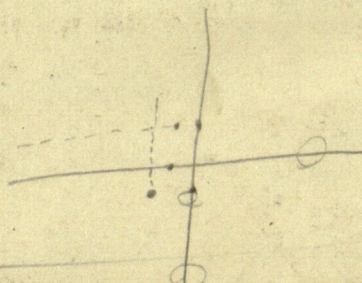
N. B. J. S.

W. Co K 35. 27°56' E = 152.25 ft.

R. Co K. Snag " S. 71°30' W. = 91.70 ft.

O. K. stump. 16 N 65°26' E = 60.09 ft.

var 9°



Alberta Canada.

Warrington

J. M. A.

Bx 473

Grand Rapids.

DISTANCES FROM CENTER OF ROADWAY FOR CROSS-SECTIONING.

ROADWAY 14 FEET WIDE. SIDE SLOPES $1\frac{1}{2}$ TO 1.

FOR SINGLE TRACK EMBANKMENT.

Tri. 2269. 51 Paul.

	0	.1	.2	.3	.4	.5	.6	.7	.8	.9	
0	7.0	7.2	7.3	7.5	7.6	7.8	7.9	8.1	8.2	8.4	0
1	8.5	8.7	8.8	9.0	9.1	9.3	9.4	9.6	9.7	9.9	1
2	10.0	10.2	10.3	10.5	10.6	10.8	10.9	11.1	11.2	11.4	2
3	11.5	11.7	11.8	12.0	12.1	12.3	12.4	12.6	12.7	12.9	3
4	13.0	13.2	13.3	13.5	13.6	13.8	13.9	14.1	14.2	14.4	4
5	14.5	14.7	14.8	15.0	15.1	15.3	15.4	15.6	15.7	15.9	5
6	16.0	16.2	16.3	16.5	16.6	16.8	16.9	17.1	17.2	17.4	6
7	17.5	17.7	17.8	18.0	18.1	18.3	18.4	18.6	18.7	18.9	7
8	19.0	19.2	19.3	19.5	19.6	19.8	19.9	20.1	20.2	20.4	8
9	20.5	20.7	20.8	21.0	21.1	21.3	21.4	21.6	21.7	21.9	9
10	22.0	22.2	22.3	22.5	22.6	22.8	22.9	23.1	23.2	23.4	10
11	23.5	23.7	23.8	24.0	24.1	24.3	24.4	24.6	24.7	24.9	11
12	25.0	25.2	25.3	25.5	25.6	25.8	25.9	26.1	26.2	26.4	12
13	26.5	26.7	26.8	27.0	27.1	27.3	27.4	27.6	27.7	27.9	13
14	28.0	28.2	28.3	28.5	28.6	28.8	28.9	29.1	29.2	29.4	14
15	29.5	29.7	29.8	30.0	30.1	30.3	30.4	30.6	30.7	30.9	15
16	31.0	31.2	31.3	31.5	31.6	31.8	31.9	32.1	32.2	32.4	16
17	32.5	32.7	32.8	33.0	33.1	33.3	33.4	33.6	33.7	33.9	17
18	34.0	34.2	34.3	34.5	34.6	34.8	34.9	35.1	35.2	35.4	18
19	35.5	35.7	35.8	36.0	36.1	36.3	36.4	36.6	36.7	36.9	19
20	37.0	37.2	37.3	37.5	37.6	37.8	37.9	38.1	38.2	38.4	20
21	38.5	38.7	38.8	39.0	39.1	39.3	39.4	39.6	39.7	39.9	21
22	40.0	40.2	40.3	40.5	40.6	40.8	40.9	41.1	41.2	41.4	22
23	41.5	41.7	41.8	42.0	42.1	42.3	42.4	42.6	42.7	42.9	23
24	43.0	43.2	43.3	43.5	43.6	43.8	43.9	44.1	44.2	44.4	24
25	44.5	44.7	44.8	45.0	45.1	45.3	45.4	45.6	45.7	45.9	25
26	46.0	46.2	46.3	46.5	46.6	46.8	46.9	47.1	47.2	47.4	26
27	47.5	47.7	47.8	48.0	48.1	48.3	48.4	48.6	48.7	48.9	27
28	49.0	49.2	49.3	49.5	49.6	49.8	49.9	50.1	50.2	50.4	28
29	50.5	50.7	50.8	51.0	51.1	51.3	51.4	51.6	51.7	51.9	29
30	52.0	52.2	52.3	52.5	52.6	52.8	52.9	53.1	53.2	53.4	30
31	53.5	53.7	53.8	54.0	54.1	54.3	54.4	54.6	54.7	54.9	31
32	55.0	55.2	55.3	55.5	55.6	55.8	55.9	56.1	56.2	56.4	32
33	56.5	56.7	56.8	57.0	57.1	57.3	57.4	57.6	57.7	57.9	33
34	58.0	58.2	58.3	58.5	58.6	58.8	58.9	59.1	59.2	59.4	34
35	59.5	59.7	59.8	60.0	60.1	60.3	60.4	60.6	60.7	60.9	35
36	61.0	61.2	61.3	61.5	61.6	61.8	61.9	62.1	62.2	62.4	36

Calculated by Julien A. Hall, M. Am. Soc. C. E.

MADE IN GERMANY.