

CURIO

85

LEVEL BOOK.

No. 413.

July 29-08
To

1000.00
18.40
981.40

@ 981.40 To ch. 4" sling
14.50 Hw
24 37.40 T. 6-

@ 2640 Hw
Hw 8 23° 32' E 23.91
Hw 8 25° 10' 39.68
Hw 8 55° 56' W 42.55
To ch 10 41° 30' W 15.74

(85)

6.7
5.262
5.322
(5.310.2)

5.5
12.2
2.2

5.261.9
5.262.6
5.262.5
5.262.1
47.835
47.835
79.98
86.66

2.8
12.528

Contents

Deerfield 161-175	
Cass Co. Deerfield 187-31.	Pages 176 to 181
Wills & Litchey HP Simont	182-184
Cass Co. Deerfield 187-31.	185-190
Cass Lake Harding & Addons	191-192
Backus O.A. Miller	193-194
HP Simont	195-196
Deerfield 139-31	197-209
Pine River Tap 138-29.	213.
Beals & Buford	139-28. 214. 219
Walden 137-30	232-274
O. O. Haugey & Co	249-274
Judicial Highway Jenkins	274-279.
El. Forbes Lewis	137-30 281
G. Mann	282-
Webster and Hill	36-138-30- 284-294
Pine River Tap	138-30. 294-294
Deerfield Cass Co	138-31. 295-308
Deerfield 139-31	Page 309 to 311

2646
 2646
 2646
 2646
 2646

2646
 2646
 2646

Contents

Backus -

Deerfield 139-31

Cass Co 137-31

Beals -

Walden

Hogyard ¹³⁷⁻²⁹ 136-31

Judicial Can & Climbing Co

Webster & Hill 138-3d

Quam Walker

P.R. Twp

162

①

Bockus

189-30-31

July 29-08

Deerfield

I worked in the streets of Bockus today selling stone monuments with Arthur Falk but as I am entitled to pay for "one day coming" I am going to charge my day up to Deerfield Twp because I was ready to go out to Deerfield when Mr John Luiten arrived and wanted me to wait for him to go back and he would allow me my time the same as tho I worked.

I spent an hour so writing up a road petition for road through Powers and Deerfield Twp. over the old R.R. grade.

Luiten is circulating the petition I loaned Luiten one dollar.

Over night with Frank Thompson at Bockus or rather looked out at Thompsons and had to stay with Charley Rice.

Got in one day for Deerfield.

Jas Carley left Kabikona for Amerson Wis with Mrs. & whole family.

(2)
139-31.

163

Deerfield

July 30-08 Thursday

Jahm Luiten and I took
dinner with Frank Thompson @ Janvies
Hall at Bochar and after I paid
\$1.00 to his account we left for Deer-
field arrived at Luiten's house on
Lot 2, Sec 17-139-31 at 5 P.M. with
Hiram Vanepps livery team.

I made out Van's bill for \$5.00 for
a team with Luiten in A.M. circul-
ating a road petition north of Bochar
and a team to bring us out to
Luiten. The bill reads as follows:
Twp of Deerfield to W. A. Vanepps.

July 29-08	Team on road	250
" 30 "	" " "	250
		500

I hereby certify that the above account
is just and true and that no
part thereof has been paid.
W. A. Vanepps.

After supper Luiten and I went
to the $\frac{1}{4}$ port between Sec 16 & 17
139-31 where we found both Beasing
trees. Gout holes call for R. to C. at $\frac{1}{4}$.
BP 8 N 58 E 6 lks =
WP 7 N 83 W 18 lks =
both are standing plainly marked but
dead.

At Meander Port N 9. bet Secs 16-17
on south end of Goose Lake Gout holes
call for Rock 2 X 2 X 1. S 39 E 8 lks
aspen 8 S 50 W 6 l. lks.

both are gone. We walked N & W a
mile and looked at Beasing trees.
Over night with Luiten. I got in
day N 2. for Deerfield Twp.

164

③
139-31

Leefield Twp.

July 31-08.

^{Henry}
John Luiten Chairman Town Board
Gerhard ("Gert") Luiten son of old
man. Arthur Halder Clerk of
Town Board and son-in-law of old
man Luiten. worked all day on survey
of roads.

Andrew V. Harker one of the
Trustees of the Board was to have been
here but he did not come.

John Haney another of the Town Board is
in Lakota but wanted to be here.

Hans Groel (Hans G-r-o-e-l) The Treasurer
lives in extreme SW of SW 31-139-31.

Leell Trustly Road Overseer for N $\frac{1}{2}$ of twp
sect N=1. Geo. Weaver in S $\frac{1}{2}$ of
Twp which is dist N=2.

We monkeyed all A.M. with the lines
near the Old and New School Houses
where Confield and Hullett house sit
two different corners a long way
apart.

Going to SW Corner of Sec
7-139-31. Gout vater call for:
(X) Spruce 10 N 40 W 148 lks = 97.68 ft
Spruce 8.070 E 87 lks = 57.42 "
Spruce 10 S 45 W 118 lks = 77.84 "
Spruce 8 N 40 E 163 lks = 107.58 "

The N.E.B.T. stands plainly marked but
dead. It is Jack Pine instead of Spruce.
but is all right for size.

The other three are gone, but the old
pine roots are there and check out
fine for course and measurement.

Between the N.E. and S.W.B.T. the
distance is 0.20. (1/5) feet too long.

(4)

165

189-31 Deerfield

July 31-08 Continued

and between the NW and SE B.T.S. the distance is 1.00 (one foot) too short
 N^E and S measured from face of trees.
 NW and SE from Heart of trees

by proportional measurement
 Validation 9° or meridian Bearing True and
 snags of B.T.S. stand as follows
 N 37° 30' E 107.68 feet to face of trees (Hanging)
 N 37° 30' W 97.05 " Heart of snag
 S 46° 33' W 77.98 " to face of snag
 S 70° 45' E 57.05 " Heart of snag

Left proportional as follows:

107.58 ft + 0.10 =	107.68
77.88 " + 0.10 =	77.98
97.68 " - 0.63 =	97.05
57.42 " - 0.37 =	57.05

At this point we set a hub and tack
 for the line SW corner sec 7-189-31.

New B.T.S. as follows tack in
 9° stump 3. N 37° 30' E 20.30 ft (N 9°)
 9° Tree 3 S 16° 47' E 12.56 ft
 measured to tack heads

We cut a little line North and quit
 for night. Over night with Luitin

Jim Luitin - Bert Luitin - Art Hilden
 and I got in a whole day

166

(5)

139-31

Aug 1st 1908

Deerfield

John Luiten - Gert Luiten -
Art Halden - Frank Bice - Dell Trusty
and I began @

Reg @ New SW Cor Sec 7-139-31
run N. $9^{\circ}30'$ or

@ 1320 Hub. 1876.40 Tack in stump
2225.20 Tack in stump 2640 Hub
No B.T.S.

Confields $\frac{1}{4}$ port set: N $60^{\circ}57'E$
83.40 feet with New Being trees
as follows JP6 N ~~27 $^{\circ}12'W$~~ $37^{\circ}W$
12.40 feet " 8 N $66^{\circ}45'E$ 41.70 ft
or 9° . To face of trees

We continue our transit line N.

@ 3098.30 Hub. 3631.60 Hub
3960. Hub Temp $\frac{1}{16}$.

@ 4460 Hub @ 9° Hub. @ 5280 Hub

A corner established by B.B. Borlitt
Usher - Confields or some Hubbard & Co
Surveyor sets N $53^{\circ}3'E$ 130.30 feet
with New B.T.S. or follows
JP8 S $27^{\circ}17'W$ 47. feet marked "139
NR 32 W 12. B.T."

JP8 stands N $13^{\circ}35'E$ 27.90 feet
marked "T139 NR 31 W 12. B.T."

And another 10 inch Jack Pine which
has blown down stood S $4^{\circ}12'W$ 13.40 ft
Marked "AP. B.T." Measurements taken
to face of B.T.S. @ 9° variation.

This is the NW corner Sec 7,
139-31. and the Gout notes call

for Pine 8 N $79^{\circ}W$ 81. lbs = (only 3, and
" 8 S. $82^{\circ}W$ 70 " = } all gone.
" 10 S. $58^{\circ}E$ 64 " = }

167

⑥
139-31 Derfield

Aug 1-08 Continued

At the $\frac{1}{4}$ port on west side, Sec. 7-139-31 Govt. notes call for:
space 10 N 80 W 43. lks = 28.38 feet
only one but gone.

At the NW corner Sec 7-139-31, we do not find any evidence that the corner which is now there has been ever set from old bearing trees but it has been so well established by an East and West graded road with other land marks equally well recognized it would be almost impossible to move it.

It is my opinion that it is in the right place anyway.

We continue our transit line N. @ 5350. cross E & W wagon road grade into plowed field (not planted) 5740 leave field enter Jack Spruce @ 5913 Hub 6372.50 Hub @ 6600. Hot Temp $\frac{1}{16}$. @ 6700. enter plowed field not planted 7500 leave field. @ 7920 Hub Temp $\frac{1}{16}$ edge of field @ 7920 Hub Temp $\frac{1}{16}$

True $\frac{1}{4}$ port sets N $74^{\circ}15'E$ 159.40 feet.

Another 4x4 oak port (not marked) set presumably by Hubbard County Surveyor, sets N $72^{\circ}17'E$ 121.56 feet with no bearing trees to this port: It is marked " $\frac{1}{4}$ S."

Another $\frac{1}{4}$ port set by Canfield sets N $62^{\circ}55'E$ 190.40 feet marked " $\frac{1}{4}$ S. ROAD" and bearing trees set as follows
J Pin 4 N $65^{\circ}38'E$ 9.10 ft
J Pin 5 N $51^{\circ}30'W$ 13.70 ft

Over

168

⑦

139-31

Deerfield

Aug 1st 1908 Continued

measurements taken to face of
tree variation $8^{\circ}46'$.

Quiet for the night. Luitin & son
Twenty-Halden-Bice & I got in a whale
day. Over night with Luitin.

Sunday Aug 2-08

John Luitin and I worked all
day.

^{AM} We took Luitin's horse and drove
3 miles south over the graded road
and the first place we found evidence
of any Gout. Bearing trees in at
corner 19-20-29-30-139-31

This was the point where Hallett
started when he located the new
school house set two miles north
three years ago.

P.M.

We drove to Gout Meander No 13 on E
side Sec 7-139-31 but found no B.T. S.
Vale's call for BP 10 N 26 W 366. lks =
we found no B.T.

At Meander 14 SE of 6-139-31 Gout
niter call for: WP 16 S. 81 W 58. lks =
gone. At Cor 5-6-7-8-139-31 Gout niter
call for Dead WP 28 N 43 1/2 E 23. lks WP 24.
S 75 1/2 W 47. lks Bl Oak 10 N 16 W 37. lks.
all seem to be gone. Over night
with Luitin. John Luitin and one
horse and myself got in one day.

⑧
139-31

169

Aug 3rd 1908 Deerfield

Well Truly - John Haney - Art.
Halden - Frank Bliss John & Milton
Gert & Milton and I worked all day.

We set the $\frac{1}{4}$ post on the west
side see 6-139-31, from Old Goat
Bearing tree where the males call
for Pine 12 S 5 W 355. lbs = 234.30 ft
Pine 12 S 5 E 33 " = 21.78 "

We found the SW B.T. plainly marked and
standing. The SE B.T. was gone but
the roots of the old tree and part of the
log was there. Courses and
measurements checked out fine taken from
face of trees @ $8^{\circ}46'$ Var or meridian.

We set an ordinary 2. inch.
round stick for the true $\frac{1}{4}$ post with
following new Bearing trees.

Pine about 5 SE 11.85 ft

" " " " NE 23.40 "

" " " " SW 29.80

measurements taken to the head of a larch
grove near the foot of the trees.

We took the measurements from
our preliminary transit line, to
the true $\frac{1}{4}$ post on West side see
6-139-31 as given on Page 7 & 8
and with transit still set
on Confider's old $\frac{1}{4}$ corner, to the
true $\frac{1}{4}$ post just set by me.

Bear 3 $19^{\circ}13'W$ 46.20 ft $19^{\circ}15'$

My preliminary line Beginning
at the true SW corner of sec 7.
139-31 and running $1\frac{1}{2}$ miles North

Aug 3-08 Continued.

I have run absolutely straight with the transit but as it was chained by Old man & Wiley and I tell truly it is not absolutely correct for measurement tho it is chained mighty good.

Going to the SW Corner Sec 7-139-31 we cut a picket line South about 60 rods to the swamp but as it was wet we abandoned this line and went to the $\frac{1}{4}$ post on South side Sec 8-139-31.

At $\frac{1}{4}$ on S. side 8-139-31 (EX-5)
Gout water call for

NP 13 S $72\frac{1}{2}$ W 44 lbs = 29.04 ft

NP 16 N $56\frac{1}{2}$ E 42 " = 27.72 "

Both trees are there and are the right size and stand correct for course but they seem to be Jack Pine instead of Norway.

The SW B.T. has been gouged out on account of road and lays 10 feet for west and 6 ft to for South so I set the $\frac{1}{4}$ post from the NE B.T. U 8'46" from face of stump.

Drive a good hut for $\frac{1}{4}$ cor with B.T.s or follow: Pop 2 inches S $27^{\circ}10'$ W 25.70 ft to block head. Set one line in the old NE B.T. at a point an inch E of the little 'S'.

At Cor Sec 7-8-17-18-139-31:
assuming a point where I think Canfield set his stake, the B.T. I set stand or follow: GP 6 S $49^{\circ}36'$ E 27.50 ft
GP 6 S $20^{\circ}17'$ W 28.30 ft
" 6 N $28^{\circ}42'$ W 6.90 ft U $9^{\circ}15'$
face of trees.

(10) 171
139-31 Deerfield

Aug 3rd 1968 Continued

With transit set on assumed location of Confields corner, the assumed location of Halletts corner is

N 15° E 227.60 ft & 9° 15'

At assumed point where Hallett set his corner, New B.T.S. set as follows:

OP 6 N 32° 27' E 45.50 ft

OP 6 N 30° 28' W 54.20 "

" 6 S 47° 3' E 43.40 "

" 5 S 58° 52' W 37.00 "

To face of line & 9° 15'

Going to true $\frac{1}{4}$ post previously set by me & Belcher Secs 8 and 17 139-31 we run a careful transit line West along the center of the newly graded road bearing N 11° 30' @ 26440 set Hub "A" for line cor. (X) to sections 7-8-17-18-139-31

and put in light bearing lines as follows OP 5 SE 29.07 feet
OP. stump NE 12.99 feet

Assumed point of Halletts corner set E 3.50 ft and N 1.50 ft

Continuing transit line West: At 5280 ft set Hub for (X) Temp $\frac{1}{4}$ post between Secs 7 and 18, 139-31 with B.T.S. 0.3.

OP 2. NW 12.75 ft

Forced post NE 14.42 ft

Quit for the night
Clear night with L. Moon

Left Truly and I Chained and measured one absolutely correct
At $\frac{1}{4}$ post bet 7-18-139-31. Lat. nail, alpha
(I+6) Spaced 10 N 3 W 31 lkr = 20.46 ft
B.P. 10 S 7 $\frac{1}{4}$ E 8 lkr = 5.28 ft both gone

172

(11)

139-31

Aug 4-08

Seerfield

Honey - Luitin - Holden - Luitin
Trusty - Bice xS.⊗ Beg @ Hub 5280 west of $\frac{1}{4}$
port Sect 8 x 17-139-31 we continue
transit line west-⊙ 5446 Hallett's $\frac{1}{4}$ port sets 8 ft South
(He has set new B.T.S at this point)⊙ 5990.50 Hub ⊙ 6600 Hub temp $\frac{1}{16}$ ⊗⊗ ⊙ ?? Hub. ⊙ 6600 + 1098.24 =
7698.24 set temp SW cor sec 7
139-31

True corner sets S 44° 9' W 179.60 feet

Continue transit line west
118.90 feet and⊙ 7817.14, line SW cor sec 7-139-31
sets South (90° angle from transit line)

135.30 feet

all chained by Trusty and I and all
re-chained by us to make sure it
is correct

P.M.

All working except Honey and Bice.

Going to Corner Sec

19-20-29-130-139-31

Govt notes call for:

NP 15 N 66 $\frac{1}{2}$ E 98 lbs = 64.68 ft

BP 16 S 14 W 84 " = 55.44

NP 16 N 84 $\frac{1}{4}$ E 111 " = 73.26NP 13 N 80 $\frac{1}{2}$ W 121 " = 79.86We set the corner from careful
measurement from locker down in
face of the SW BP B.T. and the
East B.T. or both the N and NW B.T.
are defaced or gone.

Hallett's stake sets 8 inches SE of mine

(12)

173

139-31 Deerfield

Aug 4-08 Continued

Begin @ time corner to sec 19-20-29-30-139-30 we run North along cen of graded road for $8^{\circ}40'$ Transit-line and measured absolutely by Tensley and myself.

@ 2640 Gout nalis call for
 NP 18 N 33 W 77 lks = 50.82 ft
 BP 8 N 50 E 15 " = 9.90 "

Bath B.T.S are gone.

At 5280 set Oak plug in road for temp corner to sec 17-18-19-20-139-31 with B.T.S as follows

Tack in 6 inch dead pine stump bears N $30^{\circ}42'W$ 75.25 feet

Fence post N 4 from corner bears N $85^{\circ}E$ 33.70 feet to lock head

The Gout nalis call for:

NP 12 S $53\frac{1}{4}W$ 274 lks =
 NP 9 N $5\frac{1}{2}E$ 331 " =
 dead BP 12 N $89^{\circ}W$ 63 lks =
 BP 10 N $65E$ 59 lks =

all are gone

Continue North

@ 7920 set oak plug west edge of road for temp $\frac{1}{2}$ post between Sec 17 and 18-139-31 with B.T.S as follows
 NP 1. inch SE 24.10 feet to lock head
 Pop 1. " NE 24.00 " " " "

A stake set by Hallett sets N $54^{\circ}25'E$ 49.60 feet and East and a little south of Hallett's stake is a Jack Pine root 18.70 feet away from Hallett's post

At this point Gout nalis call for BP 8 S $85\frac{1}{2}E$ 30 lks = (both gone)
 dead " 10 S $20\frac{1}{2}W$ 35 " =

Went for night over night with sister

174

(13)

139-31

Aug 5-08

Deerfield

Beg @ Hub 7920 N of Co to tree
 19-20-29 30-139-31, being temp $\frac{1}{4}$ bet
 17 & 18 on continuous North side track
 and I chaining positively. transit line
 @ $5280 + 5280 = 10560$. set Hub "B"

Temp corner to Area 7-8-17-18-139-31

Govt notes call for

BP 10 N 10 $\frac{1}{2}$ W 58 lks = 38.28 ft

" 10 S 77° W 102 " = 67.32 "

" 10 N 21 E 110 " = 72.60 "

" 7 S 27 $\frac{1}{2}$ E 94 " = 62.04 "

all are gone so

We set Bearing lines to our Hub
 "B" N° 10560. on follow.

JP stump 8 SW 13.90 ft. to lock head

" " " 6 SE 8.30 "

and the assumed point of Confield's corner
 is 118.40 feet south and 11 feet west

At a point 97.50 ft North of Hub "B"

we cross our E & W preliminary line,
 54.40 feet west of Hub "A".

The N & S Road runs on 8° 40' on

" E & W " " " 11° 30' "

(14)
139-31

175

Aug 6-08

Deerfield

Bill Turley and I put in all day looking up Meander corner on Harey and Island Lakes MCV=12 gone. MCV=13 gone - contours 5-6-7-8-139-31. gone. MCV=14 gone MCV=15 gone. @ MCV=16 we found the big N.W. whipple line but it has burned down and the figures are on a slab 8 ft long, 2 ft wide and a foot thick

The town Board met and paid us off. I put in the following bill.

Aug 6-08

Twp of Deerfield

To John A. Currier

Engineer work in survey of wagon roads in Twp 139. Range 31

July 29-08 Coming to Deerfield $\frac{1}{2}$ day 200

" 30-31 worked in same $\frac{1}{2}$ day ex 800

Aug 1-2-3-4-5-6. Six days @ 4 2400

One day going home or allowed 400

by Law. 3800

This was paid Aug 6, and on Aug 7

Bank at Rockus cashed my check

@ 10% discount leaving me \$3420

Aug 7-08 I went home to Pine River after Ed and Mr Luitel brought me to Rockus.

Aug 8-08. Went to Brainerd dinner
and supper in Brainerd with my
wife who had 4 teeth filled paid
\$4.00 and came home to
Pine River on night train

Aug 9 Sunday came home
from Brainerd with Baby +
mama + Edla Johnson @
2. a.m. staid home all day.

Aug 10-08 went to Hachema

Aug 11th Hachensack to
Pine River

Aug 12th 1908 Went to Cross
Lake to make road survey for
Chris Burns but he employed
John Burtles to do it.

Aug 13 staid in Cross
Lake

Aug 14 Cross Lake to Pine
River

Aug 15-16-17 staid home

①
137-31 Cor Co 177

Aug 18-08

Law and I took the kids, got Mrs
2 a dogs 9x14 tent and drove with
Donforth 15 mi place with Donforth's
team, where we got a little house,
pitched the tent but did not use it.

Got Wideman's 22 Cal Winchester
Got in one day for Car Co
Over night at home in shack.

Aug 19-1908.

Howard St John, P.O. Mildred,
Chas Ingraham P.O. Pine River
Addison Donforth " " "

Began transit line at NW Cor
Sec 2-137-31. Gout Nolis call
for: WP12, S 3 E 54 lks = 35.64 ft
Tam 7 N 82 E 153 lks = 102.30 ft
" 8 S 89 E 150 " = 99. ft

Found SE white-pine green and standing
plainly marked "T 137-R 31, S 2" The SE S
Tand stands, plainly marked, but is
dead. NE Tam is gone.

We set 4x4 spruce post for corner
not marked. Tack in top set from
flat measurements taken from
face of B.T. after which old B.T. S stand
or follows: WP12 stands S 4° 10' E
35.64 ft to face of B.T.
Dead Tam 7. S 88° 45' E 99.00 ft to
face of B.T. U 8° 46'

Ran West Variation 9°

- @ 20. feet enter Tam Swamp (the
corner is on a little 4. rod island)
 - @ 4.50 ft leave swamp, enter North
point of solid ground
 - @ 540 ft Hub on 9. foot hill
 - @ 630 enter low solid ground
 - @ 730 enter Tam swamp
- Allen

178

(2)

Aug 19-08 Continued 137-31

@ 1320 Hub in swamp

@ 1535.90 Hub in solid spot in swamp

@ 2100 leave swamp, enter low wet land
2300 enter solid ground2436.80 Hub 2640 Hub Temp 1/4 post
True 1/4 post stands 2.40 ft. East
and 13 feet South, making the
1/2 mile 2.40 feet short

Correcting back:

2640 goes 813. ft. 2436.80 goes 812.5

1535.90 So 7.56 ft. 1320 South 6.50 ft.

540.00 goes south. 2.65 ft.

All got in full day. Over
night at home in black.
Soufath chained.

Aug 20-08

@ 1/4 post on N. side sec 3-137-31

First noise call for: BkP 9S 77W

148. lbs = 97.68 feet Tom 7 N 29W

108 lbs = 71.28 ft. We set the 1/4 post
from SW B.T. @ 8°46' from fore of stump
which is marked B.T. Tree is down.The NW tree can not be found. The one
old down tree may have been the one
it is 2 feet too far away, and 5 feet too far
west or so. we did not use it.

Beg @ true 1/4 post N. side.

3-137-31 we run West 9° on

Soufath & S Chained perfect, with plumb.
bob. true mount like.

@ 1275. enter meadow 1320 pin in meadow

@ 1520 E edge of Beaver dam runs

N & S. 150 ft. Hub on Beaver dam

1580 leave Beaver Dam. 1600 leave meadow
enter low solid ground.

@ 2148.30 Hub 2640 Hub Temp N.W.

Cor Sec 3-137-31. NO B.T.S.

③

137-31

Conn Co

179

Aug 20-08 Continued

@ NW cor sec 3-137-31. Heat
mole call for 1-

Dead NP 12 N 55 E 48 lbs

" NP 12 N 58 1/2 E 25 "

" Bal 8 S 44 W 31 "

} gone.

Line asp 15 S 44 1/2 E 244 lbs

Continued transit line west-

@ 31.53.50 Hub 3580 enter Tam Swamp

@ 3960 Plateau Swamp Temp 1/16

Quit for night

Seonforth - St John - Ingraham & S
all get in full day for Conn Co

Over night at home in shack
with the kids

Aug 21-08.

Seonforth - St John - Ingraham

Continued west line measurement &
transit line Plumbob Chain by Seonforth
& S.

Reg @ Hub 3960 in swp

Continued W. L. H.

@ 4230 leave swamp

@ 4387.70 Hub fat of slope

@ 4821.90 Hub on hill top 35 ft high
4950 enter new foot of hill

@ 5280 Hub Temp 1/4 part in Tam Swamp

Temp part but S 15° 52' E

25.30 ft.

At 1/4 part on side sec 4-137-31

Line mole call for 1 Tam N 46 E 7 lbs

= 4624 Tam 98 23 W 16 lbs = 10.56 ft

We found SW BT down which we cut off
and stood up & set cor from face

of B.T. @ 8' 46" on NE BT is gone

Quit for night all get in full day

Seonforth Chained.

180

(4)

Corr Co

137-31.

Aug 22-08

To correct back

D. Hub 5280, line $\frac{1}{4}$ post on N. side
 4-137-31 stands S $15^{\circ}52'E$ 25.30 ft
 4821.90 goes N $15^{\circ}52'E$ 22.80 ft
 4387.70 " " " " 20.80 "
 3960. " " " " 18.97 "
 3153.50 " " " " 14.90 "
 2640. " " " " 12.65 "

where we place a 6x6x48 inch cedar
 post for line NE corner to see 4-
 137-31, with the following B.T.S.

NP 5 N W 35.50 ft
 NP 4 S W 40.68 "
 NP 10 N E 41.47 " measured
 to lock head @ 9.40

2143.30 goes South $15^{\circ}52'E$ 10.14 ft
 1564. " " " " 7.40 "
 1320 " " " " 6.32

Back to line $\frac{1}{4}$ post N. side See

4-137-31 in Swamp we run

West 9' 10" for 1320 stake in swamp
 1500 into salted swamp @ 1525 cen 10 foot
 creek runs N.E. @ 2250 cen 10 foot
 creek runs S.E. @ 2550 leave swamp.
 2640 Hub line on stands.
 S $31^{\circ}47'W$ 26.21 ft
 connecting back.
 2640 goes S $31^{\circ}47'W$ 26.20 ft
 1320 " " " " 13.10 "

(5)

137-31. Corresp

181

Aug 22-08 Continued@ NW Cor Sec 4-137-31. Goutnall's
call for: W

WB 61x21E 39 lks = 25.74 ft

NP 26x62W 24 lks = 15.84 ft

NP 2x580W 27 " = 17.82 "

WP 36S 30E 64 " = 42.24 "

We found the NW B.T. plainly marked
stub standing & dead from which
we set line cor. @ 8' 46' from E line
the root of the SW B.T. is there O.K.
for corners & measurements but
we did not use it.

We found the root of the NE B.T.
but did not use it.

A big WP slip stands O.K. for
corner SE, but is too close

This is the E foot edge of
the foot hills

Reg @ NW Cor Sec 4-137-31
we run West 9' 30' thru foot hills
@ 404. Hub Hill top on changes to
10' 20' @ 600 bottom of reverse
962.40 Hub side hill. But
all got in full day.

Aug 23-08 we all went home
to Pine River with daylight
Sunday.

Aug 24-08 went to Walker in priv.
 " 25-08 in Walker to see
 about fixing all the old Townsite
 plats but Olin Vauhtole was
 gone so I looked up law and
 paid Dan DeLury \$1.00 for
 an opinion. &c.
 Staid with Malson

Aug 26-08 Came from Walker to
 Priv River to meet Mr HP
 Smart of the Wells Leakey Co of 14/8

Aug 27-08 Priv River to Bert Becker
 with Mr Smart Team of Tom Nash @
 \$3.50 per day. bot 3 lbs oats @ 170 55.10
 dinner at Beers 60
 bot of Mr Smart Cosh 10.00 Exp Money

Aug 28-08 paid Bert Becker 175
 dinner 00.00.

over night with Mark Snell.
 Got Expense Money of the same 10.00 Cosh

Aug 29-08 dinner with Snell looked over
 7-3-11-13-1-140-27 paid Snell
 for 3 meals 1. bed & Team 2.50
 Gave Mr Snell 50.00 to work my
 under work.
 over night with Chas Bloomer

Aug 30-08 Sunday paid Bloomer
 175. To Carl Richardson's
 for dinner paid 60.00 over night
 with Mr Henry Harrison

Aug 31-08 Paid Mrs Harrison 1.50
 Dinner with Mrs Barrett & son .75
 Boat of Mr. Smart 89.40
 Paid young Olds 25⁰⁰
 Over night with Mrs Barrett & daughter

Sept 1-08
 Paid Mrs Barrett 1.75
 Dinner out 0.0.
 Over night with E. Beard at
 Smiths resort Crooked Lake.

Aug 2nd 08 paid Beard 1.75
 dinner out 0.0.
 Over night with Miles & rowt

Sept 3rd 1908 paid Growt 1.75
 Our own lunch at Boyds place
 Paid Mrs. Boyd 25⁰⁰ for horses
 Over night with Art Becker

Sept 4-08 paid Becker 2.75
 for feed &c.
 dinner out 0.0.
 Over night with Ben Metzger.

Sept 5-08 paid Metzger 1.75
 dinner out 0.0.
 Got boat of Mork 2.25 50⁰⁰ for fuel
 Over night with Jim Tripp at Aliso

Sept 6-08 paid Tripp 2.25
 Boat of Mr. Smart 5.00
 dinner with Ann Mary & boat 1.00
 supper at Becker House 50⁰⁰ trip 50⁰⁰ = 1.00
 Pine River over night.

184

(3)

Sept 7-8 Smart & I squared up
accounts. He paid me \$50⁰⁰
& bunched accounts for my services
and some Jewett plats and
went home on AM train.

I paid Tom Vosh for team
being 11 days @ \$35⁰⁰ per day \$385⁰⁰
which Mr Smart handed
me to pay the bill with.

I sent Jewett & Son 1⁰⁰ and
instructed them to send 4 plats to
Mr Smart.

(6)
137-31 Cor Co 185

Sept 7-08 P.M.

Left Pine River in P.M. with
Lanforth & team over night with
Lanforth getting one duff for Cor Co

3 Sept 8-08 Tuesday

Howard St John - A. Lanforth
Daniel Murphy P.O. Pine River
Reg @ Hdt 962.40 west of the
NW Cor Sec 4-137-31 we

continued bearing line west -
our registers $10^{\circ}20'$ at this point
@ 1188.80. Put on hill top $010^{\circ}35'$
@ 1320 strike on west slope
1490 Cor of wagon road
(bearing NW & SE)

Thence up slope and across
forely level ground

@ 2159.60 Hdt

2640.

Hdt: True $\frac{1}{4}$ post stands

@ 70' W 15 ft

@ 2654. ft True $\frac{1}{4}$

post rd 3 South 5. feet

Correcting back

2654, $\frac{1}{4}$ post N. side 5-137-31
stands 5. ft

2159.60 goes South

4.00 ft

1320

2.50 "

1188.80

2.25 "

962.40

1.80 "

404.90

0.90

@ $\frac{1}{4}$ post N side 5-137-31 lost
nails full for: WP 7 N 48 W 4 lbs
WP 7 S 44 W 20 lbs We set the
 $\frac{1}{4}$ post from 2. old B.T. stamps
the N. one plainly marked

186

⑦

137-31. Con Co

Sept 8-08 Continued

We set the line $\frac{1}{4}$ on N side Sec
5-137-31 from old Gout-13T. stump
and established the following
new 13T.S.

The highest point on the South side
of a big rock bears S $6^{\circ}44'$ W 36.08 ft
WP stump N $13^{\circ}10'$ W 34.69 ft Trunk head
on or not taken probably 10'

Reg @ $\frac{1}{4}$ on N side 5-137-31
we run West- $10^{\circ}30'$ on
@ 200 enter open wet meadow

P.M.

Franky Merton Coswell began
work in P.M.

@ 1050 cut tail. Culvert side.

@ 1100 leave slew N x S.

@ 1245.50 Hub on hill

1320 Hub 1360 Cor of 20 foot slew
N x S. @ 1700 cross old wagon road

N x S. @ 2237.40 Hub on hill

@ 2640 Hub. True Cor stands

N $27^{\circ}18'$ W 20.50 ft

@ 2649.50 True Cor stands N. 18.40 ft

coming back

2649.50 goes N 18.40 ft

2237.40 15.50 "

1320 9.20

1245.50

Overnight with discomfort

⑧

137-31 Corn Co

187

Sept 9-08

A. Danforth - Cornwell - Murphy
St John worked all day

@ NW Cor 5-137-31 ^{Ant. poles say:}
Bch 12 N 62 1/4 E 32. chs = 21.12 ft
WP 4 437 W 7 " = 4.62 "
Bk Oak 45 68 1/2 W 29 " = 19.14 "
orp 55 67 E 22 " = 14.52 "

We established the line corner for
one NW WP B.T. which has been
cut off and hauled away out stump
has plain marks as old stake
stands. We set line cor @ 8° 46'
face of stump. The roots of all
the other B.T.s. Creek out fine
for course & measurement

Set new BTS as follows:-

Red Oak 8 N 41° 44' W 41.15 ft
Bch 12 S 42° 6' W 42.20 ft to
Took heads on not taken.
P

Begin @ line NW Cor 5-137-31 across
west 10° 00'

@ 276.40 Hub on hill
651.70 " 847.30 Hub

@ 885 E edge little lake which
ends 60 ft south & a long way N.

@ 1003 leave lake
1029, Hub. set by stadia from
Hub 847.30

@ 1200 E brow of hill 1320 Hub on
hill 1406.50 Hub on hill

1460 W. brow of hill 1820 foot hill
edge narrow slus N to S.

Over

188

(9)

137-31 Corres

Sept-9-08 Continued

@ 2023.30 Hub on island

2180 leave Island enter lake
set stake marked "2180"We could not measure the lake
at the 1/4 post N. side 6-37-31So we pass around it where
our transit-line cuts west-
bank of lake and set stake mark-
ked "O.O." for W. C. (assumed)
and continue transit-line west@ 886.38 ft we set trip 1/16 Hub
rough chainQuit for night over
night with Deafnath

Sept 10-08 Bag @ Hub

886.38 we con. con. transit-line W.
to where the NW cor. of Tarp
137-31. should be but found
no B.T.S. and give up the
survey for this timeWe corrected up the line
clear to the NW cor. side 3-137-31
and quit for the dayOver night with Deafnath
Jake Huffman was with us
in P.M. and Deafnath took
him home in evening

(10)
137-31 Com Co

189

Sept 11-08

Finished up survey and came home
to Pine River with Lanforth & Tom
Paid Lanforth for gun.

I boarded with Lanforth

Sept 7 1 meal 1 bed

" 8 3 " 1 "

" 9 3 " 1 "

" 10 3 " 1 "

" 11 1 " 1 "

11 meals & 4 beds or a little over
1/2 week I paid Lanforth \$2.00
for board.

I worked Aug 18-19-20-21-22-
making 5 days and
Sept 7-8-9-10-11. 4 days making
9 days @ 4.00 = \$ 36.00 } \$38.00

In this I do not charge for the
Sunday I went home for the
Monday I came out to Lanforth's
the second time

Howard St John worked on survey
Aug 19-20-21-22 4 days
Sept 8-9-10 3 " } 7 days

A. Lanforth worked on survey
Aug 19-20-21-22 4 days
Sept 8-9-10 3 " } 7 days

190

(11)

Conn Co

137-31

Sept-11-08

Chas Ingraham worked on survey
Aug 19-20-21-22 4 days

Daniel Murphy worked on survey
Sept-8-9-10 3 days

Fred M. Caswell worked survey
Sept-8-9-10-1908 3 days

Sept-12-13 staid home

①

191

Coss Lake

Sept 14-08

I took 3.35 PM train to
Coss Lake to make survey for
H. N. Hording - First National
Bank of Coss Lake.

Supper with Pete Madson at
Walker. Over night with
Archie Siddons at Coss Lake.

Sept 15-08 Election day.

I worked all day surveying
the front of the Sam Hatfield
property in Lot-13, Blk 9,
Coss Lake.

I measured 100. feet from True S.E.
Cor Blk 9, North and set a point with
a cross in the cement sidewalk
100. ft. N. of said Cor and another
cross 120 feet N. of same corner.

The first point shows the S.E.
corner of the Sam Hatfield property.

The S.E. Cor of the Block is
2 1/2 inches under the corner of Bldg
but I located it by 2. Tacks I drove
in the sills of the building by me
in a previous survey before the
wall was built.

True distance East from sec line to
S.E. Cor Blk 9 is 333. feet flat.

True distance from S.E. Cor Blk 9
North to an IRON MON. Set 10 feet out
from the N.E. Cor of the Block is 1/10 of a
foot too long, but Hatfield's
S.E. corner is just 100. feet North
of S.E. Cor of Blk 9. regardless of the
width of the Block. over

①

193

Bockus

Sept 17-08 staid home in P.R.

Sept 18-08 " " " "

Sept 19-08 " " " "

Sept 20-08 " " " "

Sept 21-08

I got a team from Tom Nash
and drove with my wife & Mrs.
Mrs. Fred Monstetter to Bockus
to make a survey for
A.O. Miller. Drove with Zoffke

A.M.

Charles Rice & I began @ NE cor
Blk 9. Koops addition cut
a little brush, ground axes
and quit for dinner

Miller's kid pounded
my team all to hell but I
tried to get along with it.
P.M.

Phil Palmer came out in
place of Rice and we began
@ the stone Monument set
for $\frac{1}{4}$ post near Koops store
and ran south overnight
with Zoffke

194

(2)

Backus

Sept 22-08

I worked for Art Miller up to
train time and he paid me
\$6.00 for churning out in the rough
the American Gear Turbine Co's
lot-

Sept 22nd

I worked for John Bailey in
P.M. Frank Thompson and I
began @ Stone Cabin @ SW cor 32
134-30 and "cut out" the SW $\frac{1}{4}$ SW $\frac{1}{4}$
732. Compared in Correll chain
Bailey owes me \$4.00 for work

I telephoned Nash for a team to
take me to Pine River but as he did
not have one I walked down
in the night, checking my survey
outfit with kindness of Stought
at Backus.

①

195

Pine River

Sept 23rd 08

I do not remember where I was all day, but I was surely home part of the day because I sent my lianrit levels to Keuffel & Esser, after my lianrit and grip arrived on the lian.

Sept 24th 08.

at 2.10 AM. Lightning struck our house and put us out of bed.

My wife and I went to Jerkins with a team of Tom Vosh where I met Mr HPSmart and we drove to Cross Lake.

Over night with Mr Eastman

Sept 25

Overnight with
at Swanberg.

Peterson

26th

Swanberg to
and back overnight with Peterson

Sept 27-08

dinner with
Overnight with.
at Rich Lake.

Walton

196 Out

(2)

Remer

Sept 28-08 Mr Smart & I stay over
night with E.L. Stevens at Remer.
we drove over the new road N.
side of Big Rice Lake -- almost possible
Hanson & 10 men are working on it

Sept 29.

Over night with Smart at Snowball

Sept 30-08

Snowball to Pine River

Oct 1-08

Mr Smart went home to Mpls
after he had paid me \$30.00 in cash
for my 7 days time out with him
Sept 24-08 to Sept 30-08 inclusive

We own Tom Nash for 7 days team
work @ \$3.50 per day. = \$24.50
which Mr Smart will send up
as soon as he gets to Mpls

Oct 2-08 Recd check from Mr Smart
drawn to John W. Curro \$24.50
which I am to hand over to
Tom Nash for the team

Oct 3rd gave Nash Mr Smart's ck
\$24.50 in full for the team

1 Record 1917
139-31. Deerfield

Oct 4-08 Sunday
Probably staid home.

Oct 5-08
The Transit Levels arrived from K&E
Lew is sick

Oct 6-08
I telephoned Mather who came from
Hackensack 1 Pine River on 11.42 AM
train to stay with Lew
I took 3.35 PM train 1. Backer
over night with Frank Thompson
got in one day for Deerfield

Oct 7-08
Paid Thompson 75¢ for lodging
Frank Thompson and Jas Wilson of Backus
claim to have seen the Beating Place to
the N of 12 T 139, R 31 on South Side of Haney
Lake. So I arrang for them to go show
me the B.T. Wilson could not go so Thompson
took his team and drove out to the spot
and could find no trace of the "tall
sharp stump". He claims he and Wilson
found the iron marks on a slab
4 1/2 ft long by 6 inches wide laying
in or near the water and he gave
it to W H Hallett who fitted it to a
stump which he presumed to be
the B.T. I am sure they were all
mistaken as the slab is still
over

198 Recorded (2)

187-31

Oct 7-08 Continued Deerfield

there with Hallett's # mark on it, but it is a Norway and came from a Norway stump which I proved by a knot in the stump and slab. The M.C. stake set by Hallett set in the water at exactly the right spot to show positively that Hallett used the Norway stump above referred to as and considered it a BT.

Jim Wilson-Thompson, John Luitin &c showed Hallett this slab or stump

Sept 26-05 to Sept 30-05 in which were the days he worked on the survey

Thompson made out his bill for \$3.00 against Deerfield for bringing me out and went back to Backus in P.M. Dinner with Luitin

I got in 1/2 day for Deerfield

P.M.

John Luitin worked in P.M. for Cass Co on Island Lake & Deerfield road. We looked up the road over the old R.R. grade.

I and Luitin got in half day for Cass Co but will charge up a whole day over night with Luitin

③ Recorded 199
139-31 Deerfield

Oct 8-08

Ed Lailin worked in A.M. for Conn Co.
We found the B.T.S. on E. side sec 8-139-31
I and Ed got in $\frac{1}{2}$ day for Conn Co.
Luncheon with Lailin

P.M.

John Hanley - A N Hankst + John + Ed
Lailin + Ed worked in P.M. for Deerfield
Twp.

Beg @ Hub "B" 10560. Two miles
North of Cor to sec 19-20-29-30-139-31

We continued transit line North
Ed Lailin + I chaining perfectly
correct with plumb line

@ 2 miles + 650.50 Hub in field

@ " " 1000 enter slew

@ " " 1180 ft. Fairfields $\frac{1}{16}$ post
set 3 ft. E ?

@ " " 1111 Pop point

@ " " 1320 Stake in slew

@ " " 1652.20 Hub on sea wall

$1652.20 + 10560 = 12,212.20 =$ Hub on sea
wall at which point Halletts M.C.
stake set N $41^{\circ}15'E$ 81. feet

@ 1664 + 2 miles enter south edge of
lake at which point one of my old
temporary Meander corners set
7. ft E, and another of my temporary
M.C. stakes set 11. ft East

Quit for night. Over night with Lailin
we all got in $\frac{1}{2}$ day for Deerfield
but will probably change for a full day.

200

Recorded

(4)

139-31

Deerfield

Oct 9-08. John & Ed Lulin - Hanks
and Hane working for Deerfield

Ed chaining: Transit on hub N^o 1652-20 =
12.212.20 I caused a Hub to be placed
on North side of Lake Hane on Hill,
being hub N^o 15114.10. -- We got the
measurement across the lake, by
off-sighting about 80 rods west
at 90° angle carefully taken

Transit set on Hub 15114.10 we
chain 165.90 feet north and set 3 mile
Hub. Quit for night, over night
with Lulin

This was the last day Hanks cut brush
all got in one day for Deerfield.

Oct 10-08.

Hanks, Ed & John Lulin, Hane & I
worked all day for Deerfield: Hanks looks
press: Bag @ 3. mile Hub we run north
@ 410.50 Hub near South shore of Island
lake. I caused Hub to be set on North
side of South arm of Island Lake
being Hub N^o 3 mi + 1142.80

We get the distance across Lake by
off-sighting about 500 ft west @ 90° angle
carefully taken

Transit set on
Hub 1142.80 we run north and
set Hub 1553.30 then North 110.40 ft
and set stake N^o 1663.70

at which point true M.C. N^o 15.
sets East 45.40 feet

Quit for night overnight with Lulin

⑤
139-31 *Recorded* 29
Leeifield

Oct 11-08 Sunday.

Hanks & John & Ed & Miller & Honey & I
worked all day for Leeifield. Hanks Hunt Co's
@ N^o 3. + 1663.70 True M.C. N^o 15-139-31
set East. 45.40 feet

at this point Gortmole's call for:

WP 26 N 76° W 50 lks = 33.41-

" 24 N 59° E 36 " = 23.76 ft

The NW B.T. is plainly marked but
down and the slab with figures on it
is loose from the life. but went
the post from this stump 08°46'
outside of stump. The NE B.T. is
there but stands N 29° E instead of 59° E

I drove took in both stumps
and measure from rock heads.

The NE B.T. is not marked so
I really do not use it

We found our distance in the
whole run of 3. miles + 1663.70
ft is really 271.10 ft longer
than the 1 foot chain calls for
Gort chain calls for 2 miles + 2218
lks + 5065 + 717 = 3. miles

Then 3. miles + 360. links +
+ 1750 links = 3. miles and 1392.60
feet Our chain shows really
3. miles and 1663.70 feet

Hence the 271.10 feet too much
ground Over night with Lulu

Oct 12-08 Hung up the crew and went
home to Pine Bluff Breakfast with
Lulu Drove to Bookers with Ed Lulu
dinner at home. Over night in P.R. Gave
Lee Trust 12

202 Records ⑥ Deerfield
1893/

Oct 13-08

I sold WPM Mahler 75⁰ for seed
Trusty's lodging. Paid Ruess to Backus
and then to NW Hanks where I staid
all night

Oct 14-08 Breakfast with Hanks
who brought me to Lulu's

Lulu's + Son + Honey Beg @
Hub N^o 3. miles + 1663.70 being MC
N^o 15 139-31 we chained North
732.20 feet and set Hub N^o 2395.90
about 100 feet South of the W arm of
lake. Caused Hub to be set on
N side of lake. at 3787.90 ft

We got distance across lake
by off-setting West of Hub 2395.90
could chained North 1392 ft then
East to Hub 3787.90

Then North @ set for night
series out over night with Lulu's

Oct 15-08

Lulu's + son Honey + I Begin @
Hub N^o 3787.90 on N side of
Island Lake we run North
1320 feet + 108 feet = 1428. ft.
+ 3787.9 + set Hub N^o 5215.90
at which point the line NE

Co of Sec 6-139-31 sets E-1-
90⁰ angle 139.20 feet The last
measurement is 3. miles + 5169.12

My chain is 5215.90 over length
is 46.78 feet @ 13" being NE

on Sec 6-139-31 last note call
NP 20V 87E 95 ch = 62.70 ft

" 83 53E 92 " = 60.72 "

BP 60 50W 59 " = 38.94 "

⑦ Sheffield 203
134-31 Recorded

Oct 15-08 Continued

We found both Norway stumps
the trees had been sawed down
but the B.T.S. was plain. The SE
stumps did not have the slightest
sign of being worked, not even a
depression in the good plain back
and the top of the short stump showed no
signs under the closest scrutiny
but when we chapped in there was
the B.T. plain. The JP was gone
but a mound where the roots had
been was in evidence.

We set the NE cor of 6-139-31 from
measurement from face of B.T.
after which they stand $0^{\circ} 8' 46''$
NP 20 N $89^{\circ} 45' E$ 62.70 feet
" 8 S $51^{\circ} 0' E$ 60.72 "

Courses taken to head of stumps &
measurement to face of B.T.
We drove oak stakes $4 \times 4 \times 8$ inches
for corner. Took in top and set new
BTS on Pop 4 N $1^{\circ} 8' E$ 22.38 ft
Lead Pop 4 S $73^{\circ} 30' W$ 22.30 "
to look head drove in spot

all of our measurements for the whale
four miles has been checked by Sell
Trusty & I and Ed Lutin & I with
plumb bob & steel tape absolutely correct
& chained twice. Took dinner out
Quit for today. Lutin & son
Harry & I got in full day for Sheffield
our night with Lutin
I am establishing the SE cor
see 7-134-31 and will submit my
measurements to Washington and
have them find the distance with the
courses will go I have the other mea-
surements in a nut shell

204

Record @ Deerfield
1893

Oct 16.-08 Lutin & Son Haneys & I
beg @ time $\frac{1}{2}$ port previously set by
me but seen 5' x 8' - 139-31 we ran west
11:00 am @ 30 ft cut in open slew. there is about
200 feet of solid stony ground in C.
of the marsh @ 550 leave slew at
911.80. Hub on rain @ 1320 ft. Hub @
@ 1326.60 Hub temp $\frac{1}{16}$ C @ 1340 ft cut
open wire grass slew @ 2010. ft leave slew
@ 2144.50 Hub on hill 50 ft 20 of point of
solid land @ 2400 enter slew @ 2580
leave slew 2640 Hub @ 2653.20 Hub
Temp sec C on Hub "13" John Lutin & Haneys
worked in A.M. and quit in P.M. 10
go see Hanks. Joe Phillips and
Lell Twisty look the places of Lutin
& Haneys in P.M. Phillips & Twisty
worked $\frac{1}{2}$ day in P.M. Haneys &
Lutin got in $\frac{1}{2}$ day in A.M.
Ed Lutin & I worked all day E & L.
changed first 1326.60 ft and Twisty
changed to Hub 2653.20 quit for night
leaving out our night work Lutin

Sat-Oct 17.-08

Lell T. Channing Reg @ Hub 2640 "13"
west we continue west @ 1320 ft x
set Hub 3960 @ 3973.20 set temp $\frac{1}{16}$
Hub Reg @ Hub 3960 at Chain 1320 ft
W. and set Hub 5280 @ 5293.20
set Temp $\frac{1}{16}$ Hub N side 6-139-31
At this point an assumed sled
bottom corner set in at about 35° W about
86 feet My Gout notes call for 2 Big
Norway pines but I find two small
JP dead & bloomed so on to N and SW
& NW of $\frac{1}{4}$ C. & probably 2.00 ft
away. These JP are not mentioned in
my St Paul field notes.

⑨

✓ 205

Recorded

Oct 17-08 Continued

but I am going to report them to Washington and have them O.K. on correct my H. Paul notes.

Beg @ Temp 1/4 port being 14 at No 5293. 20 we continue with Turkey ch J Lulin & Haneey Thierhead Haneey, gran in a.m. but worked p.m. not in 1/2 day each sell Turkey ch & Ed Lulin & got in full day for Deerfield. Linnier with Turkey over night with Lulin.

Sunday Oct 18-08

Lulin-Lulin-Haneey & Turkey & I channing Beg @ 1/4 Hot No

5293.20 run about 1320 and set Hot 6613.20 Temp 1/6 port @ 6973.40 Hot @ ft have corsets 20 at 7758.30 Hot Temp cor

Thence 30.40 west & set Hot 7788.70 at which point old sec cor stand South (96°) 179.70 ft. Qut for mine (This old slope is Beger Corner and may not be right)

Ed Lulin got in 1/2 day in a.m. Turkey ch Ed Tapler & Joe Tapler who live 1 mile W. of sec cor 6-139-31 say they do not know whether this corner was set from Gov't B.T.S. or not. P.M.

John Lulin & I went to 1/4 port bet sec 16x17-139-31 where Gov't Note say B 28 N 58 E 6.1 km = 3.96 ft WP. 7 N 83 W 18 " = 11.88 "

By making a spot on the outside of the top of the hill the measurement check out so the lines both stand correct on course, but by measure from the old B.T. figure I would have to stick the

206

Recorded ¹⁰ Deerfield
139-31

Oct 18-08 Continued

Chain in order to get the stake so far enough so the corner would catch the line from the true stake.

After setting the 1/4 post bet 16 & 17 from measurements from the extreme outside sap of the trees the line stand correct for corner $8^{\circ}46'$. Then I and Mr Lulin went in a boat to M G V² 11 on the E side of Goose Lake.

Where Gortvalis call for
NP12 N 63 E 42 lbs = 27.72 ft
" 16 N 81 1/2 E 31 " = 20.46 "

Both of these the two sides of stumps are badly burned, and stand about in the right place.

Over night with Lulin, J Honey, Ed Lulin, J Lulin & I got in full day. Left Tuesday got in 1/2 day in a.m.

Oct 19-08 Monday.

Board of Deerfield met and paid me off \$48⁰⁰ with his court added = \$53.30 in draft No 230

John & Ed Lulin, Honey & I worked all day for Corn Co.

Ref @ 1/4 post bet 8 & 9-139-31
Gortvalis say:
NP12 S 84 1/2 W 21 lbs = 13.86 ft
WP26 S 85 1/2 E 28 " = 18.48 "

Both stumps standing. Least Vix corner $8^{\circ}46'$ is 16.50 ft 100 long. Set stake pointually correct from while spot in stump proportional measure $18.48 + 3.71 = 22.19$
 $13.86 + 2.79 = 16.65$ Total 38.84 ft

⑩ Con Co
13931

207

Recorded

Oct 19-08 continued

drove Hot at right spot Honey & Lulu cut brush all PM. Ed & I took Ed's team and lookover checker to the Deerfield Treasurer who registered them. Not paid for work of funds. Then drove back to Lulu's our night work.

L. & Ben Honey & I got in full day for Con Co on survey.

Trusty - Phillips - Frank Bice worked all day for Con Co on road work and grad.

Tuesday Oct 20-08

Ed/Lulu & I Ch. Beg @ 44 Hot E side 8-13931 run N $8^{\circ}46'$ Transit line @ 250 ft cross old Hooker's road old NE @ 800 Cor of 80 foot new Culvert site @ 1320 Hot temp $1/16$ @ 2101 Hot on Hill @ 2640 slope @ 2640 + 14 = 2654 True sec Cor into East 23.80 ft

at Cor to lines 4, 5, 8, 9-13931

Long notes say:

WP 6 N 85 W 6 Lin = 3.96 ft gone

" 12 S 19 $1/2$ E 57" = 37.62 "

NP 28 S 22 $1/2$ W 88" = 58.08 "

" 24 N 42 $1/2$ E 63 = 41.58 "

at next post from SE to SW BT stumps dimly marked The NE NP is turned out by the roots and logs so we would have to get a shovel to find the BT. Quit for night Lulu & Lulu, Honey & I worked all day for Con Co. Hot 1320 went N 7 ft & E 11.90 ft True $1/16$ Cor Thunder storm evening

208

(12)

Coss Co

Recorded 139-31

Oct 21-08 Wednesday

Beg @ New 1/16 E side NE 1/4
 8-139-31 we run E $9^{\circ}40'00''$
 Transit line @ 1320 stake @ 2640
 stake @ 2930 Hub in gap, out
 hills @ 5280 stake Then run
 north 1320 ft but could
 find no B.T. S. Then the boys cut
 a compass line about 1/4 mile
 so to the old boat road but
 did not chain it all. these lines
 were measured rough but the mile of
 line running East through the
 N 1/2 of Sec 9 is absolutely straight
 Ed Lulin & Leel Trusty chance
 coming back to Hub 2930 in gap in
 hill we run the road cen
 S $49^{\circ}15'$ E about 1000 feet to stake
 set in old boat road
 Thence S $14^{\circ}00'$ W about 750 ft to old
 grade. Thence East in old grade
 Quit for night Over night
 with Lulin

John Honey, John & Ed Lulin worked
 all day for Coss Co on survey
 Leel Trusty - Frank Rice, Joe Phillips
 Herbert Totto cut work on survey
 but they are to put their lines in to
 Leefield on road work and
 their pay comes out of the \$100.00
 appropriation for the Island
 Lake road.

(13)

189-31

209

Cons Co

Recorded

Oct 22-08

Ed Linton took me to Becker
lunch & over night at home.

✓ ① Pine River
138-29.

213

Oct 23-08

Pine River Twp.

Went home in A.M. and worked
for Pine River Twp. in P.M.

John and Henry Leef, J.W. Grover
& J. Beg @ 1/4 post previously
established by me on south
side of R.R. 33-138-29.

We ran transit-line 1/2 mile
West to the SW Cor. of 33
138-29, to corner previously set
by me from all four B.T.S.

We set row of white-slakes
the whole half mile @ 8° 45'

all got out full day for P.R.
Twp. we did not chain it.

Beals

I sent Sears, Robuck & Co.
\$16.28 for tent 12x12 4 1/2 wall
10 of duck 8 inch soil
cloth, 1 score pipe ring
pins & poles.

My wife, Gerald & I left P.R.
at 5 P.M. with Grace and
Leslie Beals and drove to
A. Beals farm.

Over night with Beals.
I am working for Beals &
Berfield.

Oct 24-08 I am working for
Beals & Berfield. Rained all
day laid up.
We are staying with Beals.

214

②

139-28

Beals x Berfield

139-28

Sunday Oct 25-08

I am working for Beals x Berfield. Rained all day laid up

Oct 26-08

Wm Berfield, Leonard Berfield and Anson Beals Geo Curtis x I worked

Beg @ NW Cor Sec 30-139-28

Goutmolls call for

Tow 7 N 78 E 9 lks =

" 10 S 26 E 19 " = 12.54 feet

" 11 S 54 W 40 " = 26.40 "

" 11 N 17 W 28 " = 18.48

3rd class work

We moved the old stake about 8 feet N.W. and set it in the rough from the S.E. B.T. which is up-rooted. The N.E. B.T. is down & marked but seems 15 feet too far away.

The NW B.T. is up-rooted and not well marked, but I have saw the figures on this tree two years ago.

The SW B.T. we did not take time to dig up. The post probably sits very close to the true site.

Beg at the NW Cor Sec 30-139-28 we run East 8' or @ about 1000 ft cross creek twice then westerly

@ 1146.42 set square stake marked "Temp 1/4" set by Curd". at this point an old stake well iron marked has been set by some surveyor

Beals

(3)

139-28

215

Oct 26-08 Continued

who has used linker scribe
set East 0.2 feet

Continue 1320 feet East and
set stake at 2466.42 feet a
stake marked "Temp 1/4 post
"Cur" at

At this point-being the 1/4 on S
side of 19-139-28 4 out notes call for
Aspen 6 N 80 E 190 lbs = gone

" 6 N 85 E 175 " =

both trees are gone.

Continue East 1320 feet and
set post No 3786.42 marked
Temp 1/16. Thence East 1-1320
feet more and set post No
5106.42 being Temporary SE Cor
Rec 19-139-28 at which point

4 out notes call for
Aspen 9 N 20 E 18 lbs =

" 9 N 10 W 67 "

" 6 S 55 E 22 "

Wich 9 S 10 W 19

did not find them. so we

Continue transit line East
2nd Class Chaining

Reg @ Temp SE Cor 19-139-28

Continue East @ 630 ft enter Creek
100 ft NW of outlet of lake @ 700
feet creek and follow along a
few rods north of lake @ 1320

set temp 1/16 post 100 ft N of lake

@ 2120 Cross 10 ft Creek @ 2640

Temp 1/4 post S side of 20-139-28

where 4 out notes call for:

Aspen 6 S 40 W 23. lbs = gone

W. Birch 4 N 15 W 26 "

Quit for night overnight with
Beals

216

(4)

139-28 Beals

~~202/28~~

Oct 26-08. Continued

Grace Beals took my wife and baby home to Pine River in A.M. for which I am to pay Beals \$2.00 and my wife's board comes to 8. meals and 3. bed & c. \$1.50. making in all \$3.50 which I am to pay Beals as soon as he pays me. for my work. Wm Bealfield & Beals chained rough.

Oct 27-08.

By @ limp $\frac{1}{4}$ port on 20 side of 20-139-28 we continue rough transit line E on 8° 0' on

@ 3960 ft limp $\frac{1}{4}$ port @ 5280 set stake for limp SE cor. sec 20- at which point Govt notice call for:

YP 20 N 45 E	36	lks	=	23.76 ft
WB 55 24 E	25	"	=	16.50 "
WP 7 N 21 W	20	"	=	13.20 "
WP 5 S 68 W	17	"	=	11.22 "

We found the true corner about 200 feet west of our limp 5280 stake and 153. feet north of our transit line

We set the true corner from the NE & NW Bealfield cross from which we set the line on by measurements from outside of figures. after which the NW B.T. stands N 17° 45' W 1320 ft but I did not take the course to the NE B.T. The two South B.T.s are gone.

(5)

Beals 217

139-28.

Oct 27-08 Continued

We did not correct up
our two miles of preliminary
line along the south side of
Sec 19 and 20. 139-28.

We left the transit and
took the compass and ran a good
clean compass line East
to the SW Cor of Sec 22-139-28
where we failed to find the cor.
compass line Buford x Beals &

Bay @ line SW Cor Sec 21-139-28
we run East 8.00

@ 2640 ft set temp $\frac{1}{4}$ post to
side of 21.10 ft East of the creek
where Gout notes call for:-

WBch 8 N 63 E 50 lbs -

asp 10 S 30 W 31 "

We did not stop but a short time
to look but continue East

@ 5280 ft set temp SW Cor
Sec 22-139-28 Gout notes
call for

B. Oak 6 N 31 E 40 lbs

B. Oak 12 N 52 W 37 "

asp 20 S 12 E 16 "

" 8 S 45 W 10 "

we did
not find
them

We found an old stake
marked with blue pencil at
which I set a new big stake
not marked.

Going back to temp stake
N 5280 just set, my new
big stake sets at 280.30 E
193. ft down 8.

compass line rough Chain
Bay at old stake and my new
stake set near the SW Cor
Sec 22-139-28 I run N 6.40

@ 2640 Temp $\frac{1}{4}$ post

218

⑥

139-28

Bulls

Oct 27-08 Continued@ 1/4 port on W. side of 22-139-28
Gout nales call for:

WB ch 12 East 10. lbs

" " 10 West 20. "

did not find them

Continued north

@ 5280 we found an old stake
in meadow which we took
for NW cor 22-139-28 but
did not mark it up
Gout nales call for:

JP 8 N 10 E 275 lbs

Tom 5 N 27 W 113 lbs

WP 9 S 68 E 132 "

JP 8 S 42 W 250 "

we did not find any of the B.T.S.
tho if we had looked harder we
probably could. an old
stake set by some one, must
be mighty close to the right
spot as the shape of the meadow
would not allow it to go much
of any place else so weBog @ stake at NW cor
22-139-28 and run west 7-40@ 2640 camp 1/4 port on S
side of sec 16. where Gout
nales call for:

asp 7 N 28 E 3.

" 7 S 42 E 7.

we did not look long, gone

@ 5400 we intersect an old
blazed line running N & S, at
a point 50 feet south of an old
stake set for the SE cor of 16.
139-28 where Gout nales call for:

asp 7 N 29 E 17 lbs

" 6 S 33 E 28 "

WB 7 S 53 W 34 "

asp 6 N 87 1/2 W 32 "

all gone.

(7)

Beals 219

Oct 27-09 Continued

we paid no attention to the old stake but set a big new stake at intersection of our line with the old blazed one where we set a big post marked "preliminary survey, set by Curo".

Beg @ new stake we run
 N bet 16 & 17 8° over @ 2640 ft
 temp 1/4 post 400 poles run
 WP 8 S 18 W 17 lks = 11.22
 WB 6 S 45 E 52 " = 34.32 ft

could not find them.

Q out for the night. Burfield
 Burr chained in PM.
 Over night with Beals

Oct 28-09

Beals, Burfield Burr and I
 begun @ temp 1/4 post on west
 side of 16-139-28 and run 2640 ft
 N. set temp NW cor of 16 where
 400 poles call for
 WB 7 N 25 E 29 lks
 " " 7 N 45 W 22 " } we did
 " " 7 S 45 E 27 " } not find
 asp 8 S 60 W 33 " } them

Then we run west 3/4 of a mile
 then south a mile and home for dinner
 PM.

Good and Leslie Beals took me home
 to Pine River Burfield Burr & Beals
 owe me \$12.00 less \$3.50 leaves \$8.50
 and I am afraid they will never
 pay me.

232

273

① 137-30

Walden

Nov 10-08 Tuesday

Left Pine River @ 3. p.m. drove
with P.O.M. Anderson & my wife to
see 32-137-30 set up my new ^{hairs}
tent in Andersons yard ^{above}
supper and over night with Anderson
Got in one day for Walden trap.
John A. Carr

Wed Nov 11-08

Hunted in a.m. Breakfast and
dinner with Anderson Fixed up
tent in p.m. and moved in
supper and over night in tent
Got a pile of wood and a chalk
line from Anderson which I have not
paid for NO WORK. Today. ^{only cut wood}
John A. Carr

Thursday Nov 12-08

I am working for Walden trap
John Johnson, John A. Johnson
Joe Francis, Alfred Anderson
P.O.M. Anderson and I worked
all day for Walden

At Cor 15 sec 28-29-32-33, 137-30
Gout holes call for:

WP 10 N 80 W	4 lks	= 26.4 ft	
" 8 S 47 E	9 "	= 5.94 "	
" 12 N 19 E	51 "	= 33.66 "	
Bick 6 S 50 W	38 "	= 25.08 "	gone

at this point we found the
three pine stumps but only the NE
one was marked
set line corner from measurements
from face of trees. Pap gone. we drove
a 1x12 inch iron pin for corner and
ran west 8°30' over Francis and P.O.M.
Chaining down an old cut out line run
by Hallett

K & E Transit
Chicago Tape.

(2) 137-30

233

Walden - 273

Nov 12-08 continued

@ 2640 (rough chain) we found Hallett's
stake at this point being the $\frac{1}{4}$ post
on N. side 32-137-30 4 but value say;
Bk Oak 7 N 19 E 50 lbs = 33.00 ft
" " 9 S 52 E 140 " = 92.40 "

I found both trees green and
standing and I set the line $\frac{1}{4}$ post
by flat measurement from face
of B.T. With Transit set on line
 $\frac{1}{4}$ post, old B.T. stand as follows
B. Oak 7 N 12 12' E 33.00 ft } on 8° 46'
" " 9 S 46° 30' E 92.40 "

With a back shot at NE cor of 32, and
another at line $\frac{1}{4}$ post just set
I worked transit on line between
them and set a row of stakes
the whole half mile to show the road
center. Hallett's $\frac{1}{4}$ post sets
about one foot E of line.

Rough Chain true transit line
Or quit for dinner
P.M.

Reg @ $\frac{1}{4}$ post on N side 32-137-30
we ran West 8° 30' on being a
transit line with row of stakes
just set on N. line of NE $\frac{1}{4}$ of
32 - for back shot (could not
see NE cor for hit)

@ 1320 Hit Temp $\frac{1}{4}$ post

@ 1909 Hit near stump

@ 2640 " Temp see cor

True corner to see 29, 30, 31,
32, - 137-30 stand N 5° 14' W
42.00 feet, showing that there
is a heavy crook in the whole
mile of the line. P.M. anderson & I
measured correct with Plum-bob
K & E Transit Double center hub

234 Walden

③

137-30

Nov 12 208 Continued

K+E Transit
Chicago Steel Co.

@ Co 16 Sec 29-30-31-32-137-30

Government field notes call for:

WP 8 N 80 1/2 E 50 lks = 33. ft

" 7 N 50 W 70 " = 46.20

" 16 S 29 E 45 " = 29.70

Apr 12 S 61 W 65 " = 42.90 gone

We found the three white Pine B.T. stumps but the NE one was not marked tho Joe Francis says he has saw the plain figures on the stump before it was burned. The distance between the NW & SE B.T.S. via courses is 0.45 fut 100 long, so I proportionate the measurement & and set true corner after which the three pine B.T.S stand as follows:-

Variation 8° 46' E

WP 7 N 50 W 46.45 fut } face of B.T.

" 16 S 29 E 29.90 " }

One old stump claimed by Francis is the old B.T. stands N 80 1/2 E 37.00 feet all measurements taken from face of B.T.

The N.W. B.T. is plainly marked but is down - burned off at roots but the stump is there. We do not use NE B.T.

Correcting N. Bary of NW 1/4 32-137-30

2640. goes N 5° 14' W 42.00 feet

1909 " N 5° 14' W 30.37 "

1320 " N 5° 14' W 21.00 "

where we place a short square oak stake for John A Johnson's true NW corner with new bearing lines as follows

Pop 8 N (about 10° E 41.50 ft } To take head

" 6 S (" ") 10 E 55.70 "

POM anderson & I chained perfect quit for night over night at home in tent POM & Alfred Anderson John Alfred Johnson and John Johnson Joe Francis and I all got in full day for Walden Township

273

John W Curo

Keuffel & Esser (4) Walden 235
Transit, Chl Tape.

137-30 - 273

Friday Nov 13-08

Reg @ line cor to sec 29-30-31
x 32-137-30 we run West $8^{\circ} 30' 00''$
@ 700 Ht. @ 1320 Ht Temp $1/16$ post (Joe
Francis SE cor) @ 1540 ft enter open
meadow. @ 1950 ft Ht. leave meadow
@ 2397.6 Ht @ 2640 Ht True $1/4$
post stands $81^{\circ} 44' E$ 32.20 feet
assuming our preliminary line
just run to be E & W.

at $1/4$ post N side of 31-137-30

your notes call for:

aspen 8 935 W 54 lbs = 35.64 feet. gone

wp 7 N 59 E 29 " = 19.14 "

at which point W.H. Hallell has
set $1/4$ post near the School House
correct, $8^{\circ} 46' 00''$ from the NE
wp. B.T. which is there but down.

The post is gone.

I establish new B.T.S. viz:

Pop 10 S $62^{\circ} 22' E$ 35.53 feet, Took
" 8 S $63^{\circ} 50' E$ 49.93 " Head

Correcting N. Bdry of NE $1/4$
of sec 31-137-30

2640 goes $81^{\circ} 44' E$ 32.20 feet

2397.60 " $81^{\circ} 44' E$ 29.25 "

1950 " " " 23.78 "

1320 " " " 16.10 "

where we set Joe Francis $1/16$ post
Est new B.T.S. as follows

Pop 6 S about $10^{\circ} W$ 48.08 feet (To Took
" 3.8 E " 50.70 " Head

700. goes $81^{\circ} 44' E$ 8.54 ft

Quit for night all got in fall day
for Walden Temp. over night
in tent.

John W. Cress

236

(5)

Owners of
32.K & E Transit
Cust. to be

137-30

273

Saturday Nov 14-08

John working for P.O.M. Anderson
John A. Johnson, John Johnson
Jacob Johnson, Nels Lewang.

P.O.M. owns: NE $\frac{1}{4}$ of Sec 32.
137-30 160 acres. John Alfred Johnson
owns E $\frac{1}{2}$ NW $\frac{1}{4}$ 32, 80 acres.
Jacob Johnson owns E $\frac{1}{2}$ of SE $\frac{1}{4}$ 32, (80).
Nels Lewang owns E $\frac{1}{2}$ SW $\frac{1}{4}$ and W $\frac{1}{2}$
SE $\frac{1}{4}$ 32, 160 acres.

Soient - Eikon owns SW $\frac{1}{4}$ NW $\frac{1}{4}$, NW $\frac{1}{4}$
SW $\frac{1}{4}$ 32, 80 acres but does not live here
land is looked after by John Johnson.

NW NW 32, owner unknown 40 acres
SW SW 32 owned by John Johnson

To subdivide 32-137-30:-

Begin @ line NW cor formerly set by me
we run S 80° 30' 00" carefully taken
P.O.M. and I Ch. pb line level land
@ 1320 Hub @ 1337 cross wire fence
bear E x W fence runs to run E x W
several hundred feet or I cannot see
the end. @ 2040 Hub @ 2640 Hub
temp $\frac{1}{2}$ post, between Secs 31 & 32
137-30 foot notes call for:

Spruce 6 S 62 E 38 lbs y both gone,
W 13 ch 8 S 56 W 28 "

@ 3011 Hub @ 3325 enter slew

@ 3520 leave swamp, @ 3960 Hub

@ 4463. Hub on hill @ 4726.80 Hub
or change to 8' 05'

@ 5280 Hub temp SW cor 32

@ SW cor 32-137-30 foot notes say
W Birch 7 N 42 $\frac{1}{2}$ E 23 lbs y only 2,
" " 6 N 81 W 16 gone

could not find them P.O.M. & I
Took dinner with John Johnson.

John W. C.

POM a.
Yes

(6) 137-30²⁷³ 237
NOV 14-08 Continued

We went to the NE cor 32-137-30
where Gort holes call for:

Tam # N 45 1/4 E 5 lks only 2,

" 6 N 13 3/4 W 37 " 1 gone,

Both B.T.S. are gone and were never
sown by any of the old settlers
but James M. Confield (C. M.)
found the old Gort stake years ago
and re-placed it with a new stake
and the new stake set by Confield
has been carefully guarded by
Velo Lewang, P. M. Anderson, Jacob
Johnson Etc.

We dug Confield's old stake out
of the corduroy after an hour's
hard work and I made new
bearings to it as follows
on 8° 46'

Fence post N 34° 15' W 31.85 ft

" " S 34° 54' W 38.80 "

to back head driven in post.

Velo Lewang and his son John showed
us a stake set by Confield for the
NE corner sec 6-136-30 also both
N.P.B.T. Humps but as I have not

got the field notes I could not
check up on the stake tho I am

sure Confield's NE cor stake is too
far north and East. (I will look this
up later) Chaining from the two stakes
set by Confield, NE cor 32-137-30

went to NE cor 6-136-30 I find the
distance 1490.50 feet or 31.46 ft

shorter than Gort chain calls for
which is 2666 lks = 1591529.96 ft

P. M. Anderson & I chained correct
Confield's line. I got in one day for
owners of 32-137-30 J. Lewang, J. A. and J.
Johnson cut brush, quit for night over night
in line. 273 John W. Cuss

273

Sunday Nov 15-08

Laid up. P.M. Anderson
 Joe Francis and I drove to Jake
 Hoffmann's farm where we found
 Jake had gone hunting so we staid
 till after dinner to see him.

We got back home at dark and I
 wrote Tom a Nash and sent him
 his bill against Cass C. for \$5⁰⁰
 with instructions to sign and send
 in. Bill reads as follows

I also sent A.H. Pike his bill and
 instructed him to send it in. Bill
 reads as follows

Monday Nov 16-08

I am working for owners of
 sec 32-137-30 subdividing the sec
 going to the 1/4 port on N side of 32
 I put spot of the crew eating
 line South thro the cen of the sec.

Then going to the NE cor 32
 I put up a flag. By working the
 transit on line in the wagon
 road between the SE and NE corner of
 sec 32-137-30 I find the line and
 we drive a line of shot stakes (48")
 the whole mile. Then Pete Anderson
 and I chain the whole distance
 carefully. Jacob Johnson Helping

Bay @ NE cor we chain South
 @ 1320 ft set wood pin @ 2640 pin
 temp 1/4 port on E side of 32-137-30
 where 4 out notes call for:

open 9 S 60 E 15 then both are gone
 " 10 N 78 W 11 "

John W. Lewis

(8)

137-30

299

-273

Continue South @ 3960 pin @ 5243,
 put intersect line SE corner of 32.
 showing that 5280 ft Goat ch =
 5243. I put my chain on 37 feet
 short. Correcting back
 we place Hub 2640, 18.50 ft North
 and drive an iron pin 78 non 1 foot
 long.

The crew I put cutting brush south
 through the center of 32, run
 into Nels Leuang's house and
 quit.

I started the same crew
 cutting brush west through the
 center of 32. at 8:30 AM

I and part of the crew began
 at line SE cor of 32 and run with
 through Confeld's Closing Corner
 near NE cor of 6-136-30

@ 1320 stake @ 1490.50 Confeld's
 stake @ 2640 Hub temp $\frac{1}{4}$ on so
 side of 32-137-30 where Goat
 notes call for.

Balsom 7N 52° E 23 lks both ore gone
 B. ash 10 N 5 W. 19 "

Continue west
 @ 3647.70 Hub in swamp @ 3960
 set stake in swamp and quit for
 night. I got in another day
 for owners of 32-137-30.

Overnight at home in tent.
 Tom Anderson, John Johnson
 John Leuang, Jacob Johnson
 Oles Iversen and I worked all
 day.

Later we throwed up this line
 and run a new one further south.

240.273

(9)

137-30

I am working for owners of
Sec 32.

Tuesday Nov 17-08

Continuing west from
SECn 32-137-30. @ 1320 Hub

@ 1490.50 Canfields C.C. @ 2640 Hub

@ 3400 enter green Tans & ash swp

@ 3647.70 Hub @ 3960 Hub

Reg @ 3960 we continue west
K & E transit line P.O.M. & S. Ch

Correct @ 3980 cross 2 foot creek
west 2. + 600 leave swamp

5280 Hub Temp Hub "B" SW cor

32-137-30. at this point Hub

"A" (5280 S) sets 34.70 ft

south and 3 feet E east

We throw up this line &
come back to iron pin set for

line $\frac{1}{4}$ on E side of 32 we run

west along the picket line just

cut. Transit line perfect Chain

by P.O.M. & S. @ 1320 Hub @ 2640

Hub "A" Temp cor of Sec 32

@ 3960 Hub @ 5280 Hub "B" Temp

$\frac{1}{4}$ post on W side of 32.

Reg @ line $\frac{1}{4}$ post on N. side of 32

we Chain through south but.

perfect transit line @ 287

Hub on hill @ 1320 Hub 1950 Hub

@ 2640 Hub "B" Temp center of sec

32. @ 3284 Hub on raise @

3960 Hub quit for night

Jacob Johnson, John Johnson

John Lewis, P.O.M.

Willis Nicholson worked for

and in place of John Alfred

Johnson) all worked all day & up

that -- Hoggard worked in P.M.

in place of Abel for John Johnson

John W. Lewis

(10)

137-30

241

A.M.

-273

Wednesday Nov 18-08

Reg @ Hub 3960. So of $\frac{1}{4}$ post on
N. side of 32-137-30 we continue to
rough chain perfect transit line.

@ 4724. Hub Offset 29.36 feet
West to get around Nels Swangs
House. Then South 400.10 feet
Thence East 29.36 feet to line Thence
South 154. feet and set Hub 5280

Coming back to $\frac{1}{16}$ on N. side
of NW $\frac{1}{4}$ 32-137-30 we run S. 8° 10' W

@ 563 Hub 1320 Hub 2640 Hub

Quit for dinner and will begin
surveying in P.M. for Walden
Twp. I have got in for the
owners of 32-137-30 the following line

Nov 14-08 Saturday worked 1. day	4.00
" 15- " laid hips	0.06
" 16 " Monday worked one day	4.00
" 17 " Tuesday " "	4.00
" 18 " Wed worked $\frac{1}{2}$ day	2.00
same crew worked	14.00

P.M.

I am working in P.M. for Walden Twp.
POM anderson & I Channing Alfred
anderson, Joe Francis, John
Johnson, Jacob Johnson cut
brush.

Reg @ line $\frac{1}{4}$ on S. side of
30-137-30 previously set by me

we run West

@ 1320 Hub 2659.14 Hub Temp

SW cor 30-

242. 273

①
PM137-30
WaldenWednesday Nov 18-08 Continued
at SW cor 30-137-30

Gout holes call for:

Bunch 8 N 32 E 6 lks =	} all B.T.S ore gone
Aspen 8 N 17 1/2 W 18 "	
" 9 S 31 W 14 "	

Bunch 7 S 37 E 14

Quit for night my wife run
transit all day. I got in 1/2 day
for Walden Township in P.M.

Got the mail from Pine River
Over night at home in the tent

Thursday Nov 19-08

I am working for Walden Tap
Beg @ 1/4 port on west side of
30-137-30 Gout holes call for "N"
NP 24 N 35 E 83. lks = 54.78 feet
NP 16 N 20 W 208 " 137.28 "

We found the NW B.T. stump plainly
marked "B.T." and a buried up-
rooted NP lays NE in just the
right place

I set the stake @ 8°46' 00"
and measured from face of B.T.

Our meridian and course brings
us exactly in the center of the old
gout stake point which are
chopped out of the frozen bog

We set a 4x4x48 inch
oak stake drove well down for line
1/4 port and run S 8°46' 00"
on Range line across meadow
@ 1320 Hub on S side of meadow
@ ? ? Hub on side hill @ 2108.80
Hub 2640 Hubs "B" Temp SW cor
30, 137-30,

Nov 19-09
Continued

12

137-30

243

Walden

273

We find an old stake 4x4x60 inch oak which has been set for the SW cor of 30 and the roots of trees standing near indicate very strongly that the post once stood in this place but the NE BT root is pop instead of "Birch" and the roots of the NW BT are all gone and or there is no iron marks to be found all have to pass it up and continue south.

@ 3536.50 Hub 3960 Hub

Quit for night.

POM & Alfred Anderson, Francis & John Johnson & I got in whole day for Walden Twp.
Mr Chycklund at tent for supper.

Friday Nov 20-09
Walden Twp.

Reg @ Hub No 3960 So of 1/4 post on W side of 30-137-30 are continue Transit line south. @ ?? Hub @ 5280 Hub

Temp 1/4 on W side of 31-137-30

where Govt notes call for:

Birch 10 S 53 1/2 E 16 lbs } gone

" 6 S 80 W 25 " }

Continue south.

@ 6209.50 Hub @ 6600. Hub Temp 1/6

@ 7059.50 Hub @ 7920 Hub "A" Temp

SW cor of Twp 137-30 where Govt

notes call for
asp 13 N 45 E 53 lbs = 34.98 ft } gone

" 9 N 25 1/2 W 38 " = 25.08 "

244

(13)

Walden.

273

13730

Nov 20-08 Continued

Jas Francis John Johnson
POM & I worked. Francis pays
himself. and Ole Johnson is 15 pay.
John Johnson. or this line benef-
its him. and if he fails, Francis
is to pay John Johnson.

POM and I got in full day
for Walden Twp.

We re-chained the whale
1 1/2 mile and found it correct
and I set my transit on Hat
1320 Hs and gave Jas Francis
a rough line East @ 9:00
to show where his north line might
be.

Hang up this survey till
County or some one else puts
in Tap corner.

Over night in tent

Saturday Nov 21-08

Beginning a new survey for Walden
Twp. POM and I

Chaining, John Johnson and

Aug & K. Latt by men.

Begin line SW cor Sec 23-137-30
previously set by me we run East
8° 15' 00"

@ 695.50 Hub @ 948.40 Hub 1300

Culvert rite @ 1320 Hub Temp 1/16 in

little sewer @ 1760 Cor of 2 foot creek

run NW & SE Bridge rite low water

land @ 2040 enter open sewer

@ 2240 leave sewer @ 2444. Hub

on raise @ 2640 Hub Temp 1/4 Hs

side of 23-137-30 John W. Curo

137-30

273

Nov 21-08 Continued

at $\frac{1}{4}$ section 20 side of 23-137-30

Quit notes call for:

dead Bal 6 S 28 E 20 lbs y gone.

" " 4 N 30 W 31 "

@ 2680 enter meadow,

2760 Cen 2. foot creek south

2900 leave meadow. 3370.40

Hobson hill 3960 Hob temp $\frac{1}{16}$

4372.40 Hub 5280 Hub

True corner stands N 54° 26' W

55.40 feet

at corner W sec 23-24-25-26

137-30 Quit notes call for:-

Tan 8 N 85 $\frac{1}{2}$ E 250 lbs = 165 ft

WB ch 9 S 58 E 360 " = 237.60

The lain has been ploughed out -
but the Birch stump still stands.James M Confield former Co
surveyor, established this corner.and set a square stake from both
Bearing trees but in doing so
he had to reverse the courses

so that the Bearing lines stood as follows

Tan 8 N 58 E 165.00 feet 70° 8' 46'

WB ch 9 S 85 $\frac{1}{2}$ E 237.60 ft

measured to foot of B.T.

I set a stake marked "True Sec Cor"
and also drove a lain stake in the
field where the old lain line stood
all got in full day for Walden
Quit for night at home in tent

John W Curo

246

273

(15)

Walden

137-30

Sunday Vol 22-08

I walked to Jake Hoffmann
in A.M. and I and Lew went
hunting rabbits in P.M. Shot 20
Rabbits and one Partridge

Vol 23-08 Monday,

POM. Anderson, John Johnson
Aug Klatt, axle Framling & I
worked for Walden Tap

Correcting to Bdry of

223-137-30;

Hut 5280	goes N 54° 26' W	55.40 ft
Hut 4372.40	" " " "	W 45.88 "
" 3960.	" " " "	" 41.55 "
3377.40	" " " "	" 35.44 "
2640	" " " "	" 27.70 "
2444	" " " "	" 25.64 "
1320	" " " "	" 13.85 "
948.40	" " " "	" 9.95 "
695.50	" " " "	" 7.30 "

Quit for night all got a full
day for Walden.

Vol 24-08;

Working for Walden Tap

POM. went to see Bungo Tap Board
axle Framling & I chanced, Alfred
Anderson & Aug Klatt as men

Reg @ true Ch 10 Secs 21-22-
27-28 137-30 previously set by
me we run West 8° 30' on

2nd rate Chaining

@ 250 ft cut in slow @ 1175 leave slow

@ 1320 Hut near fence 2070 Hubon

side hill @ 2640 Hut top 1/4 port

to side of 21. Lost 1/2 mile Bay

13000 10 N 57 E 65 W 4 gone.

" " 78 30 W 30 " gone.

John W Curo

(16) Walden
137-30 - 273

247

Tuesday Nov 24-08 Continued

at 3960 Hb 4621.60 Hb on
hill @ 4950.50 Hb @ 5280 Hb

True corner sets N----- ft

at corner to 20-21-28-29 Govt notes say
Aspen 8 N 35 W 57 lks

" 9 N 18 E 70 "

Dead Birch 6 S 60 E 22 "

Bk Oak 8 S 37 W 138 "

Quit for night all got in full
day for Walden Twp

Wed Nov 25-08

POM. Anderson, axle framing & I
worked 3/4 day for Walden Twp

at corner to Secs 20-21-28-29-137-30

Govt notes call for:-

Aspen 8 N 35 W 57 lks = 3762 ft

" 9 N 18 E 70 " = 4620 "

Dead Birch 6 S 60 E 22 " = 1452 "

Bk Oak 8 S 37 W 138 " = 91.08 "

We found the SW Oak and
the NW Aspen plainly marked and
standing dead but the Govt surveyor
got the measurements to the NE
and NW Aspen BTS. mixed so
by reversing the measurements
to the Aspen I we set the line on
and then the old BTS stand on
fallows for 10°

Bk Oak 8 S 37 W 138 links to face
Dead Asp 8 N 25 W 70 " " "

A Dead Aspen about 9 which I am
sure was one of the old BTS. which
has been burned and down, near
N 18° E 57 lks and a Birch root
near S 60 E 22 lks

John W. Curo

248

17

137-30

273

Walden

Nov 25-08. Continued

Setting transit on Hub No 5280
W on the preliminary line just run
line corner stands N 19° 10' W

57.15 feet

correcting south bdy of sec 21-137-30

we set Hub 5280 N 19° 10' W 57.15 ft

4950.50	goes N 19° 10' W	53.58	"
4621.60	" " "	50.02	"
3960.	" " "	42.86	"
2640.	" " "	28.57	"
2070.	" " "	22.40	"
1320.	" " "	14.29	"

Quit for the day and got in
3/4 day for Walden Twp.

This ends the Walden survey
for the present.

Jacob Johnson paid P. M.
Anderson \$2.80 to be handed to
me for him for 1/5 of the
subdivision of Sec 32-137-30

My bill against Walden Twp to
date is as follows:-

93 1/4 days one day going home	Nov 10-08	coming out 1. day	10. "
	" 11-08	Hunted deer	00. 00
	" 12-08	worked	10
	" 13- "	"	10
	" 14- "	" on private survey	10
	" 15- "	Sunday went to Kupper	00 00
	" 16- "	worked Private survey	00 10
	" 17- "	"	00 10
	" 18- "	" 1/2 Each	05-05
	" 19- "	" for Walden	10
	" 20- "	"	10
	" 21- "	Walden new survey	10
	" 22- "	Sunday to Kupper	00
	" 23- "	worked Walden	10
	" 24- "	"	10
	" 25- "	" 3/4 day	7 1/2
one day going home			10
			103 1/4 days

18 136-30

249

Haugyarde & Co.

273

Nov 25-08

worked 1/4 day in P.M. for Ole O.
Haugyarde in subdivision of sec
6 - 136-30

at NE Cor 6. Gout holes call for
WP 118 82 1/4 E 218 lbs = 1431 88 ft
NP 128 32 W 166. " = 109. 56"
We found both stumps plainly marked
"O.C." & Co. from which we set the true
corner by measurements from face
of B.T. after which the B.T.s. stand
fine for corner except that the
SE B.T. is about 1" too far so

Going to 1/4 post on E side of 6
136-30 Gout holes call for
W Bch 80 40 W 17. lbs = 11.22 ft
" " 7 N 50 E 12 " = 7.92 "

I find the stumps, and the
distances via corner 8° 46' over
to be 4.00 feet too long.

By proportionate measurement
I make them as follows:

$$7.92 + 1.65 = 9.57 \text{ ft}$$

$$11.22 + 2.35 = 13.57 "$$

To face of stumps. Morris Finnie
Oscar A. Olson (son of Haugyarde)
Ole Haugyarde & I worked 1/4 day
in P.M. for owners of sec 6.
136-30.

Back @ line 1/4 post on E side of 6. Run N
Chained 1326. Put & quit for night

Thursday Nov 26-08 Thanksgiving
Cold up. Capt. Lew & I went hunting deer
in a.m. & Capt. got tired & went home
P.M. Lew killed her first deer.

250

(19)

136-30

273

Hougaard & Co

Friday Nov 27-08

I am working for the owners of sec
6-136-30. Beg @ the true 1/4 post
set by me on the E. side of 6. 08'10"
W. then N. following the new cut-
out road @ 1320. Hat Temp 1/16
Then chained 1699.50 feet more
and set Temporary NE Cor Sec 6,
at Hat 3019.50 True Corner
sets 180.70 feet North and 31.30 ft
West.

Govt Chain calls for 3019.50
feet and I find the true length
3200.20 feet or 180.70 longer than
Govt chain calls for
-Correcting back

I set Hat 1320, North 78.99 feet
to Hat N = 1398.99 Then West 13.68
feet where I set the true 1/16 post
at the NE Corner of Finnies land
with New B.T.S as follows:

OP 6342.42' W 9.27 feet } over
" " 5950.30' E 54.27 " } 8°46'
to nail head in lines

The East boundary of the NE 1/4 of 6
136-30, Govt Chain calls for 2000.
links = 1320. feet * 2575 links =
1699.50 feet making in all 3019.50
feet. I find the true distance
to be 3200.20 feet, or 180.70
longer than Govt Chain

Old O. Hougaard & Monir
Finnie chained one end and I
held the other True Chain Transit line

From the SE Cor of 32-137-
30 W to the NE Cor 6-136-30 Govt
notes call for 2306 links =
1521.96 feet I find true measure-
ment

(20)

136-30

251

Nov 27 - Continued

2273

to be 1529.30 feet or 7.34 feet
longer than Govt chain
Setting transit on line

Closing Corner @ NE cor 6-136-30
I back sight on line
SE cor 32-137-30 and run out
@ 1111.10 ft set hub 1320

@ 2640 Hub no govt BTS one
given for the $\frac{1}{4}$ port on N side
76-136-30 Quit for the day
I got in one day for owners
of sec 6-
Ole O Haugyarder Morris
Finnis E. E. Left transit
at Levanga.

Saturday Nov 28-08

Reg @ Hub 2640 W of NE cor
6-136-30 We continue transit
line west @ 3960 Hub @ 5280
Hub Then 200.64 feet west
and set Hub 5480.64 for Temp
NW Cor of 6-136-30

Govt notes call for:

Tem 5430 E 17 $\text{thr} = 11.22 \text{ ft}$
" 6830 W 21 " $= 13.86 \text{ "}$

all are gone.

I took dinner with Norstrom
PM

Continue west @ 5480.64 + 1320
set Hub N 26800.64 @ 5480.64 +
2640 set Hub N 28120.64 near
 $\frac{1}{4}$ port N. side sec 1-136-31

No BTS given Quit for night.
One day for Hoggard, Finnis & Co
John Johnson & N-Chained whole line &
found $\frac{1}{2}$ inch in $1\frac{1}{2}$ mile Ole & N
Chained perfect

Left Transit at Norstrom

252

273

(21) 136-30

Sunday Nov 29-08

Hunted and packed in 2 ew's
deer. Cecyl helped. Met Clint
boys all the deer have left
for the big swamp in sec 12-13
136-31 for day storm coming
I guess.

Monday Nov 30-08

Stormed, I laid up.

Tuesday Dec 1-08

Cold I am working for owners
of sec 6-136-30 Ole Kangyarde
I re-chained perfect. John Johnson
and I re-chained P.O.M.
Anderson & Nels Lewang cut
brush. Beg @ Hub 8120.64
near 1/4 post N side 1-136-31 No
BTS. given in field notes We
continued West @ 8120.64 + 900 M
set Hub No 9020.64. near SW cor
of Twp 137-30. @ 5480.64 + 3960.
set Hub No 9440.64 near temp 1/16
@ 5480.64 + 5280. set Hub No
10.760.64 near temp NE cor 2-
136-31. Gout notes call for
legged pins 12 S 12 W 128 lbs = 84.48 ft
orp 8519 E 207 lbs = 136.62 ft
both gone
@ 10.760.64 + 30 ft set Hub
at about 60 feet West of Hub
10.760.64 one marked corner stake
10. feet south and another marked
stake stands 20 ft N x 6 ft E of
Quit for night I walked over to
see Hinch Home via Joe Francis
John W. Carr

-273

Wed Dec 2nd 08

I am working for the owners of 32
137-30. Beg @ Hub 10.760.64
W of NE Cor 6.136-30 we continue
West Old Houggaule x S. Ch
Correct. Marked Finner x S
Check Chaining Oron Olson
x Nils Luwang or men.
@ 9 Chs 190 ft (ch) + 48 ft set
Hub No 11.618.64 ft and looked
for 1/4 point on South side of
Sec 36-137-31 where Goutnolis
call for.

Tam 11 N 35 E 10 lbs = 6.60
Pins 5 N 52 W 16 " = 10.56 gone

@ 10.760.64 + 1320, set Hub
marked 1320 @ 10.760.64 + 2640
set Hub marked 2640. @ 10.760.64
+ 2640. + 10 chains + 20 feet Hub
14.320.64 @ 14.321.49 set iron
survey pin True SW Cor 36-
137-31 sets to 33.40 feet

at the SW Cor 36-137-31

Goutnolis call for.

Pins 10 N 85 1/2 E 14 lbs = 12.5 x 1
W 23 1/4 W 51 lbs = 33.66 feet

I set a hub and look for true
corner from the 10 inch pin which
is plainly marked and standing
but is cut off 14 ft above the
ground. It was up-rooted
by wind & cut off with down.
Then the roots sprang it back
to place. I find the roots of the
"Punch" which is mentioned in
the field notes but it is not marked
and a foot too far away so I do
not visit. Check chain back & quit
for night. Full day for owner of 32-137-30

254

273

(23)

137-30

Walden

Thursday Dec 3rd 08

I am working for Walden Twp
 P. M. Anderson & John Johnson
 helping. To correct the boundary
 of sec 32-137-30

Correcting

The total distance from NE cor
 6-136-30. C.C., west to the SW cor
 36-137-31 is 14.321.49 ft
 my chain and 14.318.04 feet Govt
 Chain making 3.45 ft long

The distance from the SE cor 32
 137-30 west to the NE cor C.C.
 6-136-30 is 1529.30 my chain
 + 1521.96 ft Govt chain making
 7.34 feet too much land.

In setting the $\frac{1}{16}$ post west of the SE
 cor 32-137-30 I chained west 1320
 ft set pin, then at 1521.96 ft set
 pin, then NE corner of 6-136-30 is
 West 7.34 feet Correcting
 back I set pin N 1320, West
 6.37 feet at which point we
 drove a 3x3x36 inch oak stake
 marked: "TRUE $\frac{1}{16}$ Post" set No
 new bearing lines

The $\frac{1}{4}$ post on S. side of 32-
 137-30 should stand 1694. links
 = 1118.04 feet west of the NE cor
 of 6-136-30 Govt chain, but as the
 total distance of 14.318.04 feet
 west is 3.45 feet long and
 33.40 feet to South, 1118.04
 should go 0.27 feet west making
 total distance West-1118.31

as 14.321.49 goes 33.40 ft to
 1118.31 goes S 2.61 ft to true place
 where we put an oak stake for
 $\frac{1}{4}$ post N 137-30. This is my last day for Walden
 Quit for night

24 137-30

255

POM. area

Friday Dec 4-08

Sam working for owner of sec 32
 137-30 John Johnston - & POM Anderson
 working for Walden & helping. The 1/16 port
 E. of SW Cor 32, should stand 3694 lbs
 = 2438.04 but W. of NE Cor of 6-136-30
 Gout ch but as the total distance W. of
 14.318.04 feet Gout ch is really 14.321.49
 ft. or 3.45 ft long, Hub 2438.04 goes
 W. 0.59 feet to Hub 2438.63
 As Hub 14.321.49 goes 33.40 South,
 2438.63 goes 5.69 ft S. to line 1/16
 where we set a 3x3x36 inch oak port
 with no B.T.S. (To set this port we went
 to Hub 2640 W of T/36-30 & chained East
 201.34 feet Then South 5.69 feet)

The SW Cor 32-137-30 should stand
 5694 lbs = 3758.04 feet W. of NE Cor
 6-136-30 Gout ch but as the total
 distance West to SW Cor 36-137-31 of
 14.318.04 Gout ch is really 14.321.49
 feet, or 3.45 ft long, Hub 3758.04
 goes W. 0.91 ft to Hub 3758.95 W
 of NE Cor 6-136-30 as Hub 14.321.49 goes
 33.40 ft S, to SW Cor 36-137-31, Hub 3758.95
 goes S. 8.77 ft to line SW Cor 32-137-30
 New B.T.S. as follows Magnetic var 8'46';
 Oak 8.844° 38'E 6.92 feet to nail head,
 only one. (To set this point we chained East
 from Hub 3960, of T/36-30, 201.05 feet
 Then S. 8.77 ft.)

The S.W. Cor 31-137-30 should stand
 9038.04 ft Gout ch W of NE Cor 6-136-30
 but as the total chain of 14.318.04 Gout ch
 W to SW Cor 36-137-31 is really 14.321.49 ft
 or 3.45 ft long, 9038.04 goes W 218 ft
 to Hub 9040.22. As Hub 14.321.49
 goes S. 33.40 - Hub 9040.22 goes S 21.08
 ft to line SW Cor T/37-30

273

256 POMT (25) 137-30

Sec 4-08 Continued

At SW Cor T 137-30 we set New BTS Vig
Vn $8^{\circ}46'$ magnetic

Elm $8^{\circ}S 41^{\circ}42'E$ 27.18 ft To nail head
Ash $8^{\circ}N 45^{\circ}51'W$ 49.34" in line

(To set this port we went to Hub
9020.64 and chained West 19.58 ft to
Hub 9040.22 Then South 21.08 feet)

To put in the SW Cor 31-137-30
I set transit on Hub 7920 ft S. Near SW Cor
of Twp 137-30, being a point $1\frac{1}{2}$ miles S. of
the $\frac{1}{4}$ port on the W side of Sec 30-137-30

at this point line SW Cor of T 137-30
bears $S 7^{\circ}38'W$ 80.35 ft Then
going a mile North to Hub 2640 S. set
the line SW Cor of 30-137-30 $S 7^{\circ}38'W$
26.78 feet to line Cor New BTS as follows
Dead Bk Oak $12^{\circ}S 41^{\circ}38'E$ 26.56 ft

" Pop $12^{\circ}N 47^{\circ}56'W$ 40.03 "

to nail heads Vn $8^{\circ}46'$

To correct N. Bdy NW $\frac{1}{4}$ 31-137-30;
I set transit on Hub No 2659.14 W. of $\frac{1}{4}$ port-
on S. side of 30-137-30 True SW Cor of 30
bears $S 62^{\circ}17'W$ 33.60 ft Coming E to Hub 1320
we run $S 62^{\circ}17'W$ 16.68 ft where we set line
 $\frac{1}{16}$ port No BTS. To correct W. side 32-137-30

@ 5280 S of NW Cor of 32, True SW Cor 32 bears
 $S 24^{\circ}22'W$ 25.60 feet. 1320 goes $S 24^{\circ}22'W$
6.40 to line $\frac{1}{16}$ No BTS. 2640 S. goes $S 24^{\circ}22'W$
12.80 ft to line $\frac{1}{4}$ on W. side of 32-137-30 No BTS
3960 goes $S 24^{\circ}22'W$ 19.20 ft to line $\frac{1}{16}$
Port N. of SW Cor of 32-137-30 No BTS.

Going to $\frac{1}{4}$ on S side 32-137-30. We
found out how much our NTS preliminary
is off and quit for night.

I got in one day for owners of 32-137-30
P.O.M. Anderson & John Johnson got in
full day for Walden

(26) 32-137-30 257

Subdividing 5273

Saturday Dec 5-08

I am working for owners of 32-137-30
Vels Levang, Willie Nicholson, O. O.
Haugy, and, P. O. M. Anderson, John
Johnson & I worked all day.

To find the true E & W line of 32 I
set transit on Hub 5280 W. True $\frac{1}{4}$ port on
W side of 32 bears N $7^{\circ}50'W$ 33.50 ft (on
33.20 N and 4.65 W) to true $\frac{1}{4}$
Coming E to 2640 West, we run N $7^{\circ}50'W$
16.75 ft to Hub A. for Temp Cen of 32
on E & W line. Then;

Setting Transit on Hub 5280 S, on N & S
Cen line of 32, true $\frac{1}{4}$ port on so side
bears N $47^{\circ}15'W$ 44.90 feet, or 30.50
ft N, and 33.00 W, so that the depth
of the section N & S (rough chain) is
5249.50 feet At 5249.50 S, true $\frac{1}{4}$
on so side bears West 33.00 ft -

Then; Coming N to Hub 2640 S, we
run West 16.58 ft & set hub. B. on true
N & S Cen line of 32-137-30. Then running
North, we find that the true Cen of 32
is just $\frac{1}{2}$ inch West of the tack in
Hub "A" at which point we drive a
6 foot oak fence post marked.

"TRUE CEN of SEC 32-137-30"

Setting transit on Hub 2640 W of $\frac{1}{4}$ port on
E. side of 32, true center of sec sets
N $7^{\circ}50'W$ 16.75 ft - Coming E to 1320 W
true $\frac{1}{16}$ port goes N $7^{\circ}50'W$ 8.37 ft - at
which point I drive short oak stake for
true Cen of E $\frac{1}{2}$ of 32-137-30

Going W. to Hub 3960 W. True $\frac{1}{16}$ port
goes N $7^{\circ}50'W$ 25.11 ft - at which pt
we drive a square T. am post for true
Cen of W $\frac{1}{2}$ of 32-137-30 N. 13 TS.

Setting on Hub 1950 S of $\frac{1}{4}$ on N.
side of 32 we run West 12.26 ft - set
stake marked True N & S Cen. line of 32.

258

(27) 137-30 & 32

Dec 5-08 Continued

@ 1320 S of $\frac{1}{4}$ port on N side of 32-137-30
 W. in West-8. 30 ft - & set another stake
 for line N & S. Cen line of 32

Reg @ $\frac{1}{16}$ port E. of SW Cor 32 W. in
 N. @ 1320 Hub @ 2640 Hub True $\frac{1}{16}$ in. Cen
 of $W\frac{1}{2}$ of sec. sets $N 72^{\circ} 27' W$ 7.10 feet. 1320
 goes $N 72^{\circ} 27' W$ 3.55 ft and set oak
 stake for line Cen of $SW\frac{1}{4}$ 32-137-30

Reg @ $\frac{1}{16}$ W of of SE Cor 32 W. in N 80°
 @ 900 Hub 1320 back in log 2640 (Rough ch)
 line $\frac{1}{16}$ in Cen of $E\frac{1}{2}$ of 32 sets west 15.55 ft
 going back set 1320, 7.77 ft West with
 stake marked "TRUE LINE" @ 900 run west
 4.65 ft set stake marked "true line" being Jacob
 Johnson's West boundary got in full day
 for owners of sec 32-137-30 which
 finishes up my work for them.

My account is as follows:-

POM Anderson, Jacob Johnson, John
 Johnson, John A Johnson, Nels Lewang
 To John W. Curo & Co.

Nov 14-08	worked one day	10	Hour
" 16 "	" " "	10	"
" 17 "	" " "	10	"
" 18 "	" $\frac{1}{2}$ "	05	"
Dec 2	" " one day	10	"
" 4	" " "	10	"
" 5	" " "	10	"
		<u>6 1/2 days @ 4 =</u>	
		\$26.00	

Nov 25th 08 Jacob Johnson paid POM
 Anderson \$2.80 on account see page
 248 = 17 Nov 25-08

Sunday Dec 26-08

I and P. O. M. anderson, corrected a few stakes and this finishes up my work for Walden and the owners of sec 32-137-30 No pay today.

My account against Walden is as follows:-

Nov 10-08	Coming out - one day	10. Hrs	4.00
" 12 "	worked	" 10	4.00
" 13 "	"	" 10	4.00
" 18 "	"	1/2 " 05	2.00
" 19 "	"	one " 10	4.00
" 20 "	"	" " 10	4.00
" 21 "	"	" " 10	4.00
" 23 "	"	" " 10	4.00
" 24 "	"	" " 10	4.00
" 25 "	"	3/4 " 7 1/2	3.00
Dec 3 "	"	one " 10	4.00
" 16 "	one day going home	10	4.00
			<u>\$45.00</u>

260

(29) 6-136-30

Hauggard & Co

Monday Dec 7-08

I am working for the owners of sec. 6-136-30 Sub. deciding the sec. A.M. Hauggard & Finnie helping. The $\frac{1}{4}$ N side 6-136-30 should stand 2640 ft SW of NE Cor but as total distance west of 14.318.04 ft is swen. 36-137-31 40 ft ch is really 14.321.49 ft or 3.45 ft long, but 2640. goes West 0.64 ft to Hub 2640.64 and as the line SW cor of 36-137-30 sets 33.40 ft S. of Hub 14.321.49, Hub 2640.64 goes 36.16 ft $\frac{1}{4}$ port on N side 6-136-30 being a nail driven into the S.E. edge of a short sawed off 10. inch Tarn stump. No B.T.S. Necessary

The $\frac{1}{16}$ E of NW Cor 6-136-30 should stand 3960 ft W of NE Cor 40 ft ch but as the total distance of 14.318.04 ft " is really 14.321.49 ft W to the SW Cor 36-137-31 or 3.45 ft long, 3960 goes West 0.95 ft to Hub 3960.95. As Hub 14.321.49 goes 33.40 S 3960.95 goes 9.24 S to true $\frac{1}{16}$ E of NW Cor 6. Set stake $\frac{1}{16}$ with New Bearing trees or fallows: U 8° 46' Mag Oak stump $\frac{1}{6}$ N 10° 41' E 54.80 ft to Nail head Balsom 6 S 76° 30' E 75.90 ft

The NW Cor of 6-136-30 should stand 8304 lks = 5480.64 ft W of NE Cor but as the total ch of 14.318.04 ft W is really 14.321.49 or 3.45 ft long, 5480.64 goes West 1.32 ft to Hub 5481.96. As Hub 14.321.49 is 33.40 ft to N. Hub 5481.96 goes S. 12.78 ft to true N.W. Cor 6-136-30 where we drive a $5\frac{1}{2}$ foot 4x4 Tarn post well into the meadow marked. TRUE NW Cor 6-136-30 " No B.T.S. Near

Aug 9 NW Cor 6-136-30 we run S. on 8° 30' on @ 1320 firm @ 1551 ft Hub Temp SW $\frac{1}{16}$ Cor to Lot N.E. 4. Sec 6. @ 2871.00 ft Hub Temp $\frac{1}{4}$ W side 6. true $\frac{1}{4}$ port sets N 49° 38' E 27.80 ft or about 18.10 ft N x 21.10 East

Kueffel & Esser Transit, Chicago Steel Tape. Hauggard & Finnie plumb & chain. Hauggard & Finnie worked all day Nels & Leung & Omer Swenson worked in A.M. I got in full day for owners of sec 6-136-30

At $\frac{1}{4}$ NW side 6-136-30 40 ft nail's call for:

Tarn 8357 E 9 lks = 5.94 ft

" 5 N 57 W 5 " = 3.30 "

We found them both but they are down and out by the roots

273

John W. Enns

(30) 6-136-30

261

Haugyarde & Co

Tuesday Dec 8-08

I am working for owners of 6-136-30
 Haugyarde, Finnle, Nuerson, Lewang worked in
 A.M. & John Johnson worked in place of
 Lewang in P.M. Beg @ $\frac{1}{4}$ (which is a 13. foot
 oak post) on W side 6-136-30 we run East
 on 5° @ 900 Tack in log @ 1320 Hub 2145 Hub
 4. H.E. of creek bank 2640 Hub 2850. 20
 tack in log (big Birch) @ --- tack in birch
 log @ 39600 Hub @ --- Tack in spruce @ ---
 Tack in pop. log @ 4522. Hub in W. edge
 of swamp 5280 pin @ out for night - I
 get in full day. Dinner with Finnle

I got \$54.00 from Cass Co. P.O.M.
 Anderson paid me \$8.00 being \$6.20 for
 John Johnson, and the \$2.80 he call-
 ected from Jacob Johnson

My wife went to Pine River with Mr & Mrs
 P.O.M. Anderson and paid the following bills
 E. S. Holman \$10.00 Bank 11.80 \$5.00
 Mrs. Gus Johnson for Cecyl's board \$5.00
 sent Mrs. T. W. Estabrooks \$5.00 Goul H.
 wood for my razor \$3.00

Sent John M. Smyth \$4.83 for steam
 cooker. Sent S. Eagle May & Co \$1.00 chair
 sent Barnard Mayer Co \$17.25 for cloth
 on easy payment plan. (Vogood) Paid
 Levi Hoover 800 for my woodman \$1000
 insurance. Paid Mrs. J. L. Leavens \$2.20
 gone Cecyl \$1.10. Bought groceries \$2.22
 making in all paid out \$53.20.

John W. Curo

- 273

262

(31) 6-136-30

Hagyard & Co

Dec 9-08 Wed

I worked all day for owners of 6-136-30
Hagyard, Leasing, Fines, Successor worked two
all day. Beg @ 10 am No 5280 E. at last
night we will run E on 5495.40 Time $\frac{1}{2}$
on E side of 6. sets North 38.90 ft The depth
of 6-136-30 Goat chain in
1523.71 ft + 3960.00 ft = 5483.71 feet
Ex W this can be ch (Calculated) but
we find the true distance to be 5495.40
on 11.69 ft long The line Ex W can line runs
on about $5^{\circ}26'$ Magnetic variation at
this time. and the center of the $N\frac{1}{2}$ of
6. should run Ex W on about $6^{\circ}20'$
Going to $\frac{1}{4}$ on S side of 6-136-30

Goat nails each for:
While Birch 8 N 50 E 25 lbs = 16.50 ft
" " 9 S 10 E 17 " = 11.22 "

We set the line $\frac{1}{2}$ from both BTS which
are green + standing, by flat measure
from face of B.T. figures, after which the
line stands as follows. $8^{\circ}00'$

WB 8 N 50° 50' E 25 lbs $\frac{1}{2}$ to face of BTS.

" 8 S 5° 35' E 17 "
Beg @ $\frac{1}{4}$ on S side of 6, we run N 8° 35'
@ 1820 Hub @ 2640 Hub @ 2647.60 we
cross our Ex W cut out line, 2875.30 ft E
of $\frac{1}{4}$ post on West side

Chained 7. Chains North + quit for
night

Over night at home still in the view
lent at Anderson with my wife.

Huangyandico

Thursday Dec 10-08

I am working for the owners of sec
6-136-30 Olthausyards Morris Farm
Jens Svenson. Nels. Leung & I worked all
day. Oscar Olson cut brush in PM
Also I chained perfect

Reg @ pm No 7. at least night and con-
tinued North on Cen line of 6. @ 3960 Hub
@ 4332.20 Tack in Tam log @ 5280 stake
@ 5702.00 True $\frac{1}{2}$ port on N side of 6. sets
West 46.10 ft To correct N & S Cen line
of 6. 5702. goes West 46.10 ft
4332.20 " "
3960 " "
at 2669.10 True center of sec sets
West.

2640 goes West 21.34 ft
2453 " " 19.83
1320 " " "

To correct E & W Cen line of 6-136-30
@ Hub 5495.40 E. True $\frac{1}{2}$ on E side of 6
sets North 38.90 ft 4522 (in swamp)
goes N 32.01 ft. 3960 goes N 28.03 ft
2640 goes N 18.69 ft
2145 N --- 1320 N --- 900 N ---

I took the crew to the true $\frac{1}{2}$ port so of
NE cor of 6 and started them cutting brush
another new line west on 6° 20' on
and then Ole and I went and put in
the center of the section by intersecting
the N & S and E & W lines. We set transit
on Hub 2640 N, and ran W 21.34 ft - Hub.
Then going to tack in log @ 2453 N,
we ran west 19.83 ft to true N & S line
then ran a line N & S thro Hub 19.83
and 21.34. Setting transit on Hub

2856.20 E. ran N 20.22 ft to true E & W line
Then West 3.90 ft to true center of 6-136-30
set 4x4x50 inch maple post - BT 50 in
Tom stump 14 NW 21.35 ft. Put line 16,
SE 9.57 ft to Tack head. Out for night

264

(33) 6-136-30

Haugyard & C

Friday Dec 11-08

I am working for owner of sec 6-136-30
 at a point - 2852.30 ft E of $\frac{1}{4}$ on W side of 6
 True center of section sets North 20.19 feet
 at a point 2669.10 ft N of $\frac{1}{4}$ on
 South side of 6, True center of sec sets West
 21.58 ft To correct $\frac{1}{16}$ S. of NW cor 6

Begin @ NW cor of 6, we run S. @ 1551 ft
 Hub. Temp $\frac{1}{16}$ @ 2871 Hat. True $\frac{1}{4}$ port
 sets N 49° 38' E 27.80 ft or about 18.10
 ft N. and 21.10 East. Correcting back
 Hat 1551 goes N 49° 38' E 15.102 ft
 to line $\frac{1}{16}$ where we drive a good stake
 as the total distance of 2871 feet from
 from the NW cor of 6-136-30. S to the $\frac{1}{4}$ port
 is 18.10 ft short, the west side of 21.4
 sec 6-136-30, of 1551 ft 4 out ch is 9.78 ft
 short making the length 1541.22 ft
 as the total length of the west side
 of NW $\frac{1}{4}$ of 6, of 2871 ft 4 out ch is 18.10
 ft short, the west side of the SW of NW
 $\frac{1}{4}$, of 1320 ft 4 out ch is 8.32 ft short
 making total length 1311.68 ft

To set cor of W $\frac{1}{2}$ of 6. According to
 calculations made from 4 out & field
 notes, the W $\frac{1}{2}$ of 6 at the $\frac{1}{4}$ port is
 1523.73 ft + 1320 ft = 2843.73 ft
 I find the true distance to be 2852.30
 feet or 8.57 feet longer than 4 out ch

Begin @ line $\frac{1}{4}$ on W side of 6 We run
 E 5° on @ 900 back in log @ 1320 Hat
 @ 1523.73 Temp $\frac{1}{16}$ port @ 2843.73, Hat
 True center port sets 8.57 ft East to
 Hub 2852.30, then North 20.19 ft

Correcting back - 1523.73 goes
 East 4.59 ft to Hat 1528.32 Then
 North 10.82 ft to line cor of W $\frac{1}{2}$ of 6.

Begin @ Hat 1320 E we chain E 208.32
 ft to Hat 1528.32 Then N 10.82 ft to line
 cor of W $\frac{1}{2}$ of 6-136-30

273

Dec 11-8
Continued

(34) 6-136-30 265

Haug & Co

at the true center of W $\frac{1}{2}$ of 6-136-30

we set new BTS viz U 8'46'

Bench 6 NE 4.58 ft to lock head

Pip 10 SW 9.71 "

Haug, Funnis & I worked in a.m. My wife
and I took dinner with Funnis

To set the Cen of E $\frac{1}{2}$ of 6-136-30

We begin at Hub 3960 E and chain East 213.85
ft to Hub 4173.85 Then North 29.55 ft where
we placed the true center of E $\frac{1}{2}$ of 6-136-30
BTS viz

P.M. Querson, Olson, Haugyaards, & Funnis
& I worked in P.M. Beg @ true $\frac{1}{16}$ pt
S of NE Cor 6-136-30 W then West $6^{\circ}20'0''$
Haug & Querson chaining (rough) @ 1320 Hub
2040 Hub 2740 Hub. 3960 Hub 4063.
Tack in log. 5280 pin. 5491.50 W.
True $\frac{1}{16}$ pt on W side of NW $\frac{1}{4}$ of 6,
sets North 15.53 feet. We set the
true $\frac{1}{16}$ pt So of the NW Cor 6, as given
on page (33) = 264. and quit for
night. I got in full day for owners
of Sec 6-136-30. Over night at home
in tent.

266

(35)

6-136-30

Haug & Co

Saturday Dec 12-08

Laid up in A.M. on account of storm

P.M.

I am working in P.M. for owner of 6-136-30
 To correct E & W Cen Line of N $\frac{1}{2}$ of 6, H & Co
 1320 goes N 3.73 ft 2640 goes N 7.47 ft
 2740 goes N 7.57. 3960 goes N 11.20
 4063 goes N 11.49, H & Co 5491.50 goes
 N 15.53 ft 1 $\frac{1}{2}$ line $\frac{1}{16}$ S of NW Cor 6-136-30
 I set the line Cen of NW $\frac{1}{4}$ of 6-136-30
 by intersecting the N & S, E & W line lines
 I set chain 1 on line NE Cor of Lot 4,
 and focused telescope on true Cen
 of W. $\frac{1}{2}$ of sec 6 and set H & Co two
 on line N & S etc. Then corrected up
 the rest of the E & W center line of the
 N $\frac{1}{2}$ of 6, but only set corners only
 at the center of the NW $\frac{1}{4}$ of 6
 the rest of the mile E cor, I only set
 line stakes and not 40 corners
 as it was not necessary or
 Haugyard owned 3. forty, am a sting
 on his side and Frinter owned 3.
 forty in a line on the other side of
 the line going to H & Co 3960 E on
 E & W Cen line of 6. we chained 213.85 ft
 E. Then 29.55 N where we placed line
 Cen of E $\frac{1}{2}$ of 6. got in one half day
 for owner of sec 6-136-30 Haugyard & I
 done all the chaining

Sunday Dec 13-08

I made out John Johnson's account
 against Walden Twp 7 $\frac{1}{2}$ days @ 15⁰⁰ =
 \$11.25. Made out John Alfred Johnson's
 account against Walden 3. days @ 15⁰⁰ =
 \$4.50 I laid up Lew and I shot
 9 rabbits over night at home in tent

273

John W. Curo

Hong T Co

Monday Dec 14-08

I worked all day for owners of sec 6
136-30 Houghgale, Olson, Finnie.

Swenson & I worked all day
going to the SE cor 6 being the cor to

Sec 5-6-7-8-136-30 youth notes call for
white Birch 7 N 57 E 31 lbs = 20.46 ft

Birch 8 S 67 W 18 lbs = 11.88 ft

WBch 10 S 58 E 40 " = 26.40 "

Q P 18 N 65 W 25 " = 16.50 "

We found all of the trees plainly marked
and standing but the "Jack Pine"
called for in the notes is a white pine
and considering that we could not
make it check out for measurement
with the other 3 trees, I was compelled
to pass it up and not use it.

I first put the corner from flat-
measurement from face of B & S
on the three Birch, and it all checked
out fine but the old white pine
I could not use, because the youth
notes call for "Q P". After setting
transit on my new corner, the
trees stand as follows: 08° 46'

WB. 7 N 63° 20' E 31 lbs = 20.46 ft

" 10 S 54° 53' E 40 " = 26.40 "

" 8 S 77° 10' W 18 " = 11.88 "

WP 18 N 72° 22' W 19.75 "

Reg @ SE cor 6 run W 6° V @ 7.15 Tack in log @ 1320 Hub 26.40
Hub Tack 1/4 S. Side 6. Sets N 50° 7' W 14.60 ft - Correcting
back, Hub 1320 goes N 50° 7' W 7.30 ft to Tack
1/16 W H SE cor 6. Reg @ 1/16 W H SE cor 6 run N 85°
@ 829 Tack in stump 1320 Hub 14.10. 35 Tack in
old log 26.40 Hub, Tack Cen of E 1/2 of 6 sets N 84°
52' W 19.46 ft. making the distance rough Ch
about 1.80 ft long. Tack in full day for
owners of sec 6.

John W. Cress
273

Tuesday Dec 15-08

To put in Cen of S $\frac{1}{2}$ of 6-136-30: at a point on our V & S preliminary line 2669.10 ft N of $\frac{1}{4}$ on S. side of 6. True Cen of this sec. sets west 21.58 ft. Correcting S. Hot 1320 goes N $\frac{1}{4}$. 55 ft To Hot 1334.55 Then W 10.79, where we place line Cen of S $\frac{1}{2}$ of sec 6.

Reg @ $\frac{1}{4}$ on E side of 6. run South: @ 1320 Hot, 2040 Hot True SE Cen of 6 sets N $36^{\circ}20'E$ 34.50 ft Correcting back 1320. goes N $36^{\circ}20'E$ 17.25 ft to line $\frac{1}{16}$ N of SE Cen to 6 Haug & S chained perfect.

Reg @ $\frac{1}{16}$ N of SE Cen 6. just set wire run west 5' 45" on @ 1320 (rough ch) Hot, 2040 Hot True $\frac{1}{16}$ being Cen of S. half of 6 sets N 0.46 ft Correcting back 1320 goes N. 0.23 ft which places it on a line E & W, cen line of SE $\frac{1}{4}$ of 6. Haug yard & Iverson ch.

Reg @ $\frac{1}{4}$ on S. side 6. run W 6' on @ 1320. Hot, Haug, Finnie, Olson, Larson, Lewang & I worked all day for the owners of sec 6-136-30

Dec 16-08 Wed

Haug yard, Olson, Finnie, I & Lewang worked all day for owners of 6-136-30

Reg @ Hot 1320 W of $\frac{1}{4}$ post on S. side of 6-136-30 W. run W continued line @ 2040 fm @ 2640 + 2. cas + 37.30 ft = 2857.30 Hot (90 foot chain) True S W Cen 6 sets N. 47.00 ft as the 40 ft chain calls for 1320 + 1526.58 ft making 2846.58 I find true chain 10.72 ft long Correcting back 1320 goes west 4.9 ft to Hot 1324.97 Then N. 21.79 ft to line $\frac{1}{16}$ post E of SW Cen of 6-136-30

(38)

6/136-30

269

Haug & Co

Dec 16-08 Continued.

at the SW Cor of 6-136-30 4 out-nodes
call for:

Torn 10 N 46 W 4 lbs = 2.64 ft

" 12 S 3° W 30 " = 19.80 "

" 10 S 25° E 20 " = 13.20 "

Spruce 6 N 48 E 44 " = 29.04 "

We find the NW BT & SW BT standing
plainly marked but the others are gone
except the roots, which are not marked.We find it impossible to set the stakes
by measurement from the two Bearing
lines as it would throw the SW
BT too far East and over into another
Township and as we positively cannot
do this, we are compelled to ignore the
NW BT as to measurement and courses
except that it set the line stake as far
West as it is possible to get it
and at the same time leave the SW
BT over in its own section.I set transit on my new post and
the old BTS stand as follows: N 11°

Torn 12 S 3° W 30 lbs = 19.80 ft - (To Tank)

" 10 N 46 W 3 3.78 feet head

I put a lock in a new BT. as follows

Spruce 6 N 63° 28' E 14.40 ft

This is the best I can do.

Going to the true Centre of W 1/2 of 6

We run S. @ 1320. @ 2640 Hat

True 1/16 part E of SW Cor of Sec 6. sets

S 3° 35' W 29.06 ft

Correcting N. 1320 goes S 3° 35' W 14.50
where we place the true cen of SW 1/4 of
6-136-30 N. BTS.Going to the Cen of SE 1/4 of 6 we
place a stake at its correct location
by intersecting the true E & W
N & S Cen lines of the quarter.

John W. Curo

273

Sec 16-08 Continued

Setting transit on Hub 1320 N of the $\frac{1}{16}$ post W of the SE cor 16-136-30 We run $N 84^{\circ} 52' W$ 9.73 ft to find the line N & S line of the quarter.

Then setting transit on Hub 1320 W of the $\frac{1}{16}$ post N of the SE cor 16, we run North 0.23 feet to the line E & W line of the quarter and as the two temporary stakes are only two inches apart we drive tacks in some old logs to hold our line while we are setting out true center of the SE $\frac{1}{4}$ 16-136-30.

I set the final tack with my eye and the tape line as the stakes are too close together to use the transit.

Quit for the night. This ends the subdivision of Sec 6-136-30. I have set every corner, $\frac{1}{4}$ corner and $\frac{1}{16}$ cor in the section except:

The $\frac{1}{16}$ W of the NE cor, The center of the NE $\frac{1}{4}$, The cor of the N $\frac{1}{2}$ and the $\frac{1}{16}$ N of the SW cor.

Ole O Haugyaards and I chained it all with a plumbob and steel tape and I run my lines with double center's tuffel & Esser first class transit in perfect adjustment. I had no rest but not all of the lines re-chained and am sure they are correct. We used a 90 foot tape.

M. Finnie paid me \$9.40 his share in full
 Ole O Haugyaards " " \$9.40 " " " "
 John Leong " " 9.40 " " " "

Jaer Quelson and John W. Sjogrinson will pay me \$9.40 each as soon as they get to town. Vels Leong paid me \$5.20 in full for his part of the survey of 32-137-30.

(40)

6-136-30

271

Dec 16-08 Continued

Olaf Hauggard paid me \$2.40 bal in full for Jacob Johnson's share of the subdivision of Sec 32-137-30

Overnight in tent This ends my work here.

My bill against the owners of Sec 6-136-30, being Ole O. Hauggard, Marius Fennie, Iver Laerson, John Gjorginson, and John Lwang is as follows

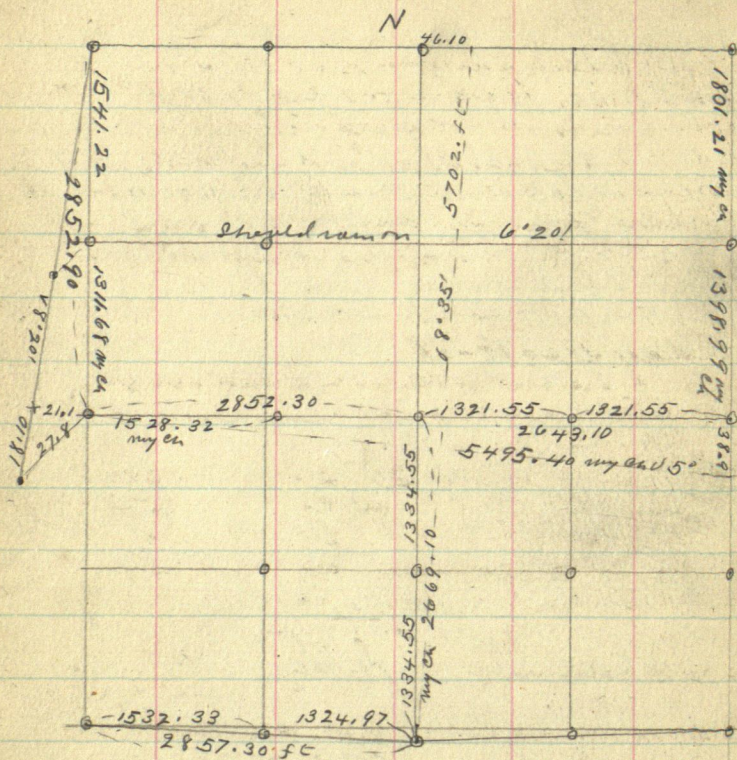
Nov	25-08	worked	1/2 day	P.M.	1.00
"	27	"	one day		4.00
"	28	"	"	"	4.00
Dec	1	"	"	"	4.00
"	7	"	"	"	4.00
"	8	"	"	"	4.00
"	9	"	"	"	4.00
"	10	"	"	"	4.00
"	11	"	"	"	4.00
"	12	"	1/2	" P.M.	2.00
"	14	"	one	"	4.00
"	15	"	"	"	4.00
"	16	"	"	"	4.00
					<u>47.00</u>

John W. Curran

273

272.

(41)

 Plat of
 Sec 6-136-30


273

Walden

Dec 17-08

We pulled down our new tent and come
to Pine River. I got in one day for Walden Twp
"going home" My wife rode in with
all O Hauggards and P.O.M. Anderson & I
brought in the tent and outfit. Had
fearefull storm all day. P.O.M. for dinner
over night at home in Pine River

Friday Dec 18-08

I went to Beaumont and bought
Horded and Deach a new suit of clothes
of John Carlson

My suit cost	\$ 22.50	(25.00)
--------------	----------	---------

Horded	4.50	(5.00)
--------	------	--------

Moccasins for Horded	1.20	✓ 2.
----------------------	------	------

Collar, 20 Die 25 for me	.45	
--------------------------	-----	--

2 pr suspenders for both	0.00	
--------------------------	------	--

	\$28.65	
--	---------	--

I paid Carlson	15.00	
----------------	-------	--

		Bal due \$13.65
--	--	-----------------

Our new steam cooker arrived
from John M. Smyth Co of Chicago

Saturday Dec 19-08

Town Board of Walden met all members present except Framling. I put in a bill for \$57.00 as follows:-

Town of Walden to John W. Custer
Engineer work in survey of wagon roads
in Tap 137-Page 30 Nov 10-1908 to Dec 17-08
worked $14\frac{1}{4}$ days @ \$4.00 = \$57.00

They gave me Tap order No. 756 for \$60.00 because there will be a discount on the order that will make it worth \$57.00

I gave the \$60.00 order to Horns Hanson to be cashed and as Hanson did not have money enough in the safe to pay it he will send the order tonight to Walker and have money back to pay it.
Monday

I paid P.O.M. Anderson \$6.80 to balance our account for wood, board &c. This pays me up for \$5.20 against John Alfred Johnson's part of the survey of 32 and I jump accounts with Pat and really do not charge him anything for his part of the survey.

I worked on records and got in a full day for Cons & Crow Wing Co. on Judicial Road
Milroy 12 @ 8¢
one day

196
8400
496

Sunday Dec 20-08 Haid Road
in Pine River

Recorded ⁽²⁾ Jenkins 275
137-29, Cross & Crow Wing

Monday Dec 21-08

I am working for Cross and Crow wing Counties on Judicial Road.

This is my 2nd day. John Lee and I went to Jenkins on a M train and back on P.M. train. Geo Newman helped us. Jim Ellis helped but did not do much.

Going to the Cor to sees 27-28-33-34 137-29. Gouthro's call for:

BP 6 N 43 E 23 lbs = 15.18 feet
" 6 N 38 W 37 " = 24.42 "
4 P 12 S 31 W 36 " = 23.76 "
130 6 S 64 E 50 " = 33.00 "

We found the NW 13T. With stump plainly marked and did found the root of the SW 13T but the other two have been graded out of the road. We set the true corner from flat measurement from fact of old 13TS and drove a 7/8 inch iron 2. feet long into the ground. The iron is a piece of an old bed steel.

We set transit on our true iron corner after which we drive a tack in the old 13T. stump. Tack bears N 38° W 24.42 feet to Tack head. A Tack in the corner fence post bears N 38° 20' E, 38.75 feet to head & 8° 46' to new bearing object.

Going to Cor of sees 21-22-27-28-137-29 Gouthro's call for:-

BP 6 S 41 E 36 lbs = 23.76 ft-
" 5 S 64 W 35 " = 23.10 "
" 12 N 51 W 15 " = 75.90 "
Red Oak 5 N 75 E 41 " = 27.06 "

We found all of the 13TS but none are plainly marked except the NW & SE. We find a 4x4 oak stake set by W H Hallett to be correct for the true cor and we drive a tack in the stake at the true point.

276 Recorded ③ Jenkins
137-29, Can & Crow Wing

Dec 21-08 Continued

We set transit on line on 10 sections
21-22-27-28-137-29 after which a lock
drove in the old NW 1/4 bears N 50° 47' W
76.08 feet New BTS as follows

GP 12 N 54° 51' E 49.70 ft $\sqrt{8.46}$ T
" 10 S 79° 33' E 44.10 " Tack heads

Quit for night and caught the PM
train home to Pine River

John P. Leaf, H. P. Hanson, Geo Newman
and I got in our 2nd day for
Can & Crow Wing Co.

Jim Ellis got in one day today

I sent Mrs T Westbrooks \$5.00 7 addrs
\$5.00 NW Hicks \$5.00 Jewett & Son \$2.50
Publishers Collection Agency \$2.50. Keuffel
and Esser Co \$2.22. Paid a \$ while
65¢ freight on steam cooker and 90¢
express on box sent to Hubbard
Paid Wibben & Hill \$20.98 to bal
account in full to date

I got the balance of my \$57.00 from
Hans P. Hanson and paid E. S. Hol-
man \$5.00 on rent.

Esther Burrell arrived
Lew got a letter from her friend

One day for Can & Crow Wing	\$4.00
PR to Jenkins & back mileage	96
	<hr/> \$4.96

(4)

137-29

277

Record

Jenkins

Cons + Crow Wing

Tuesday Dec 22-08

I am working for Cons + Crow Wing Co
on judicial road. GP Leaf, Geo Newsum
HP Hanson, Jim Ellis, Joe Grover and I
got in full day. Leaf, Grover and I

went to Jenkins on hand cor. & saw some
down on am train dinner with Wesley

Selling transition line NW cor 27-137-29
we run so without lileoscope focused

on line SW cor of 27. @ 930 feet enter
v bend of 10 foot creek. Then up stream

@ 967 leave creek runs East @ 1320
Hub @ 2640 Hub @ 3530 cross 6 foot

Creek Bear East @ 3960 Hub

@ 5280 Hub True SW cor of 27 bear
south 28. 40 feet Corveling rock

3960 goes S 21.30 ft drove 7/8 iron, fine
told bed steel for line 1/16 cor

2640 goes S 14.20 ft where we drove
7/8 inch piece of iron bed steel for

line 1/4 post on west side of 27-137-29

1320 goes S 7.10 ft drove 7/8
inch piece of iron bed steel for

line 1/16 post. Quit for night

Over night with Lew at Jenkins

This is our 3rd day for Cons +
Crow Wing

@ 1/4 post on West
of 27-137-29 last
mole casing
1306 N 32 W 53 dls
N 12 N 72 E 181"
gone

278

⑤ Jenkins
137-29 Cors x Crow wing

Wed Dec 23-08

Leaf, Newman, Ellis and I got in full day
for Judicial road Beg @ NW Cor 27/137-29
run N. rough chain @ 1320 stick @
2640 Hub $\frac{1}{4}$ post bet 21 and 22, Goat
mole call for:

BP9N32W16. BP9S53E34 gone
Continue N @ 3960 Hub, 5280 Hub true
Cor sets west 135. feet alt Cor 15 15-16
21-22-137-29 Goat mole call for:

asp 6 S 11 W 36 lbs = 23.76 feet

NP 15 S 52 E 20 2 lbs = 72.92 feet

asp 12 N 61 W 228 " = 150.48 "

"No lines in sec 15."

We found the stump of the SE BT. plainly
marked from which we set the true
corner 8' 46' face of BT. The other
BTS are gone. We set new BTS viz

JP 12 N 59 E 37.50 feet to Toak heads

" 12 S 57 W 9' W 39.63 ft Ver 8' 46'

Packing train half a mile south
I worked on line between the true
NW & SW corner of sec 22. and set a
line of stakes the whole mile marked
"TRUE SEC LINE, Road Cen" Caught PM
train to Pine River. Grover did not
work today on account of a cold back
This is my 4th day for Cors x
Crow wing. Corncries over my hat at
home in Pine River worked. 4 cc

Recorded

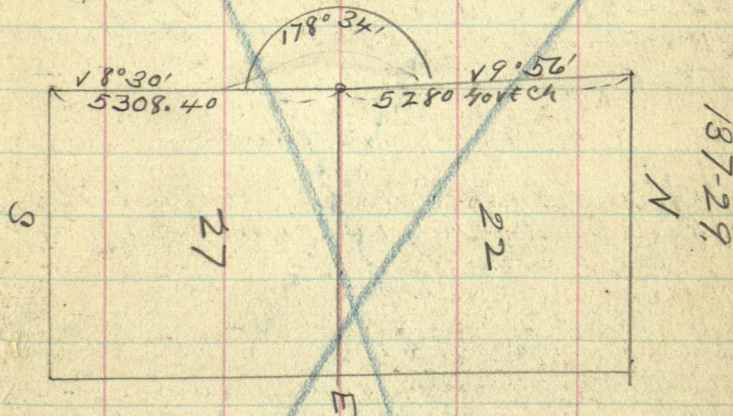
Recorded ⑥ Jenkins

279

187-29

Thursday Dec 24-08

Am working for judicial road
 Cor & Crow Wing Co's (Making calculations I find that the West Boundary
 of sec 22 runs on 1°26' or more
 than the West Boundary of sec 27-
 187-29 which would make about
 135 feet in a mile



Pine River Min Jan 1-09

Cor & Crow Wing Counties Minnesota
 to John W. Curo, Jr.

Engineer work in survey of judicial
 highway on County line between Secs
 21 & 22 and 27 & 28 - 187-29

Sec 19-08	Worked one day	4.00
" "	Twelve miles surveying road	.96
" 21	Worked one day	4.00
" "	Twelve miles	.96
" 22	Worked 4.5 miles	96. -
" 23	" 4" "	96
" 24	" 4" "	96

Plat for Cor Co 2.00
 Making plat for Crow Wing 2.00
 \$ 28.80

Lawyer & I went to Hockensack on P.M.
 train.

280

Hackersack

Friday Dec 25-08 Christmas
 Lew, Cecyl & I met Gladys
 who came down from Northville
 and Harold who is staying at
 Hack and going to school.

We took Christmas dinner with
 Grandma & Grandpa Cuss.

Ils and Harold are staying at
 Hubbard with Grandma & Grandpa
 Estabrook.

Pine River

Sat Dec 26-08 Hackersack to Pine
 River and brought all the kids,
 sleds & horse.

Pine River

Sunday Dec 27-08 Staid home
 at Pine River

Pine River

Monday Dec 28-08

Gladys took sick just as we
 had ordered a team from Tom Wash
 to take our camping outfit to Leafville
 to make County Road survey.

We were all going, and had our bag
 suit packed. All staid home.
 at Pine River

Levels

①

Pine River
137 30

281

Forbs

Tuesday Dec 29-08

I worked all day for Eugene L. Forbs, taking
levels of the N $\frac{1}{2}$ NE $\frac{1}{4}$ 13. and E $\frac{1}{2}$ of E $\frac{1}{2}$
Sec 14 137-30. Rained. S. Pitterson helped.
Ran @ NE cor 14 W & run to along E. Ridge
stations are 200 paces apart.

Sta	+ S	HI	- S	ELEV	
13. NW 1/4	3.70	103.70	-	100.00	On top of a big stone
0			4.70	99.00	at NW cor 13-
1			4.40	99.30	137-30
2			3.82	99.88	
T.P.	3.71	103.59	3.82	99.88	Being Top of ice near
3			5.04	98.55	Sta 2.
4			5.04	98.55	
T.P.	4.87	103.42	5.04	98.55	on ice @ Sta 4
5			5.00	98.4	Being a point 250
6			4.18	98.6	Pets. W of Sta 4.
					Being a point in
					meadow 500 paces
					W of STA 4.
Ran @ Cor of NW 1/4, NW 1/4, 13-137-30 W & run E 80 Rods					
Then NE 80 Rods going over Hog back in 2nd level					
B.M. 1		105.03	5.03	100.00	on S corner of plat
0			5.00	100.	
1			5.00	100	
2			5.00	100	
T.P.	7.17	107.13	5.07	99.96	on Sec
3			4.00	103.13	on Hog back
T.P.	5.06	101.94	10.25	96.88	On line in E Meadow
4			5.06	96.88	
5			5.06	96.88	on ice near cor of
					N 1/2 13-137-30

Account for the day Forbs paid me \$ 3.00 for my
time over night at home

282 Walker ① Pine River
Quam

Wednesday Dec 30-08

Staid home, Caled. Gladys is sick
could not work.

Thursday Dec 31-08

Too cold to work Staid home Gladys
is still sick.

Friday Jan 1-09.

I got a telegram from Martin J.
Quam Reg of Deeds, to come to Walker
at once to transfer plats of Villages of Co. Co
into the plat book @ \$5⁰⁰ a day and extra
time I took P.M. train to Walker, Over
night with Madison I got in 1/2 day
for Quam 5 Hours

Saturday Jan 2-09

I worked all day for Quam and
got in 12 Hours Worked till 10.35 PM

Sunday Jan 3-09.

I got in 6 Hours for Quam and
worked in the evening on my County
Statement of "all moneys received"
by me during last year

Monday Jan 4-09

I gave in my statement of
amount received by me during 1908
to County Surveyor.

✓ ② Walker

283

Guam

Tuesday Jan 5-09

I worked all day for M J Guam drafting
Village plats in Big Co Record book.
Over night with Madison

Wed Jan 6-09

Still working for Guam.

Thursday Jan 7-09

Guam paid me \$ 27.75 for my
time and expenses. I paid Plect
Madson's clerk \$ 5.75 for my board
and caught the AM train home to
Pine River. It is very cold. Gladys
is still under her Buckford's care

I paid B E Wideman \$ 2.25 for
a cord of wood I got a week ago

Friday Jan 8-09

I worked in P.M. for Webber & Hill
Siorn White, Chas E Webber, Billy Ritten
and I put in the SW cor of 36-138-30
from one old SE BT. and drove an iron
pin at line corner. In driving the pin
we split a hub previously set by me
from the whole four BTS. Cut Rensen
half a mile. V & quit for night

I sent Speagle May 86 50¢
monthly payment on furniture.

284 Wicker ① Pine River
331 Hill P.M. 36-138-30
137-30

Friday Jun 8-09

I worked in P.M. for Wicker & Hill
Chas E Wicker & J Channing, I saw White as
Beg @ SW Cor Sec 36-138-30 Government
Val's call for:

BP 8 N 15 E 10 lbs = 6.60 feet

" 8 N 5 W 18 " = 11.88 "

" 10 S 25 W 10 " = 6.60 "

" 6 S 50 E 15 " = 9.90 "

All the bearing trees were green
and standing 3 years ago when I,

John Leef and others
were there. and we found the lines to

check out perfect for course and meas-
urement so we set a hard wood

hub 1 1/2 inches x 9 inches, well into
the ground and covered it up. Set it from
face of BT on 8° 46' Two years ago I

saw our same hub and again one year
ago. All the bearing trees are cut

down and gone except a short stump
of the SE BT so I set the transit on

this stump and run N 50° W 9.90 feet
and dig. We found our old hub

and drove an Iron pin 7/8 x 20 inches
well into the ground, through my
old Hub. Billy Ritter witnessed

our setting the stake and says that
W H Elwood has buried 4 brick

two or three rods either E or W from
my iron corner just set, which he

(Elwood) thinks is the true corner set
by measurement two miles E & W

Elwood's brick are wrong and
ought to be dug up.

Beg at this line SW Cor of
36-138-30 just set we run N 9° W

@ 1320 Hub @ 2640 Hub Turn 1/4 on W
side of 36 sets S 89° 20' W 18 feet

331

Jan 8 - Continued ② Pmis River 285

Webber & Hill 138-30

at which point we drive a flat 331!!
piece of iron 1 foot long, an inch wide,
 $\frac{1}{4}$ inch thick, a curl in $\frac{1}{2}$ ft.

At the $\frac{1}{4}$ post on W side of 36-138-30
Gout nolis call for

NP 12 S 80 W 28. lks = 18.48 ft-

BP 8 N 54 E 100 " = 66.00 "

We find the sowed off stump of the
SW BT plainly marked 'BT.' and
re-marked by WH Elwood.

From this stump I set the line
 $\frac{1}{4}$ iron V 8'46 measured from face
of BT. We set one new BT viz
GP 8 S 62°43' E 79.15 ft - To lock
head in tree.

We did not find the old NE Gout
BT mentioned in the notes, but the
SW NP. I have sowed lots of times in
the past 15 years or it is the only
one near.

Correcting back

Hub 1320 is to go

S 89°20' W 9 feet to line $\frac{1}{6}$ N of SW

Cor 36-138-30

Quit for night overnight
at home in Pmis River

Got in $\frac{1}{2}$ day for W & H. 82

286

③ Pine River

331

Saturday Jan 9-09

I laid up. Bert Fick
brought me a cord of Wideman's
wood. I paid Fick 25¢ and 10¢
drayage and am to pay Wideman
\$2.25 for the wood.
Laid up

Sunday Jan 10-09

Probably staid home

331

④ Pine River 287

36-138-30

PR Tap

331

Monday Jan 11-09

I worked all day for Webber & Hill
Leaf brought J. W. Glover Chairman
of Pine River Township to town, and
they decided to survey the N & S cen
line of 36-138-30 in order to get
their road located, where it is
already built in N $\frac{1}{2}$ of sec 36.

A. L. Fuller, Joe Dailey and I
Beg at a point 38.8 feet East and
7.80 feet N of the true $\frac{1}{4}$ on W side
of 36-138-30 we run N on 7.30' var

@ 1320 Hgt = 1327.80 N of true
 $\frac{1}{4}$ point @ 2640 Hgt = 2647.80 N
of $\frac{1}{4}$ point on W side of 36

@ NW cor 36-138-30 Goutnalis
call for:

Bk P 12 N 35 E 127 lks =
" P 12 N 31 $\frac{1}{2}$ W 54 " = } all as gone
Lead Pine 138 63 W 84. " =

Quit for night A. L. Fuller and I
got in full day for Webber and Hill
Joe Dailey got in full day for Wm
Stewart. Over night at home

331

288 331

(5) Pine River
36-138-30 PRTwp

Tuesday Jan 12-09

John P. Leet, Ace Knover and I got in
a full day for Pine River Township and
all we done was to "dig up" the old Hub
we once set for the line SE corner of
36-138-30. We built a big fire and dug
finally found it and drove a 1. inch
gas pipe, with steam cock on top and

Then set the following Bearing lines
NP 3 stump N about 2° W 46.40 ft Tack head
By Oak 2 S " 2° E 26.30 ft No Tack
3 stump 6 S W 54.75 ft To tack head

Old B.T. stump NW 47.50 ft to Tack head

At this point Being The SE
Cor of T. 138-30. the old spot notes
called for:

NP 16 N 56	E 57. lkr =	37.62 feet
NP 18 N 71 W	67 " =	44.22 "
NP 16 S 42 1/2 W	56 " =	36.96 "
NP 16 S 69 1/2 E	61 " =	40.26 "

⑥ Pine River 289
36-138-30
PRTwp

331!!

Wed Jan 13-09

John Leaf and I worked all day
for Pine River Twp. Beg @ line. S W
on 36-138-30 We chained carefully East
@ 1920 Hub @ 2640 Hub on ice
3960 Hub, 5280 Hub Turn SE on 36
into East 39. feet. Correcting Back:

3960 goes East 29.25 feet to line NW
on of Gout Lot no 1. Sec 1-137-30

where we drove a little $\frac{3}{8}$ bolt 3 inches long
into the frozen ground and set new
Bearings as follows:

Fence post 6 Northely	38.12 feet
" " 6 S + E	29.97 "
GP 2 SW -	34.52 "

Temperature reduction
about 20° below 0° - 1.69 feet
on 132906

To back head

Hub No 2640 goes East 19.50 ft
where we cut a hole in the ice and drove
in a 30 foot GP Pine Pole for line $\frac{1}{4}$
on S. side of 36-138-30

Hub 1920 goes East 9.75 ft where we
set little wood plug in the snow for
line $\frac{1}{16}$ E of SW cor 36-138-30 being the
NW cor of Gout Lot No 3, of Sec 1-
137-30 with new Bearings as follows

Fence post 6 Northely	26.75 ft
GP 5 SW	54.87 feet
GP 6 SE	42.98 "

To back head We had nothing to drive
for corner.

Then going $1\frac{1}{2}$ feet on W. side of 36-
138-30, I took a few courses and
measurements 20 or 10 to be sure of the
true location of the $\frac{1}{4}$ post and quit
for night. We re-chained S side of 36, and
on here it is just 39 feet to line
The WC on W side of little lake is gone
Leaf & I got in full day for Pine River Twp

54.12

331

290 331

⑦ Pine River Trap
36-138-30Thursday Jan 14-09
A.M.

John Lief & I worked all day for P.R.
Trap. Char Kline worked $\frac{1}{2}$ day in P.M.
Lief & I went to $\frac{1}{4}$ on N. side of 36-138-30
where Government's call for:

BRION 3E 551ks = 36.30 ft

" 11S 2 $\frac{3}{4}$ W 60 " = 39.60 "

We did not find any Beaming trees as
they have been cut out for a road and
the stumps are either grabbed out or
covered up in the light 1. foot road
grade. We pass this up for
the present. See page.

and walk to M.C. No. 6, being the
meander point between Secs 25 & 36
138-30 on W. side of Norway Lake
where Government Field Notes call for:

Tom 4. S 42 W 15. lks = 9.90 feet

" 6 N 70 W 30. " = 19.80 "

We found the NW BT. dead but
plainly marked, from which we
set the line M.C. Post - 1 8' 46'
measured from face of BT.

We found roots of SSBT, dimly marked
which check out - for meander course

We drove a dry pole 20. feet into
the mud with BTs. Vigi.

Tom Stump 12 N 74° 20' W 42.85 ft

Tom Stump 6 S 33° 35' W 39.70 feet

To nail heads. Quit for dinner

P.M.

1 John Lief walked to Grover and
33 Chas Kline helped me in P.M.

33 Beg @ M.C. No. 6, just set - we run W 8' 30'
in swamp. @ 250 ft. end of solid ridge
4 rods wide N x S. Quit. Cecyl took
her first music lesson from Mrs
Anderson. Kline got $\frac{1}{2}$ day P.R. Trap
John W. Curtis

⑧ Pine River Twp 291
36-138-30

331

Friday Jan 15-09

ace grower, Chas Kline,
John Luf & I worked all day for
Pine River Twp Reg @ Stake on ridge
250. W of M P N 26-138-30 we continued
west @ 529.98 Hub in swamp $\frac{1}{16}$
temporary. John Luf & I channing plum-
bark line @ 529.98 + 586.14 = 1116.12
Hub on hill @ 1849.98 Hub E of Road
@ 1856.58 pin in road center Temp
 $\frac{1}{4}$ post N. side 36-138-30. (did
not look for B.T.S) @ 3183.18 Hub
on side hill Temp $\frac{1}{16}$ post @ 4509.78
plug in cen of M & U RR track Temp Hub
"B" @ NW Cor 36-138-30
@ 4509.78 + 50. feet = 4559.78 Set
Hub 50 feet West of RR Cen.

Quit for night - grower, Luf,
Kline & I got in full day for P.R. Twp
I paid Wideman \$ 2.25
in full for wood I sent
T.W. Estabrook \$ 1.07 to pay
freight on rocking chairs at
Methuena.

Sat Jan 16-09 Kline & I worked all day
Luf worked in P.M. for P.R. Twp
Reg @ Hub 38.80 71 East and 7.80 +
2640 = 2647.80 ft N of $\frac{1}{4}$ post W. side
36-138-30 We continue transit line N.
@ 1320 Set Hub N 2 3967.80 @ 2640 Set Hub
5287.80 Turn $\frac{1}{4}$ post bet- 25-26
138-30 Set N. 49. feet and W. 10.60 feet
Total distance bet $\frac{1}{4}$ on W side of
36, To $\frac{1}{4}$ on W. side of 25 is 1 mile +
56.80 feet or 56.80 feet long
Cecyl began setting type for Hulman & Fitch brot-
load 16 in wood from pikes yard.
John weaver

331

292

⑨ 36-138-30

Pine River Twp

Sunday Jan 17-09

Laid up. Kids went to Sunday school.

Monday Jan 18-09

Leef & I worked all day and
 Chas Kline worked $\frac{1}{2}$ day in P.M. for Pine
 River Township. Began @ true $\frac{1}{4}$ point
 in lake on South side of 36-138-30
 We run N 80° W @ about 600 feet leave
 lake @ about 900. H leave swamp
 @ 1320 Hub N of road @ 1988. Hub
 2640 Hub temp. cm to 36. @ 2803. 70
 Hub @ 3043 about cm of R.R. track
 bear NW x SE @ 3960 Hub.

Chained 12 chains North (90. foot Ch)
 and set marking pin about well
 into the ground to hold measure-
 ment till some future time. Then chained
 rough to about the North side of 36.

@ about 5280 pin True $\frac{1}{4}$ corner
 Ets about 32 ft. N. & 32 ft. East

Quit for night. This is the
 last day we will work for Pine River
 Township as Wheeler-Hill & Co will
 finish the sub-division of Sec
 36-138-30. I and Leef have got in
 7. days each for Pine River Twp

I worked for Pine River Twp Jan 11. th
 12, 13, 14, 15, 16, & 18 - 1909.

I worked for Wheeler & Hill

Jan 8, 1909. $\frac{1}{2}$ day in P.M. 5 Hours

" 11 " one day

" 19 " " "

10 "

10 "
 2 $\frac{1}{2}$ days.

John W. Curo
 Co. surveyor

Webber & Hill

(10) 36-138-30
Pin River

293

Tuesday Jan 19-09

Am working for Webber & Hill, Act
Skill, Wm Stewart & others. with
A. L. Fuller as man, John D. Leaf and I
Charming perfect Keuffel & Esser
transit & plumbob line 90 foot steel
Chicago type

Reg @ line $\frac{1}{4}$ port on West side of 36
138-30 we run East 8° or @ 660 ft Hub
@ 1320 Hub 1770 Hub on hill 2640 Hub
2740 Hub 3170 Cen of RR. 3960 Hub
5280 pin. True $\frac{1}{4}$ port on E side of
36, sets 84.70 feet East and 3,10.
ft South True depth of 36 E + W
is 5364.70 feet or 5293.20 ft
Gout chain = 5364.70 my chain,
being 71.50 ft long.

A. L. Fuller & I got in full day
for Webber & Hill. John Leaf got in
full day for Act Skill.

Rough Chain: Reg @ Cen of RR track
we chained South to SE Cor of Twp
138-30. distance is 727. ft
at $\frac{1}{4}$ port E side of 36-138-30 Gout
Vales call for: N P 15 S $83\frac{1}{2}^{\circ}$ E 92 lks =
60.72 feet. B P 4 N $86\frac{3}{4}^{\circ}$ E 74 lks = 48.84.5

James M. Canfield found both
the old B.T.S. and set the $\frac{1}{4}$ port 6.
or 8 years ago, when he surveyed a road,
L. F. Johnson also found both B.T.S. and
set a stake for Peter Halvingquist, who
built a fence setting the first corner
post, 33 ft N of the line stake. Then
run his fence N. to Norway Lake. He showed
me the point of the old stake, James
R. Kinder took a shovel and dug up
the point for me. I found that it
set just 33 ft 20 ft in line with the
fence

Over.

294

(11)

Pine River

Jan 19-09 Continued

The old B.T.S. have been dug out
 but, but-the fence corner is there
 from which I drive a 12 d nail in
 the frozen ground for line $\frac{1}{4}$ and set New
 B.T.S. viz: Stump 10S 51° 45' E 64.53
 feet to head of harness bolt driven
 in stump. Stump 5S 50.41 W
 60.68 feet. Fence post 6N 0° 45' W
 32.85 ft To nail heads 18° 46'

Wed Jan 20-09 Pine River Town Board
 met today. I made a plat of our survey
 and put in the following bill:-

Pine River min Jan 20-09.

Pine River Twp to John W. Currier.

Eng work in survey of wagon road in
 Sec 36 138-30 Jan 8th 09 to Jan 18-09
 worked 7. days @ \$4.00 per day 28.00
 Making plat of survey 2.00
 \$30.00

They allowed my bill and I got my
 check cashed @ 5% by E. S. Halman

They also paid me \$6.00 for
 $\frac{1}{2}$ mile of road surveyed several
 months ago East of Lindner Farm

Charles Kline gave me all his plats
 and road book and I have offered
 to put in all of the plats free.

I paid First Bank of P.R. \$5.70
 endorsed my own note of \$58.00

Bal due \$52.30 + interest I paid
 E. S. Halman \$10.00 on rent. Halman

took possession of the up-stairs
 Jan 1st 1909 and our rent will be
 less from that date. Grover charged
 P.R. Twp \$8.00 for survey, I ref chgd \$14.00
 Kline \$7.00 Some wireless & fuel \$50.60.

138-31.

(12) Danforths
Coss Co

295

Thursday Jan 21-09

Yesterday I wrote James S. Middleton
to make a survey of $3\frac{1}{2}$ miles of road
in 143-27-28. I also wrote Ed O'Donnell
& Jake Huffman to meet me at
Addison Danforths farm to put in Twp
Cn & finish road survey.

I am Nash drove Lew, Harold
Gladys & I to Danforths with our
new camping outfit and we
went into camp we all got dinner
with Danforth over night in the
tent. Cecyl began boarding at
Mrs Luss Johnson's Restaurant.

I & Harold are still out to
Hubbard with Grandma & Grandpa
Eslebrooks.

I got in one day for Coss Co

Friday Jan 22-09

Geo Danforth, Addison
Danforth & I hauled a load of
wood in a.m. and began survey
in P.M.

Beg @ line SW Cn 35-138-31. previous-
ly set by me from old BTS in
Swamp. we ran East 9° N.

K & E Transit 90 foot Ch' tape.
@ 1320 Hub in Swamp @ 1500 leave Swamp
Then thro sharp hills @ 1797.50 ft
Hub on hill 2040. Hub Temp $\frac{1}{4}$ on S. side
Sec 35-138-31 where Gout notes say:-
BR 12836W 22 lbs = 14.52 ft (some)
VR 24 N 66 E 73 " = 48.18 "
all got in full day for Coss Co over
night in tent. Addison chained

Saturday Jan 23-09

Geo Hanforth Ch. Geo Hanforth
& Jake Hoffman & men.

at 1/4 point on so side of 35-138-31.

I am satisfied I found the B.T.S.
but the marks were so dim I could
not swear to them so put it up
and from Hvt 2640 E, as continue

E to double center line plumb of Ch
@ 2758.40 Hvt on hill 3252.50 Hvt on hill

3390. enter slew 3440 leave slew

Quit for night rain & mist all day
could not see thro telescope Our
line strikes Geo Hanforth's house
ahead so we had to back up on 7/1-
set. all got in full day for
Cor. Co. All took dinner with Geo
Hanforth. Hoffman went home for
night

Sunday Jan 24-09 laid up.

Monday Jan 25-09.

Same crew
Setting transit on Hvt 1797.50

I re-run the transit line E to 30 as
to be sure it is straight. Back sight
on line 1797.50. 1320.00. 1797.50
O.K. 2640.00. 2758.40 took O.K. 3252.50 O.K.
at 3252.50 I offset 90° North 31 ft
and set back in log and set up
back shot. Then I continue my
original line E to and at 3960 I
set Hvt @ 4317.55 Hvt on
Caspers (or Hanforth's) yard about
100 ft W. of house and as my
line runs straight between the two
back chimneys I offset

Jan 25-09
Continued

(14) 138-31
Cor. Co

297

90° North 31 feet where I drilled hut
and set up transit. focus telescope
on back shaft set 31. ft North of Hut
3252.50, Transit the telescope and run
East 31. ft N of & parallel to my
original line. @ 5000 enter Swamp
5250 Hut in Swamp. Temp SW on
36-138-31 Gout Nolis says -

Lead Tam 12 N 70 E 9 lbs =
" " 12 N 67 W 13 " = 8.58 ft
" " 10 S 43 W 57 " = 37.62 "
" " 9 S 1 E 8 " = 5.28

We find no BTS. but find two
Tam Stumps SW & SE which check out
from a stake set by Guilford some
years ago. Richard says

he saw the stake years ago when
he & L. F. Johnson, forced from the S,
and dug it out of the mud.

I will look this up later but as
I cannot find any thing satisfact-
ory I continue my line East still
31. feet N of my original line

@ 5550. Lead Swamp. @ 7? Hut

@ 6600 Hut Temp 116 post 6650 enter
creek bottom 6790 Cen of 10. foot Creek
runs North. This is the W. Branch
of Bungo Creek 6840 leave Creek bottom
7920 Hut Temp 114 so side 36.

138-31. Out for night all got in
full day for Cor. Co. Dinner with
G. S. Dauforth. Address Chancel
Over night in tent

298

(15) 138-31
Coss Co

Jan 26-09 A.D. & Sch Geo.
 Hoffman & @ Hub 7920 being Temp
 1/4 S side 36-138-31 Gout Nolef say
 NP 6 N 140. 45 lbs = 29.70 ft
 "No other bear near" Gout. Continue E
 @ 8575 end S wps 8725 leave swp
 9240 Hub Temp 7/16. 10560 being two
 mile hub & Temp SW Cor 138-30 & where
 Gout nolis call for:-
 BP 10 N 28 E 160 lbs = 105.60 ft
 dead BP 12 N 34 W 115" = 75.90"
 BP 14 S 18 W 178 lbs or 78" lbs = 117.48
 or 51.48. put. also BP 7 S 26 E 191
 lbs = 126.06. put. all are gone Continue
 E out. @ 10930. enter creek bottom
 bears NE & SW @ 11280. Cen of creek.
 We run into Isaac Normans shade
 trees and little war-house and
 back off.
 Going back to Hub 9240 we run
 N 90° angle, 80 feet and set hub for
 back shot. Then going to 14th
 10560 we chain 80 ft. N. 90°
 and set off set Hub where we set
 transit and continue E out 111. ft
 N. and parallel to our original
 line. $31 \times 80 = 111$.
 @ 11190. enter creek bottom, @ 11460.
 Cen 10. foot creek run NE
 @ 11560. leave creek bottom @ 1283.70
 + 10560 = 11843.70 set temp 7/16
 Hub near Normans Quit for night
 all took dinner with Geo. Leaphth
 making 3. meals in all. All got
 in full day for Coss Co. Over night
 in tent.

(16) 138-30

299

Carr Co

Jan 27-09 Wednesday

Adair & I ch. 4.10 & take an
 Reg @ Hob 11843.70 Temp 1/16 are continued
 E 11k ft off an original line @ 13163.70
 Hob Temp 1/16 so ride 31-138-30 where
 4 out holes call for:-

asp 5 N 12 E 48 lkr = 31.68 ft } gone
 BP 98 75 W 43 " = 28.38 "

Continue East @ 14363.70 enter
 Tam Swamp @ 14483.70 Hob Temp 1/16
 in swamp. 15.100. leave temp
 15803.70 Hob Temp NE cor 6-137-30

True Corner sets East 50.60 feet
 and South 58.65 feet Total dist-
 ance is 15.854.30 feet @ NE cor
 6-137-30 4 out holes call for:-

BP 8 N 5 E 20 lkr = 13.20 ft
 NP 7 N 83 W 16 " = 10.56 "
 NP 8 S 64 E 30 " = 13.20 "
 NP 7 S 68 W 25 " = 16.50 "

All are true and cut off close to
 the ground except NE 1/3 T. stump
 which stands 4 feet high well marked

Adair & I chained the
 whole 3 miles correct under
 plumbob. Double center stocks in

Hob - We set a big spruce 4 1/2 x 4 1/2
 in stake 3 ft long at NE cor 6-137-30

Then Chick chained 2 miles west
 and out for night. We all about lunch
 at Norman's table. Norman is going
 to see Carr Co for damages for our cutting
 his shade trees. This is the 3rd
 morning the kids have found their
 survival tore up presumably by
 wolves. All got in full day for
 Carr Co over night in camp.

300

Cusco

(17)

138-31

Coss Co

Thursday Jan 28-09

Jake Hoffman & I Chaining
 A. & Geo. Leinfath as men
 Before beginning the survey we checked
 chained the remaining mile of line
 line and found it correct

Beginning at an old stake set near
 the corner of Twp 137-30 & 31 and 138-
 30 & 31. Meron N. 8° 40' E @ 630 enter open
 slew 1320 Hub & leave slew. 1860
 enter NE cor of same swamp 1975
 leave same. 2300 cross old wagon
 road bear E & W. 2500 enter little
 round slew 2600 leave same 2640
 Hub Temp 1/4 E side 36-138-31

40 ft water call mi -

NP 20 N 84 1/2° E. 20 hrs = 13.20 ft
 13P 15 S 70 1/2° W - - - - - back zone.

Continue north @ 3085 cross old
 road NW & East 3200 enter river
 bottom. 3360 cor of 15 foot creek runs
 E. 3450 leave creek meadow @
 3960 Hub quit for night in big
 snow storm. Dined out all govt
 full day for Coss Co, one night at
 home in tent.

Friday Jan 29-09

Hoffman & I Ch. Leinfath & son
 as men Beg @ Hub 3960. N of
 old stake near NE cor of Twp 138-31
 and continue north. @ 3960 enter
 timber (swamp) 4560 leave swamp
 enter Norway pine timber sold land
 4900. enter big open Tam swamp 5280
 Hub. True NE cor 36-138-31 265
 11 ft 20 x 5 ft E art making total
 length of line 5269 feet

Jan 29-09
continued

18 138-31
Conn Co.

391

at NE cor 36-138-31. Gout notes say
Tan 9 N 4 1/2 E 552 lbs = 364.32 ft
" 58 76 W 212 " = 139.92 "
" 2 1/2 N 39 1/2 W 22 " = 14.52 "

We found the NW & SW BTS plainly
marked out down & by measuring
from face of line came exactly 10-
cords of old slate point 6 in in diam
18 inches long & well covered with
moss. BTS stand fine for course
Terribly cold snow drifts deep
quit for night cut wood after
I got home and made out the
line for the crew including Saturday
(Tomorrow) as the Commissioner
meet Tuesday and we are going
to work tomorrow at our own
lunch at Geo Stanfords house all
got in 8 days. I got in 9.

Saturday Jan 30-09. Some crew
Beg @ same old slate cor near SE cor
Twp 138-31 W. run S 8° 0' by back
sighting on our preliminary line
just run Vath. @ 108.3 ft and cross
our EXH Preliminary line, 26.70 ft E of
our 2. mile hub. @ 950 S enter meadow
@ 1090 on 10 ft creek runs E at
1100 leave river meadow & follow
along edge of river bottom. 14 Pins.
@ 1320 Hub. 1500 enter meadow
1860 leave meadow 2170 enter meadow
2640 Hub in slew 2700 cor
of 4. road pop & alder ridge (W side)
runs EXW. 3000. leave slew enter
Oak Pine 3300 leave JP enter very flat
open solid ground.

Jan 30-09.

Coss Co

Continued

@ 3300 leave penlin very flat open ground that stretches south as level as a lake, to the foot of the big hill.
 3960 Ht in flat / 4500 penlin steel
 E x W 4600 leave plain 4860 foot
 of big hill 5700 top of hill 5280 Ht
 True SW on 6-137-30 set
 5740 feet south and 8820 ft E x W
 making total distance 5337.40 ft

at 1st port on W. side of 6-137-30
 Gout holes call for -

asp 7 N 79 W 57 lbs = 37.62 ft

Tam 6 S 20 E 41 " = 27.06

we could not find them.

At the SW on 6-137-30 we tied into a
 Ht previously set by me for the
 line corner from the old Gout.
 Bearing lies Jake Hoffman & I
 channeled blunted line & double in
 Ht. Addison & Geo. Bonfath
 Hoffman went home and will not be and
 till after Commissioner's meeting.
 A Bonfath & I check chained a mile W.
 only a mile more to check chain on
 this whole run. Quiet for the day over
 night at home in the tent all -
 of the full day for Coss Co.

I sent in my bill by Hoffman by
 Walker this Feb 1-09.

Coss Co Min 11 John W. Coss Co

Engineer work in survey of Town Lake
 to Feb Jan 21-22-23-25-26-27-28-
 29-30 1909 worked 9 days @ \$36.00

at hand
 my Pat Co
 pen 589 cal
 labour 0
 will send in
 a notation
 trapping

Tolson deer
 skin
 alarm & bell
 squid ports
 shell plate 2
 table - 2 horns
 sprinkled
 on skin 26
 after damp
 churning and
 set - Island
 30 x days

(20) 136-31

303

Cross Co

Sunday Jan 31-09

I laid up, storm still howling from the south but no snow falling cold. I got a cord of Tann wood from A Hanforth for which I am to pay \$2.00 Cross Co should pay for this

Paid Mrs Gertrude Hudson 25.00 in full for milk for month of Jan
Paid Mrs Addison Deaugh 50.00 in full for milk & bread for month of Jan 1909

Monday Feb 1-09

A deep frost drove to mudied with a load of posts then to Pine River I went with him

I paid Mrs Anderson \$30.00 in full for Cecyl's music lessons

Signed Smarts affidavit & mailed them on P.M. train

Shipped Bernard Mayer Co their dry goods back Took dinner with Cecyl at Johnsons Restaurant

Came out in P.M. with Hoffmans team to Harleys then walked the woods to Hunt Shot an owl in the dark with the 2 ages

I sent following bill to Walker by Huffer

Walker Feb 1-09

Cross Co To John W. Cross

Eng working establishing lines of Co road at NE cor 136-31
Nov 22-26-29-30, 4 days \$16.00

Huffman gat in the same days @ 2.00 as chairman & ax making \$8.00

Over

304

(21)

138-31

Coss Co

Feb 1-09

Continued

I also sent in the following bill by
Huffman & Walker Min Feb 1-09
Coss Co Min to John W Cuss Len
Est con of Backus & Big Swamp Co
road by putting in the NE cor of
Twp 138 R 23 Jan 7-8-9-10-17-20
1909. 6 days @ 4⁰⁰ \$24⁰⁰

"This work had to be done at this
time on account of crossing the
ice in the lakes"

Huffman got in the same days @ \$2
making \$12⁰⁰

Walker Min Feb 1-09

Coss Co to John W Cuss Len

Engineer work in survey of Town Lake
wagon road (35 day (Twp 138-31))

Jan 21-22-23-24-25-26-27-28-29-
30-31 1909, being 11 days @ 4⁰⁰ =
\$44⁰⁰

Huffman got the same days @
\$2⁰⁰ per day \$22⁰⁰.

I O.K'd A Hanforth's time as a man
& Chaminian in survey of Town Lake
road Jan 22-23-25-26-27-28
29-30 1909, 8 days @ \$2⁰⁰ = \$16⁰⁰

G. W. Hanforth got in the same
days making \$16⁰⁰ also

I got some field notes at Pine
River & got in full day for Coss Co
our night at home in tent

(22 138-31)

305

Corso Co

Tuesday Feb 2-09

A. Sanford & I hauled a load of cord wood in a.m. for which I am to pay him \$2.00 we worked in p.m. for Corso Co. Harold & I walked to Geo. A. & corrected up some stakes in the rough. all got in full day for Corso Co. Jake Hoffman is a walker at Commissioner meeting

Wed Feb 3rd 1909

Geo Sanford & I putting in the NE Cor 137-31:-

As the total distance from the true SW Cor 35-138-31 East to the SE Cor of 31-138-30, of 15,803.70 ft Goutch is really 15,854.30 ft my chain or 50.60 ft longer than Goutch chain. I set Hub No 10, 560 E, East 33.81 ft at which point I placed Hub "A". This fixes the position of the corner on to distance E & W.

As the total distance from the NE Cor 36-138-31 South to the SE Cor Sec 1-137-31 of 10,500 ft (2 miles) Goutch chain is really 10,606.40 ft or 46.40 ft long my chain. I measure 11 ft 20 of old stake 0.0, & set Hub No 15280 / 20, then 23.90 ft more south & set Hub "B".
 Hub "A" is 10,593.81 East
 " " "B" " 5,303.20 South
 and is also 5,303.20 South

Thursday Feb 4-09

Jake Huffman got back from Walker and joined Geo L, A Donforth & I at old John St John's hunting shack

Beg @ line SE cor 34 - 138-31 we re-chained my old Transit line west Geo L & I Channing. @ 29. Tot 651.70
 Hub 847.30 Hub V 888 enter lake. 1000
 leave same 1320. pin @ 1321.15 old
 Temp 1/16 Hub 1720 enter wet slew. 1940.
 leave slew. 2023.30 old hub. 2181.85
 old stake in E edge of lake 2640 pin
 Temp 1/4 hub on ice 2975 leave lake
 (W & BT is gone) 3049 Hub 3359. Hub
 3835.30 Hub @ 3960 Hub Temp 1/16
 @ 3960 + 1093.62 = 5053.62 Hub Temp
 SW cor of Twp 138-31 - (12 chs + 13.62 ft)
 (90. foot chain + x E Transit)

Front Water Call for:

Aspen 10 N 25 W 34 chs =

" 10 S 25 W 18 " =

" 10 N 35 E 9 " =

" 10 S 35 E 34 " =

} all are gone

Continue Transit line west along so side of 138-32 @ about 175 Hub on hill top
 @ 275 Cor of 20 foot Bridge site. Two little lakes. Then along so edge of N Lake in pop brush @ 400 enter slew 650
 leave slew 700 top of raise 1150
 cross old road NE x SW 1320 Hub
 1340 enter big slew laying NE

Quit for night. home in tent
 Donforth & A Donforth, Huffman & I
 get in full day for Corr Co

15854.30 $\xrightarrow{5865}$ 15854.31 E
 $\downarrow 50.6$
15803.70

14483.70 $\downarrow 1/16$

13163.70 $\downarrow 1/4$

11843.70 $\downarrow 1/16$

1283.7 $\downarrow 1/16$
 $\leftarrow 111.45$
80 \rightarrow 10560 Sec Cor
317

9240 $\downarrow 1/16$

7920 $\downarrow 1/4$

6600 $\downarrow 1/16$

5280 \downarrow 5280

Geo Vanfuth
4317.55 $\downarrow 31$ 4317.55
 \downarrow 3960 $\downarrow 1/16$

31 \downarrow 3252.5
2758.4
 \rightarrow 2640 E $\downarrow 1/4$

1797.5
 \leftarrow 1320

35-138-3/1
35-138-3/1

N

10606.408

Normal

Tunnel

Total 10.606.403

5740 \rightarrow 5337.40

5280

5095

5337.40

2640

1320

5269

1320

5269

5269

5269

5269

N

308

(27) Cass Co
138-32

Friday Feb 5-09

Geo Danforth & J Ch 90-ft steel tape N & E Town

Jake Hoffman & Allanfolk a men

Reg @ Hub 00. being a point set for Temp
 SW Cor 31-138-31, 5053.62 ft W of
 line SE cor of 31 (See page 25) we continue West
 0.0. at about 175 ft Hub on hill @ 275 cm
 20 foot Bridge sit- but two little lakes. Then
 along so edge of N lake in pop brush
 @ 400 culm slew 650 leave slew 700 top of
 raise 1150 cross old road NE & SW
 1320 Hub 1340 culm big slew laying NE

139-31

Aug 10, 1911 Harry S Todd
 and I set the line corner 10 sec
 7-8-17-18 at a point $2640 + 54.30 =$
 2694.30 feet West of $1/4$ between
 sec 8 & 17 139-31
 and at a point $10560 + 97.50 =$
 10657.50 North of cor 11 sec
 19-20-29-30 - 139-31

Aug 11-11 From cor 56-78 run
 S $70^{\circ}30'$ @ 7960 cut of E & W line
 in 141.50 ft E of Hub NW - set 10
 ft E of road

At 183.40 200 feet off set 3 miles +
 line cor 56-78 set East 29 ft
 410.50

Aug 9-1911 Todd and I LV
 wagon at 9.37 AM. Dinner at
 Hock. - Todd's dinner 25.
 " RR fare 40.

Dinner for me 25.
 RR fare for me 40
 pd for pump pipe 25

PM.

We LV Hock at 1.P.M. with
 Spain's team (1 horse) and
 some iron parts. Supper &
 over night with John Luiten
 Todd gets 1 day for Deerfield
 Team
 RR and hotel Exp

4.00

2.00

.90

I get in one day for Con C. 4.00
 Hotel Exp & RR fare 1.40
 piping 25.
 Cold Chisel 25.

Over night with John Luiten

Aug 10 1911. Todd worked
 all day for Deerfield and I
 work all day for Con Co killing
 iron monuments. figured
 corrections all am.
 PM. we locate the point for
 1/4 bet secs 16 & 17 - 139-31. and
 Hank Luiten and John Luiten dig the
 hole for this corner and also the
 1/4 bet 8 & 9. from old Hub set by
 me for the line 1/4 cor 3 years
 ago. old BTS still at both
 places.

310

(29)

P.M.

Todd & I drive to Co. to see 19-20-29-30
139-31, and locate the point from old Gosh
P.L.S. then go to Co. to see 17-18-19-20
and locate the preliminary corner at
my old W.S. mound and find one old
Gosh P.T. stump and set up for live corner
trees 17-18-19-20

$$2640 + 33.71 = 2673.71.$$

as Hwt 5280 W. of $1/4$ bet 8+17 is
only 2585.70 ft west
of the true corner 10 sec
7-8-17-18 and should be
2673.71 ft west w/ chain
 $54.30 + 33.71 = 88.01$ is a
point 2673.71 west of true
corner 10 sec 7-8-17-18

Then South 70.61. because
the total of 5122.84
is off 135.30 ft

To put in $1/16$ Peg @ 7-8-17-18
then west on preliminary
1336.85 then S. 35.30 ft
and set $1/16$

5058.24 ^{US}

5122.84

2673.71 →

2694.30

2640
0.91

312

139-31

①

Deerfield

Thursday June 12-1913. I am working for Deerfield Twp in establishment of lost NW. Cor of T139-R31 so as to run a wagon road along west line of Sect.

139-31.

Lv walker with my

wife at 9.37 A.M. RR fare to Bocher 68^c. Mrs Fred (Tug') Wilson, Alma & I get some ice cream at Bocher. we buy a lunch to take with us (\$1.30) and Lv Bocher with livery team 11. A.M. Frank Thompson driver. Arrive at John Luitens place @ 1.30 P.M. Dinner with Luitens. I pay Thompson \$3. for team and take receipt.

P.M.

I and

John Luitens ^{walk} to NW Cor of 139-31

but find no Cts.

Overnight with Luitens.

139-31

(2)

Deerfield

313

Friday June 13-1913

Beg at non NE cor of sec 6-139-31
 we check upon old B.T.S and find run
 correct then run West @ $10^{\circ}35'$ on
 @ 429 old road NTS @ 600 stake @
 837 Hub @ $10^{\circ}35'$ @ about 860 cross
 dim road NW + SE @ 1370 Hub temp

1/16. @ 1500 stake @ 1800 Hub $10^{\circ}35'$ on
 @ 2500 stake 2640 Hub temporary 1/4 cor on N.
 side of sec 6-139-31 where MS. Niles call
 for stake and; Dead pine 10 N 48° W 31 LKS
 Dead pine 10 S 39° (or 37°) W 13 LKS, all are
 gone and we continue west @ 3316 old
 road NTS 3500 Hub 3960 Hub temp

1/16 enlis field 4217 road NW + S
 @ 4240.20 Hub 4400 pin @ 5200.14
 Hub temp NW Cor Temp 139-31 and
 set new bearings to my hubs as follows
 burned pine stump 6 S $28^{\circ}56'$ E 39.18
 " " " 6 N $25^{\circ}51'$ E 21.93
 " " " 6 N $64^{\circ}3'$ W 24.81 ft

To rock heads in flat spot. Took in cor.
 of shanty bears S $36^{\circ}38'$ W 43.40 ft lamed
 from random @ $10^{\circ}35'$ on

Geo Thompson - Art Halden + I chain part
 of B.Riv. double our hats H + B Transit 100. ft
 Monarch steel tape John L. Miller - Ralph
 Halden a man. Lunch out over night
 with L. Miller

Saturday June 14th 1913

John & Hank Luiten & men. Art Halden and Geo Thompson assist me in chaining. Ralph Halden &

H & B transit. 100 Monarch steel tape double end hubs plumb-bob chained line. Wm McVey goes with us to the

$\frac{1}{4}$ corner on west side of sec 6-139-31 where US male's call for a post and the following bearing lines: Pines $125^{\circ}5'W$ 355 links (= 234.30 ft) " $125^{\circ}5'E$ 335

Links (= 21.78 feet) 2240 We find an iron monument being a 2. inch galvanized iron pipe 4 feet long set in a bed of concrete

for the true $\frac{1}{4}$ corner on the west side of sec 6-139-31 and of over this iron corner we set the transit and run $S5^{\circ}W$ and at 334.30 feet intersect the face of the "BT" marks on the old S.W. U.S. bearing line - this line has been burned down since I was here last, which was on. On Aug 3rd 1908 this tree stood dead but plainly marked

"T139" R32" S 1. B.T." and the witnesses who saw these marks on that day are John Luiten - Dell Tinsley - Art Halden Frank Bice - Bert Luiten and John W. Curo, and on that day we also found the stump of the SE line. about 20 feet SW of the SW bearing line to the $\frac{1}{4}$ on west side of sec 6 - there is the stump of another 24 inch Norway line which at one time had some iron marks which gave it the appearance of being one of the old U.S. bearing lines but it was marked by a chain by the name of James M. Colley about 1898, when I was with him.

looking up a homestead. for a Mr. Bigby
 says Mr. Vay thinks this was one of the
 old U.S. bearing lines but he is
 mistaken.

We find that the ironth corner
 at the on the west side of sec 6-
 139-31 is correctly placed from
 the old U.S. bearing lines and from
 this corner we run westerly on
 9⁰⁰ on. @ 981.40 feet lock in GP
 stump @ 1650 set Hub. @ 2437.40
 lock in GP stump stump not marked
 @ 2640. set hub for temporary
 trap corner No 2, from which traps
 trap on hub bears N 41° 30' W 15.74
 feet, took in cor of shanty bears
 S 55° 56' W 42.55 feet
 turned pin stump 6, S 23° 32' E 23.91 feet
 " " " 6 N 56° 25' W 39.68 "

To lock heads, turned from our
 random line just run.

at 11:30 A.M. we leave for
 John & Wilcox place where we get
 dinner and I put in the following list:

Deerfield Minn June 14th 1913

Traps Deerfield To John W. Cues, Sen
 fulltime survey work in establish-
 ment of Walker - Pillsbury road
 thro sec 6-139-31 worked June 12-13-
 14-1913 being 3 days @ \$4⁰⁰ per day \$12⁰⁰

Lunch

3⁰⁰

R.R fare 60 + 40

10⁰⁰

\$16⁰⁰

I pay Mrs. Lurien \$2⁰⁰ for

Twp Cor. on 4th. Guide
Mer. to Twps. 139-140-R.31.

Aug. 1st, 2nd, 3rd, 1921

E.B. Horst, B.B. Bartlett^{chain}, and

E.A. McPherson^{chain} begin at

an Iron which was question-
ably established. We run N.

on Curros old line (P. 315) (B. 85)

at 2640 set Hub. (Pick up
R. 8542' continue)

Curros. points (referenced))

N. at sta 7950.2 Sec. cor. sec. 30-31

Set a 2" x 4' I.M. Boiler flue
New B.T.s. to cor. of secs. 30

& 31 Twp. 140 Rge. 31 on

County line & 4th. Guide Mer.

(Bearing with a pocket compass)

Dist. with a 100ft. Chicago steel tape

J.P. 12 S. 15° W. 126.4 ft.

J.P. 5 S. 45° E 157.8 ft.

Fence post North 21.8 ft to cent.

I take crew to the I.M. at

the 1/4 S. W. side sec. 6-139-31

also to the SW cor. sec. 6 and

decide both corners are

of a questionable nature
and will bear investigating.

I set a 2" x 48" I.M. at Sta. 26463
N. on a straight line bet. the
1/4 S. cor. W. side sec. 4-139-31 and
the N.W. cor. sec. 31-140-31
and leave the job until I can
find more evidence.

E.B. Horst.

Chet Garrity. 2 meals & lodging
for Horst & McPherson. at \$2.50 per day.

Bill for Garrity \$5.00

Aug. 15, 1921.

I have investigated the above
and can find no evidence con-
trary to the above corners
so I will accept same as
correct. E.B. Horst.

29.91 SW
11.72 SE
23.31 NE

18.79
66
112.74
112.74
1240.14
3958
5200.14

295.02
244.0
539.02

