

83.

MINING
TRANSIT BOOK

363

Please mail this
book to John W. Curs -
Walker, Minn

Index Bk. 83.

Sec. 29-142-31

page
2-31

29-142-31.

Tuesday August 17th 1915.
Hot.

Groomiller.

Nick Harig.

Howard Swanberg.

Gurley inst. 300' Chicago Tape.

We start at the iron SE cor.
Sec. 29-142-31 and chain West
along the road.

@ 2750. We stop and
look for the iron $\frac{1}{4}$ cor. on
South side Sec. 29.

We spend the rest of the
day looking, and find nothing.

Groomiller-

Time Sheet for survey of Sec. 29-142-31.

August 1915. September 1915.

17 18 19 20 21 22 23 24 25 26 27 28 29 30 31

1 2 3 4 5 6 7

1v Geo. W. Miller

1 1 1 1 0 1 1 1 1 0 1 1 1

2v Nick Harig

1 1 1/2 1 1 0 1 1 1 1 0 1 1 1

3v Howard Swanberg

1 1/2 1 1 0 1 0 0 0 0 0 0 0 0

4 John W. Curo.

5v P. M. Scott.

0 0 0 0 0 0 0 1 1 1 0 1 1 1

6v H. F. Baldwin.

0 0 0 0 0 0 0 1 1 1 0 1 1 1

7v Elmer Horst.

0 0 0 0 0 0 0 1 1 1 0 1 1 1

8v Harold J. Curo.

0 0 0 0 0 0 0 1 1 1 0 1 1 1

9 Ernest Tuster.

0 0 0 0 0 0 0 1 1 1 0 1 1 1

29-142-31.

Wednesday August 18th 1915.

Hot.

Nick Havig and I look all day for the $\frac{1}{4}$ cor. on S. side Sec. 29. Howard Swanberg assists us in the a.m.

Gronmiller.

29-142-31.

Thursday August 19th 1915.

Hst.

I go to Walker in the a.m.
to get Curo's notes of the 14 cor.
on S. side Sec. 29. Harig and
Swanberg lay up in the a.m.

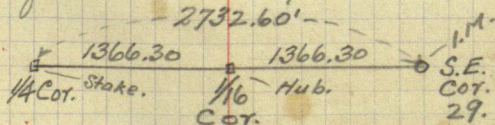
P.M. Gurley Inst. 300' tape

Curo's notes call for one B.T.
at the 14 cor. on S. side Sec. 29,
viz. Pop. 12 - $S 15^{\circ} 43' W - 21.45'$ ($V = 8^{\circ} 46'$)
U.S. notes call for -

Both U.S. trees are gone, but
we find stump of the 12" pop.
with tack still in blaze, and
from it we set the corner -

I set one more B.T. as follows -

Elm 16 - $N 46^{\circ} 30' W - 66.00'$ to head of
tack in blaze ($V = 8^{\circ} 46'$)

E $\frac{1}{2}$ of S. boundary Sec. 29 -Runs on $S 73^{\circ} 30' W - V = 8^{\circ} 46'$

Lprocmilled.

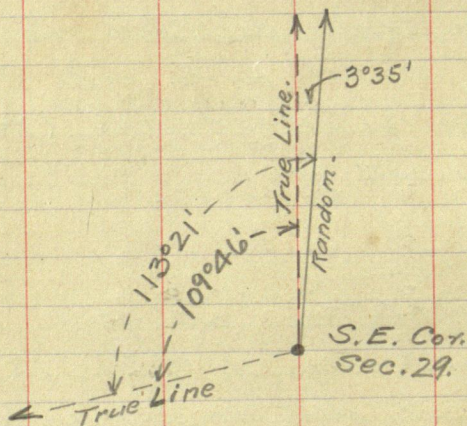
8

(7)

29-142-31-

Setting transit on $\frac{1}{4}$ cor. on S. side Sec. 29, I backsight E. on true line, plunge telescope and run West. Run about $\frac{1}{8}$ mile.

We measure the angle at S.E. cor. Sec. 29 as follows.



Quit for night.

Growmiller

(8)

9

29-142-31-

Friday August 20th 1915.

Hot.

Greenmiller. Transit axe & chain.

Nick Harig. Axe.

Howard Swanberg. Flag & chain.

We cont. W. on random S.
boundary Sec. 29. Start
chaining @ $\frac{1}{4}$ cor.

@ 745.60 - Hub.

@ 1106.60 - "

@ 1380.80 - "

@ 1603.50 - "

@ 1978 - Walker to Akely road
about NE & SW.

@ 2375.20 - Hub.

@ 2639.00 - "

Quit for night.

One of the level screws in the
Gurley inst. is binding so hard that
I remove it & find it is bent. I take
in Gurley transit at noon and bring
out the alce. At night I take the
bent level screw in to the office at
Walker.

Greenmiller.

(9)

29-142-31-

Saturday August 21st 1915.

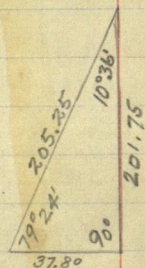
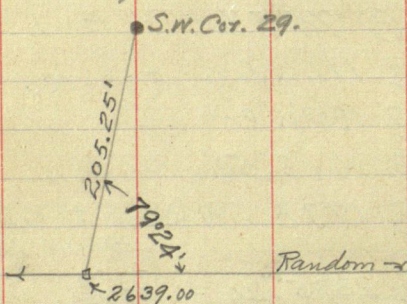
Hot.

Groenmiller Transit, Axe & chain.
 Nick Harig. Axe.

Howard Swenberg. Flag & chain.
 Also inst - 300' Chicago Taps

We find the iron S.W. cor.

Sec. 29 and tie our random
 to it as follows:



Showing method
 of working.

From which I figure -

@ 2601.20 the S.W. cor.

Sec. 29 sets North (90° from random)

201.75'

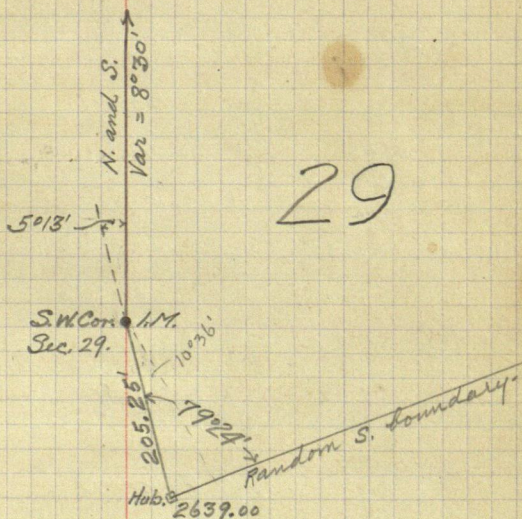
Correcting back [$.077560$]

Hub @ 1300.60 goes 100.88' North
 (90° from random) to true W $\frac{1}{2}$ cor. on -
 S. side Sec. 29. (Oak hub in N. wheel
 track of road. Wit. Post sets 4' North.)

Groenmiller

29-142-31.

I now set the transit over the iron S.W. Cor. Sec. 29, backsight on hub #2639.00 on random S. boundary Sec. 29, transit telescope, deflect $5^{\circ}13'$ to the right and run a new random North. It bears N & S, on $8^{\circ}30'$ Var.



We cut about $\frac{1}{8}$ mile and quit for night.

From above data & data given on page (14) 15, I figure SW angle Sec. 29 to be $75^{\circ}31'$

Brown Miller

Brown

29-142-31.

Sunday August 22nd 1915.

No work. At camp all day.

Grovermilled.

29-142-31.

Monday August 23rd 1915.

Cool & cloudy.

H&B Inst.
300' Chicago tape.

Gronmiller - Transit, axe & chain.

Nick Harig - Axe.

Howard Swanberg - Flag & chain.

We cont. N. on random N. boundary
Sec. 29. We start chaining at
the S.W. Cor. Sec. 29.

@ 156.80 - Hub.

@ 759.60 - "

@ 886.60 - "

@ 1099.50 - "

@ 1461.60 - "

@ 2081.90 - "

At about 3:30 P.M. Harold Curo
comes out and informs Howard
Swanberg that he is wanted at
camp. Harig and I cont. our
random N. without chaining.
Run about $\frac{1}{8}$ mile & knock off.

Gronmiller

29-142-31.

Tuesday August 24th 1915
Cool & cloudy.

P. M. Scott - transit - H & B.

McGrawmillers. chain & axe.

H. F. Baldwin. Transit & chain. alor.

Elmer Horst. Axe.

Harold J. Curo. Axe & flag.

Nick Harig. Axe.

Ernest Tusler. Axe.

We cont. N. on random W.
boundary Sec. 29.

@ 2163.20 - Hub.

@ 2463.60 - "

@ 2897.00 - "

@ 3115.40 - "

@ 3473.80 - "

@ 3647.00 - "

@ 4120.90 - "

@ 4464.70 - "

@ 4660 - Old log house 6' W.

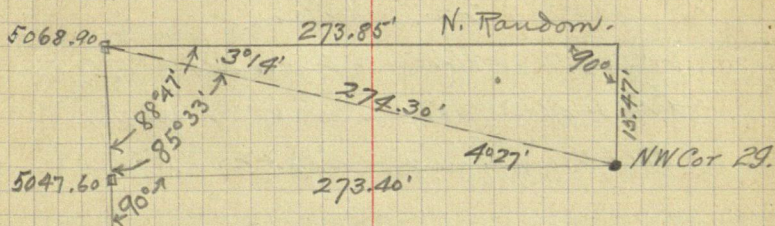
@ 4951.20 - Hub.

@ 5068.90 - Hub. P.I. with

E & W random S. boundary Sec. 20 (N.
boundary Sec. 29) run during
survey of Sec. 20-142-31 in the
McGrawmillers

29-142-31.

month of March, 1915.



@ 5047.60 the True NW Cor
 Sec. 29-142-31 sets East (90°
 from random) 273.40'
 Corr = [.05416]

Scott, Miller and Harig go to
 the true W 1/4 Cor. on N. side
 Sec. 29 and run a random
 South.

Baldwin, H. S. Curo, Insler &
 Elmer Horst go to the
 true 1/4 cor. on N. side
 Sec. 29, and run a
 random South.

Both parties run a few hundred
 feet and knock off.

Grover Miller

29-142-31.

Wednesday August 25th 1915.

Fair & cool.

P. M. Scott - Transit - H & B.

G. W. Miller - Axe & flag.

Nick Harig - Axe.

We cont. S. on random
through about center W $\frac{1}{2}$
Sec. 29. Run about $\frac{1}{2}$ mi.
without chaining.

H. F. Baldwin - Transit - Aloe.

Elmer Horst - Axe - Ernest Luder.

H. J. Curo - Flag & axe.

They cont. South with random
through about center Sec. 29.

They run to South boundary
and miss true $\frac{1}{4}$ cor. on South
boundary 104.10 ft. on the West -
(90° from random).

H. F. Baldwin goes in @ 2 P.M.
to the office at Walker works
on plat & calculations of Sec.
29.

G. W. Miller.

29-142-31.

Thursday August 26th 1915.
Fair

P.M. Scott. Transit H. & B.

Strommiller. Axe. & flag.

Nick Harig. Axe.

We cont. S. on our random
through about center
West $\frac{1}{4}$ Sec. 29-142-31. We
run about $\frac{3}{8}$ mile through
very heavy cutting.

H. F. Baldwin. Transit - Aloc.

H. J. Curo. Flag and axe.

Elinor Horst. Axe.

Ernest Insler. "

Starts at The true E $\frac{1}{16}$ Cor. on
S. Boundary Sec. 29, runs North on
random through about center
E $\frac{1}{2}$ Sec. 29, misses true E $\frac{1}{16}$
Cor. on N. Side Sec. 29 - 36.20' on
the East. (90° from random.)

Horst and Baldwin look for the
 $\frac{1}{4}$ on N. Side Sec. 29, where U.S.
notes call for a post and
Strommiller.

18

(17)

29-142-31.

The following bearing trees:

Pop 5 - N 27 W - 18

R. Oak 4 - N 40 E - 11

They find nothing, and
get back to camp at 7 P.M.

Growmiller.

29-142-31.

Friday August 27th 1915.
Fair & warm.P.m. Scott. Transit H & T3.
Brownmilled Flag & eye.
Nick Harig. Eye.

We cont. S. on random
through about center $W\frac{1}{2}$
Sec. 29. Miss true $W\frac{1}{16}$ on
S. boundary Sec. 29 - $122.50'$
on the West (90° from random).

We now set the Transit over
the true $\frac{1}{4}$ cor. on E. side
Sec. 29, backsight on true
line South, turn $78^\circ 54'$ to the
right & run West on random
through about center Sec. 29.

We run $\frac{1}{2}$ mi., setting hub & tack
at intersection with $E\frac{1}{16}$
and $N+S\frac{1}{4}$ lines.

Brownmilled

29-142-31.

H.F. Baldwin. Transit-Alce.
 H.S. Curo. Flag & axe.
 Elmer Horst. Axe.
 Ernest Juler. "

They set the Transit over
 the true $N\frac{1}{6}$ cor. on the E.
 side of Sec. 29, backsight S.
 on true line, turn $82^{\circ}42'$
 to the right & run West on
 random through about center
 $N\frac{1}{6}$ Sec. 29.

They run $\frac{3}{4}$ mi., setting hub
 & tack at intersection with
 $E\frac{1}{6}$, $N\&S\frac{1}{4}$, and $W\frac{1}{6}$ lines.

Orowmiller

(20)

21

29-142-31.

Saturday August 28th, 1915.

Rain all day - Everybody
stays in camp. Cus comes
out in Grindali car at
noon.

Gronnick

22

(21)

29-192-31.

Sunday August 29th 1915.

P.M. Scott Transit H & B
 Geo. W. Miller. Axe & Flag.
 Nick Harig. Axe.

We cont. W. with random $\frac{1}{4}$
 through about center Sec. 29.
 We set hub and tack for the
 intersection with the W $\frac{1}{16}$ line.
 Miss true $\frac{1}{4}$ cor. on W. side
 Sec. 29 - 76.6' to the South (90°
 from random.)

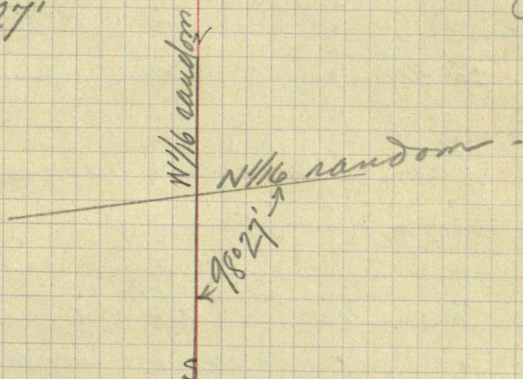
H. F. Baldwin - Transit - Aloc.
 H. J. Curo. Axe & flag.
 Elmer Horst. Axe -
 Ernest Insler. "

They cont. W. on random
 through about center N $\frac{1}{2}$
 Sec. 29. They miss the true
 N $\frac{1}{16}$ cor. on W. boundary Sec. 29 -
 71.3' to the south.

Geo. W. Miller -

29-142-31-

Baldwin measures the angle
 of intersection of the N $\frac{1}{16}$ line
 with the W $\frac{1}{16}$ line. SE angle
 = $98^{\circ}27'$



John W. Caro comes out on
 the work at noon, asks a
 question or three, gives a
 few instructions, and
 returns.

Geowmiller -

Monday - Aug 30th 1915.

Line day.

Breakfast 6.10 A.M.

Miller in Walker all day
working on Plat 29-142-31.

Baldwin - Aloe Transit

Scott - H & B Transit

Horst - H Caro - Harig - axeman.

Tusler brings us lunch on
Line.

We all go to P.I. of the $\frac{1}{4}$ Random
Lines at Centre sec 29-142-31.

With MB Transit at P.I. Scott
turns $90^{\circ} 0'$ from North & South.

Random line here we measure
52.00 ft East and put in hub.
This is a point on the true $\frac{1}{4}$
Line North and South.

Then from P.I. Scott turns
 $90^{\circ} 0'$ to East and west
Random and chaining North
38.3 ft we have a Sap
which is a point on true
 $\frac{1}{4}$ Line East and West.

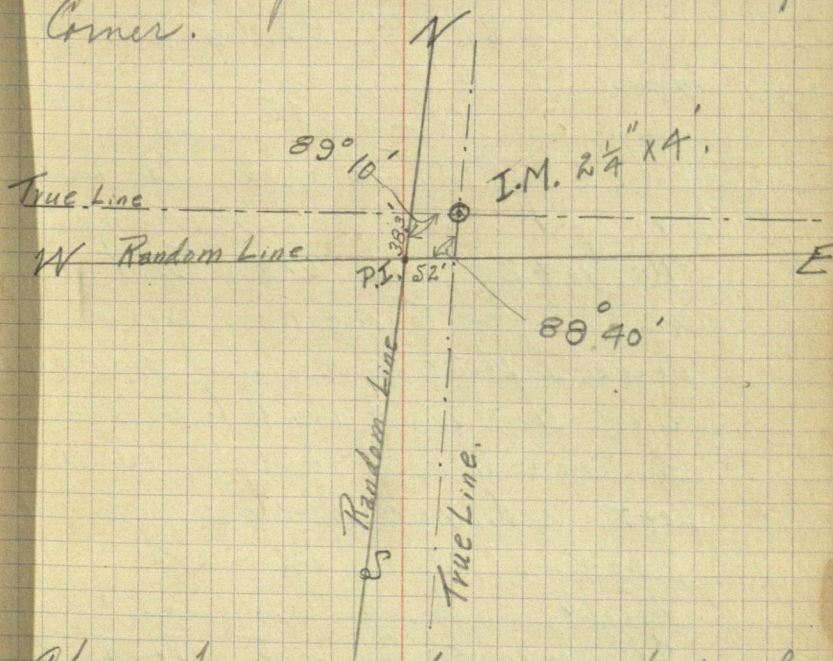
With H & B Transit here and
backsight at P.I. Scott turns

H. J. Baldwin.

Monday - Aug- 30 Continued -

25

S.E. angle $89^{\circ} 10'$ which is true line
Baldwin set up at Kut on true
North & South line just placed with
Alce Transit backsights on P.I.
and turns N.W. angle $88^{\circ} 40'$
At the intersection of these two
lines we put in Kut at true $\frac{1}{4}$
Corner.



Above Figure shows method of
setting True Corners from Point
Intersection of Random Lines.
We now Chain from a pt
on the random line at right
angles to I.M. South to $\frac{1}{4}$ Cor. let
H. F. Baldwin

26. Monday Aug. 30. Continued

Sec 29 and sec 32.

Chaining South -

At 37.4 S to P.I. Random Line

" 967.6 S a hub

" 1400 S Enter Irish

" 2022.3 S a hub.

" 2325.45 P.I. of Random
Lines

$2325.45 - 40.45 = 2285.0$

at 2285.0 True Cor sets East
104' ft.

At 1142.5 we chain East 78.05
at Pt angles to Random line and
drive I.M. 2 1/4" x 4' at true to Cor.
We back sight on hub at 1142.5
on Random and deflect. 16° 30'
Left. and run Random line East.

Baldwin also Transit

Horst and St. Curo Age & Hg.

The True to Cor sets North

13.20 ft.

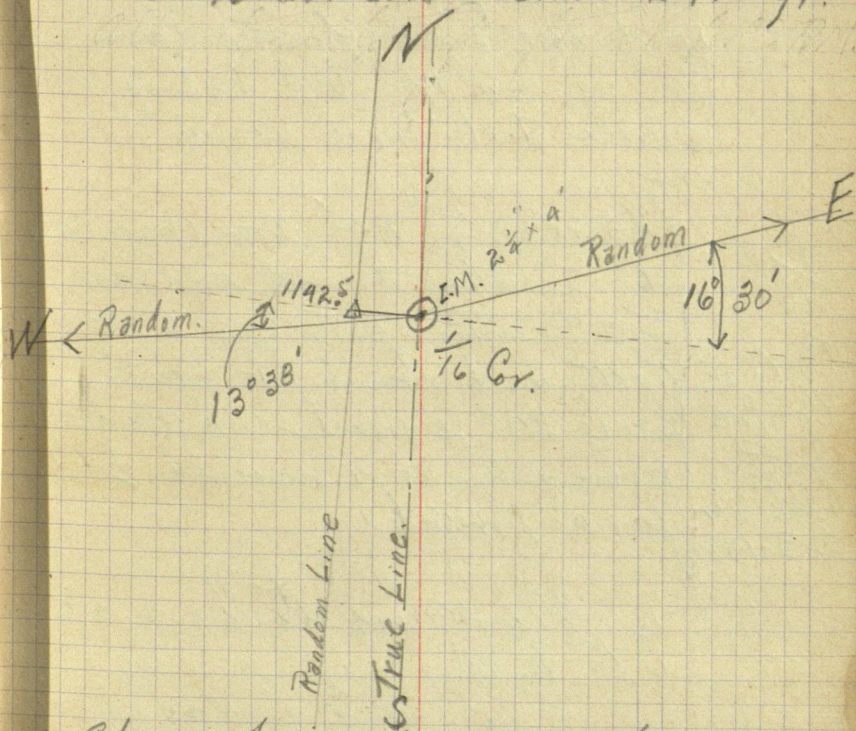
Also With also Transit over
to Cor. just set 78.05 East of
hub at 1142.5 and backsight
at hub 1142.5 on Random

A. J. Baldwin

七

Harig Ave and Flag continue
this line West.

True $\frac{1}{16}$ Cr. sets South 24.00 ft.



Above Fig shows method of
starting Random Line East
and Random Line West from
1/16 Cor south half sec 29-142
H. J. Bachman.

Monday - Aug 30th 1915.

Iron Monuments -

$\frac{1}{4}$ Cor. Centre Sec 29 { Drive a $2\frac{1}{4}$ " x 4" Iron Monument
36" in the Ground, and dig
2 Witness pits one 6 ft. North
and one 6 ft. South, each
30" sq. and 12" deep, piling dirt
around I.M. for a Mound.

$\frac{1}{16}$ Cor. at Centre South half sec 29-142 { Drive a $2\frac{1}{4}$ " x 4" Iron Monument
36" in the Ground and dig
two Witness pits one 6 ft
North and one 6 ft South
Each 30" square and 12" deep
piling the dirt around I.M.
for a Mound.

We arrive at Camp at
6.10 P.M.

N. J. Baldwin

Tuesday Aug 31st 1915.

Tuesday Aug - 31st 1915.

Fine Day - Warm.

Breakfast 6.10 A.M.

Baldwin - Also Transit

Scott - N & B Transit

Host - Harig - N. Caro - Bremen

Justy brings lunch out in field

Miller in Walker working on plat 29-142

— IRON MONUMENTS —

South Boundary { A $2\frac{1}{4}$ " x 4' I.M. is driven
at $\frac{1}{4}$ Cor and both $\frac{1}{16}$ Corners
on the South Boundary.

These are along the State
Road and are driven flush
with the ground but
not rounded.

West Boundary and $\frac{1}{16}$ Cor. at Centre of North Half. { A $2\frac{1}{4}$ " x 4' I.M. is driven 36"
in the ground and a witness
pit 6 ft South and 6 ft North
each 30" sq. and 12" deep.
at the foll. Corners.
 $\frac{1}{4}$ Cor and both $\frac{1}{4}$ Corners on
the West Boundary and
the $\frac{1}{16}$ Cor at Centre of North
half sec 29. N. J. Baldwin.

31.

Tuesday Aug 31st 1915 Continued

{ At each of the three interior
Corners on West $\frac{1}{4}$ Line
At $\frac{1}{4}$ Cr at Centre of N.E. $\frac{1}{4}$ Sec 29
and $\frac{1}{4}$ Cr at centre of south boundary
of N.E. $\frac{1}{4}$ Sec 29.

The I.M. are set as follows.
We drive $2\frac{1}{4}" \times 4'$ I.M. 36" in
the ground and 6' West and 6'
East. dig witness pits 30" sq.
and 12" deep. piling dirt around
I.M. for mound.

See figure page 29.

The I.M.s at North Boundary
of sec 29 were set by Miller when
Sec 20 was subdivided in March
1915. also there was an I.M.
at S.E. and S.W. Corners of
sec 29.

The setting of the I.M.s on
the East Boundary of sec 29
is described in notes of
resurvey of sec 28-142-31.

A. J. Baldwin.

Random E -
True line S -

2732.60

SE Cor - Angle = 113° 21'

1366.30

S-B@2-142-31.

1375.0

(1/4 W. side sec. 29)

1366.3

Pop 5 - N 27 W - 18 = 11.88'

8.7

R. Oak 4 - N 40 E - 11 = 7.92'

15.47

88° 47'

