

81<sup>1/2</sup>

---

MINING  
TRANSIT BOOK  
363

---



# INDEX

Sec 5-142-31		Pg 2. To. 39
Time sheet		Page 3
N. Boundary		7
E " R.L		13+14
S.E. Corner		15
R.L. West side + tie to Sec 7 (Scott)		16
" " "		17
1/4 Cor East side Sec. 5		17+18
Corrections figured		19
Sketch		20+21
Latitudes and departures		22
N. 1/16 line		24
E + W. 1/4 "		25
To page 39		

Not filed.



(2)

Sec 5 - T142 - R931

Contract N<sup>o</sup> 10, May 4<sup>th</sup> 1915

Sunney to start May 25 - 1915

Petition filed by Geo E. Cook

Chas Clarine etc

May 25<sup>th</sup> 1915 As this is the day  
John W. Cook captures some field notes  
and in P.M. goes to pt near the 1/4 cr  
on East side where US notes call for a port  
and the following bearing lines

I can find nothing and go to SE Corner  
but find the water so deep I cannot  
get to the corner

At this point US notes call for  
port and the following bearing lines

Over night at home in Walker



# Time Sheet 1915

December.

S S M T F M T  
12 13 14 15 16 17 18 19 20 21 22 23 24 25 26 27 28 29

MAY SEPT.

25 26 17 18 19 20 21

John M. Puro

H. F. Baldwin

Nick Harig

P. M. Scott

Ernest Taster

+ Charley Clarine

Alvin

S. T. O'Connell

F. N. Molyneux

1

1

1

1

1

1

1

1

1

1

1

1

1

1

1

1

1

1

1

1

1

1

1

1

1

1

1

1

1

1

1

1

1

1

1

1

1

1

1

1

1

1

1

1

1

1

1

1

1

1

1

1

1

1

1

1

1

1

1

1

1

1

1

1

1

1

1

1

1

1

1

1

1

1

1

1

1

1

1

1

1

1

1

1

1

1

1

1

1

1

1

1

1

1

1

1

1

1

1

pk

10 1/2

10

14 1/2



(6)

Sept 17, 1915

Curo and Baldwin spend the day at Sec. 5-142-31. On arriving at the section we secure Charles Clarine to assist us for the day.

We search for B.T.s to  $\frac{1}{4}$  corner between Secs 4 & 5, Dinner at Osceola.

P.M. we search for the B.T.s to the Sec. cor 5, 6, 31 & 32 which we find. Curo with compass finds stumps of old B.T.s to check from post standing. He starts compass line south on 9'10" Var.

Arrive at Walker 6-45 P.M.

Supper at Carlsons.

Balance of notes kept by Curo.



Sat. Sept 18, 1910 5-142-31

(7)

Baldwin, Scott, Harig and  
Tusler, leave camp on Sec.  
28, and come up with the  
G. N. men on gasoline car  
at 7 A.M. - Baldwin and  
Harig go to N.E. corner of  
Sec. 5 and, transit check  
and chain random line  
on north boundary of Sec. 5.  
as follows.

437.1' a hub. (Bryants)  
1213.9 " " (Bryants)  
1295 on old  $\frac{1}{16}$  corner stake  
set N. 44 feet.  
1740.2 a hub  
2021.9 " " a tack on W.P. stump.  
2206.1 " " " " " Oak "  
2582.3 " " a gate post at  
corner of fence sets N. 70'  
2722.9 a hub  
3040.5 " "  
3590. edge of R. R. cut  
3625  $\angle$  of G. N. Ry = 3562 + 74.0 R. R. Ch.  
3645.8 Intersection R. R. tangent  
from south produced  
and read S. E. Ang  
53° 39'



(8)

Sept. 18, 1915

5-42-31

B.C. of curve 3560 + 41.1 R.R.  
Ch

3661.6 a hub top of bank.

Quit at night Mackinac  
Oconals at 6 P.M.

Evening Baldwin and  
Scott go to Walken to  
see Curo but he is not to be  
found and they return  
to Oconals on relief  
speeder.

Baldwin, Harg, Scott  
and Tusler all have  
dinner and supper  
at Oconals.



Sunday Sept. 19, 1915

(9)

Baldwin and Scott  
go to random line on north  
boundary line of 5 and  
continue checking line west  
and at.

4486.7 a hub.

5175.3 the true Sec. corner  
sets north ( $90^{\circ}$  R.) 178.6 feet  
We worked here till 1 P.M.  
then go to dinner.

P.M. we went to Walker  
to see Curo. Fair 50¢  
Alexanders boat  
Supper with curo - spend  
night at camp Sec. 23.



(10)

5-142-31

Monday, Sept. 20, 1915

Rained 6 to 9 A.M., with high wind. Baldwin + Scott leave camp and go to Walker and lake. Reynolds launch to Oconals. Breakfast at Oconals. Scott returns with H+B transit and picket and a 100' and 300' chains. Baldwin figures corrections for north boundary of Sec. 5.

Dinner

P.M. Baldwin, with Alce transit, Alvin Clarke axe + flag, Charles E. J. O'Connell eye chain hub at the true corner 5, 6, 31 + 32 and start cutting the line line east.

At 4486.7 hub goes north 154.84 feet.



Tuesday Sept. 21, 1915

5-142-31

(11)

Sun day - Set true N.  $\frac{1}{16}$  Cor. at Sta 3881.48 on R.L. the true  $\frac{1}{16}$  corner sets north 133.95 feet. and we cut the true line from the N.W. corner of Sec. 5 through to this corner.

At Sta 2587.65 of R.L. the true  $\frac{1}{4}$  corner sets north 89.30 feet.

Cut true line to east  $\frac{1}{16}$  corner

At 1293.83 of R.L. the true east  $\frac{1}{16}$  corner sets north 44.65 feet.

The hub at 437.1 R.L. corrects north 15.08 feet. from here we cut to the N.E. corner of Sec. 5. Reach O'Connell's at 6 P.M.

Evening O'Connell & Wife take Baldwin and tools to Walker, Fair \$1.00 paid by Baldwin.



Saturday  
Dec. 12, 1915

Molynaux and Baldwin  
hunt up all the notes on Sec. 5  
that they can find in the office.  
Unable to find any of Bryant's notes

Monday, Dec. 13, 1915.

Molynaux and Baldwin being  
unable to get rig to take them up  
to S. J. O'Connell's place to work  
on Sec. 5, borrow hand sled on  
which they load 5 I. M. surveying  
outfit and suit case, and leaving  
Walker at 9-30 A.M. drag sled  
across Leech Lake on ice to  
O'Connell's reaching there at 11 A.M.

Noon — Cold and Windy  
P.M.

Baldwin at transit

Molynaux, head chain

S. J. O'Connell, rear "

Alvine Clarine, axe + flag.

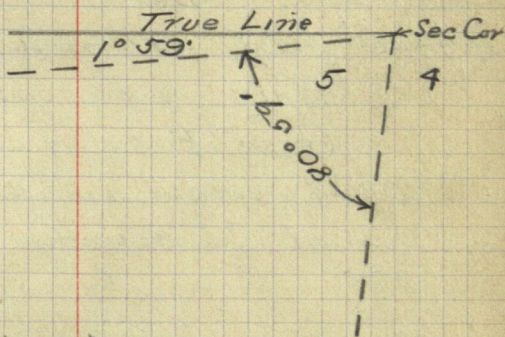
We go to northeast cor. of  
Sec. 5. We check up east end of  
random line on north side to



Determine exact line at N.E. Cor.

With transit at N.E. corner of Sec 5, and sighting to flag on hub at 437.1 of random line, turning transit to R. to flag on hub on true north boundary, found the Angle to be  $1^{\circ}59'$

Transit as before and sighting on flag on hub at station 437.1 of random line for north boundary, turning transit to left to flag on hub of random line run for east boundary, find angle to be  $80^{\circ}59'$



We now check alignment and rechain random line run for east boundary as follows:

700 leave swamp

9+50 enter "

12+80 leave "

13+26.7 a hub ( Bryan )



14

5-42-31

21+97.6 hub (nail)  
 25+06.4 Old  $\frac{1}{4}$  Sec. Cor stake sets West

(25+55.8  $\frac{1}{4}$  Sec. Cor. Set from Old P.T. sets east (90° L)  
 198 ft. (B.T. found) Wed. Dec. 15, 1915

26+40 set a hub (nail)

36+07.8 " " " "

39+60 " " " "

41+32 Q. G. N. Ry - (Ang. N.W. 45° 18')

42+70 B.T. stump - sets E, (90° L)  
 112.2 feet.

44+45 Edge of marsh.  
 Cold and wind day.  
 Quiet for day - Dark.  
 Dinner and supper. + L.  
 at O. Conralls.

*J. Molyneux*

Dec. 14 - Continue E. boundary R.L.  
 south as follows.

50+54.6 Old stake for corner of Secs  
 7, 8, 9 set east (90° L) 216.2 ft.

Correction of .04277 per foot

" at 42+70  $\frac{182.62}{112.2}$   
 90.42



Tuesday, Dec. 14, 1915.

5-142-31

We now go to station 3999 of R.R. chaining on G. N. R. R., which station is marked on the rail, and set up transit here and looking up the track for a front sight and turn an angle of  $52^{\circ} 58'$  to the left, then telescoping we run east 507 feet, which point falls in Beech Lake. We are unable to find any signs of the two oak U.S. B.T.s. From the track we now run west 633 feet which checks on the stake marking the corner of Secs. 3, 4, 8 & 9. From the Sec. Cor I run a line south 573 and look for U.S. M.C., B.T.s. This point falls in a likely place for the M.C.

From the Sec. corner we now west 1617.7 feet and look for B.T. to Gov. M.C. #25, which calls for two oak trees. The point falls on the lake shore among oak stumps, but no signs of marks.

Molyneux, Baldwin, Oconnell,  
and Almie Clarence, working.  
Noon - quit for dinner.



Tuesday P.M., Dec. 14, 1915 - 5-142-31

We go and pick up Scotts random line on west side of the section at Sta 2181.2 and hub and chain the same south across Kabekeona Bay, to connect with Horsts survey of Sec. 7, as follows. and at

22+08 enter swamp

30+56 leave " " enter lake

75+86.2 Offset 672 feet,  $90^\circ$  left to new point for

622.0 Sta 75+86.2, then  $90^\circ$  R to offset line

82+08.2  $\Phi$  of M. + I, R.R.

82+62.2 I. M., M.C., on east + west  $\frac{1}{4}$  line which I. M. sets 223 feet east of the I. M. at the center of the E.  $\frac{1}{2}$  of Sec. 7, 142-31

We now quit for the day.  
Day cold and stinging

J. N. Molyneux



Wednesday, Dec. 15, 1915

5-142-31

Molyneux, Baldwin and Alvin Clarence go to N.W. corner of Sec. line and brush and hub a new random line south for the west side of Sec. 5 to the marsh. We find no new evidence of West Boundary.

After brushing this line south to the marsh, we go to the west  $\frac{1}{4}$  corner on the north boundary and brush and chain the true line east to the  $\frac{1}{4}$  of the P.G.N.R.R. track distance 192 feet.

Snowing most of H.M. and now looks like an all days snow storm. Tell Clarence not to come back in P.M. Quit for dinner.

Baked white fish -

P.M. Snowing

Baldwin & Molyneux go out and again look for B.T.S to the  $\frac{1}{4}$  corner on E. Side of Sec. 5.

We find the <sup>stamp of the</sup> ~~one~~ described by the U.S. notes as follows: Y.P. 24 S 38' W. 15, ~~with~~ with T plainly scribed and a portion of the B showing. Balance of the "B" having been burned off



From this stump we set a stake for the  $\frac{3}{4}$  Cor, then this stake a fallen Y.P., 20 in diameter lays on the ground, which so far as we can determine checks for distance but is S.  $80^{\circ}$  W. instead of S.  $40^{\circ}$  W. as it should be.

We tie this point to the random line for east side of Sec. 4 as follows.

Sta 25+55.8 the  $\frac{1}{4}$  corner sets E  
( $90^{\circ}$  L.) 198 feet.

We now go and hunt for the B.T. which should stand 1203 links north of the S.E. corner of Sec. 4 but are unable to find any signs of it.

Still snowing.

Baldwin leaves about 4 P.M. for Walker.



# Correction - E. Boundary

19

$$U.S. \quad 40.27 \text{ Ch} = 2657.82$$

Our.

$$2652.8 / 2555.8 \quad (03846^- \text{ Correction per ft})$$

$$1337.8 - 51.5 = 1286.3 \text{ on R.L. to N. } 1/16 \text{ Cor.}$$

$$1320. - 50.8 = 1269.2 \text{ " " " } 1/16 \text{ to } 1/4 \text{ Cor}$$

$$10773 / 192 = 2561.46 \text{ Length of True line Sec Cr to } 1/4 \text{ Cor.}$$

$$S. 2^\circ 36' W \quad \begin{cases} \cos. 2^\circ 36' = .99897 \\ \sin. \quad \quad = .04536 \end{cases}$$

$$2533.8 / 198.000 \quad (07786)$$

$$178906$$

$$190940$$

$$178906$$

$$220340$$

$$204464$$

$$15876$$

$$1286.3$$

$$07786$$

$$77178$$

$$102904$$

$$90041$$

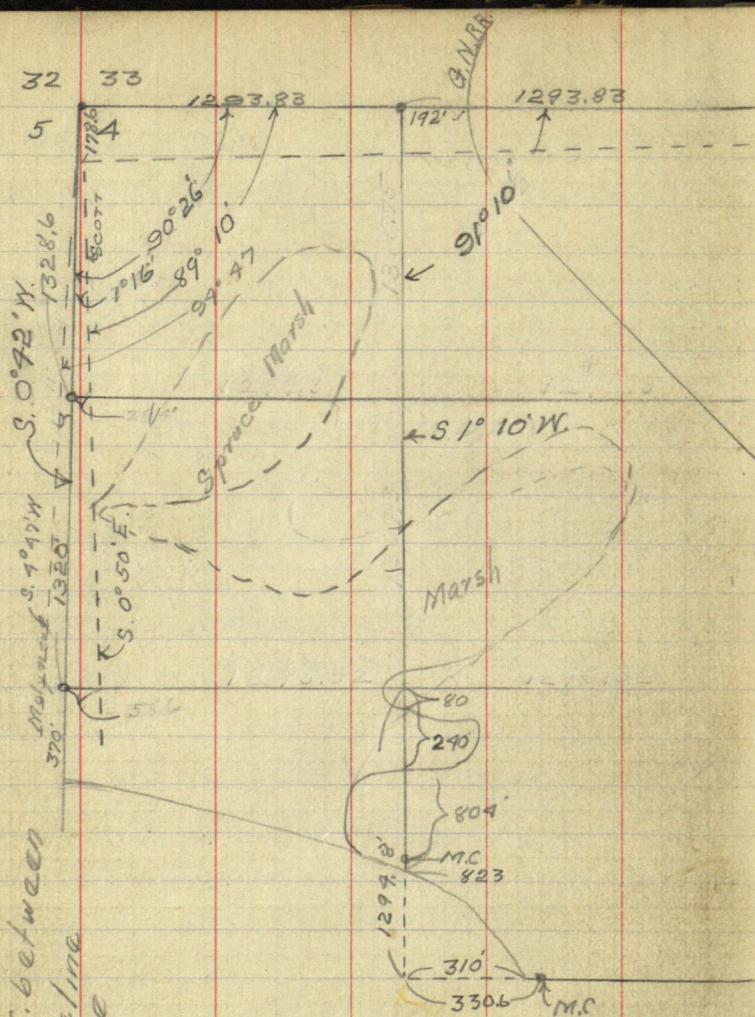
$$90041$$

$$100.151318$$



5.0°42'W  
5.0°50'E

1032 diff. between  
Scots and True/ine  
Greene





Assumed.

WEST-T.L.

1293.83

R. LINE

S. 88° 01' W.

9° 16'  
9° 22'  
9° 15'

1° 59'  
9° 41'  
80° 59'  
87° 24'

S. 89° 24' W.

S. 1° 16' W.  
S. 1° 39' W.

S. 1° 41' W.  
S. 2° 7' W.

82° 22'

2555.8  
2692  
100.3  
1272.0  
2561.5

Marsh

S. 89° 01' W.

1273.12

95° 04'  
9° 07'  
81° 59'

S. 7° 02' W.

S. 8° 10' W.

S. 88° 10' W.

S. 4° 08' W.

470.12  
44° 52'

99° 15'

S. 87° 22' W.

SMOBY



Latitudes and Departures of the corners, assuming the N.E. corner to be the initial point.

	Latitudes		Departures	
	N.	S.	E.	W.
N.E. Cor.	0.0		0.0	
E. $\frac{1}{16}$ , N. Boundary	0.0			1293.83
$\frac{1}{4}$ Cor N. Bound	0.0			2587.66
W. $\frac{1}{16}$ " " "	0.0			3891.49
N.W. " of Sec.	0.0			5175.32
N. $\frac{1}{16}$ " E. Bound		1287.9		58.5
$\frac{1}{4}$ " E "		2558.6		116.2
S. $\frac{1}{16}$ " E "				
S.E. " of Sec.				
N. $\frac{1}{16}$ " W. Bound		1328.5	10.00	5191.56
$\frac{1}{4}$ " " "		2648.4		5207.67



29 Thursday, Dec. 16, 1915

N. 1/4

5-142-31

Snowing this morning

Molyneux, O'Connell, and the two  
Clarone's on the work.

We go and locate the N. 1/4 Cor.  
on the eastern boundary, and from there  
brush and hub the N. 1/4 line

S.  $89^{\circ} 24'$  west, about  $\frac{3}{4}$  of a mile  
Quit for dinner. Snowing.

Saturday Dec. 16, 1915 - P.M.

We continue the N. 1/4 line on  
west and intersect Scotts' random  
line for the east boundary at Sta  
13+34.45.

Molyneux, O'Connell, + Chas. Clarone  
working.



E + W. 1/4

Thursday, Dec. 16, 1915

5-142-31 25

P.M. From the 1/4 corner on the E side of the section, we hiked and brush the E. + W. 1/4 line about 3/4 of a mile to the marsh.

S. 89° 01' W.

Snowing.

Dark. Quit for the day.

Sunday, Dec. 19, 1915

Molynieux and O'Connell chain the E. and W. 1/4 line as follows:

12 + ~~59~~<sup>3.0</sup> intersect the E 1/4 line15 + ~~84~~<sup>3.0</sup> " " E of R.R.25 + ~~39.4~~<sup>3.0</sup> " " N. + S. 1/4 line38 + ~~23.2~~<sup>12.6</sup> " " W. 1/4 "

38 + 25 enter open marsh

50 + 27.5 " Scott's R.L. at 26\*97.2

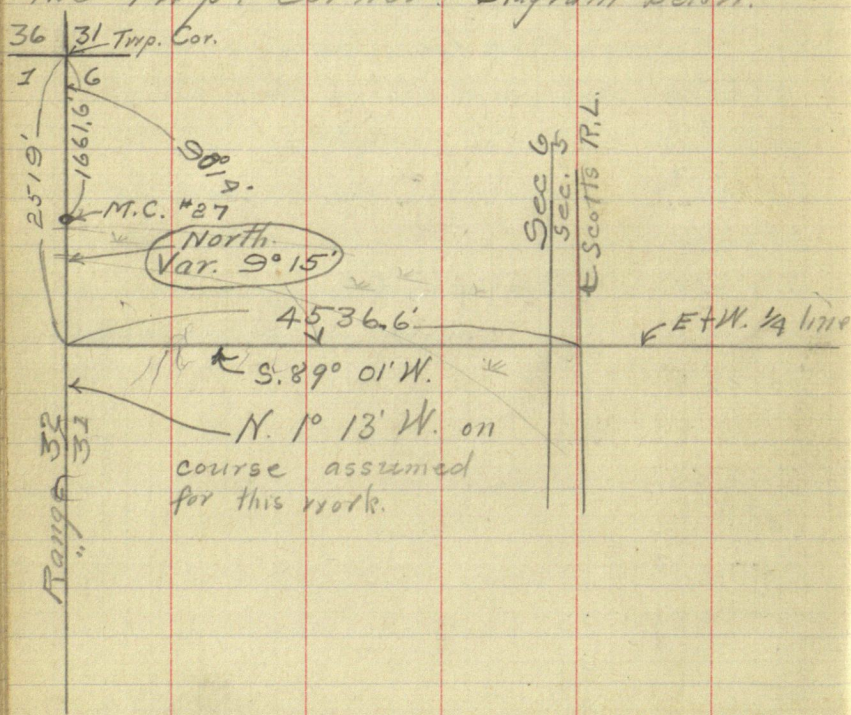
50 + 92.4

$$\begin{array}{r} 26 \\ 21 \\ 26 \\ \hline 716.6 \\ 481.2 \\ \hline 2649.2 \end{array}$$



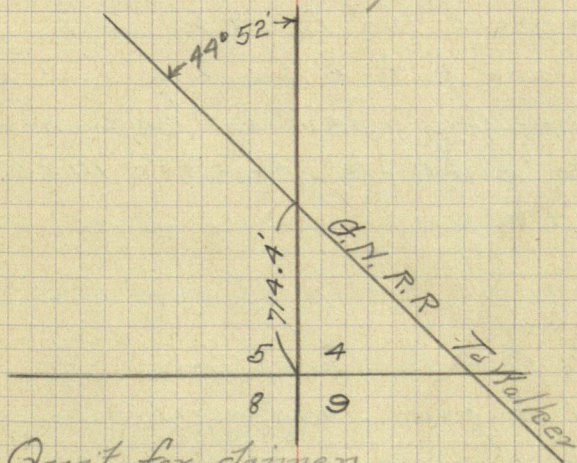
Friday, Dec. 17, 1915

Molynaux, O'Connell, and two  
 Clarences, go to west side of Sec 5 and  
 pick up E. & W.  $\frac{1}{4}$  line, and hub the  
 same west, where this line crosses Scotts  
 random line for the west side of Sec 4  
 we commence chaining and continue west  
 to Range Line, on which we find M.C.  
 corner on north bank of lake and  
 the Twp. corner. Diagram below.





We now go to east boundary and  
I range into line bet the S.E. Cor of  
Sec. 5, and the  $\frac{1}{4}$  corner of 4+5  
and drive a nail in center of track  
and measure from corner to track.  
and measure the angle



Quit for dinner.

P.M. same crew.

We go to the  $\frac{1}{4}$  corner on north  
side of Sec. 5 and brush and hub a line  
S.  $1^{\circ} 22' W.$  for  $\frac{3}{4}$  of a mile intersecting  
the N.  $\frac{1}{16}$  and the E. & W.  $\frac{1}{4}$  line. This line  
should have been run S.  $1^{\circ} 16' W.$

S.M. Holyman



28

E.  $\frac{1}{16}$  LINE.

Sat. Dec. 18, 1915

5-142-31

Malynoux, O'Connell, Alvin + Chas Clare  
working.

We go to the E.  $\frac{1}{16}$  corner on  
the north boundary, and brush and hub  
a line  $S 1^{\circ} 41' W.$  intersecting the N.  
 $\frac{1}{16}$  line and the E + W.  $\frac{1}{4}$  line.

We now go to E. boundary and run  
east boundary line from  $\frac{1}{4}$  corner on  
east side south to track 1785.6

1785.6

714.4

2500.0 length of east boundary

from  $\frac{1}{4}$  Cor to Cor of Secs  $\frac{5}{8} \frac{4}{9}$

We set a point midway between  
these corners. - 1250'

Quit for dinner.



Sat. Dec. 18, 1915

5-142-31

Molynaux, O'Connell & Chas. Charene.  
go to N.  $\frac{1}{16}$  line and brush and hub a  
line S.  $1^{\circ} 10' W$  intersecting the  
N.  $\frac{1}{16}$ , and the E & W  $\frac{1}{4}$  lines.  
Quart for night.

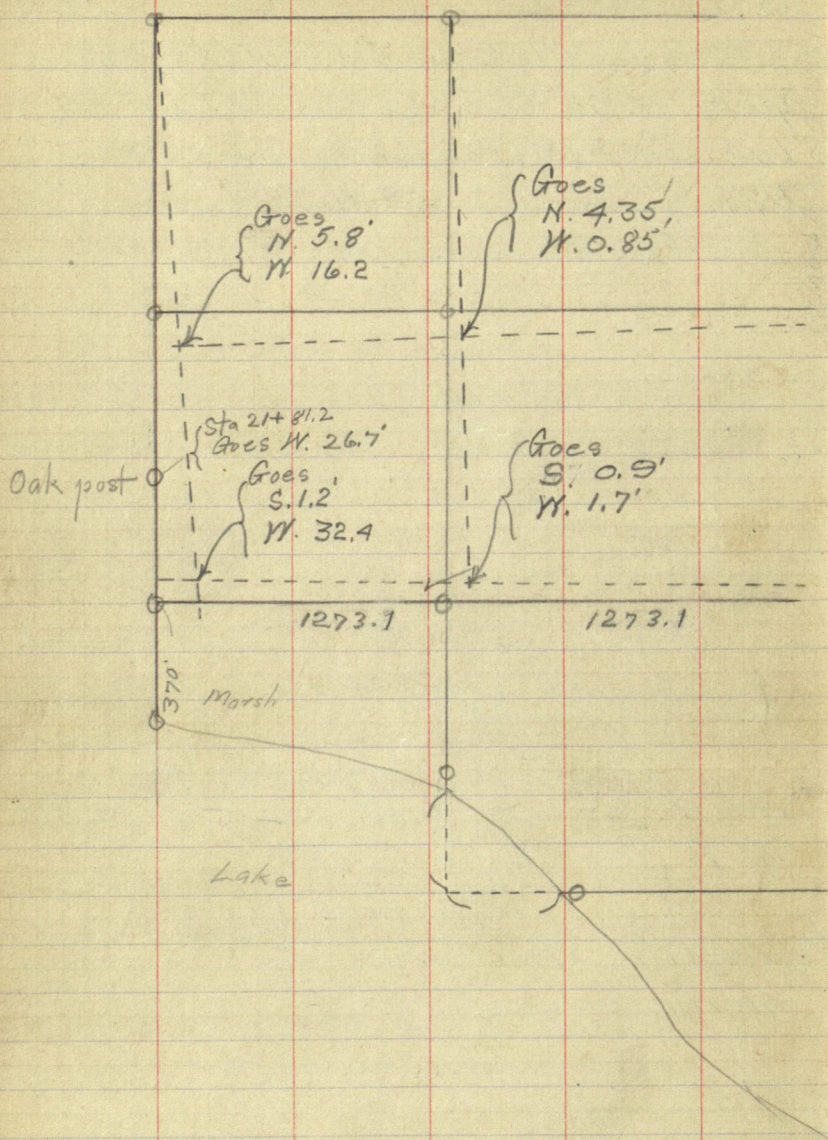
Sunday - Dec. 19.

Molynaux & O'Connell chain  
E & W  $\frac{1}{4}$  line and some on Scott's  
W. B. — R. L. — A. M.

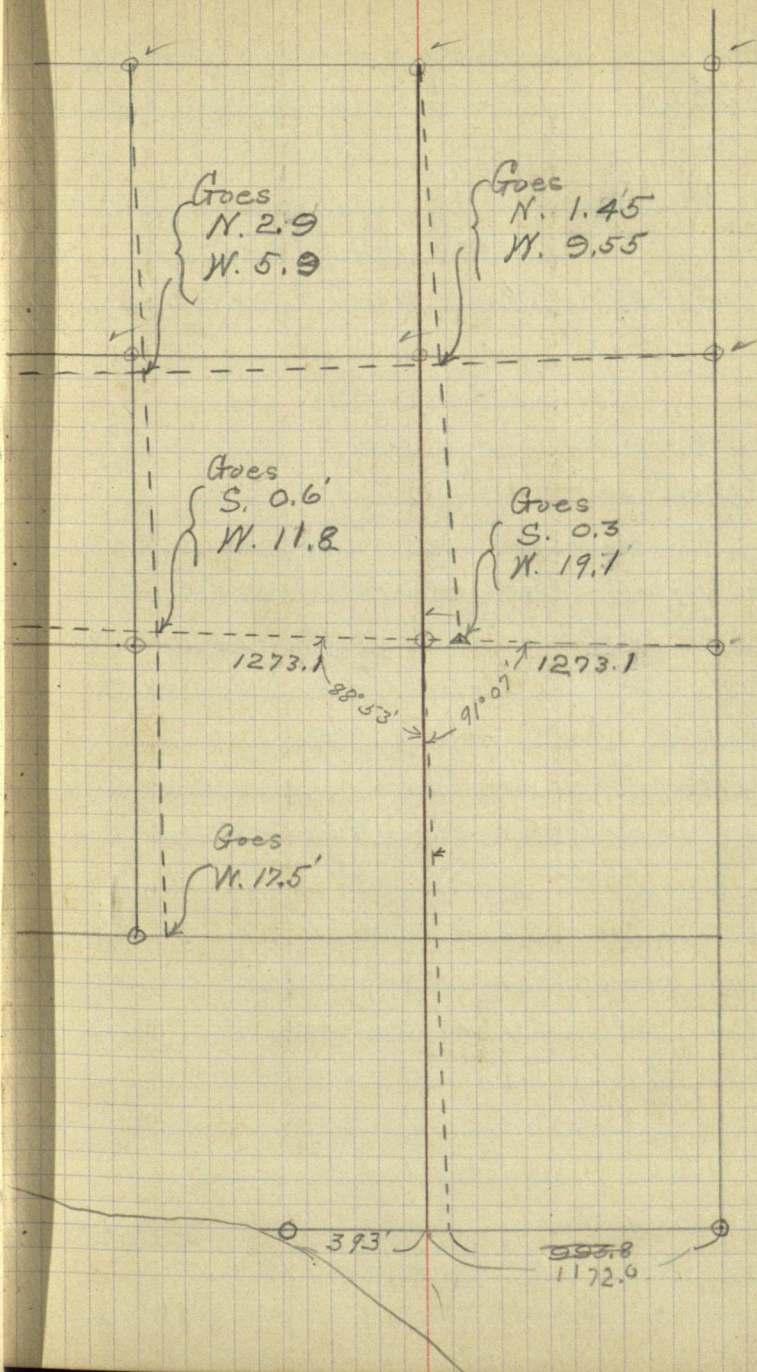
P. M. Molynaux figures  
corrections from cross lines to set  
interior corners.

D. M. Molynaux











Monday, Dec. 20, 1915

5-142-31

Molyneux O'Connell, and the two Clarenes working.

Measure angle at S.E. corner -  $99^{\circ}15'$

Course of south boundary is  $S.87^{\circ}22'W.$

From the  $S. \frac{1}{16}$  corner on east boundary we run  $S. 88^{\circ}10'W$  and brush and hub a line west to the lake.

P.M.

O'Connell to town.

Molyneux and the Clarenes working.

We spot the  $N. \frac{1}{16}$  Corner on the west boundary, also the  $\frac{1}{4}$  corner and an M.C. on lake shore south of the  $\frac{1}{4}$  Corner  $370'S.$

We then brush and hub the  $N. \frac{1}{16}$  line south from the  $N. \frac{1}{16}$  corner on the E & W.  $\frac{1}{4}$  line as follows:

0+80 enter open marsh.

2+70 leave " "

8+04 Set point on lake bank for M.C.

8+23 Shore line

12+998 intersect  $S. \frac{1}{16}$  line on the ice

Thence measure east on  $S. \frac{1}{16}$  line

3+10 shore line

3+30.6 Pt. on lake bank for M.C.



From this point - the M.C. on the S.  $\frac{1}{16}$  line, I run a meander line along the lake shore as follows.

Sta	Course	Dist	Remarks
1	N. $27^{\circ} 30' W$ .	350'	N. $27^{\circ} 30' W$ M.C. S. $\frac{1}{16}$ line
2	N. $44^{\circ} 30' W$ .	217'	to W. $\frac{1}{16}$ line
3	N. $32^{\circ} 15' W$ .	128.6'	
4	N. $22^{\circ} W$ .	178'	Shore and marsh meet
5	N. $80^{\circ} W$ .	1080.5'	To W. B. of Sec. 4 M.C. 370' S. of $\frac{1}{4}$ Cor.

Quit for the day

Dec. 23, 1915.

Commencing at the M.C. on south boundary of Sec. 5 I run as follows.

1	N. $83^{\circ} 45' W$ .	391 ft.	80' S. B. of Sec. 5
2	N. $58^{\circ} 00' W$ .	382 "	
3	N. $35^{\circ} 30' W$ .	351 "	
4	N. $57^{\circ} 00' W$ .	324 "	
5	N. $41^{\circ} 00' W$ .	702 -	To M.C. on S. $\frac{1}{16}$ line

*Dr. J. H. Jones*



Tuesday, Dec. 21<sup>st</sup> 1915

5-142-31

Molyneux, O'Connell, & the two Clarks working. Day cold and fine.

Work setting iron monuments to day

Set the following corners.

$\frac{1}{4}$  corner east side, 2 pits, N + S, mound

The stump of one old BT still standing and marked plainly.

N.  $\frac{1}{16}$  Cor on E. boundary. sets in marsh iron sets on oak pole 10' long drove into marsh solid, top of iron 12 inches above ice.

The following bearing trees

Red Oak, 12" D., S 63° 30' W. 57.8 feet

" " 8 " S. 1° E. 61 "

N. E. corner of the section, sets in marsh iron sets on oak piling 6' long, drove solid in the marsh with top of iron 15" above the ice.

The following bearing trees.

Norway Pine 12" D., N. 15° 30' E. 224 feet.

" " 12 " N. 22° 30' W. 170 "

Oak 20 " S. 49° W. 207.4 "

E.  $\frac{1}{16}$  corner, N. boundary. Sets at corner of fence, dug pit 6' to east and built mound around corner



$\frac{3}{4}$  corner, north boundary, sets 3' west of fence corner, dug pit 6' to west and built mound around the I. M.

Center of North Half. Drove I. M, dug pit 6' to south and built mound around the I. M.

Center of N.E.  $\frac{1}{4}$ , Drove I. M, dug pit 6' to south and built mound around I. M.

Noon - Quit for dinner

P. M.

Center of E.  $\frac{1}{2}$ , Drove I. M, dug pit 6' to south and built mound around the I. M.

Center of Sec., Drove I. M., dug pit 6' to south and built mound around the I. M.

Center of the W.  $\frac{1}{2}$ , Drove I. M, dug pit 6' to south and built mound around I. M.

Center N. W.  $\frac{1}{4}$  Drove I. M., dug pit 6' south and built mound around the I. M.

W.  $\frac{1}{16}$  Cor, North boundary, drove I. M., dug pit 6' to west and built mound around I. M.

N. W. corner, Drove I. M. dug pit 6' to south and built mound around the I. M.

N.  $\frac{1}{16}$  Cor. west boundary, Drove I. M., dug pit 6' to south, and built mound around I. M.

Pits dig hard, frost 4" to 16" deep ice about 10" thick. Fine cold day

Quit work at dark.

J. M. G. Molyneux



Wednesday, Dec. 22, 1915

5-142-31

Molynieux and Chas Clamme working

Drive Red Oak post 4" x 4" x 4'

30" in the ground on north bank of marsh on west boundary line of Sec. 5, 2180 feet south of the north west corner of the section

1/4 Cor. of west side, sets in marsh

I.M. sets on oak piling 10 feet long drove firmly in marsh. Cap of I.M. is 15" above the ice.

M.C. west boundary line and north bank of Kabakona Bay, set north 15 feet in marsh

I.M. sets on oak piling 10 feet long and drove firmly into the mud and sand of the marsh

We now go to the Trip. Cor at the N.W. corner of Sec. 6

T. 142, R. 31 and set an I.M. on tamarac piling 6 ft long drove firmly into the mud and sand of the tamarac swamp.



M.C. on W.  $\frac{1}{16}$  line of Sec. 4 and  
N.E. shore of Kabekona Bay.  
Drive I, M. 36 inches in the  
ground and dig a pit 8 ft  
on line to the north and  
build mound around I, M.

Snowing all A.M. nasty day  
Quit for dinner

~~TX~~

P.M.

Same crew

M.C. on S.  $\frac{1}{16}$  line N.E. shore of  
Kabekona Bay. Drive I, M.  
36" in the ground, dig a pit  
6 feet to the east and build  
a mound around the I, M.

Center of S.  $\frac{1}{2}$ , drive I, M. 36" in the  
ground, dig a pit 6 feet to the  
north, and build a mound around  
the I, M.

M.C. on S. boundary line and N.E.  
shore of Kahakong Bay. Drive  
I, M. 36" in ground to corner  
on reef 4 feet from lake shore



S. E. corner of the section.

Set I. M. on a 6 foot red oak piling and drive same firmly into mud and sand of the marsh. Cap of I. M. stands 16" above the ice.

Quit for the day.

Stormy (snow) nasty day.

—H—

Thursday Dec. 23, 1915

Molynaux, O'Connell, and the two Clarines. Fine day

E. 1/16 Cor. S. boundar, I. M. sets on oak piling 6' ft. long firmly drove in the swamp.

We now run travers line along lake shore of lot 7.

See page 33.

S. 1/16 Cor on E. B. I. M. sets on oak piling 6' long driven firmly into the marsh and top of iron 15" above the ice.



Track measurements, along the  
Great Northern R.R. from the inter-  
section of the C of the R.R. with  
the E. boundary of Sec. 5.

0+00

= intersection.

6+58.4

intersect the S.  $\frac{1}{16}$  lineE.S.  $\frac{1}{16}$ 

470.2

17+68.6 intersect E.  $\frac{1}{16}$  line

22+24

" E. + W.  $\frac{1}{4}$  lineE. + W.  $\frac{1}{4}$  line

310.5

Center  
of E.  $\frac{1}{2}$ 

37+27.4

" N. + S.  $\frac{1}{4}$  line

E. of R.R.

353.8'  
E.  $\frac{1}{16}$ 

38+49.7

" N.  $\frac{1}{16}$  "

54+91.7

" N. Boundary

E. N. Boundary

192'

N. + S.  $\frac{1}{4}$  lineC. of N.  $\frac{1}{2}$ 78.5  
78.678.5  
78.6E. N.  $\frac{1}{16}$  line

G. N. Polymers