

Sec. 14 T139

79.

MINNAPOLIS
TRANSIT BOOK
363

Haukeemish Hotel 1.00

to Backo 16

Wahkato Hack. 33

9 10 11 12
16 15 14 13
21 22 23 24

①

Location	INDEX	In Charge	Page
143-27			21-32
14-139-30		Donner	33-45
"	"	Time	36
"	"	Gorman	50-65
"	"	E. line	50
"	"	E. " R+T. "	51-
"	"	Time	54
"	"	S. line R+T. "	55-57
"	"	N. " R. "	58-61
"	"	" " R+T. $11\frac{1}{2}$	64+65
"	"	" " R+T	62-65
"	"		
"	"	E side	71 to
"	"	N. " E $\frac{1}{2}$	71
"	"	$\frac{1}{4}$ line N. & S. Ran	71-73-85
"	"	E. $\frac{1}{16}$ Ran.	72-73
"	"	W. $\frac{1}{16}$	73-74-85
"	"	Time Sheet	75-77
"	"	S. Sec. line	78
"	"	S. $\frac{1}{16}$ line	80-81
"	"	E. + W. $\frac{1}{4}$ line	81-82
"	"	N. $\frac{1}{16}$	83-
"	"	W. side	84-87
"	"	Strip on N. side Lot 3	92
"	"	Meander	103-105
"	"	" Portage Lake	88-90
"	"	" Rainy "	93
"	"	" Bass "	95
"	"	Corners Set 99-102	85-91-92-98
"	"	Corrections	97
"	"	set	" Y 104
28-142-31	E. Line, R. Curv + Molyneux		67
134-30	Road Surv.	Gorman	126-132
134-31	" "	"	138-141

Subdivision Hammond Tract in Sec 14-139-30, 110.

Lamour Tract - Sec 13-139-30 - 123-124

Levels of Onigum. - Res 193

2

328:

cloudy

Feb. 20, 1915

All day @ Hackensack
Curo and I talk 4:19
train for Walker. We
get notes for 143-27 &
143-28 and do other
work.

We take midnight
train back to Hackensack.

Feb 21, 1915

Sunday all day @
Hackensack dinner with
J. W. C.

Supper @ Hotel. I pay
Chester \$2.00 for Hotel Bill
in full.

328:

143-27 328 warm.

3

Feb. 22, 1915 Work for O'prahl.
A. M.

I leave Hackensack for
Boy River via Bemidji.
R. R. fare from Hackensack to
Bemidji \$90 from Bemidji
to Boy River \$90.

Breakfast \$40 @ Bemidji
Total \$2.20

I get to Boy River about
11 o'clock. I find Elmer
Madson (the clerk) and
we walk out to camp.

Dinner @ camp.

P. M.

Being Washington's birthday
I work in office and the
Madson & I take a load
of logs to Boy River and
bring out my outfit.
Supper and over night
@ camp.

4

328

(3)

143-27 warm & clear

Feb. 23, 1915 Cont. for Opreahl
A.M.Starting from the
Sec. corner of Secs. 28-29-

32-33-143-27 where

U. S. notes call for

Spruce 8 S 54 E 11

Willow 7 N 45 W 16

Spruce 10 S 71 W 18

" 10 N 47 E 17

I find a 4" post set by
Curo for the true Sec.
corner. I run east
with small compass
and look for the
Sec. corner of Secs. 27-
28-33-34-143-27.

Tamar 6 S 46 W 32 = 21.13 ft.

Cedar 7 S 35 E 9 = 6.77 ft.

" 6 N 68 E 13 = 8.58 ft.

W.P. 12 N 79 W 12 = 7.08 ft.

I find the N. E. B. T. down
but plainly marked.

Dinner @ camp.

328

④
143-27

328!⁵
warm & clear.

Feb. 23, 1915 Continued
P.M.

I run a compass line
bet. Secs. 27-34-143-27,
bet. 26-35 and bet. 25-36
-143-27. I look for the
sec. corners here but am
unable to find any.

Feb. 24, 1915 Cont. for O psahl.
A.M.

Frank Prusnik, Alfred Johnson
and I walk out to the
sec. corner of Secs. 27-28-33
+ 34-143-27 where I set
a 60' spike from the N.E.
B.T. for the true sec. corner
with new B.T.S. viz.

Smag 8 N 4° 49' W 52.20 ft.

" 14 N 39° 15' E 73.40 ft.

" 8 S 37° 26' W 6.90 ft.

var 8° 45'

I run N 89° 55' E var. 8° 45'
@ 4+50 enter marsh.

328

6 328

143⁽⁵⁾ - 27

Feb. 24, 1915 Continued

A.M.

@ 6 leave marsh

@ 9 + 96.8 set Hub.

Quit for dinner @ Camp.

P.M.

We continue east.

@ 12 enter swamp

@ 16 + 5.9 set Hub.

@ 18 + 25 leave swamp

@ 22 + 49.7 set Hub.

@ 27 enter meadow

@ 27 + 50.8 set Hub

@ 34 + 75 leave meadow

Quit for the night.

Over night @ Camp.

328 !

Working for J. J. Opsahl - /43-27

February — March —

22 23 24 25 26 27 28 1 2 3 4 5 6 7 8

Frank A. Danner

Expenses

Frank Pursnik

No. 1 Alfred Johnson ^{clear} Break Min.

Jim Mushkin

Harry Jako

Alfred Johnson Gd. Fks. N.D.

John W. Curo

1	1	1	1	1	1	1	1	1	1	1	1	1	1	1	1	1
4.20	0	0	0	0	0	0	0	0	0	0	0	0	0	0	0	0
0	0	1	1	1	1	1	1	1	1	1	1	1	1	1	1	1
0	0	1	1	1	1	1	1	1	1	1	1	1	1	1	1	1
0	0	0	0	0	0	0	0	0	0	0	0	0	0	0	0	0
0	0	0	0	0	0	0	0	0	0	0	0	0	0	0	0	0

1	1	1	1	1	1	1	1	1	1	1	1	1	1	1	1	1
0	0	0	0	0	0	0	0	0	0	0	0	0	0	0	0	0
1	1	1	1	1	1	1	1	1	1	1	1	1	1	1	1	1
1	1	1	1	1	1	1	1	1	1	1	1	1	1	1	1	1
1	0	0	0	0	0	0	0	0	0	0	0	0	0	0	0	0
1	0	0	0	0	0	0	0	0	0	0	0	0	0	0	0	0

⑥

328 :

7

328 :

8 328!

143-27 warm & clear
Feb, 25, 1915 Cont. for Opsahl
A. M.

We continue east.
@ 41 + 3615 set Hub.

@ 47 + 6.1 " "

Quit for dinner @ Greens
camps

P. M.

We continue east.

@ 53 we look for the
Sec. corner of Sec. 26-27-34-35
- 143-27 - where U.S. notes
call for.

Tam 125 40 W 14 = 9.24 ft

" 6 S 13 E 13 = 8.58 "

" 6 N 11 W 15 = 9.90 "

" " N 69 E 11 = 7.25 "

I find the S.E. - N.W. - N.E. B.S.
from which I set a
4" x 4" x 24" cedar Hub 12"
in ground for the true Sec.
corner.

@ 53 + 59, 8 the true Sec. Cor.
sets south 75.10 ft.

328

F. A. Donner.

⑧

328

⑨

143-27

warm & clear

Feb. 25, 1915. Continued.

P.M.

Sec. Cor.

27-28-33-34

Sec. Cor.

26-27-34-35

5359.80 ft.

75.1 ft.

I set on true Sec. corner
of Secs. 26-27-34-35 - 143-27
and run $N 89^{\circ} 58' E$

var. $10^{\circ} 30'$

We run to about 6 and
quit for the night.

Over night @ Madison's camp.

Feb. 26, 1915. Cont. for Opsahl.

A.M.

We continue east

@ 13+27 set Hub

@ 23+56.8 " "

@ 31+41.7 " "

@ 38+35.1 " "

We run to about 50
and quit for the night.
Over night @ Madison's
Camp.

328

10 328: 143-27 ^⑨ warm & clear
Feb. 27, 1915 - Cont. for Opreahl
A.M.

We continue east.

@ 53 we look for the Sec.
corner of Secs. 25-26-35-36
- 143-27 where U.S. notes
call for viz.

Spruce 10 S 55 W 50 = 33.00 ft.

Fir 6 N 6 W 10 = 6.6 ft.

" " 584 E 9 = 5.9 ft.

" " 5 N 37 E 14 = 9.24 ft.

As we are unable to
find any of the old B.T.S.
we continue east.

@ 55 + 6.2 set Hub

@ 67 + 17.6 " "

@ 73 + 73.6 " " Dinner in woods.

@ 80 + 44.2 " "

We look for the $\frac{1}{4}$ Sec.
corner between Secs. 25-
36-143-27 where U.S. notes
call for viz.

Fir 10 N 6 W 14 = 9.24 ft.

Birch 6 S 66 W 13 = 5.85 ft.

(10)

328 :

143-27

Feb. 27, 1915 Continued

P.M.

I find the S.W. bearing tree down but plainly marked from which I set a 60' spike for the true $\frac{1}{4}$ Sec. corner bet. Secs. 25-36-143-27 with new bearings viz.

Birch $8 N 69^{\circ} 35' W 15.8$ ft.

" $16 S 50^{\circ} 15' E 55.05$ ft.

W.P. Stump $10 N 51^{\circ} E 52.35$ ft. var $9^{\circ} 45'$

@ $81+37.7$ the true $\frac{1}{4}$ Sec. corner (just established by Donner) sets north 132.6 ft.

26-27-34-35

 $\frac{1}{4}$ Sec. cor. bet.

Secs. 25-36

8137.7 ft.

132.6 ft

Donner Transit man.

Starting @ the true $\frac{1}{4}$ corner bet. Secs. 25-36-143-27 I run $N 89^{\circ} 58' E$ var $10^{\circ} 45'$ @ $9+78.7$ set Hub.

Quit for night @ Camp.

F.A. Donner.

328 :

12

328

(11)

Sunday, 143 - 27 warm & clear
Feb 28, 1915. Cont. for \odot posibl.
A.M.

We continue east.

@ 13 + 13 set Hub

@ 26 + 46.8 " "

We look for the S.W.^{SE}
Sec. corner of Sec. 25 -

143 - 27 where U.S. notes
call for vtz.

Fin 105 38 E 21 = 13.86 ft.

" " 8 N 40 E 33 = 21.85 ft.

Brick 85 78 W 9 = 6.77 ft.

" 10 N 59 W 13 = 8.58 ft.

We are unable to find
any of the old B. S. S. here
so we quit for dinner.
Dinner in the woods.
P.M.

Start @ the $\frac{1}{4}$ Sec. Cor.
bet 25 - 36 - 143 - 27 Run
North var. $9^{\circ}30'$

@ 7 + 85.2 set Hub

@ 16 + 47.6 " "

@ 27 + 78.2 " "

Quit for night @ camp.

328

Dinner

(12) 143-27 328 cloudy 13

March 1, 1915. Cont. for Ipsahl.
A.M.

We continue north.

@ 41 + 30.7 set Hub

@ 53 we look for the $\frac{1}{4}$
corner between Secs. 24-25

- 143-27 where U.S. notes call
for viz.

Fir 16 S 55 W 16 = 10.5 ft.

Maple 15 N 28 W 37 = 21.5 ft.

We are unable to find
any of the old B.T.S. so we
continue north.

@ 56 + 3.1 set Hub.

@ 58 + 26.5 " "

Quit for dinner in woods.
P.M.

@ 63 + 26.4 set Hub

@ 68 + 41.2 " "

@ 71 + 11.4 " "

@ 78 + 19.5 " "

Quit for night @ camp.

14

328

(13)

143-27

clear

March 2, 1915, Can't for 3 psahl.
A.M.

We continue north.

@ 87 + 25.7 set Hub

@ 89 + 93.2 " "

Quit for dinner in woods.
P.M.

We continue north.

@ 93 + 78.9 set Hub

@ 99 + 7.3 " "

@ 106 + 91.4 the true $\frac{1}{4}$ sec.
corner bet. Secs. 13-24-143-
27 (this corner was set by
the state Eng'rs.) sets west
43.00 ft.

To this corner I find one
approx 6' bearing tree with nail in
which bears $N 3^{\circ} 5' W$ 39.6 ft.
var. $9^{\circ} 30'$

Quit for the night @ camp

North

$\frac{1}{4}$ Cor. bet. \nearrow

13-24 \nearrow

43.00 ft.

106 91.4 ft

South

\nwarrow $\frac{1}{4}$ Cor.

bet. 25-36

328

dinner

14
143-27

328

15

March 3, 1915 Continue for Opssabl.
A.M.

Correcting back on random
line between Secs. 25-36 &
26-35-143-27

Hub @ 5376.6 goes north 87.58 ft.
when I set a 4"X4"X36" oak
post 1' in ground for a temp.
Sec. corner for Secs. 25-26
-35-36-143-27 with new
bearing viz.

Balm. Bal. 3562°28'E

var. 9°30'

Starting from this corner
I run south var. 9°20'
@ 2+90.8 set Hub
Quit for dinner in woods.
P.M.

Continue south
@ 18+63.3 set Hub
@ 25+25 enter cedar swamp
@ 25+44.9 set Hub.
Quit for night @ camp.

328

143-27 clear

March 4, 1915. Cont. for Ipsahl.
A.M.

We continue south
@ 26 + 40 we look for
the $\frac{1}{4}$ corner between Secs.
35-36 where U.S. notes
call for veg.

Cedar 6 East 10 = 6.6 ft

" 6 S 66° W 12 = 7.08 ft.

I find the East B. T.
standing and plainly
marked from which I
set a 4" x 4" x 36" cedar post
for the true $\frac{1}{4}$ corner bet.
Secs. 35-36 - 143-27.

@ 27 + 51.8 the true $\frac{1}{4}$ corner
bet. Secs. 35-36 set west
35.70 ft.

We continue south
with random line.

@ 31 leave cedar swamp

@ 33 + 64.9 set Hub

@ 39 + 13.6 " "

Quit for dinner in woods

16
143-27

328 17

March 4, 1915 Continued.

P. M.

We continue south

@ 45 + 90.2 set Hub

@ 52 we look for the S. W.
Sec. corner of Sec. 36 - 143-27
where U.S. notes call for vig.

Birch 8 S 51 W 39 = 25.24 ft.

Fir 8 N 13 W 23.

" 6 N 32 E 24 = 14.16 ft.

Maple 6 S 52 E 18 = 11.88 ft.

We find the N.E. & the S.W.

B. S. S. standing and plainly

marked from which I set
a 4" x 4" x 48" cedar post 12" in
ground for the true S. W.
Sec. corner of Sec. 36 - 143-27.

@ 51 + 97.6 the true Sec. corner
set west 87.60 ft.

I set new B. S. S. vig.

328

18

328

(12)

143-27

March 4, 1915. Continued.

P.M.

Beginning from a point in the county road near the $\frac{1}{4}$ corner between 28-33-143-27 we run transit line east.

Quit for night @ Osprey
Red River Lbr. Co. Camp No. 1.
near Center of Sec. 22-143-27

328

18

143-27 cloudy & snowy. 19

328

March 5, 1915. Cont. for Ojpsahl.
A. M.

We continue transit line east
to the Sec. corner of Secs.

27-28-33-34-143-27.

Then walk to Bay River
meet Curo who drives
from Bemidji.

Curo & I walk out
to camp for dinner.
P. M.

Beginning @ turnp. Corner
of Secs. 25-26-35-36-143-27
and start Pursnik & Johnson
No. 2 cutting picket line
north bet. Secs. 25-26.

Curo & I walk to the
1/4 corner bet. Secs. 24-25
Quit for night.

Still @ Ojpsahl's camp.

328

(19)

143-27 clear.

Continue for 9 psal.
 Saturday March 6, 195
 A.M.

Crew continue line
 North bet 25-26.

Curo & I walk to the
 $\frac{1}{4}$ sec. bet. 24-25-143-27
 where U.S. notes call for

Maple 15 N 28° W 37 = 24.42 ft.

Fir 16 S 55° W 16 = 10.56 ft.

We find the Maple standing
 green plainly marked and
 the rotted stump of the
 Fir from which we
 set the true $\frac{1}{4}$ corner
 by flat chain from four
 of old B. T. S. after which
 the old B. T. S. stand viz.

Maple 15 N 18° W 24.42 ft.

Fir 16 S 85° W 10.56 ft.

var. 9°

We set a 4" x 4" stake
 and mark new B. T. S. viz.

W.P. 12 S. 38° W 54.10 ft.

Birch 14 S. 59° E 34.30 ft.

var. 9°

328

Lemon

(20)
143-27

328. 21

March 6, 1915 Continued.

A.M.

At a point in our transit line 5362.70 ft. N. off the $\frac{1}{4}$ bet. 23-36 the $\frac{1}{4}$ bet. 24-25 sets east 88.50 ft.

Connecting N. & S. center line true Sec. 24-143-27

@ 6694.88 = (1332.18) we chain east 55.85 ft. and set tall stake braced and marked "True N. & S. center line" "Road Center" Temp. $\frac{1}{16}$ "

@ 8027.06 = (2664.36) we chain east 22.90 ft. where we set tall stake braced and marked "True N. & S. center line" "Road Center" "Temporary Center."

@ 9359.34 = (3996.54) we chain west 10.05 ft. where we set tall stake braced & marked "True N. & S. Center Line" "Road Center" "Temporary $\frac{1}{16}$."

@ 10691.40 = (5325.70) the $\frac{1}{4}$ bet. 13-24 sets west 43.00 ft. Thinner @ Camp N. 3.

328 !

22

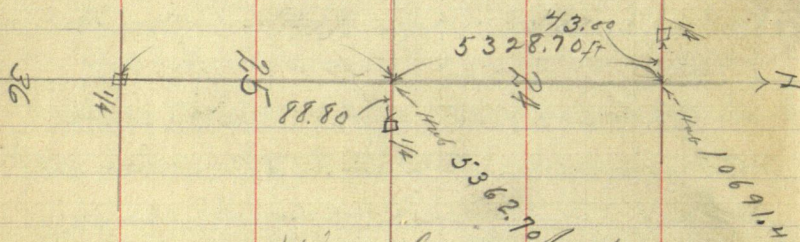
328

143-27

(21)

March 6, 1915 Continued
P.M.

Donner & Pursnick
correct the N. & S. center
line of Sec. 25-143-27 viz.
@ 5362.7 the $\frac{1}{4}$ Corner sets east 88.70 ft.



@ 4022.01 We chain East 66.60 ft.
and set tall stake marked
"Temp. $\frac{1}{6}$ True N & S Center Line"
"Road Center"

@ 2681.24 we chain East 44.40 ft.
and set tall stake marked
"Temp. Center" "True N & S
Center Line" "Road Center"
"Temp. Center of Sec. 25-143-27"

@ 1340.67 we chain East
22.20 ft. and set tall stake
marked "Temp. $\frac{1}{6}$ True N & S
Center Line"

598

Donner

(22)

143-27

328

23

March 6, 1915 Continued

P.M.

Curo and the two Johnsons
begin @ the ^{1st} corner of an
old camp being the assumed
corner to Secs. 25-²⁶~~36~~ 23 24
- 143-27 and chain south
over cut out picket line
@ 2640 we look for the
 $\frac{1}{4}$ corner bet. 25-26 where U.S.
notes call for viz.

Aspen 6 N 55 W 8 } gone

Birch 10 S 40 E 5 }

@ 5091.20 intersect stake as being
temporary corner to 25-26
- 35-36 & previous set by me
(See page 15).

The true corner sets S. 37.00ft.
and West 24.40ft. @ this

At this point begin the Cor.
to Secs. 25-26 - 35-36 - 143-27
U.S. notes call for a post
and viz. bearing trees,

Spruce 10 S 55 W 50 = 33.00ft.

Fir 6 N 6 W 10 = 6.60ft.

328

193-27

March 6, 1915 Continued.

P.M.

F. i 6 S 34 E 9 = 594 ft.

F. i 5 N 37 E 14 = 924 ft.

We find the 5'x5" dead spruce tree squared up on four sides very old and broken over also the remains of the old stake also the S.E. B.T. down and out by the roots faintly marked, also old roots which we believe to be the remains of the old bearing trees.

We set a 3"x3"x48" post for the true corner @ a point where we find the old stake which is against the S.E. side of the old squared up tree and chucks out for course and dist. with the remains of the old bearing trees as above mentioned and marks New B.T. S. by.

(24)
143-27

328 · 25

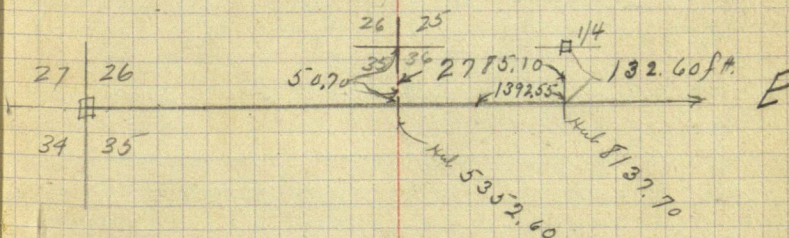
March 6. 1915 Continued
P.M.

W.P. Stump 40 S 24° 30' E 30.90 ft.
" " " 40 S 47° W 36.00 ft.

two nails driven in flat
spots var. 9°

Correcting the west half
mile bet. 25-36-143-27

At a point on our random
line 6745.15 East we chain North



91.65 ft. when we set a 4" X 4" X 48"
stake for the true west 1/4 bet.
25-36 with New B. T. 5003.

W.P. Stump 14 S 31° 30' E 43.10 ft.
Aspen 5 N 56° E 39.00 ft. } var. 9°

To correct the between
26-35

At 5352.60 east the true Co.
to 25-26-35-36-143-27 sets

328

26

328 :

(25)

143-27

March 6, 1915 Continued

P.M.

North 50.70 ft.

At 4014.45 we chain North
38.02 set 4" x 4" x 48" for true
East $\frac{1}{2}$ between 26.35 new
B. & S. vty.

Root of Burnt W.P. stump 30
bears S $37^{\circ}30'E$ 42.00 ft.

W.P. stub 20 N $49^{\circ}E$ 31.80 ft.
Quit for night @ Oprohls camp.

328 .

Donner

(26)

143-27

328 : 97

Sunday March 7, 1915 Cont. for Opsahl.
A. M.

Curo & Donner still correcting.
At 1338.15 we chain North 12.76 ft.
where we set a 4" x 4" x 48" Aspen
post for the true west $\frac{1}{16}$ corner
bet. Sec. 26-35. Nailed to a 3"
Aspen which stands a foot N.E.

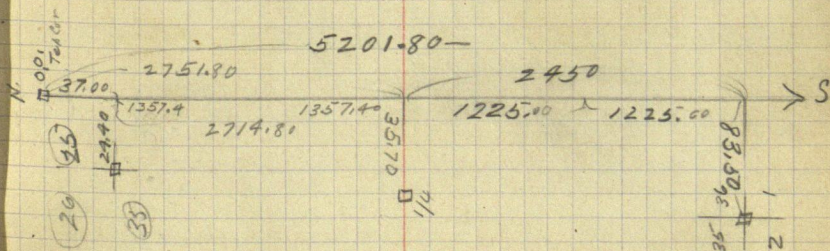
@ 2676.30 chain North 25.35
Set true $\frac{1}{4}$ corner bet. 26-35

143-27 New B. J. S. viz.

W.P. stump 40 S 41° E 85.08 ft.

" " " 40 S 60° W 42.20 ft.
var. 9°

Correcting line bet 35-36
At a point in our random line



@ 1394.40 we chain west 30.05 ft.
where set the true N. $\frac{1}{16}$ bet.

Secs. 35-36-143-27 Braces nailed to post.

328

Sunday, March 7, 1915 Continued
A.M.

At 3976.80 we chain west
59.60 ft. where we set the
true S. $\frac{1}{16}$ part. bet. 35-36.
New B. T. 5 veg.

Cedar 7 S 56° W 59.0 ft.

" 14 S 88° E 41.0 ft. var. 9°

At 5201.80 the true corner
to Secs. 35-36-1-2 set west
83.50 ft.

At this point being the
corner to 1-2-35-36-set.

142-143-27- U. S. notes say

Birch 8 S 51° W 39: 25.24

Fir 7 N 13° W 23:

" 6 N 32° E 24 = ^{15.84} 14.16

Maple 6 S 52° E 18:

We find the N. E & S. W. trees
standing plainly marked
from which we set the true
corner by proportionate
measurement var. 8°

Dist. bet. trees via corner
is 39.40 U. S. chain and equals

(28)
143-27

328

29

March 2/9/15, Continued.
~~40.00 ft.~~ our chain 2.60 ft.
~~72.00~~ longer than U. S. chain.

B. J. prop.

74.16 U. S. = 15.09 ft. Mych.

23.24 U. S. = 26.91 ft. " " "

Old B. J. S. stand O.K. at 8° var.

The S. E. & N. W. are gone.

Mark New B. J. S. viz.

Spruce 7 S 27° W 17.50 ft.

Birch 15 S 76° E 15.30 ft @ 9° var.

Quit for dinner in woods.

P. M.

Frank Pursnick works in P. M.

Correcting line 27-34-143-27

@ 5359.70 the corner to 26-27
-34-35 sets S. 73.10 ft.

@ 4019.85 we chain S. 56.32 ft.
Set east $\frac{1}{16}$ corner.

@ 2679.9 chain S. 37.33 ft.
Set $\frac{1}{16}$ corner bet 27-34 New B. J. S. viz
Tam Stump 10 S 56° E 61.80 ft

Head W.P. Snag 12 N 38° E 97.30 ft. var. 9°

@ 1339.95 we chain S. 18.77 ft.

Set west $\frac{1}{16}$ corner bet 27-34
all are 3' x 3' x 50" cedar post brad.

328

143-27

March 7, 1915. Continued

Beginning at a point
 76.9 South of corner 27-28-
 33-34 chain west 2648 ft.
 to the $\frac{1}{4}$ corner bet. 28-33
 work transit on line
 and set stake @ 1324.0 W
 where we set compass &
 run N. 38.50 ft. and set
 3" x 3" x 48" cedar post for
 east ~~west~~ $\frac{1}{6}$ corner bet. ~~27-34~~ ²⁸⁻³³
 143-27. Nailed braces to post.
 Note. [This post is 0.30 of a foot too
 for North as we really
 started @ a point 76.5 S.
 of Sec. corner.]

At the $\frac{1}{4}$ corner bet. 28-33
 the $\frac{1}{4}$ post established by
 H. S. Todd call for new B.T. by.
 Tain Stub 10 N 61°45' W 45.6 ft.
 " " 10 N 6°26' W 52.90 ft.

We find the west stub
 has been grubbed out but
 the East one standing plainly
 marked and as a corduroy

(33)

148.27

328 : 31

March, 7, 1915 Continued
P.M.
road has been built and
the stake covered up in
the ice and snow—
and as Todd's notes does
not say @ what var. he
assumed as a meridian
we set the stake @ $8^{\circ}30'$ var.
but only set a temp.
cedar post in snow in
the center of the East
and West Corduroy Road.
We will dig up Todd's
true $\frac{1}{4}$ post and set an
iron in spring.
Gmt for night @ camp.

328 :

32 328

(31)
143-27

Monday March 8, 1915 Continue
for G. J. & Jessell.
A. M.

Carry survey tool to
Bay River and work all
A. M. on writing field
notes.

Dinner with Geo.
Glander .70 pd. by Curo.
P. M.

Catch 3.23 P. M. train
to Bemidji R. R. fare 90¢, 90
= \$1.80, pd. by Curo.

Supper @ Markham
\$1.00 paid by Curo.

Curo and I take 11.05
train to Walker. We get
Room @ Chase Hotel.

328

Donner

①
139-30

clear & warm

33

March 9, 1915

Record No.
500

A.M.

Breakfast @ Chase Hotel.
Curo & I look up field
notes for 139-30 and I
take 9.30 train to Hackensack.
Dinner @ Lake View Hotel.
R.R. fare \$2.60 P.M.

I want to take the
way freight to Backus but
the way freight high ball
Hackensack so I stay @
Hackensack all day and
night. Over night @ Hack.

March 10, 1915

A.M.

Breakfast @ Lake View
I take 10.03 train for Backus
Hotel expenses \$1.00
R.R. fare from Hackensack
to Backus \$2.00.

I call up James Horton
and he comes into town
and takes me & outfit

②

139-30

warm & clear

March 10, 1915 Continue.

A.M.

out to his place.
Dinner with Horton.

P.M.

James Horton & I walk
over to the Meander
corner No. 30 and look
for the old B.T.S. but are
unable to find any. We
walk over to meander
No. 29 and look for the
old B.T.S. but we are
unable to find any. We
look for the old B.T.S. @
meander No. 27 but are
unable to find any. We
walk home. Supper
and over night with Horton.

(3)

34

139-30 clear & warm.

March 11, 1915.

A.M.

Loren Sheppard & Lynn
Clevenger join us.

Starting @ the corner of
Secs. 15-16-21-22 (iron corner
set by Caro) I run $N 89^{\circ} 50' E$.

@ 9+39.4 set Hub.

@ 26+40 we look for the $\frac{1}{4}$
corner bet. Secs. 15-22 but
are unable to find any of the
old B.T.S. so we quit for
dinner in woods.

P.M.

We continue east.

@ 27+44.9 set Hub.

@ 29+50.00 enter heavy J. Pine.

@ 31+51.1 set Hub.

@ 35+74.6 " "

@ 38+50 leave Jack Pine

Quit for the night.

Over night with Horton.

35

(4)

139-30

clear & warm

March 12, 1915 Cont.

A.M.

We continue east

@ 43 + 47.9 set Hub

@ 48 + 65.6 " "

@ 50 + 33.8 " "

Quit for dinner in woods.

P.M.

@ 51 + 50 enter Rainy Lake

@ 64 + 50 leave " "

@ 65 + 20.3 set Hub.

Look for Meander No 25
but are unable to find
anything so we continue
east

@ 67 + 22.8 set Hub

@ 69 + 20.8 " "

@ 70 + 82.5 " "

Quit for the night
Over night with Horton

Working for Cass County

March -

9 10 11 12 13 14 15 16 17 18 19 20

26 120 0 0 0 0 0 0 0 0 0 0 20 186

0 1/2 1 1 1 1 0 1 0 1 1 = 15.0

1 1 1 1 1 1 1 1/2 0 15.0

1 1 1 1 1 1 1 1/2 0 15.0

1 1 1 1 1 1 1 1/2 1 52.5

1 0 0 1 1 1 1 1 1 16.0

1 1 1 1 1 1 1 1 1 92.5

1 1 1 1 1 1 1 1 1 124.61

1 1 1 1 1 1 1 1 1 124.61

1 1 1 1 1 1 1 1 1 124.61

1 1 1 1 1 1 1 1 1 124.61

1 1 1 1 1 1 1 1 1 124.61

1 1 1 1 1 1 1 1 1 124.61

1 1 1 1 1 1 1 1 1 124.61

1 1 1 1 1 1 1 1 1 124.61

1 1 1 1 1 1 1 1 1 124.61

Expenses

2) James Horton

3) Lynn Cloringer

4) Loren Shoppard

1) Frank G. Donner

Horton's Team

Mrs Horton Board of Supervisors

= 4027

39-30

37

139-30

clear

March 13, 1915. Cont. for Cass. Conty.
A.M.

We continue East

@ 72 + 75 enter Portage Lake

@ 90 + 1.2 set Hub on ice

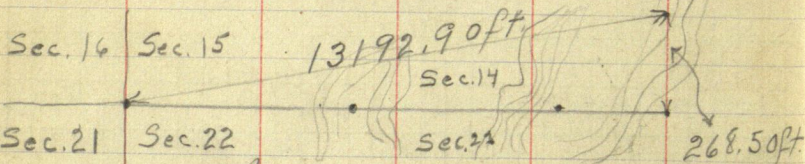
@ 108 + 1.7 " " "

@ 124 + 1.5 " " "

@ 131 + 92.9 the true $\frac{1}{4}$

Corner bet. Secs. 13-24 -

139-30 (iron set by Curo)
sets south 268.50 ft.



Quit for dinner in wood.
P.M.

Starting @ the $\frac{1}{4}$ Corner bet.
Secs. 23-24 - 139-30 (iron set
by Curo) Town North var 9°
@ 2 + 7.3 set Hub

Quit for the night.
Over night with Horton.

(4)

139-30

38

March 14, 1915, Can't for Cass County.
A.M. *snowy*

We continue North.

@ 4 + 83.4 set Hub

@ 6 + 2.5 " "

@ 10 + 25 enter Portage Lake

@ 19 + 24.5 set Hub on ice.

@ 28 + 87.9 intersect East & West random line @ 105 + 17.5 E.

@ 50 + 94.8 set Hub on ice.

@ 63 + 62 " " "

Dinner in woods

P.M.

We continue North

@ 72 + 25 leave Portage Lake.

We look for the Meander corner No 9 where U. S. notes call for veg.

Oak 10 N 55 W 10 = 6.6 ft.

" 12 N 53° 30' E 30 = 19.8 ft.

I find both trees the N.W. standing and plainly marked and the N.E. down but plainly marked. From these two trees I set a 4" x 4" x 36" Aspen

⑦
139-30

March 14, 1915. Continued.

P. M.

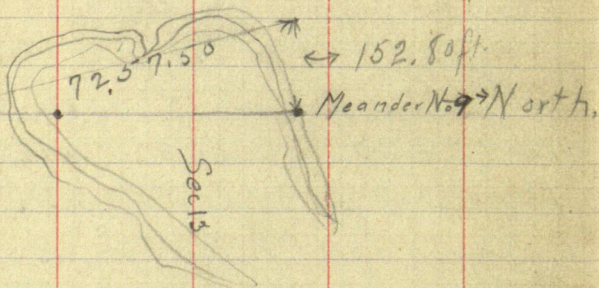
Stub 12" in ground for
the true Meander corner
No. 9 (set by measurement)
from which the old B. T. S.
bear Oak 16 N 63° 45' W 6.6 ft.

Oak 12 N 33° 15' E 19.8 ft.

var 9°

@ 72 + 57.5 the true Meander
corner No 9 sets East 152.8 ft.

Sec. 23
Sec. 24



Quit for night.

Over night with Horton.
I call up Caro @ Walker
and he tells me to
continue work here for
a couple of days

(9)

139-30 warm & clear. ⁴⁰
 March 15, 1915 Cont. for Cass County.
 A.M.

We drive to where the
 Sec. corner of Secs. 22-23-26-27
 -139-30 ought to be and
 after a long hunt I find
 iron corner set by Curo.
 Just for dinner in wood.
 P.M.

Starting from the true Sec.
 corner of 22-23-26-27 I
 run North var. $8^{\circ}30'$

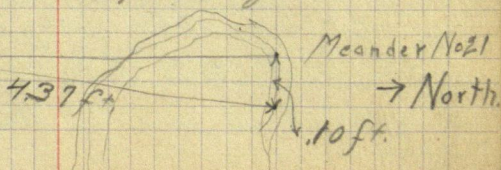
@ 2 enter Fawn Lake
 I look for Meander No 21 where
 U.S. note call for vig.

B.O. 15 N $63^{\circ}30'W$ 60 = 39.60 ft.

I find tree down but plainly
 marked from which I set a
 80' spike for the true Meander
 Corner No. 21.

@ 4+39 the true Meander Cor.
 No 21 set East 10 of a foot.

Sec. Cor. 22-23-26-27



139-30 even 6 char.
March 15, 1915 Continued.

P. M.

Starting from Meander
Corner No. 21 Turn North var. $8^{\circ}30'$
@ 2 ft. leave lake.
@ 1480.6 set Hub
@ 5+3.2 " "

Quit for night
Over night with Horton.

March 16, 1915, Cont for Cass County.
A. M.

We continue north.
@ 11+33.8 set Hub
@ 18+42 cross State road
Hainer in woods.
P. M.

Continue North
@ 18+64.9 set Hub.
@ 22+15.1 " "
I look for Meander Cor.
No 26 where U. S. notes
call for viz.

B. P. 10 S 80° W 19 = 12.54 ft.
N. P. 12 S 8° E 45 = 29.70 ft.

(11)

139-30

warm & clear

March 16, 1915 Continued.

P.M.

I find the S.E. stump
with the B.T. plainly
marked and the roots
of the S.W. from which
I set a 80' spike (by
measurement) for the true
Meander corner No 26
with a new B.T. viz.

N. P. 14 S $66^{\circ}26'W$ 14.85 ft.var $8^{\circ}30'$

@ 23 + 33.4 the true Meander
corner No. 26 sets East 18.6

Meander No 21

Meander No 26

N

2333.40 ft.

18.60 ft.

I look for Meander No. 27 where
U.S. note call for viz.

B.P. 8 N $19^{\circ}W$ 45" " 5 N $21^{\circ}45'E$ 57

but I am unable to find
any of the old B.T.s.

I look for Meander Corner
No. 28 where U.S. note call for

139-30 warm & clear.

March 16, 1915 Continued

P.M.

N.P. 24 S 75° 45' W 34 = 23.27 ft.

I find the N.P. standing and plainly marked from which I set a 80' spike for the true Meander Corner No. 28 with new B. T. S. var.

N.P. 28 S 6° 32' E 34.20 ft.

Apex 3 S 84° 46' W 28.00 ft.

var. 8° 30'

I run North var 8° 30'

@ 6 + 85 leave Rainy Lake.

Quit for the night.

Over night with Horton
Curo call me up from Walker.

(13)

42/

139-30 cloudy & snowy.

March. 17, 1915 Cont. for Cass County.
A.M.

We continue North.

@ 7+31.3 set Hub

@ 9 enter Rainy Lake

@ 11+88.2 intersect E. & W.

random line @ 52 96.60 E.

@ 13+388 set Hub on ice

@ 14 leave Lake Rainy.

@ 15+104 set Hub

@ 22+56.5 " "

Quit for Hinner in woods.
P.M.

@ 24+25 enter lake

@ 34+30 leave ..

@ 37+30.4 set Hub.

@ 39 enter swamp

@ 45+50 enter lake

@ 50+50 leave "

@ 50+91.3 set Hub.

@ 52 leave swamp.

Quit for night.

Over night with Horton.

(19)

139-30

March 18, 1915 Cont. for Cass.
A.M.

We continue North.

@ 56 + 23 set Hub

@ 59 + 83 " "

I look for the Sec. corner
of Secs. 10-11-14-15-139-30
where U.S. note call for.

B. P. N 67° E 33 = 21.70 ft

" " N 37° W 9 = 5.94 "

" " 65 $48^{\circ}30'$ W 29 = 19.14 ft.

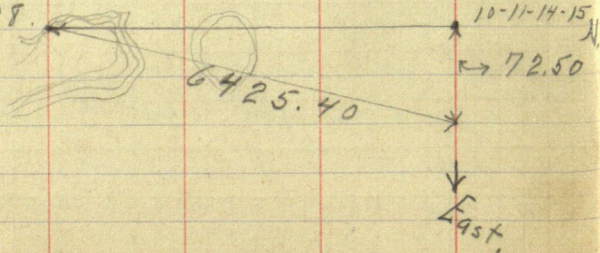
" " 85 66° E 30 = 19.80 ft.

We find the N.W. & S.W. B.P.s
standing and plainly marked.
the N.E. tree is down but
plainly marked from these
tree I set a 80' spike for
the true Sec. corner.

@ 64 + 25.4 the true Sec. Cor.
of Secs. 10-11-14-15 set E 72.5 ft.

Meander No 28.

South ←



Wednesday

May 26 1915

Leave Walker on 9:20 Train for Backus
J. Horton's Team takes me to his farm
Have dinner and leave for Sec 14-139-30
which is $3\frac{1}{2}$ mi North

I locate M.C. No 9 on North Bk of
Portage Lake set by Frank Donner
Mar. 15, 1915

I search for N.E. cor. to Sec 14-139-30
where U.S. Notes call for:

$$W.P. 24 N 80^{\circ} E 56 = 36.96$$

$$NP 24 N 31 W 36 = 23.76$$

$$NP 10 S 22 W 88 = 58.08$$

Tuesday

May 27, 1915

I have only on man, Greenberg.

Starting from M.C. No 9 on N Bk
of Portage Lake Sec 14-139-30 run
transit line North. Var. $9^{\circ}30'$

@ 502.50

Hub

@ 700.00 find stump of old Bt
which I use in finding two more Bt.

U.S. Notes call for:

WP 24 N 80° E 56 = 36.96NP 24 N 31° W 36 = 23.76

NP 10 S 22 W 88 = 58.08

I find two stumps and one tree
plainly marked, from which I set
cor to sec's 11-12-13-14 Bts. ok,
as to measurement.

continue random line

@ 722 cor. just established sets

10.9 ft. E

Hub @ 502.5 goes E 7.58 ft.

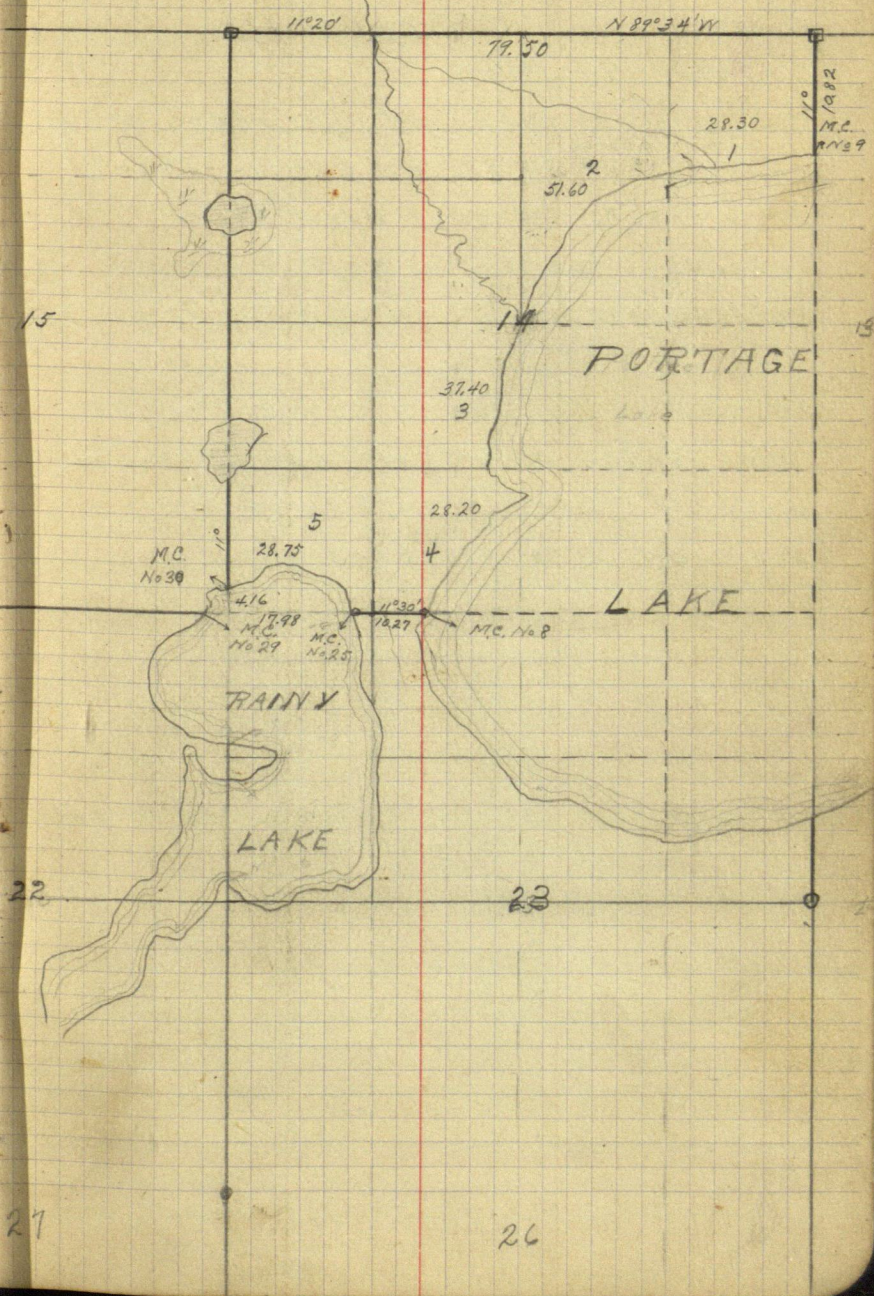
" @ 722 " E 10.9 ft.

to True sec. cor. 11-12-13-14-139-30

(21)

52

PLAT of SEC. 14-139-30



Friday

May, 28, 1915

I leave for sec.

to see Guro and get Donners notes
of the work he did on sec. 14-139-30
in March which I have to use to
continue survey. Also to see about
getting Axmen.

See Curo at see Where
he and party are in camp. Work on
notes notes most a?? day. Ride
back to Backus with Curo and
walk out to Greenbergs place

Time Sheet on Sec. 14 Twp 139 - R9 30

May

Gorman, N.D.

Greenberg, H. 5

Greenberg, E.

(Lough, L.)

(See Note)

25
26
27
28
29
30
31

1 1 1 1 1 1 1

1 1 1 1 1 1 1

1 1 1 1 1 1 1

1 1 1 1 1 1 1

1 1 1 1 1 1 1

1 1 1 1 1 1 1

1 1 1 1 1 1 1

1 1 1 1 1 1 1

should have shaped 415?

(note) This should be
Lewis Prescott
and send bill in care of
Earl Greenberg, Backids

25

Expenses of Surveyor Gorman on sec 14-139-30

May

Gorman & Greenbergs

25

26

27

28

29

30

31

1

2

3

111 111 111 111 111 111 111

111 111 111 111 111 111 111

111 111 111 111 111 111 111

111 111 111 111 111 111 111

111 111 111 111 111 111 111

paid Greenberg

Saturday

May, 29, 1915

German Transit.

Greenberg Charn

starting at M.C. No 29 on Donners random
line running E & W I search for M.C.

No 29 where U.S. notes call for:

Asp. 10 N 81 W 150 = 99.7 ft

Find no trace of old Bt.

On E Bk of Rainy Lake, M.C. No 25
where U.S. notes call for:

HP 20 N 42 1/2 E 18 = 11.88

HP 9 South 12 = 7.92

I find a in stump with Bt. plainly
marked from which I establish

True M.C. No 25

setting Transit at M.C. No 25 I start
random line E.

@ 73 Hub

@ 271.1 "

@ 385.9 "

@ 485.0 Enter Portage.

can find no Bts for M.C. No 8

At 6497.15, on Donners random line, True
M.C. No 25 established by German lines 108.0 ft.
South.

14-139-30

(25)

Saturday (cont) May, 29, 1915.

Correcting Back on Danners work

From cor. 15-16-21-22 to M.C. No. 25 on

E Blk of Parry Lake

At 6497.15 M.C. No 25 lies S. 108 ft.

Correction = .0166226

At 5100.0 M.C. No 29 goes S 84.77

At 5033.8 Hub goes S 83.66

At 4865.6 " " S 70.88

Sunday May, 30, 1915

All day at Greenbergs

E
2625 M. set
24 cor
400
46

13
14 23 24 Lake
Portage

15 14 23 22 Parry Lake
16 15 21 22

Monday May, 31, 1915

Gorman Transit

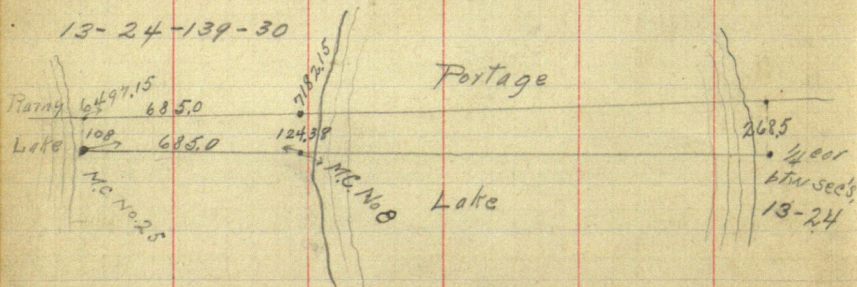
E. Greenberg Chain

H Greenberg Ax

L Vaughn Ax

Start Vaughn and E Greenberg cutting line
on N line of set 14 Var $9^{\circ}20'$ H Greenberg and I go to S line of sec. 14
to establish M.C. No 8At 7182.15 on Donners Random line
I turn right angle and chain 124.15 ft
S. At this pt I drive basswood stake
for True M.C. No 8.Correction for M.C. No 8 and Donners
random line on S line of sec. 14. [023925]
At 6497.15 M.C. No. 25 sets S 108 ft.From 6497.15 on Donners random I chain E 685.0
to 7182.15 turn right L and set M.C. No 8 124.38
S on True line from M.C. No 25 to 4 cor b/w sec's.

13-24-139-30



Monday (cont'd) May, 31, 1915

P. M. Beginning at cor. to secs. 11-12-13-14 run transit line and chain W Var. 90°30'

152.5 Hub

546.0 "

650.0 enter swamp

970 Lv swamp

1092.5 Hub

1200.0 "

1310. enter swamp

1740. Lv. "

1832. Hub

2200.85

Tuesday June, 1, 1915

Same crew

Var. changes to 100°30'

continue transit line and chain

2387.85 Hub

2450 enter swamp

2640 I look for BT. to 1/4 cor btw secs

14-11-139-30. V.S. notes call for:

NP10 N 50°W 123. As 1/4 cor comes in

Tuesday (cont'd) June, 1, 1915,
a Spruce swamp it is improbable
that the N. P. Bt. can be found
continue random W

2800 Lv Swamp

3053.1 Hub

3899.0 enter Brook

3899.0 Lv "

4005.8 Hub

4130.5 "

4300.0 enter swamp

4925.0 Lv Swamp

5158.8 Hub

5233.4 cor to sec's 10-11-14-15 sets N 1582

Wednesday

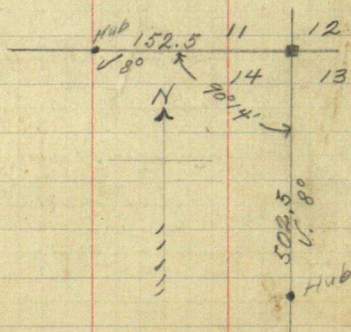
cont'd

June 2 1915

7387.85	goes N	81.58
7700.85	" N	66.96
1832.0	" N	55.72
1300.45	" N	19.55
1200.0	" N	36.50
1092.5	" N	33.21
546.0	" N	16.50
152.5	" N	4.63

The correction above has been used only to get \angle at NW cor of sec. 14. Shown in Fig. on preceding page.

$90^{\circ}14' = \angle$ at cor to sec's. 11-12-13-14
 Setting transit on cor sec's 11-12-13-14
 sight on true N & S line. Turn \angle to
 true E & W line $\angle = 90^{\circ}14'$



Thursday June 3 1915

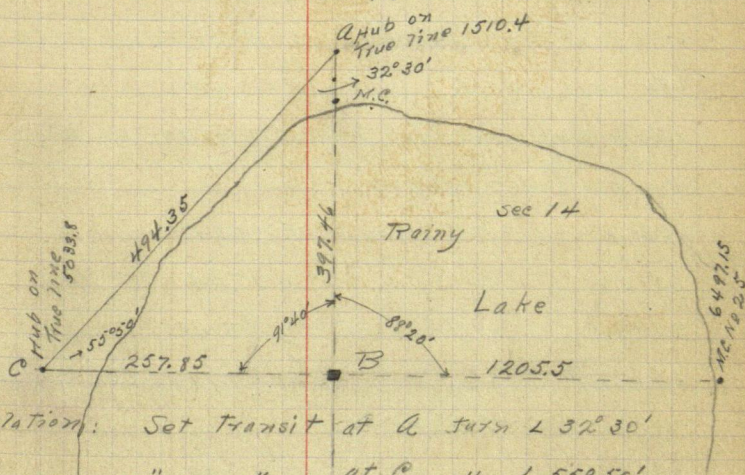
Correcting Back on Denvers Random line
running N & S b/w Seds 14-15 Beginning at
M.C. No 28

Correction [011283]

731.3 goes E 8.75

1510.4 " E 17.04

At the intersection of N & S and E & W True
Lines = True cor. to sed's -14-15-22-23.



Triangulation: Set Transit at A turn $\angle 32^\circ 30'$
" " at C " $\angle 55^\circ 50'$
Chain distance AC = 494.35

$$55^\circ 50' + 32^\circ 30' = 88^\circ 20'$$

$$180^\circ - 88^\circ 20' = 91^\circ 40' = \angle \text{at } B$$

$$\sin B: \sin C :: AC: AB$$

$$\sin 91^\circ 40' = 1.0291$$

$$\sin 55^\circ 50' = .82741$$

Thursday (cont'd) June 3, 1915

$$1.0291 : 82741 :: 494.35 : AB$$

$$82741 \times 494.35 = 409.032$$

$$\frac{409.032}{1.0291} = 397.46 = \text{True AB}$$

$$\text{In } \text{S} 50^{\circ} 50' : \text{S} 72^{\circ} 30' :: 397.46 : CB$$

$$CB = 257.85$$

Friday June 4 1915

Correcting Donner's N & S random line
btw sec's 14-15.

Whole line 6425.4 Missed cor. 72.5 To W

Correction .011283

731.3 goes E 8.25

1510.4 " " 17.04

2258.5 " " 25.48

2441.06 " " 27.77 To S $\frac{1}{4}$ cor.

btw sec 14-15

3730.4 goes E 42.09

3769.17 " E 42.43 To $\frac{1}{4}$ cor

btw sec 14-15

5091.3 " E 57.44

5097.29 " E 57.51 To N $\frac{1}{4}$ cor.

btw sec. 14-15

14-139-30

33

64

Friday (cont'd) June, 4, 1915

5623 goes E 63.44
 5983 " E 67.51
 6425.4 " E 72.5 To true
 cor to sec 10-11-14-15-139-30

I go to $\frac{1}{4}$ cor. btm sec's 11-14 and discover
 U.S. Bt. Vig. N.P. 10 N 50W 123. I establish
 cor. and destroy cor. I set by measurement.
 At 2600.9 on random true cor sets N
 76.25 ft.

Correcting Back E

2600.9	goes	N	76.25 to $\frac{1}{4}$ cor.
2200.85	"	N	64.52
1832.0	"	N	53.58
1300.45	"	N	38.08
1200.0	"	N	35.18
1092.5	"	N	32.05
546.0	"	N	16.0
152.5	"	N	4.66

14-139-30

Saturday June 5 1915

Gorman Transit.

Vaughn & E. Greenburg Ax

H. Greenburg. chain

Starting at $\frac{1}{4}$ cor. btr sec's 11-14. Run. W Var. 8°

180 Lr Swamp

207.1 Hub

832.15 "

1332.5 cross creek

1338.5 Hub

1560.1 "

2560.5 "

2636.5 cor. to sec's 10-11-14-15

Res at 6.75 ft.

correcting Back. [.02522]

(Should be .002560)

2686.5

2560.5

 126.0

 1560.1
 1318.5

 1318.5
 24.5

 1343.0

 1560.1
 1318.5

 241.6

Monday, June 21, 1915

At 7.30 A.M. Curo & F.N. Molyneux
took auto run out to N.E. corner of Sec. 28
Twp. 142, Rg. 31, about $\frac{3}{4}$ mile from Walker, looked
up witness trees, set temporary stake for
corner, and run temporary line south to
highway with compass.

Curo at instrument, Molyneux assistant.

Day cloudy, threatening rain.

Returned to town.

F.N. Molyneux

Monday, June 21, 1915.

John W. Curo & F. N. Molyneux, took the 9-26 train south from Walker to Hackensack

County commissioner met us there with an auto, and we drove to Web Lake for H. F. Baldwin and helper. Found that they are on line with their lunch along, and being unable to see them Mr Curo gets some one to go out and hunt them up and arranges with the Co. Com. to take them to Portage Lake to night or in the morning.

We then drove to Backus for dinner. 12-45. After dinner we drove to the N. W. corner of Sec 3, Twp 138, Rg. 31, where we put in two witness corners, on E. & S. sides of the lake, to the Sec corner. Mr Curo has the notes of these.

Com. Kroke got his auto stuck in turning around. Got it out. Started for Backus, after going a mile found that we had left the chain. Went back after it. Again on our way to Backus. When we arrived just in time for Curo to take the 4-06 N. bound train

F. N. Molyneux

to Walker. Train 15 minutes late.

Loaded 9 of the I.M.s. in the car and proceeded to camp on Portage Lake where we arrived at 5 P.M. Heavy rain storm while on our way to camp. Corn. Kroke returns home.

The young man arranged with to bring Baldwin & helper drove to our camp at Portage Lake instead of to Webb Lake.

Boys at camp, Roy Bryant, Harold Curo, doing nothing. Charley Rice doing the cooking and fixing up around cook tent.

Day fair till 4-30 P.M. Heavy shower.

Worked on Donner & Gorman notes of Sec. 14 till late getting line up for tomorrows work.

E. M. Holmneux

14-139-30

Tuesday, June 22, 1915

Breakfast 6, A.M.

F.N. Molyneux, Inst

Roy Bryant, Axe

Harold Curro, Axe

We left camp at 6-45 taking with us instrument, chain brushhook, axe and two I.M.s, we walked to M.C. corner No 9 on east side of Sec. 14, at north side of Portage Lake, where we found a wooden stake marking the corner. We checked the distances and bearing on the Witness trees and found the same correct as shown by Gormans notes on page 51.

From here we check chain his measurement north to the section corner of Secs. $\frac{11}{14} \frac{12}{13}$ and find same to be 722 feet as shown by his notes. See page 51. We checked stake set for Sec. corner by him, and find same to check for distances, but are slightly off as to bearing. See Gormans notes for same page 51.

From here we walk west to the $\frac{1}{4}$ Sec. Cor. between sections $\frac{11}{14}$ to tie same to random line run west from corner of sections $\frac{11}{14} \frac{12}{13}$ as his notes do not show a tie, and to brush and hub a line to the south. We found the 6"x6"x5' tamarac post set some time ago for this

F.N. Molyneux

1/4 Sec. Cor, and check it for distance on the U.S. B.T. which is now a stump but showing plainly the B.T. The U.S. Gov. notes calls for a

N.P. 10°, N. 50° W. 123 - Checks for distance and bearing.

I set the instrument over this corner and with a back site to the west on a hub of the random run from this point, I turned 90° 04' to the left, and brushed and hubbed a line to the south about 2000 feet Before noon. In trying to tie this line to the random line from the corner of sections $\begin{array}{c|c} 11 & 12 \\ 14 & 13 \end{array}$ found an error of 3.2 feet in chaining so decide to check chain Germans random line after noon.

Quit for dinner. Fine forenoon.

Found H. F. Baldwin, Howard Snoborg in camp, they having arrived about 9-30 A.M., brought over by young Krake, from Webb Lake

P.M.

F. N. Molyneux & Harold Cura, go to north side of section 14 to check chain random line run west from the corner of sections $\begin{array}{c|c} 11 & 12 \\ 14 & 13 \end{array}$ and found an additional error of 24.5 ft making a total error of 27.7 feet between the Sec. Cor and the 1/4 Sec. Cor. We making the distance 2630.4

F. N. Molyneux

feet against Gormans 2602.7 I. rechaind this $\frac{1}{2}$ mile as a check on our own chaining. I find that at 2630.4 feet west of the Sec. Cor. of $\frac{11}{14} \frac{12}{13}$ the $\frac{1}{4}$ Sec. Cor. sets N. 762 feet. of ~~then~~ at the random line

Then at 1315.2 feet west of the corner of sections $\frac{11}{14} \frac{12}{13}$ and 38.1 feet north of the random line I set a stake for the $\frac{1}{16}$ section corner. From this $\frac{1}{16}$ corner I start a brush and hub line to the south making an angle of $88^{\circ} 12'$ to the S.W. with the random line from the N.E. corner of Sec. 14.

H. F. Baldwin, Roy Bryant & Howard Smenberg, after brushing and hubbing the $\frac{1}{4}$ Sec. Line south $\frac{1}{2}$ mile from $\frac{1}{4}$ corner. come and assist us on this the E. $\frac{1}{16}$ line. and at

2+31.8 set a hub.

6+01.9 " " "

6+50 enter bottom along creek.

9+70 " river.

10+30 Leave .

11+50 " bottom

J. M. Molyneux

- 11+66.8 set a hub.
 12+30 road around lake.
 12+70.0 set a hub.
 12+75 enter marsh around lake.
 13+86 edge of water.

On this line we follow south along an old but well blazed line.

Quit for the day.

Day fine,

After supper while Molyneux & Baldwin were working on notes. Horton's team arrived with supplies and 16 I.M. and a message for Molyneux to return with the team and take the night train to Walker and bring note book. R.R. fare to Walker from Backus 19¢

M. Molyneux

14-139-30

Wednesday, June 23, 1915

Molyneux at Walker working on maps

Camp at Portage Lake.

Breakfast at 6 A.M., Raining at 6-30
 Left camp for work on line at 7-30. At
 8 A.M. it commences to rain again and
 crew comes into camp. Light showers
 and threatening rain all forenoon

H. F. Baldwin, Instrument

Ray Bryant, Axe

Rogald Guro,

Howard Syahberg,

P.M.

} On time.

Above crew left camp at 1-00 o'clock for
 N. $\frac{1}{16}$ corner between Secs. $\frac{11}{14}$, Front hub
 at 1338.5 on rand line, run by Gorman, west
 from true $\frac{1}{4}$ corner between Sec. $\frac{11}{14}$ and
 measured east 20.25 feet to a point which
 from which we measured N. 3.37 feet to a
 point which is the true West $\frac{1}{16}$ corner
 between Sec. 11 & 14, this point falls in the
 creek and we drove an $2\frac{1}{4}'' \times 4'$ galvanized pipe
 well in the ground for this corner.

From the hub set at station 1318.25. I set
 transit over this hub, and with sight to east
 on point previously set, I turned angle of
 E. M. Molyneux

of 90° to R, for random W. $\frac{1}{16}$ line
running S. at

117.6 intersect the random line, cut by Gormay
West from the corner of Secs. $\frac{11, 12}{14, 13}$ N E

The Hq to S.W. is $88^\circ 17' 30''$

$88^\circ 17' 30''$

355. Set hub

400. Quit work and went to camp
raining hard, crew soaked

W

Charley Rice distributing 1, M.S. S
 $2\frac{1}{4}'' \times 4'$ with caps, for Sec. corners

Thursday, June 24, 1915.

Molynaux, leaves Walker at 9:26 on
train for Backus. At Backus he
gets a new brush hook and gets an
old one fixed for which he pays 15¢
Hortons auto takes him to camp at
Portage Lake where he arrives at
11-15, Roy Bryant returns with auto
to Backus.

H. F. Baldwin, Instrument

Harold Curo

Axe

Howard Swenberg "

} Continue the

West $\frac{1}{16}$ line south through Sec 14 and at

746.2 Set a hub.

J. M. Molynaux

14-39-130

9+86.7 Set a hub. = Small stream -

1100 leave tamarac swamp. Entire line to here has been through swamp

1120.4 Set hub. On slight raise of ground swamp 150' to west.

1275.8 Set hub

1416.4 " " Enter same T. swamp

1625 Leave swamp

Above line cut and hubbed but chained by Molyneux and Harold Curo after dinner. Rice working around camp.
P.M.

Molyneux joins party on line and contin same south. Charley Rice also assists in cutting brush on line, and at

2460.9 set hub

3062.2 " "

3200

Quit chaining, but brushed and hubbed line south to road. Quit for the day.
Splendid day.

Roy Bryant did not work this A.M. on account of getting his clothes wet yesterday.
D. Molyneux

Time sheet for Sec. 14-139-30 - Subdivision															North
JUNE	F 18	S 19	S 20	M. 21	T. 22	W. 23	T. 24	F. 25	S. 26	S. 27	M. 28	T. 29	W. 30	July	
F.N. Molyneux	⑧	1	1	1	1	1	1	1	1	1	1	1	1	1	8 70
Roy Bryant	⑨	1	0	1	1	1	0	0	0	0	0	0	0	0	8 8
Harold J. Curo	1	0	1	1	1	1	1	1	1	0	1	1	1	1	24
Charley Rice	1	1	1	1	1	1	1	1	1	1	1	1	1	1	16
H. F. Baldwin	—	—	—	—	1	1	1	1	1	1	1	1	1	1	55
Howard Swanberg	—	—	—	—	1	1	1	1	1	0	1	1	1	1	20
H. E. Greenberg	—	—	—	—	1	1	1	1	1	0	1	1	1	1	12
Jim Horton	Team 2														
Com. Krake	Auto														
Team Photo															Auto
Baldwins															Auto
Portage Lake															Auto
Rain 5 P.M.															Auto
Showers After. 9-30 A.M.															Auto
Fine all day															Auto
Showers all day															Auto
Fine day															Auto
Fine day															Auto
Showers.															Auto

14-139-30
Friday, June 25, 1915

Breakfast at 6 A.M.

Fine morning, no dew.

Molyneux & Harold J. Curo, mend tape
and go to 3200 of W. 1/4 line through
Sec. 14-139-30 and continue
chaining at

3619.7 Hub

3880.0 "

4354.5 "

4412 Road

4580 " Quit it chaining and went to
south side of Sec. 14 to check up Donner
and Gorman

Cont on
page 81

Baldwin, instrument

Howard Spanberg, Asst.

H. E. Greenberg, Exc.

Charley Rice

brushed and hubbed some S. across Gorman's
line

Two crews working together.

We check up M.C. #25 and find same properly
set, but being 108.4 ft S. of Sta 6493.8 of
Molyneux.

Donners line, at rt. angle and not as shown on preceding notes.

Commences to rain. We go

to cottage on north end of Rainy Lake. Find cottage locked. Go to two hole privy (new) take possession and write up notes.

Quit raining at 12 Noon.

P. M.

Re-chain Donners line East from hub at 65+20.3

67+21.9 = Donner 6722.3

70+80.3 = " 7082.5

At 67+21.9 a hub on Donners random line

I turn 90° and at 112.1 feet, set a hub which point is on the true Sec. line for the south side of Sec. 19 as produced from the true Sec. of Secs 15, 14, 22, 23 through M.C. #25

From this last hub set, Baldwin takes the transit to a point about 200 ft west and ranges in between the hub and the M.C. No. 25.

Commencing at M.C. #25, H. Guro & Molyneux chain east as follows, White

Baldwin & Swanberg produce the line

0+00 = M.C. #25 East side Rainy Lake
82.5 A hub.

1+39.9 " " Int. with Random 1/4 line

2+28.4 " "

3+37.8 " "

5+53.8 " "

6+77.8 " " for M.C. No 8 on Portage Lake
Rice & Swanberg come from the other line soon after we commenced.

E. M. Molyneux

14-139-30

We now return to the N. $\frac{1}{4}$ line, and
continue along the same south, and at
52+20 Crossed the road.

53+05.3 Intersected the true Sec line on the
south side of Sec. 14, at a point 139.9
E. of M.C. #25 or at 66+60.2 of Donners line
which is 1332.7 ft West of Sec. Cor.
Should be.

(N.W. Quad 9039)

The N. $\frac{1}{4}$ line comes at 13+26.33

" E + N. $\frac{1}{4}$ line " " 26+52.65

1326.92 " S. $\frac{1}{4}$ " " 39+78.98

We now go to Sta 39+78.98 and
where we set a hub, and set up the
transit over it and with a sight
to the south, turned an angle
of $89^{\circ}58\frac{1}{2}'$ to the L. and brushed out
the S. $\frac{1}{4}$ line to the west coming to a
small lak in which this line intersects
with the random line on west side of
Sec. 14, we then returned and brushed
this same line east to Portage Lake.

6 P.M. quit for the day
Baldwin at instrument.

Fine afternoon.

J. N. Wolynetz

SATURDAY, JUNE 26, 1915

Morning fair but threatening rain.

Molyneux and Harold J. Carr go to the intersection of the $N. \frac{1}{2}$ & $S. \frac{1}{2}$ lines of Sec. 14-139-30 and measured west as follows:

1+36.1 set a hub

3+14.8 " " "

7+64.0 " " "

7+86.0 " " " for a M.C. at highwater line of
8+30 Edge of water
" lake.

From here we returned to the point of intersection and chain east to Portage Lake as follows

3+65 cross road

3+71.7 set a hub

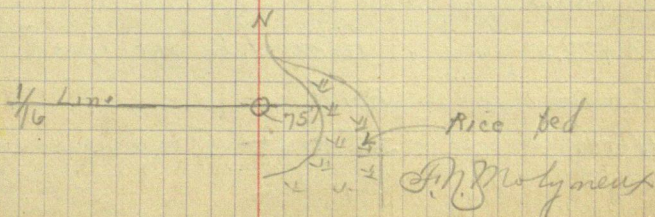
7+75.5 " " "

10+17.3 " "

10+98.5 " "

11+85.3 " " for M.C. on 1st Reef

12+75 Outer Reef

We now go to E. & $N. \frac{1}{4}$ line

After Breakfast

Baldwin at transit

Howard Swanberg flag

H.E. Greenberg Axe } Go to Sta 26+58.65

Charley Rice " }

on the West $\frac{1}{16}$ line and set a hub
over which he set the transit and with a back
sight to the north turning an angle of $89^{\circ} 58\frac{1}{2}''$
to left started brushing and hubbing to west
Molynex & H. Curo arrive about 9 A.M. and chain
and set.

5+18.4 a hub.

5+93.6 " "

11+53.5 " "

13+69.1 " " Intersect Donner's line at 37+68.9

Ang. N.E. Quad is $90^{\circ} 34'$

Now return to the intersection of this
line with the $\frac{1}{16}$ and run the line east
and set.

1+71.6 a hub

5+35.4 " "

13+00.5 " "

13+22.5 " " intersect $\frac{1}{4}$ Sec. line N.W. Ang $89^{\circ} 51'$

13+86 Road

16+00 35' R to Thompsons Log cottage

N.W. $89^{\circ} 51'$

J.M. Molynex

17+60.5 a hub on bluff by Camp Portage Lake
 18+05.0 " " 1.M. for M.C. on edge of bank
 18+27 edge of water.

Quit for dinner

We then went to Stg. 13+26.33 on the west $\frac{1}{16}$ line at which point we set the transit over, and with a sight to the south turned an angle of $90^{\circ} 1\frac{1}{2}$ to the right and run west on the N. $\frac{1}{16}$ line through Sec. 14-139-30 and at

14+00 Enter Tamarac swamp.

6+48.2 a hub., leave T. swamp

8+00 enter " " same

10+25 Small stream flowing north

11+64.6 a hub., lake 20' left

13+75.6 intersect Denvers line at 50+96.8

Lake 50' L

This line runs through a soft tamarac swamp

Quit for the day. Shower.

Windy day

Greenberg takes axes and brush hooks home with him to sharpen

Sh. G. G. G. G. G.

14-139-30

SUNDAY, JUNE 27, 1915

A very severe rain and thunder storm last night. Shook up the cook tent considerable.

Morning, threatening rain.

Molyneux and Baldwin, work on mosquito tents and fix up camp, result of wind and rain.

Boys H.M. & P.M.

P. M

Molyneux & Baldwin take I.M. and tools and go to corner of Secs. $\frac{10}{15} \frac{11}{14}$ where they check up. Donner on location of corner and find same correct. We drive the I.M. down over the 80' nail, set by Donner, 36 inches in the ground and dig pits, N, W, S. & E 30" sq, 10" deep and 6" from corner, and pile the dirt around the I.M. for a mound.

We now go to the $\frac{1}{4}$ corner between Secs 11 $\frac{3}{4}$ 14 and measure south the quarter line previously cut and hubbed. and at 76.2 intersect with random line run west from corner of secs. $\frac{11}{14} \frac{12}{13}$

3+30 leave tamrac swamp.

4+20.8 a hub

5+50 enter swamp

E. M. Molyneux

6+09.6 a hub
 6+27 enter creek
 6+60 leave
 7+90 " swamp
 8+88.5 a hub
 10+63.8 " "
 11+74.9 " "
 11+80 enter swamp
 13+50 leave
 14+58 a hub
 16+06 " "
 17+37.1 " "
 19+79.4 " "
 24+96.0 " "
 26+51.9 intersect E. & W. $\frac{1}{4}$ line

6-10 P.M. Quiet.

Very fair day

D. M. Hylleberg

14-139-30

MONDAY JUNE 28, 1915

Another severe wind and rain storm last night. Breakfast late 7-30

Greenberg arrives before we have our breakfast with axes and brushhooks well sharpened.

Molyneux remains at camp A.M. to check up notes and figure corrections.

Baldwin at instrument,

Harold Curo, flagman

Howard Swanborg, axeman

H. Greenberg

Go to 1326.33 on

west $\frac{1}{16}$ line and run east on line previously projected to the west end at

118.3 a hub.

238.4 " "

280 enter swamp. Tamrac.

383.4 " "

860.4 " "

1319.6 " " intersect N. & S. $\frac{1}{4}$ line.

at 1326.2

S.W. Quad. $90^{\circ} 12'$

Checked By Baldwin and H. Curo the chaining of the S. $\frac{1}{2}$ of the W. $\frac{1}{4}$ Sec. Line Same OK.

Charley Rice building mounds and digging witness pits.

J. N. Molyneux

Meander Lines

Commencing at M.C. #8 (Gov) With transit setting over same, and siting to hub on true line to west and turning to the right $101^{\circ} 10'$ for the 1st course

- 0+00 = M.C. #8 Water 80' E, rice bed 200' wide.
 2 Reef 10' R, water marsh 60', 200 Rice bed
 8+02.0 a hub Def R. $21^{\circ} 50'$ Water 75' R, 250' " "
 3+60 90° over reef on to soft ground
 4 Reef 10' L, water 20' R, 900' " "
 6 " 10' L, " marsh water 30' R. 350' " "
 7+88.8 a hub
 8 on reef, marsh 20' R. 30' wide, 200' " "
 9 " 15' R.
 9+99.4 a hub Def L. $7^{\circ} 10'$
 10 on reef 130' R. water 200' " "
 12 reef 10' L, edge of marsh to 30' R. " " $104^{\circ} 12' \rightarrow$
 13+21.5 a hub Def R. $5^{\circ} 13'$ on reef
 14 reef 15' R. water marsh 20' to 70' 200' Rice bed
 14+85.6 M.C. on S. $1/16$ Line Def. $15^{\circ} 49'$ * M.C. $60^{\circ} 08'$
 Point runs int lake, Rice bed 100'
 16 Edge of Lake 25' R. End of rice bed.
 17 10' R.
 18+00 a hub, Def $7^{\circ} 40'$ R, reef 12' R, water 16' R
 " " 20 " " 25 "
 20 +50 on " 4'.
 21+99 a hub, Def $7^{\circ} 20'$ R.
 22 Out for day. reef 15' R, " 20' R

Cura & wife + babe + Mr Woods and wife at camp, stayed for supper. Took Harold and Gerald to town with him. Molyneux helps brush on M.C. lines P.M. Fine day.

J. Molyneux

14-139-30.

TUESDAY, JUNE, 29, 1915

Fine morning

Harold J. Curo returns from Backus with
new outfit of clothes.

Molynex, axe & Etc

Baldwin, instrument

H. Greenberg, axe

Howard Swamberg (flag) finish brushing
and hubbing meander line of Sec 14, on Portage
lake. Chaining as follows by Molynex and
Harold J. Curo

Wednesday June 30, 1915

22 + 50

on reef, water 6' R.

24

" " " 3' R

26

" " " 10' R

26 + 33.4 Def $6^{\circ} 50' R$, on bank

" 8' R, " 15' R

27

" cut "

" 20' R, " 29' R

" 20' " " 29' R

28 + 14.6 ahub, Def $5^{\circ} 27' L$, to M.C.29 + 60.8 M.C. on E + W, $\frac{1}{4}$ line, on cut bank

N M.C. E

S. N. Ang $59^{\circ} 21'$ Def $1^{\circ} 0' R$

30

reef 8' R, water 10' R

31

" " " " "

31 + 37.4 hub, Def $10^{\circ} 22' L$

on " " 4'

33

on shore " 10' R " 12'

34

" " 12' " 14'

W. Molynex

35+00 cut bank 10' L, Reef 50' R, Water 55' R.
 36 on " " no " " 55' R.
 37 " " small " 20' R " 22' R.
 37+50 enter marsh
 38 cut bank 15' L, reef (small) 30' R " 35' R.
 39 " " 30' L, no " 30
 +50 Leave marsh
 40 on cut bank

40+12.5 a hub, on bank, Def $23^{\circ} 50' R$ to M.C. on E. $\frac{1}{16}$ S. L.

41 cut bank 8' L, Marsh 8' R, open water 30' R.

41+40 Boat landing 20' R, Shacks 150' L.

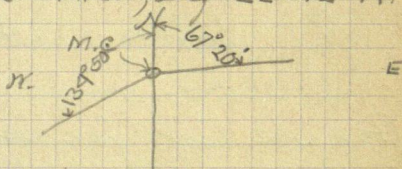
42 Reef 25' L, Marsh 6' L, water 15' R.

43 leave marsh

44 on reef, marsh 20' R. " 40' R Road 50' L

45 " " " 20' R " 80' ")

46+04.8 = 12+70.0 on E $\frac{1}{16}$ line = M.C. Def $22^{\circ} 12' R$.



47 on reef, marsh 15' R

Water 120' R.

Bag of rice bed.

48 reef 45' R marsh 60' R Lake 200' R S R. bed 100' wide

49 " 30' R, " 50' R " 150' R. mouth of creek, R. B. 200' "

Bridge 80' Left

49+20 enter creek

49+50 leave "

50 reef 20' L + 150' R. marsh between, rice bed 300' wide

+40 cross reef from L.

51 Two reefs from 25' R.

+29 a hub on reef, Def $19^{\circ} 53' L$, tack in birch stump

52 foot of reef (10' L) small reef 80' R - Marsh 40' wide, rice bed 200' W

+70 edge of rice bed

53 marsh 110' L, reef 25' L. Rice bed 10' R - 200' wide

54 Leave " + rice bed (r. b. 200' wide) reef 10' L

55 on bank, reef 20' R, to rice bed, 150' wide

55+19.9 a hub on bank, Def. $33^{\circ} 50' R$ to M.C. on Sec. Line

56 reef 25' R, rice B. 30' R, 150' wide

57 edge of rice B, Reef 30' L.

58 on reef, marsh 8' R, rice bed 60' R, 100' wide

59 " " " 15' " 100' " "

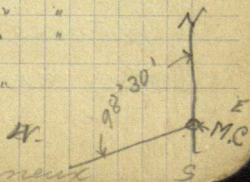
60 " " " 25' " 180' " "

60 + 70.8 I.M. for M.C. #9,
 30' R, a marsh 50' R rice bed 200' "

N.W. Ang. meander line to

true N+S section line $98^{\circ} 30'$

DR. D. H. H. H. H. H.



Charley Rice, Molyneux and Greenberg
set I.M. $2'4" \times 4'$ with cap drove $36'$ in the
ground for the following corners.

Gov. M.C. #9 North side of Portage Lake, one U.S.
B.T. still standing. We dug pit.
 $30''$ sq. & $12''$ deep, $6'$ to north of this
for witness pit and piled the dirt
around the corner for a mound.
This corner marks the true line
between Secs. 13 & 14.

Gov. Sec. Cor for Secs $\frac{11}{14} \mid \frac{12}{13}$ drove the
I.M. $36''$ in ground and dug four
pits to N, N, S, & E $30''$ sq $10''$ deep
and at $6'$ distance for witness pits
piling the dirt around the corner for a
mound. These are in addition to Gov.
B.T.s. still standing.

E. 1/4 Cor. N. side section 14.

Place I.M. in place of stake formerly
set and drive same $36''$ in ground and
pits to E. & S. $30''$ sq $12''$ deep for
witness pits and pile the dirt around
the corner. Did not dig pit to west of

L.M. Molyneux

corner as same would fall in swamp.

M.C. on E. 1/4 line. Sec. 14.

At a point 1268.3 feet south of the last described corner and at a point 3.6 feet east of a hub previously set on a random line we drove the I.M. 30" in the ground and dug a pit 30" sq and 12" deep, ^{6' to North of corner} piling the dirt around the corner, as witness to same.

Gov. M.C. #25, east side Rainy Lake, section Line between Secs 14 & 23. Finished pit 6' to east of corner, 30" sq 15" deep, piling dirt around cor as additional witness to U.S. Gov. B.T. remaining

Go to west side Sec. 14, north of Rainy Lake and at Sta 1510.4 Donner's random line with site to south turn 90° L and set a hub a 17.04 feet distance which is the correct to the true line at this point, Setting transit over this hub, and using for a flag, a stick set to the south by German on the ^{line} true, at Sta 7+31.3 we then set a stake at Sta. 1435 for M.C. #30 north shore of Rainy Lake, 1400 being the water line, We then projected the true line north and at 1689.9 set a hub
1870 cross road.
19+75.0 enter Tamrac swamp

S. M. Molyneux

- 2136.9 a hub.
 2140 leave swamp.
 2258.5 a hub, 25.48 to left on 8' nail
 set for hub by Donner.
 2380 Set I.M. for M.C. on south
 side of Boss Lake. at brush
 line, which is edge of hard ground
 and enter soft meadow.
 2410 Edge of water.

Meander Line of Rainy Lake
 in Sec. 14-139-30.

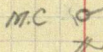
Commencing at M.C. #25 on
 East Bank of Rainy Lake, south
 side of Sec. 14. with transit
 setting over M.C. and looking at
 back-sight on true line to E. I,
 turn $107^{\circ} 45' L.$ for the first
 course, (M.C. west to water is 18')
 at

- | | |
|--------|--|
| 2+00 | 5' L. to edge of water |
| 3+14.6 | Set hub, Def. $32^{\circ} 59' L.$, 22' L. to " |
| 4+15 | cut bank, shore line |
| 5 | " " " Line 5' R. |
| 5+50 | " " " " |
| 5+92.7 | Set hub, " $38^{\circ} 9' L.$, Shore Line 27' L |

G. N. Wolynetz

- 8+00 on cut bank
 8+52 end of boat landing
 8+70 46' R. - Log cottage, new.
 10+00 39' L. to shore line
 10+34 hub, Def $39^{\circ}18' L.$ 35' L. " " " ,
 center of road
 11+50 rising ground
 12+00 35' L. to shore line
 12+75.6 hub, Def $37^{\circ}53' R.$ 32' L. " " "
 To close on M.C. north of Rainy Lake
 14 40' L. to lake
 15+16.9 = M.C. N.

N.E. Ang. $88^{\circ}58'$ ← $88^{\circ}58'$ K meander, closing line.

M.C. 

WEDNESD, JUNE 30, 1915

Fine morning

Molyneux and Harold J. Curo, chaining Meander line, see page 89 & 90. Finish by noon

H. F. Baldwin, instrument

Henry Greenberg, AXC.

Howard Swanberg, flag

Meander Line, Bass Lake - Sec. 14
 Commencing at the M.C. on south
 shore of Bass Lake on west line of
 Sec. 14, wit sight to south I turn
 an angle of $39^{\circ} 58' L$ for
 the first course

0+00 = M.C. corner, on brush line Lake $46^{\circ} E$ 1+00 Brush $6^{\circ} R$, " $20^{\circ} L$ 2+00 " $50^{\circ} R$, " $40^{\circ} L$ 2+66.2 a hub Def $86^{\circ} 48' L$ " 00

to M.C. on S. $1/2$ line on east
 side of lake.

3+00 Brush $15^{\circ} R$, Lake $60^{\circ} L$ 4+00 " $25^{\circ} R$, " $16^{\circ} L$ 5+00 " $25^{\circ} R$, " $40^{\circ} L$ 6+00 " $15^{\circ} R$, " $40^{\circ} L$ 7+00 " $0.0 R$, " $60^{\circ} L$

7+21.8 a hub. M.C. as shown above

W $1/2$ line

J. Molyneux

149° 0' → E

Transit at M.C. on S. $\frac{1}{16}$ line on east side of lake, with sight on hub at Sta 2+66.2 of meaner line, turn angle to left of $144^{\circ} 01'$ to S. $\frac{1}{16}$ line.

Continue meander line around Bass Lake in Sec. 14. from the M.C. on the S. $\frac{1}{16}$ line of Sec. 14 at the east side of the lake as follows:
with transit over M.C. hub and back site at hub at Sta 266.2 def to Left.

7+21.8 M.C. Def $21^{\circ} 00' L$

8

Shore 45' L

9+83.9 hub, Def $77^{\circ} 00' L$

" 110' L.

10

12

" 45' L

13+16.9 hub, Def $28^{\circ} 36' R$

" 20' L

14

" 20' L

16

" 15' L

16+80

" 0.0 L.

17+30

" 0.0 L

18

" 25' L

18+21.0 hub, Def. $58^{\circ} 07' L$.

" 35' L

Sta

of west side

" 20' L

20

22

21+36.1 = Sta 39+70.7 of true line west side Sec. 14

Angle from meander to Sec line to south

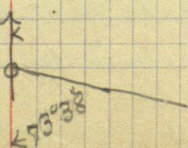
$73^{\circ} 38'$

For Computation of Acreage see

Page 106

(298.2' S. of $\frac{1}{4}$ Sec. Cor.)

Noon



Correction of corners.

No correction Nor S. on E. & West lines as all east and west lines are run and established parallel to a true line from the corner of Secs $\frac{11}{14} \frac{12}{13}$ to the corner of sections $\frac{10}{15} \frac{11}{14}$

The corrections for the corners on the west side of the Sec. from Denvers random line are as follows: correction .011283

S.W. Cor. falls in Rainy Lake, Sec. 92 for M.C. #30

S. $\frac{1}{4}$ " " " Bass " " 93 " M.C. on S. side

$\frac{1}{4}$ " goes E. 42.52 feet from Sta. 37+68.9

N. $\frac{1}{4}$ " " " 57.51 " " "

The N. & S. subdivision line are established on mean lines between the E. & West sides of the section.

The corners along the N. $\frac{1}{4}$ line correct as follows, as the south side is longer by 9 minutes than the north.

N. $\frac{1}{4}$ goes E. 1.88' from Sta 1326.33

Middle $\frac{1}{4}$ " " 3.78 " " 2652.65

S. $\frac{1}{4}$ " " 5.66 " " 3978.98

$\frac{1}{4}$ on S. Sec. line " " 7.55 " " 5305.30

The corners of the N. + S. $\frac{1}{4}$ line go as follow from the intersection point

N. $\frac{1}{4}$ goes east 3.26 ft.

Center of Sec. goes east 6.53'

M.C. on E. $\frac{1}{4}$ goes east 3.60 feet.

Charley Rice setting corners, digging pits and building mounds H.M. entire crew, setting iron monuments for corners, digging witness pits and building monuments. during P.M.

The following corners were monumented with $2\frac{1}{4}$ " x 4' galvanized iron pipe with cap, pits dug as witnesses and mounds built.

E. $\frac{1}{16}$ Cor on south side of Sec. 14.

Drove I.M. 36" in ground, dug pits, one east and one west at 6 ft distance, 30' sq and 12" deep piling the dirt around the I.M. for a mound.

M.C. #8 on south line of Sec. 14 and west bank of Portage Lake, drove I.M. 36" in ground for corner, at 6' distance to west dug a pit 36" sq and 12" deep, for witness pit, piling the dirt around the I.M. for a mound.

M.C. #30 on west line of Sec. 14 and north bank of Rainy Lake, drove I.M. 36" in ground for corner and at 6' distance to north dug a pit 36" sq and 12" deep for a witness pit, and piled the dirt around the I.M. for a mound.

M.C. on west line of Sec. 14 and south bank of Bass Lake, drove an I.M. 36" in ground, for corner and at 8' distance south a pit 36" sq, as a witness and piled the dirt around the I.M. for a mound.

Ed. Jolyneux

M.C. on S. $\frac{1}{16}$ line and east bank of Bass Lake drove an I.M. 24" in the ground for corner, and at 6' distance to east, dug a pit 30" sq and 12" deep as a witness and piled the dirt around the I.M. for a mound.

W. $\frac{1}{16}$ corner on S. $\frac{1}{16}$ line

drove an I.M. 36" in the ground for corner and at 6' distance north & south dug pits 30" sq. and 10" deep, for witness pits, and piled the dirt around the I.M. for a mound.

M.C. on S. $\frac{1}{16}$ line and west bank of Portage Lake, drove an I.M. 36" in the ground for a corner and at 6' distance to the west dug a pit 36" sq. and 12" deep as a witness pit, and piled the dirt around the I.M. for a mound.

N. $\frac{1}{16}$ corner on W. $\frac{1}{16}$ line

drove I.M. 36" in ground for corner, and 6' distance north and south dug pits 30" sq. and 12" deep, for witness pits, and piled the dirt around the I.M. for a mound

N. $\frac{1}{16}$ corner on west side of Sec. 14.

drove I.M. 36" into soft swampy ground on marked bearing trees as follows.

Tamrac 5" N. 72° E 46.20 ft. atack.

Spruce 3" N. $40^{\circ} 20'$ W. 51.40' feet.

Pits not practical on account of soft ground.

W. $\frac{1}{16}$ on between sections 14 and 11

This true corner falls in a small cree
where it is impossible to hold a I.M. so
I put one I.M. 20 ft to west of true
corner and one I.M. 50 ft to south of
corner as follows:

I.M. on true section between sections 11 & 14 at a
point 20 ft west of the true corner, drove
36" in ground for Witness Corner and at
6' distance to west dug a pit 30" sq and
10" deep, as a witness pit, and piled the
dirt around the I.M. for a mound.

I.M. on true $\frac{1}{16}$ line at a point 50 ft south
of the true corner, drove 36" in ground
for Witness Corner and at a distance of
6' to south dug a pit 30" sq and 10" deep,
as a witness pit, and piled the dirt
around the I.M. for a mound.

$\frac{1}{4}$ Sec. Cor. between sections 14 & 11

drove I.M. 36" in ground, in place of Tamrac
post, ground too soft for pits and mound.

Gov. B. T. & N. W. stump still well preserved
Next B.T.

Tamrac 7" S. 57° W 17.15 ft.

Fine day

Quit

J. M. W. by name

14-139-30

July 1st 1915 - Thursday.

F. N. Molyneux, in charge

H. E. Baldwin, instrument man

Herald J. Caura, axe

Howard Swenberg, "

Charley Rice, "

Entire crew working on monuments
till 2 P.M. when all work previously laid
out is finished.

The following corners were monumented
the standard galvanize iron pipes 2 1/4" x 4' with cap
pits dug mounds built.

1/4 Sec. Cor. between sections 14 & 15

Drove an I.M. 36" in the ground for the
corner and at a distance of 6' north and
south, dug a pit 30" sq and 10" deep
for witness corners and piled the dirt
around the I.M. for a mound.

N. 1/16 corner on the E & W. 1/4 line

Drove an I.M. 36" in the ground for the corner
and at a distance of 6' east & west dug
pits 30" square and 12" deep, for witness
pits and piled the dirt around the
I.M. for a mound.

Center of Sec. 14

drove an I.M. 36" in the ground

14-139-30

At 1-30 P.M. Mr. Henry Greenberg arrived with a letter from J. W. Curo instructing us to lay off and monument a strip of land 20 rods (330 ft) wide and clear across the north side of Lot 3, Sec. 14-139-30.

Molyneux in charge.

H. F. Baldwin at transit

Harold J. Curo axe.

Charley Rice "

Howard Swanberg flag.

At 2 P.M. we went to the N.W. corner of Lot 3, Sec. 14 and measured south 330' (20 rods) along the true West 1/4 line which is the west side of Lot 3. and the S.W. corner of the tract in question. At this point we set the transit ^{over} the hub and run a brush and hub line east and parallel to the E. & W. 1/4 line for the south side of said tract or strip of land and at.

2+08.5 a hub

Quit work for the day

Showers to day, one hard one just before noon, light one at 2 P.M.

Give H. Greenberg a day for bringing out the I.M. and letter.

Cooler at night

D. Molyneux

July 2, 1915 - FRIDAY,
Baldwin

Harold J. Curo

Harold Swenberg,

Fine morning, cool

Continued the survey of the Arthur R.
Thompson tract. as follows

7+68.5 a hub

9+17 cross road

11+70.0 a hub

13+20 = point on N. + S. random line 330 ft south
of E + W. $\frac{1}{4}$ line

15+15.8 a hub, top of high lake bank

15+75.5 a hub for M.C.

15+88.3 = 25+67 of meander of Portage Lake

15+94 edge of water
Angle to S.W. $60^{\circ} 48'$

S.W. Cor of A.R. Thompson tract we drove
an I.M. 36" in the ground for the corner.
and at 6' distance north and south dug
pits 30" sq. and 12' deep, for witness pits
and piled the dirt around the corner for a mound.

M.C. south line, on bank of Portage Lake

drove I.M. 36" in ground for corner and at 6 ft
distance west dug a pit 36" sq and 12" deep for
a witness pit and piled the dirt around the
corner for a mound.

Molynaux checking notes H.M.
and walks to Backus after dinner
going to Walker on the 7-06 train

Balance of crew getting camping
outfit ready to move

Showers again to day

Horton going out early in the morning to
move camp outfit to Backus.

Survey work (field) of Sec. 14
139-30 at Portage Lake finished

At 10 P.M. Hortons Team calls &

Baldwin & Swanberg go to Backus and
take train Baldwin to Walker - Fare 49¢
Swanberg to Cass Lake

Harold Coro and Charlie Rice
remain in camp.

We are to subdivide Lot 2
Sec 14 - 139-30.

July 31st 1914. Molynaux to Portage
Lake. Survey of Sec. 14, 139-30. Survey
on Map. Baldwin checking
bearing etc. on July 31st.

$$\begin{array}{r}
 14600 \\
 147396 \\
 143000 \\
 \hline
 304996 \text{ sq. ft.} \div 43560 = 7.002 \text{ Acres} \\
 \text{in NW } \frac{1}{4} \text{ SW } \frac{1}{4} \text{ Sec 14}
 \end{array}$$

$$\begin{array}{r}
 28028 \\
 21168 \\
 16272 \\
 \hline
 65468 \text{ sq. ft.} \div 43560 = 1.504 \text{ Acres} \\
 \text{in Lot 5 Sec 14.}
 \end{array}$$

N

I.M. Cor

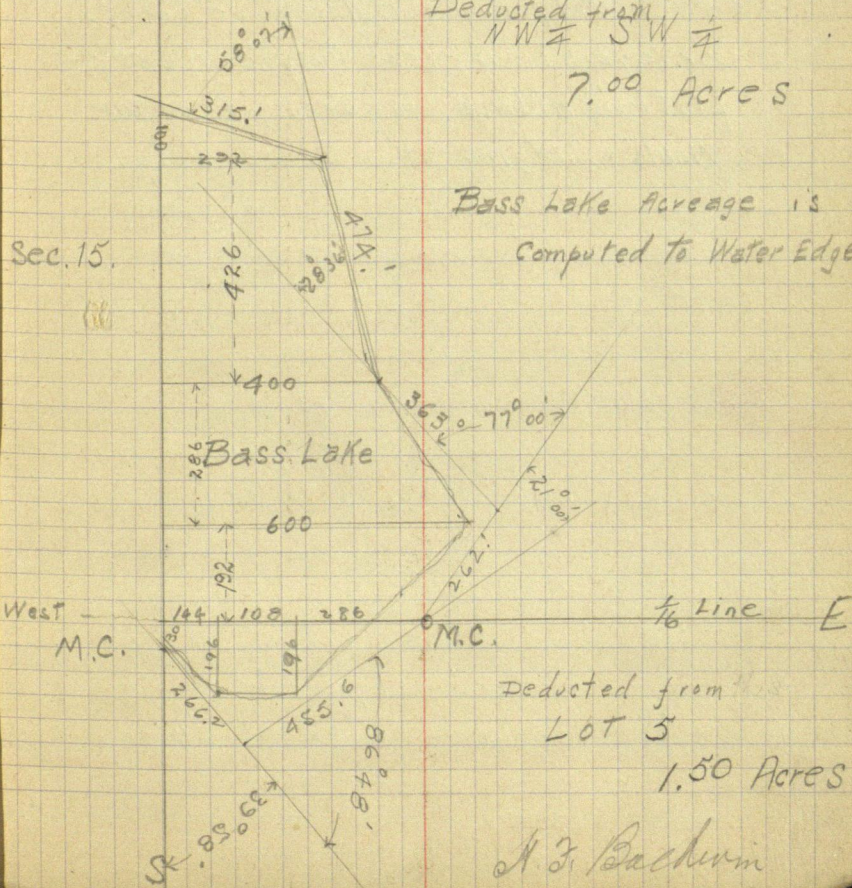
 $\frac{1}{4}$ Line

Sec. 14

Deducted from
NW $\frac{1}{4}$ SW $\frac{1}{4}$

7.00 Acres

Sec. 15.

Bass Lake Acreage is
Computed to Water Edge.

A. J. Bachman

July 3rd 1915 - Saturday -
 In Walker - Cold day - Showers -
 Molyneux busy on plat sec 14-139-30
 all day. in County Surveyor's Office.

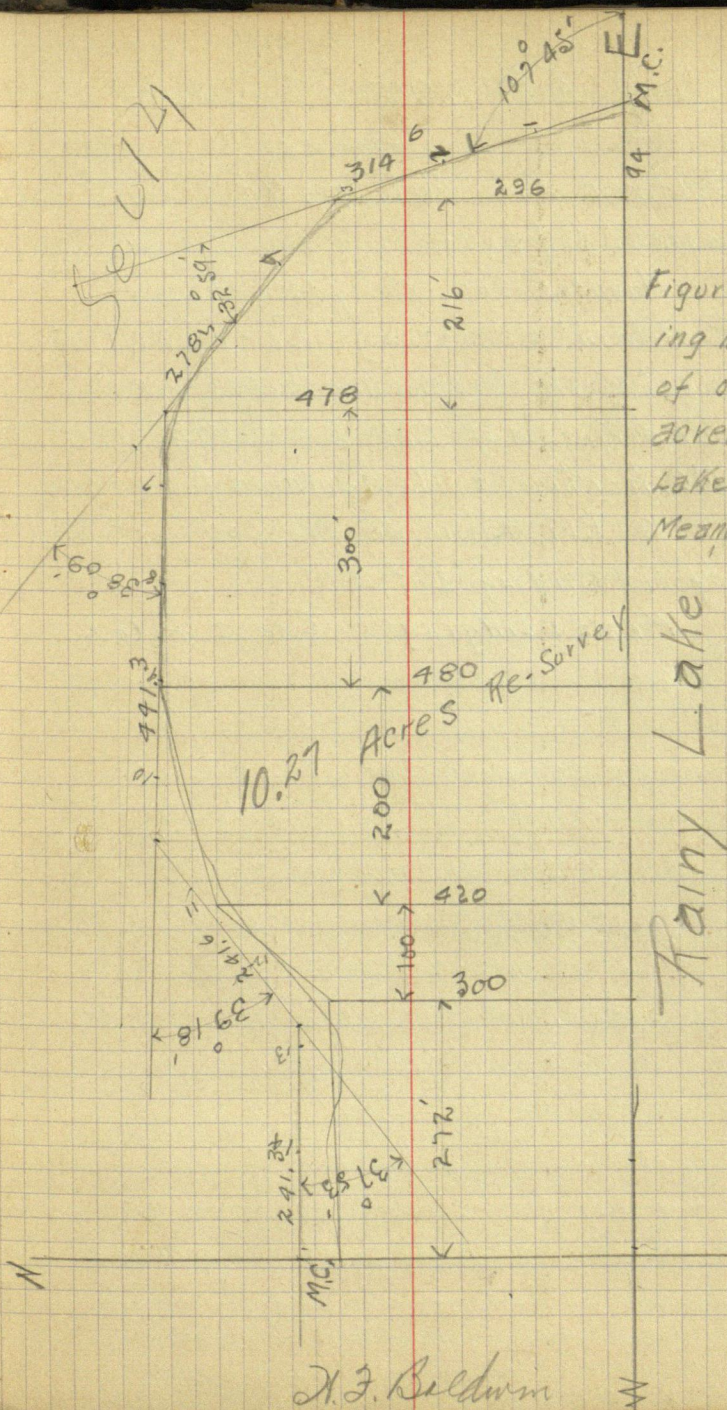
Baldwin in " " " busy on
 notes Webb lake etc.

Meals & Lodging Chase Hotel.

July 4th 1915 - Sunday -

Molyneux & Baldwin in County
 Surveyors Office Molyneux busy on
 plat 1 Baldwin figures Acreage etc.

Meals & Lodging at Chase Hotel.



July 6th 1915 - Tuesday -
Fine day

Baldwin and Molyneux in County Surveyors Office

Molyneux busy on plats etc.

Baldwin assisting Curo with time sheets and preparing notes for Subdivision of Lot 2 - Sec 14 - 139-30
Mr Horton & Mr Hammond arrive on 4 P.M. train we discuss best plan of subdividing Lot 2.

Meals & Lodging Chase Hotel.

Survey Hammond Tract

110

July 7th 1915 - Wednesday -

Breakfast Chase Hotel - Walker - Fine day -

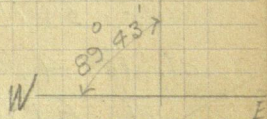
Work in County Surveyor's Office 8 A.M. until 9 A.M. when Molyneux & Baldwin take train for Backus. Fare 49¢ each. They take supplies from Bailey's Store as phoned for by Charley Rice.

Horton's team brings Baldwin & Molyneux to camp at Portage Lake. After dinner Molyneux returns to Backus with team taking his instrument etc.

Baldwin - Transit

Harold Curo - Chain & flag & axe

Charlie Rice - Axe



Starting at Iron Monument at Center of Sec 14 we measure 33 ft east along east & west $\frac{1}{4}$ Line. Here we put in a hub & sighting at West turn angle to right $89^{\circ} 43'$.

This Line is East boundary of Road & West boundary of Lots running to Lake shore.

at 1+57.9	a hub	
" 2+33.0	a hub	Corner of Lot
" 4+33.0	a hub	" " "
" 6+33.0	a hub	" " "
" 8+33.0	a hub	6+47 a Norway Pine 10" stands on Line
" 9+19.5	" "	Corner of Lot.
" 10+33.0	a hub	Lot Corner
" 10+66.0	a hub	North side of Road.

A. J. Baldwin act for night.

Weather fine

July 8th 1915 - Thursday -

Baldwin - Transit.

Harold Curo - Chain & flag & axe

Charlie Rice - Axe.

continue line north started yesterday
at 12+04.⁰ a hub.at 13+26.⁰ Iron Monument is 33 ft West.At 10+66.⁰ 9 backsight south & turn
Angle 89° 43' Left. and run line east.at 1+29.¹ a hub" 2+06.⁰ a hub

" 3+71.8 a pt. on birch stump.

at Sta. 4, 5 Cranberry Marsh is 90 ft North.

at 6+70 a hub 6+80 Road

at Sta 8 Road Frame Barn 65 ft Right.

9, at 8+50 Shack 5 ft Left and old Log Barn 35 ft Right

at 8+85 Well with pump 33 ft. Right.

9+54.⁵ a hub at intersection of MeanderLine = 41+51.⁵ on Meander line

Angle to North west is

135° 05'

boat landing 20 ft Right. from hub

at intersection.

Going back to 8+33.⁰ on line run yes-
terday I turn an angle of
90°-17' to north east.at 2+04.³ a hub" 5+27.³ a hub

Horton brings 10 small pipe for Monuments

A. J. Baldwin

Subdivision Hammond Tract.

112

July 9th 1915 Friday —

A.M. Rains hard at 5.30 until 10.30

All in camp Baldwin writes up Notes

P.M. Baldwin — Transit

Harold Curo — Chain, flag & Axe

Charley Rice — Axe

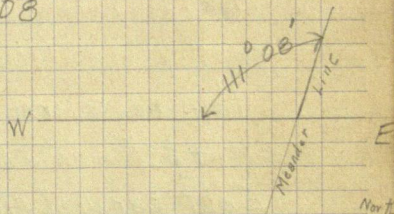
Continuing Line east started yesterday
at 6+15.8 a hub

" 6+18 a Jack Pine tree 10" stands on line

" 6+69.6 even slope to Lake shore

" 6+77.0 Road

Intersection 8+04.4 = 38+68² Meander
Angle to North West = 111° 08'



Now we go to 6+33.0

on North & South Line & start Line parallel to one 200 ft.

East -- at 1+84.5 a hub

hub at 4+21.2 a tacked on Jack Pine Stump

at 4+70 a 12" Jack Pine stands on Line.

" 4+90 an 8" " " " " "

" 6+17 Road

Quit for night

H. J. Baldwin

Survey of Hammond
Saturday July 10th 1915. Fine day

Baldwin -- Transit

Harold Curo -- flag - Chain & Axe.

Charley Rice -- Axe & Chain

Continuing Line Left yesterday

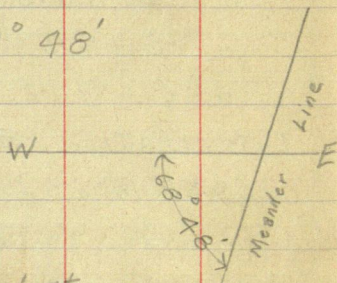
at 6+63.⁸ a hub on top of bank.

at 7+15. bottom of bank.

" 7+26.⁵ a hub on intersection of Meander Line

at 36+54.⁷

Angle to South West $68^{\circ} 48'$



Now we return West and at

4+33.⁰ on North & South Line start line
East parallel to one 200 ft north.

at 3+00.⁴ a hub

" 5+76.¹ a hub on top of bank.

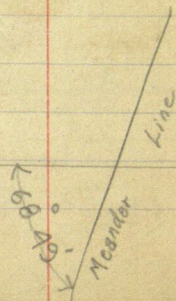
" 6+30 bottom of bank.

" 6+48.⁰ intersect Meander Line at

34+40.⁰

Angle to South West = $68^{\circ} 49'$

6+80 to Water - W



H. J. Baldwin

Subdivision of Lot 2 - Sec 14 - 139-30 - 114

Saturday July 10th 1915 continued

Going West to North & South Line We start
a line East parallel to lines to north

hub at $2+33.0 = 0+00$

at $3+10.2$ a 10" Norway Pine stands on line.

at $3+45.86$ " " " " " "

" $3+62$ a hub

" $4+34$ Road

" $5+07.8$ a hub on top of bank.

" $5+69.5$ intersect Meander Line at
 $32+24.3$

Going to East & West Line We chain North
parallel to line at West end of Lot. a distance
of $2+33.0$ ft checking the line East from
 $2+33.0 = 0+00$

Then from hub at $5+07.8$ I turn angle of
 $89^{\circ} 43'$ to N.W. & chain 200 ft. north

checking line East from $4+33.0 = 0+00$

At intersection of Random Line of
North & South $\frac{1}{4}$ th Line at West side of Lot 2

We measure 3.90 ft East to true line & set
Iron Monument $2\frac{1}{4}" \times 4"$ with cap

driven 36" in ground and pits to
North & South $30"$ sq. $\times 12"$ deep for witness
pits & piling dirt around I.M. for mound

H. J. Baldwin

continued Survey of Hammond
Monday July 12th 1915 Fine day - Hot -

The following Corners are marked by monuments of $1\frac{1}{4}" \times 4'$ Galvanized pipe with no caps.

N.W. Corner
North Lot

We drive I.M. and dig witness pits
6' North \times 6' South 20" square \times 12" deep.
placing dirt around I.M. for mound.

5 Iron Monuments at N.W. Corners of Lots.

N.W. Corner
North Lot
At the North West Corner of Each
Lot we place $1\frac{1}{4}" \times 4'$ I.M. with
witness pits as above described.

5 Iron Monuments at intersection of Meander Line

At the intersection of each Lot line
east \times West with Meander Line

we drive $1\frac{1}{4}" \times 4'$ I.M. 36" in ground
 \times dig one witness pit 6 ft. West of
I.M. 30" square \times 12" deep piling dirt
around I.M. for mound.

The N.E. Corner of the north Lot
is found by measuring 33 ft. south from
two hubs \times at intersection of this
Line 33 ft south of Line East from
 $10166.0 = 0+00$ with meander Line we
drive $1\frac{1}{4}" \times 4'$ I.M. with pit \times mound
as above described.

H. J. Baldwin

Subdivision of Lot 2. - Sec 14 - 139-30

116

Monday July 12th 1915 - continued -

At point of intersection of Line East from
 $10+66.0 = 0+00$ With Meander Line

$$9+54.5 = 41+51.5$$

We drive a $2\frac{1}{4} \times 4'$ I.M. 36" in the ground
and at 6 ft. West dig one pit 30" square
& 12" deep for Witness pit & pile dirt
around I.M. for Mound.

Just as We are finishing John W. Coro
arrives in Auto with Howard Swanberg
and James Horton & driver.

They stop for dinner.

After dinner we paddle across Lake & stake out
a Triangular Lot for Judd Lamour.

Baldwin & Harold Coro & Charley Rice. Work.

Sunday July 11th 1915. - Fine day - Hot -

P.M. Baldwin & Harold Coro

Chained from a ptn Line East from $4+33.0 = 0+00$
(parallel to west side of Lot 2.) 200 ft North
Checking Line East from $6+33.0$ and 200 ft
to Line East from $8+33.0$ and 233.0 ft North
to Line East from $10+66.0$

After Checking these lines We correct $E \frac{1}{16}$ Cor
bet Sec 14 & 11 North 1.70 ft. The $\frac{1}{4}$ Cor. bet. 14-11
North 3.40 and the West W.C. of $W \frac{1}{16}$ Cor bet
14-11 North 1.70 ft. Arrive Camp 6.30
H. J. Baldwin

Time Sheet July 3rd to July 12th 1915
 Subdivision Lot 2 Sec 14-139-30

Name	3	4	5	6	7	8	9	10	11	12	
Harold F. Baldwin -	in	Walker	1	1	1	1	1	1	$\frac{1}{2}$	$\frac{1}{2}$	
Harold J. Curo -	"	Camp	$\frac{1}{2}$	$\frac{1}{2}$	$\frac{1}{2}$	$\frac{1}{2}$	$\frac{1}{2}$	$\frac{1}{2}$	$\frac{1}{2}$	$\frac{1}{2}$	
Charley Rice -	"	"	$\frac{1}{2}$	$\frac{1}{2}$	$\frac{1}{2}$	$\frac{1}{2}$	$\frac{1}{2}$	$\frac{1}{2}$	$\frac{1}{2}$	$\frac{1}{2}$	
Howard Swanberg -	0	0	0	0	0	0	0	0	0	0	
James Horton -					$\frac{1}{2}$ Trip	$\frac{1}{2}$ Trip				Trip	

Record
 No
 500

119

OONTHY ROTH

4-14-139-30

T @ 1 BS 2

62-11-25

90-07-30

244.82

244.819

1/4 124-28-50 62-14-25

91-11-50

372.97

372.889

T @ 2 BS 3

204-44-36

4 49-28-48 204-44-24

T @ 4 BS 2

152-38

91-00

480.96

480.887

5 305-15-42 152-37-51

90-47-48

283.35

283.327

T @ 5 BS 4

127-68-42

6 254-17-06 127-8-33

T @ 6 BS 5

166-40-42

89-17-18

333.13

333.104

7 333-21 166-40-30

88-59-50

343.08

343.028

T @ 7 BS 6

307-31

W/4 255-02 307-31

97-52

68.35

67.707

127-24-54

8 254-49-34 127-24-47

92-01-31

166.40

166.296

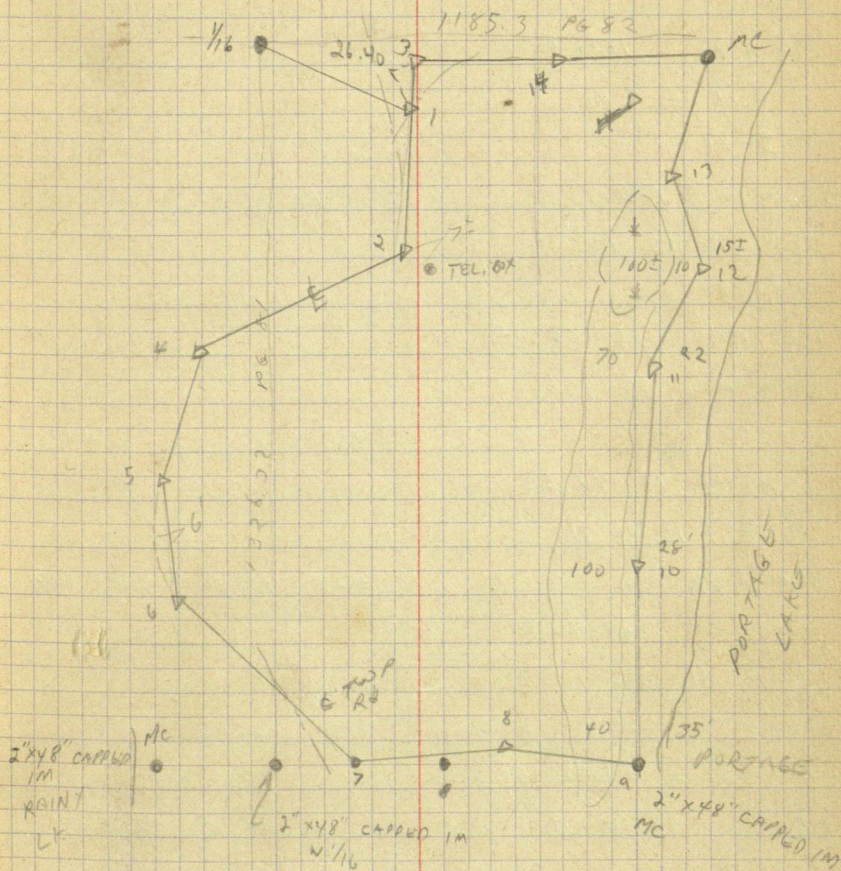
T @ 8 BS

180-08-06

9 0-15-54 180-07-57

EL CUR
STEVE J. 120

10-19-82



121

D. ROTH

 $\pi @ 3$ BS 14

121-0-25

2 242-0-40

121-0-20

 $\pi @ 14$ BS MC

175-33-40

105-45-42

110.45

106.297

3351-06-42

175-33-21

89-18-54

686.40

686.351

 $\pi @$ MC BS 13

65-08-20

14 130-16-36

65-08-18

 $\pi @ 13$ BS 12

190-45

89-20-30

134.45

134.421

MC 21-29-45

190-44-53

90-04

403.33

403.329

 $\pi @ 12$ BS 11

158-44-50

89-34-30

188.16

188.154

13 317-33-30

158-46-45

8

 $\pi @ 11$ BS 10

186-55-42

90-03

382.70

112 130-50-50

186-55-55

 $\pi @ 10$ BS 9

199-53-57

11 39-48

199-54

 $\pi @ 9$ BS 8

103-13-54

84-04-46

297.58

295.993

10 206-27-30

103-13-45

89-46-24

380.38

380.377

Lamour Tract

P.M. Monday July 12th 1915 - Hot -
 Baldwin - Transit Day

Harold Curro - Flag + Chain.

We were assisted in chaining by two boys camped at Cottage of people for whom we are surveying.

After dinner we paddle across Portage Lake.

Mr. Lamour is gone but his man Tom takes us to M.C. No. 6. which is also the $\frac{1}{4}$ Cor between secs. 13 and 24 Twp 139 Rg 30 marked by Iron Monument.

A State Road runs from south & turns East along section line at this point.

Starting at M.C. No. 6. & Running East on $9^{\circ}16'$ Var. We have at $3+41.5$ a hub

$18+46.7$ a hub

at hub $26+52.5$ true corner

S.E. section 13 marked by Iron Monument stands south 6.34 ft. correcting back. $[.00239]$

hub at $3+41.5$ goes south 0.82 ft.

We now await the return of Mr Judd Lamour who is returning from South on afternoon train.

D. J. Baldwin

Upon Return of Mr. Lamour We
Setup at hub 349.5 and sighting on Iron
Monument at $\frac{1}{4}$ Cor. + M.C. No 6.

Set hub at $2+30.0$ ft East of I.M.
 Setting up Transit at $2+30.0$ back sight on
 I.M. & turn angle of $58^{\circ} 24'$ Right.
 hub at $0+85.0$ Cottage Left 33 ft.
 at $2+43.0$ a hub

at 3+27.6 Hob Lakeshore 6ft West.
Here we drive. at 1/2" Galvanized
Water Pipe 6ft Long for M.C.

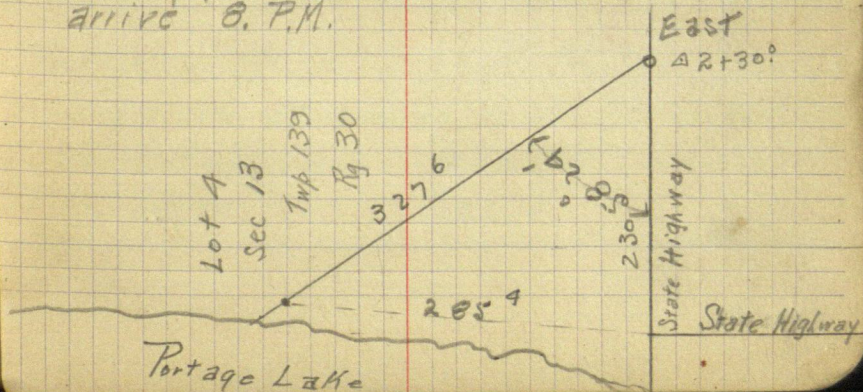
Chaining to M.C. No 6 distance = 2185.4 ft.

Lakeshore 107 ft. West of M.C. No 6.

At 2+30.0 1 1/4" Water Pipe Galvanized 18" Long drive flush with ground

We were late waiting for Mr Lamour
& did not finish at 6 P.M. & work after supper.

We accept invitation of Mr Lamoiv
to supper & paddle across Portage Lake
arrive 8. P.M. (East)



Monday June, 7, 1915

Leave Backus for Pillager (fare 1.22)
 via Brainard. Meet W. B. Jones
 who took me to G. Smith's farm.
 I go to $\frac{1}{4}$ cor. btw sec's 2-3 -134-30
 where U.S. notes call for:
 W.P. 20 N 50 W 123. I find W.P.
 stump standing from which I
 establish cor. set "I M"

Tuesday June, 8, 1915

Gorman Transit, G.W. Smith chain,
 H. Collins & J. Duffey Ax

Start survey for Road

Begin at $\frac{1}{4}$ cor. btw sec's. 2-3

Run N on True line

415.0 Hub - Road center

712.1 " " "

1322.1 " " "

From this pt. course of Road is as follows:

N $59^{\circ}44'E$ 433.65

N $23^{\circ}W$ 226.4

127 Twn 134 R9 30

335

Tuesday (contd) June, 8, 1915

N 27° W 363.4

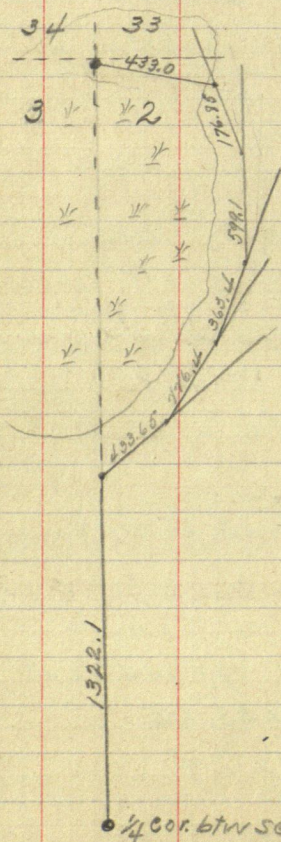
N 16° 05' W 599.1

N 20° W E 176.85

From this pt. True cor to sec's
2-3-134-30 & 33-34-135-30 Pres

2-3-134-308 33-34-135-30 Pres

N 5-8° W 433.07'



335

Tuesday (cont'd) June, 8, 1915

Beginning at $\frac{1}{4}$ cor. btm. sec's 2-3
run E Var. $90^{\circ}15'$

1202.15 Hub
1405.5 "
1892 "
1700 enter marsh
2150 Lv "
2412.6 Hub
3326.75 "
3709.75 "
3820.0 cross creek

Wednesday June, 9, 1915

Beginning at Hub 3982.5

3982.5 Hub
4095. cross creek
4909.5 Hub
5271.75 $\frac{1}{4}$ cor btm sec's 1-2 Pres
N 37 ft.

335

129 Twn 134 R930

335 1

Wednesday (cont'd) June, 9, 1915

Correcting Back [000569]

4909.5	goes to	2.79
3982.5	" "	2.25
3709.75	" "	2.11
3326.75	" "	1.89
2412.6	" "	1.37
1892	" "	1.07
1405.5	" "	.80
1202.15	" "	.68

From 1/4 cor. btrw. sec's 2-3

set up on "I. M." sight on True

cor. to sec's 2-3-10-11 set road

centers every 400 ft and chain

450 enter swamp

1700 cross creek

1850 Lv. swamp

2500 enter swamp

2645.3 cor. to sec's 2-3-10-11.

Stayed 2 days with Geo Smith.

W. B. Jones Takes me to E. A. Cole's farm

335 1

335 130

Rain all day. I work on field notes.

A. Cole charm E. Cole Ax
Gorman Transit H. Collins Ax

Begin at $5 \frac{1}{16}$ cor. on N+S center line
To run $\frac{1}{16}$ line to Stony Lake

25°
 0
 $25^\circ \checkmark 90^\circ$
 $= M.C. No 18$

75

15

335

134

TWN 134 R9 30

335

Friday (cont'd) June 11 1915

L^T 16° 46' S 39° 50' W 277.9L^T 19° S 18° 30' W 733.0R^T 25° S 46° W 560.0L^T 10° 51' S 35° W 505.1R^T 19° 33' S 16° W 141.5 = culvertR^T 19° 33' S 16° W 164

U.S. notes call for M.C. at this pt.

There are no Bts. to be found and
as the petition states that road

shall follow sec. line btw secs. 8-17,

I will have to establish M.C.

The last survey was made by Todd
and I will have to go to Pillager
Telephone to the office for field notes.

Saturday June 12, 1915

Go to Pillager with Farmers cream
wagon and put in call for Curo.

Not able to get Curo. I send

"diplomatic note" trusting to Uncle Sam's
efficient mail service to do what the
"famous" Bell Telephone System failed
to do. Find John.

335

Time Sheet on survey for roads. Twn 134-R9 30

June

	6	7	8	9	10	11	12	13	14	15	16	17	18	19	20	21	22	23
German	1	1	1	1	1	1	1	1	1	0								
G.W. Smith		1	1	$\frac{3}{4}$ Rd.														
H Collins			1	$\frac{1}{2}$		1												
J Puffy			1	$\frac{1}{2}$														
E Cole						1												
A Cole						1												

335

Expenses of surveyor German

With Smith	12 114 11	1	
" Cole	12 114 1		
Randall	114 1		

335

132

133

E ALLEY BACKUS

FENSEN - ZAFKE

~~80~~ A C E BS B

94-55-20

1 189-50-40 94-55-20

A C 1 BS E

78-39-40

89-52-30

383.96

383.959

2 157-16-54

78-39-27

90-42-30

334.91

334.884

Clear
65°

June 6, 1983

CURIO

METCHL

Ken Koefker

~~91-42-30~~ 149.30

A C U BS T

90°

125.0'

set 1" I.P. = V

A C V BS U

90°

150.0

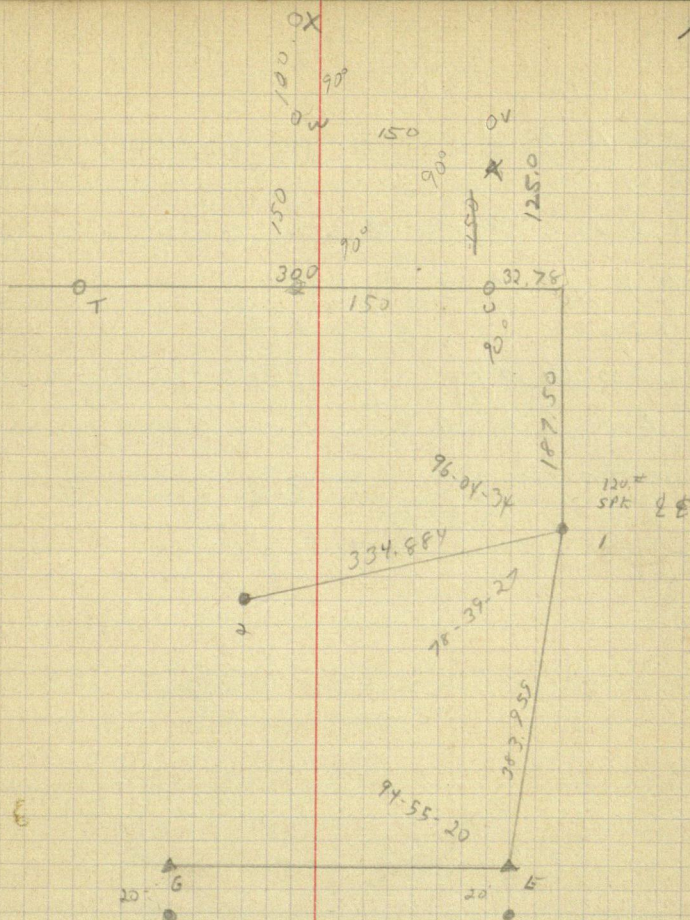
set 1" I.P. = W

A C W BS V

270°

100.0

set 1" I.P. = X



SEE SURVEY FOR IRAN FISHER

135

DORTHY ROTH

$\overline{A} @ A BS B$

80-03

9 160-05-42 80-02-54

$\overline{A} @ B BS C$

171-14-20

90-44-30

A 342-28-30 171-14-15

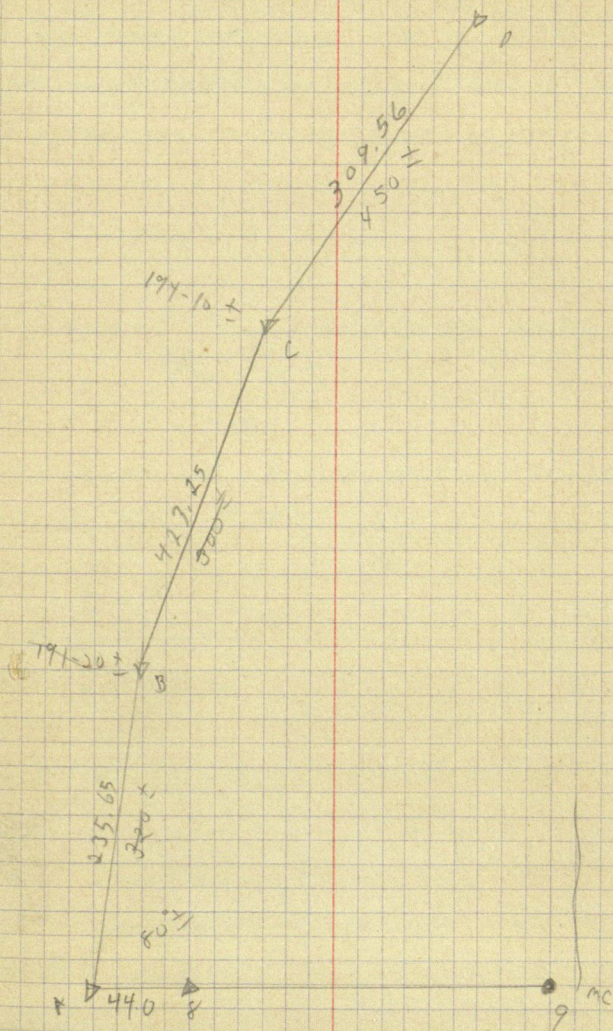
89-24-30

$\overline{A} @ C BS D$

163-28-40

B 326-56-48 163-28-24

143.25
280
423.25
177.56
130
307.56



Twn 134-31

335 '1'38

Sunday June 13 1915

W.B. Jones drives me to E.A. Coles
for my instruments: thence to
Geo. Horns where I will start
survey for Roads in Twn 134-Rg 31

Monday June 14 1915

German Transit

A. Eckland chain

Beginning at cor. to sec. 1-2-11-12
run N Var. $90^{\circ}30'$

200.1 Hub

455.6 "

700 enter Slew

890 Lx "

906.4 Hub

1253.1 "

1310 enter Slew

1400 Lx Slew

1939.4 Hub

2545.5 "

3320. "

3811.1 "

335

139 Twn 134-31

335

Monday cont'd June 14 1915

4594.5

5220.5 cor. to 1-2-35-36 Secs

E 75.75 ft.

Correcting Back [01451]

200.1 goes E 2.902

455.6 " E 6.61

906.4 " E 13.15

1253.1 " E 18.14

1939.4 " E 28.13

2545.5 " E 36.94

2610.0 " E 37.87 To True 4 cor

3320.0 " E 48.18

3811.1 " E 55.39

4594.5 " E 66.66

5770 " E 75.75 to True sec. cor.

to sec's. 1-2-35-36.

At 1/4 cor. bty sec's 1-2 set I.M.

335

141 Twp 134-Tp 31 335¹

Tuesday June 15 1915 Mild

Gorman Transit, Geo. Horn chain,

R. Horn & Eckland Ax

To establish cor. to sec's 8-9-16-17

Beginning at cor. to sec's. 7-8-17-18

Run E Var. 8°30'

1784.5 Hub

3101.15 "

5284.4 "

6598.5 "

8399.1 "

9484.60 "

Wednesday June, 16, 1915.

cloudy & cold

Same crew. continue E

335¹

Thursday

Sept 30, 1915 F. N. Molyneux + H. F. Baldwin go to Onigum to get elevations of building grounds for Mr. Donner. Go over on Gov. boat. Reach agency about 10 A.M. and meet Mr. Mayor who shows us over the grounds and give us some idea as to what is wanted. We then proceed to block the ground into 100' squares. Take dinner at the mess house. At 4 P.M. we take Gov. boat and return to Walker.

Friday Oct. 1st 1915, Molyneux + Baldwin return to Onigum and finish the blocking in A.M. - Dinner at Mess House. P.M. Commence to tie in buildings and take levels. Using U.S. B.M. at 4 P.M. return to Walker.

Wed Oct. 6, 1915, Molyneux + Baldwin go to Onigum + finish tying in buildings and taking levels. Dinner at mess house. Went over in one of Reynolds boats (charge \$1.50) Returned on Gov. boat. All notes kept on X Sec. paper.

Time Sheet

	Sept	Oct			
F. N. Malynex	30	1	6	$7\frac{1}{2}$ night	$3\frac{1}{2}$ days @ $\$5.25$ 17.50
H. F. Baldwin	1	1	1		3 " @ 3 9.00
				$6\frac{1}{2}$ days board @ 1	$6\frac{3}{4}$ 6.75
				Boat over	1.50
					<u>\$ 34.50</u>

145

BOTTLE
LH

ED DESSERT

92-04-24

A @ A BS B

D 89-50-45

148.87 147.063

E A @ A BS E

E 93-06-18

87-11-30

335.75

~~335.75~~

335.347

C 186-12-18 93-06-09

98-56-12

151.26

149.424

A @ E BS A

200.03

161-06-20

F 322-12-41 161-06-20

A @ F BS H

112-03-24

92-19-30

396.21

395.984

E 224-06-26 112-03-18

92-24-10

93.36

93.277

275-10-16

I 170-19-48 275-9-56

87-20-12

136.12

135.773

530 A @ H BS F

194-26-54

K 28-53-30 194-26-45

105-14-30

129.82

125.254

286-36-20

L 213-12-20 286-36-10

107-46-10

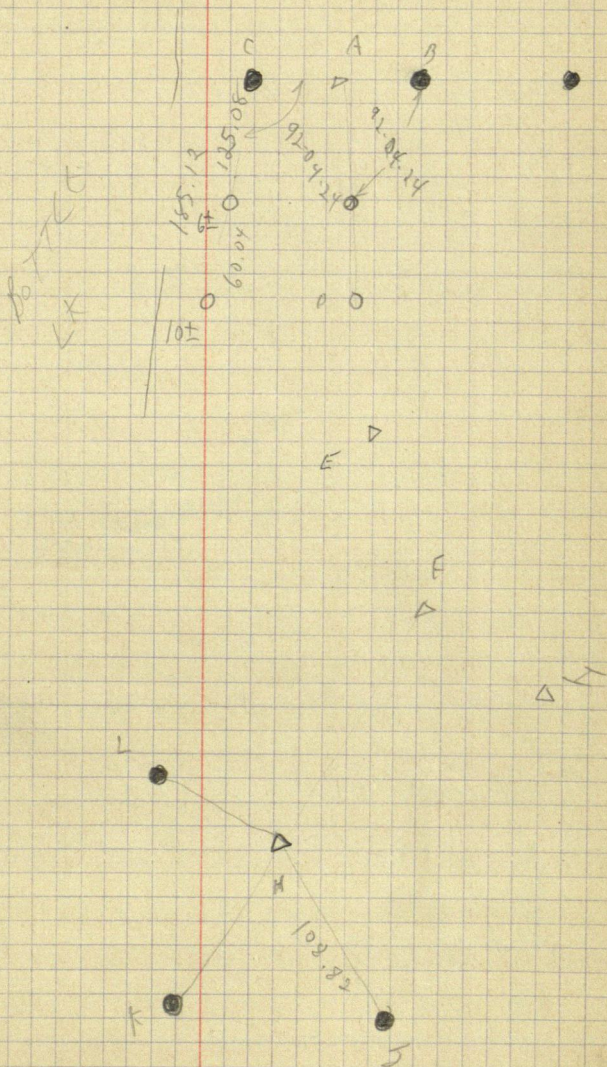
81.51

77.621

J 142-52?

108.82

296.487

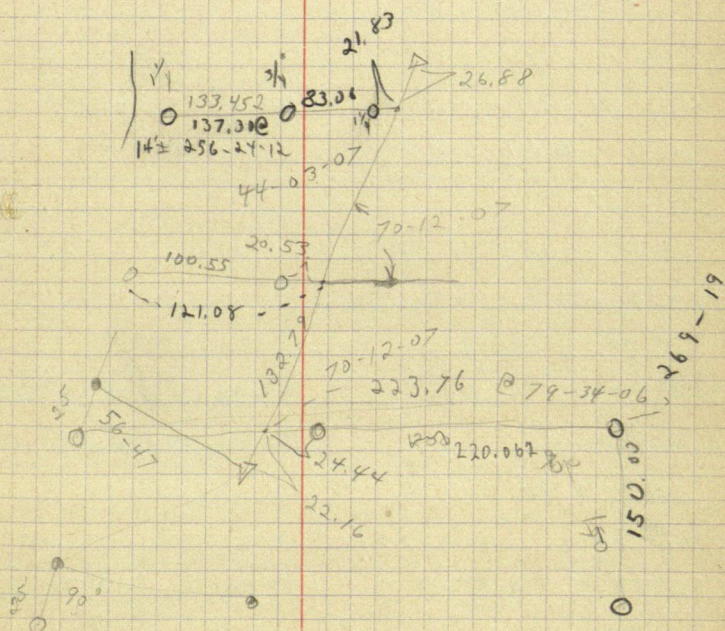


197

269-19-06

128-38

$$\begin{array}{r}
 22.16 \\
 132.29 \\
 \hline
 154.45
 \end{array}$$



F
D

I
D

D₂

7

1

Heller & Brightly No. 8039.

Part 2 No. 8039.

Plumb B.M. C. 1

Tie Plates No. 2.

49+72.8

4700
+ 86167

83,3

1600
1510.4

89.6

685 - 6.5

298.2
35' L, 5 L, 6 L
1300.00
1308.35

191.65

731
685

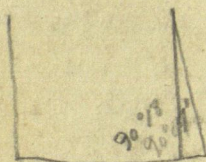
46.25

20' L, 16 L, 20'

37+68.9
298.2

37+70.7

51 road
87 "



$$\begin{array}{r} 13263 \quad 188000 \quad 1000417 \quad 188 \\ \underline{13263} \quad \underline{13263} \quad \underline{330} \quad 188 \\ 56370 \quad 22510 \quad 47 \\ 53052 \quad 4251 \quad \underline{47} \\ 2318 \quad 467610 \quad 7.23 \\ \underline{13263} \quad 99170 \end{array}$$

DISTANCES FROM CENTER OF ROADWAY FOR CROSS-SECTIONING.

ROADWAY 14 FEET WIDE. SIDE SLOPES $1\frac{1}{2}$ TO 1.

FOR SINGLE TRACK EMBANKMENT.

	0	.1	.2	.3	.4	.5	.6	.7	.8	.9	
0	7.0	7.2	7.3	7.5	7.6	7.8	7.9	8.1	8.2	8.4	0
1	8.5	8.7	8.8	9.0	9.1	9.3	9.4	9.6	9.7	9.9	1
2	10.0	10.2	10.3	10.5	10.6	10.8	10.9	11.1	11.2	11.4	2
3	11.5	11.7	11.8	12.0	12.1	12.3	12.4	12.6	12.7	12.9	3
4	13.0	13.2	13.3	13.5	13.6	13.8	13.9	14.1	14.2	14.4	4
5	14.5	14.7	14.8	15.0	15.1	15.3	15.4	15.6	15.7	15.9	5
6	16.0	16.2	16.3	16.5	16.6	16.8	16.9	17.1	17.2	17.4	6
7	17.5	17.7	17.8	18.0	18.1	18.3	18.4	18.6	18.7	18.9	7
8	19.0	19.2	19.3	19.5	19.6	19.8	19.9	20.1	20.2	20.4	8
9	20.5	20.7	20.8	21.0	21.1	21.3	21.4	21.6	21.7	21.9	9
10	22.0	22.2	22.3	22.5	22.6	22.8	22.9	23.1	23.2	23.4	10
11	23.5	23.7	23.8	24.0	24.1	24.3	24.4	24.6	24.7	24.9	11
12	25.0	25.2	25.3	25.5	25.6	25.8	25.9	26.1	26.2	26.4	12
13	26.5	26.7	26.8	27.0	27.1	27.3	27.4	27.6	27.7	27.9	13
14	28.0	28.2	28.3	28.5	28.6	28.8	28.9	29.1	29.2	29.4	14
15	29.5	29.7	29.8	30.0	30.1	30.3	30.4	30.6	30.7	30.9	15
16	31.0	31.2	31.3	31.5	31.6	31.8	31.9	32.1	32.2	32.4	16
17	32.5	32.7	32.8	33.0	33.1	33.3	33.4	33.6	33.7	33.9	17
18	34.0	34.2	34.3	34.5	34.6	34.8	34.9	35.1	35.2	35.4	18
19	35.5	35.7	35.8	36.0	36.1	36.3	36.4	36.6	36.7	36.9	19
20	37.0	37.2	37.3	37.5	37.6	37.8	37.9	38.1	38.2	38.4	20
21	38.5	38.7	38.8	39.0	39.1	39.3	39.4	39.6	39.7	39.9	21
22	40.0	40.2	40.3	40.5	40.6	40.8	40.9	41.1	41.2	41.4	22
23	41.5	41.7	41.8	42.0	42.1	42.3	42.4	42.6	42.7	42.9	23
24	43.0	43.2	43.3	43.5	43.6	43.8	43.9	44.1	44.2	44.4	24
25	44.5	44.7	44.8	45.0	45.1	45.3	45.4	45.6	45.7	45.9	25
26	46.0	46.2	46.3	46.5	46.6	46.8	46.9	47.1	47.2	47.4	26
27	47.5	47.7	47.8	48.0	48.1	48.3	48.4	48.6	48.7	48.9	27
28	49.0	49.2	49.3	49.5	49.6	49.8	49.9	50.1	50.2	50.4	28
29	50.5	50.7	50.8	51.0	51.1	51.3	51.4	51.6	51.7	51.9	29
30	52.0	52.2	52.3	52.5	52.6	52.8	52.9	53.1	53.2	53.4	30
31	53.5	53.7	53.8	54.0	54.1	54.3	54.4	54.6	54.7	54.9	31
32	55.0	55.2	55.3	55.5	55.6	55.8	55.9	56.1	56.2	56.4	32
33	56.5	56.7	56.8	57.0	57.1	57.3	57.4	57.6	57.7	57.9	33
34	58.0	58.2	58.3	58.5	58.6	58.8	58.9	59.1	59.2	59.4	34
35	59.5	59.7	59.8	60.0	60.1	60.3	60.4	60.6	60.7	60.9	35
36	61.0	61.2	61.3	61.5	61.6	61.8	61.9	62.1	62.2	62.4	36

Calculated by Julien A. Hall, M. Am. Soc. C. E.

MADE IN GERMANY.