

76.

MINING
TRANSIT BOOK

363

Index

Page to Page

Horst and Wilson Subdividing sec 4-136-29.	1 to
Horst's Notes on Sec. 4-136-29	1 to 15.
Wilson's " "	15 " 28
Time Sheet "	Page 6.
Horst Twp. Road 138-31+32	31-40
" 137-32	43-54

1.
Recorded.

136-29-sec 4.

Saturday. May. 27-1916.

J. W. Curo, F. F. Wilson and E. B. Horst
begin subdivision of Sec 4-136-29.

We leave Walker for Jenkins on
9-28 train R.R. fare each \$0.79 cts
Wilson & Horst get dinner at Jenkins
Hotel, each \$0.35.

after dinner we are taken (with 2 New
Linsley transits and outfits) to sec 4.
by a livery team hired by Curo.

Curo takes us around the section
shows us the corners previously
established by him, and we hunt
up the corners that were not previously
located.

Curo makes arrangements with
Mrs. M. H. Cochran to board Wilson
and I while on survey of sec. 4
and returns to Jenkins

E. B. Horst.

P.S. carpet tacks at Peguot
cash \$0.05 cts
E. B. H.

Sunday May 28-1916.

I take Gurley transit and outfit and Mr. H. Cochran as a man, and walk to N.W. Cor of sec 4-136-29 where I find closing corner set by Curo. I set transit up on top of a hill about 300 ft W of C.E. of sec 4 and send Cochran E on graded road $\frac{1}{4}$ mi to set flag at S.E. cor of sec 33-137-29 (being a standard corner) and I set a flag at $\frac{1}{4}$ cor in center of graded on S side of sec 33 being estab by Curo. I set transit on true line and extend transit line E on N side of sec 4. at true N.W. corner of sec 4 closing Cor. sets N 0.8 ft. - We begin chaining at N.W. Cor sec 4 and chain E on road at 1565 ft E S.E. cor sec 33-137-29 end of E + W road - road runs N at 2594.4 E. a Cement block 8 in sq above ground 0.6 ft. marked thru + marking $\frac{1}{4}$ cor N side sec 4. I triangulate large slew but on account of high winds I decide to chain across Wilson and Meline work on S side of sec 4

E. B. Horst.

136-29-sec. 4.

Monday May 29-1916

Horst, transit, Albert Anderson flag
& Chain^{man} Philip Seidl, a pcontinue N boundary line of sec 4, E
from $\frac{1}{4}$ corner $\frac{1}{4}$ cor = 0.0 ft.

at 200. ft E enter Gannick swamp

" 500. " " " open "

" 620. " " " dry land pit

" 725. " " leave " " ent surf

" 1450. " " enter " land

" 1810. " " " wet meadow

" 1940. " " leave meadow

" 2150. " " ent wet "

" 2400. " " leave " "

" 2594.4 " " I.M. N.E. Cor sec 4

enter Jack Pine grove & continue E
to S.E. cor of Sec 34-137-29 as a check
for true standard line

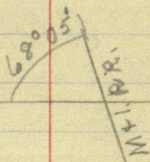
at I.M. = Sta 0.0 ft E

at 1290.4 ft E M + D. Ry.

" 1667.8 " " S.E. Cor sec 34

Wood post.

twopl line



E.B. Horst.

we return to I.M. at N.E. cor sec. 4.
 set by Curo. I set transit over I.M.
 sight W to $\frac{1}{4}$ cor and turn S.W. angle
 $90^{\circ}22'$ and run line S along E side sec 4
 at 1000 ft S set stake 6

" 1076 " " " 14th.

" 2000 " " crossold road runs S.E.

" 2091 " " set 14th.

" 2346.6 " " " I.M. $\frac{1}{4}$ Cor E side

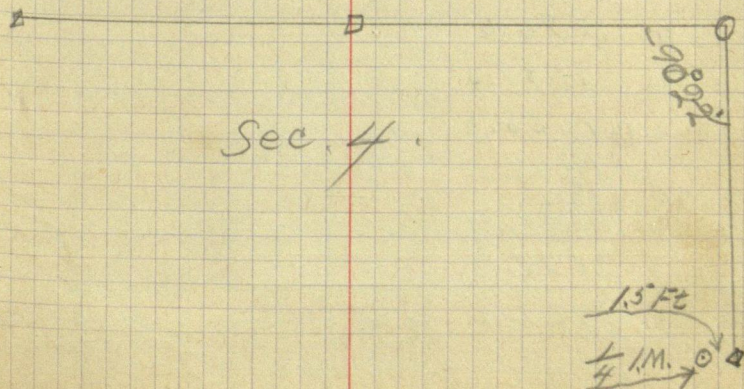
Sec 4 set by Curo sets W 1.5 ft

we quit for night

Wilson worked on S and W side of
 sec --- notes by Wilson follow

Ed B Horst.

Note. in all diagrams in this
 book the top is N unless shown
 otherwise Ed B Horst.



136 - 29 Sec. 4

Tuesday May 30 - 1916. Deed day
 Horst + same crew continue
 E Sec line S

I back sight on Non random line
 reverse telescope and sight to S.E.
 sec cor it bears W $105^{\circ}8'$
 we chain + cut line to cor

at 2700 ft S of $\frac{1}{4}$ cor, I.M. at S.E.
 cor to sec 4. I set transit over this
 cor sight W to flag at $\frac{1}{4}$ cor S side
 turn N-W. angle and sight N to I.M.
 at $\frac{1}{4}$ cor angle = $96^{\circ}01'$

we return N 1350 ft and set
 wood post for S to cor Then go N
 to $\frac{1}{4}$ cor and sight S to sec cor
 I turn S.W. angle $87^{\circ}18'$ and run $\frac{1}{4}$
 line W and chain

at 73.4 Hub

" 244.5 "

" 576.0 "

" 1139.0 "

" 1458.2 "

" 1795.0 "

" 1935.4 "

" 2575.3 "

" 2729.0 "

continued on page 7.
 E.B. Horst,

Time Sheet for Subdivision of Sec 4-136-29.

May 1916	27	28	29	30	31	June 1916					
J. W. Curo.	1										
E. B. Forst.	1	1	1	1	1		1	1	1	1	1
F. F. Wilson.	1	1	1	1	1		1	1	1	1	1 1/2
Thomas Cochran.	1 1/2										
Conas Meline.	1 1/2	1	1	1	1		1	1	1/2		
Albert Anderson.	1	1	1	1	1		1	1	1		
Philip Seidl.	1	1	1	1	1		1	1	1		

136-29 sec 4.
May-30-1916

at 2729.0 ft W I turn 90° S and
intersect $\frac{1}{4}$ line run E from W
side by Wilson distance = 364 ft
N.W. angle at P.I. = $85^{\circ} 22'$

P.I. hut at 2456 ft E on his line
distance across sec on true line =
= 5177 ft

quit for night

E.B. Horst,

Wednesday May 31. 1916

Horst and same crew.

I cause flags to be set at $\frac{1}{4}$ corners on N side and S side of see 4. I then set transit on true line bet corners N+S at about 1500 ft N we cut brush and chain from S side to N at 28.3 ft N cross road fence

" 300. " " line crosses N+S fence

" 496. " " enter field

" 593. " " cross E+W fence

" 1504.8 " " set Hub near old basement

" 1940. " " cross fence

" 2760. " " "

" 2848.2 " " intersect E+W $\frac{1}{4}$ random

" 2860.8 " " set Hub

" 4096.0 cross fence

pt 5234 ft N $\frac{1}{4}$ cor on N side

We go E on N sec line from $\frac{1}{4}$ cor to Sta 1297.2 and set E to on N side ^{in water} wood post
I turn $90^{\circ}22'$ S.W. angle and run to line
line S

at 100 ft S leave swamp

" 122.9 " " set hut and quit for
night

C.B. Horst.

136-29-See 4.

Thursday June 1-1916

Forest and same crew. continue
E to line S

- at 416.6 ft S set Hub
 " 700. " " N end of slow W of line
 " 1019. " " Cross fence
 " 1048.6 " " tack in 8 in oak stump
 " 1070. " " S end of big slow
 " 1173. " " used road runs N.E.S.W.
 " 1269. " " set Hub
 " 1888.2 " " " "
 " 2376.2 " " " P.I. Hub on E + W $\frac{1}{4}$

P.I. Hub = Sta 0.0 Turn $2^{\circ}40'$ W and
 Continue S

- " 40.0 E + W fence
 " 215.1 ft S set Hub
 " 1453.0 " " " "
 " 1555.0 " " cross fence enter field
 " 2350.7 " " set Hub
 " 2777.2 " " E to cor on S line
 sets E 13.2 ft. we quit for night

I take the 1.35 train at Pequot
 and go to Walker to see J.H. Carr
 about locating the center of sec 4
 he says, according to law

face to Walker 0.85' led at Carlson Hotel
 0.50

Friday June 2-1916

return to Pequot from Wabigoon fare \$0.85
my crew works with Wilson

my crew works with Wilson

Return at noon to Cochran's place
for dinner. Breakfast at Walker's. 2

for dinner. Breakfast at Walker's 0.25

P.M. I take same crew and run S $\frac{1}{2}$ line W to intersection on N $\frac{1}{4}$ S $\frac{1}{4}$ line

line W to intersection on $IV + S \frac{1}{4}$ line

we then go to W to on S side and run

 $W_{\frac{1}{4}} N$ to an intersection on $E + W_{\frac{1}{2}}$ line

Set up transit on E + W $\frac{1}{4}$ line at

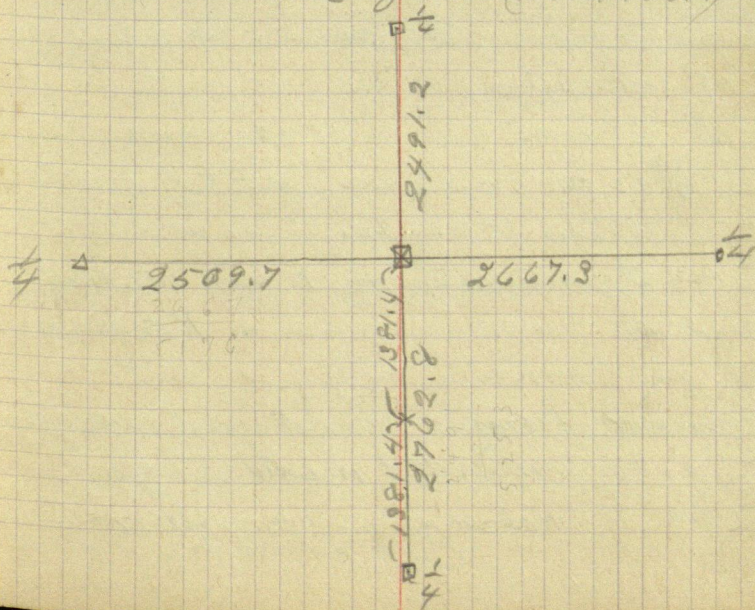
Hub 2729 ft W turn a 90° S and set Hub
on true line, also at 2575.3.

on true line, also at 25-75.3.

setting on trade 2729 on true line ✓

make an intersection on N+S $\frac{1}{4}$ line

and set Center of Sec. (Wood Post.)



Saturday, June 3-1916.

Horst, and same crew set $\frac{1}{2}$ cor on $N + S \frac{1}{2}$ line in $S \frac{1}{2}$ of sec at 1381.4 ft midway bet $E + W \frac{1}{2}$ line and S sec line. at intersection of $E + W \frac{1}{2}$ and $N \frac{1}{2}$ line we set post for cor in $N \frac{1}{2}$.

Wilson + crew stay on $N \frac{1}{2}$ E of $W \frac{1}{2}$ and I take crew and set a Hub on true $E + W \frac{1}{2}$ line at sta 1254.85 I set transit over this Hub and sight to $W \frac{1}{2}$ on N sec line at intersection of $W \frac{1}{2}$ and $N \frac{1}{2}$ we set post for cor which falls in slew at Wilson takes ^{his} transit and crew to a pit on true $S \frac{1}{2}$ line near $W \frac{1}{2}$ and I sight S from $W \frac{1}{2}$ cor on $E + W \frac{1}{2}$ line at intersection we set post for $\frac{1}{2}$ cor P.M. Wilson goes to Walker and I set $\frac{1}{2}$ cor on $E + W \frac{1}{2}$ line in $E \frac{1}{2}$ of sec at sta 1333.65 ft W on true $\frac{1}{2}$ line and $\frac{1}{2}$ cor at intersection of E and $S \frac{1}{2}$ lines also at " " " " $N \frac{1}{2}$ line

M. H. Cochran returns with Cement from Pequot and we set
Continued next page

all 2" of 3' from side

EB Horst.

Sat. June 3-1914. continued

drive to S.W. cor of Sec 4-136-29
load some sand and set following
cement corners all 9 inches in
diameter by 3 ft long marked with
a \times on the top and a pointed
pibble placed at true point
S to cor, $\frac{1}{4}$ cor, N to cor and N.W.
Sec cor all on W side of Sec 4
Twp 136-Rge 29.

M.H. Cochran driving team and
wagon. and Albert Anderson
and Philip Seidl assisting
all being witnesses to corners
set

E.B. Horst.

Sunday June 4 1916

E.B. Horst. Albert Anderson.

Philip Seidl and M.H. Cochran with team + wagon and necessary tools begin at $\frac{1}{4}$ cor and set cement corners at following places $W\frac{1}{4}$ on S side $\frac{1}{4}$ cor in center of S.W. Quarter, $W\frac{1}{4}$ on E + $W\frac{1}{4}$ line, $W\frac{1}{4}$ on N sec line, $N\frac{1}{4}$ on N + S $\frac{1}{4}$ line, $\frac{1}{4}$ at intersection of N and E $\frac{1}{4}$ lines, $N\frac{1}{4}$ on E Sec line and go to dinner

P.M. We set E $\frac{1}{4}$ cor on E + $W\frac{1}{4}$ line, $\frac{1}{4}$ in center of S.E. Quarter S $\frac{1}{4}$ on E sec line, E $\frac{1}{4}$ on S. Sec line, $\frac{1}{4}$ cor on S, sec line S $\frac{1}{4}$ on N + S $\frac{1}{4}$ line, and a cor at center of Section at center of N.W. quarter which is iron screw we drive an 8 ft pole and drive $2\frac{1}{2}$ " x 4 ft I.M. over pole, at E $\frac{1}{4}$ on N Sec line we drive a $1\frac{1}{4}$ in x 6 ft iron pipe with cap + marked E $\frac{1}{4}$ S. 4. T. 136. R 29. which concludes survey of sec 4.

E.B. Horst.

Monday June 5-1916.

as Mr. Swite up notes and make
out bills for work done on See
4-136-29

P.M. Mr. H. Cochran takes
me and outfit to Piquet.
I take 3-24 train to Walker
Railroad fare \$5.85-

I register at Chase Hotel and
work in Curoe office until
12 P.M.

E. B. Horst.

Recorded.

see 4-136-29

16

Saturday May 27 /16

J.W. Curo, F.F. Wilson & B. Horst
begin the subdivisions of Sec. 4 Twp 136
Rge. 29. We leave walker at
9.28 A.M. Train for Jenkins fare each
\$0.79. Wilson & Horst get dinner
at Jenkins Hotel each \$0.35. After
an early dinner we go to Sec. 4
136-29 in a rig engaged by Curo
from Jenkins Livery. Curo takes
us around section and shows
us the corners previously established
by him and we search for
the corners not previously established
by him.

Curo arranges with Mrs. M.H.
Cochran to board Wilson & Horst
while making this survey and
returns to Jenkins.

Today warm & clear F.F. Wilson

sec. 4-136-29

Sunday May 28/16

Fine & Clear

I take new Gurley Transit +
100 ft. Chicago steel tape and go
to $\frac{1}{4}$ cor. between sec. 4 + 9 and
establish true $\frac{1}{4}$ cor. from
notes supplied by John W. Curo
County Surveyor.

In Afternoon I take
Jones meline axe, chain & flag
and true line between

sec. cor. 3, 4, 9, 10 + $\frac{1}{4}$ cor.
and chain same the distance
being 2660.4 feet the
place hub and tack at 1330.2 as
the true $\frac{1}{4}$ cor.

We quit work at 530 Pm

J. H. Wilson

Sec. 4-136-29

18

Monday May 29th/16

Clear & warm

I take Transit & chain & found
meline as a/c & chain and go
to $\frac{1}{4}$ Corner between sec 4 & 9 and
set up picket. Then we go to
S.W. Cor of sec 4 and place post
as the true Sec. corner from
witness corners plainly marked.

Pine Stump N 32 E 184 =
Pine Stump S 35 E 97 =

I set picket and run straight
line E between S.W. cor of sec
and $\frac{1}{4}$ Cor. and chain same.

ooo $\frac{1}{4}$ Cor. between Sec. 4 & 9

1300 Hubs.

1307.05 $\frac{1}{16}$ Cor. W.P.

2614.1 S.W. Cor of Sec.

We place Hub & tack at 1307.05 as the
true $\frac{1}{16}$ Cor. (This line runs along
graded road.)

We then go to $\frac{1}{4}$ Cor between 4 & 5
and set Hub & tack from U.S. B.T.
as $\frac{1}{4}$ Corner it stands in centre of graded
road running N & S

19 Sec. 4-136-29

Monday May 29/116

U.S. B.T.S. called for

Tan. 6 S 85 E 8 $\frac{1}{4}$ = 5,28'

" 6 N 67 W 5 " = 3,30'

We find stump of Tan 6

S 85 E + place corner from
same. It stands in centre of road.

We then run straight line
between sec cor 4, 5, 8, 9

and $\frac{1}{4}$ cor + chain same

200 sec cor 4, 5, 8, 9

1300 Hub

2669.5 $\frac{1}{4}$ Cor between 4 & 5

And place ~~Hub~~ ^{mark} at 1334.75 N
as the true $\frac{1}{16}$ Cor.

I send machine to N.W. cor
sec 4 where he places a
flag and I place a flag at
 $\frac{1}{4}$ Cor between 4 & 5. Then I
take instrument and at a point
about 800 ft north of $\frac{1}{4}$ mark
on line between $\frac{1}{4}$ cor + NW cor
of sec. There is considerable
brush so we cut out line
at 6 PM we quit work

J F Wilson

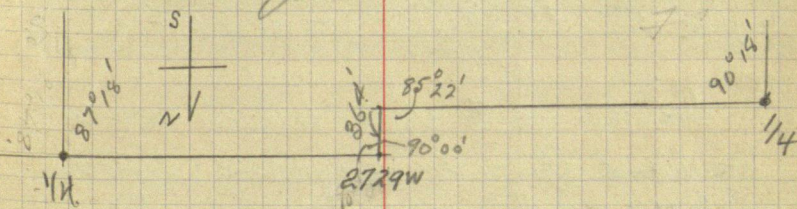
Sec. 4-136-29

Tuesday May 30²⁹/₁₆

J. Swilson + Jonas Melin go
to N.W. cor Sec. 4 and chain
distance 3 to $\frac{1}{4}$ cor. between 4+5.
St. chains 26 32.7 's the
place Hub + tack at 1285.8 S
as true $\frac{1}{16}$ cor.

We then go to $\frac{1}{4}$ cor between 4+5
where I setup transit + turn
angle $S 90^{\circ} 18' E$ and we cut a
random line East.

E.B. Horst & crew have cut
line W from $\frac{1}{4}$ cor between 3+4
and at sta. 2729.0 W. he turns
angle $90 S$ and we place Hub
at intersection with line Jan
running E distance from Horst's
line to my line at this angle $364'$
we quit work at 5³⁰ P.M.



J. Swilson

21 See 4. 1361.29

Wednesday May 31/16

J. F. Wilson Asst Eng & James Melvin
are chain go to $\frac{1}{4}$ cor between 4 & 5
& chain line E

000 $\frac{1}{4}$ Cor. between 4 & 5

550 leave Sunrac swamp

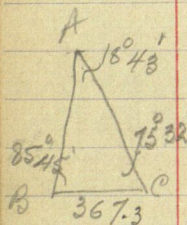
1349.8 Hub & tack

1500 enter slough

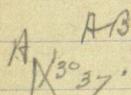
1797 leave slough

2456.1 Hub this point being

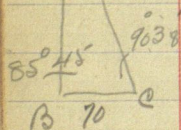
364' S 90° W from 2729 on E.B. Harts
line run from East.



In above Δ



$$AB = \frac{367.3 \times .96826}{.13209} = 1108.26$$



$$AB = \frac{70 \times .99992}{.0631} = 1109.2$$

We then go to $\frac{1}{16}$ Cor. between N.W. Cor of
Sec 4 and $\frac{1}{4}$ Cor on N Ry of sec. I turn
angle W $89^\circ 30'$ S and run line S
at 5:30 P.M. we quit work.

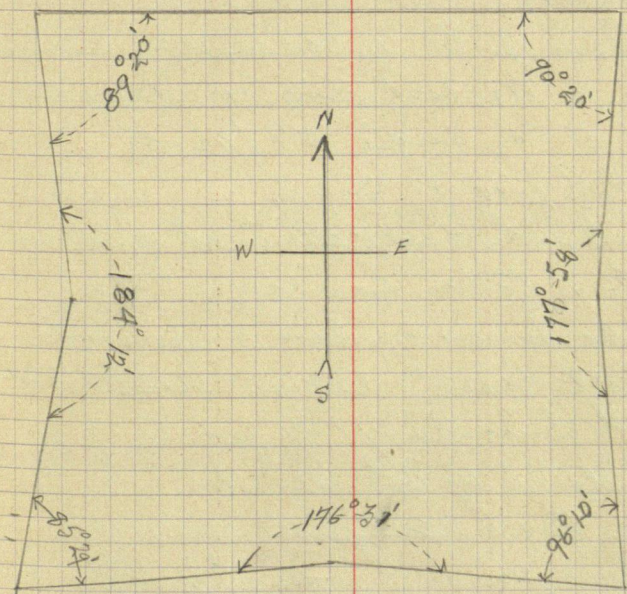
J. F. Wilson

Sec. 4-136-29

22

Thursday June 1/16

I take Gurley Transit & Jowles
inclin flag and read the angle
in this section as shown on sketch.



we then go to ^{sub 1/4} 1/16 cor. between SW cor 4
1/4 between 4 & 5 and start line E
at an angle S 94° 31' E

and at 5:30 P.M. we quit work

J. J. Wilson

E. B. Host goes to Walker to consult John
Curo.

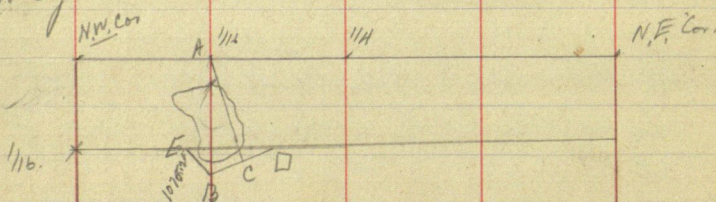
Sec. 4-136-29

Friday June 2

I take E.B. Horst's crew & with $\frac{1}{16}$ Jonas melin continue line started E from S $\frac{1}{16}$ corner W by to center of section.

Then go to $\frac{1}{16}$ corner W by between $\frac{1}{4}$ cor & NW cor of sec & start line E on angle N $87^{\circ}36'$ E we cut till noon and in afternoon E.B. Horst who has returned from walker takes his own crew & I take Jonas melin & finish cutting line we intersect East Boundary $\frac{4}{10}$ feet S of $\frac{1}{16}$ Cor. placed by E.B. Horst.

We then triangulate slough on line running S from $\frac{1}{16}$ corner W by.



we chain E from $\frac{1}{16}$ Cor. W by.

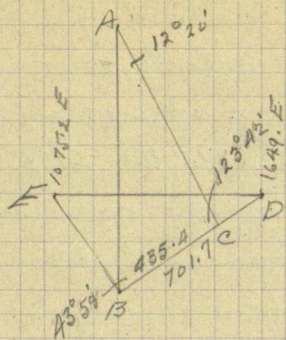
000 $\frac{1}{16}$ cor.

297 futs

344 cross used road running NE

1075.2 futs

1240 enters slough.



In $\triangle BAD$

$$AB = \frac{435.4 \times \sin 63.20}{\sin 21.36} = 1695.9$$

In $\triangle DEB$

$$ED = \frac{701.7 \times \sin 69.04}{\sin 67.27} = \frac{701.7 \times .9340}{.9236} = 709.63$$

at 530 km. we quit work.

J. Wilson

Sec. 4-136-29

Saturday June 3rd/16

I take transit and crew & set
upon true $N\frac{1}{2}$ line E.B. Horst & crew
Set up transit on true $\frac{1}{4}$ line N+S
we place wooden post at intersection
of these two lines as true $\frac{1}{6}$ cor.

Horst & crew set up transit on
true $W\frac{1}{2}$ line N+S & we place
wooden post at the intersection as
True $\frac{1}{6}$ Cor. in NW $\frac{1}{4}$ of sec.

I take crew & transit & set up
on true $S\frac{1}{2}$ line E+W in SW $\frac{1}{4}$ of sec.

Horst sets up transit on true $\frac{1}{2}$
line N+S in SW $\frac{1}{4}$ of sec.

we place wooden post as true
 $\frac{1}{6}$ Cor. in SW $\frac{1}{4}$ of sec.

After dinner Lt Cochran takes
me and outfit to Regent. I order
5 bags cement from Baker Lumber Co.
and 1-6 ft Galv. pipe & cap from Regent Hardware
Co. to be used for corners in the sec.

I take 3.24 P.M. train to walk
fare 85¢ and work in Curtis Office on
boat till 9 P.M.

J. J. Wilson

Sec. 4-136-29

26

Sunday June 4/16

I work on Plat of Sec. 4-136-29.
in Curo's office

F. J. Carlson

27

Sec. 4-136, 29. Monday June 5/16

I work on Plat all day and
J. W. Curo E. B. Nord & J. E. Wilson
work in Curo's office till 12 P.M.
Calculating acreage of each tract
in Sec. 4-136, 29.

J. E. Wilson

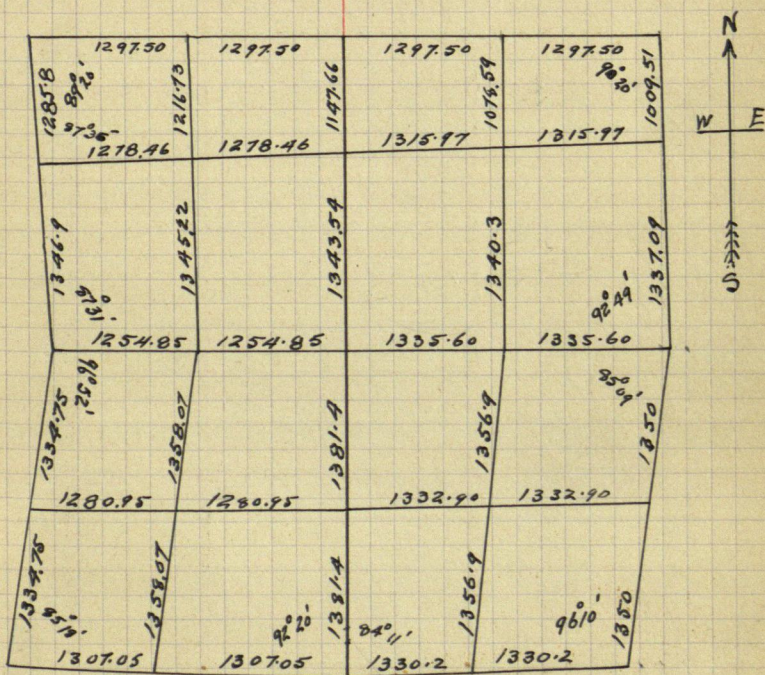
Sec. 4-136-29.

28

Tuesday June 6/16

I work on Plat Sec. 4-136-29
and finish same at noon.

J. H. Wilson



31.

Twp Road 138-31+32

Wed. June 6 - 1917

385

E. B. Horst working for
Bull Moose and McKinley
Twp on a Twp road
to begin at S.W. cor of sec
6-138-31. and run S.

two miles on Range line.

I leave Walker on 9-28

train and go to ~~the~~ Hackensack.

purchase
a Ford. and drive to
Chas. Hanks place in
sec 6-138-31. (Bull Moose)
where I will board.

I call Mc. Kinley Twp.
Chairman but unable to
get him.

I drive to John Howers
place (Bull Moose Chair-
-man) and get instructions

E. B. Horst.

Recorded
Book C

TWP Road.

32.

385

June 7-1917. Thursday.

E.B. Horst transit & chain

John McFarling chain

Charles Hanks axe & flag

Ben Bagley, axe.

Sta 0.00 = cement monument
on Range line being in center
of E.T.W. road and road run-
ning N and cor to sec
6 & 7 T138.30^{90°} and sec 14 & 12
T138 Rge 31

run S at 90° Var

1296.3 S set Hub.

2640.0 " " stake at this pt.

U.S. Notes call for post and
Aspen 10 S 38 W 9.

" " 10 N 68 E 10.

all are gone continue S

3110.8 set Hub.

3858.2 " "

5281.6 " " at this point

U.S. Notes call for post and

W. pine 18 N 20 W - 10.

Pine 18 S 45 E - 12.70

" 18 S 58 W - 60.

W. Birch 14 N 60 E 30.

E.B. Horst

33.

TWP Road 138-31+32
385

June 7-1917

we find an old post but
no B. Tie to check with same
Continue our random line S
at 5410. S cross old road

6479.0 S set Hub

7259.5 S set tack in j. Pine stump

E.B. Moret.

Twp Road 138.31 + 32

June 8 1917 Friday

34.

Horst + same crew continue
S between secs 13 + 18.

7920.0 S U.S. Notes call for Post &
Spruce 12 S 50 W 25.

W. Birch 10 N 50 E 35.

Both trees gone. Continue S

8127.3 S set Hub

8800.0 " cross road winding

8848.5 " set Hub

9527.0 " set Hub

10560.0 " set " U.S. Notes

Call for post and following B.T. &

W. Birch 6 for corner.

" " 8 N 52 E 10 13.

" " 8 N 30 W 25

" " 6 S 80 W 20 2.

Being cor to secs 13. 18. 19. 24.

Twp 138, Rge 30. 31?

there are many

stumps but all are burned to
a point and I am unable

to find any that check with
U.S. Notes. There are 2 cruiser
stakes set at 10560. (No good)

35

TWP Road 138-31 + 32

June. 8. 1919. 385

We continue Random line S

12119.2 S set Hub

13200.0 " " stake and look

for 22 S. B.T. S

Aspen 4 E 9

Red Oak 28 N 80 W 29.

all gone. We quit for night.

E. B. Horst.

Saturday June 9-1917.

Horst and same crew
Continue S on Range line
between secs 19-24

14549.5 S set Hub

No sign of B.T.s

15853.0 " enter small lake (Bay)

15964.0 " leave bay of small lake

16321.5 " set Hub to triangulate
another bay of lake

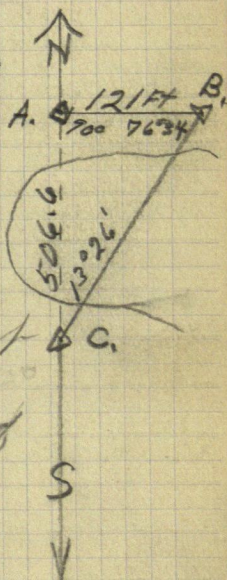
16828.1 Hub C. on S. side
of lake. Continue S.

18069.5 set Hub N of
swamp. also set a
Hub S of swamp.

we walk around swamp to Hub B 300 ft S. of
swamp and 220 ft N. of
a lake & cause a
Hub C to be set on
S. side of lake.

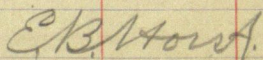
From Hub B I turn 90° L
and run E 244 ft = Baseline,
(see diagram next page.)

E. B. Horst.



37

385



1385

138-31-32

38

June 9-1917

and sight to Hub A turn \angle
to Hub. B. $\angle = 68^{\circ}22'$
Sight to Hub C and turn \angle
to Hub B $\angle = 82^{\circ}29'$ (tripled)
distance from Hub. A. to Hub. B.
 $= 615.2$ Ft. Hub B to C $= 1849.2$ Ft.
Hub C. S side of lake = Station
20533.9 Ft. S. Continue S
at sta 21119.2 Ft. S. an 8X8 cement
monument marking the cor
to secs 30+31 T138, R31, and secs
25+36 T138 R32. established by
John W. Euro. from U.S. B.T.s.
(B.T.s still standing) sets E 30.8
Feet.

we take outfit 1 mil. N. and
quit for night. E.B. Horst.

138-31-32.

Monday June 11-1917.

1385

Horst and same crew
correcting back on Range
line between Twp 138, R 31-32

Sec Cor to secs. 19-24-25-30 at
sta. 15839.4 S goes E 23.1 Ft

I set a 2x48 I.M. with New B.T.s

N. Pine 12 N 15° E 77.0 Ft.

J. Pine 8 N 39° W 85.4 Ft.

J. Pine 8 S 61° 30' E 120.2 Ft

1/4 cor between secs 19-24 at
sta 13199.5 goes E 19.25 Ft. New B.T.s.

J. Pine 9 N 54° 30' E 31.5 ft set I.M.

Popple 4 N 49° W 41.0 ft. set I.M.

Sec. Corner to secs 13-18-19-24

T. 138 R 31+32 at sta 10559.6 S.

goes E 15.4 ft we set I.M.

with following New B.T.s

J. Pine 6 N 59° 15' E 35.5 Ft.

" " 5 N 49° 30' W 42.0 Ft.

" " 6 S 76° 30' W 89.8 Ft.

1/4 cor between secs 13-18

at sta 7919.7 goes E 11.55 ft

we take New B.T.s

E.B. Horst.

1385

W. Pine 12 N $47^{\circ}30'$ W 74.8 Ft.J. Pine stump 10 S $87^{\circ}30'$ E 20.1 Ft.
and set I.M.Sec. Cor to sees 7-12-13-18
at sta 5279.8 ft S goes E 7.7 ft
we set I.M. with New B.T.s
W. Pine stp. 20 N $36^{\circ}20'$ W 67.8 Ft.J. Pine 7 S. $29^{\circ}50'$ W 100.5 Ft.N.P. stump 18, S. $56^{\circ}40'$ E 35.0 Ft. $\frac{1}{4}$ cor between sees. 7+12 at sta
2639.9 S. goes E 3.85 Ft. set I.M.

No trees or stumps near.

Sec. cor. to sees 1-6-7-12 was
previously established and
marked by an 8x8 cement Mon.
I set transit over this cor. and
sight E to W $\frac{1}{16}$ cor bet sees 6
& 7 turn S.E. \angle to true line

$$\angle = 90^{\circ}46'$$

True line S.W. \angle to S.R.H. running
 $W = 91^{\circ}27'$ Note all Iron Monuments set
in this survey are 2"x48"
Boiler flues.

E.B. Horst.

1385

Recorded
Book C.

43
Ansel 137-32

Tuesday June 12-1917
1386

As per order of the
Ansel Trap Board I
drive to Backus and
get 24 I.M.s (which I
had sent by freight from
Walker Freight \$0.25)
and drive to Burt Burton's
place in sec 20-137-32
P.M.

E.B. Horst, Burt Burton,
L.R. Farnum and Leonard
Anderson take outfit and
drive to NE cor of sec 4
T. 137, R. 32

We walk W. $\frac{1}{2}$ mile where
U.S. Notes call for post and

all are gone and we walk
to N.W. cor of sec 4, where
U.S. Notes call for post and

386

All are gone and I find that F.A. Donner has made a survey on this line so I decide to send to Walker for his field notes.

We return to Burt Burton's
E.B. Horst.

45

Recorded.

137-32.

Wed. June 13-1917.

1386

Horst, transit.

L. R. Farnum. Chain.

Burt Burton chain.

Elmer Olson axe + flag.

Leonard Anderson axe.

Drive to cor of secs. 29-30.

31-32 T. 137. R. 32 in center

of N + S road and in line

with road running W

previously established and

marked by a wood post.

We pull up post and

set in its place a 2" x 48"

I.M.

With transit over this cor

we run S between secs 31 + 32

at 9° Variation

901.4 S set Hub

2102.8 S " "

2598.5 " " " we look for

B.T.s to $\frac{1}{4}$ cor.Refer 16 S 82° E 9.B. ask. 6 N 70° W 17.

all gone continue S

E. B. Horst.

137-32. 1886 46

June 13-1917

3700.8 - S - set Hub. enter swamp

5280.0 " " " in open
swamp and look for

Tam. $5^{\circ} N 56^{\circ} E 203$.

Tam. $5^{\circ} N 34\frac{1}{2}^{\circ} W 337$.

Mr Burton saw these trees 10
years ago but they are gone
now and he is unable to
identify the cor or stumps

We walk E $\frac{1}{2}$ mile to $\frac{1}{4}$ cor
previously established from

U.S. B.T.s pull up wood post
and set in its place a $2 \times 48''$

1.M. and run W at $8^{\circ} 30' Var$.

at about 750 W enter Tam swamp

2494.6 W set Hub on N + S

random line bet sec 31 + 32

N.W. $\angle = 89^{\circ} 32'$

3900.0 leave swamp

4044.5 W set Hub.

4430.0 " enter Tam swamp.

5280.0 W set Hub. and look

for U.S. B.T.s to $\frac{1}{4}$ cor on

S side of sec 31-137-32

E B Horst.

47

137 - 32, 386

Thursday June 14 - 1917.

Horst + same crew.

look several hrs for B.T.s

Tam. 6 N 47° E - 14

Tam. 6 N 28° W - 27.

all are gone continue W

5674.7 W point on 8 in Tam stump

6100.0 " leave swamp

6389.8 " set Hub.

6956.4 " " "

7183.9 " " "

7744.6 " " " a wood post

and a short piece of pipe
set N 40° 40' W 76.40 ft.We look for B.T.s to S.W. cor
of sec 31 also S.W. cor of Twp
137 R. 32. on 9th Standard
Parallel being

W. Oak 24 N 46° 30' W 161

Elm 12 N 84° 30' E 32.

We find an Oak stump burnt
to a point but nothing to
check with it no Elm near
point called for

(wood cor set by imagination)

E.B. Horst.

Friday June 15-1917

Horst and same crew except
A. S. Anderson continue W
into Wadena County on random
Parallel

9474.6 W set / Hub.

12999.3 W set / Hub. I find a
jack pine Bearing tree at S.W.
Cor of sec 36 T137 Rge 33

but have no field notes

June Jensen identifies this
tree, so does Nels Jensen

I walk N one mile to Herbert
Howard's place and telephone
to Reg of Deeds at Wadena
for above field notes (Phone 40)
get the following

Pine 9 N 30° 30' E 29.

" 12 N 69° W 33. we find
the N.E. tree faintly marked
also the stump of N.W. B.T.
from these I set a 3" x 3" x 24"
Pine post in cent of road
with following bearings

E. B. Horst.

49

Recorded.

1386

137-32-33

June 15-1917.

Var 8°30' } S of Pine 8 N 56°50' W 55.3 Ft.
 Needle. } S of Pine 5 N 43°17' E 41.6 Ft.

at 8°30' Var 33 ft N of cor
 & bury a stone 8 in diam.
 with pine knots & chips
 as an additional bearing.

Returning to Hub 12999.3

Cor sets N 41°07' W 93.9 ft.

at sta 13061.0 Ft. W. SW. corner

of sec 36-T137.R.33 sets N
 70.7 ft. {A.L. Anderson}

Correcting back. {helps in P.M.}

at sta 7836.6 ft W and 42.4

ft N of random line I set a
 2" x 48" I.M. for SW. cor T137.R.32

with following bearings

W. Oak 6 N 60°30' E 66.2 ft.

B. Gilead. N 42°43' W 27.8 ft.

1/4 Cor. S. side sec 31. at sta
 5224.4 W goes N 28.3 ft

I set a 2" x 48" I.M. New B.T.S.

Tam 8 N 85° E 22.8 Ft.

Spruce 5 N 78° W 21.0 Ft.

E.B. Harst.

1386

137-32.

50

Saturday June 16-1917

E.B. Horst and same crew
 setting Iron Monuments
 all I.M.s being 2"X48" Boiler flues
 and set at following corners
 established by E.B. Horst in 1916.
 at S.W. cor of sec 33-137-32. I.M.
 at cor to 15-16-21-22-137-32 set I.M.
 " cor to 28-29-32-33 set 2 1/2"X48" I.M.
 " 1/4 cor between secs 33+34-I.M.
 " cor to secs 21-22-27-28 set I.M.

On random Twp line S. side of
 secs 31+32 T137-R32 at sta 2612.2
 W & Chain N 14.15 Ft and set
 I.M. at cor to secs 31+32 with
 following New Bearings
 Tam 6 N 55°15'E 198.0 Ft.

" 8 N 9°44'W 255.9 Ft.

Set transit on Hub 5280. S on
 random between secs 31+32
 I.M. at cor sets N 63°13'W 130.3 Ft.
 for 1/4 cor bet secs 31+32 at sta
 2410.65 S & Chain W 58.15 set I.M.
 New B.T.s W. Oak. 9 N 64°30'W 110.2 Ft
 W. Oak. 6 S 89°E 72.3 Ft.

E.B. Horst.

51

137-32. 1386

Monday June 18. 1917.

E.B. Horst & same crew and
Julius Rand as a man
begin at Cement Monument
at N.E. cor of sec 4-137-32
Run W at 9° Variation

2247.5 W set Hub

3806.5 " " "

5068.8 " " "

5300.0 " enter swamp

6157.6 " set Hub

7180.0 " leave swamp.

7210.4 " set Hub

8196.7 " " "

9422.7 " " "

10439.5 " " "

10647.4 " I.M. $\frac{1}{2}$ " X 48" (set by F.A.

Donner field Notes Book 89)

at cor to secs 5+6-137-32

sets N. 40.8 Ft

Correcting back

at sta 5323.7 W & chain

N 20.4 Ft and set a 2" X 48"

I.M. for cor to sec 4+5-137-32

and sec 32-33 T 138-32

I set a 6 in Oak post 6 ft long
S 45° E 46.7 ft

Oak post 6" x 6' S 45° W 46.7 ft.
at sta 2661.85 W I chain N
10.2 ft N and set a 2" x 48" I.M.
for $\frac{1}{4}$ cor on N side of sec 4,
with following bearings

J. Pine. 10 N 42° E 48.8 Ft

N. Pine 10 S 71° W 85.2 Ft.

Hub 2247.5 goes N 8.6 ft to true ^{line}
C.B. Horst.

53

V 37 32
386

Tuesday June 19-1917.
E.B. Horst. & same crew except
Julius Rand.

set 2" x 48" Iron Monuments
on survey made by E.B. Horst.
in 1916 (book 65)

at following sec & $\frac{1}{4}$ corner
Secs 1-2-11-12 set I.M.

$\frac{1}{4}$ cor between secs 1 & 12

S.E. cor of sec 12 - 137-32

Secs 11-12-13-14 set I.M.

$\frac{1}{4}$ cor between secs 11-14

Cor to sec 10-11-14-15 ~~to~~ which
falls in center of a Judicial
Ditch. I drive I.M. in bottom
of ditch and set a Whit post
N 13 Ft and post S 10 Ft.
This concludes survey for
Ansel Twp.

Board meets in evening
and I receive my pay.

E.B. Horst.

386

137-32

54

Wed. June 20 - 1917
I return to Walker
from Ansel Twp.

CB Horst
Recorded.

$$\begin{array}{r} 5280 \\ 2 \\ \hline 15840 \end{array}$$

$$\begin{array}{r} 34 \quad 1.1 \\ 2/4 \text{ of } 90.8 \\ \hline 23.1 \end{array}$$